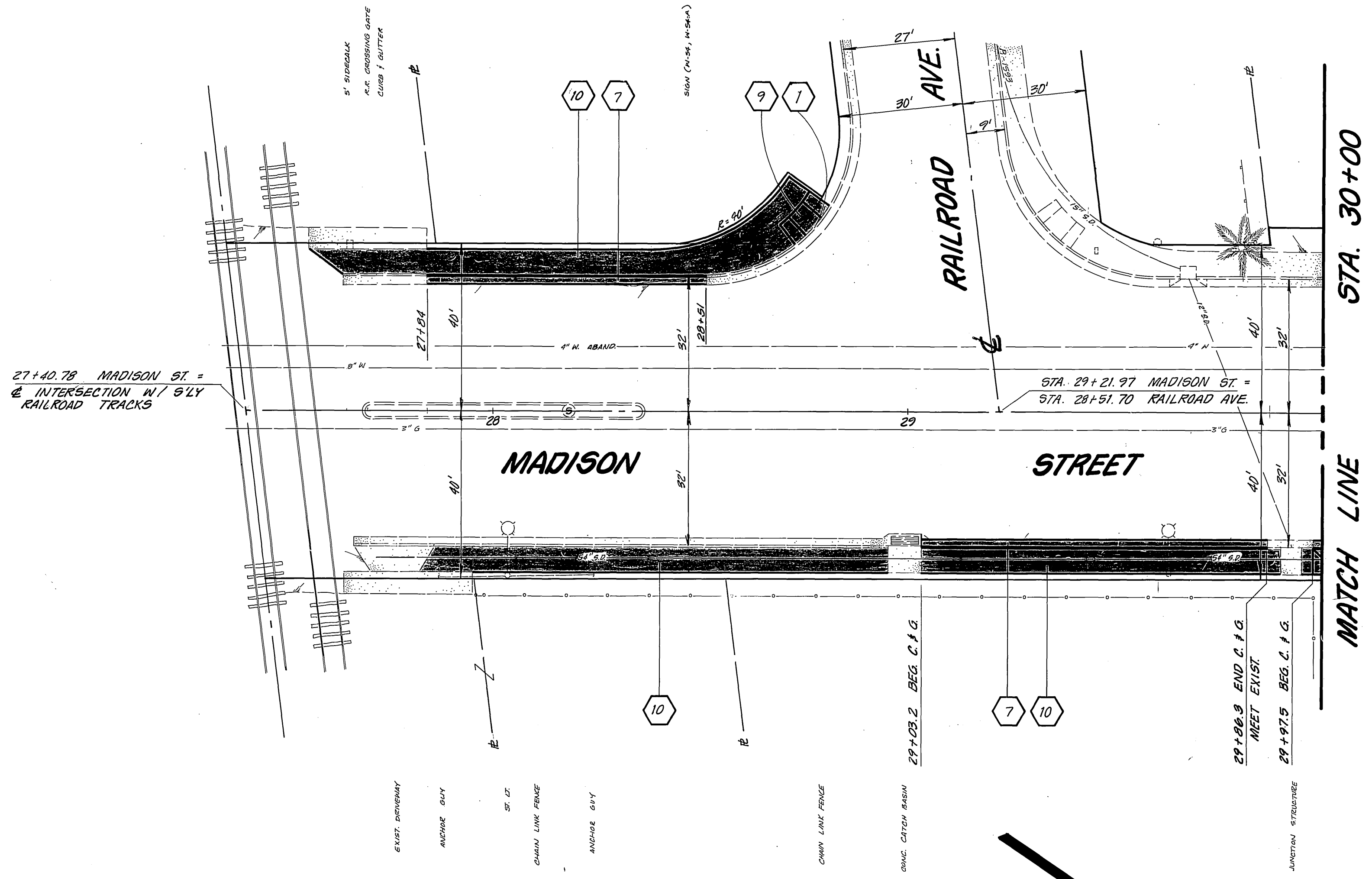




**BENCH MARK: 601-17-68**  
 ON THE AT & SF RAILWAY, 91.5' S/W OF THE C. OF MADISON ST. 22.0' S/E OF THE B/E RAIL OF THE MAIN LINE AND 19.0' N/W OF THE N/W RAIL OF THE SPUR LINE. BRONZE DISK SET IN CONC. 2.0' BELOW THE MAIN TRACK.  
**ELEV. 861.485**

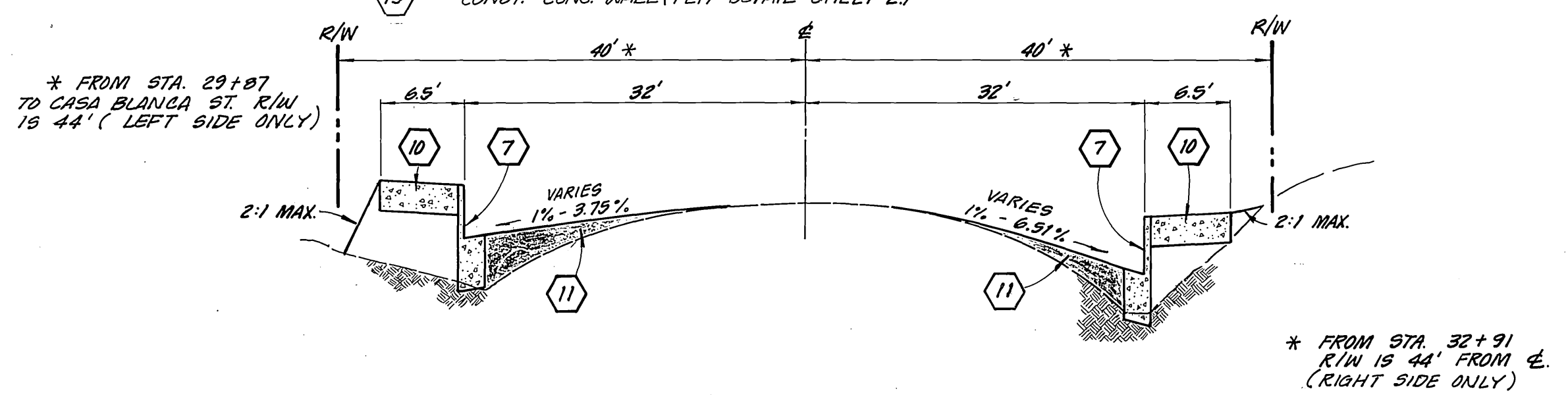


**GENERAL NOTES:**

- CONSTRUCTION SHALL BE IN ACCORDANCE WITH THE CITY OF RIVERSIDE STANDARD DRAWINGS AND STANDARD SPECS FOR PUBLIC WORK CONSTRUCTION 1982 EDITION.
- TRIM EDGE OF EXIST. PAVEMENT TO A SMOOTH, STRAIGHT LINE.

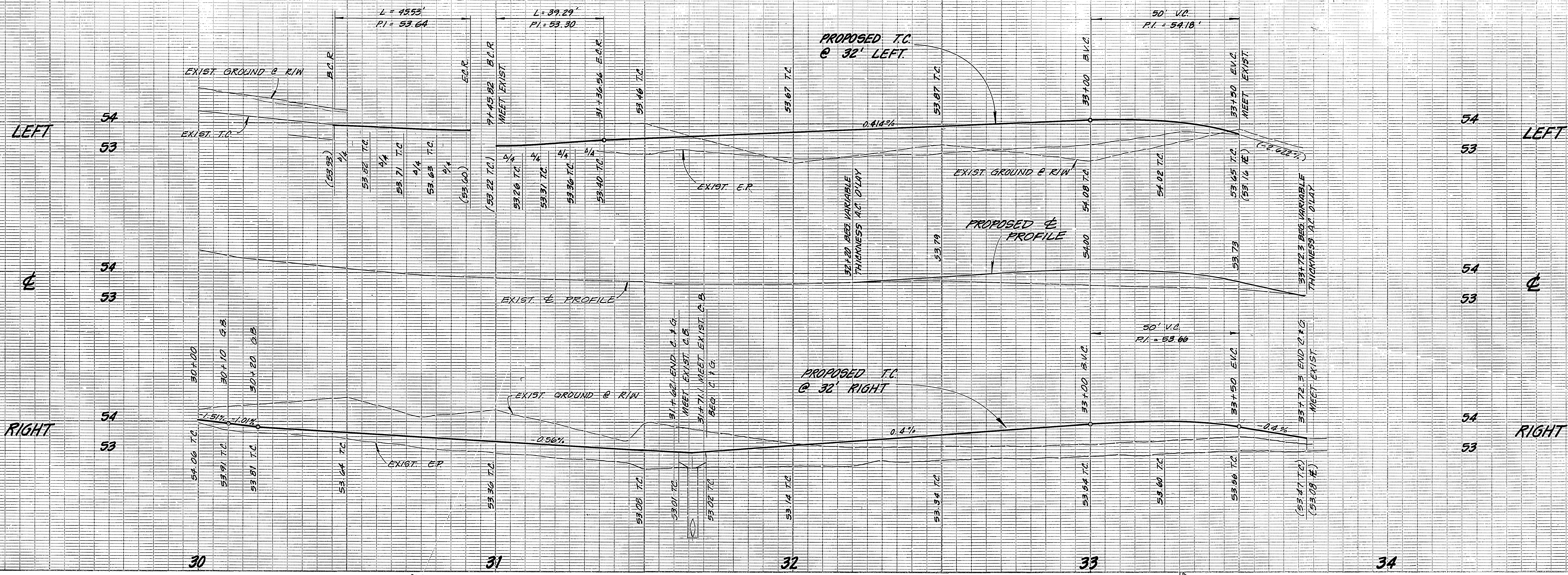
**CONSTRUCTION NOTES:**

- CONSTRUCT RAMP CENTERED ON EXIST. CURB DEPRESSION.
- ADJUST TO GRADE.
- RELOCATE (BY CITY WATER DIVISION).
- RELOCATE CHAIN LINK FENCE TO CLEAR PROPOSED SIDEWALK.
- CONSTRUCT MATCH UP CONC. DRIVEWAY.
- GRADE DRIVEWAY TO MATCH UP TO SIDEWALK.
- CONSTRUCT CURB & GUTTER PER STANDARD DRAWING NO. 200, 6" C.F.
- CONSTRUCT DRIVEWAY APPROACH PER STD. DWG. NO. 302, A & B AS NOTED.
- CONSTRUCT WHEELCHAIR RAMP PER STD. DWG. NO. 304.
- CONSTRUCT CONC. SIDEWALK PER STD. DWG. NO. 325.
- CONSTRUCT VARIABLE THICKNESS A.C. OVERLAY.
- PLACE 3-3" x 5" STEEL POSTS SET 2' IN CONC. AND FILL WITH CONC. AT OWNERS DIRECTION.
- CONST. CONC. WALL (PER DETAIL SHEET 2).



**TYPICAL SECTION**  
NO SCALE

<b>CITY OF RIVERSIDE</b> <b>PUBLIC WORKS DEPARTMENT</b>		<b>MADISON STREET IMPROVEMENTS</b> AT & SF RAILROAD TRACKS TO INDIANA AVENUE AN H.C.D. PROJECT		INDEX # <b>R-2482</b>
APPROVED BY: <i>[Signature]</i> DATE: 9/1/83 PRINCIPAL ENGINEER: <i>[Signature]</i> PARK DEPT. ENT. TRAFFIC DIVISION CHIEF P.W. ENGINEER	APPROVED BY: <i>[Signature]</i> DATE: 9/1/83 PUBLIC WORKS DIRECTOR	* As built 4-15-83 TE	ACCOUNT NO. 15-550-532	SHEET <b>1</b> OF <b>2</b>
DESIGNED BY: <i>[Signature]</i> DRAWN BY: <i>[Signature]</i> CHECKED BY: <i>[Signature]</i>		DATE: <b>SEPTEMBER 1, 1983</b>	HORIZ. SCALE: 1" = 20' VERT. SCALE: 1" = 4'	REF: OR L.L. # 11-9



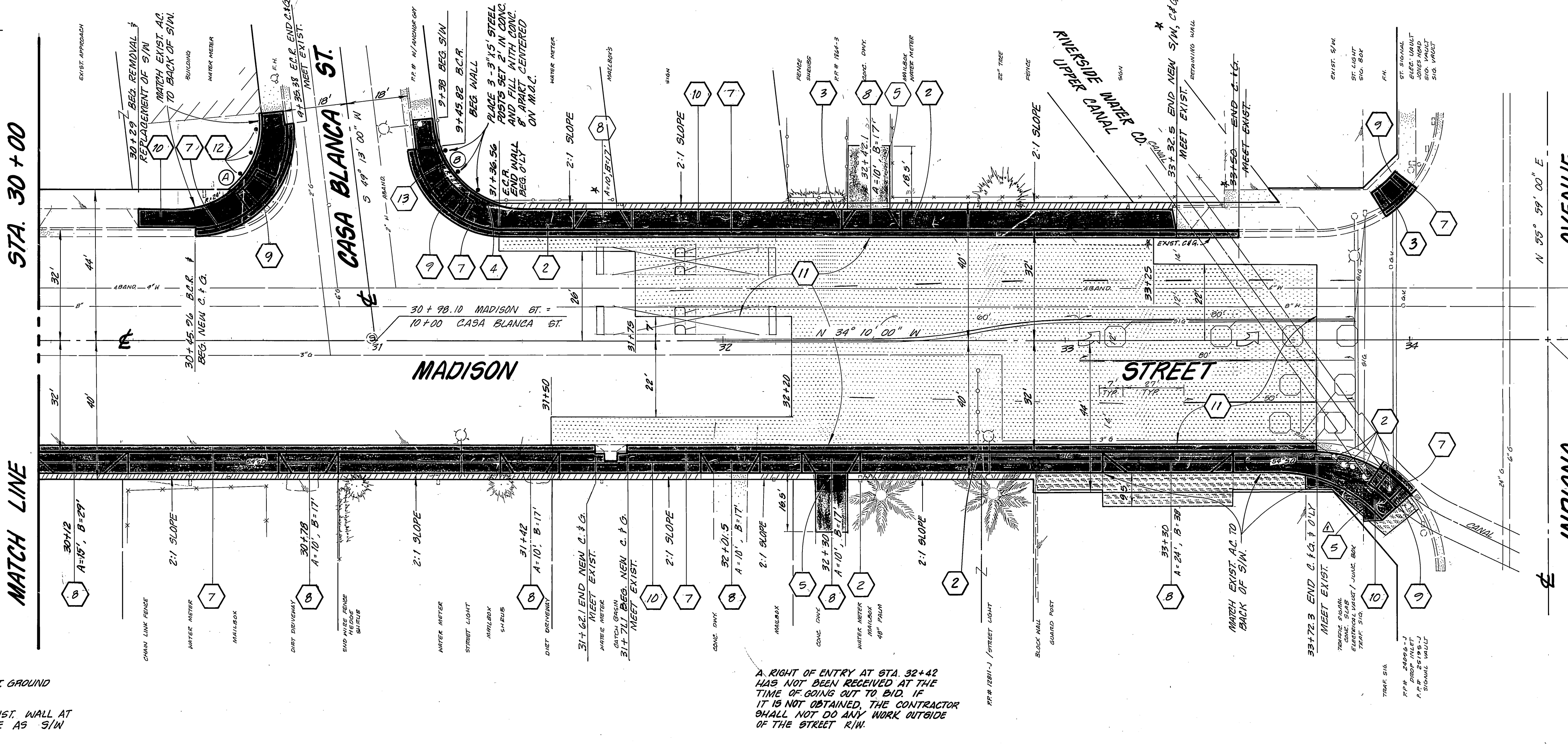
**BENCH MARK 601-17-68**  
 ON THE AT & SF RAILWAY 71.5' S/W OF THE E.C. OF MADISON ST. 28.0' S/E OF THE S/W CORNER OF THE MAIN LINE AND 16.0' N/W OF THE N/W CORNER OF THE SPUR LINE. BRONZE DISK SET IN CONC. 2.0' BELOW THE MAIN TRACK. ELEV. 861.455

**CURB RETURN DATA**

(A) R = 27'  
 Δ = 76° 37' 00"  
 L = 49.53'  
 T = 30.31'

(B) R = 27'  
 Δ = 83° 23' 00"  
 L = 39.29'  
 T = 24.06'

CURB, GUTTER AND SIDEWALK REMOVAL AND REPLACEMENT NOT SHOWN ON PLANS:  
 CASA BLANCA ST., NEXT TO CHAVEZ AUTO PARTS, APPROXIMATELY 40' W/W OF E.C.R.  
 41 LF CURB AND GUTTER  
 170 SF SIDEWALK

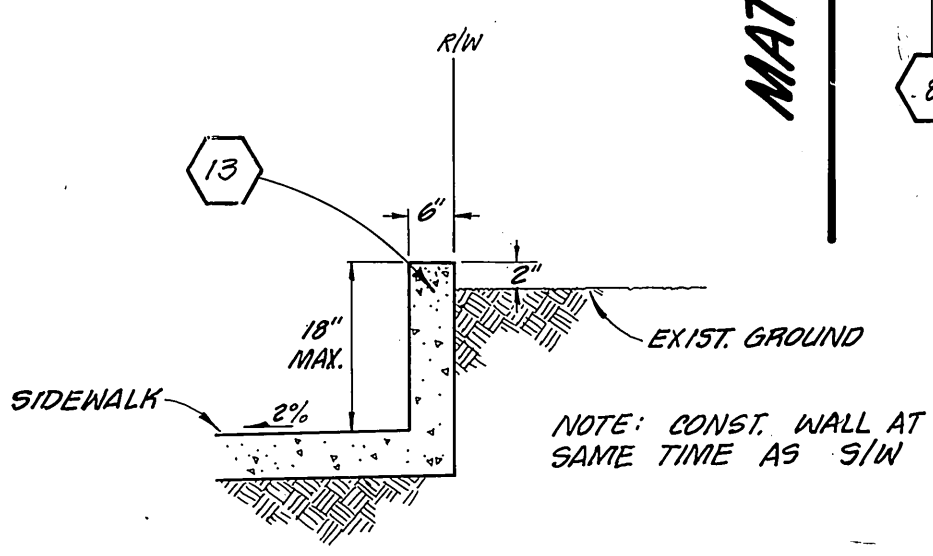


NOTE: ALL TRAFFIC DETECTOR LOOPS SHALL BE REPLACED IN THEIR ORIGINAL LOCATION.

STRIPING AND PAVEMENT MARKING SHALL CONFORM TO THE EXIST. BOTH R.R. CROSSING MARKINGS SHALL COMPLETELY REPAINTED.

**SHADING LEGEND**

P.C.C. CONSTRUCTION (INCLUDES CURB, GUTTER, S/W AND DRIVEWAYS)  
 ASPHALT OVERLAY  
 MATCH UP AC PAVING BEHIND S/W.



A RIGHT OF ENTRY AT STA. 32+42 HAS NOT BEEN RECEIVED AT THE TIME OF GOING OUT TO BID. IF IT IS NOT OBTAINED, THE CONTRACTOR SHALL NOT DO ANY WORK OUTSIDE OF THE STREET R/W.

<b>CITY OF RIVERSIDE</b> PUBLIC WORKS DEPARTMENT				<b>MADISON STREET IMPROVEMENTS</b> AT & SF RAILROAD TRACKS TO INDIANA AVE. AN H.C.D. PROJECT	
APPROVED BY: [Signature] DATE: 11/23/83	APPR. BY: [Signature] DATE: 11/23/83	DESIGNED BY: [Signature] DRAWN BY: [Signature] CHECKED BY: [Signature]	DATE: FEBRUARY 1, 1983	INDEX UP ACCOUNT NO. 19-350-532 <b>R-2487</b>	SHEET 2 OF 2 REF. OR L.L.# 11-9