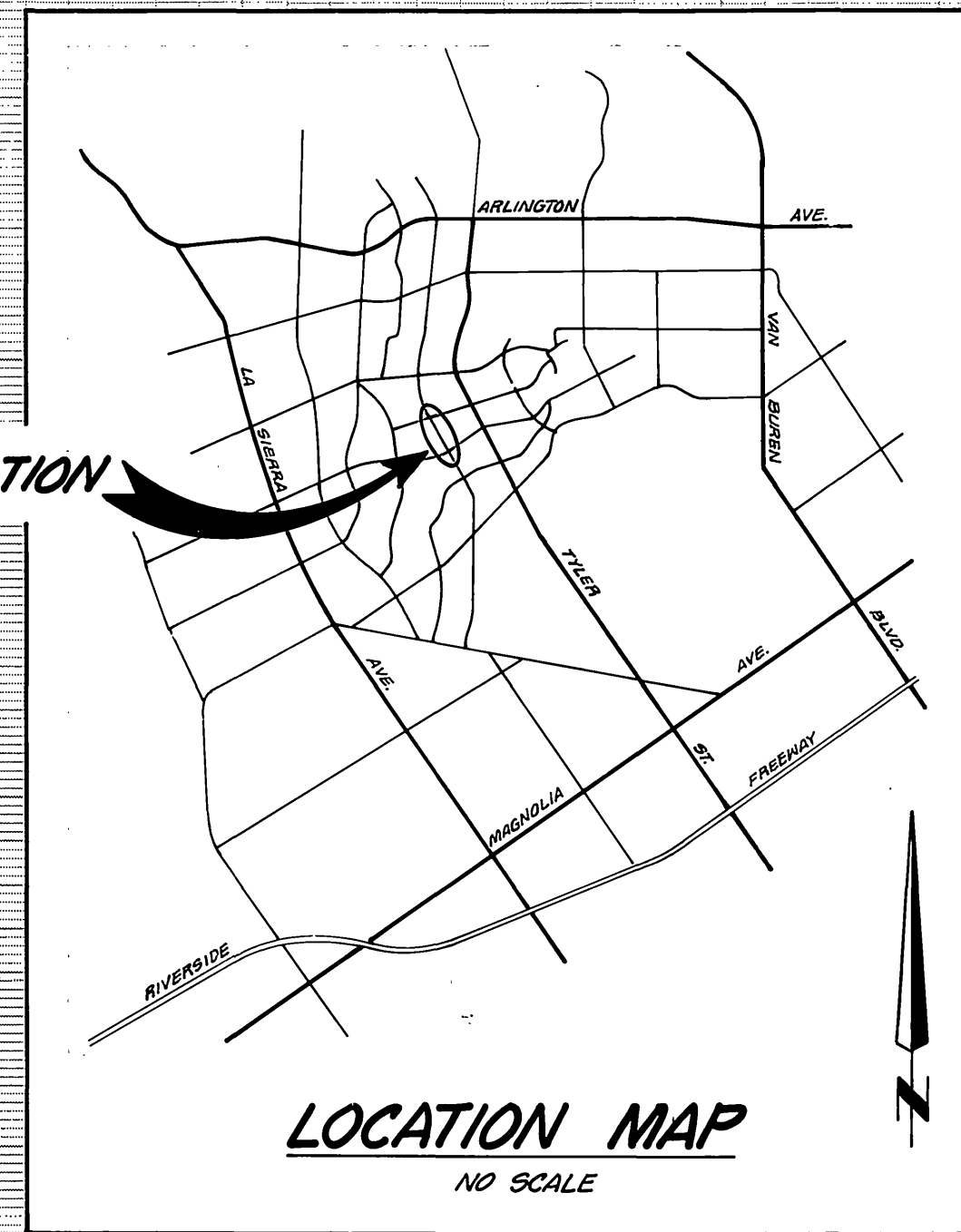
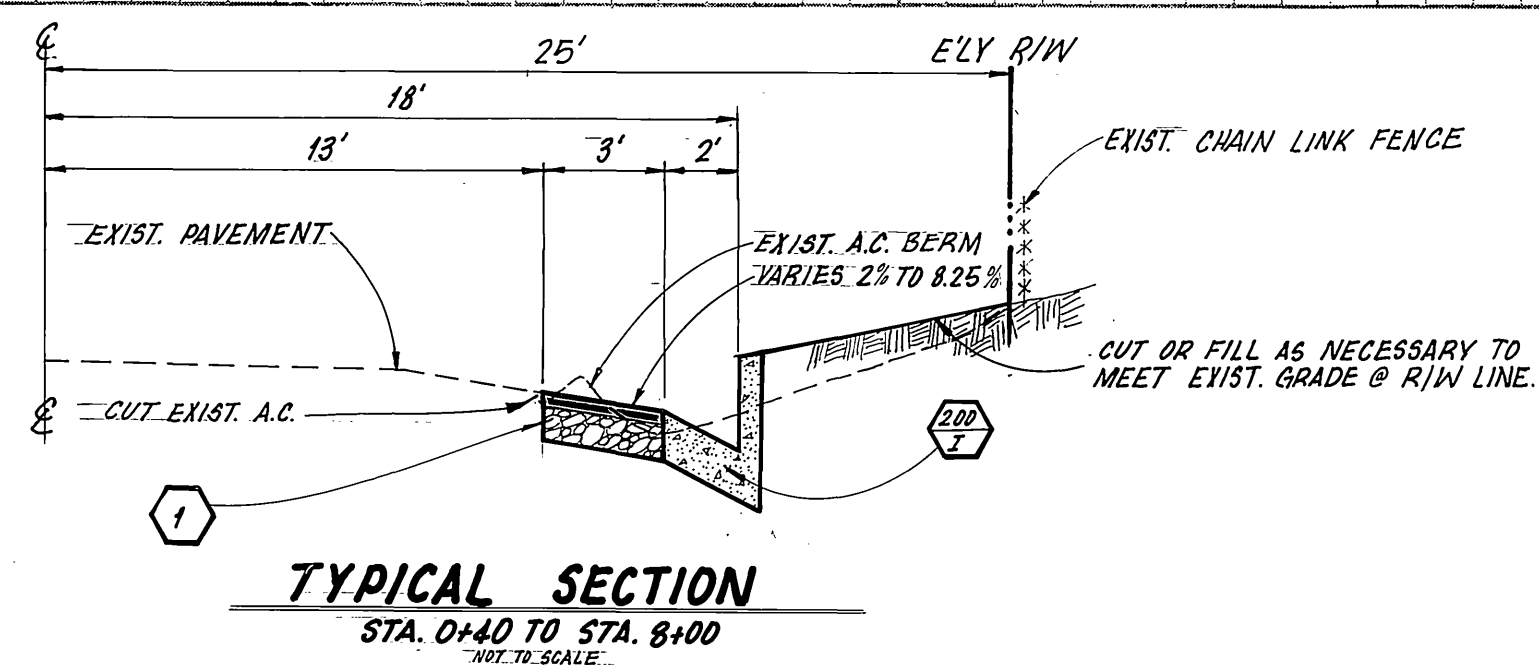
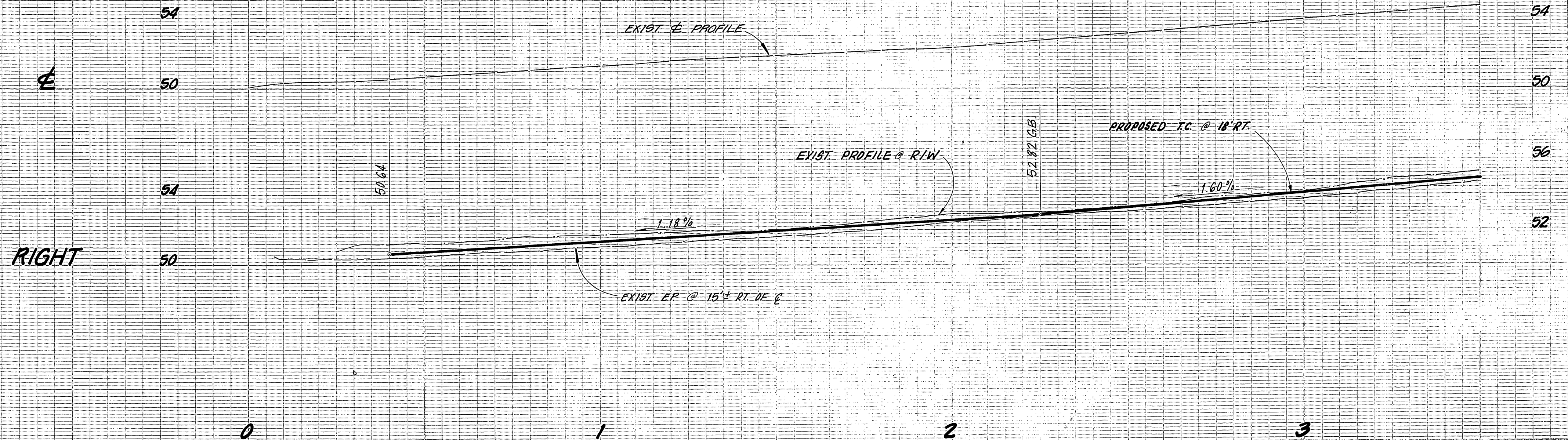


PROJECT LOCATION

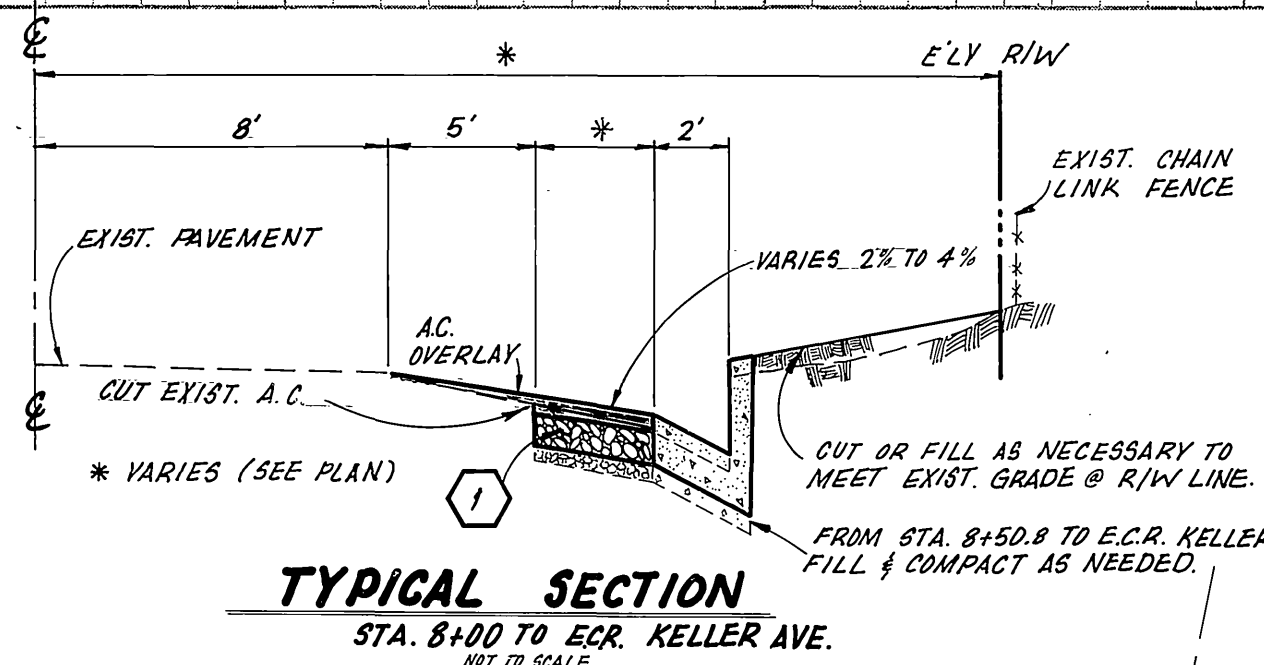


LOCATION MAP  
NO SCALE

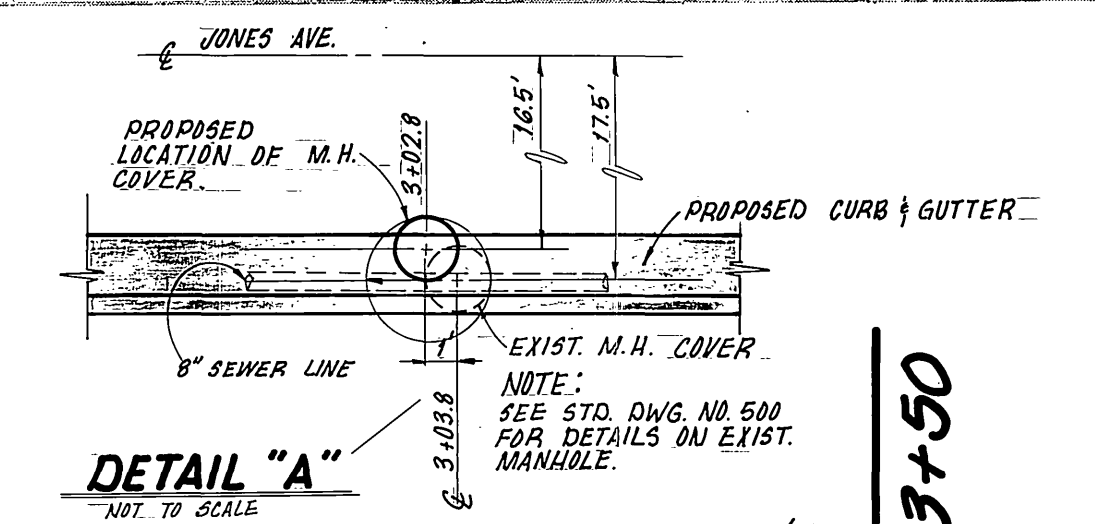
T.B.M.  
CH 5, 50 BACH OF CURB NEXT TO  
S'LY PORTION OF CATCH BASIN LOCATED  
69' S' W'LY OF E KELLER AND 20' S'  
W'LY OF E JONES AVE.  
ELEV. 765.45



TYPICAL SECTION  
STA. 0+40 TO STA. 8+00  
NOT TO SCALE



TYPICAL SECTION  
STA. 8+00 TO E.C.R. KELLER AVE.  
NOT TO SCALE



DETAIL "A"  
NOT TO SCALE

GENERAL NOTES

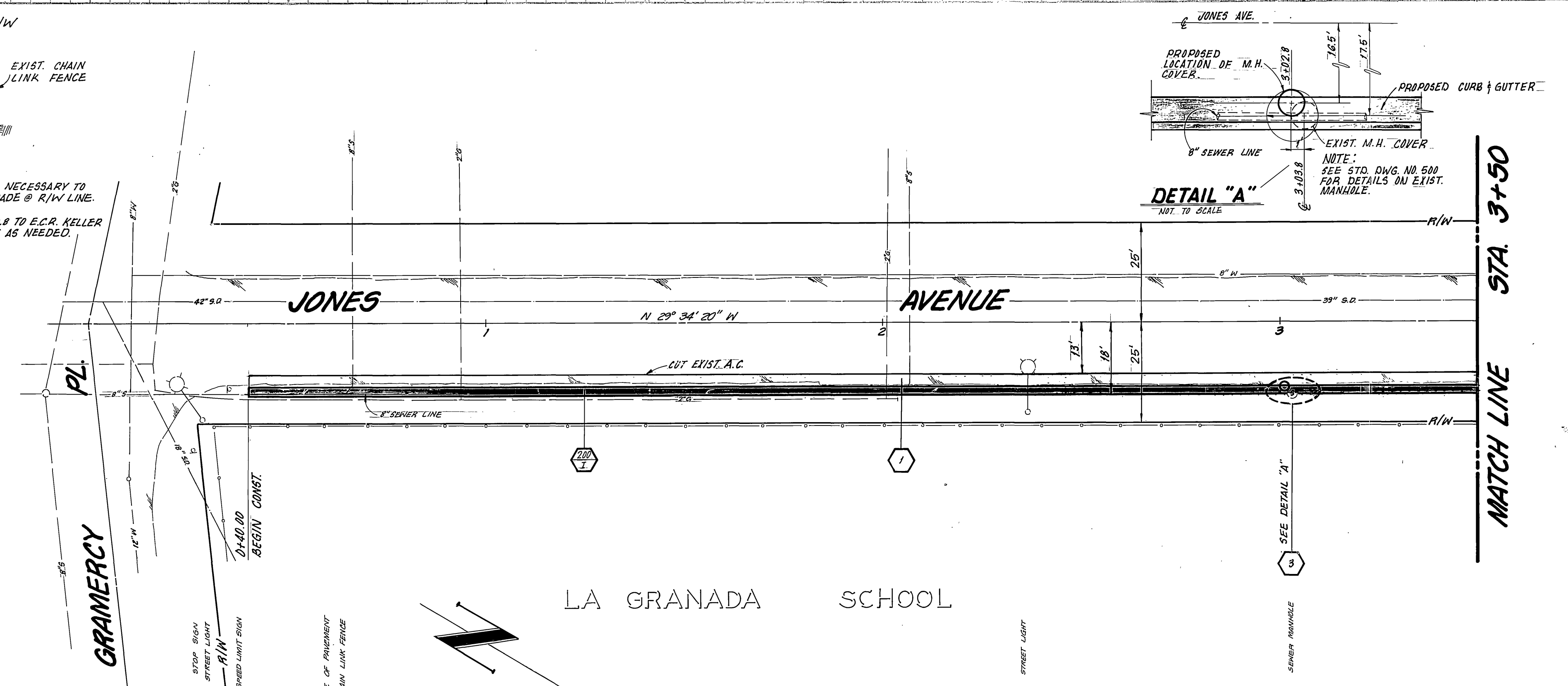
- CONSTR. SHALL BE IN ACCORDANCE WITH THE CITY OF RIVERSIDE, STD. DWGS. AND STD. SPECS. FOR PUBLIC WORKS CONSTRUCTION, 1982 EDITIONAL.
- NUMBERS ABOVE 100 IN HEXAGON ON THE PLAN REFER TO THE RESPECTIVE STANDARD DRAWING AND SHALL BE CONSTRUCTED ACCORDINGLY UNLESS MODIFICATIONS ARE NOTED ON THE PLAN BELOW. ANY NUMBER SHOWN BELOW THE STANDARD DRAWING NUMBER INDICATES THE SPECIFIC ALTERNATE TO BE CONSTRUCTED.
- ALL ELEVATIONS SHOWN ON PLAN SHALL BE STAKED IN THE FIELD.

- A.C. OVERLAY
- ASPHALT PAVING

CONSTRUCTION NOTES

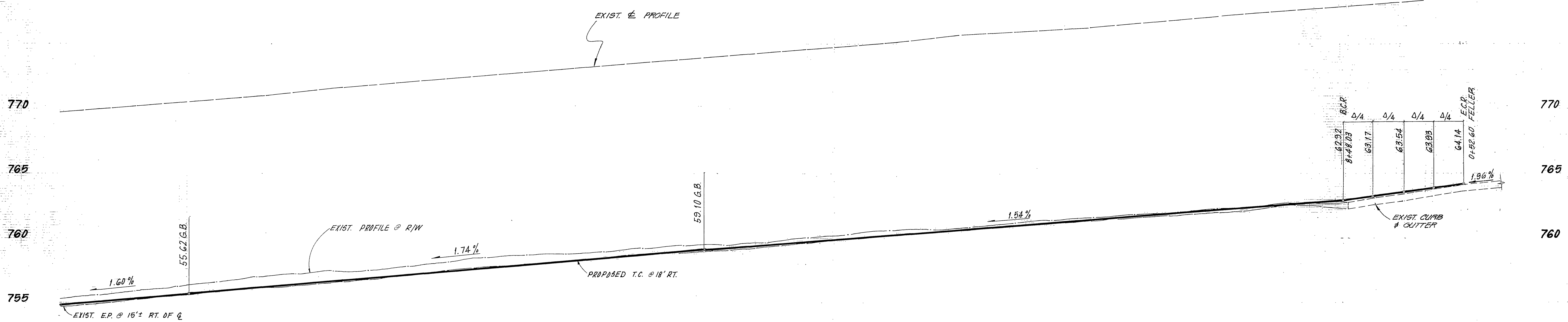
- 207 CONSTRUCT CURB & GUTTER PER STD. DWG. NO. 200 (6" C.F.)
- 304 CONSTRUCT WHEELCHAIR RAMP PER STD. DWG. NO. 304.
- 325 CONSTRUCT CONG. SIDEWALK PER STD. DWG. NO. 325.

- CONSTRUCT STRUCTURAL SECTION OF 0.21" A.C. OVER 0.89" AGGREGATE BASE OR 0.30" FULL DEPTH A.C. OVER COMPACTED NATIVE.
- ALLOW MIN. 2' CLR. BETWEEN THE POWER POLE AND EDGE OF WHEELCHAIR RAMP.
- RECONSTRUCT SEWER M.H. TO CLEAR THE PROPOSED CURB LOCATION. (SEE DETAIL "A" & SECTION 303-1.1.1 OF THE STANDARD SPECIFICATIONS.)
- SAWCUT & REMOVE EXISTING CURB & GUTTER & PORTIONS OF SIDEWALK. REMOVE EXISTING CURB RETURN & SPANDREL.
- REMOVE EXISTING TREE.
- REMOVE INTERFERING PORTIONS OF THE EXISTING CHAIN LINK FENCE OUTSIDE R/W LINE & RELOCATE TO THE R/W LINE AS SHOWN.
- PLACE NEW STRUCTURAL SECTION MEETING EXISTING EDGE OF PAVEMENT BETWEEN THE GATE VALVE AND THE NEAREST TREE. SLOPE 2% TO DRAIN TOWARD THE STREET.
- IF NECESSARY, WARP PROPOSED SIDEWALK TO MEET EXISTING IN 4".
- ADJUST WATER GATE VALVE TO GRADE.



<b>CITY OF RIVERSIDE</b> PUBLIC WORKS DEPARTMENT		<b>JONES AVENUE WIDENING</b> A.M.C.D. PROJECT		INDEX REF ACCOUNT NO. 15-550-504 <b>R-2512</b>
APPROVED BY PRINCIPAL ENGINEER PARK DEPARTMENT TRAFFIC DIVISION CHIEF P.W. ENGINEER	DATE 5/1/84 4/15/84 5/21/84 5/2/84	APPROVED BY PUBLIC WORKS DIRECTOR	DATE 5/3/84	SHEET 1 OF 2 HORIZ. SCALE: 1" = 20' VERT. SCALE: 1" = 4' CRFB LL #7, P. 41-45
DESIGNED BY: ME DRAWN BY: BMT CHECKED BY: JLL		REVISIONS APPR. DATE		



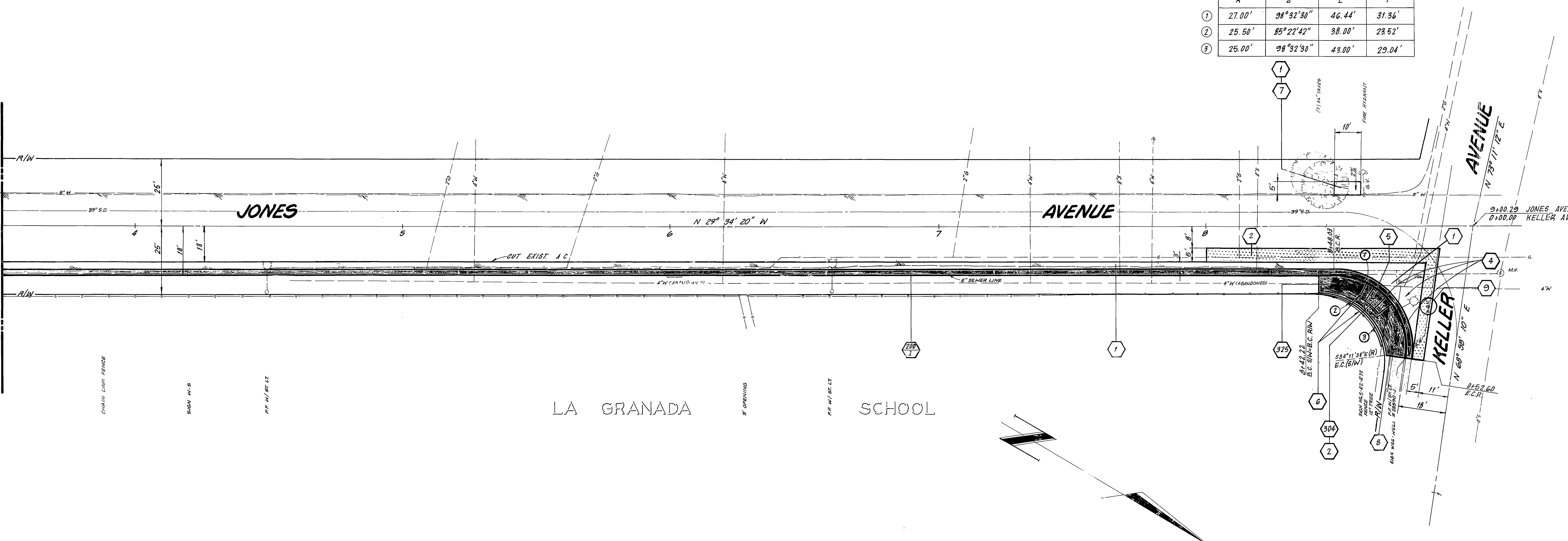


T.B.M.  
 CHS. 50. BACK OF CURB NEXT TO  
 8'LY PORTION OF CATCH BASIN  
 LOCATED 69'± N'LY OF E. KELLER &  
 20'± W'LY OF E. JONES AVE.  
 ELEV. 765.45

CURVE DATA

	R	Δ	L	T
①	27.00'	98°32'30"	46.44'	31.36'
②	25.50'	85°22'42"	38.00'	23.52'
③	25.00'	98°32'30"	43.00'	29.04'

MATCH LINE STA. 3+50



**CITY OF RIVERSIDE**  
 PUBLIC WORKS DEPARTMENT

APPROVED BY: [Signature] DATE: 5/1/84  
 PRINCIPAL ENGINEER  
 PARK DEPARTMENT  
 TRAFFIC DIVISION  
 DESIGNED BY: [Signature] DRAWN BY: [Signature] CHECKED BY: [Signature]  
 DATE: 5/2/84

**JONES AVENUE WIDENING**  
 AN H.C.D. PROJECT  
 E'LY SIDE  
 BETWEEN GRAMERCY PL. & KELLER AVE.

HORIZ. SCALE: 1" = 20' VERT. SCALE: 1" = 4'

INDEX W-  
 ACCOUNT NO. 15-550-554  
**R-2512**  
 SHEET 2 OF 2  
 C.A.F.B. LL#7, PGS 41-45