

SCALE:
 HORIZ. 1" = 40'
 VERT. 1" = 2'
 USE VARIABLE CURB HEIGHT TO MEET EXIST. CURB.

ALL NOTES APPLY TO R-2578 ONLY

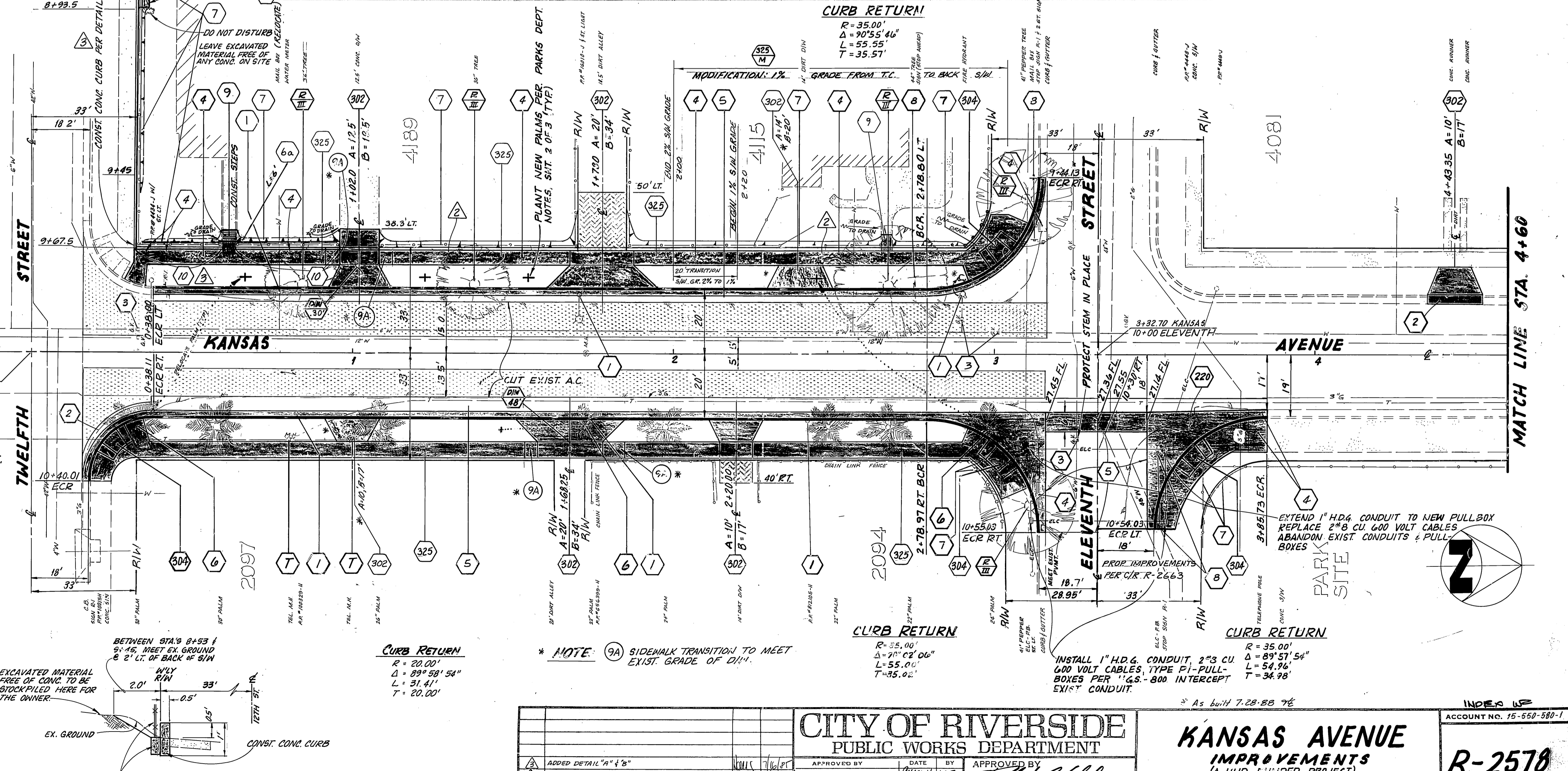
GENERAL NOTES

- CONSTRUCTION SHALL BE IN ACCORDANCE WITH THE CITY OF RIVERSIDE DEPARTMENT OF PUBLIC WORKS, STANDARD DRAWINGS, AND THE STANDARD SPECIFICATIONS FOR PUBLIC WORKS CONSTRUCTION, 1982 EDITION.
- TRIM EDGE OF EXISTING PAVEMENT WHERE NEW PAVEMENT JOINS TO A SMOOTH, STRAIGHT LINE CONSTRUCT MATCH-UP PAVING AS SHOWN ON PLAN AND OVERLAY PAVING AS DIRECTED IN THE FIELD TO PRODUCE A SMOOTH SECTION.
- NUMBERS ABOVE 100 IN A HEXAGON ON THE PLAN REFER TO THE RESPECTIVE STD. DRWG. AND SHALL BE CONSTRUCTED ACCORDINGLY, UNLESS MODIFICATIONS ARE NOTED ON THE PLAN. ANY NUMBER SHOWN BELOW THE STD. DRWG. NUMBER INDICATES THE SPECIFIC ALTERNATE TO BE CONSTRUCTED.

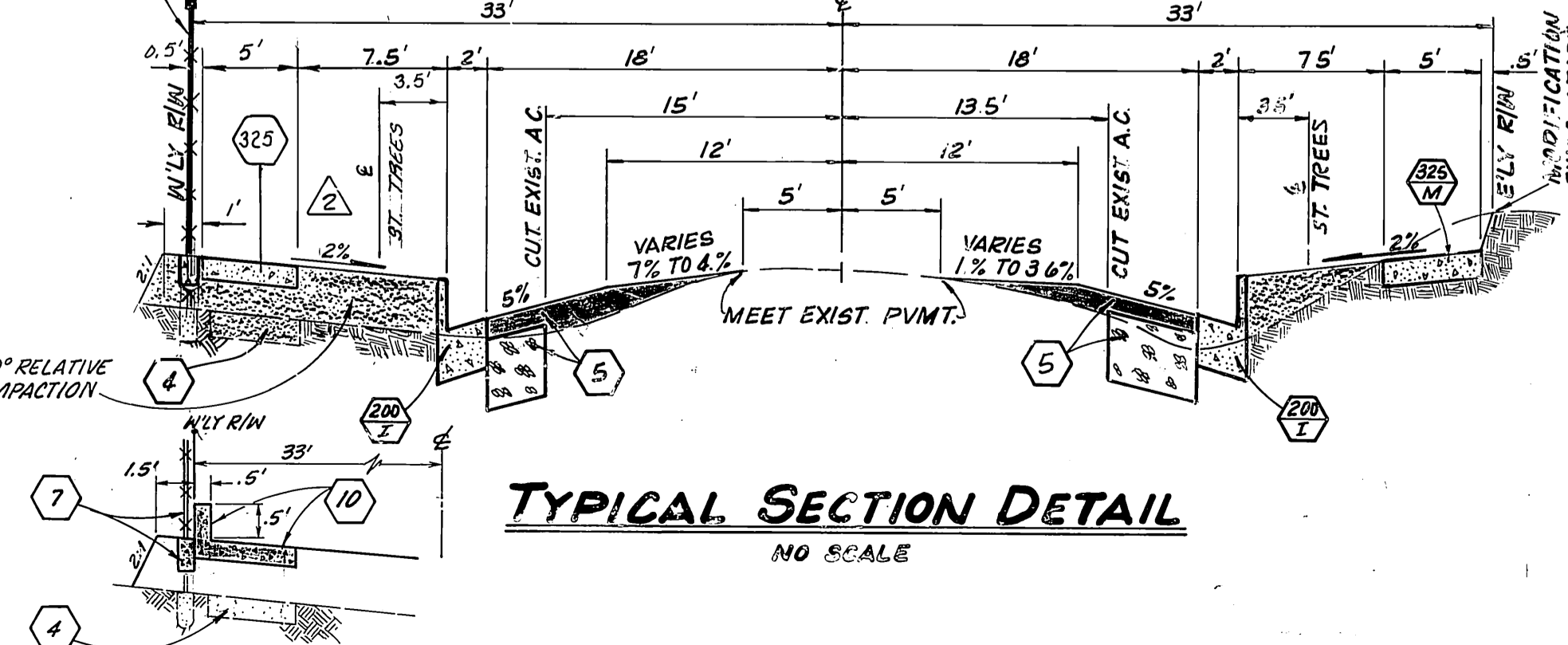
- A.C. OVERLAY
- FILL WITH DISINTEGRATED GRANITE (D.G.) RELATIVE COMPACTION 90% MIN.

CONSTRUCTION NOTES

- TO BE RELOCATED BY OTHERS.
- REMOVE & REPLACE EXISTING CURB & GUTTER AS NECESSARY.
- ADJUST GATE VALVE COVER TO GRADE.
- REMOVE EXISTING IMPROVEMENTS.
- CONSTRUCT STRUCTURAL SECTION OF 21" A.C. OVER 70' CRUSHED AGGREGATE BASE (C.A.B.).
- PALM TREE SHALL BE RELOCATED AS SHOWN ON PLAN TO THE SPECIFICATIONS OF THE PARKS AND RECREATION DEPARTMENT (SEE SHEET 2 OF 3).
- INSTALL 4" C.I.P. AS SHOWN.
- REMOVE ENTIRE TREE. CLASS IS SHOWN ON PLAN. CLASS I: 6" TO 18" DIA.; CLASS II: OVER 18" TO 36" DIA.; CLASS III: OVER 36" DIA. SPECIES THE DEPTH OF DEPRESSION AT (G.B.L.) VERT. TRANSITION OF S/W SHALL BE A MIN. OF 5" ON BOTH SIDES OF DRIVEWAY APPROACH.
- REMOVE AND REINSTALL CHAIN LINK FENCE OR GATE AS SHOWN. PROVIDE TEMP FENCING PER SPECIFICATION.
- RELOCATE SIGNS PER STD. DRWG. 662A.
- ADJUST WALKWAY TO GRADE BY CONSTRUCTING A RAMP OR STEPS AT THE OPTION OF PROPERTY OWNERS. DEPRESS BACK OF SIDEWALK AND GRADE BREAK LINE (G.B.L.) NUMBER BELOW "DIM" SPECIFIES THE DEPTH OF DEPRESSION AT (G.B.L.) VERT. TRANSITION OF S/W SHALL BE A MIN. OF 5" ON BOTH SIDES OF DRIVEWAY APPROACH.



TYPICAL SECTION DETAIL
NO SCALE



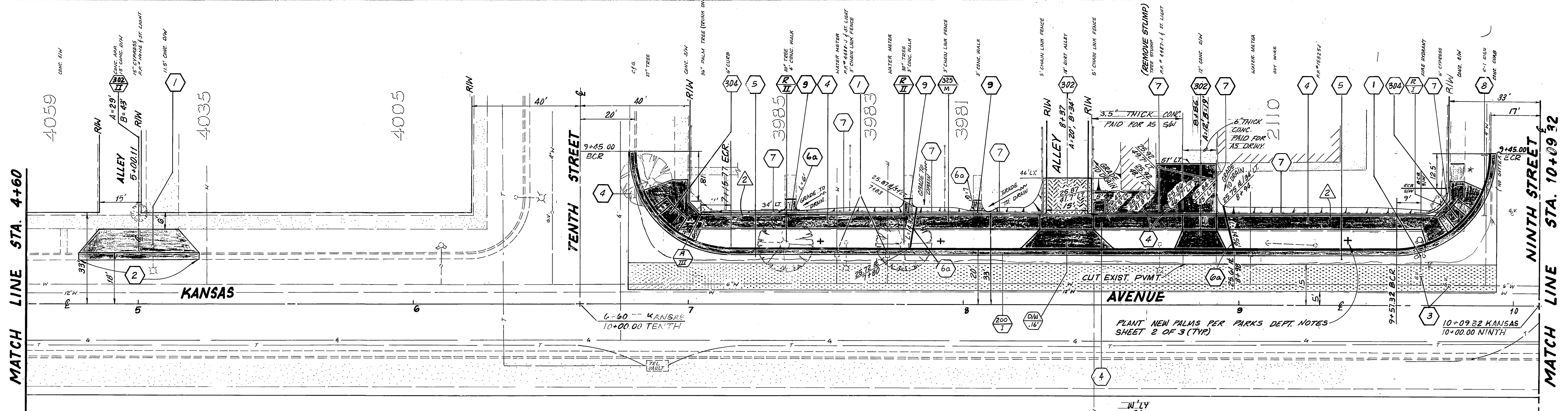
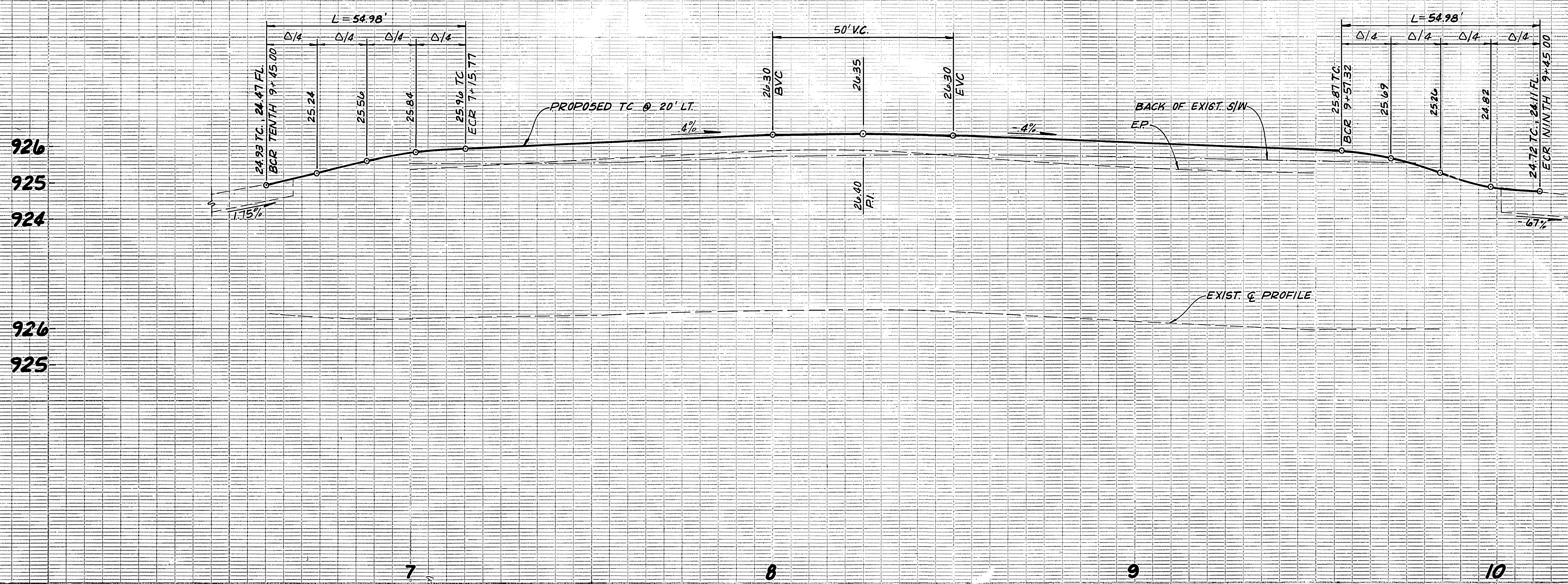
DETAIL "A"
NO SCALE



DETAIL "B"
NO SCALE



CITY OF RIVERSIDE PUBLIC WORKS DEPARTMENT		KANSAS AVENUE IMPROVEMENTS (A HUD FINANCED PROJECT)		ACCOUNT NO. 15-550-580-1
APPROVED BY: <i>[Signature]</i> DATE: 11/18/85		APPROVED BY: <i>[Signature]</i> DATE: 11/18/85		R-2578
DESIGNED BY: <i>[Signature]</i>		DRAWN BY: <i>[Signature]</i>		SHEET 1 OF 3
HORIZ. SCALE: 1" = 20'		VERT. SCALE: 1" = 2'		MATCH LINE STA. 4+60

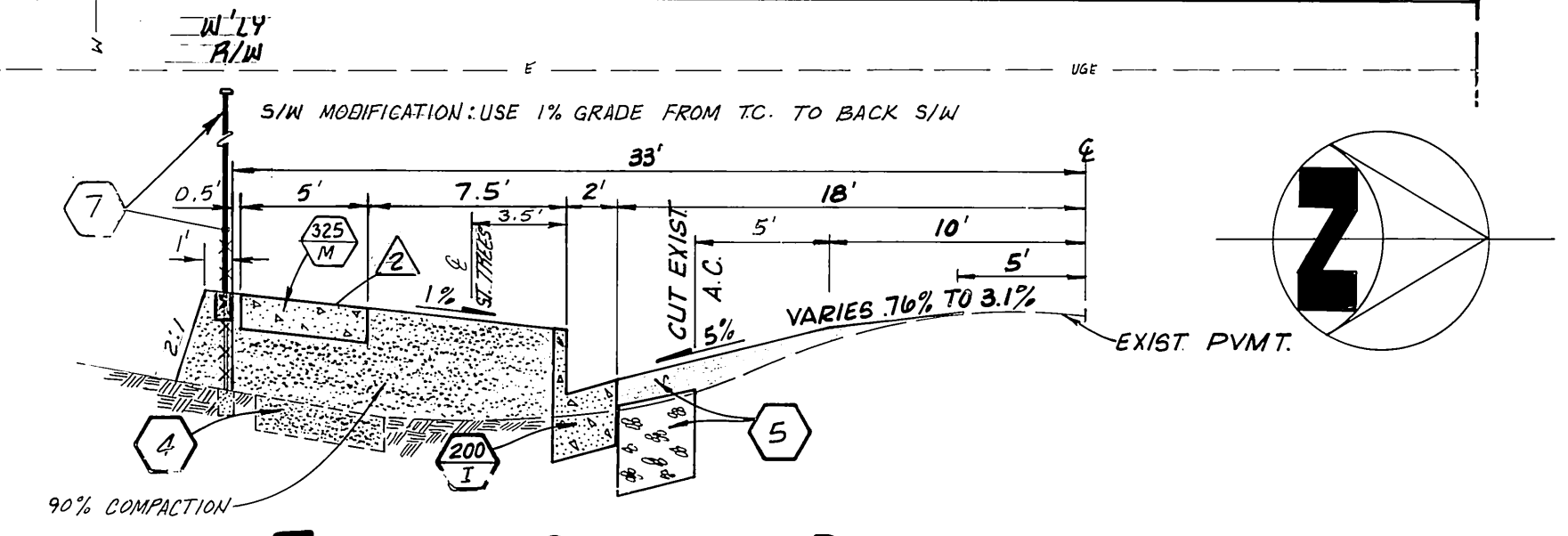


PARKS DEPT. NOTES

- All related work shall conform to the City of Riverside, Park and Recreation Department Standards.
- Contact the Park Projects Inspector a minimum of 48 hours in advance at 787-7223 to schedule inspections. Inspections shall be required:
 - when plant locations have been spotted in the field prior to digging plant pits,
 - while digging plant pits and planting/relocating trees,
 - after planting and all other indicated or specified work has been completed for start of maintenance, and
 - at end of maintenance/final acceptance. (contractor/developer will be released from maintenance only upon receipt of written notification from the city that the Park and Recreation Department is assuming maintenance responsibilities).
- The Contractor/Developer shall maintain all plantings for a minimum period of one (1) year.
- Street Tree planting shall be as follows:

Street Name	Botanical Name/Common Name	Min. Size	Approx. Spacing	No. Req.
Kansas Avenue	Washingtonia/California Filifera	4" of Brown Trunk	45'	9
	Existing Washingtonia Filiferas to be relocated as shown on plan			3

CURB RETURNS
 R = 35.00'
 Δ = 80° 00' 00"
 L = 54.98'
 T = 35.00'



TYPICAL SECTION DETAIL

DESIGNED BY: *MLC* DRAWN BY: *Shop* CHECKED BY: *MLC*

APPROVED BY: *[Signature]* DATE: *1/14/85*

PRINCIPAL ENGINEER: *[Signature]* DATE: *1/15/85*

PARK DEPARTMENT: *[Signature]* DATE: *1-2-85*

TRAFFIC DIVISION: *[Signature]* DATE: *1-2-85*

CHEF P. W. ENGINEER: *[Signature]* DATE: *1-14-85*

KANSAS AVENUE IMPROVEMENTS
 (A HUD FUNDED PROJECT)

TWELFTH STREET to UNIVERSITY AVENUE

HORIZ. SCALE: 1" = 20' VERT. SCALE: 1" = 2'

NO SCALE * As built 7.28.85 TE

INDEX W/ COURT NO. 15-550-580-1

R-2578

SHEET 2 OF 3

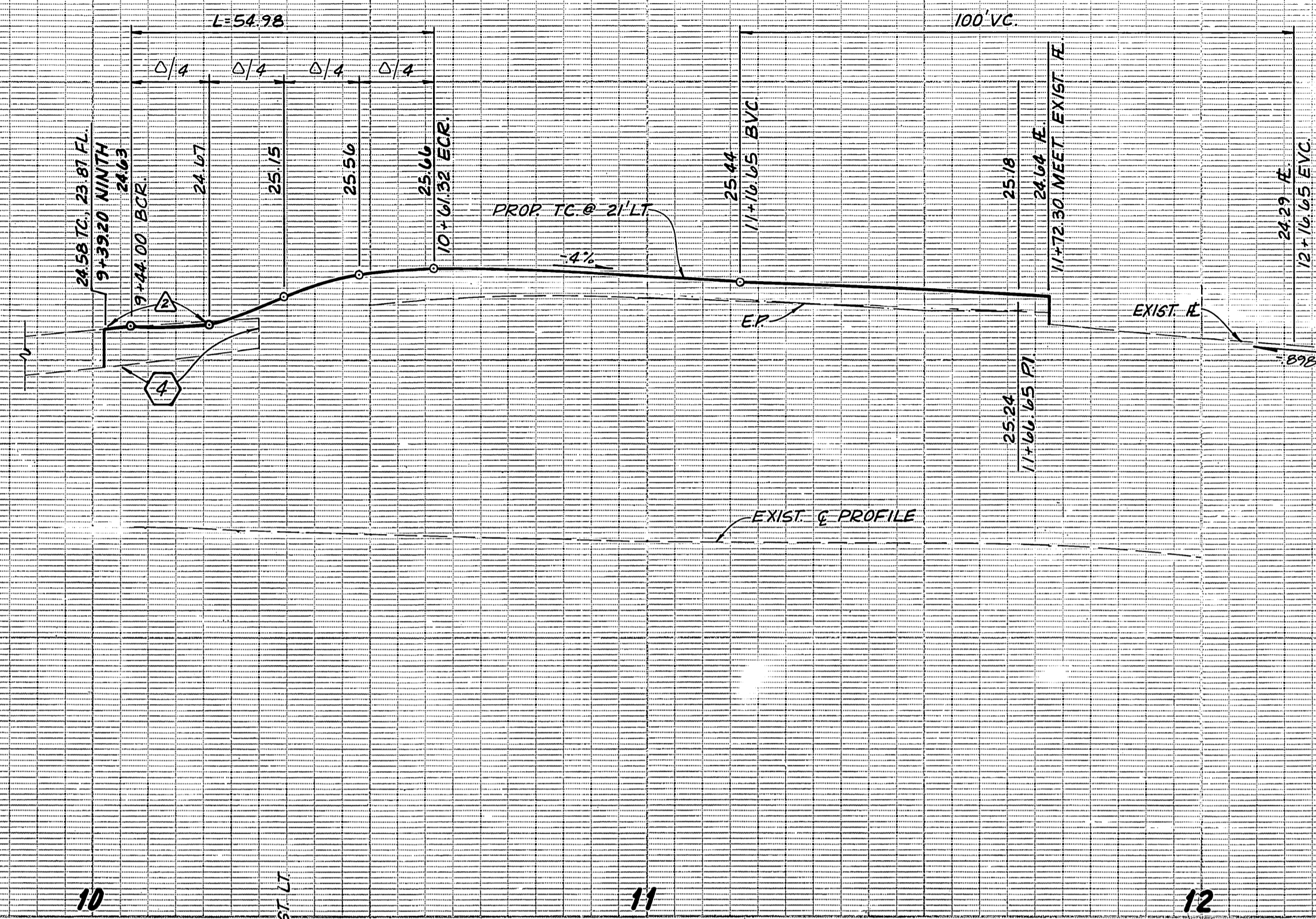
USE VARIABLE CURB HEIGHT TO MEET EXIST CURB

927

925

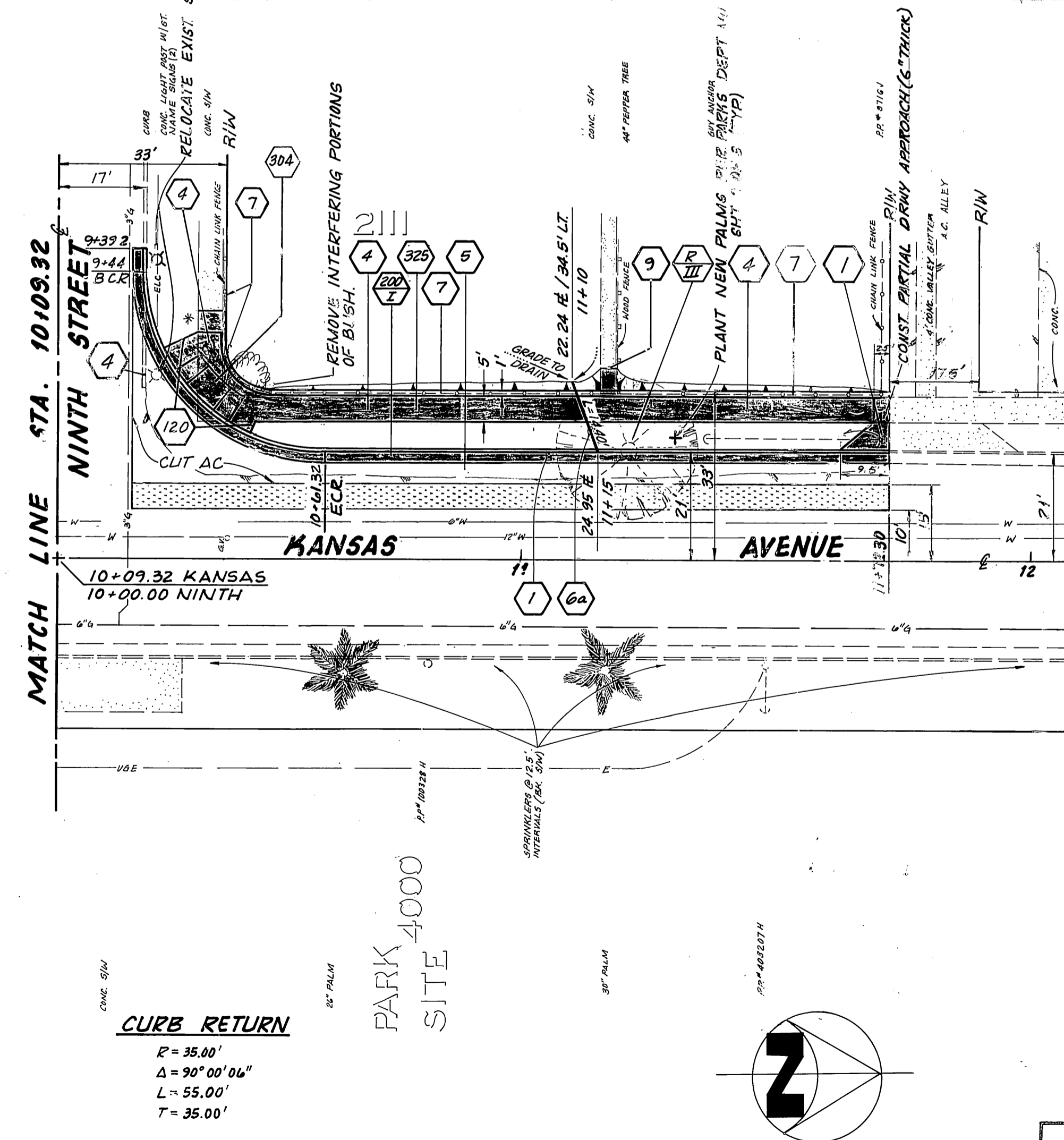
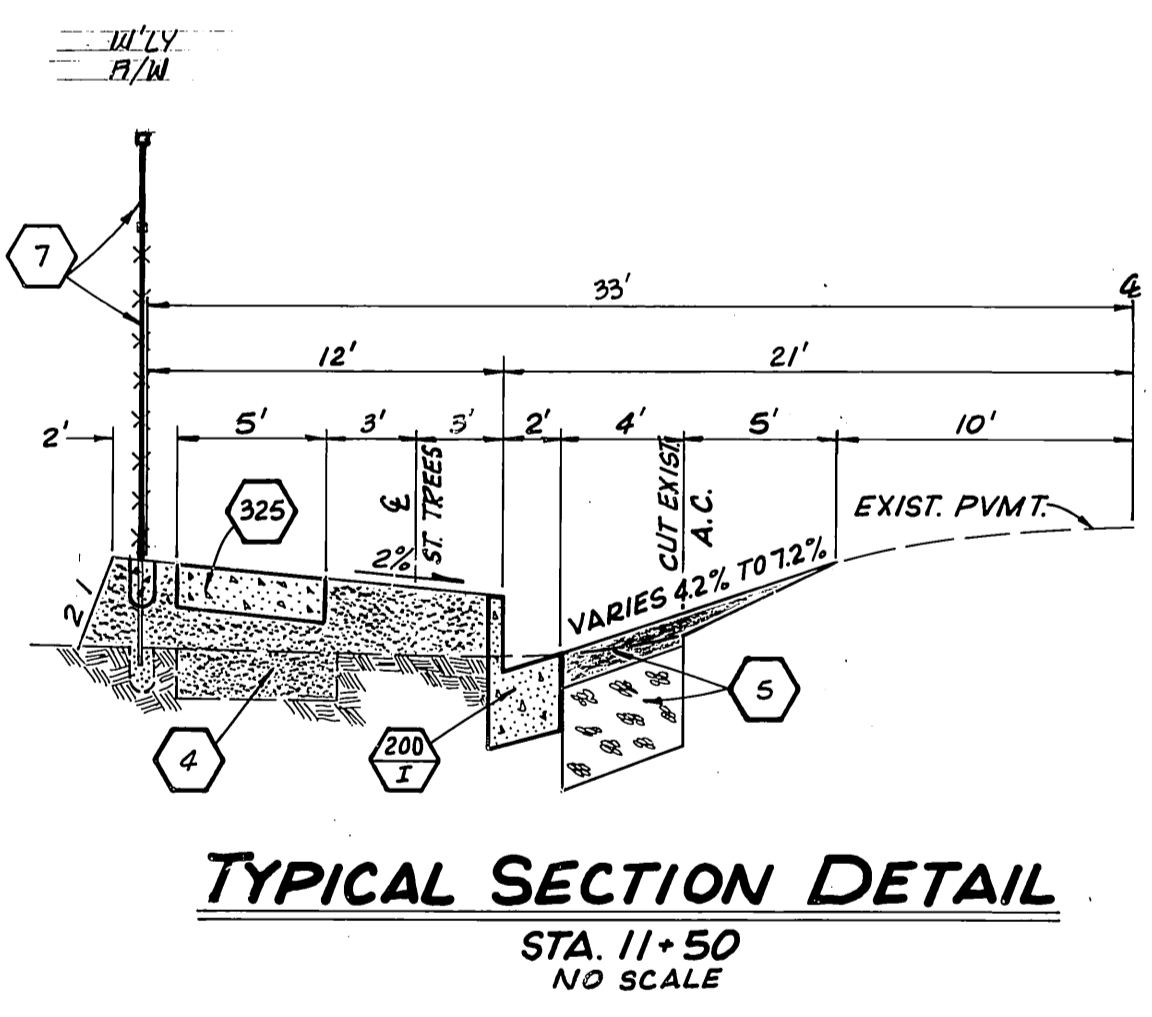
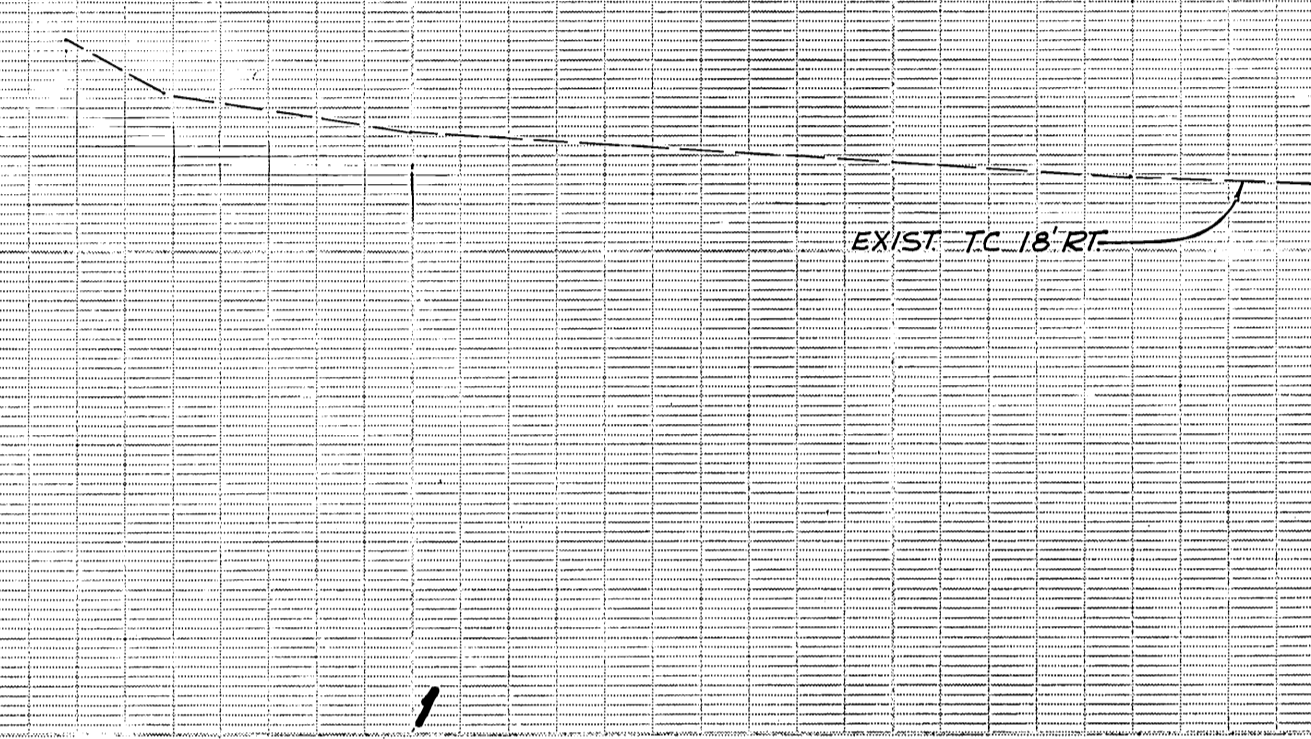
927

925



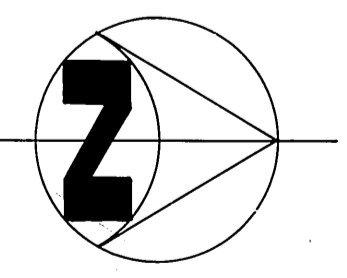
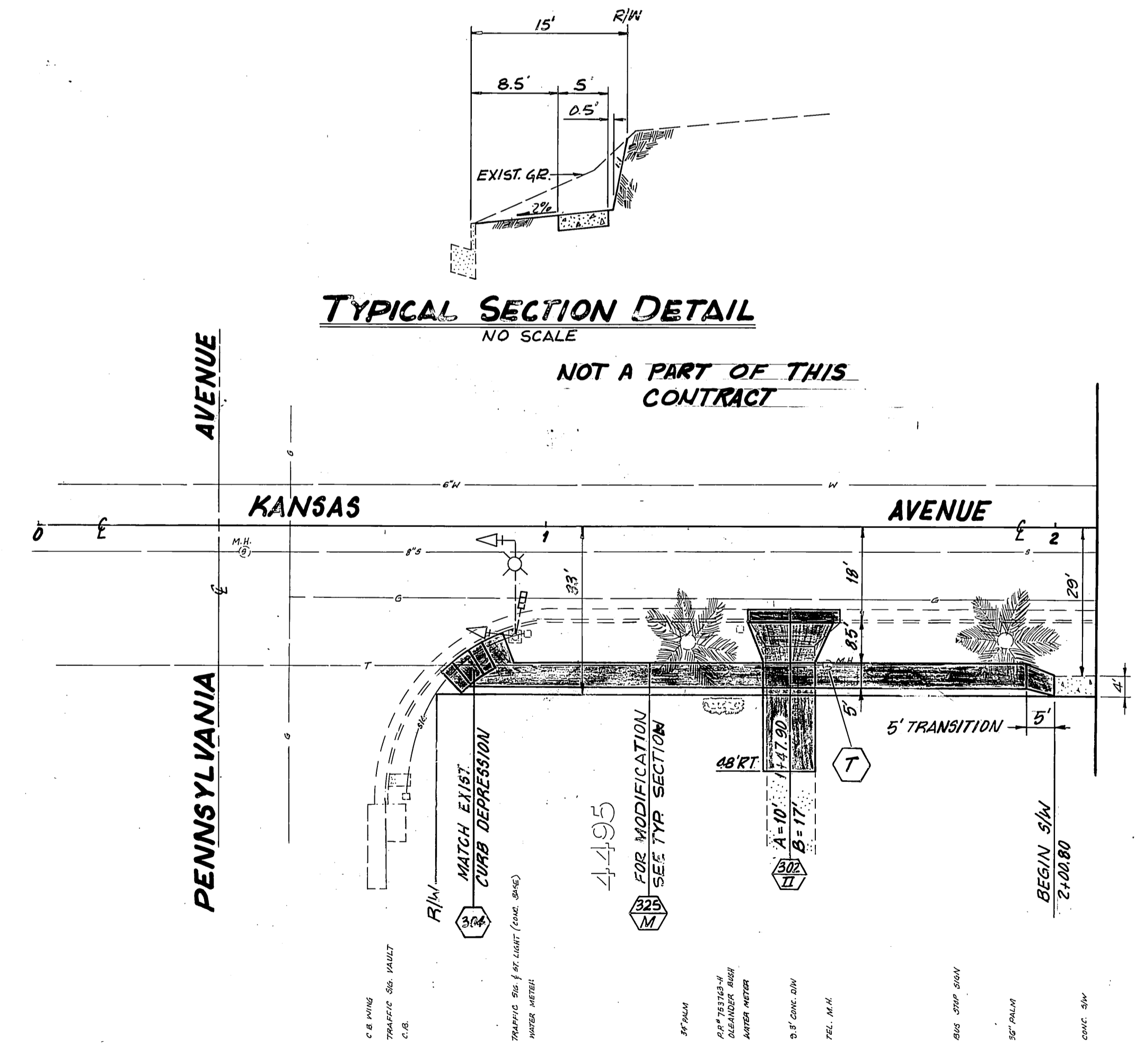
939

936



TYPICAL SECTION DETAIL
NO SCALE

NOT A PART OF THIS CONTRACT



CITY OF RIVERSIDE PUBLIC WORKS DEPARTMENT		KANSAS AVENUE IMPROVEMENTS (A HUD FUNDEL PROJECT)		ACCOUNT NO. 15-550-580-1
APPROVED BY 	DATE 11-14-85	APPROVED BY 	DATE 11/4/85	R-2578
DESIGNED BY 	DRAWN BY 	CHECKED BY 	PUBLIC WORKS DIRECTOR	SHEET 3 OF 3
REVISIONS 1. 11-14-85		TWELFTH STREET to UNIVERSITY AVENUE		HORIZ. SCALE: 1" = 20' VERT. SCALE: 1" = 2'