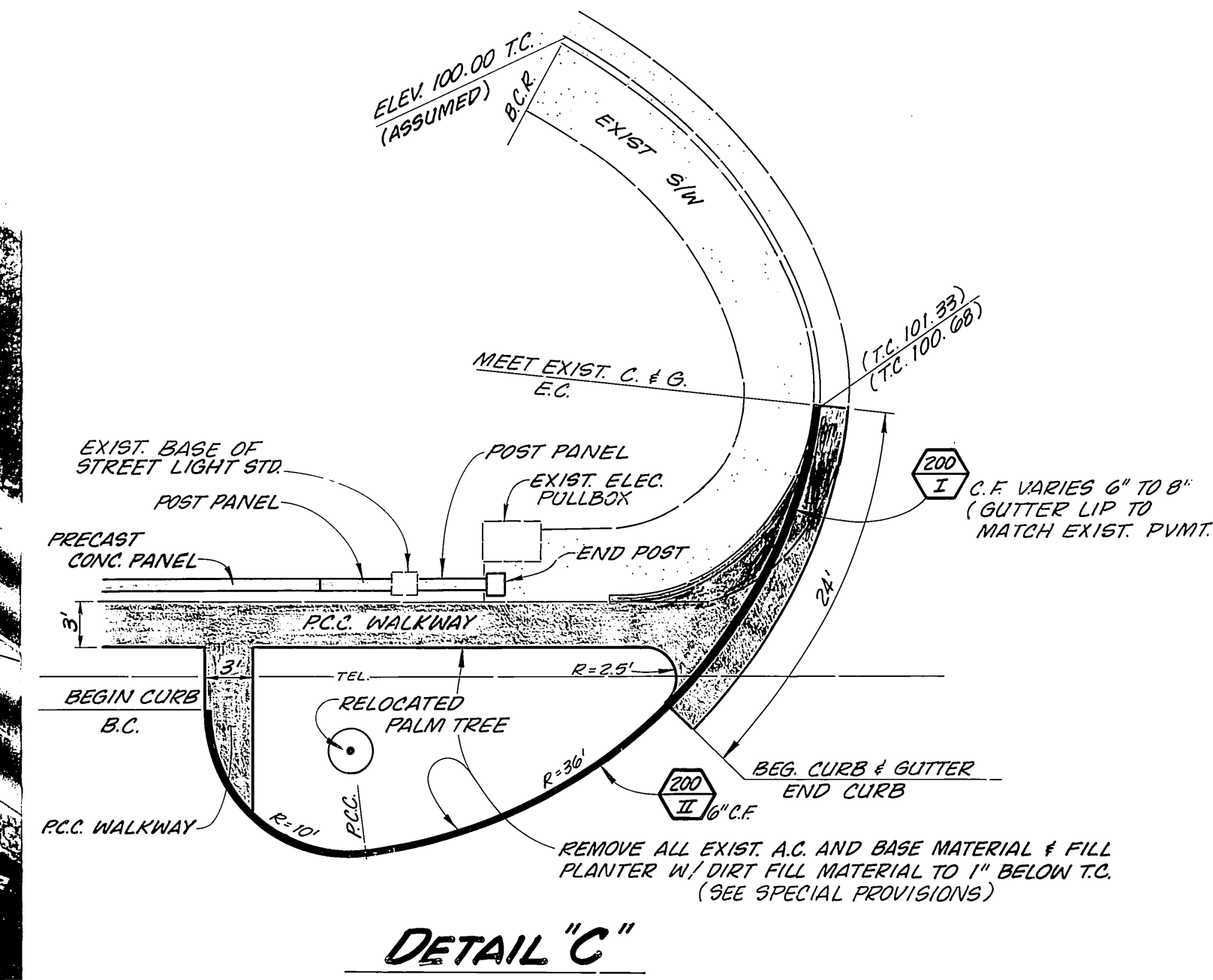


NOTE: CONTRACTOR SHALL PROTECT EXIST SPRINKLER HEADS ON CARLSON PARK. DISTURBED LANDSCAPING SHALL BE RESTORED IN KIND.

FUTURE CONSTRUCTION (PHASE II) N.I.C.

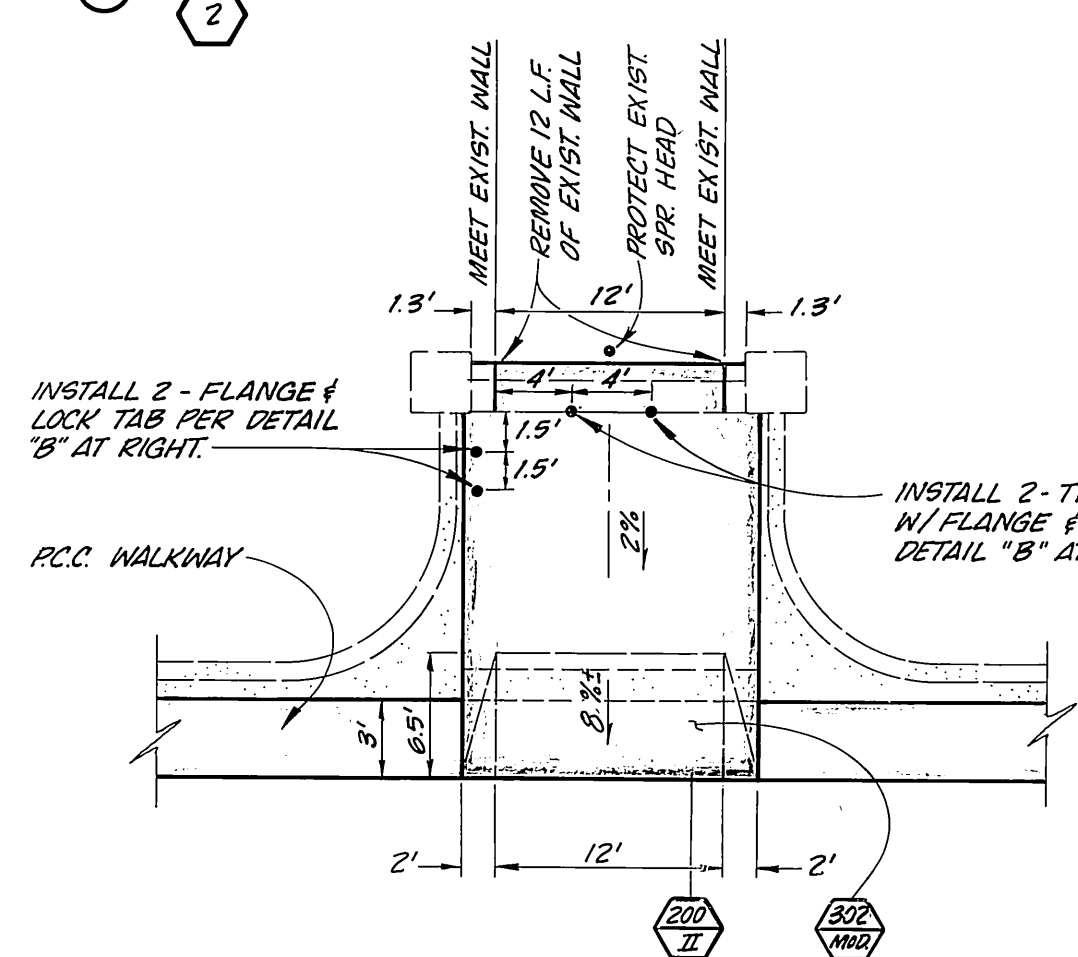


GENERAL NOTES

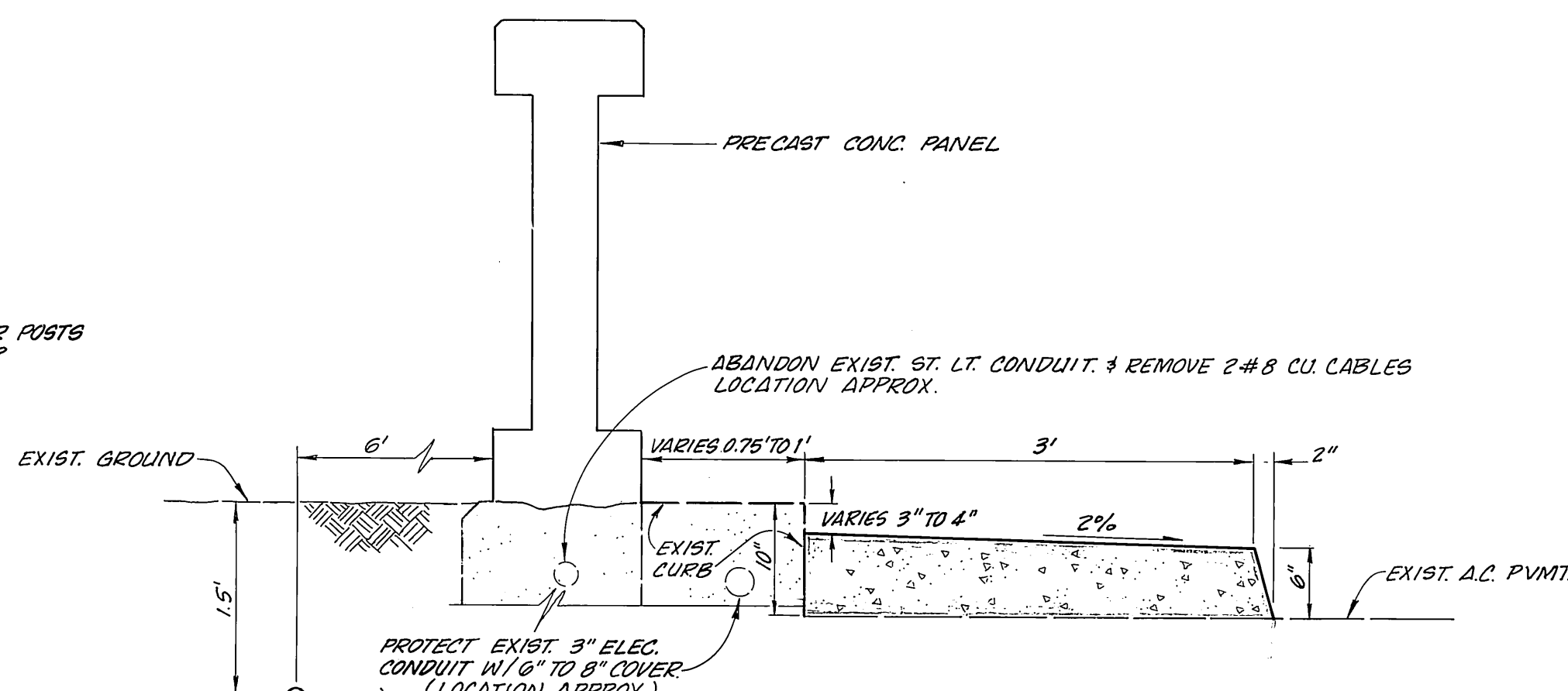
1. CONSTRUCTION SHALL BE IN ACCORDANCE WITH THE CITY OF RIVERSIDE STANDARD DRAWINGS AND STANDARD SPECIFICATIONS FOR PUBLIC WORKS CONSTRUCTION 1985 EDITION.

CONSTRUCTION NOTES

- ② - REMOVE & REPLACE EXIST. ST. LT. STANDARDS. NUMBER INDICATES THE LOCATION OF STREET LIGHT. LIGHT STANDARD @ LOCATION ① IS NOT EXISTING. EXACT LOCATION OF REPLACEMENT WILL BE DETERMINED IN THE FIELD DURING CONSTRUCTION.
- ① - 2 SECTIONS OF 4 RAINCROSS PANELS.
2 SECTIONS OF 5 RAINCROSS PANELS.
1 SECTION OF 6 RAINCROSS PANELS.
5 BLANK PANELS
- ② - 2 SECTIONS OF 6 RAINCROSS PANELS.
1 BLANK PANEL
- ③ - 2 SECTIONS OF 4 RAINCROSS PANELS.
2 SECTIONS OF 5 RAINCROSS PANELS.
2 SECTIONS OF 7 RAINCROSS PANELS.
1 SECTION OF 8 RAINCROSS PANELS.
6 BLANK PANELS
- ④ - 1 SECTION OF 7 RAINCROSS PANELS.
1 SECTION OF 5 RAINCROSS PANELS.
1 BLANK PANEL
- ⑤ - 5 SECTIONS OF 6 RAINCROSS PANELS.
2 SECTIONS OF 4 RAINCROSS PANELS.
6 BLANK PANELS
- ⑥ - 2 SECTIONS OF 6 RAINCROSS PANELS.
3 SECTIONS OF 5 RAINCROSS PANELS.
2 SECTIONS OF 4 RAINCROSS PANELS.
7 BLANK PANELS
- ⑦ - REMOVE TREE. SEE SPECIAL PROVISIONS FOR TREE DIA. & CLASS INVOLVED. (PHASE I ONLY)
- ⑧ SALVAGE SHAFT OF ST. LT. STANDARD

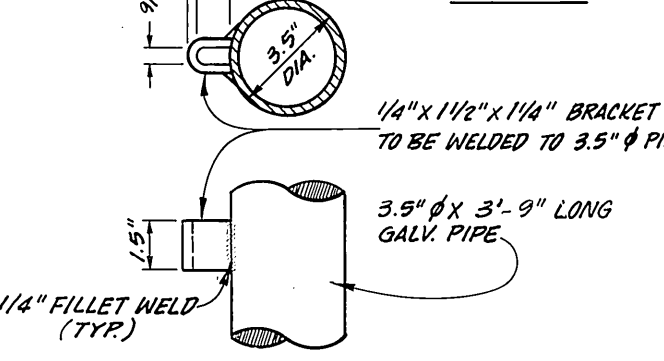


DETAIL 'A'
NO SCALE



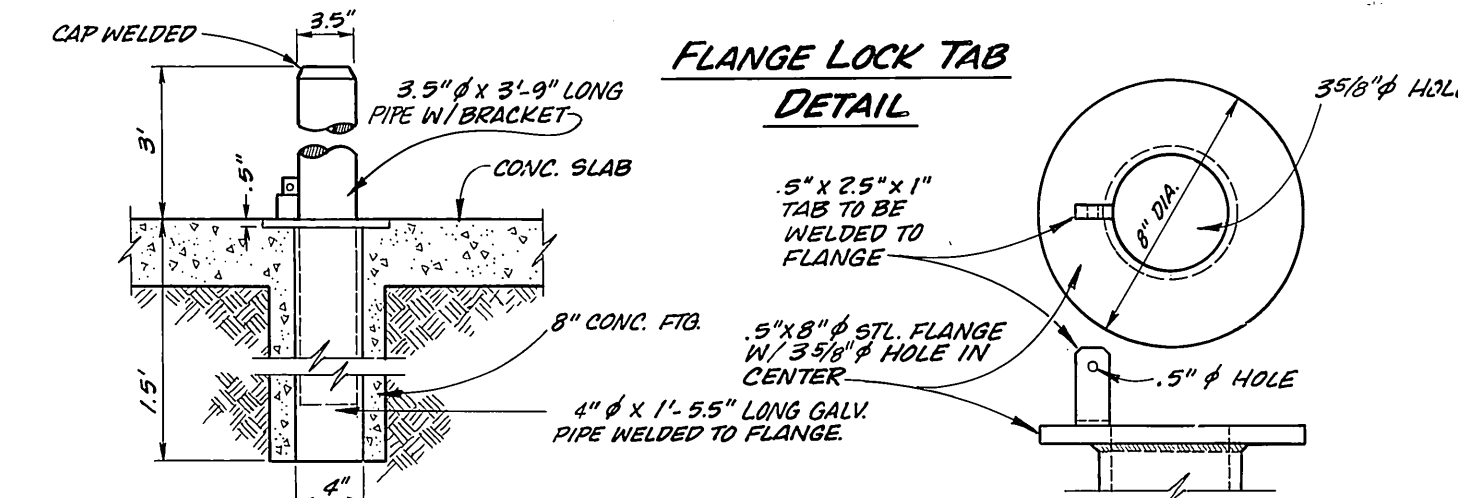
SECTION OF P.C.C. WALKWAY
NO SCALE
LIMITS AS SHOWN ON PLAN

PIPE BRACKET DETAIL



GENERAL NOTES

- 1. ALL PIPE DIMENSIONS SHOWN ARE OUTSIDE DIA.
- 2. PIPE BRACKET DIMENSIONS SHOULD BE SLIGHTLY OVERSIZED TO ALLOW FOR PROPER FIT W/ LOCK TAB.
- 3. ALL COMPONENTS OF TRAFFIC BARRIER TO BE GALV. AFTER ALL DRILLING & WELDING IS COMPLETED.

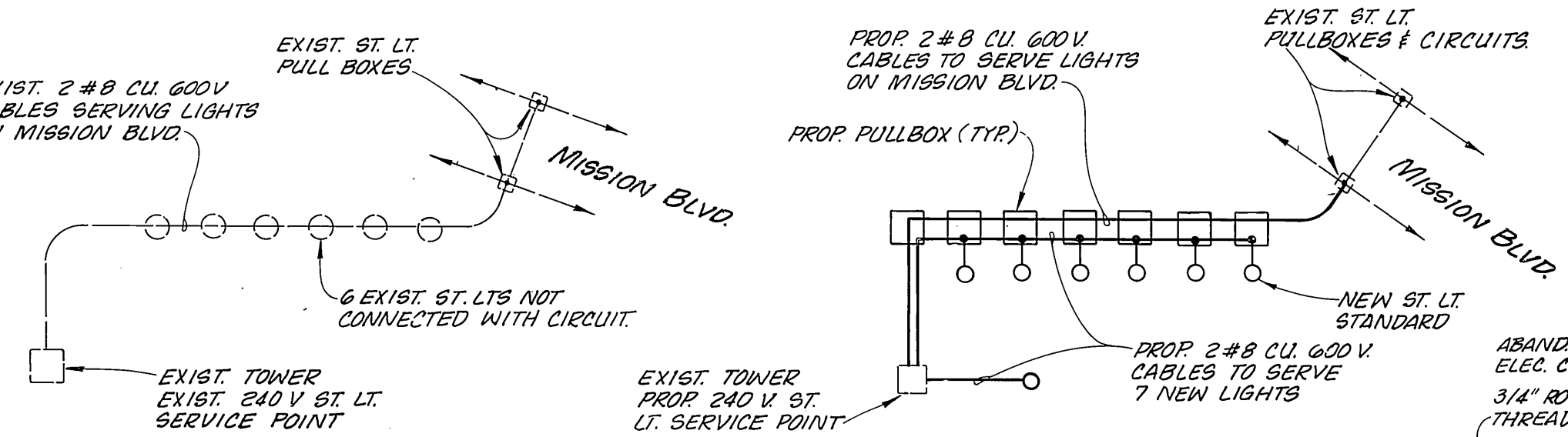
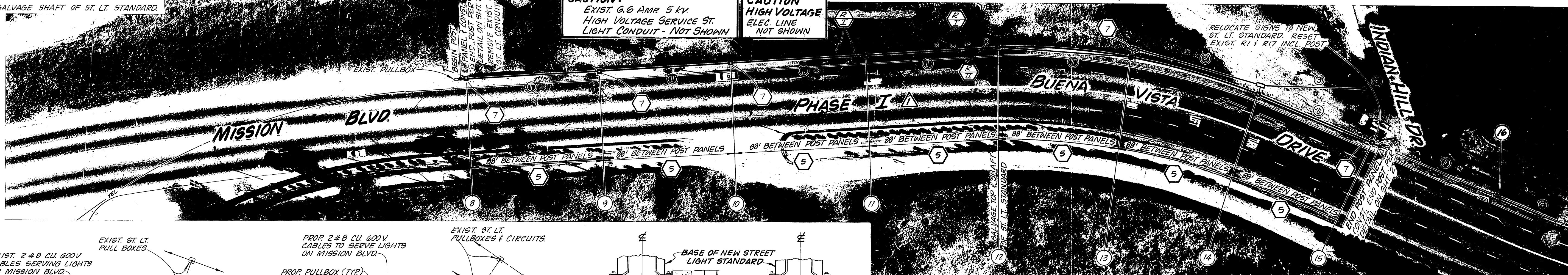


TRAFFIC BARRIER POST DETAIL 'B'

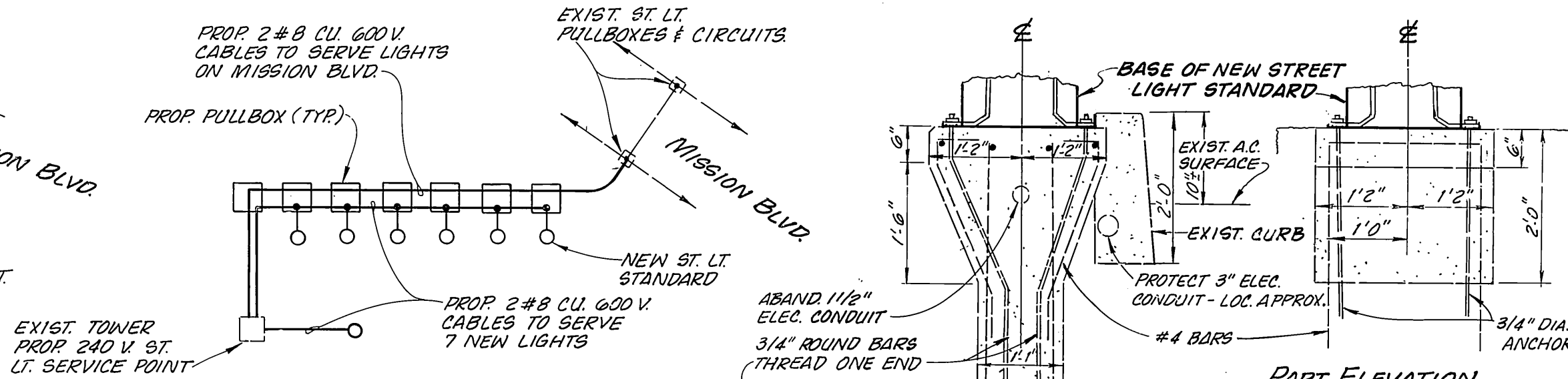
NO SCALE

CAUTION:
EXIST. G.G. AMR 5 KV
HIGH VOLTAGE SERVICE ST.
LIGHT CONDUIT - NOT SHOWN

CAUTION:
HIGH VOLTAGE
ELEC. LINE
NOT SHOWN



EXIST. ST. LT. CIRCUIT
NO SCALE
(CARLSON PARK)



PROP. ST. LT. CIRCUIT
NO SCALE
(CARLSON PARK)

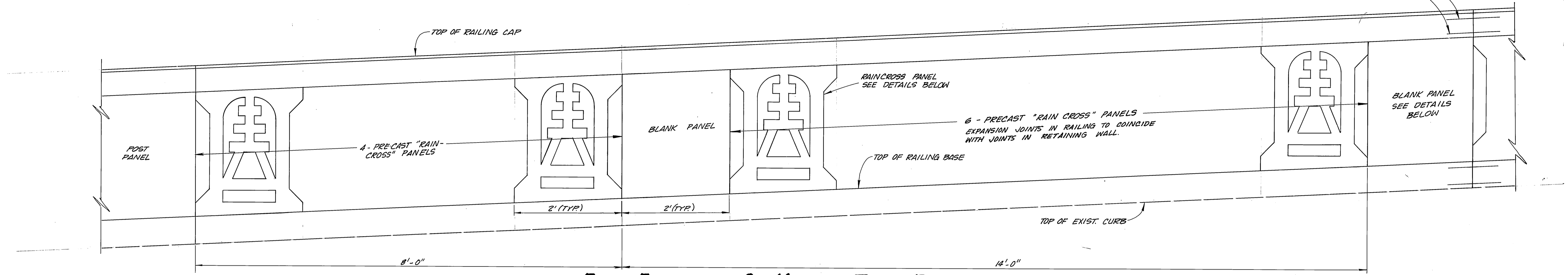
DETAILS OF RETAINING WALL
SHOWING METHOD OF SUPPORTING LIGHT STANDARD @ BUENA VISTA DRIVE LOCATION

NO SCALE

- NOTES:**
- 1. SEE MAP IN SPEC. PROVISIONS FOR LIGHTS NO. ⑬ THROUGH ⑳
 - 2. SALVAGE SHAFT OF STREET LIGHT STD. NO. ⑲
 - 3. SALVAGE TOP OF STREET LIGHT STD. NO. ⑳
 - 4. SALVAGE ALL FIXTURES INCLUDING GLOBES WHICH ARE IN GOOD CONDITION.

<p>CONSTRUCTION TO BE DONE ALONG BUENA VISTA DR. LOCATION UNDER PHASE I. Det 1-9-86</p>		<p>CITY OF RIVERSIDE PUBLIC WORKS DEPARTMENT</p>		<p>EMERGENCY JOBS BILL 1983 BUENA VISTA DRIVE - CARLSON PARK</p>		<p>ACCOUNT NO. 15-551-458 R-2582</p>	
<p>APPROVED BY PRINCIPAL ENGINEER PARK DEPARTMENT TRAFFIC DIVISION CHIEF P.W. ENGINEER</p>	<p>DATE 6-28-86</p>	<p>APPROVED BY PUBLIC WORKS DIRECTOR</p>	<p>DATE JULY 16, 1985</p>	<p>MT. RUBIDOUX BRIDGE TO SANTA ANA RIVER</p>		<p>SHEET 1 OF 2</p>	
<p>DESIGNED BY: DRAWN BY: CHECKED BY:</p>				<p>HORIZ. SCALE: 1" = 40'</p>			

INSTALL DOWELS @ CONSTRUCTION JOINTS @ MIDPOINT BETWEEN POST PANELS WITH LENGTH OF 88" OR MORE. DOWELS SHALL BE #3 BAR X 1' LONG, GREASE ONE END 6"± (TYP @ RAILING CAP AND BASE). TOTAL ± 8

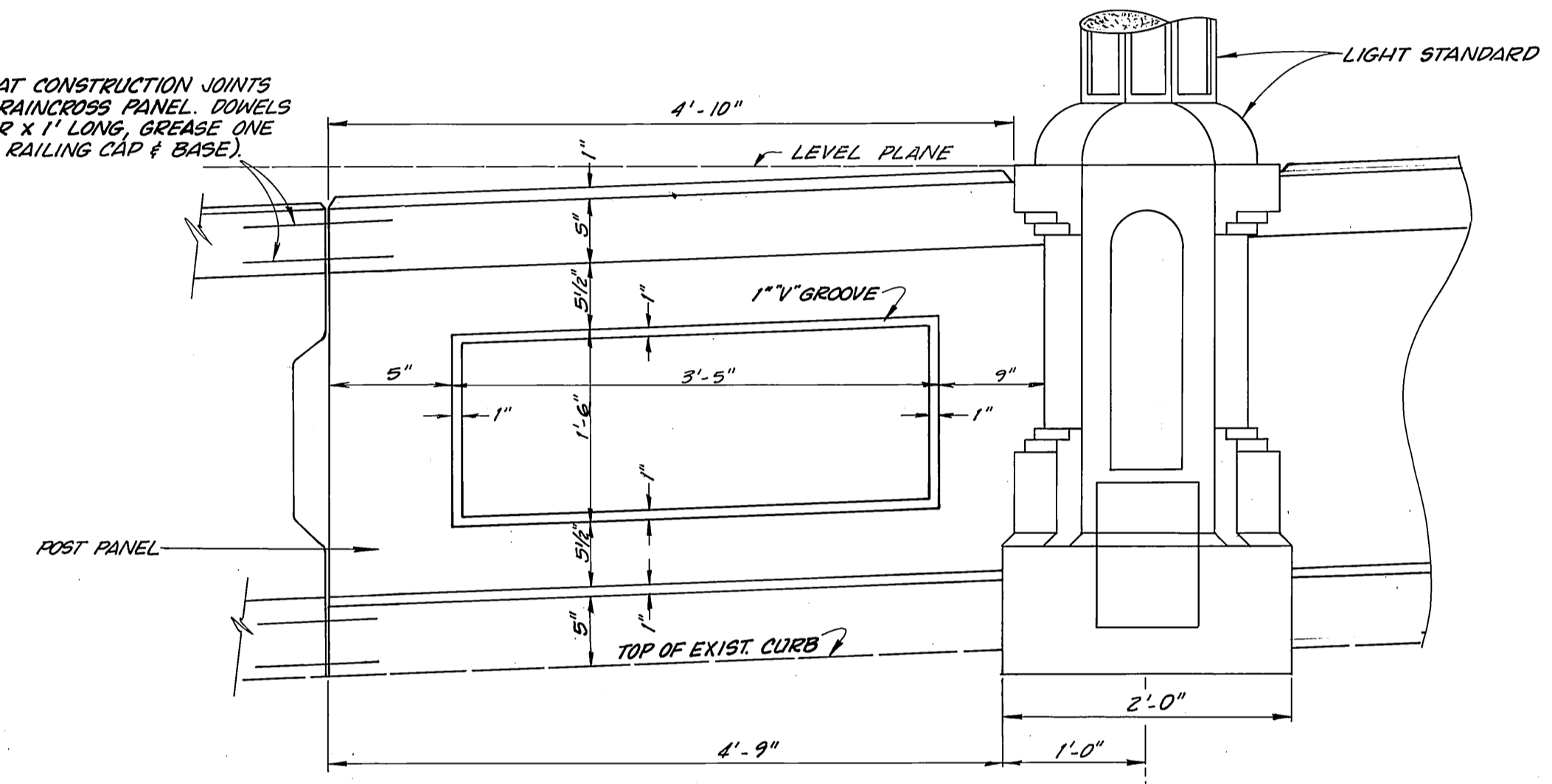


PART ELEVATION OF MISSION TYPE RAILING

BASE AND CAP TO BE CAST IN PLACE
SCALE: 1" = 1'

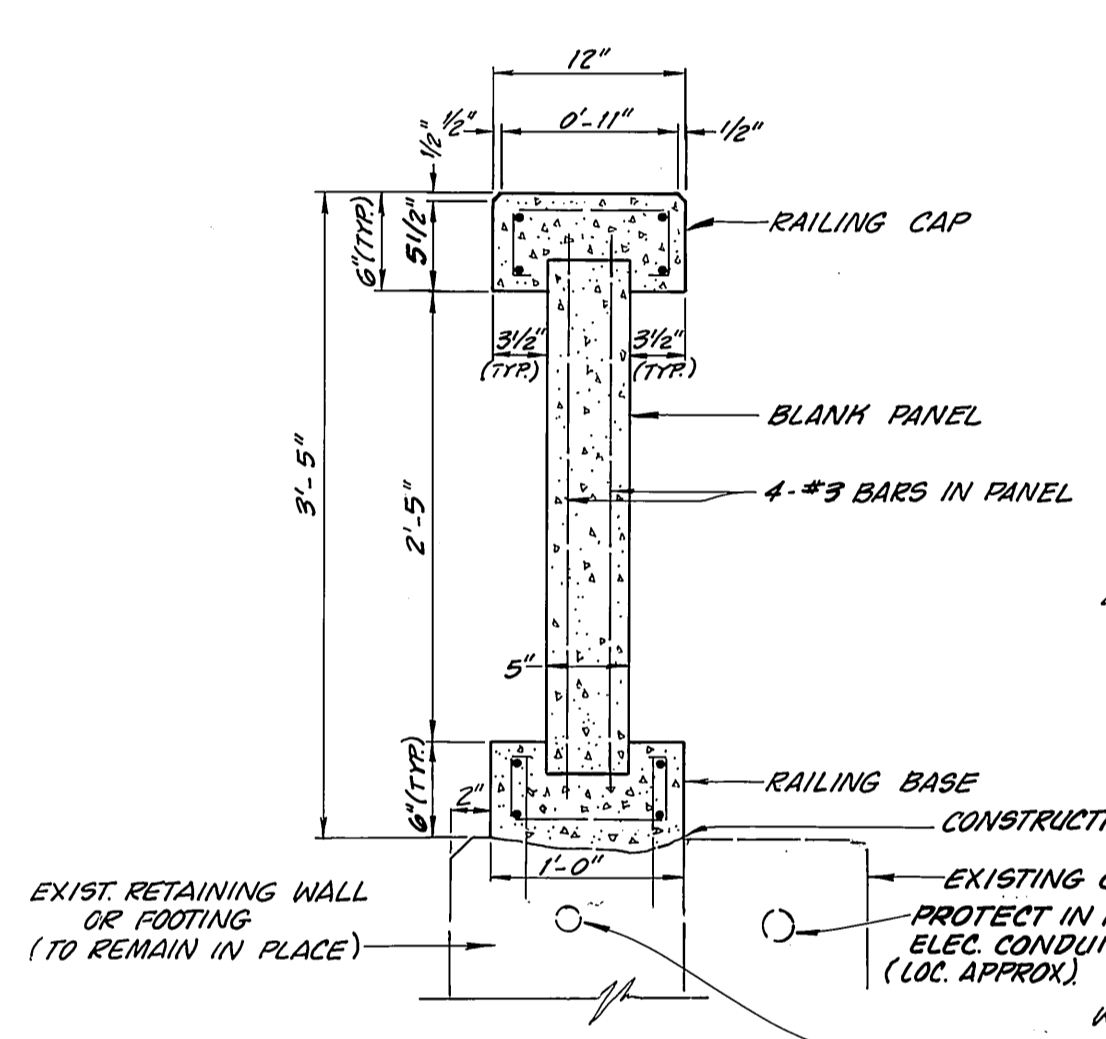
INSTALL DOWELS AT CONSTRUCTION JOINTS BETWEEN POST & RAINCROSS PANEL. DOWELS SHALL BE #3 BAR X 1' LONG, GREASE ONE END 6"± (TYP @ RAILING CAP & BASE) (TOTAL OF 4)

5 SECTIONS OF 6 RAINCROSS PANELS EACH
2 SECTIONS OF 4 RAINCROSS PANELS EACH
6 BLANK PANELS } 88" BETWEEN POST PANELS



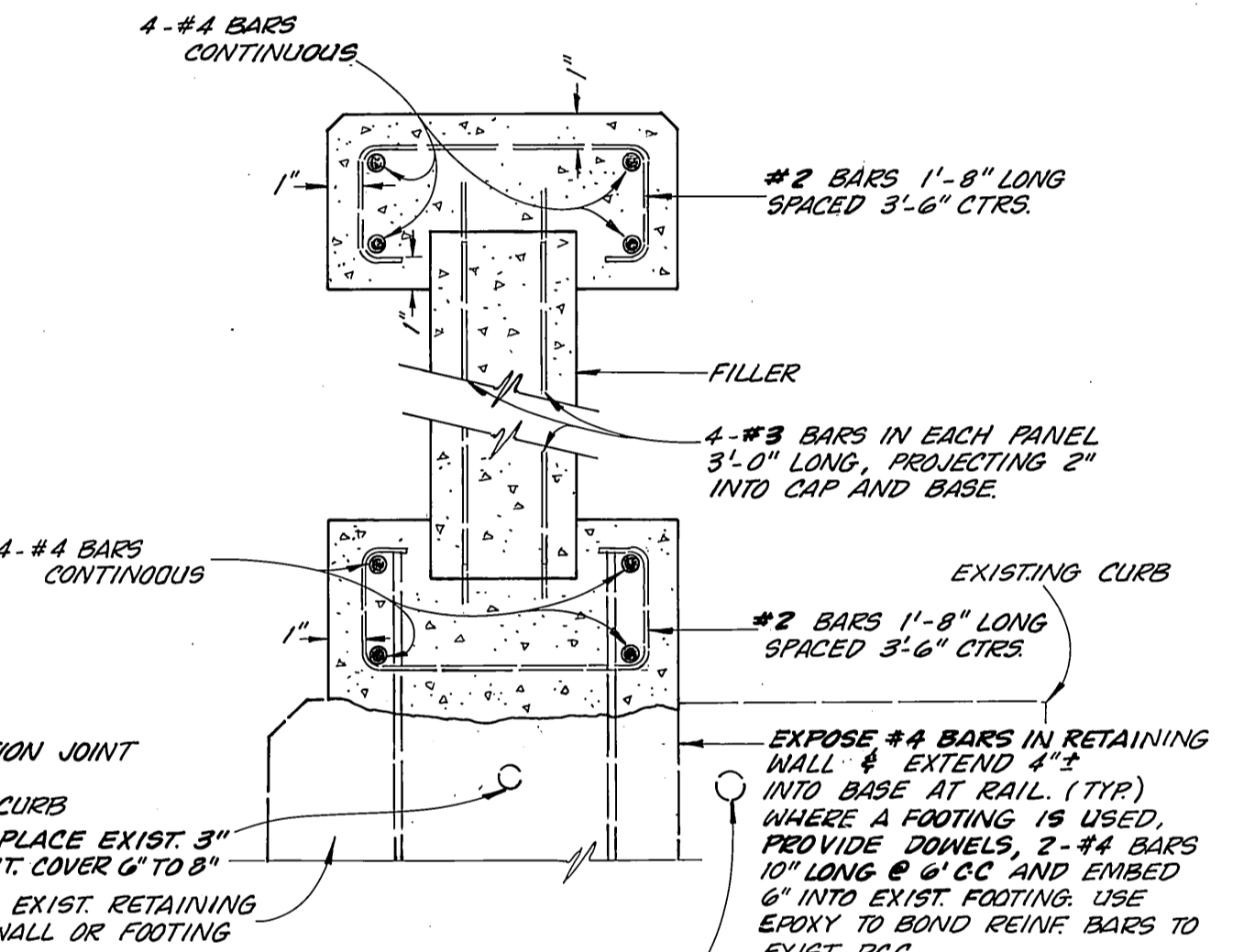
ELEVATION OF POST PANEL

TO BE CONSTRUCTED IN RAILING EACH SIDE OF LIGHT STANDARD
SCALE: 1" = 1'



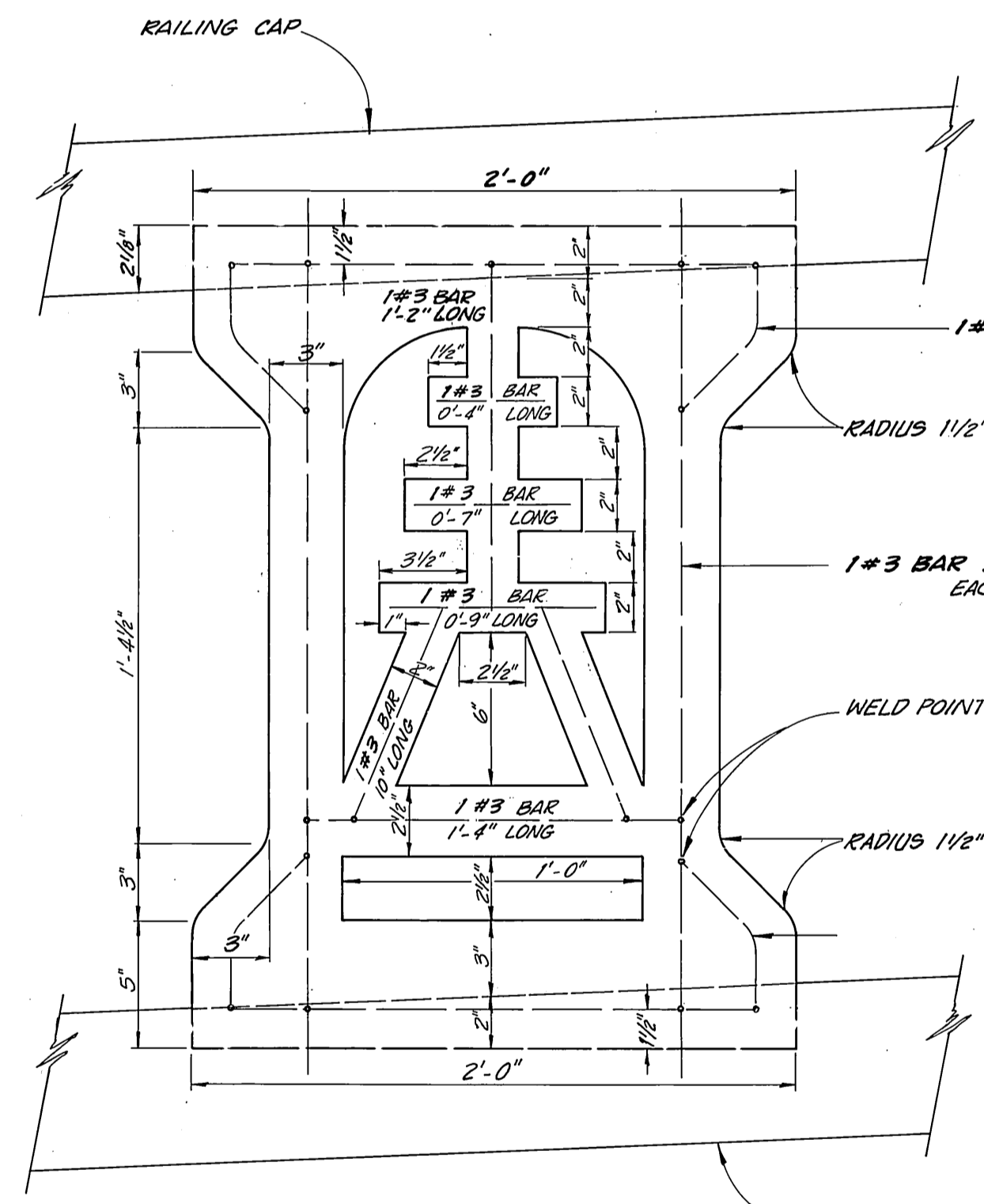
SECTION OF BLANK PANEL

SCALE: 1" = 1'



SECTION OF BLANK PANEL

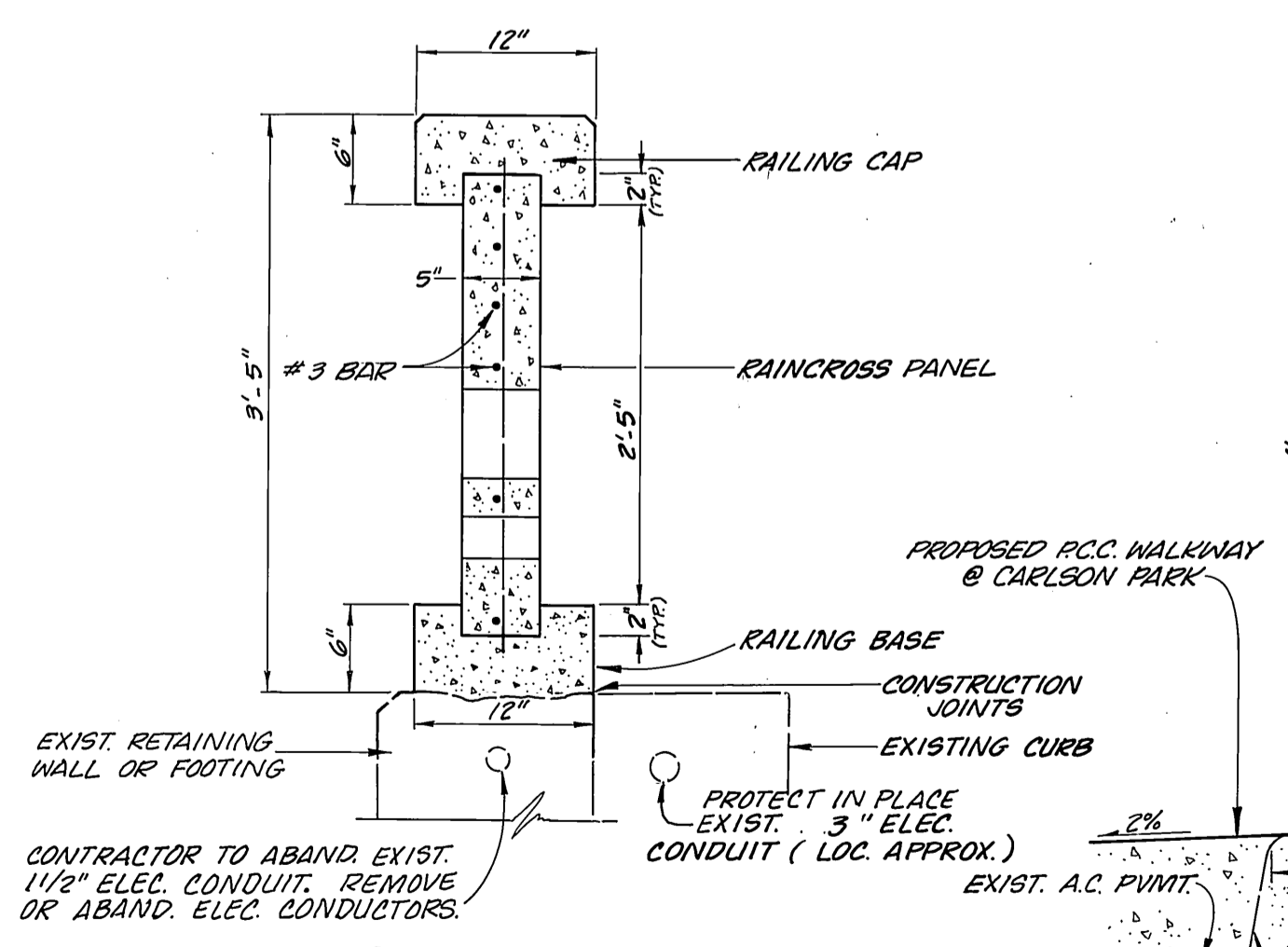
SCALE: 1" = 6"



ELEVATION OF RAINCROSS PANEL

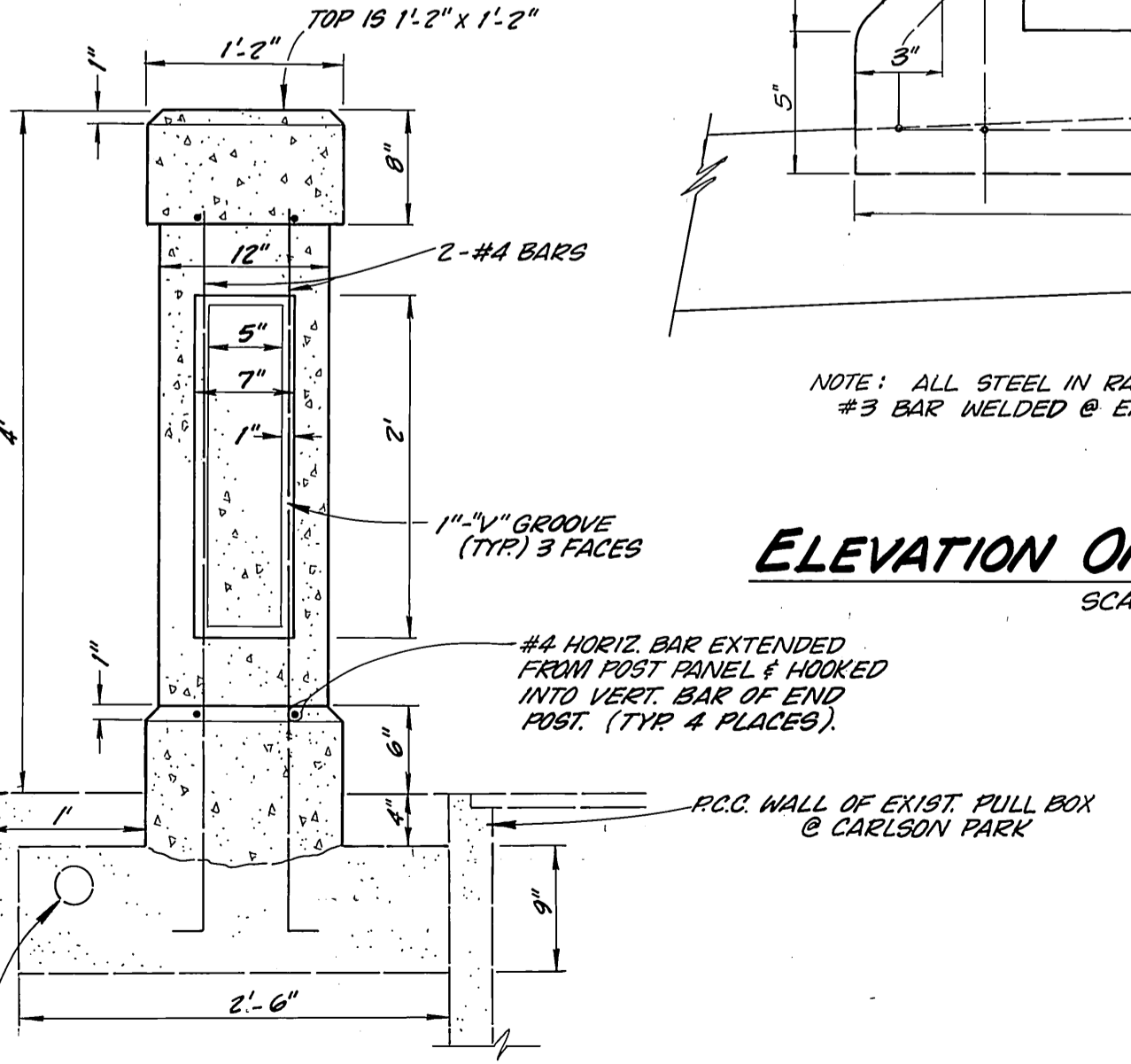
SCALE: 1" = 6"

NOTE: ALL STEEL IN RAINCROSS PANELS TO BE #3 BAR WELDED @ EACH CONTACT POINT



SECTION OF RAINCROSS PANEL

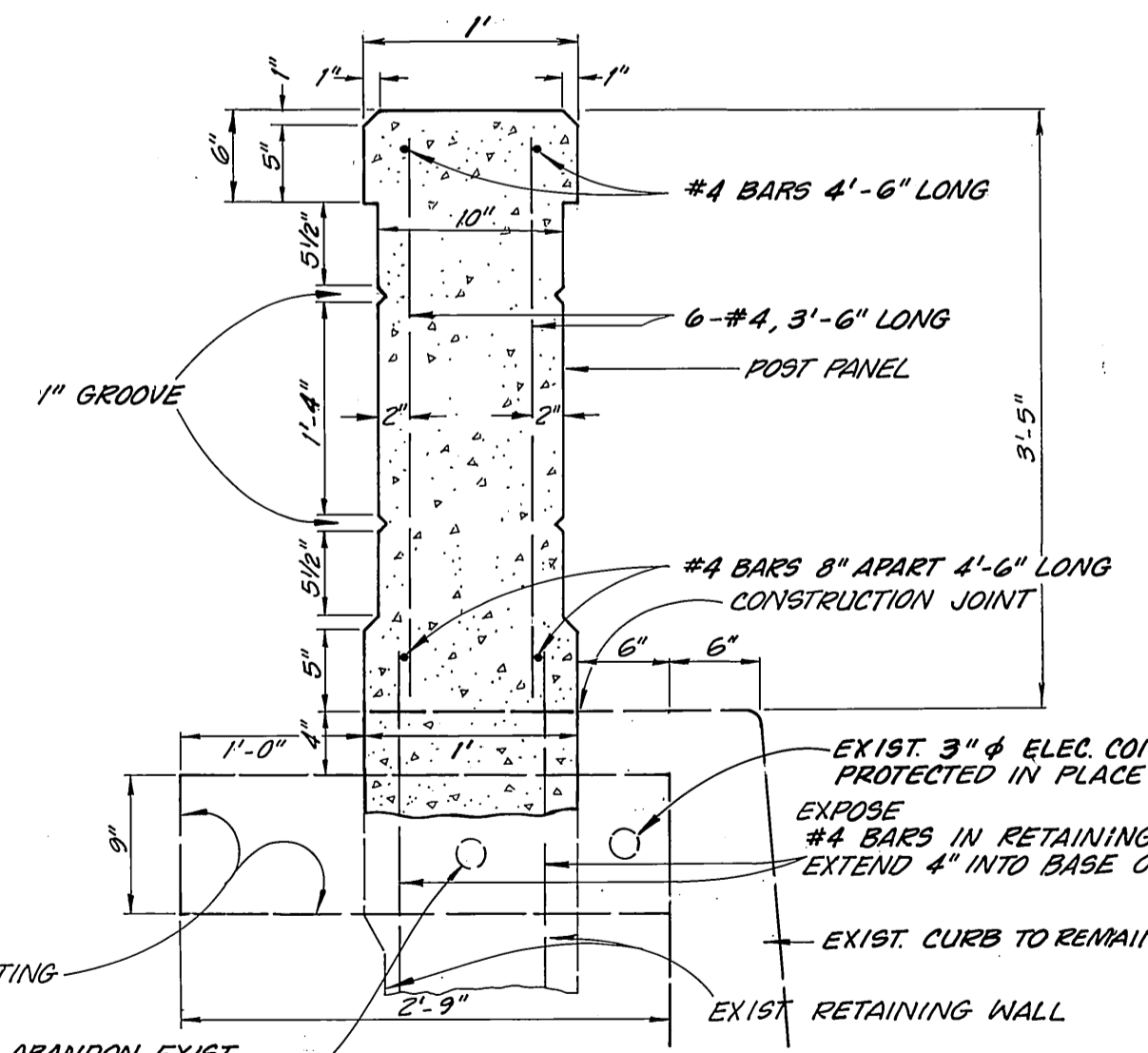
SCALE: 1" = 1'



END POST

SCALE: 1" = 1'

NOTE: PROVIDE 2-#4 BARS 4'± LONG EACH END POST & EMBED 6" INTO EXIST. FOOTING. USE EPOXY TO BOND REIN. BARS TO EXIST. P.C.C. WHERE FOOTING IS NOT EXIST. CONSTRUCT END POST FOOTING AS SHOWN.



SECTION OF POST PANEL

SCALE: 1" = 1'

CONTRACTOR TO ABANDON EXIST. 1 1/2" ELEC. CONDUIT. REMOVE OR ABAND. ELEC. CONDUCTORS.

NOTE: ANY DISCREPANCY IN TOTAL LENGTH OF RAILING BETWEEN POST PANELS WHICH MAY DEVELOP DURING CONSTRUCTION TO BE COMPENSATED FOR IN THE LENGTH OF THE POST PANEL.

<p>CITY OF RIVERSIDE PUBLIC WORKS DEPARTMENT</p>		<p>EMERGENCY JOBS BILL - 1983 BUENA VISTA DRIVE - CARLSON PARK</p>		<p>ACCOUNT NO. 15-551-479 R-2582</p>
<p>APPROVED BY: [Signature] DATE: 6/28/85</p>	<p>DATE: July 16, 1985</p>	<p>APPROVED BY: [Signature] PUBLIC WORKS DIRECTOR</p>		<p>SHEET 2 OF 2</p>
<p>DESIGNED BY: [Signature] DRAWN BY: [Signature] CHECKED BY: [Signature]</p>	<p>REVISIONS: [Table] APPR. DATE: [Table]</p>	<p>TRAFFIC DIVISION CHIEF P.U. ENGINEER</p>		<p>SCALE: 1" = AS SHOWN</p>