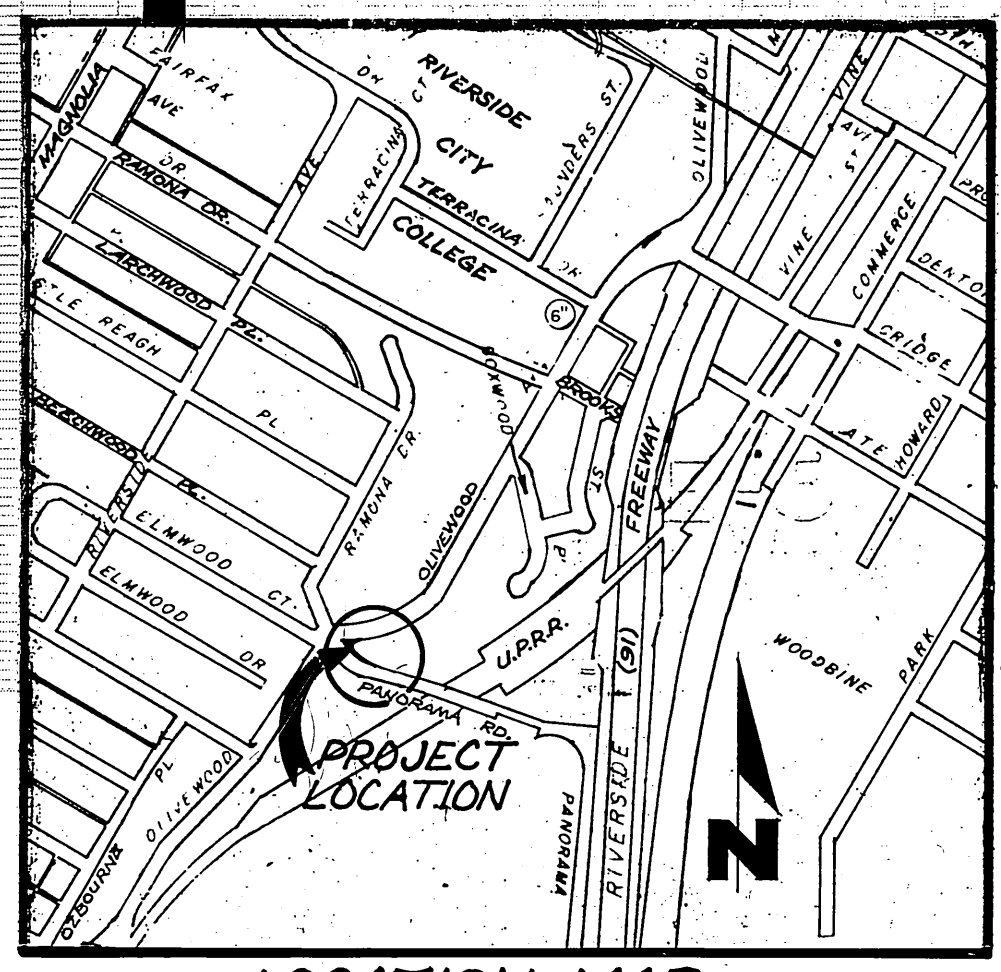


**PROFILE**  
STORM DRAIN  
LATERAL RECONST.



**LOCATION MAP**

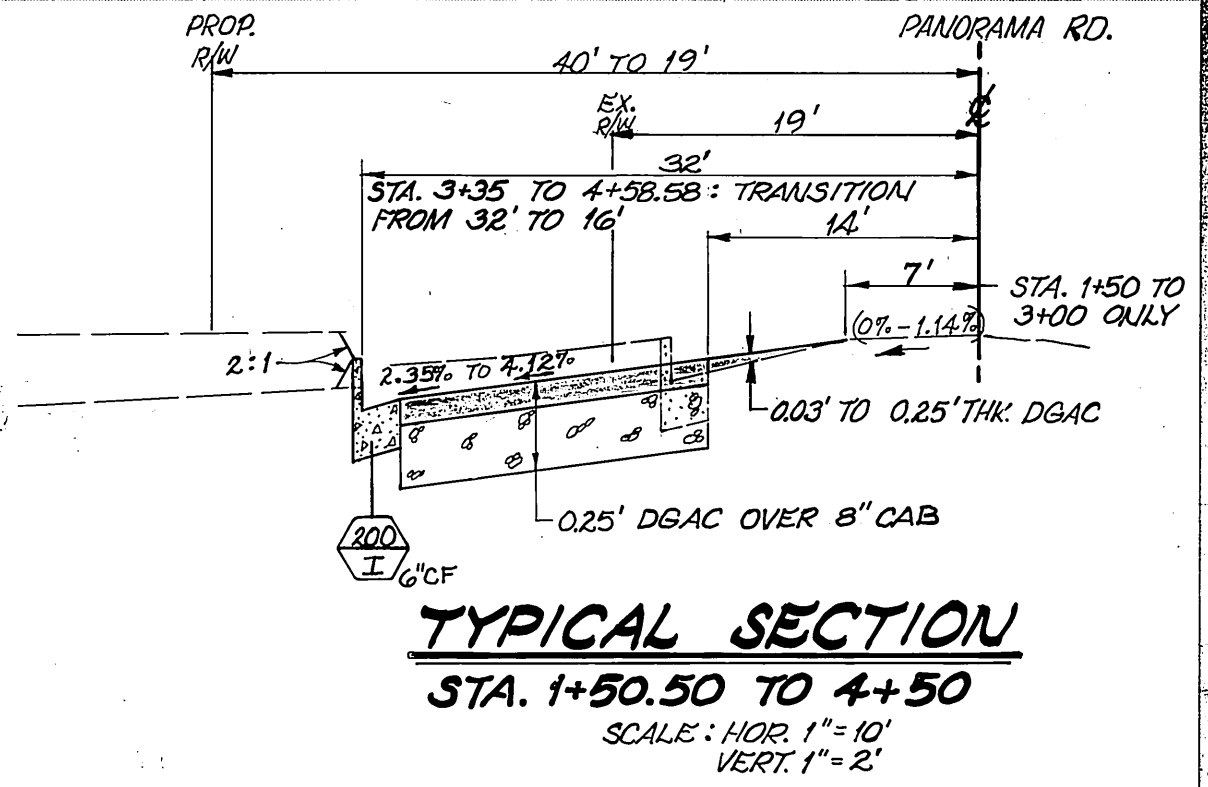
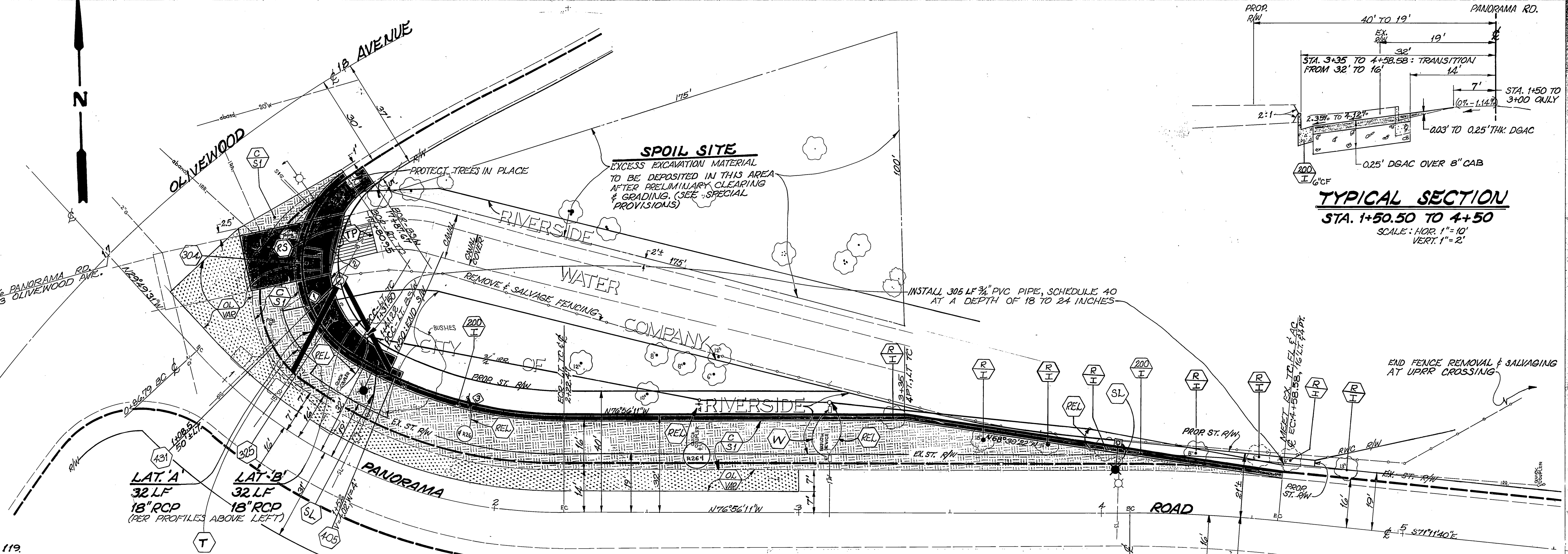
FB - LL 10/62A  
EL - 870.34  
BM - MET. AT STA. 1+00, & PANORAMA RD.

**GENERAL NOTES**

- ALL RELATED LANDSCAPING WORK SHALL CONFORM TO THE CITY OF RIVERSIDE, PARK & RECREATION DEPT. STDS.
- CONTACT THE PARK PROJECTS INSPECTOR A MIN. OF 48 HRS. AT 787-7223 TO SCHEDULE INSPECTIONS. INSPECTIONS ARE REQUIRED:
  - PRIOR TO BEGINNING WORK ON THE IRRIGATION SYSTEM
  - BEFORE FINAL INSPECTION IS INITIATED
- PRIME CONTRACTORS BIDDING THIS WORK SHALL HAVE A CLASS A OR C-10 LICENSE AT TIME OF AWARD.
- EXISTING UTILITIES SHOWN ON THIS PLAN ARE PLOTTED FROM UTILITY RECORDS. THE CONTRACTOR IS REQUIRED TO TAKE DUE PRECAUTIONARY MEASURES TO LOCATE AND PROTECT ALL UTILITIES WHETHER OR NOT SHOWN ON THIS PLAN. IF THE COVER OF A UTILITY IS KNOWN IT IS SHOWN IN THE PROFILE. UTILITIES SHOWN IN THE PROFILE AS ? INDICATES THAT THE COVER IS UNKNOWN, BUT THE UTILITY IS NOT EXPECTED TO CONFLICT WITH THE PROPOSED IMPROVEMENTS.
- ALL ELEVATIONS SHOWN ON THE PLAN SHALL BE STAKED IN THE FIELD.
- THE CONTRACTOR SHALL CALL UNDERGROUND SERVICE ALERT, 1-800-422-4133 IN ORDER TO HAVE THE UNDERGROUND UTILITIES MARKED BY THE RESPECTIVE UTILITY COMPANY, PACIFIC TELEPHONE CO., SOUTHERN CALIFORNIA GAS CO. AND THE CITY OF RIVERSIDE'S ELECTRIC, WATER, & TRAFFIC DIVISIONS ARE MEMBERS OF THIS SERVICE.
- ALL OBJECTIONABLE MATERIAL AND EXISTING IMPROVEMENTS, IN CONFLICT WITH PROP. CONST., SHALL BE REMOVED WITHIN THE IMMEDIATE PROJECT LIMITS.
- THIS PLAN ACCURATE FOR ST. IMPROVEMENTS ONLY. SEE PLAN X-410 FOR TRAFFIC SIGNAL IMPROVEMENTS.

**CONSTRUCTION LEGEND**

- SL RELOCATE ST. LT. TO NEW FOUNDATION. EXTEND EX. HDG. STEEL ST. LT. CONDUIT & REPLACE 2\"/>
- R REMOVE ENTIRE TREE. CLASS IS SHOWN ON PLAN, CLASS I: 6\"/>
- CS CONSTRUCT 3\"/>
- T TEL. POLE & GUY WIRE TO BE RELOCATED BY PAC. BELL TEL. CO. PRIOR TO CONST.
- NUMBERS ABOVE 100 IN A HEXAGON REFER TO THE RESPECTIVE CITY STD. DRAWING AND SHALL BE CONSTRUCTED ACCORDINGLY UNLESS MODIFICATION ARE NOTED ON THE PLAN. A W NUMBER SHOWN BELOW THE CITY STD. DRAWING NUMBER INDICATE A SPECIFIC ALTERNATE TO BE CONSTRUCTED.
- TP TIMBER CANAL COVER PANELS SHALL BE RECONSTRUCTED TO ABUTT CONC. BRIDGE & FASTENED AS SHOWN ON SH. 2. DETAIL & SECTIONS, EXCEPT WHERE CONST. TAKES PLACE, EX. TIMBER CANAL COVER SHALL REMAIN PROTECTED IN PLACE.
- V VARIABLE THICKNESS DGAC OVERLAY (0.03\"/>
- REL RELOCATE EX. EQUIPMENT, SIGNS, ETC. TO CLEAR BACK OF PROP. CFG OR S/W AS SHOWN ON PLAN.
- W WATER SYSTEM FACILITY TO BE RELOCATED BY CITY OF RIV. WATER DIV. PRIOR TO CONST.

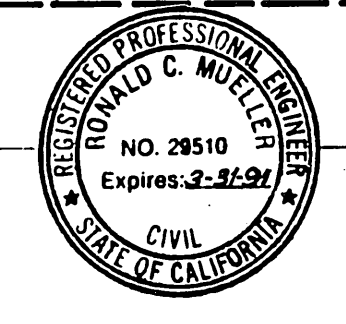


**TYPICAL SECTION**  
STA. 1+50.50 TO 4+50  
SCALE: HOR. 1\"/>

**Underground Service Alert**  
Call: TOLL FREE  
**1-800-422-4133**  
TWO WORKING DAYS BEFORE YOU DIG.

INDEX	R	Δ	T	L
1	35'	114°31'49"	54.45'	69.96'
2	32'	118°48'10"	54.11'	66.35'
3	133'	31°35'21"	37.62'	73.33'

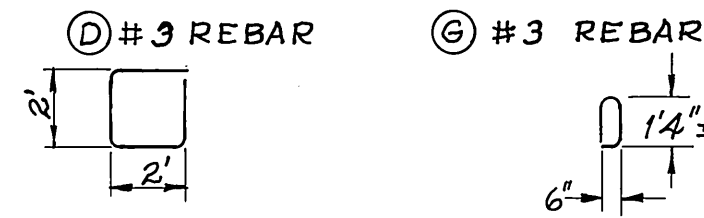
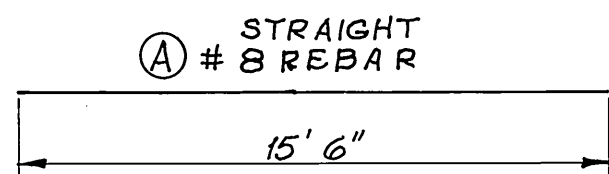
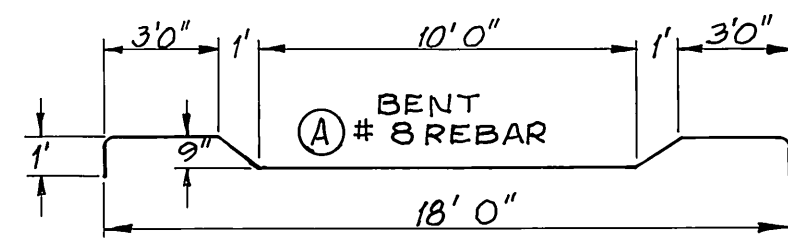
**ENGINEER IN RESPONSIBLE CHARGE**  
Ronald C. Mueller  
RONALD C. MUELLER  
R.C.: 29510 expires 3-31-91  
DATE: 4-17-87



**APPROVED BY**  
W. D. Gardner  
PUBLIC WORKS DIRECTOR  
DATE: 5-8-87

INDEXED 9-21-87 4H  
**NOT BUILT**  
PANORAMA ROAD  
RIGHT TURN IMPROVEMENT  
EAST OF OLIVEWOOD AVENUE R-2587  
SHEET 1 OF 2  
HORIZ. SCALE: 1\"/>



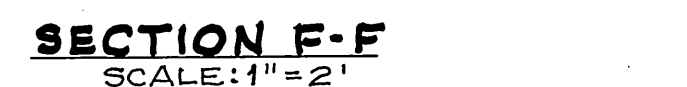
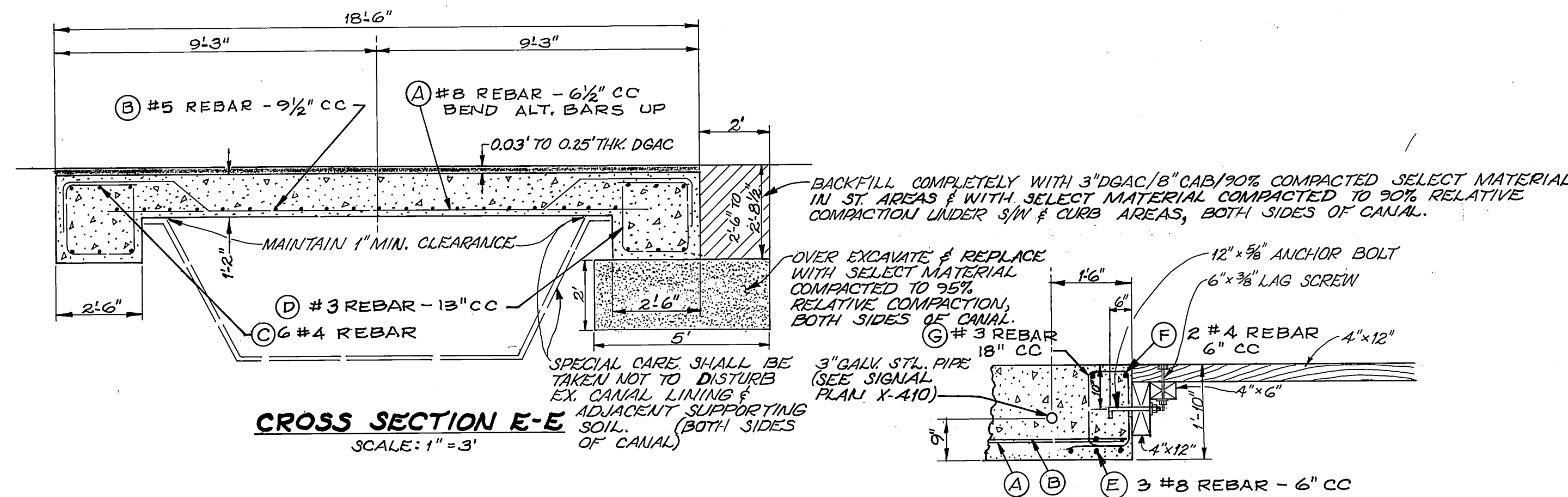
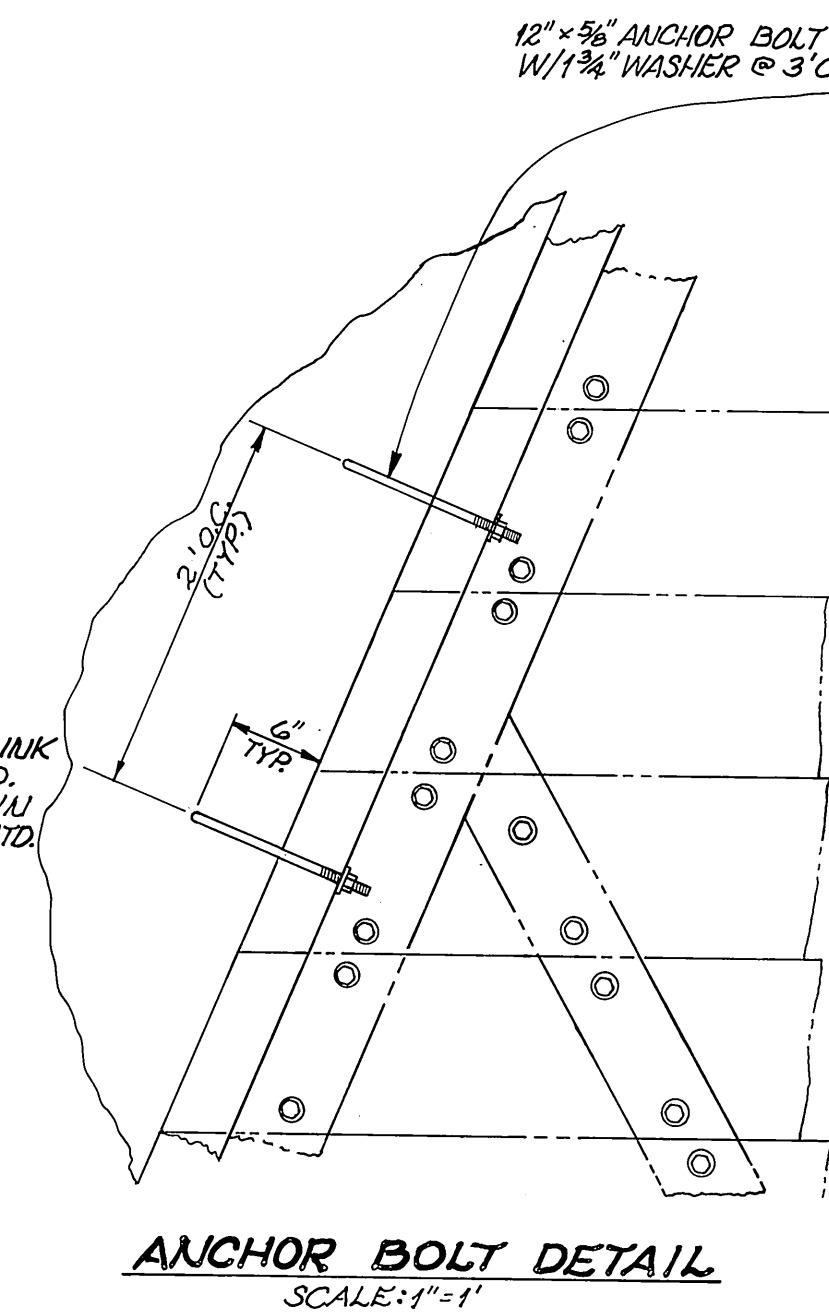
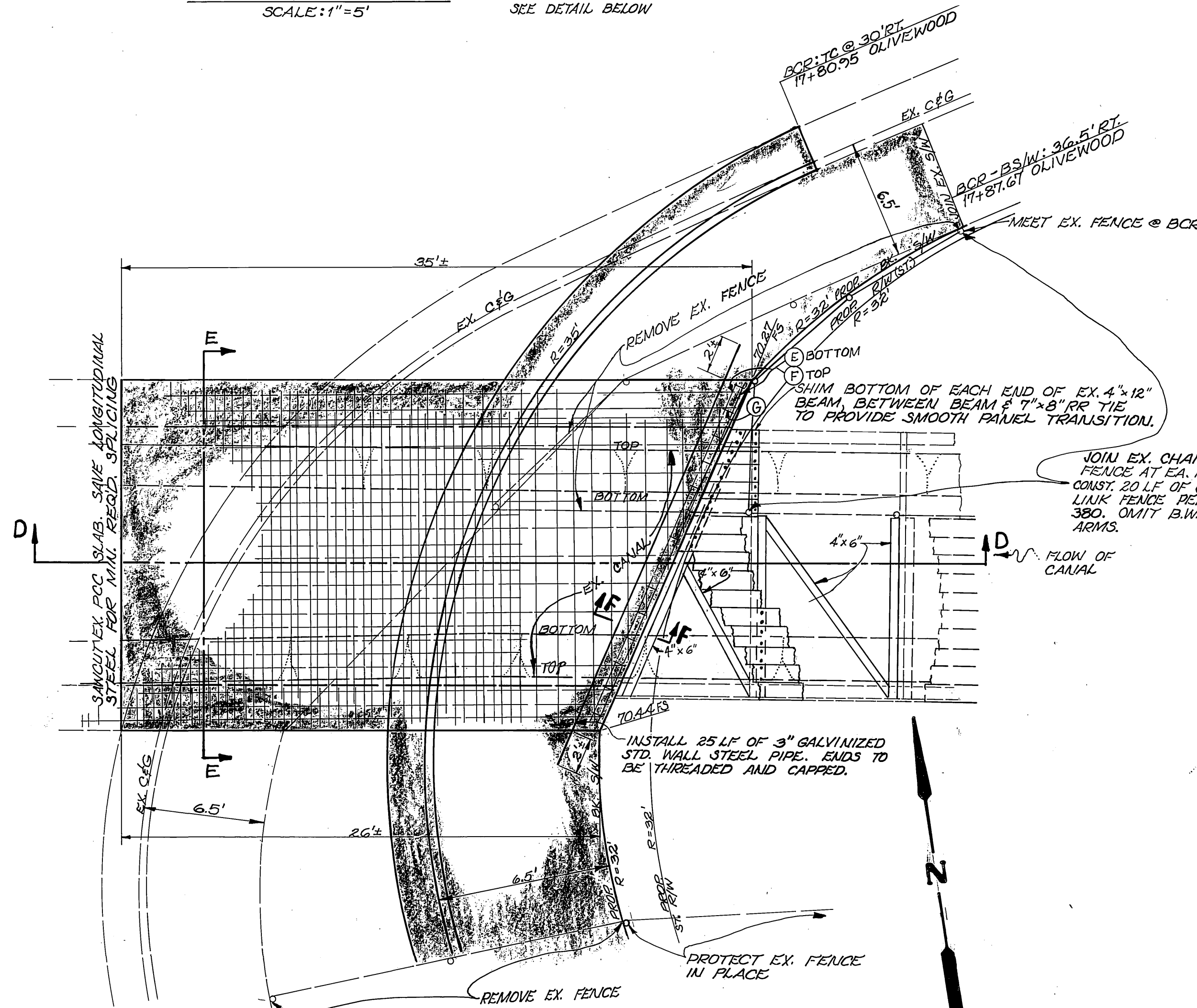
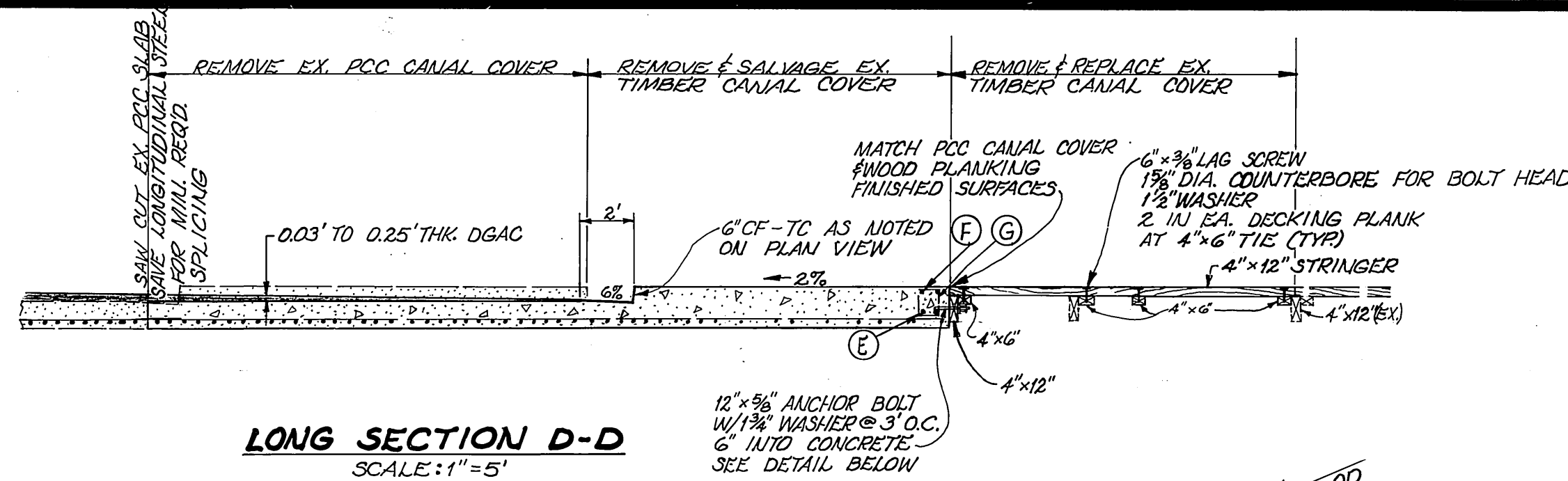


**REBAR SCHEDULE**  
SCALE: 1"=5'

**NOTES:**

1. REBAR SHALL TERMINATE 2" (50mm) FROM CONCRETE SURFACES & EXPANSION JOINTS.
2. REBAR SHALL BE FURNISHED IN FULL LENGTHS SHOWN AS APPROVED BY THE ENGINEER.
3. USE 30 BAR DIAMETER LAPS WHEN SPlicing BARS AS NECESSARY.

$f_y = 40,000 \text{ psi}$   
 $f'_c = 3,250 \text{ psi}$



**NOT BUILT**

INDEXED 9-21-87 LHM

<b>CITY OF RIVERSIDE</b> PUBLIC WORKS DEPARTMENT		<b>PANORAMA ROAD</b> RIGHT TURN IMPROVEMENT EAST OF OLIVEWOOD AVENUE		ACCOUNT NO. 30-575-302-07 <b>R-2587</b>
		APPROVED BY: <i>William D. Gorman</i> PUBLIC WORKS DIRECTOR DATE: 5-8-87		SHEET <b>2</b> OF <b>2</b>
PRINCIPAL ENGINEER: 5-8-87 PARK DEPARTMENT: 5-7-87 TRAFFIC DIVISION: 4-16-87 CHIEF P. W. INSPECTOR: 3/31/87 SURVEYOR: 4/1/87	DESIGNED BY: <i>J.H.</i> DRAWN BY: <i>J.H.</i> CHECKED BY: <i>R.C.M.</i>	APPROVED BY: <i>R.C.M.</i> DATE: 5-8-87		HORIZ. SCALE: AS SHOWN VERT. SCALE: AS SHOWN

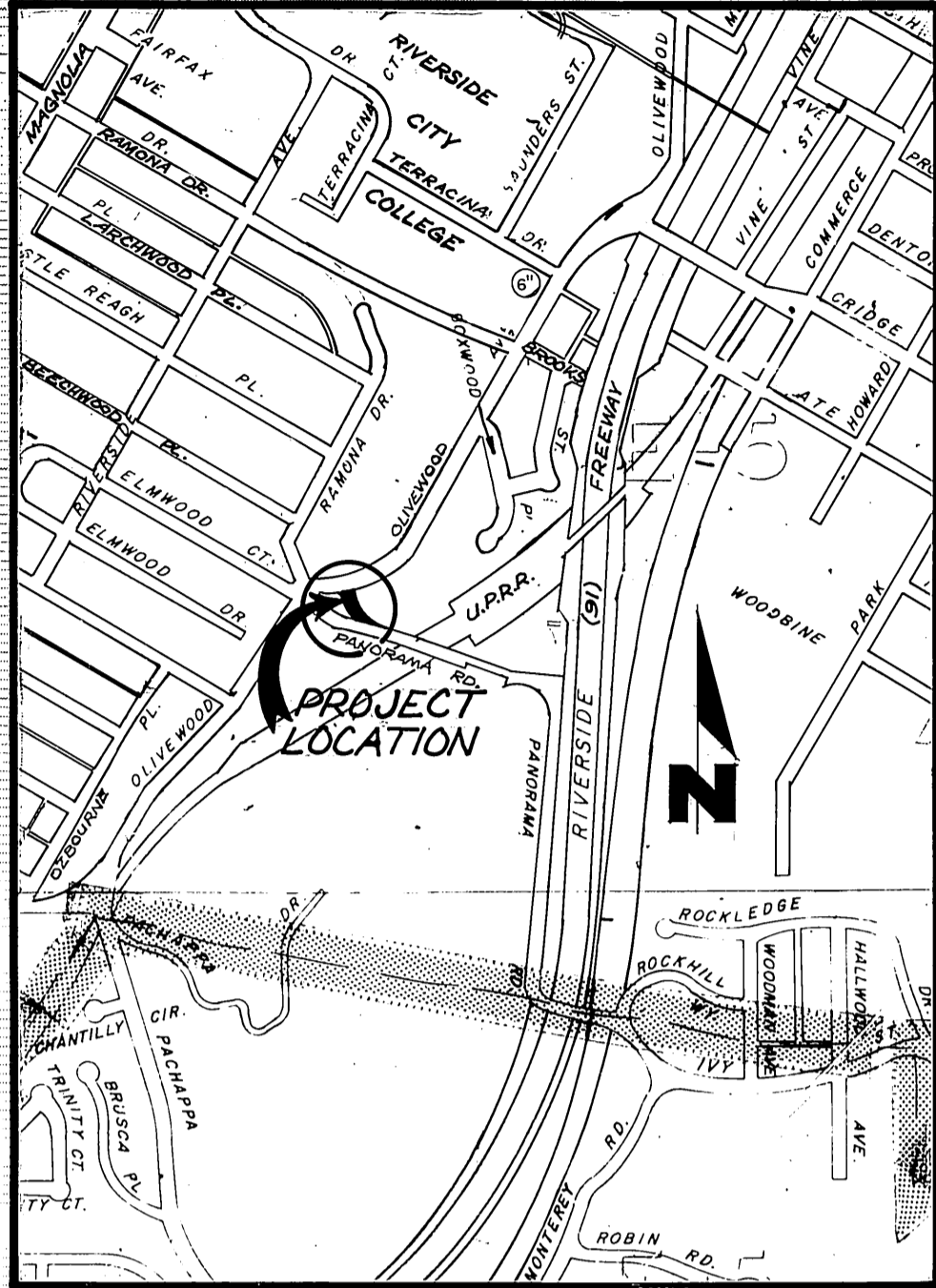




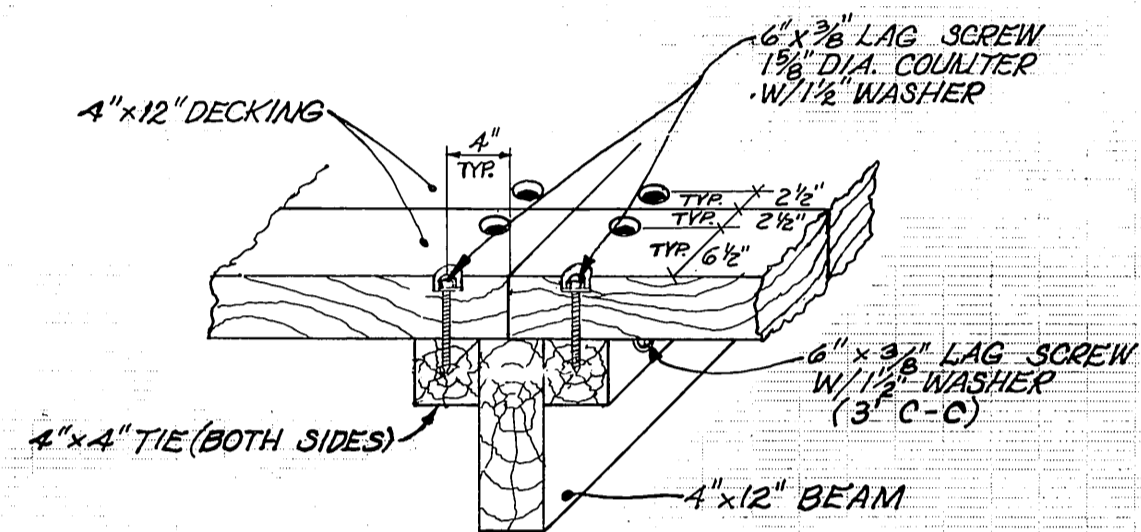




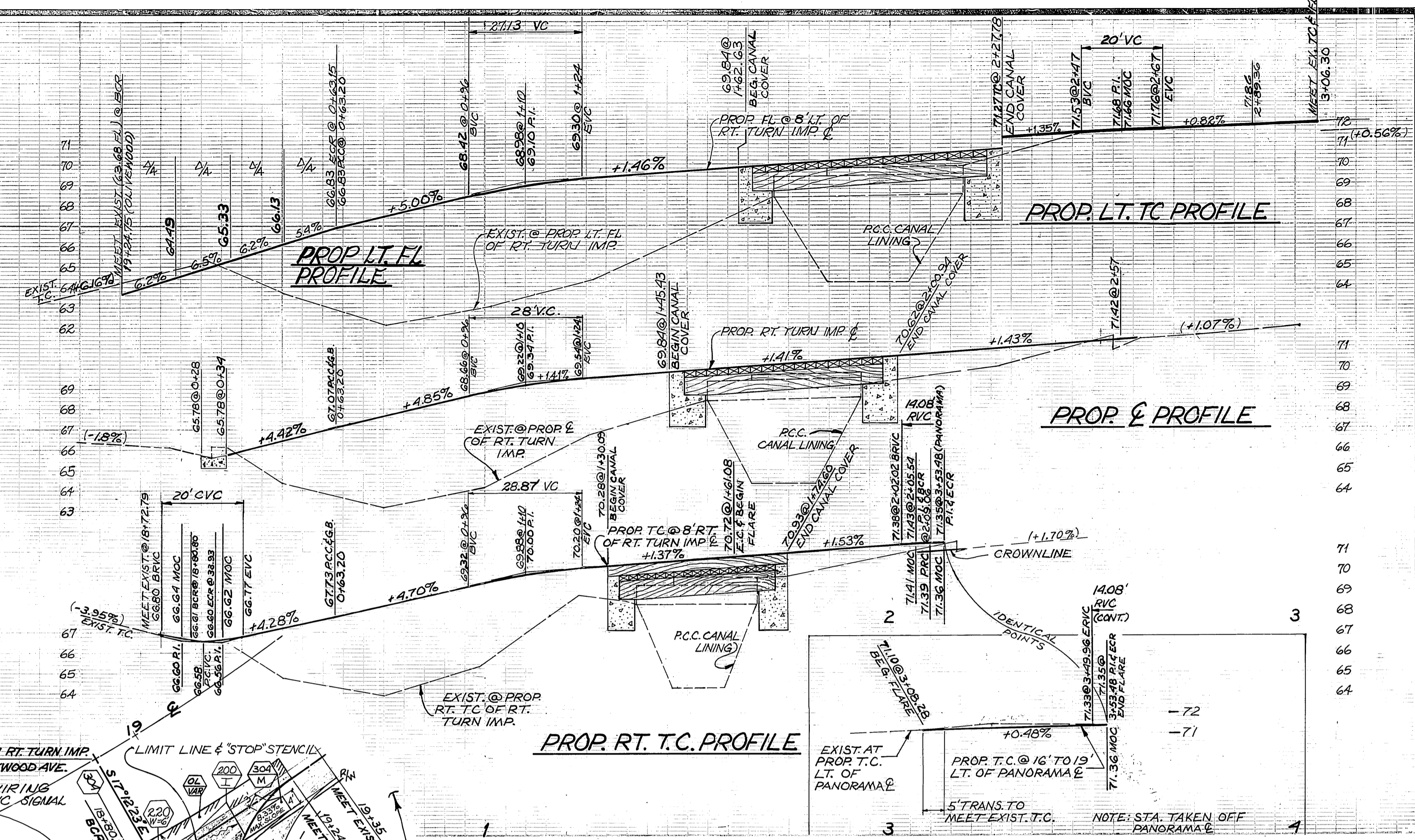
BENCH MARK-RIVERSIDE CO. 602-1-69 C.A.G.S. DISK STAMPED X1142-1961 LOCATED 255' N.E. OF OLIVEWOOD AVE. BRIDGE 55.86 FOR U.P.R.R. AND 8' S.E. LY OF THE S.E. RAIL. ELEV. 861.622  
T.B.M. SET ON E. OF PANORAMA RD. @ 500' S.E. LY OF E. OF OLIVEWOOD AVE. ELEV. 876.144



LOCATION MAP



SECTION H-H  
SCALE: 1" = 1'



- GENERAL NOTES**
- EXISTING UTILITIES SHOWN ON THIS PLAN, ARE PLOTTED FROM UTILITY RECORDS. THE CONTRACTOR IS REQUIRED TO TAKE DUE PRECAUTIONARY MEASURES TO LOCATE AND PROTECT ALL UTILITIES WHETHER OR NOT SHOWN ON THIS PLAN. IF THE COVER OF A UTILITY IS KNOWN IT IS SHOWN IN THE PROFILE. UTILITIES SHOWN IN THE PROFILE AS ? INDICATES THAT THE COVER IS UNKNOWN, BUT THE UTILITY IS NOT EXPECTED TO CONFLICT WITH THE PROPOSED IMPROVEMENTS.
  - ALL ELEVATIONS SHOWN ON THE PLAN SHALL BE STAKED IN THE FIELD.
  - THE CONTRACTOR MAY CALL UNDERGROUND SERVICE ALERT, 1-800-422-4133 IN ORDER TO HAVE THE UNDERGROUND UTILITIES MARKED BY THE RESPECTIVE UTILITY COMPANY, PACIFIC TELEPHONE CO., SOUTHERN CALIFORNIA GAS CO. AND THE CITY OF RIVERSIDE'S ELECTRIC, WATER, & TRAFFIC DIVISIONS ARE MEMBERS OF THIS SERVICE.
  - ALL OBJECTIONABLE MATERIAL AND EXISTING IMPROVEMENTS, SUCH AS TREES, LOGS, UPTURNED ROOTS OF DOWNED TREES, BRUSH, GRASS, WEEDS, FENCES, CONCRETE, MASONRY, ETC., IN CONFLICT WITH PROPOSED CONSTRUCTION, SHALL BE REMOVED WITHIN THE STREET RIGHT OF WAY AND THE PROJECT LIMITS.
  - THE WIDE FACE OF LUMBER EXPOSED TO VIEW SHALL BE FREE OF LOOSE KNOTS AND OPEN HOLES. EXPOSED FACES SHALL BE SURFACED SMOOTH.

- CONSTRUCTION LEGEND**
- (R) REMOVE ENTIRE TREE. CLASS I IS SHOWN ON PLAN, CLASS II: 6" TO 18" DIA. CLASS III: OVER 18" TO 36" DIA. CLASS IV: OVER 36" DIA.
  - (C) CONSTRUCT 3" DGAC OVER 8" CRUSHED AGGREGATE BASE.
  - (RC) CONSTRUCT REINFORCED CONCRETE CANAL COVER PER DETAILS ON SHT. 3
  - (WT) RECONSTRUCT WOOD TIMBER CANAL COVER PER DETAILS ON SHT. 2
  - (N) NUMBERS ABOVE 100 IN A HEXAGON REFER TO THE RESPECTIVE SUPPLEMENTAL DRAWING AND SHALL BE CONSTRUCTED ACCORDINGLY. UNLESS MODIFICATIONS ARE NOTED ON THE PLAN. ANY NUMBER SHOWN BELOW THE SUPPLEMENTAL DRAWING NUMBER INDICATE A SPECIFIC ALTERNATE TO BE CONSTRUCTED.
  - (TP) TIMBER PANELS SHALL BE RECONSTRUCTED TO ABUTT TIMBER BRIDGE.
  - (F) FASTENING GRADE TO ABUTTMENT CONNECTION DETAIL, SHT. 2, EXCEPT WHERE CONST. TAKES PLACE, EXIST. TIMBER CANAL COVER SHALL REMAIN PROTECTED IN PLACE.
  - (SL) FEATHER DGAC AS REQUIRED BY ENGINEER FOR SMOOTH TRANSITION.
  - (SL) INSTALL CONCRETE STREET LIGHT STANDARD 24.3" PER ITEM 52 OF U.S. 800 COMPLETE WITH 150 WATT H.P.S. LUMINAIRE PER ITEM H.3. 150 WATT H.P.S. LAMP PER ITEM HL-3 & PHOTO CONTROL, ALL PER U.S. 800 & SPEC. 119.
  - (SL) INSTALL 1" RIDGID GALV. STEEL CONDUIT COMPLETE WITH 2-#8 CU. 600 VOLT CABLES FOR 240 VOLT OPERATION. ALL PER SPEC. 119.
  - (R) RELOCATE EXISTING IRRIGATION EQUIPMENT TO CLEAR BACK OF PROPOSED SIDEWALK.

NOTE: FOR SIGHT DISTANCE, THE CONTRACTOR SHALL REMOVE ALL SHRUBBERY FROM AN AREA THAT IS 15' FROM BACK OF SIDEWALK ON OLIVEWOOD AVE.

**Underground Service Alert**  
CALL TOLL FREE  
1-800-422-4133  
TWO WORKING DAYS BEFORE YOU DIG

RELOCATE ST. LT. TO NEW FOUNDATION. EXTEND EXISTING H.O.S. STEEL ST. LT. CONDUIT & REPLACE 2-#8 CU. CABLES AS REQUIRED. INSTALL LUMINAIRE ARM PERPENDICULAR TO PANORAMA E. ALL IN ACCORDANCE WITH SEC. 86 OF STD. SPECS. FOR THE STATE OF CALIF. & PART 5 OF THE SPECIAL PROVISIONS OF THIS PROJECT.

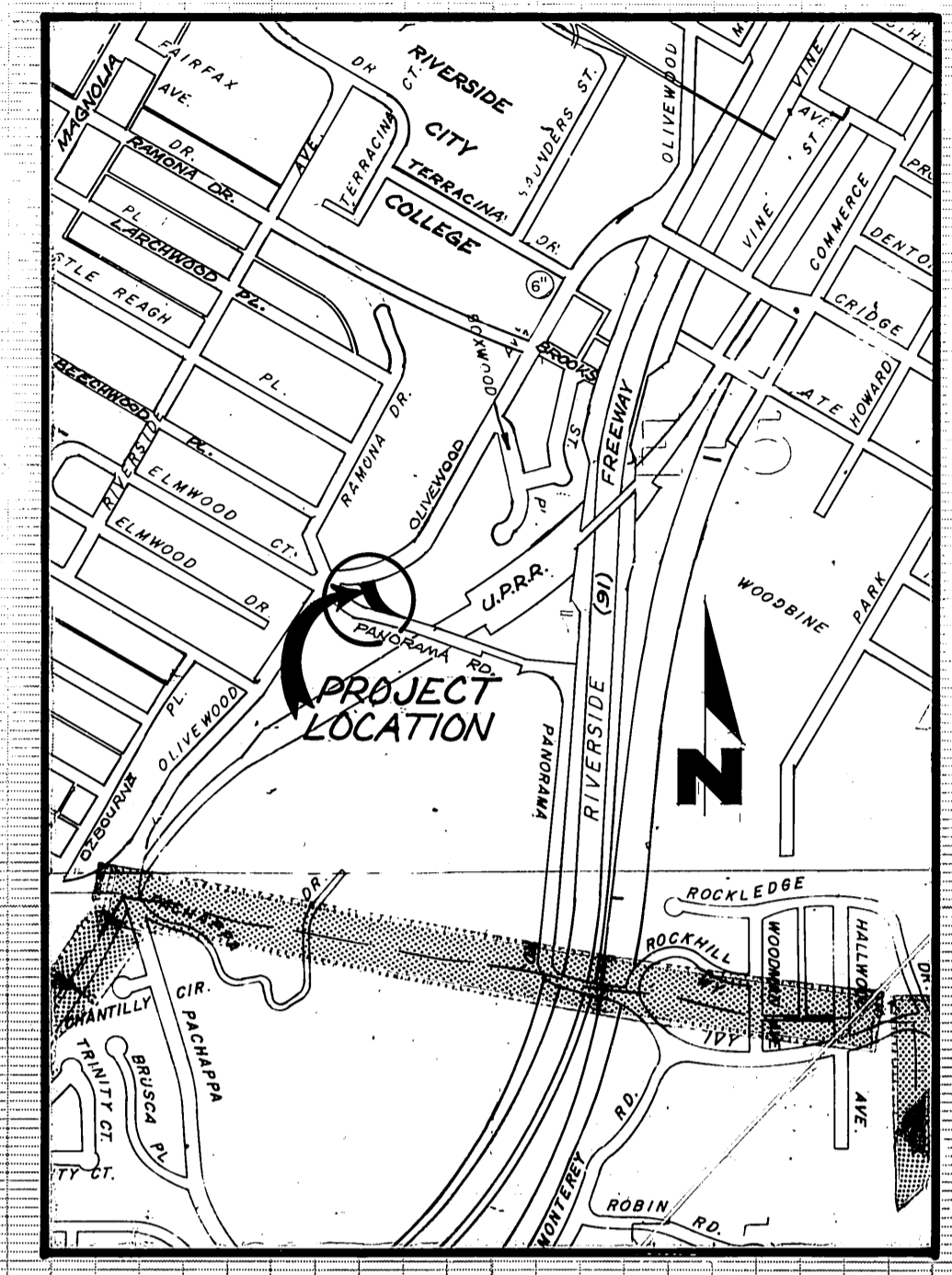
NOT BUILT

CURVE DATA					CURVE DATA				
INDEX	R	Δ	T	L	INDEX	R	Δ	T	L
1	3.00'	106°35'45"	4.02'	5.58'	1	100'	17°01'04"	14.96'	29.70'
2	35.00'	85°19'19"	32.25'	52.12'	2	266'	15°04'36"	35.20'	70.00'
3	250'	53°59'17"	127.35'	235.56'	3	266'	6°39'36"	15.48'	30.92'
4	250'	22°04'52"	48.78'	96.35'	4	266'	21°44'12"	51.07'	100.92'
5	250'	14°29'06"	31.73'	63.13'	5	255'	53°59'17"	131.42'	243.10'
6	250'	17°26'19"	38.34'	76.09'	6	3.00'	134°24'44"	7.14'	7.04'

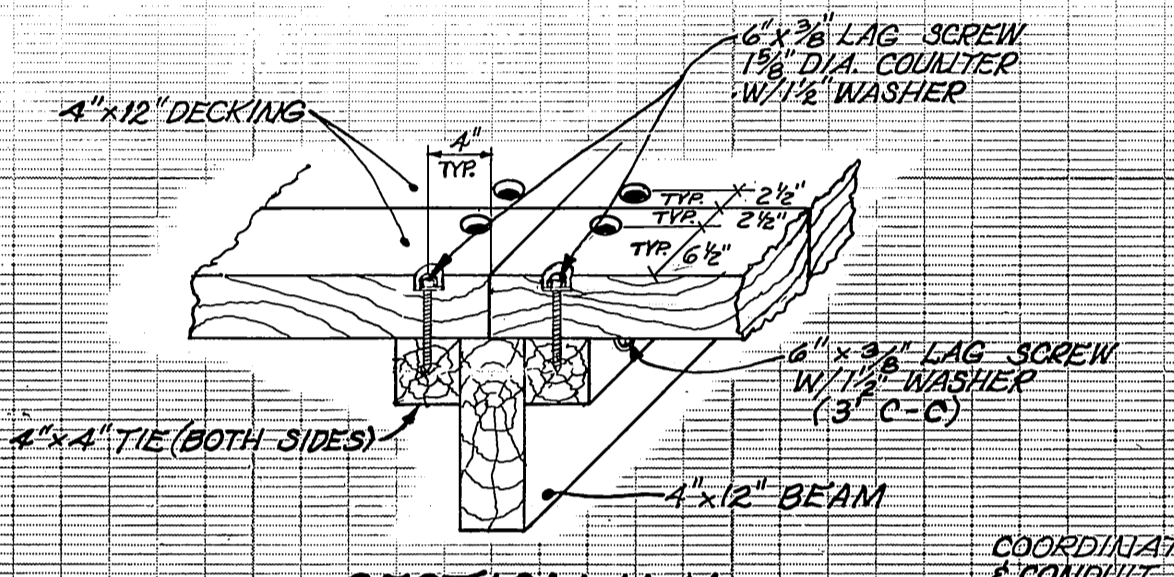
**CITY OF RIVERSIDE PUBLIC WORKS DEPARTMENT**  
PANORAMA ROAD RIGHT TURN IMPROVEMENT EAST OF OLIVEWOOD AVENUE  
ACCOUNT NO. 30-015-202-01  
SHEET 1 OF 2  
INDEXED 7-12-95 GPH



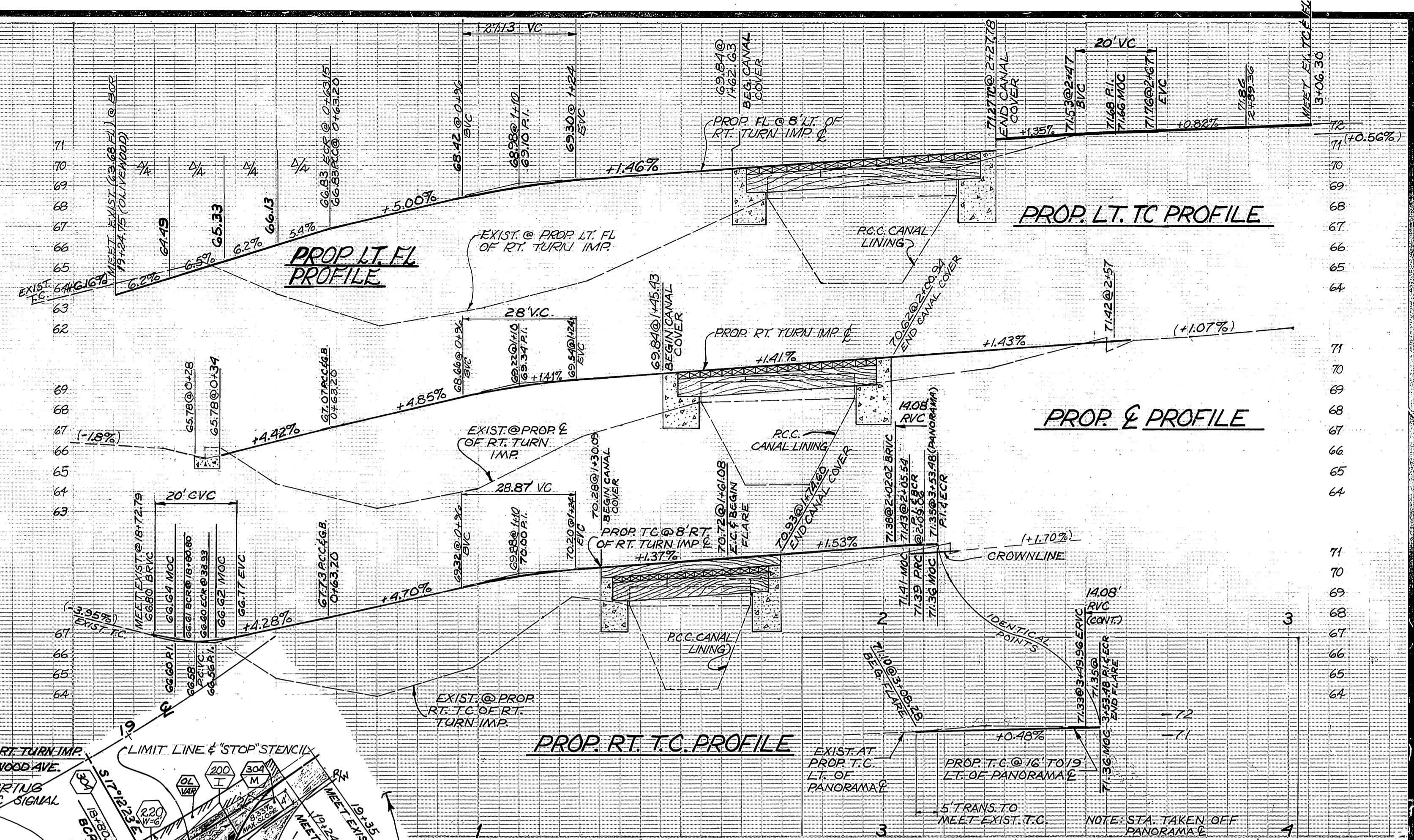
BENCH MARK-RIVERSIDE CO. #602-1-69, C.G.S. DISK, STAMPED X1142-1961, LOCATED 25 S. N. E. OF OLIVEWOOD AVE. BRIDGE 55.86 FOR U.P.R.R. AND 8 S. E. LY OF THE S.E. RAIL. ELEV. 861.622.  
T.B.M.-N4T ON E OF PANORAMA RD. @ 500' S.E. LY OF E OF OLIVEWOOD AVE. ELEV. 872.194.



LOCATION MAP

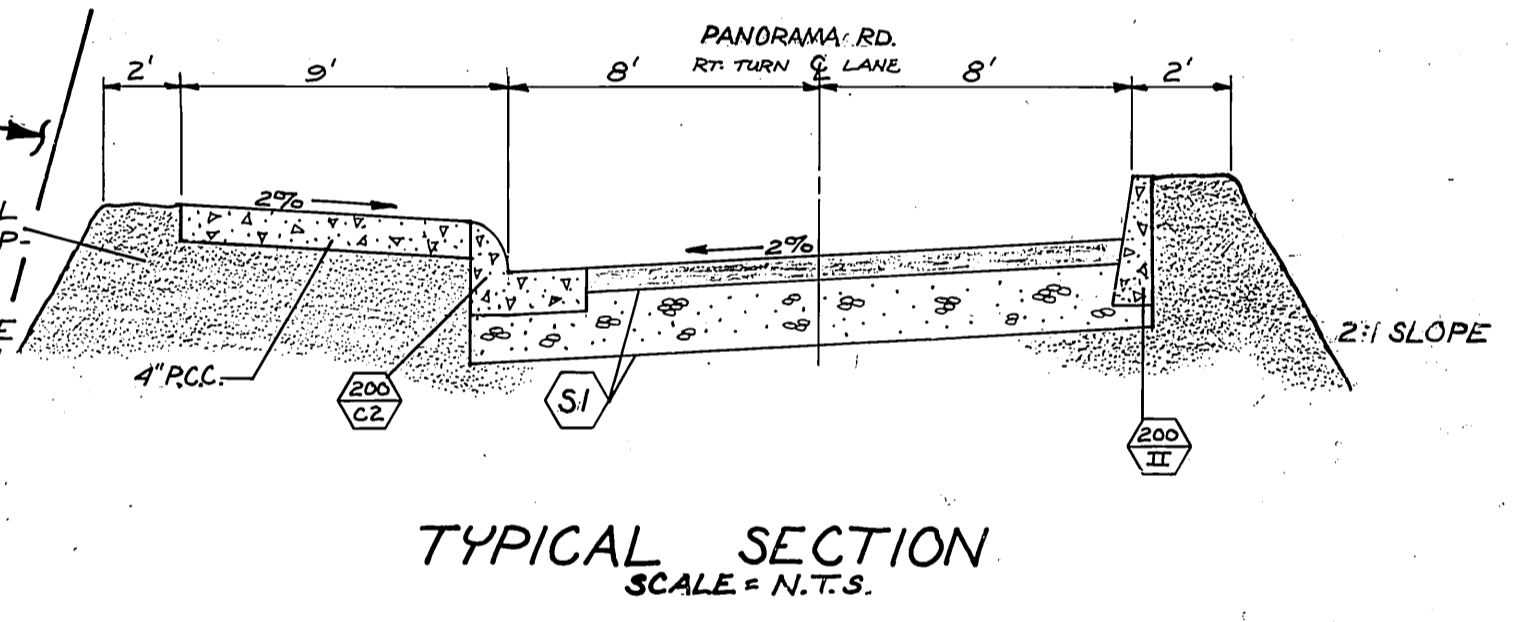
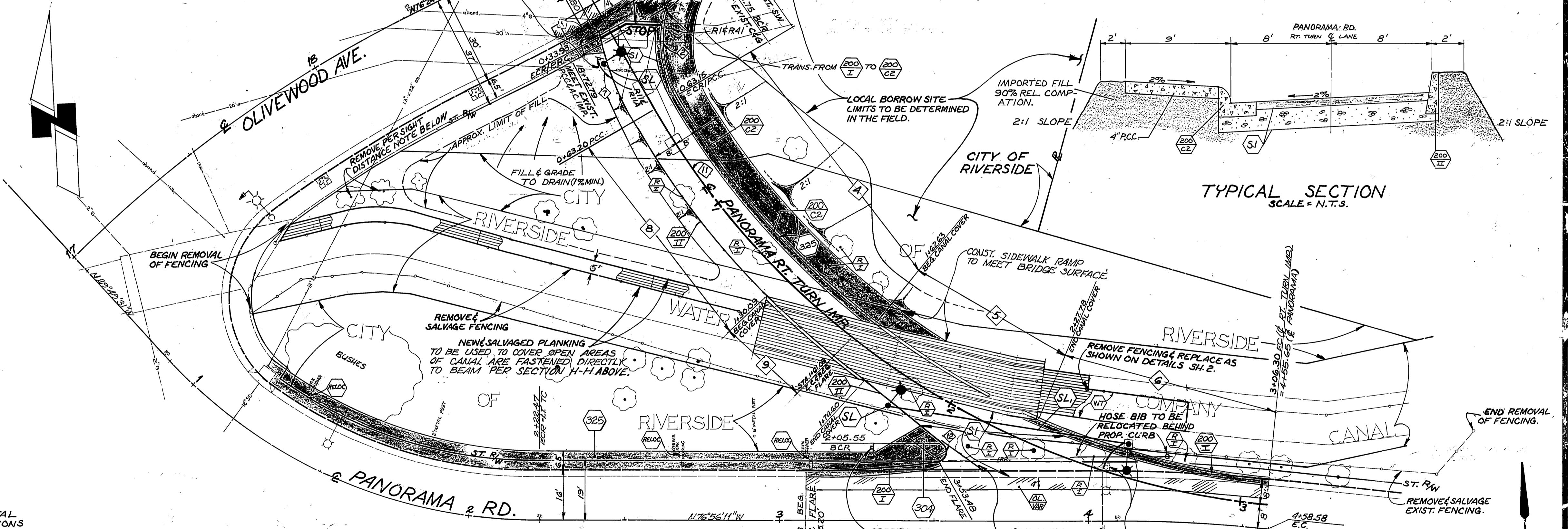


SECTION H-H  
SCALE: 1"=1'



- ### GENERAL NOTES
- EXISTING UTILITIES SHOWN ON THIS PLAN, ARE PLOTTED FROM UTILITY RECORDS. THE CONTRACTOR IS REQUIRED TO TAKE DUE PRECAUTIONARY MEASURES TO LOCATE AND PROTECT ALL UTILITIES WHETHER OR NOT SHOWN ON THIS PLAN. IF THE COVER OF A UTILITY IS KNOWN IT IS SHOWN IN THE PROFILE. UTILITIES SHOWN IN THE PROFILE AS ? ? ? INDICATES THAT THE COVER IS UNKNOWN, BUT THE UTILITY IS NOT EXPECTED TO CONFLICT WITH THE PROPOSED IMPROVEMENTS.
  - ALL ELEVATIONS SHOWN ON THE PLAN SHALL BE STAKED IN THE FIELD.
  - THE CONTRACTOR MAY CALL UNDERGROUND SERVICE ALERT, 1-800-422-4133 IN ORDER TO HAVE THE UNDERGROUND UTILITIES MARKED BY THE RESPECTIVE UTILITY COMPANY, PACIFIC TELEPHONE CO., SOUTHERN CALIFORNIA GAS CO. AND THE CITY OF RIVERSIDE'S ELECTRIC, WATER, & TRAFFIC DIVISIONS ARE MEMBERS OF THIS SERVICE.
  - ALL OBJECTIONABLE MATERIAL AND EXISTING IMPROVEMENTS, SUCH AS TREES, LOGS, UPTURNED ROOTS OF DOWNED TREES, BRUSH, GRASS, WEEDS, FENCES, CONCRETE, MASONRY, ETC., IN CONFLICT WITH PROPOSED CONSTRUCTION, SHALL BE REMOVED WITHIN THE STREET RIGHT OF WAY AND THE PROJECT LIMITS.
  - THE WIDE FACE OF LUMBER EXPOSED TO VIEW SHALL BE FREE OF LOOSE KNOTS AND OPEN HOLES. EXPOSED FACES SHALL BE SURFACED SMOOTH.

- ### CONSTRUCTION LEGEND
- R** REMOVE ENTIRE TREE. CLASS IS SHOWN ON PLAN, CLASS I: 6" TO 18" DIA. CLASS II: OVER 18" TO 36" DIA. CLASS III OVER 36" DIA.
  - SI** CONSTRUCT 3" DGAC OVER 8" CRUSHED AGGREGATE BASE.
  - RC** CONSTRUCT REINFORCED CONCRETE CANAL COVER PER DETAILS ON SHIT 2
  - WT** RECONSTRUCT WOOD TIMBER CANAL COVER PER DETAILS ON SHIT 2
  - N** NUMBERS ABOVE 100 IN A HEXAGON REFER TO THE RESPECTIVE SUPPLEMENTAL DRAWING AND SHALL BE CONSTRUCTED ACCORDINGLY UNLESS MODIFICATIONS ARE NOTED ON THE PLAN. ANY NUMBER SHOWN BELOW THE SUPPLEMENTAL DRAWING NUMBER INDICATE A SPECIFIC ALTERNATE TO BE CONSTRUCTED.
  - TP** TIMBER PANELS SHALL BE RECONSTRUCTED TO ABUTT TIMBER BRIDGE.
  - FA** FASTEN AS SHOWN ON CONNECTION DETAIL SHIT 2 EXCEPT WHERE CONST. TAKES PLACE, EXIST. TIMBER CANAL COVER SHALL REMAIN PROTECTED IN PLACE.
  - DL** FEATHER DGAC AS REQUIRED BY ENGINEER FOR SMOOTH TRANSITION.
  - SL** INSTALL CONCRETE STREET LIGHT STANDARD 24" 3" PER ITEM S2 OF UGS-800 COMPLETE WITH 150 WATT H.P.S. LUMINAIRE PER ITEM H-3, 150 WATT H.P.S. LAMP PER ITEM HL-3 & PHOTO CONTROL, ALL PER UGS-800 & SPEC. 119.
  - SL** INSTALL 1" RIDGID GALV. STEEL CONDUIT COMPLETE WITH 2" #8 CU. 600 VOLT CABLES FOR 240 VOLT OPERATION. ALL PER SPEC. 119.
  - RE** RELOCATE EXISTING IRRIGATION EQUIPMENT TO CLEAR BACK OF PROPOSED SIDEWALK.



TYPICAL SECTION  
SCALE = N.T.S.

**Underground Service Alert**  
Call TOLL-FREE  
**1-800-422-4133**  
TWO WORKING DAYS BEFORE YOU DIG

NOTE: FOR SIGHT DISTANCE, THE CONTRACTOR SHALL REMOVE ALL SHRUBBERY FROM AN AREA THAT IS 15' FROM BACK OF SIDEWALK ON OLIVEWOOD AVE.

CURVE DATA					CURVE DATA				
INDEX	R	Δ	T	L	INDEX	R	Δ	T	L
1	3.00'	106°35'45"	4.02'	5.58'	1	100'	17°01'04"	14.96'	29.70'
2	35.00'	85°19'19"	32.25'	52.12'	2	266'	15°04'38"	35.20'	70.00'
3	250'	53°59'17"	127.35'	235.66'	3	266'	6°39'36"	15.48'	30.92'
4	250'	22°04'52"	48.78'	96.35'	4	258'	21°44'12"	51.07'	100.92'
5	250'	14°28'06"	31.73'	63.13'	5	3.00'	34°24'44"	7.14'	7.04'
6	250'	17°26'19"	38.34'	76.09'					

**CITY OF RIVERSIDE**  
PUBLIC WORKS DEPARTMENT  
PANORAMA ROAD  
RIGHT TURN IMPROVEMENT  
EAST OF OLIVEWOOD AVENUE

APPROVED BY: [Signature]  
PUBLIC WORKS ENGINEER

DATE: 1-12-95

SCALE: HORIZ. SCALE: 1"=20' VERT. SCALE: 1"=2'

INDEXED 1-12-95 4H