

860 LT

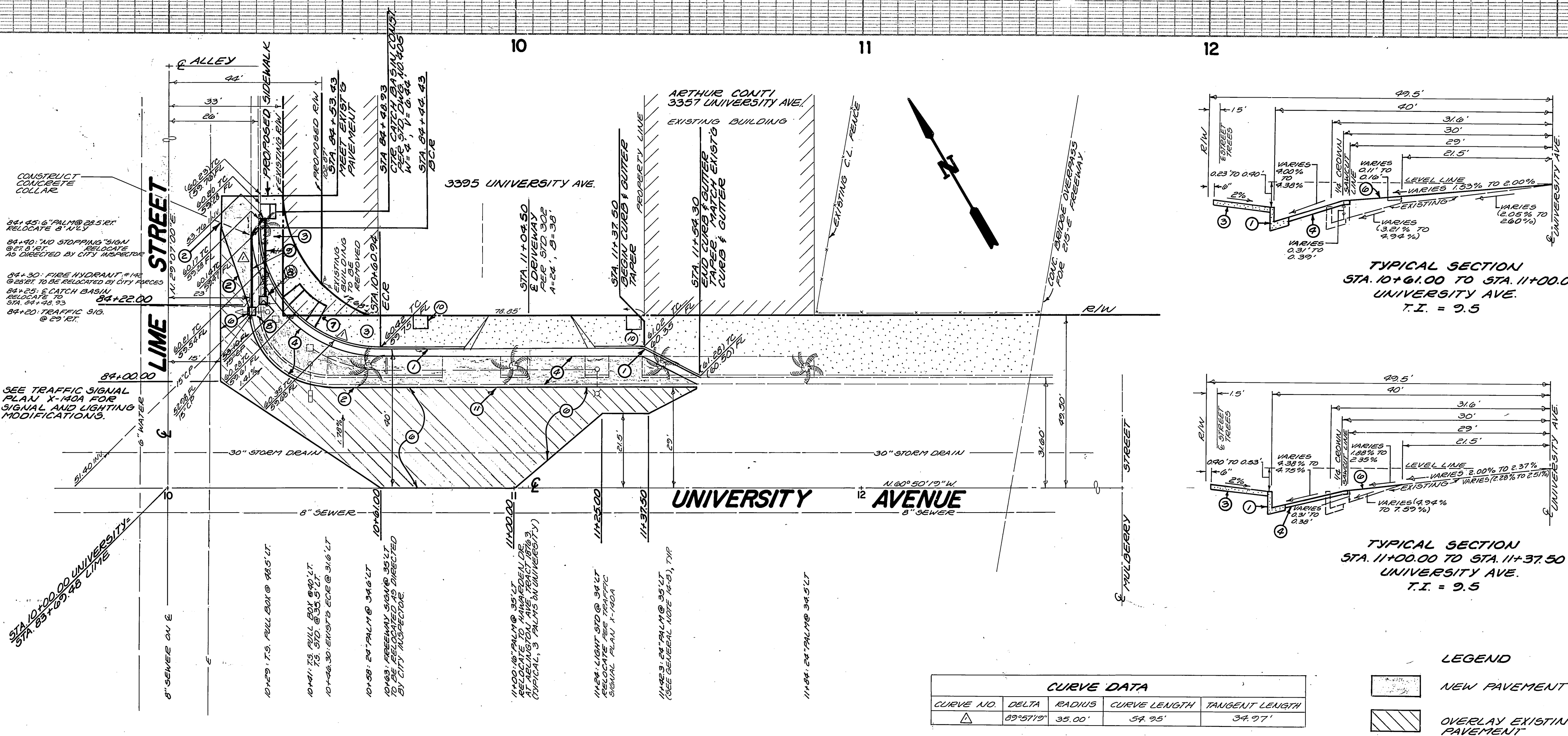
860 LT

860 21.5' LT

860 21.5' LT

860 C

860 C



GENERAL NOTES

- CONSTRUCTION SHALL BE IN ACCORDANCE WITH THE CITY OF RIVERSIDE, DEPARTMENT OF PUBLIC WORKS, STANDARD DRAWINGS, AND THE STANDARD SPECIFICATIONS FOR PUBLIC WORKS CONSTRUCTION, 1982 EDITION.
- IT SHALL BE THE RESPONSIBILITY OF THE CONTRACTOR TO CLEAR THE RIGHT-OF-WAY IN ACCORDANCE WITH THE PROVISIONS OF LAW AS IT AFFECTS EACH UTILITY, INCLUDING IRRIGATION LINES AND APPURTENANCES, AND AT NO COST TO THE CITY.
- THEY SHALL BE RESPONSIBLE FOR OBTAINING ALL NECESSARY PERMITS FROM THE CITY OF RIVERSIDE, CALIFORNIA, AND THE STATE OF CALIFORNIA, PRIOR TO THE START OF CONSTRUCTION.
- CONSTRUCT DRIVEWAY APPROACHES PER STD. DWG. 302, AS SHOWN ON THE PLANS.
- CURB AND GUTTER SHALL BE STAKED WITH 3' OFFSETS AT 25' INTERVALS, 10' INTERVALS IN VERTICAL CURVES.
- QUANTITIES SHOWN ARE FOR INFORMATION ONLY AND THE CITY OF RIVERSIDE IS NOT RESPONSIBLE FOR THEIR ACCURACY.
- ALL FLAGGED ELEVATIONS SHALL BE STAKED IN THE FIELD BY THE PRIVATE ENGINEER.
- THE PRIVATE ENGINEER SHOWING THESE PLANS IS RESPONSIBLE FOR ASSURING THE ACCURACY AND ACCEPTABILITY OF THE WORK HEREON. IN THE EVENT OF DISCREPANCIES ARISING DURING CONSTRUCTION AS A RESULT OF ERRORS OR OMISSIONS, THE PRIVATE ENGINEER SHALL BE RESPONSIBLE FOR DETERMINING AN ACCEPTABLE SOLUTION AND REVISING THE PLAN FOR APPROVAL BY THE CITY.
- THE EXISTENCE AND LOCATION OF UNDERGROUND UTILITIES WERE OBTAINED FROM PUBLIC RECORDS. IT SHALL BE THE RESPONSIBILITY OF THE CONTRACTOR TO LOCATE, MAINTAIN, AND PROTECT ALL UTILITIES DURING CONSTRUCTION. ANY UTILITIES DAMAGED DURING THE PERFORMANCE OF THE WORK SHALL BE REPAIRED OR REPLACED TO THE SATISFACTION OF THE CITY OF RIVERSIDE AT THE CONTRACTOR'S EXPENSE.
- THE CONTRACTOR SHALL CALL IN A LOCATION REQUEST TO UNDERGROUND SERVICE ALERT (USA), TELEPHONE NUMBER 1-800-472-4133, TWO WORKING DAYS BEFORE DIGGING. NO CONSTRUCTION PERMIT ISSUED BY THE PUBLIC WORKS DEPARTMENT INVOLVING EXCAVATION FOR UNDERGROUND FACILITIES WILL BE VALID UNLESS THE APPLICANT HAS BEEN PROVIDED AN INQUIRY IDENTIFICATION NUMBER BY USA.
- ALL RELATED WORK SHALL CONFORM TO THE CITY OF RIVERSIDE, PARK AND RECREATION DEPARTMENT STANDARDS.
- CONTACT THE PARK PROJECTS INSPECTOR A MINIMUM OF 48 HOURS IN ADVANCE AT 714-787-7233 TO SCHEDULE INSPECTIONS. INSPECTIONS SHALL BE REQUIRED: A) WHEN PLANT LOCATIONS HAVE BEEN SHOT IN THE FIELD PRIOR TO DIGGING PLANT PITS, B) WHILE DIGGING PLANT PITS AND PLANTING/RELOCATING TREES, C) AFTER PLANTING AND ALL OTHER INDICATED OR SPECIFIED WORK HAS BEEN COMPLETED FOR START OF MAINTENANCE, AND D) AT END OF MAINTENANCE/FINAL ACCEPTANCE (CONTRACTOR/DEVELOPER WILL BE RELEASED FROM MAINTENANCE ONLY UPON RECEIPT OF WRITTEN NOTIFICATION FROM THE CITY THAT THE PARK AND RECREATION DEPARTMENT IS ASSUMING MAINTENANCE RESPONSIBILITIES).
- THE CONTRACTOR/DEVELOPER SHALL MAINTAIN ALL PLANTINGS FOR A MINIMUM PERIOD OF ONE (1) YEAR.
- STREET TREE PLANTING SHALL BE AS FOLLOWS:

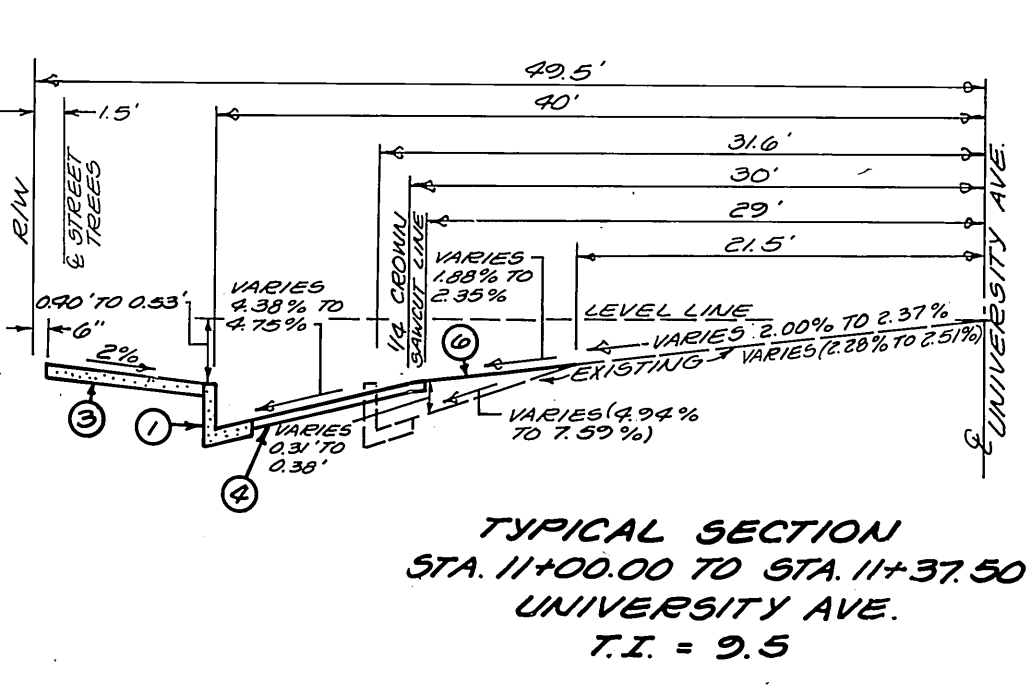
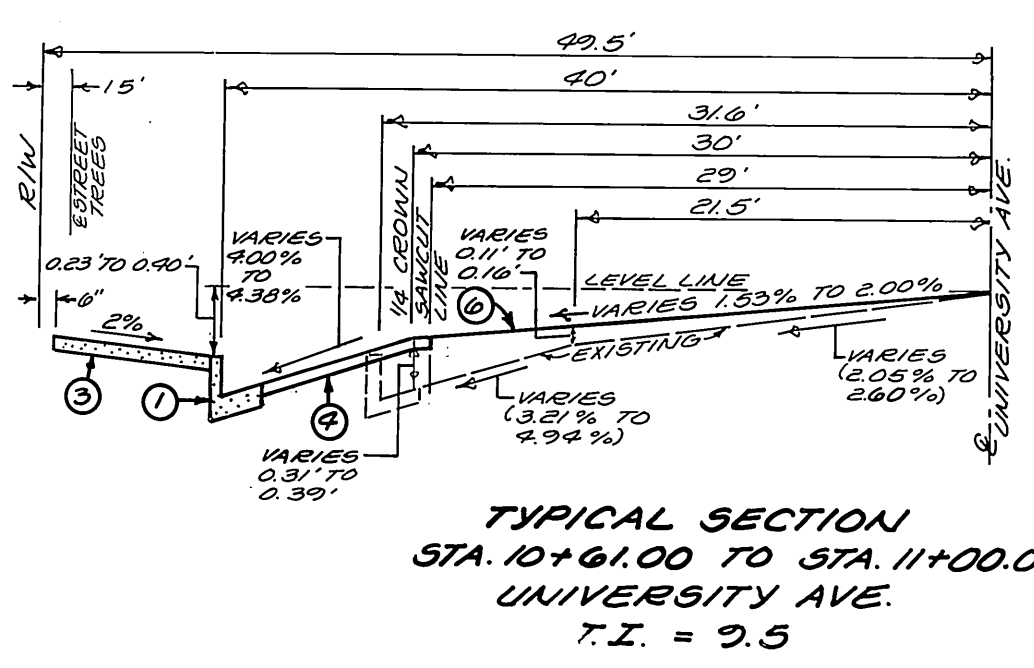
STREET NAME	BOTANICAL NAME/COMMON NAME	MIN. SIZE	APPROX. SPACING	NO. REQ.
A) LIME ST.	WINDHILL PALM - RELOCATE AS SHOWN			
B) UNIVERSITY AVE.	PHOENIX CANARIENSIS PALM TREES - RELOCATE TO HANMARDEN DRIVE AT ALLEGATOR			3
	FICUS MICROCARPA HITTIDA/ IRISHAN LAUREL - PLANT NEW TREES	15 GAL.	50'	2
- A PUBLIC WORKS DEPARTMENT PERMIT IS REQUIRED PRIOR TO COMMENCEMENT OF TREE RELOCATION AND/OR REMOVAL WORK. FOR ALL TREES WITHIN THE ULTIMATE PAVEMENT AREA, BACKFILL OF ALL HOLES IS TO BE INSPECTED BY THE CITY FOR PROPER COMPACTION.
- DEVELOPER TO GIVE CITY WATER DIVISION FIVE (5) WORKING DAYS WRITTEN NOTICE PRIOR TO START OF CONSTRUCTION AND TO ALLOW CITY TEN (10) WORKING DAYS FOR COMPLETION OF WORK (714-787-7611).

LEGEND

- 1. CONSTRUCT 8" CURB AND GUTTER PER CITY OF RIVERSIDE STD. DWG. 300, TYPE I
- 2. SMUCTX EXISTING PAVEMENT TO A SMOOTHER STRAIGHT LINE
- 3. CONSTRUCT CURB SIDEWALK (9'-0" WIDTH) PER CITY OF RIVERSIDE STD. DWG. 325, TYPE V
- 4. CONSTRUCT STRUCTURAL SECTION OF 4" A.C. PAVEMENT OVER 2" OF AGGREGATE BASE PER STD. 41186
- 5. CONSTRUCT DRIVEWAY APPROACH PER CITY OF RIVERSIDE STD. DWG. 302, TYPE IV
- 6. OVERLAY EXISTING AC PAVEMENT WITH VARIABLE THICKNESS A.C. PAVEMENT
- 7. CONSTRUCT WHEELCHAIR RAMP PER CITY OF RIVERSIDE STD. DWG. 304
- 8. CONSTRUCT JUNCTION STRUCTURE PER CITY OF RIVERSIDE STD. DWG. 431
- 9. CONSTRUCT 35" RCP (3000)
- 10. PLANT STREET TREES FOR CITY OF RIVERSIDE PARK AND RECREATION DEPARTMENT STANDARDS. PROVIDE 3" X 4" CUTOUTS IN SIDEWALK. PROVIDE AUTOMATIC IRRIGATION TO ALL STREET TREES.
- 11. CONTRACTOR SHALL REMOVE EXISTING GRANITE CURB AND DELIVER SAID CURB TO RIVERSIDE MUNICIPAL MUSEUM ANNEX BUILDING. CONTACT ALAN COLE AT (714) 787-7233 PRIOR TO DELIVERY.

ESTIMATED QUANTITIES

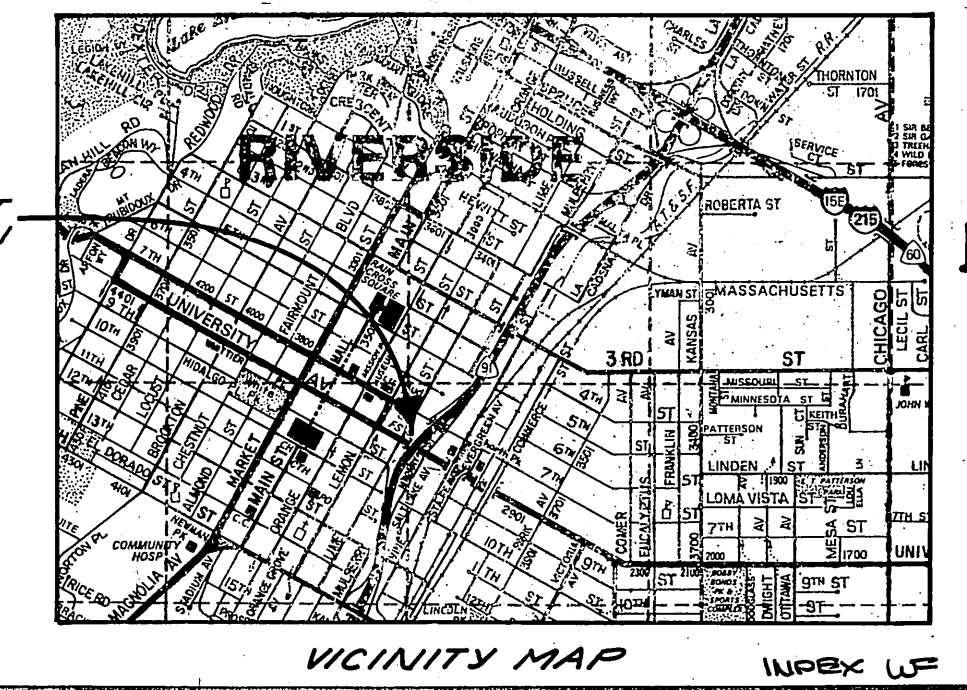
- 180' L.F. REMOVE EXISTING CURB AND GUTTER
- 1,930' S.F. REMOVE EXISTING SIDEWALK AND DRIVEWAY APPROACHES
- 1 EACH WHEELCHAIR RAMP, STD. DWG. 304
- 1 EACH REMOVE EXISTING CATCH BASIN
- 4 EACH REMOVE & RELOCATE EXISTING PALM TREES
- 1 EACH RELOCATE EXISTING STREET LIGHT
- 1 S.F. RELOCATE EXISTING SIGNAL INCLUDING SWITCH BOXES, POLES, AND CONDUIT (SEE DRAWING NO. X-140A)
- 1 S.F. RELOCATE EXISTING FIRE HYDRANT
- 1 S.F. RELOCATE EXISTING SIGNS
- 159' L.F. 8" CURB AND GUTTER, STD. DWG. 300, TYPE I
- 900' S.F. CURB SIDEWALK, STD. DWG. 325, TYPE V
- 340' S.F. DRIVEWAY APPROACH, STD. DWG. 302, TYPE IV
- 2,770' S.F. VARIABLE THICKNESS AC OVERLAY
- 1,420' S.F. 4" AC PAVEMENT OVER 2" OF AGGREGATE BASE
- 270' S.F. REMOVE EXISTING AC PAVING
- 1 S.F. CATCH BASIN PER STD. DWG. 485, 25" L.F. 15" RCP, AND ONE JUNCTION STRUCTURE PER STD. DWG. 431.



CURVE NO.	DELTA	RADIUS	CURVE LENGTH	TANGENT LENGTH
1	39° 57' 19"	35.00'	54.95'	34.97'

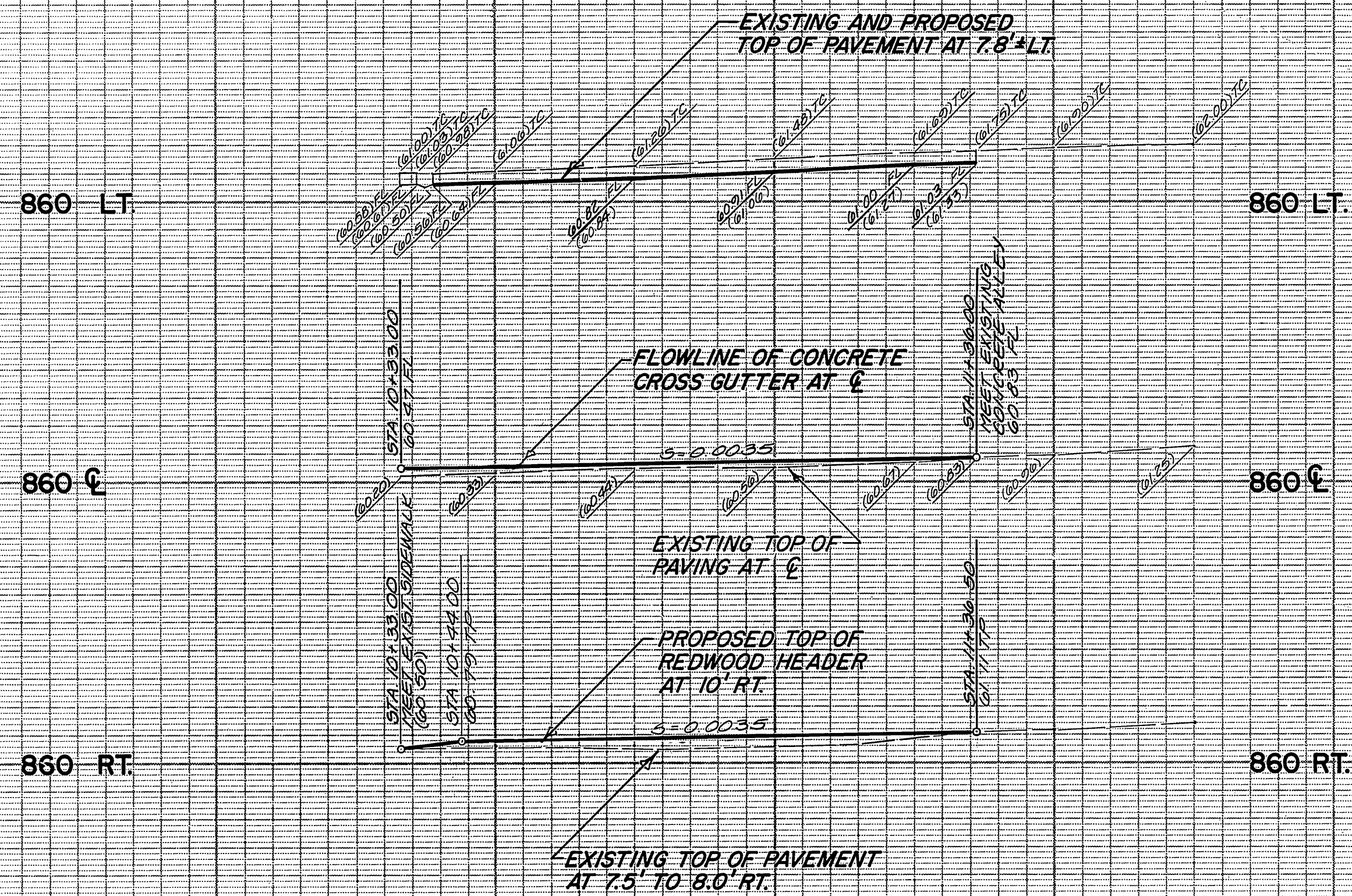
LEGEND

- NEW PAVEMENT
- OVERLAY EXISTING PAVEMENT

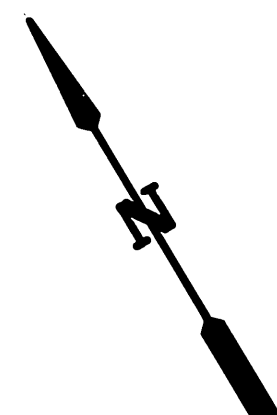
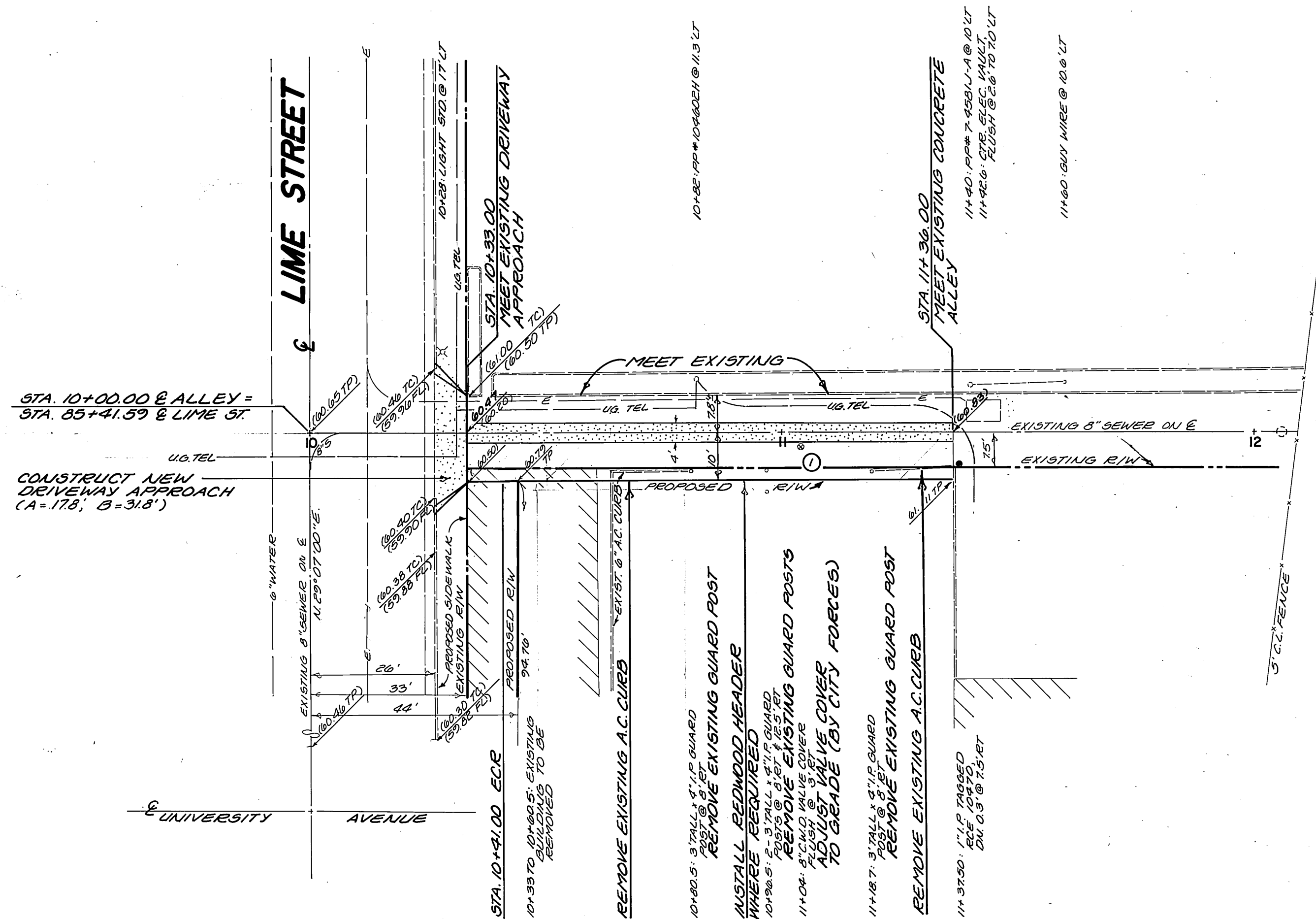


BENCHMARK: CITY OF RIVERSIDE BENCHMARK Z-1-RESET 2" STANDARD USC #2 & BRASS DISK STAMPED "Z-1-1920" SET IN TOP OF GRANITE COLUMN FOUNDATION NEAR THE MUNICIPAL COURSE BUILDING SUBSTATION. ELEV. 851.615 F.B.M. SET CHISELED ON TOP OF CONCRETE CURB (PAVEMENT CURB) AT SE-VY CORNER AT JCT. SIDE OF ALLEY 10 FEET BEHIND FACE OF CURB ON LIME STREET. ELEV. 861.03	SO. CALIF. GAS CO. BY: <i>E. J. Puffer</i> DATE: 4-27-84	PACIFIC TELEPHONE CO. BY: <i>Larry C. Grodzins</i> DATE: 4/27/84	CITY OF RIVERSIDE ELECTRIC DEPARTMENT BY: <i>W. Anderson</i> CHIEF UTILITIES ENGR. - ELECTRIC DATE: 9/22/84	CITY OF RIVERSIDE DOMESTIC WATER SYSTEM BY: <i>W. Anderson</i> CHIEF UTILITIES ENGR. - WATER DATE: 6-21-84	KRIEGER & STEWART ENGINEERING CONSULTANTS 3602 UNIVERSITY AVE., SUITE 201 RIVERSIDE, CALIFORNIA 92501 (714) 684-6900 APPROVED BY: <i>Mark E. Memm</i> RCE # 22020 DATE: 2-10-84	CITY OF RIVERSIDE, CALIFORNIA PUBLIC WORKS DEPARTMENT APPROVED BY: <i>Mark E. Memm</i> PRINCIPAL ENGINEER DATE: 7/6/84 APPROVED BY: <i>Mark E. Memm</i> DIRECTOR OF PUBLIC WORKS DATE: 7/6/84	STREET IMPROVEMENT PLAN NORTHEASTERLY CORNER OF UNIVERSITY AVENUE & LIME STREET BUILDING PERMIT: 3395 UNIVERSITY AVE. SCALE: HORIZ. 1"=20' VERT. 1"=4' ACCOUNT NO. DRAWING NUMBER R - 2603 SHEET 1 OF 5 209-4
	DESIGNED BY: <i>MEH</i> DRAWN BY: <i>JLD</i> CHECKED BY: <i>MEH</i>						

PC - 1446



10 11 12

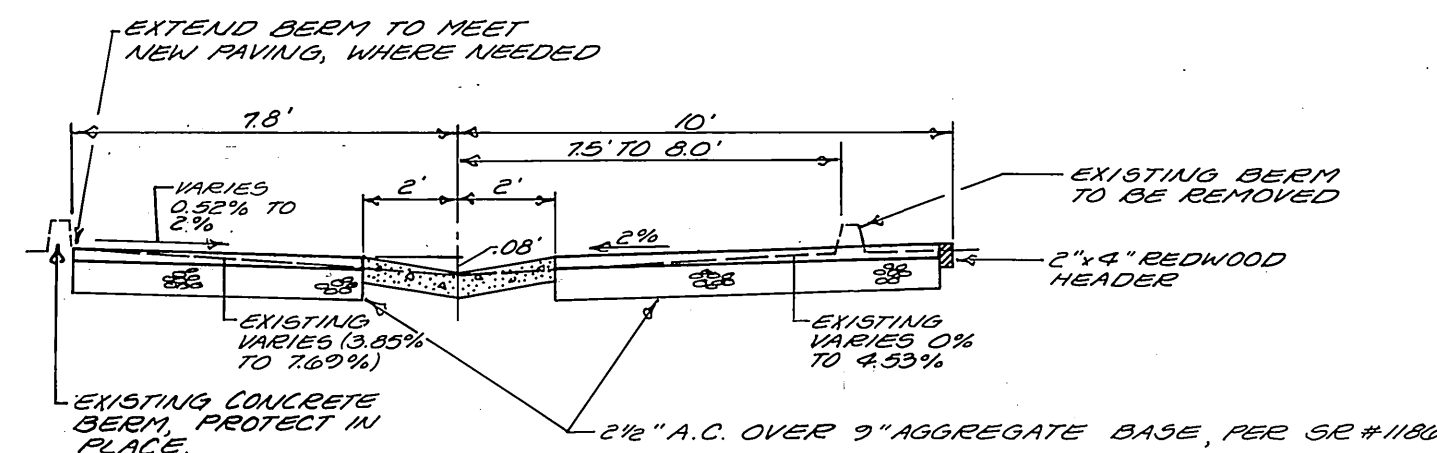


CONSTRUCTION NOTES

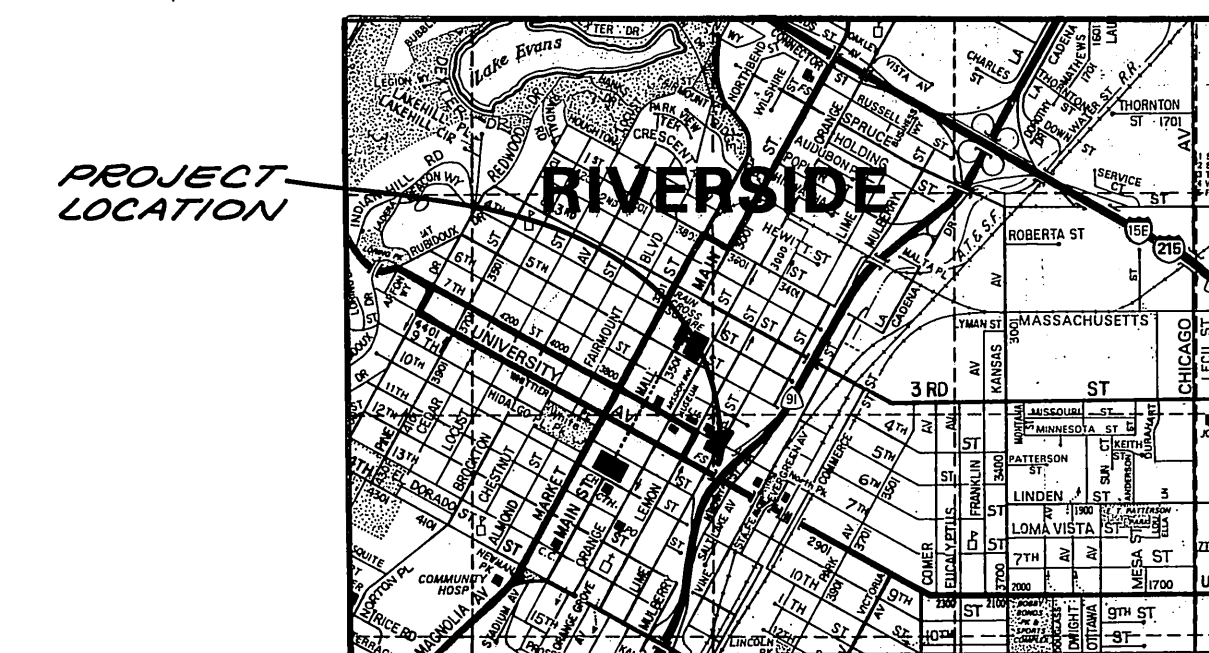
- ① CONSTRUCT ALLEY PER CITY OF RIVERSIDE STD. DWG. 110, TYPE I

QUANTITY ESTIMATE

- 1,850: S.F. REMOVE EXISTING A.C. PAVEMENT
- 1,420: S.F. REMOVE EXISTING A.C. BERMS, DRIVEWAY APPROACH, CURB, GUTTER, AND GUARD POSTS
- 430: S.F. 2.5" A.C. OVER 9" AGGREGATE BASE
- 430: S.F. 6" P.C.C. GUTTER
- 490: L.S. 6" P.C.C. DRIVEWAY APPROACH
- 490: S.F. CURB SIDEWALK, STANDARD DRAWING 325, TYPE V



TYPICAL SECTION
STA 10+33.00 TO 11+36.00
T.I. = 5.0



VICINITY MAP

CITY OF RIVERSIDE ELECTRIC DEPARTMENT BY: <i>[Signature]</i> 6/20 CHIEF ELECTRIC DATE:	PACIFIC TELEPHONE COMPANY BY: <i>[Signature]</i> DATE: 6/21/89	KRIEGER & STEWART ENGINEERING CONSULTANTS 3602 UNIVERSITY AVE., SUITE 201 RIVERSIDE, CALIFORNIA 92501 (714) 684-6900 APPROVED BY: <i>[Signature]</i> RCE # 22020 DATE: 2-10-84	CITY OF RIVERSIDE, CALIFORNIA PUBLIC WORKS DEPARTMENT		STREET IMPROVEMENT PLAN ALLEY OFF OF LIME STREET 172' NORTHERLY OF UNIVERSITY AVENUE BUILDING PERMIT: 3395 UNIVERSITY AVENUE SCALE: HORIZ: 1"=20' VERT: 1"=4'	ACCOUNT No. DRAWING NUMBER R - 2603 SHEET e OF e 209-4
			APPROVED BY: <i>[Signature]</i> PRINCIPAL ENGINEER TRAFFIC DIVISION CHIEF PUB. WKS. ENGR.	BY: <i>[Signature]</i> 7/6/89 DATE: 7/6/89 APPROVED BY: <i>[Signature]</i> DIRECTOR OF PUBLIC WORKS		