

QUANTITIES FOR BLAINE STREET			
ITEM	QUANTITY	ITEM	QUANTITY
*OPEN GRADED A.C.	501 TONS	TRAFFIC SIGNAL LOOPS	2
DENSE GRADED A.C.	1153	REMOVE TRAFFIC SIGNAL PADS	-
ASPHALT RUBBER SAT	10,765 SY	BLUE FIRE HYDRANT MARKERS	2 EA.
A.C. P.V.M.T. GRINDING, TYPE I	3,320 L.F.		
EXCAVATION, A.C. & BASE	285 CY		
D/W APPROACH PER STD. 302 IV	-		
ADJUST SWR & S.D. M.H. FRAME & COVER TO GRADE	5 EA.	PAVEMENT PREPARATION	
ADJUST WATER GATE VALVE COVER TO GRADE	-	AC REMOVAL	76 CY
		AC REPLACEMENT (OGAC)	153 TONS

(SEE PLAN) -  
 ESTIMATED. ACTUAL P.V.M.T. R.F.R. TO BE DETERMINED BY INSPECTOR AT TIME OF CONST.  
 NOTE: STREET WIDTH DIMENSIONS ARE TO C.F. UNLESS OTHERWISE NOTED.

**CITY OF RIVERSIDE**  
 PUBLIC WORKS DEPARTMENT

APPROVED BY: *[Signature]*  
 PRINCIPAL ENGINEER  
 PARK DEPARTMENT

APPROVED BY: *[Signature]*  
 PUBLIC WORKS DIRECTOR

TRAFFIC DIVISION: *[Signature]*  
 CHIEF P.W. INSPECTOR

DESIGNED BY: *[Signature]* DRAWN BY: *[Signature]* CHECKED BY: *[Signature]*  
 SURVEYOR: J.W.S. 7218 DATE: \_\_\_\_\_

REHABILITATION OF MAJOR CITY STREETS - 1986

**BLAINE STREET**  
 CANYON CREST TO A.T. & P.F.R.R.

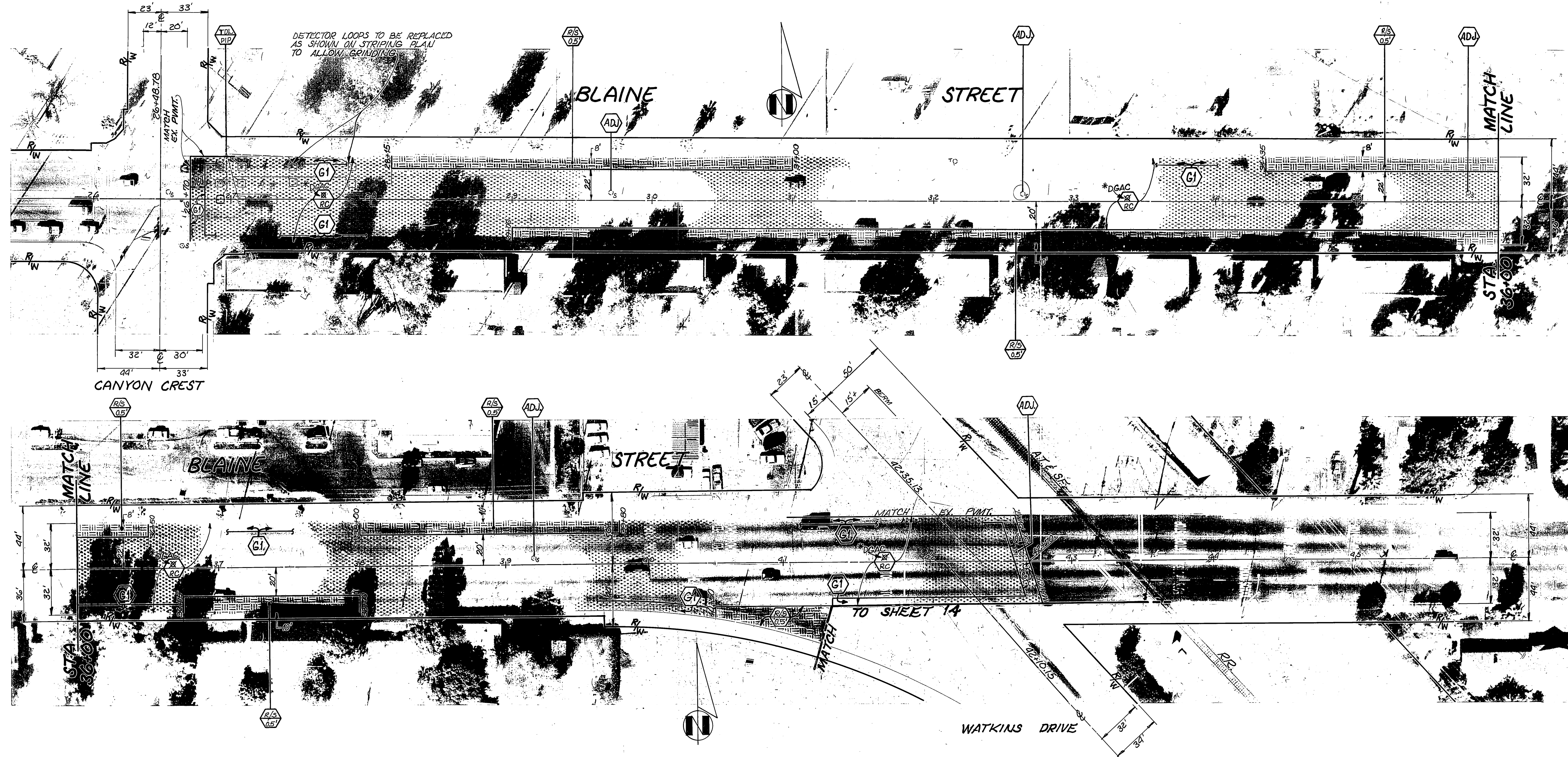
HORIZ. SCALE: 1" = 40' VERT. SCALE: 1" = 4'

INDEXED BY CD.  
 ACCOUNT NO. 30-575-360-09

**R-2748**

SHEET 2 OF 17

FILE NO. \_\_\_\_\_



QUANTITIES FOR BLAINE STREET			
ITEM	QUANTITY	ITEM	QUANTITY
*OPEN GRADED A.C.	501 TONS	TRAFFIC SIGNAL LOOPS	2
DENSE GRADED A.C.	1153	REMOVE TRAFFIC SIGNAL PADS	-
ASPHALT RUBBER SAT	10,765 SY	BLUE FIRE HYDRANT MARKERS	2 EA.
A.C. P.V.M.T. GRINDING, TYPE I	3,320 L.F.		
EXCAVATION, A.C. & BASE	285 CY		
D/W APPROACH PER STD. 302 IV	-		
ADJUST SWR & S.D. M.H. FRAME & COVER TO GRADE	5 EA.	PAVEMENT PREPARATION	
ADJUST WATER GATE VALVE COVER TO GRADE	-	AC REMOVAL	76 CY
		AC REPLACEMENT (OGAC)	153 TONS

(SEE PLAN) -  
 ESTIMATED. ACTUAL P.V.M.T. R.F.R. TO BE DETERMINED BY INSPECTOR AT TIME OF CONST.  
 NOTE: STREET WIDTH DIMENSIONS ARE TO C.F. UNLESS OTHERWISE NOTED.

**CITY OF RIVERSIDE**  
 PUBLIC WORKS DEPARTMENT

APPROVED BY: *[Signature]*  
 PRINCIPAL ENGINEER  
 PARK DEPARTMENT

APPROVED BY: *[Signature]*  
 PUBLIC WORKS DIRECTOR

TRAFFIC DIVISION: *[Signature]*  
 CHIEF P.W. INSPECTOR

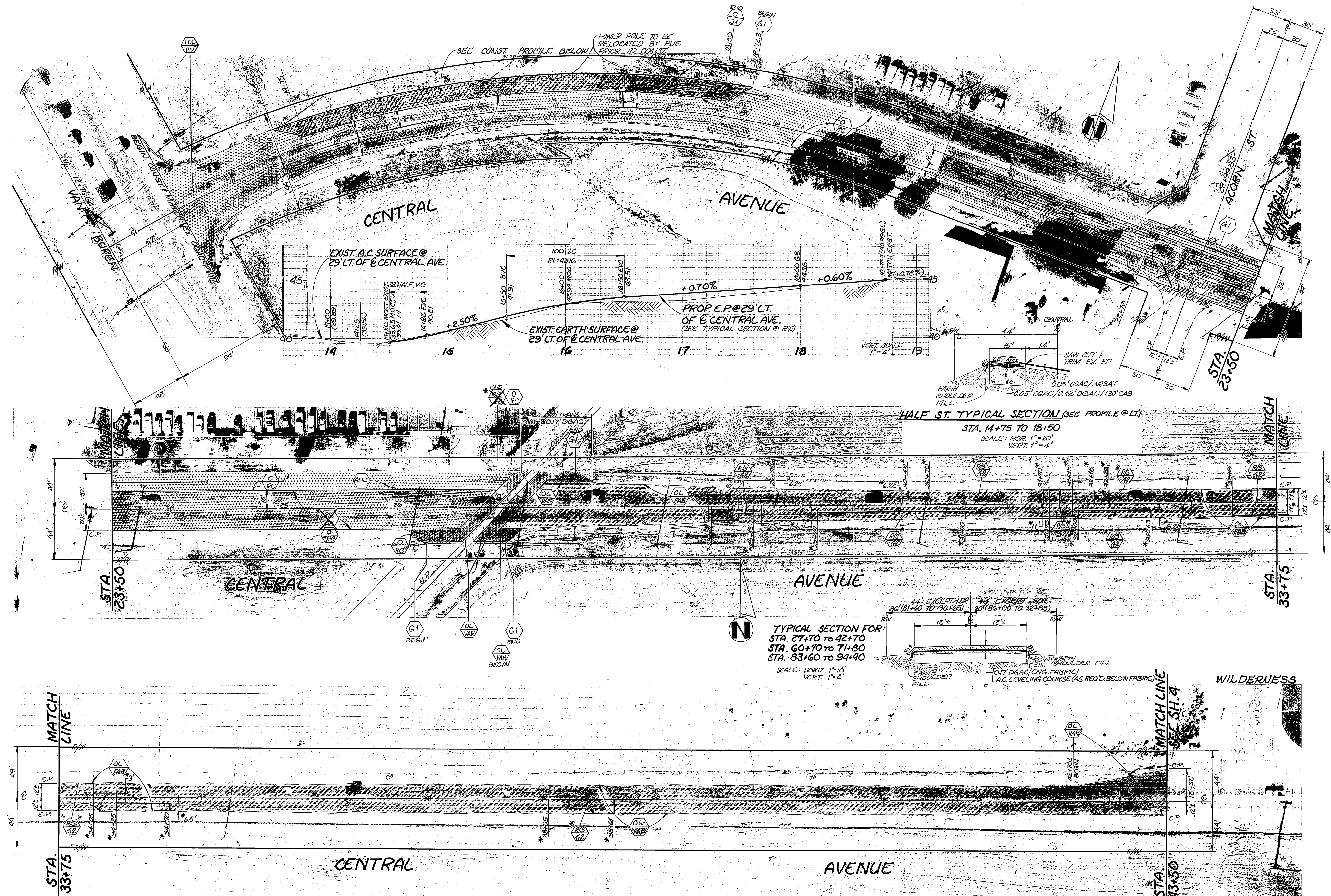
DESIGNED BY: *[Signature]* DRAWN BY: *[Signature]* CHECKED BY: *[Signature]*  
 SURVEYOR: J.W.S. 7218 DATE: \_\_\_\_\_

REHABILITATION OF MAJOR CITY STREETS - 1986

**BLAINE STREET**  
 CANYON CREST TO A.T. & P.F.R.R.

HORIZ. SCALE: 1" = 40' VERT. SCALE: 1" = 4'

INDEXED BY CD.  
 ACCOUNT NO. 30-575-360-09  
**R-2748**  
 SHEET 2 OF 17  
 FILE NO. \_\_\_\_\_



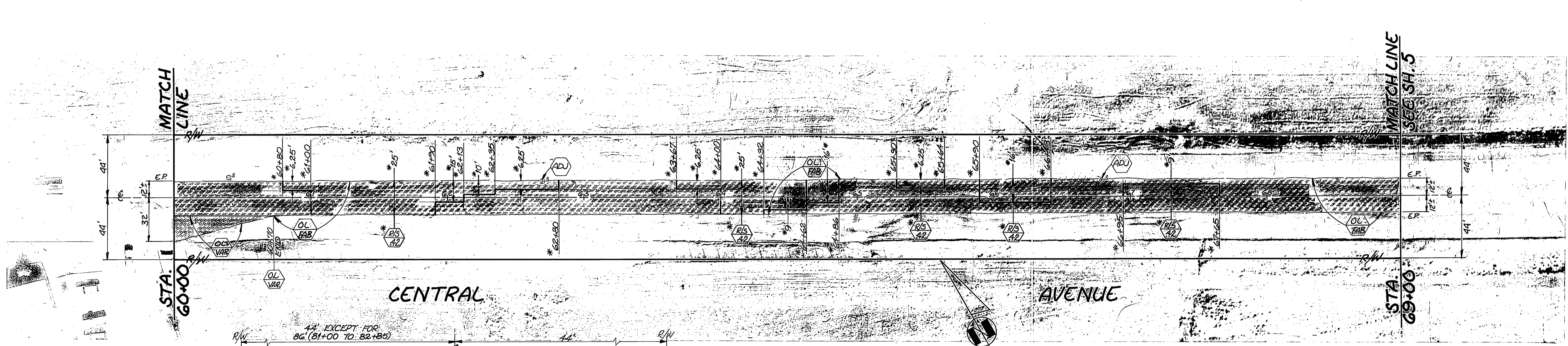
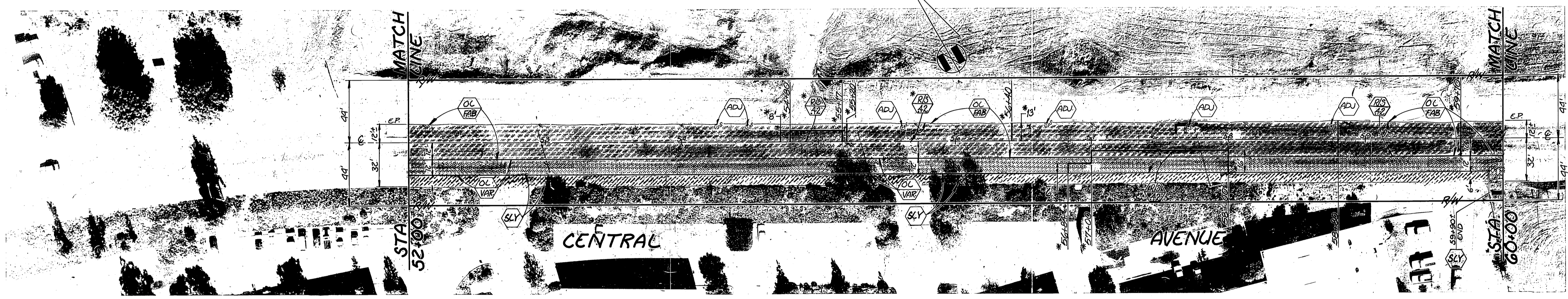
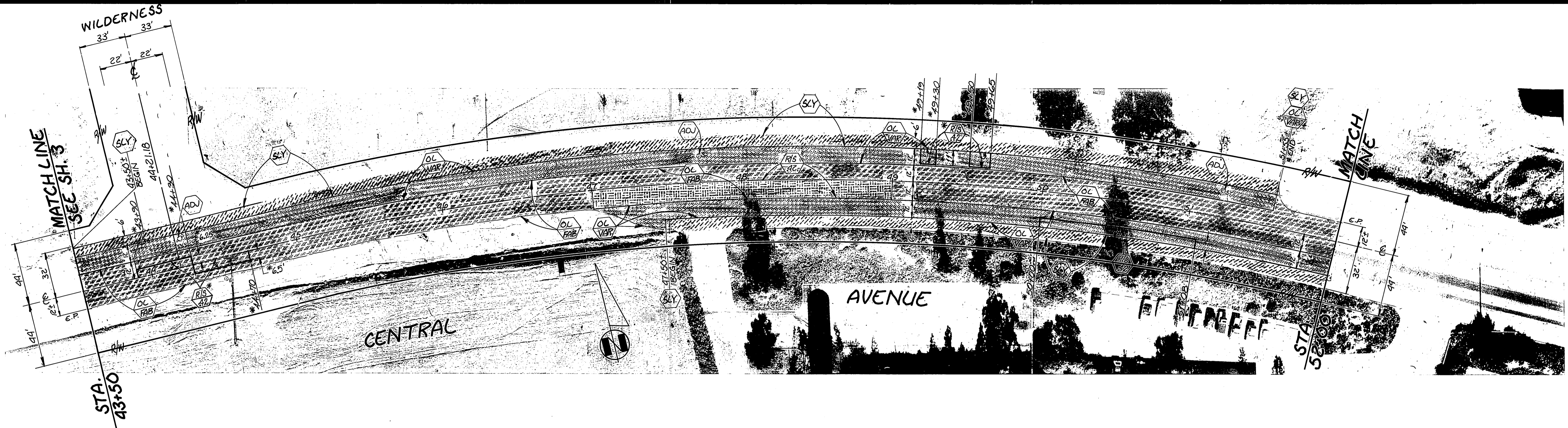
QUANTITIES FOR CENTRAL AVENUE			
ITEM	QUANTITY	ITEM	QUANTITY
OPEN GRADED A.C.	1220 TONS	TRAFFIC SIGNAL LOOPS	3 EA.
DENSE GRADED A.C.	3641 TONS	REMOVE TRAFFIC SIGNAL PADS	4 EA.
ASPHALT RUBBER SAT	21,735 S.Y.	BLUE FIRE HYDRANT MARKERS	17 EA.
A.C. PAVT GRINDING, TYPE I	6050 L.F.	C&G: STD. 200, TYPE I	10 L.F.
EXCAVATION (AC BASE REMOVAL)	263 C.Y.	ASPHALT SLURRY SEAL	2790 S.Y.
D/W APPROACH PER STD 302 II	0	ENGINEERING FABRIC	177,600 S.F.
ADJUST SWR & S.D. M.H. FRAME & COVER TO GRADE	31 EA.	AC BERM: STD. 250, TYPE I	332 L.F.
ADJ. M. GATE VALVE COVER TO GRADE	33 EA.	PAVEMENT PREPARATION	
ADJ. M. M.H. FRAME & COVER TO GRADE	2 EA.	AC REMOVAL	160 CY.
CRUSHED AGGREGATE BASE	330 C.Y.	AC REPLACEMENT (DGAC)	270 TONS

ESTIMATED ACTUAL PAVT. R & R TO BE DETERMINED BY INSPECTOR AT TIME OF CONST.  
 NOTE: STREET WIDTH DIMENSIONS ARE TO C.F. UNLESS OTHERWISE NOTED.

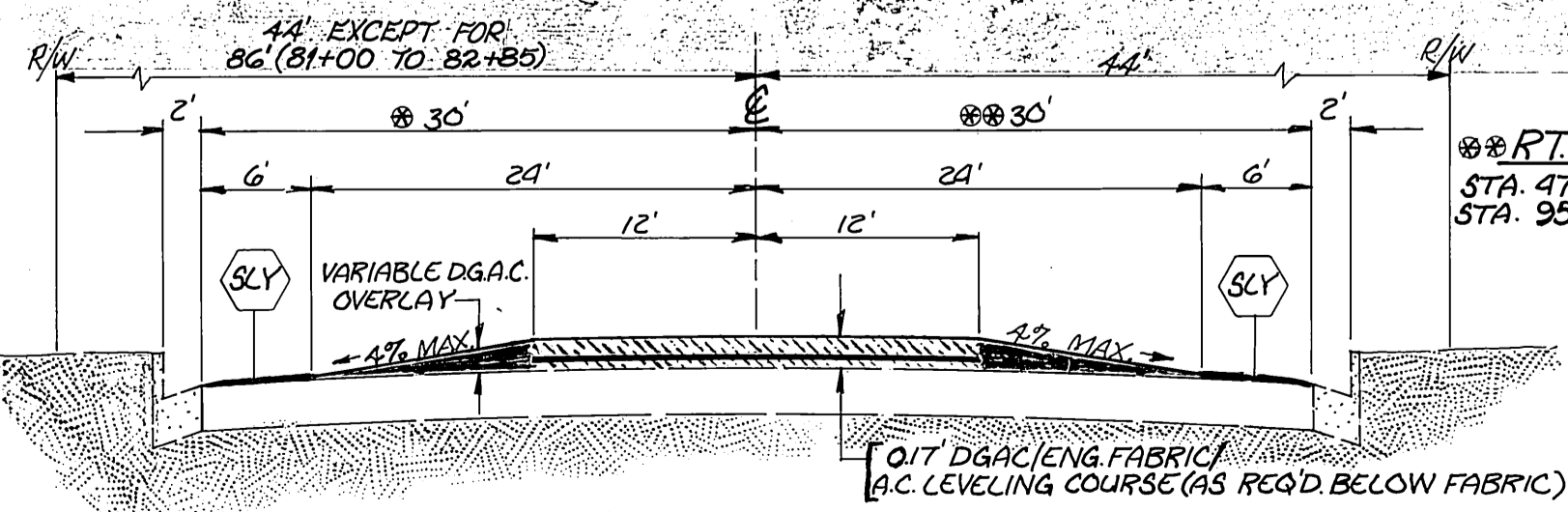
FB: 982/53  
 EL: 741.23  
 BM: 2 FT. IN TC OF MEDIAN NOSE S&LY OF CENTRAL AVE.

<b>CITY OF RIVERSIDE</b> PUBLIC WORKS DEPARTMENT		<b>REHABILITATION OF MAJOR CITY STREETS - 1986</b> CENTRAL AVENUE VAN BUREN TO STREETER		INDEXED BY CD. ACCOUNT NO. 30-575-360-09 <b>R-2748</b> SHEET 3 OF 17 FILE NO.
APPROVED BY PRINCIPAL ENGINEER PARK DEPARTMENT TRAFFIC DIVISION CHIEF F. W. INSPECTOR SURVEYOR	APPROVED BY William D. Gardner PUBLIC WORKS DIRECTOR	DATE 7-22-86	HORIZ. SCALE: 1" = 40' VERT. SCALE: 1" = 4'	DESIGNED BY REVISIONS APPR. DATE DRAWN BY CHECKED BY

INDEXED 4/86 DM.



\*LT. SIDE  
 STA. 43+50 TO 51+55  
 STA. 72+70 TO 82+85  
 STA. 95+30 TO 101+00

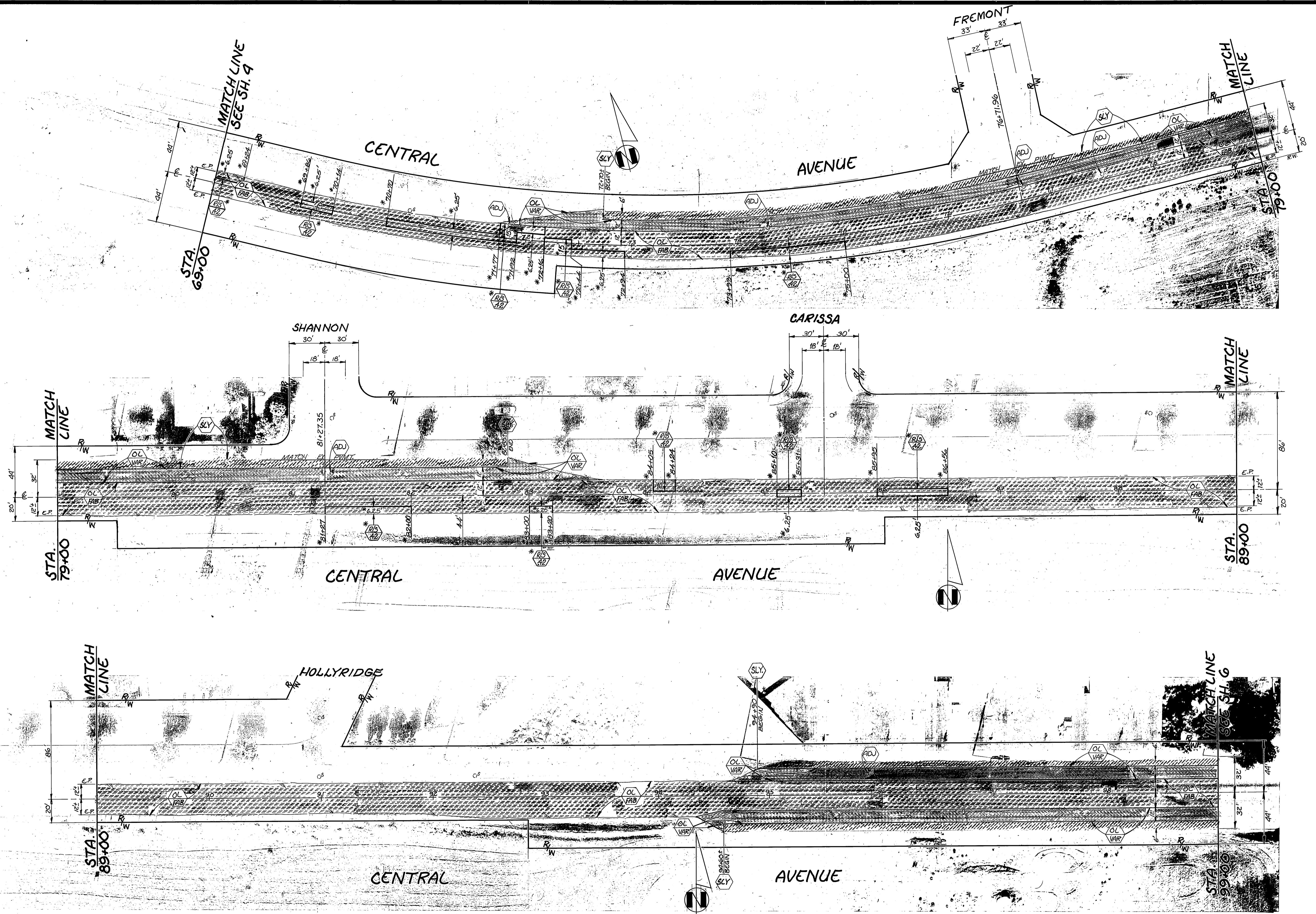


TYPICAL SECTION FOR:  
 STA. 43+50 TO 59+90 SCALE: HORIZ. 1"=10'  
 STA. 72+70 TO 82+85 (LT. SIDE ONLY) VERT. 1"=2'  
 STA. 95+30 TO 99+60

\*\*RT. SIDE  
 STA. 47+50 TO 59+90  
 STA. 95+30 TO 99+60

NOTE: STREET WIDTH DIMENSIONS ARE TO C.F. UNLESS OTHERWISE NOTED.

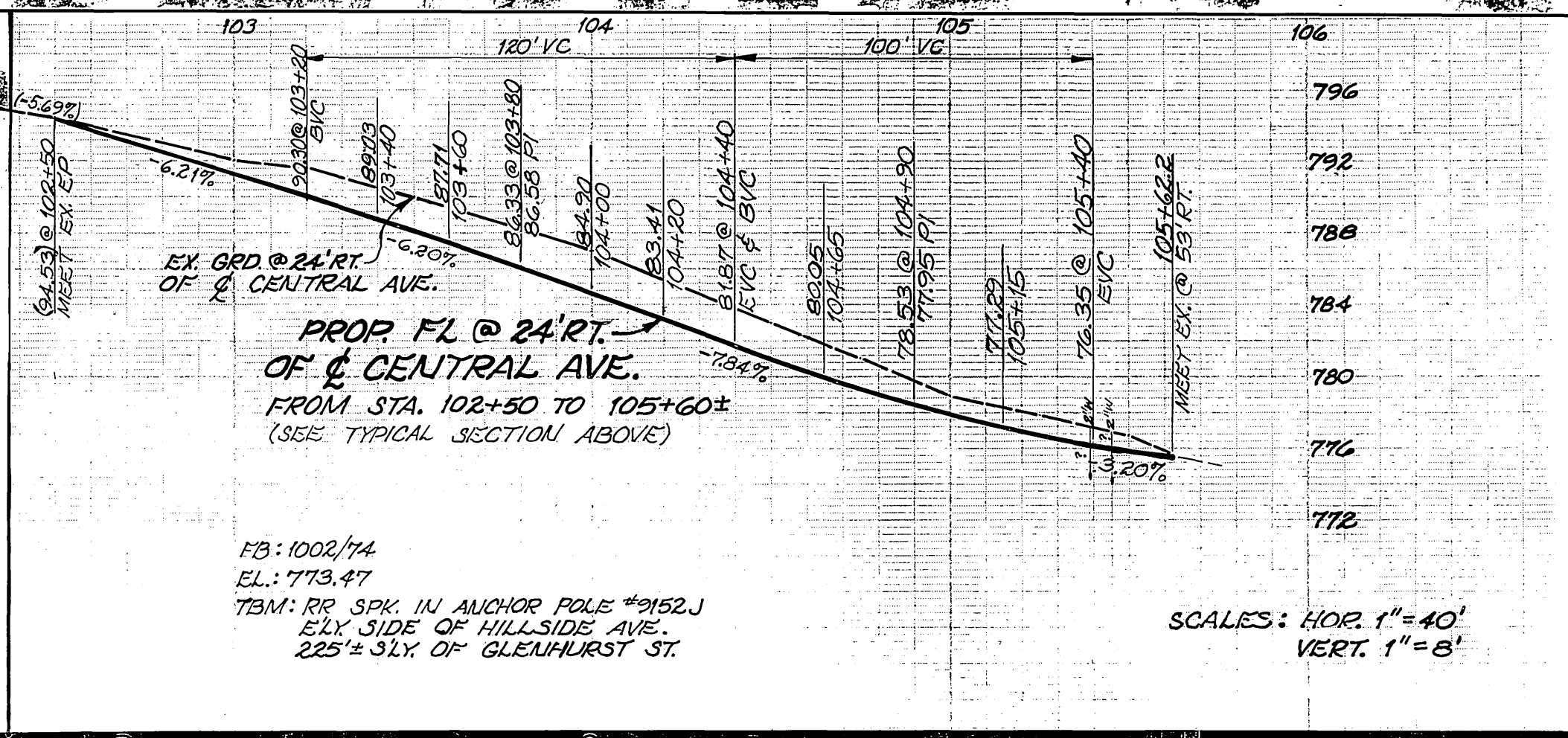
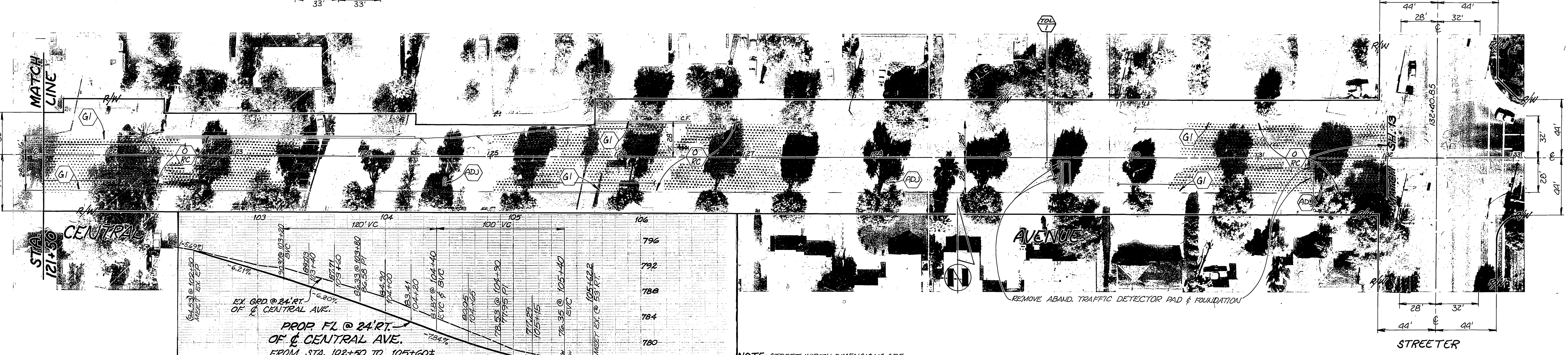
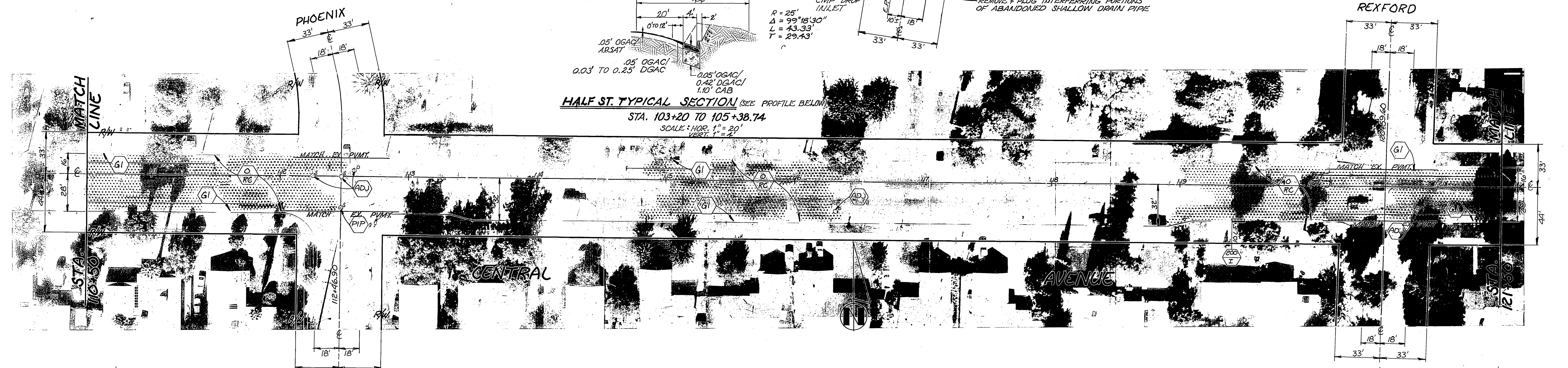
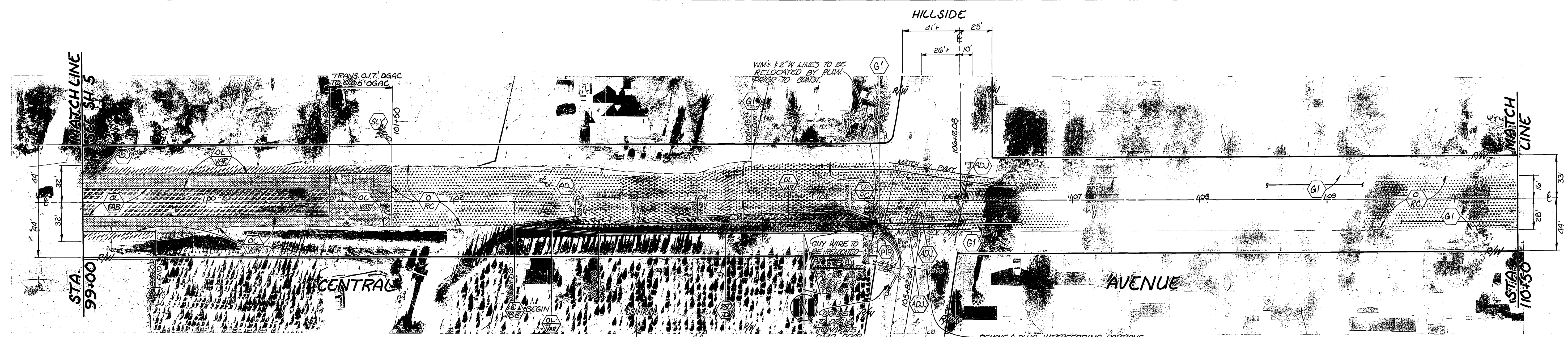
<b>CITY OF RIVERSIDE</b> PUBLIC WORKS DEPARTMENT		REHABILITATION OF MAJOR CITY STREETS - 1986 <b>CENTRAL AVENUE</b> VAN BUREN TO STREETER		ACCOUNT NO. 30-575-360-09 <b>R-2748</b> SHEET 4 OF 11 FILE NO.
APPROVED BY: <i>[Signature]</i> PRINCIPAL ENGINEER PARK DEPARTMENT TRAFFIC DIVISION CHIEF P.W. INSPECTOR SURVEYOR		APPROVED BY: <i>[Signature]</i> PUBLIC WORKS DIRECTOR		DATE 7-22-86 HORIZ. SCALE: 1" = 40' VERT. SCALE: 1" = 10'
DESIGNED BY: <i>[Signature]</i> DRAWN BY: <i>[Signature]</i> CHECKED BY: <i>[Signature]</i>	REVISIONS APPR. DATE	DATE 7-22-86	INDEXED 1/86 D.N.	



NOTE: STREET WIDTH DIMENSIONS ARE TO C.F. UNLESS OTHERWISE NOTED.

<b>CITY OF RIVERSIDE</b> PUBLIC WORKS DEPARTMENT		<b>REHABILITATION OF MAJOR CITY STREETS - 1986</b> CENTRAL AVENUE VAN BUREN TO STREETER		INDEXED BY CD. ACCOUNT NO. 30-575-360-09
APPROVED BY PRINCIPAL ENGINEER <i>[Signature]</i>	APPROVED BY PUBLIC WORKS DIRECTOR <i>[Signature]</i>	*AS BUILT 3/24/88 R/W		
TRAFFIC DIVISION CHIEF P. W. INSPECTOR SURVEYOR	DATE 7-22-86	SHEET 5 OF 11		
DESIGNED BY <i>[Signature]</i> DRAWN BY <i>[Signature]</i> CHECKED BY <i>[Signature]</i>		FILE NO.		

INDEXED 1/86 D.N.



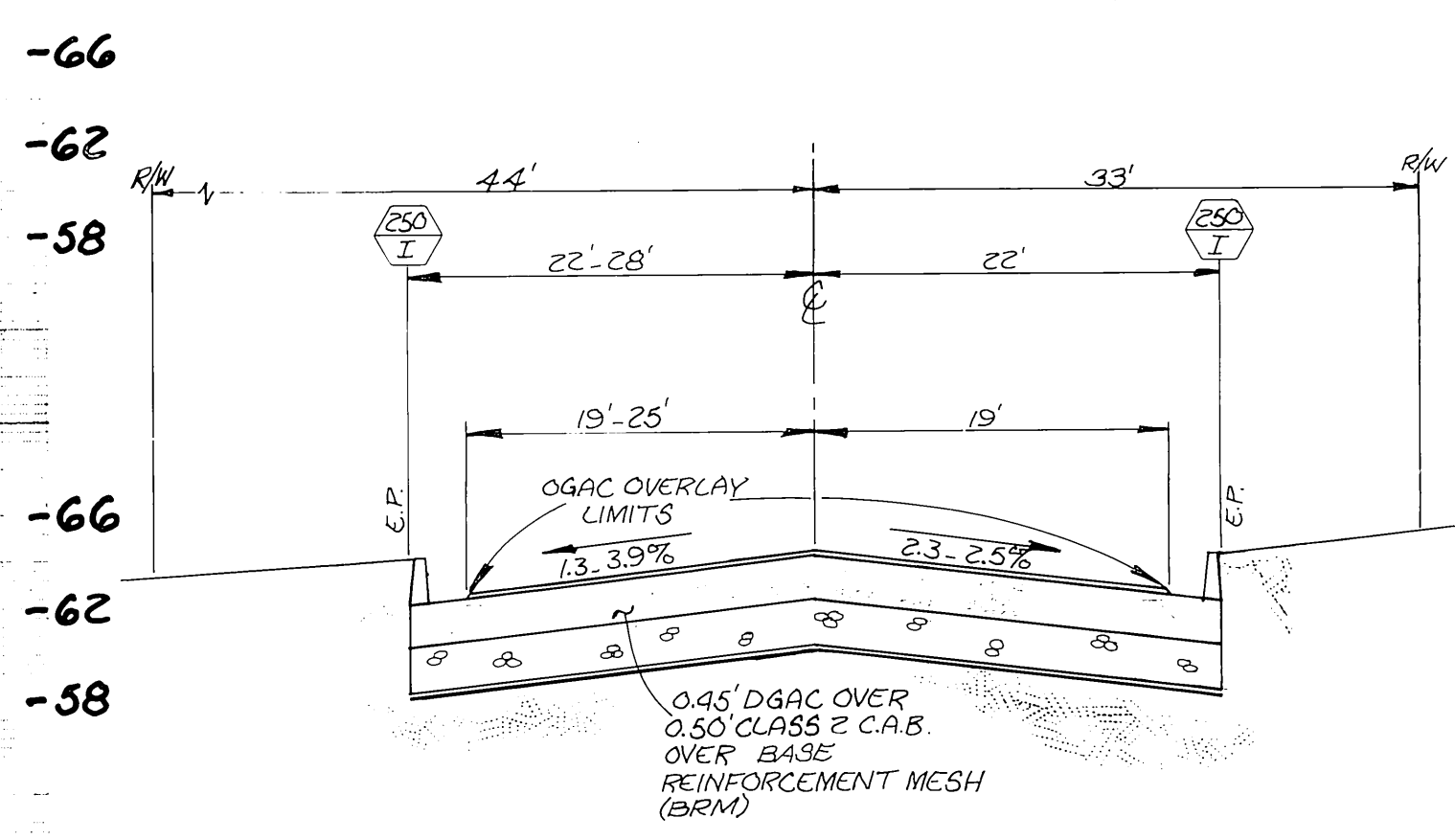
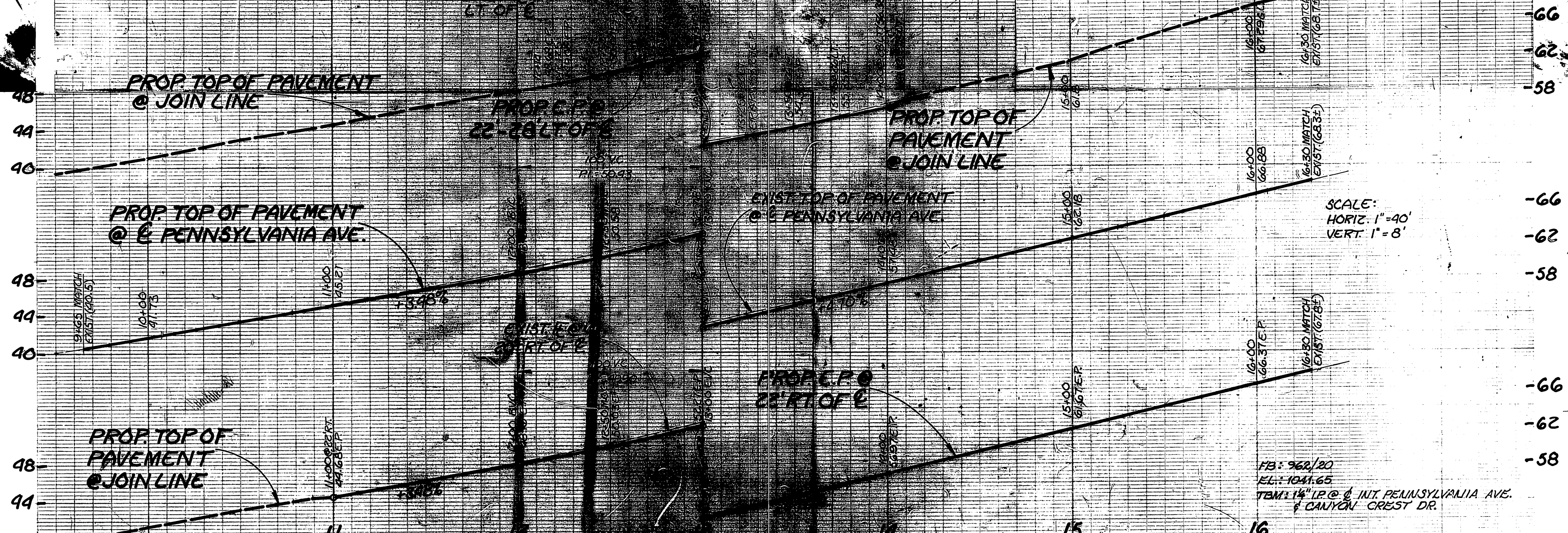
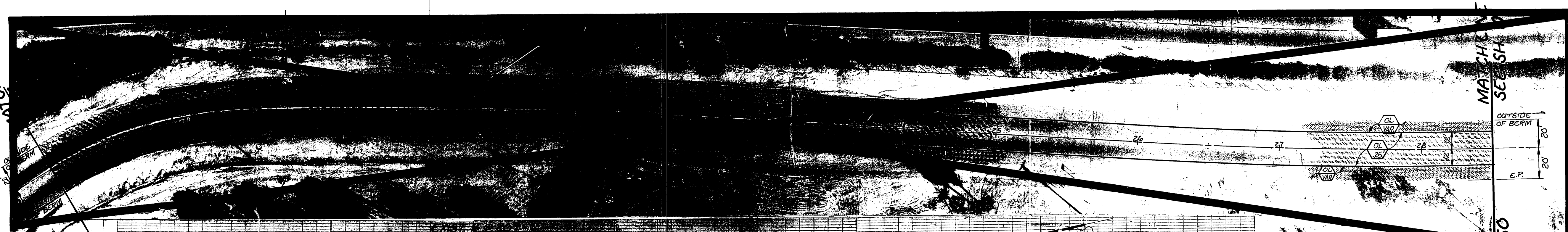
NOTE: STREET WIDTH DIMENSIONS ARE TO C.F. UNLESS OTHERWISE NOTED.

SCALES: HOR. 1" = 40'  
VERT. 1" = 8'

<b>CITY OF RIVERSIDE</b> PUBLIC WORKS DEPARTMENT		<b>REHABILITATION OF MAJOR CITY STREETS - 1986</b> CENTRAL AVENUE VAN BUREN TO STREETER		INDEXED BY CD. ACCOUNT NO. 30-575-360-09 <b>R-2748</b> SHEET 6 OF 17 FILE NO.
DESIGNED BY: J.H. DRAWN BY: S.W. CHECKED BY: R.P.M.	APPROVED BY: [Signature] PRINCIPAL ENGINEER PARK DEPARTMENT TRAFFIC DIVISION CHIEF P. W. INSPECTOR SURVEYOR	APPROVED BY: [Signature] PUBLIC WORKS DIRECTOR	DATE: 7-22-86	AS BUILT 3/24/88 RUM

**MISSING SHEET**

**CAUTION!**  
HIGH PRESSURE GAS



ESTIMATED. ACTUAL PAVT. R&R TO BE DETERMINED BY INSPECTOR AT TIME OF CONST.

QUANTITIES FOR PENNSYLVANIA AVENUE			
ITEM	QUANTITY	ITEM	QUANTITY
OPEN GRADED A.C.	170 TONS	TRAFFIC SIGNAL LOOPS	5 EA. (SEE XL-178)
DENSE GRADED A.C.	980 TONS	REMOVE TRAFFIC SIGNAL PDS	
ASPHALT RUBBER SAT		BLUE FIRE HYDRANT MARKERS	
A.C. PAVT. GRINDING, TYPE I		BRM (GEOGRID)	3,227 SY.
EXCAVATION, A.C. & BASE	1,076 SY.	AC. BERM - STD. 280, TYPE I	775 LF.
D/W APPROACH PER STD. 302 II		ASPHALT SLURRY SEAL	965 SY.
ADJUST SWR & S.D. M.H. FRAME & COVER TO GRADE		PAVEMENT PREPARATION	
ADJUST WATER GATE VALVE COVER TO GRADE		AC. REMOVAL	
CRUSHED AGG. BASE	598 CY	AC. REPLACEMENT (OGAC)	

NOTE: STREET WIDTH DIMENSIONS ARE TO C.F. UNLESS OTHERWISE NOTED.

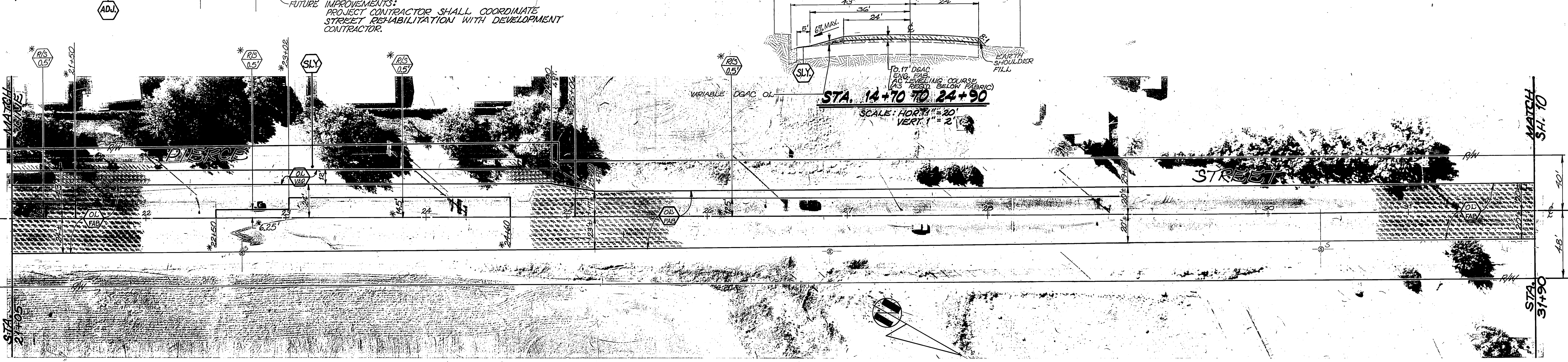
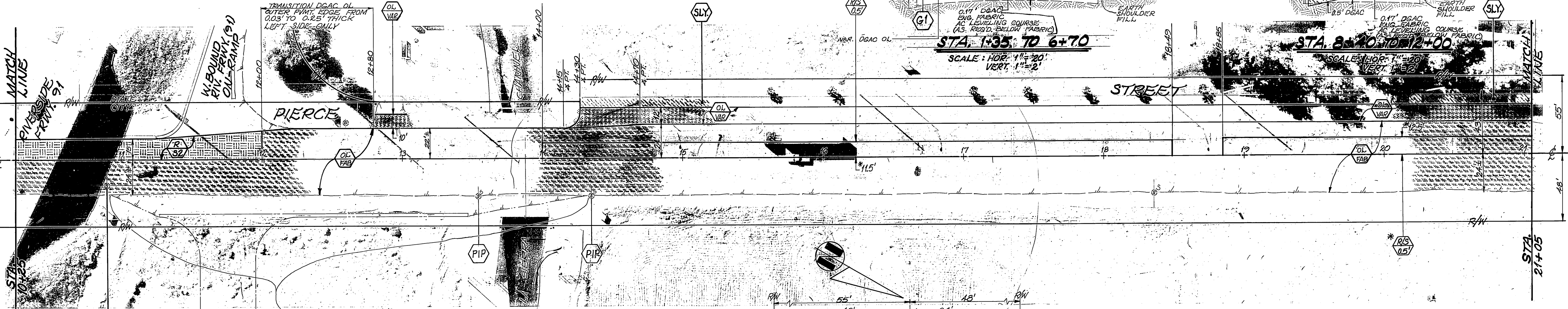
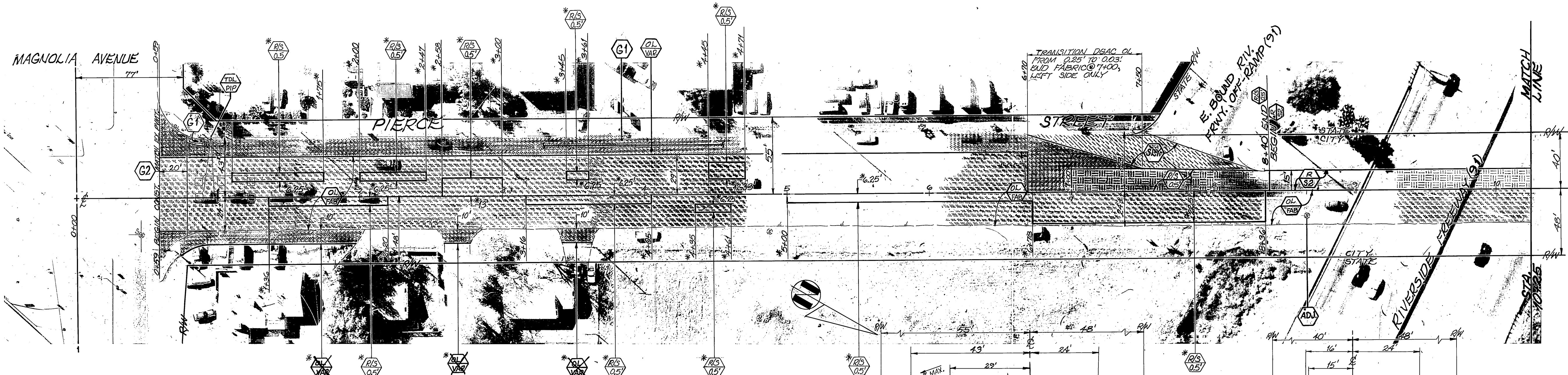
**CITY OF RIVERSIDE**  
PUBLIC WORKS DEPARTMENT

REHABILITATION OF MAJOR CITY STREETS - 1986  
PENNSYLVANIA AVENUE  
CANYON CREST TO BOX SPRINGS BLVD.

INDEXED BY CD.  
ACCOUNT NO. 30-575-360-09  
**R-2748**  
SHEET 8 OF 17  
FILE NO.



MAGNOLIA AVENUE



QUANTITIES FOR PIERCE STREET			
ITEM	QUANTITY	ITEM	QUANTITY
*OPEN GRADED A.C.	1821 TONS	TRAFFIC SIGNAL LOOPS	13 EA. (SEE XL-182)
DENSE GRADED A.C. *B, 914	1153 TONS	REMOVE TRAFFIC SIGNAL PADS	-
ASPHALT RUBBER SAT	33,725 SY	BLUE FIRE HYDRANT MARKERS	11 EA.
A.C. P.V.M.T. GRINDING, TYPE I	9,667 LF.	ENG. FABRIC	270,685 SF
EXCAVATION, A.C. BASE	1,610 CY.	ASPHALT SLURRY SEAL	1,351 SY
D/W APPROACH PER STD. 302 II	-	AC P.V.M.T. GRINDING, TYPE II	667 SY
ADJUST SWR & S.D. M.H. FRAME & COVER TO GRADE	28 EA.	PAVEMENT PREPARATION	
ADJUST WATER GATE VALVE COVER TO GRADE	19 EA.	AC REMOVAL	208 CY
		AC REPLACEMENT (OGAC)	421 TONS

\*ESTIMATED ACTUAL P.V.M.T. R & R TO BE DETERMINED BY INSPECTOR AT TIME OF CONST.

**CITY OF RIVERSIDE**  
PUBLIC WORKS DEPARTMENT

APPROVED BY: [Signature]  
PRINCIPAL ENGINEER

APPROVED BY: [Signature]  
PUBLIC WORKS DIRECTOR

DATE: 7-22-86

REHABILITATION OF MAJOR CITY STREETS - 1986

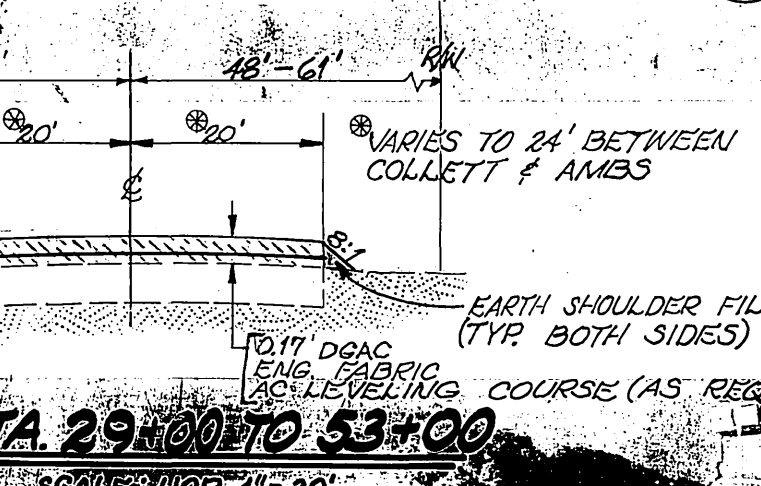
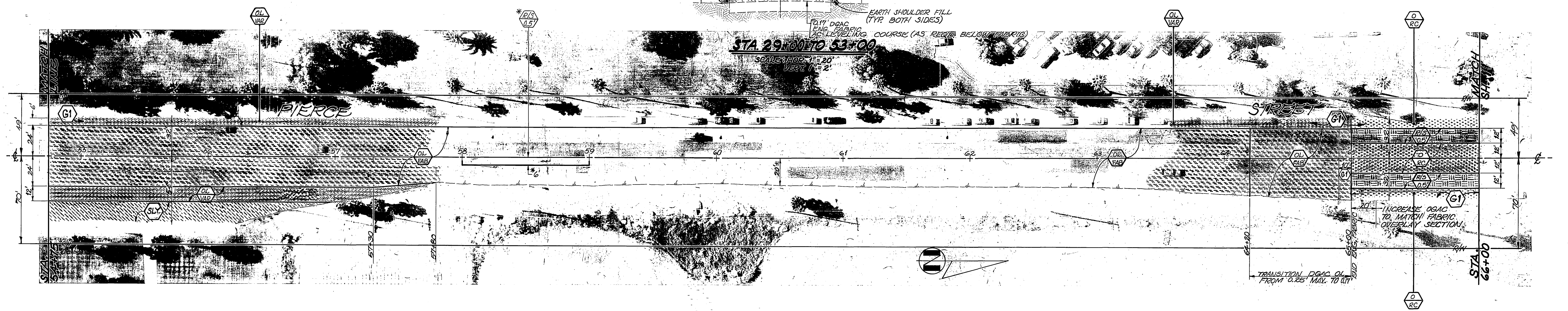
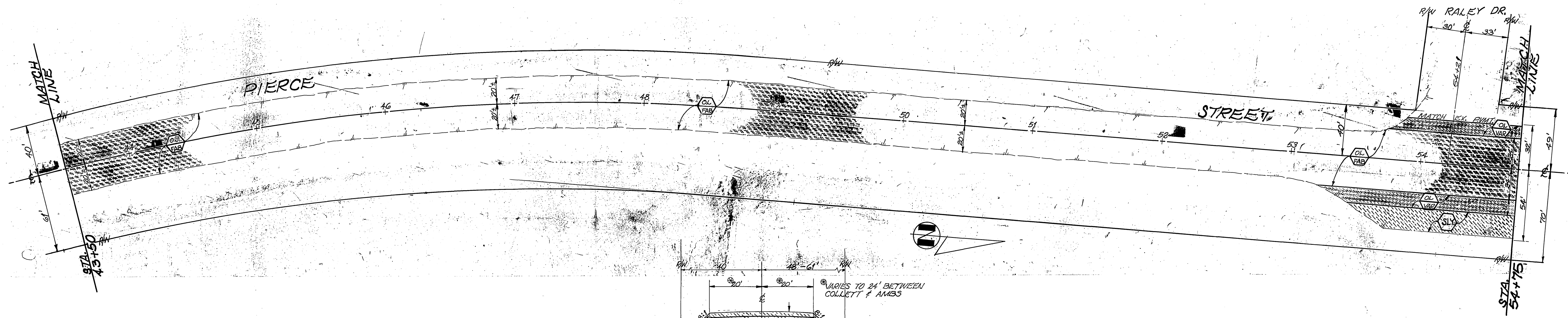
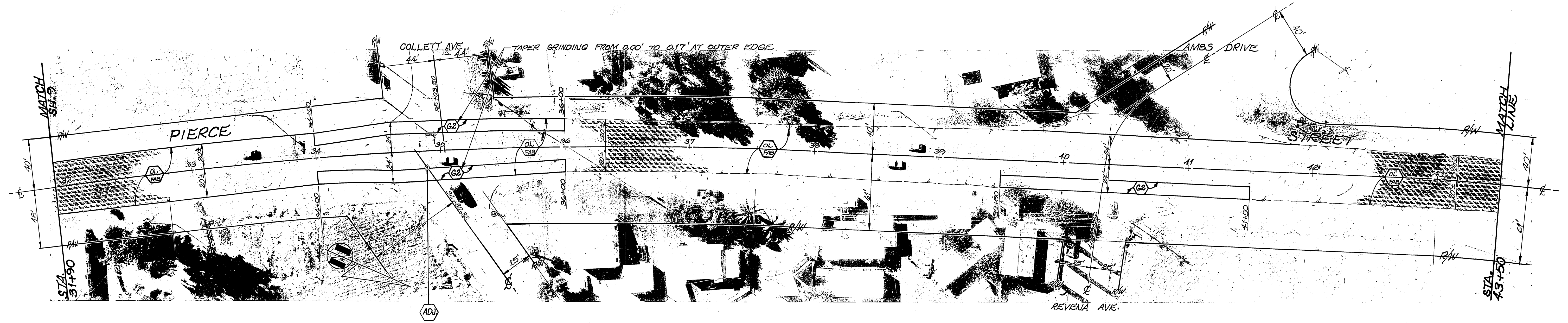
PIERCE STREET  
MAGNOLIA TO LA SIERRA

INDEXED BY CD.  
ACCOUNT NO. 30-575-360-09

**R-2748**

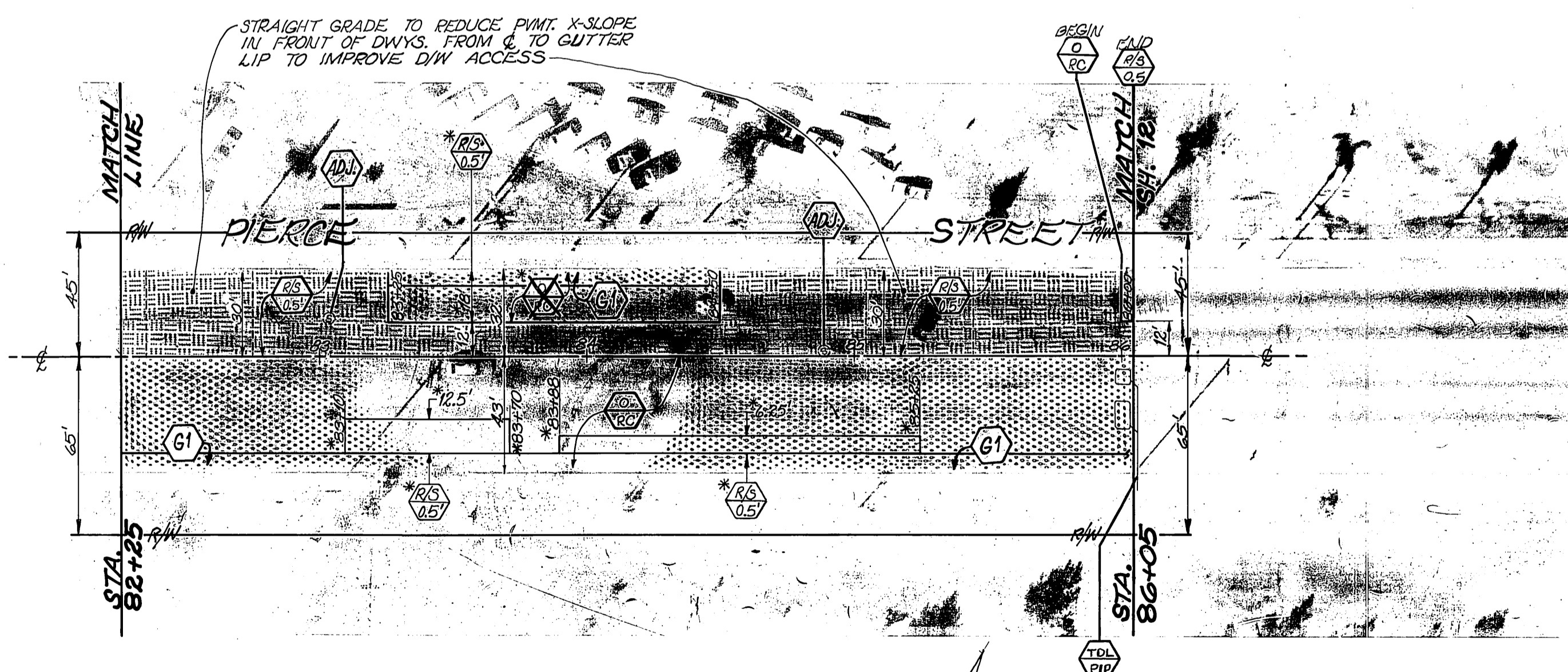
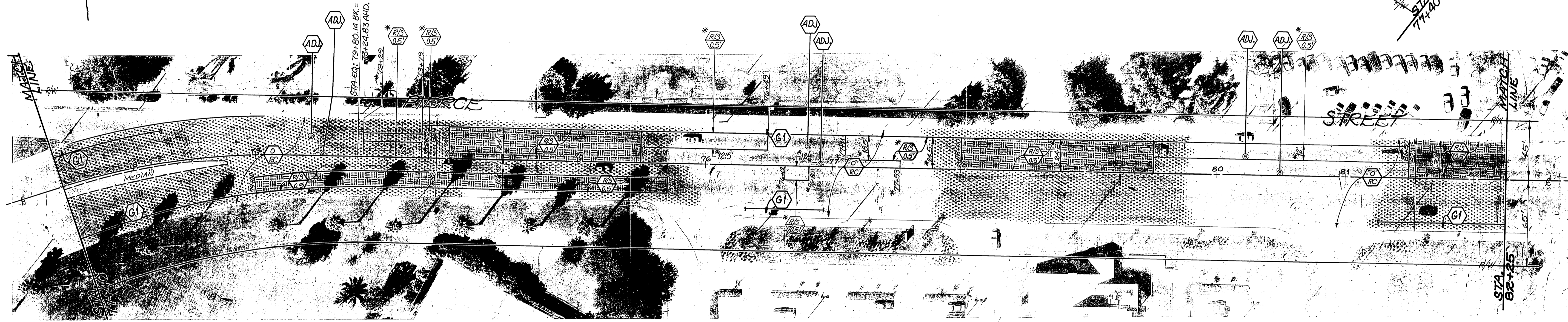
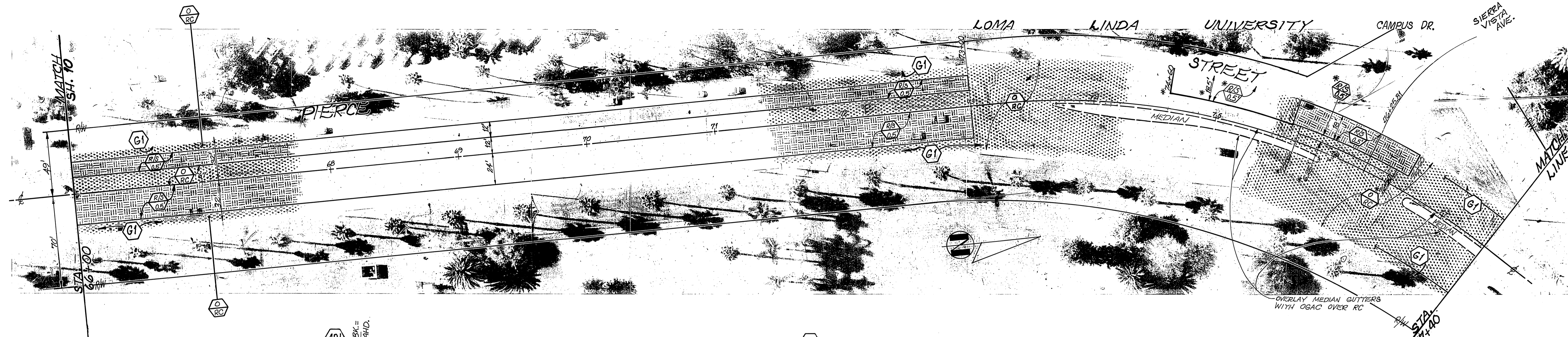
SHEET 2 OF 17

FILE NO.



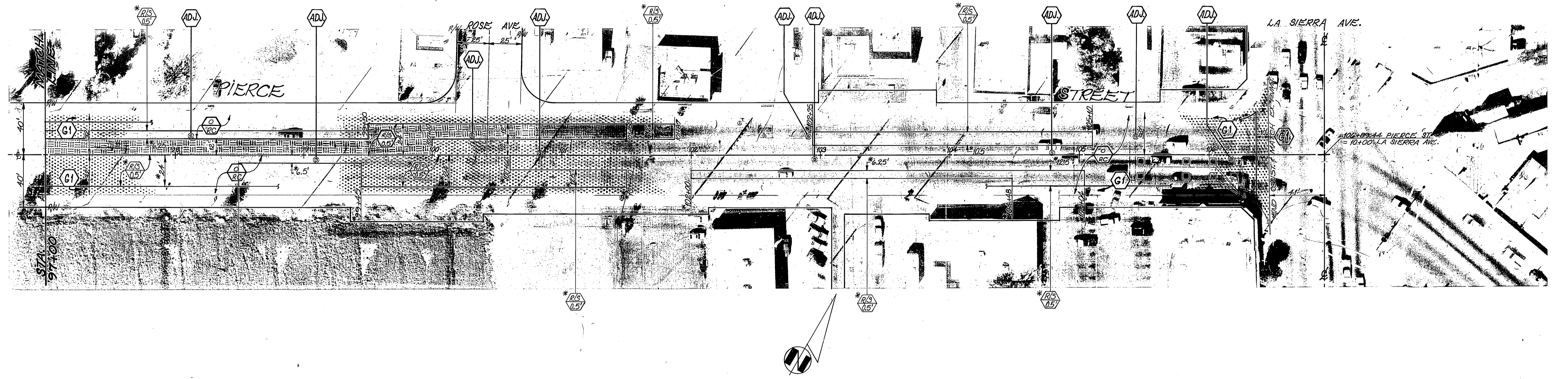
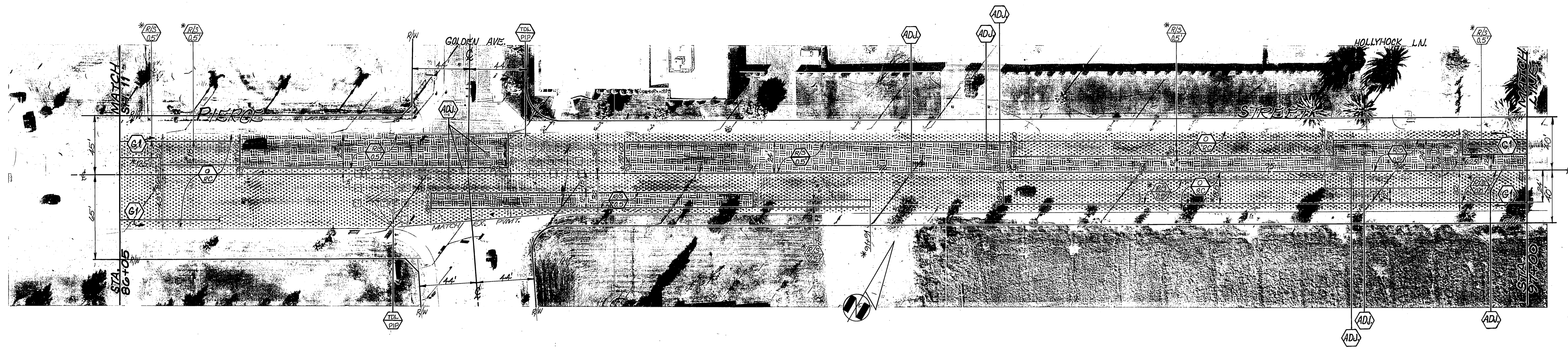
<b>CITY OF RIVERSIDE</b> PUBLIC WORKS DEPARTMENT		<b>REHABILITATION OF MAJOR CITY STREETS - 1986</b> PIERCE STREET MAGNOLIA TO LA SIERRA		INDEXED BY CD ACCOUNT NO. 30-875-360-09 <b>R-2748</b> SHEET 10 OF 17 FILE NO.
APPROVED BY PRINCIPAL ENGINEER <i>[Signature]</i>	APPROVED BY PUBLIC WORKS DIRECTOR <i>[Signature]</i>	DATE 7-22-86	HORIZ. SCALE: 1" = 40' VERT. SCALE: 1" = 1'	
DESIGNED BY <i>[Signature]</i>	DRAWN BY <i>[Signature]</i>	CHECKED BY <i>[Signature]</i>	*AS BUILT Alpha 1/86	

INDEXED 1/86 D.M.



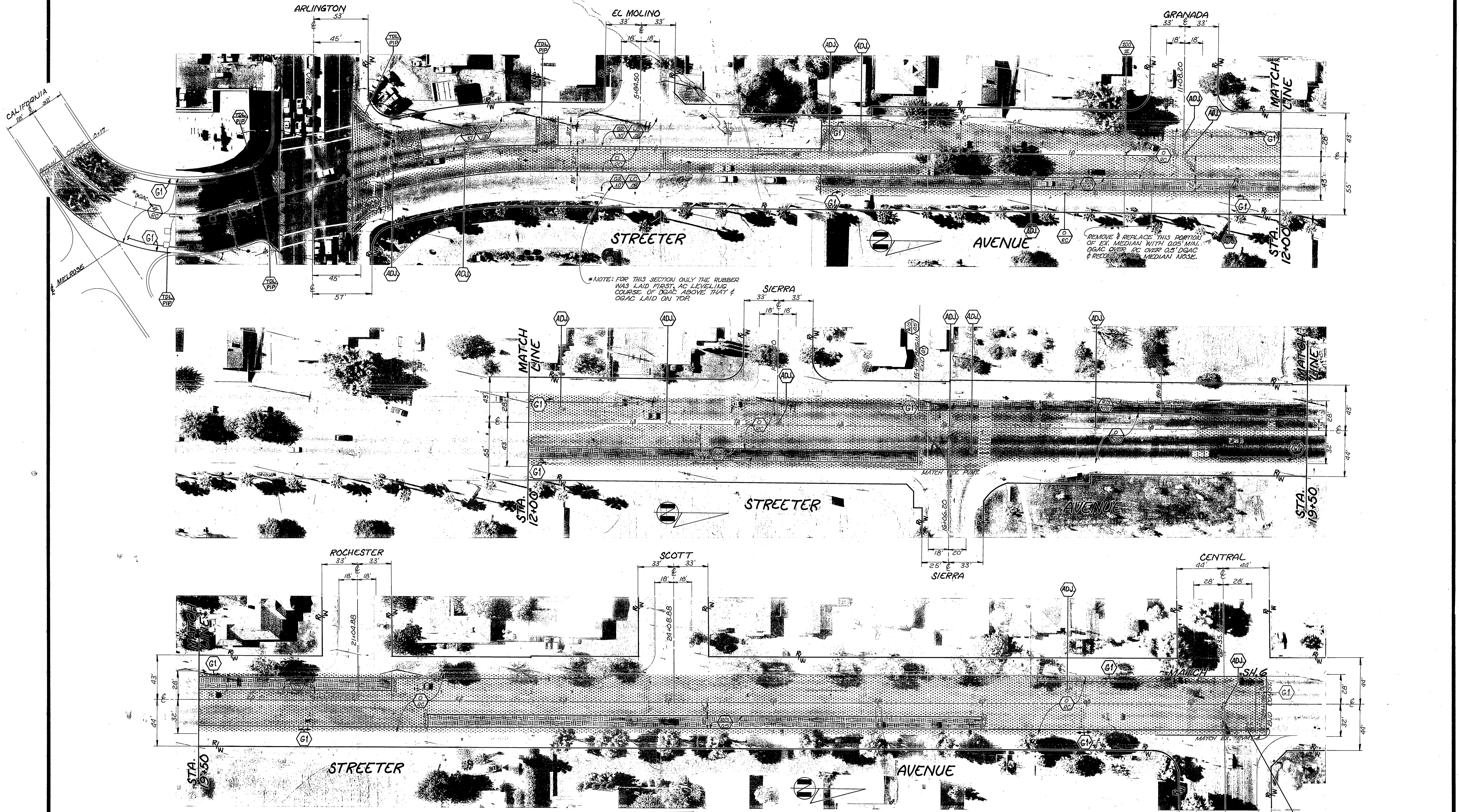
<b>CITY OF RIVERSIDE</b> PUBLIC WORKS DEPARTMENT		<b>REHABILITATION OF MAJOR CITY STREETS - 1986</b> PIERCE STREET MAGNOLIA TO LA SIERRA		INDEXED BY CD. ACCOUNT NO. 30-575-360-09 <b>R-2748</b> SHEET 11 OF 17 FILE NO.
APPROVED BY PRINCIPAL ENGINEER PARK DEPARTMENT TRAFFIC DIVISION SURVEYOR	APPROVED BY PUBLIC WORKS DIRECTOR	DESIGNED BY: <i>J.F.</i> DRAWN BY: <i>LM</i> CHECKED BY: <i>PCM</i>	DATE: 7-22-86	HORIZ. SCALE: 1" = 40' VERT. SCALE: 1" = 10'

INDEXED 1/86 DM.



<b>CITY OF RIVERSIDE</b> PUBLIC WORKS DEPARTMENT		REHABILITATION OF MAJOR CITY STREETS - 1986 <b>PIERCE STREET</b> MAGNOLIA TO LA SIERRA		INDEXED BY CD ACCOUNT NO. 30-575-360-09 <b>R-2748</b> SHEET 12 OF 17 FILE NO.
APPROVED BY PRINCIPAL ENGINEER <i>W. D. Gardner</i> PARK DEPARTMENT TRAFFIC DIVISION CHIEF P.W. INSPECTOR SURVEYOR		APPROVED BY <i>William D. Gardner</i> PUBLIC WORKS DIRECTOR		DATE 7-22-86
DESIGNED BY <i>J.H.</i> DRAWN BY <i>R.L.</i> CHECKED BY <i>R.M.</i>	REVISIONS APPR. DATE	MARK	HORIZ. SCALE: 1" = 40' VERT. SCALE: 1" = 10'	*AS BUILT Aerials P.W.

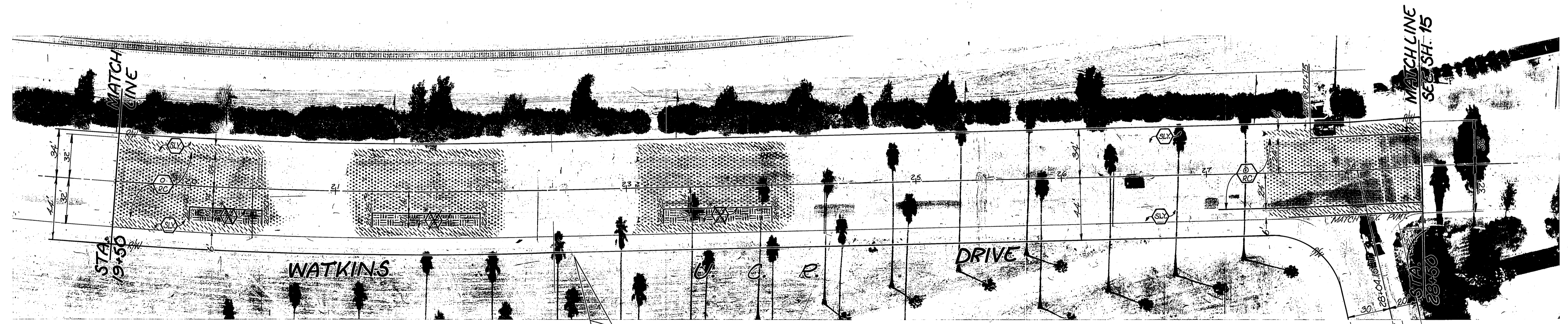
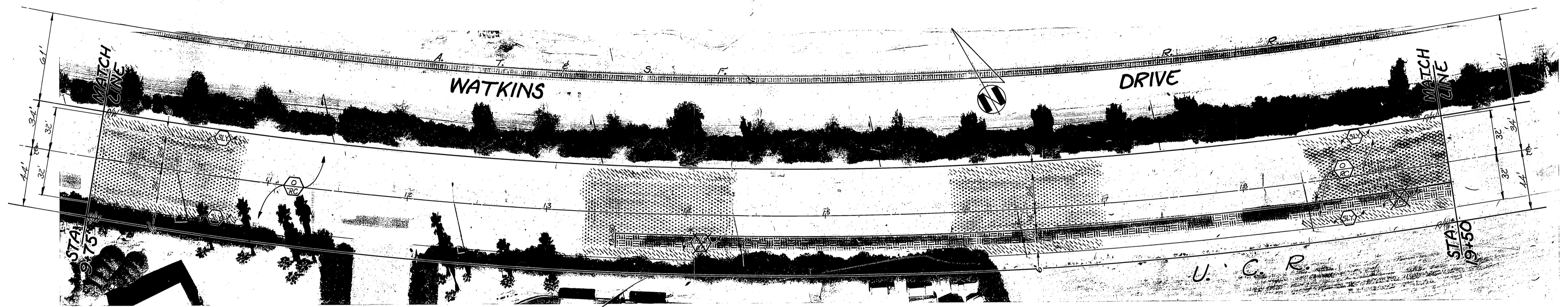
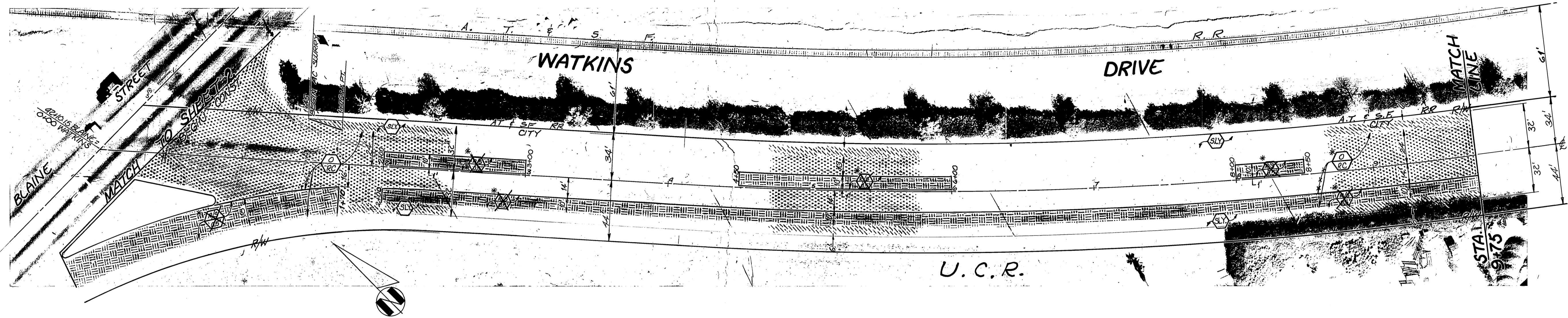
INDEXED 1/88 D.N.



QUANTITIES FOR STREETER AVENUE			
ITEM	QUANTITY	ITEM	QUANTITY
OPEN GRADED A.C.	1,125 TONS	TRAFFIC SIGNAL LOOPS	2 EA. (SEE XL-180)
DENSE GRADED A.C.	980 TONS	REMOVE TRAFFIC SIGNAL PADS	—
ASPHALT RUBBER SAT	20,785 SY	BLUE FIRE HYDRANT MARKERS	5 EA.
A.C. P.V.M.T. GRINDING, TYPE I	5,183 LF	AC P.V.M.T. GRINDING TYPE II	1,920 SY
EXCAVATION, A.C. & BASE	430 CY	ADJUST WATER MH FRAME & COVER TO GRADE	3 EA.
D/W APPROACH PER STD. 302 II	—	CURB PER STD. 200, TYPE III	5 LF
ADJUST SWR & S.D. M.H. F.C.O. FRAME & COVER TO GRADE	14 EA.	PAVEMENT PREPARATION	—
ADJUST WATER GATE VALVE COVER TO GRADE	17 EA.	AC REMOVAL	152 CY
		AC REPLACEMENT (DGAC)	310 TONS

⊕ ESTIMATED ACTUAL P.V.M.T. REF. TO BE DETERMINED BY INSPECTOR AT TIME OF CONST.  
 NOTE: STREET WIDTH DIMENSIONS ARE TO C.F. UNLESS OTHERWISE NOTED.

<b>CITY OF RIVERSIDE</b> PUBLIC WORKS DEPARTMENT		<b>REHABILITATION OF MAJOR CITY STREETS - 1986</b> <b>STREETER AVENUE</b> ARLINGTON TO CENTRAL		INDEXED BY CD ACCOUNT NO. 30-575-360-09
APPROVED BY PRINCIPAL ENGINEER PARK DEPARTMENT TRAFFIC DIVISION CHIEF P. W. INSPECTOR SURVEYOR	APPROVED BY William D. Gardner PUBLIC WORKS DIRECTOR	DATE 7-22-86	SHEET 13 OF 17	FILE NO.
DESIGNED BY: J.H. DRAWN BY: R.M. CHECKED BY: R.M.		HORIZ. SCALE: 1" = 40' VERT. SCALE: 1" = 10'		



QUANTITIES FOR WATKINS DRIVE			
ITEM	QUANTITY	ITEM	QUANTITY
OPEN GRADED A.C.	1,957 TONS	TRAFFIC SIGNAL LOOPS	-
DENSE GRADED A.C.	3,749 TONS	REMOVE TRAFFIC SIGNAL PADS	-
ASPHALT RUBBER SAT	36,238 SY	BLUE FIRE HYDRANT MARKERS	10 EA.
A.C. PAVT. GRINDING, TYPE I	-	ASPHALT SLURRY SEAL	12,023 SY
EXCAVATION: A.C. & BASE	1,852 CY	CURB STD. 200, TYPE III	817 LF
D/W APPROACH PER STD. 302.2	-		
ADJUST SWR & S.D. M.H. FRAME & COVER TO GRADE	14 EA.	PAVEMENT PREPARATION	
ADJUST WATER GATE VALVE COVER TO GRADE	29 EA.	AC REMOVAL	209 CY
		AC REPLACEMENT (OGAC)	424 TONS

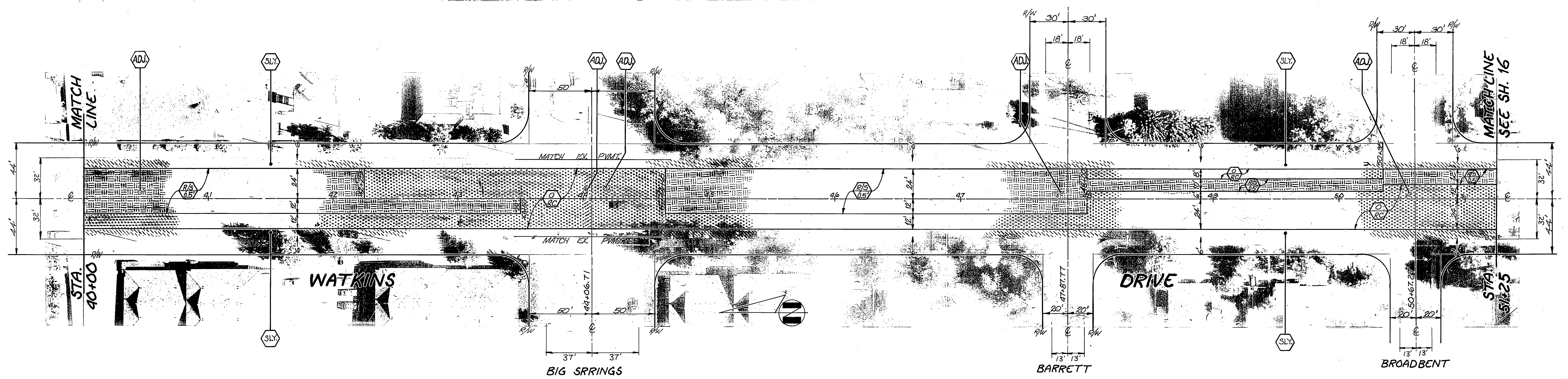
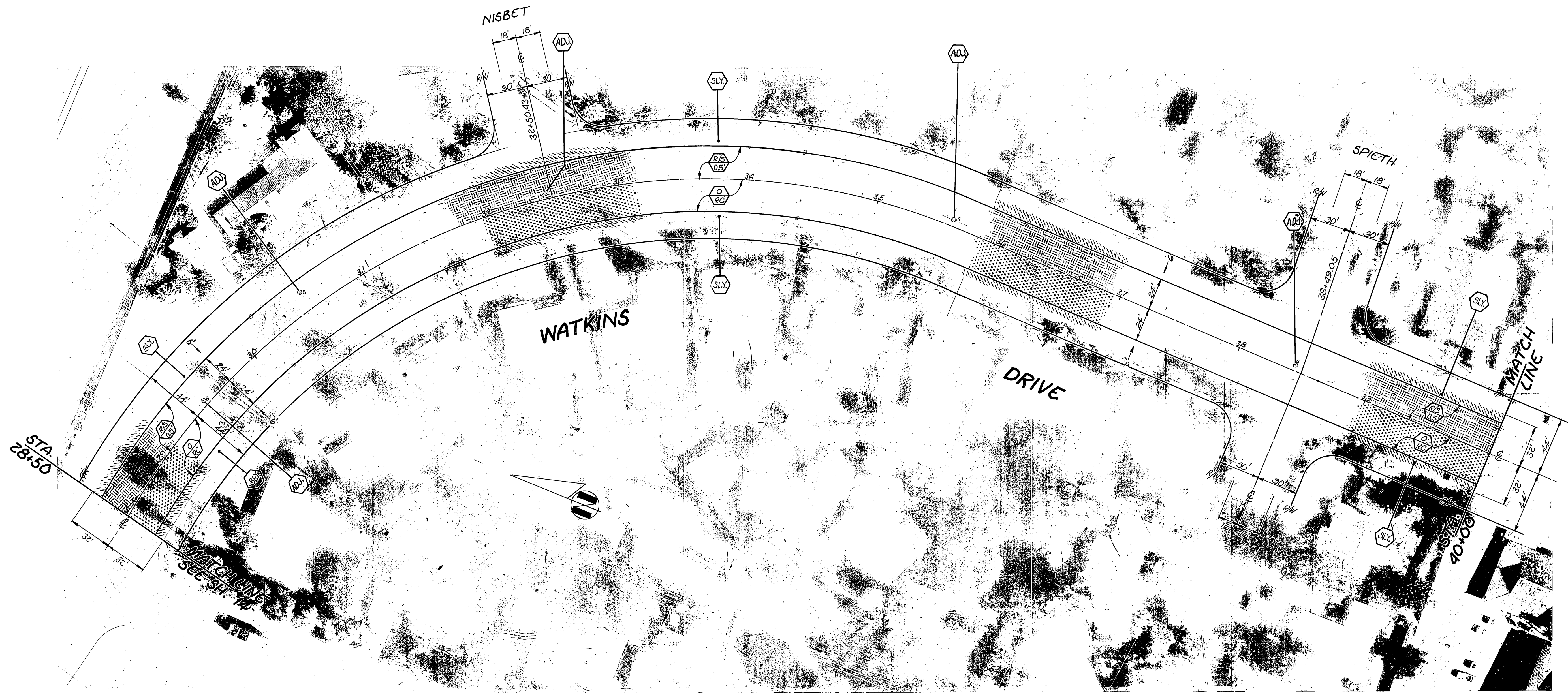
ESTIMATED ACTUAL PAVT. R&R TO BE DETERMINED BY INSPECTOR AT TIME OF CONSTRUCTION.

PAVEMENT REMOVALS DELETED FROM PROJECT BETWEEN BLAINE & STA. 27+00.

NOTE: STREET WIDTH DIMENSIONS ARE TO CF UNLESS OTHERWISE NOTED.

<b>CITY OF RIVERSIDE</b> PUBLIC WORKS DEPARTMENT		REHABILITATION OF MAJOR CITY STREETS - 1986 <b>WATKINS DRIVE</b> BLAINE TO MT. VERNON		INDEXED BY CD. ACCOUNT NO. 30-575-360-09 <b>R-2748</b> SHEET 14 OF 17 FILE NO.
		APPROVED BY PRINCIPAL ENGINEER PARK DEPARTMENT TRAFFIC DIVISION CHIEF P.W. INSPECTOR SURVEYOR	APPROVED BY William D. Gardner PUBLIC WORKS DIRECTOR	DATE 7-22-86

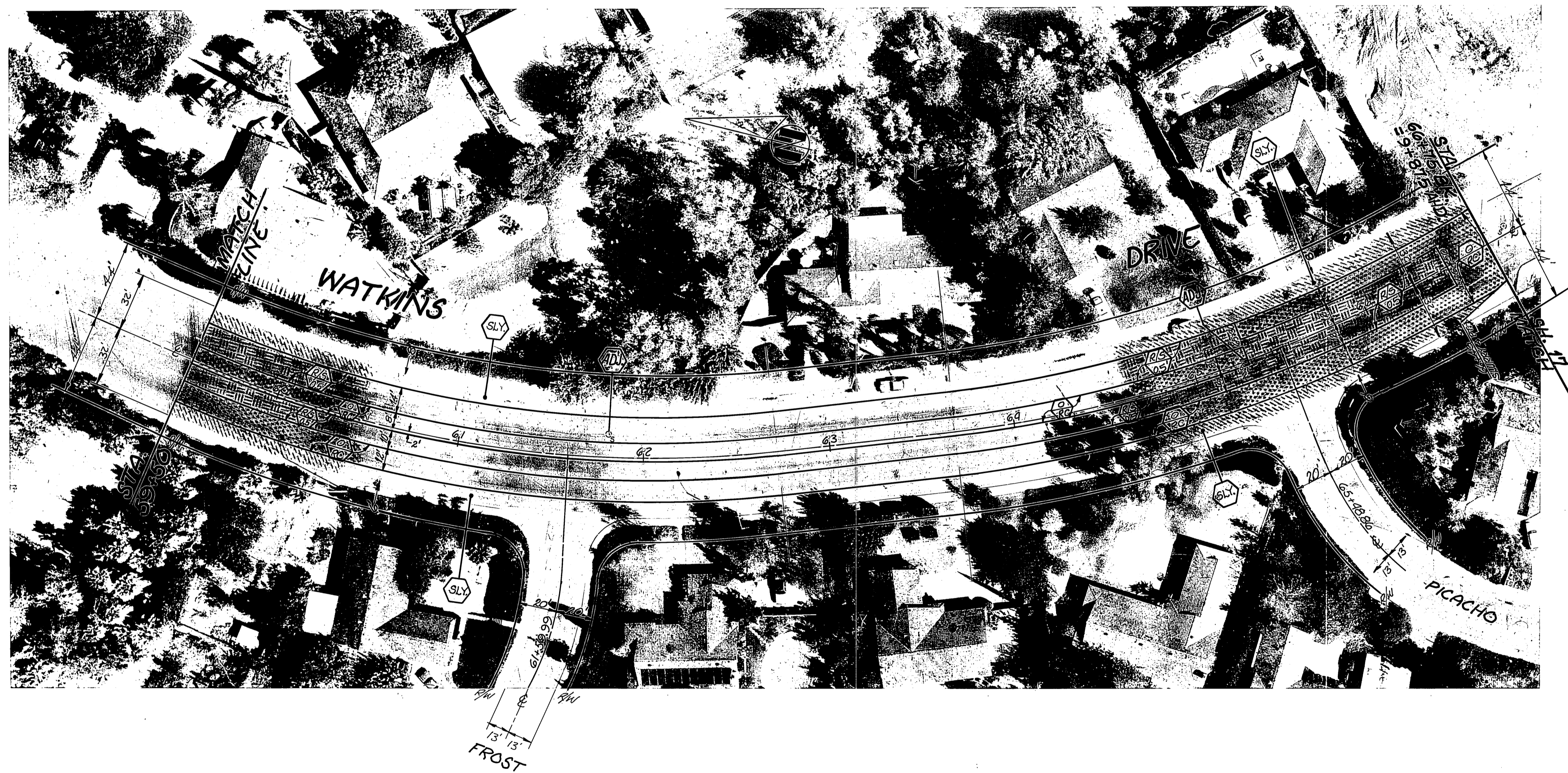
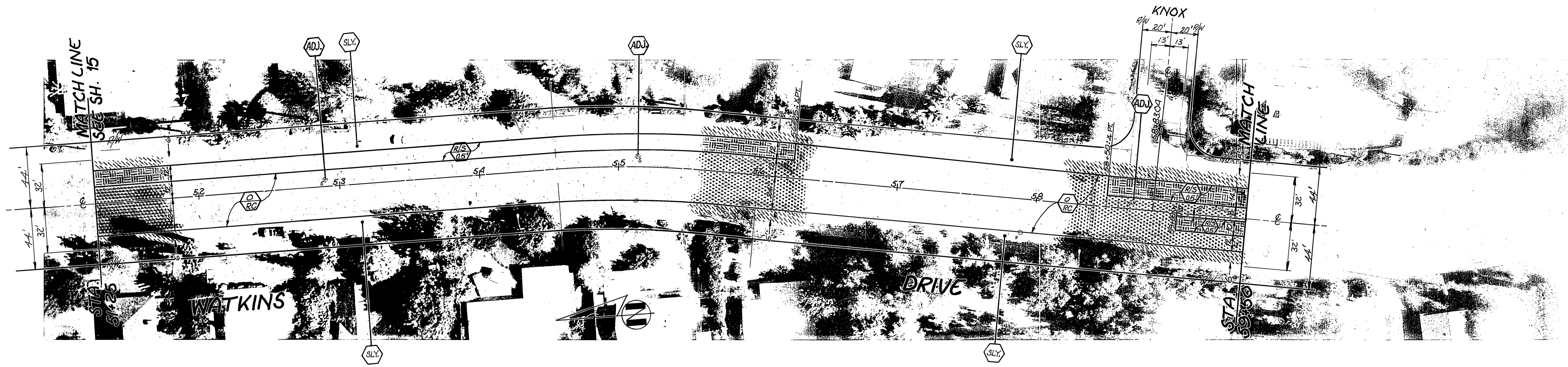
INDEXED 1/86 D.N.



NOTE: STREET WIDTH DIMENSIONS ARE TO C.F. UNLESS OTHERWISE NOTED.

<b>CITY OF RIVERSIDE</b> PUBLIC WORKS DEPARTMENT		<b>REHABILITATION OF MAJOR CITY STREETS - 1986</b> <b>WATKINS DRIVE</b> BLAINE TO MT. VERNON		AS BUILT 4/12/88 KRM INDEXED BY CD ACCOUNT NO. 30-575-360-09
APPROVED BY PRINCIPAL ENGINEER <i>[Signature]</i>	APPROVED BY PUBLIC WORKS DIRECTOR <i>[Signature]</i>	DATE 7-22-86	<b>R-2748</b> SHEET 15 OF 17	
DESIGNED BY <i>[Signature]</i>	DRAWN BY <i>[Signature]</i>	CHECKED BY <i>[Signature]</i>	FILE NO.	

INDEXED 1/88 D.M.

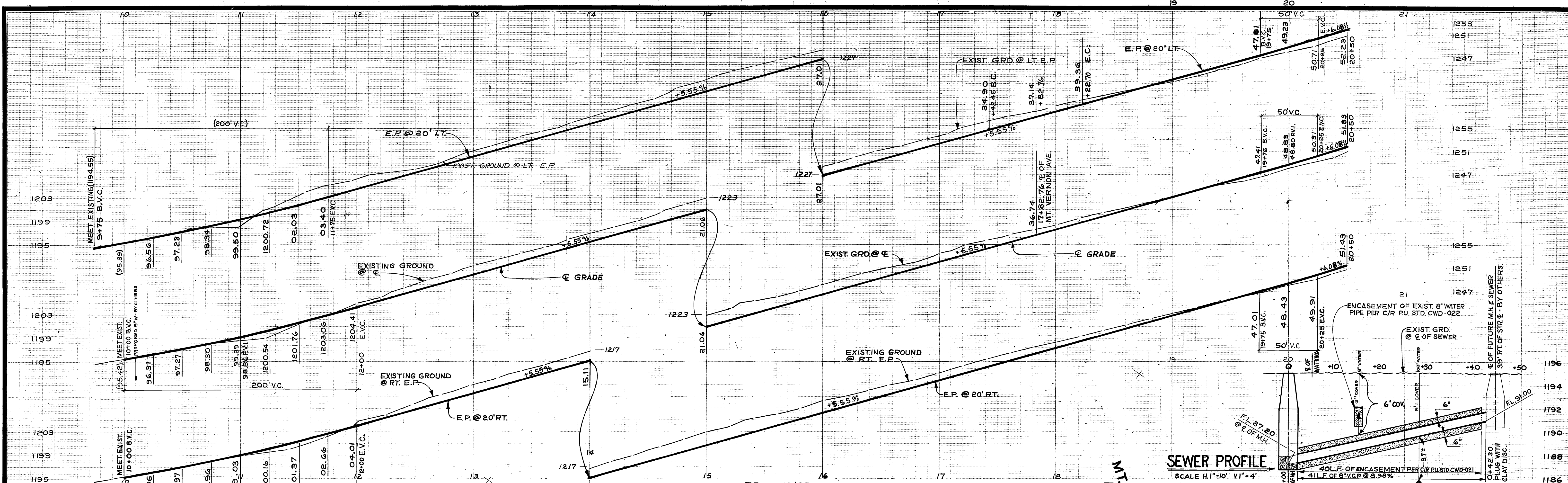


NOTE: STREET WIDTH DIMENSIONS ARE TO C.F. UNLESS OTHERWISE NOTED.

DESIGNED BY <i>J.H.</i> DRAWN BY <i>R.V.Z.</i> CHECKED BY <i>R.M.</i> SURVEYOR <i>J.W.S. 7-21-84</i>		APPROVED BY <i>7/22/86</i> PARK DEPARTMENT TRAFFIC DIVISION CHIEF P.W. INSPECTOR		APPROVED BY <i>William B. Handover</i> PUBLIC WORKS DIRECTOR		AS BUILT 4/12/86 <i>R.M.</i>		INDEXED BY CD ACCOUNT NO. 30-575-360-09	
<b>CITY OF RIVERSIDE</b> PUBLIC WORKS DEPARTMENT				<b>REHABILITATION OF MAJOR CITY STREETS - 1986</b>				<b>R-2748</b>	
WATKINS DRIVE BLAINE TO MT. VERNON				SHEET 16 OF 17		HORIZ. SCALE: 1" = 40' VERT. SCALE: 1" = 1'		FILE NO.	

INDEXED 1/86 D.N.

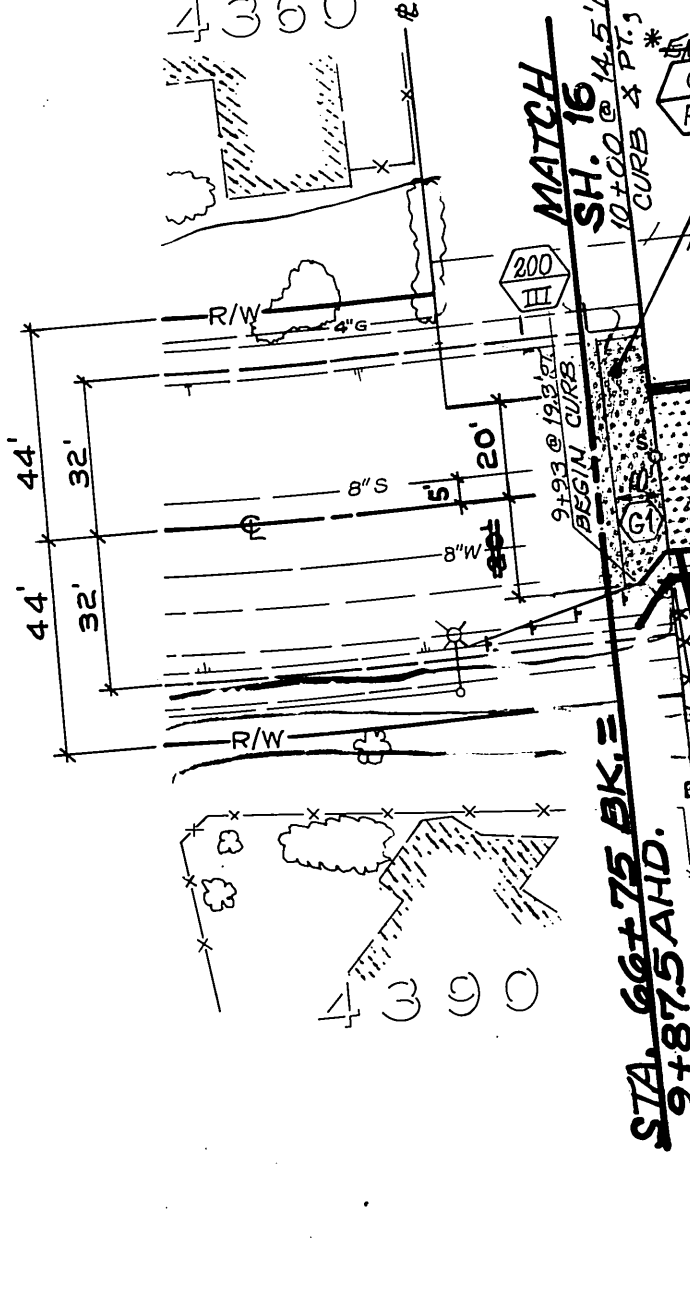
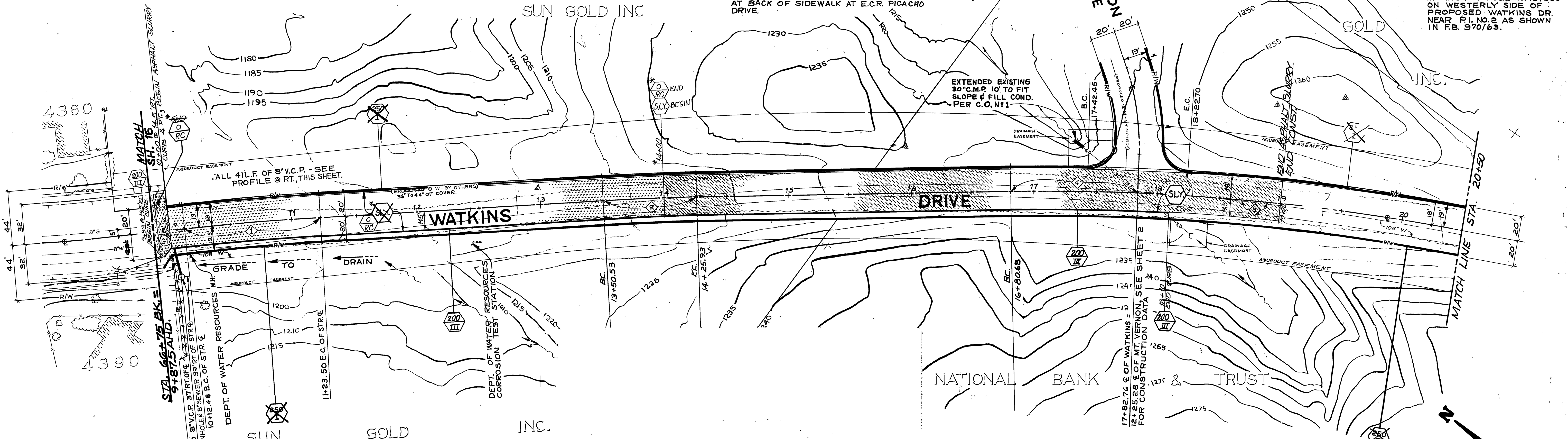




**SEWER PROFILE**  
SCALE H. 1" = 10' V. 1" = 4'

F.B. 973/35  
ELEV. 1191.25  
B.M. FOUND DEPT. OF WATER RESOURCES BRASS DISC SET IN CONC. ON N.W. CORNER OF WATKINS DR. AND PICACHO DR. AT BACK OF SIDEWALK AT E.C.R. PICACHO DRIVE.

F.B. 973/32  
ELEV. 1938.94  
B.M. T.B.M. #1 SET R.R. SPIKE IN ANCHOR POLE NO. 18750J ON WESTERLY SIDE OF PROPOSED WATKINS DR. NEAR P.I. NO. 2 AS SHOWN IN F.B. 970/63.



**STA. 10+00 TO 13+10**

SCALE: HOR. 1" = 8'  
VERT. 1" = 8'

NOTE: DWG. R-2748 IS FOR STREET SLURRY AND CURB CONSTRUCTION (STD. DWG. 200, TYPE III) ON W.L.Y. SIDE ONLY. (DISREGARD ALL OTHER CONST. ITEMS)

**CITY OF RIVERSIDE**  
PUBLIC WORKS DEPARTMENT

REHABILITATION OF MAJOR CITY STREETS - 1986

APPROVED BY: [Signature]  
PRINCIPAL ENGINEER: [Signature]  
TRAFFIC DIVISION: [Signature]  
SUPERVISOR: [Signature]

APPROVED BY: [Signature]  
PUBLIC WORKS DIRECTOR: [Signature]  
DATE: 7-22-86

**R-2748**  
SHEET 17 OF 17