

# RIVERSIDE CITY OF RIVERSIDE CALIFORNIA



## PUBLIC WORKS DEPARTMENT

# SPRUCE STREET WIDENING & REHABILITATION

KANSAS AVE. TO CHICAGO AVE.

### CONSTRUCTION LEGEND



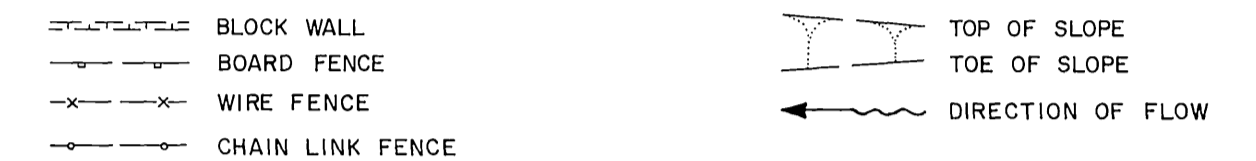
- CONSTRUCT STRUCTURAL SECTION OF 0.05' MIN. OGAC OVER 0.33' DGAC OVER 0.50' C.C. CRUSHED AGGREGATE BASE.
- VARIABLE THICKNESS DGAC OVERLAY (0.03' TO 0.50' MAX. AT OUTSIDE EDGE.)
- 0.05' MIN. OPEN GRADED AC (OGAC) OVER ASPHALT RUBBER STRESS ABSORBING TREATMENT (ARSAT OR RC)
- CONSTRUCT STRUCTURAL SECTION OF: 0.21' DGAC OVER NATIVE SOIL
- REMOVE EXISTING STRUCTURAL SECTION AND REPLACE WITH 0.33' DGAC OVER 0.50' C.C. C.A.B. OR 0.58' FULL DEPTH A.C.

### EXISTING UNDERGROUND & TOPOGRAPHY LEGEND

#### EXISTING UNDERGROUND UTILITIES:

SANITARY SEWER	8" S	TELEPHONE CONDUIT	T
WATER LINE	6" W	ELECTRICAL CONDUIT	E
STORM DRAIN	24" S.D.	ELECTROLIER LIGHTING CONDUIT	ELC
GAS LINE	3" G	TRAFFIC SIGNAL	SIG
IRRIGATION LINE	20" IRR	FIRE ALARM	F
ABANDONED UTILITY	6" (ABAND)		

#### EXISTING TOPOGRAPHY:



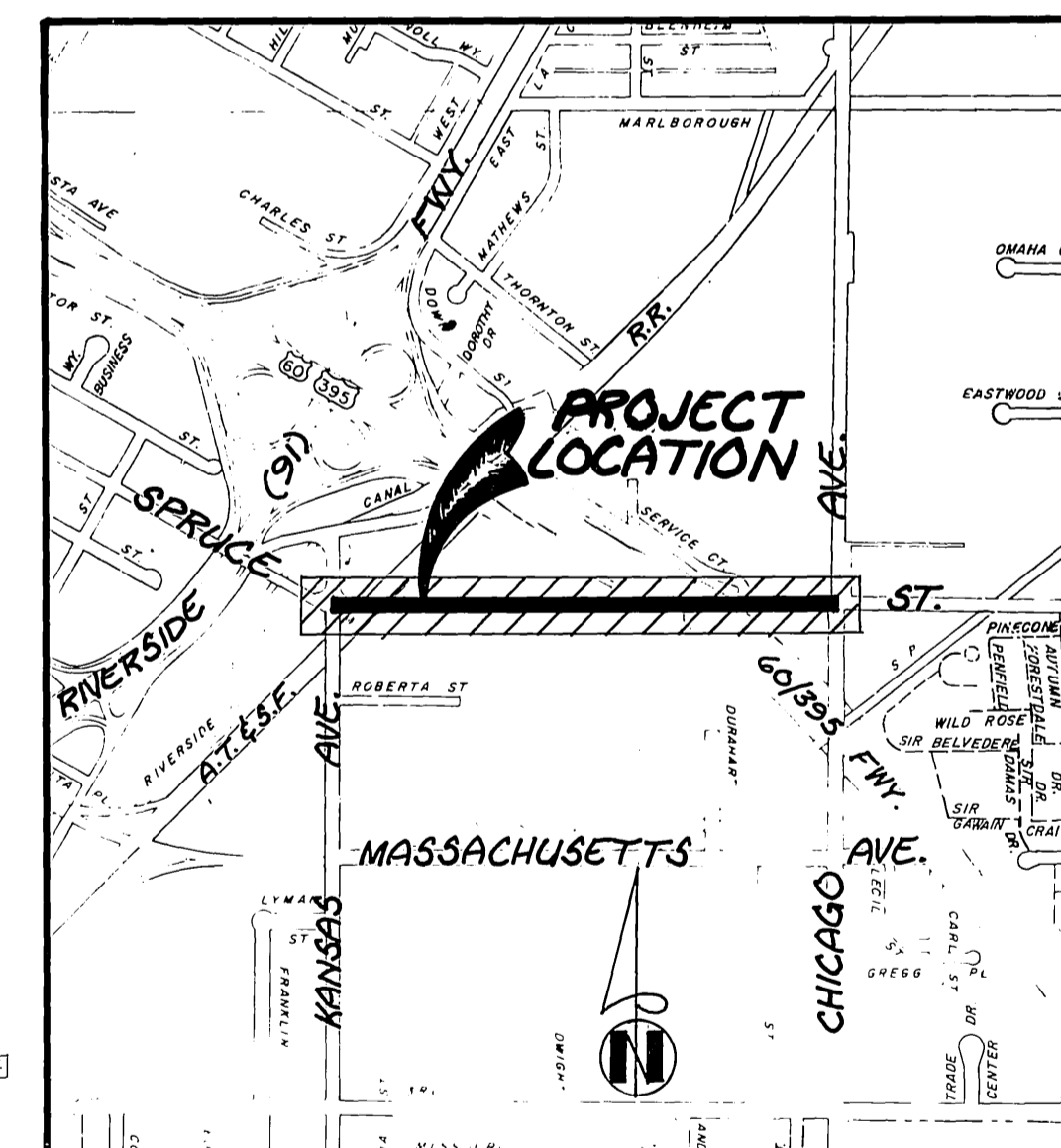
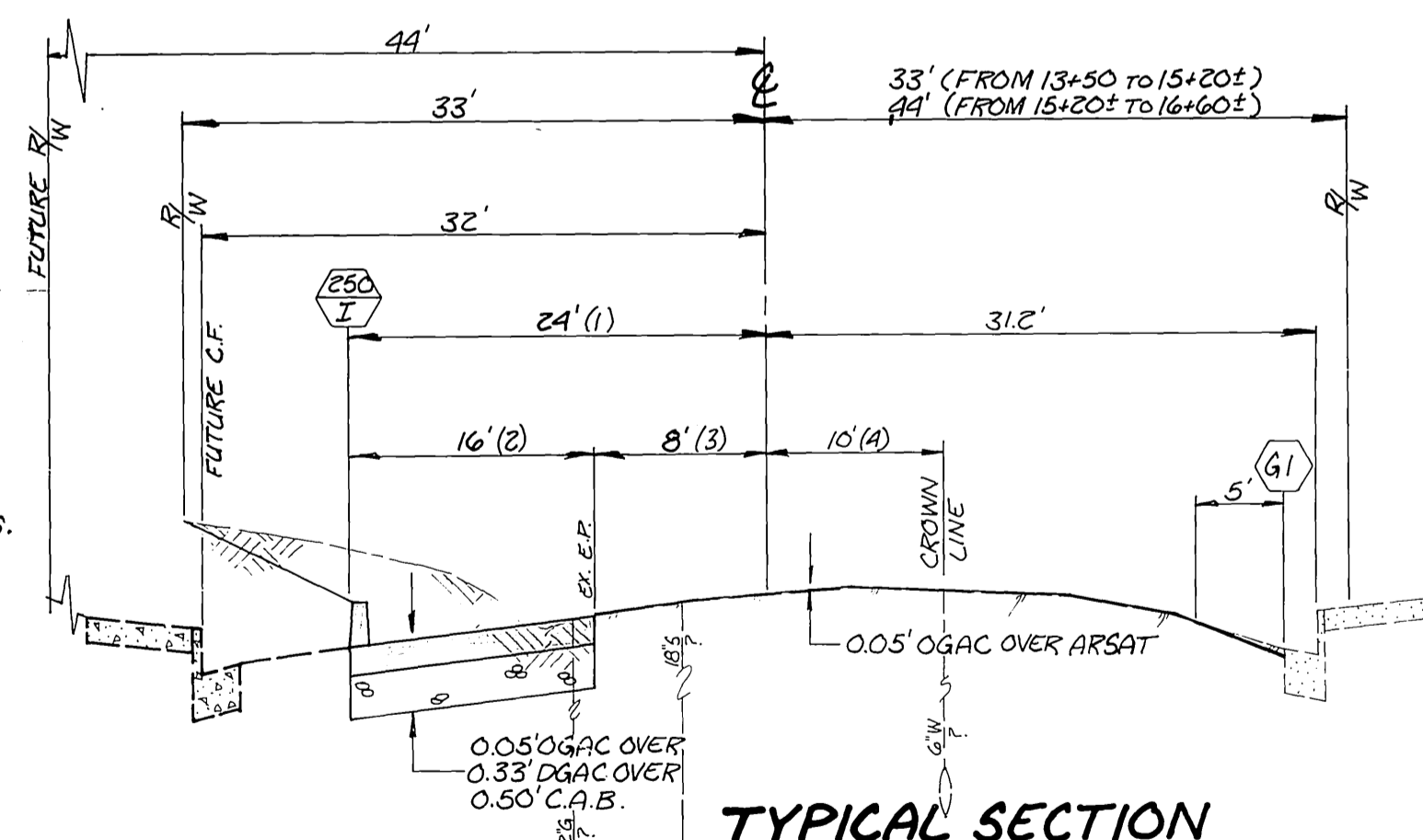
### SPECIFIC CONSTRUCTION NOTES

NUMBERS ABOVE 100 IN A HEXAGON ON THE PLAN REFER TO THE RESPECTIVE STANDARD DRAWING AND SHALL BE CONSTRUCTED ACCORDINGLY, UNLESS MODIFICATIONS ARE NOTED ON THE PLAN OR COVER SHEET BELOW. ANY NUMBER SHOWN BELOW THE STANDARD DRAWING NUMBER INDICATES THE SPECIFIC ALTERNATE TO BE CONSTRUCTED.

- PROTECT IN PLACE
- ADJUST M.H., WATER METER/VALVE BOX FRAME AND COVER TO GRADE.
- GRIND EX. AC 0.05' BELOW GUTTER LIP OR OUTER EDGE "DAY-LIGHTING" IN 5' EXCEPT AS SHOWN ON PLANS.
- TO BE RELOCATED BY CITY OF RIVERSIDE PUBLIC UTILITIES, WATER DIVISION.
- REMOVE ENTIRE TREE: CLASS II - 18" TO 36" DIA.
- TRAFFIC DETECTOR LOOP INSTALLATION
- NUMBER OF LOOPS

### GENERAL CONSTRUCTION NOTES

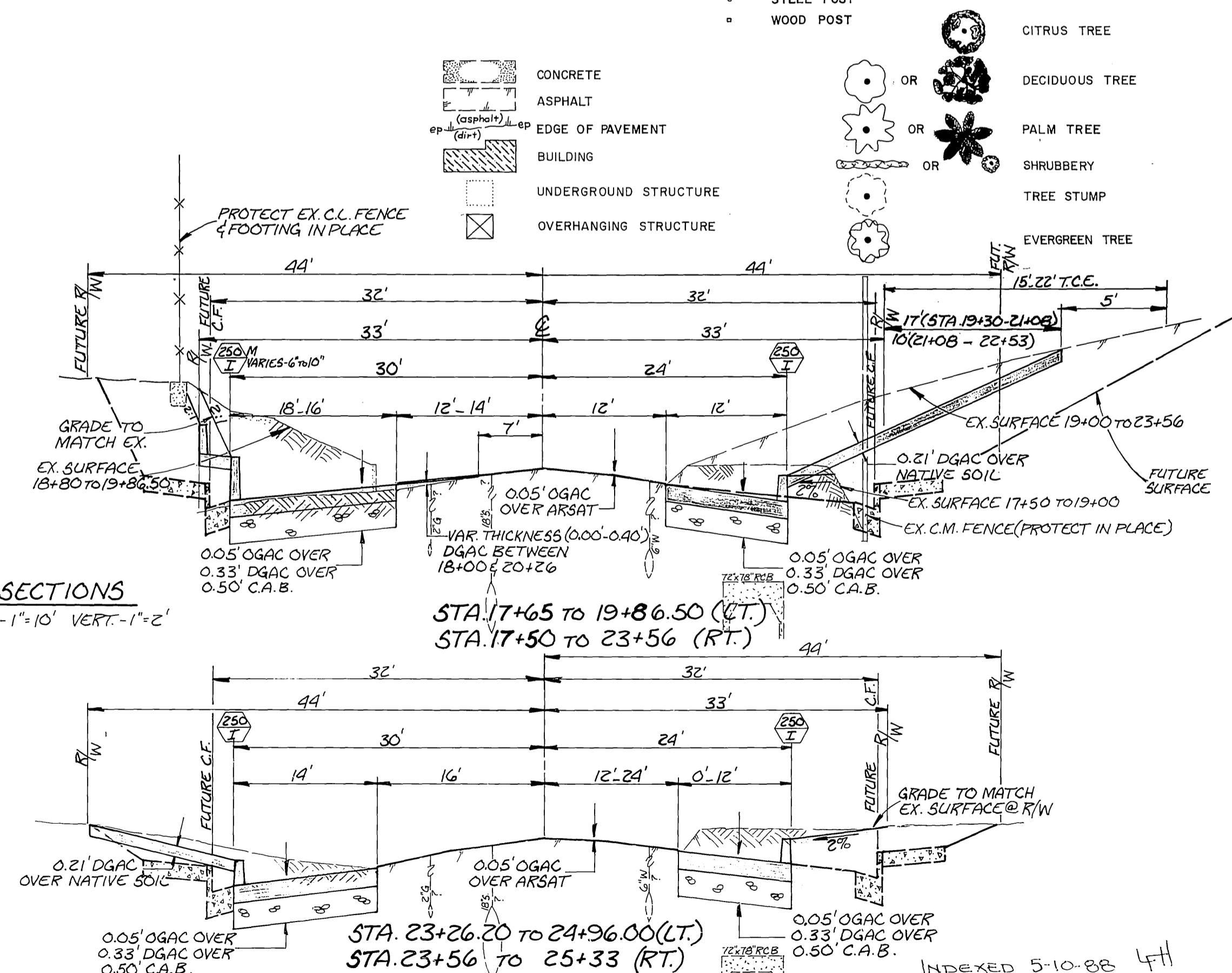
- EXISTING UTILITIES SHOWN ON THIS PLAN ARE PLOTTED FROM UTILITY RECORDS. THE CONTRACTOR IS REQUIRED TO TAKE DUE PRECAUTIONARY MEASURES TO LOCATE & PROTECT ALL UTILITIES WHETHER OR NOT SHOWN ON THIS PLAN. IF THE COVER OF A UTILITY IS KNOWN, IT IS SHOWN IN THE PROFILE. UTILITIES SHOWN IN THE PROFILE AS - - - - - INDICATES THAT THE COVER IS UNKNOWN, BUT THE UTILITY IS NOT EXPECTED TO CONFLICT WITH THE PROPOSED IMPROVEMENTS.
- ALL ELEVATIONS SHOWN ON THE PLAN SHALL BE STAKED IN THE FIELD. PROFILE REPRESENTS FINISHED DGAC SURFACE.
- RIGHTS OF ENTRY HAVE BEEN OBTAINED FOR WORK SHOWN OUTSIDE OF CITY RIGHT OF WAY.
- CONFLICTING UTILITIES SHOWN WITHIN CONSTRUCTION AREA WILL BE RELOCATED PRIOR TO CONSTRUCTION.
- PRIME CONTRACTORS BIDDING THIS WORK SHALL HAVE A CLASS A OR
- TRANSVERSE AND LONGITUDINAL CRACKS 3/8" AND LARGER SHALL BE FILLED WITH A RUBBERIZED ASPHALT MATERIAL PRIOR TO OVERLAY OR APPLICATION OF THE RUBBERIZED ASPHALT STRESS ABSORBING TREATMENT (ARSAT). WHEN THE PAVEMENT IS TO BE OVERLAIN WITH OPEN GRADED AC, ALL CRACKS SHALL BE FILLED WITH A RUBBERIZED ASPHALT MATERIAL (SEE SPECIAL PROVISIONS).
- THE RIDGE PRODUCED BY THE EDGE OF THE OPEN GRADED AC OVERLAY SHALL BE MINIMIZED. FEATHER THE OPEN GRADED AC AT INTERSECTIONS TO A MINIMUM THICKNESS (0.03') AT 5' BEYOND THE INDICATED EDGE OF THE OVERLAY.
- THE SEAM BETWEEN PASSES OF THE OPEN GRADED AC OVERLAY SHALL COINCIDE, AS CLOSELY AS POSSIBLE, WITH THE LANE LINES.
- PULL BOXES FOR SPlicing TRAFFIC LOOP DETECTOR CONDUCTORS AND LEAD-IN CABLE ARE NORMALLY ADJACENT TO DETECTORS, UNLESS OTHERWISE SHOWN ON PLAN.
- MANHOLES & VALVES WITHIN THE GRINDING LIMITS SHALL NOT BE ADJUSTED TO GRADE. INSTEAD, ENOUGH GRINDING (OR PAVEMENT REMOVAL BY OTHER MEANS) SHALL BE DONE TO PROVIDE A SMOOTH FINISHED SURFACE TRANSITION AROUND THE COMPLETE CIRCUMFERENCE OF THE STRUCTURE AS NOTED PER PLAN.
- RESURFACING LIMITS SHOWN AT INTERSECTIONS ARE NOT ABSOLUTE. THE INSPECTOR MAY REQUEST GRINDING & PAVING INTO SIDE STREETS TO IMPROVE RIDABILITY.



### PROJECT LOCATION PLAN



TYPICAL SECTIONS  
SCALE: HORIZ. 1"=10' VERT. 1"=2'



**Underground Service Alert**  
Call TOLL FREE  
1-800-422-4133  
TWO WORKING DAYS BEFORE YOU DIG.

SCALE 1"=1000'

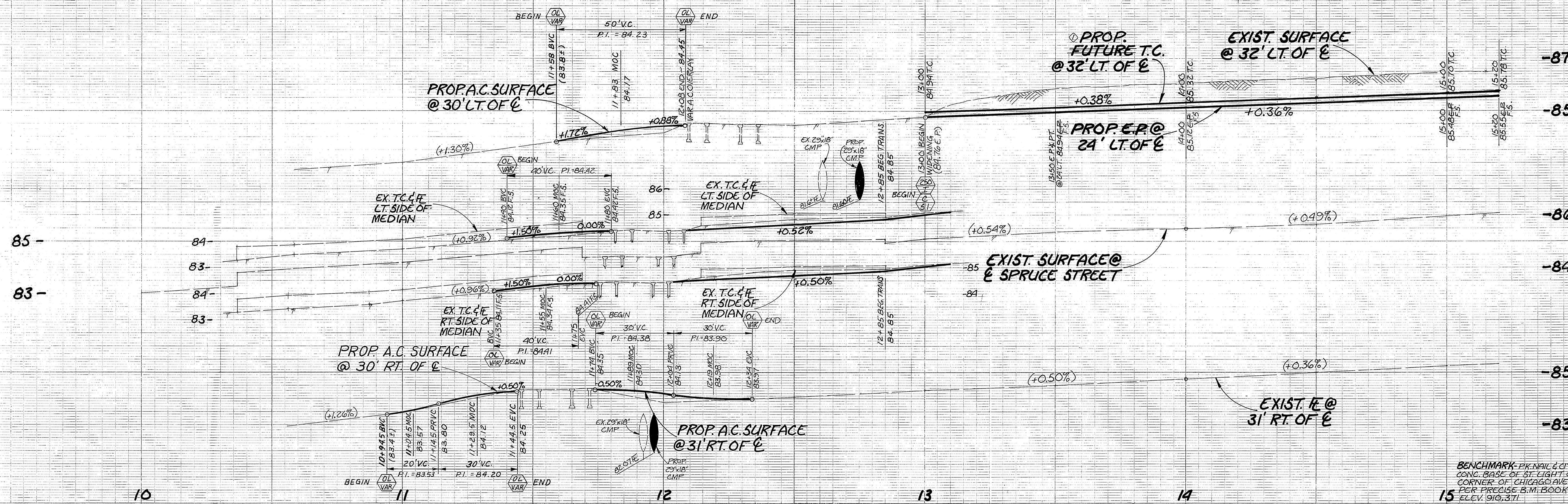
ENGINEER IN RESPONSIBLE CHARGE  
**Ronald C. Mueller**  
RONALD C. MUELLER  
RCE 29910 exp. 03-31-91  
DATE 1-8-88

**CITY OF RIVERSIDE**  
PUBLIC WORKS DEPARTMENT  
APPROVED BY: **Ronald C. Mueller**  
PRINCIPAL ENGINEER  
TRAFFIC DIVISION  
DATE 1-8-88

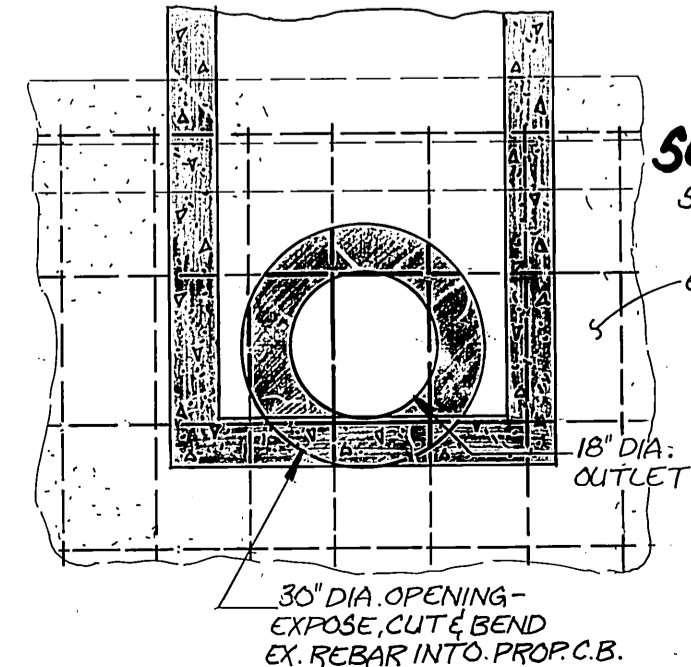
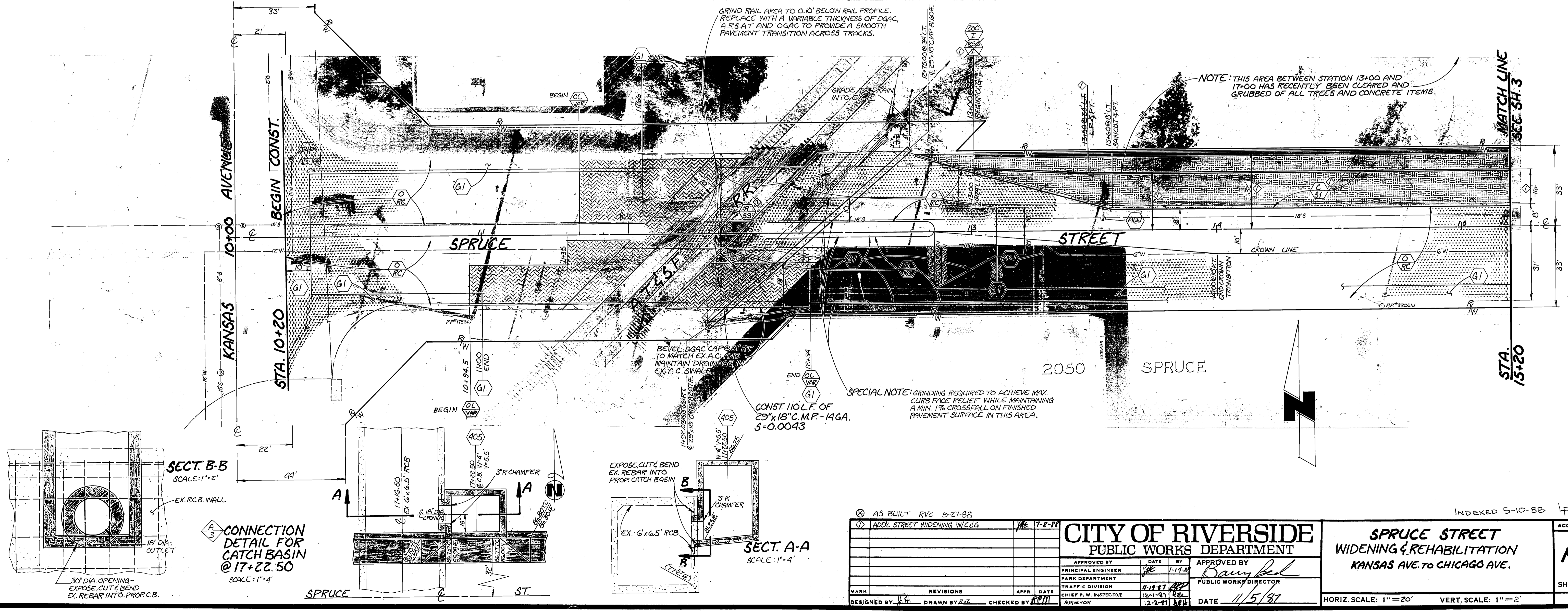
**SPRUCE STREET WIDENING & REHABILITATION**  
KANSAS AVE. TO CHICAGO AVE.  
DRAWING NUMBER **R-2750**  
SHEET **1** OF **6**

INDEXED 5-10-88 4H

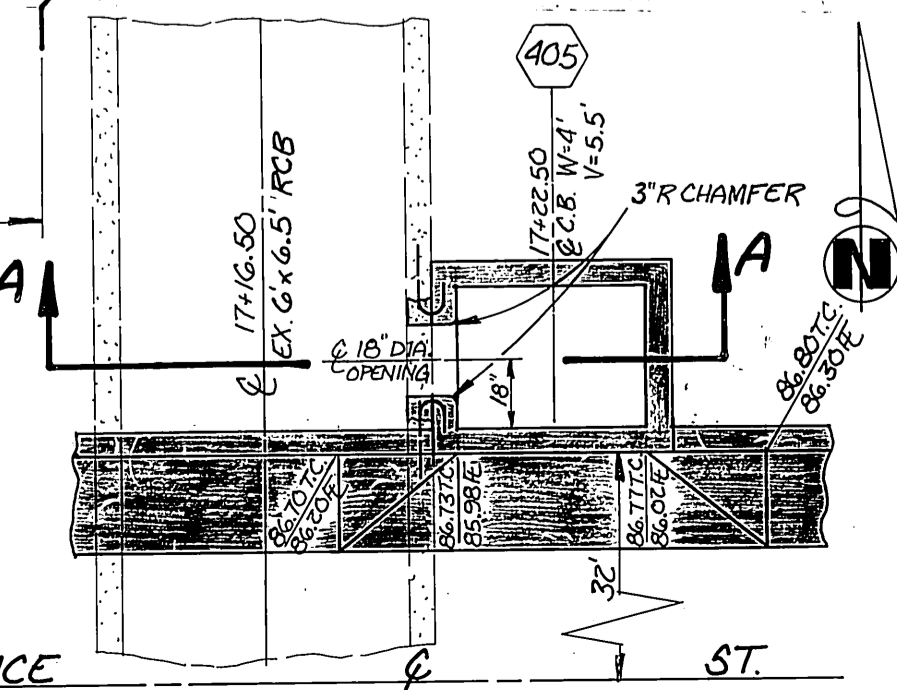
Fig 2.5-88



BENCHMARK: PK NAIL & CITY ENG. TAG IN CONC. BASE OF ST. LIGHT ON THE N.E. CORNER OF CHICAGO AVE. & SPRUCE ST. PER PRECISE B.M. BOOK: 177-E. ELEV. 916.371



CONNECTION DETAIL FOR CATCH BASIN @ 17+22.50 SCALE: 1"=4'



SECTION A-A SCALE: 1"=4'

AS BUILT RVS 9-27-88

ADDL STREET WIDENING W/C/G 17-8-88

MARK	REVISIONS	APPR. DATE	DATE

DESIGNED BY: [Signature] DRAWN BY: [Signature] CHECKED BY: [Signature] SURVEYOR

**CITY OF RIVERSIDE**  
PUBLIC WORKS DEPARTMENT

APPROVED BY: [Signature] DATE: 11-19-88  
PRINCIPAL ENGINEER

TRAFFIC DIVISION: [Signature] DATE: 12-1-87  
CHIEF P. W. INSPECTOR

DATE: 11/5/87

INDEXED 5-10-88 LH

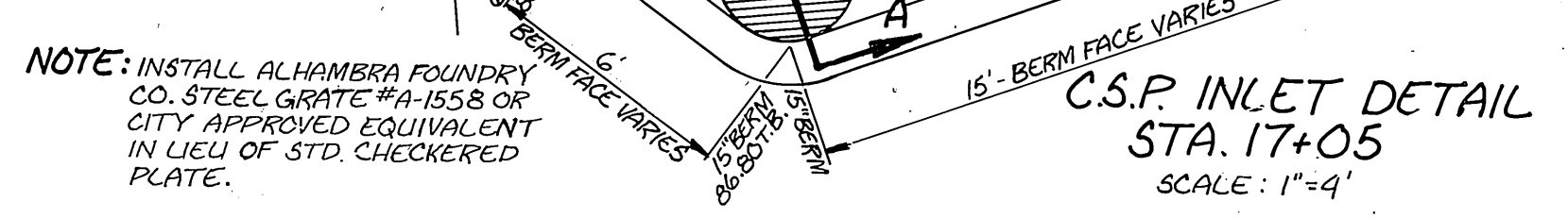
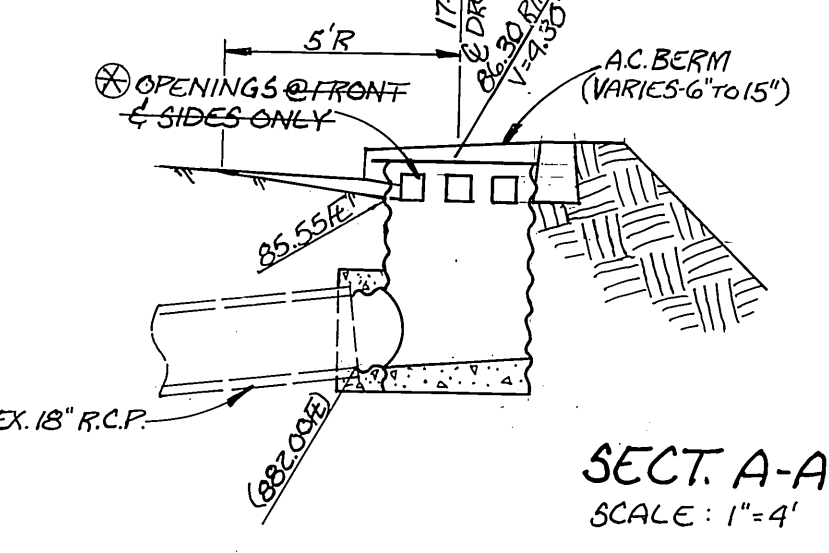
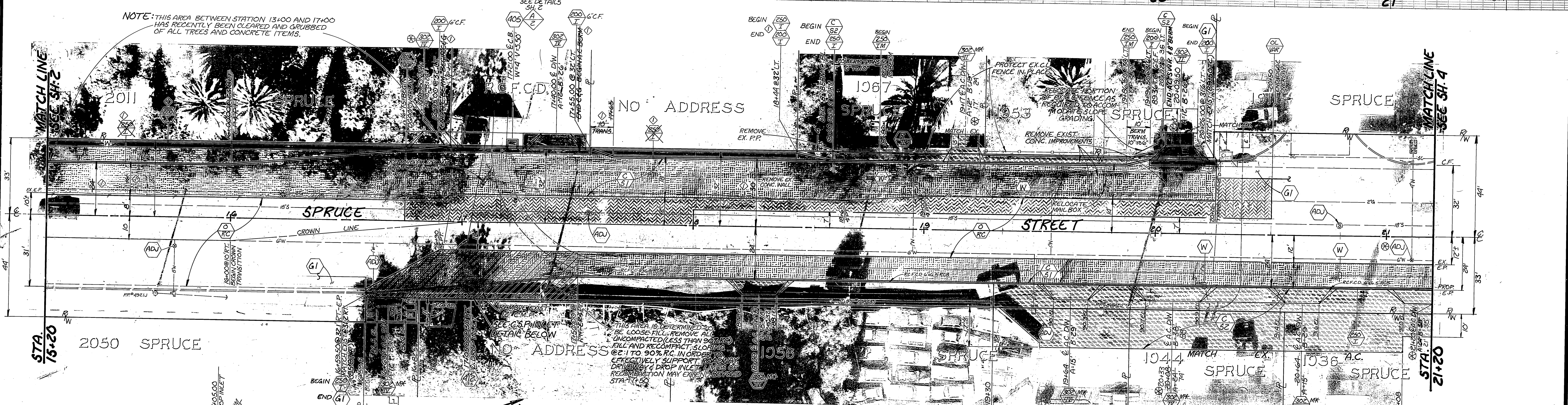
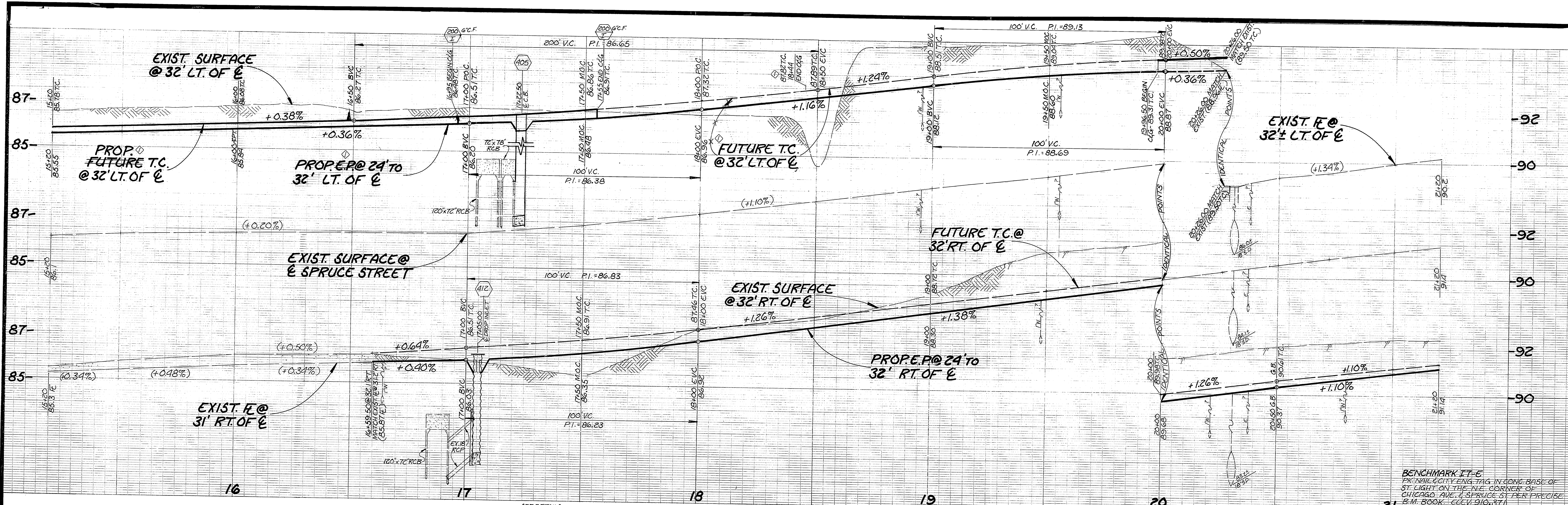
**SPRUCE STREET**  
WIDENING & REHABILITATION  
KANSAS AVE. TO CHICAGO AVE.

HORIZ. SCALE: 1"=20' VERT. SCALE: 1"=2'

ACCOUNT NO. 30-575-328-07

**R-2750**

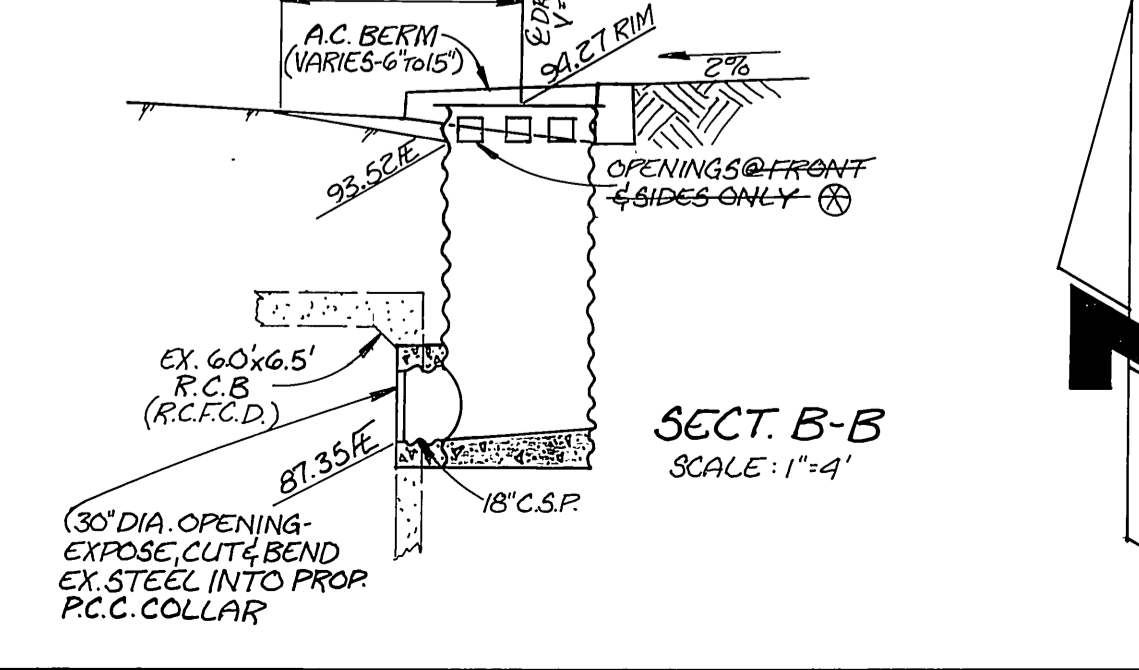
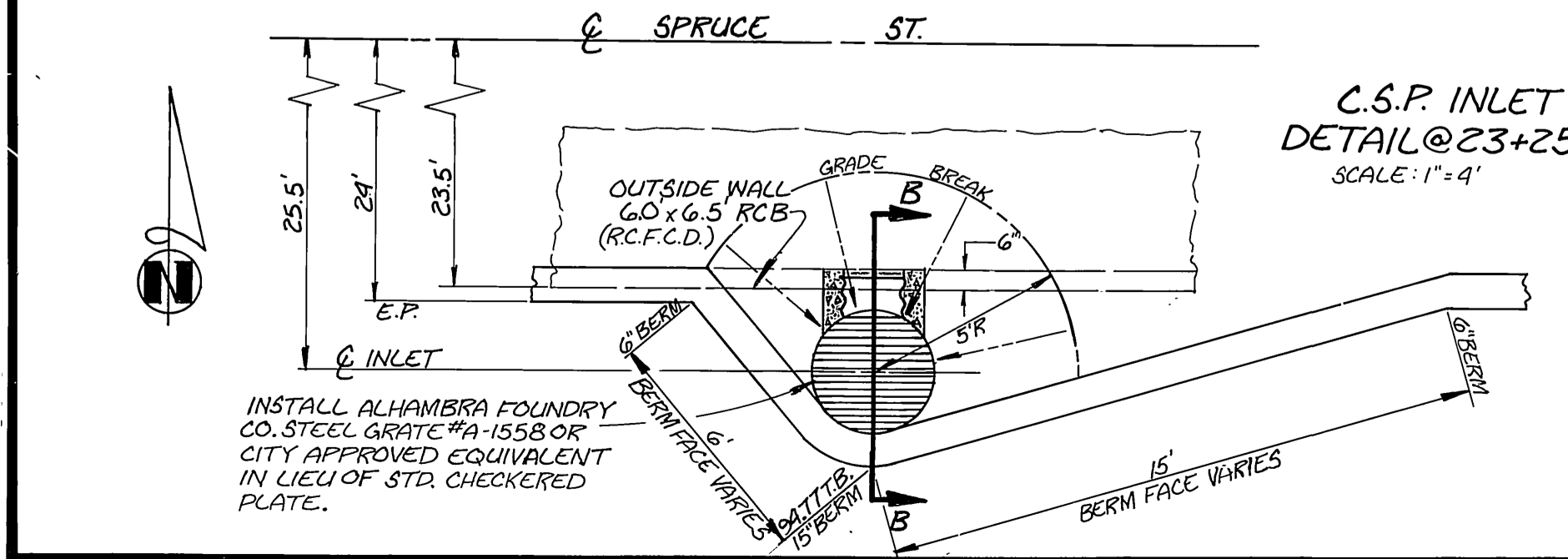
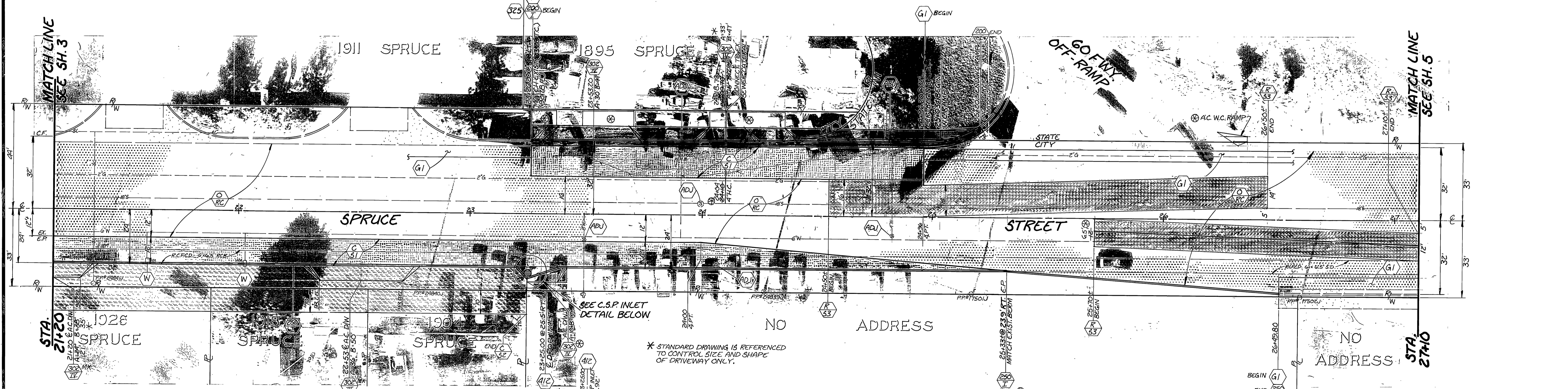
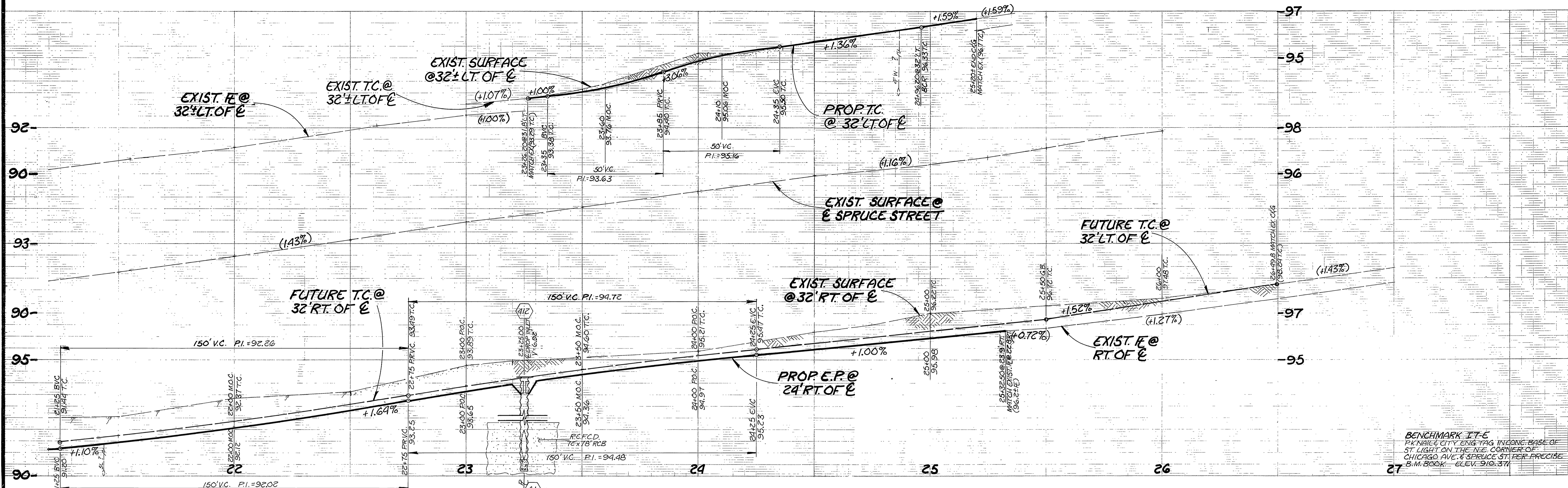
SHEET 2 OF 6



\* STANDARD DRAWING IS REFERENCED TO CONTROL SIZE AND SHAPE OF DRIVEWAY ONLY.

AS BUILT RYZ 9-27-88  
ADD'L STREET WIDENING W/CGG 11-5-87

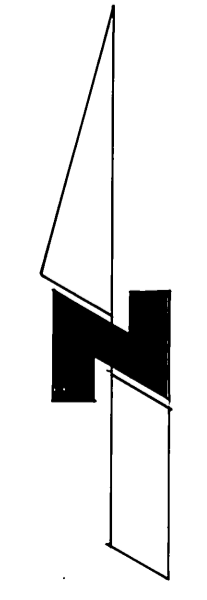
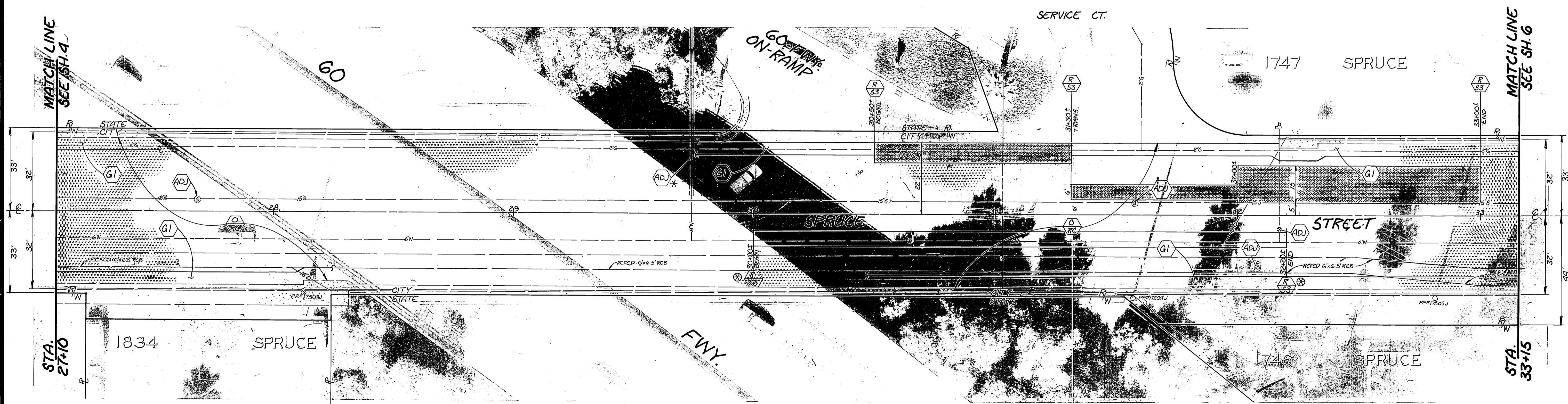
<b>CITY OF RIVERSIDE</b> PUBLIC WORKS DEPARTMENT		INDEXED 5-10-88 4H	
APPROVED BY PRINCIPAL ENGINEER PARK DEPARTMENT TRAFFIC DIVISION CHIEF P. W. INSPECTOR SURVEYOR	DATE 11-5-87 11-4-87 12-1-87 12-2-87	APPROVED BY PUBLIC WORKS DIRECTOR	DATE 11/5/87
DESIGNED BY DRAWN BY RYZ CHECKED BY	APPR. DATE 11-5-87	<b>SPRUCE STREET</b> WIDENING & REHABILITATION KANSAS AVE. TO CHICAGO AVE.	
ACCOUNT NO. 30-575-328-07		<b>R-2750</b>	
SHEET 3 OF 6		HORIZ. SCALE: 1"=20' VERT. SCALE: 1"=2'	



AS BUILT RYZ 9-27-88

<b>CITY OF RIVERSIDE</b> PUBLIC WORKS DEPARTMENT		INDEXED 5-10-88 LH	
APPROVED BY PRINCIPAL ENGINEER PARK DEPARTMENT TRAFFIC DIVISION CHIEF P.W. INSPECTOR SURVEYOR	DATE 11-5-87 11-1-87 12-1-81 11-2-77	APPROVED BY PUBLIC WORKS DIRECTOR	DATE 11/5/87
DESIGNED BY: J.H. DRAWN BY: SJZ CHECKED BY: PCM		<b>SPRUCE STREET</b> WIDENING & REHABILITATION KANSAS AVE. TO CHICAGO AVE.	
HORIZ. SCALE: 1"=20' VERT. SCALE: 1"=2'		ACCOUNT NO. 30-575-326-07 <b>R-2750</b> SHEET 4 OF 6	

BENCHMARK I.T.E.  
 PK. NAIL & CITY ENG. TAG IN CONC. BASE  
 OF ST. LIGHT ON THE N.E. CORNER OF  
 CHICAGO AVE. & SPRUCE ST. PER PRECISE  
 B.M. BOOK ECEV. 310.371



AS BUILT RVZ 9-26-88

INDEXED 5-10-88 FH

<b>CITY OF RIVERSIDE</b>			
PUBLIC WORKS DEPARTMENT			
APPROVED BY	DATE	BY	APPROVED BY
PRINCIPAL ENGINEER	1-18-88		<i>Barry Paul</i>
PARK DEPARTMENT			PUBLIC WORKS DIRECTOR
TRAFFIC DIVISION	11-17-87		
CHIEF P.W. INSPECTOR	12-1-87		
SURVEYOR	12-2-87		
DESIGNED BY	DRAWN BY	CHECKED BY	DATE
			2/8/88

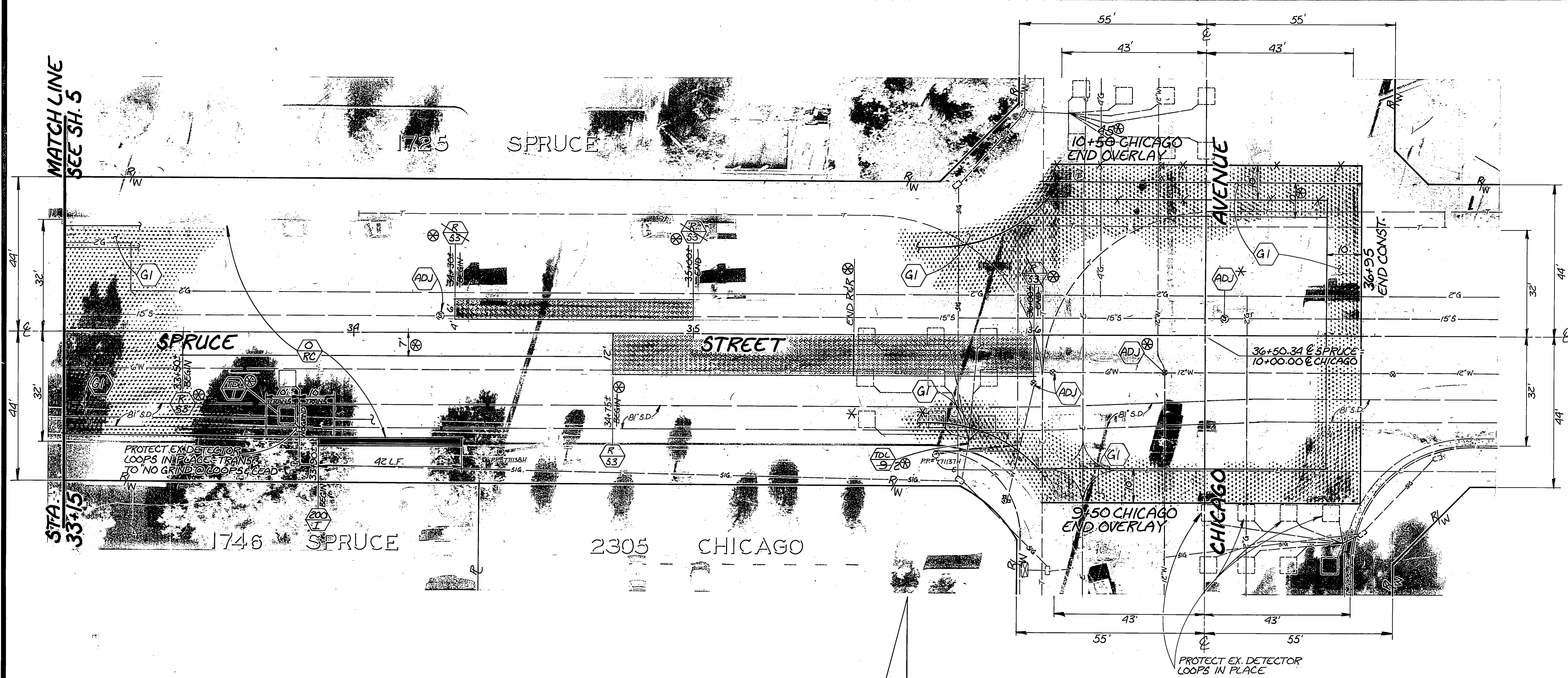
**SPRUCE STREET**  
 WIDENING & REHABILITATION  
 KANSAS AVE. TO CHICAGO AVE.

ACCOUNT NO. 30-575-328-07  
**R-2750**  
 SHEET 5 OF 6

HORIZ. SCALE: 1" = 20'  
 VERT. SCALE: 1" = 4'

2-5-88

BENCHMARK I-T-C  
 P.K. NAIL & CITY ENG. TAG IN CONC. BASE OF  
 ST. LIGHT ON THE N.E. CORNER OF CHICAGO  
 AVE. & SPRUCE ST. PER PRECISE B.M. BOOK  
 ELEV. 910.371



MATCH LINE  
 SEE SH. 5

STA. 33+15

AS BUILT RVZ 9-26-88

INDEXED 5-10-88 LPH

ACCOUNT NO. 30-575-328-07

<b>CITY OF RIVERSIDE</b> PUBLIC WORKS DEPARTMENT			
APPROVED BY	DATE	BY	APPROVED BY
PRINCIPAL ENGINEER	1-14-88	WJZ	<i>Barry Bol</i>
PARK DEPARTMENT			PUBLIC WORKS DIRECTOR
TRAFFIC DIVISION	11-14-87	WJZ	
CHIEF P.W. INSPECTOR	12-1-87	WJZ	
SURVEYOR	12-2-87	WJZ	
DESIGNED BY	REVISIONS	APPR. DATE	DATE
1-1			2/8/88
DRAWN BY RVZ	CHECKED BY PCM		

**SPRUCE STREET**  
 WIDENING & REHABILITATION  
 KANSAS AVE. TO CHICAGO AVE.

**R-2750**  
 SHEET 6 OF 6

HORIZ. SCALE: 1"=20'    VERT. SCALE: 1"=10'

2-5-88