

760 ±

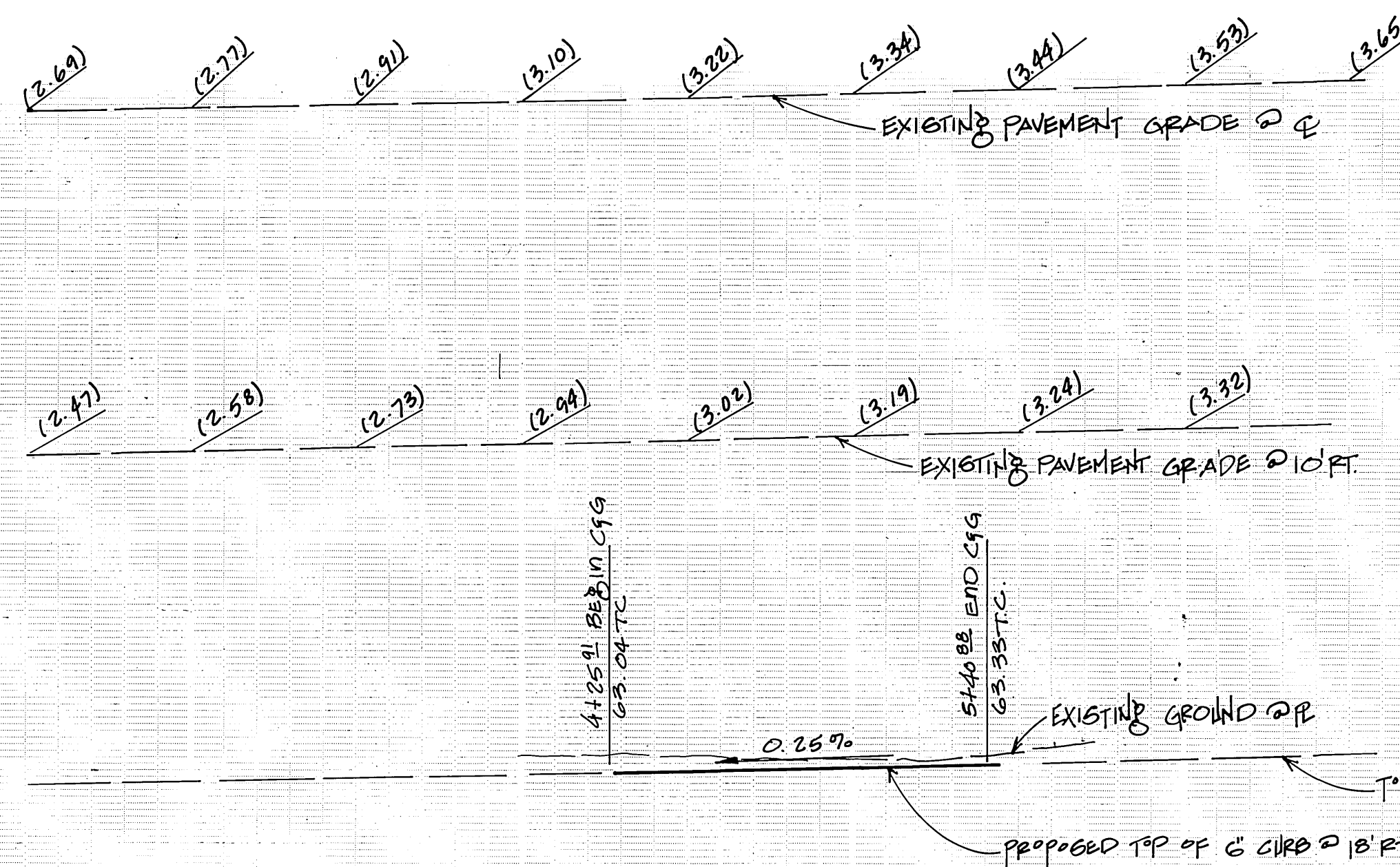
760 ±

760 10' RT.

760 10' RT.

760 18' RT.

760 18' RT.



PROFILE
 SCALES: HORIZ. 1"=40'
 VERT. 1"=4'

BENCH MARK: FB-F (RESET) P.K. NAIL AND CITY ENGR. TAG IN CONC. BASE OF STREET LITE ON THE MOST ELEV. COR. OF MAGNOLIA AVE. AT INTERSECTION OF 5th ST.
 ELEV. = 769.129

GENERAL NOTES

- IT SHALL BE THE RESPONSIBILITY OF THE CONTRACTOR TO CLEAR THE RIGHT OF WAY IN ACCORDANCE WITH THE PROVISIONS OF LAW AS IT AFFECTS EACH UTILITY INCLUDING IRRIGATION LINES AND APPURTENANCES AND AT NO COST TO THE CITY.
- CONSTRUCTION SHALL BE IN ACCORDANCE WITH THE CITY OF RIVERSIDE DEPARTMENT OF PUBLIC WORKS, STANDARD DRAWINGS, STANDARD DRAWING NO. 10 AND THE STANDARD SPECIFICATIONS FOR PUBLIC WORKS CONSTRUCTION, CURRENT EDITION.
- TRIM EDGE OF EXISTING PAVEMENT WHERE NEW PAVEMENT JOINS TO A SMOOTH, STRAIGHT LINE. CONSTRUCT MATCH-UP PAVING AS SHOWN ON PLAN AND OVERLAY PAVING AS DIRECTED IN THE FIELD TO PRODUCE A SMOOTH SECTION.
- CONSTRUCT DRIVEWAY APPROACHES PER STD. DWG. 302. EXACT SIZE AND LOCATION TO BE DETERMINED AT THE TIME OF CONSTRUCTION AS APPROVED BY THE TRAFFIC ENGINEER.
- CURB AND GUTTER SHALL BE STAKED WITH 3' OFFSETS AT 12.5' INTERVALS.
- THE PRIVATE ENGINEER SIGNING THESE PLANS IS RESPONSIBLE FOR ASSURING THE ACCURACY AND ACCEPTABILITY OF THE WORK HEREON. IN THE EVENT OF DISCREPANCIES ARISING DURING CONSTRUCTION, THE PRIVATE ENGINEER SHALL BE RESPONSIBLE FOR DETERMINING AN ACCEPTABLE SOLUTION AND REVISING THE PLANS FOR APPROVAL BY THE CITY.
- THE PRIVATE ENGINEER PREPARING THESE PLANS SHALL BE RESPONSIBLE FOR PRESERVING OR RE-ESTABLISHING AND REFERENCING SURVEY MONUMENTS DESTROYED, DISTURBED OR BURIED AS A RESULT OF CONSTRUCTION SHOWN HEREON.
- THE DEVELOPER SHALL GIVE THE CITY WATER DIVISION FIVE (5) WORKING DAYS WRITTEN NOTICE PRIOR TO THE START OF CONSTRUCTION AND TO ALLOW THE CITY TEN (10) WORKING DAYS FOR COMPLETION OF WORK. (787-7611)

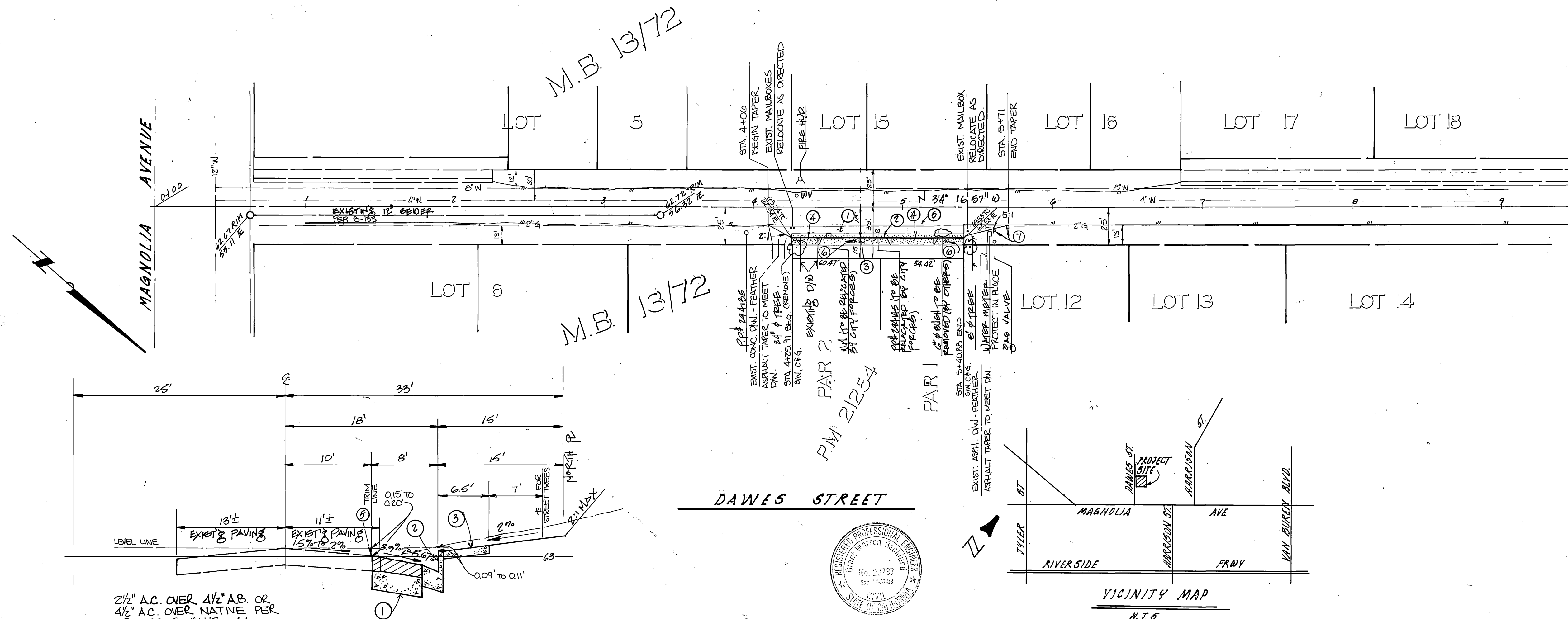
CONSTRUCTION NOTES

- CONSTRUCT A.C. OVER A.B. PER TYPICAL SECTION.
- CONSTRUCT CURB & GUTTER PER CITY OF RIVERSIDE STANDARD DRAWING NO. 200, TYPE 1, 6" CURB FACE.
- CONSTRUCT CURB SIDEWALK PER CITY STD. 325.
- CONSTRUCT DRIVEWAY PER GENERAL NOTE NO. 4.
- SAWCUT PAVEMENT 10' RIGHT OF ST. CENTER LINE FOR MATCH UP PAVING.
- PLANT STREET TREES PER PARKS AND RECREATIONS STDS.
- INSTALL TYPE "F-1" FLEXIBLE DELINEATORS AT 20' C.C.

GENERAL NOTES FOR TREE PLANTING

- ALL RELATED WORK SHALL CONFORM TO THE CITY OF RIVERSIDE, PARK AND RECREATION DEPARTMENT STANDARDS.
- CONTACT THE PARK PROJECTS INSPECTOR A MINIMUM OF 48 HOURS IN ADVANCE AT 787-7223 TO SCHEDULE INSPECTIONS. INSPECTIONS SHALL BE REQUIRED:
 - WHEN PLANT LOCATIONS HAVE BEEN SPOTTED IN THE FIELD PRIOR TO DIGGING PLANT PITS.
 - WHILE DIGGING PLANT PITS AND PLANTING/RELOCATING TREES.
 - AFTER PLANTING AND ALL OTHER INDICATED OR SPECIFIED WORK HAS BEEN COMPLETED FOR START OF MAINTENANCE.
 - AT END OF MAINTENANCE/FINAL ACCEPTANCE (CONTRACTOR/DEVELOPER WILL BE RELEASED FROM MAINTENANCE ONLY UPON RECEIPT OF WRITTEN NOTIFICATION FROM THE CITY THAT THE PARK AND RECREATION DEPARTMENT IS ASSUMING MAINTENANCE RESPONSIBILITIES).
- THE CONTRACTOR/DEVELOPER SHALL MAINTAIN ALL PLANTINGS FOR A MINIMUM PERIOD OF ONE (1) YEAR.
- STREET TREE PLANTING SHALL BE AS FOLLOWS:

STREET NAME	BOTANICAL NAME	COMMON NAME	MIN. SIZE	APPROX. NO. SPACING REQ.
DAWES ST.	FRAXINUS VELUTINA/MODESTO	'MODESTO' ASH	15 GAL.	AS SHOWN 2
- PARK AND RECREATION DEPARTMENT AND PUBLIC WORKS DEPARTMENT PERMITS ARE REQUIRED PRIOR TO COMMENCEMENT OF TREE RELOCATION AND/OR REMOVAL WORK. FOR ALL TREES WITHIN THE ULTIMATE PAVEMENT AREA, BACKFILL OF ALL HOLES IS TO BE INSPECTED BY THE CITY FOR PROPER COMPACTION.



2 1/2" AC. OVER 1 1/2" AB. OR
 4 1/2" AC. OVER NATIVE PER
 SR-1293 R VALUE = 44

TYPICAL SECTION DAWES STREET

STA. 4+25.11 TO STA. 5+40.88

SOUTHERN CALIF. GAS CO.
 OR M. Swan
 APPROVED

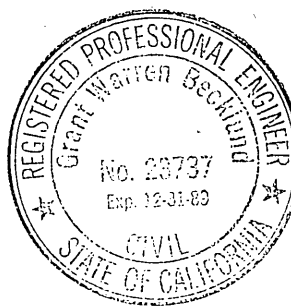
7-3-86
 DATED

CITY OF RIVERSIDE ELECTRICAL DEPT.
 John Johnson
 APPROVED BY

7-29-86

CITY OF RIVERSIDE WATER DEPT.
 David V. Garcia
 APPROVED BY

11-25-86
 DATE



GABEL, COOK & BECKLUND
 Environmental • Hydrology • Planning
 Civil Engineering • Surveying • Structures
 647 North Main Street, Suite 1-8, Riverside, Calif. 92501
 Telephone (714) 788-8092

APPROVED BY: Gabel, Cook & Becklund
 R.C.E. No. 23,737
 24 NOV 1986
 DATE

DESIGNED BY: CAC
 DRAWN BY: PH
 CHECKED BY: NOG

APPROVED BY: William D. Gardner
 DATE: 12-4-86
 PUBLIC WORKS DIRECTOR

DAWES STREET (NORTH SIDE)
 PARCEL MAP 21254
 R-16-856

INDEXED BY CD.

R-2784

WD 85-619