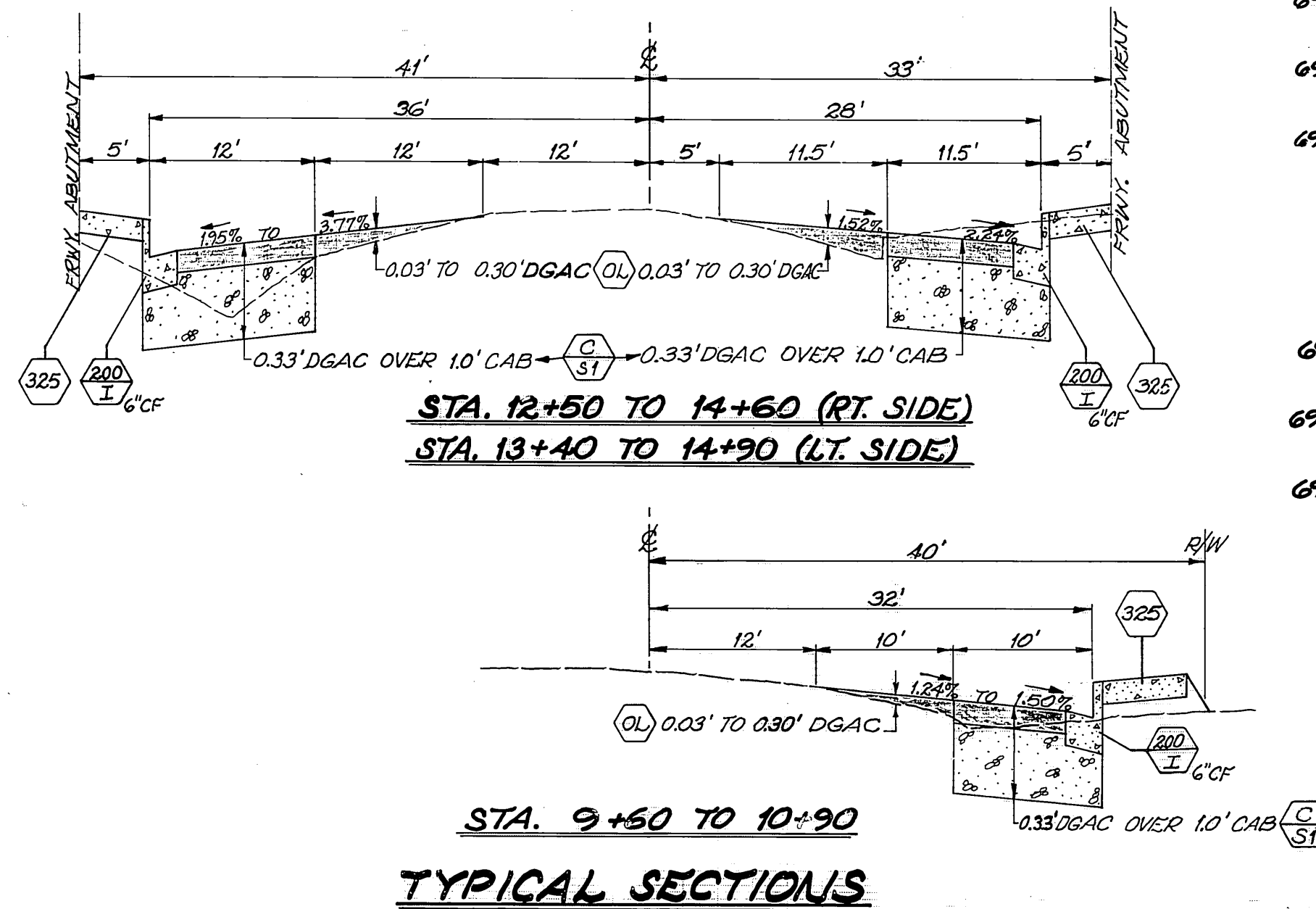
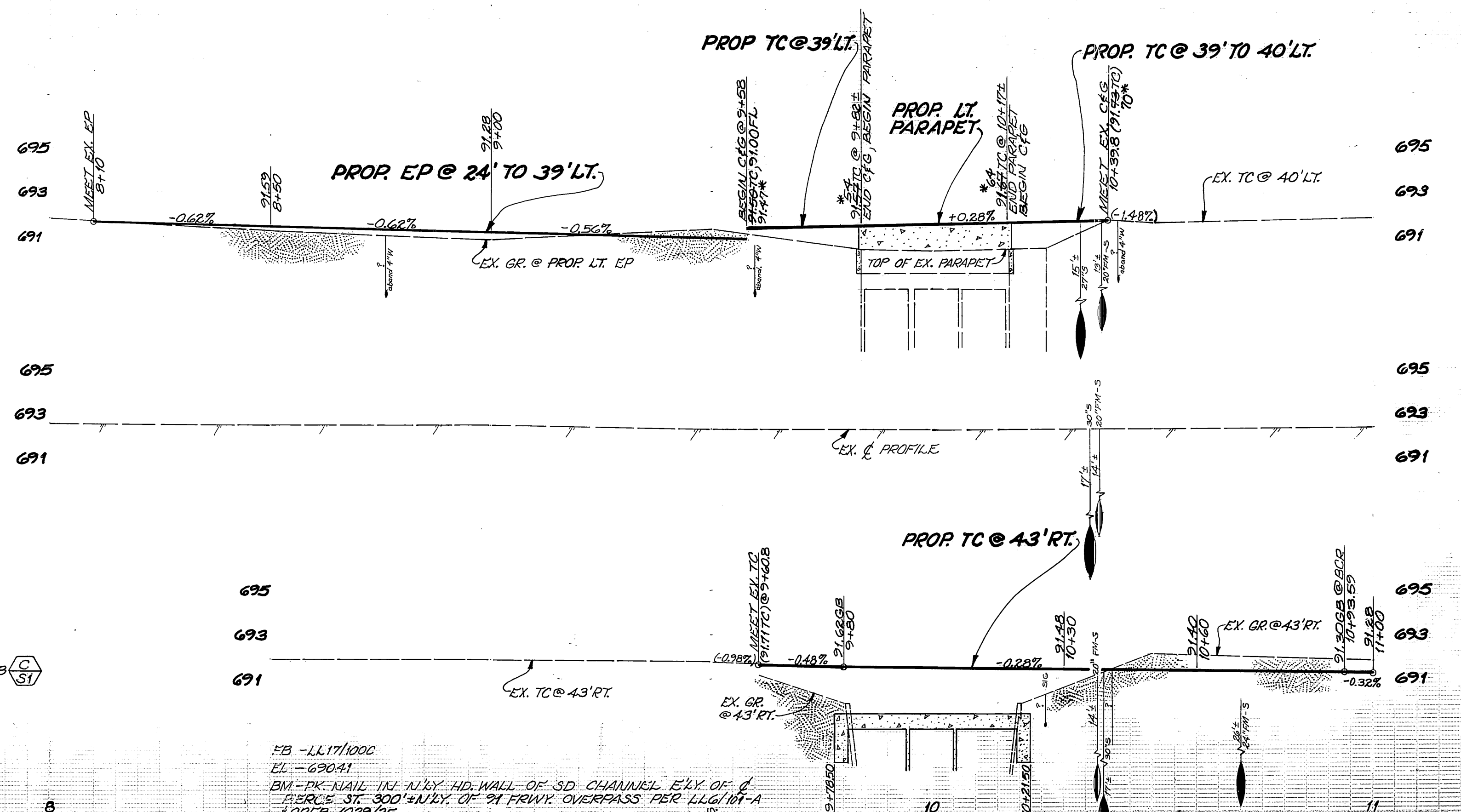


PROJECT LOCATION PLAN
SCALE: 1" = 1000'



TYPICAL SECTIONS
SCALE: HOR. 1" = 10'
VERT. 1" = 2'



CONSTRUCTION LEGEND

- CENTER LINE ———— C ————
- RIGHT-OF-WAY LINE ———— R/W ————
- SUBDIVISION LOT LINE ———— L ————
- TOP OF SLOPE ———— T ————
- TOE OF SLOPE ———— T ————
- DIRECTION OF FL. ———— F ————
- ADJ. ADJUST MH, PB TO GRADE.
- C/SI CONST. STRUC. SEC. OF 0.33' DGAC (DEUSE GRADED AC) OVER 10' CAB.
- OL VARIABLE THICKNESS DGAC OVERLAY (0.03' TO 0.30').
- R/I REMOVE CLASS I SIZE TREE (6" TO 18" DIA.).
- C/SI CONST. STRUC. SEC. OF 0.25' DGAC OVER NATIVE.
- C/SI DETAIL OR SECTION SHEET NUMBER.
- PIP PROTECT IN PLACE.
- PUE INSTALLATIONS & MODIFICATIONS BY PUBLIC UTILITY'S ELECTRICAL DIV.

SPECIFIC CONSTRUCTION NOTES

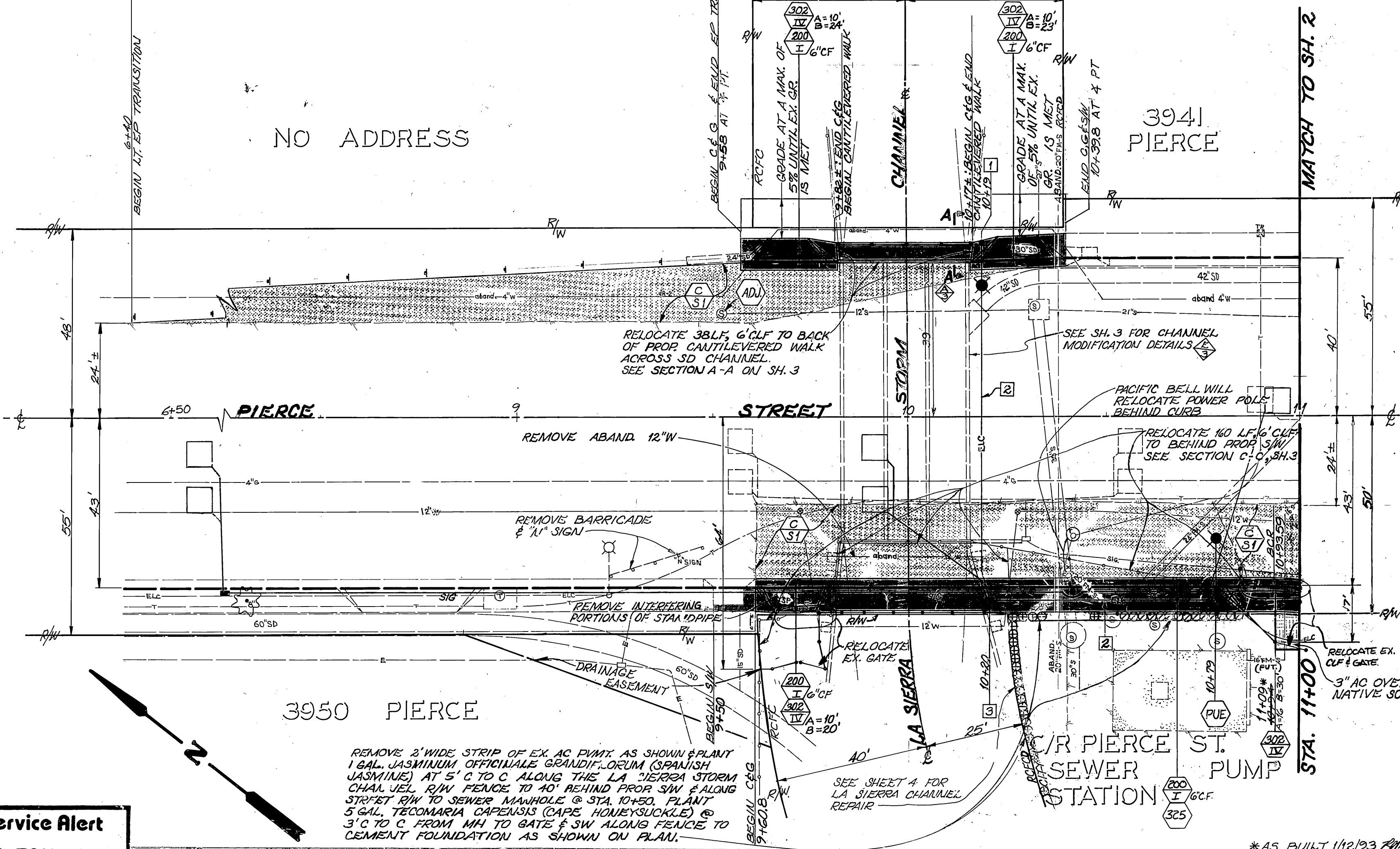
- NUMBERS ABOVE 100 IN A HEXAGON ON THE PLAN REFER TO THE RESPECTIVE STANDARD DRAWING AND SHALL BE CONSTRUCTED ACCORDINGLY, UNLESS MODIFICATIONS ARE NOTED ON THE PLAN OR COVER SHEET BELOW. ANY NUMBER SHOWN BELOW THE STANDARD DRAWING NUMBER INDICATES THE SPECIFIC ALTERNATE TO BE CONSTRUCTED.
- FOR DETAILS NOT SHOWN SEE STD. DWG. 304.

GENERAL CONSTRUCTION NOTES

- EXISTING UTILITIES SHOWN ON THIS PLAN ARE PLOTTED FROM UTILITY RECORDS. THE CONTRACTOR IS REQUIRED TO TAKE DUE PRECAUTIONARY MEASURES TO LOCATE & PROTECT ALL UTILITIES WHETHER OR NOT SHOWN ON THIS PLAN. IF THE COVER OF A UTILITY IS KNOWN IT IS SHOWN IN THE PROFILE. UTILITIES SHOWN IN THE PROFILE AS ———— INDICATES THAT THE COVER IS UNKNOWN, BUT THE UTILITY IS NOT EXPECTED TO CONFLICT WITH THE PROPOSED IMPROVEMENTS.
- ALL ELEVATIONS SHOWN ON THE PLAN SHALL BE STAKED IN THE FIELD.
- CONFLICTING UTILITIES SHOWN WITHIN CONSTRUCTION AREA WILL BE RELOCATED PRIOR TO CONSTRUCTION.
- TRAFFIC SIGNS REMOVED DURING CONSTRUCTION SHALL BE TEMPORARILY AND/OR PERMANENTLY RELOCATED OR SALVAGED BY THE CONTRACTOR PER THE DIRECTION OF THE ENGINEER OR AS SHOWN ON THE PLANS.
- CONTRACTOR SHALL GIVE RC/CD 5 DAYS WRITTEN NOTICE PRIOR TO STARTING WORK ON CANTILEVERED SIDEWALK (OR DOING ANY WORK WITHIN ROAD ENCROACHMENTS). RC/CD ENCROACHMENT PERMIT NO. 1-0-060-1608.
- THE CONTRACTOR SHALL CALL IN A LOCATION REQUEST TO UNDERGROUND SERVICE ALERT (USA), PHONE NO. 1-800-422-4133, TWO WORKING DAYS BEFORE DIGGING. NO CONSTRUCTION PERMIT WILL BE ISSUED BY THE PUBLIC WORKS DEPT. INVOLVING EXCAVATION FOR UNDERGROUND FACILITIES UNLESS THE APPLICANT HAS BEEN PROVIDED AN INQUIRY IDENTIFICATION NUMBER BY U.S.A.
- THIS PLAN IS ACCURATE FOR STREET IMPROVEMENTS ONLY. SEE PLANS X-484 AND X-489 FOR SIGNAL, STRIPING AND SIGNING IMPROVEMENTS.
- PRIME CONTRACTORS BIDDING THIS WORK SHALL HAVE A CLASS A OR CB LICENSE AT TIME OF AWARD.
- ALL WORK WITHIN THE STATE HIGHWAY SHALL CONFORM TO CALTRANS STANDARDS, DATED JAN. 1983.

ST. LT. CONST. NOTES

1. INSTALL CONCRETE STD. 31"-3" PER ITEM 3-B, LUMINAIRE 200W HPS PER ITEM H-4, LAMP 200W HPS PER ITEM H-4 & PHOTO CONTROL ALL PER UGS-800 & UGS-801.
2. INSTALL 1" RIGID GALV. STEEL (HQC) CONDUIT WITH 2#6 COPPER 600-VOLT CABLES.
3. PULL BOX (10" X 11" X 12") PER ITEM P-1 OF UGS-800. INSTALL PER UGS-320.
4. ALL FACILITIES SHALL BE INSPECTED & APPROVED BY THE P.U.E. CONSTRUCTION INSPECTOR (PHONE 782-5429). ANY CHANGES SHALL BE APPROVED BY P.U.E. PRIOR TO EXECUTION. THE CONTRACTOR SHALL BE RESPONSIBLE FOR COORDINATING ALL PHASES OF CONSTRUCTION WITH THE P.U.E. CONSTRUCTION INSPECTOR & P.U.E. CONSTRUCTION SUPERINTENDENT (PHONE 361-6173).
5. THIS IS A TWO-WIRE 240-VOLT MULTIPLE SYSTEM.
6. INSTALL CALTRANS TYPE 15 STANDARD WITH 200W HPSV LUMINAIRE AND PEC.



Underground Service Alert
Call: TOLL FREE
1-800-422-4133
TWO WORKING DAYS BEFORE YOU DIG

ENGINEER IN RESPONSIBLE CHARGE
Ronald C. Mueller
RCE 29510 Expires 3/31/21
DATE 1-29-20

CITY OF RIVERSIDE
PUBLIC WORKS DEPARTMENT
APPROVED BY: [Signature]
DATE: 1/29/20

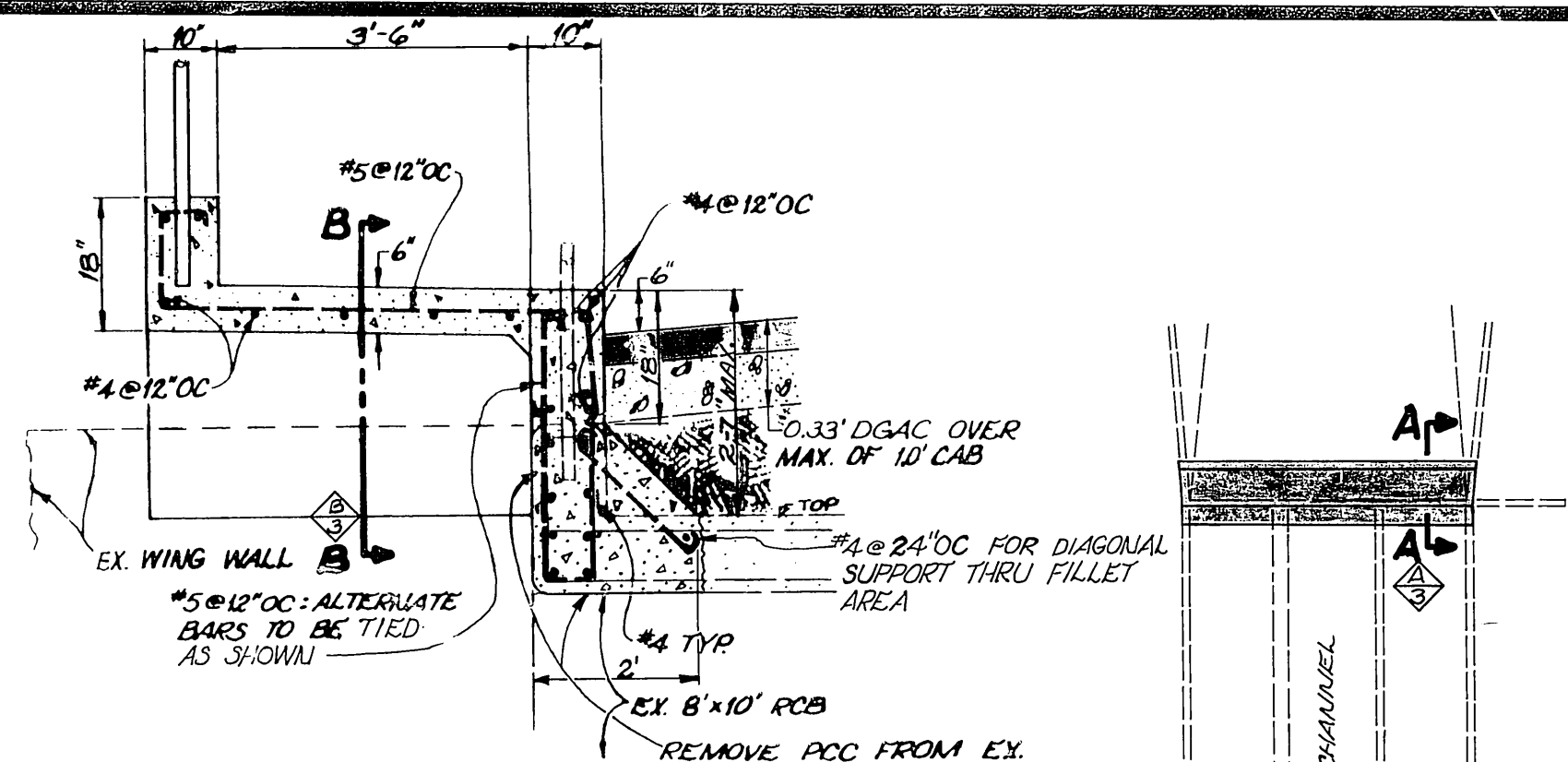
PIERCE STREET WIDENING
@ 91 FREEWAY
LA SIERRA CHANNEL TO S'LY OF FRWY 91
R-2800
SHEET 1

MARK	REVISIONS	APP'D.	DATE

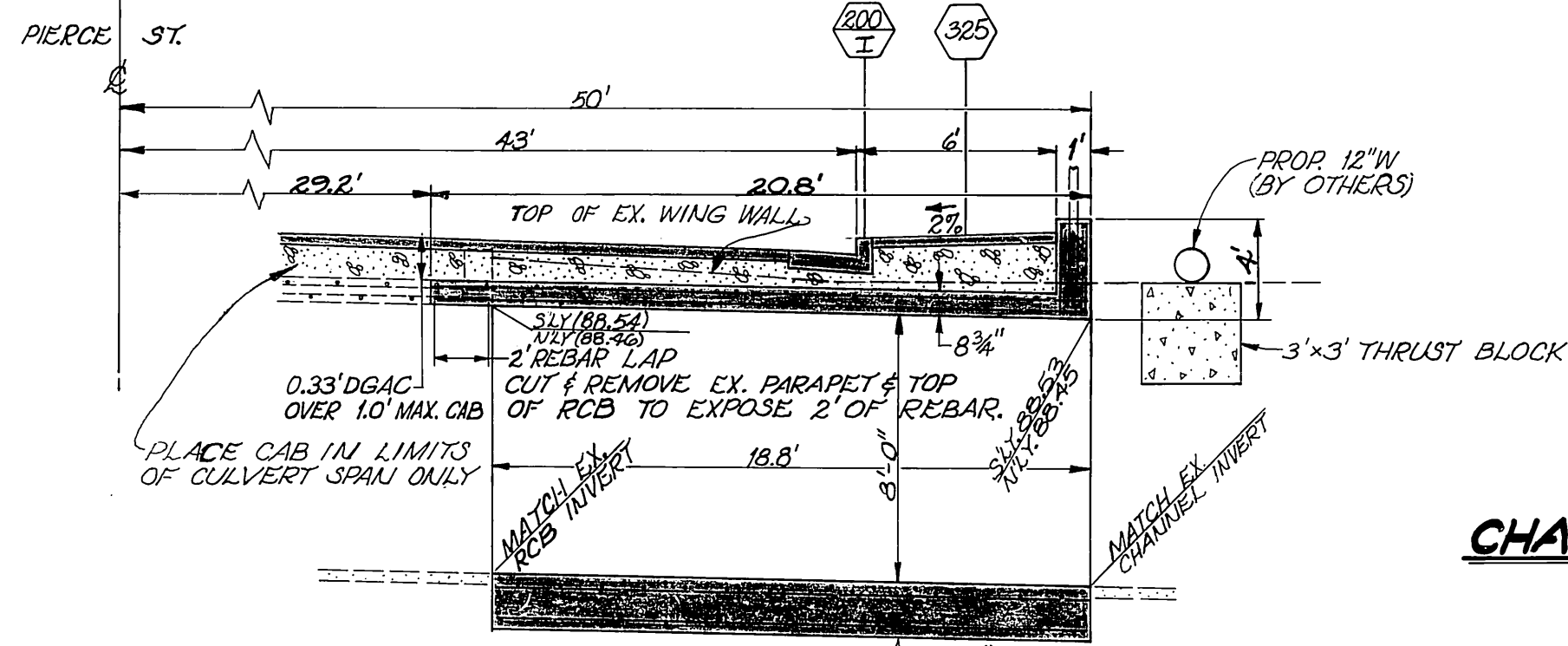
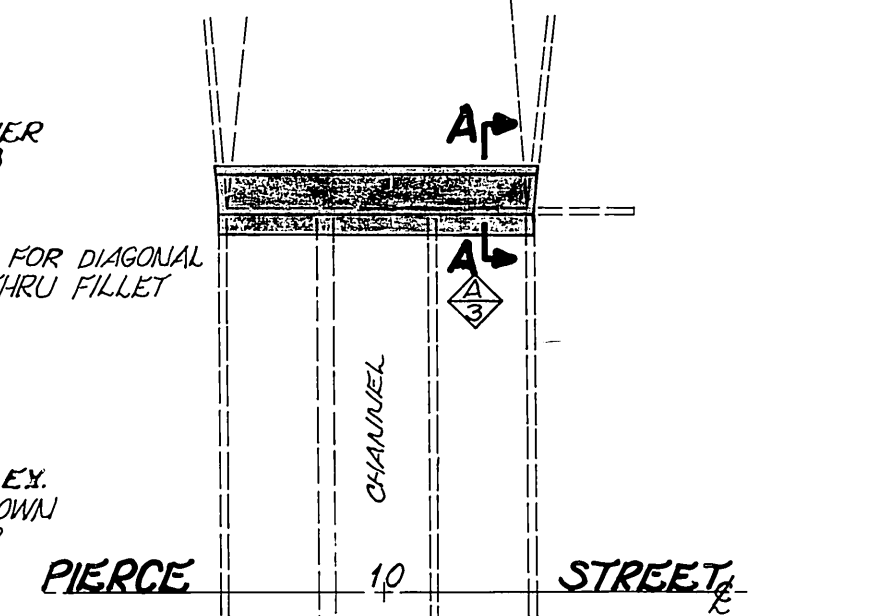
AS BUILT 1/23/20
ACCOUNT NO. 30-525-397-02

HORIZ. SCALE: 1" = 20'
VERT. SCALE: 1" = 4'
INDEXED 2-5-91 LTH

SECTION B-B
SCALE: 1"=2'

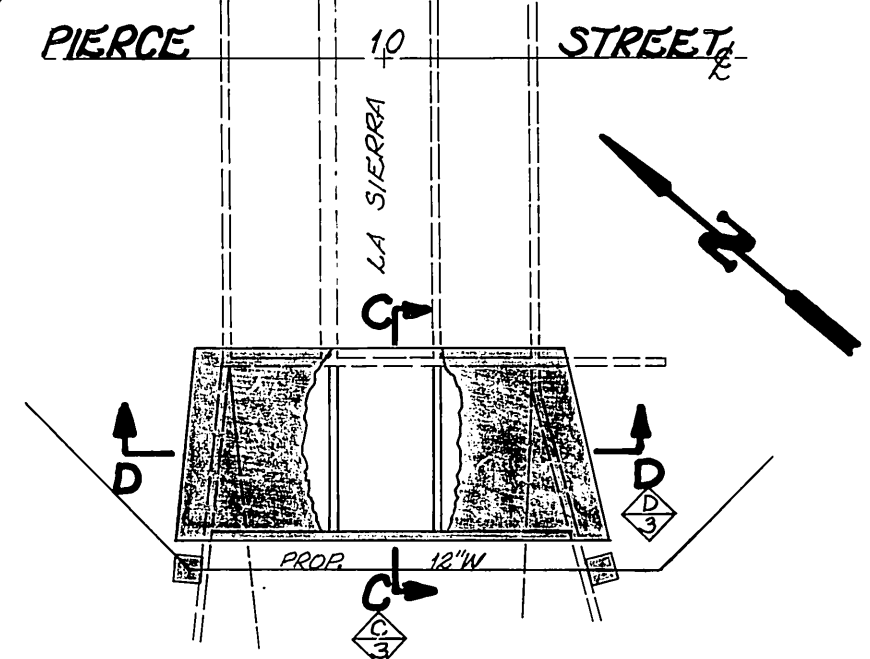


SECTION A-A
SCALE: 1"=2'

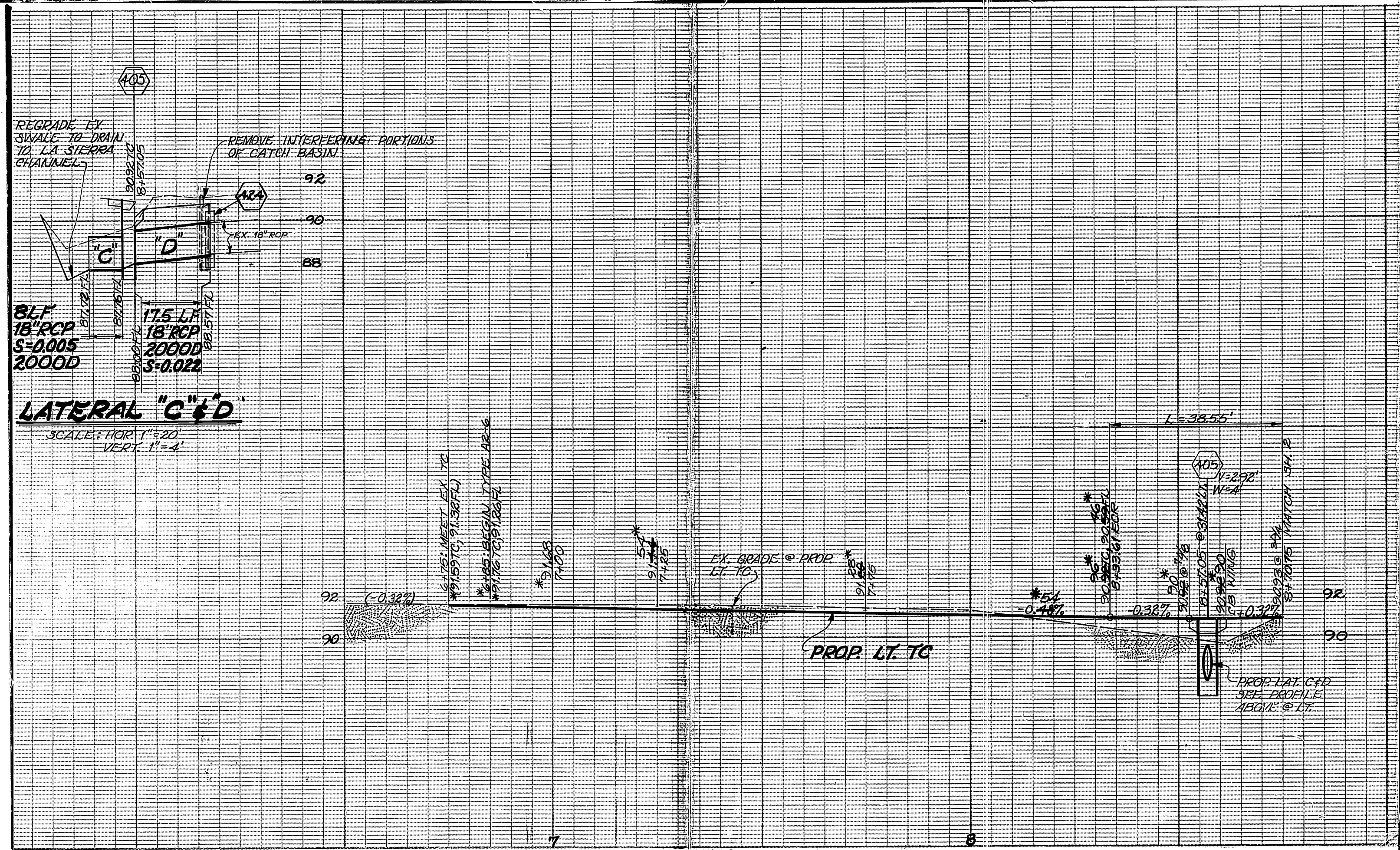


SECTION C-C
SCALE: 1"=5'

CHANNEL MODIFICATION DETAIL
SCALE: 1"=20'

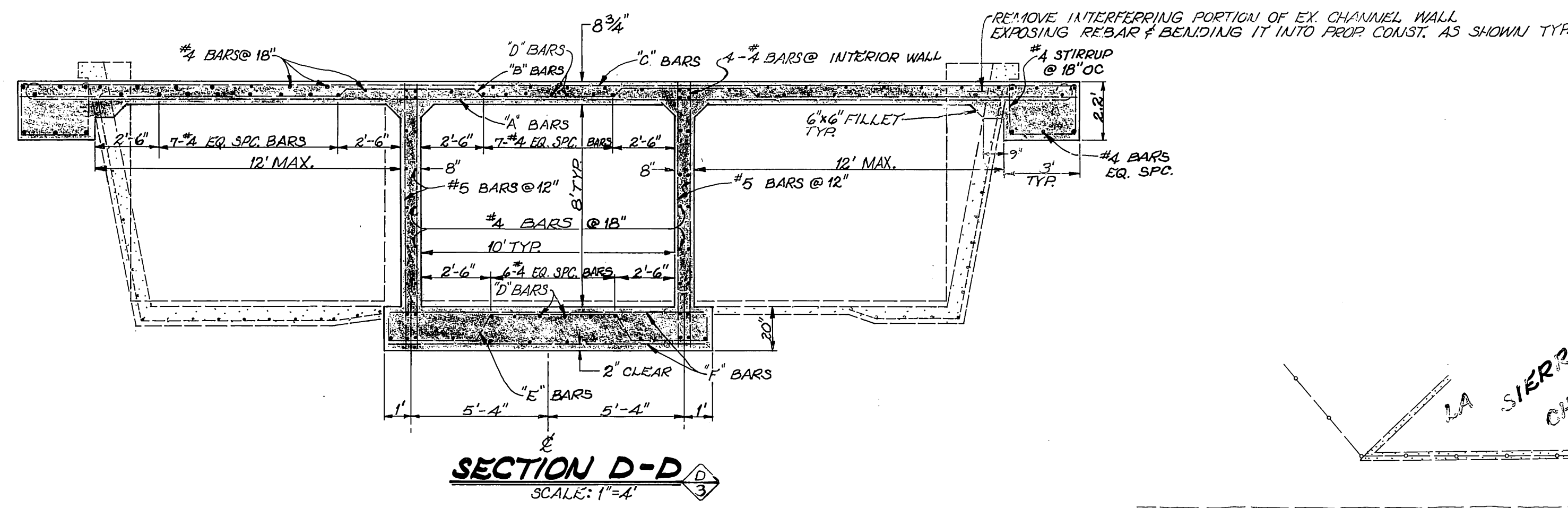


LATERAL C & D
SCALE: HORIZ. 1"=20' VERT. 1"=4'

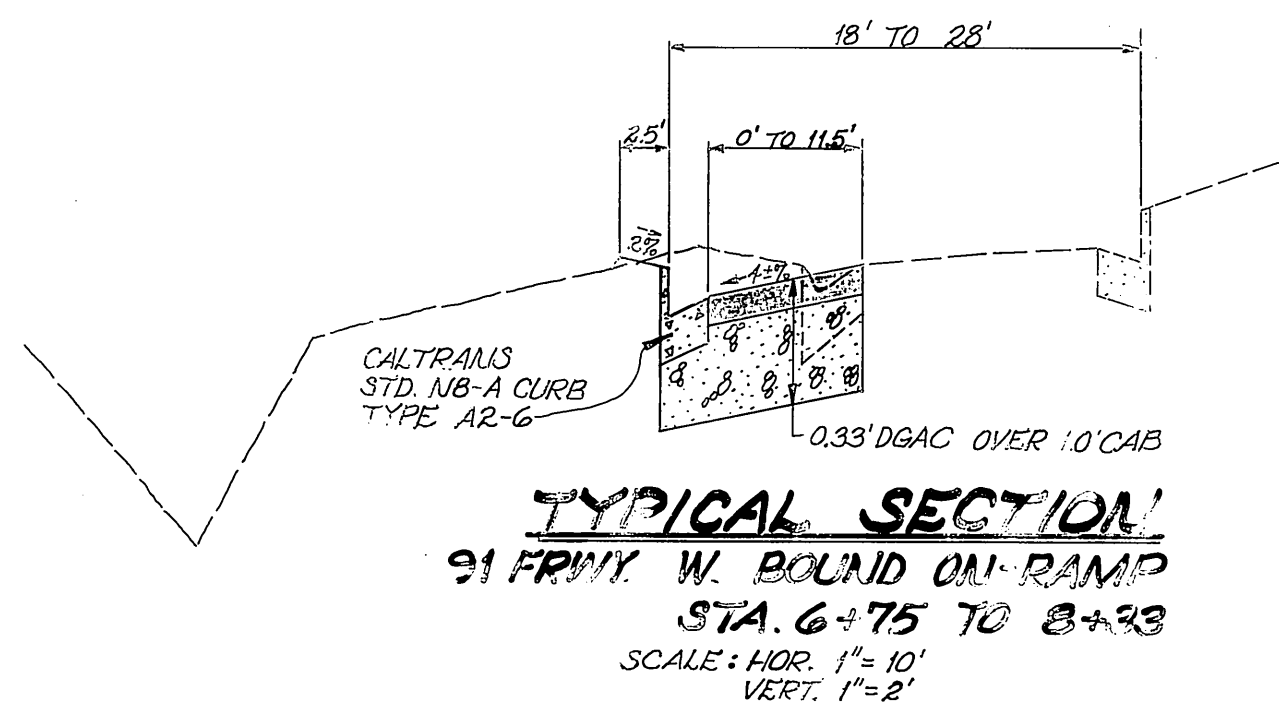


TRIPLE SPAN REINFORCED CONCRETE BRIDGE

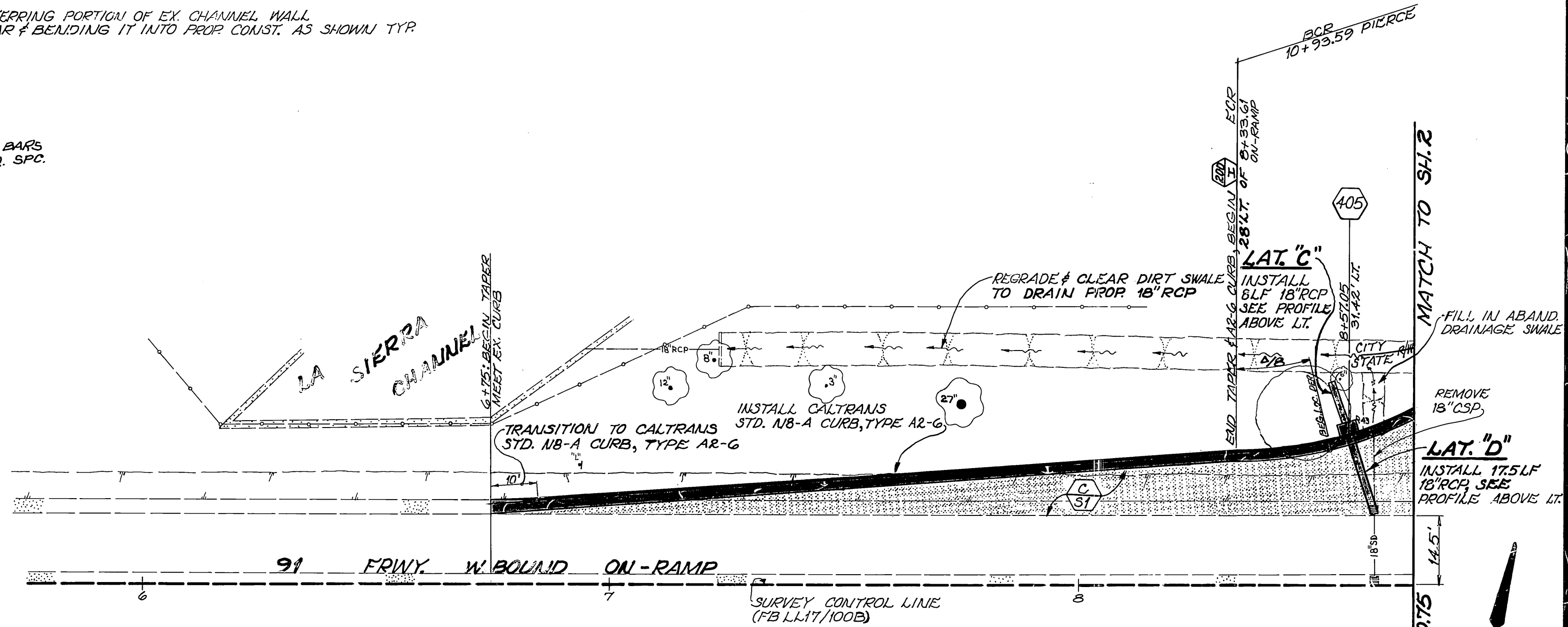
CONCRETE		STEEL	
TOP SLAB	THICKNESS	"A" BARS	SIZE BAR #
BOTTOM SLAB/FOUNDATION	THICKNESS	"B" BARS	SPACING
SIDEWALLS	THICKNESS	"C" BARS	LENGTH
		"D" BARS	SIZE BAR #
		"E" BARS	SPACING
		"F" BARS	LENGTH
			TOP SLAB
			BOTTOM SLAB
			SIZE BAR #
			SPACING
			LENGTH
			EQ SPACING
			SIZE BAR #
			SPACING
			LENGTH



SECTION D-D
SCALE: 1"=4'



TYPICAL SECTION
91 FREEWAY W. BOUND ON-RAMP
STA. 6+75 TO 8+93
SCALE: HORIZ. 1"=10' VERT. 1"=2'



ENGINEER IN RESPONSIBLE CHARGE
Ronald C. Mueller
RONALD C. MUELLER
RCE 29510 Expires 3/31/91
DATE 1-29-90



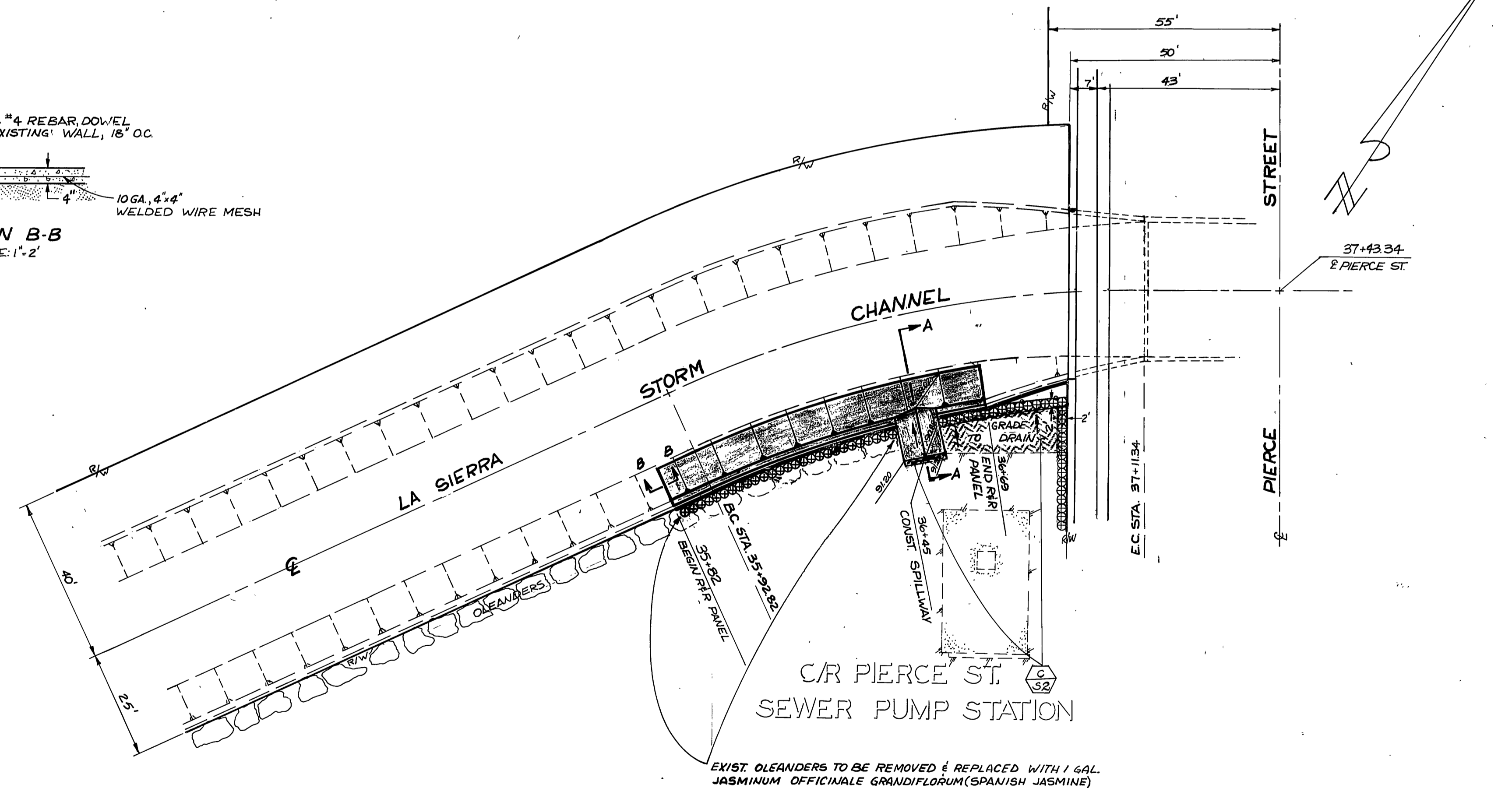
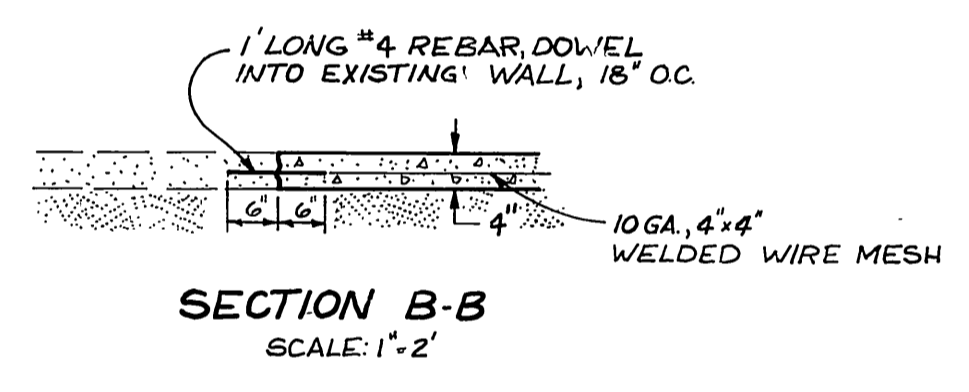
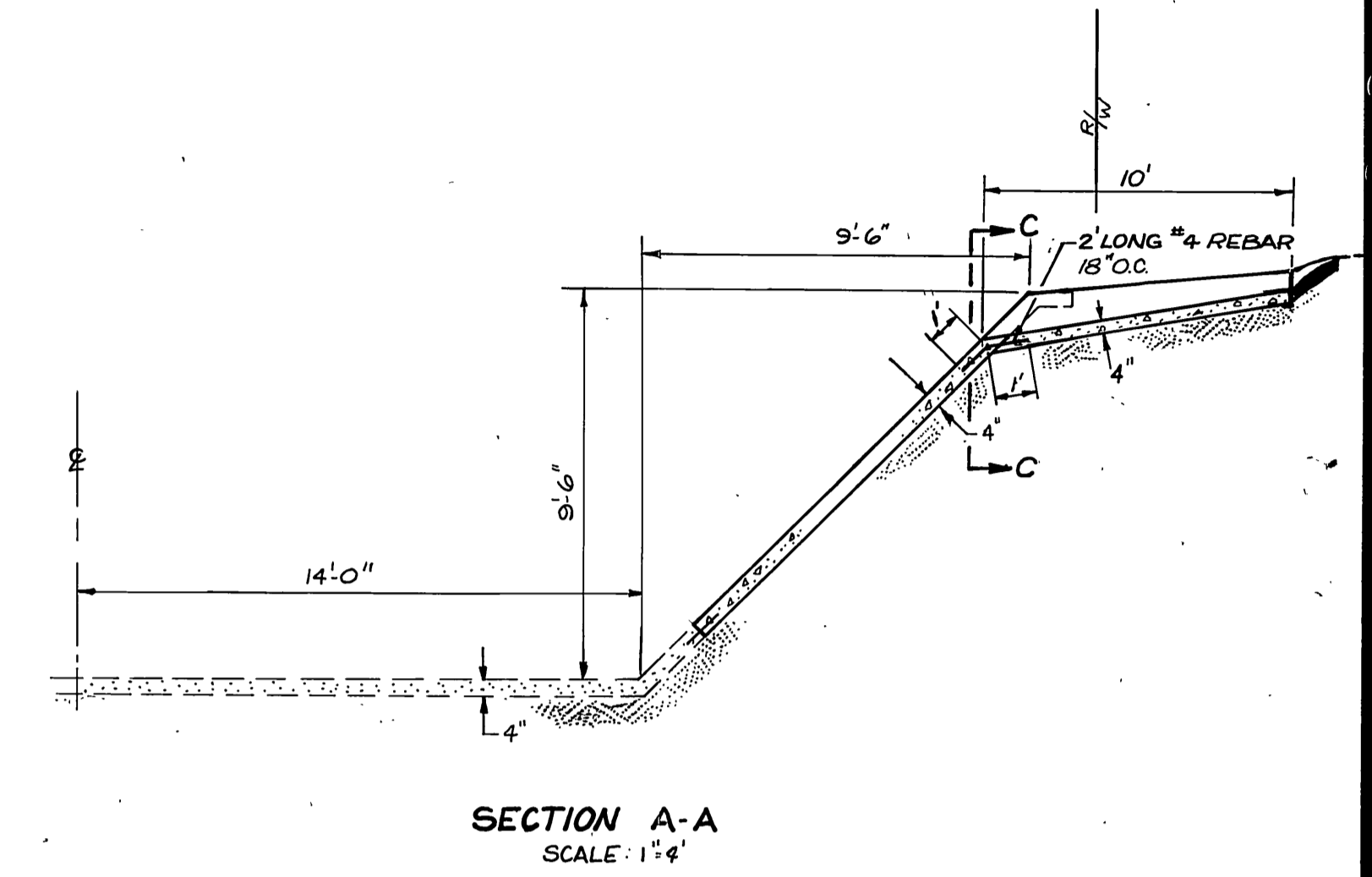
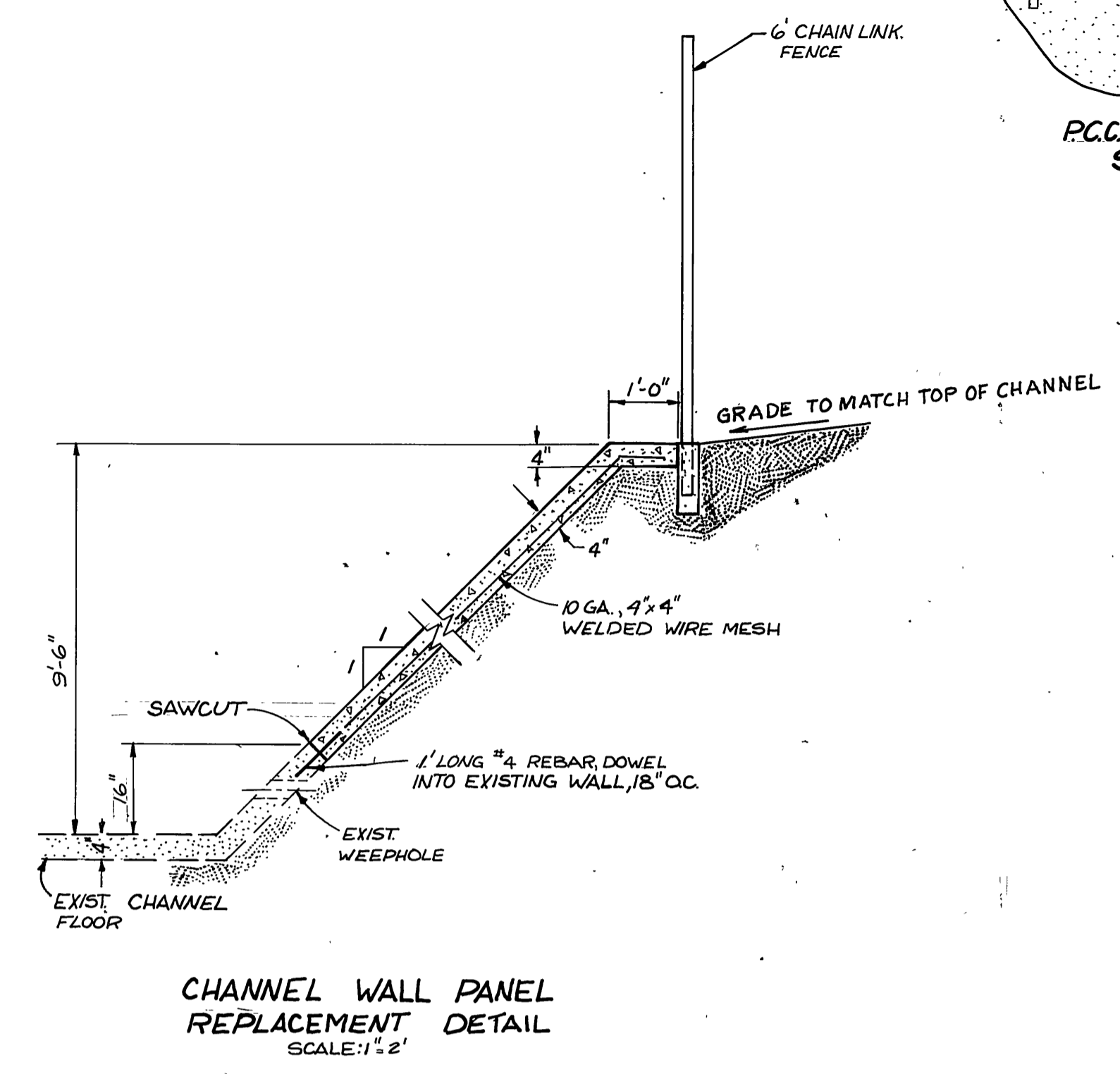
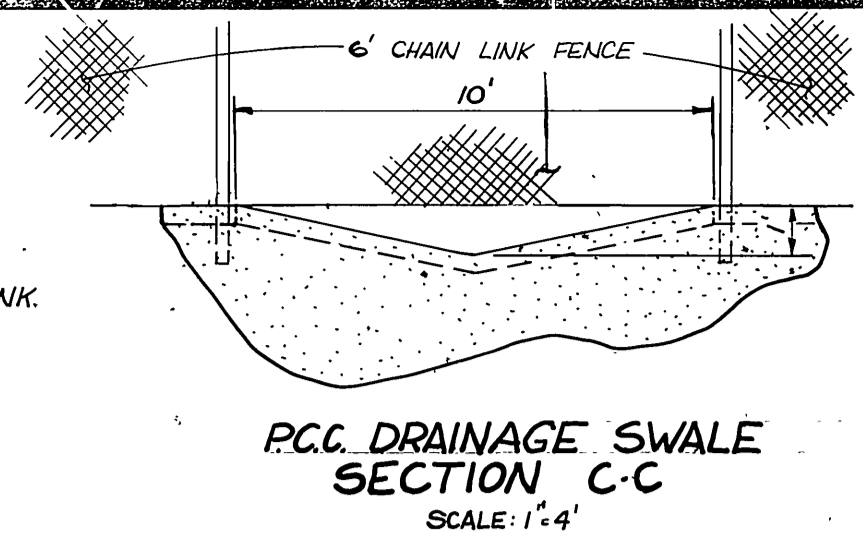
CITY OF RIVERSIDE
PUBLIC WORKS DEPARTMENT
APPROVED BY: DATE BY
PRINCIPAL ENGINEER 11/20/90
DEPUTY P.W. DIRECTOR 11/20/90
TRAFFIC DIVISION 12-5-88
CHIEF P.W. INSPECTOR 12-1-88
SURVEYOR 12-6-88
W.M. SYSTEM MGR. 1-30-90

PIERCE STREET WIDENING
@ 91 FREEWAY
LA SIERRA CHANNEL
TO S'K.Y. OF FRWY 91

AS BUILT 1/18/93
ACCOUNT NO. 30-078-397-07
R-2800
SHEET 3 OF 4

HORIZ. SCALE: 1"=20' VERT. SCALE: 1"=4'

INDEXED 2-5-91 (F)



GENERAL CONSTRUCTION NOTES

1. AIR PLACED CONCRETE SHALL BE CLASS B (5 SACK) AND SHALL HAVE A MINIMUM OF 3250 PSI. 28 DAY COMPRESSIVE STRENGTH.
2. ALL REINFORCING STEEL SHALL HAVE A MINIMUM COVER OF 1 1/2" UNLESS OTHERWISE NOTED.
3. ALL CONCRETE THICKNESS DIMENSIONS ARE THE MINIMUM ALLOWABLE.
4. TRANSVERSE GROOVES 1" DEEP AT 10' SPACING SHALL BE PROVIDED IN ALL UNREINFORCED CONCRETE CHANNEL LINING. GROOVES MAY BE TOOLED OR FORMED USING 3/8" x 1" MASONITE STRIPS.
5. THE SURFACE FINISH REQUIRED FOR UNREINFORCED CONCRETE CHANNEL LINING SHALL BE A BROOM FINISH.
6. ALL EMBANKMENTS SHALL BE COMPACTED TO NOT LESS THAN 90% MAXIMUM DENSITY AS DETERMINED BY TESTS MADE CONFORMING TO THE REQUIREMENTS OF A.A.S.H.O. DESIGNATION T99-57, THE COMPACTION AND DENSITY OF SOILS.

ENGINEER IN RESPONSIBLE CHARGE
Ronald C. Mueller
RONALD C. MUELLER
R.C.E. 29510 expires 3/31/91
DATE 1-29-90

MARK	REVISIONS	APPR.	DATE

CITY OF RIVERSIDE
PUBLIC WORKS DEPARTMENT

APPROVED BY	DATE	BY	APPROVED BY
PRINCIPAL ENGINEER	1/16/90		<i>Barry Bond</i>
PARK DEPARTMENT			PUBLIC WORKS DIRECTOR
TRAFFIC DIVISION			
CHIEF P. W. ENGINEER	1.26.90		
W.M. SYSTEM MGR.	1-30-90		

DATE 2/28/90

PIERCE STREET WIDENING
@ 91 FREEWAY
LA SIERRA CHANNEL
REPAIR

HORIZ. SCALE: 1"=20' VERT. SCALE: 1"=

ACCOUNT NO. 30-575-397-07
R-2800
SHEET 4 OF 4