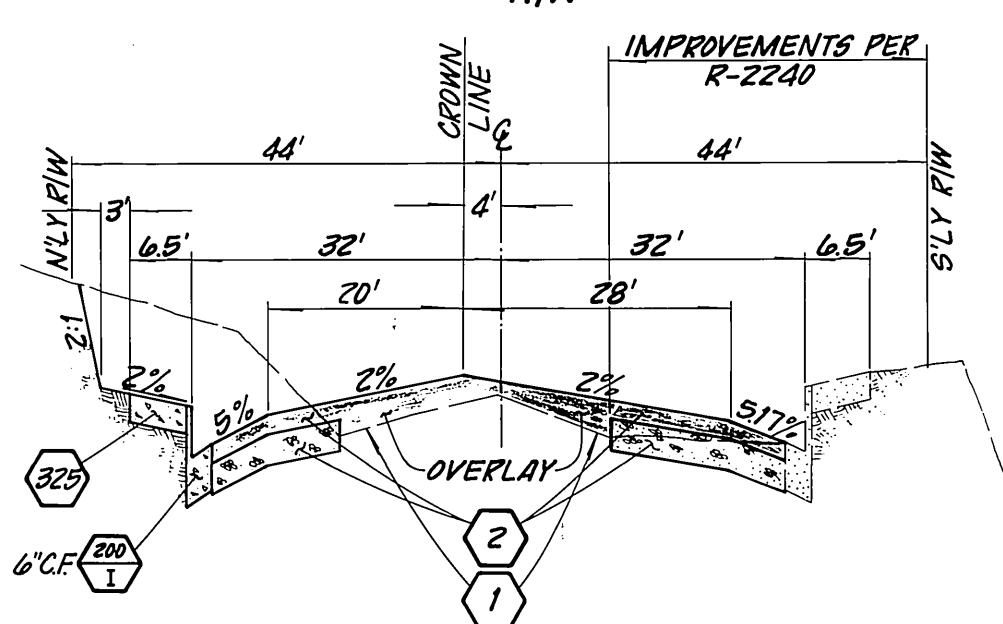
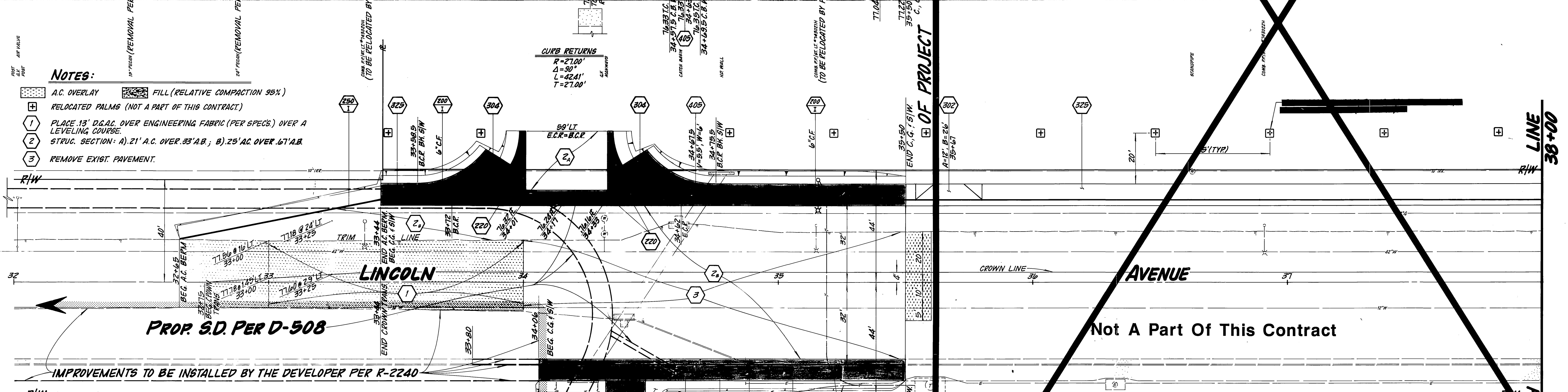
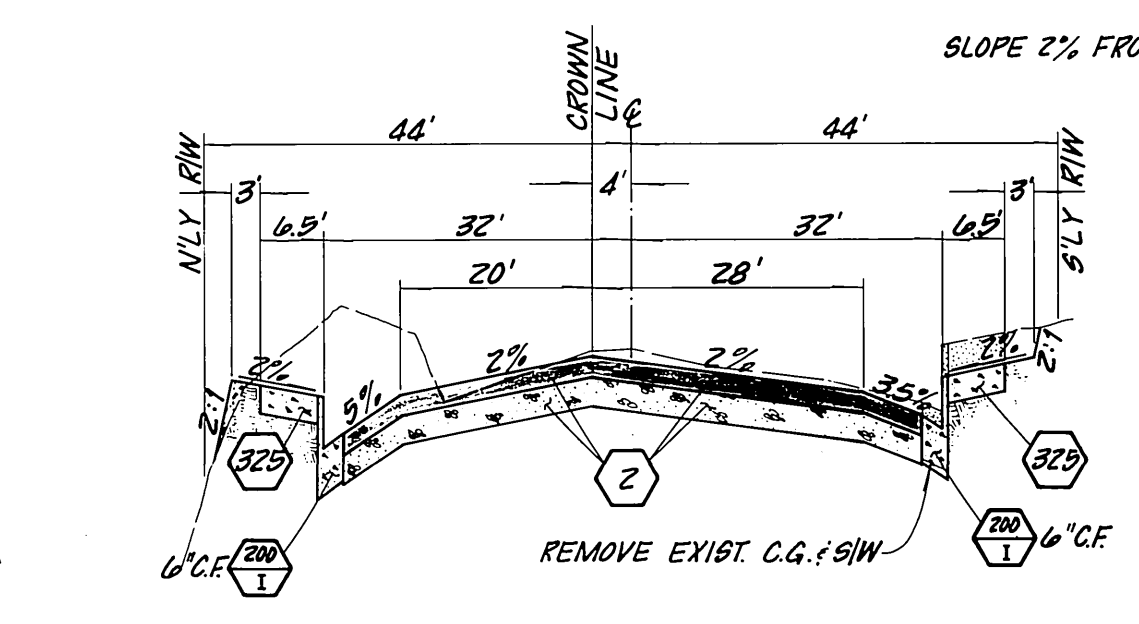


NOTES:

- 1 A.C. OVERLAY
- 2 FILL (RELATIVE COMPACTION 98%)
- 3 RELOCATED PALMS (NOT A PART OF THIS CONTRACT)
- 4 PLACE 13" D.G.A.C. OVER ENGINEERING FABRIC (PER SPECS) OVER A LEVELING COURSE.
- 5 STRUC. SECTION: A) 21" A.C. OVER 33" A.B.; B) 25" A.C. OVER 67" A.B.
- 6 REMOVE EXIST. PAVEMENT.



SECTION AT STA. 33+50 LINCOLN



SECTION AT STA. 35+00 LINCOLN

ENGINEER IN RESPONSIBLE CHARGE
Hans J. Kamrath
 HANS J. KAMRATH
 R.C.E. 14712 expires 3/31/89
 DATE 11/12/87



GEN. REVISIONS TO MATCH EXIST. IMPROV. AS INSTALLED PER R-2240

MARK	REVISIONS	APPR. DATE

DESIGNED BY: *[Signature]* DRAWN BY: *[Signature]* CHECKED BY: *[Signature]*

CITY OF RIVERSIDE
 PUBLIC WORKS DEPARTMENT

APPROVED BY	DATE	BY
<i>[Signature]</i>	11/12/87	<i>[Signature]</i>
PRINCIPAL ENGINEER		PUBLIC WORKS DIRECTOR
TRAFFIC DIVISION	11/12/87	
CHIEF P.W. INSPECTOR		
DEPUTY P.W. DIRECTOR		

DATE 11/13/87

LINCOLN AVENUE WIDENING
 From St. Lawrence Wash to A.T. & S.F. R.R.

ACCOUNT NO. 30-876-216-30
R-2894A
 SHEET 1 OF 1

HORIZ. SCALE: 1" = 20' VERT. SCALE: 1" = 2'
 INDEXED 1-13-89