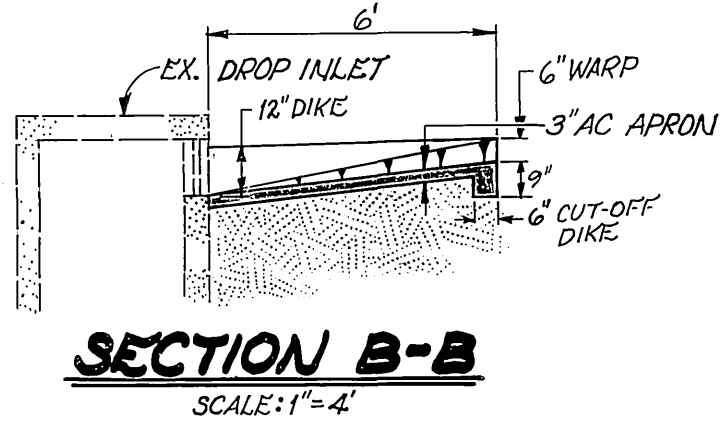
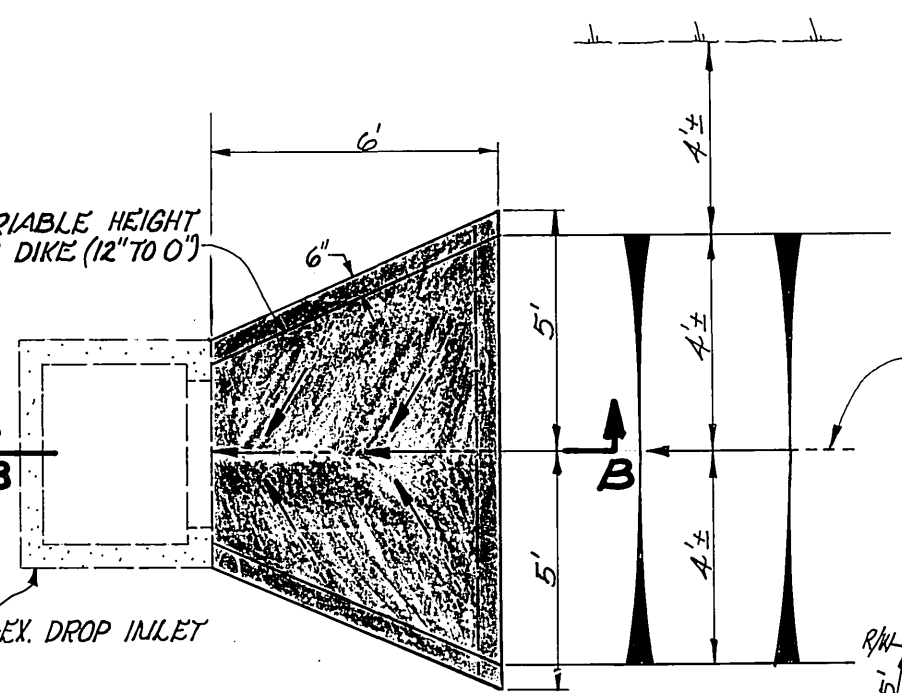


DETAIL A
SCALE: 1"=4'

SECTION A-A
SCALE: 1"=2'



SECTION B-B
SCALE: 1"=4'



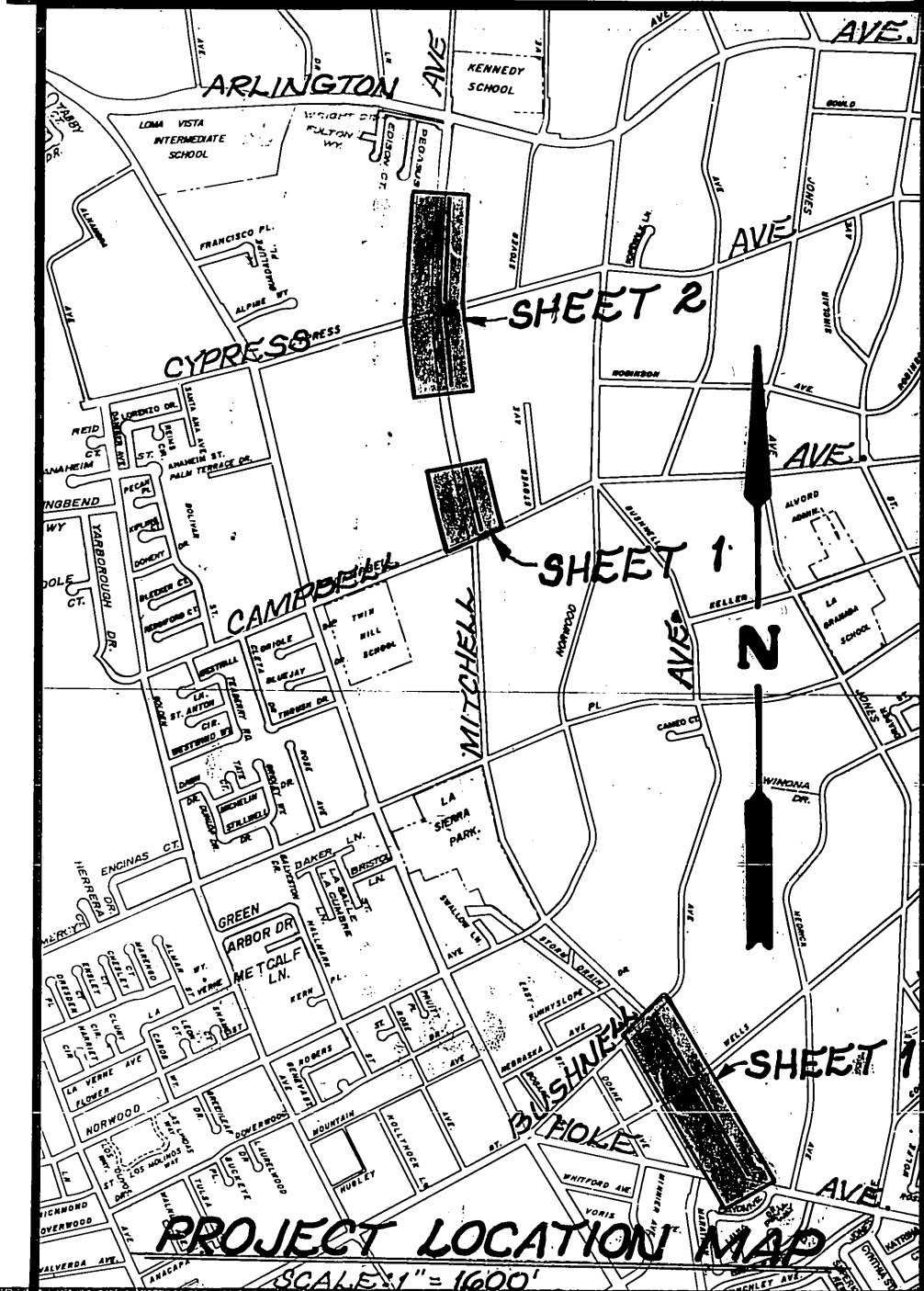
DETAIL B
SCALE: 1"=4'

TYPICAL SECTION
STA. 0+15 TO 96+15
N.T.S.

* A.C. BERM CONSTRUCTED @ E.P. FROM STA 90+00± TO STA 96+00± DUE TO EX. PROPERTIES BEING BELOW STREET LEVEL.

- LEGEND**
- F FILL & GRADE EARTHEN SWALES WITH IMPORTED BORROW COMPACTED TO 90% RELATIVE & GRADE TO DRAIN PER FL ARROWS ON PLAN.
 - R REMOVE EX. STORM DRAIN CULVERT & GRADE TO DRAIN PER FL ARROWS ON PLAN.
 - SL FILL EX. STORM DRAIN CULVERT WITH PORTLAND CEMENT SAND-SLURRY.
 - 412 M CONSTRUCT STD. 412 WITH ALHAMBRA FOUNDRY: A-1558 GRATE OR APPROVED EQUAL.
- GENERAL CONSTRUCTION NOTES**
- 1 PIPE GRADES SHALL BE MADE AVAILABLE AFTER CONTRACTOR EXPOSES EX. BOX INVERTS.

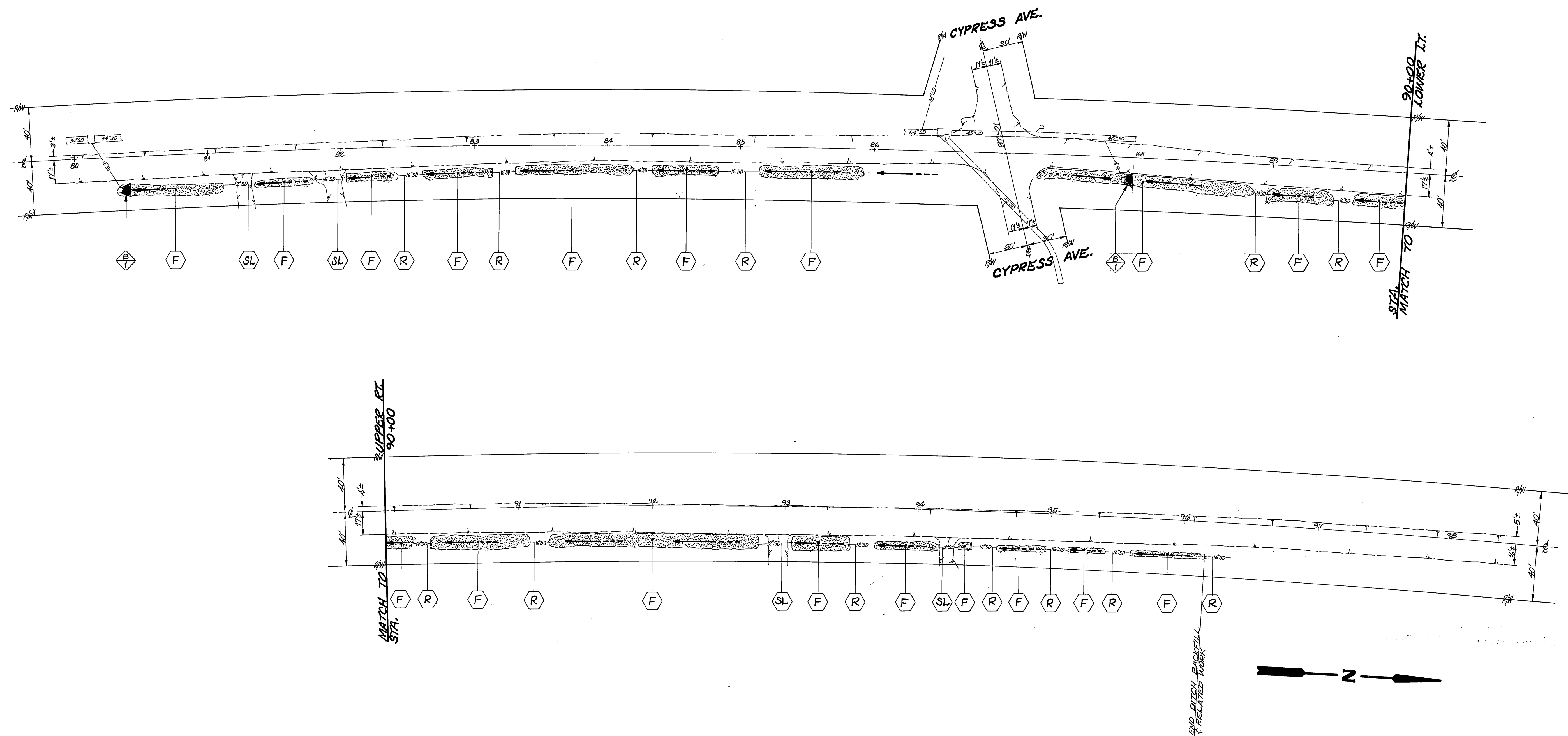
ENGINEER IN RESPONSIBLE CHARGE
Ronald C. Mueller
RONALD C. MUELLER
R.C.E. 29510
DATE 8-25-87



* AS BUILT RVZ 9-27-88

CITY OF RIVERSIDE PUBLIC WORKS DEPARTMENT		MITCHELL AVENUE DITCH BACKFILL HOLE AVE. TO ARLINGTON AVE.		ACCOUNT NO. 30-375-393-07
APPROVED BY PRINCIPAL ENGINEER PARK DEPARTMENT	DATE 8/21/87	APPROVED BY PUBLIC WORKS DIRECTOR <i>Darryl Paul</i>	R-2895 SHEET 1 OF 2	
MARK DESIGNED BY <i>J.H.</i>	REVISIONS DRAWN BY <i>SM</i>	APPR. DATE 8/21/87	TRAFFIC DIVISION CHIEF P.W. ENGINEER 8/21/87	DATE 8/31/87

HORIZ. SCALE: 1"=40' VERT. SCALE: 1"=



INDEXED 11-16-87 4H
ACCOUNT NO. 30-575-928-07

CITY OF RIVERSIDE
PUBLIC WORKS DEPARTMENT

MITCHELL AVENUE
DITCH BACKFILL
HOLE AVE. TO ARLINGTON AVE.

R-2895
SHEET 2 OF 2

APPROVED BY	DATE	BY	APPROVED BY	DATE
PRINCIPAL ENGINEER	8/22/87	8/22/87	PUBLIC WORKS DIRECTOR	8/31/87
PARK DEPARTMENT				
TRAFFIC DIVISION				
CHIEF P. W. ENGINEER	8/31/87	8/31/87	CHIEF P.W. INSPECTOR	8/31/87

DESIGNED BY *J.H.* DRAWN BY *AM* CHECKED BY *ACM*

HORIZ. SCALE: 1" = 40' VERT. SCALE: 1" =