

RIVERSIDE



CALIFORNIA

PUBLIC WORKS DEPARTMENT

TYLER STREET REALIGNMENT AT RIVERSIDE WATER CO. CANAL

GENERAL NOTES

- CONSTRUCTION SHALL BE IN ACCORDANCE WITH THE CITY OF RIVERSIDE STD. SPECS AND STD. DRAWINGS FOR PUBLIC WORKS CONST., 1988 EDITION.
- NUMBERS ABOVE 100 IN A HEXAGON ON THE PLAN REFER TO THE RESPECTIVE STD. DWG. AND SHALL BE CONST. ACCORDINGLY. UNLESS MOD'S ARE NOTED ON THE PLAN. ANY NUMBER SHOWN BELOW THE STD. DWG. NUMBER INDICATES THE SPECIFIC ALTERNATE TO BE CONSTRUCTED.
- REMOVE CURB & GUTTER, CROSS GUTTERS & A.C. BERM WITHIN THE PROJECT AREA.
- CUT & FILL SLOPES ARE 1.5:1 & 2:1 RESPECTIVELY.
- ALL ELEV. SHOWN ON THE PLAN SHALL BE STAKED IN THE FIELD.
- CONFLICTING UTILITIES IN THE CONST. AREA SHALL BE RELOCATED OR ABANDONED.

CONSTRUCTION NOTES

- REMOVE EXIST. A.C. AND REPLACE WITH STRUCTURAL SECTION OF 0.21' A.C. OVER 0.33' AGG. BASE MATERIAL.
- GRADE AREA BEHIND CURB & GUTTER, A.C. BERM, SIDEWALK, AND EDGE OF PAVEMENT AS SHOWN ON PLANS AND TYPICAL SECTIONS. DIRT FILL MAT. SHALL BE COMPACTED TO 90% (MIN.).
- THIS AREA IS LANDSCAPED AND HAS AN ACTIVE SPRINKLER SYSTEM. CONTRACTOR SHALL RESTORE LANDSCAPE AND IRRIGATED AREAS TO PRIOR CONDITION SUCH THAT ADEQUATE LANDSCAPING AND IRR. COVERAGE ARE PROVIDED. EXIST. ROCKS SHALL REMAIN IN PLACE.
- CONST. CURB OUTLET STRUCTURE PER STD. 410 - MODIFIED AS SHOWN ON PLAN.
- CONST. CLEAN OUT BOX PER STD. 425 - MODIFIED AS SHOWN ON PLAN.
- CONST. STRUCTURAL SECTION OF 0.21' A.C. OVER 0.33' AGG. BASE MATERIAL.
- CONTRACTOR TO RELOCATE STL. PIPE GATE INCL. POSTS (EXACT LOCATION WILL BE DETERMINED IN THE FIELD).
- DIRT FILL MATERIAL COMP. TO 90% R.C.
- CONTRACTOR TO HYDROSEED EMBANKMENT SLOPE AREA WITH ANNUAL RYE OR MIXED GRASS FROM STA. 20+00 TO STA. 21+50, RT. OF & TYLER ST. AS SHOWN ON PLAN.

STREET LIGHT NOTES

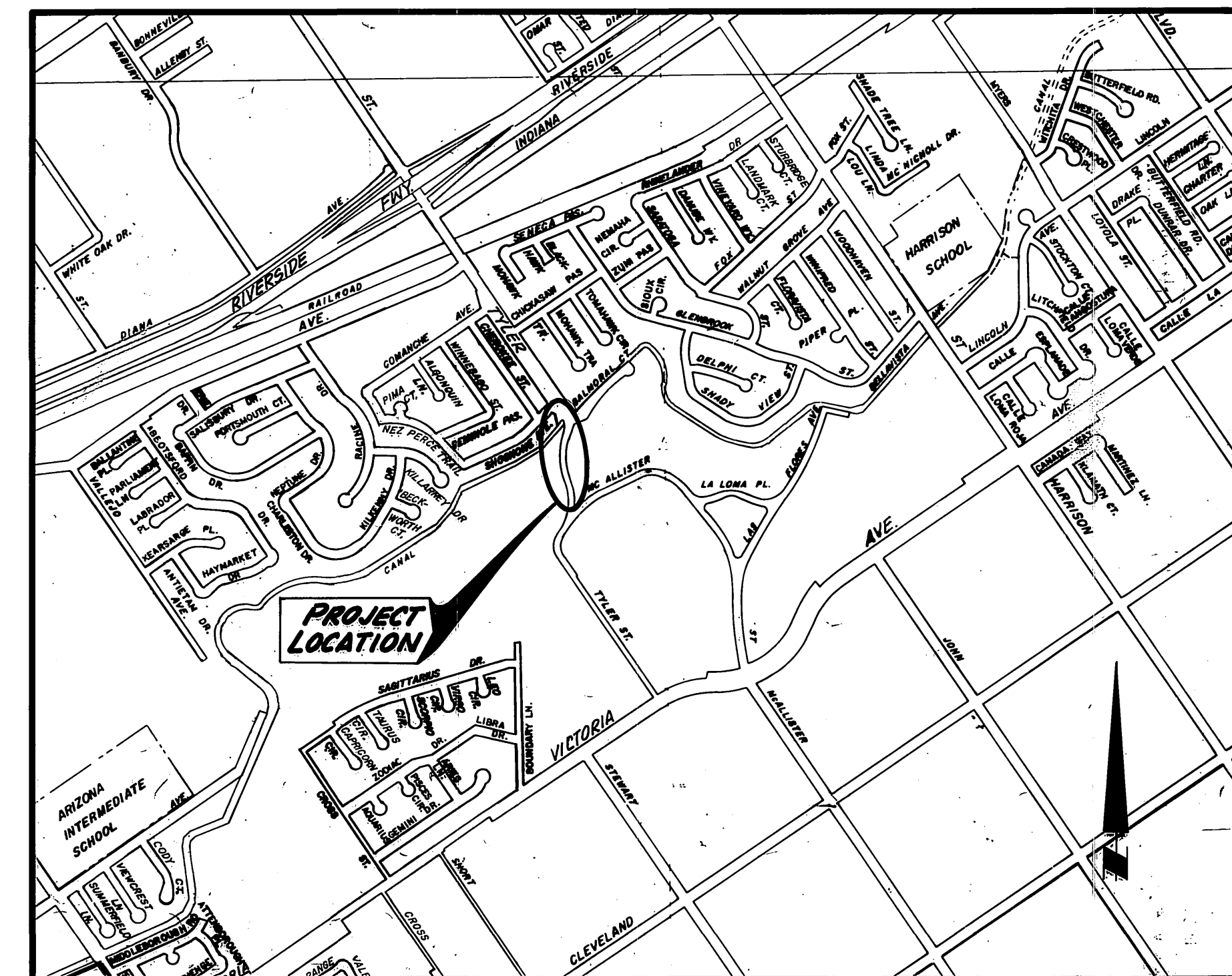
- INSTALL ALL ST. LT. FACILITIES AS SHOWN AND IN CONFORMANCE WITH ST. LT. SPECIFICATION 119 & U.G.S. STD. DWGS. CONTACT 782-5429 FOR REQUIRED INSPECTION.
- INSTALL NEW ST. LT. PULLBOX PER ITEM # P1 OF U.G.S. 800.
- INSTALL NEW 1" H.D.G. CONDUIT WITH 2 #8 CU. 600 V. CABLES.
- RELOCATE EXIST. ST. LT. TO NEW FOUNDATION PER ITEM S-2 OF U.G.S. 800 & 801.
- CONTRACTOR TO ABANDON EXIST. CABLE-IN-CONDUIT, 2" H.D.P.E.

PARK DEPARTMENT NOTES

- All related work shall conform to the City of Riverside, Park and Recreation Department Standards.
- Contact the Park Projects Inspector a minimum of 48 hours in advance at 782-5223 to schedule inspections. Inspections shall be required:
 - When plant locations have been spotted in the field prior to digging plant pits.
 - While digging plant pits and planting/relocating trees.
 - After planting and all other indicated or specified work has been completed for start of maintenance.
 - At end of maintenance/final acceptance (contractor/developer will be released from maintenance only upon receipt of written notification from the city that the Park and Recreation Department is assuming maintenance responsibilities).
- The Contractor/Developer shall maintain all plantings for a minimum period of one (1) year.
- Street Tree Planting shall be as follows:

Street Name	Botanical Name/Common Name	Min. Size	Approx. Spacing	No. Req.
TYLER ST	EUC. VIMINALEA/MANNAGUM	5 GA.	AS SHOWN	4

 NOTE: CONTRACTOR TO EXTEND EXIST. 3/4" P.V.C. I.R.R. SYSTEM INCLUDING FURNISHING ONE BUBBLER HEAD TO IRRIGATE EACH TREE.
- Park and Recreation Department and Public Works Department permits are required prior to commencement of tree relocation and/or removal work. For all trees within the ultimate pavement area, backfill of all holes is to be inspected by the city for proper compaction.



VICINITY MAP

CITY OF RIVERSIDE WATER ENGINEERING		CITY OF RIVERSIDE ELECTRICAL ENGINEERING	
R. Mc Arath APPROVED BY: 5-4-88 DATE:		John Johnson APPROVED BY: 5-4-88 DATE:	
HANS J. KAMRATH R.C.E. 14712 DATE 7/14/88		JOHN JOHNSON R.C.E. 14712 DATE 7/14/88	

* As built 2-1-89 JH

INDEXED 8-16-88 LTH

ACCOUNT NO. 30-575-393-10

CITY OF RIVERSIDE
PUBLIC WORKS DEPARTMENT

APPROVED BY	DATE	BY	DATE
PRINCIPAL ENGINEER	7-18-88	BARRY BOEL	7-18-88
PARK DEPARTMENT	7-18-88	BARRY BOEL	7-18-88
TRAFFIC DIVISION	7-14-88	BARRY BOEL	7-14-88
INSPECTION	7/13/88	WOL	7/13/88
SURVEY	7/12/88	ARH	7/12/88

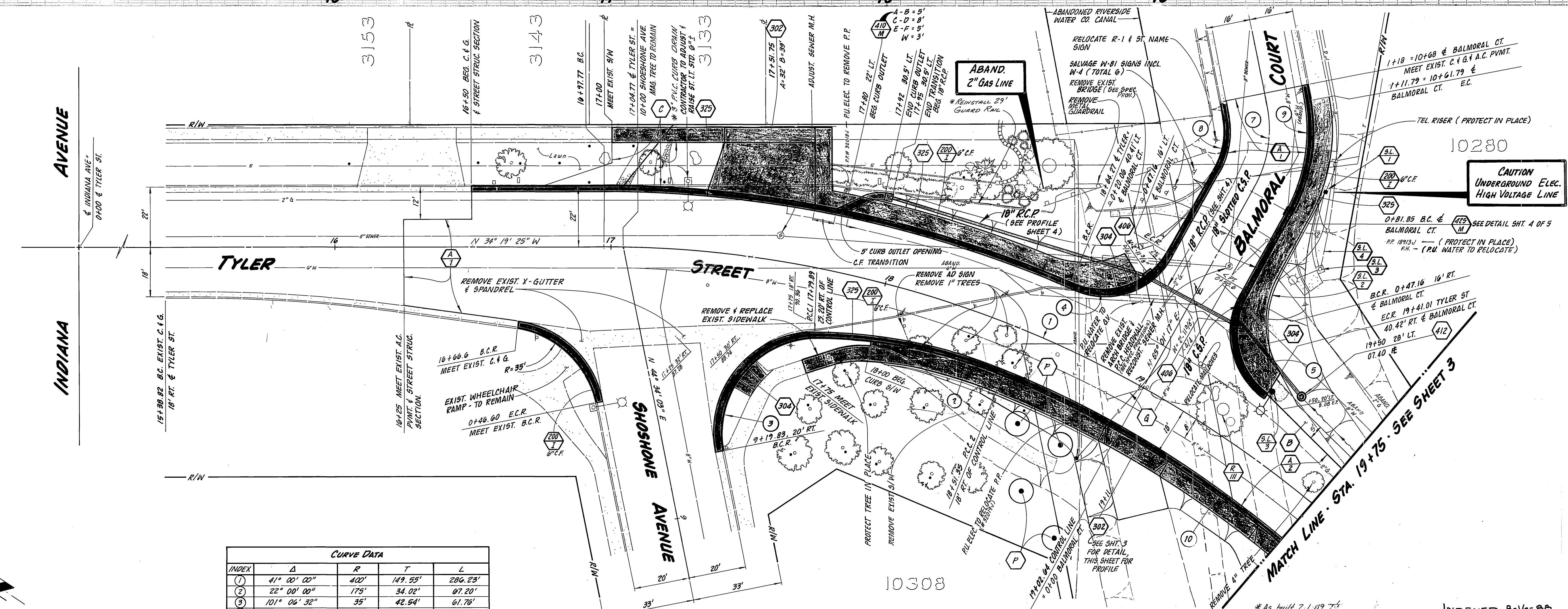
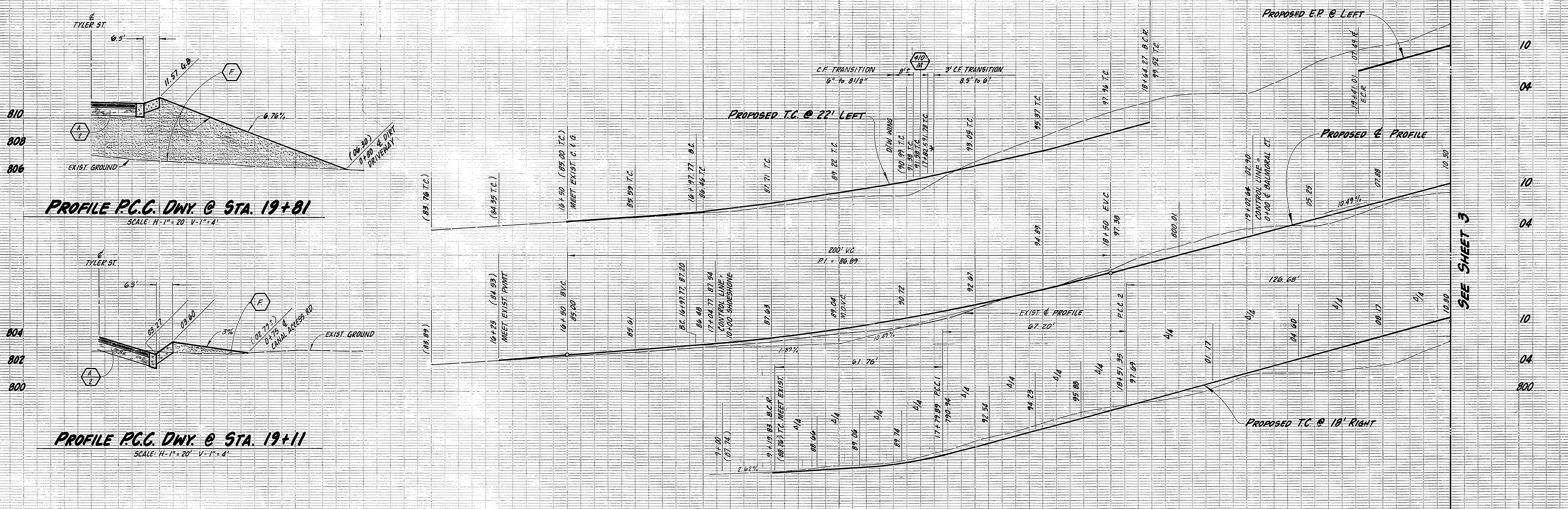
DATE 7/18/88

TYLER STREET REALIGNMENT

TITLE SHEET

SCALE: AS SHOWN

SHEET 1 OF 5

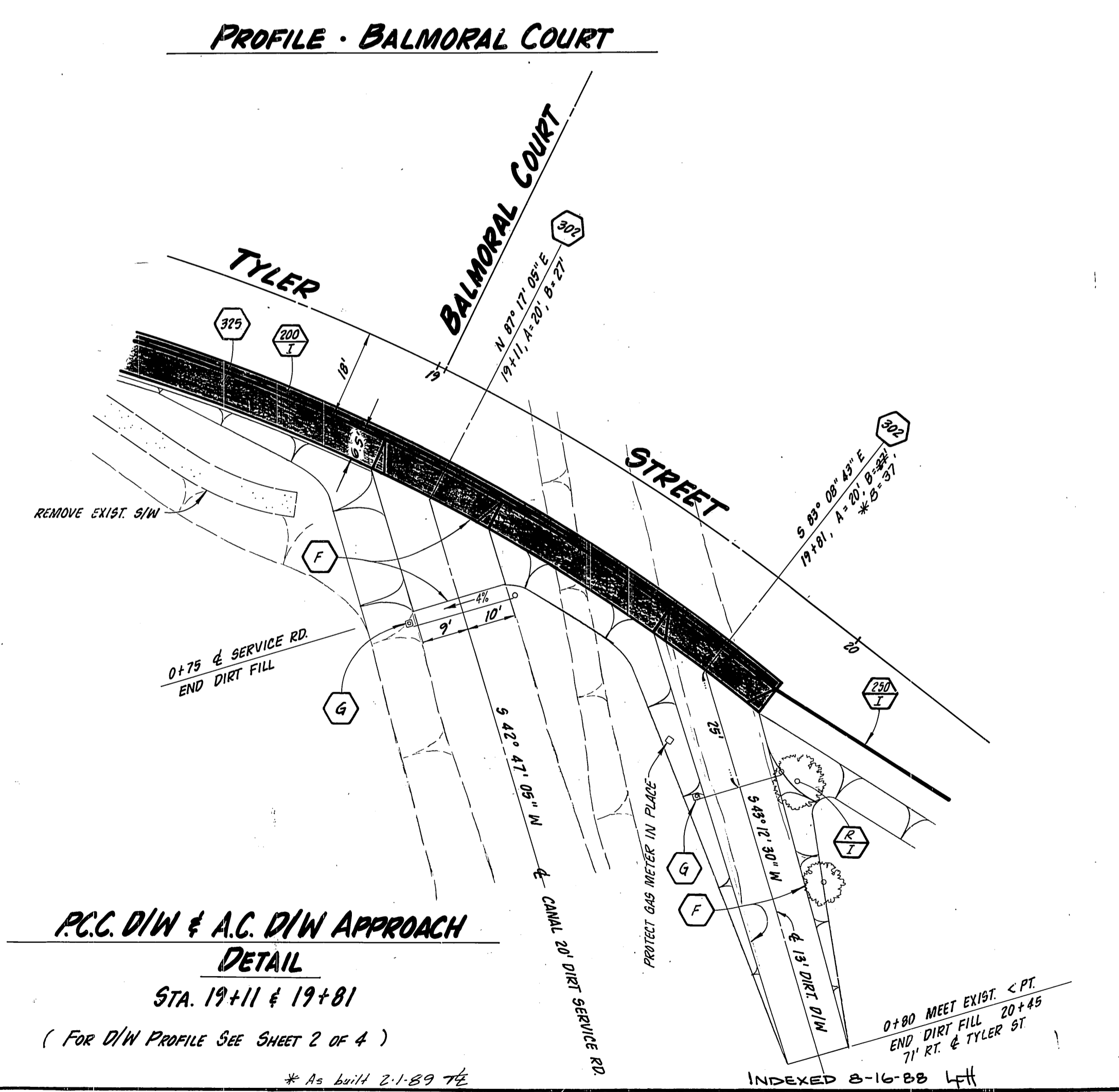
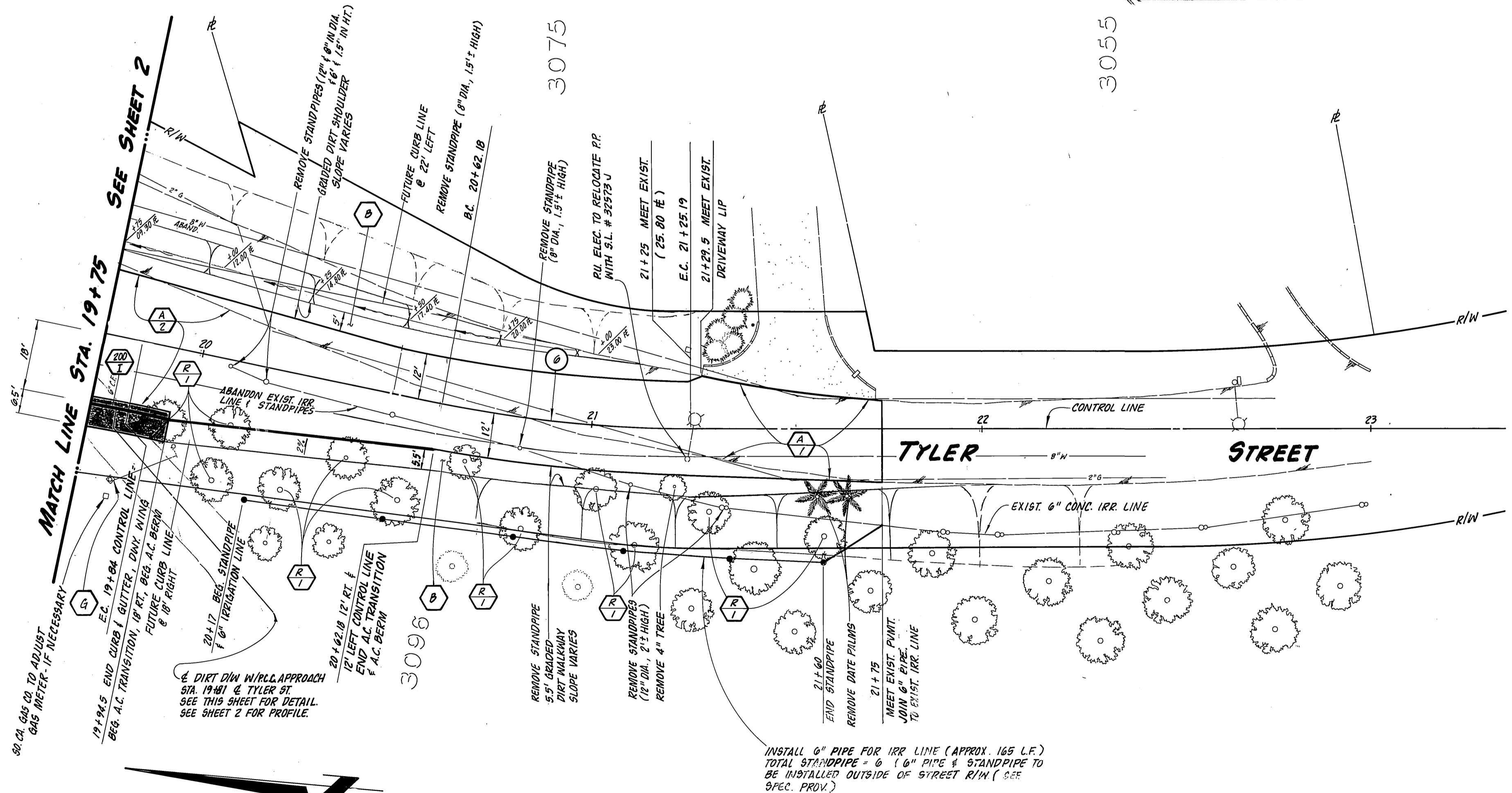
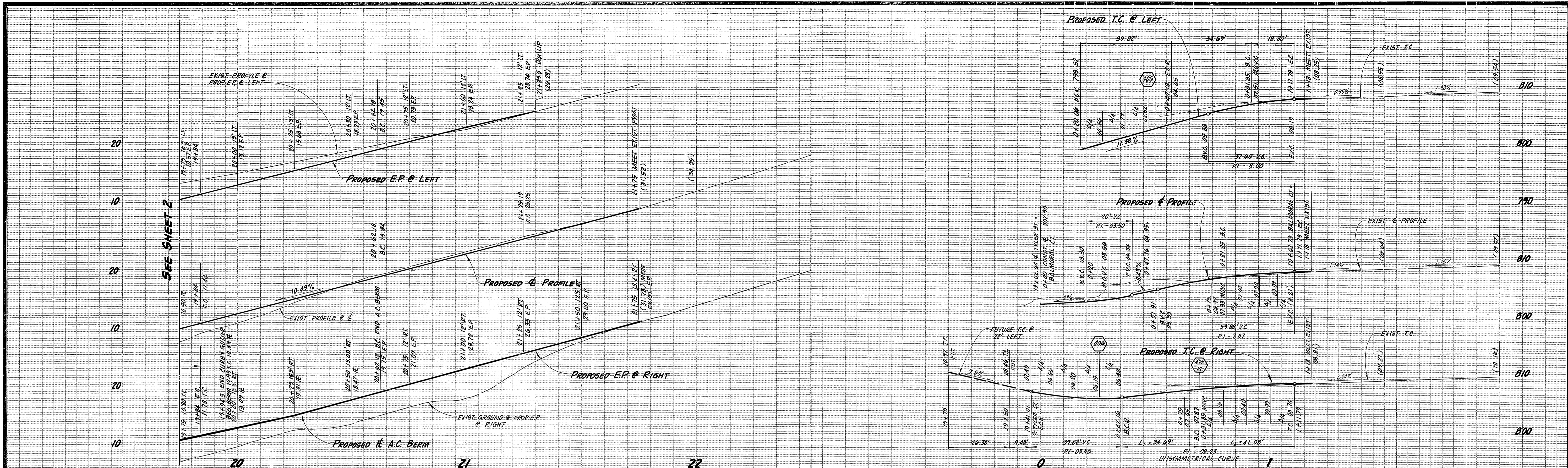


CURVE DATA				
INDEX	Δ	R	T	L
1	41° 00' 00"	400'	149.55'	206.23'
2	22° 00' 00"	175'	34.02'	07.20'
3	101° 06' 32"	35'	42.54'	61.76'
4	06° 30' 16"	27'	24.53'	39.82'
5	04° 30' 14"	27'	24.53'	39.82'
6	12° 01' 58"	300'	31.62'	63.00'
7	39° 53' 47"	43'	15.61'	29.34'
8	39° 53' 47"	27'	9.80'	19.80'
9	39° 53' 47"	59'	21.41'	41.08'
10	19° 00' 00"	382'	63.92'	126.60'

INDEXED 8-16-88 LF

CITY OF RIVERSIDE		TYLER STREET REALIGNMENT	
PUBLIC WORKS DEPARTMENT		At RIVERSIDE WATER COMPANY CANAL	
APPROVED BY	DATE	BY	DATE
PRINCIPAL ENGINEER	7-18-88	DAVID BEL	7-18-88
PARK DEPARTMENT		PUBLIC WORKS DIRECTOR	
TRAFFIC DIVISION		DATE	7/18/88
INSPECTION			
SURVEY			
DESIGNED BY	DRAWN BY	CHECKED BY	
P.U. WATER DEPT.		5-9-80 116	
P.U. ELECTRIC DEPT.		5-4-80 82	
		7-15	

ACCOUNT NO. 30-575-393-10
R-2905
SHEET 2 OF 5



60' OR GREATER TO ADJUST
645' MEET IF NECESSARY

19+94.5 END CURB CUTTER, 19' W/ING
BEG. A.C. TRANSITION, 18' RT, BEG. A.C. BERM
FUTURE CURB LINE
8' RT

20+17.0 BEG. STANDPIPE
1" 6" IRRIGATION LINE

20+162.18 12' RT &
12' LEFT CONTROL LINE
END A.C. TRANSITION
& A.C. BERM

4" DIET DIM W/ILL APPROACH
STA. 19+81 & TYLER ST.
SEE THIS SHEET FOR DETAIL.
SEE SHEET 2 FOR PROFILE.

INSTALL 6" PIPE FOR IRR LINE (APPROX 165 LF)
TOTAL STANDPIPE = 6" (6" PIPE & STANDPIPE TO
BE INSTALLED OUTSIDE OF STREET R/W (SEE
SPEC. PROV.)

P.C.C. DIM & A.C. DIM APPROACH
DETAIL
STA. 19+11 & 19+81
(FOR DIM PROFILE SEE SHEET 2 OF 4)

CITY OF RIVERSIDE
PUBLIC WORKS DEPARTMENT

TYLER STREET
REALIGNMENT

ACCOUNT NO. 30-575-393-10

R-2905

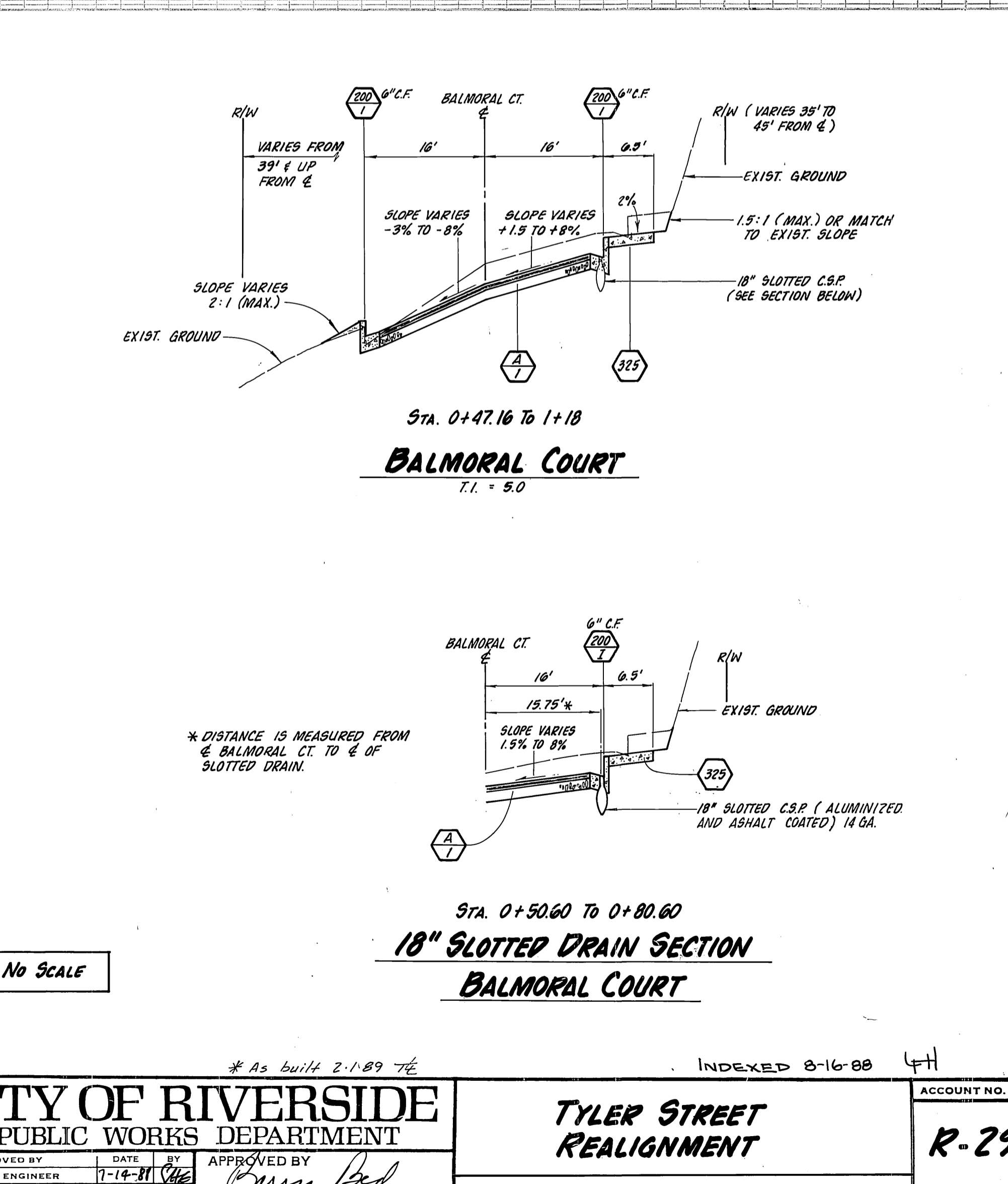
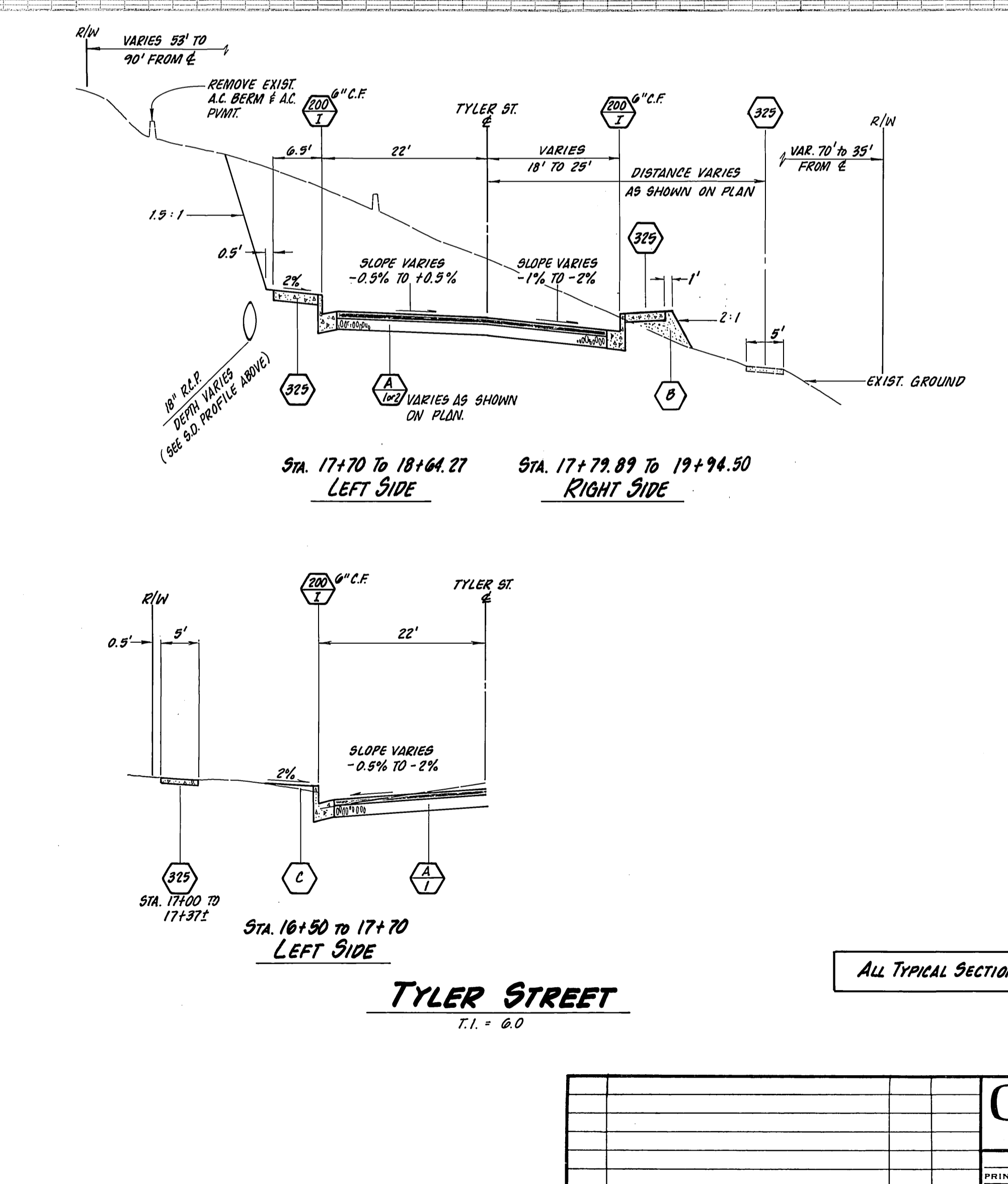
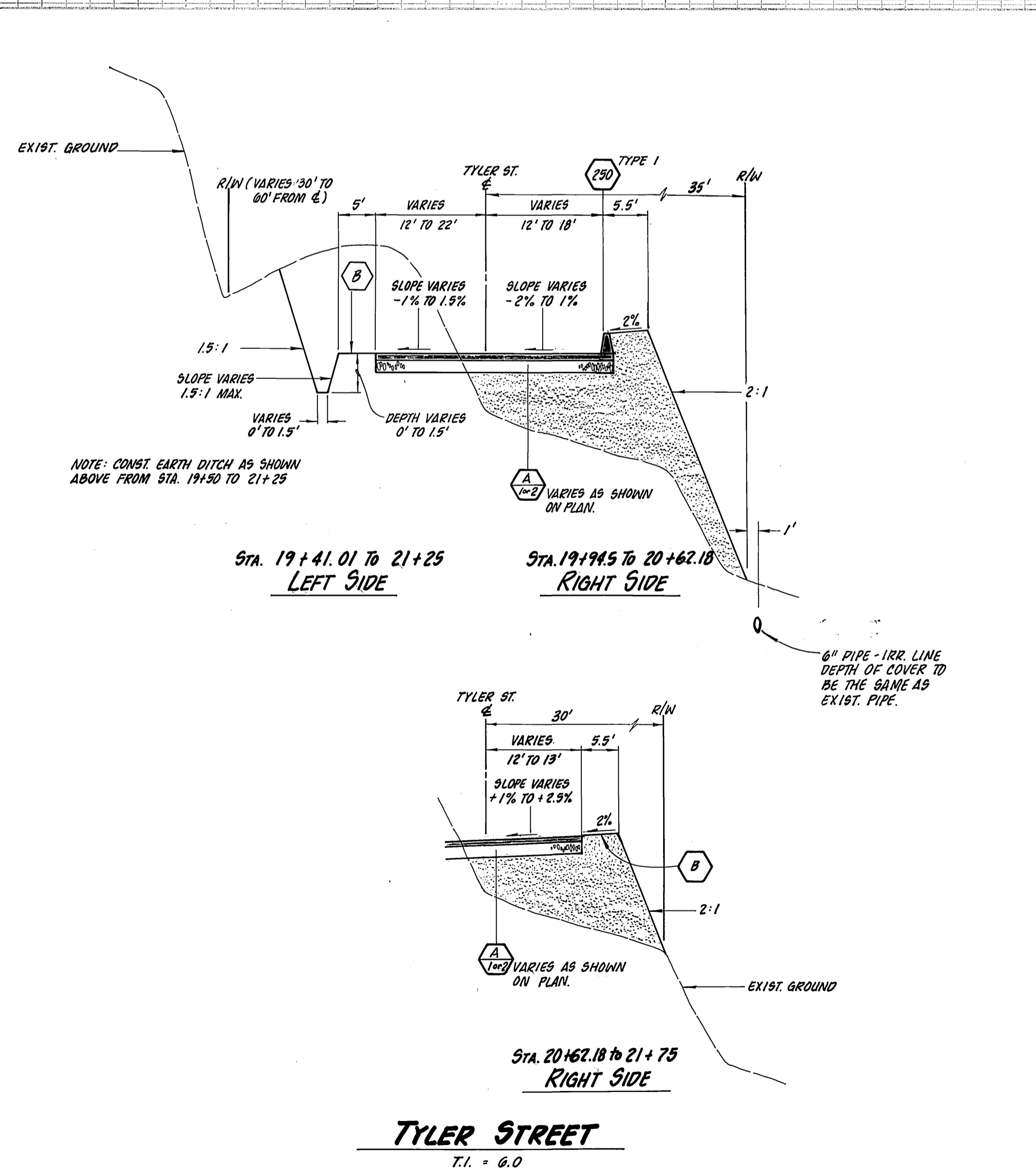
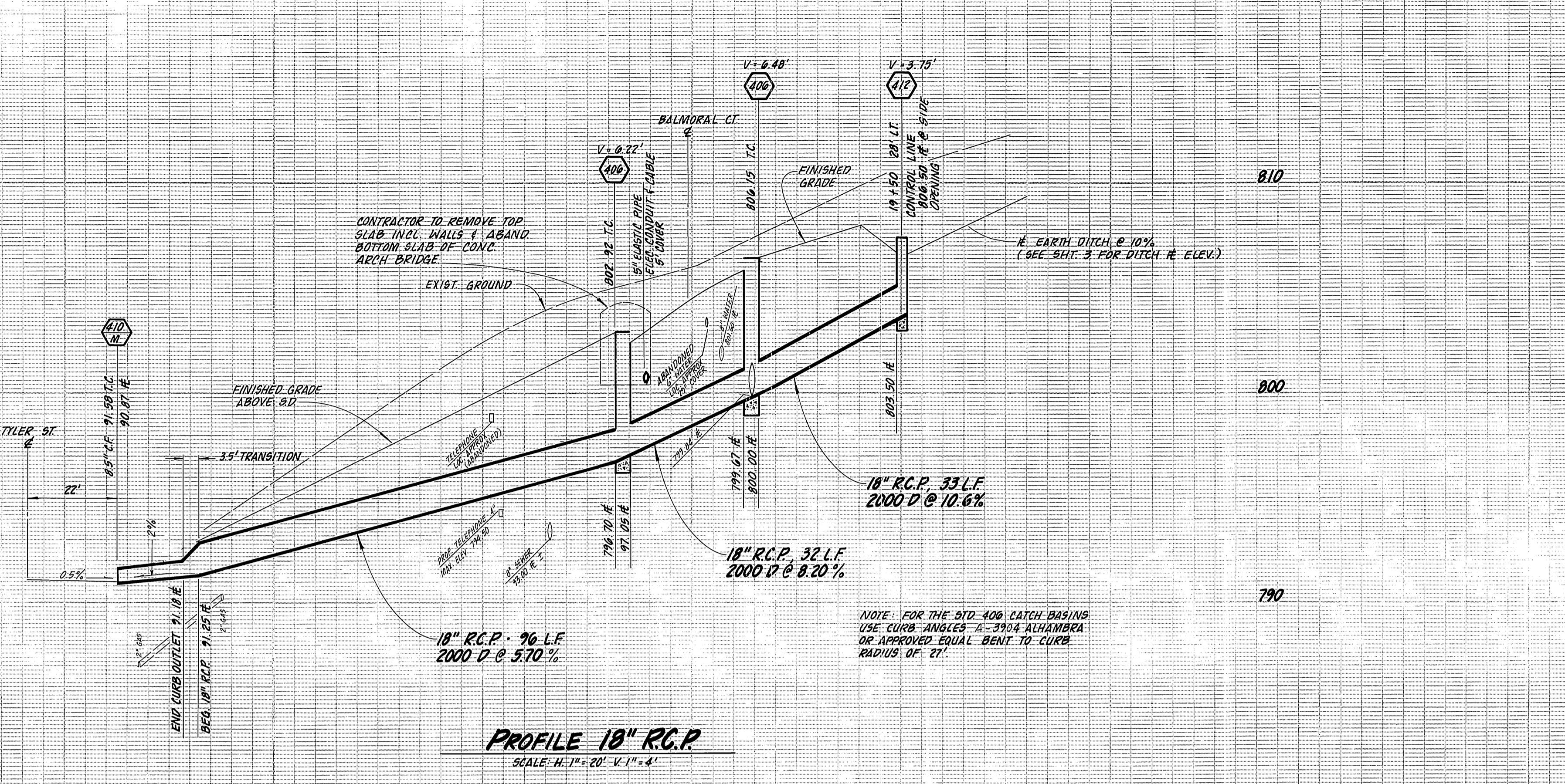
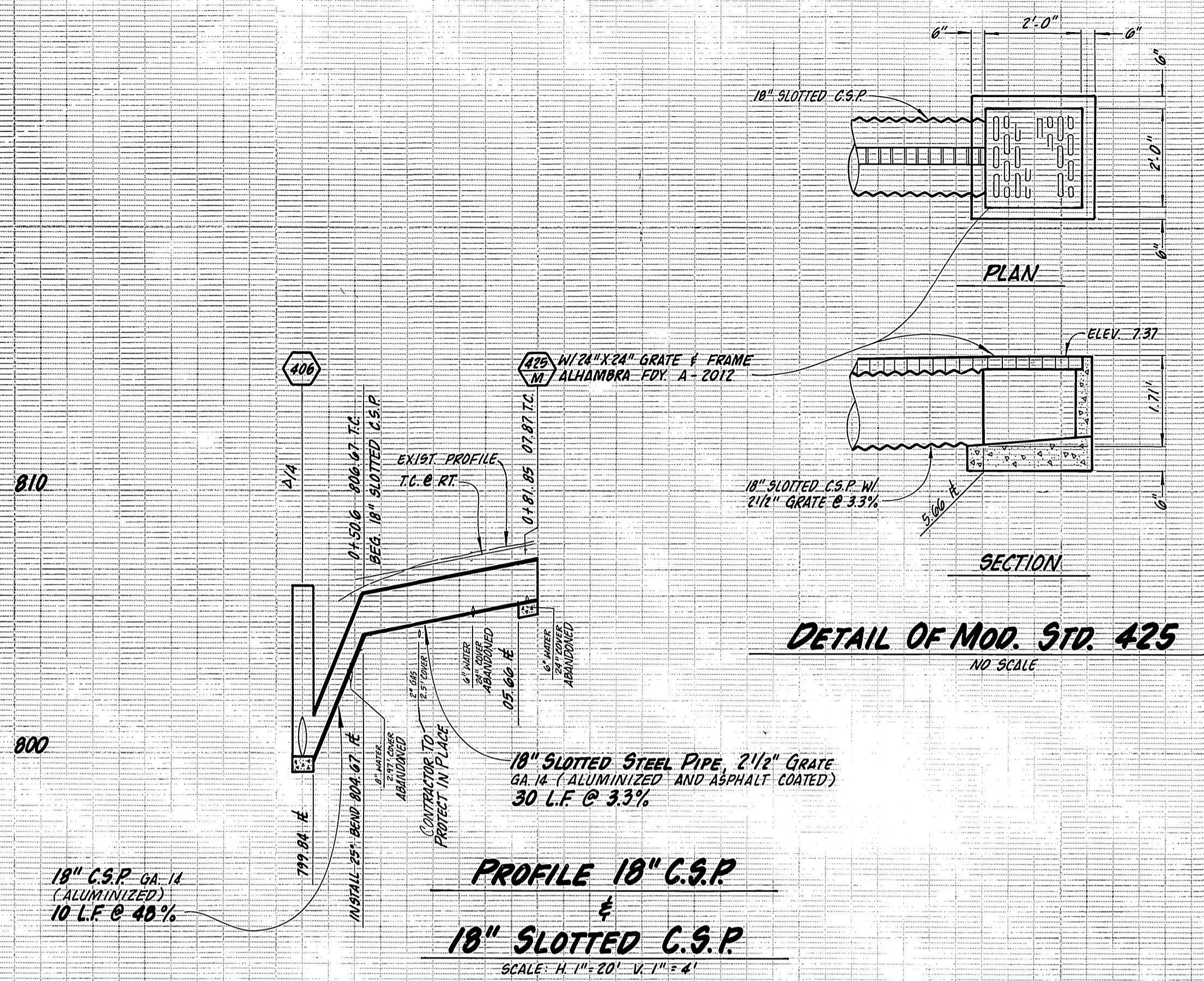
APPROVED BY	DATE	BY
PRINCIPAL ENGINEER	7-14-88	Barry Bed
PARK DEPARTMENT	7-14-88	
TRAFFIC DIVISION	7-14-88	
DESIGNED BY	REVISIONS	APPR. DATE
DRAWN BY		CHECKED BY
SURVEY	7-12-88	
R/W WATER DEPT	3/9/88	
R/W ELECTRIC DEPT	4/15/88	

APPROVED BY	DATE
PUBLIC WORKS DIRECTOR	7/18/88

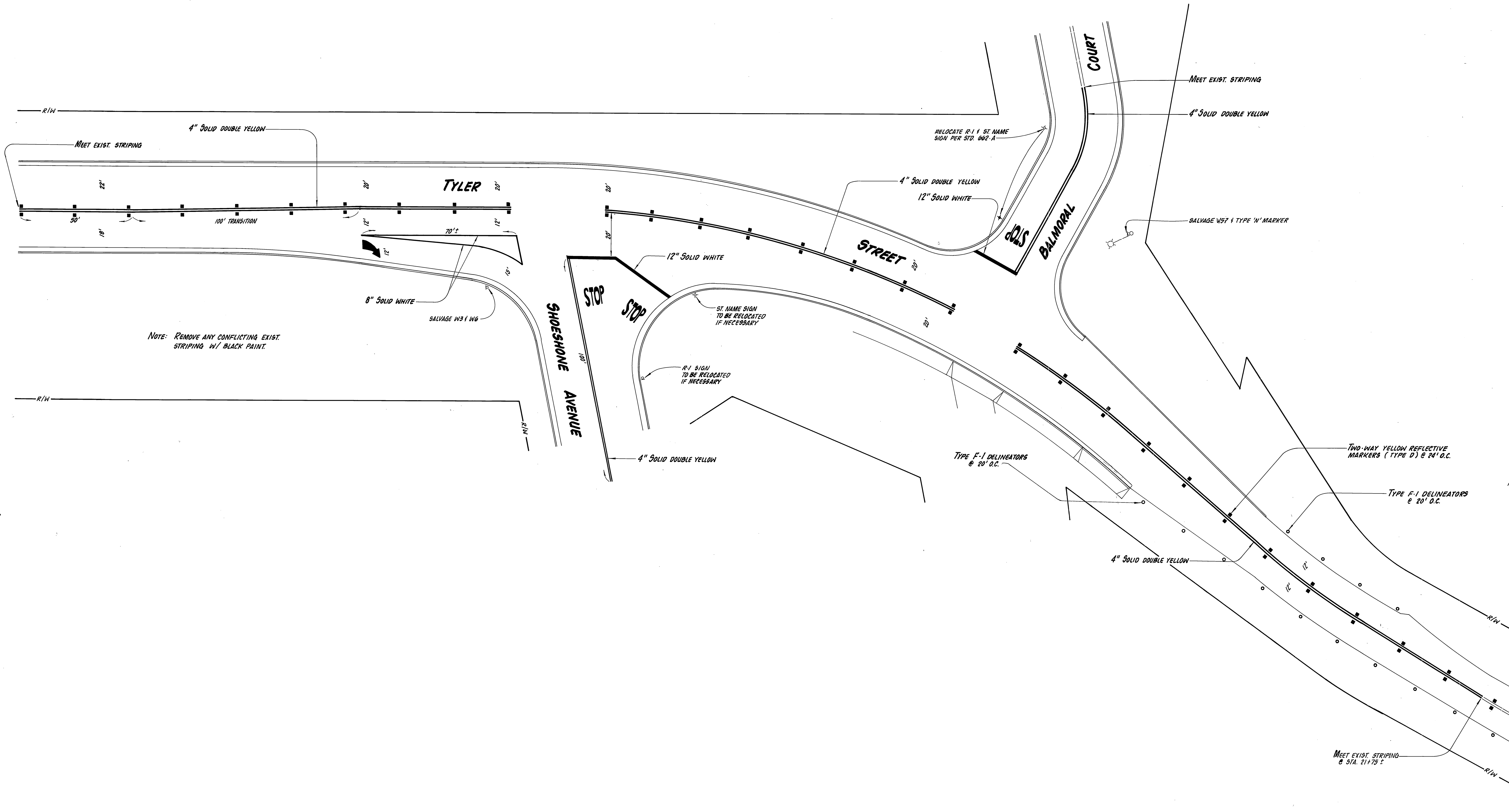
At RIVERSIDE WATER COMPANY CANAL

HORIZ. SCALE: 1" = 20' VERT. SCALE: 1" = 8'

SHEET 3 OF 5



CITY OF RIVERSIDE PUBLIC WORKS DEPARTMENT		TYLER STREET REALIGNMENT DETAIL SHEET		ACCOUNT NO. 30-575-393-10 R-2905
APPROVED BY PRINCIPAL ENGINEER PARK DEPARTMENT TRAFFIC DIVISION DESIGNED BY DRAWN BY CHECKED BY	DATE 7-14-88 7-14-88 7/13/88 7/14/88	APPROVED BY PUBLIC WORKS DIRECTOR DATE 7/18/88	INDEXED 8-16-88 4H	SHEET 4 OF 5
ALL TYPICAL SECTIONS: NO SCALE		SCALE: AS SHOWN		7-15



NOTE: REMOVE ANY CONFLICTING EXIST. STRIPING W/ BLACK PAINT.

<p style="text-align: center;">CITY OF RIVERSIDE PUBLIC WORKS DEPARTMENT</p>				<p style="text-align: center;">TYLER STREET REALIGNMENT</p>		<p>ACCOUNT NO. 30-575-323-10 XL-211 (R-2905)</p>	
<p>APPROVED BY _____ DATE 7-14-88 BY <i>[Signature]</i></p>		<p>APPROVED BY _____ DATE 7/14/88 BY <i>[Signature]</i></p>		<p>STRIPING PLAN</p>		<p>SHEET 5 OF 5</p>	
<p>PRINCIPAL ENGINEER _____</p>		<p>TRAFFIC DIVISION _____</p>		<p>PUBLIC WORKS DIRECTOR _____</p>		<p>HORIZ. SCALE: 1" = 20' VERT. SCALE: 1" = _____</p>	
<p>DESIGNED BY <i>B.G.</i> DRAWN BY <i>[Signature]</i> CHECKED BY _____</p>		<p>INSPECTION _____ DATE 7/14/88</p>		<p>DATE 7/14/88</p>		<p>INDEXED 8-16-88 <i>4H</i></p>	

02410-NO.2