

PROPERTY OF
CITY OF RIVERSIDE
CITY ENGINEERING DEPT.

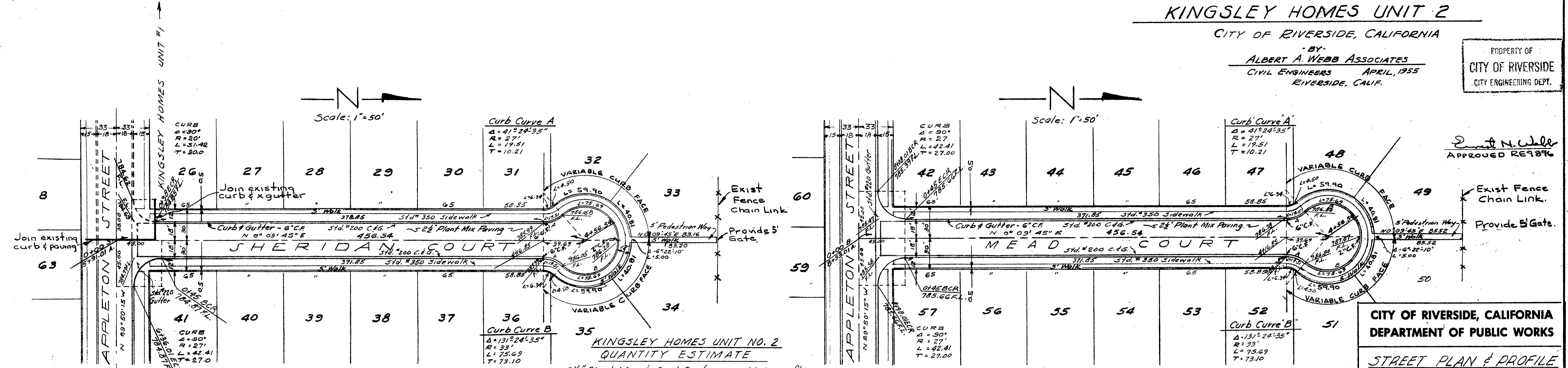
SHEET 2 OF 2 SHEETS
STREET PLANS & PROFILES
OF
SHERIDAN COURT & MEAD COURT
IN
KINGSLEY HOMES UNIT 2

CITY OF RIVERSIDE, CALIFORNIA

BY
ALBERT A WEBB ASSOCIATES
CIVIL ENGINEERS APRIL, 1955
RIVERSIDE, CALIF.

PROPERTY OF
CITY OF RIVERSIDE
CITY ENGINEERING DEPT.

DATE	
BY	
REVISIONS	
NO.	
DESCRIPTION	
DATE	
BY	
NO.	
DESCRIPTION	
DATE	
BY	
NO.	
DESCRIPTION	
DATE	
BY	
NO.	
DESCRIPTION	



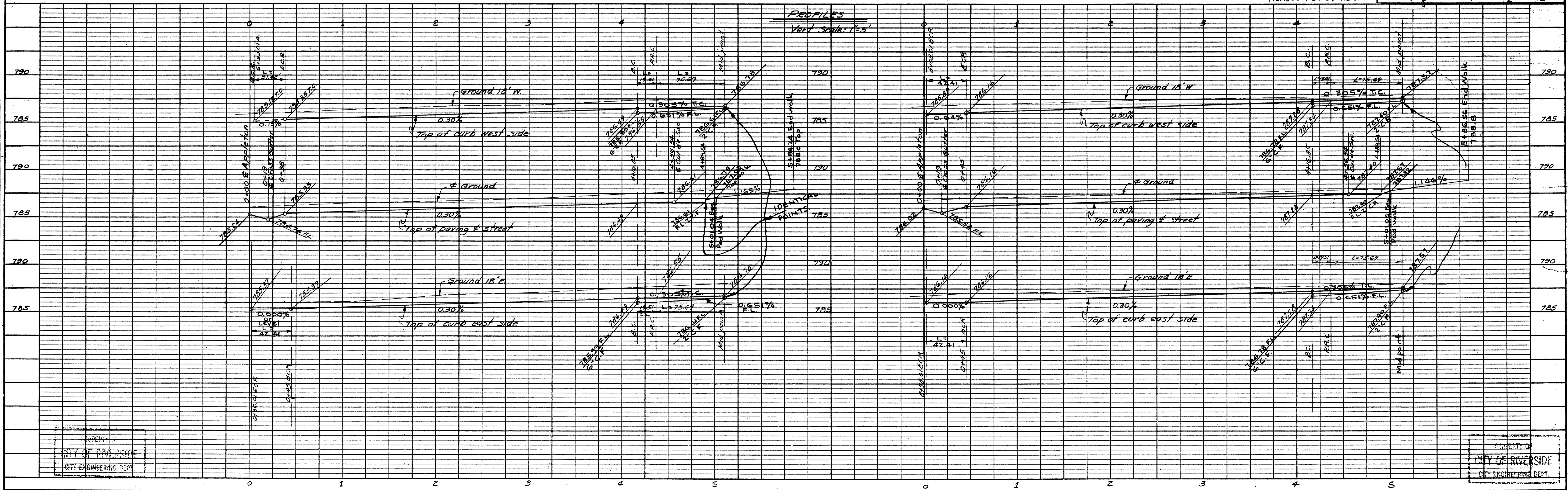
QUANTITY ESTIMATE

2 1/2" Plant Mix & Seal Coat	44,611 sq. ft.
Curb & Gutter Std. #200	2,642 lin. ft.
Concrete Sidewalk std. #350	13,675 sq. ft.
Concrete X Gutter std. #220	830 sq. ft.
Imported Base Material	1,360 cu. yds.
Excavation	4,500 cu. yds.
Barricade Std. #180	1

CITY OF RIVERSIDE, CALIFORNIA
DEPARTMENT OF PUBLIC WORKS
STREET PLAN & PROFILE
SHERIDAN COURT
MEAD COURT
KINGSLEY HOMES UNIT 2

APPROVED BY
[Signature]
DIRECTOR OF PUBLIC WORKS
NO. **R-294**
DATE May 28, 1959 SHEET 2 OF 2

DATE	
BY	
REVISIONS	
NO.	
DESCRIPTION	
DATE	
BY	
NO.	
DESCRIPTION	
DATE	
BY	
NO.	
DESCRIPTION	
DATE	
BY	
NO.	
DESCRIPTION	



PROPERTY OF
CITY OF RIVERSIDE
CITY ENGINEERING DEPT.

PROPERTY OF
CITY OF RIVERSIDE
CITY ENGINEERING DEPT.