

RIVERSIDE



CALIFORNIA

GENERAL NOTES

- CONSTRUCTION SHALL BE IN ACCORDANCE WITH THE CITY OF RIVERSIDE STANDARD DRAWINGS AND STANDARD SPECIFICATIONS FOR PUBLIC WORKS CONSTRUCTION, 1988 EDITION, INCLUDING 1989 & 1990 SUPPLEMENTS. (SEE SPEC. PROV.)
- NUMBERS ABOVE 100 IN A HEXAGON ON THE PLAN REFER TO THE RESPECTIVE STANDARD DRAWING AND SHALL BE CONSTRUCTED ACCORDINGLY; UNLESS MODIFICATIONS ARE NOTED ON THE PLAN. ANY NUMBER SHOWN BELOW THE STANDARD DRAWING NUMBER INDICATES THE SPECIFIC ALTERNATE TO BE CONSTRUCTED.
- CUT AND FILL SLOPES ARE 2:1, UNLESS OTHERWISE SHOWN ON PLANS.
- ALL ELEVATIONS ON THE PLAN SHALL BE STAKED IN THE FIELD.
- CONFLICTING UTILITIES IN THE CONSTRUCTION AREA SHALL BE RELOCATED OR ABANDONED.
- EXISTING UTILITIES SHOWN ON THE PLAN ARE PLOTTED FROM UTILITY RECORDS. THE CONTRACTOR IS REQUIRED TO TAKE DUE PRECAUTIONARY MEASURES TO LOCATE AND PROTECT ALL UTILITIES WHETHER OR NOT SHOWN ON THIS PLAN. IF A COVER OF A UTILITY IS KNOWN, IT IS SHOWN IN THE TYPICAL SECTIONS.

PUBLIC WORKS DEPARTMENT

HARRISON STREET WIDENING

FROM MAGNOLIA AVE. TO GARFIELD AVE.

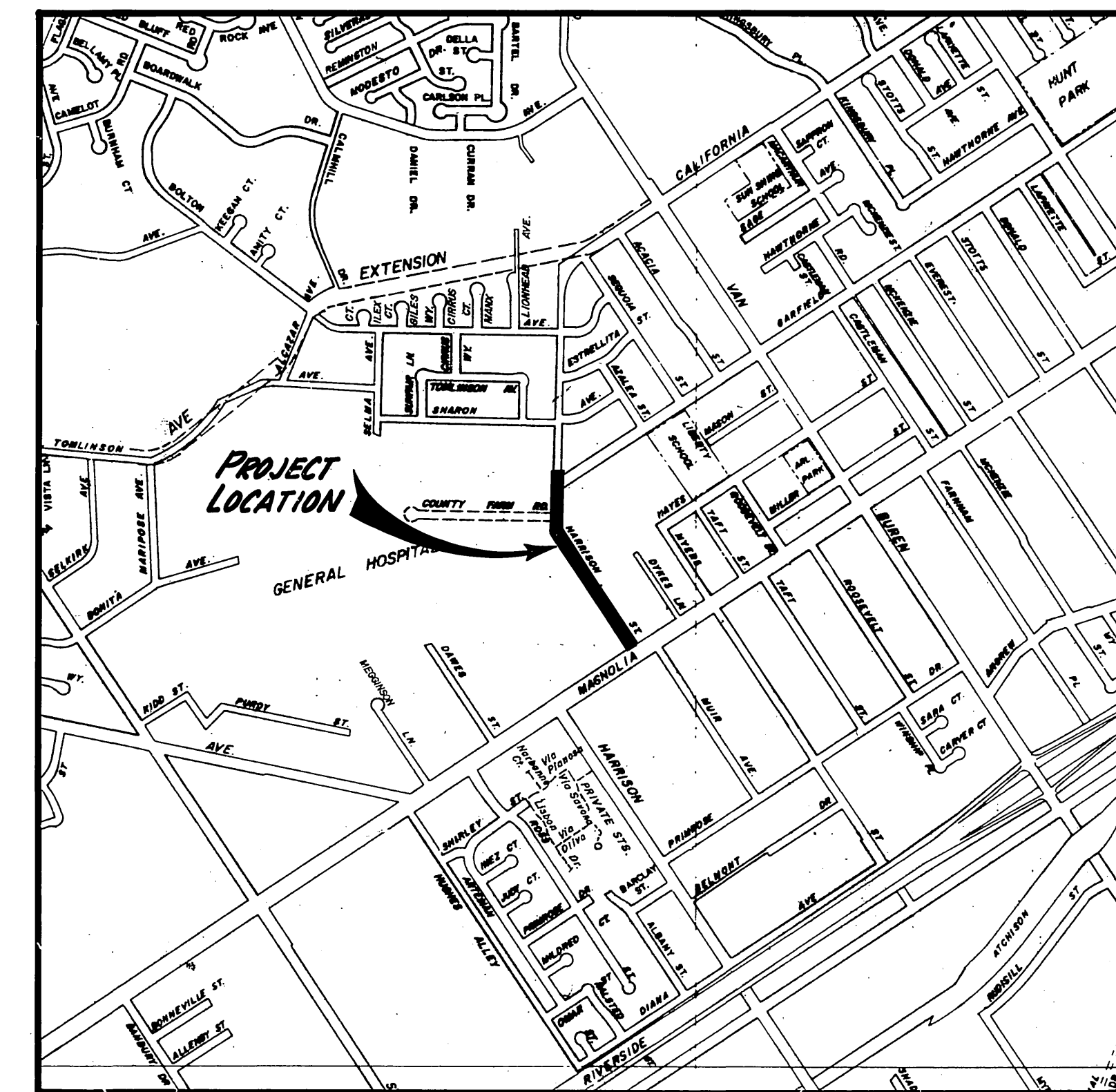
T.I. = 8.0

CONSTRUCTION NOTES

- CONSTRUCT STRUCTURAL SECTION OF 0.30' A.C. OVER 0.45' AGGREGATE BASE. EXISTING A.C. TO REMAIN WHERE SHOWN ON THE PLAN.
- REMOVE EXISTING A.C. AND REPLACE WITH STRUCTURAL SECTION OF 0.30' A.C. OVER 0.45' AGGREGATE BASE.
- PLACE 0.17' D.G.A.C. OVER PAVEMENT REINFORCING FABRIC OVER A LEVELING COURSE.
- REMOVE EXISTING A.C. AND REPLACE WITH 0.5' A.C. OVER NATIVE MATERIAL.
- OVERLAY EXISTING A.C. WITH A VARIABLE THICKNESS OF A.C. (MIN. OVERLAY SHALL BE 0.08' THICK).
- CONSTRUCT CONCRETE BLOCK WALL (SPLIT FACE BLOCK) PER STD. DWG. 707. H=6', B=3'-6", T=8", 3" DIA. X 3' LONG PIPE SLEEVE SHALL BE MOUNTED ON TOP OF THE BLOCK WALL TO ACCOMMODATE A 6" HIGH CHAIN LINK FENCE IN THE FUTURE.
- THIS AREA IS LANDSCAPED AND HAS AN ACTIVE SPRINKLER SYSTEM. CONTRACTOR SHALL RESTORE LANDSCAPED AND IRRIGATED AREAS TO PRIOR CONDITION SUCH THAT ADEQUATE LANDSCAPING AND IRRIGATION COVERAGE ARE PROVIDED. EXISTING ROCKS (@ CONV. HOSPT.) IN CONFLICT WITH CONSTRUCTION SHALL BE REMOVED AND PLACED ON ADJACENT PROPERTY. EXACT LOCATION TO BE DETERMINED IN THE FIELD. RESEED BARE AREAS WITH GRASS SEED TO MATCH EXISTING.
- CONSTRUCT STRUCTURAL SECTION OF 0.21' A.C. OVER 0.45' AGGREGATE BASE. REMOVE EXISTING LANDSCAPING INCLUDING CONCRETE PAVEMENT, CURB AND SMALL TREES.
- CONSTRUCT PCC DRIVEWAY APPROACH PER STD. 302. DEPRESS BACK OF D/W APPROACH AS INDICATED ON THE PLAN.
- CONSTRUCT 0.29' P.C.C. OVER COMPACTED FILL MATERIAL @ ISLAND FROM STA. 7+92 TO STA. 9+86.
- RECONSTRUCT EXISTING DROP INLET AT STA. 7+94 AS SHOWN ON THE PLAN AND MODIFIED DROP INLET DETAIL. EXISTING CHAIN LINK GATE (H=6") TO BE ADJUSTED VERTICALLY 1" TO CLEAR TOP OF DROP INLET.
- ADJUST PUMP WELL COVER (DIA. = 6") TO MATCH PROPOSED SIDEWALK GRADE APPROX. 0.67' ± VERTICALLY. REMOVE 4-3" DRAINS THAT INTERFERE WITH CONSTRUCTION AND CUT FLUSH WITH PROPOSED CURB FACE. INSTALL 4-3" DRAINS IF NECESSARY AND CONNECT TO EXISTING 3" OUTLET PIPE LINES AT THE PUMP WELL. ADJUST ELECTRICAL JUNCTION BOX AND CONDUIT TO CLEAR S/W CONSTRUCTION.
- CONSTRUCT WHEELCHAIR RAMP PER STD. DWG. NO. 304 AND AS SHOWN ON THE MODIFIED WHEELCHAIR RAMP DETAIL. (SEE SPEC. PROV.)
- RECONSTRUCT EXISTING UTILITY TUNNEL AT STA. 6+15 AS SHOWN ON THE PLAN AND UTILITY VAULT DETAIL. EXISTING UTILITY VAULT TO BE ABANDONED. EXISTING 6" AND 4" WATER VALVES, BACKFLOW PREVENTER, AND OTHER ACCESSORIES SHALL BE REMOVED AND DISPOSED OF BY THE CONTRACTOR. (SEE SPEC. PROV.)
- RELOCATE FLAGPOLE. EXACT LOCATION TO BE DETERMINED IN THE FIELD. CONTRACTOR TO CONSTRUCT PCC FOUNDATION 2.5' IN DIA. AND 5" DEEP, INCLUDING 2.5' WIDE WALKWAY FROM BACK OF SIDEWALK TO BASE OF FLAGPOLE.
- ADJUST SEWER MANHOLE COVER TO GRADE. ¹⁶/_A RECONSTRUCT SEWER M.H. COVER TO GRADE.
- ADJUST WATER GATE VALVE COVER TO GRADE. ¹⁷/_A P.U. WATER DEPT. TO PLUG WATER OR FIRE SERVICES & SALVAGE G.V.
- SOUTHERN CALIFORNIA GAS CO. TO RELOCATE OR ADJUST TO GRADE.
- SALVAGE OR RELOCATE SIGNS AS SHOWN ON THE PLAN, PER SPECIAL PROVISIONS AND AS DIRECTED BY THE ENGINEER.
- PUBLIC UTILITIES WATER TO SALVAGE 4" FIRE SERVICE. CONTRACTOR TO REMOVE VAULT, BACKFILL AND COMPACT IMPORTED FILL MATERIAL.
- CONSTRUCT 6' x 10' VAULT PER CWD-801 @ STA. 6+00.50.
- CONSTRUCT 4" WATER SERVICE PER CWD-620. USE FEBCO MODEL #825 YD OR APPROVED EQUAL. SEE EXHIBIT "C" FOR MODIFIED DIMENSIONS.
- CONSTRUCT 6" FIRE SERVICE PER CWD-610. USE FEBCO MODEL #806 YD OR APPROVED EQUAL. SEE EXHIBIT "C" FOR MODIFIED DIMENSIONS.
- CONSTRUCT WHEELCHAIR RAMP PER STATE STD. NB-8, CASE 'C'.
- CONTRACTOR TO INSTALL COUNTY OF RIVERSIDE COMMUNICATION LINE. CONDUIT SHALL BE 4" PVC SCH. 80 EXCEPT IN PARKWAY AREA WHERE SCHEDULE 40 WILL BE USED. CABLE SHALL BE 24G. BLACK 200 PAIR FILLED 24G. PULLBOX SHALL BE 32" x 44" BOTTOMLESS, PARKWAY TYPE, ITEM NO. PB-1 W/SC-1 COVER PER UGS-301. DEPTH OF COVER SHALL BE 30" ±.
- CONSTRUCT 4" FIRE SERVICE PER CWD-615. USE FEBCO MODEL #806 YD OR APPROVED EQUAL.

SHEET INDEX

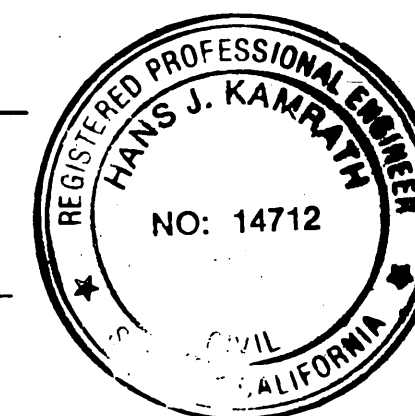
SHEET #	TITLE
STREET PLAN (PLAN: R-3041)	
1.	TITLE SHEET
2.	STREET PLAN & TYPICAL SECTIONS
3.	STREET PLAN
4.	STREET PLAN
5.	UTILITY & WATER VAULT DETAILS
6.	DETAIL SHEET
7.	PARKING LOT STRIPING PLAN
TRAFFIC SIGNAL & STRIPING (PLANS: X-339 & XL-257)	
1.	TRAFFIC SIGNAL PLAN
1.	STRIPING & SIGNING PLAN
PUBLIC UTILITIES, ELECTRIC (PLAN: L5-1061)	
1.	ORNAMENTAL STREET LIGHTING PLAN
2.	ORNAMENTAL STREET LIGHTING PLAN



VICINITY MAP

ENGINEER IN RESPONSIBLE CHARGE

 HANS J. KAMRATH
 R.C.E. 14712 EXPIRES 3/31/93
 DATE 2/26/1991



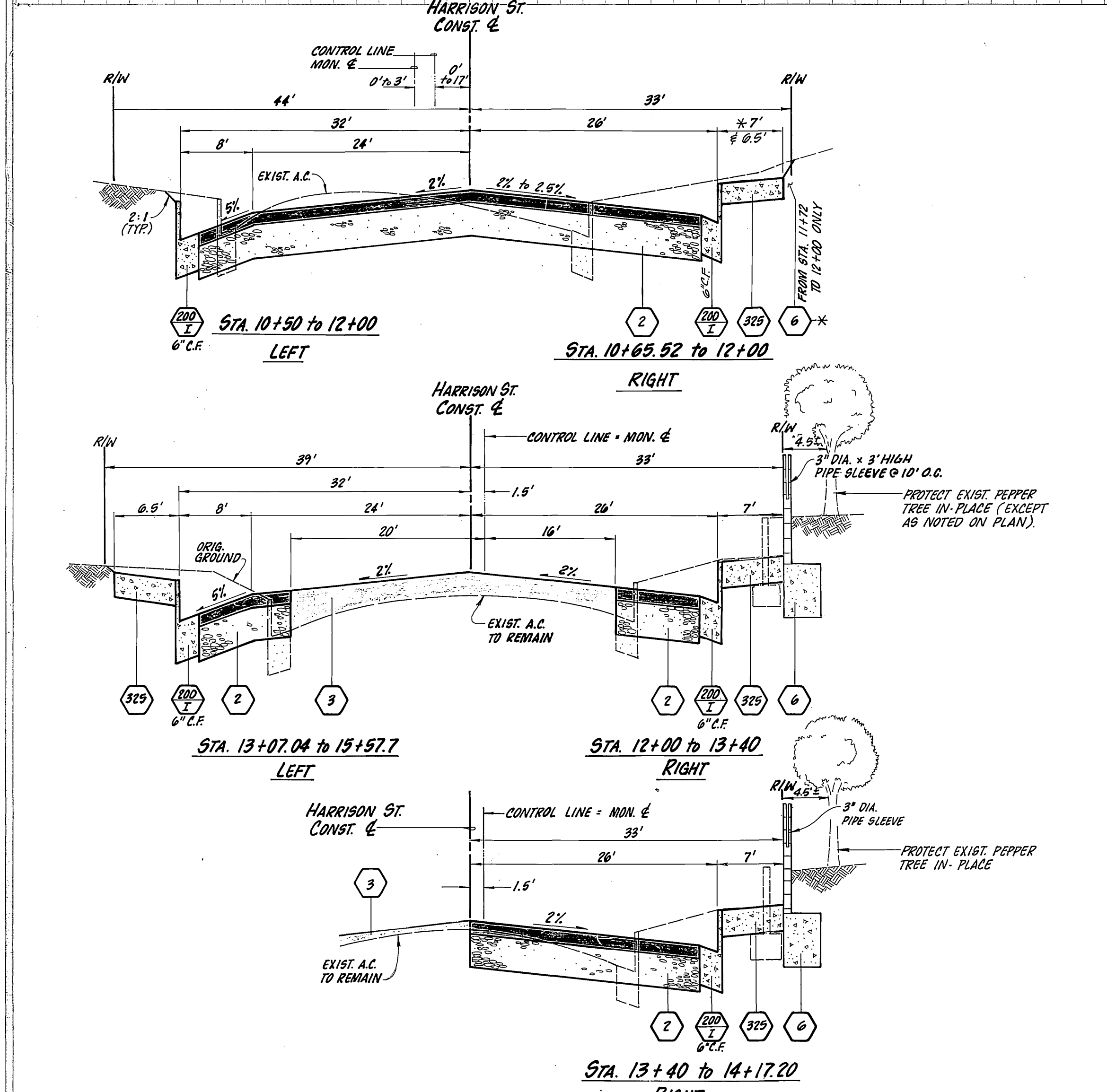
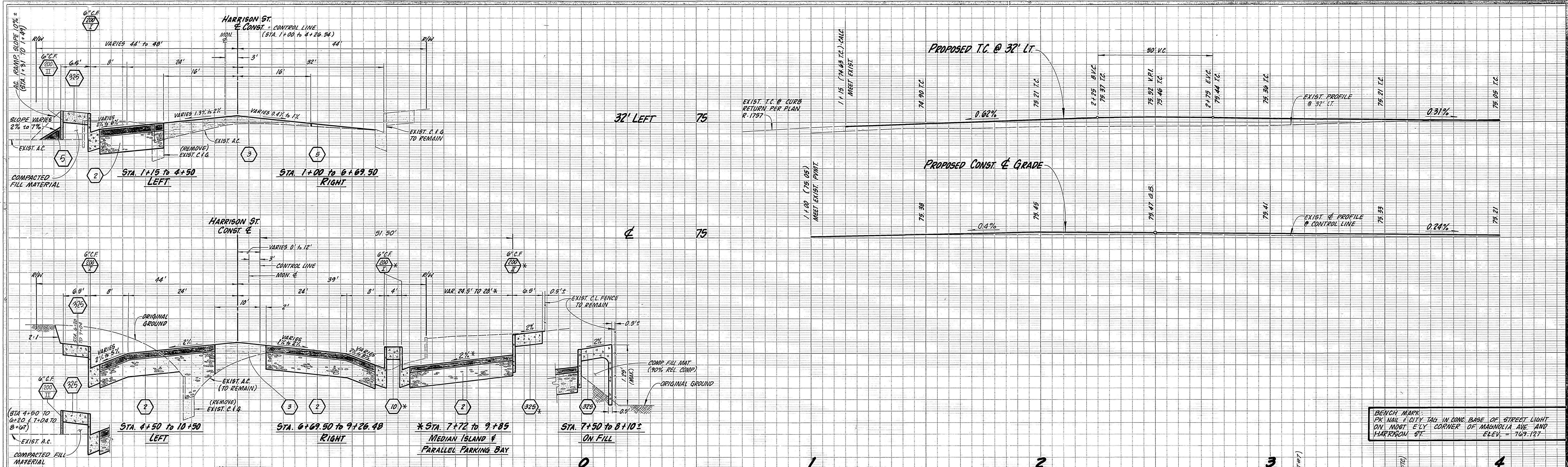
MARK	REVISIONS	APPR.	DATE

CITY OF RIVERSIDE PUBLIC WORKS DEPARTMENT			
APPROVED BY	DATE	BY	APPROVED BY
DEPUTY P.W. DIRECTOR	3/7/91	RHL	
PRINCIPAL ENGINEER	3/8/91	3	PUBLIC WORKS DIRECTOR
CHIEF P.W. INSPECTOR	2-10-91	DE	
SURVEYOR	2-27-91	RPJ	
	3-9-91	012	
TRAFFIC DIVISION			DATE 3/7/91
PARKS DEPARTMENT			
STREET SERVICES	2-27-91	RC	

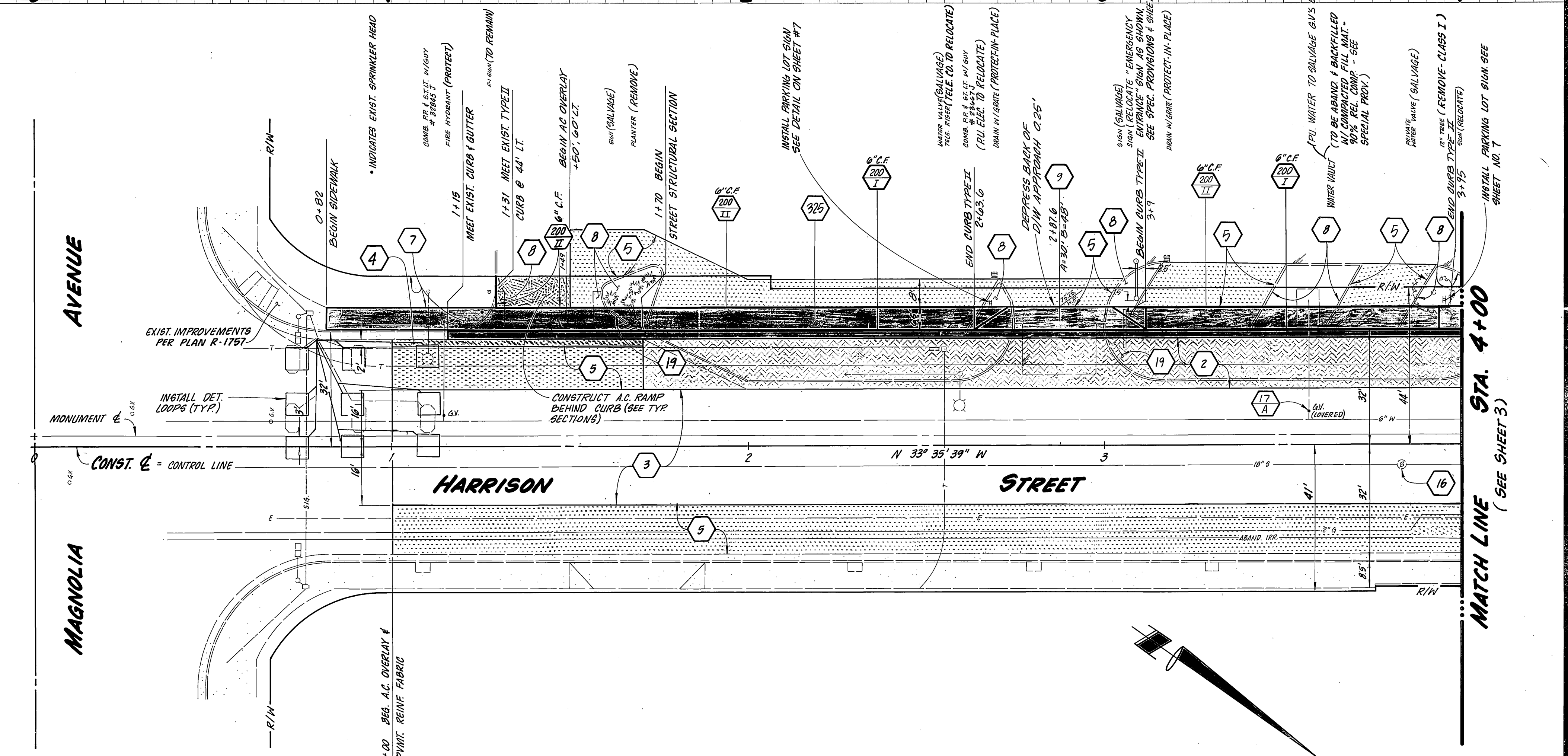
HARRISON STREET WIDENING		ACCOUNT NO. 30-575-790-30
TITLE SHEET		R-3041
SHEET 1 OF 7		

SCALE: 1" = 40' SHOWN

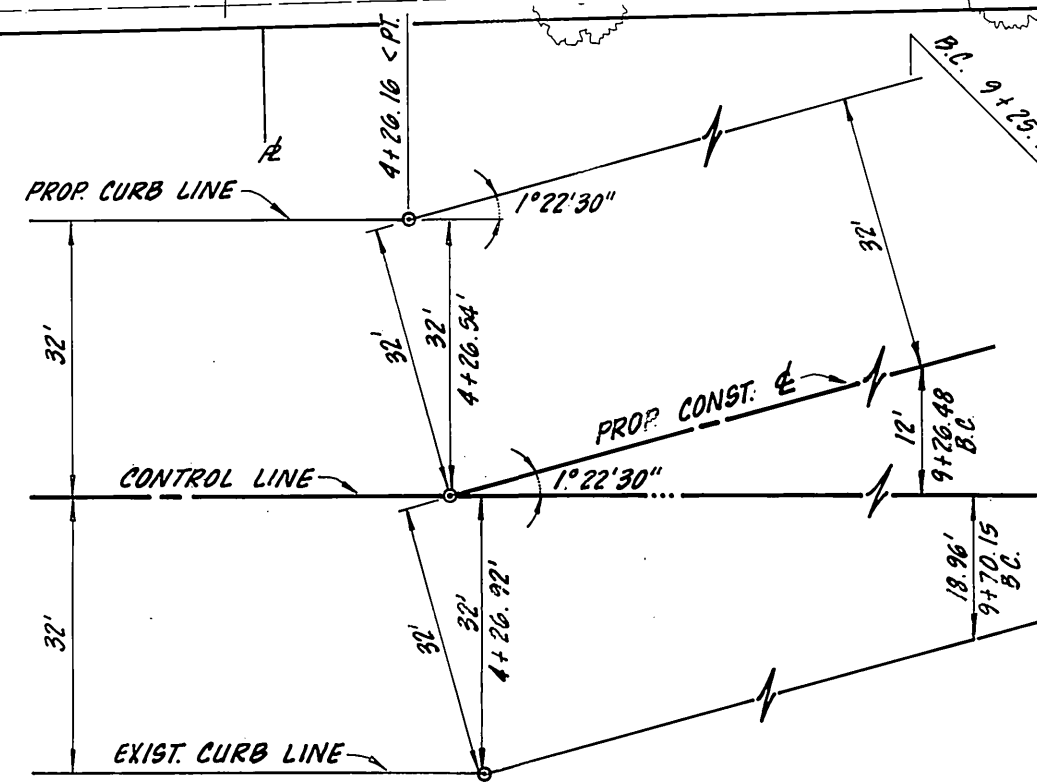
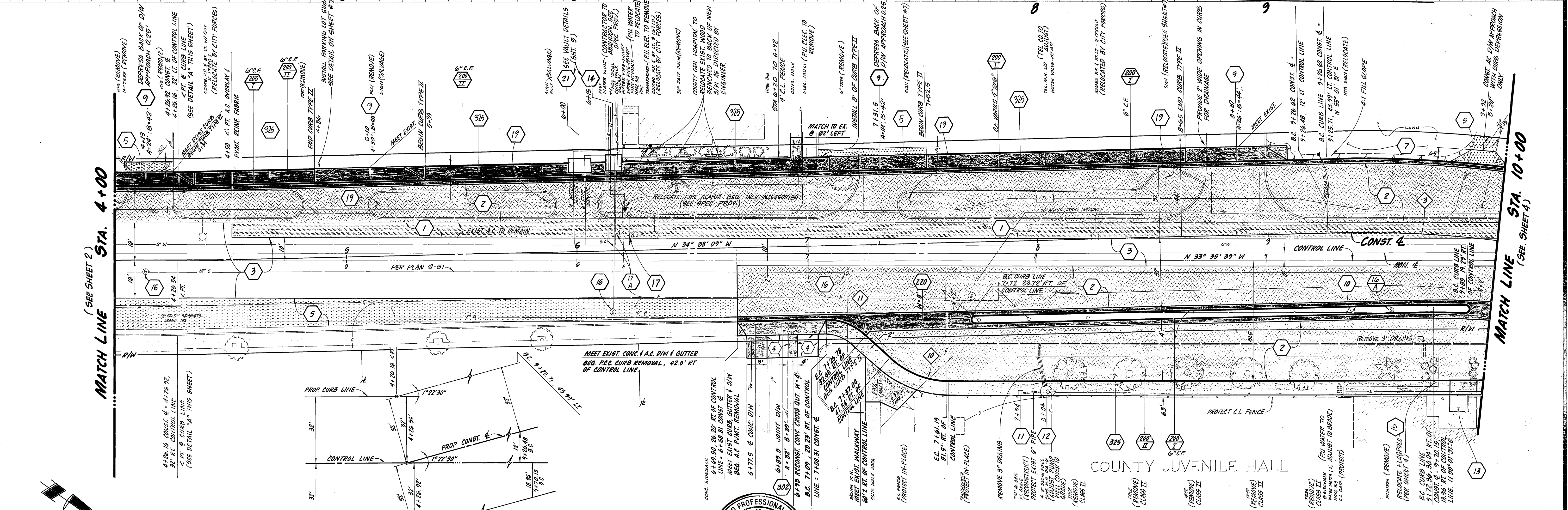
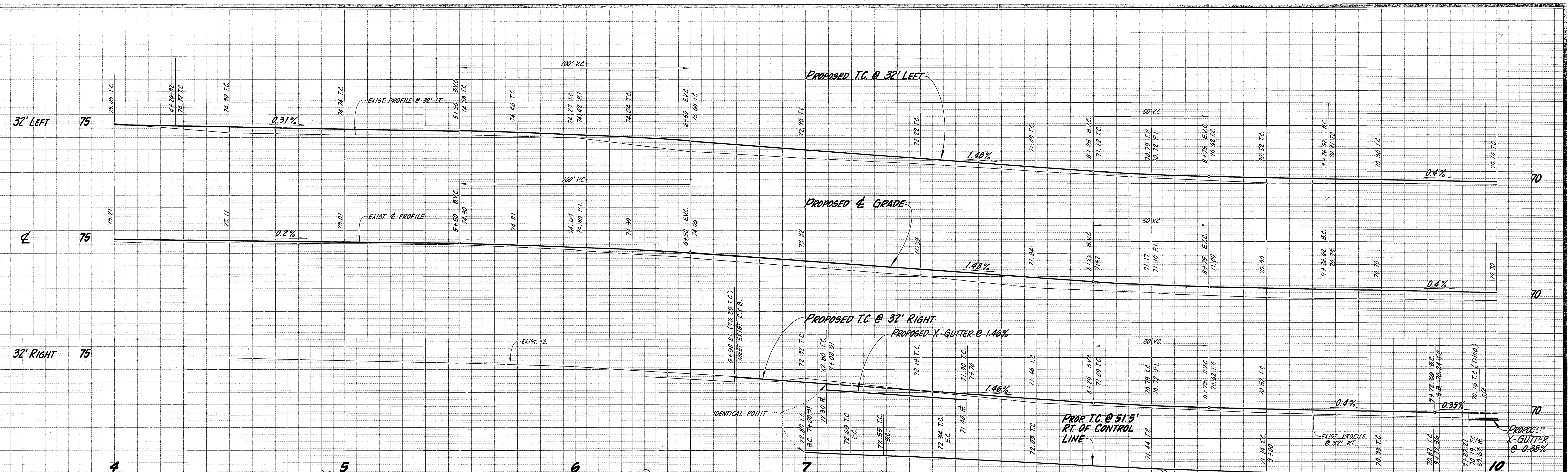
INDEXED 8-12-91 LTH



TYPICAL SECTIONS
NO SCALE
STA. LIMITS BASED ON CONTROL LINE OR CONST. &

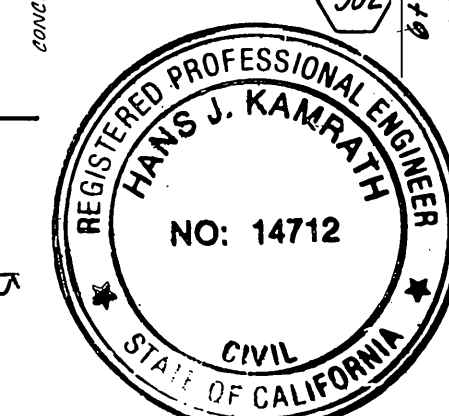


<p>ENGINEER IN RESPONSIBLE CHARGE HANS J. KAMRATH R.C.E. 14712 EXPIRES 3/31/93 DATE 2/26/1991</p>	<p>CITY OF RIVERSIDE PUBLIC WORKS DEPARTMENT</p>		<p>HARRISON STREET WIDENING FROM MAGNOLIA AVENUE TO GARFIELD AVENUE</p>	<p>ACCOUNT NO. 30-575-294-30 R-3041 SHEET 2 OF 7</p>
	<p>APPROVED BY: [Signature] DEPUTY P.W. DIRECTOR DATE: 3/19/91 CHIEF P.W. INSPECTOR: [Signature] DATE: 2-25-91 SURVEYOR: [Signature] DATE: 2-27-91 TRAFFIC DIVISION: [Signature] DATE: 2-27-91</p>	<p>APPROVED BY: [Signature] PUBLIC WORKS DIRECTOR DATE: 3/7/91</p>	<p>DESIGNED BY: [Signature] DRAWN BY: [Signature] CHECKED BY: [Signature]</p>	<p>HORIZ. SCALE: 1" = 20' VERT. SCALE: 1" = 4'</p>



DETAIL "A"
NO SCALE
(USE CONTROL LINE STA. AS INDICATED)

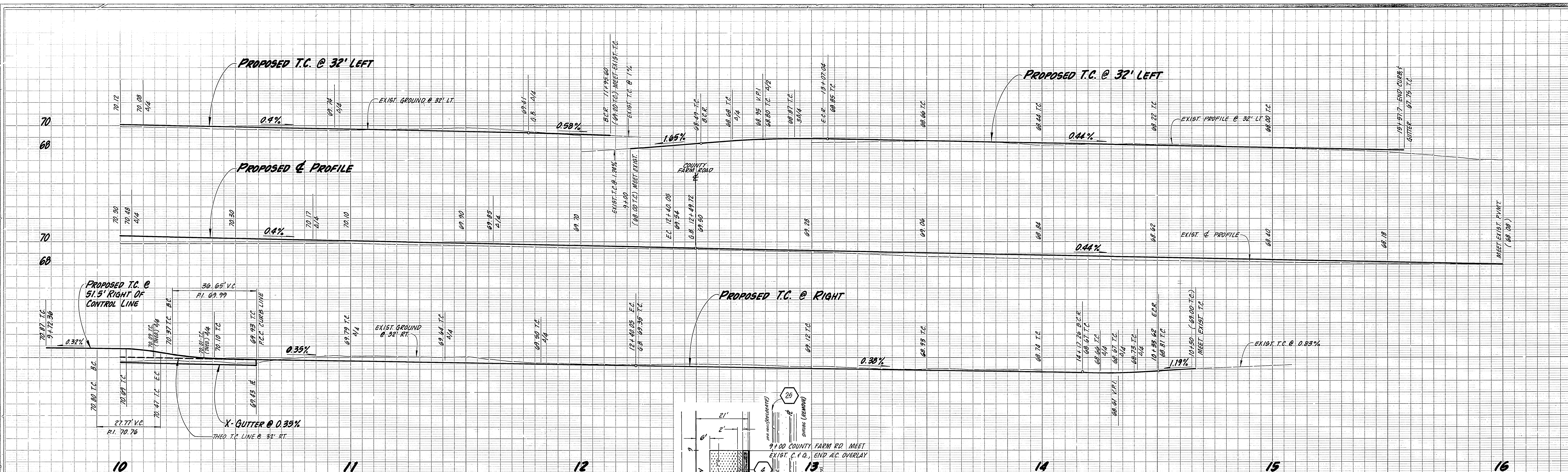
ENGINEER IN RESPONSIBLE CHARGE
Hans J. Kamraj
HANS J. KAMRAJ
R.C.E. 14712 EXPIRES 3/31/93
DATE 2/26/1991



MARK	REVISIONS	APPR.	DATE

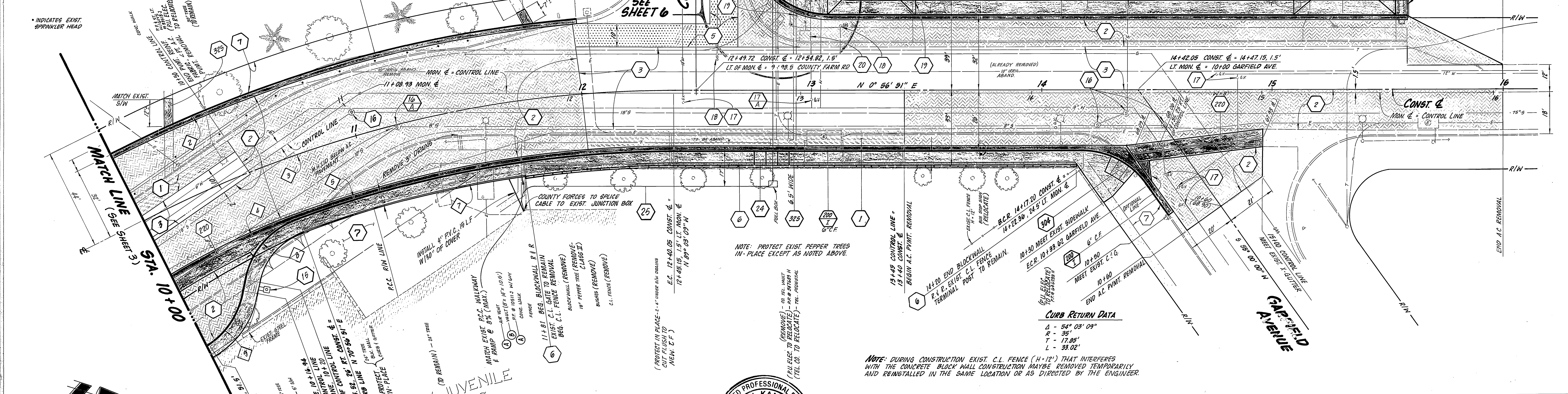
CITY OF RIVERSIDE
PUBLIC WORKS DEPARTMENT
APPROVED BY: **Ray Bell**
DATE: 3/7/91
DEPUTY P.W. DIRECTOR: 3/7/91
PRINCIPAL ENGINEER: 3/5/91
CHIEF P.W. INSPECTOR: 2-20-91
SUPERVISOR: 2-27-91
TRAFFIC DIVISION: 3-4-91
STREET SERVICES: 2-27-91

HARRISON STREET WIDENING
FROM MAGNOLIA AVENUE TO GARFIELD AVENUE
ACCOUNT NO. 30-575-294-30
R-3041
SHEET 3 OF 7
INDEXED 8-12-91



CURVE DATA

Δ	R	T	L	Δ	R	T	L
1 35° 55' 00"	544'	176.32'	341.01'	10 43° 37' 30"	35'	14.01'	26.65'
2 35° 55' 00"	532'	172.43'	333.49'	11 45° 00' 00"	25'	10.36'	19.63'
3 35° 55' 00"	500'	162.06'	313.43'				
4 15° 55' 00"	317.50'	44.39'	80.20'				
5 20° 00' 00"	474'	83.58'	185.48'				
6 19° 25' 00"	301.46'	51.58'	102.16'				
7 16° 30' 00"	468.50'	67.93'	134.92'				
8 60° 00' 00"	35'	20.21'	36.65'				
9 45° 27' 30"	35'	14.66'	27.71'				



COUNTY JUVENILE HALL BLDG.

① P.U. ELECTRIC TO RELOCATE
 ② P.U. ELECTRIC TO ABANDON (SEE SPEC. PROV.)

ENGINEER IN RESPONSIBLE CHARGE
HANS J. KAMRATH
 R.C.E. 14712 EXPIRES 3/31/93
 DATE 2/26/1991

REGISTERED PROFESSIONAL ENGINEER
HANS J. KAMRATH
 NO. 14712
 CIVIL
 STATE OF CALIFORNIA

CITY OF RIVERSIDE PUBLIC WORKS DEPARTMENT

APPROVED BY: DATE: 3/7/91
 DEPUTY P.W. DIRECTOR: 3/7/91 RALB
 PRINCIPAL ENGINEER: 3/5/91 SR
 CHIEF P.W. INSPECTOR: 2-27-91 ROK
 SURVEYOR: 2-27-91 BPH
 TRAFFIC DIVISION: 3-4-91 SW
 PARKS DEPARTMENT: 2-27-91 ROK
 STREET SERVICES: 2-27-91 ROK

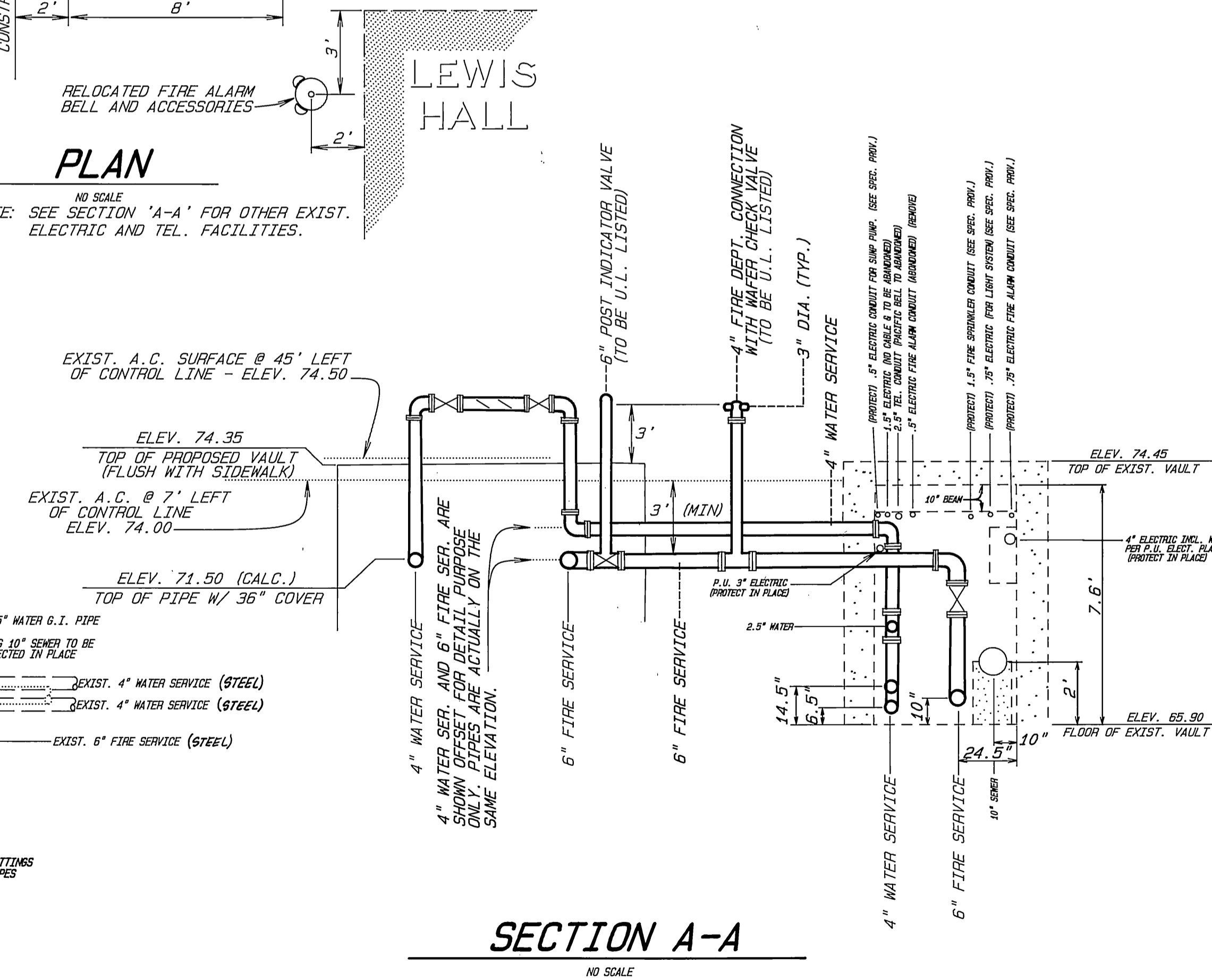
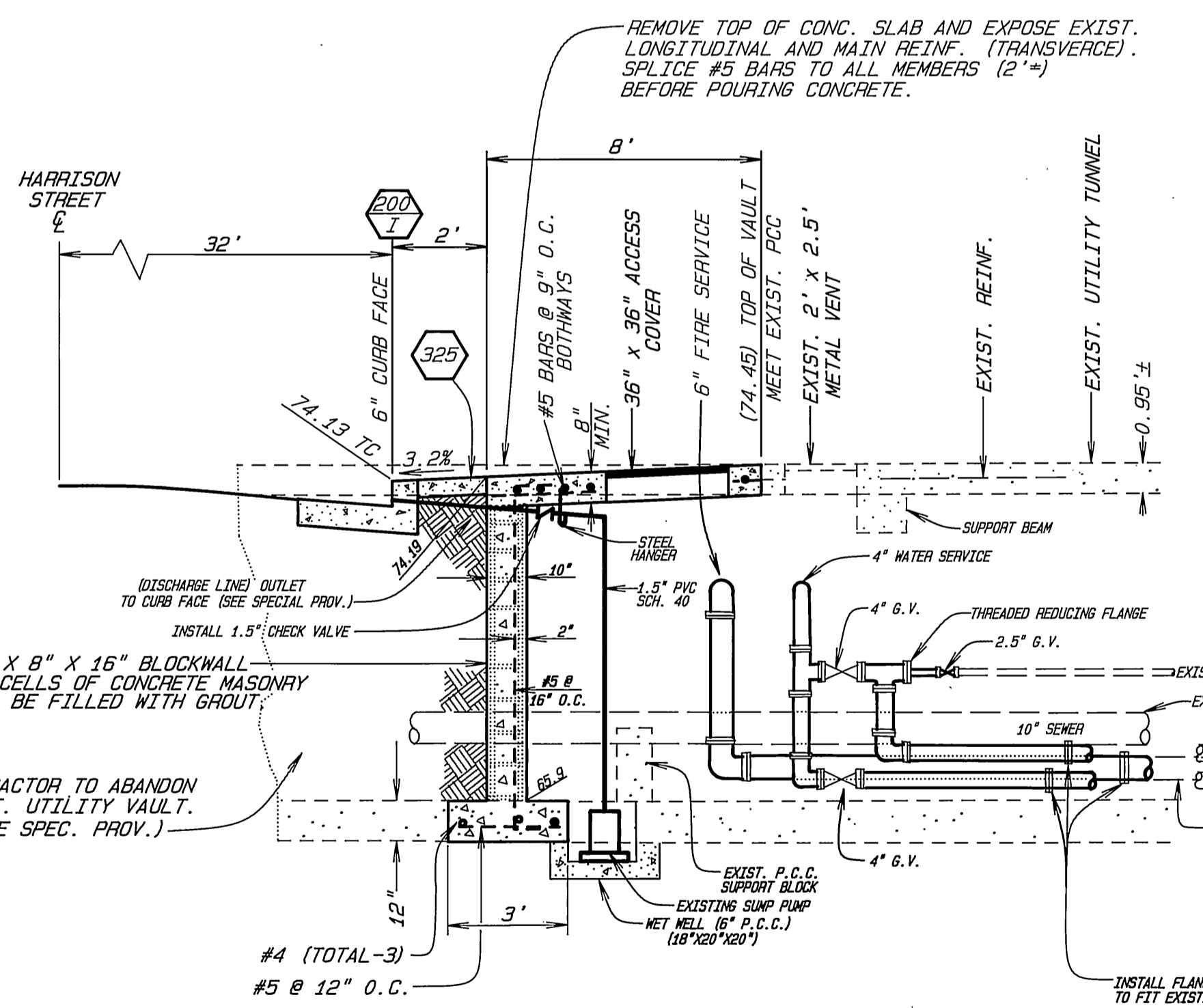
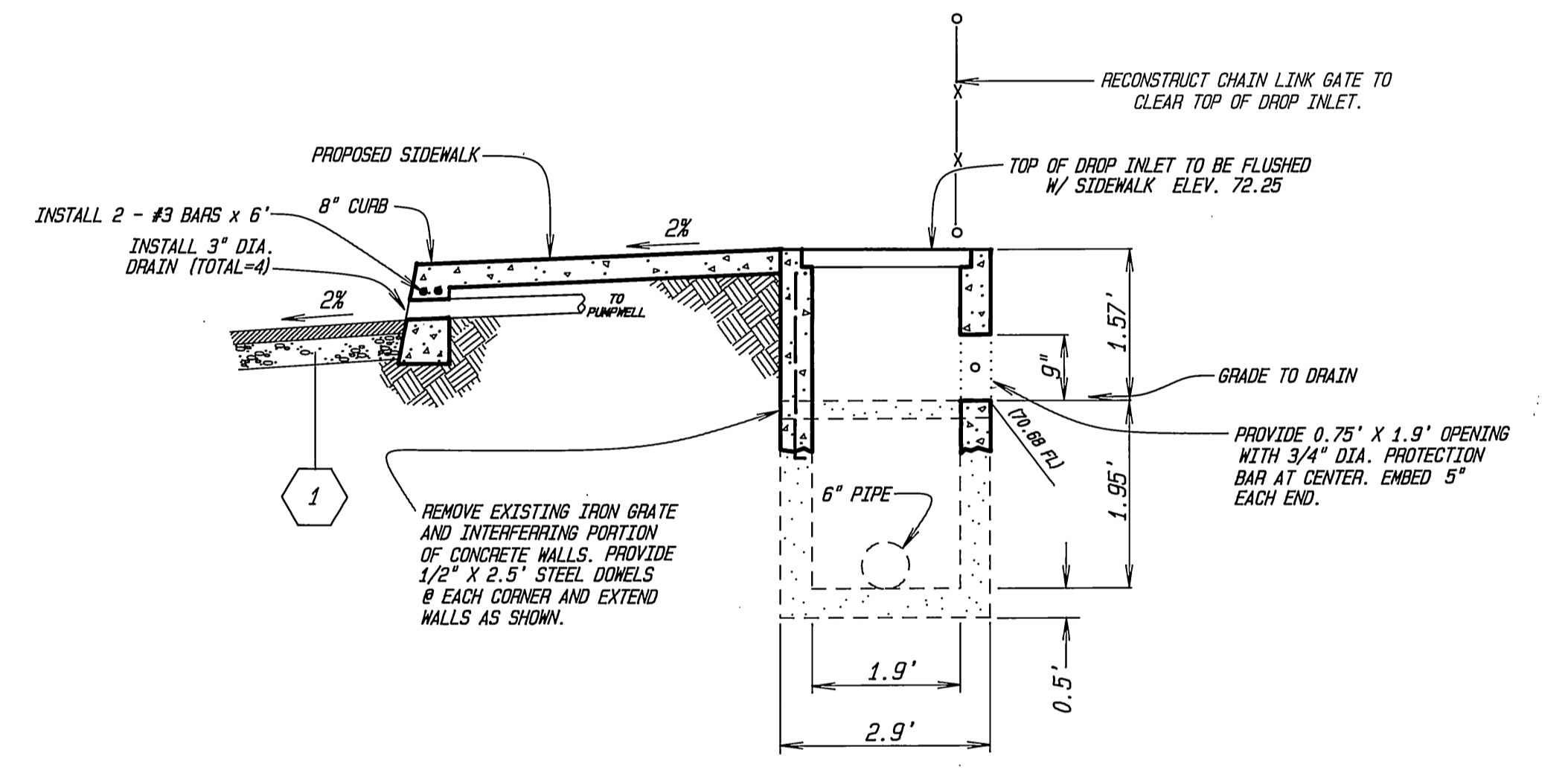
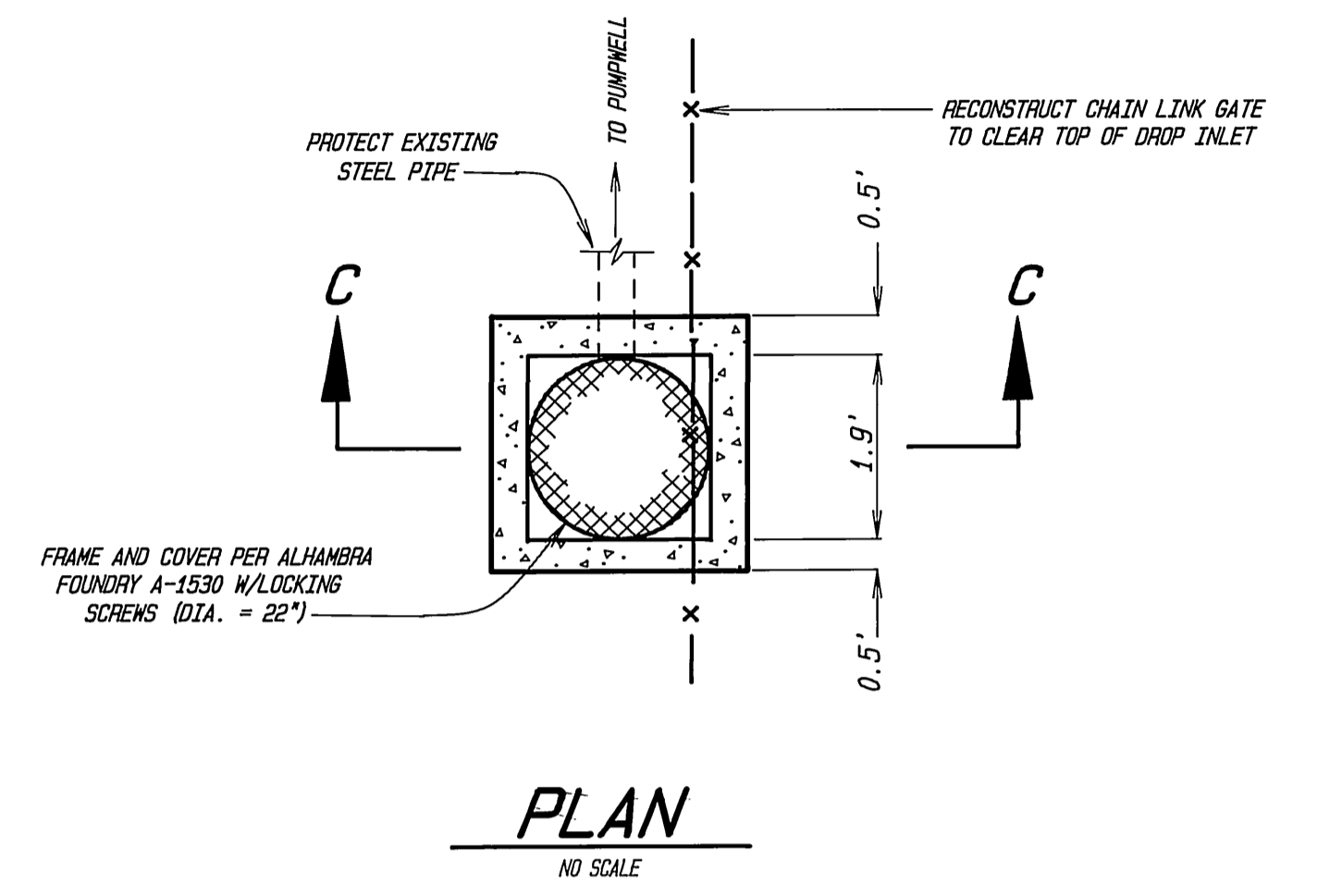
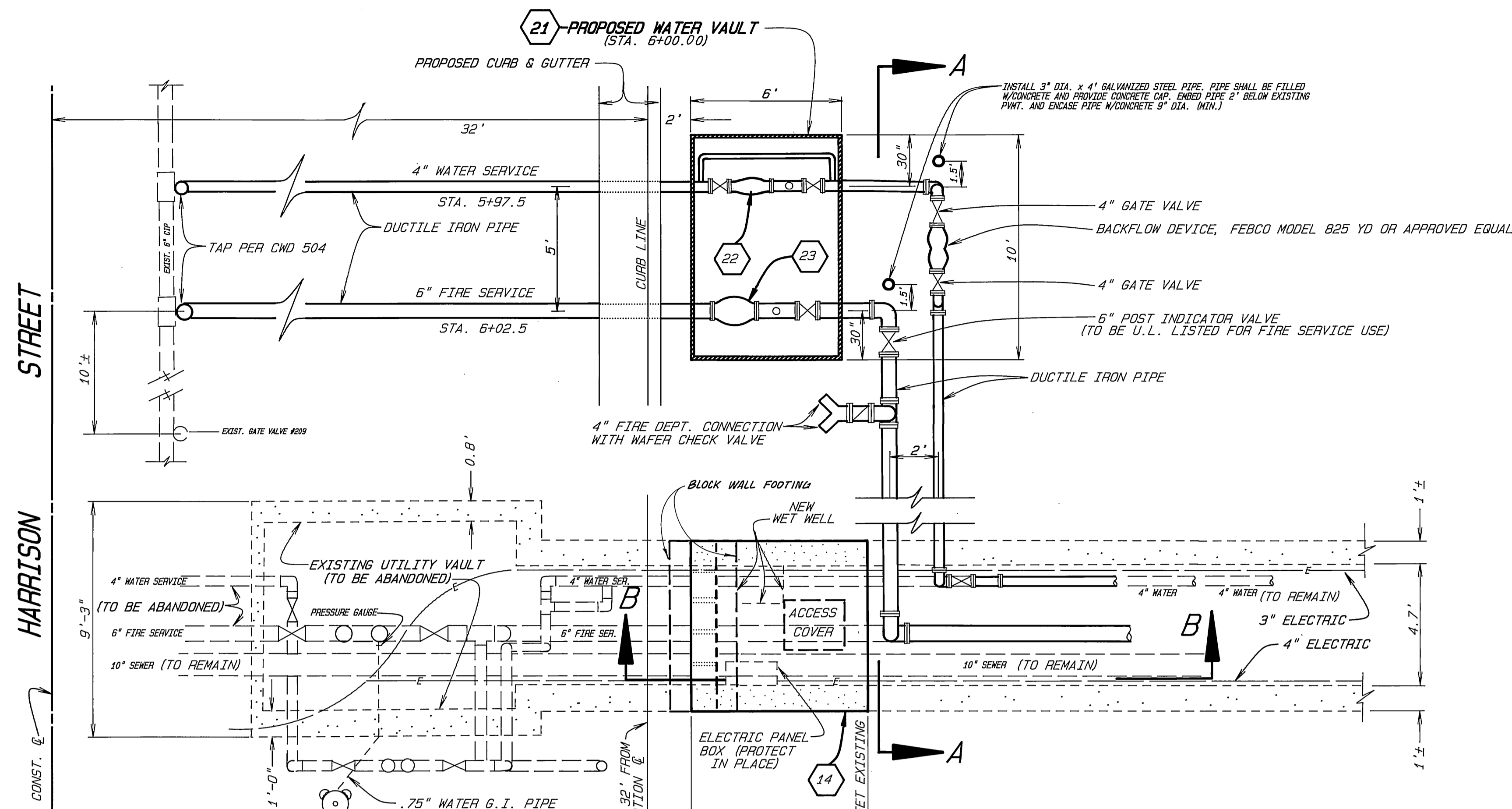
HARRISON STREET WIDENING

FROM MAGNOLIA AVENUE TO GARFIELD AVENUE

ACCOUNT NO. 30-575-294-30
R-3041
 SHEET 4 OF 7

HORIZ. SCALE: 1" = 20'
 VERT. SCALE: 1" = 4'

INDEXED 8-12-91 H



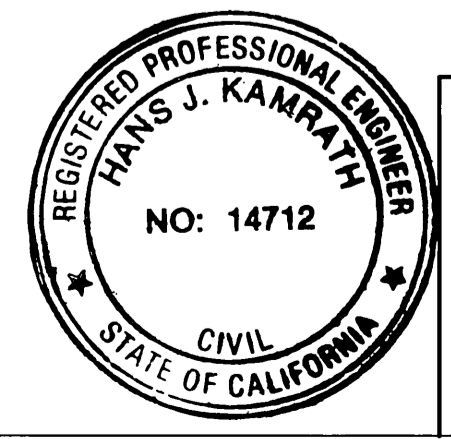
SECTION C-C
NO SCALE
NOTE: TOP SLAB REINFORCING BARS SHALL BE PROVIDED PER STD. 425

MODIFIED DROP INLET @ STA. 7+94

- P.U. WATER DEPT. GENERAL NOTES:
1. CONTRACTOR MAY BEGIN CONSTRUCTION OF WATER FACILITIES ONLY AFTER A PRECONSTRUCTION MEETING IS HELD WITH WATER DIVISION ENGINEERING STAFF. CONTACT INSPECTION AT 782-5304 TO ARRANGE THIS MEETING.
 2. CONTRACTOR TO GIVE THE CITY WATER DIV. TEN (10) WORKING DAYS WRITTEN NOTICE PRIOR TO START OF CONSTRUCTION AND TO ALLOW THE CITY 10 WORKING DAYS FOR COMPLETION OF WORK. (CALL 351-6168)

UTILITY & WATER VAULT DETAILS

- NOTE:
1. CONTRACTOR TO REMOVE & DISPOSE OF 4" & 6" WATER VALVES, 1" IRRG. PIPE, BACKFLOW PREVENTER, 4" FIRE DEPT. CONNECTION AND OTHER ACCESSORIES IN THE EXISTING UTILITY VAULT. (SEE SPEC. PROV.)
 2. FOR CITY OF RIVERSIDE FIRE DEPT. REQUIREMENTS, SEE SPEC. PROV.
 3. CONTRACTOR SHALL SALVAGE STEEL PIPE LADDER, SUMP PUMP, FLOW SWITCH, TWO TAMPER SWITCHES AND DELIVER TO THE COUNTY GENERAL HOSPITAL PLANT OPERATIONS OFFICE. 4" WATER METER SHALL BE SALVAGED AND DELIVERED TO THE CITY'S WATER DIV. MAINTENANCE OFFICE.
 4. CONTRACTOR SHALL VERIFY SIZE AND TYPE OF ALL PIPES WHERE CONSTRUCTION IS INDICATED, PRIOR TO COMMENCEMENT OF WORK.



ENGINEER IN RESPONSIBLE CHARGE
Hans J. Kamrath
 HANS J. KAMRATH
 P.C.E. 14712 expires 3/31/93
 DATE 2/26/1991

MARK	REVISIONS	APPR.	DATE

CITY OF RIVERSIDE
PUBLIC WORKS DEPARTMENT

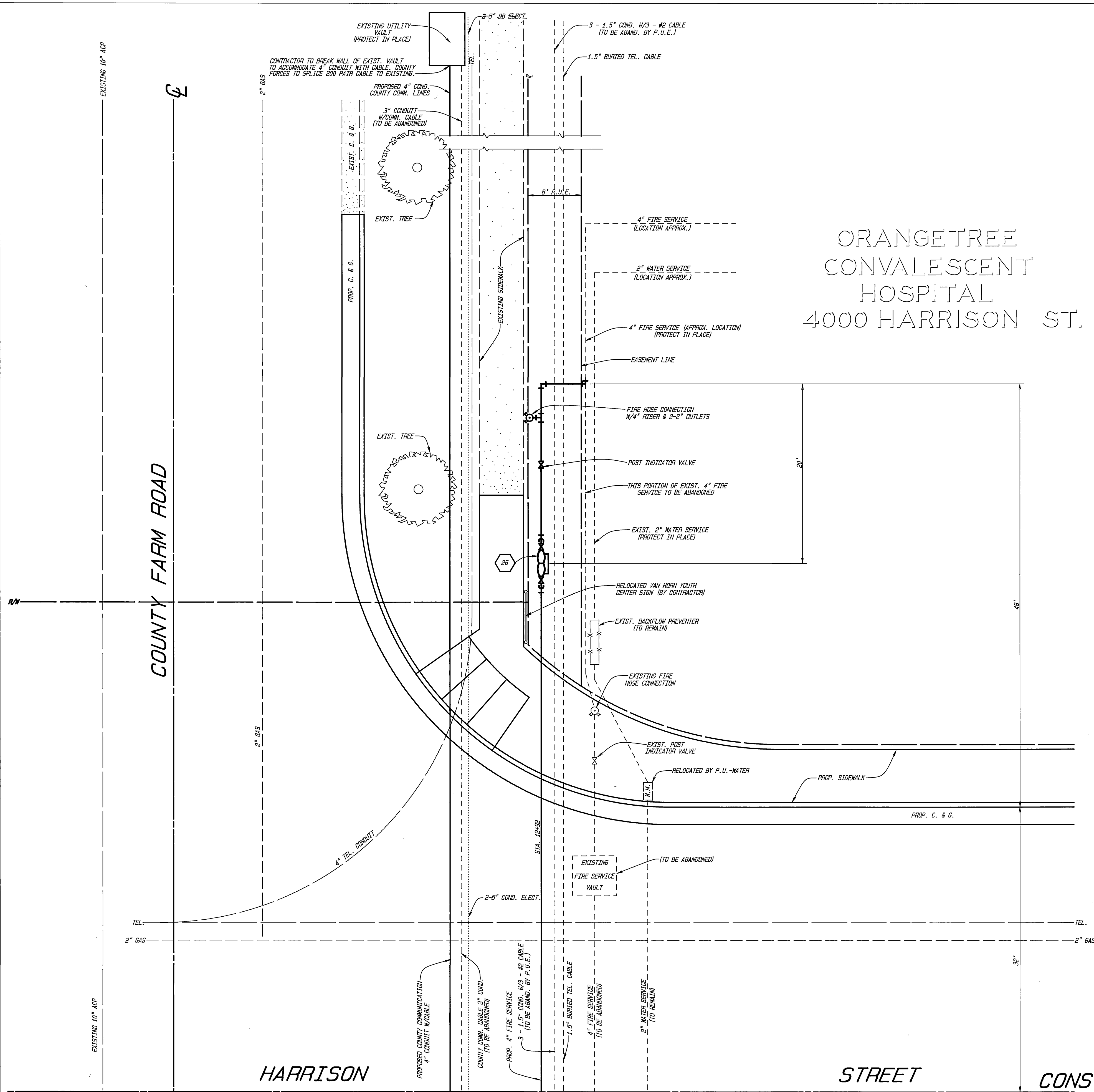
APPROVED BY	DATE	BY
DEPUTY P.W. DIRECTOR	3/17/91	10/16
PRINCIPAL ENGINEER	3/5/91	20
CHIEF P.W. INSPECTOR		
SURVEYOR	2-21/91	10/4
TRAFFIC DIVISION	3-4/91	10/4
PARKS DEPARTMENT		
STREET SERVICES		

APPROVED BY
Ray Baul
 PUBLIC WORKS DIRECTOR
 DATE 3/17/91

HARRISON STREET WIDENING
UTILITY VAULT PLAN & DETAILS

ACCOUNT NO. 30-575-294-30
R-3041
 SHEET 5 OF 7
 HORIZ. SCALE: 1"= 10'
 VERT. SCALE: 1"= 10'

ORANGETREE
CONVALESCENT
HOSPITAL
4000 HARRISON ST.



HARRISON

STREET

CONST. E



ENGINEER IN
RESPONSIBLE CHARGE
Hans J. Kamrahn
HANS J. KAMRAHN
R.C.E. 14712 expires 3/31/93
DATE 2/26/1991

MARK	REVISIONS	APPR.	DATE

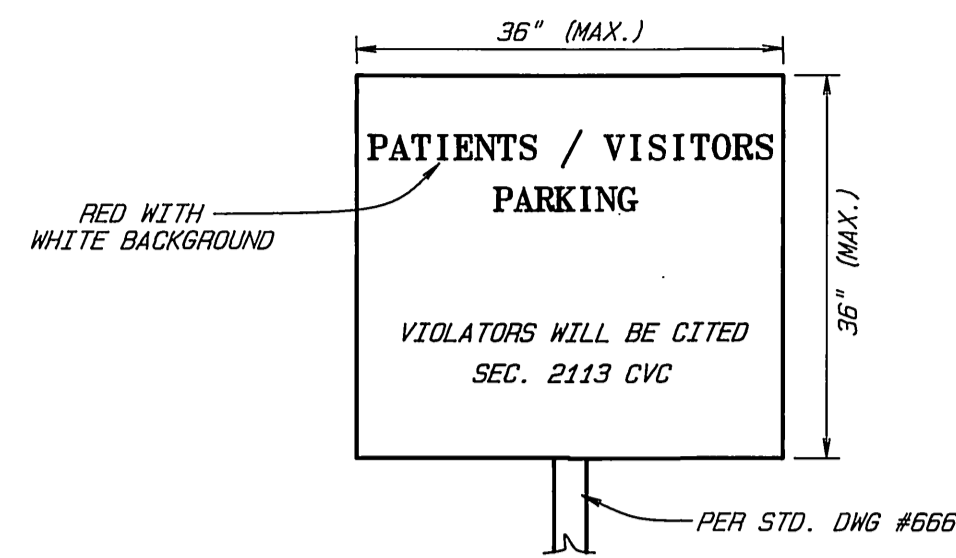
CITY OF RIVERSIDE PUBLIC WORKS DEPARTMENT			
APPROVED BY	DATE	BY	
DEPUTY P.W. DIRECTOR	3/7/91	B. J. [Signature]	
PRINCIPAL ENGINEER	3/5/91	[Signature]	
CHIEF P.W. INSPECTOR			
SURVEYOR	2-21-91	[Signature]	
TRAFFIC DIVISION	3-6-91	[Signature]	
PARKS DEPARTMENT			
STREET SERVICES			
DATE	3/7/91		

HARRISON STREET
WIDENING
UTILITY VAULT PLAN & DETAILS

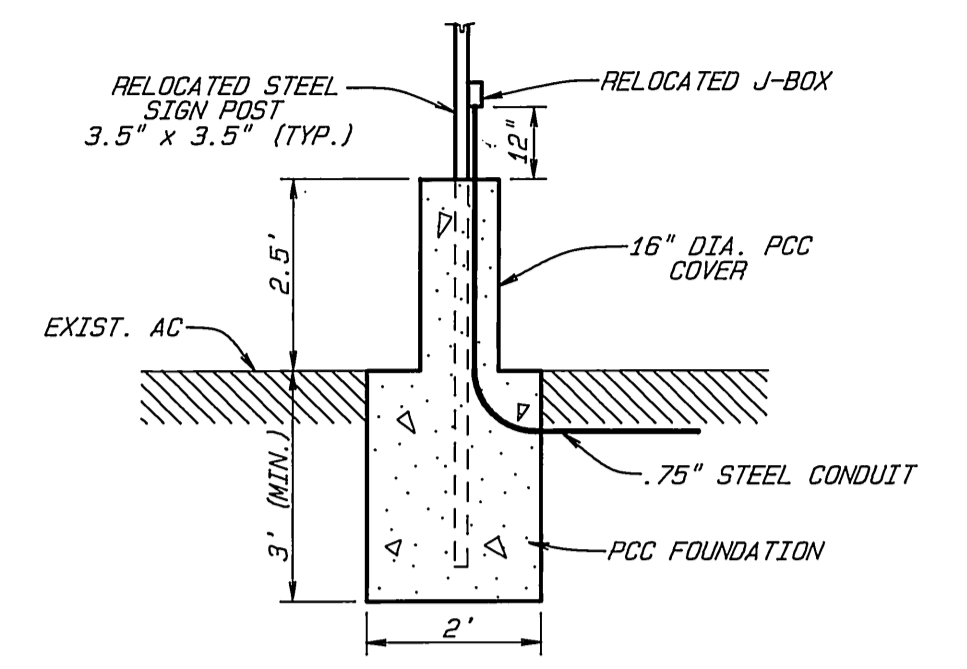
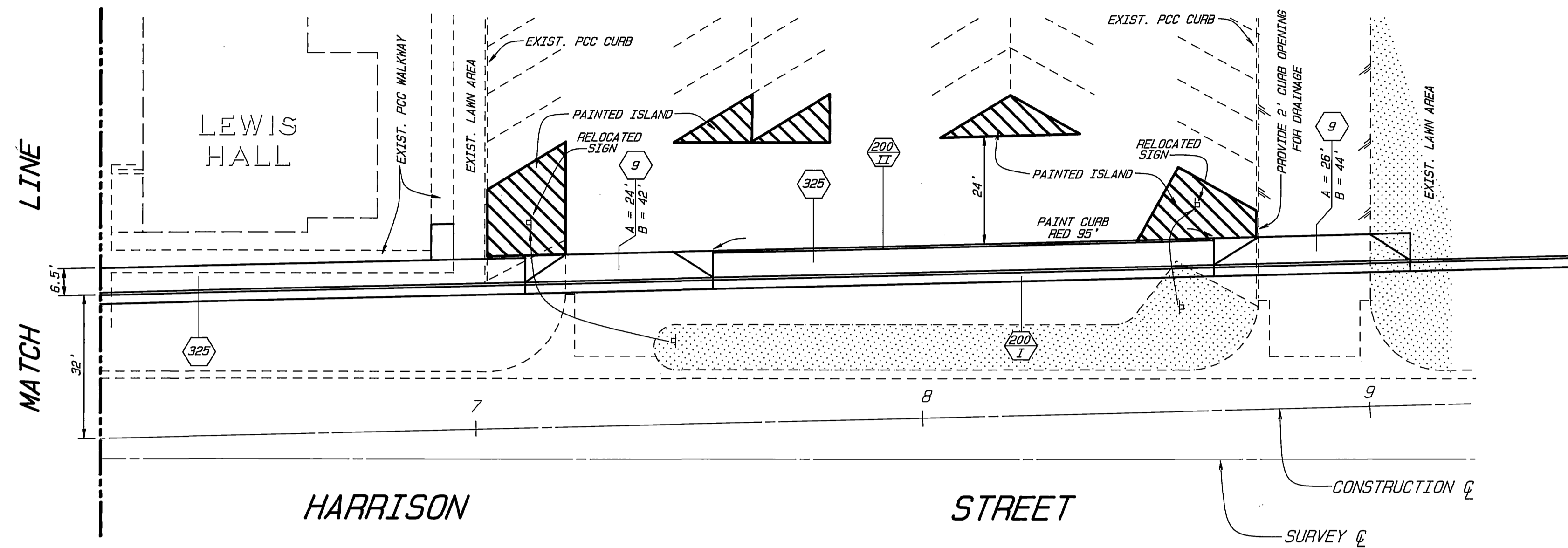
ACCOUNT NO. 30-575-294-30
R-3041
SHEET 6 OF 7

HORIZ. SCALE: 1"=40'
VERT. SCALE: 1"=4'

INDEXED 8-12-91 LPH

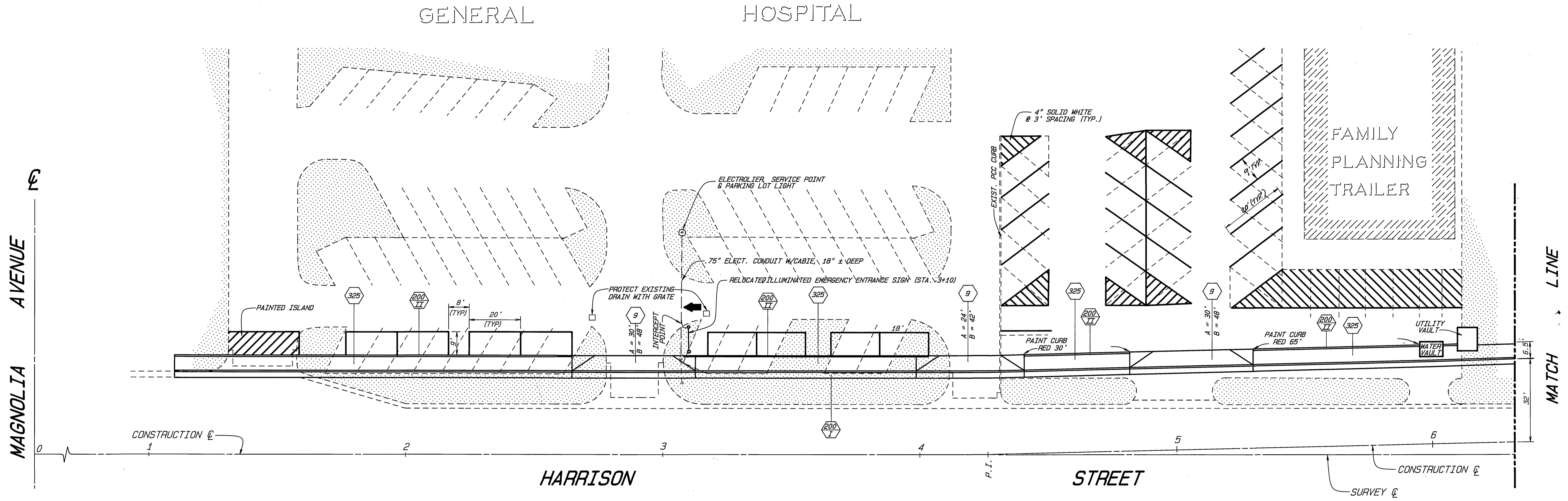


COUNTY HOSPITAL PARKING LOT SIGN DETAIL
N.T.S.
NOTE: CONTRACTOR TO SUBMIT SIGN LAYOUT FOR APPROVAL PRIOR TO INSTALLATION. UC LETTERS SHALL BE 3" TO 3.5". SIGN SHALL BE INSTALLED BACK TO BACK.

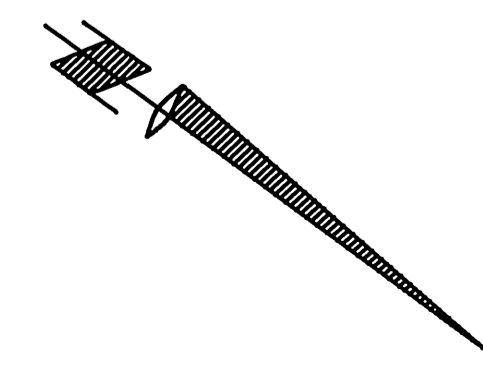


RELOCATED EMERGENCY ENTRANCE SIGN FOUNDATION
(ILLUMINATED EMERGENCY ENTRANCE SIGN STA. 3+10)

- NOTES:
1. REMOVE CONCRETE FOUNDATION AND SUPPORT SIGN IN PLACE. (PROTECT EXISTING STEEL POSTS)
 2. RELOCATE SIGN INCLUDING POST; FORM AND POUR PROTECTIVE CONCRETE 16" DIA. COVER SURROUNDING POST FROM EXISTING AC SURFACE TO 2.5' ABOVE. TOP OF FOUNDATION SHALL MATCH EXISTING AC SURFACE.
 3. THIS IS AN "EMERGENCY ENTRANCE" SIGN AND MUST BE RELOCATED AND OPERATIONAL ON THE SAME DAY.
 4. NEW CONDUIT SHALL EXTEND FROM THE INTERCEPT POINT TO THE JUNCTION BOX ON THE SUPPORT POST; JUNCTION BOX SHALL BE RELOCATED FROM ITS PRESENT POSITION ON POST TO 12" ABOVE PROTECTIVE CONC. COLLAR.
 5. INSTALL 2-#10 CONDUCTORS FROM PARKING LOT LIGHT TO SIGN.



NOTE: ALL PARKING STALL STRIPES SHALL BE 4" SOLID WHITE.



ENGINEER IN RESPONSIBLE CHARGE
Hans J. Kambath
HANS J. KAMBATH
R.C.E. 14712 expires 3/31/93
DATE 2/26/1991

CITY OF RIVERSIDE PUBLIC WORKS DEPARTMENT		APPROVED BY DATE 3/7/91	BY DATE 3/7/91
DESIGNED BY	DRAWN BY	CHECKED BY	DATE 3/7/91
REVISIONS	APPR.	DATE	
TRAFFIC DIVISION			
PARKS DEPARTMENT			
STREET SERVICES			

HARRISON STREET
WIDENING
PARKING LOT STRIPING PLAN
HORIZ. SCALE: 1"=... VERT. SCALE: 1"=...

ACCOUNT NO. 30-575-294-30
R-3041
SHEET 7 OF 7

INDEXED 8-12-91 LPH