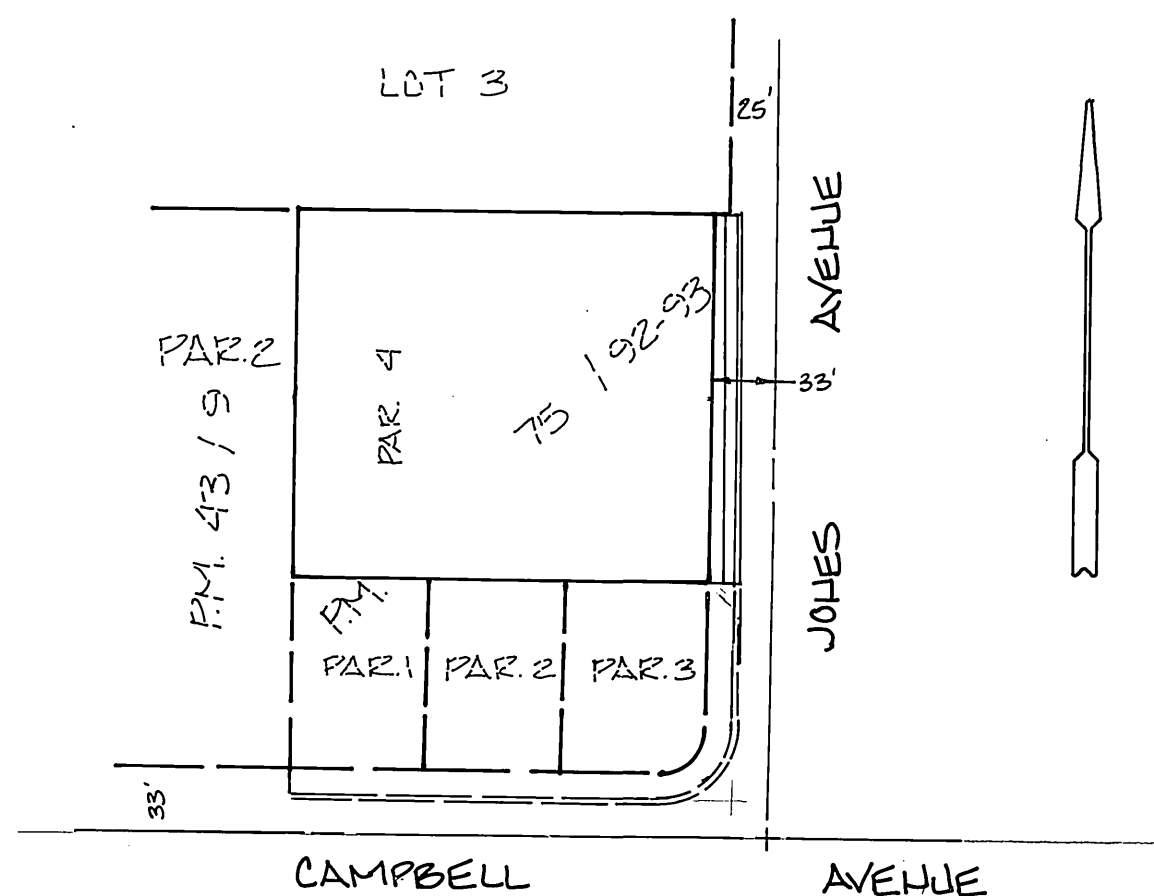


**GENERAL NOTES**

- The private engineer, signing these plans is responsible for ASSURING THE ACCURACY AND ACCEPTABILITY OF THE WORK HEREON. IN THE EVENT OF DISCREPANCIES ARISING DURING CONSTRUCTION, THE PRIVATE ENGINEER SHALL BE RESPONSIBLE FOR DETERMINING AN ACCEPTABLE SOLUTION AND REVISING THE PLANS FOR APPROVAL BY THE CITY.
- Construction shall be in accordance with the City of Riverside Department of Public Works, Standard Drawings, STANDARD DRAWING No. 10 AND THE STANDARD SPECIFICATIONS FOR PUBLIC WORKS CONSTRUCTION, CURRENT EDITION.
- All flagged elevations shall be staked in the field by the private engineer.
- Curb and gutter to be staked on 3' offset at 25' intervals.
- Trim edge of existing pavement where new pavement joins, to a smooth, straight line. Construct match up pavement as shown on plans and overlay paving as directed in the field to produce a smooth section.
- It shall be the responsibility of the contractor to clear the right of way in accordance with the provisions of law as it effects each utility, including irrigation lines and appurtenances, at no cost to the city.
- Any traffic control striping obliterated and or badly worn during construction shall be restored by the contractor within five days after notification from the City inspector.
- Construct driveway approaches per Std. Dwg. 302. Exact size and location AS SHOWN.
- All traffic signs shall be installed prior to opening street to traffic.
- Final striping for traffic and / or pavement marking to be responsibility of the developer.
- Quantities shown are for information only and the City of Riverside is not responsible for their accuracy.
- On all areas within public right of way where the fill is one (1) foot or greater, a letter will be required from the Soils Engineer, certifying the compaction of the fill below subgrade, prior to issuance of the Construction Permit / Cut Sheets.

- THE DEVELOPER SHALL BE RESPONSIBLE FOR PRESERVING OR RE-ESTABLISHING AND REFERENCING SURVEY MONUMENTS DESTROYED, DISTURBED OR BURIED AS A RESULT OF CONSTRUCTION SHOWN HEREON.
- THE CONTRACTOR SHALL CALL IN A LOCATION EDGES TO UNDERGROUND SERVICE ALERT (USA), PHONE NO. 1-800-442-4133, TWO WORKING DAYS BEFORE DIGGING. NO CONSTRUCTION PERMIT WILL BE ISSUED BY THE PUBLIC WORKS DEPARTMENT INVOLVING EXCAVATION FOR UNDERGROUND FACILITIES UNLESS THE APPLICANT HAS BEEN PROVIDED AN INQUIRY IDENTIFICATION NUMBER BY USA.
- IN PAVEMENT OVERLAY AREAS, DISTRESSED EXISTING PAVEMENT SHALL BE REMOVED AND REPLACED AS DIRECTED BY THE INSPECTOR PRIOR TO OVERLAY WITH A.C. PAVING.



**INDEX MAP**

SCALE: 1"=100'

**ESTIMATE OF QUANTITIES**

Excavation	18.5 C.Y.
Embankment	25.5 C.Y.
Conc. Curb & Gutter	192.13 L.F.
Conc. Side Walk	192.13 L.F.
A.C. Paving	18 C.Y.
Aggregate Base	64 C.Y.
Driveway Approach	2 EA.
Street Trees	5 EA.

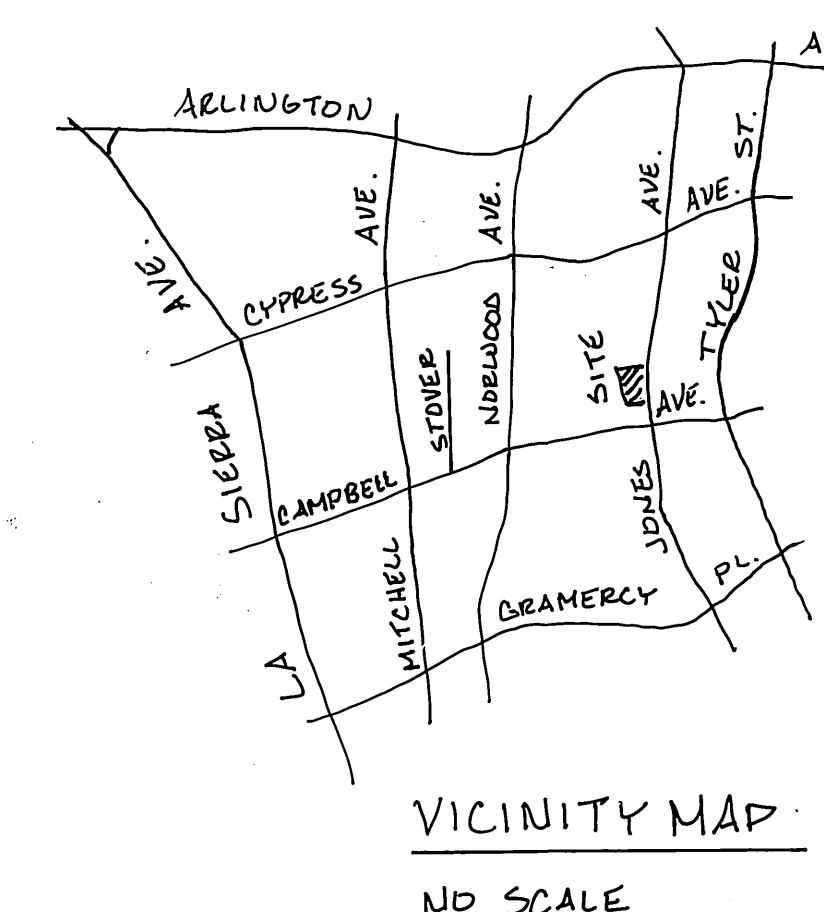
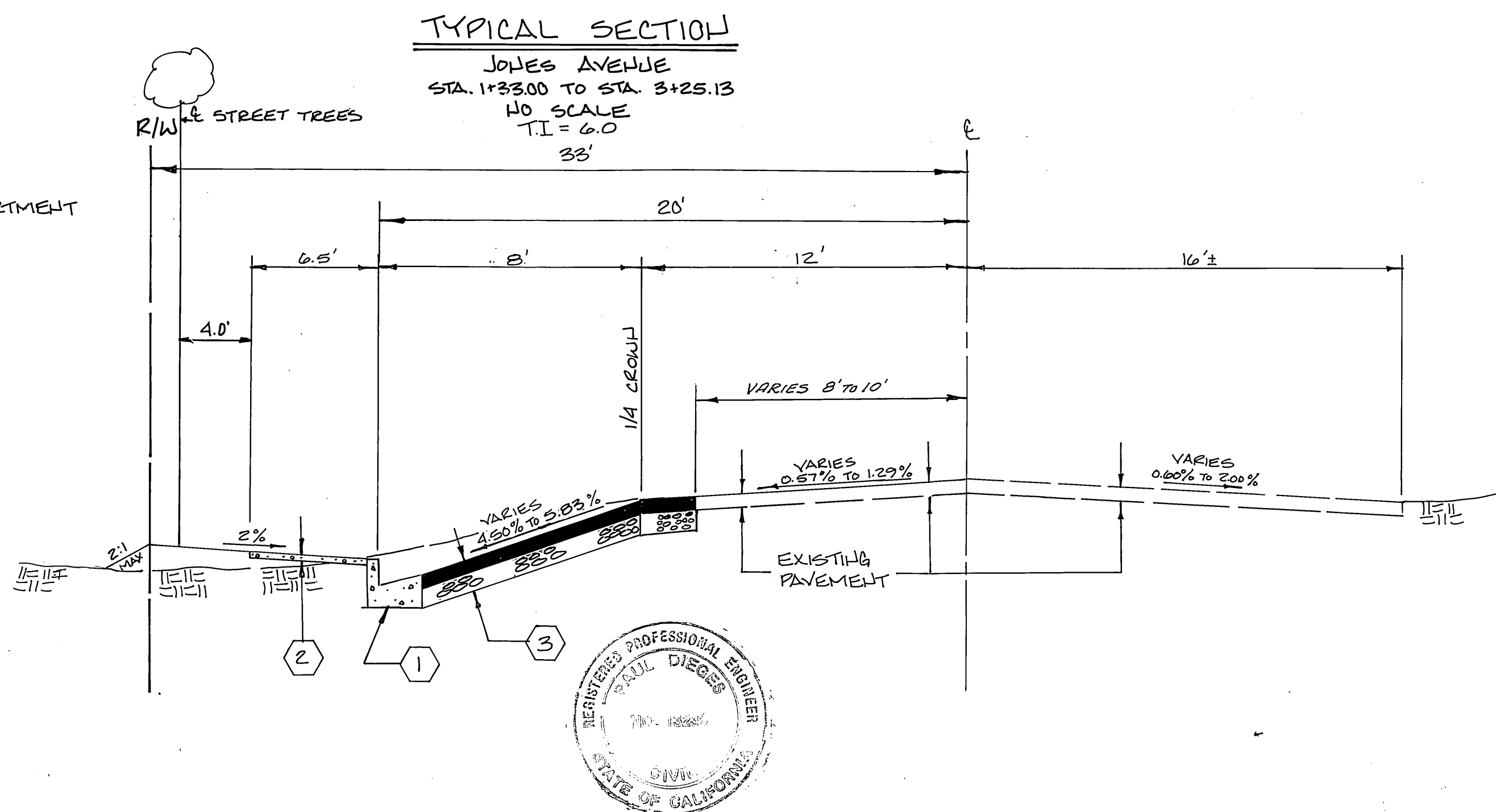
**GENERAL NOTES (STREET TREES)**

- All related work shall conform to the City of Riverside, Park & Recreation Department Std.
- Contact the Street Tree Inspector a minimum of 48 hours in advance (714) 351-6126 to schedule inspections. Inspection shall be required: A) When plant locations have been spotted in the field prior to digging plant pits, B) While digging plant pits and planting or relocating trees, C) After planting and all other indicated or specified work has been completed for start of maintenance, and D) at the end of maintenance / final acceptance (contractor / developer will be released from maintenance only upon receipt of written notification from the City that the Park and Recreation Dept. is assuming maintenance responsibilities)
- The contractor / developer shall maintain all planting for a minimum of 1 year.
- Street tree planting shall be as follows:
 

STREET NAME	BOTANICAL NAME / COMMON NAME	MIN. SIZE	APPROX. SPACING	NO. REQ.
JONES AVENUE	LAGERSTROEMIA INDICA / GRAPE MYRTLE	15 GAL.	45'	5
- Public Works and Parks and Recreation Dept. permits are required prior to tree location and / or removal work for all trees within the ultimate pavement area, backfill of all holes is to be inspected by the City for proper compaction.
- STREET TREES SHALL BE PLANTED PRIOR TO OCCUPANCY.

**CONSTRUCTION NOTES**

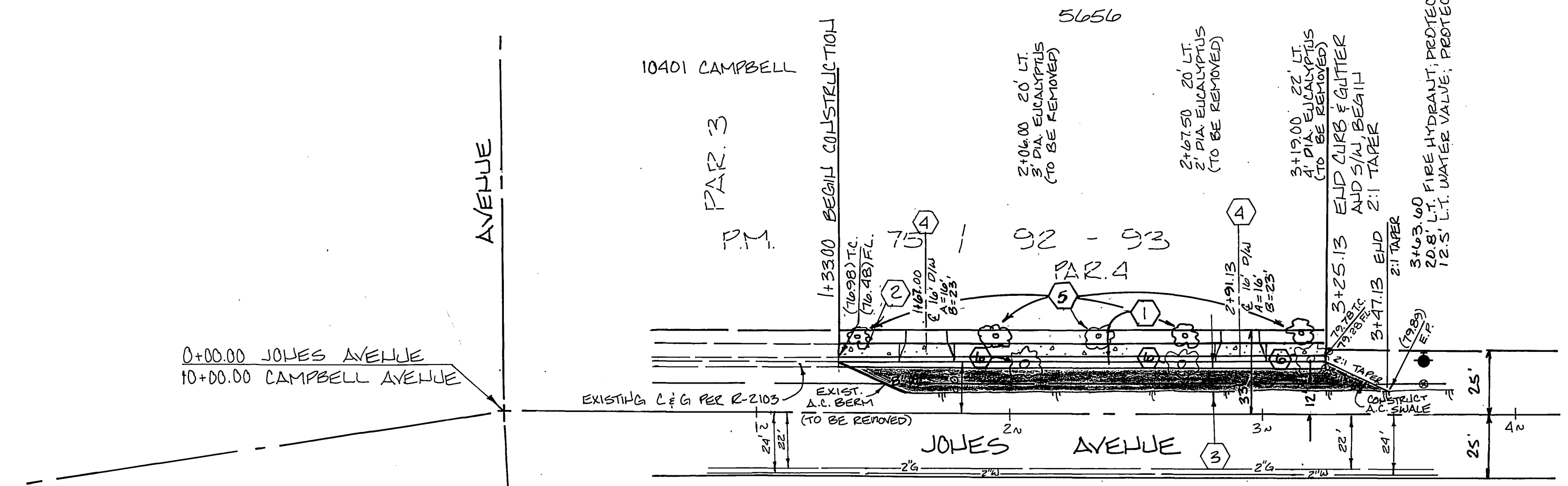
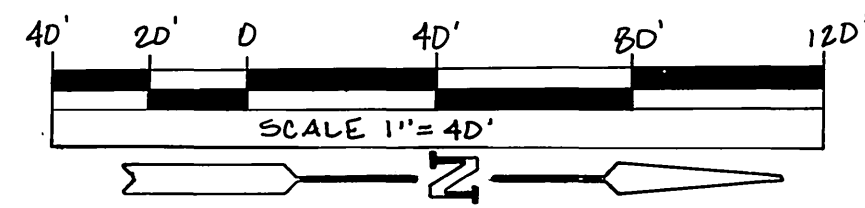
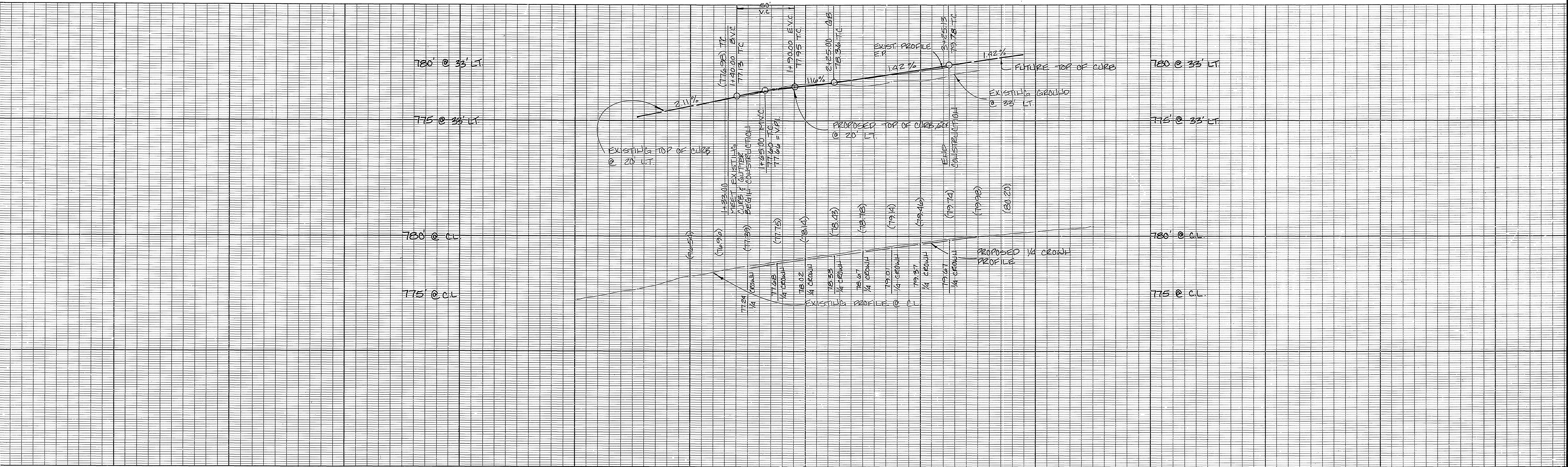
- Construct Curb & Gutter per Std. Dwg. 200, 6" C.F., TYPE I.
- Construct CURB SIDEWALK per Std. Dwg. 325
- Construct 3" A.C. paving over 11" Aggregate Base, Per R-2103
- CONSTRUCT DRIVEWAY APPROACH PER STD. 302 (TYPE II)
- PLANT STREET TREES TO THE SPECIFICATIONS OF THE PARK AND RECREATION DEPARTMENT
- REMOVE EXISTING STREET TREES



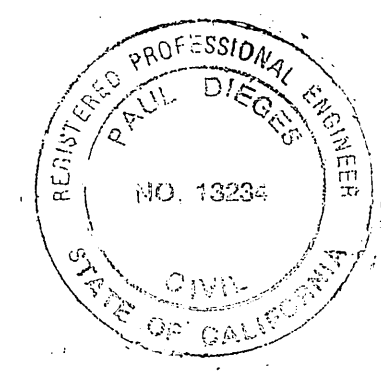
PACIFIC TELEPHONE COMPANY Approved By: <i>Wm Whitten</i> 9/8/89 Date Chief Utilities Engineer - Electric		SOUTHERN CALIFORNIA GAS COMPANY Approved By: <i>R.P. Laughman</i> 12-14-88 Date CITY OF RIVERSIDE WATER SYSTEM Approved By: <i>Richard J. Dredel</i> 4-6-89 Date		PERRIS ENGINEERING 1051 DAVIDS ROAD, PERRIS, CA. 92370 (714) 657-2822 Paul Dieges 12-1-88 Date City Business Tax Certif N# 011880 Exp. 4-14-90		BENCHMARK: G2-G F.I. PK. MAIL AND CITY ENGINEER TAG IN SLY CURB OF CAMPBELL AVE. 50' ± OF CL. JONES AVE. ELEV.: 774.91		CITY OF RIVERSIDE PUBLIC WORKS DEPARTMENT Approved By: <i>Barry Paul</i> Date: June 2, 1989 PUBLIC WORKS DIRECTOR		STREET IMPROVEMENT PLAN <b>JONES AVENUE</b> STA. 1+33.00 TO STA. 3+25.13 5650 JONES AVENUE ACCOUNT NO. R-3046 SHEET 1 OF 2 W.O. # 88-64	
Approved By: <i>Wm Whitten</i> 12/14/88 Date Chief Utilities Engineer - Electric		Approved By: <i>Richard J. Dredel</i> 4-6-89 Date		PAUL DIEGES R.C.E. 13234 Exp. 3-31-93 Date City Business Tax Certif N# 011880 Exp. 4-14-90		MARK REVISIONS APPR. DATE DESIGNED BY: <i>GT</i> DRAWN BY: <i>AB</i> CHECKED BY: <i>RCM</i>		APPROVED BY: <i>Barry Paul</i> DATE: June 2, 1989 PUBLIC WORKS DIRECTOR		HORIZ. SCALE: 1"=40' VERT. SCALE: 1"=4' INDEXED 8-9-89	

PC 12032





- CONSTRUCTION NOTES**
- ① CONSTRUCT CURB AND GUTTER PER STD. DWG. 200, TYPE I, 6" C.F.
  - ② CONSTRUCT 6' CURB SIDEWALK PER STD. DWG. 325
  - ③ CONSTRUCT 3" A.C. PAVING OVER 11" CLASS II A.B., PER R-2103
  - ④ CONSTRUCT DRIVEWAY APPROACH PER STD. 302 (TYPE II)
  - ⑤ PLANT STREET TREES TO THE SPECIFICATIONS OF THE PARK AND RECREATION DEPARTMENT.



PACIFIC TELEPHONE COMPANY APPROVED BY: <i>[Signature]</i> 2/8/89 DATE CITY OF RIVERSIDE - PUBLIC UTILITIES, ELECTRIC		SOUTHERN CALIFORNIA GAS COMPANY APPROVED BY: <i>[Signature]</i> 12-14-88 DATE CITY OF RIVERSIDE WATER SYSTEM		PERRIS ENGINEERING 1051 DAVIDS ROAD (714) 657-2822 PERRIS, CA 92370 APPROVED BY: <i>[Signature]</i> 12-1-88 DATE PAUL DIEBES P.E. 13234 EXP. 3-31-93 DATE CITY BUSINESS TAX CERTIF. NO. D11880 EXP. 4-14-90		BEUCHMARK: G2-G TO P.K. NAIL AND CITY ENGINEER TAG IN S/LY CURB OF CAMPBELL AVE. 50' E OF C.L. JONES AVE. ELEV.: 774.91		<b>CITY OF RIVERSIDE</b> <b>PUBLIC WORKS DEPARTMENT</b> APPROVED BY: <i>[Signature]</i> DATE: 6-1-89 TRAFFIC DIVISION CHIEF P.W. ENGINEER APPROVED BY: <i>[Signature]</i> DATE: 6-1-89 PUBLIC WORKS DIRECTOR		STREET IMPROVEMENT PLAN <b>JONES AVENUE</b> STA. 1+33.00 TO STA. 3+25.13 5056 JONES AVENUE ACCOUNT NO. R-3046 SHEET 2 OF 2 W.D. # 88-64	
APPROVED BY: <i>[Signature]</i> 12/14/88 DATE CHIEF UTILITIES ENGINEER-ELEC.		APPROVED BY: <i>[Signature]</i> 4-6-89 DATE CHIEF UTILITIES ENGINEER-ELEC.		DESIGNED BY: <i>[Signature]</i> DRAWN BY: <i>[Signature]</i> CHECKED BY: <i>[Signature]</i>		HORIZ. SCALE: 1"=40' VERT. SCALE: 1"=4' * AS BUILT 6-6-90 B.M.E.		INDEXED 8-9-89 4H			