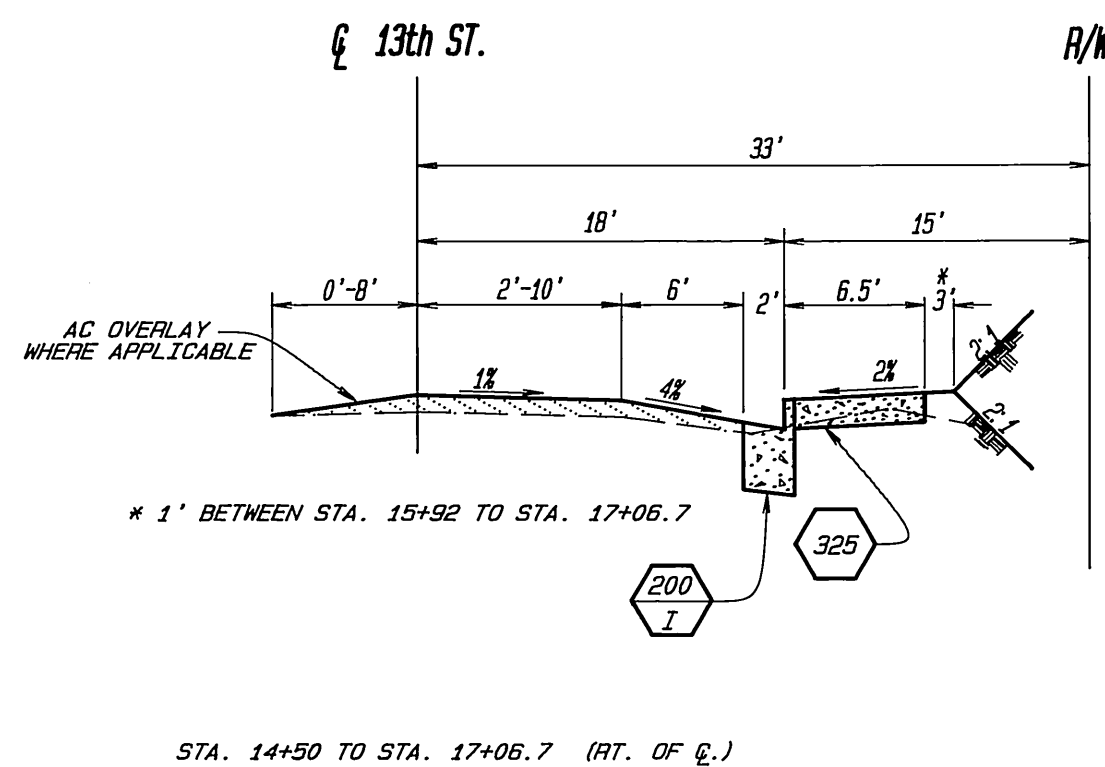


TYPICAL CROSS SECTIONS (THIRTEENTH STREET)
NO SCALE



STA. 14+50 TO STA. 17+06.7 (RT. OF E.)

PARK & RECREATION NOTES

- ALL RELATED WORK SHALL CONFORM TO THE CITY OF RIVERSIDE PARK AND RECREATION DEPT. STANDARDS AND CITY OF RIVERSIDE STREET TREE POLICIES.
- WHEN CALLING FOR INSPECTIONS CONTACT THE STREET TREE INSPECTOR A MIN. OF 48 HOURS IN ADVANCE AT (714) 351-6126 TO SCHEDULE AN INSPECTION. A FIELD NOTICE WILL BE ISSUED AS WRITTEN APPROVAL FOR EACH STAGE OF INSPECTION. A VERBAL APPROVAL WILL NOT BE ACCEPTABLE. INSPECTIONS ARE REQUIRED:
 - AFTER COMPLETION OF FINAL GRADING OF THE LOTS AND WHEN ALL UTILITY SERVICES AND SEWER LATERALS HAVE BEEN MARKED, BUT PRIOR TO DIGGING PLANT PITS, ALL FINAL STREET TREE LOCATIONS ARE TO BE SPOTTED IN THE FIELD BY THE STREET TREE INSPECTOR.
 - WHILE DIGGING PLANT PITS AND PLANTING/RELOCATING TREES.
 - AFTER PLANTING AND ALL OTHER INDICATED OR SPECIFIED WORK HAS BEEN COMPLETED, FOR START OF MAINTENANCE.
 - AT END OF MAINTENANCE PERIOD, THE CONTRACTOR/DEVELOPER SHALL CALL THE STREET TREE INSPECTOR AT (714) 351-6126 FOR A FINAL ACCEPTANCE INSPECTION IN ORDER TO BE RELEASED FROM MAINTENANCE. DEVELOPERS BONDS WILL NOT BE RELEASED UNTIL AFTER RECEIPT OF WRITTEN NOTIFICATION FROM THE CITY THAT THE TREES PASS FINAL INSPECTION AND THE PARK AND RECREATION DEPT. IS ASSUMING MAINTENANCE RESPONSIBILITY.
- ALL STREET TREES ARE TO BE PLANTED PRIOR TO OCCUPANCY.
- THE DEVELOPER SHALL BE RESPONSIBLE TO ACCEPTABLY MAINTAIN ALL PLANTINGS FOR A MINIMUM PERIOD OF ONE (1) YEAR.
- STREET TREE PLANTING SHALL BE AS FOLLOWS:

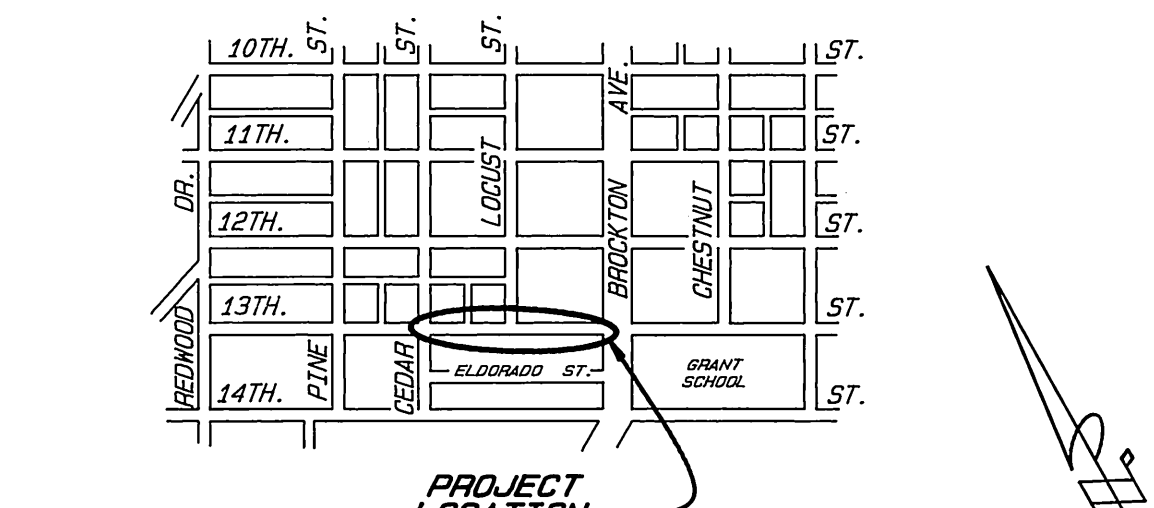
STREET NAME	COMMON NAME/ BOTANICAL NAME	MIN. SIZE	APPROX. SPACING	NO. REQUIRED
13th.	MEXICAN FAN PALM/ WASHINGTONIA ROBUSTA	REMOVE		2
13th.	MEXICAN FAN PALM/ WASHINGTONIA ROBUSTA	RELOCATE AS SHOWN ON PLAN		1
13th.	MEXICAN FAN PALM/ WASHINGTONIA ROBUSTA	RELOCATE TO PALM AVE., BETWEEN TERESOLUITE & BEECHWOOD TO THE SPECIFICATIONS OF THE PARK & RECREATION DEPT.		1

- BOTH A STREET TREE RELOCATION/REMOVAL PERMIT AS ISSUED BY THE PARK AND RECREATION DEPARTMENT AND A STREET OPENING PERMIT AS ISSUED BY THE PUBLIC WORKS DEPARTMENT ARE REQUIRED PRIOR TO COMMENCEMENT OF TREE RELOCATION AND/OR REMOVAL WORK. FOR ALL EXISTING TREES WITHIN WHAT IS ULTIMATELY BE THE PUBLIC RIGHT-OF-WAY PAVEMENT AREA, BACKFILL OF ALL HOLES MUST BE INSPECTED BY THE PUBLIC WORKS INSPECTOR FOR PROPER COMPACTION.
- ALL STREET TREES MUST BE AUTOMATICALLY IRRIGATED, EXCEPT WHERE ADJACENT TO SINGLE FAMILY OR DUPLEX RESIDENTIAL USES.

NOTE: IN THE INTEREST OF PUBLIC SAFETY AND MAINTENANCE, THE STREET TREE INSPECTOR SHALL HAVE THE AUTHORITY TO REVISE THE STREET TREE QUANTITIES AND LOCATIONS SHOWN ON APPROVED PLANS BASED UPON FIELD CONDITIONS FOUND AT THE TIME OF INSTALLATION OF THE TREES.

CURVE DATA

Station	R	Δ	L	T
1	27'	89°54'00"	42.36'	26.95'
2	27'	90°02'00"	42.43'	27.02'
3	27'	89°58'00"	42.40'	26.98'



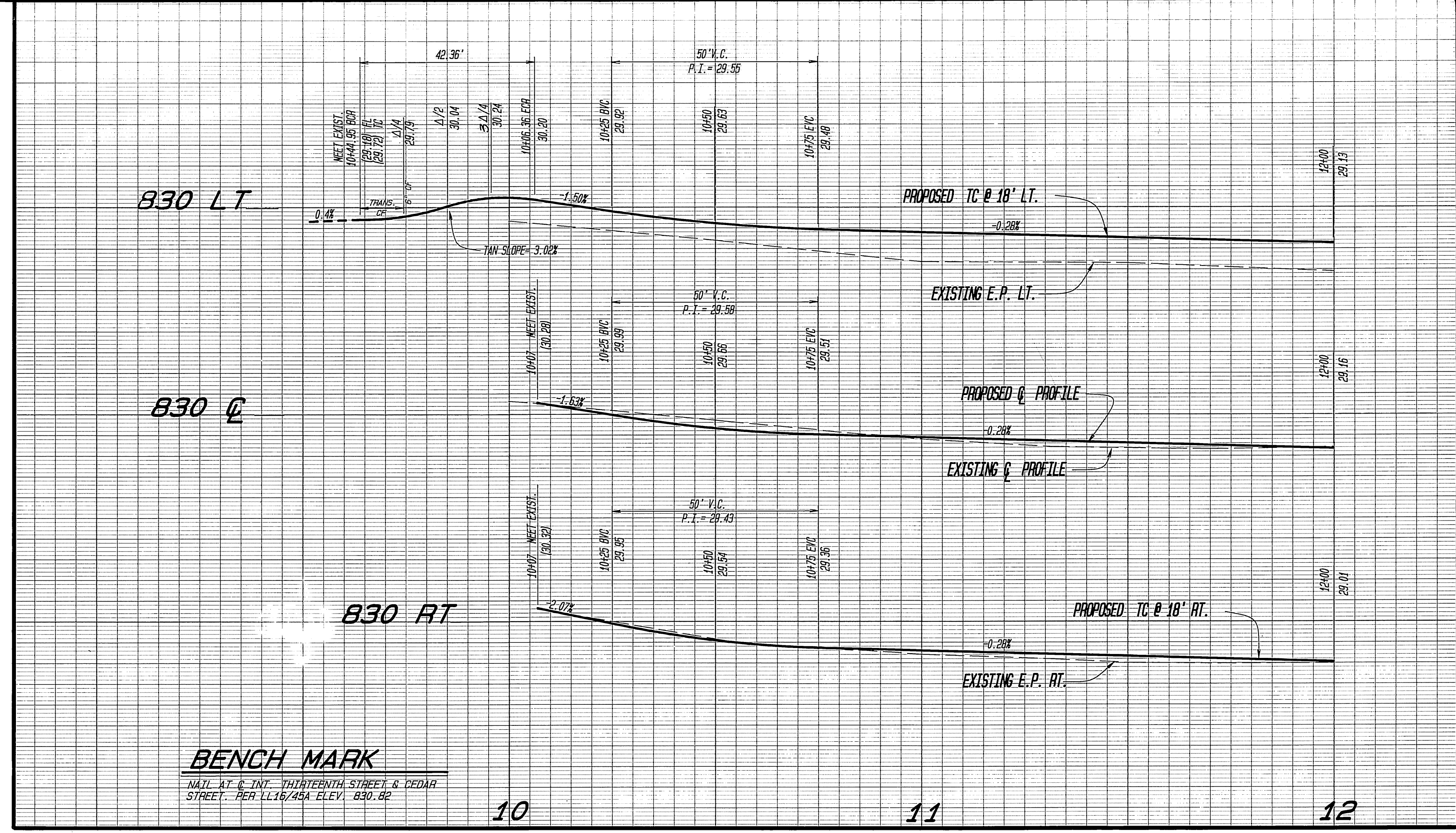
PROJECT LOCATION MAP
NO SCALE

GENERAL NOTES

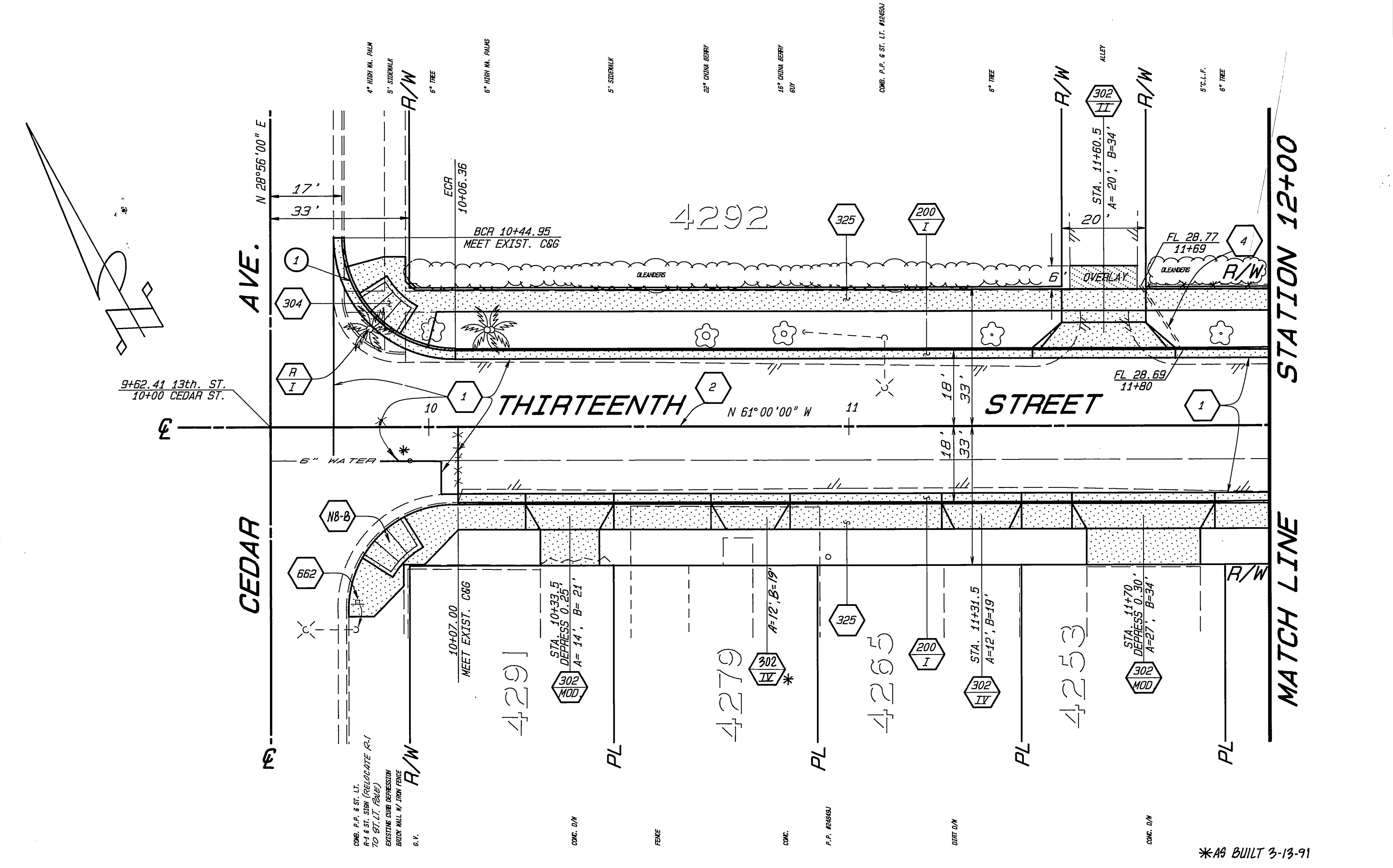
- CONSTRUCTION SHALL BE IN ACCORDANCE WITH THE CITY OF RIVERSIDE STANDARD DRAWINGS AND STANDARD SPECIFICATIONS FOR PUBLIC WORKS CONSTRUCTION, 1988 EDITION, & 1989, 1990 SUPPLEMENTS.
- NUMBERS ABOVE 100 IN A HEXAGON ON THE PLAN REFER TO THE RESPECTIVE STANDARD DRAWINGS AND SHALL BE CONSTRUCTED ACCORDINGLY, UNLESS MODIFICATIONS ARE NOTED ON THE PLAN. ANY NUMBER SHOWN BELOW THE STANDARD DRAWING NUMBER INDICATES THE SPECIFIC ALTERNATE TO BE CONSTRUCTED.
- 0.25 A.C. OVER COMPACTED NATIVE SOIL.
- A.C. OVERLAY.
- PCC AS NOTED IN STANDARDS.

CONSTRUCTION NOTES

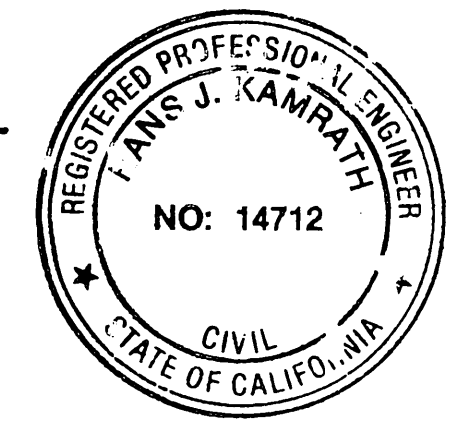
- CONSTRUCT CURB & GUTTER PER STD. DWG. NO. 200. (6" C.F.)
- CONSTRUCT CONC. DRIVEWAY APPROACH WITH DEPRESSED BACK PER STD. DWG. NO. 302. A & B AS NOTED.
- CONSTRUCT CONC. DRIVEWAY APPROACH PER STD. DWG. NO. 302. A & B AS NOTED.
- CONSTRUCT CONC. SIDEWALK PER STD. DWG. NO. 325.
- CONSTRUCT WHEELCHAIR RAMP PER STD. DWG. NO. 304.
- CONSTRUCT CROSS GUTTER PER STD. DWG. NO. 220.
- RELOCATE SIGN PER STD. DWG. NO. 662 & 6B2A.
- CONSTRUCT 0.25" A.C. OVER 0.80" CRUSHED AGGREGATE BASE.
- REPAINT EXISTING STRIPING. (BY CITY FORCES).
- TRANSITION GUTTER FLOW LINE BETWEEN STA. 16+93 & STA. 17+06.7 TO MEET EXISTING C.M.P. FLOW LINE.
- INSTALL 4" CAST IRON DRAIN PIPE.
- TRANSPLANT PALM TREE AS SPECIFIED IN THESE PLANS AND THE SPECIAL PROVISIONS.
- REMOVE TREE.
- CONSTRUCT WHEELCHAIR RAMP PER STATE STD. DWG. NO. NB-B (CASE 2')



BENCH MARK
NAT'L. RT. & INT. THIRTEENTH STREET & CEDAR STREET. PER LL16/45A ELEV. 830.82



ENGINEER IN RESPONSIBLE CHARGE
HANS J. KAMRATTA
R.C.E. 14712 expires 3/31/93
DATE 8/16/90



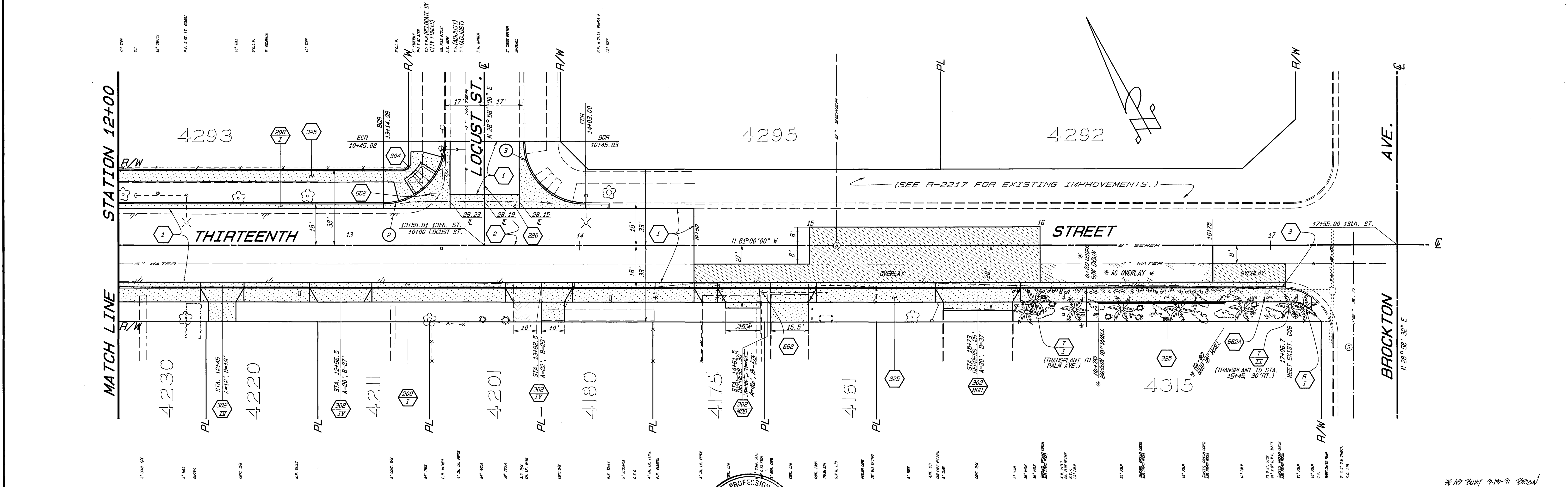
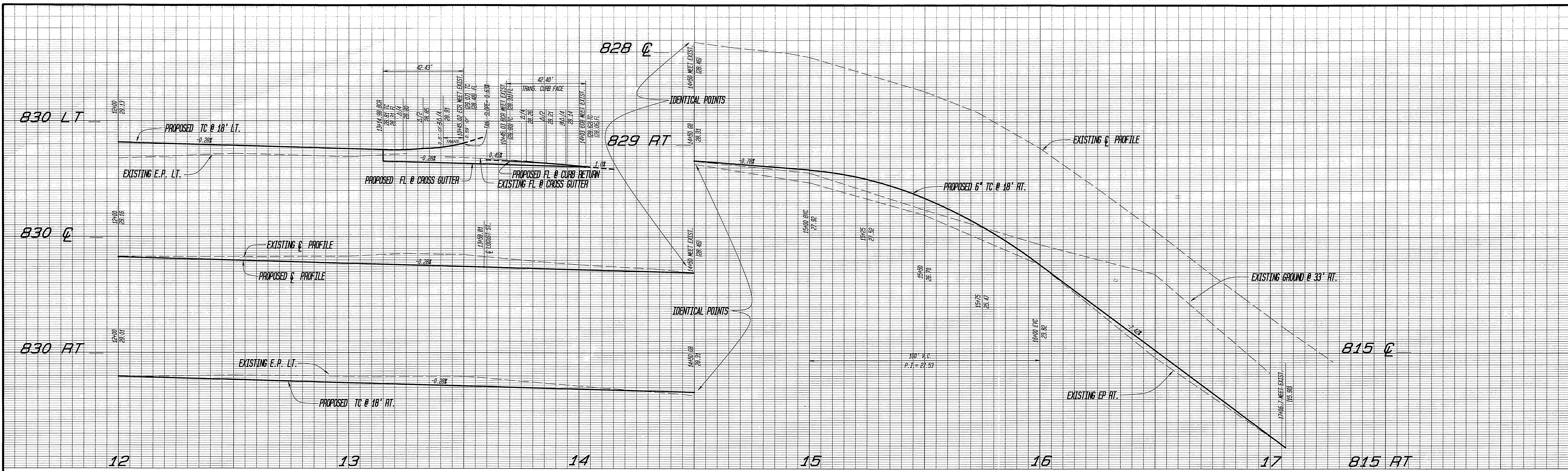
CITY OF RIVERSIDE PUBLIC WORKS DEPARTMENT

APPROVED BY: DEPUTY P.W. ENGINEER, DATE 8/13/90
 PRINCIPAL ENGINEER, DATE 8/16/90
 SURVEYOR, DATE 8-20-90
 CHIEF P.W. INSPECTOR, DATE 8-21-90
 TRAFFIC DIVISION, DATE 8-20-90
 PARK & RECREATION, DATE 8-20-90
 STREET SERVICES, DATE 8-22-90

THIRTEENTH STREET WIDENING
FROM CEDAR ST. TO BROCKTON AVE.

ACCOUNT NO. 15-250-521-41
R-3085
SHEET 1 OF 2

HORIZ. SCALE: 1" = 20' VERT. SCALE: 1" = 2'
INDEXED 1-10-91



<p>ENGINEER IN RESPONSIBLE CHARGE HANS J. KAMRATH R.C.E. 14712 expires 3/31/93 DATE 8/16/90</p>	<p>CITY OF RIVERSIDE PUBLIC WORKS DEPARTMENT</p> <p>APPROVED BY: <i>Benny Bed</i> DEPUTY P.W. ENGINEER 8/23/90 PRINCIPAL ENGINEER 8/23/90 SURVEYOR 8-16-90 CHIEF P.W. INSPECTOR 8-29-90 TRAFFIC DIVISION 8-29-90 PARK & RECREATION 8-29-90</p>	<p>THIRTEENTH STREET WIDENING FROM CEDAR ST. TO BROCKTON AVE.</p> <p>HORIZ. SCALE: 1" = 20' VERT. SCALE: 1" = 2'</p>	<p>ACCOUNT NO. 15-550-521-41 R-3085 SHEET 2 OF 2</p>

* NO BUILT 9-19-91 BROWN

INDEXED 1-10-91 4H