

ELEVATION
PLAN
NOTE: ALL BLOCK TO BE ORCO LA PAZ OR EQUIVALENT.
TYLER ST. REVERSE FRONTAGE FENCE

CALL
Underground Service Alert
48 hrs. Before You Dig
For Underground Locating
1-800-422-4133

BENCHMARK:
P.K. nail & City Engineer tag in SW'y curb of Tyler St., 645' SE'y of Ocampo St.
Elevation = 754.96

CENCOM CABLE, TV APPR BY: [Signature] DATE: 5/21/90	City of Riverside, Electric Appr. by: [Signature] Date: 5/23/90	City of Riverside, Water Appr. by: [Signature] Date: 6/16/90
Pacific Telephone Appr. by: [Signature] Date: 5/23/90	So. Calif. Gas Co. Appr. by: [Signature] Date: 5/23/90	

REGISTERED PROFESSIONAL ENGINEER
WILLIAM D. KELLER
NO. 44341
Exp. 6-30-93
CIVIL
STATE OF CALIFORNIA

WEBB, HAWKINS & ASSOCIATES
CIVIL ENGINEERS • LAND SURVEYORS
28481 Rancho California Road • Suite 108
Rancho California, California 92350 • (714) 876-2443

APPROVED BY: WILLIAM D. KELLER
REGISTERED CIVIL ENGINEER NO. 44341
REGISTRATION EXPIRES 06-30-93

DESIGNED BY: [Signature] DRAWN BY: [Signature] CHECKED BY: [Signature]

CITY OF RIVERSIDE
PUBLIC WORKS DEPARTMENT

APPROVED BY: [Signature] DATE: 7/26/90
PRINCIPAL ENGINEER

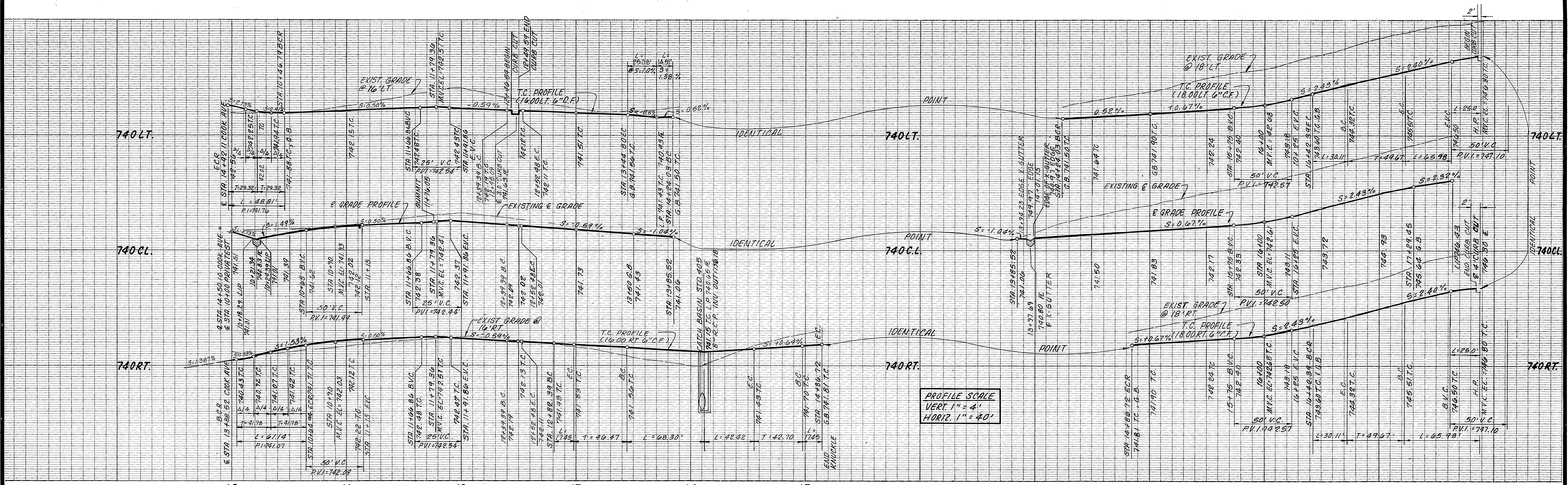
DATE: 7/26/90
DATE: 7/26/90

STREET PLAN & PROFILE
TYLER STREET NW'y side
35+17.12 to 37+81.24
TRACT 24843
P.R.D. - 1-878

ACCOUNT NO. R-3168
SHEET 2 OF 4
L-17

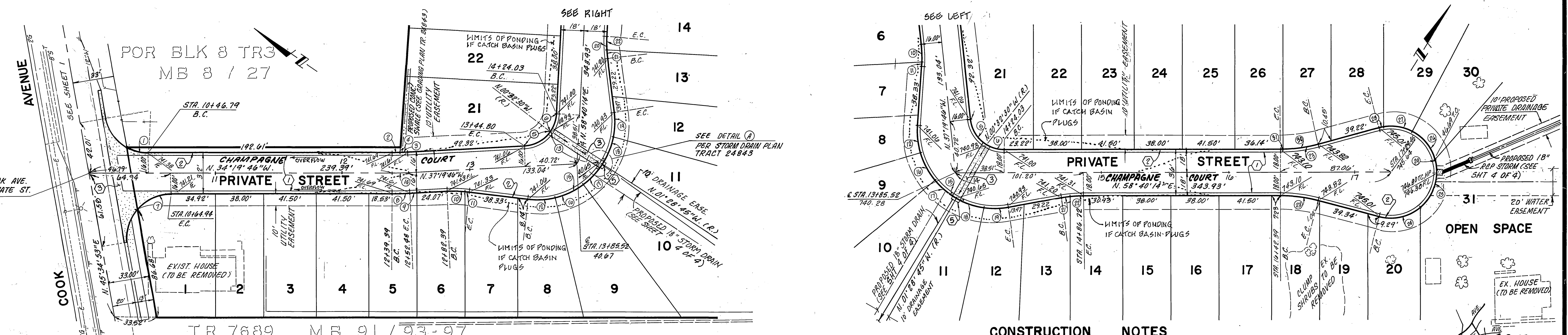
HORIZ. SCALE: 1" = 20'
VERT. SCALE: 1" = 4'

INDEXED 8-17-90 4ft



PROFILE SCALE
VERT. 1" = 4'
HORIZ. 1" = 40'

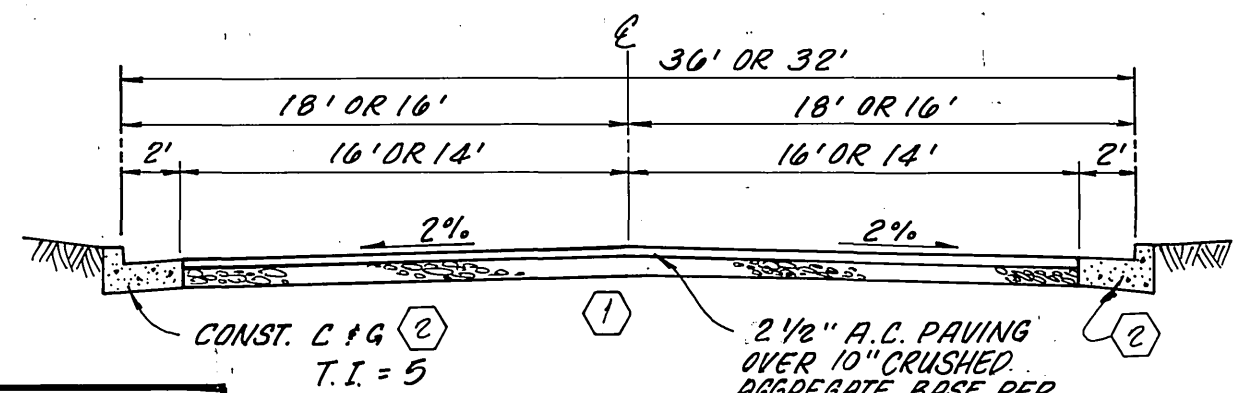
10 11 12 13 14 15 16 17 18



CONSTRUCTION NOTES

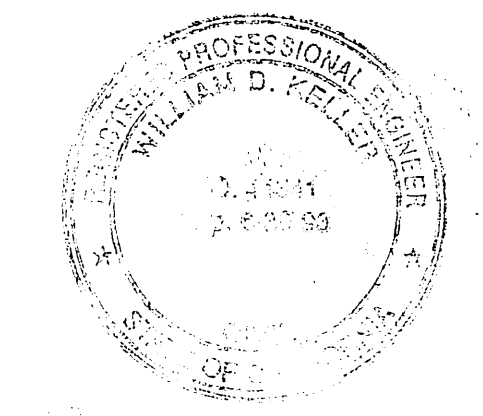
- 1 CONSTRUCT A.C. PAVEMENT PER TYPICAL SECTION
- 2 CONSTRUCT CONC. CURB PER CITY OF RIVERSIDE STD. DWG. NO. 200 TYPE I, 6" C.F.
- 3 CONSTRUCT CROSS GUTTER PER CITY OF RIVERSIDE STD. DWG. NO. 220 (6" WIDE)
- 5 CONSTRUCT CATCH BASIN PER CITY OF RIVERSIDE STD. DWG. NO. 405

DELTA/BRG.	R	L	T	DELTA/BRG.	R	L	T
1 79° 54' 39"	35.00'	48.01'	29.32'	17 20° 36' 41"	61.00'	21.94'	11.09'
2 01° 32' 28"	234.00'	6.29'	3.15'	18 21° 46' 31"	61.00'	23.18'	11.73'
3 01° 27' 32"	234.00'	5.96'	2.98'	19 18° 04' 30"	61.00'	19.24'	9.70'
4 N. 59° 44' 00" E.		4.27'		20 10° 00' 00"	100.00'	17.45'	8.75'
5 53° 12' 44"	27.00'	25.08'	13.52'	21 03° 56' 07"	100.00'	6.87'	3.44'
6 30° 47' 16"	27.00'	14.51'	7.43'	22 06° 03' 53"	100.00'	10.59'	5.30'
7 100° 05' 21"	35.00'	61.14'	41.78'	23 15° 00' 00"	115.00'	30.11'	15.14'
8 03° 00' 00"	266.00'	13.93'	6.97'	24 55° 08' 06"	36.00'	34.64'	18.79'
9 N. 37° 19' 46" W.		5.55'		25 65° 07' 55"	36.00'	40.93'	22.49'
10 08° 00' 21"	100.00'	13.97'	7.00'	26 46° 47' 43"	36.00'	29.40'	15.58'
11 01° 59' 59"	100.00'	3.48'	1.74'	27 37° 03' 01"	36.00'	23.28'	12.06'
12 20° 24' 16"	61.00'	21.72'	10.98'	28 05° 53' 15"	36.00'	3.70'	1.85'
13 N. 01° 28' 45" W (R)		47.93'		29 210° 00' 00"	36.00'	131.95'	71.27'
14 03° 00' 00"	250.00'	13.09'	6.55'	30 14° 04' 26"	115.00'	28.25'	14.20'
15 104° 00' 00"	61.00'	110.72'	78.08'	31 00° 55' 34"	115.00'	1.86'	0.93'
16 23° 08' 02"	61.00'	24.63'	12.48'				



CENCOM CABLE TV
BENCH MARK:
DATE: 5-21-90
APPR. BY: [Signature]
OK. MAIL & CITY ENGINEER TAG IN S&L'S CURB OF TYLER ST. SE. 1/4 OF OGDON ST.
F 3 - K ELEV. = 754.98

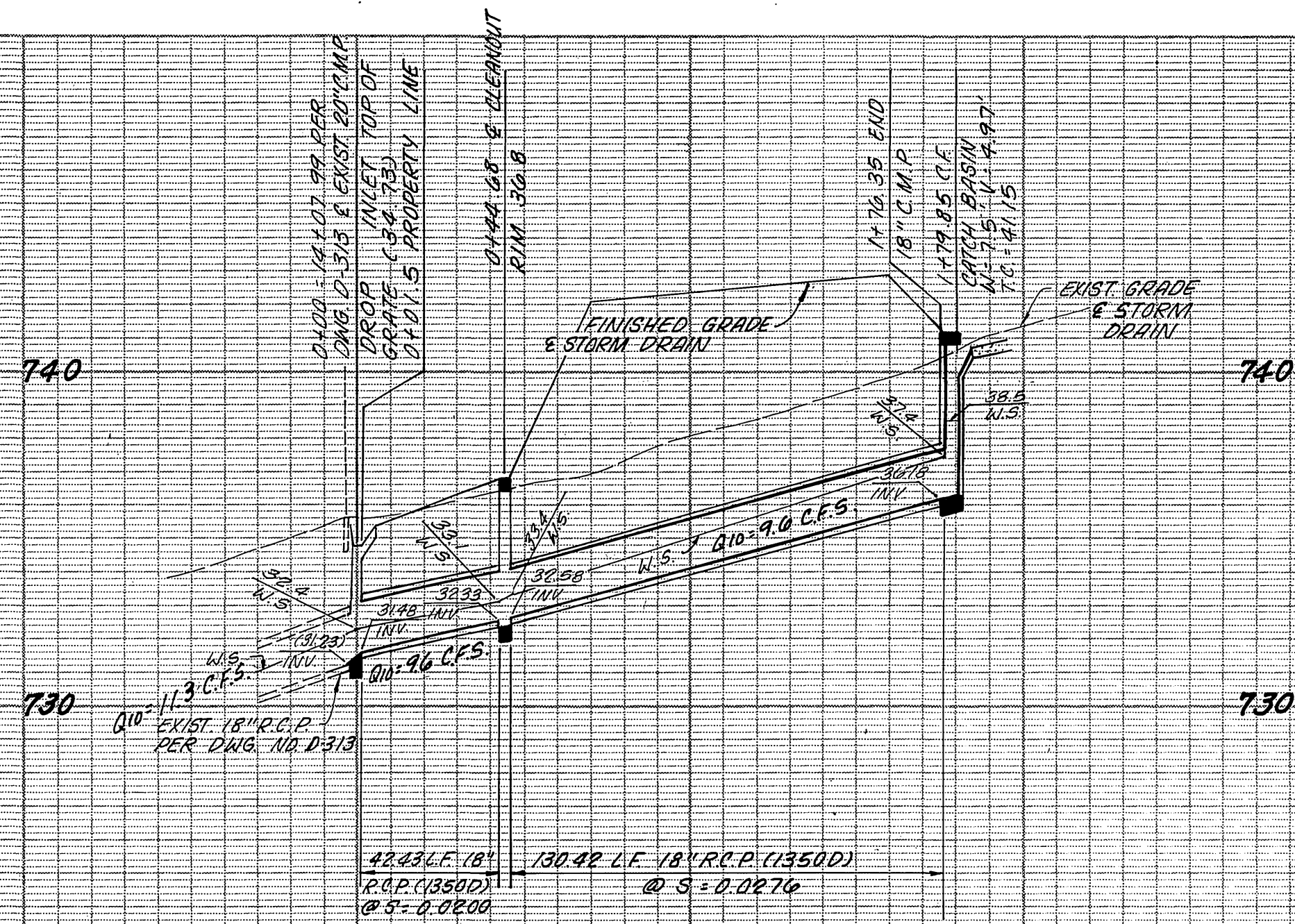
WEBB, HAWKINS & ASSOCIATES
CIVIL ENGINEERS • LAND SURVEYORS
28481 Rancho California Road • Suite 108
Rancho California, California 92390 • (714) 678-2443
APPROVED BY: WILLIAM D. KELLER
REGISTERED CIVIL ENGINEER NO. 44341
DATE: 02-06-90 REGISTRATION EXPIRES 6-30-93



CITY OF RIVERSIDE, CALIFORNIA
PUBLIC WORKS DEPARTMENT
APPROVED BY: [Signature]
PRINCIPAL ENGINEER
TRAFFIC DIVISION
DATE: 7/26/90

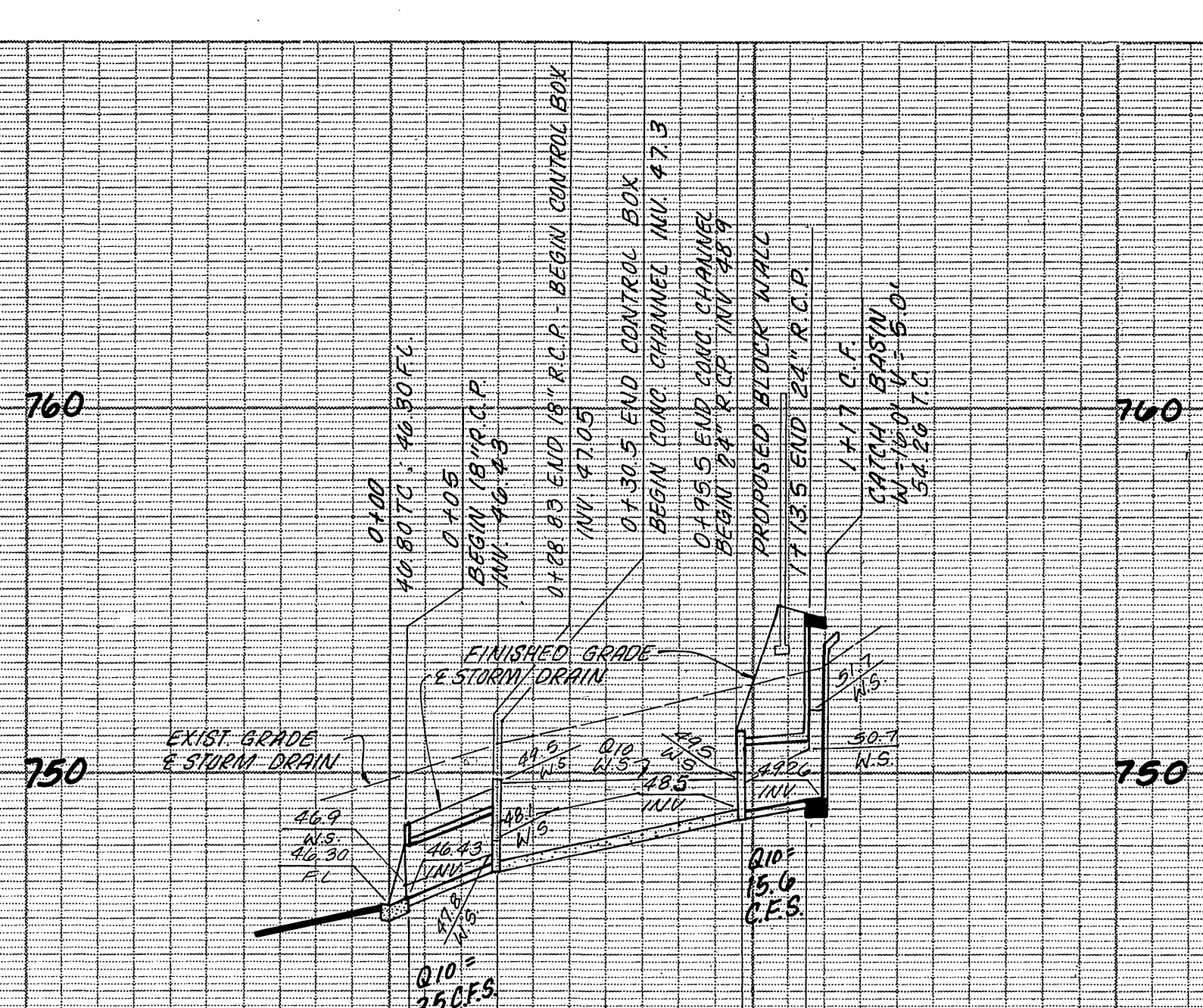
TRACT NO. 24843
CHAMPAGNE COURT
(PRIVATE STREET)
STREET PLAN & PROFILE
SCALE: HORIZ. 1" = 40'; VERT. 1" = 4'

ACCOUNT NO.
DRAWING NUMBER
R-3168
SHEET 3 OF 4



PROFILE

PROFILE SCALE
 HORIZ. 1" = 40'
 VERT. 1" = 4'

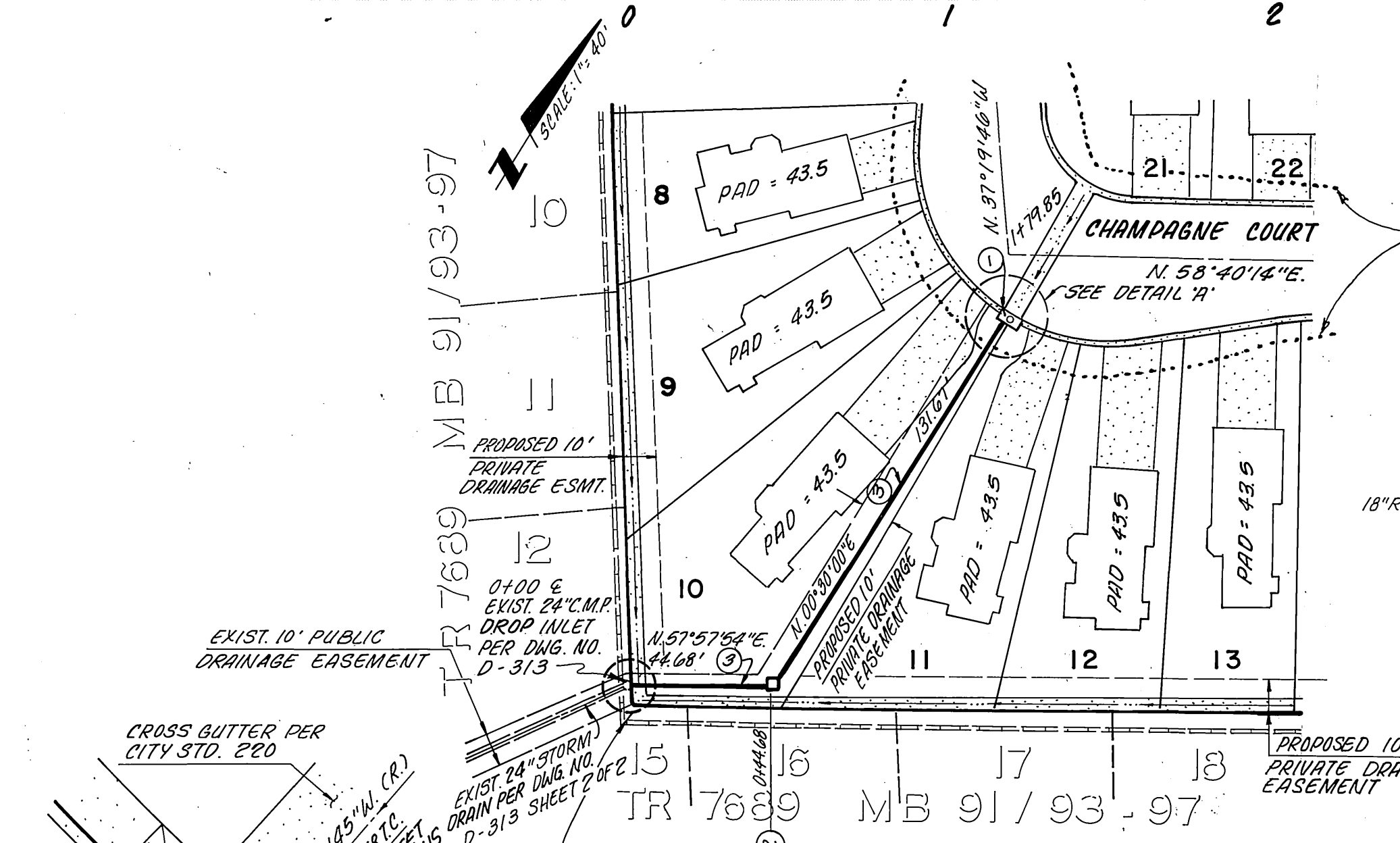


PROFILE

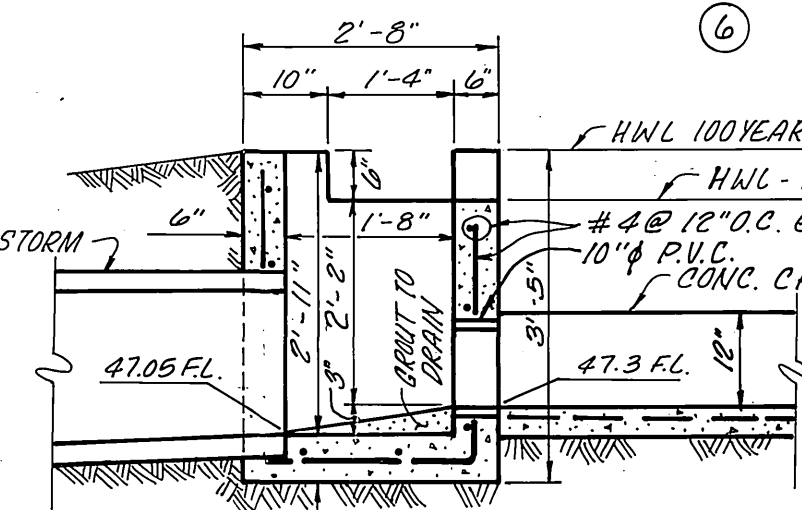
PROFILE SCALE
 HORIZ. 1" = 40'
 VERT. 1" = 4'

CONSTRUCTION NOTES

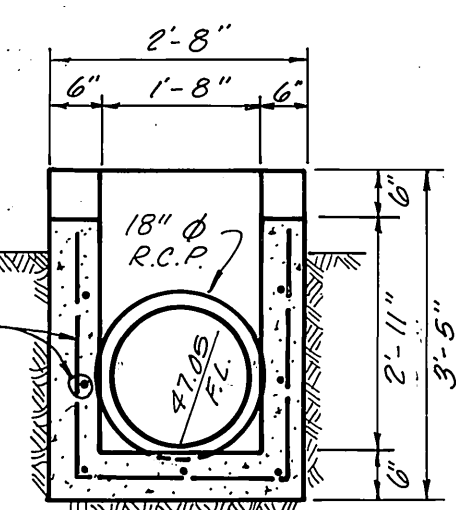
1. CONSTRUCT CATCH BASIN PER CITY OF RIVERSIDE STD. DWG. NO. 405
2. CONSTRUCT CLEANOUT BOX PER CITY OF RIVERSIDE STD. DWG. NO. 425, V=4.0'
3. CONSTRUCT 18" R.C.P. (1350 D)
4. CONSTRUCT 4" CONCRETE CHANNEL PER SHEET 1 OF GRADING PLAN
5. CONSTRUCT 24" R.C.P. (1350D)
6. CONSTRUCT UNDER SIDEWALK DRAIN PER CITY OF RIVERSIDE STD DWG. NO. 411 (MODIFIED)



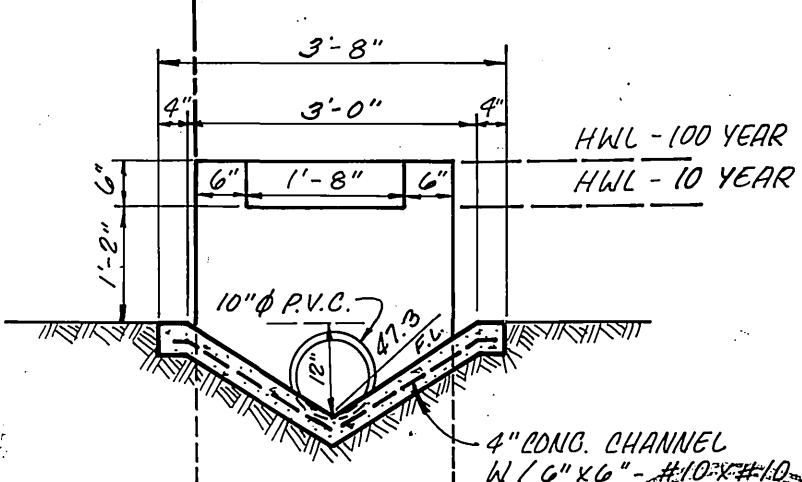
PLAN



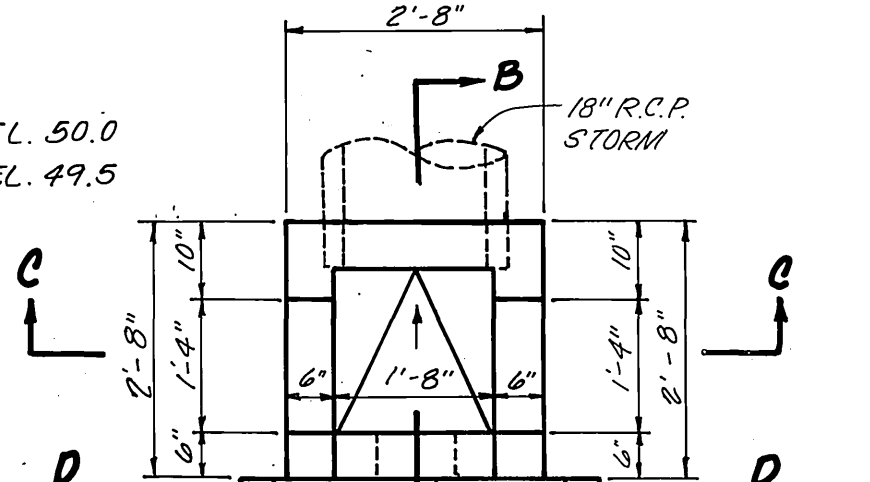
SECTION 'B'-'B'



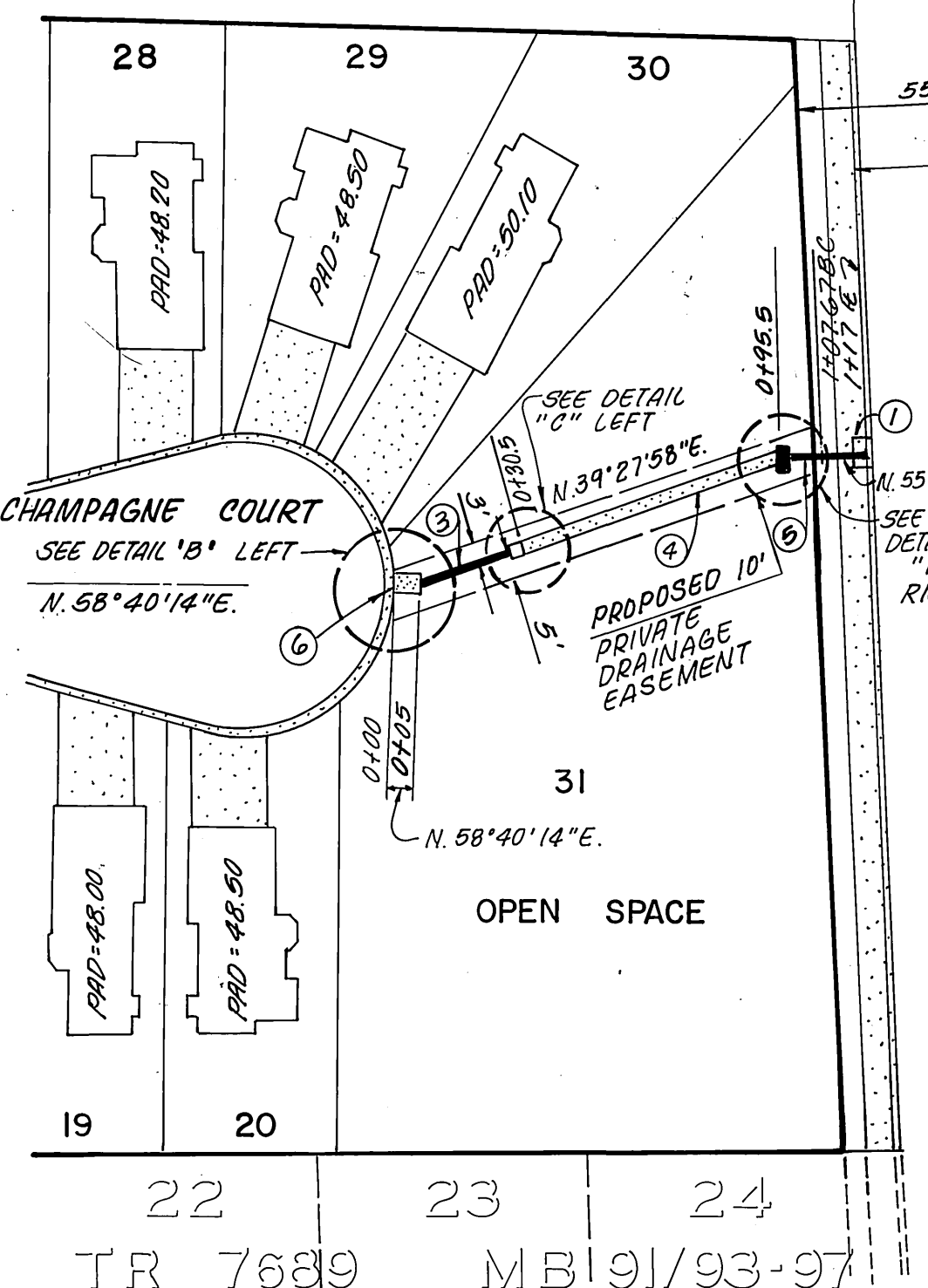
SECTION 'C'-'C'



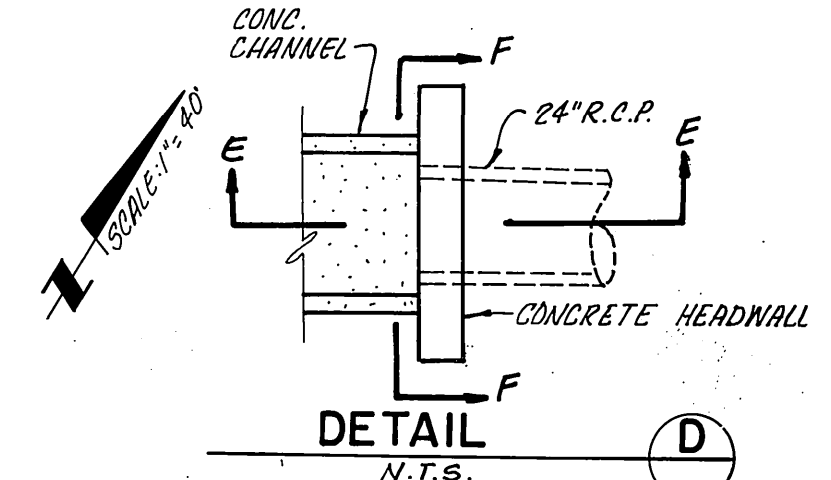
SECTION 'D'-'D'



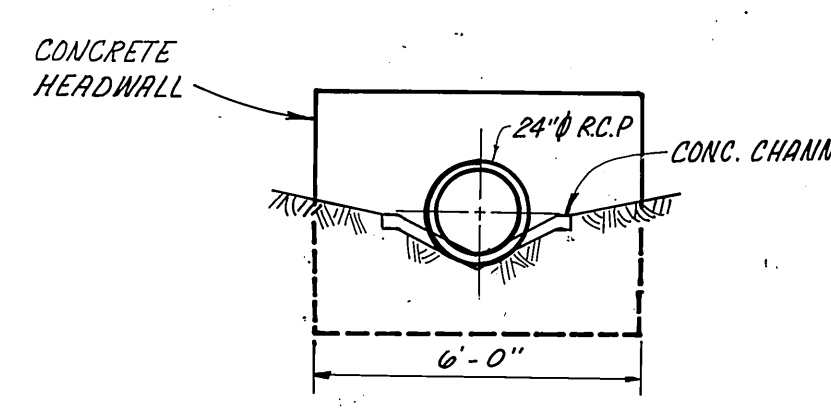
SECTION 'E'-'E'



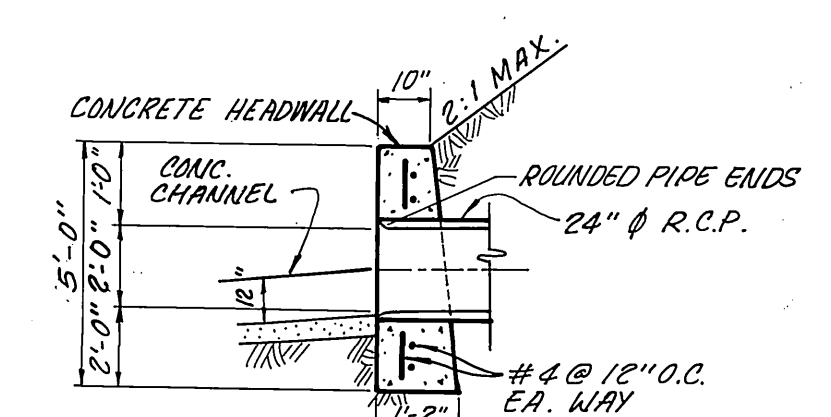
PLAN



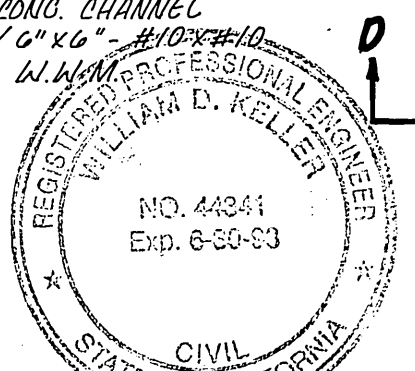
DETAIL 'D'



SECTION 'F'-'F'



SECTION 'E'-'E'



BENCH MARK:
 DK NAIL & CITY ENGINEER TAG IN S.W. LY CURB OF TYLER ST. S.E. LY OF OJAMPO ST.
 FB-K ELEV. = 754.98

WEBB, HAWKINS & ASSOCIATES
 CIVIL ENGINEERS & LAND SURVEYORS
 28481 Rancho California Road • Suite 108
 Rancho California, California 92350 • (714) 676-2443
 APPROVED BY: *William D. Keller*
 REGISTERED CIVIL ENGINEER NO. 44341
 REGISTRATION EXPIRE 6-30-83

CITY OF RIVERSIDE
PUBLIC WORKS DEPARTMENT
 APPROVED BY: *Doug Bell*
 PRINCIPAL ENGINEER DATE: 7/22/70
 PARK DEPARTMENT 744.40 JKA
 TRAFFIC DIVISION 7-22-70
 CHIEF P.W. ENGINEER 7:25-40 (11/6)
 723/0 LAR

TRACT NO. 24843
STREET PLANS
 PRIVATE
 STORM DRAIN PLAN & PROFILE
 SHEET 4 OF 4

ACCOUNT No.
 DRAWING NUMBER
R-3168
 SHEET 4 OF 4

SCALE: 1" = 40'