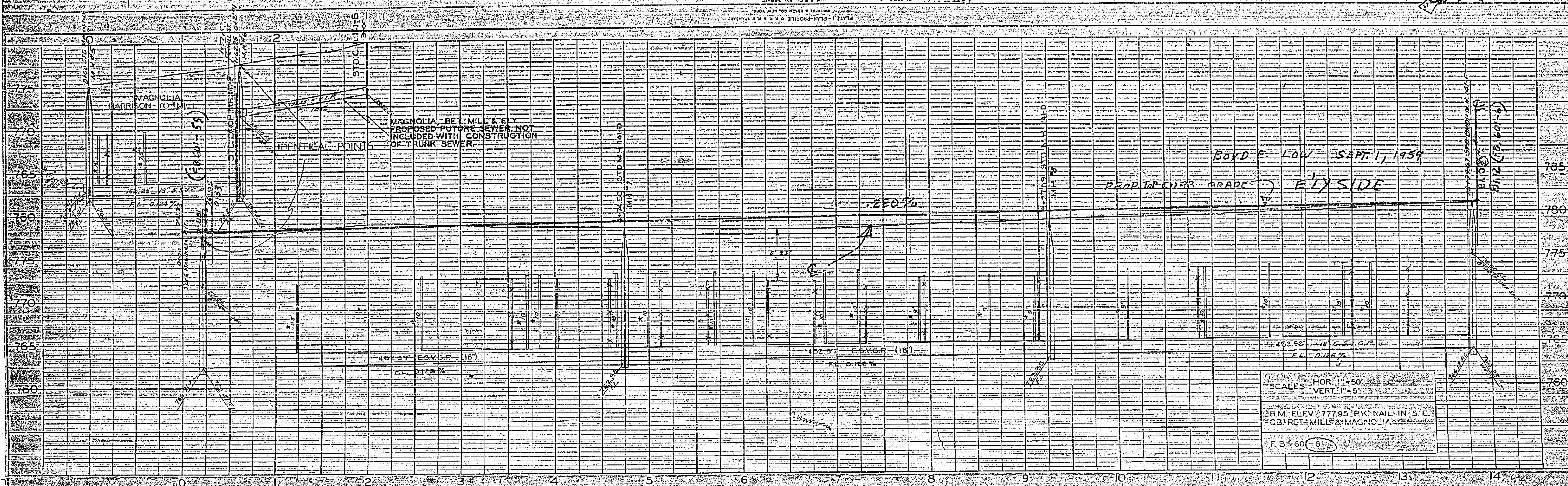


MISSING

MISSING

PRELIMINARY

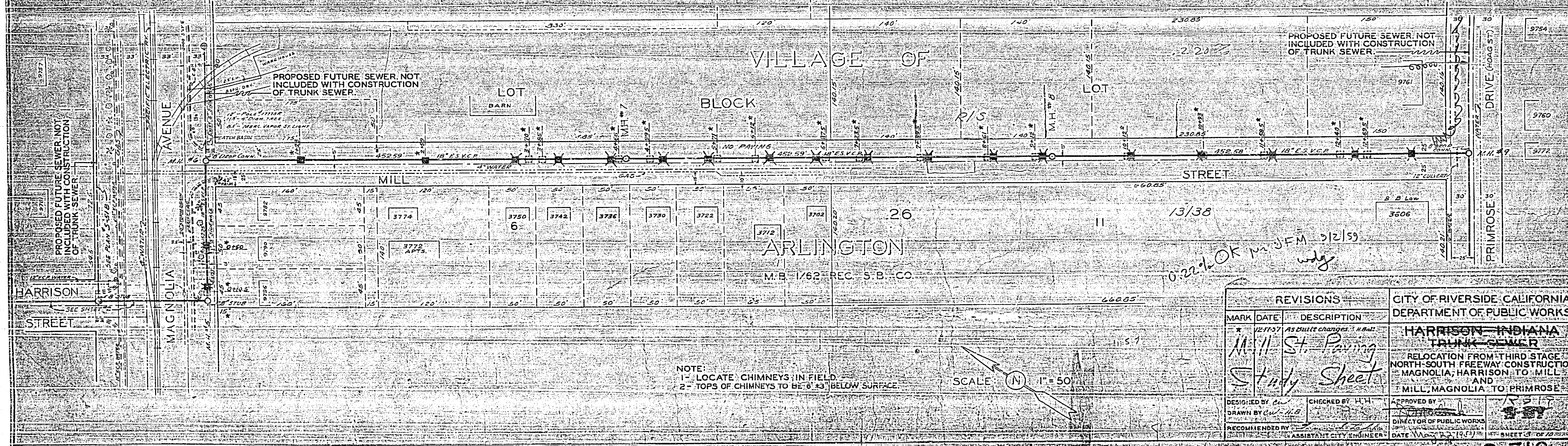


15781.67
15946.67

DATE	DESCRIPTION
12/12/38	PLANNING
1/15/39	DESIGN
2/15/39	CONSTRUCTION

Boyd E. Low Supt. 1/1939
PROD TOP CURB GRADE ELYSIDE

SCALE: HOR. 1" = 50'
VERT. 1" = 5'
B.M. ELEV. 777.95 PK. NAIL IN S.E. CORNER MILL & MAGNOLIA
F.B. 60 (6)



DATE	DESCRIPTION
12/12/38	PLANNING
1/15/39	DESIGN
2/15/39	CONSTRUCTION

NOTE:
1 - LOCATE CHIMNEYS IN FIELD
2 - TOPS OF CHIMNEYS TO BE 6" 43" BELOW SURFACE.

REVISIONS			CITY OF RIVERSIDE - CALIFORNIA DEPARTMENT OF PUBLIC WORKS
MARK	DATE	DESCRIPTION	
M-11	12/15/38	As Built changes - H.B.	HARRISON-INDIANA TRUNK SEWER RELOCATION FROM THIRD STAGE NORTH-SOUTH FREEWAY CONSTRUCTION MAGNOLIA, HARRISON, TO MILL AND MILL, MAGNOLIA, TO PRIMROSE

DESIGNED BY: C.W. H.B.
DRAWN BY: C.W. H.B.
CHECKED BY: H.H.
APPROVED BY: [Signature]
DIRECTOR OF PUBLIC WORKS
DATE MADE: 12/15/38
SHEET 5 OF 22

A-319

MISSING

MISSING

MISSING

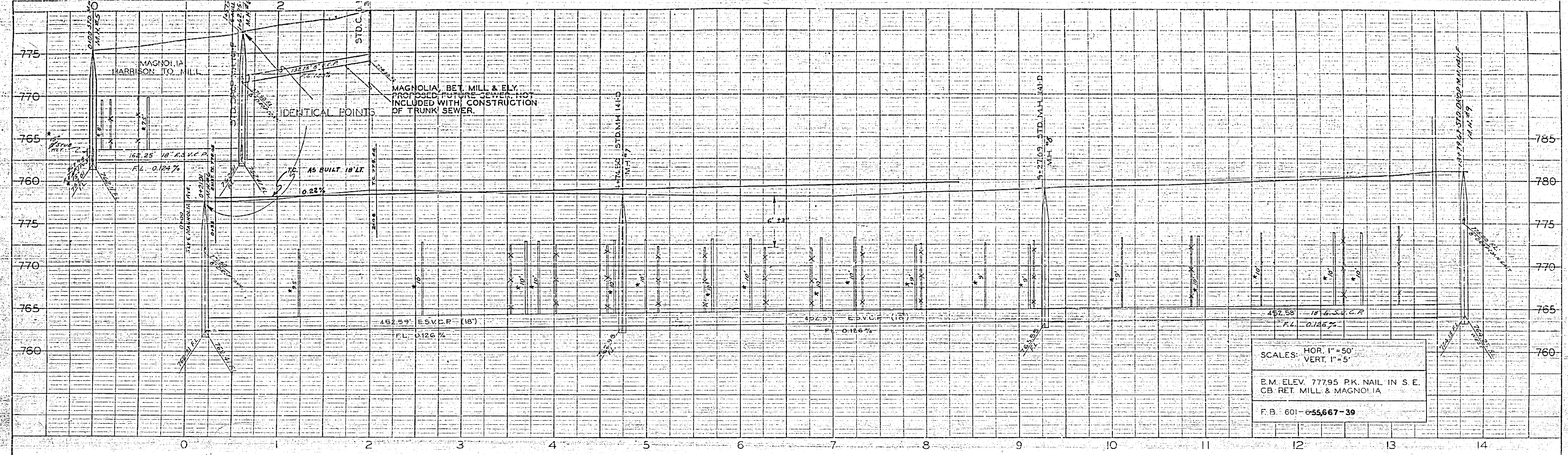
MISSING

MISSING

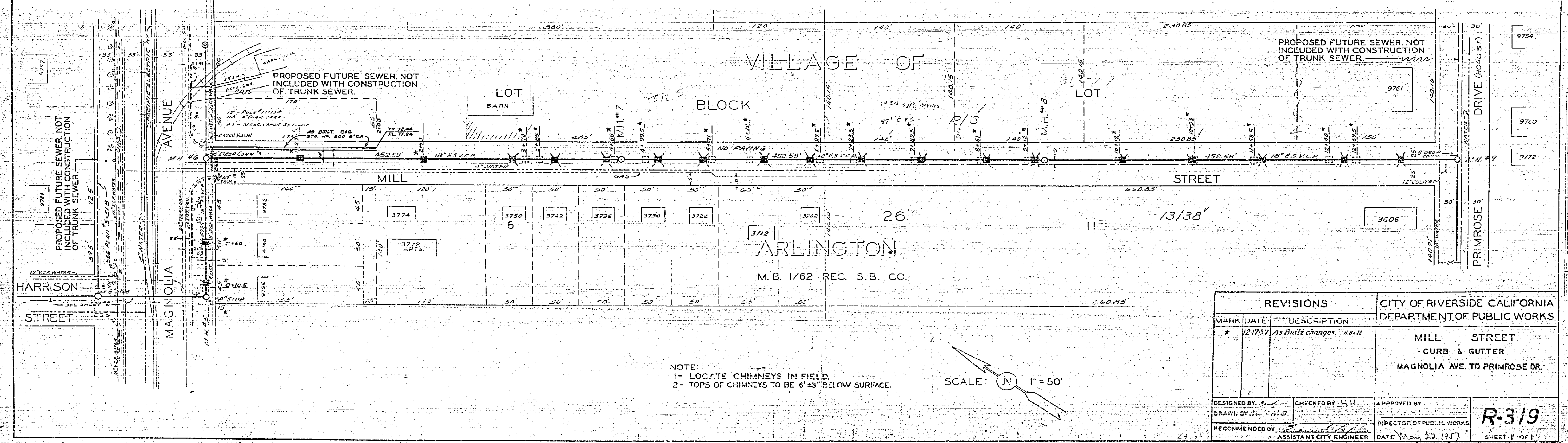
MISSING

MISSING

PLATE 1 - PLAN/PROFILE OF R.R. & S. STANLEY
 RIVERSIDE, CALIFORNIA
 1957



NO.	DATE	DESCRIPTION
1		AS BUILT CHANGES



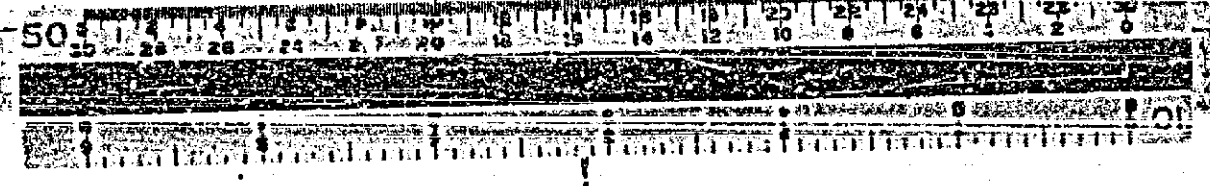
NO.	DATE	DESCRIPTION
1		AS BUILT CHANGES

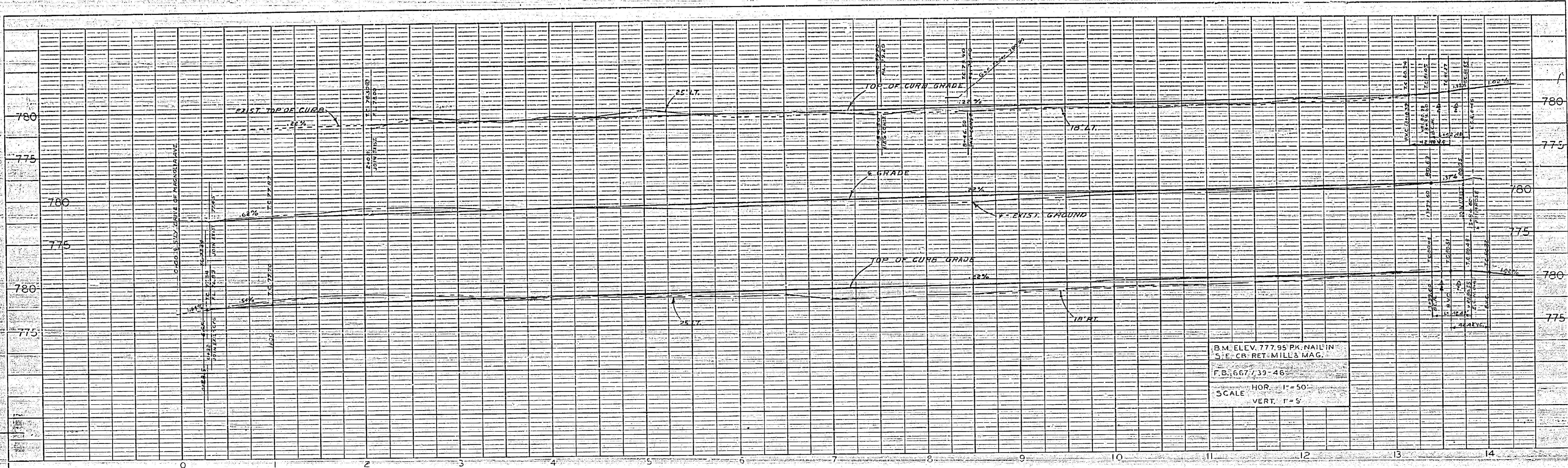
NOTE:
 1 - LOCATE CHIMNEYS IN FIELD.
 2 - TOPS OF CHIMNEYS TO BE 6"±3" BELOW SURFACE.

SCALE: 1" = 50'

REVISIONS		CITY OF RIVERSIDE CALIFORNIA DEPARTMENT OF PUBLIC WORKS	
MARK	DATE	DESCRIPTION	
*	12/17/57	As Built changes. H.B.U.	

DESIGNED BY: [Signature]	CHECKED BY: H.H.	APPROVED BY: [Signature]	R-319
DRAWN BY: [Signature]		DIRECTOR OF PUBLIC WORKS	
RECOMMENDED BY: [Signature]	ASSISTANT CITY ENGINEER	DATE: May 25, 1957	

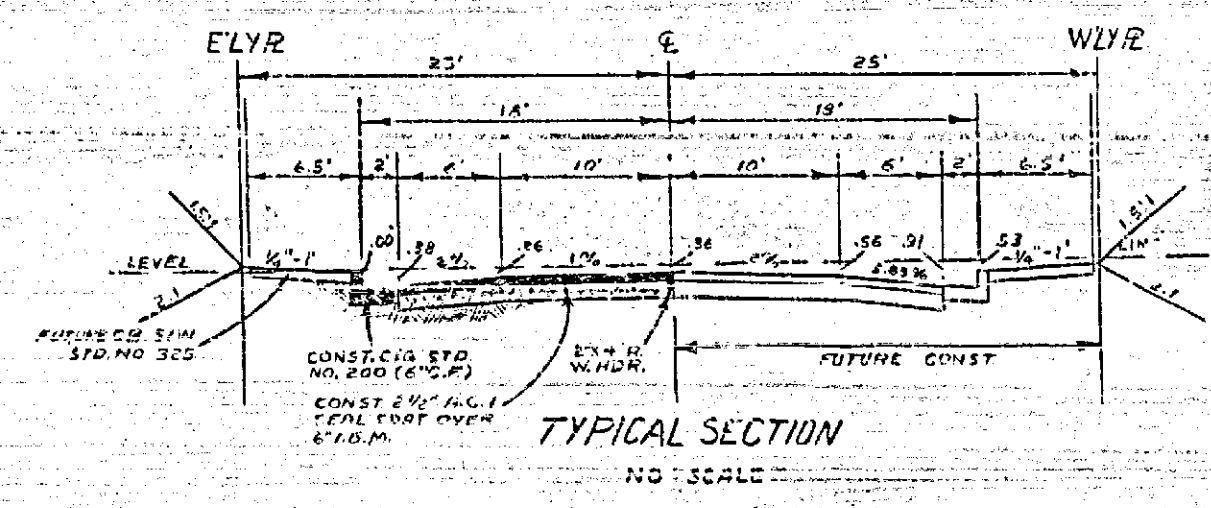
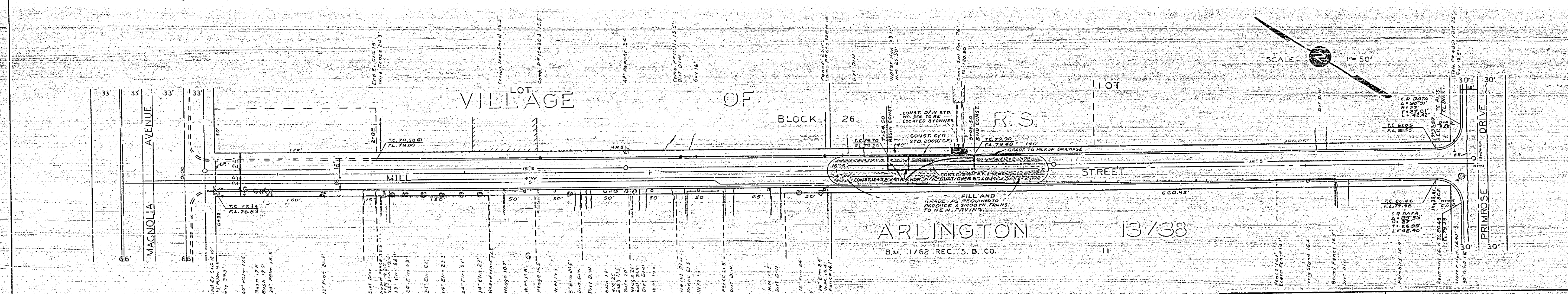




B.M. ELEV. 777.95 PK. NAIL IN
S.E. COR. RET. MILL'S MAG.
F.B. 667,39-46
SCALE HOR. 1" = 50'
VERT. 1" = 5'

DATE	BY	REVISION

DATE	BY	REVISION



NOTE
ALL CONSTRUCTION SHALL BE IN ACCORDANCE WITH THE STANDARDS & SPECIFICATIONS NO. 461 OF THE CITY OF RIVERSIDE, DEPT. OF PUBLIC WORKS.

REVISIONS			CITY OF RIVERSIDE - CALIFORNIA DEPARTMENT OF PUBLIC WORKS	
MARK	DATE	DESCRIPTION		
			MILL STREET	
			MAGNOLIA AVENUE TO PRIMROSE DRIVE	
DESIGNED BY B.L.	CHECKED BY <i>cm</i>	APPROVED BY <i>Amal</i>	R-319	
DRAWN BY B.L.		DIRECTOR OF PUBLIC WORKS		
RECOMMENDED BY <i>cm</i>	ASSISTANT CITY ENGINEER	DATE 4-20-62		