

RIVERSIDE CITY OF RIVERSIDE CALIFORNIA

PUBLIC WORKS DEPARTMENT

OVERLOOK PARKWAY MEDIANS - PHASE II WASHINGTON STREET TO 500' E'LY. OF OCOTILLO ROAD

CONSTRUCTION LEGEND

CENTER LINE — C —
RIGHT-OF-WAY — R/W —
SUBDIVISION LOT LINE — PL —

TOP OF SLOPE — T —
TOE OF SLOPE — E —
DIRECTION OF FLOW — D —

- CONSTRUCT STRUCTURAL SECTION OF 0.25' DGAC OVER 0.83' CRUSHED AGGREGATE BASE OR 0.63' DGAC OVER COMPACTED NATIVE.
- CONSTRUCT VARIABLE THICKNESS DGAC OVERLAY.
- REMOVE AND REPLACE STRUCTURAL SECTION WITH 0.25' DGAC OVER 0.83' CRUSHED AGGREGATE BASE OR 0.63' DGAC OVER COMPACTED NATIVE.
- REMOVE AND REPLACE STRUCTURAL SECTION WITH 0.63' AC OVER COMPACTED NATIVE.

SPECIFIC CONSTRUCTION NOTES

- NUMBERS ABOVE 100 IN A HEXAGON ON THE PLAN REFER TO THE RESPECTIVE STANDARD DRAWING AND SHALL BE CONSTRUCTED ACCORDINGLY, UNLESS MODIFICATIONS ARE NOTED ON THE PLAN OR COVER SHEET. ANY NUMBER SHOWN BELOW THE STANDARD DRAWING NUMBER INDICATES THE SPECIFIC ALTERNATE TO BE CONSTRUCTED.
- INDICATES DETAIL
- INDICATES SHEET NUMBER
- MODIFICATIONS OF THE STANDARD DRAWING ARE THOSE SHOWN ON THE NOSE AND CATCH BASIN DETAIL ON SHEET 5.
- CONSTRUCT CLEANOUT BOX PER STANDARD DRAWING 425 WITH A WINDOW OPENING AS SHOWN ON THE WINDOW DETAIL (SECTION A-A) ON SHEET 5.

GENERAL CONSTRUCTION NOTES

- 1 CONSTRUCTION SHALL BE IN ACCORDANCE WITH THE CITY OF RIVERSIDE STANDARD DRAWINGS AND STANDARD SPECIFICATIONS FOR PUBLIC WORKS CONSTRUCTION, 1991 EDITION.
- 2 EXISTING UTILITIES SHOWN ON THIS PLAN ARE PLOTTED FROM UTILITY RECORDS. THE CONTRACTOR IS REQUIRED TO TAKE DUE PRECAUTIONARY MEASURES TO LOCATE AND PROTECT ALL UTILITIES WHETHER OR NOT SHOWN ON THIS PLAN. IF THE COVER OF A UTILITY IS KNOWN, IT IS SHOWN IN THE PROFILE UTILITIES IN THE PROFILE AS INDICATES THAT THE COVER IS UNKNOWN, BUT THE UTILITY IS NOT EXPECTED TO CONFLICT WITH THE PROPOSED IMPROVEMENTS.
- 3 ALL ELEVATIONS SHOWN ON THE PLANS SHALL BE STAKED IN THE FIELD.
- 4 PRIME CONTRACTORS BIDDING THIS WORK SHALL HAVE A CLASS A OR C-12 LICENSE.
- 5 CONFLICTING UTILITIES SHOWN WITHIN THE CONSTRUCTION AREA WILL BE RELOCATED PRIOR TO CONSTRUCTION.

EXISTING UNDERGROUND & TOPOGRAPHY LEGEND

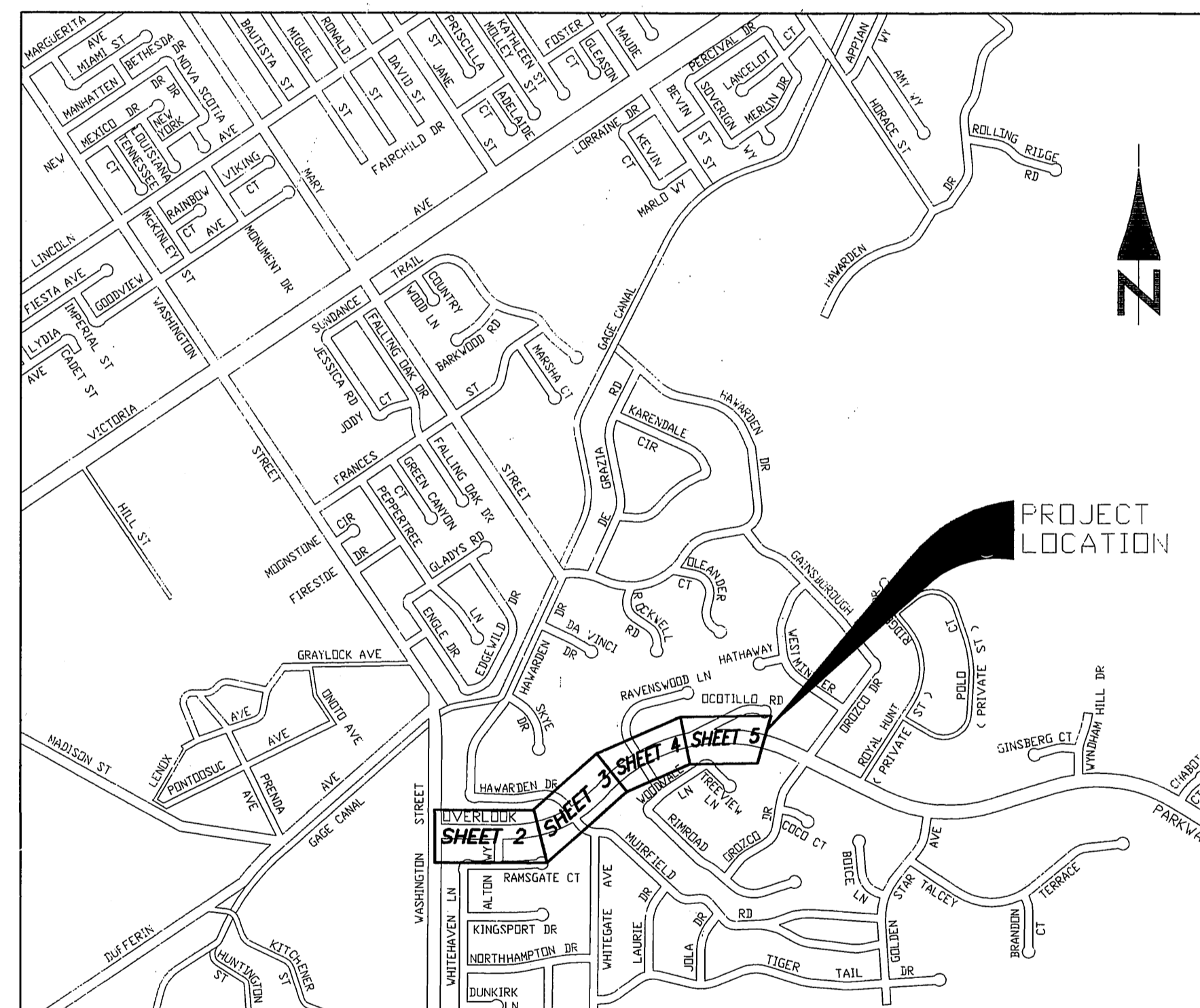
EXISTING UNDERGROUND UTILITIES:

- | | |
|-------------------------------------|---------------------------------|
| SANITARY SEWER — 8" — | TELEPHONE CONDUIT — T — |
| WATER LINE — 6" — | ELECTRICAL CONDUIT — E — |
| STORM DRAIN — 24" SD — | ELECTROLIGHTING CONDUIT — ELC — |
| GAS LINE — 3" G — | TRAFFIC SIGNAL — SIG — |
| ABANDONED UTILITY — 6" (GAS/AN/D) — | FIRE ALARM — F — |

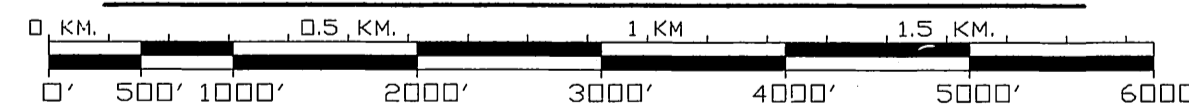
EXISTING TOPOGRAPHY:

- BLOCK WALL
 - BOARD FENCE
 - WIRE FENCE
 - CHAIN LINK FENCE
- TOP OF SLOPE
 TOE OF SLOPE
 DIRECTION OF FLOW

- | | | |
|-------------------------|-----------------------------------|---|
| SANITARY SEWER M.H. | POLE & GUY ANCHOR | PEDESTRIAN PUSH BUTTON |
| SANITARY SEWER CLEANOUT | POWER POLE | RAILROAD TRACKS |
| STORM DRAIN M.H. | TELEPHONE POLE | RAILROAD SIGN |
| IRRIGATION WEIR | TELEPHONE RISER | RAILROAD SIGNAL |
| WATER M.H. | JOINT USE POLE | TRAFFIC SIGNAL |
| GAS M.H. | PULL BOX | TRAFFIC SIGNAL ON MAST ARM |
| ELECTRIC M.H. | TRAFFIC SIGN | TRAFFIC SIGNAL CONTROLLER |
| TELEPHONE M.H. | PARKING METER | TRAFFIC SIGNAL PRESSURE DETECTOR |
| WATER METER | FIRE ALARM BOX | TRAFFIC SIGNAL LOOP DETECTOR |
| FIRE HYDRANT | STREET NAME SIGN | STREET LIGHT & TRAFFIC SIGNAL ON MAST ARM |
| SPRINKLER HEAD | GAS METER | STREET LIGHT (UPRIGHT) |
| VALVE | MAIL BOX | STREET LIGHT ON MAST ARM |
| AIR VALVE | FAUCET | STEEL POST |
| AIR VENT | WALK-DON'T WALK PEDESTRIAN SIGNAL | WOOD POST |
| BUS STOP SIGN | ELECTROLYSIS TEST STATION | |
| BLOW-OFF VALVE | WHEEL STOP | |
| IRRIGATION STAND PIPE | A.C. BERM | |
| CONCRETE | | |
| ASPHALT | | |
| BUILDING | | |
| EDGE OF PAVEMENT | | |



PROJECT LOCATION PLAN



SCALE: 1"=1000'

IMPORTANT NOTICE
Section 4216/4217 of the Government Code requires a Dig Alert Identification Number to be issued before a 'Permit to Excavate' will be valid. For your Dig Alert I.D. Number call Underground Service Alert TOLL FREE 1-800-422-4133 Two working days before you dig.



ENGINEER IN RESPONSIBLE CHARGE
Ronald C. Mueller
RONALD C. MUELLER
R.C.E. No. 28910 expires 3/31/95
DATE 6/15/93

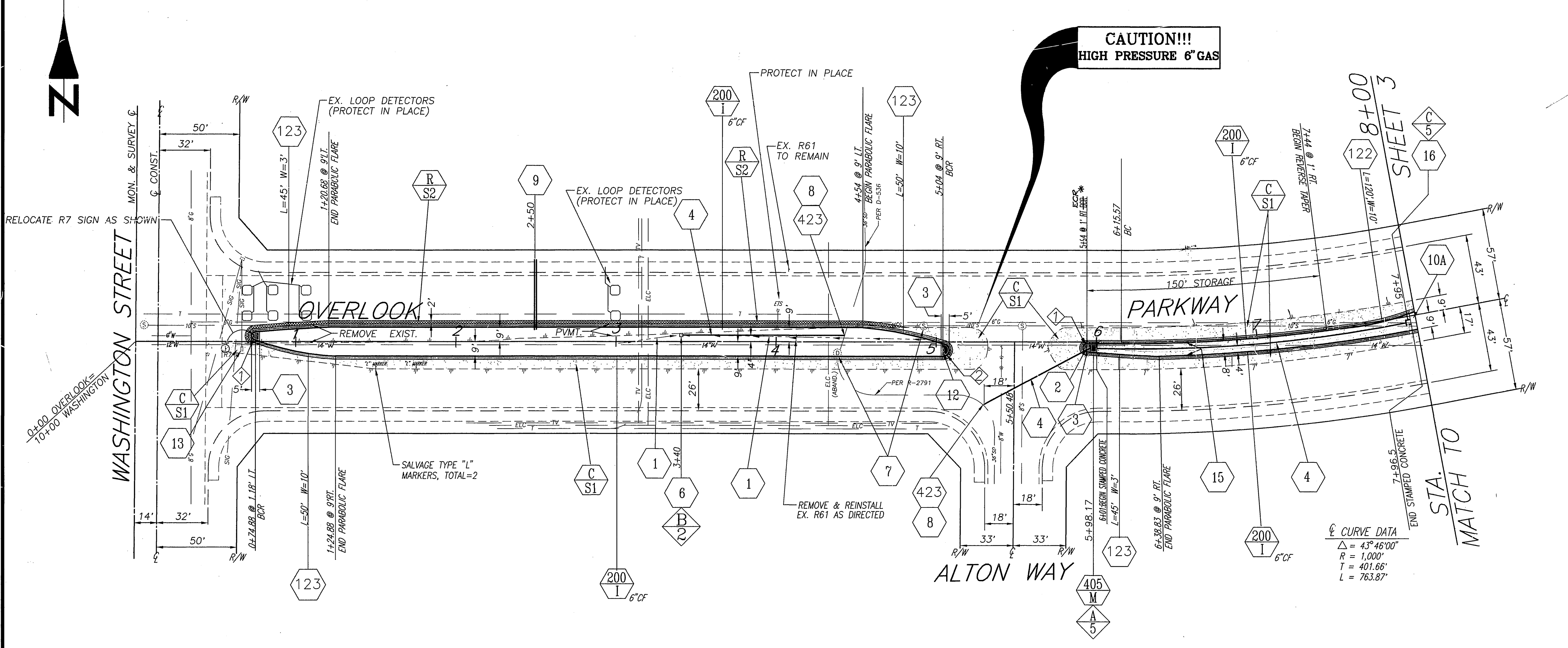
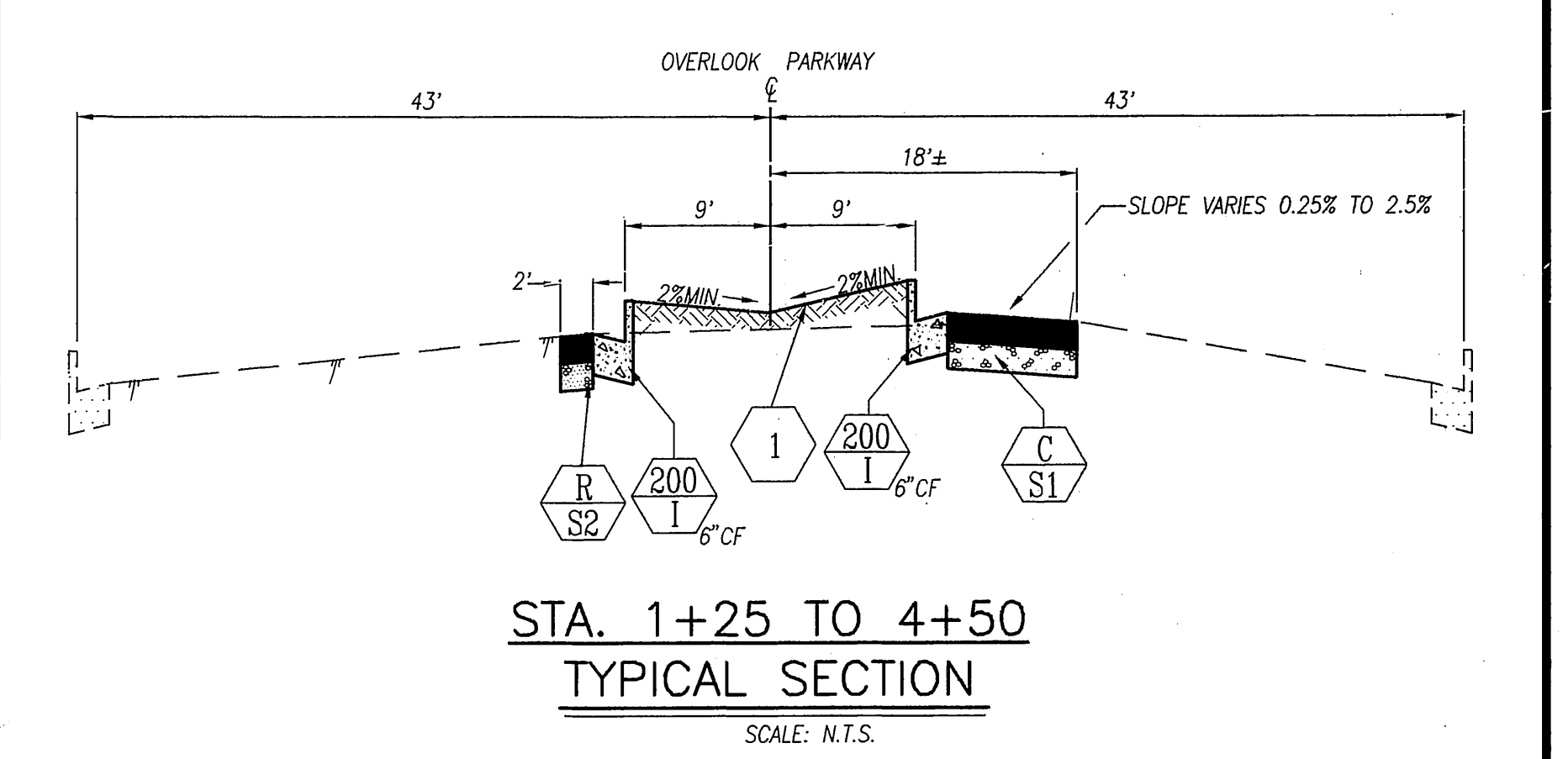
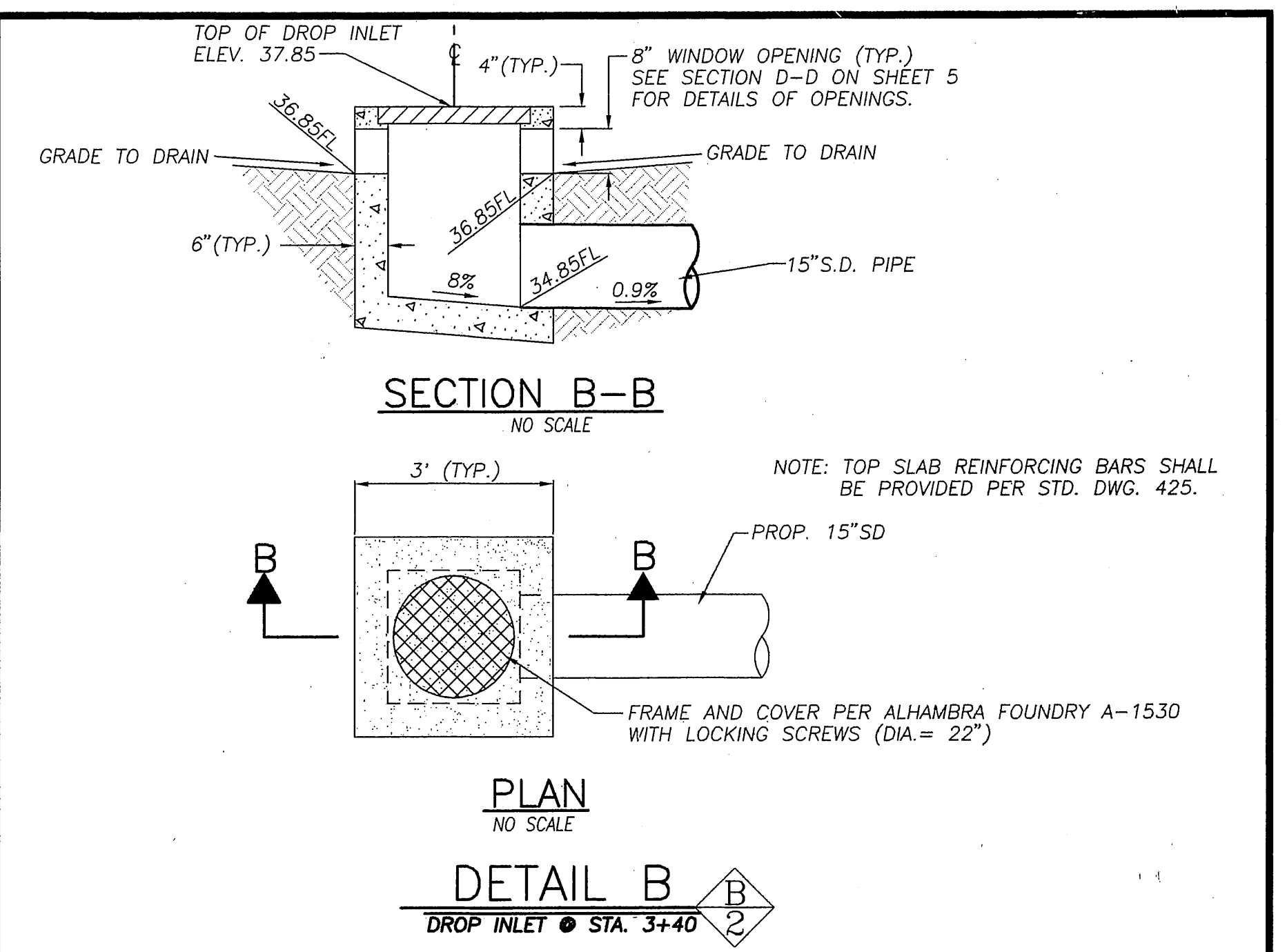
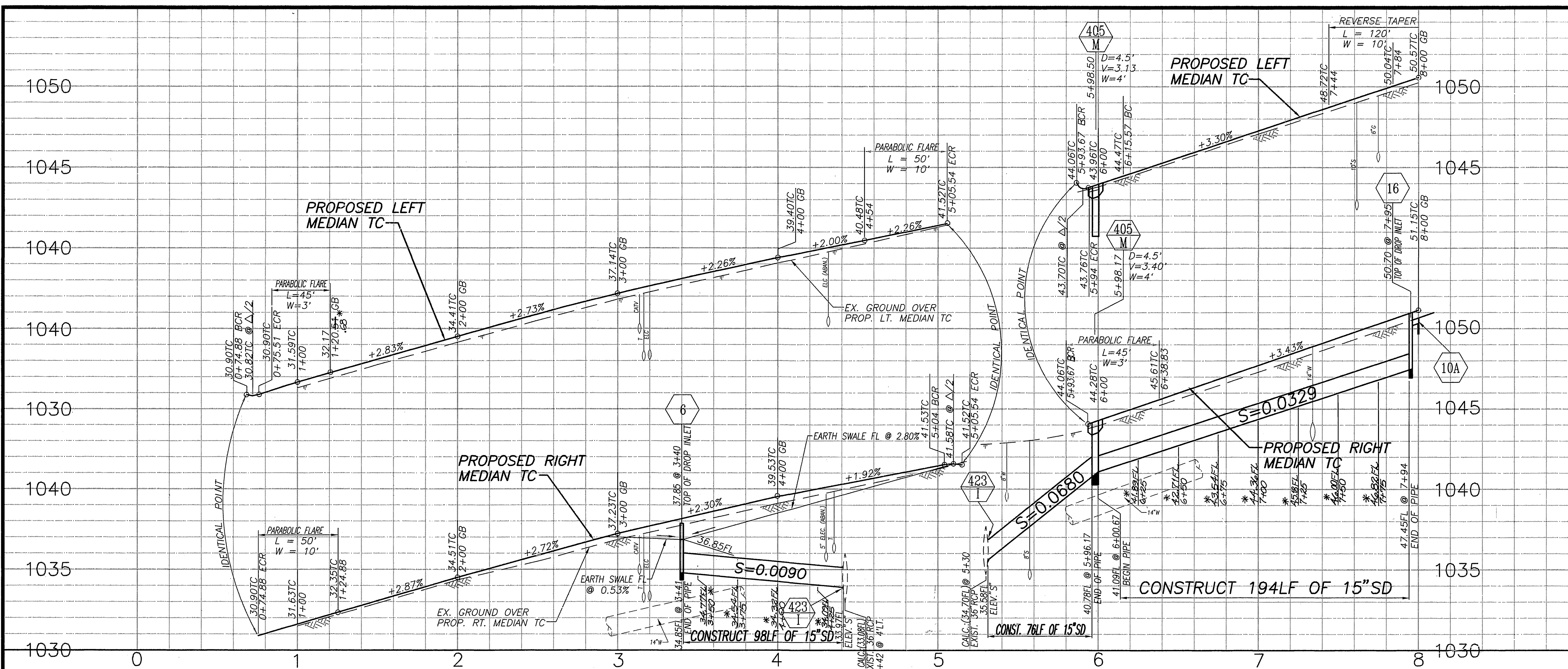
MARK	REVISIONS	APPR	DATE
DESIGNED BY <i>RM</i>	DRAWN BY <i>RM</i>	CHECKED BY <i>RM</i>	

CITY OF RIVERSIDE, CALIFORNIA
PUBLIC WORKS DEPARTMENT

APPROVED BY	BY	DATE
DEPUTY P.W. DIRECTOR	<i>MLC</i>	6/15/93
PRINCIPAL ENGINEER	<i>MLC</i>	6/15/93
CHIEF P.W. INSPECTOR	<i>MLC</i>	6/15/93
TRAFFIC DIVISION	<i>MLC</i>	6/15/93
SURVEYOR	<i>MLC</i>	6/15/93
STREET SERVICES	<i>MLC</i>	6/15/93
PARKS DEPARTMENT		

OVERLOOK PARKWAY
MEDIAN - PHASE II
BETWEEN WASHINGTON AND OROZCO

AS BUILT 7/24/97 R.M.
ACCT. NO. 430-541500-440223-20083
R-3293
SHEET 1 OF 5
FILE NO.



- CONSTRUCTION NOTES**
- 1 GRADE EARTHEN SWALE TO DRAIN PER TYPICAL SECTION SHOWN ABOVE.
 - 2 INSTALL R-7 TRAFFIC CONTROL SIGN PER STD. DWG. 666.
 - 3 CONSTRUCT 4" THICK CONCRETE IN MEDIAN NOSE.
 - 4 INSTALL 15" DIA. MEDIAN STORM DRAIN. SEE ABOVE FOR PIPE PROFILE. PIPE MATERIAL OPTIONS:
1. ASBESTOS CEMENT PIPE, D=2000
2. CORRUGATED POLYETHYLENE PIPE
3. POLY VINYL CHLORIDE, SCHEDULE 40
4. REINFORCED CONCRETE PIPE, 2000D
 - 6 CONSTRUCT DROP INLET PER DETAIL "B" AS SHOWN ON THE PLAN. SEE DETAIL ABOVE.
 - 7 ADJUST STORM DRAIN OR SEWER MANHOLE COVER TO GRADE.
 - 8 EXISTING STORM DRAIN PIPE TO BE FIELD LOCATED PRIOR TO ISSUING GRADE SHEETS.
 - 9 INSTALL 4" AND 2" PVC, SCHEDULE 40, PIPE IRRIGATION SLEEVES BY BORING BENEATH EXISTING IMPROVEMENTS.
 - 10A CONSTRUCT 4" THICK CONCRETE SWALED APRON. SEE DETAIL "C" ON SHEET 5.
 - 12 INSTALL R7 & R10(RT.) TRAFFIC CONTROL SIGN PER STD. DWG. 666.
 - 13 REMOVE TRAFFIC CONTROL PULL BOX AND ABANDON EMPTY CONDUITS.
 - 15 CONSTRUCT STAMPED CONCRETE IN MEDIAN ISLAND. COLOR SHALL BE SOMBRERO BROWN, C-25. USE RUNNING BOND COBBLE STONE PATTERN. CONSTRUCT DROP INLET PER DETAIL "C" AS SHOWN ON THIS PLAN. SEE SHEET 5 FOR DETAIL.
 - 16

F.B.: LL31/104
ELEV.: 1029.593
B.M.: F6-G, PK NAIL & TAG IN TOP OF CONC. VAULT ON THE WEST SIDE OF WASHINGTON ST., 30' N.L.Y. OF THE C.L. OF OVERLOOK PARKWAY PRODUCED.

CURVE DATA				
Δ	R	L	T	
1 172° 24' 19"	2.5'	7.52'	37.66'	
2 158° 11' 55"	4'	11.04'	20.77'	



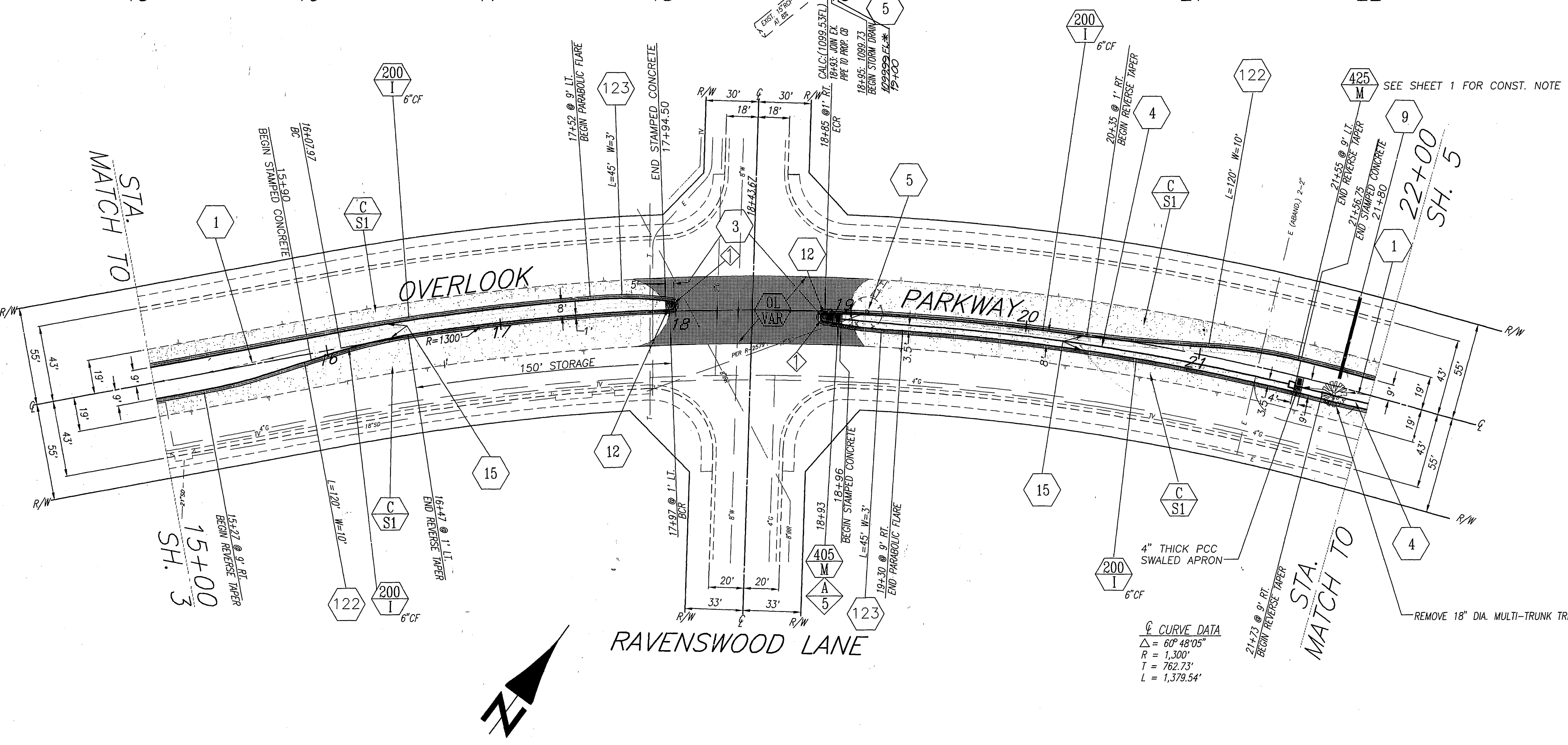
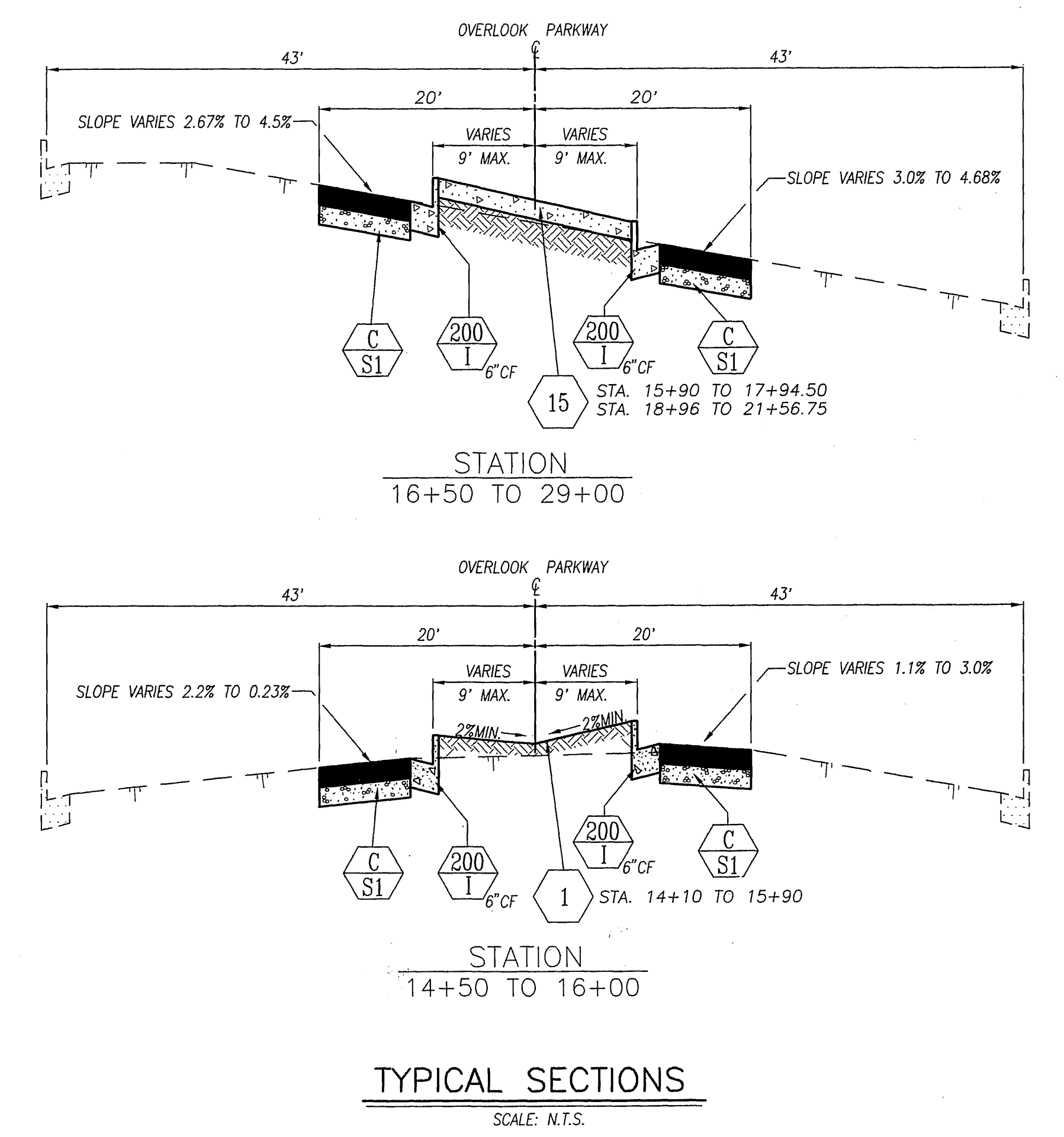
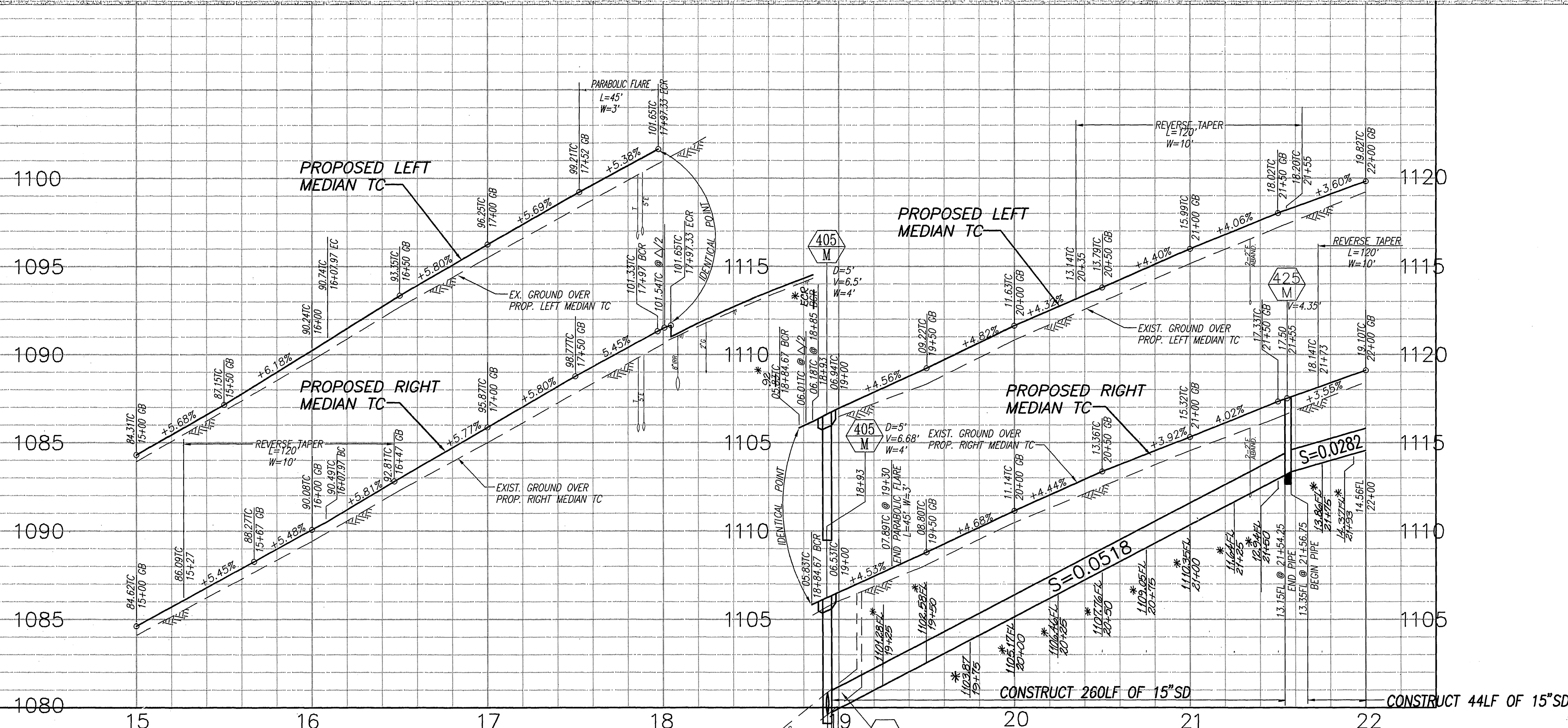
ENGINEER IN RESPONSIBLE CHARGE
Ronald C. Mueller
RONALD C. MUELLER
R.C.E. No. 29510 expires 3/31/95
DATE 6/15/93

MARK	REVISIONS	APPR.	DATE

CITY OF RIVERSIDE, CALIFORNIA
PUBLIC WORKS DEPARTMENT
APPROVED BY: [Signature]
DATE: 6/15/93

OVERLOOK PARKWAY
MEDIAN-PHASE II
BETWEEN WASHINGTON AND OROZCO
HORIZ. SCALE: 1" = 40' VERT. SCALE: 1" = 4'
R-3293
SHEET 2 OF 5
FILE NO.

INDEXED 9-1-93 GA



FB : LL31/104
 ELEV. : 1029.593
 BM : F6-G, PK NAIL & TAG IN TOP OF CONC. VAULT ON THE WEST SIDE OF WASHINGTON ST., 30' N.Y. OF THE CL OF OVERLOOK PARKWAY PRODUCED.

CURVE DATA				
Δ	R	L	T	
1	172° 24' 19"	2.5'	7.52'	37.66'



ENGINEER IN RESPONSIBLE CHARGE
 Ronald C. Mueller
 RONALD C. MUELLER
 R.C.E. No. 29810 expires 3/31/95
 DATE 6/15/93

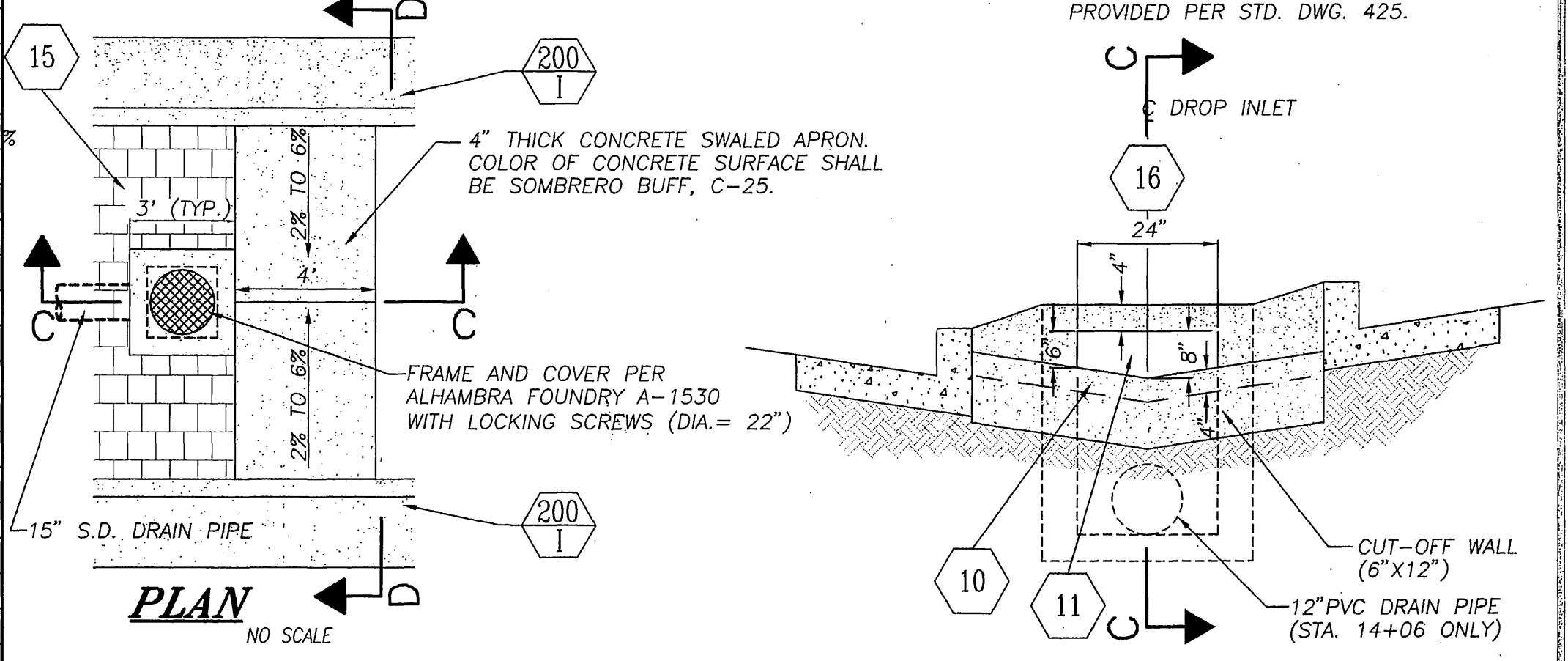
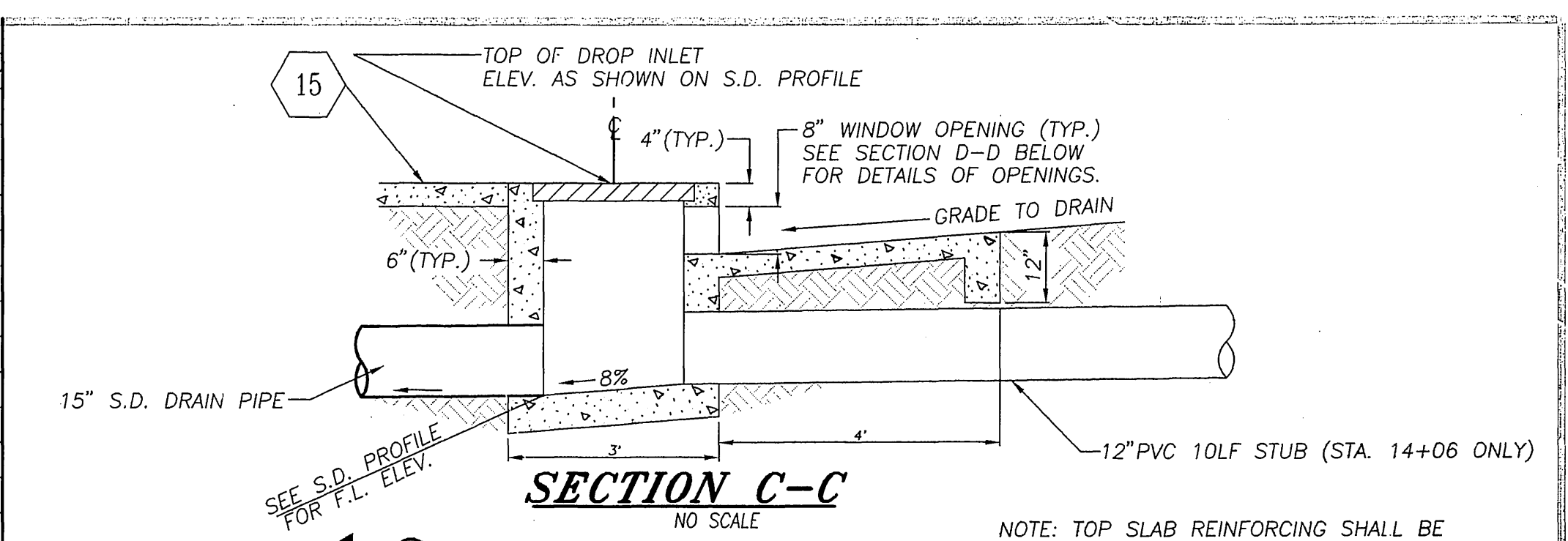
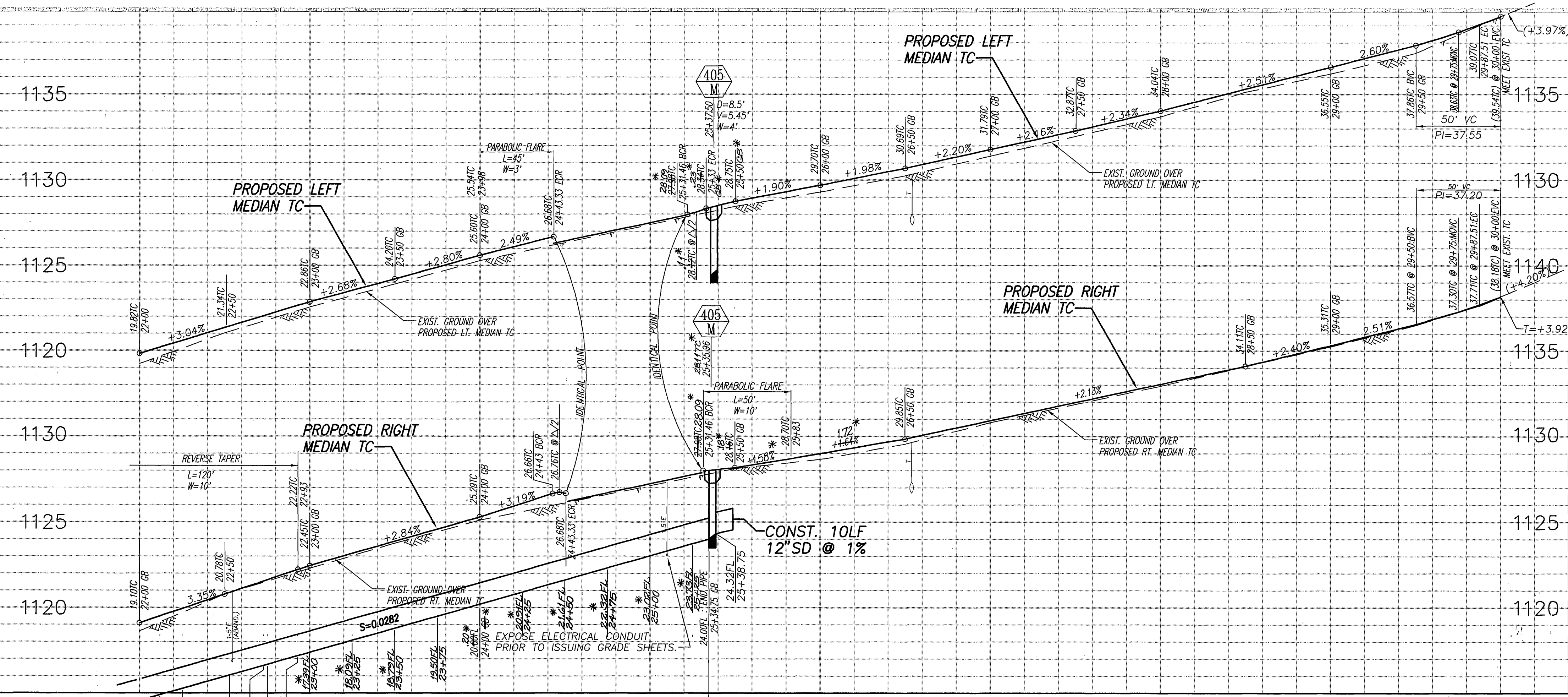
DESIGNED BY	DRAWN BY	CHECKED BY
RM	RJM	REM

CITY OF RIVERSIDE, CALIFORNIA
 PUBLIC WORKS DEPARTMENT
 APPROVED BY: [Signature]
 DEPUTY P.W. DIRECTOR
 PRINCIPAL ENGINEER
 CHIEF P.W. INSPECTOR
 TRAFFIC ENGINEER
 SURVEYOR
 STREET SERVICES
 PARKS DEPARTMENT

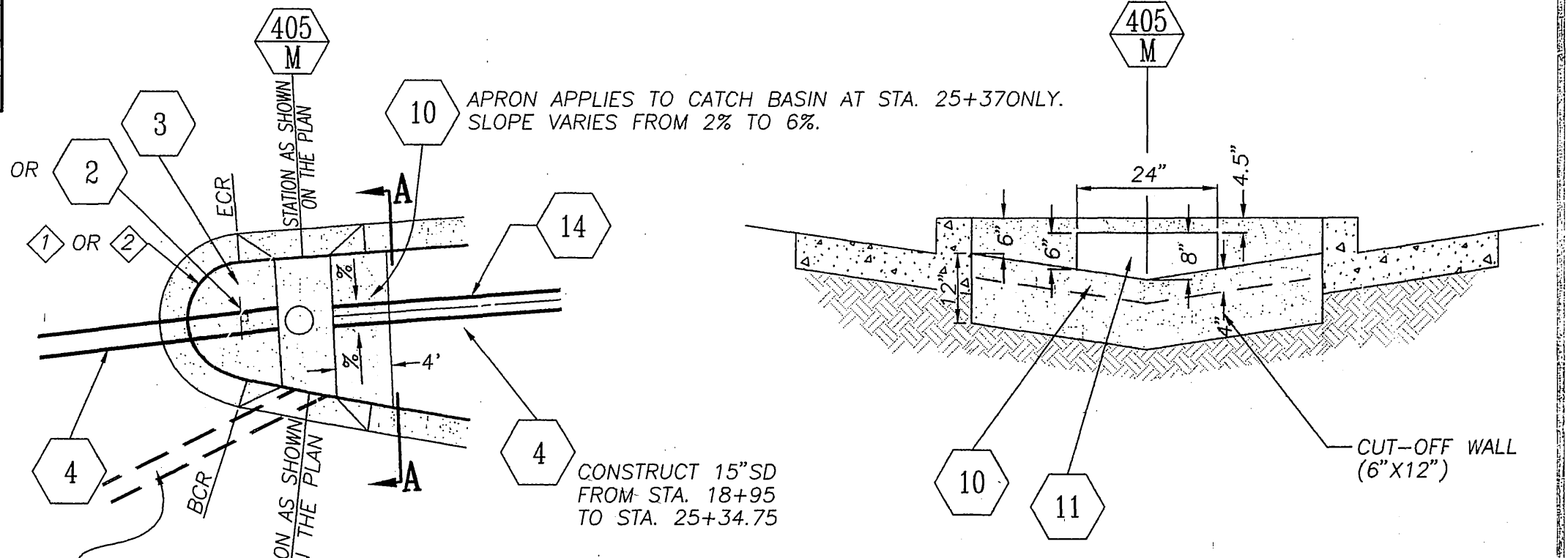
OVERLOOK PARKWAY
 MEDIAN-PHASE II
 BETWEEN WASHINGTON AND OROZCO
 HORIZ. SCALE: 1" = 40' VERT. SCALE: 1" = 4'
 ACCT. NO. 430-541500-440223-20083
 R-3293
 SHEET 4 OF 5
 FILE NO.

- CONSTRUCTION NOTES**
- GRADE EARTHEN SWALE TO DRAIN PER TYPICAL SECTION SHOWN ABOVE.
 - CONSTRUCT 4" THICK CONCRETE IN MEDIAN NOSE.
 - INSTALL 15" DIA. MEDIAN STORM DRAIN. SEE ABOVE FOR PIPE PROFILE.
 - PIPE MATERIAL OPTIONS:
 1. ASBESTOS CEMENT PIPE, D-2000
 2. CORRUGATED POLYETHYLENE PIPE
 3. POLY VINYL CHLORIDE, SCHEDULE 40
 4. REINFORCED CONCRETE PIPE, 20000
 - REMOVE INTERFERING PORTIONS OF EXISTING 15" RCP (APPROXIMATELY 20') INCLUDING CSP DROP INLET. END OF PIPE SHALL BE FLUSH WITH INSIDE WALL OF CATCH BASIN.
 - INSTALL 4" AND 2" PVC, SCH. 40 PIPE IRRIGATION SLEEVES.
 - CONSTRUCT 4" THICK CONCRETE SWALED APRON. SEE DETAIL "C" ON SHEET 5.
 - INSTALL R7 AND R10 (RT.) TRAFFIC CONTROL SIGN PER STANDARD DRAWING 666.
 - CONSTRUCT STAMPED CONCRETE IN MEDIAN ISLAND. COLOR SHALL BE SOMBRERO BUFF, C-25. USE RUNNING BOND, COBBLE STONE PATTERN.

INDEXED 9-1-93 4H



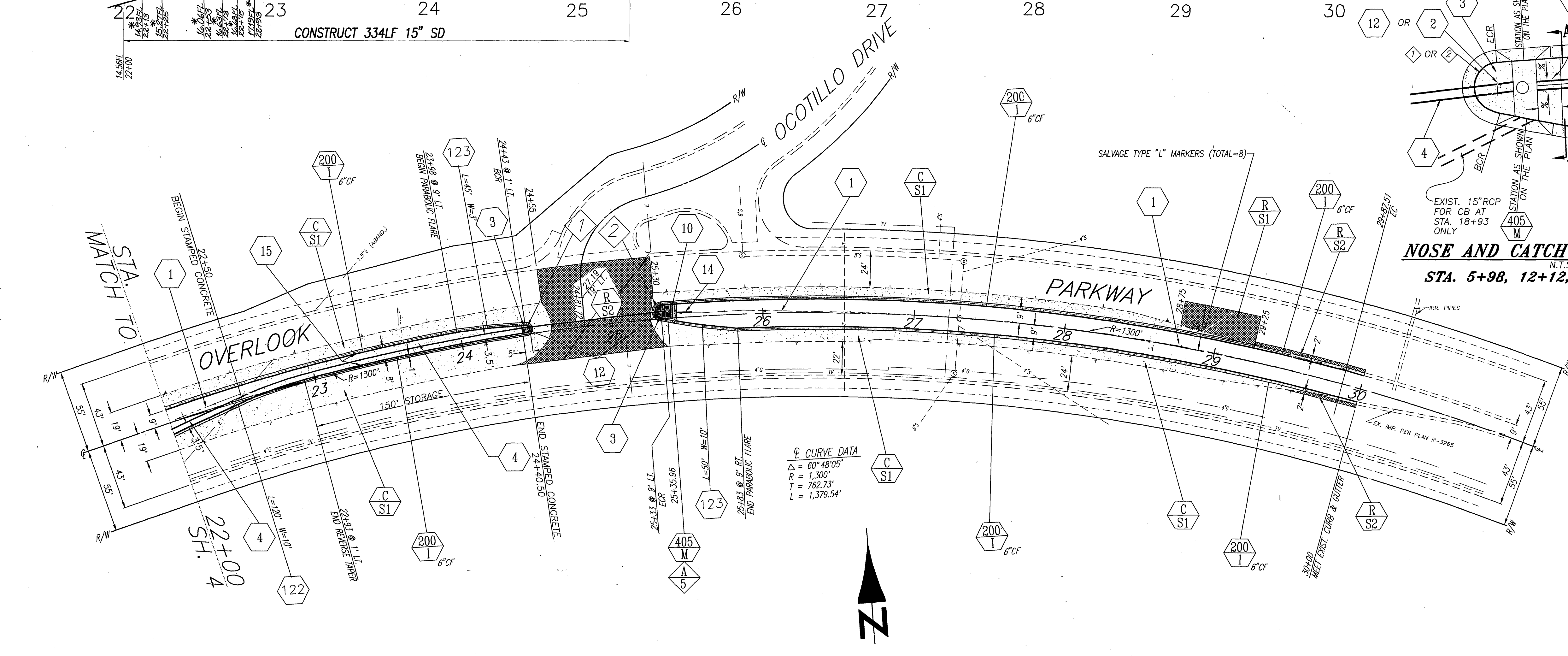
DETAIL C
DROP INLET @ STA. 7+95 & 14+06
NO SCALE



SECTION A-A WINDOW DETAIL
N.T.S.

NOSE AND CATCH BASIN DETAIL 'A'
N.T.S.
STA. 5+98, 12+12, 18+93 & 25+37

- CONSTRUCTION NOTES**
- 1 GRADE EARTHEN SWALE TO DRAIN PER TYPICAL SECTION ON SHEET 4.
 - 3 CONSTRUCT 4" THICK CONCRETE IN MEDIAN NOSE.
 - 4 INSTALL 15" DIA. STORM DRAIN. SEE STORM DRAIN PROFILE ABOVE. PIPE MATERIAL OPTIONS:
1. ASBESTOS CEMENT PIPE, D-2000
2. CORRUGATED POLYETHYLENE PIPE
3. POLY VINYL CHLORIDE, SCHEDULE 40
4. REINFORCED CONCRETE PIPE, 2000D
 - 10 CONSTRUCT 4" THICK CONCRETE SWALED APRON. SEE DETAIL "A" ABOVE. COLOR OF CONCRETE SURFACE SHALL BE SOMBRERO BUFF, C-25.
 - 11 CONSTRUCT 24" WIDE INLET OPENING.
 - 12 INSTALL R7 & R10 (RT.) TRAFFIC CONTROL SIGNS PER STANDARD DRAWING 666.
 - 14 CONST. 10LF OF 12" SCH. 40 PVC. FOR FUTURE UPSTREAM EXTENSION OF PVC DRAINAGE SYSTEM. C.B. STA. 25+37 ONLY. PLUG THE UPSTREAM END OF PIPE.
 - 15 CONSTRUCT STAMPED CONCRETE IN MEDIAN ISLAND. COLOR SHALL BE SOMBRERO BUFF, C-25. USE RUNNING BOND, COBBLE STONE PATTERN.
 - 16 CONSTRUCT DROP INLET PER DETAIL "C" AS SHOWN ON THIS PLAN.



FB : LL31/104
ELEV. : 1029.593
BM : F6-G, PK NAIL & TAG IN TOP OF CONC. VAULT ON THE WEST SIDE OF WASHINGTON ST., 30' NLY. OF THE CL. OF OVERLOOK PARKWAY PRODUCED.

CURVE DATA				
Station	Δ	R	L	T
1	172° 24' 19"	2.5'	7.52'	37.66'
2	158° 11' 55"	4'	11.04'	20.77'



ENGINEER IN RESPONSIBLE CHARGE
Ronald C. Mueller
RONALD C. MUELLER
R.C.E. No. 29510 expires 3/31/55
DATE 6/15/93

DESIGNED BY *OUT* DRAWN BY *RAM* CHECKED BY *APM*

CITY OF RIVERSIDE, CALIFORNIA
PUBLIC WORKS DEPARTMENT
APPROVED BY *[Signature]* DATE *6/15/93*
DEPUTY P.W. DIRECTOR
PRINCIPAL ENGINEER
CHIEF P.W. INSPECTOR
TRAFFIC ENGINEER
SURVEYOR
STREET SERVICES
PARKS DEPARTMENT

OVERLOOK PARKWAY
MEDIAN-PHASE II
BETWEEN WASHINGTON AND OROZCO
HORIZ. SCALE: 1" = 40' VERT. SCALE: 1" = 4'
ACC. NO. 430-541500-440223-20089
R-3293
SHEET 5 OF 5
FILE NO.

INDEXED 9-1-93 LH