

BENCH MARK ELEV. = 832.06
 TOP OF CURB @ STA. 0+00.00
 PER PLAN R-259
 (STA. 8+70.00 PER THIS SURVEY)

TYPICAL SECTION (NTS)

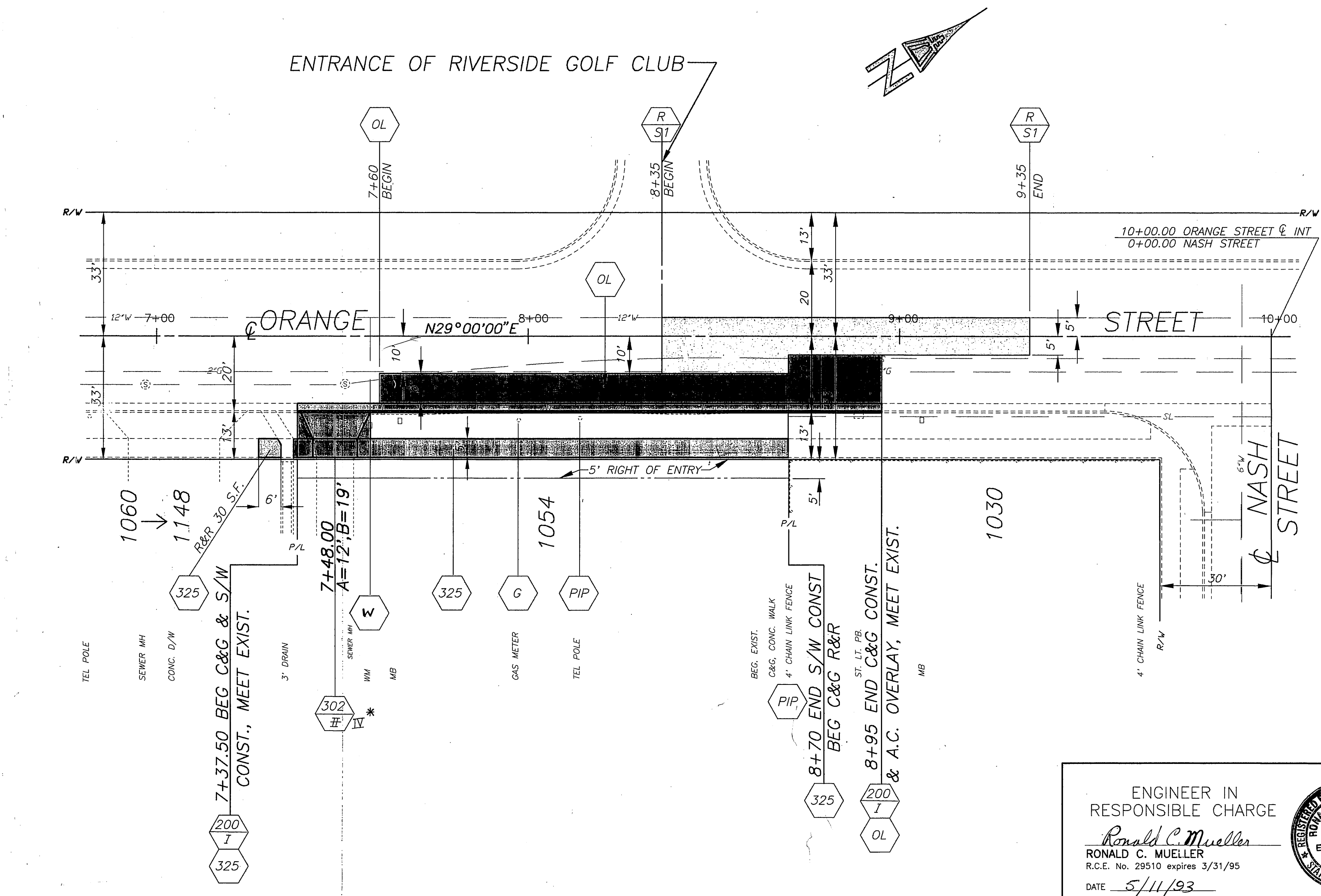
GENERAL CONSTRUCTION NOTES:

1. EXISTING UTILITIES SHOWN ON THIS PLAN ARE PLOTTED FROM UTILITY RECORDS. THE CONTRACTOR IS REQUIRED TO TAKE DUE PRECAUTIONARY MEASURES TO LOCATE AND PROTECT ALL UTILITIES WHETHER OR NOT SHOWN ON THIS PLAN.
2. RIGHT OF ENTRY HAS BEEN OBTAINED FOR WORK SHOWN OUTSIDE OF CITY RIGHT OF WAY.
3. CONFLICTING UTILITIES SHOWN WITHIN CONSTRUCTION AREA WILL BE RELOCATED PRIOR TO CONSTRUCTION.
4. ALL PERMANENT PAVEMENT DELINEATION WILL BE PERFORMED BY CITY FORCES.

SPECIFIC CONSTRUCTION NOTES:

- NUMBERS ABOVE 100 IN A HEXAGON ON THE PLAN REFER TO THE RESPECTIVE STANDARD DRAWING AND SHALL BE CONSTRUCTED ACCORDINGLY, UNLESS MODIFICATIONS ARE NOTED ON THE PLAN. ANY NUMBER SHOWN BELOW THE STANDARD DRAWING NUMBER INDICATES THE SPECIFIC ALTERNATE TO BE CONSTRUCTED.
- G- TO BE RELOCATED BY SOUTHERN CALIFORNIA GAS COMPANY.
- OL CONSTRUCT VARIABLE THICKNESS AC. OVERLAY (0.03' TO 0.2' OVER EXIST. AC).
- PIP PROTECT IN PLACE.
- W WATER METER TO BE LOWERED BY THE PU WATER DIVISION PRIOR TO CONSTRUCTION.
- R SI REMOVE AND REPLACE EXISTING A.C. WITH 6" MIN THICKNESS OF A.C.

IMPORTANT NOTICE
 Section 4216/4217 of the Government Code requires a Dig Alert Identification Number to be issued before a "Permit to Excavate" will be valid. For your Dig Alert I.D. Number call Underground Service Alert
TOLL FREE 1-800-422-4133
 Two working days before you dig.



ENGINEER IN RESPONSIBLE CHARGE
 Ronald C. Mueller
 R.C.E. No. 29510 expires 3/31/95
 DATE 5/11/93

MARK	REVISIONS	APPR.	DATE

CITY OF RIVERSIDE, CALIFORNIA
 DEPARTMENT OF PUBLIC WORKS

APPROVED BY: [Signature] DATE: 6/8/93
 DEPUTY P.W. DIRECTOR
 PRINCIPAL ENGINEER
 CHIEF P.W. INSPECTOR
 TRAFFIC DIVISION
 SURVIVOR
 STREET SERVICES

ORANGE STREET
 E'ly Side From 130' S.
 To 265' S. Of Nash St.

HORIZ. SCALE: 1" = 20'
 VERT. SCALE: 1" = 4'

ACCT. NO. 230-541500-44023-30209
R-3298
 SHEET 1 OF 1
 FILE NO.

INDEXED 1-24-95 4-11