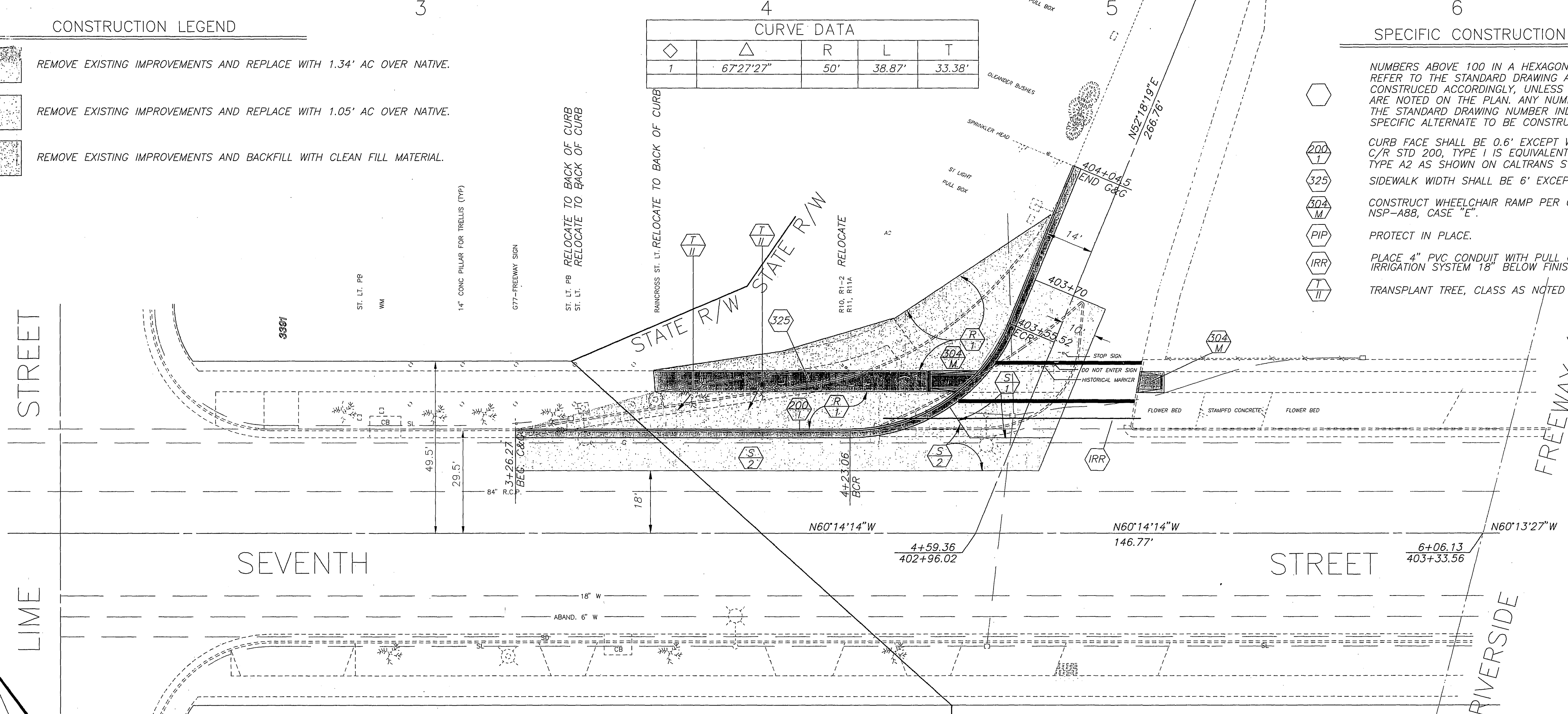


CURVE DATA				
Station	Curve	R	L	T
4+21.06	1	50'	38.87'	33.38'

- CONSTRUCTION LEGEND**
- REMOVE EXISTING IMPROVEMENTS AND REPLACE WITH 1.34' AC OVER NATIVE.
 - REMOVE EXISTING IMPROVEMENTS AND REPLACE WITH 1.05' AC OVER NATIVE.
 - REMOVE EXISTING IMPROVEMENTS AND BACKFILL WITH CLEAN FILL MATERIAL.

- SPECIFIC CONSTRUCTION NOTES**
- NUMBERS ABOVE 100 IN A HEXAGON ON THE PLAN REFER TO THE STANDARD DRAWING AND SHALL BE CONSTRUCTED ACCORDINGLY. UNLESS MODIFICATIONS ARE NOTED ON THE PLAN. ANY NUMBER SHOWN BELOW THE STANDARD DRAWING NUMBER INDICATES THE SPECIFIC ALTERNATE TO BE CONSTRUCTED.
 - CURB FACE SHALL BE 0.6' EXCEPT WHERE SHOWN. C/R STD 200, TYPE 1 IS EQUIVALENT TO CALTRANS STD TYPE A2 AS SHOWN ON CALTRANS STD DWG A87.
 - SIDEWALK WIDTH SHALL BE 6' EXCEPT WHERE SHOWN.
 - CONSTRUCT WHEELCHAIR RAMP PER CALTRANS STD DWG NSP-A88, CASE "E".
 - PROTECT IN PLACE.
 - PLACE 4" PVC CONDUIT WITH PULL CORD FOR FUTURE IRRIGATION SYSTEM 18" BELOW FINISHED SURFACE.
 - TRANSPLANT TREE, CLASS AS NOTED IN LOWER HALF.

- GENERAL CONSTRUCTION NOTES**
- EXISTING UTILITIES SHOWN ON THE PLAN ARE PLOTTED FROM UTILITY RECORDS. THE CONTRACTOR IS REQUIRED TO TAKE DUE PRECAUTIONARY MEASURES TO LOCATE AND PROTECT ALL UTILITIES WHETHER OR NOT SHOWN ON THIS PLAN.
 - PRIME CONTRACTORS BIDDING THIS JOB SHALL HAVE A CLASS "A" LICENSE.
 - ALL ELEVATIONS SHOWN ON THE PLANS SHALL BE STAKED IN THE FIELD.
 - CONSTRUCTION SHALL BE IN ACCORDANCE WITH THE CITY OF RIVERSIDE STANDARD DRAWINGS AND STANDARD SPECIFICATIONS FOR PUBLIC WORKS CONSTRUCTION, 1991 EDITION, INCLUDING 1992 SUPPLEMENT.
 - CONFLICTING UTILITIES IN THE CONSTRUCTION AREA SHALL BE RELOCATED OR ABANDONED. THE CONTRACTOR IS REQUIRED TO TAKE DUE PRECAUTIONARY MEASURES TO LOCATE AND PROTECT ALL UTILITIES WHETHER SHOWN ON THIS PLAN OR NOT.
 - SEE C/R TRAFFIC PLAN X-143 FOR TRAFFIC SIGNAL FACILITY REVISIONS.
 - SEE PLAN X-143 FOR DISPOSITION OF SIGNS.
 - AN ENCROACHMENT PERMIT IS REQUIRED BEFORE ANY WORK MAY BEGIN IN OR NEAR THE STATE RIGHT OF WAY.
 - ALL WORK WITHIN THE STATE RIGHT OF WAY SHALL CONFORM TO THE LATEST STATE STANDARD PLANS AND SPECIFICATIONS OR AS DIRECTED BY THE STATE'S REPRESENTATIVE (STANDARDS OTHER THAN STATE MUST BE PREAPPROVED AND JUSTIFIED).
 - NO EQUIPMENT OR MATERIALS MAY BE STORED ON THE STATE RIGHT OF WAY.
 - CLOSURE OR OBSTRUCTION OF FREEWAY RAMP OR FREEWAY LANES SHALL ONLY BE ALLOWED ACCORDING TO THE CONDITIONS OF THE CALTRANS ENCROACHMENT PERMIT AND/OR AS ALLOWED BY THE STATE'S REPRESENTATIVE.
 - THE CONTRACTOR SHALL BE RESPONSIBLE FOR ENSURING THAT ANY STATE DRAINAGE FACILITY WHICH IS CONNECTED TO OR DIRECTLY AFFECTED BY THE CONTRACTOR'S OPERATION SHALL BE CLEAN AND OPERATIONAL PRIOR TO FINAL ACCEPTANCE OF THE PERMIT WORK BY THE STATE.
 - WHERE SURVEY MONUMENTS EXIST, SUCH MONUMENTS SHALL BE PROTECTED OR SHALL BE REFERENCED AND RESET PURSUANT TO BUSINESS AND PROFESSIONS CODE, SECTIONS 8700 TO 8805 (LAND SURVEYOR'S ACT).
 - THE EXACT LOCATION OF ALL SIGNS SHALL BE DETERMINED IN THE FIELD BY THE STATE'S REPRESENTATIVE AND/OR THE CITY'S REPRESENTATIVE.
 - ALL SIGNING, STRIPING, AND PAVEMENT MARKINGS SHALL BE IN CONFORMANCE WITH THE CURRENT EDITION OF THE TRAFFIC MANUAL, PUBLISHED BY THE STATE OF CALIFORNIA, DEPARTMENT OF TRANSPORTATION, AND THE SPECIAL PROVISIONS. ALL PAVEMENT MARKINGS SHALL BE THERMOPLASTIC UNLESS OTHERWISE NOTED ON THE PLANS.
 - ALL CONFLICTING STRIPING NOT SHOWN ON THE PLANS SHALL BE REMOVED BY SANDBLASTING.
 - ALL CONFLICTING SIGNS SHALL BE EITHER REMOVED OR RELOCATED BY THE CONTRACTOR. RELOCATABLE SIGNS SHALL BE INSTALLED AS SPECIFIED ON THE PLANS OR AS DETERMINED IN THE FIELD BY THE CITY AND STATE REPRESENTATIVES.



BENCHMARK
CHIS. "□", S.E. CORNER OF CONCRETE STREET LIGHT BASE AT BACK OF S'LY CURB ON SEVENTH STREET, 195' E'LY OF LIME STREET.
ELEVATION 862.59'



ENGINEER IN RESPONSIBLE CHARGE
Duane Greenwood
DUANE GREENWOOD
R.C.E. No. 43365 expires 6/30/97
DATE 11/10/93

MARK	REVISIONS	APPR.	DATE

**CITY OF RIVERSIDE, CALIFORNIA
PUBLIC WORKS DEPARTMENT**

APPROVED BY	BY	DATE	APPROVED BY
DEPUTY P.W. DIRECTOR	<i>[Signature]</i>	11/10/93	<i>[Signature]</i>
PRINCIPAL ENGINEER	<i>[Signature]</i>	11/10/93	<i>[Signature]</i>
CHIEF P.W. INSPECTOR	<i>[Signature]</i>	11/10/93	<i>[Signature]</i>
TRAFFIC DIVISION	<i>[Signature]</i>	11/10/93	<i>[Signature]</i>
SURVEYOR	<i>[Signature]</i>	11/10/93	<i>[Signature]</i>
STREET SERVICES	<i>[Signature]</i>	11/10/93	<i>[Signature]</i>
PARKS DEPARTMENT	<i>[Signature]</i>	11/10/93	<i>[Signature]</i>

**SEVENTH STREET AND
91 FREEWAY WEST
BOUND OFF-RAMP**

AS BUILT 11/10/93
ACCT. No. 476-528160-440120-12033
R-3336
SHEET 1 OF 1
FILE NO.

INDEXED 2-9-94 LHM