

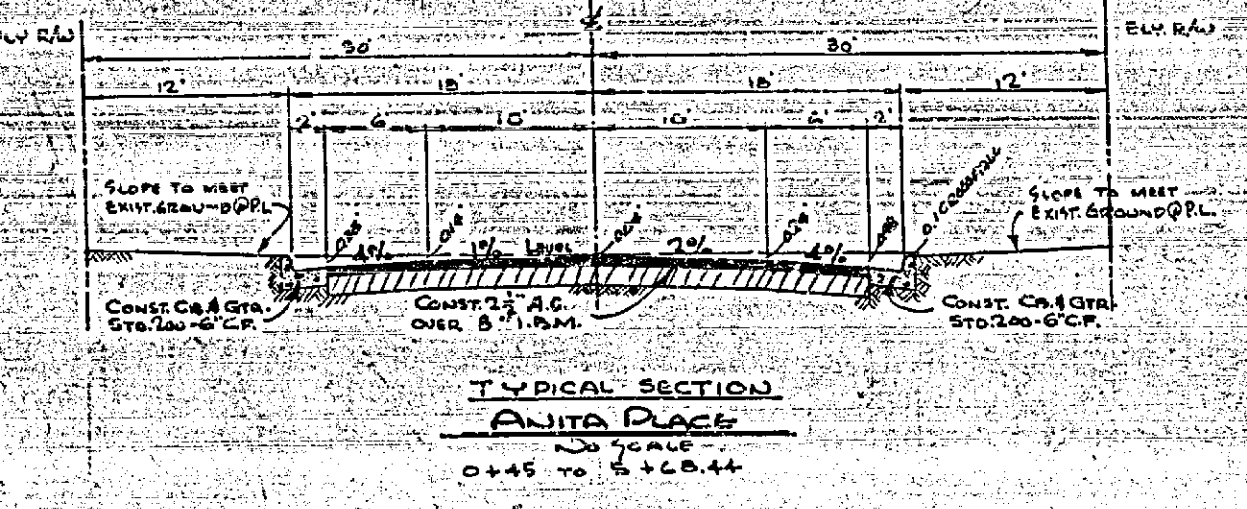
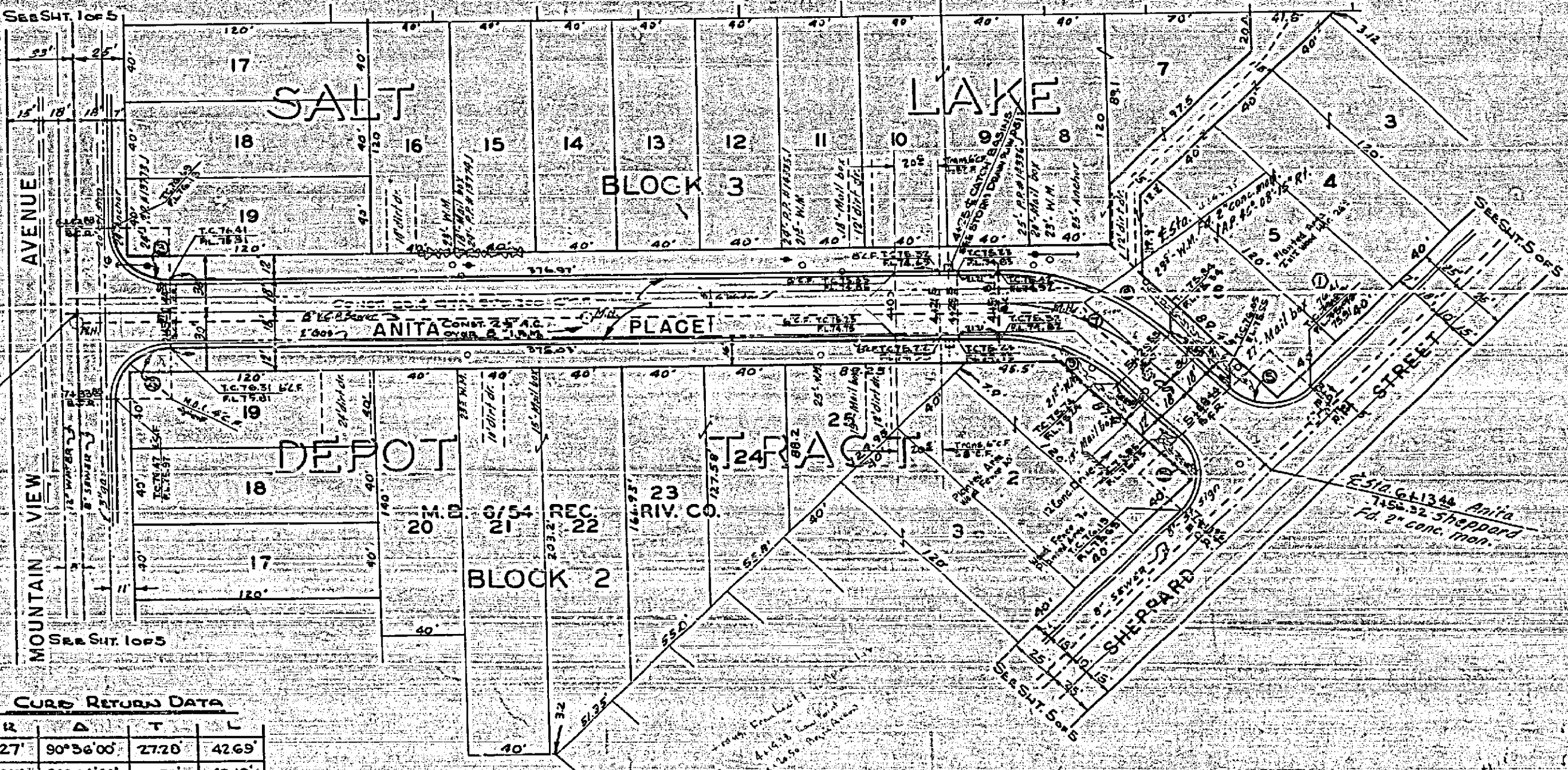
**PROFILE**

DATE	
DRAWN BY	
CHECKED BY	
APPROVED BY	
RECOMMENDED BY	
DESIGNED BY	
NO. OF SHEETS	
NO. OF THIS SHEET	
PROJECT NO.	
DATE	

**PLAN**

DATE	
DRAWN BY	
CHECKED BY	
APPROVED BY	
RECOMMENDED BY	
DESIGNED BY	
NO. OF SHEETS	
NO. OF THIS SHEET	
PROJECT NO.	
DATE	

BENCH MARK:  
 1. 10' W. OF CURB MOUNTAIN VIEW  
 2. EAST OF ANITA PLACE ELEV. 772.04  
 (F.B. 11/17 - COR. RIV. P.D. 605/22)



**CURB RETURN DATA**

NO.	W	Δ	T	L
4	27'	90°36'00"	27.20	42.69'
5	27'	88°24'00"	26.72	42.15'
6	27'	90°00'00"	27.00	42.41'
7	100'	45°07'00"	41.54	78.74'
8	115'	45°07'00"	49.02	92.92'
9	82'	45°07'00"	34.06	64.57'

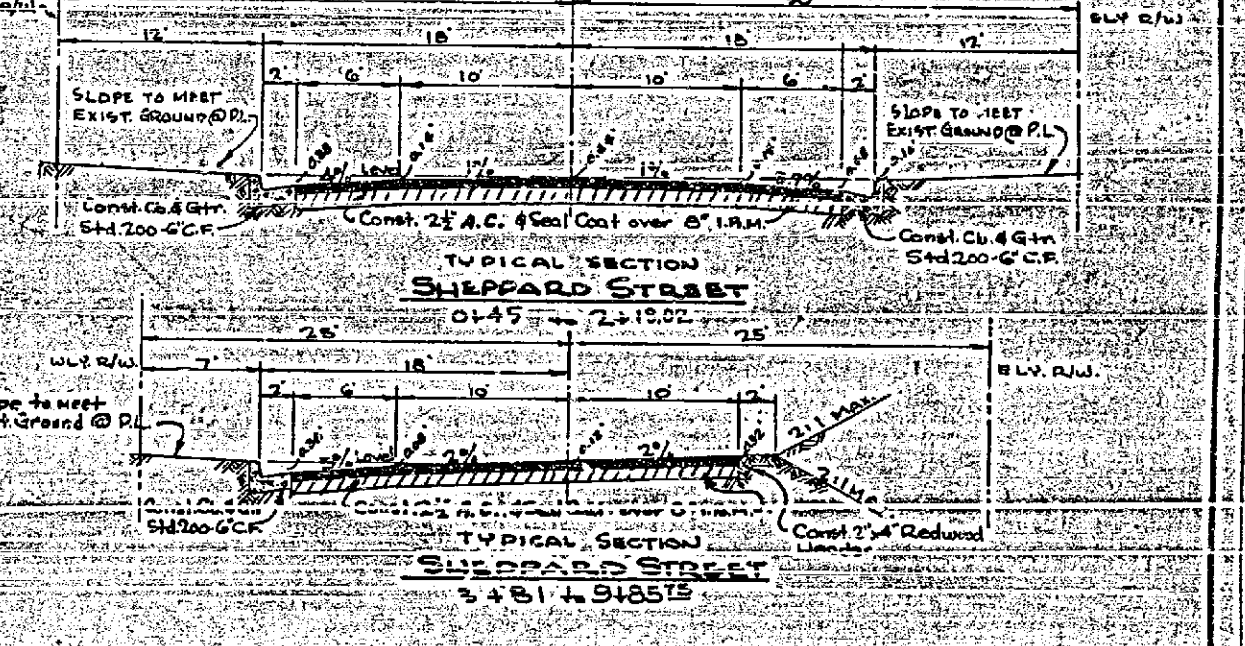
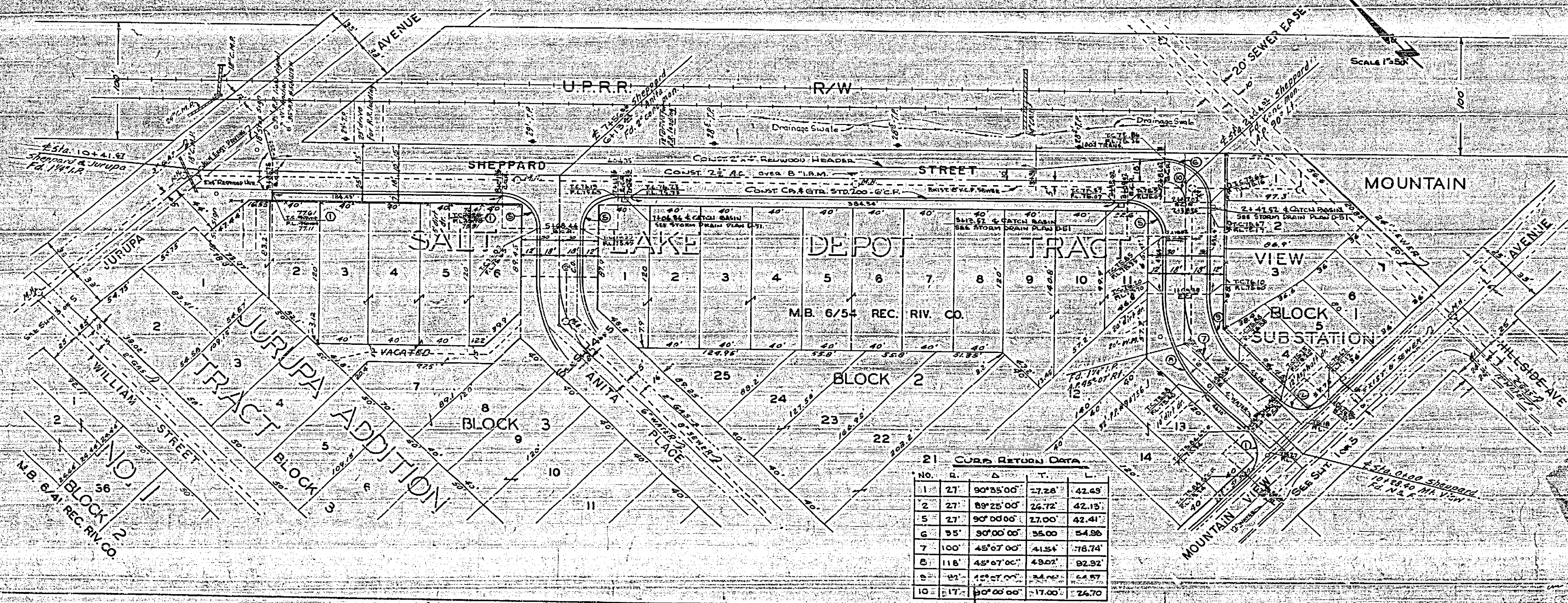
<b>REVISIONS</b>		<b>CITY OF RIVERSIDE, CALIFORNIA</b> <b>DEPARTMENT OF PUBLIC WORKS</b> <b>ANITA PLACE</b> <b>ANITA-SHEPPARD</b> <b>IMPROVEMENT DISTRICT</b>
MARK	DATE	
①	8-23-21	REVISED GRADES FOR CURB AND GUTTER
DESIGNED BY	CHECKED BY	APPROVED BY
DRAWN BY		
RECOMMENDED BY	ASSISTANT CITY ENGINEER	DIRECTOR OF PUBLIC WORKS
		<b>R-334</b>
		DATE: 8/10/21
		SHEET 4 OF 5



PROFILE SHEET  
 SHEPPARD STREET  
 ANITA-SHEPPARD IMPROVEMENT DISTRICT  
 RIVERSIDE, CALIFORNIA

SCALE HORIZ. 1" = 50'  
 VERT. 1" = 5'

BENCH MARK  
 24.41 ST. 4 CORNER OF S. 10145 ON So. Side  
 Mt. View 85' W. of C.P. Track L&N 175.81



21 CURB RETURN DATA

NO.	B.	A.	T.	L.
1	27	90°35'00"	17.26'	42.65'
2	27	89°25'00"	24.72'	42.15'
5	27	90°00'00"	27.00'	42.41'
6	95	90°00'00"	35.00'	54.96'
7	100	45°07'00"	41.54'	76.74'
8	118	45°07'00"	49.02'	82.92'
9	95	45°07'00"	34.92'	64.87'
10	17	90°00'00"	17.00'	24.70'

REVISIONS

MARK	DATE	DESCRIPTION
1	3-23-42	RAISED GRADES FROM 0.75% TO 0.44% FOR 1/2 CURB CUT
2	3-23-42	ADJUSTED GRADES TO MATCH PROFILES

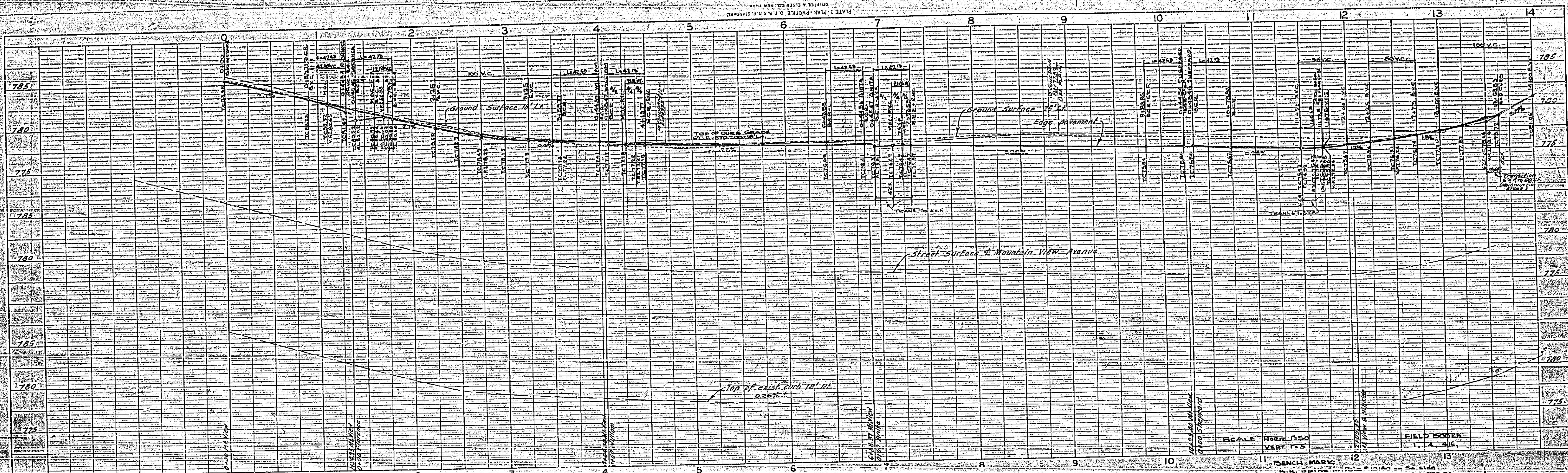
CITY OF RIVERSIDE - CALIFORNIA  
 DEPARTMENT OF PUBLIC WORKS  
**SHEPPARD STREET**  
 ANITA-SHEPPARD IMPROVEMENT DISTRICT

DESIGNED BY: [Signature]  
 CHECKED BY: [Signature]  
 APPROVED BY: [Signature]  
 DATE: [Date]

R-334  
 SHEET 5 OF 5

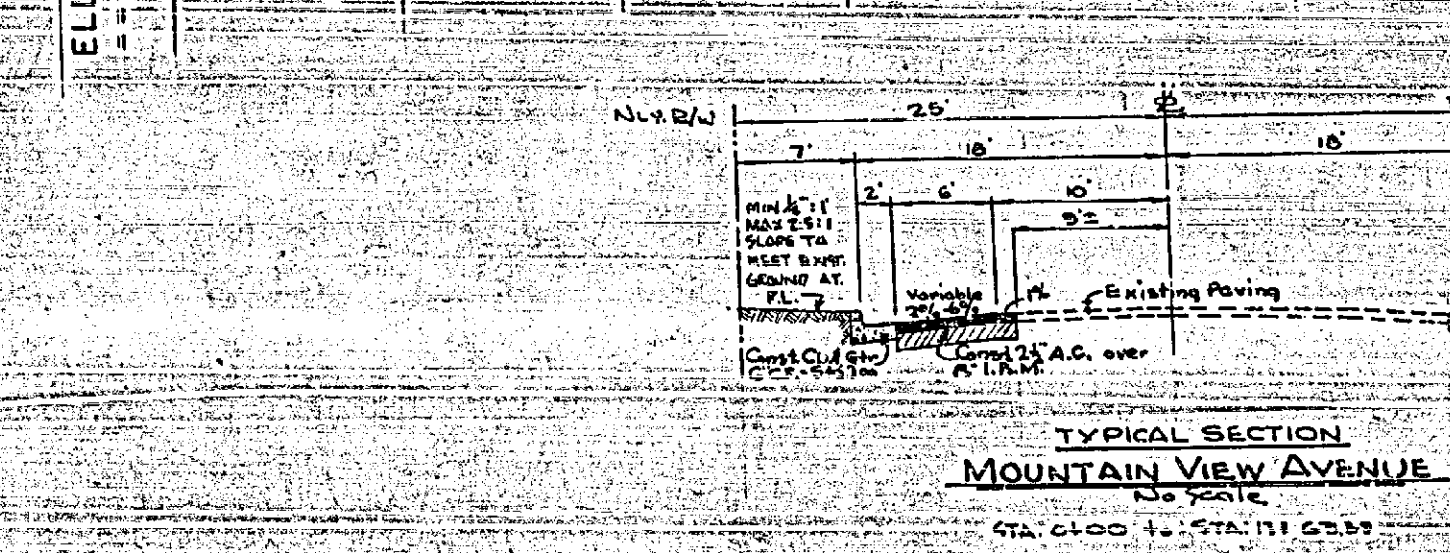
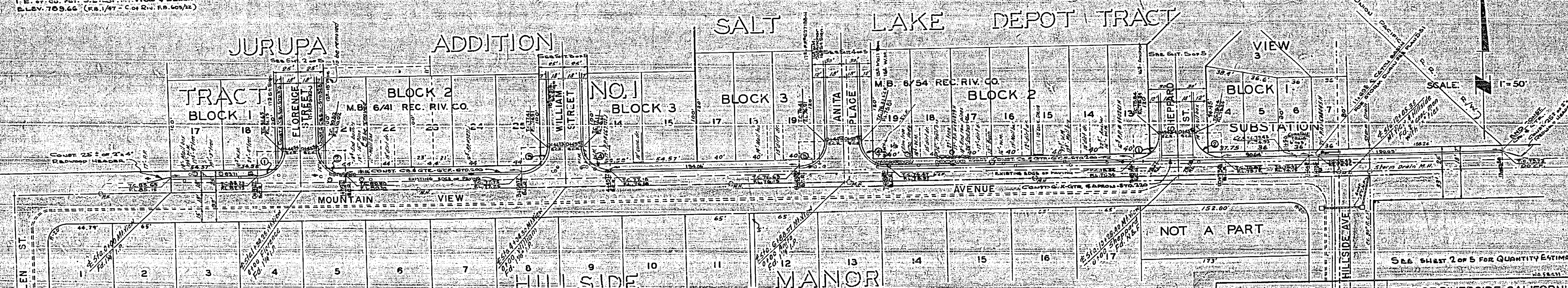
PLAN SHEET  
 SHEPPARD STREET  
 ANITA-SHEPPARD IMPROVEMENT DISTRICT  
 RIVERSIDE, CALIFORNIA

PLATE 1 - PLAN, PROFILE  
 ENGINEER & ARCHT. CO. NEW YORK  
 110 N. 4TH ST. NEW YORK, N.Y.



BENCH MARK:  
 P.K. nail in S.C. curb at Mt. View  
 I.E. of curb, S.E. Cor. Mt. View & Ellen  
 ELEV. 769.66 (F.S. 1/47 - Cor. Riv. R.S. 60/12)

BENCH MARK:  
 N.K. spike in S.C. curb on S. side  
 Mt. View 65 W. of U.P. tracks ELEV. 770.81  
 (F.S. 1/47 - Cor. Riv. R.S. 60/12)



CURB RETURN DATA

NO.	CAD.	A	T	L
2.	27	89°25'	27.28'	42.63'
1.	27	89°25'	26.72'	42.15'
4.	27	90°30'	27.28'	42.65'
3.	27	89°24'	26.72'	42.15'

GENERAL NOTES

- IT IS THE RESPONSIBILITY OF THE CONTRACTOR TO CLEAR THE RIGHT OF WAY IN ACCORDANCE WITH THE PROVISIONS OF LAW AS IT APPLIES TO EACH UTILITY INCLUDING TELEPHONE LINES AND CABLES AND AT THE SAME TIME TO THE CITY ENGINEER.
- CONSTRUCTION SHALL BE IN ACCORDANCE WITH THE CITY ENGINEER'S DEPT. OF PUBLIC WORKS SPECIFICATIONS AND STANDARDS.
- THE CONTRACTOR SHALL BE RESPONSIBLE FOR OBTAINING ALL NECESSARY PERMITS FROM THE CITY ENGINEER AND THE PUBLIC UTILITIES COMPANIES.
- CONTRACTOR SHALL CONTACT PROPERTY OWNERS REGARDING REMOVAL OF EXISTING DRIVEWAYS WHICH MAY BE NECESSARY TO ASSURE SMOOTH DRIVEWAY ENTRANCES.
- ALL EXISTING UTILITIES SHALL BE PROTECTED AND MAINTAINED THROUGHOUT THE PROJECT. ANY DAMAGE TO UTILITIES SHALL BE REPAIRED BY THE CONTRACTOR AT HIS EXPENSE.
- ALL MATERIALS SHALL BE SUBJECT TO INSPECTION AND APPROVAL BY THE CITY ENGINEER.
- ALL MATERIALS SHALL BE SUBJECT TO INSPECTION AND APPROVAL BY THE CITY ENGINEER.
- ALL MATERIALS SHALL BE SUBJECT TO INSPECTION AND APPROVAL BY THE CITY ENGINEER.

REVISIONS

MARK	DATE	DESCRIPTION

CITY OF RIVERSIDE CALIFORNIA  
 DEPARTMENT OF PUBLIC WORKS

**MOUNTAIN VIEW AVENUE**

ANITA SHEPPARD  
 IMPROVEMENT DISTRICT

DESIGNED BY: [Signature]  
 DRAWN BY: [Signature]  
 CHECKED BY: [Signature]  
 APPROVED BY: [Signature]  
 DIRECTOR OF PUBLIC WORKS

RECOMMENDED BY: [Signature]  
 ASSISTANT CITY ENGINEER

DATE: [Date]  
 SHEET 1 OF 5

R-334

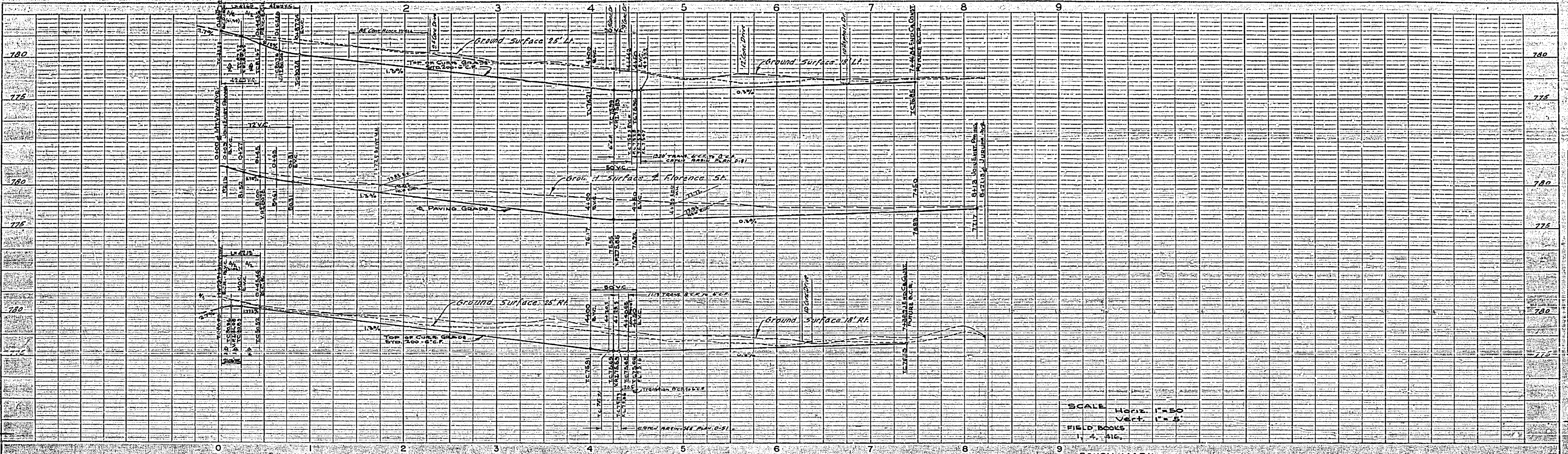
PROFILE

NO.	DATE	BY	DESCRIPTION

PLAN

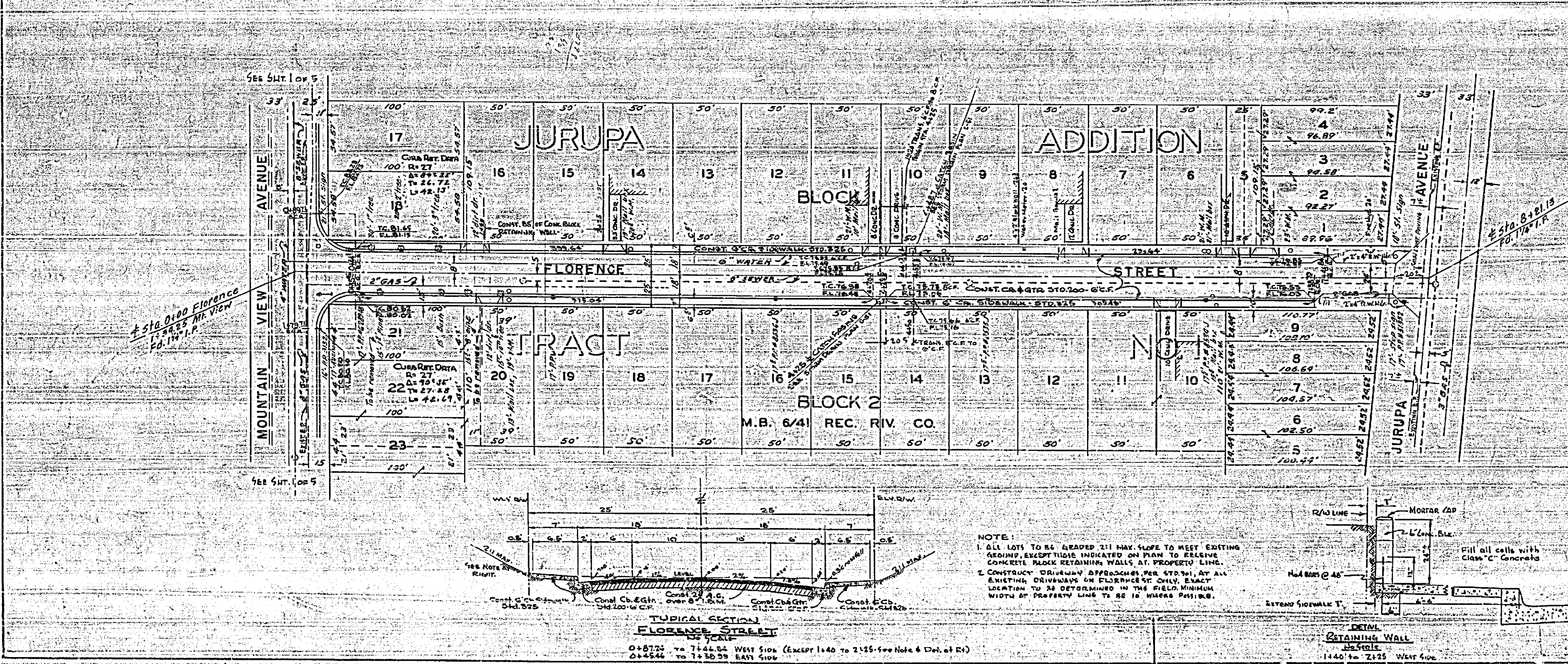
NO.	DATE	BY	DESCRIPTION

**MISSING**



SCALE Horiz. 1"=50'  
 Vert. 1"=5'  
 FIELD BOOKS  
 1, 4, 11C

BENCH MARK  
 P.M. nail in 2nd curb cut view  
 5 E. of Florence St. ELEV. 782.06  
 (P.M. 1/27 - Col. Riv. P.M. 600/22)



QUANTITY ESTIMATE

CONCRETE CURB AND GUTTER - 6" TO 20"	6155 LF.
CONCRETE GUTTER AND OPENING - 18" TO 24"	554 LF.
2" x 4" REDWOOD HEADER	1190 LF.
2" ASPHALTIC CONCRETE 1" SEAL COAT	107150 SF.
CONCRETE SIDE WALKWAY - 18" TO 24"	1814 SF.
CONCRETE SIDE WALKWAY - 24" TO 30"	1540 SF.
PAVING REMOVAL & CONCRETE CURB (MOUNTAIN VIEW ST.)	1370 SF.
LOWER EXISTING MANHOLES (18" TO 24")	0 EA.
LOWER EXISTING CLEANOUT	2 EA.
TREE REMOVAL (CONCRETE CURB)	8 EA.
REPLACE CONCRETE TOPS	80 LF.
CONCRETE BLOCK RETAINING WALL	2600 CU.
EXCAVATION	1100 CU.
CONCRETE APPROACH (3" TO 6" TO 18" (SEE PLAN FOR QUANTITIES))	16 LF.
(BY C.M.P.)	

REVISIONS			CITY OF RIVERSIDE, CALIFORNIA DEPARTMENT OF PUBLIC WORKS
MARK	DATE	DESCRIPTION	
			<b>FLORENCE STREET</b> ANITA-SHEPPARD IMPROVEMENT DISTRICT

DESIGNED BY: H.L.M.	CHECKED BY: W.P.S.	APPROVED BY: [Signature]	R-334
DRAWN BY: W.P.S.	REVIEWED BY: [Signature]	DIRECTOR OF PUBLIC WORKS	
RECOMMENDED BY: [Signature]	ASSISTANT CITY ENGINEER	DATE: Dec 1, 1941	SHEET 2 OF 5

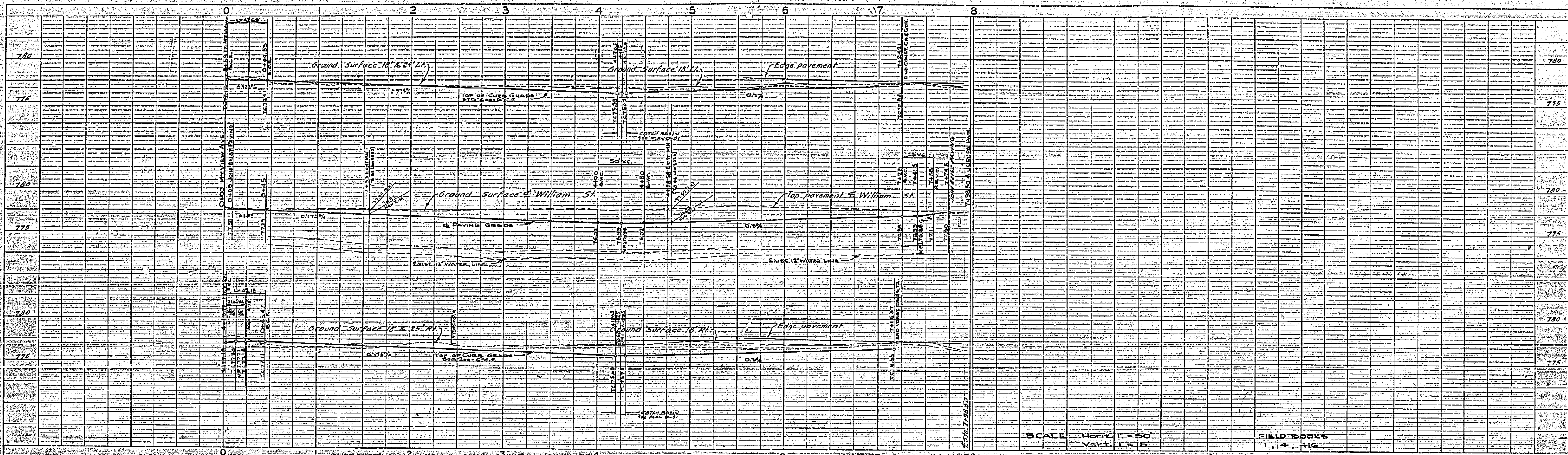
NOTE:  
 1. ALL LOTS TO BE GRADED 2" MAX. SLOPE TO MEET EXISTING GROUND, EXCEPT THOSE INDICATED ON PLAN TO RECEIVE CONCRETE PAVED RETAINING WALLS AT PROPERTY LINE.  
 2. CONCRETE CURB SHALL BE APPROX. 6" HIGH, BY AN EXISTING DRIVEWAY OR ELEVATION ONLY. EXACT LOCATION TO BE DETERMINED IN THE FIELD THROUGH WIDTH OF PROPERTY LINE TO BE 10' UNLESS POSSIBLE.

PROFILE ELEVATIONS

EXISTING GROUND SURFACE	770
PAVING GRADE	775
CONCRETE CURB TOP	780
CONCRETE GUTTER TOP	775
CONCRETE SIDE WALKWAY TOP	780
CONCRETE CURB BOTTOM	775
CONCRETE GUTTER BOTTOM	770
CONCRETE SIDE WALKWAY BOTTOM	775

PLAN ELEVATIONS

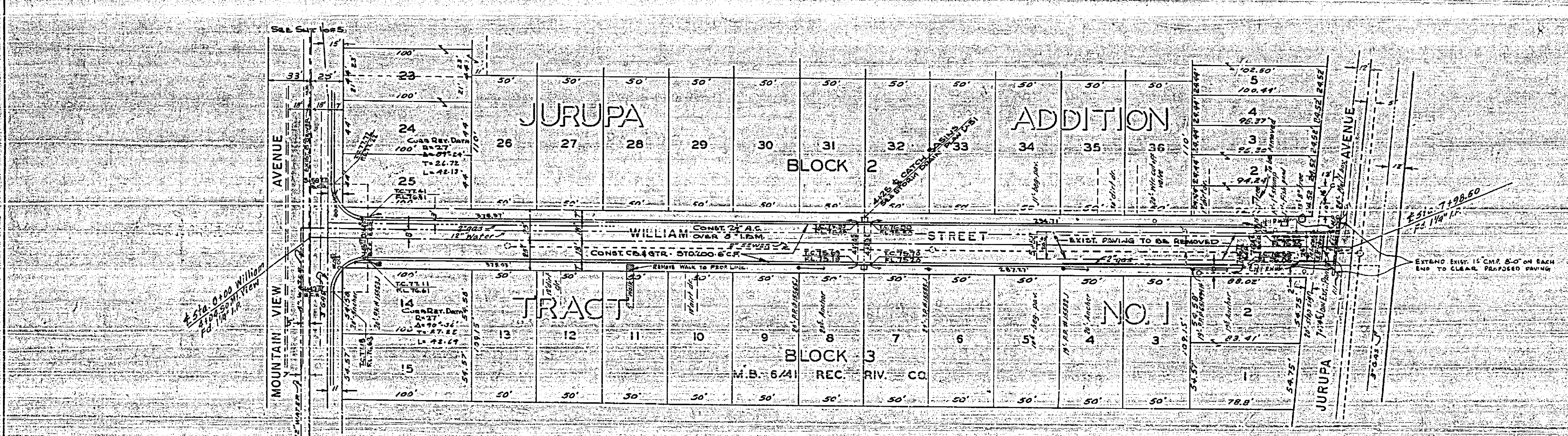
EXISTING GROUND SURFACE	770
PAVING GRADE	775
CONCRETE CURB TOP	780
CONCRETE GUTTER TOP	775
CONCRETE SIDE WALKWAY TOP	780
CONCRETE CURB BOTTOM	775
CONCRETE GUTTER BOTTOM	770
CONCRETE SIDE WALKWAY BOTTOM	775



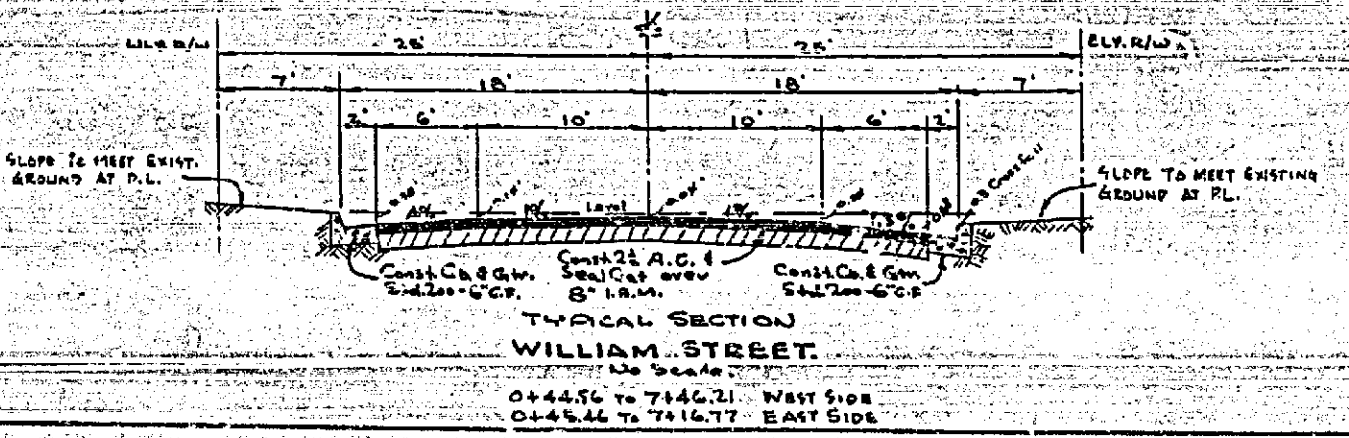
SCALE HORIZ. 1" = 50'  
 VERT. 1" = 5'

BENCH MARK:  
 P.K. Nail in S.E. curb Mt. View Ave.  
 5' E. of C.C. of William St. elev. 777.74  
 (P.M. 1/41 - Cont. R.O. P. 605/12)

PROFILE	
DATE	1941
BY	W. J. M. [Signature]
CHECKED BY	[Signature]
APPROVED BY	[Signature]



SCALE: 1" = 50'



REVISIONS			CITY OF RIVERSIDE CALIFORNIA DEPARTMENT OF PUBLIC WORKS
MARK	DATE	DESCRIPTION	
			WILLIAM STREET
			ANITA-SHEPPARD IMPROVEMENT DISTRICT

DESIGNED BY: <i>W.J.M.</i>	CHECKED BY: <i>[Signature]</i>	APPROVED BY: <i>[Signature]</i>	P-334
DRAWN BY: <i>W.J.M.</i>	RECOMMENDED BY: <i>[Signature]</i>	DIRECTOR OF PUBLIC WORKS	
		DATE: <i>June 1, 1941</i>	SHEET 3 OF 5

PLAN	
DATE	1941
BY	W. J. M. [Signature]
CHECKED BY	[Signature]
APPROVED BY	[Signature]