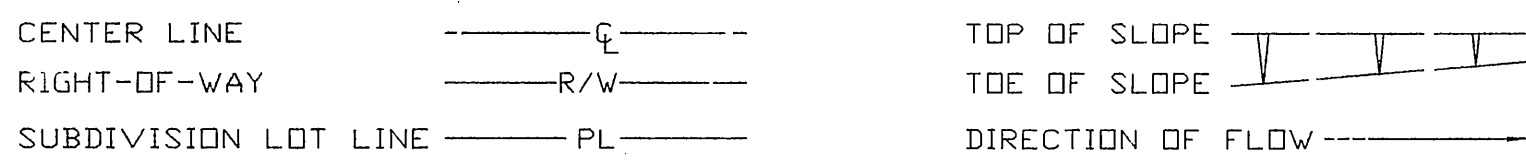


**CONSTRUCTION LEGEND**



- ADJ ADJUST SEWER, STORM DRAIN, ELECTRIC OR WATER MANHOLE OR GATE VALVE TO GRADE. ADJUSTMENT TO GRADE OR RELOCATION OF GAS AND TELEPHONE COMPANY'S FACILITIES WILL BE DONE BY OTHERS.
- D RC 0.10' MIN. DGAC (DENSE GRADED AC) OVER ARSAT (ASPHALT RUBBER STRESS ABSORBING TREATMENT). NOTE: RUBBER CHIP (RC) IS THE SAME AS AND IS USED INTERCHANGEABLY WITH ARSAT.
- ARHM 0.10' MIN. ASPHALT-RUBBER HOT MIX GAP GRADED (ARHM-GG) OVERLAY.
- G1 GRIND EX. AC 0.05' BELOW GUTTER LIP OR OUTER EDGE, "DAY-LIGHTING" IN 5' (TYPE 1 GRINDING) EXCEPT AS SHOWN OTHERWISE ON PLAN AND DESCRIBED IN SPECIAL PROVISIONS.
- R S REMOVE AND REPLACE EX. AC PAVEMENT WITH 0.50' FULL DEPTH DGAC.
- TDL TRAFFIC DETECTOR LOOP INSTALLATIONS
- TDL 0 NUMBER OF DETECTOR LOOPS
- TDL PIP PROTECT TRAFFIC DETECTOR LOOP INSTALLATIONS IN PLACE.
- TDF REMOVE ABANDONED TRAFFIC DETECTOR FRAME AND FOUNDATION.
- R II REMOVE EXISTING TREE. TREE SIZES ARE: CLASS I- 6" TO 18"  
CLASS II- 18" TO 36"  
CLASS III- OVER 36"

**SPECIFIC CONSTRUCTION NOTES**

NUMBERS ABOVE 100 IN A HEXAGON ON THE PLAN REFER TO THE RESPECTIVE STANDARD DRAWING AND SHALL BE CONSTRUCTED ACCORDINGLY, UNLESS MODIFICATIONS ARE NOTED ON THE PLAN OR COVER SHEET. ANY NUMBER SHOWN BELOW THE STANDARD DRAWING NUMBER INDICATES THE SPECIFIC ALTERNATE TO BE CONSTRUCTED.

**GENERAL CONSTRUCTION NOTES**

- 1 CONSTRUCTION SHALL BE IN ACCORDANCE WITH THE CITY OF RIVERSIDE STANDARD DRAWINGS AND STANDARD SPECIFICATIONS FOR PUBLIC WORKS CONSTRUCTION, 1991 EDITION.
- 2 EXISTING UTILITIES SHOWN ON THIS PLAN ARE PLOTTED FROM UTILITY RECORDS. THE CONTRACTOR IS REQUIRED TO TAKE DUE PRECAUTIONARY MEASURES TO LOCATE AND PROTECT ALL UTILITIES WHETHER OR NOT SHOWN ON THIS PLAN. IF THE COVER OF A UTILITY IS KNOWN, IT IS SHOWN IN THE PROFILE. UTILITIES IN THE PROFILE AS SHOWN INDICATES THAT THE COVER IS UNKNOWN, BUT THE UTILITY IS NOT EXPECTED TO CONFLICT WITH THE PROPOSED IMPROVEMENTS.
- 3 ALL ELEVATIONS SHOWN ON THE PLANS SHALL BE STAKED IN THE FIELD.
- 4 PRIME CONTRACTORS BIDDING THIS WORK SHALL HAVE A CLASS A OR C-12 LICENSE.
- 5 THE SEAM BETWEEN PASSES OF THE DGAC OVERLAY SHALL COINCIDE, AS CLOSE AS POSSIBLE, WITH THE LANE LINES.
- 6 AFTER REMOVAL AND PRIOR TO CURB, C&G OR EP REPLACEMENTS, FOR DESIGNATED R&R LENGTHS GREATER THAN 50', THE CONTRACTOR SHALL ALLOW 48 HRS. TO REQUEST SURVEY PLUS AN ADDITIONAL 48 HRS. TO RECEIVE PROPOSED GRADES FOR REPLACEMENT IMPROVEMENTS.
- 7 WHEN ARSAT IS USED, CRACKS IN PAVEMENT 3/8" AND LARGER SHALL BE FILLED WITH A RUBBERIZED ASPHALT MATERIAL PRIOR TO APPLICATION OF THE ARSAT. WHEN ARSAT IS NOT USED, ALL CRACKS SHALL BE FILLED WITH A RUBBERIZED ASPHALT MATERIAL (SEE SPECIAL PROVISIONS).
- 8 MANHOLES AND VALVES WITHIN THE GRINDING OR PVMT. REPLACEMENT LIMITS SHALL NOT BE ADJUSTED TO GRADE; INSTEAD, ENOUGH GRINDING (OR PVMT. REMOVAL BY OTHER MEANS) SHALL BE DONE TO PROVIDE A SMOOTH FINISHED SURFACE TRANSITION, AROUND THE COMPLETE CIRCUMFERENCE OF THE STRUCTURE, AS NOTED PER PLAN. EXCEPTIONS TO THIS ARE WHERE MHS. AND VALVES ARE WITHIN PVMT. REPLACEMENT AREAS BUT ARE TOO CLOSE (3' OR LESS) TO THE ADJACENT PROPOSED AC OVERLAY.
- 9 PULL BOXES FOR SPLICING TRAFFIC LOOP DETECTOR CONDUCTORS AND LEAD-IN CABLE ARE NORMALLY ADJACENT TO DETECTORS, UNLESS OTHERWISE SHOWN ON THE PLAN.
- 10 RESURFACING LIMITS SHOWN AT INTERSECTIONS ARE NOT ABSOLUTE. THE INSPECTOR MAY REQUEST GRINDING AND PAVING INTO SIDE STREETS TO IMPROVE RIDE QUALITY AND OTHER STREET CONDITIONS.
- 11 PLANS DO NOT TYPICALLY INDICATE LOCATIONS OF WATER VALVES OR FIRE HYDRANTS TO SIMPLIFY PLAN PREPARATION EFFORT; HOWEVER, THESE FACILITIES MUST BE LOCATED DURING CONSTRUCTION TO MAKE VALVE BOX ADJUSTMENTS AND BLUE HYDRANT MARKER INSTALLATIONS. THE VALVE BOXES MUST BE "TIED OUT" AS PART OF THE CONTRACTORS WORK.
- 12 THE ARSAT QUANTITY CALCULATION IS BASED ON OMITTING THE USE OF ARSAT ON REMOVAL AND REPLACEMENT AREAS THAT ARE AT LEAST TEN (10) FEET WIDE AND THREE HUNDRED (300) FEET LONG.

# RIVERSIDE CITY OF RIVERSIDE CALIFORNIA

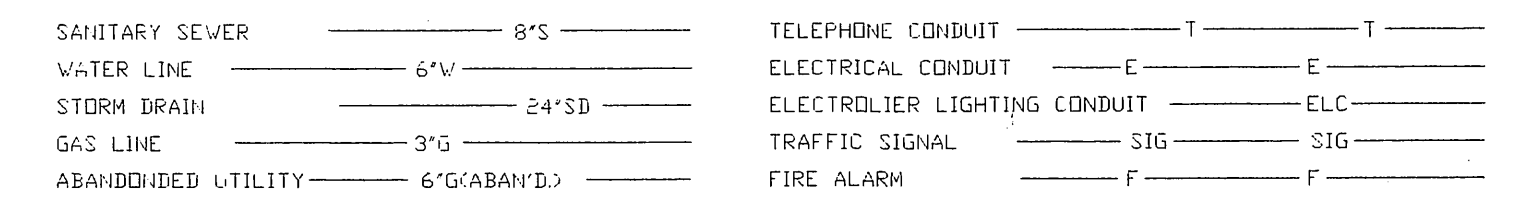
## PUBLIC WORKS DEPARTMENT

### REHABILITATION OF ARTERIAL STREETS 1993-1994 (CITY FUNDED)

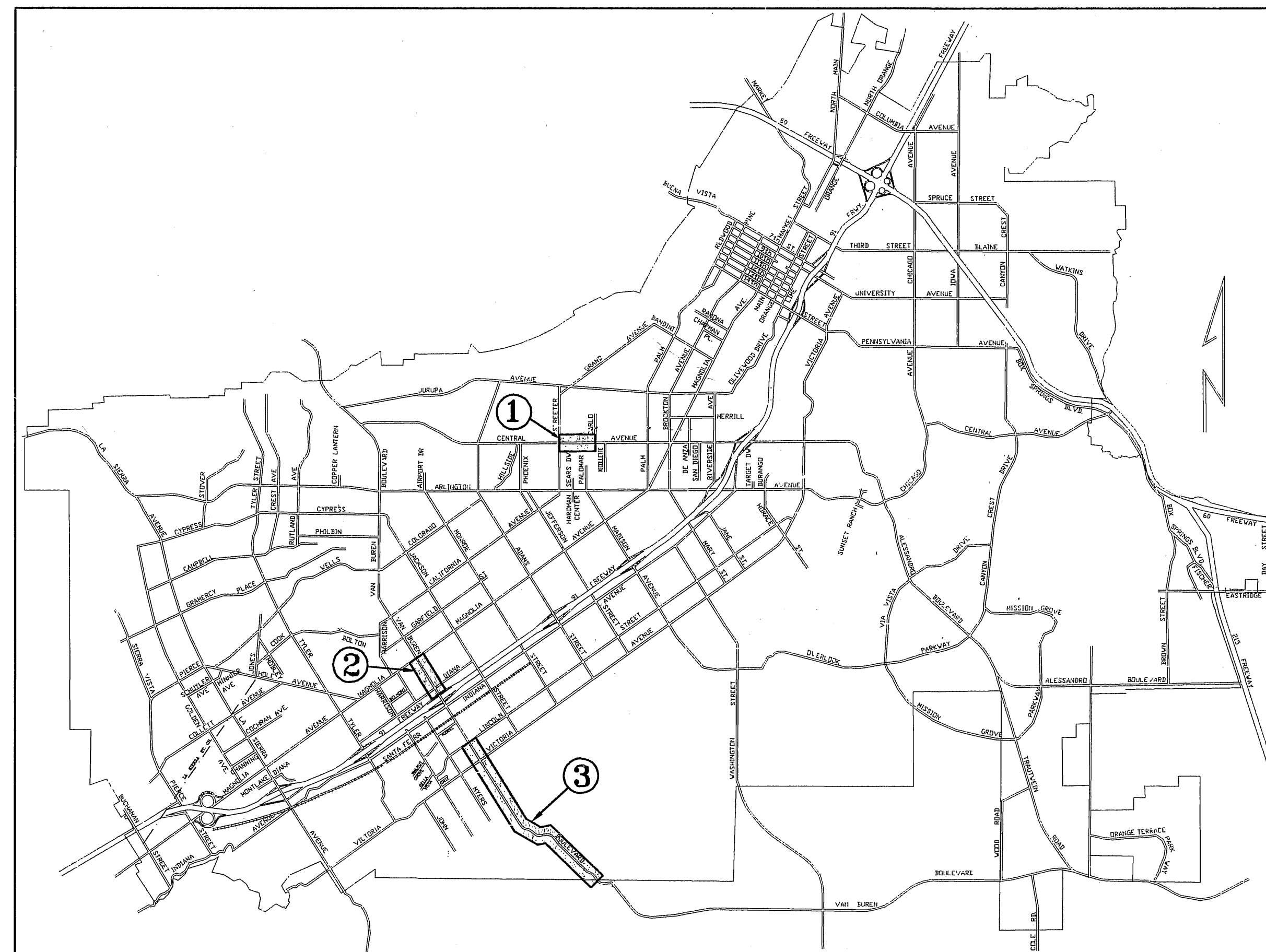
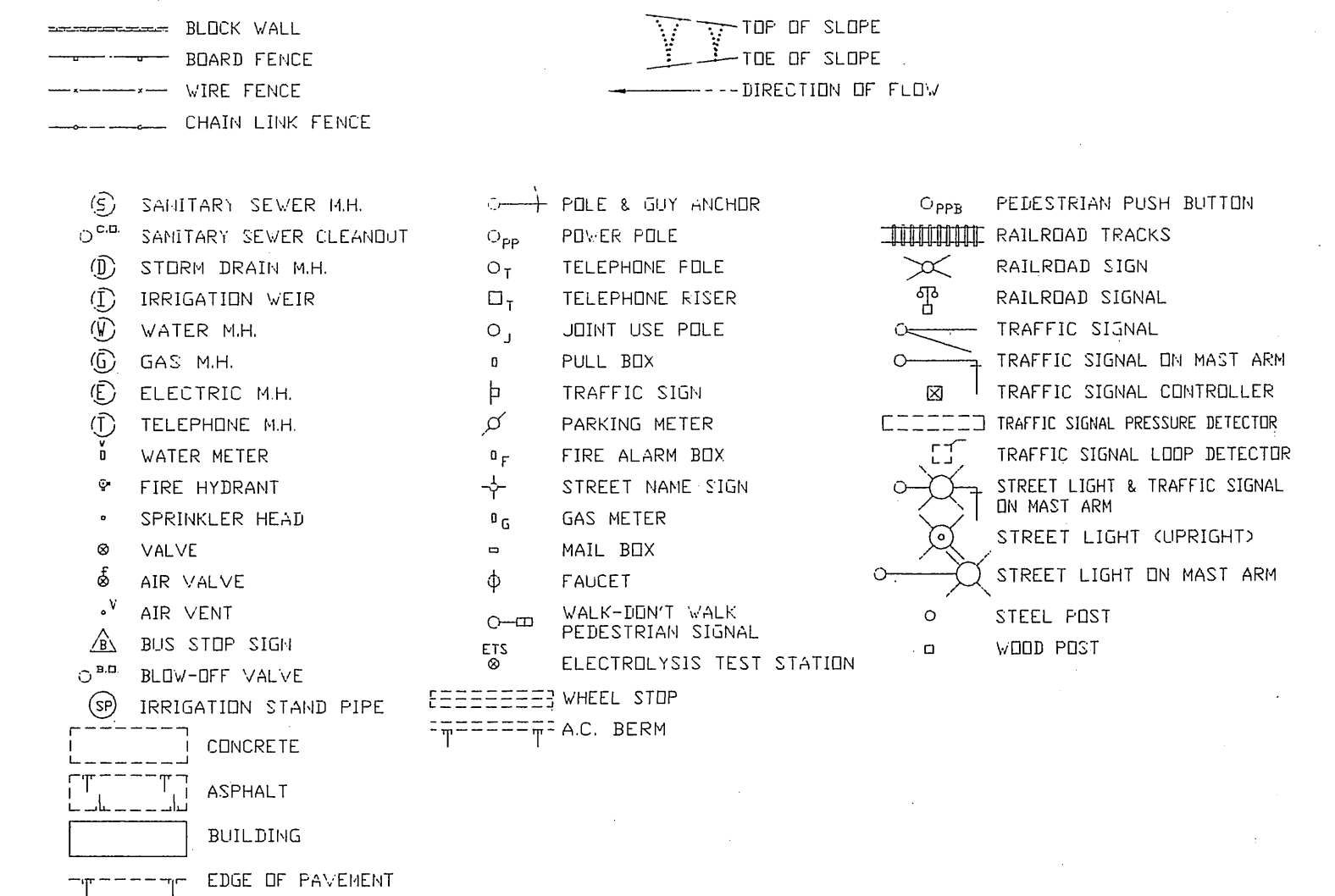
	STREET	LIMITS	TRAFFIC INDEX	LENGTH	SH. NO.
①	CENTRAL AVE.	STREETER TO CARLO	9.0	3,700' - 0.7 MILE	2
②	VAN BUREN BLVD.	91 FREEWAY TO MAGNOLIA	9.0	3,100' - 0.6 MILE	3
③	VAN BUREN BLVD.	LINCOLN TO CITY LIMITS	10.0	11,200' - 2.1 MILES	4 - 7

**EXISTING UNDERGROUND & TOPOGRAPHY LEGEND**

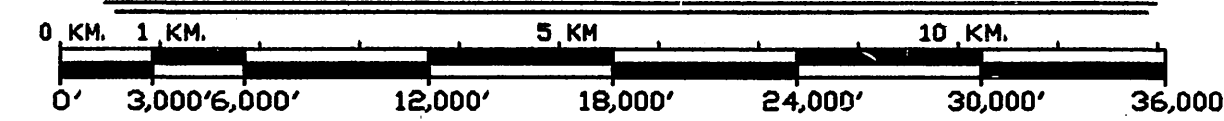
**EXISTING UNDERGROUND UTILITIES**



**EXISTING TOPOGRAPHY**



**PROJECT LOCATION PLAN**

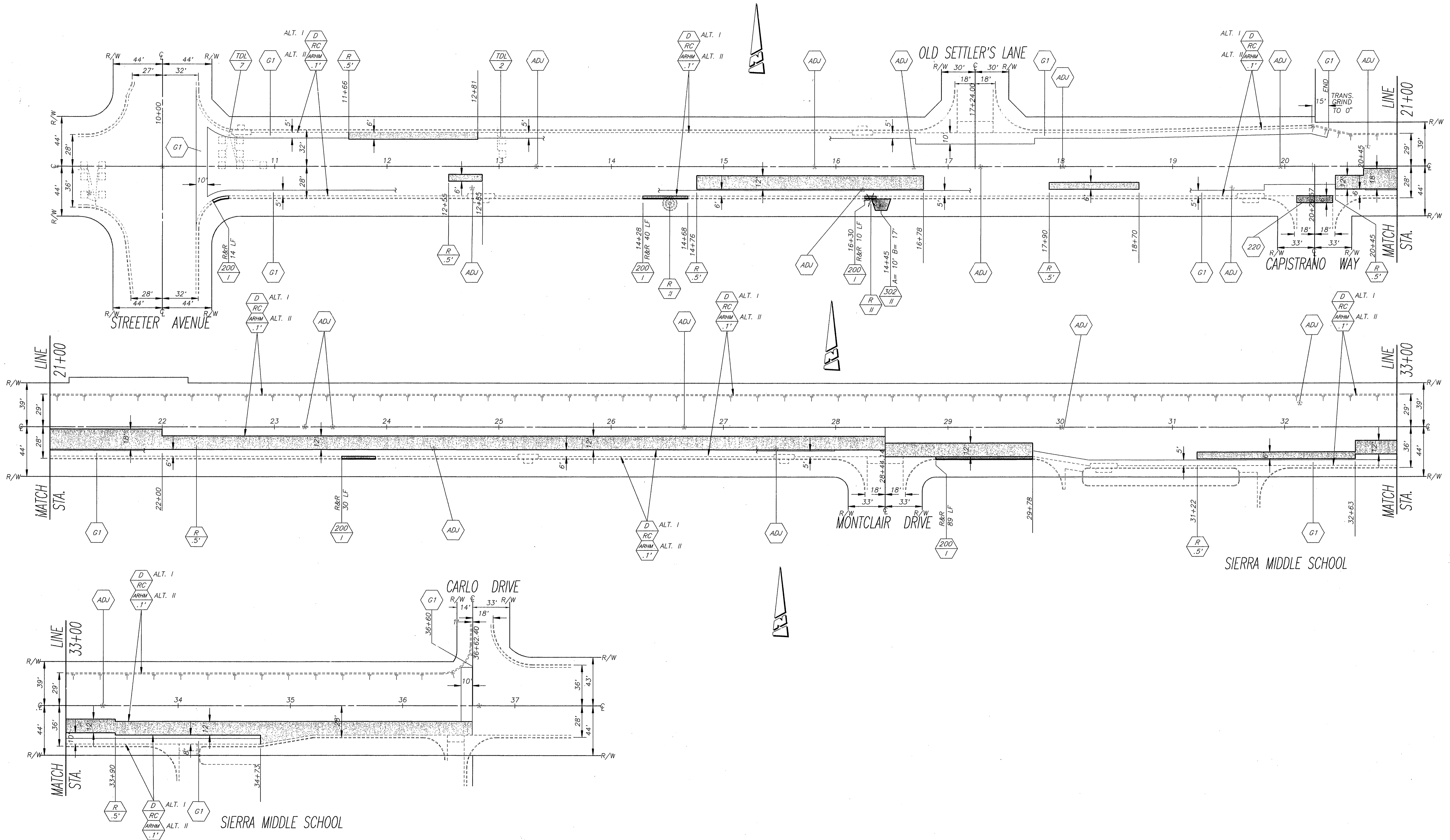


SCALE : 1" = 6,000'

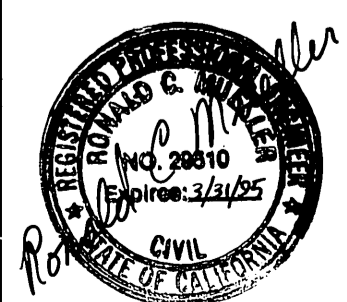
**IMPORTANT NOTICE**  
Section 4216/4217 of the Government Code requires a Dig Alert Identification Number to be issued before a "Permit to Excavate" will be valid. For your Dig Alert I.D. Number call Underground Service Alert TOLL FREE 1-800-422-4133 Two working days before you dig.



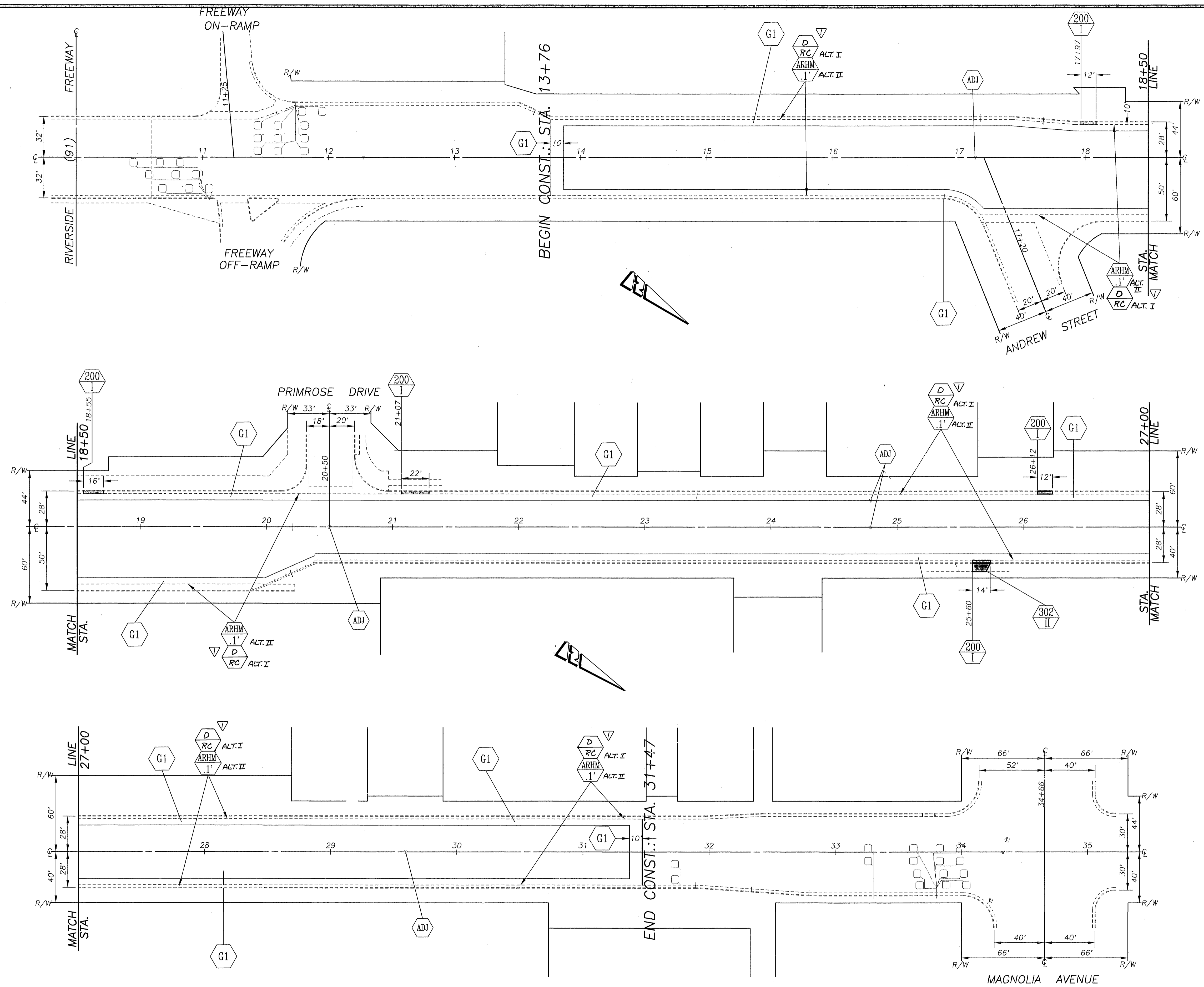
ENGINEER IN RESPONSIBLE CHARGE Ronald C. Mueller RONALD C. MUELLER R.C.E. No. 29510 expires 3/31/95 DATE 5/18/94	DESIGNED BY: RVZ DRAWN BY: RIM CHECKED BY: RCM	CITY OF RIVERSIDE, CALIFORNIA PUBLIC WORKS DEPARTMENT		REHABILITATION OF ARTERIAL STREETS (CITY FUNDED) 93/94	ACCT. NO. 230-541500-440223-30035 R-3351 SHEET 1 OF 7 FILE NO.
		APPROVED BY: [Signature] DEPUTY P.W. DIRECTOR PRINCIPAL ENGINEER CHIEF P.W. INSPECTOR STREET SURVEYS SURVEYOR TRAFFIC DIVISION PARKS DEPARTMENT	DATE: 5/24/94		



QUANTITIES FOR CENTRAL AVENUE			
ITEM	QUANTITY	ITEM	QUANTITY
COLD MILLING, TYPE I (5')	3,020 LF	BLUE FIRE HYDRANT MARKERS	4 EA.
COLD MILLING, TYPE I (10')	402 LF	ALTERNATE I	
EXCAVATION (A.C. & BASE)	399 CY	DENSE GRADE A.C.	1,342 TONS
A.C. REPLACEMENT (PLAN)	808 TONS	ASPHALT RUBBER S.A.T.	14,682 SY
CRACK SEALING	10,640 LF	TACK COAT	734 GALS.
TRAFFIC SIGNAL LOOPS	9 EA.	ALTERNATE II	
ADJUST ELECTRIC VAULT	2 EA.	ASPHALT RUBBER HOT MIX-GG	1,306 TONS
ADJUST SEWER & S.D. M.H. FRAME & COVER TO GRADE	16 EA.	TACK COAT	828 GALS.
ADJUST WATER GATE VALVE COVER TO GRADE	6 EA.	PAVEMENT PREPARATION (0.5' THICK)	
		A.C. REMOVAL (INSPECTION)	236 CY
		A.C. REPLACEMENT (INSPECTION)	478 TONS



CITY OF RIVERSIDE, CALIFORNIA PUBLIC WORKS DEPARTMENT		REHABILITATION OF ARTERIAL STREETS 93-94		ACCT. NO. 230-541500-440223-30035
APPROVED BY DEPUTY P.W. DIRECTOR PRINCIPAL ENGINEER CHIEF P.W. INSPECTOR SUPERVISOR TRAFFIC DIVISION PARKS DEPARTMENT	BY DATE DATE DATE DATE DATE DATE	APPROVED BY PUBLIC WORKS DIRECTOR DATE DATE	CENTRAL AVENUE STREETER TO CARLO	SHEET 2 OF 7
DESIGNED BY: RVZ DRAWN BY: RJM CHECKED BY:				FILE NO.



QUANTITIES FOR VAN BUREN BOULEVARD			
ITEM	QUANTITY	ITEM	QUANTITY
COLD MILLING, TYPE I (5')	1,741 LF	TRAFFIC SIGNAL LOOPS	0 EA.
COLD MILLING, TYPE I (10')	112 LF	BLUE FIRE HYDRANT MARKERS	3 EA.
TACK COAT	561 GALS.	R&R C&G STD. 200- TYPE I	76 LF
		CONST. D/W APPR. STD. 302	150 SF
ADJUST ELECTRIC VAULT FRAME & COVER TO GRADE	3 EA.	<b>ALTERNATE I</b>	
ADJUST WATER M.H.	1 EA.	DENSE GRADED A.C.	309 TONS
ADJUST SEWER & S.D. M.H. FRAME & COVER TO GRADE	4 EA.	ASPHALT RUBBER S.A.T.	11,225 S.Y.
ADJUST WATER GATE VALVE COVER TO GRADE	7 EA.	<b>ALTERNATE II</b>	
		ASPHALT RUBBER HOT MIX-GG	885 TONS

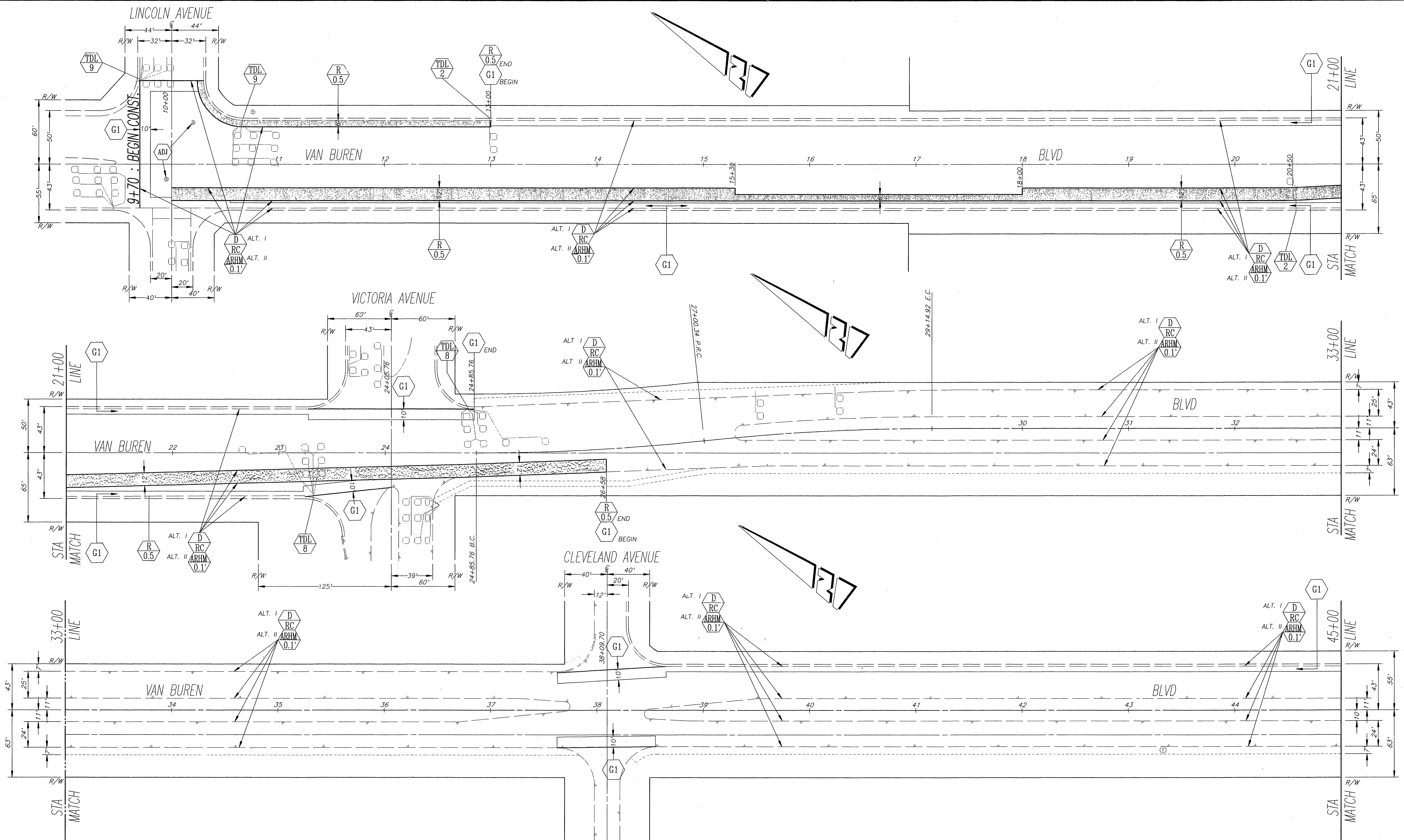


DESIGNED BY	RVZ	DRAWN BY	RJM	CHECKED BY	RCM
DATE		DATE		DATE	

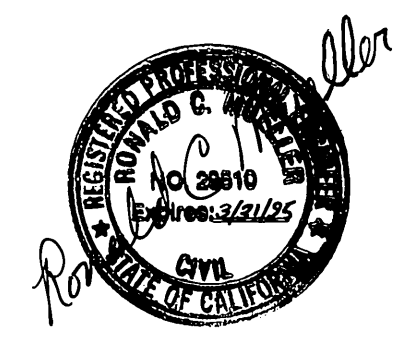
CITY OF RIVERSIDE, CALIFORNIA PUBLIC WORKS DEPARTMENT	
APPROVED BY	DATE
DEPUTY P.W. DIRECTOR	5/24/94
PRINCIPAL ENGINEER	5/24/94
CHIEF P.W. INSPECTOR	5/24/94
STREET SERVICES SUPERVISOR	5/24/94
TRAFFIC DIVISION	5/24/94

REHABILITATION OF ARTERIAL STREETS 93-94	
VAN BUREN BOULEVARD	
91 FREEWAY TO MAGNOLIA	
HORIZ. SCALE: 1" = 40'	

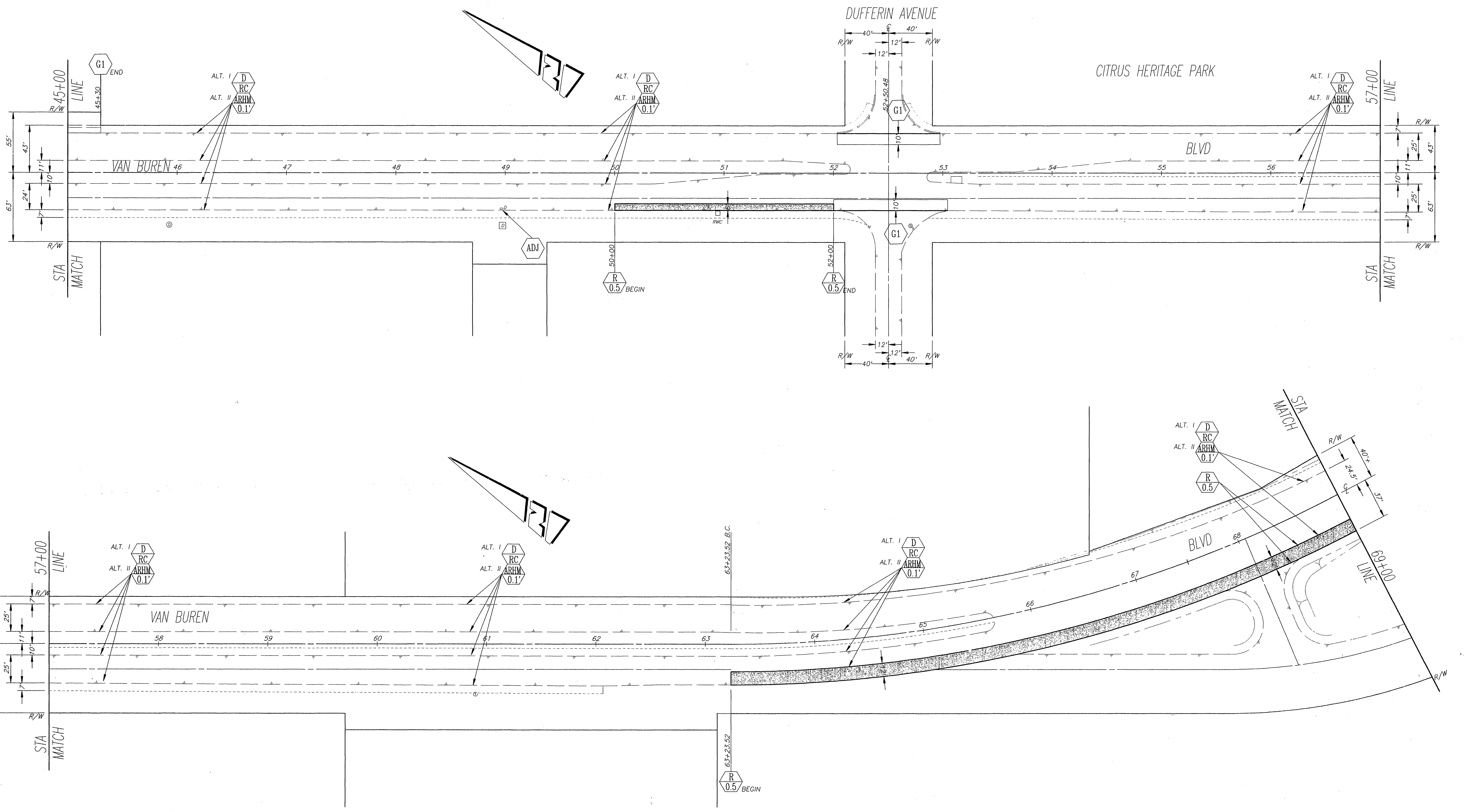
ACCT. NO. 230-541500-440223-30035	R-3351
SHEET 3 OF 7	
FILE NO.	



QUANTITIES FOR VAN BUREN BOULEVARD			
ITEM	QUANTITY	ITEM	QUANTITY
COLD MILLING, TYPE I (5')	3,333 LF	TRAFFIC SIGNAL LOOPS	47 EA.
COLD MILLING, TYPE I (10')	1,011 LF	BLUE FIRE HYDRANT MARKERS	4 EA.
EXCAVATION (A.C. & BASE)	1,382 CY	ALTERNATE I	
A.C. REPLACEMENT (PLAN)	2,800 TONS	DENSE GRADE A.C.	5,959 TONS
CRACK SEALING	44,960 LF	ASPHALT RUBBER S.A.T.	66,479 SY
TACK COAT	3,324 GALS.		
ADJUST WATER M.H.	6 EA.	ALTERNATE II	
ADJUST SEWER & S.D. M.H.	3 EA.	ASPHALT RUBBER HOT MIX-GG	5,800 TONS
FRAME & COVER TO GRADE		PAVEMENT PREPARATION (0.5" THICK)	
ADJUST WATER GATE VALVE	45 EA.	A.C. REMOVAL (INSPECTION)	1,088 CY
COVER TO GRADE		A.C. REPLACEMENT (INSPECTION)	2,203 TONS

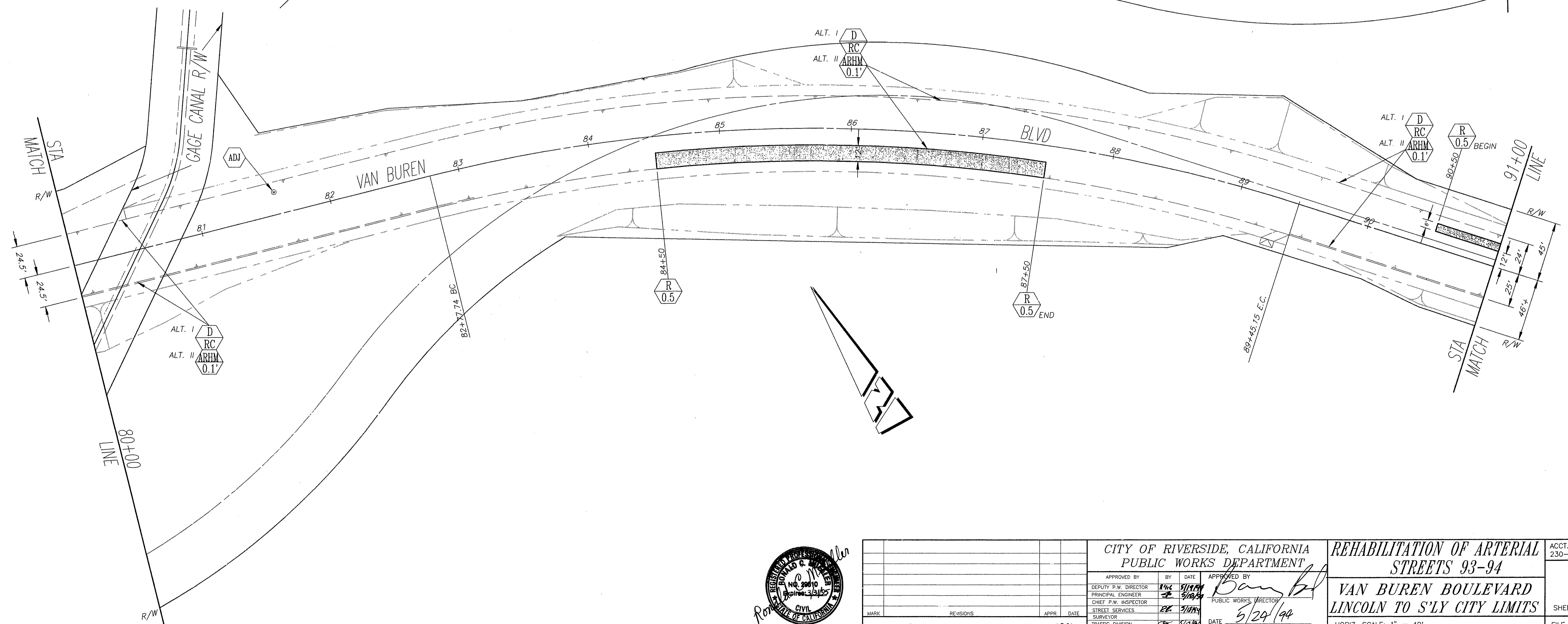
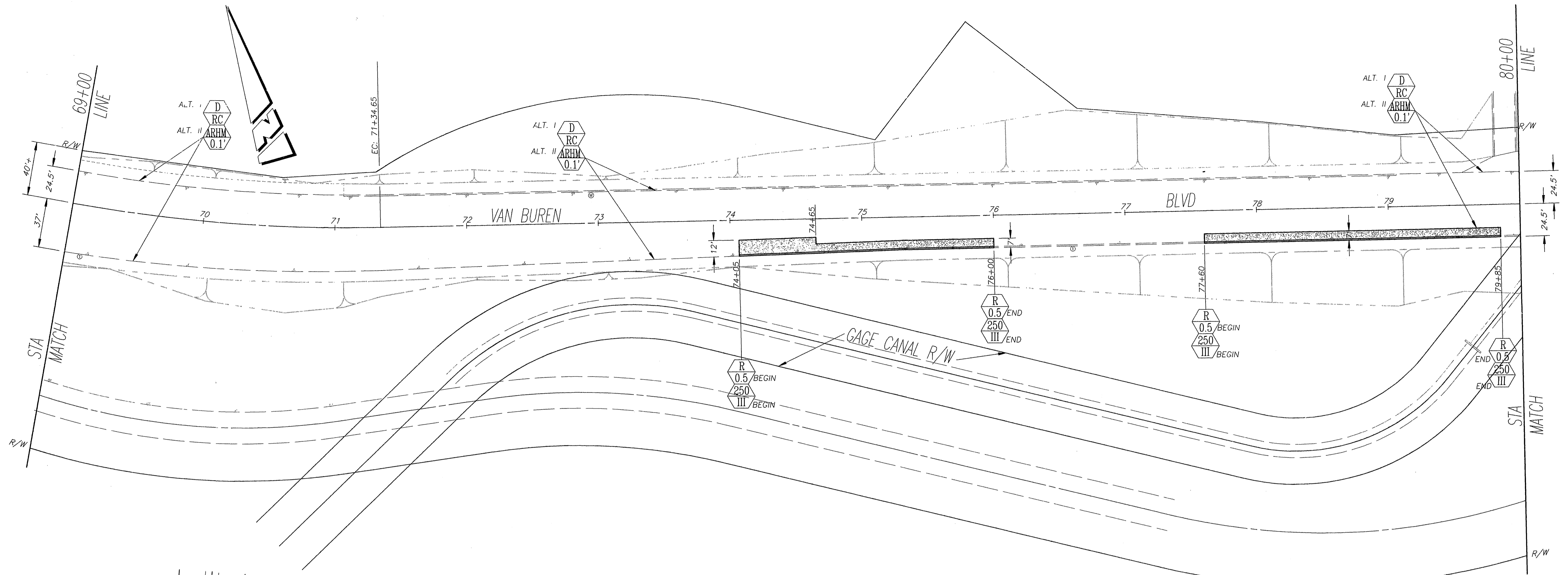


CITY OF RIVERSIDE, CALIFORNIA PUBLIC WORKS DEPARTMENT		REHABILITATION OF ARTERIAL STREETS 93-94		ACCT. NO. 230-541500-440223-30035
APPROVED BY: <i>[Signature]</i> DEPUTY P.W. DIRECTOR		APPROVED BY: <i>[Signature]</i> PUBLIC WORKS DIRECTOR		R-3351
DESIGNED BY: <i>[Signature]</i> DRAWN BY: CURT. JAM CHECKED BY: <i>[Signature]</i>		DATE: 5/24/94		SHEET 4 OF 7
MARK: _____ REVISIONS: _____ APPR. DATE: _____		TRAFFIC DIVISION		FILE NO.

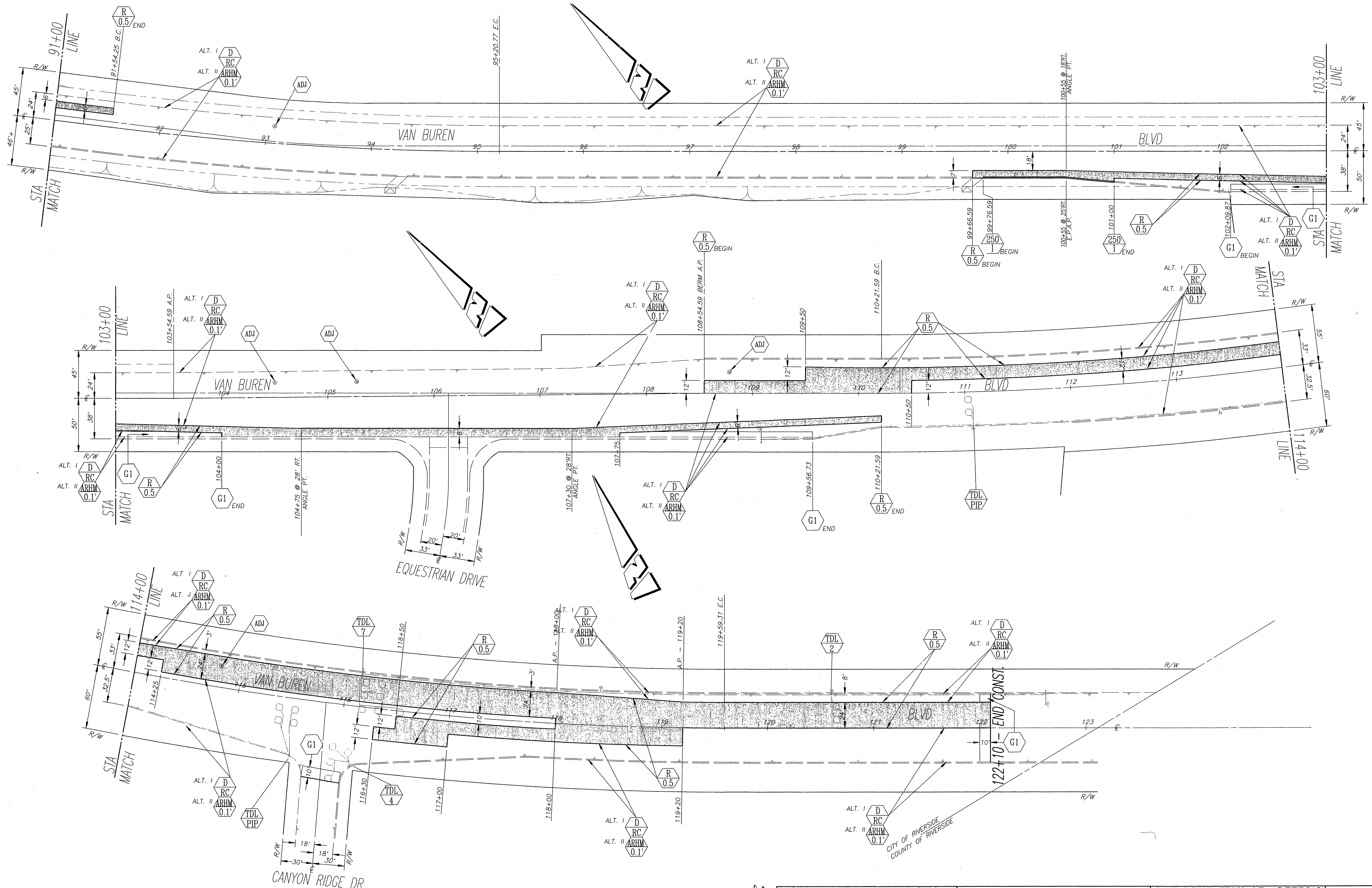


CITY OF RIVERSIDE, CALIFORNIA PUBLIC WORKS DEPARTMENT		REHABILITATION OF ARTERIAL STREETS 93-94		ACCT. NO. 230-541500-440223-30035
APPROVED BY DEPUTY P.W. DIRECTOR PRINCIPAL ENGINEER CHIEF P.W. INSPECTOR SUPERVISOR	BY [Signature] [Signature] [Signature]	DATE 5/24/94 5/24/94 5/24/94	APPROVED BY PUBLIC WORKS DIRECTOR [Signature]	R-3351 SHEET 5 OF 7
DESIGNED BY RJV	DRAWN BY CURT, RUM	CHECKED BY acm	DATE 5/24/94	FILE NO.

INDEXED 11-14-94 64 PC 3728-S



CITY OF RIVERSIDE, CALIFORNIA PUBLIC WORKS DEPARTMENT				REHABILITATION OF ARTERIAL STREETS 93-94		ACCT. NO. 230-541500-440223-30035	
APPROVED BY: <i>[Signature]</i> DEPUTY P.W. DIRECTOR		BY: <i>[Signature]</i> PRINCIPAL ENGINEER		APPROVED BY: <i>[Signature]</i> PUBLIC WORKS DIRECTOR		R-3351 SHEET 6 OF 7	
CHIEF P.W. INSPECTOR		DATE: 5/18/94		DATE: 5/24/94		FILE NO.	
DESIGNED BY: RVZ		DRAWN BY: CURT RAM		CHECKED BY: REM		INDEXED 11-14-94/PC 3728-S	



CITY OF RIVERSIDE, CALIFORNIA PUBLIC WORKS DEPARTMENT		<b>REHABILITATION OF ARTERIAL          STREETS 93-94</b>		ACCT. NO. 230-541500-440223-30035
APPROVED BY DEPUTY P.W. DIRECTOR PRINCIPAL ENGINEER CHIEF P.W. INSPECTOR STREET SERVICES SURVEYOR TRAFFIC DIVISION	BY DATE DATE DATE DATE DATE	APPROVED BY PUBLIC WORKS DIRECTOR	<b>VAN BUREN BOULEVARD          LINCOLN TO S'LY CITY LIMITS</b>	SHEET <b>7</b> OF <b>7</b>
DESIGNED BY: <b>RJZ</b> DRAWN BY: <b>CURT, RJM</b> CHECKED BY: <b>RCM</b>	DATE: <b>5/24/99</b>	DATE: <b>5/24/99</b>	HORIZ. SCALE: 1" = 40'	FILE NO.