

# RIVERSIDE CITY OF RIVERSIDE CALIFORNIA

## PUBLIC WORKS DEPARTMENT VAN BUREN BOULEVARD at DUFFERIN AVENUE and at CLEVELAND AVENUE INTERSECTION IMPROVEMENTS

### GENERAL CONSTRUCTION NOTES

- CONSTRUCTION SHALL BE IN ACCORDANCE WITH THE CITY OF RIVERSIDE STANDARD DRAWINGS AND STANDARD SPECIFICATIONS FOR PUBLIC WORKS CONSTRUCTION 1994 EDITION.
- EXISTING UTILITIES SHOWN ON THIS PLAN ARE PLOTTED FROM UTILITY RECORDS. THE CONTRACTOR IS REQUIRED TO TAKE DUE PRECAUTIONARY MEASURES TO LOCATE AND PROTECT ALL UTILITIES WHETHER OR NOT SHOWN ON THIS PLAN. IF THE COVER OF A UTILITY IS KNOWN, IT IS SHOWN IN THE PROFILE. UTILITIES SHOWN IN THE PROFILE AS INDICATES THAT THE COVER IS UNKNOWN, BUT THE UTILITY IS NOT EXPECTED TO CONFLICT WITH THE PROPOSED IMPROVEMENTS.
- CONFLICTING UTILITIES SHOWN WITHIN CONSTRUCTION AREA WILL BE RELOCATED PRIOR TO CONSTRUCTION.
- IF THE CONTRACTOR PLANS TO USE ANY EQUIPMENT OVER THE M.W.D. PIPELINE WHICH WILL IMPOSE LOADS GREATER THAN AASHTO H-20, THE CONTRACTOR WILL BE REQUIRED TO SUBMIT THE SPECIFICATIONS OF SUCH EQUIPMENT TO THE M.W.D. FOR REVIEW AND WRITTEN APPROVAL AT LEAST TWO WEEKS PRIOR TO ITS USE.
- ALL ELEVATIONS SHOWN ON THE PLANS SHALL BE STAKED IN THE FIELD.
- PRIME CONTRACTORS BIDDING THIS WORK SHALL HAVE A CLASS A OR C-12 LICENSE.
- ALL PERMANENT PAVEMENT DELINEATION WILL BE PERFORMED BY CITY FORCES.
- A.C. BERM AT M.O.C. OF ALL RETURNS TO BE DEPRESSED TO PROVIDE WHEELCHAIR ACCESS.

### SPECIFIC CONSTRUCTION NOTES

- NUMBERS ABOVE 100 IN A HEXAGON ON THE PLAN REFER TO THE RESPECTIVE STANDARD DRAWING AND SHALL BE CONSTRUCTED ACCORDINGLY. UNLESS MODIFICATIONS ARE NOTED ON THE PLAN OR COVER SHEET. ANY NUMBER SHOWN BELOW THE STANDARD DRAWING NUMBER INDICATES THE SPECIFIC ALTERNATE TO BE CONSTRUCTED.
- ADV ADJUST EXIST. S.D. MANHOLE, WATER MANHOLE OR GATE VALVE TO GRADE.
- E POWER POLE TO BE ADJUSTED BY THE P.U. ELECTRIC DIVISION PRIOR TO CONSTRUCTION.
- T/I TRANSPLANT EXISTING PALM TREE OFF SITE, AS DIRECTED BY STREET TREE INSPECTOR AND AS DESCRIBED IN PARK & RECREATION SECTION OF THE ACCOMPANYING SPECIAL PROVISIONS LOCATION TO BE DETERMINED BY THE STREET TREE INSPECTOR. CLASS I-6" TO 18", CLASS II-18" TO 36", CLASS III-OVER 36".
- TEL EXISTING TELEPHONE POLE TO BE RELOCATED BY PACIFIC BELL PRIOR TO CONSTRUCTION.
- W FIRE HYDRANT TO BE ADJUSTED BY THE P.U. WATER DIVISION PRIOR TO CONSTRUCTION.

### STREET TREE PLANTING AND RELOCATION

ALL RELATED WORK SHALL CONFORM TO THE CITY OF RIVERSIDE PARK AND RECREATION DEPARTMENT STANDARDS AND CITY OF RIVERSIDE STREET TREE POLICIES.

WHEN CALLING FOR INSPECTIONS CONTACT THE STREET TREE INSPECTOR A MINIMUM OF 48 HOURS IN ADVANCE AT (909) 351-6126 TO SCHEDULE AN INSPECTION. A FIELD NOTICE WILL BE ISSUED AS WRITTEN APPROVAL FOR EACH STAGE OF INSPECTION. A VERBAL APPROVAL WILL NOT BE ACCEPTABLE. INSPECTIONS ARE REQUIRED:

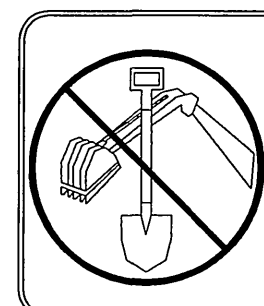
- AFTER COMPLETION OF FINAL GRADING OF THE LOTS AND WHEN ALL UTILITY SERVICES AND SEWER LATERAL HAVE BEEN MARKED, BUT PRIOR TO DIGGING PLANT PITS, ALL FINAL STREET TREE LOCATIONS ARE TO BE SPOTTED IN THE FIELD BY THE STREET TREE INSPECTOR;
- WHILE DIGGING PLANT PITS AND PLANTING/RELOCATING TREES;
- AFTER PLANTING AND ALL OTHER INDICATED OR SPECIFIED WORK HAS BEEN COMPLETED FOR START OF MAINTENANCE;
- AT END OF THE MAINTENANCE PERIOD, THE CONTRACTOR SHALL CALL THE STREET TREE INSPECTOR AT (909) 351-6126 FOR A FINAL ACCEPTANCE INSPECTION IN ORDER TO BE RELEASED FROM MAINTENANCE. CONTRACTOR'S SURETY WILL NOT BE RELEASED UNTIL AFTER RECEIPT OF WRITTEN NOTIFICATION FROM THE CITY THAT THE TREES PASS FINAL INSPECTION AND THE PARK AND RECREATION DEPARTMENT IS ASSUMING MAINTENANCE RESPONSIBILITIES;

THE CONTRACTOR SHALL BE RESPONSIBLE TO ACCEPTABLY MAINTAIN ALL PLANTINGS FOR A MINIMUM PERIOD OF ONE (1) YEAR.

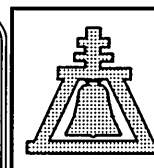
STREET NAME	BOTANICAL NAME/COMMON NAME	MIN. SIZE	APPROX. SPACING	NUMBER REQUIRED
TO BE DETERMINED BY THE STREET TREE INSPECTOR	WASHINGTONIA ROBUSTA/ MEXICAN FAN PALM		RELOCATE	1

BOTH A STREET TREE RELOCATION/REMOVAL PERMIT AS ISSUED BY THE PARK AND RECREATION DEPARTMENT AND A STREET OPENING PERMIT AS ISSUED BY THE PUBLIC WORKS DEPARTMENT ARE REQUIRED PRIOR TO COMMENCEMENT OF TREE RELOCATION AND/OR REMOVAL WORK. FOR ALL EXISTING TREES WITHIN WHAT WILL ULTIMATELY BE THE PUBLIC RIGHT-OF-WAY PAVEMENT AREA, BACKFILL OF ALL HOLES MUST BE INSPECTED BY THE PUBLIC WORKS INSPECTOR FOR PROPER COMPACTION.

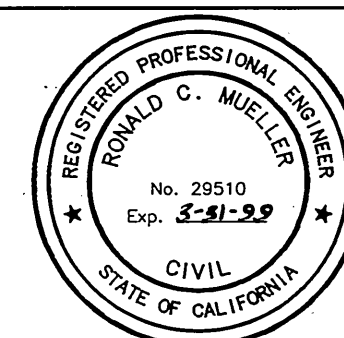
\*NOTE: IN THE INTEREST OF PUBLIC SAFETY AND MAINTENANCE THE STREET TREE INSPECTOR SHALL HAVE THE AUTHORITY TO REVISE THE STREET TREE QUANTITIES AND LOCATIONS SHOWN ON APPROVED PLANS BASED UPON FIELD CONDITIONS FOUND AT THE TIME OF INSTALLATION OF THE TREES.



**IMPORTANT NOTICE**  
Section 4216/4217 of the Government Code requires a Dig Alert Identification Number to be issued before a "Permit to Excavate" will be voided. For your Dig Alert I.D. Number call  
**CALL TOLL FREE**  
**48 HOURS BEFORE YOU DIG**  
**UNDERGROUND SERVICE ALERT**  
**1-800-227-2600**



ENGINEER IN RESPONSIBLE CHARGE  
*Ronald C. Mueller*  
RONALD C. MUELLER  
R.C.E. No. 29510 expires 3/31/99  
DATE 2-25-97

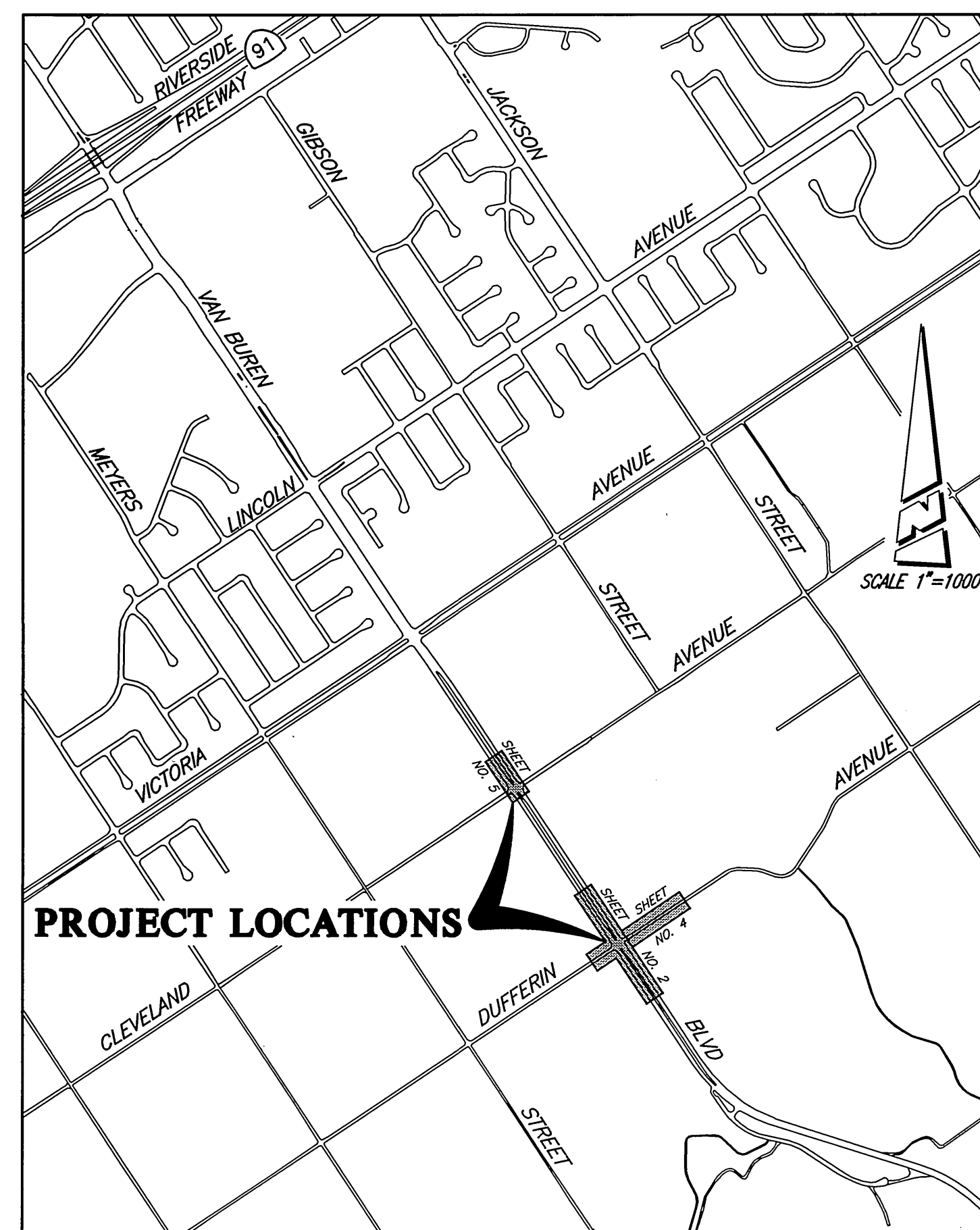


MARK	REVISIONS	APPR.	DATE

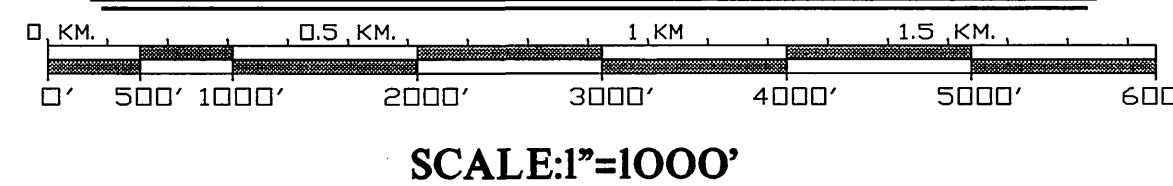
CITY OF RIVERSIDE, CALIFORNIA PUBLIC WORKS DEPARTMENT			
APPROVED BY	BY	DATE	APPROVED BY
DEPUTY P.W. DIRECTOR	<i>[Signature]</i>	2/27/97	<i>[Signature]</i>
PRINCIPAL ENGINEER	<i>[Signature]</i>	2/27/97	<i>[Signature]</i>
SURVEYOR	<i>[Signature]</i>	2/27/97	<i>[Signature]</i>
TRANSIT DIVISION	<i>[Signature]</i>	2/27/97	<i>[Signature]</i>
PARKS DEPARTMENT	<i>[Signature]</i>	2/27/97	<i>[Signature]</i>

VAN BUREN BOULEVARD  
at DUFFERIN AVENUE and  
at CLEVELAND AVENUE  
INTERSECTION IMPROVEMENTS

AS BUILT 8/25/97 RUM  
ACCT. NO. 432-541500-440302-30340  
**R-3356**  
SHEET 1 OF 5



**PROJECT LOCATION PLAN**



SCALE: 1"=1000'

### EXISTING UNDERGROUND & TOPOGRAPHY LEGEND

#### EXISTING UNDERGROUND UTILITIES:

SANITARY SEWER	8" S	TELEPHONE CONDUIT	T
WATER LINE	6" W	ELECTRICAL CONDUIT	E
STORM DRAIN	24" SD	ELECTROLIER LIGHTING CONDUIT	ELC
GAS LINE	3" G	TRAFFIC SIGNAL	SIG
ABANDONED UTILITY	6" (ABAND.)	FIRE ALARM	F

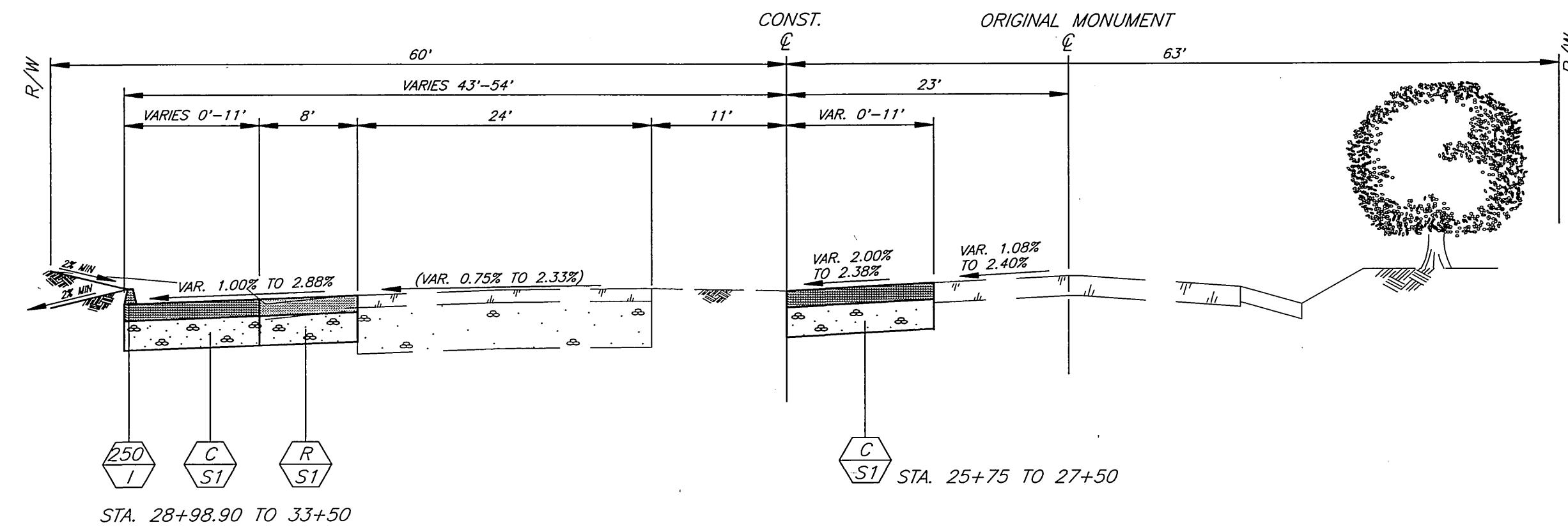
#### EXISTING TOPOGRAPHY:

BLOCK WALL	—	POLE & GUY ANCHOR	—	PEDESTRIAN PUSH BUTTON	—
BOARD FENCE	—	POWER POLE	—	RAILROAD TRACKS	—
WIRE FENCE	—	TELEPHONE POLE	—	RAILROAD SIGNAL	—
CHAIN LINK FENCE	—	TELEPHONE RISER	—	TRAFFIC SIGNAL	—
		JOINT USE POLE	—	TRAFFIC SIGNAL ON MAST ARM	—
		PULL BOX	—	TRAFFIC SIGNAL CONTROLLER	—
		TRAFFIC SIGN	—	TRAFFIC SIGNAL PRESSURE DETECTOR	—
		PARKING METER	—	TRAFFIC SIGNAL LOOP DETECTOR	—
		FIRE ALARM BOX	—	STREET LIGHT & TRAFFIC SIGNAL ON MAST ARM	—
		STREET NAME SIGN	—	STREET LIGHT (UPRIGHT)	—
		GAS METER	—	STREET LIGHT ON MAST ARM	—
		MAIL BOX	—	STEEL POST	—
		FAUCET	—	WOOD POST	—
		WALK-DON'T WALK PEDESTRIAN SIGNAL	—		
		ELECTROLYSIS TEST STATION	—		
		WHEEL STOP	—		
		A.C. BERM	—		
		CONCRETE	—		
		ASPHALT	—		
		BUILDING	—		
		EDGE OF PAVEMENT	—		

### CONSTRUCTION LEGEND

CENTER LINE	—	TOP OF SLOPE	—
RIGHT-OF-WAY	—	TOE OF SLOPE	—
SUBDIVISION LOT LINE	—	DIRECTION OF FLOW	—

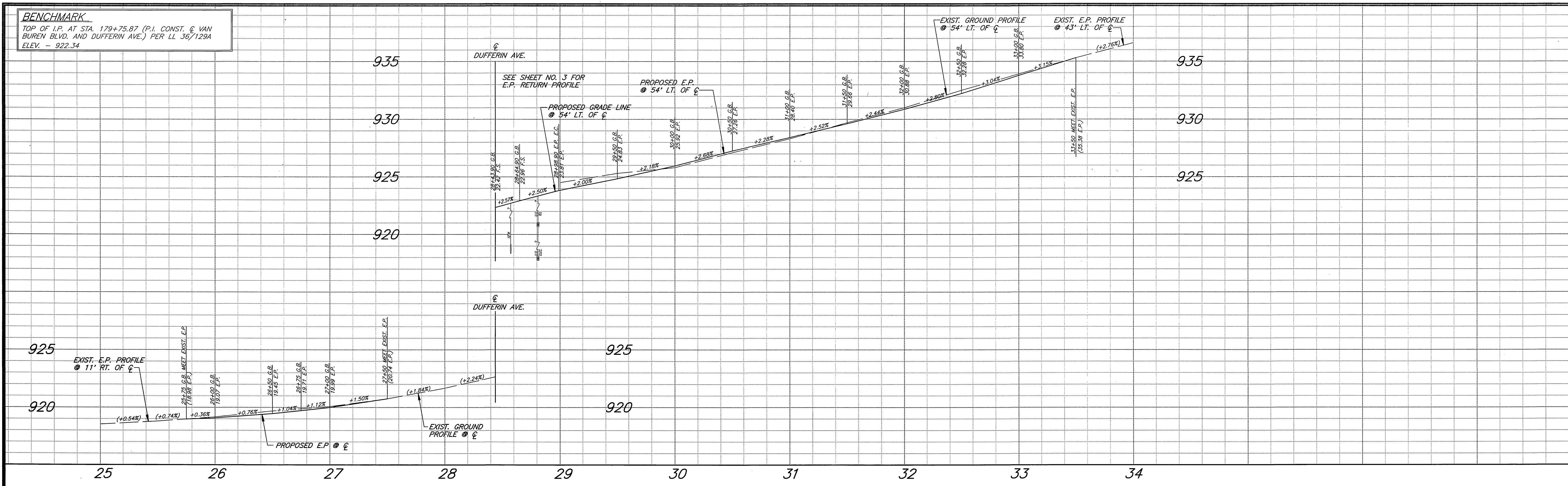
	CONSTRUCT STRUCTURAL SECTION OF: ALT. I: 0.54' D.G.A.C. OVER 0.96' C.A.B. ALT. II: 1.01' FULL DEPTH A.C.
	CONSTRUCT STRUCTURAL SECTION OF: ALT. I: 0.38' D.G.A.C. OVER 0.72' C.A.B. ALT. II: 0.82' FULL DEPTH A.C.
	REMOVE AND REPLACE EXIST. STRUCTURAL SECTION WITH: ALT. I: 0.54' D.G.A.C. OVER 0.96' C.A.B. ALT. II: 1.01' FULL DEPTH A.C.
	REMOVE AND REPLACE EXIST. STRUCTURAL SECTION WITH: ALT. I: 0.38' D.G.A.C. OVER 0.72' C.A.B. ALT. II: 0.82' FULL DEPTH A.C.
	CONSTRUCT A VARIABLE THICKNESS 0.10' MINIMUM DGAC OVERLAY.



VAN BUREN BLVD @ DUFFERIN AVE-TYPICAL SECTION

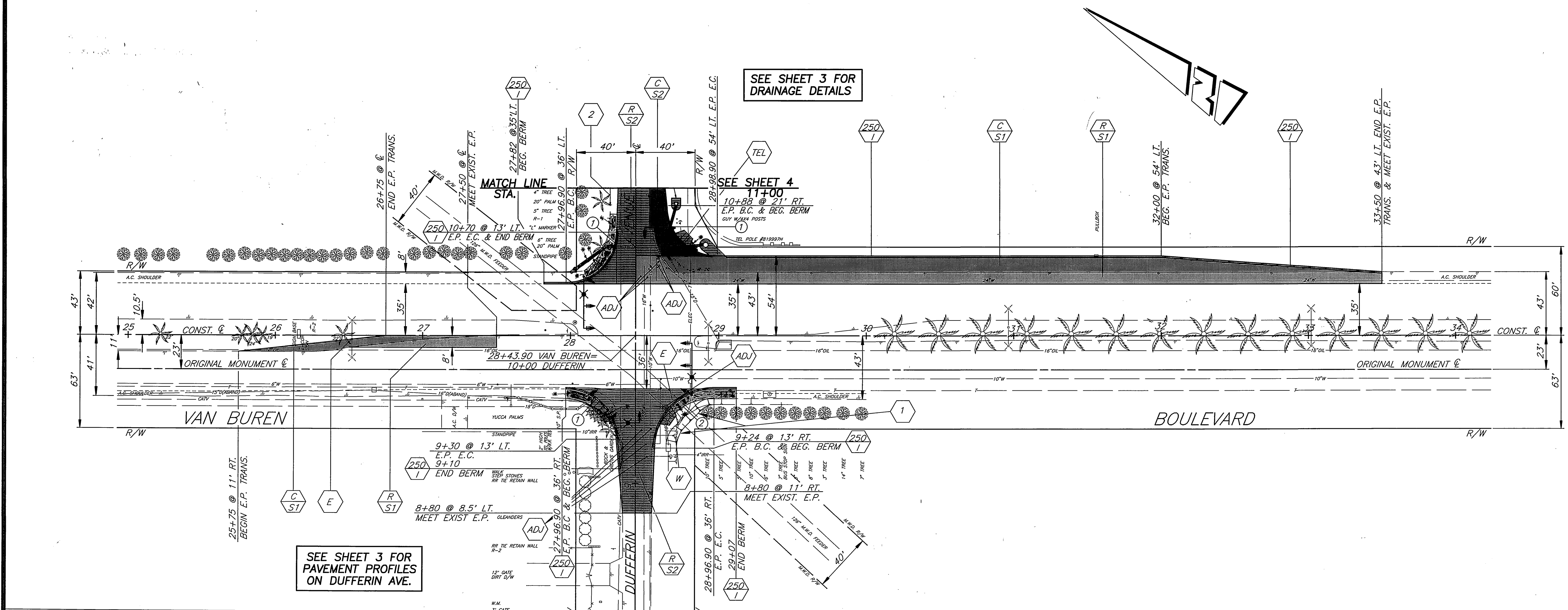
SCALE: HORIZ 1"=10'  
VERT 1"=4'

**BENCHMARK**  
 TOP OF I.P. AT STA. 179+75.87 (P.I. CONST. @ VAN BUREN BLVD. AND DUFFERIN AVE.) PER LL 36/1294  
 ELEV. - 922.34



**SPECIFIC CONSTRUCTION NOTES**

- 1 GRADE SLOPE AS SHOWN AT 2:1 MAXIMUM SLOPE.
- 2 GRADE EARTHEN SWALE TO DRAIN AT 1% MINIMUM.
- ADJ ADJUST EXIST. S.D. MANHOLE, WATER MANHOLE OR GATE VALVE TO GRADE.
- E POWER POLE TO BE ADJUSTED BY THE P.U. ELECTRIC DIVISION PRIOR TO CONSTRUCTION.
- TEL EXISTING TELEPHONE POLE TO BE RELOCATED BY PACIFIC BELL PRIOR TO CONSTRUCTION.
- W FIRE HYDRANT TO BE ADJUSTED BY THE P.U. WATER DIVISION PRIOR TO CONSTRUCTION.



**CONSTRUCTION LEGEND**

- CONSTRUCT STRUCTURAL SECTION OF:  
ALT. I: 0.54' D.G.A.C. OVER 0.96' C.A.B.  
ALT. II: 1.01' FULL DEPTH A.C.
- CONSTRUCT STRUCTURAL SECTION OF:  
ALT. I: 0.38' D.G.A.C. OVER 0.72' C.A.B.  
ALT. II: 0.82' FULL DEPTH A.C.
- REMOVE AND REPLACE EXIST. STRUCTURAL SECTION WITH:  
ALT. I: 0.54' D.G.A.C. OVER 0.96' C.A.B.  
ALT. II: 1.01' FULL DEPTH A.C.
- REMOVE AND REPLACE EXIST. STRUCTURAL SECTION WITH:  
ALT. I: 0.38' D.G.A.C. OVER 0.72' C.A.B.  
ALT. II: 0.82' FULL DEPTH A.C.

**CURVE DATA**

Δ	R	L	T	
1	90° 00' 00"	34'	53.41'	34.00'
2	90° 00' 00"	40'	62.83'	40.00'

SEE SHEET 3 FOR PAVEMENT PROFILES ON DUFFERIN AVE.

SEE SHEET 3 FOR DRAINAGE DETAILS

SEE SHEET 4 11+00

ENGINEER IN RESPONSIBLE CHARGE  
**Ronald C. Mueller**  
 RONALD C. MUELLER  
 R.C.E. No. 29510 expires 3/31/99  
 DATE 2-25-97

CITY OF RIVERSIDE, CALIFORNIA  
 PUBLIC WORKS DEPARTMENT

APPROVED BY: [Signature]  
 DATE: 2/27/97

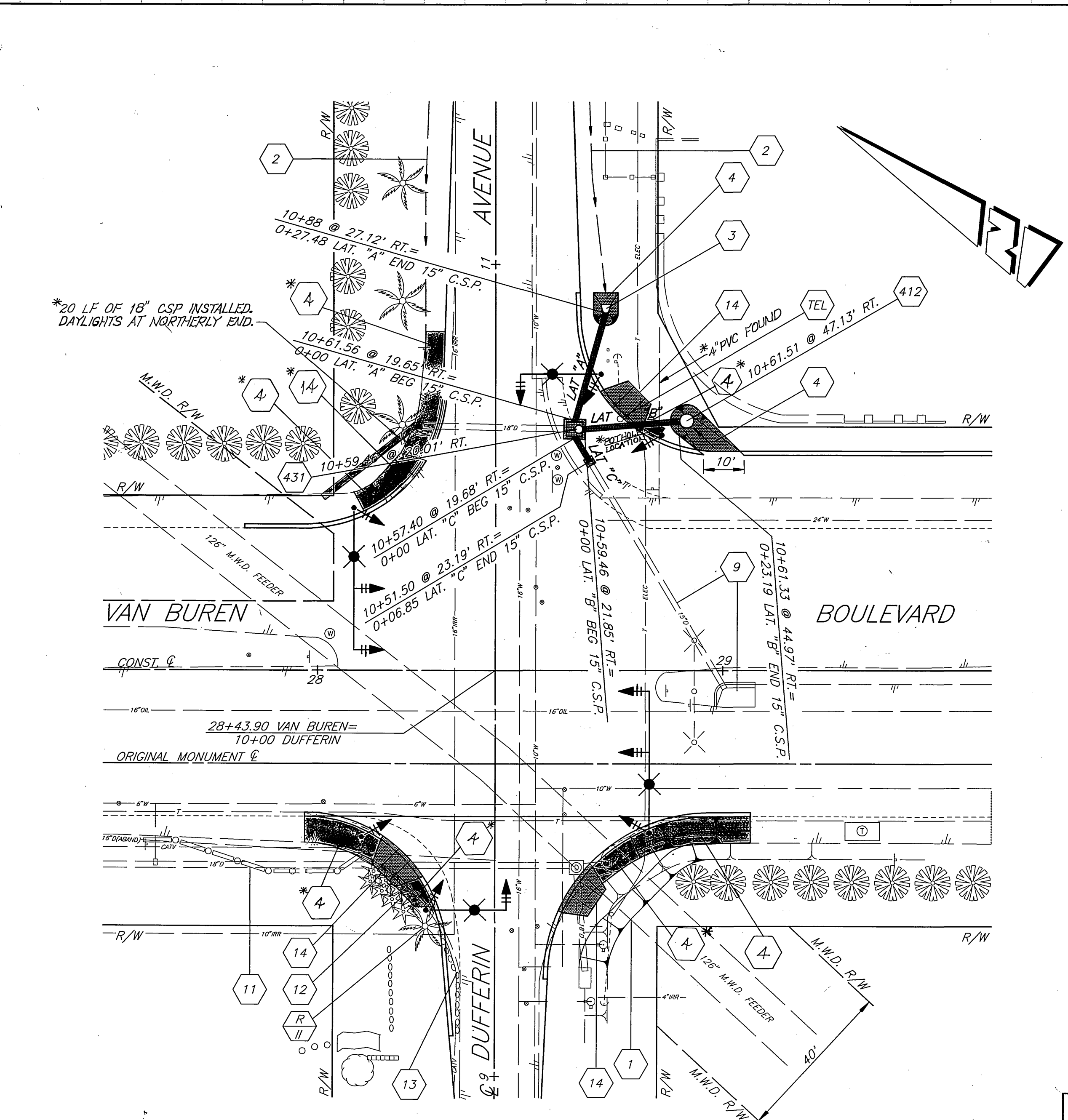
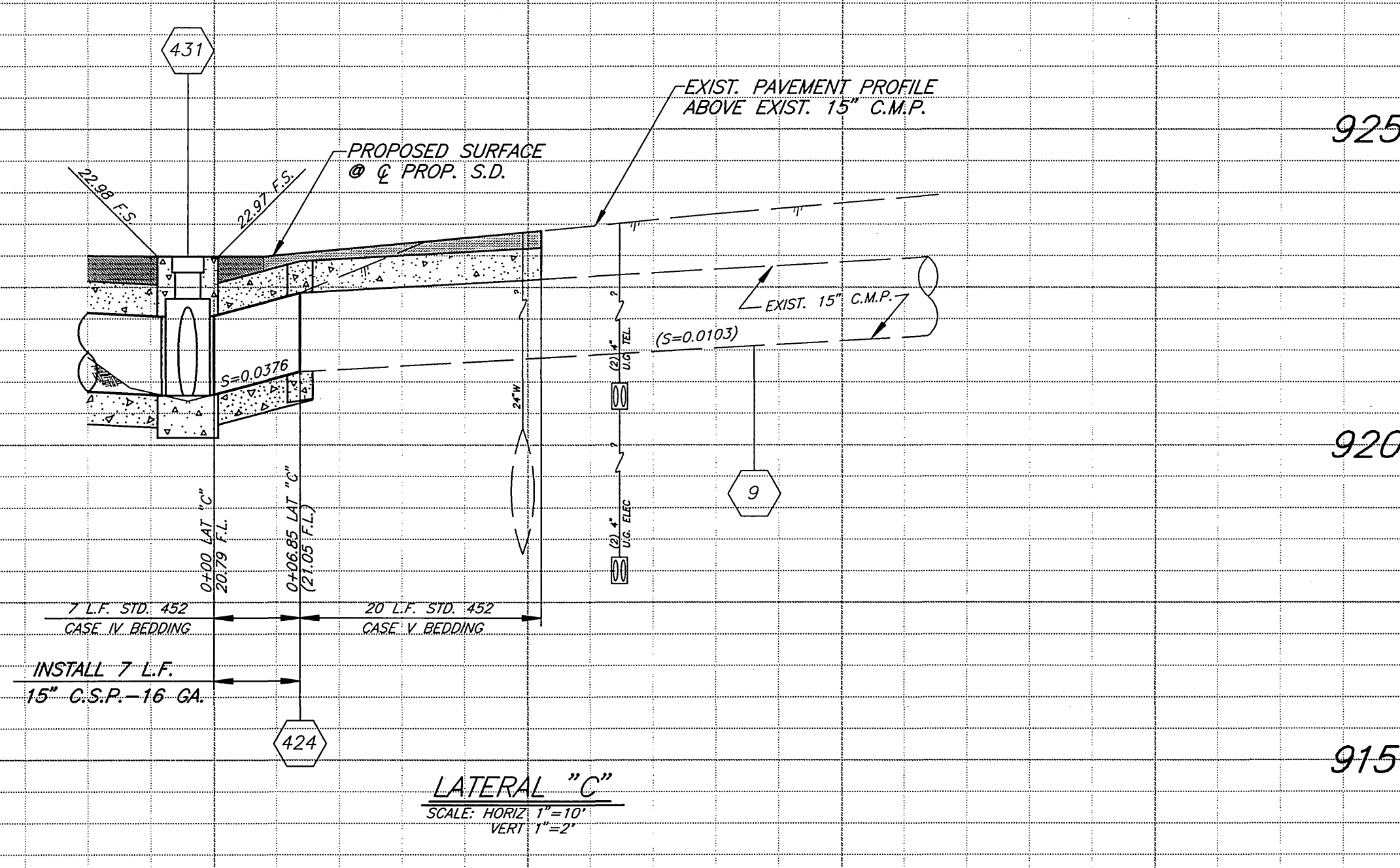
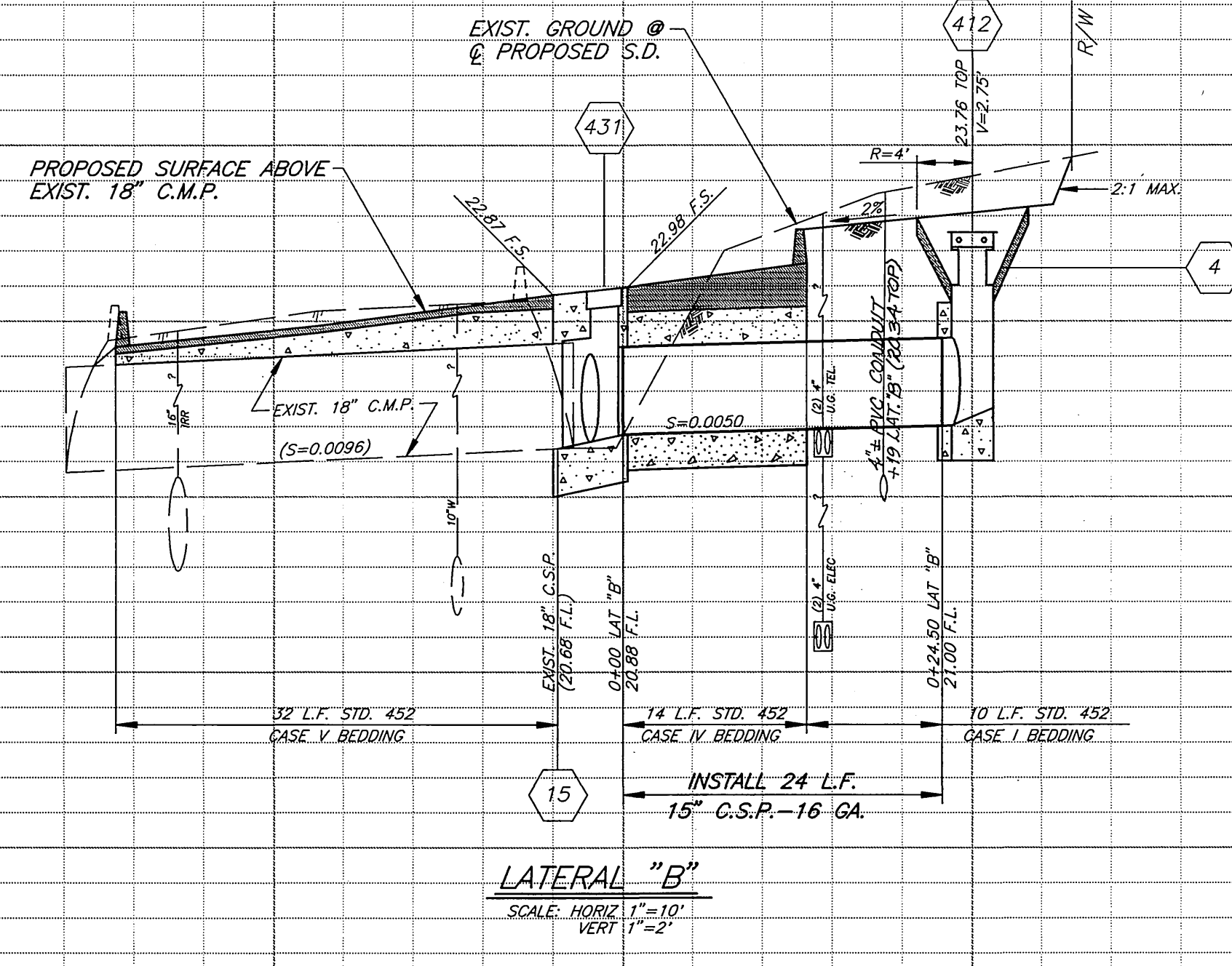
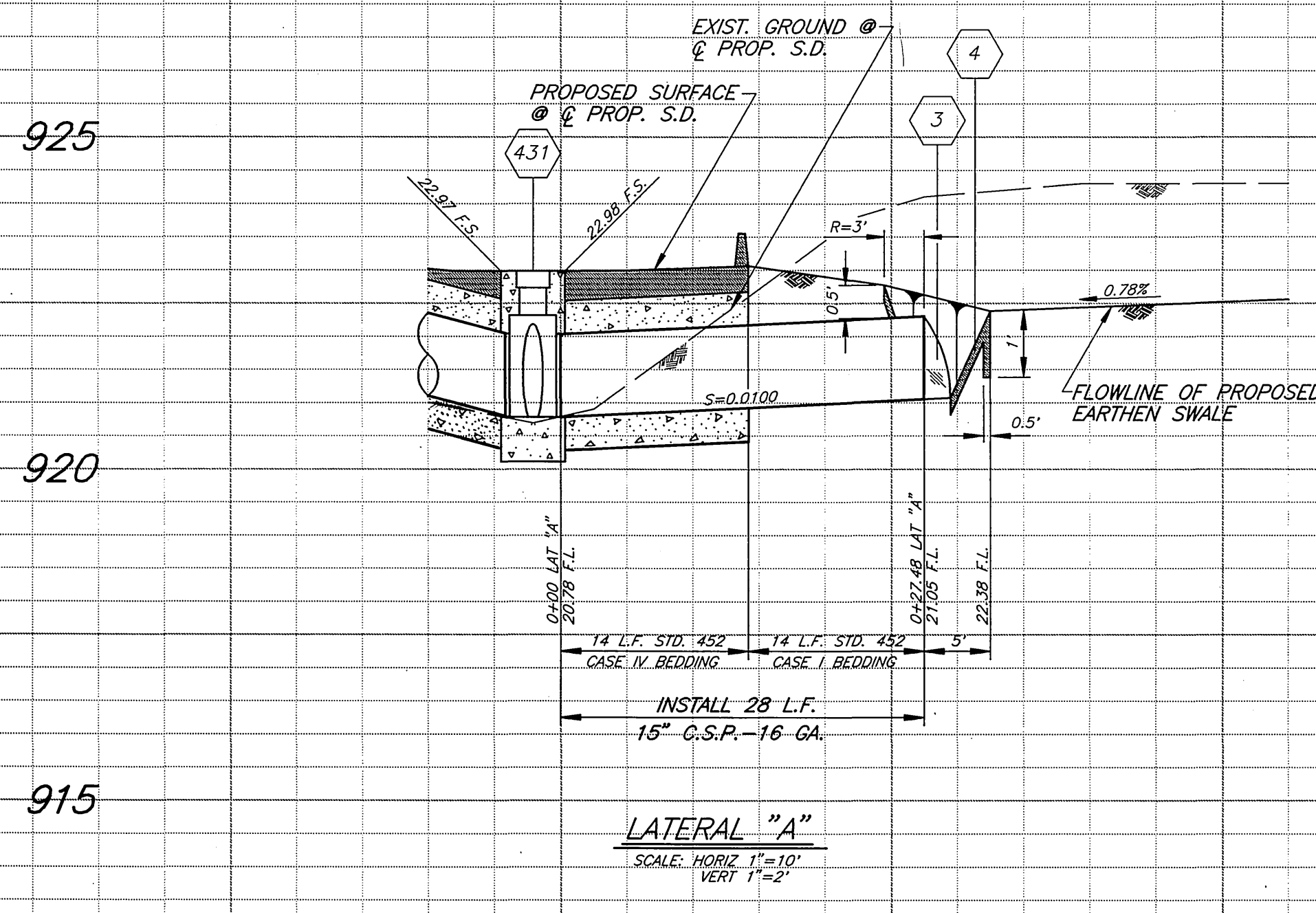
DESIGNED BY: R.G. FANNY, DRAWN BY: CURT RUFF, CHECKED BY: [Signature]

CITY OF RIVERSIDE, CALIFORNIA  
 PUBLIC WORKS DEPARTMENT

APPROVED BY: [Signature]  
 DATE: 2/27/97

VAN BUREN BOULEVARD  
 at DUFFERIN AVENUE and  
 at CLEVELAND AVENUE  
 INTERSECTION IMPROVEMENTS

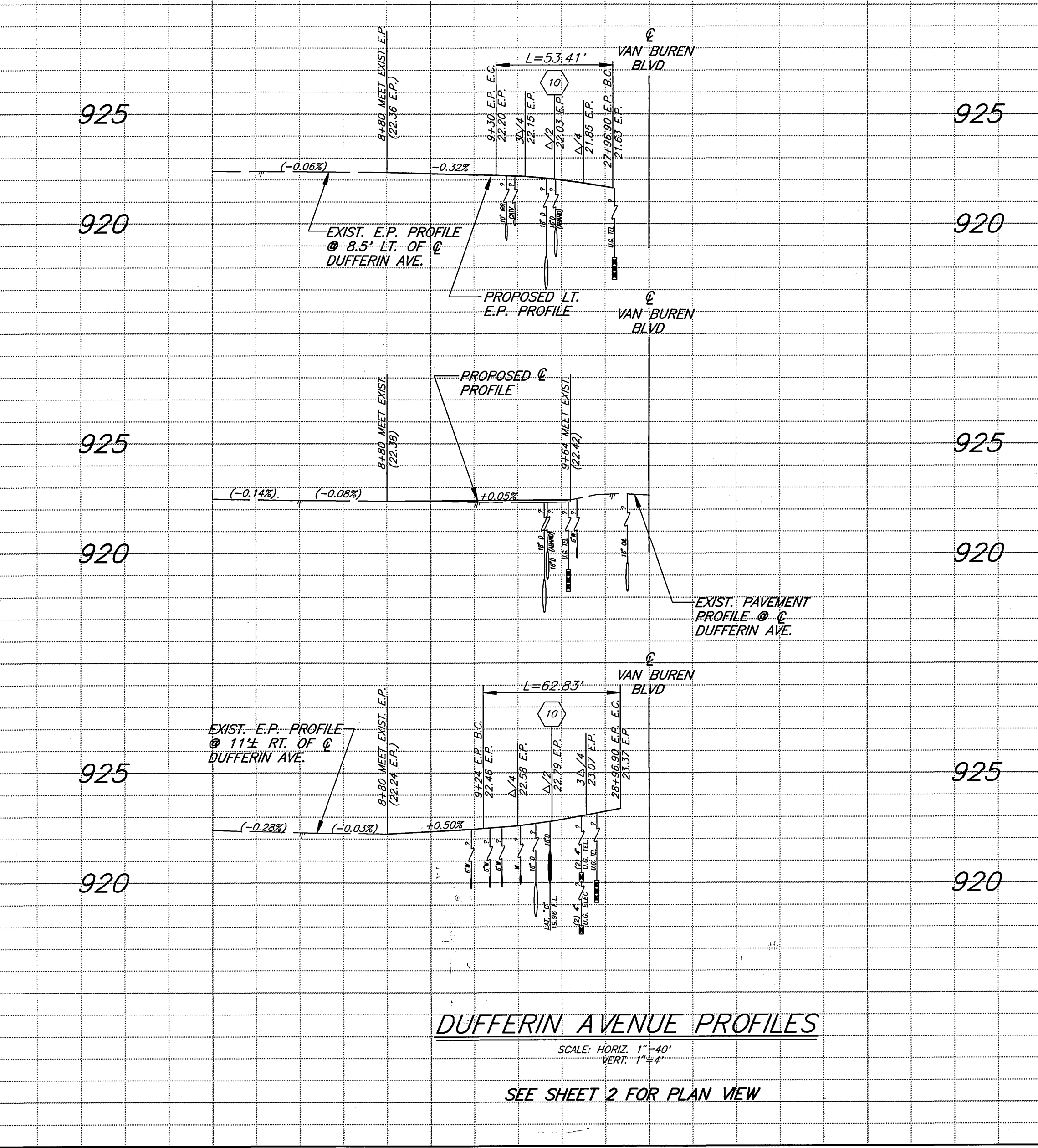
AS BUILT 9/27/97 P.M.  
 ACCT. NO. 432-541500-440302-30340  
**R-3356**  
 SHEET 2 OF 5  
 FILE: FRANDY-R3356DUF  
 HORIZ. SCALE: 1" = 40' VERT. SCALE: 1" = 4'



**BENCHMARK**  
 TOP OF I.P. AT STA. 179+75.87 (P.I. CONST. @ VAN BUREN BLVD. AND DUFFERIN AVE.) PER LL 36/129A  
 ELEV. = 922.34

**SPECIFIC CONSTRUCTION NOTES**

- 1 GRADE SLOPE AS SHOWN AT 2:1 MAXIMUM SLOPE.
- 2 GRADE EARTHEN SWALE TO DRAIN AT 1% MINIMUM.
- 3 INSTALL 15" C.S.P., 16 GA. END SECTION.
- 4 CONSTRUCT 0.25' THICK A.C. DRAINAGE APRON.
- 9 REMOVE ALL DIRT AND DEBRIS FROM EXIST. 15" C.M.P. AND FROM EXIST. INLET APRON PRIOR TO CONNECTION TO PROPOSED 15" C.S.P.
- 10 A.C. BERM AT M.O.C. OF ALL RETURNS TO BE DEPRESSED TO PROVIDE WHEELCHAIR ACCESS.
- 11 REMOVE AND DISPOSE OF EXISTING R.R. TIES AND WOOD POSTS.
- 12 CLEAR EXISTING VEGETATION.
- 13 RELOCATE EXISTING ROCKS TO BEHIND PROPOSED BERM.
- 14 CONSTRUCT 0.25' THICK A.C. WHEELCHAIR RAMP PER DIMENSIONS SHOWN ON STD. 304.
- 15 TRIM END OF EXISTING 18" C.M.P. AS NEEDED TO CONSTRUCT MANHOLE PER STD. 431.
- R REMOVE EXIST. PALM TREE, CLASS I-6" TO 18", CLASS II-18" TO 36", CLASS III-OVER 36".
- TEL EXISTING TELEPHONE POLE TO BE RELOCATED BY PACIFIC BELL PRIOR TO CONSTRUCTION.



**CAUTION:**  
 SEE GENERAL CONSTRUCTION NOTE 4 ON SHEET 1 PRIOR TO BEGINNING WORK NEAR M.W.D. FACILITIES.

**CAUTION:**  
 SEE GENERAL CONSTRUCTION NOTE 4 ON SHEET 1 PRIOR TO BEGINNING WORK NEAR M.W.D. FACILITIES.

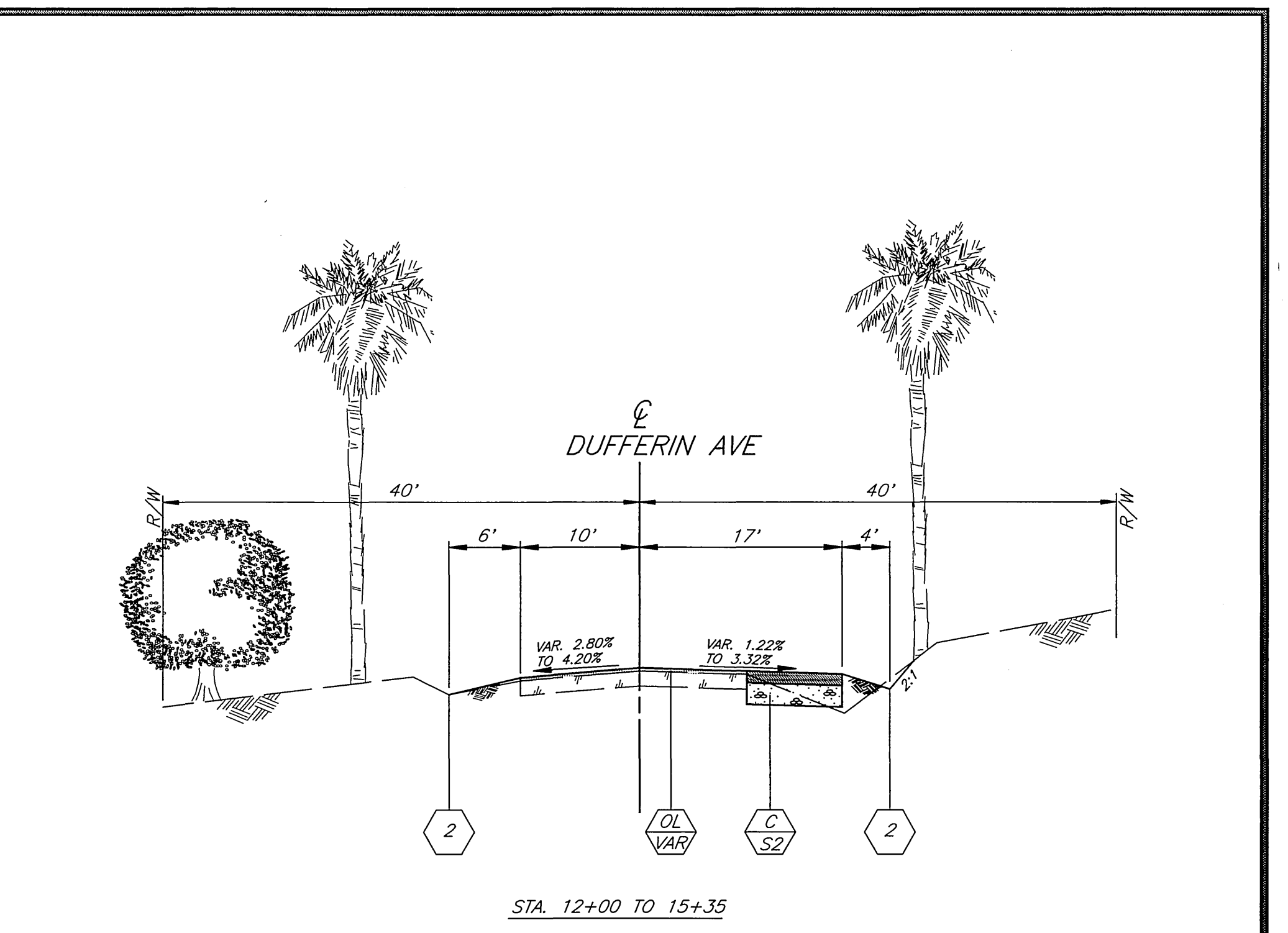
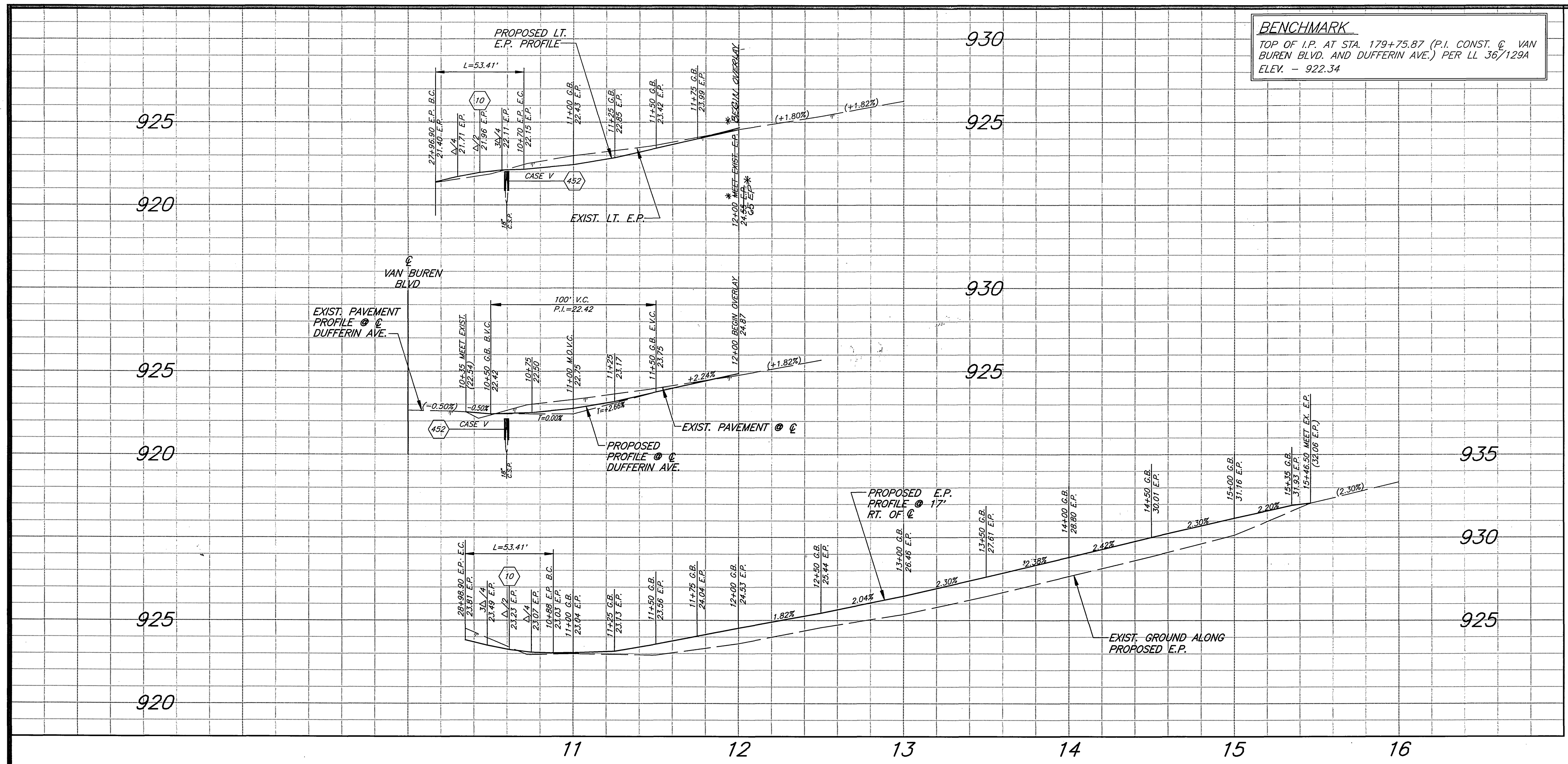
ENGINEER IN RESPONSIBLE CHARGE  
**Ronald C. Mueller**  
 R.C.E. No. 29510 expires 3/31/99  
 DATE 2-25-97

CITY OF RIVERSIDE, CALIFORNIA  
 PUBLIC WORKS DEPARTMENT

APPROVED BY: *[Signature]*  
 DATE: 2/27/97

**VAN BUREN BOULEVARD at DUFFERIN AVENUE and at CLEVELAND AVENUE INTERSECTION IMPROVEMENTS**

ACCT. NO. 432-541500-440302-30340  
**R-3356**  
 SHEET 3 OF 5  
 FILE: FRANDY-R3356DUF

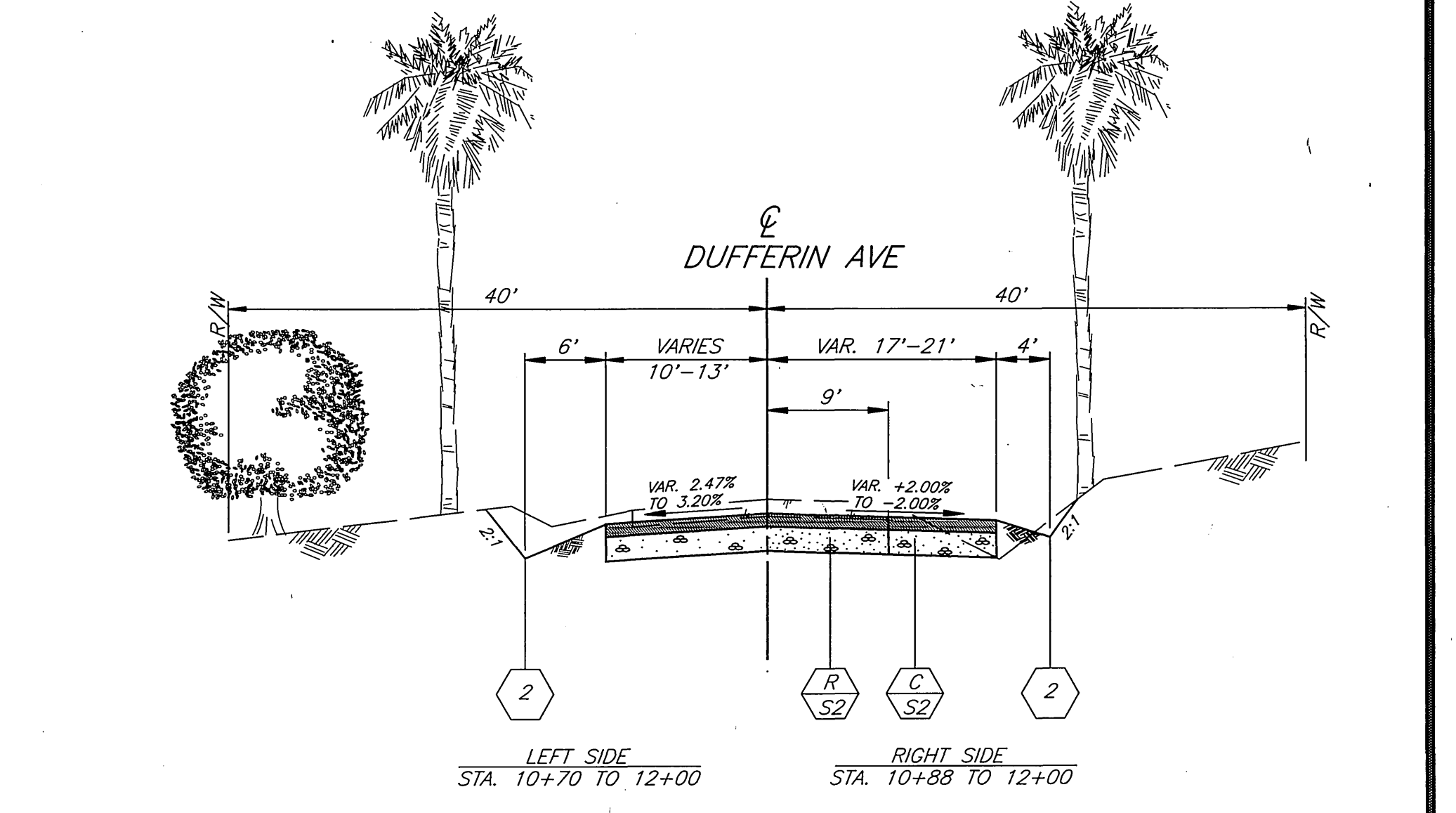
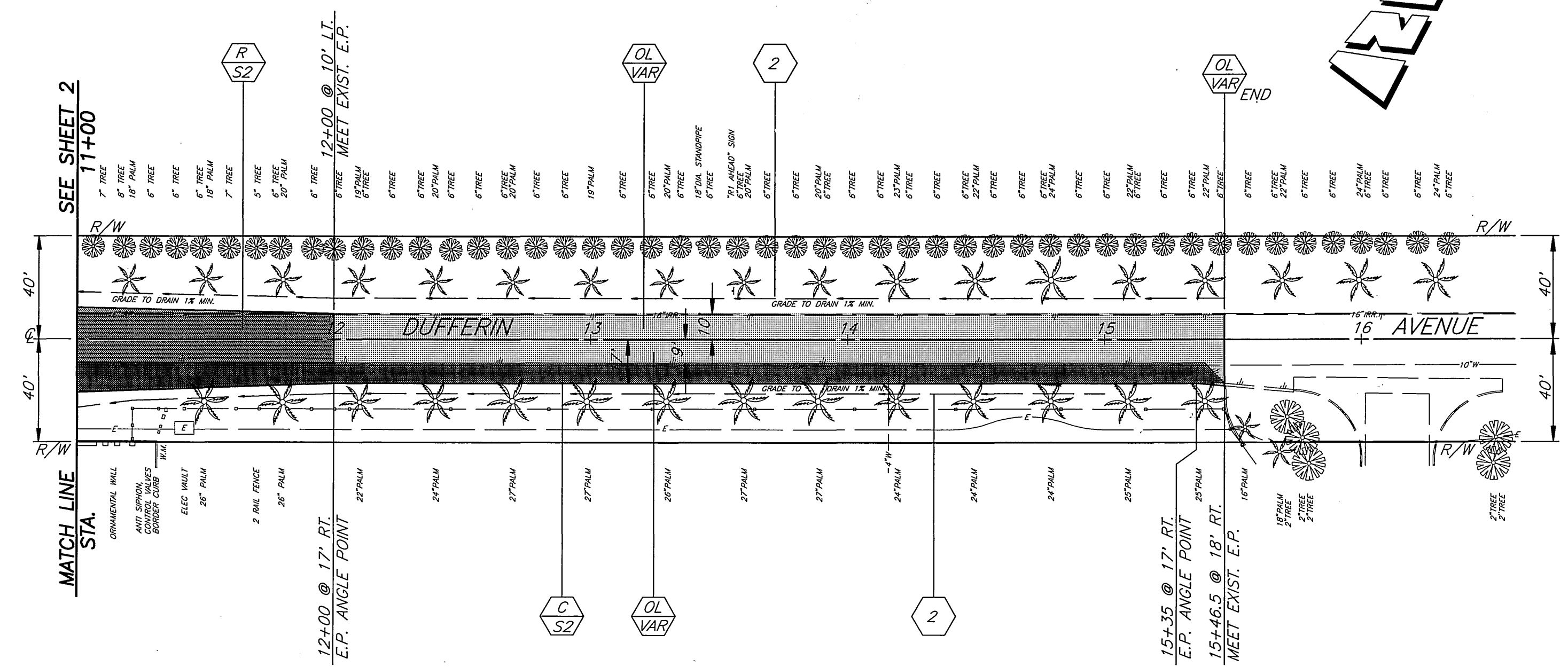


**SPECIFIC CONSTRUCTION NOTES**

- 2 GRADE EARTHEN SWALE TO DRAIN AT 1% MINIMUM.

**CONSTRUCTION LEGEND**

- CONSTRUCT STRUCTURAL SECTION OF:  
ALT. I: 0.38" D.G.A.C. OVER 0.72" C.A.B.  
ALT. II: 0.82" FULL DEPTH A.C.
- REMOVE AND REPLACE EXIST. STRUCTURAL SECTION WITH:  
ALT. I: 0.38" D.G.A.C. OVER 0.72" C.A.B.  
ALT. II: 0.82" FULL DEPTH A.C.
- CONSTRUCT A VARIABLE THICKNESS 0.10" MINIMUM DGAC OVERLAY.



**DUFFERIN AVE-TYPICAL SECTIONS**  
SCALE: HORIZ 1"=10'  
VERT 1"=4'

ENGINEER IN RESPONSIBLE CHARGE  
**Ronald C. Mueller**  
RONALD C. MUELLER  
R.C.E. No. 29510 expires 3/31/99  
DATE 2-25-97



CITY OF RIVERSIDE, CALIFORNIA  
PUBLIC WORKS DEPARTMENT

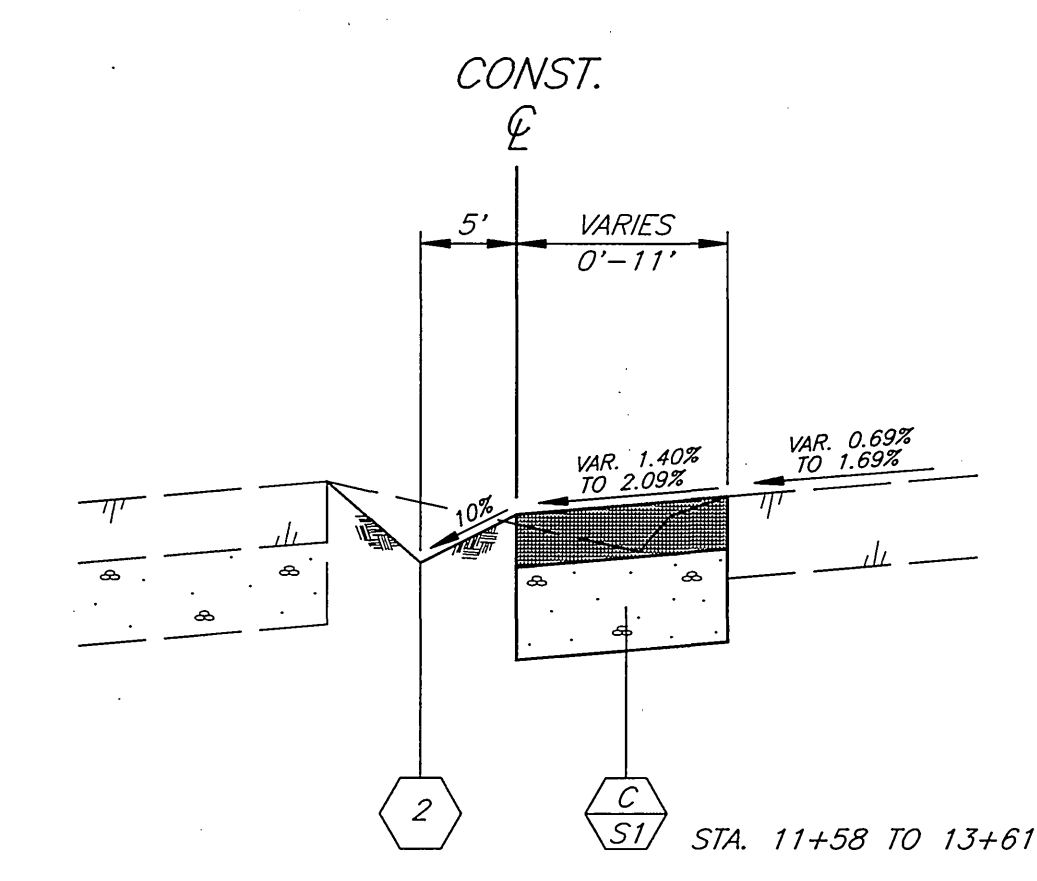
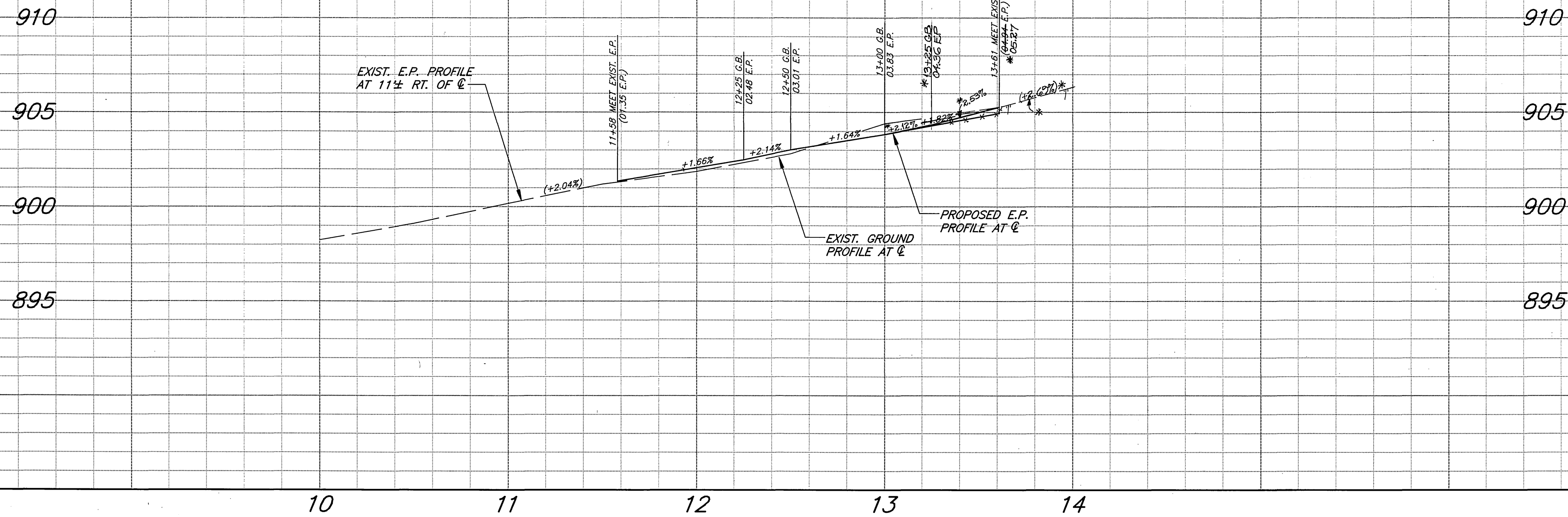
APPROVED BY	BY	DATE	APPROVED BY
DEPUTY P.W. DIRECTOR	<i>[Signature]</i>	2/27/97	<i>[Signature]</i>
PRINCIPAL ENGINEER	<i>[Signature]</i>	2/16/97	PUBLIC WORKS DIRECTOR
STREET SERVICES	<i>[Signature]</i>	2/16/97	
SURVEYOR	<i>[Signature]</i>	2/16/97	
TRAFFIC DIVISION	<i>[Signature]</i>	2/16/97	
PARKS DEPARTMENT	<i>[Signature]</i>	2/16/97	

DESIGNED BY R.G. FANNY DRAWN BY R.J.P. CHECKED BY R.C.M.

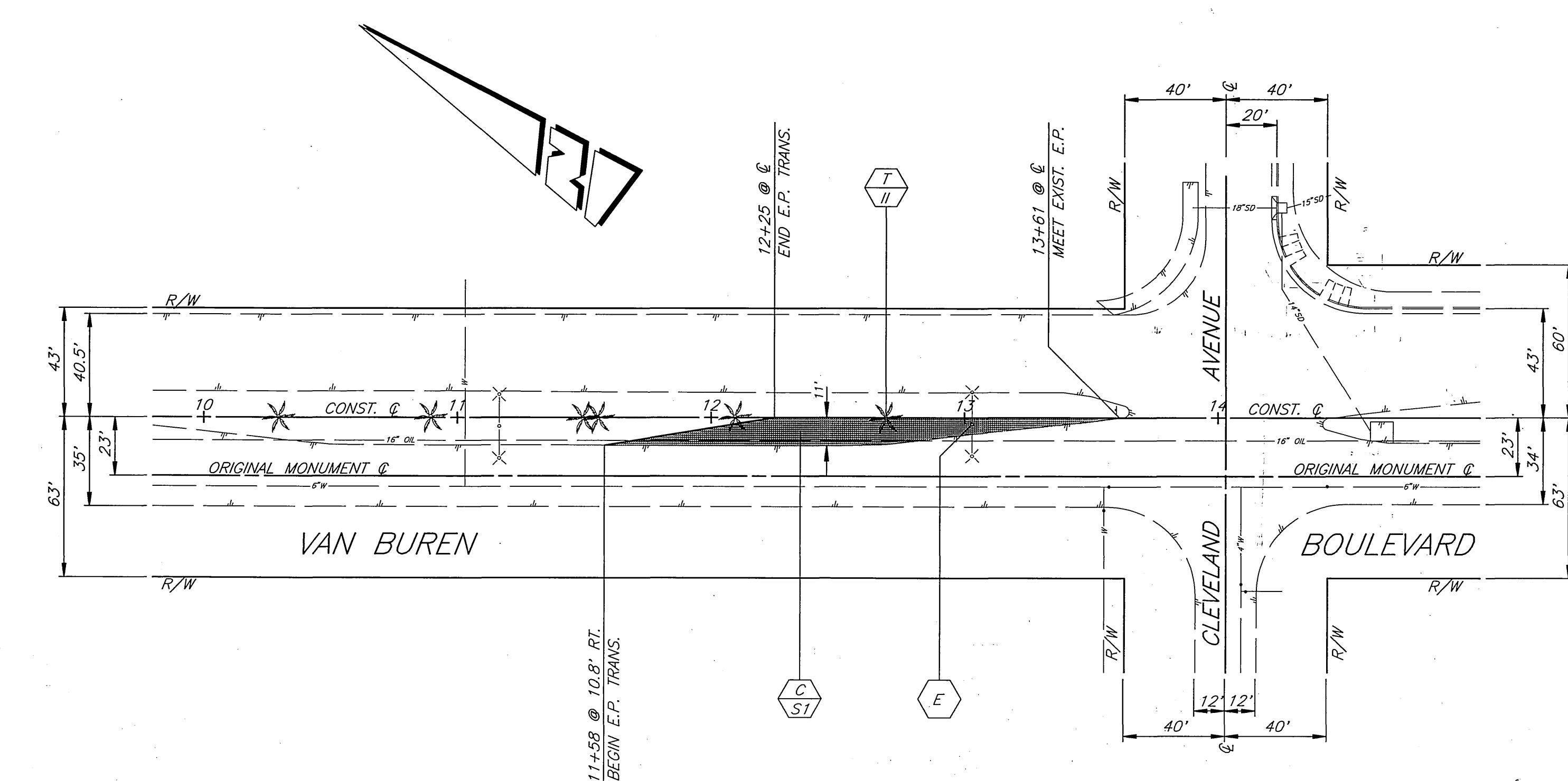
\* AS BUILT 9/25/97 P.W.  
ACT. NO. 432-541500-440302-30340  
**R-3356**  
SHEET 4 OF 5  
FILE: FRANDY-R3356DUF

INDEXED 5-7-97 L-H

**BENCHMARK**  
 TOP OF I.P. AT STA. 179+75.87  
 (P.I. CONST. @ VAN BUREN BLVD. AND DUFFERIN AVE.)  
 ELEV. - 922.34 PER LL 36/129A



**VAN BUREN BLVD @ CLEVELAND AVE-TYPICAL SECTION**  
 SCALE: HORIZ. 1"=10'  
 VERT. 1"=2'



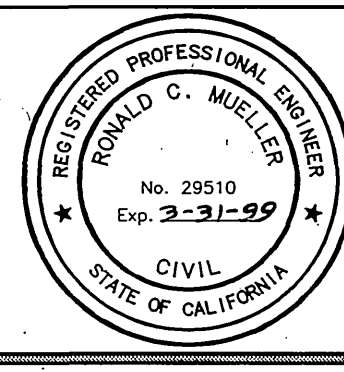
**SPECIFIC CONSTRUCTION NOTES**

- 2 GRADE EARTHEN SWALE TO DRAIN AT 1% MINIMUM.
- E POWER POLE TO BE ADJUSTED BY THE P.U. ELECTRIC DIVISION PRIOR TO CONSTRUCTION.
- T TRANSPLANT EXISTING PALM TREE OFF SITE, AS DIRECTED BY STREET TREE INSPECTOR AND AS DESCRIBED IN PARK & RECREATION SECTION OF THE ACCOMPANYING SPECIAL PROVISIONS LOCATION TO BE DETERMINED BY THE STREET TREE INSPECTOR. CLASS I-6" TO 18", CLASS II-18" TO 36", CLASS III-OVER 36".

**CONSTRUCTION LEGEND**

**C** CONSTRUCT STRUCTURAL SECTION OF:  
 ALT. I: 0.54' D.G.A.C. OVER 0.96' C.A.B.  
 ALT. II: 1.01' FULL DEPTH A.C.

**ENGINEER IN RESPONSIBLE CHARGE**  
**Ronald C. Mueller**  
 R.C.E. No. 29510 expires 3/31/99  
 DATE 2-25-97



DESIGNED BY R.G. FANN DRAWN BY R.JT CHECKED BY RCM

**CITY OF RIVERSIDE, CALIFORNIA**  
**PUBLIC WORKS DEPARTMENT**

APPROVED BY	BY	DATE	APPROVED BY	DATE
DEPUTY P.W. DIRECTOR	<i>[Signature]</i>	2/24/97	<i>[Signature]</i>	2/24/97
PRINCIPAL ENGINEER	<i>[Signature]</i>	2/24/97	PUBLIC WORKS DIRECTOR	
STREET SERVICES	<i>[Signature]</i>	2/24/97		
SURVEYOR	<i>[Signature]</i>	2/24/97		
TRAFFIC DIVISION	<i>[Signature]</i>	2/24/97		
PARKS DEPARTMENT	<i>[Signature]</i>	2/24/97		

**VAN BUREN BOULEVARD**  
**at DUFFERIN AVENUE and**  
**at CLEVELAND AVENUE**  
**INTERSECTION IMPROVEMENTS**

\*AS BUILT 8/26/97 RUM  
 ACCT. NO. 432-541500-440302-30340  
**R-3356**  
 SHEET 5 OF 5  
 FILE: FRANDY-R3356DUF

INDEXED 5-7-97 fH