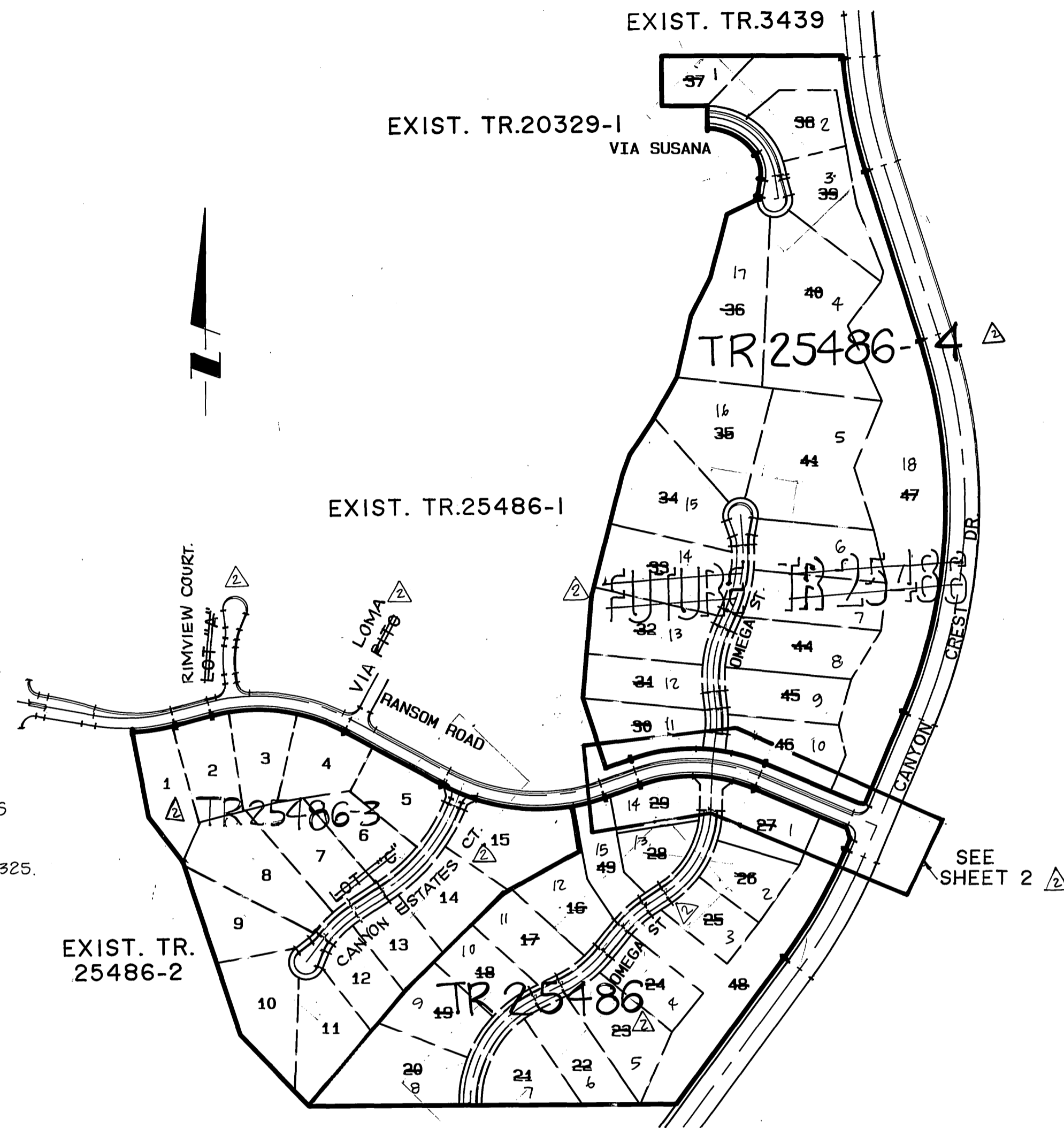
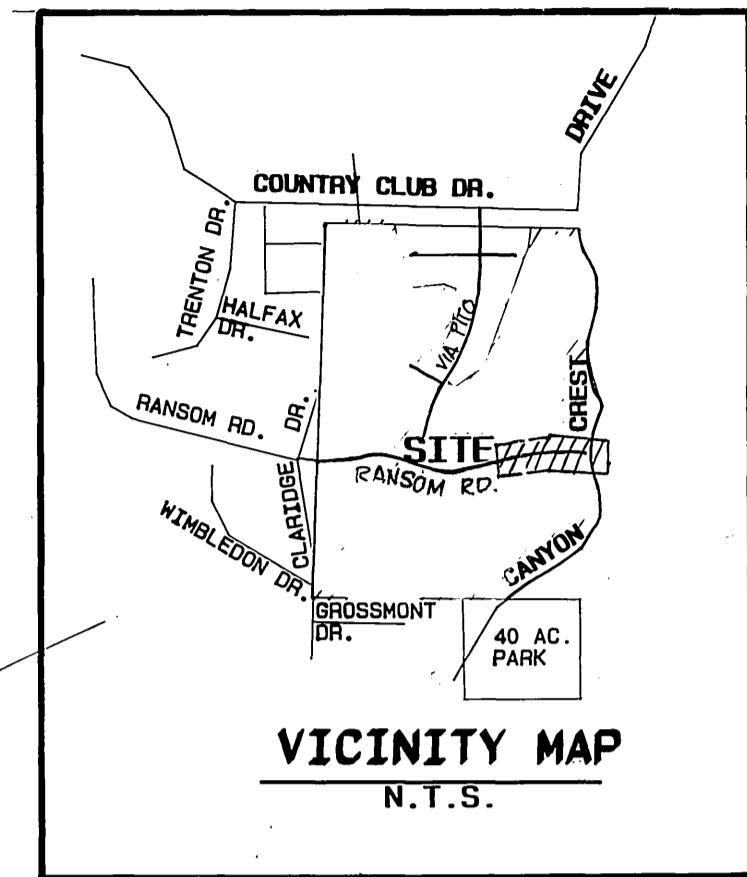


# TRACT 25486-4 STREET IMPROVEMENT PLANS



### CONSTRUCTION NOTES

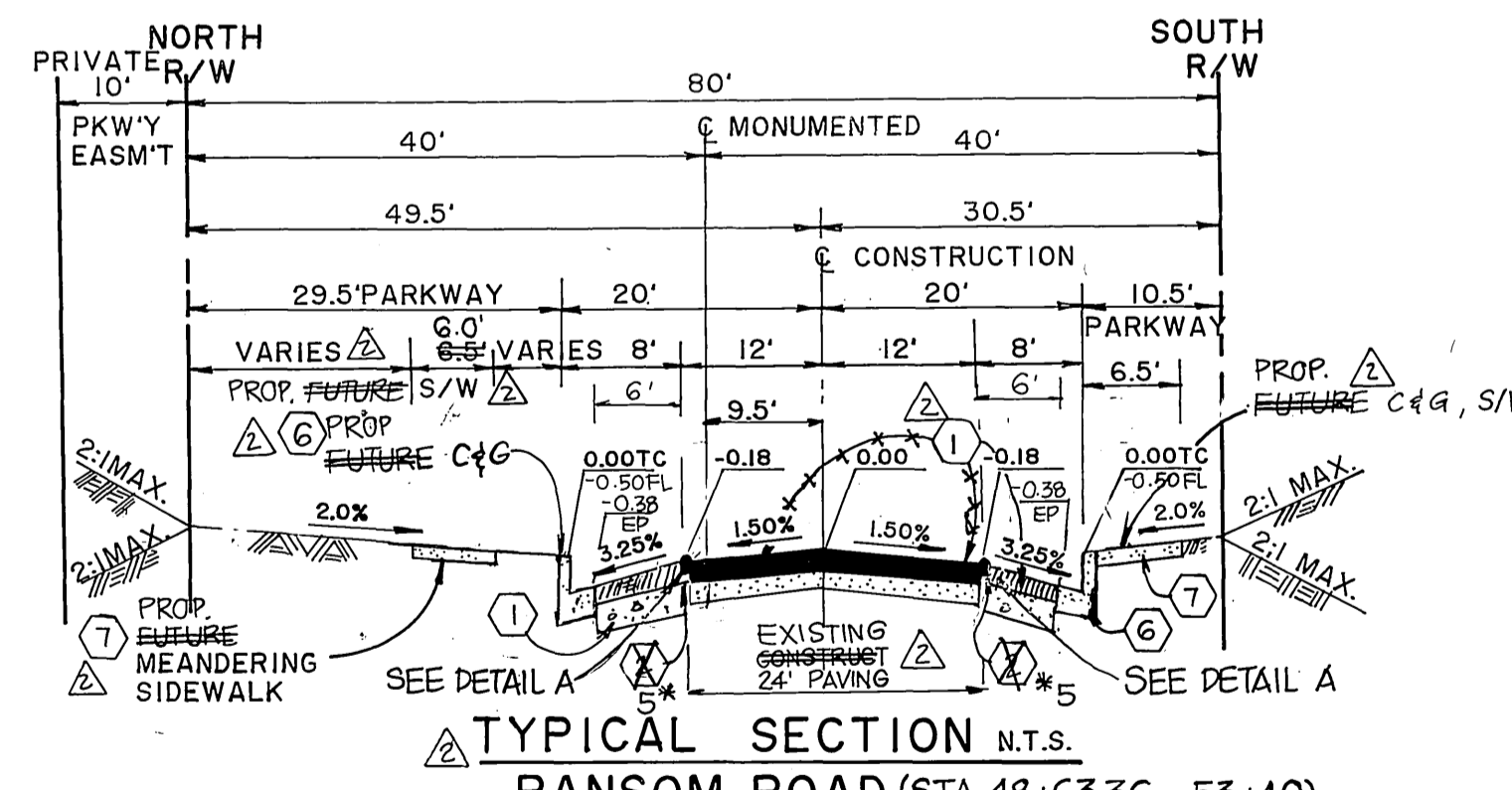
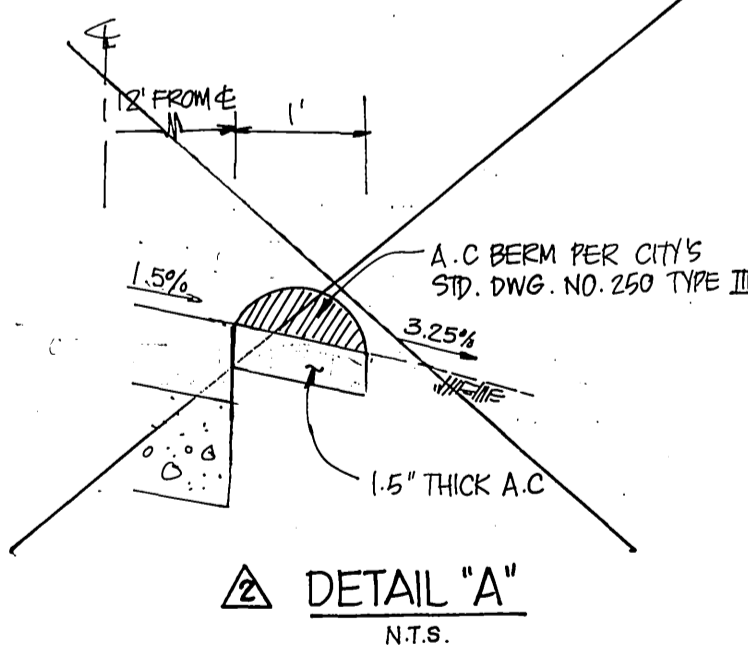
- ① CONSTRUCT A.C. OVER AGG. BASE PER TYP. SEC.
- ② CONSTRUCT A.C. BERM TYPE III PER CITY'S STD. DWG. NO. 250
- ③ REMOVE EXIST. BARRICADE.
- ④ INSTALL F-1 DELINEATORS
- ⑤ REMOVE EXIST. AC BERM.
- ⑥ CONSTRUCT 6" CURB & GUTTER (TYPE I) PER CITY'S STD. DWG. NO. 200.
- ⑦ CONSTRUCT SIDEWALK PER CITY'S STD. DWG. NO. 325.
- ⑧ REMOVE EXIST. DELINEATORS.
- ⑨ CONSTRUCT WHEELCHAIR RAMP PER CITY'S STD. DWG. NO. 304.

### GENERAL NOTES

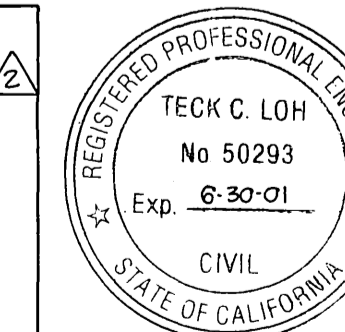
1. IT SHALL BE THE RESPONSIBILITY OF THE CONTRACTOR TO CLEAR THE RIGHT OF WAY IN ACCORDANCE WITH THE PROVISIONS OF LAW AS IT AFFECTS EACH UTILITY INCLUDING IRRIGATION LINES AND APPURTENANCES AND AT NO COST TO THE CITY.
2. CONSTRUCTION SHALL BE IN ACCORDANCE WITH THE CITY OF RIVERSIDE DEPT. OF PUBLIC WORKS, STANDARD DRAWINGS, STD. DWG. NO. 10, AND THE STANDARD SPECIFICATIONS FOR PUBLIC WORKS CONSTRUCTION, CURRENT EDITION.
3. TRIM EDGE OF EXISTING PAVEMENT WHERE NEW PAVEMENT JOINS TO A SMOOTH, STRAIGHT LINE. CONSTRUCT MATCH-UP PAVING AS SHOWN ON PLAN AND OVERLAY PAVING AS DIRECTED IN THE FIELD TO PRODUCE A SMOOTH SECTION.
4. THE DEVELOPER AND/OR CONTRACTOR SHALL CONTACT THE STREET DIVISION (351-6127) TO PICK UP ANY EXISTING STANDARD 180 BARRICADES THAT ARE BEING REMOVED. THE CITY'S INSPECTOR WILL MAKE THE FINAL DETERMINATION ON WHETHER A BARRICADE CAN BE RELOCATED.
5. THE SUBDIVIDER SHALL ARRANGE FOR A SOIL TEST TO BE MADE BY A SOILS ENGINEER AFTER THE STREETS HAVE BEEN PREPARED TO ROUGH GRADE AND PRIOR TO CURB AND GUTTER CONSTRUCTION. DEPTH OF BASE MATERIAL AND A.C. PAVING SHALL BE DETERMINED BY THE CITY OF RIVERSIDE DESIGN STANDARDS AND TEST PROCEDURES.
6. ALL FLAGGED ELEVATIONS SHALL BE STAKED IN THE FIELD BY THE PRIVATE ENGINEER.
7. THE PRIVATE ENGINEER SIGNING THESE PLANS IS RESPONSIBLE FOR ASSURING THE ACCURACY AND ACCEPTABILITY OF THE WORK HEREON. IN THE EVENT OF DISCREPANCIES ARISING DURING CONSTRUCTION, THE PRIVATE ENGINEER SHALL BE RESPONSIBLE FOR DETERMINING AN ACCEPTABLE SOLUTION AND REVISING THE PLANS FOR APPROVAL BY THE CITY.
8. THE DEVELOPER SHALL BE RESPONSIBLE FOR PRESERVING OR RE-ESTABLISHING AND REFERENCING SURVEY MONUMENTS DESTROYED, DISTURBED OR BURIED AS A RESULT OF CONSTRUCTION SHOWN HEREON.
9. ON ALL AREAS WITHIN PUBLIC RIGHT OF WAY WHERE THE FILL IS ONE (1) FOOT OR GREATER, A LETTER WILL BE REQUIRED FROM THE SOILS ENGINEER CERTIFYING THE COMPACTION OF THE FILL BELOW SUBGRADE, PRIOR TO ISSUANCE OF THE CONSTRUCTION PERMIT/CUT SHEETS.
10. ALL TRAFFIC SIGNS SHALL BE INSTALLED PRIOR TO OPENING THE STREETS TO TRAFFIC.
11. SEE "STREET LIGHTING PLANS" FOR QUANTITY AND LOCATION OF REQUIRED STREET LIGHTS.
12. NOTICE TO CONTRACTOR. THE EXISTENCE AND LOCATION OF ANY UNDERGROUND UTILITY PIPES OR STRUCTURES SHOWN ON THESE PLANS WERE OBTAINED BY A SEARCH OF THE AVAILABLE RECORDS. TO THE BEST OF OUR KNOWLEDGE THERE ARE NO EXISTING UTILITIES EXCEPT AS SHOWN ON THESE PLANS. THE CONTRACTOR IS REQUIRED TO TAKE PRECAUTIONARY MEASURES TO PROTECT THE UTILITY LINES SHOWN AND ANY OTHER LINES NOT OF RECORD OR NOT SHOWN ON THESE PLANS.
13. CONTRACTOR AGREES THAT HE SHALL ASSUME SOLE AND COMPLETE RESPONSIBILITY FOR JOB SITE CONDITIONS DURING THE COURSE OF CONSTRUCTION OF THIS PROJECT, INCLUDING SAFETY OF ALL PERSONS AND PROPERTY; THAT THIS REQUIREMENT SHALL APPLY CONTINUOUSLY AND NOT BE LIMITED TO NORMAL WORKING HOURS; AND THAT THE CONTRACTOR SHALL DEFEND, INDEMNIFY AND HOLD THE OWNER AND THE ENGINEER HARMLESS FROM ANY AND ALL LIABILITY, REAL OR ALLEGED, IN CONNECTION WITH THE PERFORMANCE OF WORK ON THIS PROJECT, EXCEPTING FOR LIABILITY ARISING FROM THE SOLE NEGLIGENCE OF THE OWNER OR ENGINEER.
14. ANY TRAFFIC CONTROL STRIPING OBLITERATED AND/OR BADLY WORN DURING CONSTRUCTION SHALL BE RESTORED BY THE CONTRACTOR WITHIN FIVE DAYS AFTER NOTIFICATION FROM THE CITY INSPECTORS.
15. THE CONTRACTOR SHALL CALL IN A LOCATION REQUEST TO UNDERGROUND SERVICE ALERT (USA), PHONE NO. 1-800-422-4133, TWO WORKING DAYS BEFORE DIGGING. NO CONSTRUCTION PERMIT WILL BE ISSUED BY THE PUBLIC WORKS DEPARTMENT INVOLVING EXCAVATION FOR UNDERGROUND FACILITIES UNLESS THE APPLICANT HAS BEEN PROVIDED AN INQUIRY IDENTIFICATION NUMBER BY U.S.A.
16. QUANTITIES SHOWN ARE FOR INFORMATION ONLY AND THE CITY OF RIVERSIDE IS NOT RESPONSIBLE FOR THEIR ACCURACY.

### INDEX MAP

SCALE 1"=300'



CITY OF RIVERSIDE WATER SYSTEM (VOID ONE YEAR FROM THIS DATE) REVIEWED BY: <i>Richard J. Duhon</i> 8/12/98 APPROVED BY: <i>A.J. Syed</i> 12/1/93	SOUTHERN CALIFORNIA GAS COMPANY APPROVED BY: <i>Reggie A. Rucker</i> 11-18-93	PACIFIC BELL TELEPHONE APPROVED BY: <i>Steve Bell</i> 12-2-93	CITY OF RIVERSIDE OVERHEAD & UNDERGROUND APPROVED BY: <i>William F. Meindl</i> 12/1/93	CANTY ENGINEERING GROUP, INC. 3120 CHICAGO AVE., SUITE 180 RIVERSIDE, CA 92507 TEL: 905-683-5234 FAX: 909-683-5301 APPROVED BY: <i>Teck C. Lo</i> 12/22/97 TECK C. LOH R.C.E. NO: 50293 EXP. DATE: 6-30-01
-----------------------------------------------------------------------------------------------------------------------------------------------------------	----------------------------------------------------------------------------------	------------------------------------------------------------------	-------------------------------------------------------------------------------------------	---------------------------------------------------------------------------------------------------------------------------------------------------------------------------------------------------------------------------

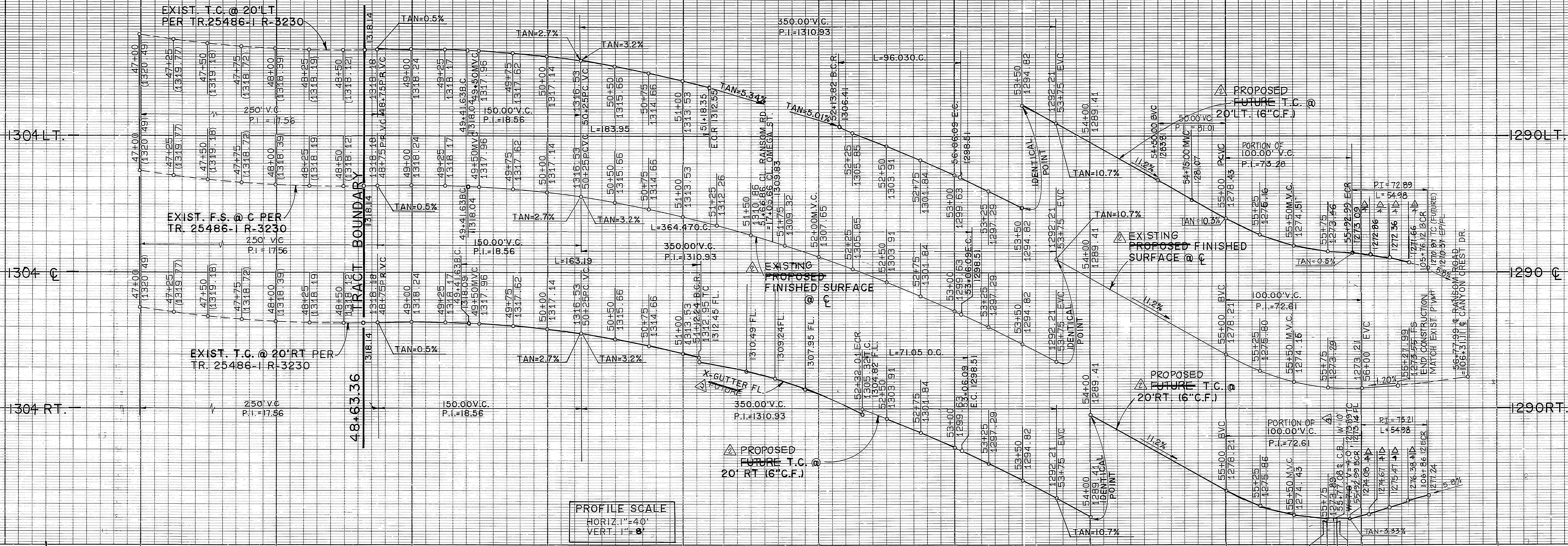


### GENERAL UNDERGROUND ELECTRICAL CONSTRUCTION NOTES:

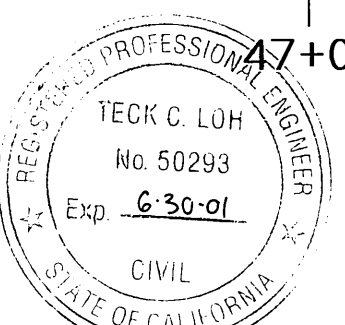
1. ALL FACILITIES INSTALLED BY THE DEVELOPER SHALL BE INSPECTED AND APPROVED BY THE DEPARTMENT CONSTRUCTION INSPECTOR (PHONE 782-5429). ANY CHANGES SHALL BE APPROVED BY THE DEPARTMENT PRIOR TO EXECUTION.
2. INSTALL ONE FOUR INCH ABS-DB CONDUIT STUBBED 1' BEYOND PAVING.
3. PROVIDE AND INSTALL CONDUITS, TRENCHING, BACKFILLING IN CONFORMANCE WITH THE DEPARTMENT STANDARD DRAWINGS UGS-100, 100.1, 142.

<b>Underground Service Alert</b> Call: TOLL FREE 1-800-422-4133 TWO WORKING DAYS BEFORE YOU DIG	<b>PRIVATE ENGINEERING NOTE</b> CONSTRUCTION CONTRACTOR AGREES THAT IN ACCORDANCE WITH GENERALLY ACCEPTED CONSTRUCTION PRACTICES CONSTRUCTION CONTRACTOR WILL BE REQUIRED TO ASSUME SOLE AND COMPLETE RESPONSIBILITY FOR JOB SITE CONDITIONS DURING THE COURSE OF CONSTRUCTION OF THE PROJECT, INCLUDING SAFETY OF ALL PERSONS AND PROPERTY. THAT THIS REQUIREMENT SHALL BE MADE TO APPLY CONTINUOUSLY AND NOT BE LIMITED TO NORMAL WORKING HOURS, AND CONSTRUCTION CONTRACTOR FURTHER AGREES TO DEFEND, INDEMNIFY AND HOLD DESIGN PROFESSIONAL HARMLESS FROM ANY AND ALL LIABILITY, REAL OR ALLEGED, IN CONNECTION WITH THE PERFORMANCE OF WORK ON THIS PROJECT EXCEPTING LIABILITY ARISING FROM THE SOLE NEGLIGENCE OF DESIGN PROFESSIONAL.	PREPARED UNDER THE DIRECTION OF: REGISTERED CIVIL ENGINEER NO. 46212 EXPIRATION DATE: 12/31/94 DATE: 11/22/93 APPROVED BY:	CITY BUSINESS TAX CERT. NO. 4994 EXP. DATE 12-31-91. <b>J.F. Davidson Associates, Inc.</b> ENGINEERING PLANNING SURVEYING ARCHITECTURE LANDSCAPE ARCHITECTURE 3880 Lemon Street, Suite 300 P.O. Box 493 Riverside, CA 92502 (714) 686-0844 FAX 714-686-5954 11200 S. ML Vernon Ave., Suite "D" Colton, CA 92324 (714) 825-1082 73-080 El Paseo, Suite 106 Palm Desert, CA 92260 (918) 348-5581 FAX 619-340-0529	CITY OF RIVERSIDE, CALIFORNIA DEPARTMENT OF PUBLIC WORKS CITY BUSINESS TAX CERT. NO. 4994 EXP. 12-31-93 APPROVED BY: <i>Teck C. Lo</i> 12/22/97 PRINCIPAL ENGINEER PARK DEPARTMENT TRAFFIC DIVISION CHIEF P.W. ENGR.	TRACT 25486-4 RANSOM ROAD EXTENSION STREET IMPROVEMENT PLANS <b>TITLE SHEET</b> R-3360 SHEET 1 OF 2 DATE: 12/1/93 FILE NO.: 9112317
-------------------------------------------------------------------------------------------------------	--------------------------------------------------------------------------------------------------------------------------------------------------------------------------------------------------------------------------------------------------------------------------------------------------------------------------------------------------------------------------------------------------------------------------------------------------------------------------------------------------------------------------------------------------------------------------------------------------------------------------------------------------------------------------------------------------------------------------------------------------	-------------------------------------------------------------------------------------------------------------------------------------	--------------------------------------------------------------------------------------------------------------------------------------------------------------------------------------------------------------------------------------------------------------------------------------------------------------------------------------------------------------------------------------------------------------------------------	----------------------------------------------------------------------------------------------------------------------------------------------------------------------------------------------------------------------------------------	-------------------------------------------------------------------------------------------------------------------------------------------------------

INDEXED 1-25-94 LHM

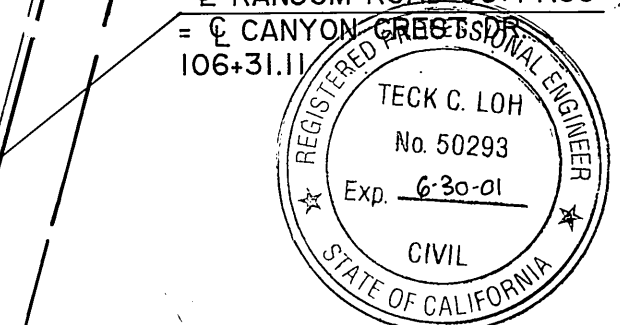
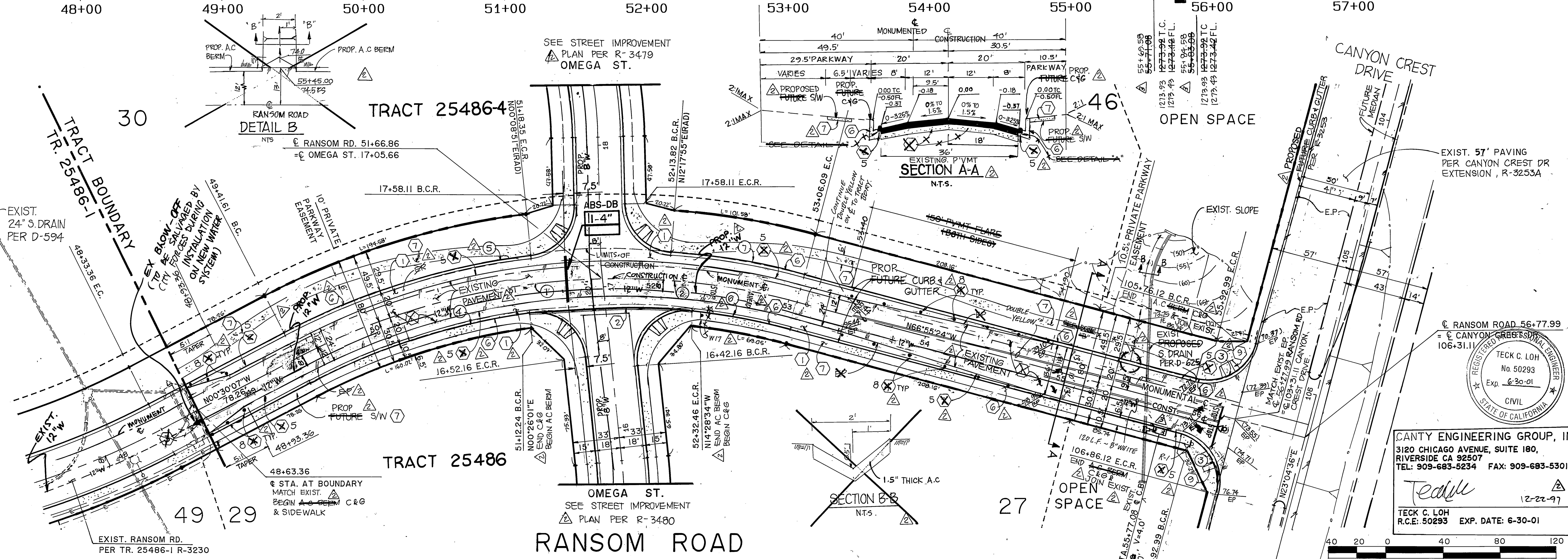


CANTY ENGINEERING GROUP, INC.  
 2020 IOWA AVENUE, SUITE 102  
 RIVERSIDE, CA 92507  
 TEL: (909) 683-5234 FAX: (909) 683-5301  
 Teck C. Loh 5/5/99  
 No. 50293  
 REGISTERED CIVIL ENGINEER No. 50293  
 EXPIRATION DATE: 6-30-01



NO.	Δ	R	L	T
1	26° 18' 41"	490.50'	225.25'	114.64
2	16° 15' 48"	490.50'	139.23'	70.03'
3	90° 00' 00"	35.00'	54.98'	35.00'
4	12° 55' 53"	470.50'	163.67'	82.67'
5	20° 38' 43"	510.50'	183.95'	92.98'
6	08° 36' 03"	470.50'	70.63'	35.38'
7	10° 46' 41"	510.50'	96.03'	48.16'

CITY OF RIVERSIDE  
 WATER SYSTEM  
 (VOID ONE YEAR FROM THIS DATE)  
 APPROVED: A. J. Spald  
 DATE: 10/2/93



CANTY ENGINEERING GROUP, INC.  
 3180 CHICAGO AVENUE, SUITE 180,  
 RIVERSIDE, CA 92507  
 TEL: 909-683-5234 FAX: 909-683-5301  
 Teck C. Loh 12-22-97  
 R.C.E. 50293 EXP. DATE: 6-30-01

SCALE IN FEET  
 SEE SHEET NO. 1 FOR GENERAL & CONSTRUCTION NOTES

**Underground Service Alert**  
 Call: TOLL FREE  
 1-800-422-4133  
 TWO WORKING DAYS BEFORE YOU DIG

**PRIVATE ENGINEERING NOTE**  
 CONSTRUCTION CONTRACTOR AGREES THAT IN ACCORDANCE WITH GENERALLY ACCEPTED CONSTRUCTION PRACTICES, CONSTRUCTION CONTRACTOR WILL BE REQUIRED TO ASSUME SOLE AND COMPLETE RESPONSIBILITY FOR JOB SITE CONDITIONS DURING THE COURSE OF CONSTRUCTION OF THE PROJECT, INCLUDING SAFETY OF ALL PERSONS AND PROPERTY. THAT THIS REQUIREMENT SHALL BE MADE TO APPLY CONTINUOUSLY AND NOT BE LIMITED TO NORMAL WORKING HOURS AND CONSTRUCTION CONTRACTOR FURTHER AGREES TO DEFEND, INDEMNIFY AND HOLD DESIGN PROFESSIONAL HARMLESS FROM ANY AND ALL LIABILITY, REAL OR ALLEGED, IN CONNECTION WITH THE PERFORMANCE OF WORK ON THIS PROJECT, EXCEPTING LIABILITY ARISING FROM THE SOLE NEGLIGENCE OF DESIGN PROFESSIONAL.

PREPARED UNDER THE DIRECTION OF:  
 REGISTERED CIVIL ENGINEER No. 46212  
 EXPIRATION DATE: 12/31/94 DATE: 11/22/93  
 APPROVED BY:

**J.F. Davidson Associates, Inc.**  
 ENGINEERING PLANNING SURVEYING ARCHITECTURE LANDSCAPE ARCHITECTURE  
 3880 Lemon Street, Suite 300 P.O. Box 463 Riverside, CA 92502 (714) 986-9544 FAX 714-986-9544  
 11200 S. Mt. Vernon Ave., Suite "D" Palm Desert, CA 92260 (818) 346-6891 FAX 818-346-0929  
 SCALE: AS SHOWN  
 DATE: JULY, 1991  
 BENCH MARK: 60" P.K. NAIL & TAG IN BASE OF LIGHT STANDARD IN MEDIAN STRIP OF COUNTRY CLUB DRIVE 60' + WEST OF C.L. CANYON CREST DRIVE. ELEV. = 1068.06

DESIGNED BY: T.C.L. DRAWN BY: D.P.P. CHECKED BY: J.D.S.

CITY OF RIVERSIDE, CALIFORNIA  
 DEPARTMENT OF PUBLIC WORKS  
 CITY BUSINESS TAX CERT. NO. 4994 BY EXP. 12-31-93  
 APPROVED BY: [Signature]  
 DATE: 12/6/93

**TRACT 25486-4**  
 RANSOM ROAD EXTENSION  
 STREET IMPROVEMENT PLANS  
 RANSOM ROAD  
 STA. 48+63.36 TO STA. 56+77.99  
 FOR: CHRISTIAN BERGMAN & ASSOCIATES

PROJECT NO. 9112517  
 R-3360  
 SHEET 2 OF 2  
 FILE NO.: 9112517

INDEXED 1-25-94 LHM