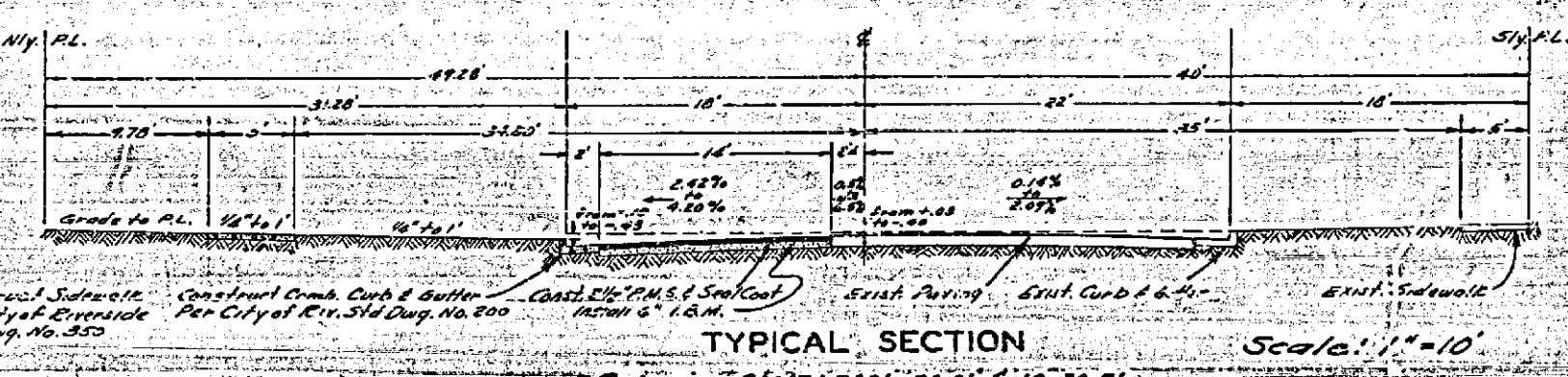
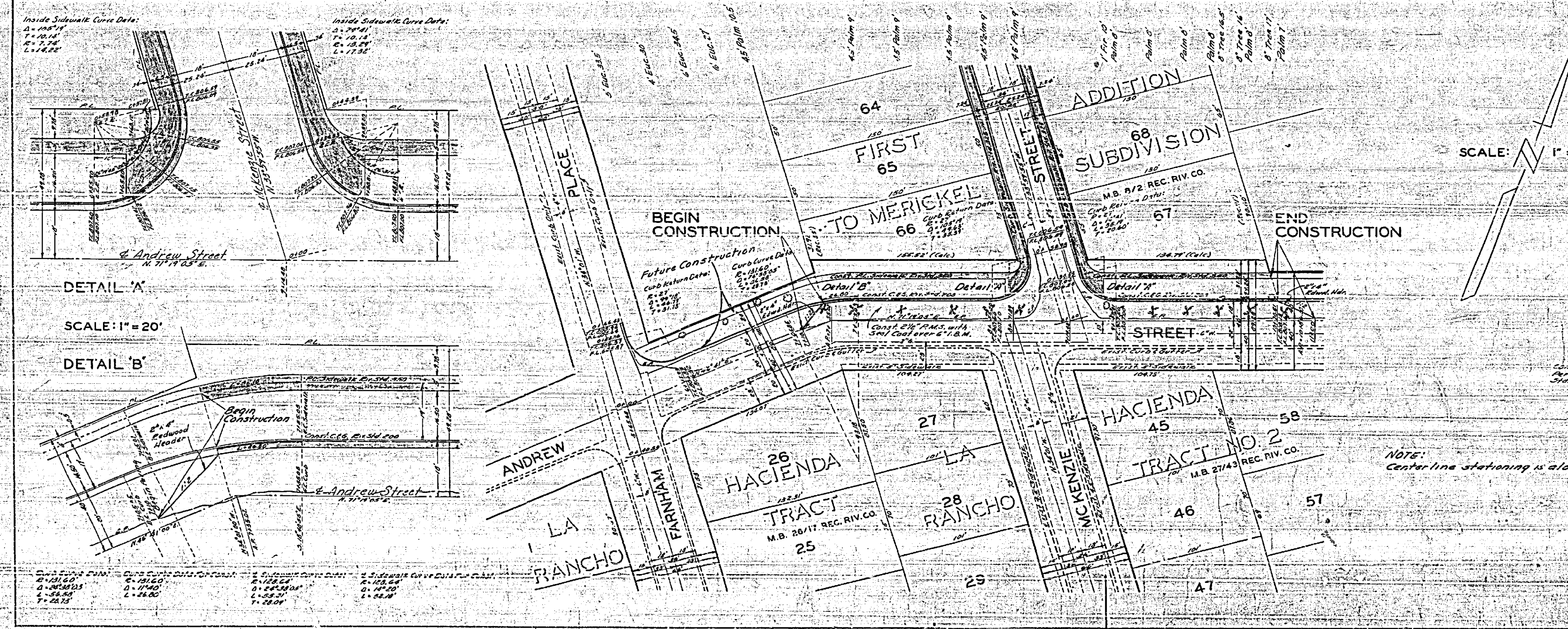


PROFILE

DATE	
BY	
CHECKED BY	
APPROVED BY	



PLAN

DATE	
BY	
CHECKED BY	
APPROVED BY	

REVISIONS		CITY OF RIVERSIDE - CALIFORNIA DEPARTMENT OF PUBLIC WORKS
MARK	DATE	
		ANDREW ST CURB & GUTTER N. SIDE, 150' ELY. & WLY. OF MC KENZIE ST.

DESIGNED BY	CHECKED BY	APPROVED BY
DRAWN BY		
RECOMMENDED BY	ASSISTANT CITY ENGINEER	DIRECTOR OF PUBLIC WORKS
DATE: July 3, 1919		R-339