

**BENCHMARK**  
 18-B, PK NAIL & CITY ENGINEER  
 TAG IN CONCRETE BASE OF LIGHT  
 STANDARD ON THE SW CORNER OF  
 IOWA AVENUE AND SPRUCE STREET.  
 ELEVATION 961.275

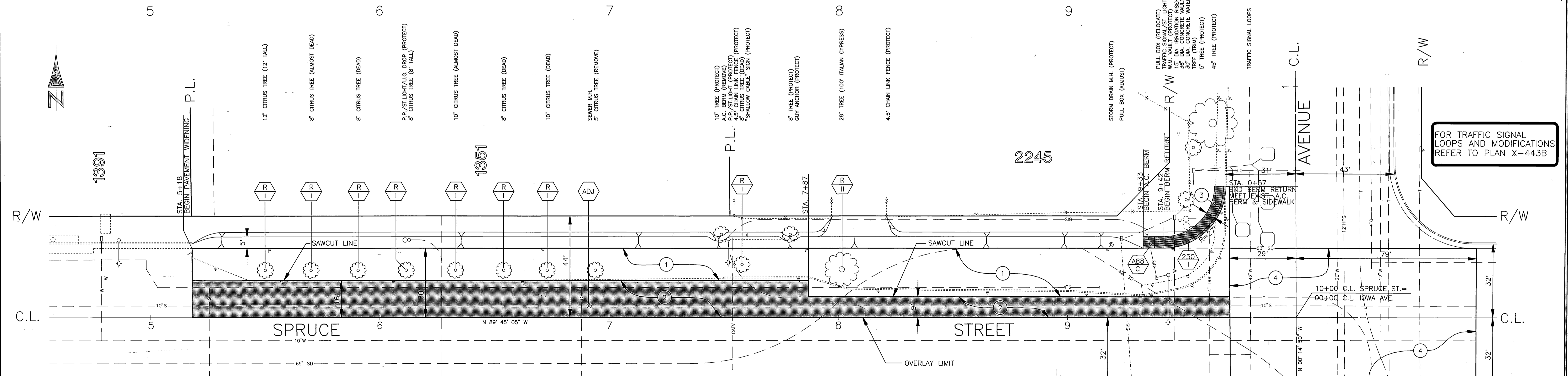
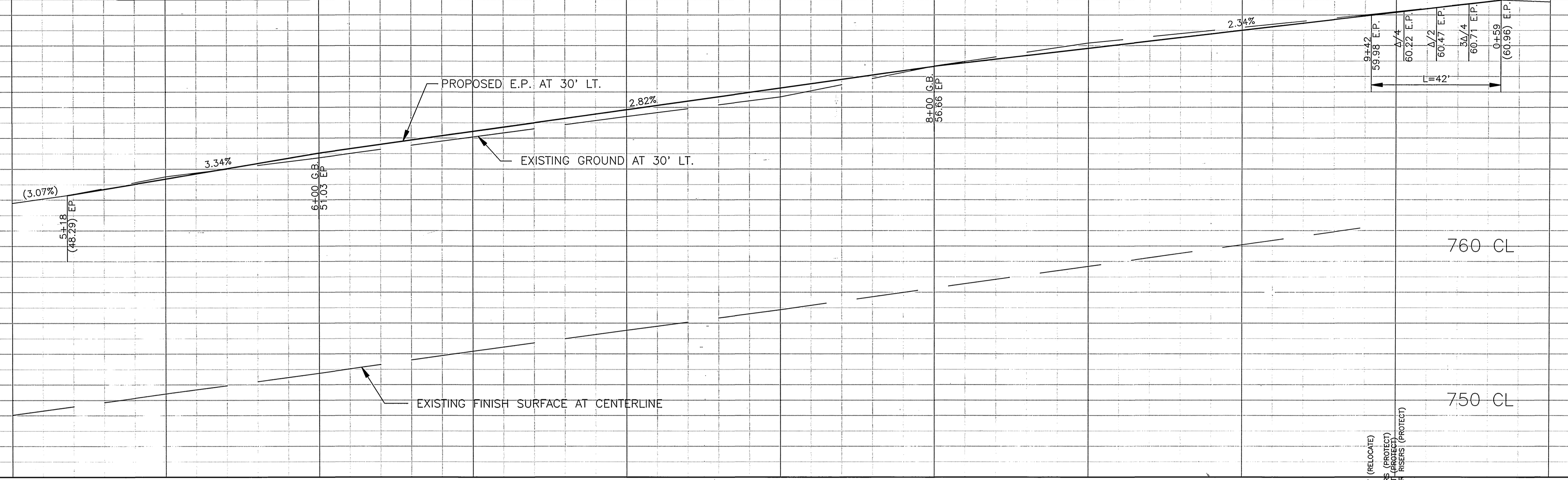
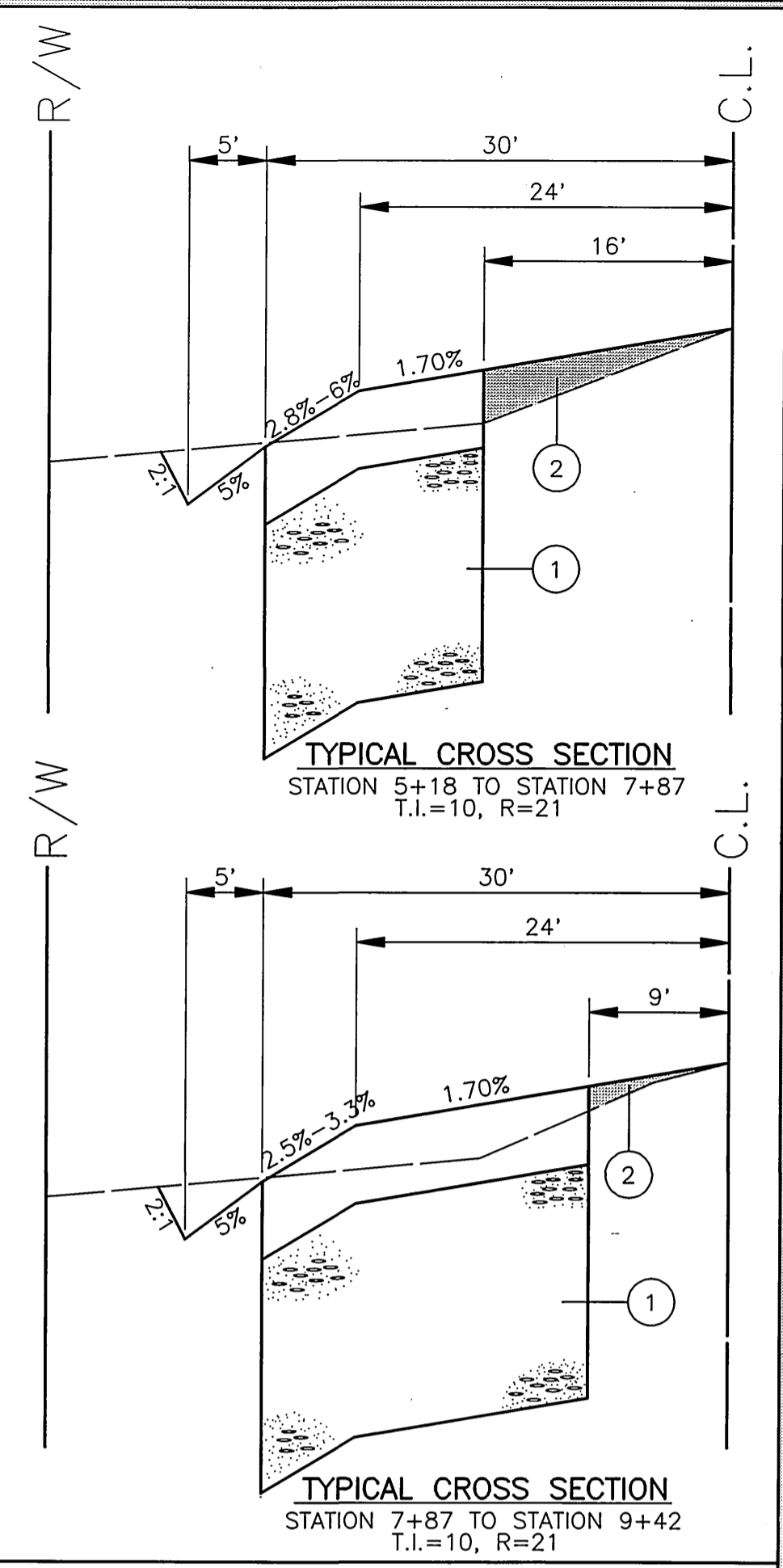
760 LT

750 LT

740 LT

760 CL

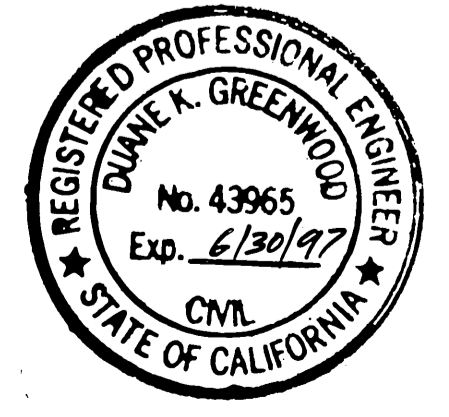
750 CL



FOR TRAFFIC SIGNAL  
 LOOPS AND MODIFICATIONS  
 REFER TO PLAN X-443B

**GENERAL AND CONSTRUCTION NOTES:**

- NUMBERS ABOVE 100 IN HEXAGON ON THE PLAN REFER TO THE RESPECTIVE STANDARD DRAWING AND SHALL BE CONSTRUCTED ACCORDINGLY.
- R** REMOVE TREE, CLASS AS SHOWN.
- ADJ** ADJUST SEWER MANHOLE FRAME AND COVER TO GRADE.
- 1** CONSTRUCT 6" A.C. PAVEMENT OVER 18" CRUSHED AGGREGATE BASE.
- 2** CONSTRUCT VARIABLE THICKNESS A.C. OVERLAY.
- 3** CONSTRUCT 4" THICK A.C. SIDEWALK OVER NATIVE SOIL.
- 4** COLD MILL APPROXIMATELY 2 INCHES OF EXISTING A.C. PAVEMENT AND OVERLAY WITH 2" A.C. PAVEMENT. GRADES WILL BE SET IN THE FIELD.
- 5** SAWCUT EXISTING CURB AND SIDEWALK AND CONSTRUCT WHEELCHAIR RAMP PER STANDARD DRAWING 304.

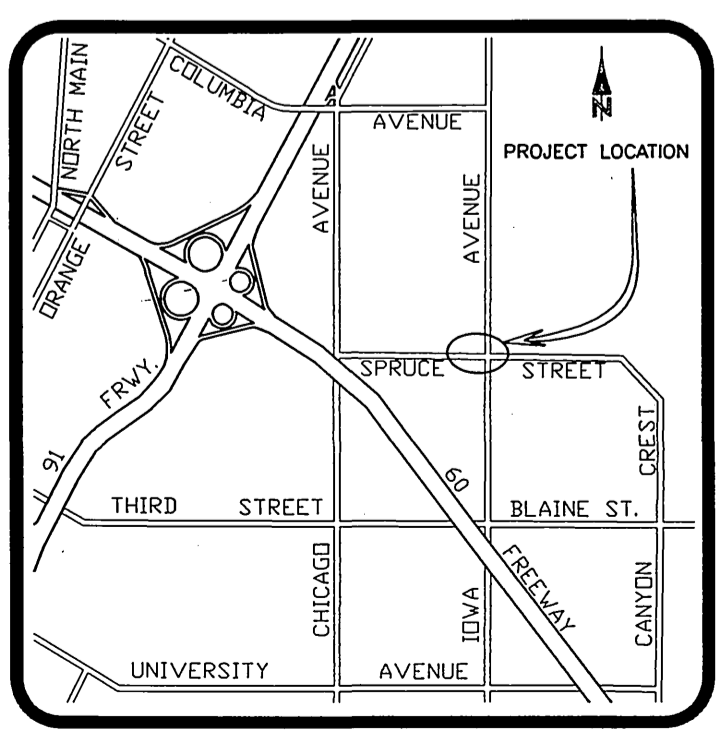


**ENGINEER IN RESPONSIBLE CHARGE**  
 Duane K. Greenwood  
 R.C.E. No. 43965 EXPIRES 6/30/97  
 DATE 3/23/95

MARK	REVISIONS	APPR	DATE

CITY OF RIVERSIDE, CALIFORNIA  
 PUBLIC WORKS DEPARTMENT  
 APPROVED BY: [Signature] DATE: 3/28/95  
 DEPUTY P.W. DIRECTOR  
 PRINCIPAL ENGINEER  
 TRAFFIC DIVISION  
 SURVEYOR  
 STREET DIVISION

**SPRUCE STREET WIDENING**  
 FROM IOWA AVENUE TO 500' W'LY  
 ACCOUNT NUMBER: 432-541500-440302-30349  
**R-3392**  
 SHEET 1 OF 1  
 FILE NO.: PC 3764-S  
 HORIZ. SCALE: 1" = 20' VERT. SCALE: 1" = 4'



LOCATION PLAN

INDEXED 3-3-95 4H