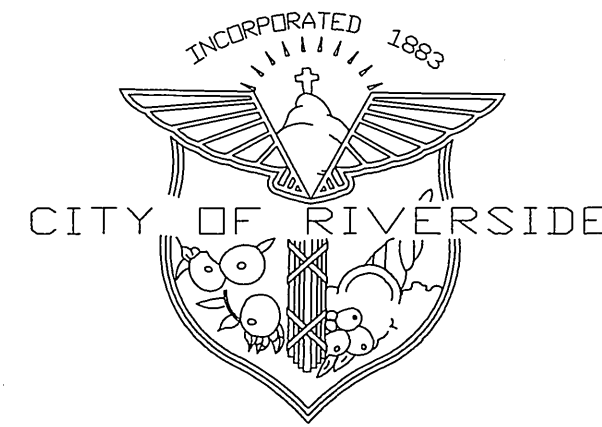


# RIVERSIDE



# CALIFORNIA

## PUBLIC WORKS DEPARTMENT

# UNIVERSITY AVENUE WIDENING

AT THE 60/215 FREEWAY

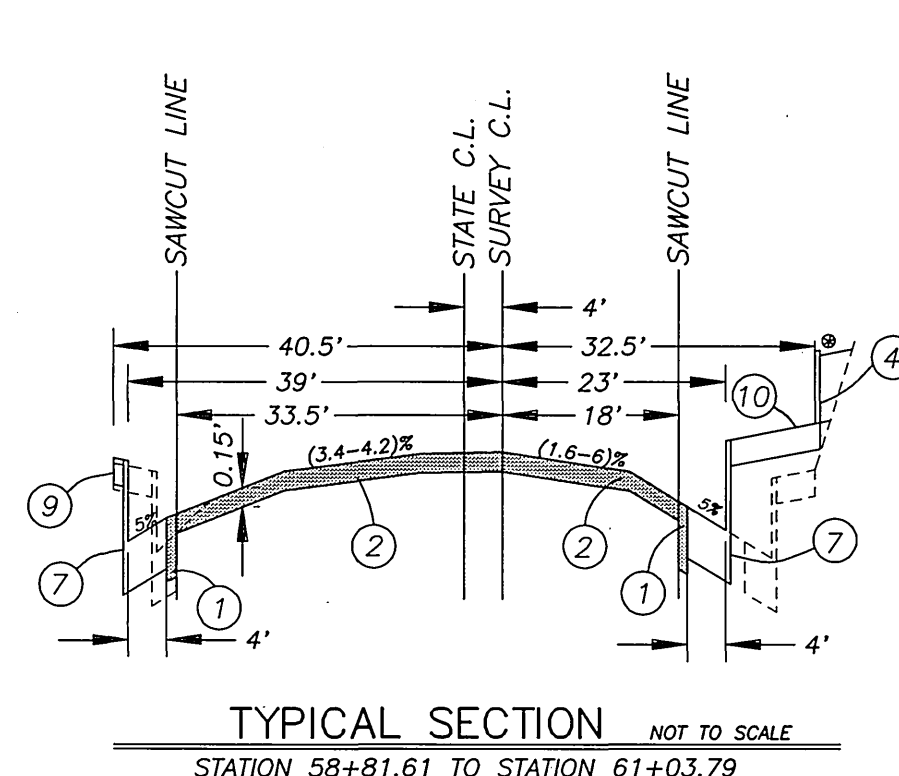
FEDERAL AID PROJECT NUMBER STPLE-5058(040)

### GENERAL NOTES

- 1) THE CONTRACTOR SHALL APPLY AND OBTAIN AN ENCROACHMENT PERMIT FROM CALTRANS BEFORE BEGINNING OF ANY WORK WITHIN STATE RIGHT-OF-WAY.
- 2) ALL WORK WITHIN THE STATE RIGHT-OF-WAY SHALL CONFORM TO THE LATEST STATE STANDARD PLANS & SPECIFICATIONS OR AS DIRECTED BY THE STATE'S REPRESENTATIVE. STANDARDS OTHER THAN STATE MUST BE PRE-APPROVED AND JUSTIFIED.
- 3) NO EQUIPMENT OR MATERIALS MAY BE STORED ON THE STATE RIGHT-OF-WAY.
- 4) ALL DISTURBED AREAS IN THE STATE RIGHT-OF-WAY MUST BE TREATED FOR EROSION CONTROL (HYDROSEEDING OR EQUIVALENT, OR AS DIRECTED BY THE STATE'S REPRESENTATIVE). THE RESPONSIBILITY FOR MAINTAINING EROSION CONTROL WILL NOT BE RELEASED UNTIL THE SEEDING IS WELL ESTABLISHED. THE CONTRACTOR WILL BE RESPONSIBLE FOR THE COST OF CALTRANS CLEANING ANY DRAINAGE STRUCTURES/CHANNELS WHICH HAVE BECOME CLUTTERED WITH DEBRIS AND/OR SILT AS A RESULT OF, OR CAUSED BY, THE CONSTRUCTION PROJECT.
- 5) THE CONTRACTOR SHALL BE RESPONSIBLE FOR ENSURING THAT ANY STATE DRAINAGE FACILITY WHICH IS CONNECTED TO OR DIRECTLY AFFECTED BY THE CONTRACTOR'S OPERATION SHALL BE OPERATIONAL PRIOR TO FINAL ACCEPTANCE OF THE PERMIT WORK BY THE STATE. ADEQUATE CLEAN OUTS AND ACCESS OPENINGS SHALL BE PROVIDED IN ANY CONSTRUCTION WITHIN THE STATE'S RIGHT-OF-WAY FOR FUTURE MAINTENANCE AND REPAIR WORK AS NEEDED. THIS WORK SHALL BE FURNISHED AT NO COST TO THE STATE.
- 6) NO FREEWAY RAMP OR FREEWAY LANES MAY BE CLOSED OR OBSTRUCTED AT ANYTIME UNLESS SPECIFICALLY ALLOWED PER THE ENCROACHMENT PERMIT AND/OR AS DIRECTED BY THE STATE'S REPRESENTATIVE.
- 7) ALL FENCE RELOCATED TO FACILITATE THE CONSTRUCTION OF THIS PROJECT INSIDE THE STATE RIGHT-OF-WAY SHALL BE REPLACED WITH TYPE CL-6 FENCE AS SHOWN IN THE STATE'S STANDARD PLANS.
- 8) THE STRUCTURAL SECTION SHOWN WITHIN THE STATE RIGHT-OF-WAY IS FOR ESTIMATING PURPOSES ONLY. THE ACTUAL SECTION WILL BE DESIGNED BY A SOIL ENGINEER AFTER NATIVE SOIL TESTING HAS BEEN COMPLETED. A TRAFFIC INDEX (TI) OF 10 SHALL BE USED IN THE DESIGN OF THE TRAVELED WAY, AND A (TI) OF 8 SHALL BE USED FOR THE SHOULDER DESIGN. THE LABORATORY REPORTS AND THE DESIGN CALCULATIONS SHALL BE SUBMITTED TO THE STATE'S REPRESENTATIVE FOR APPROVAL PRIOR TO CONSTRUCTION OF THE STRUCTURAL SECTION.
- 9) WHERE SURVEY MONUMENTS EXIST, SUCH MONUMENTS SHALL BE PROTECTED OR SHALL BE REFERENCED AND RESET PURSUANT TO BUSINESS AND PROFESSIONS CODE, SECTIONS 8700 TO 8805 (LAND SURVEYOR'S ACT).
- 10) ALL SIGNING, STRIPING AND PAVEMENT MARKINGS WITHIN STATE RIGHT-OF-WAY SHALL BE IN CONFORMANCE WITH THE CURRENT EDITION OF THE TRAFFIC MANUAL, PUBLISHED BY THE STATE OF CALIFORNIA, DEPARTMENT OF TRANSPORTATION, AND THE SPECIAL PROVISIONS. ALL PAVEMENT MARKINGS SHALL BE THERMOPLASTIC UNLESS OTHERWISE NOTED ON THE PLANS.
- 11) ALL STATE DRAINAGE STRUCTURES / CHANNELS MUST FIRST BE COMPLETELY CLEANED OF DEBRIS AND/OR SILT BY THE CONTRACTOR PRIOR TO MAKING THE CONNECTION.
- 12) ALL CONFLICTING STRIPING AND PAVEMENT MARKINGS NOT SHOWN ON THE PLANS SHALL BE REMOVED FROM THE PAVEMENT BY SANDBLASTING BY THE CONTRACTOR.
- 13) WHERE REQUIRED, THE PAVEMENT MUST BE SAW-CUT AT LANE LINE OR A MINIMUM 2 FEET FROM THE EXISTING EDGE OF PAVEMENT. THE SAW-CUTS MUST BE PERPENDICULAR TO, PARALLEL, OR CONCENTRIC WITH THE STATE HIGHWAY CENTERLINE.
- 14) ALL SIGNS, ROADSIDE MARKERS, ELECTROLIERS, ETC., SHALL BE PROTECTED AND/OR REPLACED IN-KIND ACCORDING TO THE CURRENT STATE STANDARD PLANS AND THE CURRENT TRAFFIC MANUAL, AT NO COST TO THE STATE.

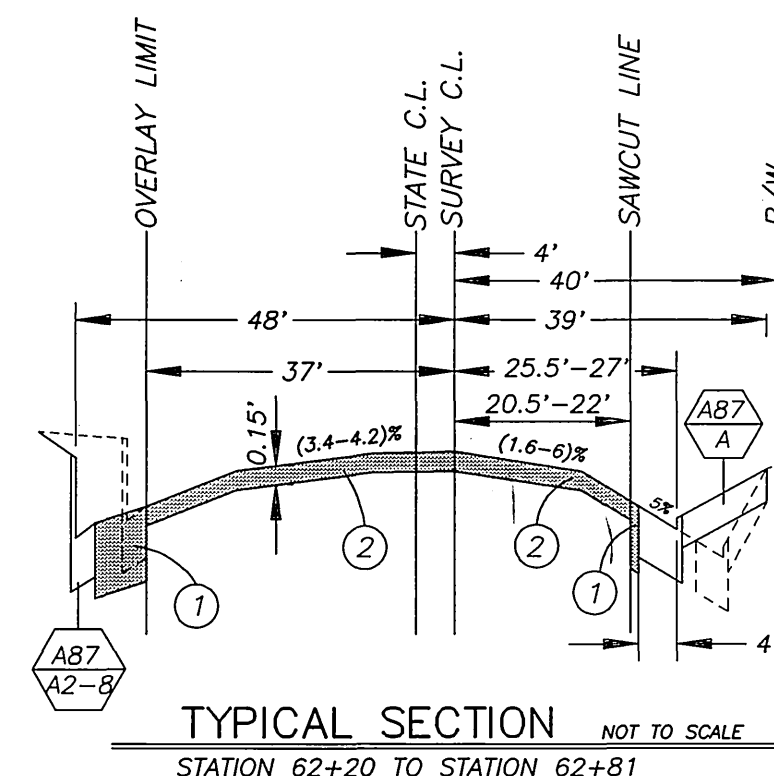
### CONSTRUCTION NOTES

- NUMBERS IN A HEXAGON ON THE PLAN REFER TO THE RESPECTIVE STATE STANDARD PLAN AND SHALL BE CONSTRUCTED ACCORDINGLY, UNLESS MODIFICATIONS ARE NOTED ON THE PLAN. ANY NUMBER SHOWN BELOW THE STANDARD DRAWING NUMBER INDICATES THE
- REMOVE CLASS I TREE.
- CONSTRUCT 0.83" ASPHALT CONCRETE PAVEMENT OVER COMPACTED NATIVE SOIL.
- GRIND 0.15" FROM EXISTING ASPHALT CONCRETE, CRACK SEAL, AND CONSTRUCT 0.15" THICK ASPHALT CONCRETE OVERLAY.
- REMOVE AND REPLACE CHAIN LINK FENCE PER STANDARD PLAN A85. FENCE SHALL BE RELOCATED DURING, AND REPLACED AFTER, SIDEWALK CONSTRUCTION.
- CONSTRUCT 6" THICK BY 12" HIGH PCC CURB MONOLITHIC WITH THE SIDEWALK AS SHOWN ON THE TYPICAL SECTION.
- TRIM TREE ROOTS TO A DEPTH OF 3' AS NECESSARY FOR THE CONSTRUCTION OF PROPOSED IMPROVEMENTS.
- CONSTRUCT 16" STAMPED CONCRETE BANDING PER DETAILS ON SHEET 3 OF 3.
- CONSTRUCT 8" PCC CURB WITH 48" GUTTER PER DETAIL ON SHEET 3 OF 3.
- CONSTRUCT EXPANSION JOINT PER DETAIL ON SHEET 3 OF 3.
- CONSTRUCT 1.5" WIDE BY 4" THICK PCC SLAB.
- CONSTRUCT PCC SIDEWALK PER DETAIL ON SHEET 3 OF 3.
- CONSTRUCT MODIFIED CATCH BASIN TYPE GOL PER STANDARD PLAN D72 WITH L=15' & H=3'. GUTTER DEPRESSION TYPE GOL PER STANDARD PLAN D78 WITH W=4', D=2". GRATE TYPE 24-13 PER STANDARD PLAN D77B. USE 12" RCP OUTLET PIPE AND CONNECT TO EXISTING 48" RCP PER STANDARD PLAN D93A.
- CONSTRUCT 6" PVC (SCHEDULE 40) HEADER AND INTERCEPT, CONNECT, AND ADJUST EXISTING 4" CURB DRAINS PER DETAIL ON SHEET 3 OF 3. RESTORE DISTURBED LANDSCAPING AS REQUIRED.



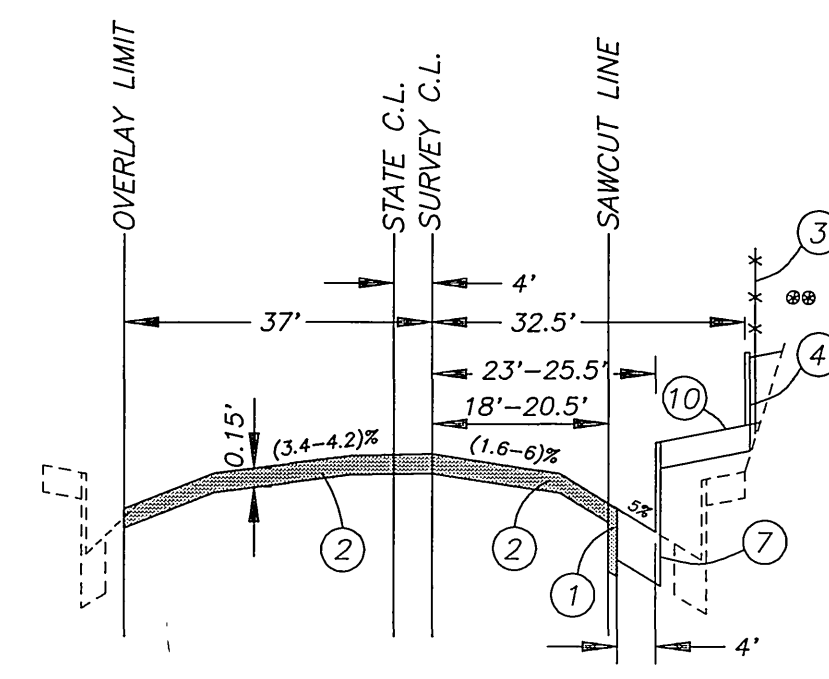
TYPICAL SECTION NOT TO SCALE  
STATION 58+81.61 TO STATION 61+03.79

- STATION 58+81.61 TO STATION 59+51 ONLY
- 0.83" AC OVER COMPACTED NATIVE
- GRIND 0.15" AC AND OVERLAY 0.15" AC



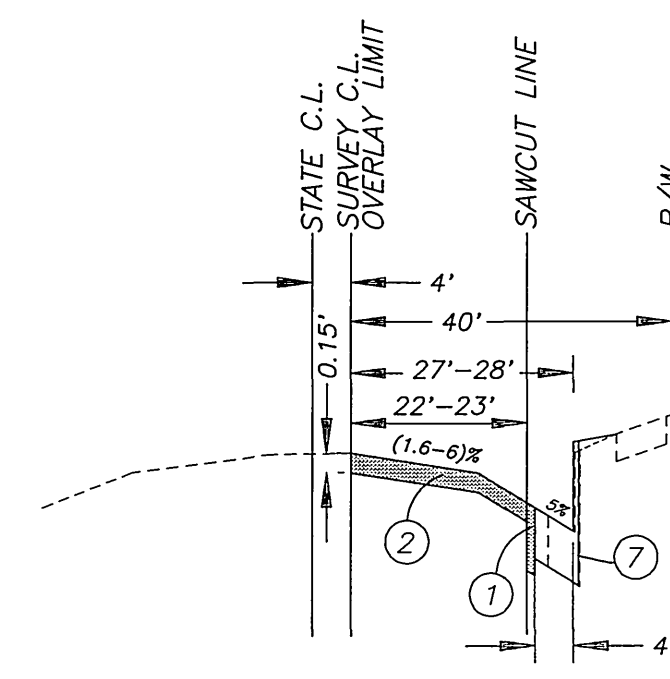
TYPICAL SECTION NOT TO SCALE  
STATION 62+20 TO STATION 62+81

- 0.83" AC OVER COMPACTED NATIVE
- GRIND 0.15" AC AND OVERLAY 0.15" AC



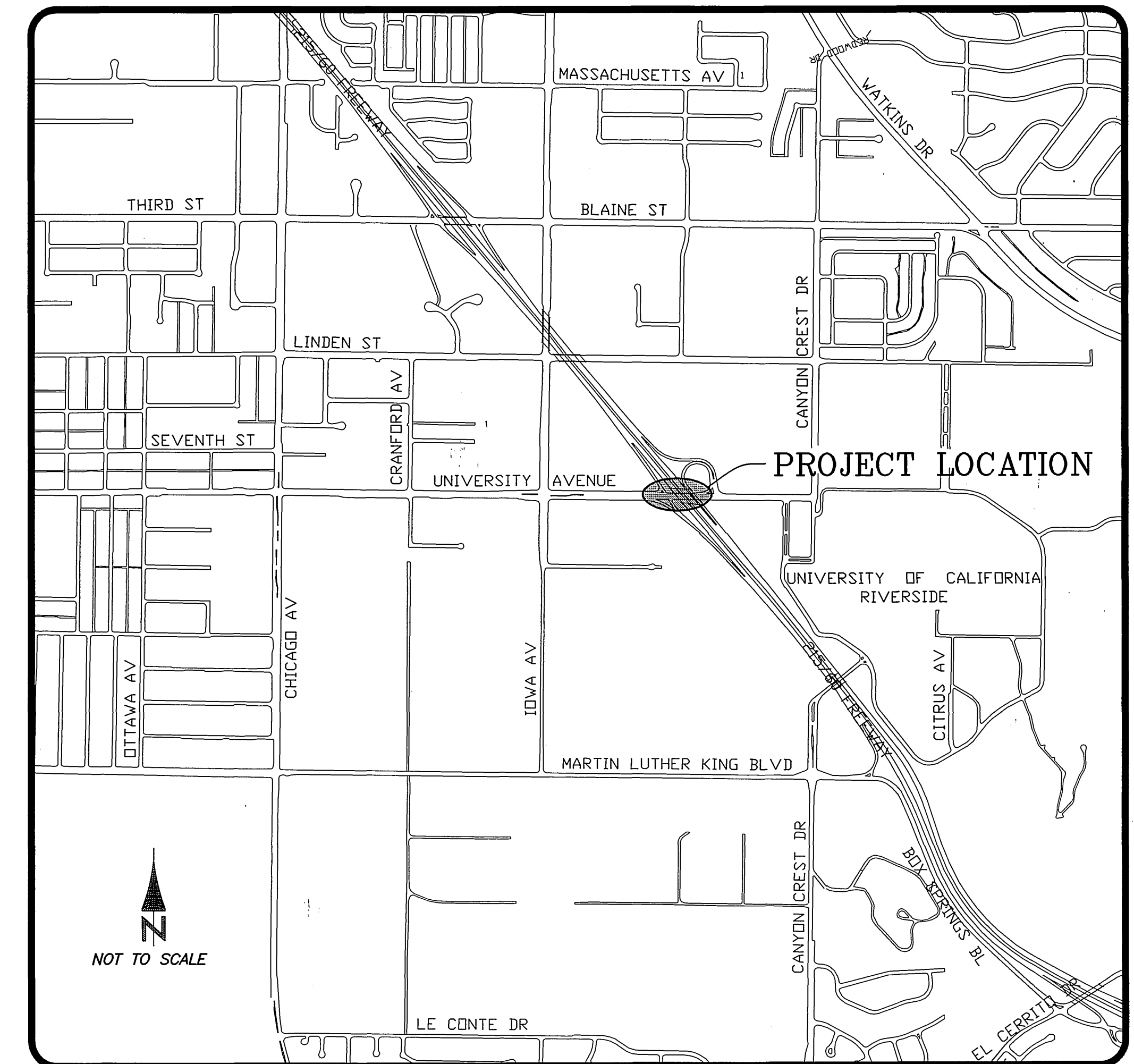
TYPICAL SECTION NOT TO SCALE  
STATION 61+03.79 TO STATION 62+20

- STATION 61+40 TO STATION 62+20 ONLY
- 0.83" AC OVER COMPACTED NATIVE
- GRIND 0.15" AC AND OVERLAY 0.15" AC



TYPICAL SECTION NOT TO SCALE  
STATION 62+81 TO STATION 63+70

- 0.83" AC OVER COMPACTED NATIVE
- GRIND 0.15" AC AND OVERLAY 0.15" AC



VICINITY MAP

### CONSTRUCTION QUANTITIES (PLAN R-3447)

CONSTRUCTION ITEM	QUANTITY	UNIT
EARTHWORK (FILL)	91	C.Y.
A.C. PAVEMENT	420	TONS
A.C. COLD MILLING	4,092	S.Y.
CRACK FILL	1,000	L.F.
TYPE A2-8 CURB AND GUTTER	83	L.F.
CURB AND 48" GUTTER	775	L.F.
TYPE A1-8 CURB	68	L.F.
6"x12" PCC CURB	168	L.F.
PCC DRIVEWAY	390	S.F.
PCC SIDEWALK	3,737	S.F.
16" WIDE STAMPED CONCRETE BANDING	87	L.F.
REMOVE TREE	1	EA.
REPLACE 6" CHAIN LINK FENCE	88	L.F.
6" SCHEDULE 40 PVC DRAIN PIPE	268	L.F.
4" PVC RISER CLEANOUT WITH COVER	6	EA.
CATCH BASIN TYPE OGL (L=15')	1	EA.
ADJUST SEWER MANHOLE	1	EA.
RELOCATE TRAFFIC SIGN	1	EA.
BRIDGE LIGHTING INSTALLATION	---	L.S.

### SHEET INDEX

- SHEET 1 - TITLE SHEET.
- SHEET 2 - STREET IMPROVEMENT PLAN AND PROFILE.
- SHEET 3 - LUMINAIRE LOCATION PLAN AND MISCELLANEOUS DETAILS.

ENGINEER IN RESPONSIBLE CHARGE  
 RICHARD D. McGRATH  
 R.C.E. No. 31952 Expires 12/31/2000  
 DATE 7/14/97

REVISIONS

NO.	DESCRIPTION	DATE

CITY OF RIVERSIDE, CALIFORNIA  
 PUBLIC WORKS DEPARTMENT

APPROVED BY: [Signature]  
 DEPUTY P.W. DIRECTOR  
 DATE: 7/14/97

UNIVERSITY AVENUE  
 WIDENING  
 AT THE 60/215 FREEWAY

TITLE SHEET

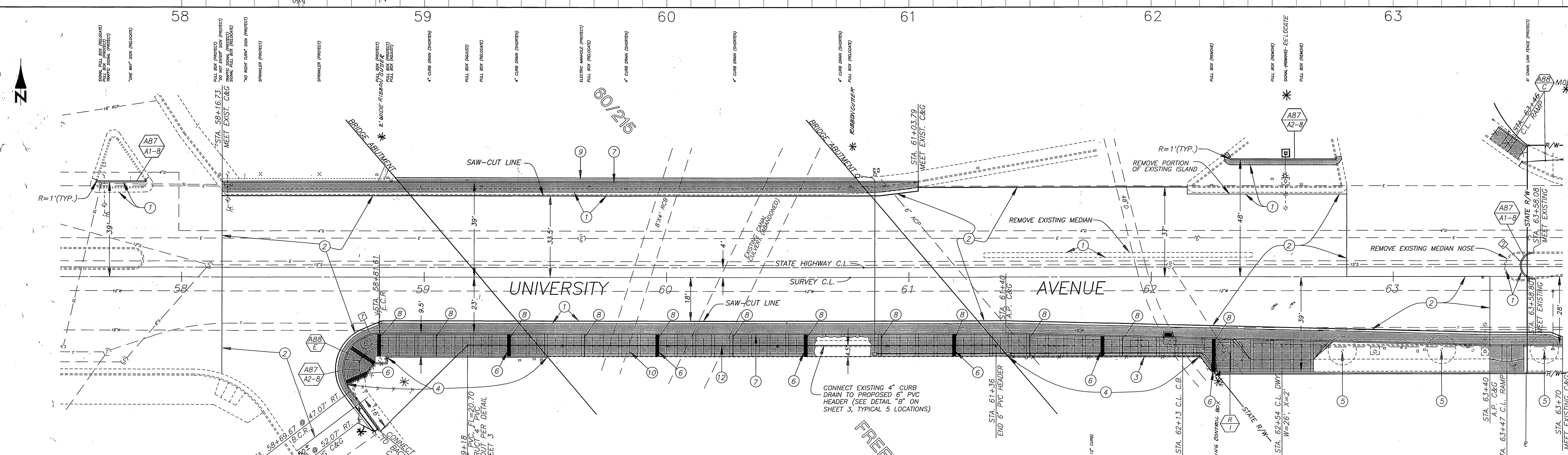
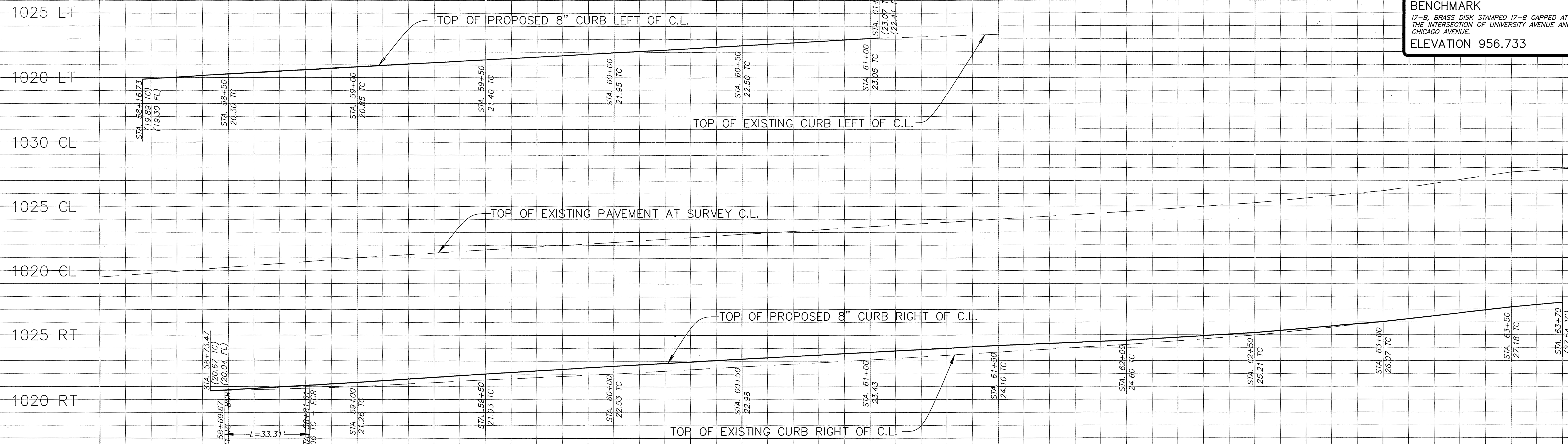
ACCOUNT NUMBER  
 430-541500-440125-90192

R-3447  
 SHEET 1 OF 3

Caltrans Permit No.  
 08-97-N-MC-0184

AS BUILT 6/4/98  
 INDEXED 3/98

**BENCHMARK**  
 17-B, BRASS DISK STAMPED 17-B CAPPED AT  
 THE INTERSECTION OF UNIVERSITY AVENUE AND  
 CHICAGO AVENUE.  
 ELEVATION 956.733



**CURVE DATA**

Δ	R	L	T
1	12713'22"	15'	33.31' 30.23'
2	18728'38"	5.58'	18.25' 85.39'

- GENERAL NOTES**
- REFER TO SHEET 1 OF 3 FOR CONSTRUCTION NOTES INDICATED ON THIS PLAN BY ○.
  - REFER TO PLAN X-291 FOR TRAFFIC SIGNAL MODIFICATIONS.
  - REFER TO PLAN XL-374 FOR TRAFFIC STRIPING AND DELINEATION.

**ENGINEER IN RESPONSIBLE CHARGE**  
 RICHARD D. McGRATH  
 R.C.E. No. 31952 Expires 12/31/2000  
 DATE 7/14/97

**CITY OF RIVERSIDE, CALIFORNIA**  
**PUBLIC WORKS DEPARTMENT**

APPROVED BY: [Signature] DATE: 7/14/97  
 DEPUTY P.W. DIRECTOR

APPROVED BY: [Signature] DATE: 7/14/97  
 PUBLIC WORKS DIRECTOR

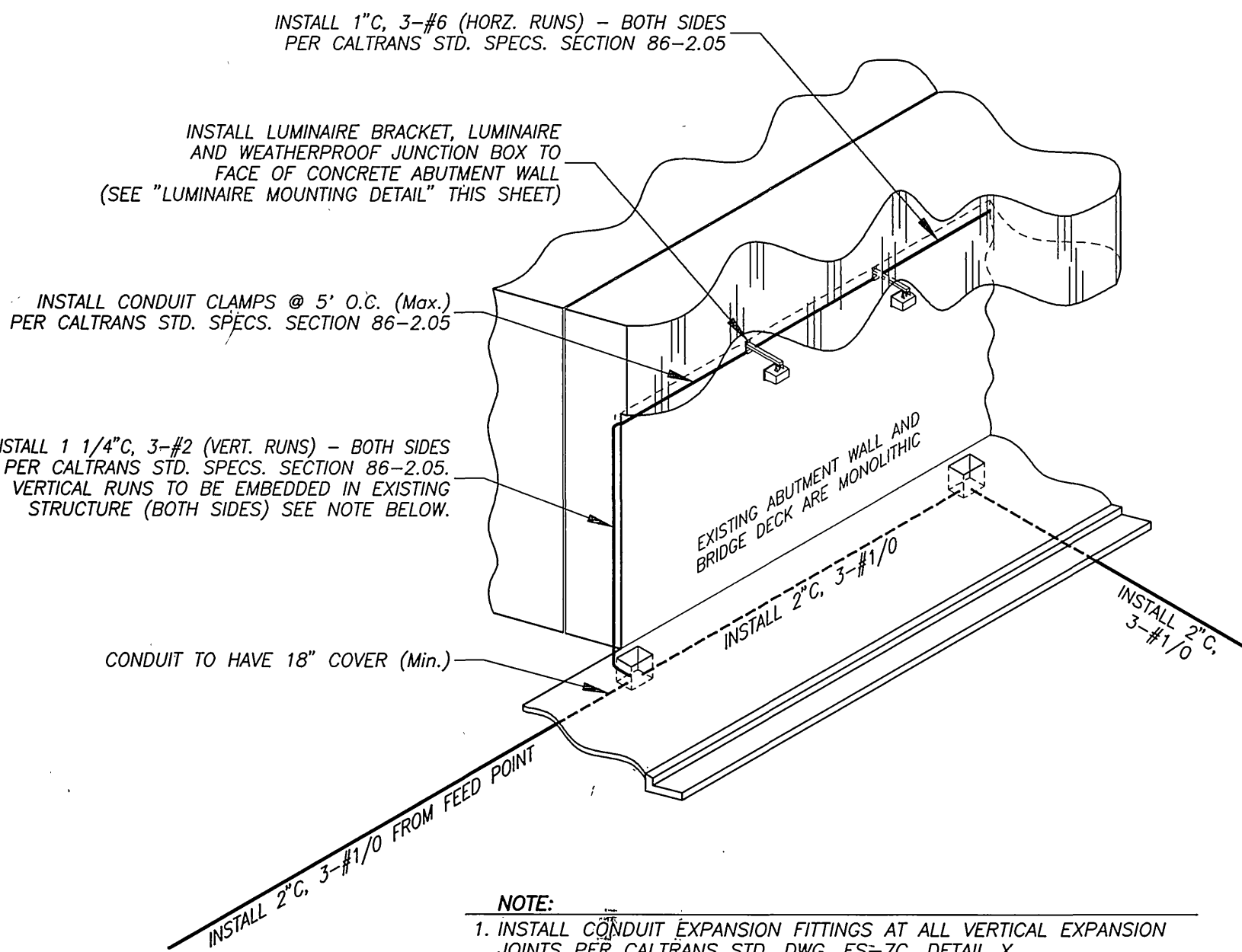
DESIGNED BY: PH/Da. DRAWN BY: PH/Da. CHECKED BY: [Signature]

**UNIVERSITY AVENUE**  
**WIDENING**  
 AT THE 60/215 FREEWAY

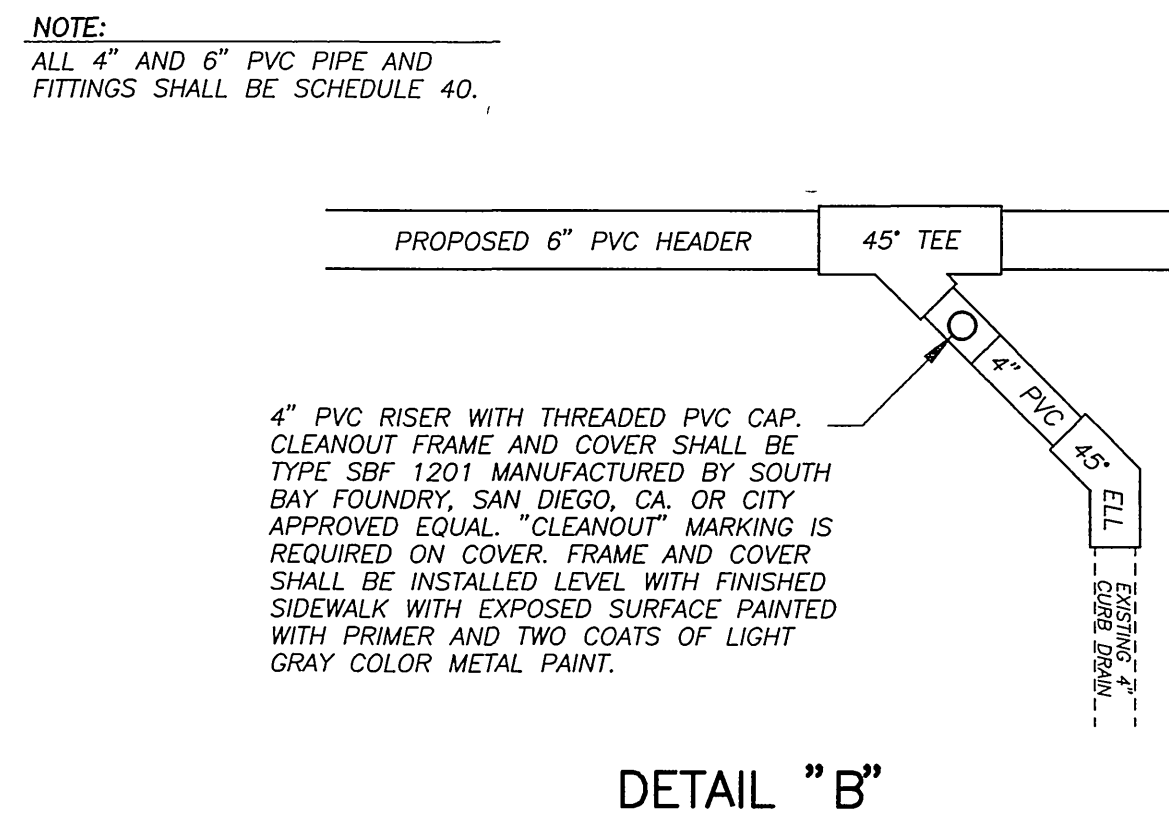
ACCOUNT NUMBER: 430-541500-440125-90192  
**R-3447**  
 SHEET 2 OF 3

HORIZ. SCALE: 1" = 20' VERT. SCALE: 1" = 4'

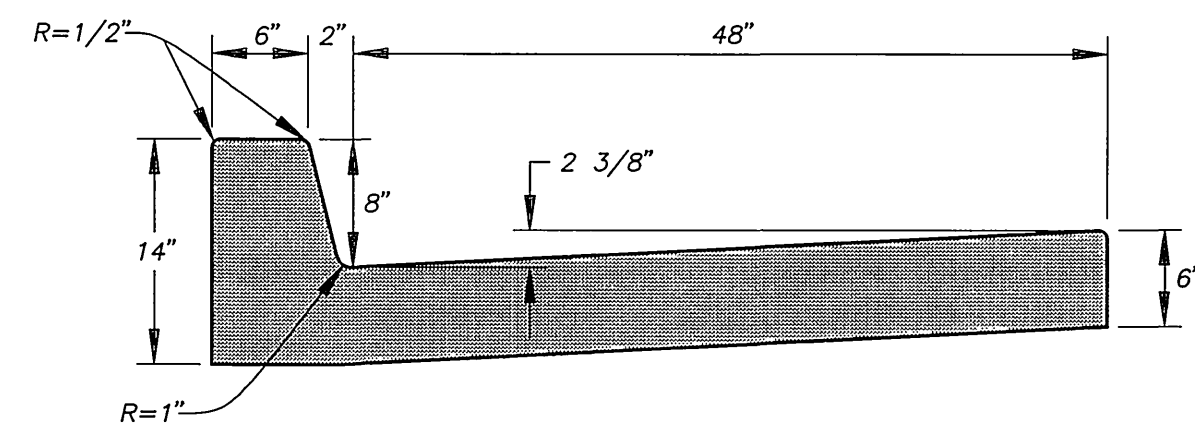
Caltrans Permit No. 08-97-N-MC-0184



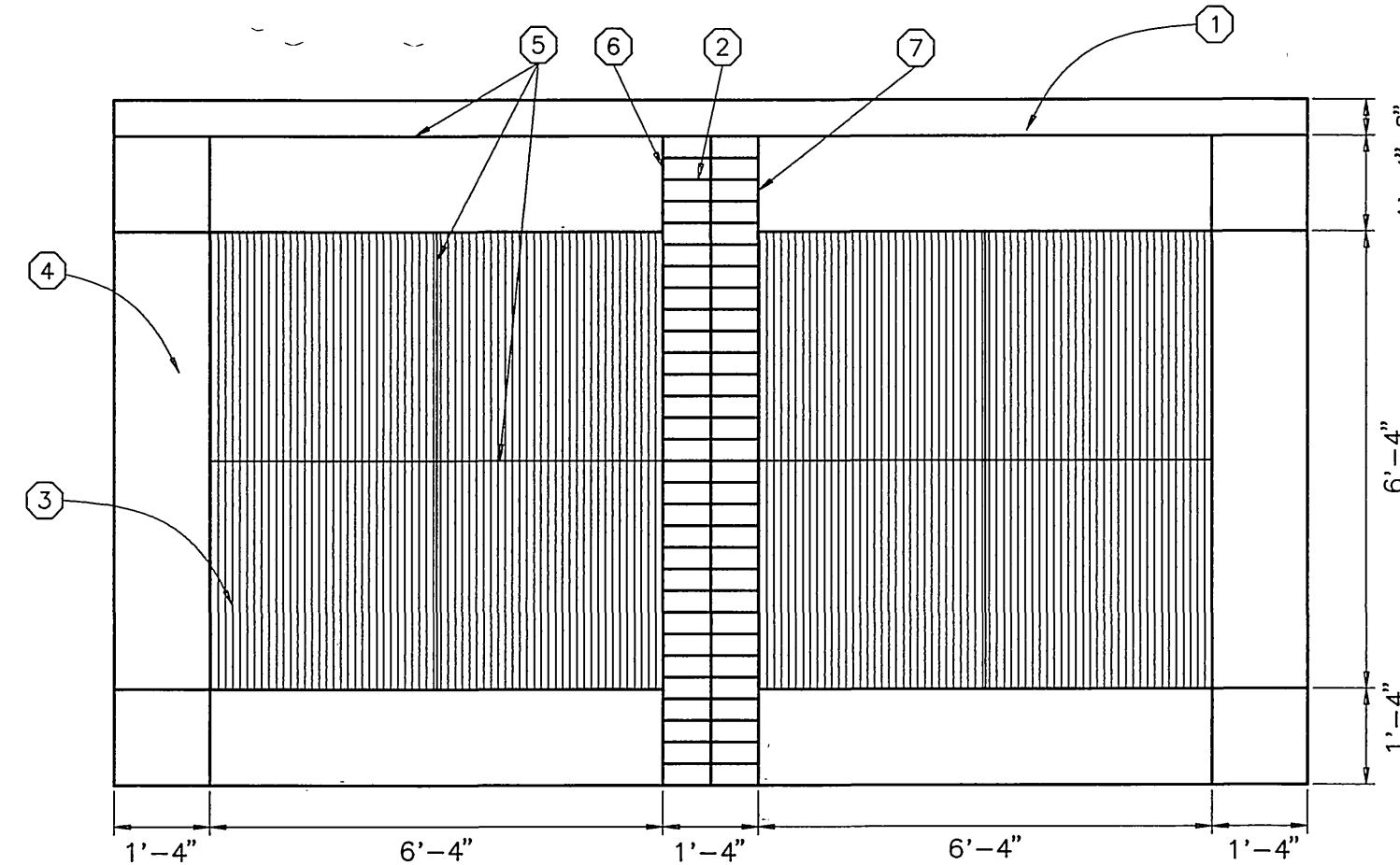
DETAIL "A" TYPICAL



DETAIL "B"

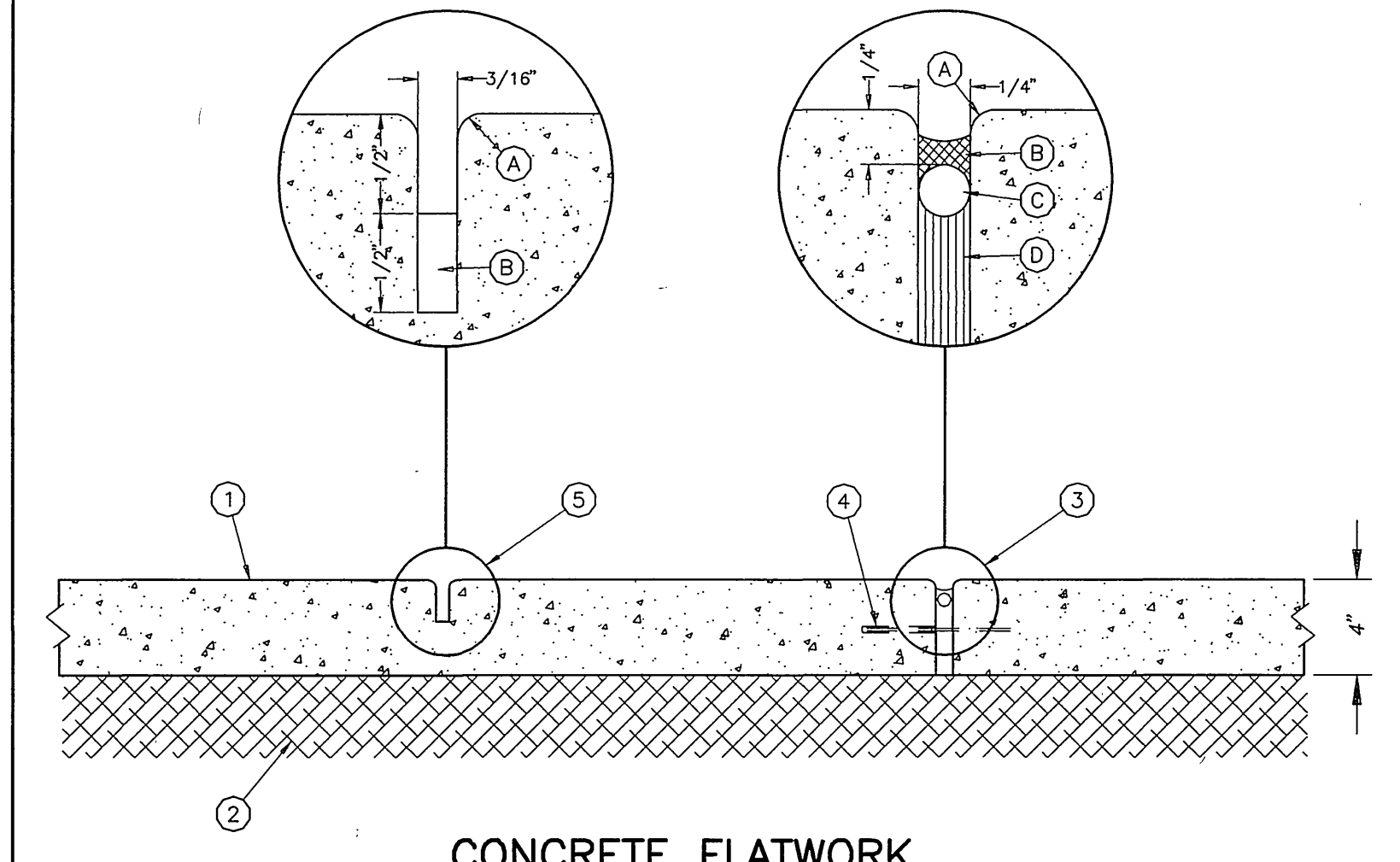


CURB WITH 48" GUTTER DETAIL



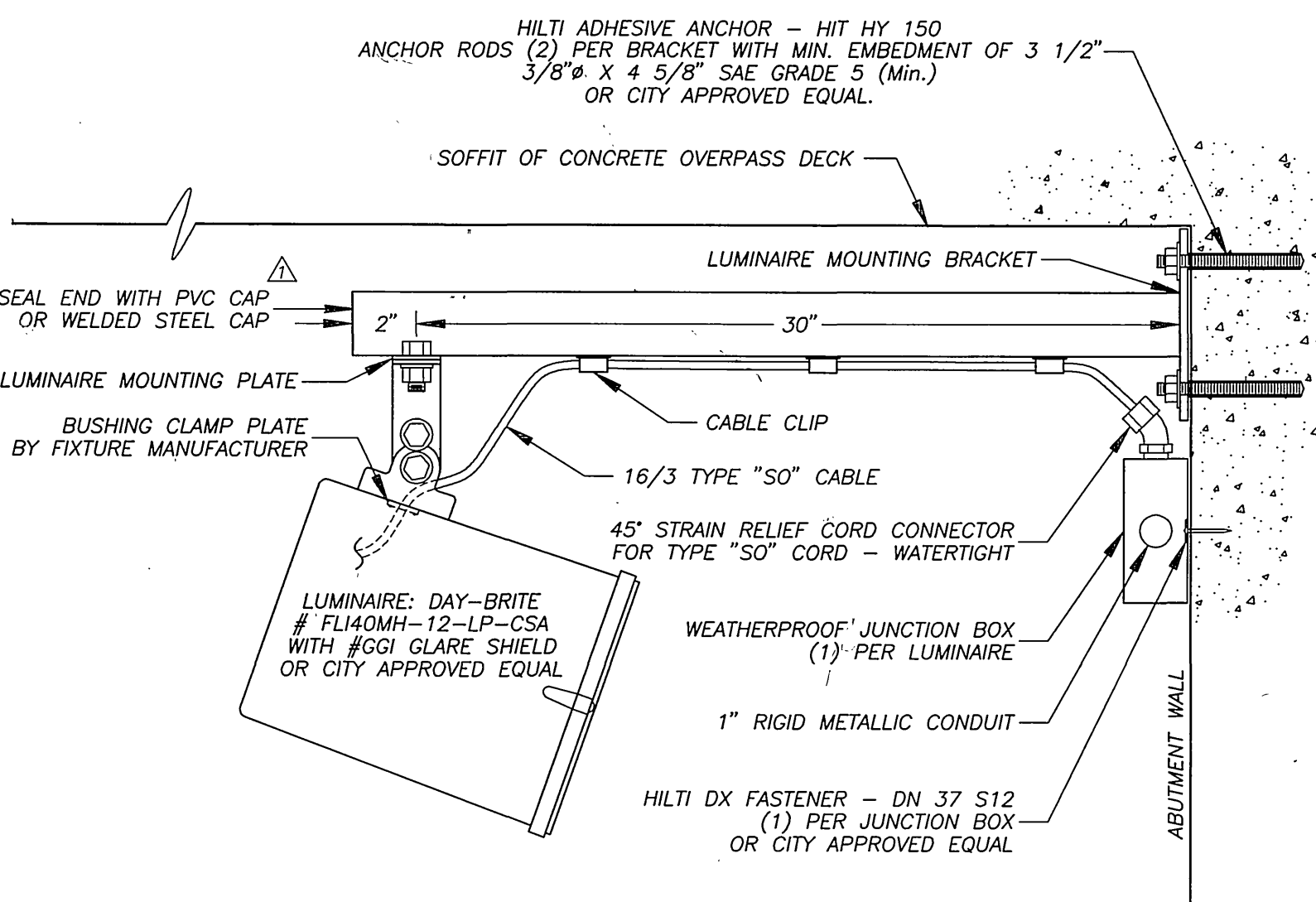
CONCRETE SIDEWALK DETAIL

- 1 PCC CURB AND GUTTER.
- 2 16" WIDE, 4" THICK STAMPED CONCRETE BANDING, PATTERN SHALL BE STAMPED BRICK 3 9/16" BY 7 7/16" WITH 3/8" WIDE BY 3/16" DEEP GROOVE. COLOR SHALL BE MISSION RED, MATCHING COLOR TO EXISTING CONCRETE BANDING ALONG UNIVERSITY AVENUE.
- 3 NATURAL GREY CONCRETE SIDEWALK WITH LIGHT TO MEDIUM BROOM FINISH.
- 4 NATURAL GREY CONCRETE BANDING WITH SMOOTH WOOD FLOAT FINISH.
- 5 TOOLED SCORED JOINT.
- 6 EXPANSION JOINT.
- 7 COLD JOINT BETWEEN GREY AND RED CONCRETE.



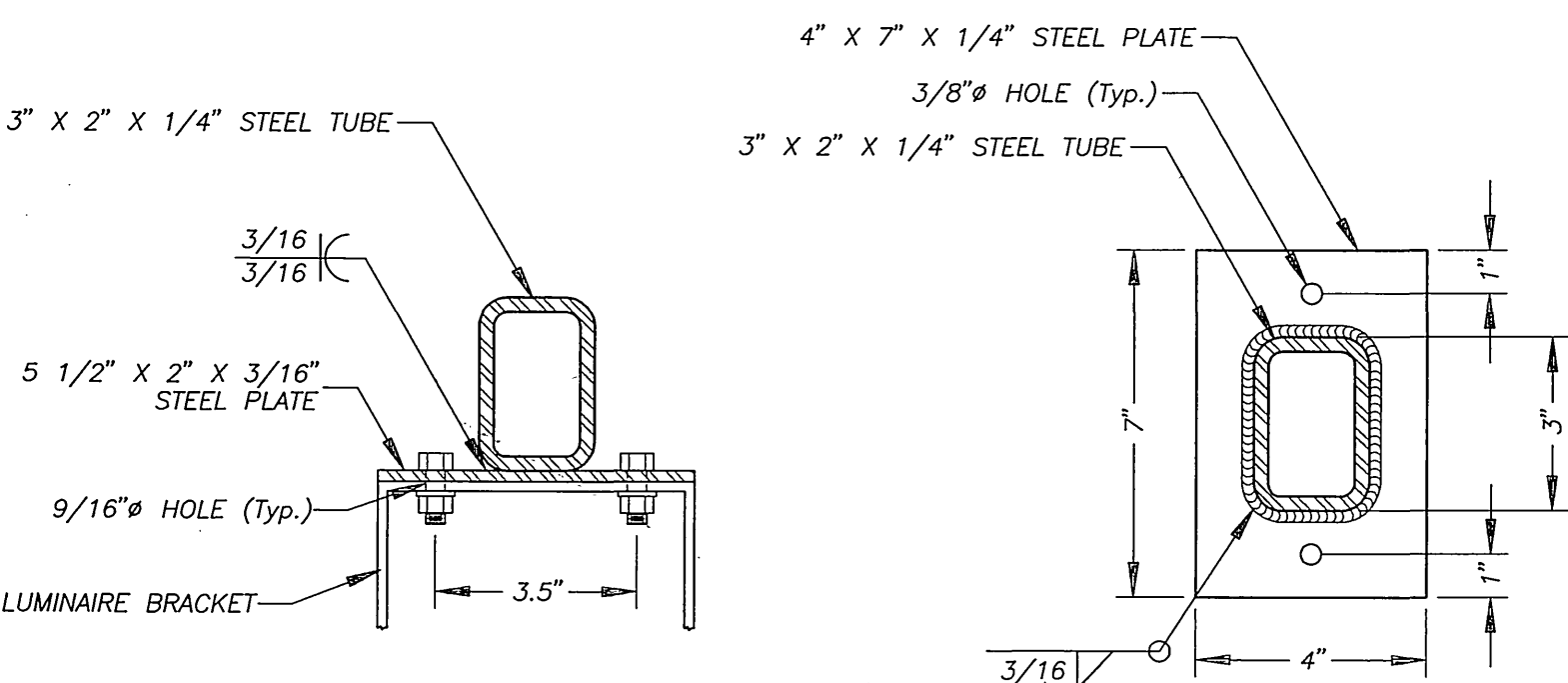
CONCRETE FLATWORK

- 1 CONCRETE PAVING.
- 2 COMPACTED SUBGRADE.
- 3 EXPANSION JOINT.
- A 1/4" TOOLED RADIUS.
- B CAULKING, COLOR TO MATCH NATURAL GREY CONCRETE PAVING. SUBMIT COLOR SAMPLES PRIOR TO INSTALLATION. CONTRACTOR TO SWEEP SAND INTO ALL CAULK JOINTS WHILE CAULKING IS STILL PLIABLE. SAND TO BE APPROVED BY ENGINEER.
- C BACKER ROAD.
- D 1/4" FELT EXPANSION FIBER BOARD.
- 4 18" STEEL DOWEL @ 30" O.C. SLEEVE ONE END.
- 5 SCORE JOINT.
- A 3/16" TOOLED RADIUS.
- B 1" DEEP SAWCUT - CUT TO BE MADE WITHIN 24 HOURS OF POUR.



LUMINAIRE MOUNTING DETAIL

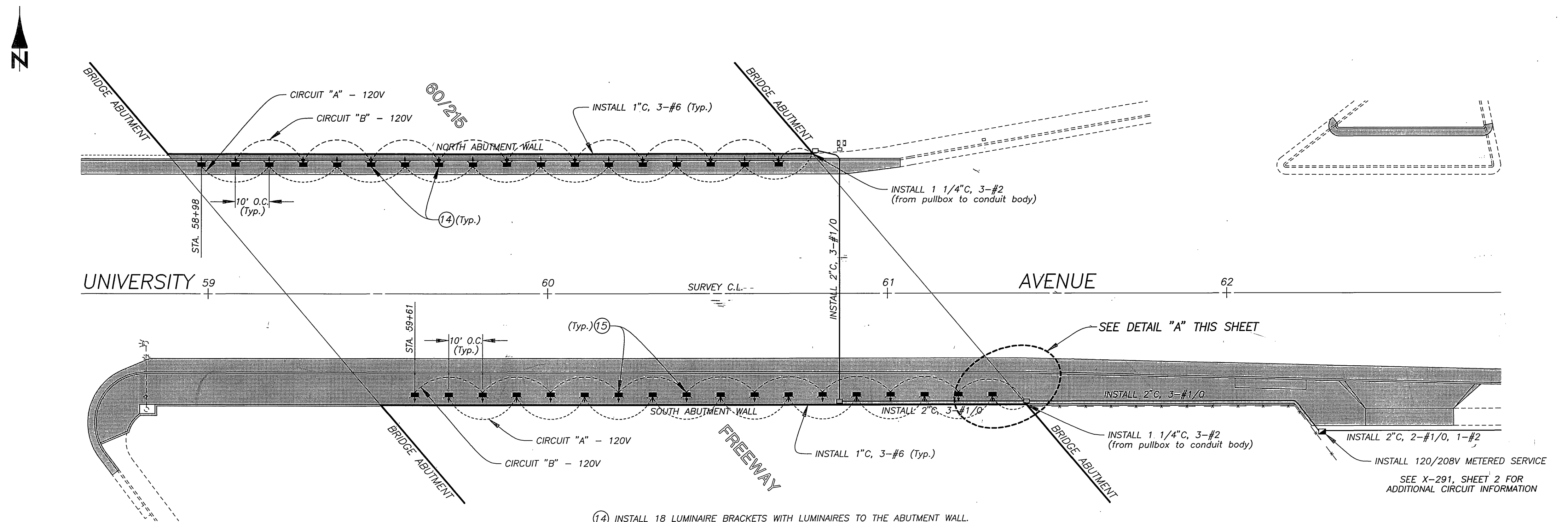
NOTE: ALL STRUCTURAL STEEL SHALL BE PAINTED PER STANDARD SPECIFICATIONS.



LUMINAIRE MOUNTING PLATE

LUMINAIRE MOUNTING BRACKET

BRIDGE LIGHTING

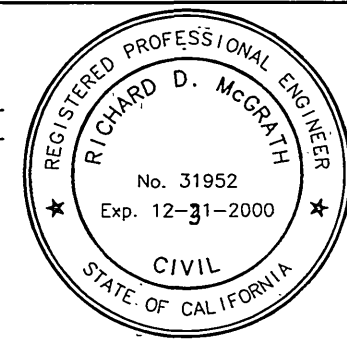


LUMINAIRE LOCATION PLAN

SCALE: 1" = 20'

- 14 INSTALL 18 LUMINAIRE BRACKETS WITH LUMINAIRES TO THE ABUTMENT WALL. SPACING SHALL BE 2.5' FROM THE NORTH ABUTMENT WALL AND 10' O.C.
- 15 INSTALL 18 LUMINAIRE BRACKETS WITH LUMINAIRES TO THE ABUTMENT WALL. SPACING SHALL BE 2.5' FROM THE SOUTH ABUTMENT WALL AND 10' O.C.
- LUMINAIRE: DAY-BRITE MODEL # FL40MH-12-LP-CSA (120V/400W, BALLAST-CWA) WITH #GGI GLARE SHIELD OR CITY APPROVED EQUAL. (SEE "LUMINAIRE MOUNTING DETAIL" THIS SHEET).

ENGINEER IN RESPONSIBLE CHARGE  
**Richard D. McGrath**  
 RICHARD D. McGRATH  
 R.C.E. No. 31952 Expires 12/31/2000  
 DATE 7/14/97



Added End Cap to Light Bracket & Paint Note.	7/14/97
APPROVED BY	DATE
DEPUTY P.W. DIRECTOR	7/14/97
PRINCIPAL ENGINEER	7/14/97
STREET DIVISION	7/14/97
TRAFFIC DIVISION	7/14/97
SURVEYOR	7/14/97

CITY OF RIVERSIDE, CALIFORNIA  
 PUBLIC WORKS DEPARTMENT

APPROVED BY **Bam** DATE 7/14/97

UNIVERSITY AVENUE  
 WIDENING  
 AT THE 60/215 FREEWAY  
 NOT TO SCALE UNLESS NOTED

AS BUILT 6/6/98  
 ACCOUNT NUMBER 430-541500-440125-90192  
**R-3447**  
 SHEET 3 OF 3  
 Caltrans Permit No. 08-97-N-MC-0184