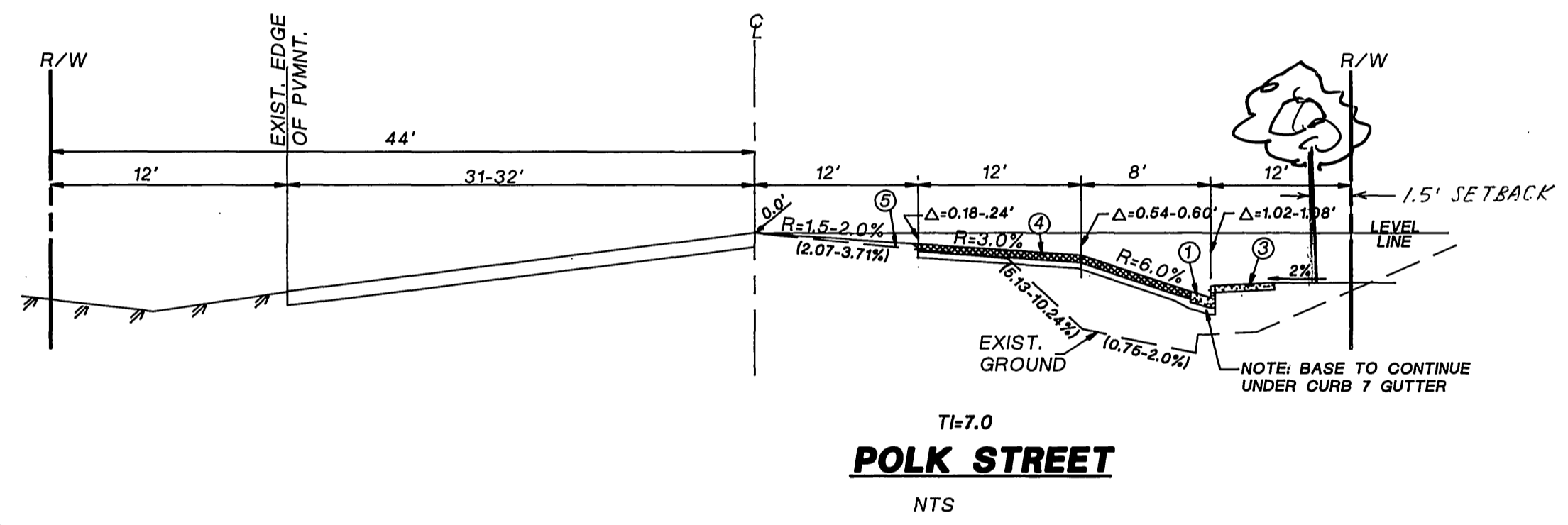
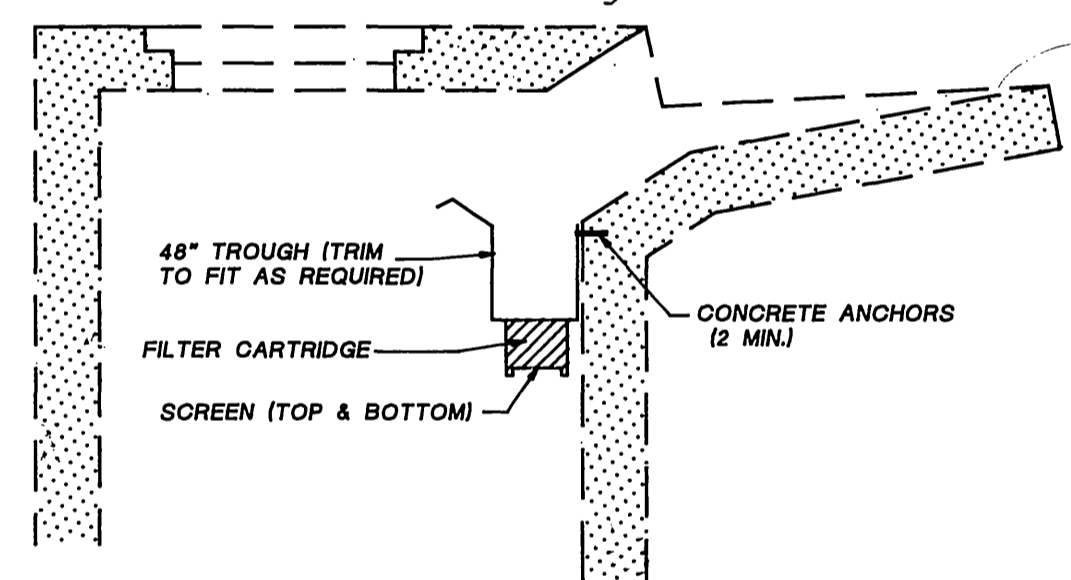


VICINITY MAP



POLK STREET

- GENERAL NOTES
1. It shall be the responsibility of the contractor to clear the right of way in accordance with the provisions of law at it affects each utility including irrigation lines and appurtenances and at no cost to the City.
  2. Construction shall be in accordance with the City of Riverside Department of Public Works, Standard Drawings, Standard Drawing No. 10 and the Standard Specifications for Public Works Construction, current edition.
  3. The private engineer signing these plans is responsible for assuring the accuracy and acceptability of the work hereon. In the event of discrepancies arising during construction, the private engineer shall be responsible for determining an acceptable solution and revising the plans for approval by the City (This note required on all plans.)
  4. Quantities shown are for information only and the City of Riverside is not responsible for their accuracy.
  5. The developer shall be responsible for preserving or re-establishing and referencing survey monuments destroyed, disturbed or buried as a result of construction shown hereon.
  6. See "Street Lighting Plans" UOL5-4484-2 for quantity and location of required street lights.
  7. All flagged elevations shall be staked in the field by the private engineer.
  8. Trim edge of existing pavement where new pavement joins to a smooth, straight line. Construct match-up paving as shown on plan and overlay paving as directed in the field to produce a smooth section.
  9. Construct driveway approaches per Standard Drawing 302. Exact size and location to be staked by the Private Engineer prior to construction of the curb and gutter.
  10. The developer and/or contractor shall contact the Street Division (351-6127) to pick up any existing Std. 180 barricades that are being removed. The City's inspector will make the final determination on whether a barricade can be relocated.
  11. On all areas within public right of way where the fill is one (1) foot or greater, a letter will be required from the soils engineer, certifying the compaction of the fill below subgrade, prior to issuance of the Construction Permit/Cut Sheets.
  12. All traffic signs shall be installed prior to opening the streets to traffic.
  13. Any traffic control striping obliterated and/or badly worn during construction shall be restored by the contractor within five days after notification from the City inspectors.
  14. Final striping for traffic control and/or pavement marking to be the responsibility of the developer.
  15. The contractor shall call in a location request to Underground Service Alert (USA). Phone E1-800/227-2600, two working days before digging. No construction permit will be issued by the Public Works Department involving excavation for underground facilities unless the applicant has been provided an inquiry identification number by U.S.A.
  16. Contractor is to verify existing sewer elevation prior to construction.
  17. Location of laterals to be determined in the field at the direction of the owner. Avoid conflict with proposed and/or existing facilities.
  18. No finished floor elevation shall be less than 4' above the sewer flow line at point of connection without having a proper backwater valve installed in the lateral.
  19. A plug shall be installed and will remain in place where the new sewer connects with the existing sewer until the new sewer is accepted by the City.
  20. The sewer contractor shall adjust manholes to final grade after paving is completed.
  21. In pavement overlay areas, distressed existing pavement shall be removed and replaced as directed by the Inspector prior to overlaying with A.C. paving.
  22. The contractor shall coordinate trenching for cable television with other trenching within the subdivision.
  23. Developer to give City Water Division five (5) working days written notice prior to start of construction and to allow City ten (10) working days for completion of work. (909.351.6368)
  24. STREET TREE PLANTING SHALL BE AS FOLLOWS:  
POLK ST. - PINUS CANARIENSIS  
CANARY ISLAND PINE 1 1/2" MIN. SIZE 45' SPACING - 5 REG.



INSTALL TYPICAL CURB INLET "FOSSIL FILTER" KRISTAR ENTERPRISES OR APPROVED EQUAL, IN EXISTING CATCH BASIN IN CONFORMANCE WITH THE REQUIREMENTS OF THE RIVERSIDE COUNTY DRAINAGE AREA MANAGEMENT PLAN

DETAIL 'A'

CONSTRUCTION NOTES

- 1 CONSTRUCT 6" P.C.C. CURB & GUTTER PER CITY STD. DWG. NO. 200, TYPE I
- 2 CONSTRUCT MODIFY DRIVEWAY APPROACH PER CITY STD. DWG. NO. 302
- 3 CONSTRUCT SIDEWALK PER CITY STD. DWG. NO. 325
- 4 CONSTRUCT PAVEMENT SECTION 4" A.C. OVER 11" C.A.B. PER CITY R-2757
- 5 CONSTRUCT VARIABLE THICKNESS A.C. OVERLAY TO THE SATISFACTION OF CITY ENGINEER
- 6 ADJUST MANHOLE TO GRADE.
- 7 RELOCATE AS NECESSARY.
- 8 CONSTRUCT AC BERM.
- 9 REMOVE EXIST. AC BERM
- 10 CONSTRUCT UNDERSIDEWALK DRAIN PER CITY STD. DWG. NO. 411 (W-31)
- 11 SAWCUT & REMOVE EXIST. C.&G., SIDEWALK.
- 12 REMOVE EXIST. AC PAVEMENT & REGRADE AS NECESSARY. (SEE GRADING PLAN)
- 13 CONSTRUCT SEWER CLEANOUT PER CITY STD. DWG. NO. 560.
- 14 INSTALL FILTERING SYSTEM AT CATCH BASIN LOCATED AT N'LY CORNER OF COCHRAN & SKOFSTAD ST. PER DETAIL "A" ON SHEET 1.

283 L.F.  
1,094 S.F.  
1,365 S.F.  
7,965 S.F.  
3,497 S.F.  
L.S.  
L.S.  
117 L.F.  
400 L.F.  
1 EA.  
L.S.  
1 EA.  
1 EA.

**CITY OF RIVERSIDE**  
OVERHEAD & UNDERGROUND

*Bedmann*  
APPROVED

11-21-96  
DATE

**Underground Service Alert**

CALL: TOLL FREE  
1-800 422-4133

TWO WORKING DAYS BEFORE YOU DIG



**THE GAS CO.**

*[Signature]*  
APPROVED

12-23-96  
DATE

**CITY OF RIVERSIDE**  
WATER DEPARTMENT

*A.J. Syed*  
APPROVED

11-26-1996  
DATE

VOID ONE YEAR FROM THIS DATE

**BENCHMARK**  
CITY OF RIVERSIDE B.M. E3-G

LARGE PK. NAIL W/ CITY OF RIVERSIDE TAG,  
IN THE MOST W'LY. CORNER OF WATER VAULT,  
IN MAGNOLIA AVE. MEDIAN, 52 1/2' E'LY OF  
C.L., POLK ST,  
ELEV. 719.017

PREPARED BY:  
**ROBIN B. HAMERS & ASSOC., INC.**  
CIVIL ENGINEERS  
234 E. 17TH STREET, SUITE 205  
COSTA MESA, CA 92627  
(714) 648-1192

*[Signature]*  
ROBIN B. HAMERS R.C.E. 31720

11/21/96  
DATE

MARK	REVISIONS	APPR.	DATE

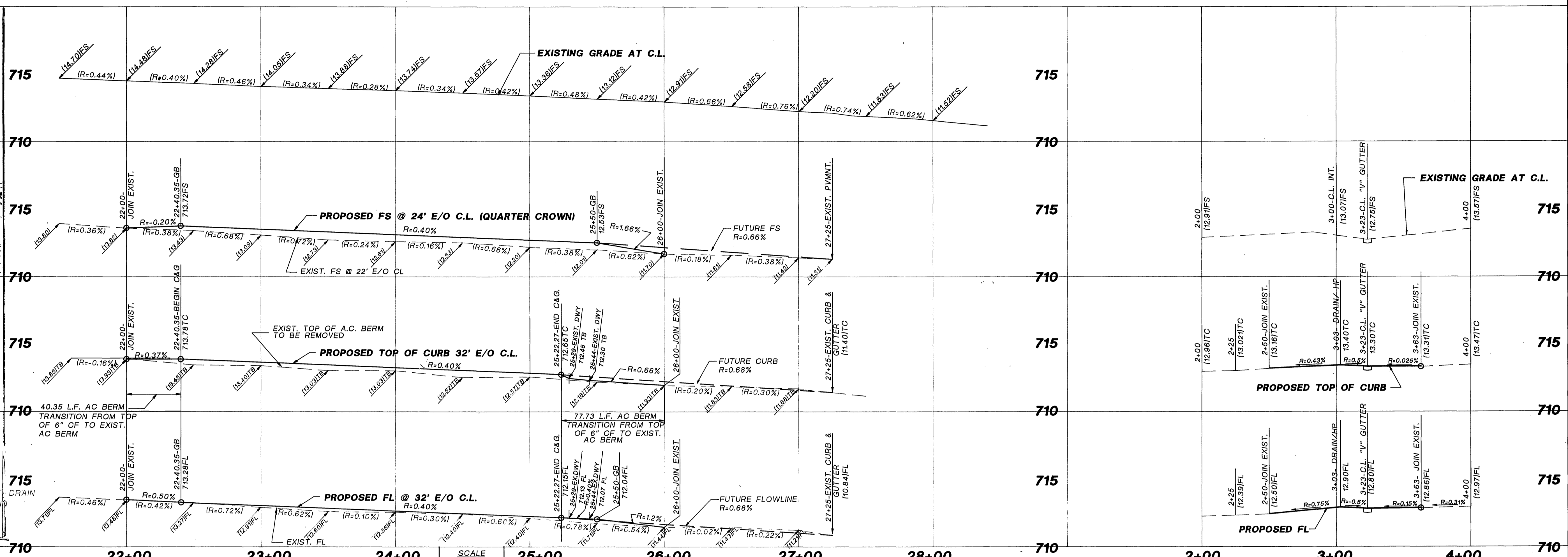
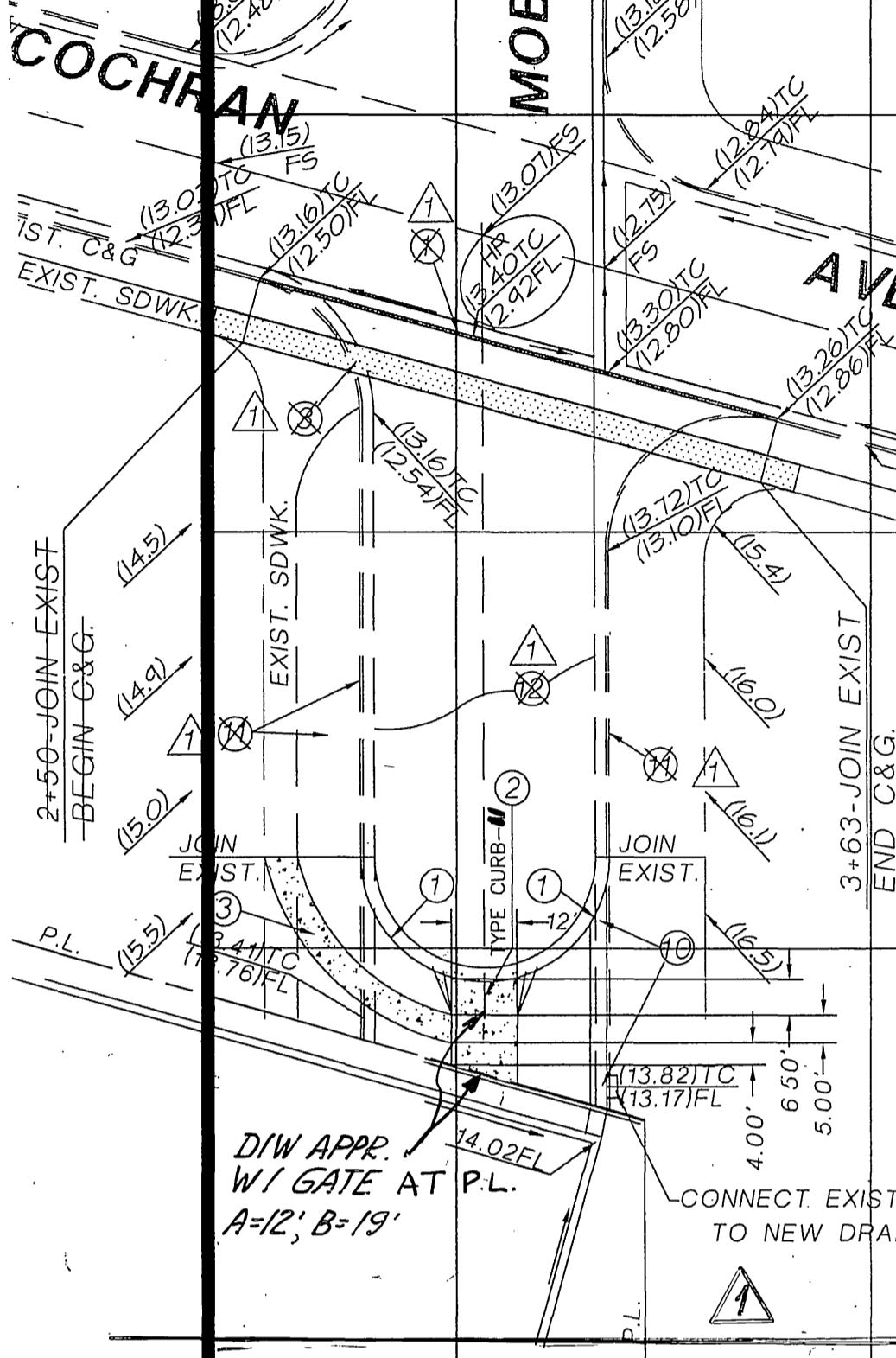
**CITY OF RIVERSIDE, CALIFORNIA**  
**DEPARTMENT OF PUBLIC WORKS**

APPROVED BY	BY	DATE	APPROVED BY
	<i>[Signature]</i>	11/21/96	<i>[Signature]</i>
PRINCIPAL ENGINEER	<i>[Signature]</i>	12-30-96	DIRECTOR OF PUBLIC WORKS
PARK DEPARTMENT	<i>[Signature]</i>	11/19/97	
TRAFFIC DIVISION	<i>[Signature]</i>	11/16/97	
CHIEF P.W. ENGR.	<i>[Signature]</i>	11/16/97	
STREET SERVICES	<i>[Signature]</i>	11/17/97	

**STREET PLAN & PROFILE**  
**STREET IMPROVEMENT PLANS**  
**3941 POLK STREET**  
**STA. 22+40.35 TO 25+23.27**  
**& MOBLEY AVE. VACATION**  
CU - 025 - 845

HORIZ. SCALE: 1"=40'  
VERT. SCALE: 1"=4'

ACCOUNT NO.  
DRAWING NUMBER  
**R-3462**  
SHEET 1 OF 2

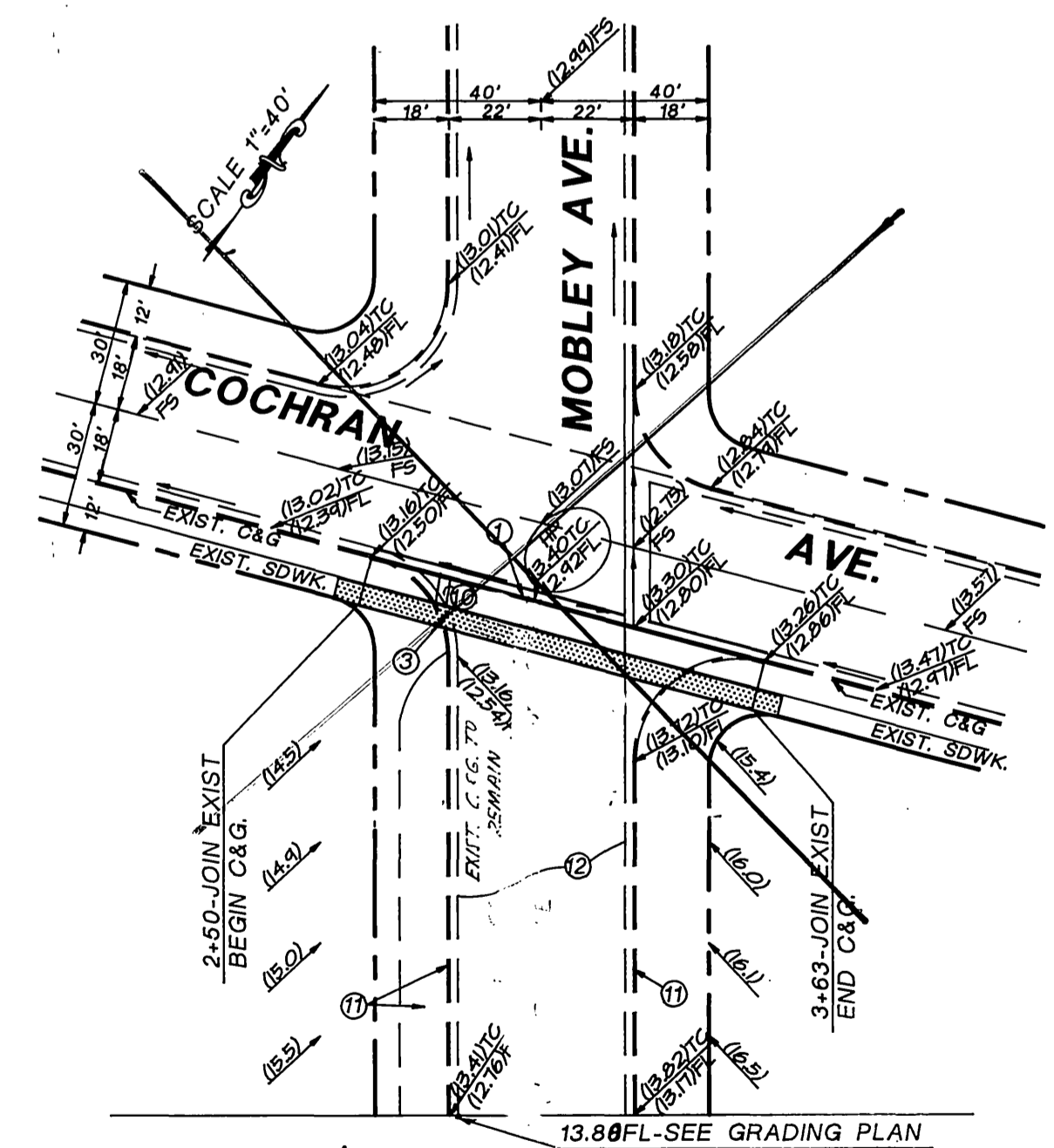
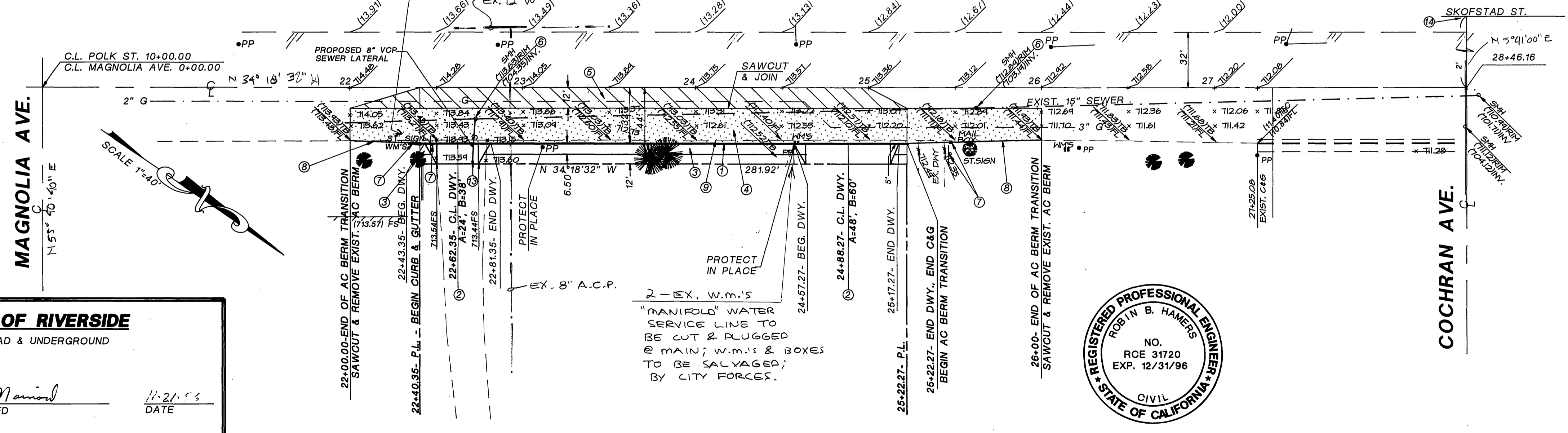


**CONSTRUCTION NOTES**

- CONSTRUCT 6" P.C.C. CURB & GUTTER PER CITY STD. DWG. NO. 200, TYPE 1
- CONSTRUCT MODIFY DRIVEWAY APPROACH PER CITY STD. DWG. NO. 302
- CONSTRUCT SIDEWALK PER CITY STD. DWG. NO. 325
- CONSTRUCT PAVEMENT SECTION 4" A.C. OVER 11" C.A.B. PER CITY R-2757
- CONSTRUCT VARIABLE THICKNESS A.C. OVERLAY TO THE SATISFACTION OF CITY ENGINEER.
- ADJUST MANHOLE TO GRADE.
- RELOCATE AS NECESSARY.
- CONSTRUCT AC BERM.
- REMOVE EXIST. AC BERM
- CONSTRUCT UNDERSIDEWALK DRAIN PER CITY STD. DWG. NO. 411 ~~2EA.~~
- SAWCUT & REMOVE EXIST. C.&G. SIDEWALK.
- REMOVE EXIST. AC PAVEMENT & REGRADE AS NECESSARY. (SEE GRADING PLAN)
- CONSTRUCT SEWER CLEANOUT PER CITY STD. DWG. NO. 560.
- INSTALL FILTERING SYSTEM AT CATCH BASIN LOCATED AT N'LY CORNER OF COCHRAN & SKOFSTAD ST. PER DETAIL "A" ON SHEET 1.

SCALE  
HORIZ. 1"=40'  
VERT. 1"=4'

# POLK STREET



- LEGEND**
- A.C. ASPHALT CONCRETE
  - B.W. BACK OF WALK
  - C.O. CLEAN OUT FOR SEWER
  - C.Y. CUBIC YARD
  - E.P. EDGE OF PAVEMENT
  - F.F. FINISHED FLOOR ELEVATION
  - F.G. FINISHED GRADE ELEVATION
  - F.L. FLOW LINE ELEVATION
  - F.S. FINISHED SURFACE ELEVATION
  - G.B. GRADE BREAK
  - H.P. HIGH POINT ELEVATION
  - INV. INVERT OF PIPE ELEVATION
  - L.F. LINEAR FEET
  - N.G. NATURAL GRADE
  - P.C.C. PORTLAND CEMENT CONCRETE
  - P.L. PROPERTY LINE
  - R. RATE OF GRADE OR RADIUS
  - R/W RIGHT OF WAY
  - S. SLOPE OF PIPE
  - T.C. TOP OF CURB ELEVATION
  - T.F. TOP OF FOOTING ELEVATION
  - T.G. TOP OF GRATE ELEVATION
  - TOE TOE OF SLOPE
  - TOP TOP OF SLOPE
  - T.W. TOP OF WALL ELEVATION
  - ( ) INDICATES EXISTING ELEVATION

**CITY OF RIVERSIDE**  
OVERHEAD & UNDERGROUND

*B. M. Hamers*  
APPROVED

11-21-96  
DATE

**THE GAS CO.**

*H. P. ...*  
APPROVED

12-23-96  
DATE

**CITY OF RIVERSIDE**  
WATER DEPARTMENT

*Assigned*  
APPROVED

11-26-96  
DATE

VOID ONE YEAR FROM THIS DATE

**BENCHMARK**  
CITY OF RIVERSIDE B.M. E3-G

LARGE PK. NAIL W/ CITY OF RIVERSIDE TAG,  
IN THE MOST W.L.Y. CORNER OF WATER VAULT,  
IN MAGNOLIA AVE. MEDIAN, 52' E'LY OF  
CL. POLK ST.

ELEV. 719.017

PREPARED BY:  
**ROBIN B. HAMERS & ASSOC., INC.**  
CIVIL ENGINEERS

234 E. 17TH STREET, SUITE 205  
COSTA MESA, CA 92627  
(714) 548-1192

*R. B. Hamers*  
ROBIN B. HAMERS R.C.E. 31720

11/21/96  
DATE



MARK	REVISIONS	APPR.	DATE

**CITY OF RIVERSIDE, CALIFORNIA**  
DEPARTMENT OF PUBLIC WORKS

APPROVED BY: *[Signature]* DATE: 11/17/97  
PRINCIPAL ENGINEER

TRAFFIC DIVISION  
CHIEF P.W. ENGR. *[Signature]* DATE: 11/17/97  
STREET SERVICES

**STREET PLAN & PROFILE**  
**STREET IMPROVEMENT PLANS**  
3941 POLK STREET  
STA. 22+42.17 TO 25+22.17  
& MOBLEY AVE. VACATION  
CU - 025 - 845

HORIZ. SCALE: 1"=40'  
VERT. SCALE: 1"=40'

ACCOUNT NO.  
DRAWING NUMBER  
**R-3462**  
SHEET 2 OF 2