

RIVERSIDE CALIFORNIA

PUBLIC WORKS DEPARTMENT ARLINGTON AVENUE WIDENING MURRAY STREET TO NEIL STREET

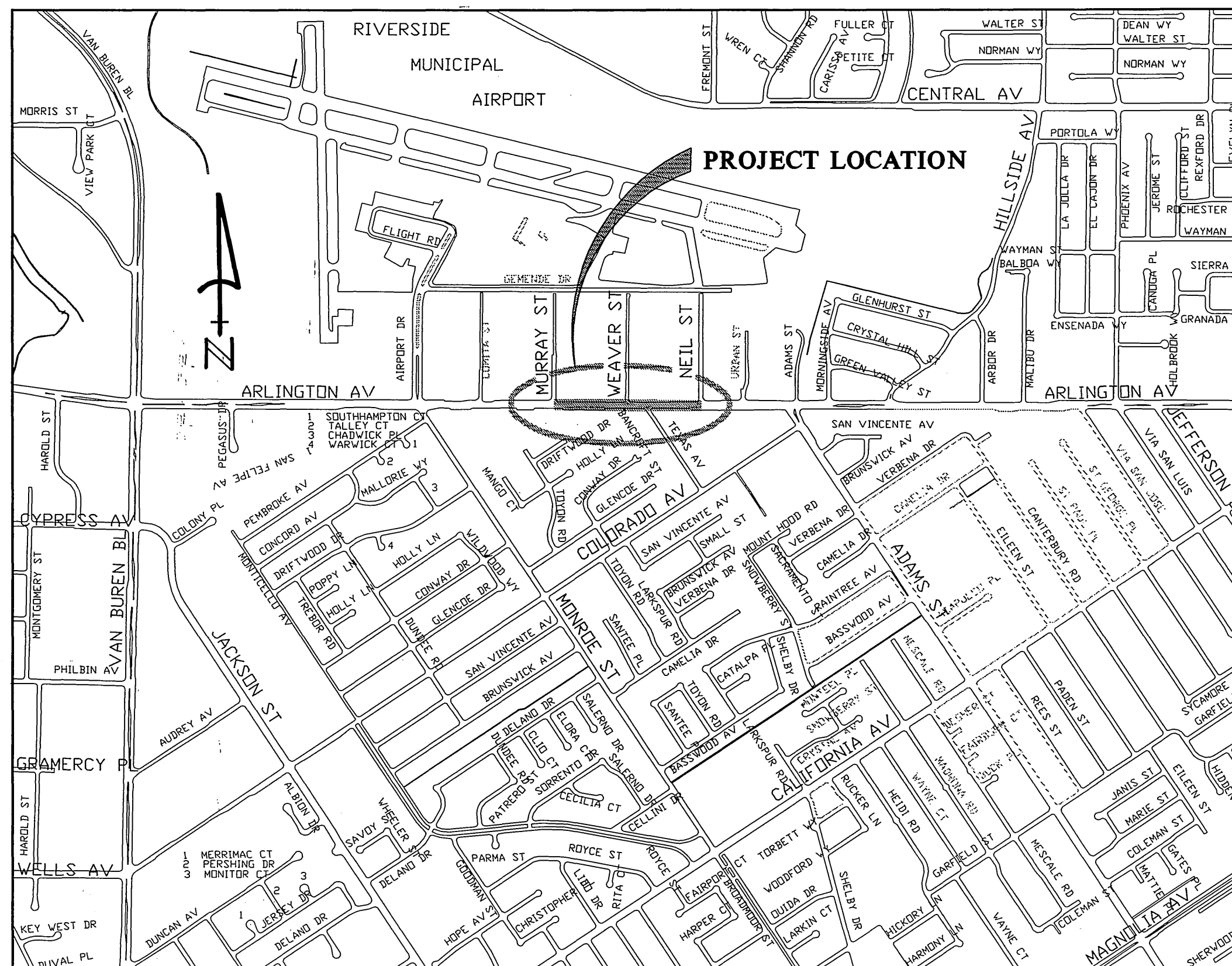
GENERAL CONSTRUCTION NOTES

- 1 EXISTING UTILITIES SHOWN ON THIS PLAN ARE PLOTTED FROM UTILITY RECORDS. THE CONTRACTOR IS REQUIRED TO TAKE DUE PRECAUTIONARY MEASURES TO LOCATE AND PROTECT ALL UTILITIES WHETHER OR NOT SHOWN ON THIS PLAN.
- 2 PRIME CONTRACTORS BIDDING THIS WORK SHALL HAVE A CLASS A OR C-12 LICENSE.
- 3 CONFLICTING UTILITIES SHOWN WITHIN CONSTRUCTION AREA WILL BE RELOCATED PRIOR TO CONSTRUCTION.
- 4 RIGHT OF ENTRY HAVE BEEN OBTAINED FOR WORK SHOWN OUTSIDE OF CITY RIGHT OF WAY.
- 5 MAIL BOXES INTERFERING WITH PROPOSED SIDEWALK CONSTRUCTION SHALL BE TEMPORARILY RELOCATED TO ENABLE PROPERTY OWNERS TO RECEIVE THEIR MAIL AND BE REINSTALLED IN FINAL POSITION BY THE CONTRACTOR.
- 6 WHERE NEW PAVEMENT IS TO JOIN THE EXISTING PAVEMENT, THE EDGE OF THE EXISTING PAVEMENT SHALL BE TRIMMED IN A SMOOTH AND STRAIGHT LINE. CONSTRUCTION MATCH-UP PAVING AS SHOWN ON THE PLANS AND OVERLAY PAVING AS DIRECTED IN THE FIELD TO PRODUCE A SMOOTH SECTION.
- 7 CONSTRUCTION SHALL BE IN ACCORDANCE WITH THE CITY OF RIVERSIDE STANDARD DRAWINGS AND STANDARD SPECIFICATIONS FOR PUBLIC WORKS CONSTRUCTION, 1997 EDITION.

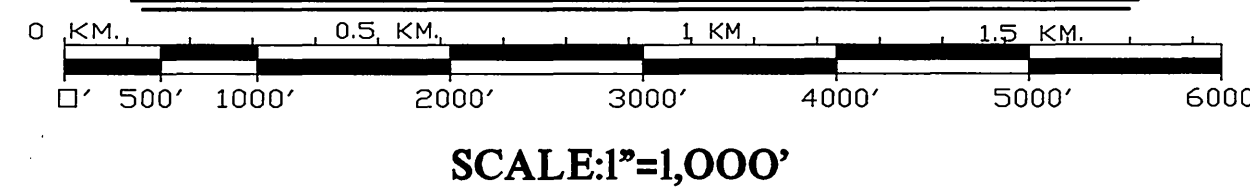
SPECIFIC CONSTRUCTION NOTES

NUMBERS ABOVE 100 IN A HEXAGON ON THE PLAN REFER TO THE RESPECTIVE STANDARD DRAWING AND SHALL BE CONSTRUCTED ACCORDINGLY. UNLESS MODIFICATIONS ARE NOTED ON THE PLAN OR COVER SHEET. ANY NUMBER SHOWN BELOW THE STANDARD DRAWING NUMBER INDICATES THE SPECIFIC ALTERNATE TO BE CONSTRUCTED.

- AC WHEELCHAIR RAMP, CALTRANS STANDARD PLANS DATED MAY 1996 PER CITY STD. DWG. 304, TYPE II.
- ADJUST WATER GATE VALVE COVER TO FINISHED GRADE.
- ADJUST SEWER MANHOLE COVER TO GRADE.
- CONSTRUCT 0.50' AC OVER 1.80' CAB OVER COMPACTED NATIVE MATERIAL.
- POWER POLE TO BE RELOCATED BY PUBLIC UTILITIES ELECTRIC DIVISION PRIOR TO CONSTRUCTION.
- CONSTRUCT VARIABLE THICKNESS AC OVERLAY (0.0' TO 0.30').
- REMOVE & REPLACE 2' HIGH BLOCK WALL INCLUDING BRICK CAP TO 55' LEFT OF CENTER LINE OF ARLINGTON AVENUE.
- RELOCATE STREET SIGN.
- WATER METER TO BE RELOCATED BY PUBLIC UTILITIES WATER DIVISION PRIOR TO CONSTRUCTION.
- CONSTRUCT 0.21' THICK AC SIDEWALK AS SHOWN ON THE PLAN.
- APPLY EMULSION AGGREGATE SLURRY (SLURRY SEAL) TO ARLINGTON AVENUE FROM STA. 37+25.24 TO STA. 50+25.47 AS SHOWN ON THE PLAN.



PROJECT LOCATION MAP



EXISTING TOPOGRAPHY LEGEND

EXISTING TOPOGRAPHY:

- BLOCK WALL
- BOARD FENCE
- CHAIN LINK FENCE
- SANITARY SEWER M.H.
- SANITARY SEWER CLEANOUT
- STORM DRAIN M.H.
- IRRIGATION WEIR
- WATER M.H.
- GAS M.H.
- ELECTRIC M.H.
- TELEPHONE M.H.
- WATER METER
- FIRE HYDRANT
- SPRINKLER HEAD
- VALVE
- AIR VALVE
- AIR VENT
- BUS STOP SIGN
- BLOW-OFF VALVE
- POLE & GUY ANCHOR
- POWER POLE
- TELEPHONE POLE
- TELEPHONE RISER
- JOINT USE POLE
- PULL BOX
- TRAFFIC SIGN
- FIRE ALARM BOX
- STREET NAME SIGN
- GAS METER
- MAIL BOX
- WALK-DON'T WALK PEDESTRIAN SIGNAL
- ELECTROLYSIS TEST STATION
- WHEEL STOP
- A.C. BERM
- PEDESTRIAN PUSH BUTTON
- TRAFFIC SIGNAL
- TRAFFIC SIGNAL ON MAST ARM
- TRAFFIC SIGNAL CONTROLLER
- STREET LIGHT & TRAFFIC SIGNAL ON MAST ARM
- STREET LIGHT (UPRIGHT)
- STREET LIGHT ON MAST ARM
- STEEL POST
- WOOD POST

IMPORTANT NOTICE
Section 42142211 of the Government Code requires a Dig Alert Identification Number to be issued before a "Trench to Excavate" will be void. For your Dig Alert I.D. Number call CALL TOLL FREE 48 HOURS BEFORE YOU DIG UNDERGROUND SERVICE ALERT 1-800-227-2600

REGISTERED PROFESSIONAL ENGINEER
MICHAEL KATUSIAN
No. 36686
CIVIL
STATE OF CALIFORNIA

ENGINEER IN RESPONSIBLE CHARGE
Michael Katusian
MICHAEL KATUSIAN
R.C.E. No. 36686 expires 6/30/00
DATE 4/11/00

REVISOR STATE STD. 304-C TO CITY
STD. DWG. 304, TYPE II.

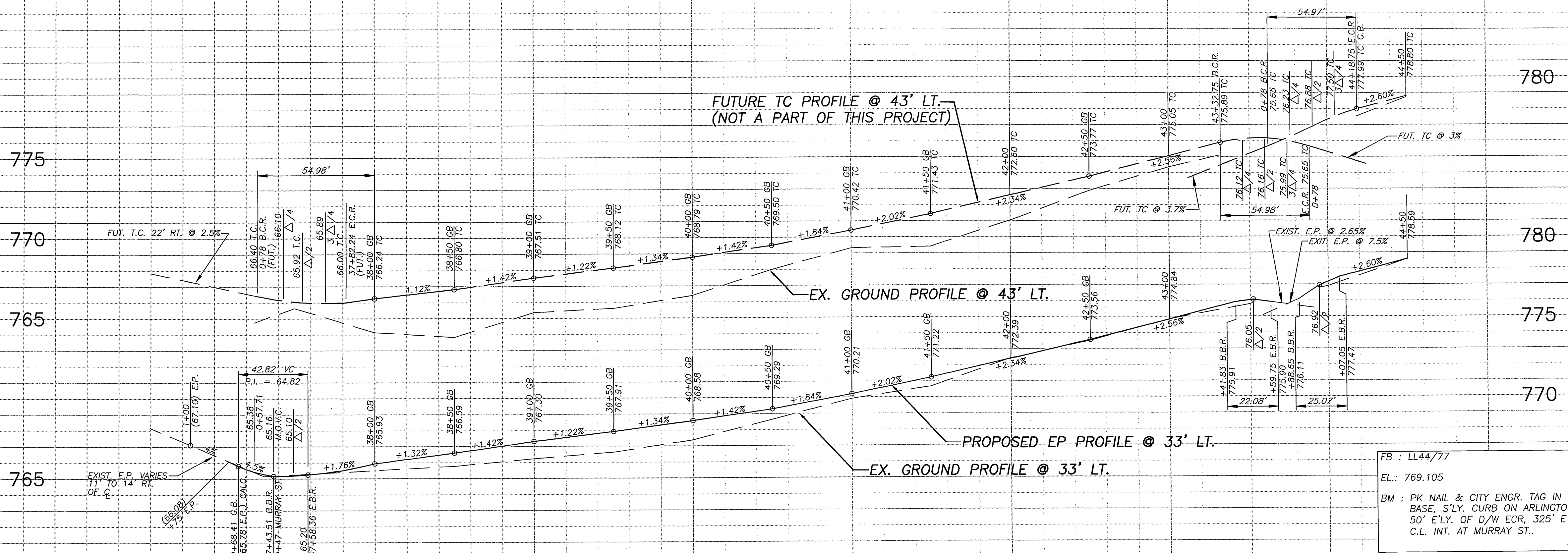
CITY OF RIVERSIDE, CALIFORNIA
PUBLIC WORKS DEPARTMENT

APPROVED BY	BY	DATE	APPROVED BY
ENGINEERING MANAGER	7/13	7/19/00	R. M. Swatt
PRINCIPAL ENGINEER	7/13	7/19/00	PUBLIC WORKS DIRECTOR
STREET SERVICES	7/13	7/19/00	
SURVEYOR	7/13	7/19/00	
TRAFFIC DIVISION	7/13	7/19/00	
TRANS DEPARTMENT			
INSPECTION			

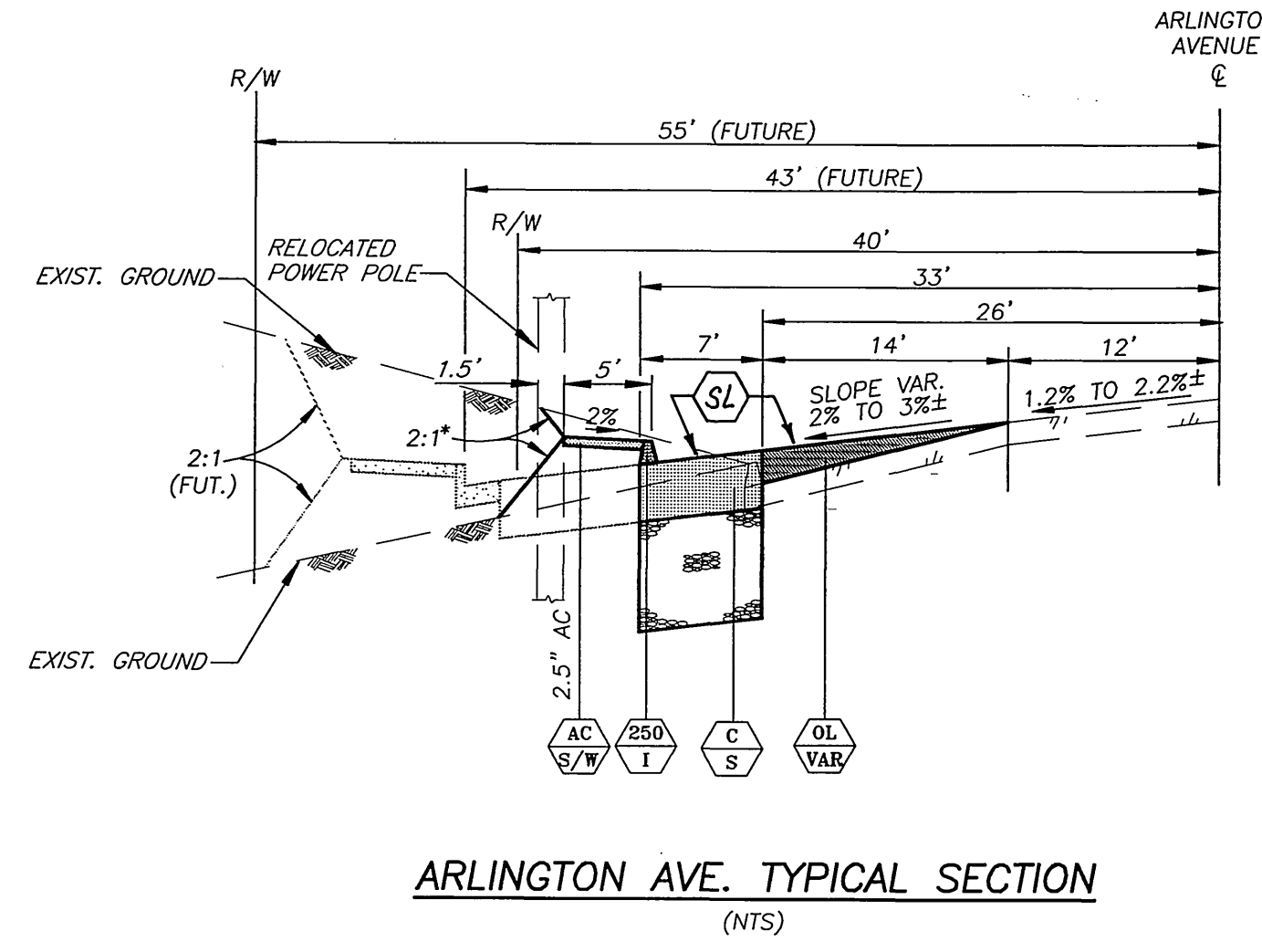
DATE 7-10-00

ARLINGTON AVENUE
WIDENING
MURRAY STREET TO NEIL STREET

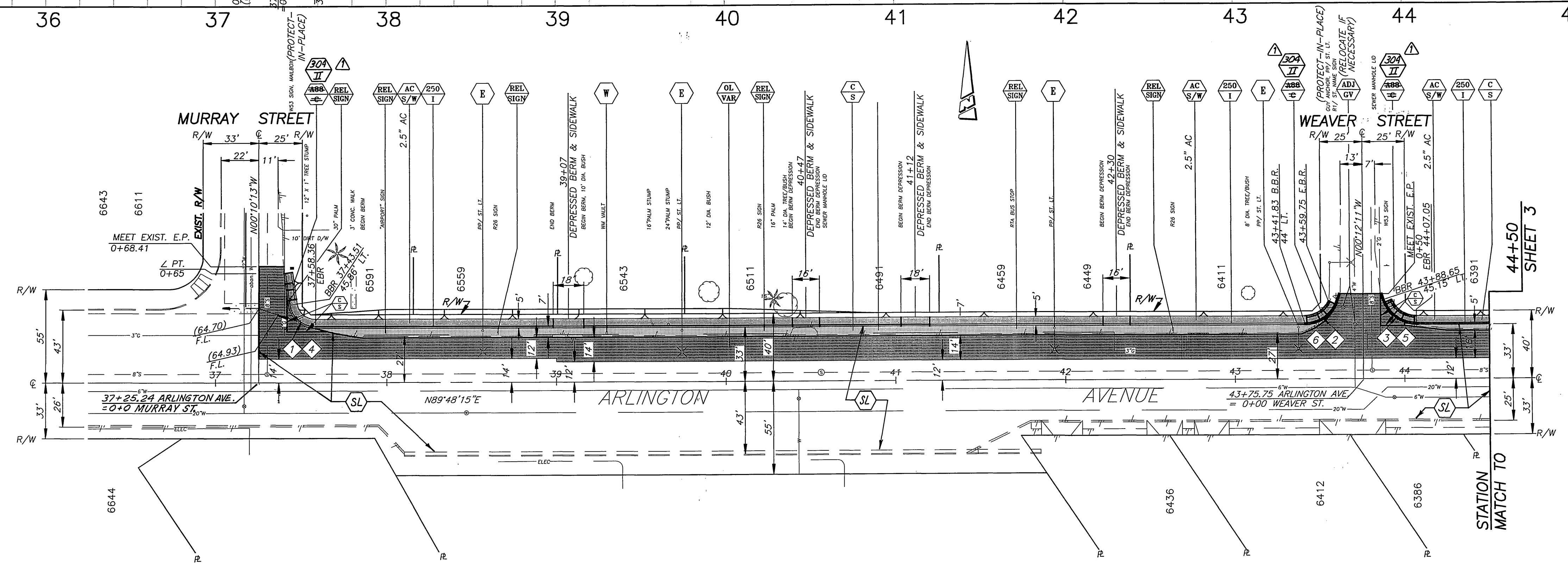
ACCT. NO. 9535930214
R-3485
SHEET 1 OF 3
FILE: MDICK\U:\DWG\R3485-01



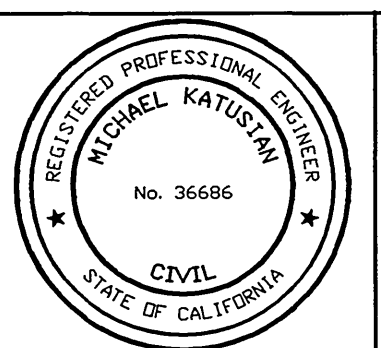
FB: LL44/77
 EL: 769.105
 BM: PK NAIL & CITY ENGR. TAG IN ST. LT. BASE, S'LY. CURB ON ARLINGTON AVE., 50' E'LY. OF D/W ECR, 325' E'LY. OF C.L. INT. AT MURRAY ST.



*: 1-1/2:1 CUT SLOPE BETWEEN STA. 48+41.5± AND STA. 50+00±



CURVE DATA				
Δ	R	L	T	
1	81°47'18"	15'	21.41'	12.99'
2	63°15'48"	20'	22.08'	12.32'
3	71°48'39"	20'	25.07'	14.48'
4 (FUT.)	90°01'32"	35'	54.98'	35'
5 (FUT.)	89°59'34"	35'	54.97'	35'
6 (FUT.)	90°00'26"	35'	54.98'	35'



ENGINEER IN RESPONSIBLE CHARGE
Michael Katusian
 MICHAEL KATUSIAN
 R.C.E. No. 36686 expires 6/30/00
 DATE 4/11/00

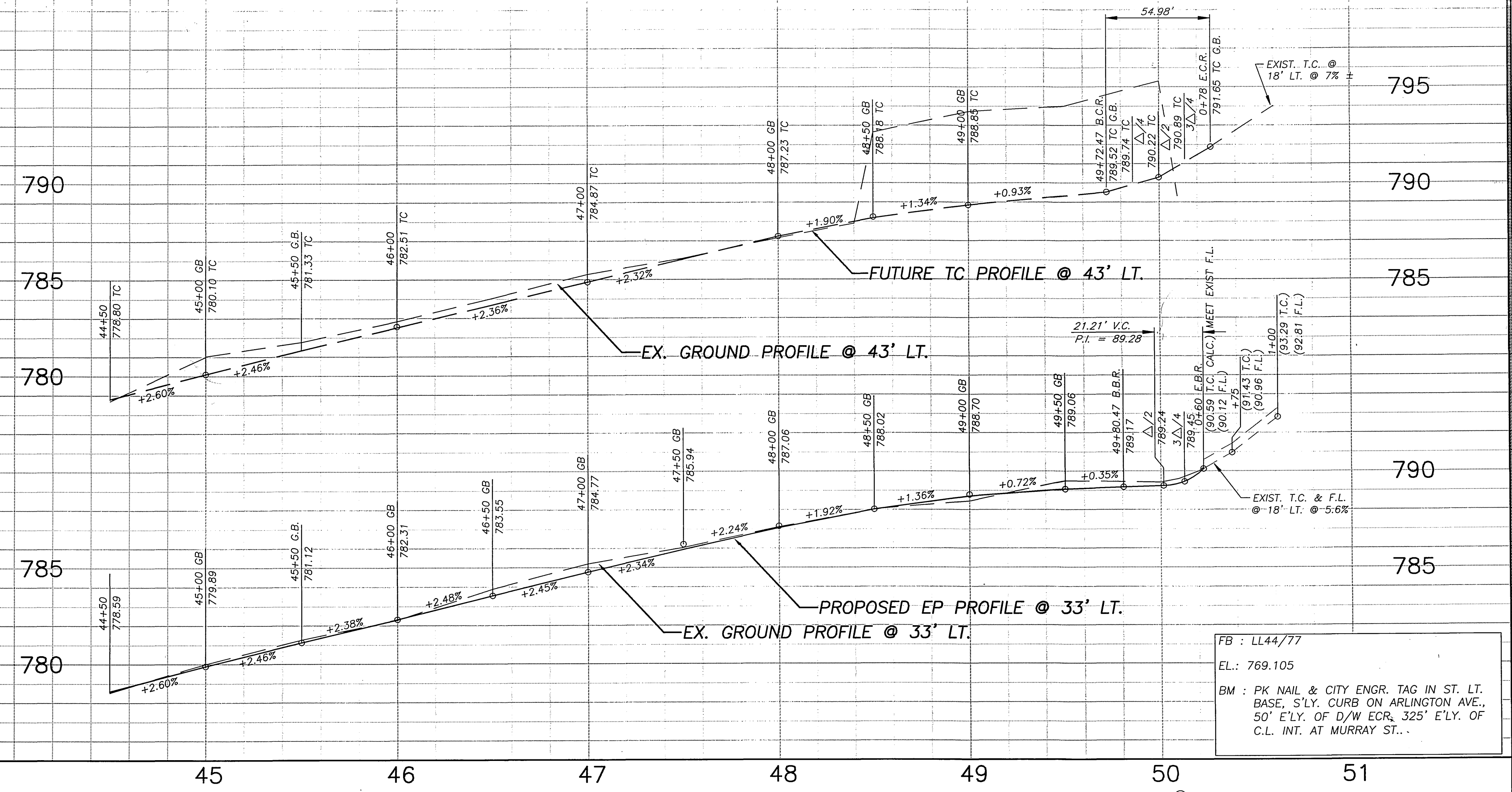
REVISIONS
 1. REVISED STATE STD. A88-C TO CITY STD. DWG. 304, TYPE II
 DESIGNED BY: FTL, C.S.S. DRAWN BY: RJM, LFL CHECKED BY:

CITY OF RIVERSIDE, CALIFORNIA
 PUBLIC WORKS DEPARTMENT
 APPROVED BY: [Signature] DATE: 7-10-00
 PUBLIC WORKS DIRECTOR

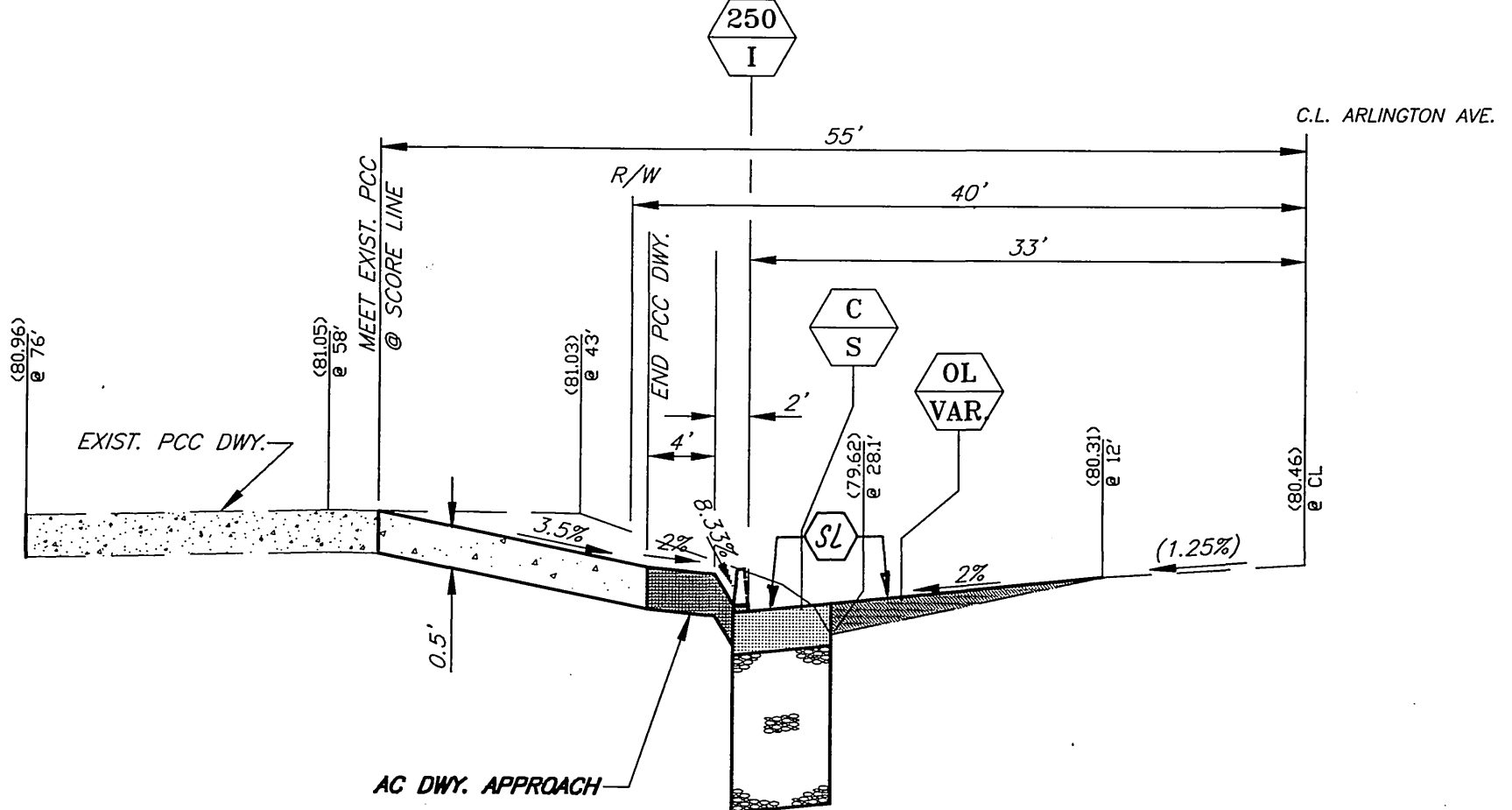
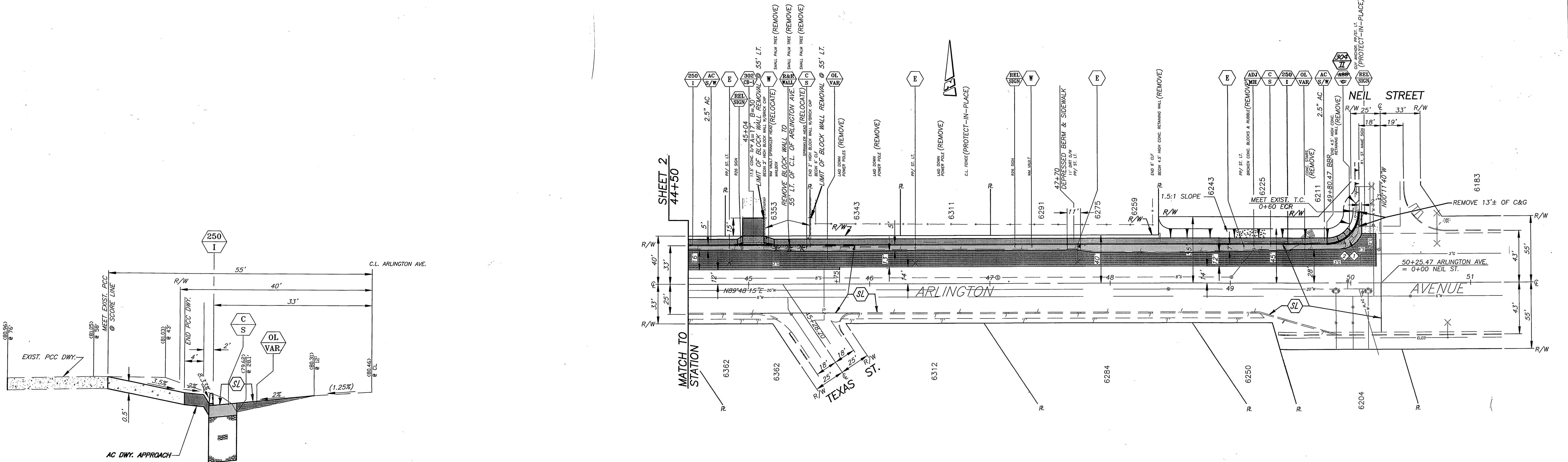
ARLINGTON AVENUE
 WIDENING
 MURRAY STREET TO NEIL STREET
 HORIZ. SCALE: 1" = 40' VERT. SCALE: 1" = 4'

ACCT. NO. 9535930214
R-3485
 SHEET 2 OF 3
 FILE: MDICK\U:\DWG\R3485-02

INDEXED 1-31-01 LHL

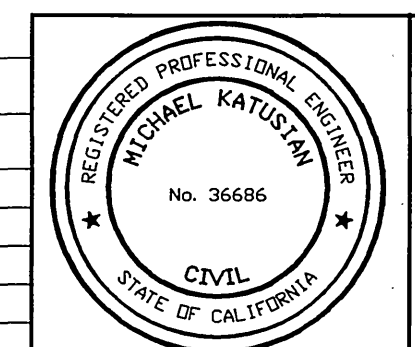


FB : LL44/77
 EL.: 769.105
 BM : PK NAIL & CITY ENGR. TAG IN ST. LT. BASE, S'LY. CURB ON ARLINGTON AVE., 50' E'LY. OF D/W ECR, 325' E'LY. OF C.L. INT. AT MURRAY ST...



PCC DWY. AT STA. 45+04 (NTS)

CURVE DATA				
Δ	R	L	T	(FUT.)
1	89°59'55"	27'	42.41'	27'
2	89°59'55"	35'	54.98'	35'



ENGINEER IN RESPONSIBLE CHARGE
 Michael Katusian
 MICHAEL KATUSIAN
 R.C.E. No. 36686 expires 6/30/00
 DATE 4/11/00

CITY OF RIVERSIDE, CALIFORNIA
 PUBLIC WORKS DEPARTMENT
 APPROVED BY: [Signature]
 BY: [Signature]
 DATE: 7-10-00
 DESIGNED BY: FYL, C.S.S., DRAWN BY: R.J.M., L.F.H., CHECKED BY: [Signature]

APPROVED BY: [Signature]
 BY: [Signature]
 DATE: 7-10-00
 ENGINEERING MANAGER: [Signature]
 PRINCIPAL ENGINEER: [Signature]
 TRAFFIC DIVISION: [Signature]
 SURVEYOR: [Signature]
 STREET SERVICES: [Signature]
 PUBLIC WORKS DEPARTMENT: [Signature]

ARLINGTON AVENUE
 WIDENING
 MURRAY STREET TO NEIL STREET
 HORIZ. SCALE: 1" = 40' VERT. SCALE: 1" = 4'

ACCT. NO. 9535930214
R-3485
 SHEET 3 OF 3
 FILE: MDICK\U\DWG\R3485-03