

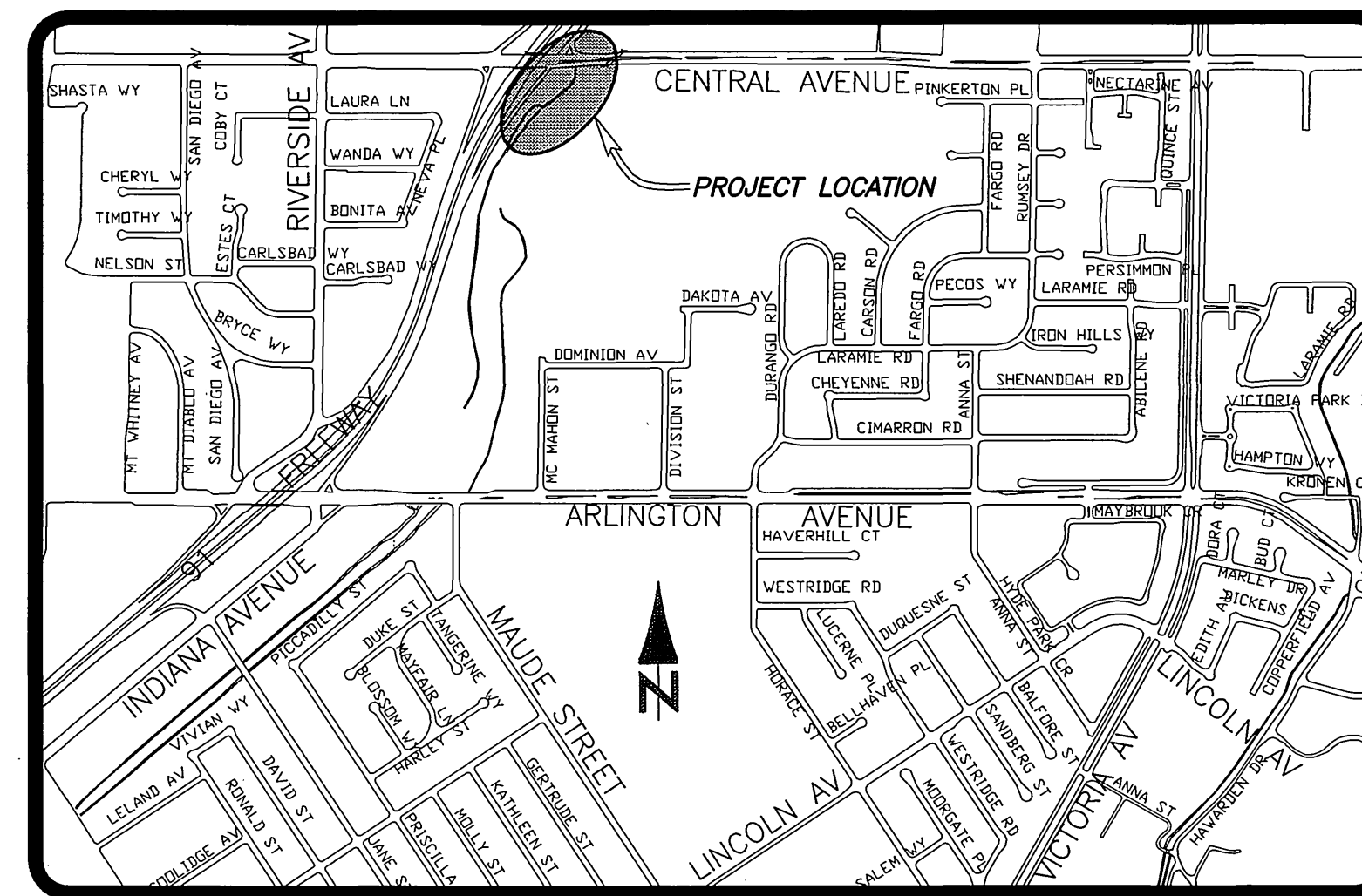
# RIVERSIDE



# CALIFORNIA

## PUBLIC WORKS DEPARTMENT

# 91 FREEWAY EASTBOUND CENTRAL AVENUE OFF-RAMP WIDENING



PROJECT LOCATION PLAN  
(NOT TO SCALE)

### CALTRANS GENERAL NOTES

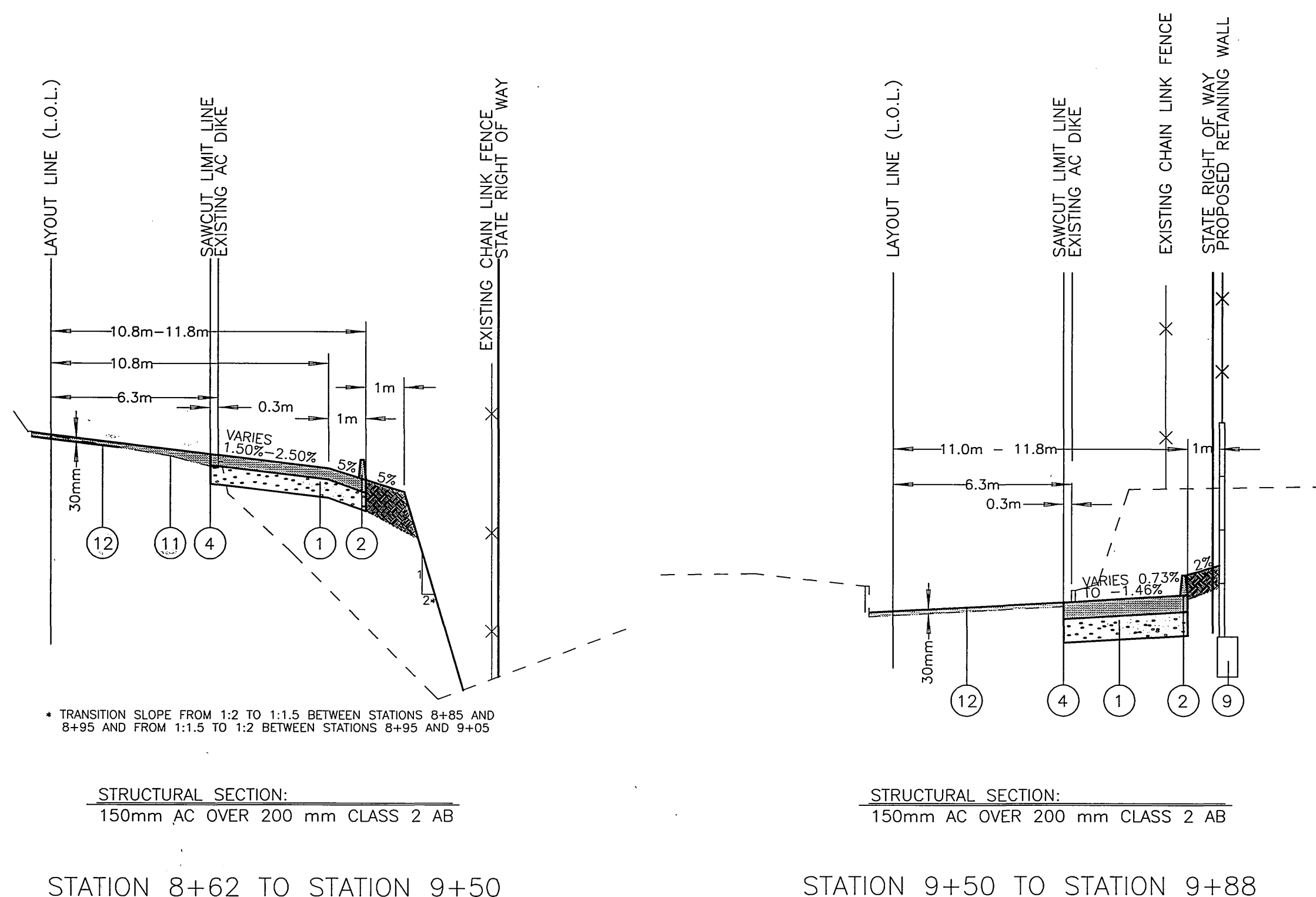
- 1) AN ENCROACHMENT PERMIT IS REQUIRED BEFORE ANY WORK MAY BEGIN IN OR NEAR THE STATE RIGHT-OF-WAY.
- 2) ALL WORK WITHIN THE STATE RIGHT-OF-WAY SHALL BE COMPLETED IN ACCORDANCE WITH THE STATE OF CALIFORNIA, DEPARTMENT OF TRANSPORTATION, METRIC STANDARD SPECIFICATIONS DATED JULY, 1995. SHOULD A CONFLICT ARISE BETWEEN THE CONTRACT PLANS, SPECIFICATIONS AND/OR DETAILS PREPARED BY THE PERMITTEE, THE STATE'S STANDARD SPECIFICATIONS SHALL GOVERN AS DETERMINED BY THE STATE'S REPRESENTATIVE (STANDARDS OTHER THAN STATE MUST BE PRE-APPROVED AND JUSTIFIED).
- 3) NO EQUIPMENT OR MATERIALS MAY BE STORED ON THE STATE RIGHT-OF-WAY.
- 4) ALL DISTURBED AREAS IN THE STATE RIGHT-OF-WAY MUST BE TREATED FOR EROSION CONTROL (HYDROSEEDING OR EQUIVALENT, OR AS DIRECTED BY THE STATE'S REPRESENTATIVE). THE RESPONSIBILITY FOR MAINTAINING EROSION CONTROL WILL NOT BE RELEASED UNTIL THE SEEDING IS WELL ESTABLISHED. THE CONTRACTOR WILL BE RESPONSIBLE FOR THE COST OF CALTRANS CLEANING ANY DRAINAGE STRUCTURES / CHANNELS WHICH HAVE BECOME CLUTTERED WITH DEBRIS AND / OR SILT AS A RESULT OF, OR CAUSED BY, THE CONSTRUCTION PROJECT.
- 5) ACCESS CONTROL ON THE FREEWAY WILL BE MAINTAINED AT ALL TIMES, I.E., THE WORK INSIDE THE STATE RIGHT-OF-WAY MUST BE FENCED OFF WITH NO ACCESS TO THE WORK AREA FROM THE FREEWAY.
- 6) NO FREEWAY RAMP OR FREEWAY LANES MAY BE CLOSED OR OBSTRUCTED AT ANYTIME UNLESS SPECIFICALLY ALLOWED PER THE ENCROACHMENT PERMIT AND/OR AS DIRECTED BY THE STATE'S REPRESENTATIVE.
- 7) ALL FENCE RELOCATED TO FACILITATE THE CONSTRUCTION OF THIS PROJECT INSIDE THE STATE RIGHT-OF-WAY SHALL BE REPLACED WITH 1.83m CHAIN LINK FENCE AS SHOWN IN THE STATE'S STANDARD PLANS OR WITH A BLOCK WALL IN ACCORDANCE WITH ACCEPTABLE LOCAL AGENCY STANDARDS.
- 8) WHERE TYPE CL-6 FENCE DOES NOT EXIST, THE STATE RIGHT-OF-WAY FENCE MUST BE UPGRADED TO TYPE CL-6 FENCE, AS SHOWN IN THE STANDARD PLANS.
- 9) WHERE SURVEY MONUMENTS EXIST, SUCH MONUMENTS SHALL BE PROTECTED OR SHALL BE REFERENCED AND RESET PURSUANT TO BUSINESS AND PROFESSIONS CODE, SECTIONS 8700 TO 8805 (LAND SURVEYOR'S ACT).
- 10) ALL SIGNING, STRIPING AND PAVEMENT MARKINGS WITHIN STATE RIGHT-OF-WAY SHALL BE IN CONFORMANCE WITH THE CURRENT EDITION OF THE TRAFFIC MANUAL, PUBLISHED BY THE STATE OF CALIFORNIA, DEPARTMENT OF TRANSPORTATION, AND THE SPECIAL PROVISIONS. ALL PAVEMENT MARKINGS SHALL BE THERMOPLASTIC UNLESS OTHERWISE NOTED ON THE PLANS.
- 11) THE EXACT LOCATION OF ALL SIGNS SHALL BE DETERMINED IN THE FIELD BY THE STATE'S REPRESENTATIVE.
- 12) ALL CONFLICTING STRIPING AND PAVEMENT MARKINGS NOT SHOWN ON THE PLANS SHALL BE REMOVED FROM THE PAVEMENT BY SANDBLASTING BY THE CONTRACTOR.
- 13) ALL CONFLICTING SIGNS SHALL BE EITHER REMOVED OR RELOCATED BY THE CONTRACTOR. RELOCATABLE SIGNS SHALL BE INSTALLED AS SPECIFIED ON THE PLANS OR AS DETERMINED IN THE FIELD BY THE STATE'S REPRESENTATIVE.
- 14) ALL SIGNS, ROADSIDE MARKERS, ELECTROLIERS, ETC., SHALL BE PROTECTED AND/OR REPLACED IN-KIND ACCORDING TO THE CURRENT STATE STANDARD PLANS AND THE CURRENT TRAFFIC MANUAL, AT NO COST TO THE STATE.

### SPECIFIC CONSTRUCTION NOTES

- 1) CONSTRUCT PAVEMENT STRUCTURAL SECTION OF 150 mm DGAC OVER 200 mm CLASS 2 AGGREGATE BASE.
- 2) CONSTRUCT TYPE C ASPHALT CONCRETE DIKE PER STATE STANDARD PLAN A87.
- 3) CONSTRUCT TYPE A2-150 PCC CURB AND GUTTER PER STATE STANDARD PLAN A87.
- 4) SAWCUT EXISTING AC TO PROVIDE A STRAIGHT AND SMOOTH EDGE.
- 5) CONSTRUCT 100 mm THICK PCC SIDEWALK.
- 6) CONSTRUCT WHEEL CHAIR RAMP PER DETAIL 'A' ON SHEET 3.
- 7) CONSTRUCT CATCH BASIN TYPR GOL-2.1 PER STATE STANDARD PLAN D72.
- 8) CONSTRUCT 600 mm RCP PER STATE STANDARD PLAN A62D AND CONNECT TO EXISTING 600mm RCP PER DETAIL 'C' ON SHEET 3.
- 9) CONSTRUCT TYPE 6B SPLIT FACE MASONRY RETAINING WALL PER STANDARD PLAN B3-11. PROFILE WALL PER DETAIL 'E' ON SHEET 3. BLOCK COLOR SHALL MATCH EXISTING.
- 10) RELOCATE EXISTING 2.44 m CHAIN LINK FENCE AND BARBED WIRE TO TOP OF RETAINING WALL.
- 11) CONSTRUCT VARIABLE THICKNESS ASPHALT CONCRETE OVERLAY. GRIND EXISTING AC PAVEMENT AS REQUIRED TO PROVIDE MINIMUM 30mm THICK AC OVERLAY.
- 12) GRIND EXISTING ASPHALT CONCRETE PAVEMENT TO A DEPTH OF 30mm AND CONSTRUCT 30mm ASPHALT CONCRETE OVERLAY.

### GENERAL CONSTRUCTION NOTES

1. EXISTING UTILITIES SHOWN ON THE PLAN, ARE PLOTTED FROM UTILITY RECORDS. THE CONTRACTOR IS REQUIRED TO TAKE DUE PRECAUTIONARY MEASURES TO LOCATE AND PROTECT ALL UTILITIES WHETHER OR NOT SHOWN ON THIS PLAN.
2. PRIME CONTRACTORS BIDDING THIS WORK SHALL HAVE A CLASS "A" LICENSE.
3. ALL ELEVATIONS SHOWN ON THE PLANS SHALL BE STAKED IN THE FIELD.
4. CONFLICTING UTILITIES IN THE CONSTRUCTION AREA SHALL BE RELOCATED OR ABANDONED.
5. CONTRACTOR SHALL GRADE TO INSURE PROPER DRAINAGE AT TOE OF PROPOSED SLOPE.
6. EXISTING CHAIN LINK FENCE REMOVED TO FACILITATE SLOPE GRADING SHALL BE RESTORED TO ITS ORIGINAL LOCATION AND CONDITION AT CONTRACTOR'S EXPENSE.



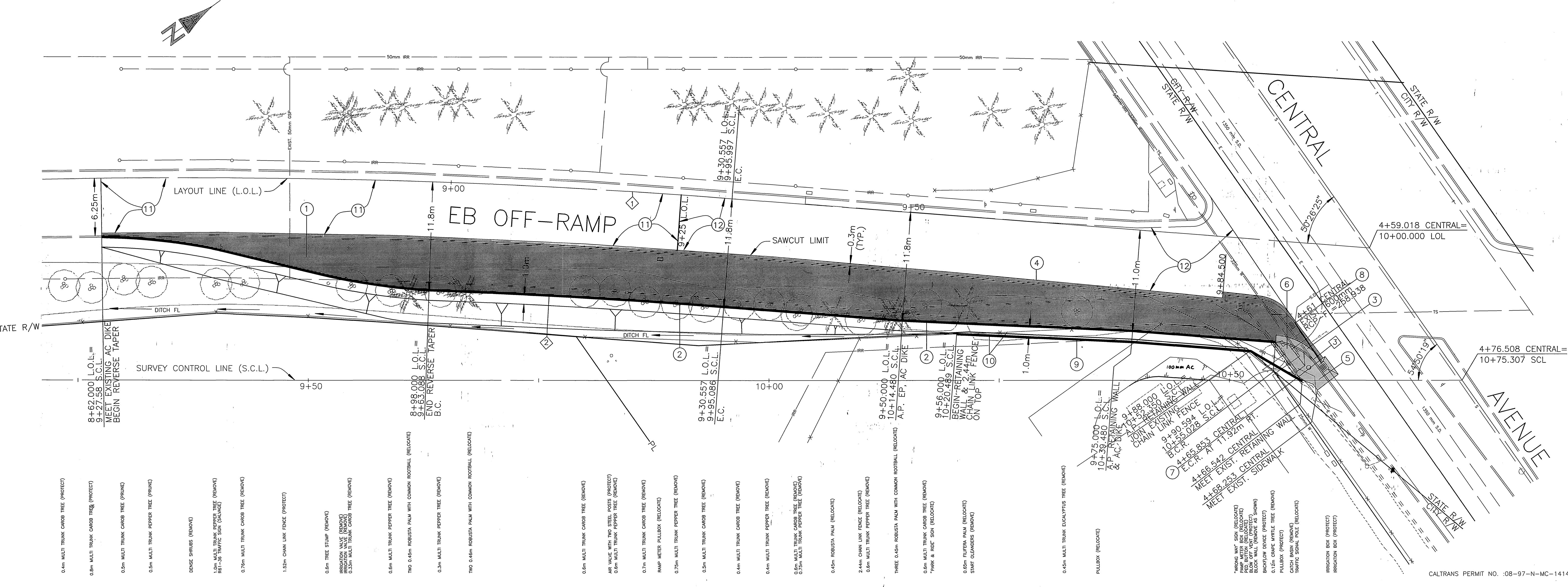
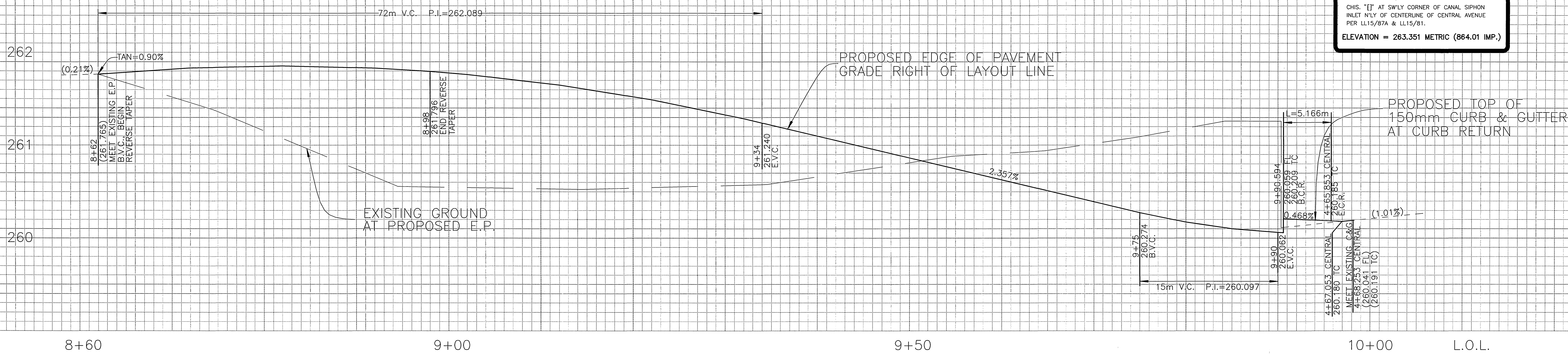
### TYPICAL CROSS SECTIONS

 ENGINEER IN RESPONSIBLE CHARGE PHILIP L. HANNAWI R.C.E. No. 44747 Expires 3/31/2002 DATE 3/27/98	CITY OF RIVERSIDE, CALIFORNIA PUBLIC WORKS DEPARTMENT	91 FREEWAY EASTBOUND CENTRAL AVENUE OFF-RAMP WIDENING	ACCOUNT NUMBER 432-541500-440302-30364
			R-3486
DESIGNED BY P.H. DRAWN BY P.H. CHECKED BY	APPROVED BY: <i>R.M. Scott</i> PUBLIC WORKS DIRECTOR DATE 9-1-98	SHEET 1 OF 6	INDEXED 10-21-98 L/H

CALTRANS PERMIT NO.: 08-97-N-MC-1414

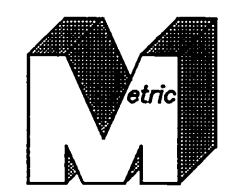


**BENCHMARK**  
 CHIS. "I" AT SW'LY CORNER OF CANAL SIPHON  
 INLET N'LY OF CENTERLINE OF CENTRAL AVENUE  
 PER LL15/87A & LL15/81.  
 ELEVATION = 263.351 METRIC (864.01 IMP.)



- 0.4m MULTI TRUNK CAROB TREE (PROTECT)
- 0.6m MULTI TRUNK CAROB TREE (PROTECT)
- 0.5m MULTI TRUNK CAROB TREE (REMOVE)
- 0.5m MULTI TRUNK PEPPER TREE (REMOVE)
- 0.7m MULTI TRUNK PEPPER TREE (REMOVE)
- 1.0m MULTI TRUNK PEPPER TREE (REMOVE)
- 0.7m MULTI TRUNK CAROB TREE (REMOVE)
- 1.52m CHAIN LINK FENCE (PROTECT)
- 0.6m TREE STUMP (REMOVE)
- 0.6m MULTI TRUNK CAROB TREE (REMOVE)
- 0.3m MULTI TRUNK CAROB TREE (REMOVE)
- 0.6m MULTI TRUNK PEPPER TREE (REMOVE)
- TWO 0.45m ROBUSTA PALM WITH COMMON ROOTBALL (RELOCATE)
- 0.3m MULTI TRUNK PEPPER TREE (REMOVE)
- TWO 0.45m ROBUSTA PALM WITH COMMON ROOTBALL (RELOCATE)
- 0.6m MULTI TRUNK CAROB TREE (REMOVE)
- AIR VALVE WITH TWO STEEL POSTS (PROTECT)
- 0.6m MULTI TRUNK PEPPER TREE (REMOVE)
- 0.7m MULTI TRUNK CAROB TREE (REMOVE)
- RAMP METERS PULLBOX (RELOCATE)
- 0.7m MULTI TRUNK PEPPER TREE (REMOVE)
- 0.5m MULTI TRUNK CAROB TREE (REMOVE)
- 0.4m MULTI TRUNK CAROB TREE (REMOVE)
- 0.6m MULTI TRUNK PEPPER TREE (REMOVE)
- 0.5m MULTI TRUNK CAROB TREE (REMOVE)
- 0.45m ROBUSTA PALM (RELOCATE)
- 2.4m CHAIN LINK FENCE (RELOCATE)
- 0.6m MULTI TRUNK PEPPER TREE (REMOVE)
- THREE 0.45m ROBUSTA PALM WITH COMMON ROOTBALL (RELOCATE)
- 0.6m MULTI TRUNK CAROB TREE (REMOVE)
- "PARK & RIDE" SIGN (RELOCATE)
- 0.6m FLUPERA PALM (RELOCATE)
- STAFF ORNAMENT (REMOVE)
- 0.45m MULTI TRUNK EUCALYPTUS TREE (REMOVE)
- PULLBOX (RELOCATE)
- 0.45m MULTI TRUNK CAROB TREE (REMOVE)
- 0.15m CHAIN LINK FENCE (RELOCATE)
- 0.15m CHAIN LINK FENCE (RELOCATE)
- 0.15m CHAIN LINK FENCE (RELOCATE)
- IRRIGATION BOX (PROTECT)
- IRRIGATION BOX (PROTECT)

CURVE DATA					
Station	R (m)	L (m)	T (m)	P.I.	E.C.
1	14' 34" 11.0'	762.000	193.770	97.410	9+95.086
2	2' 26' 52.8"	750.200	32.053	16.029	9+95.086
3	48' 31' 31.8"	6.100	5.166	2.749	9+95.086



**ENGINEER IN RESPONSIBLE CHARGE**  
 PHILIP L. HANNAWI  
 R.C.E. No. 44747 Expires 3/31/2002  
 DATE 3/27/98



DESIGNED BY P.H. DRAWN BY P.H. CHECKED BY

CITY OF RIVERSIDE, CALIFORNIA  
 PUBLIC WORKS DEPARTMENT

APPROVED BY: *R.M. Smith*  
 PUBLIC WORKS DIRECTOR

DATE 9-1-98

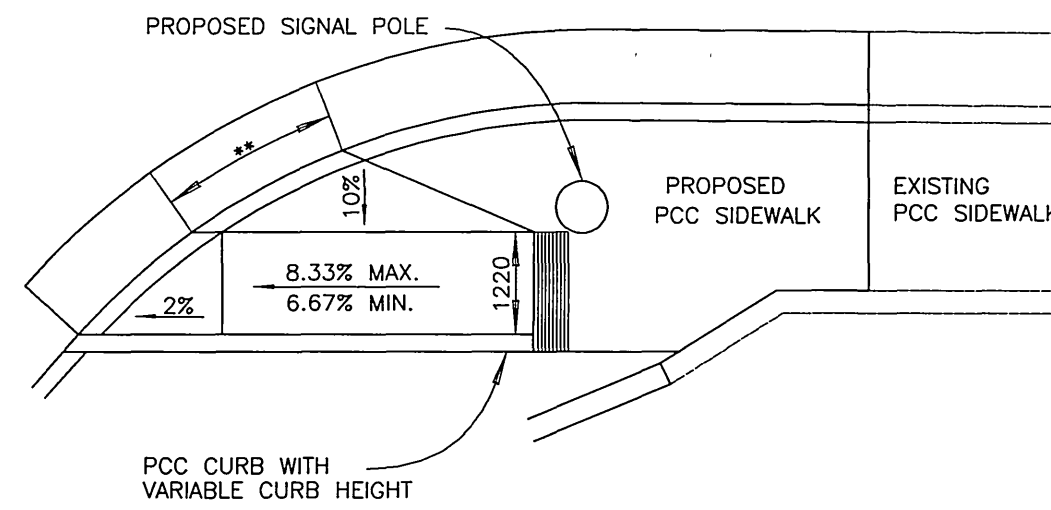
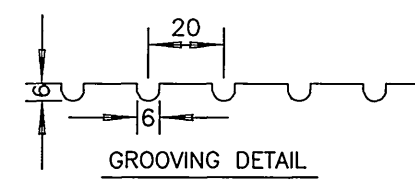
91 FREEWAY EASTBOUND  
 CENTRAL AVENUE  
 OFF-RAMP WIDENING

HORIZONTAL SCALE: 1:200 VERTICAL SCALE: 1:20

ACCOUNT NUMBER 432-541500-440302-30364  
**R-3486**  
 SHEET 2 OF 6



\*\* TRANSITION GUTTER CROSS SLOPE FROM THE STANDARD 6.5% AT THE FULL HEIGHT CURB TO 5% AT 0% C.F.

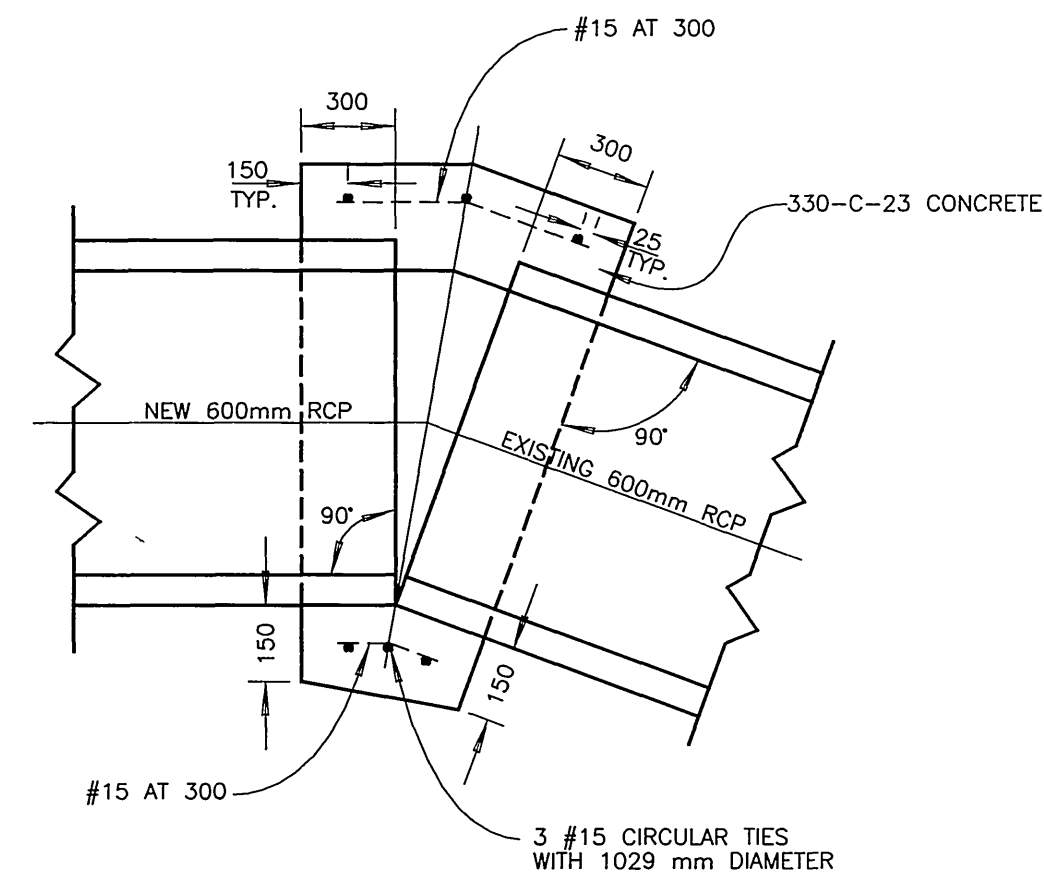


NOTES FOR DETAIL 'A'

- 1 CONCRETE SHALL BE CLASS 310-C-17.
- 2 THE WHEELCHAIR RAMP SHALL BE POURED MONOLITHICALLY WITH THE ADJACENT SIDEWALK.
- 3 THE RAMP SHALL HAVE A 300 mm WIDE BORDER WITH 6 mm GROOVES APPROXIMATELY 20 mm C/C. SEE GROOVING DETAIL. THE SURFACE OF THE RAMP SHALL HAVE A TRANSVERSE BROOMED SURFACE TEXTURE ROUGHER THAN THE SURROUNDING SIDEWALK.

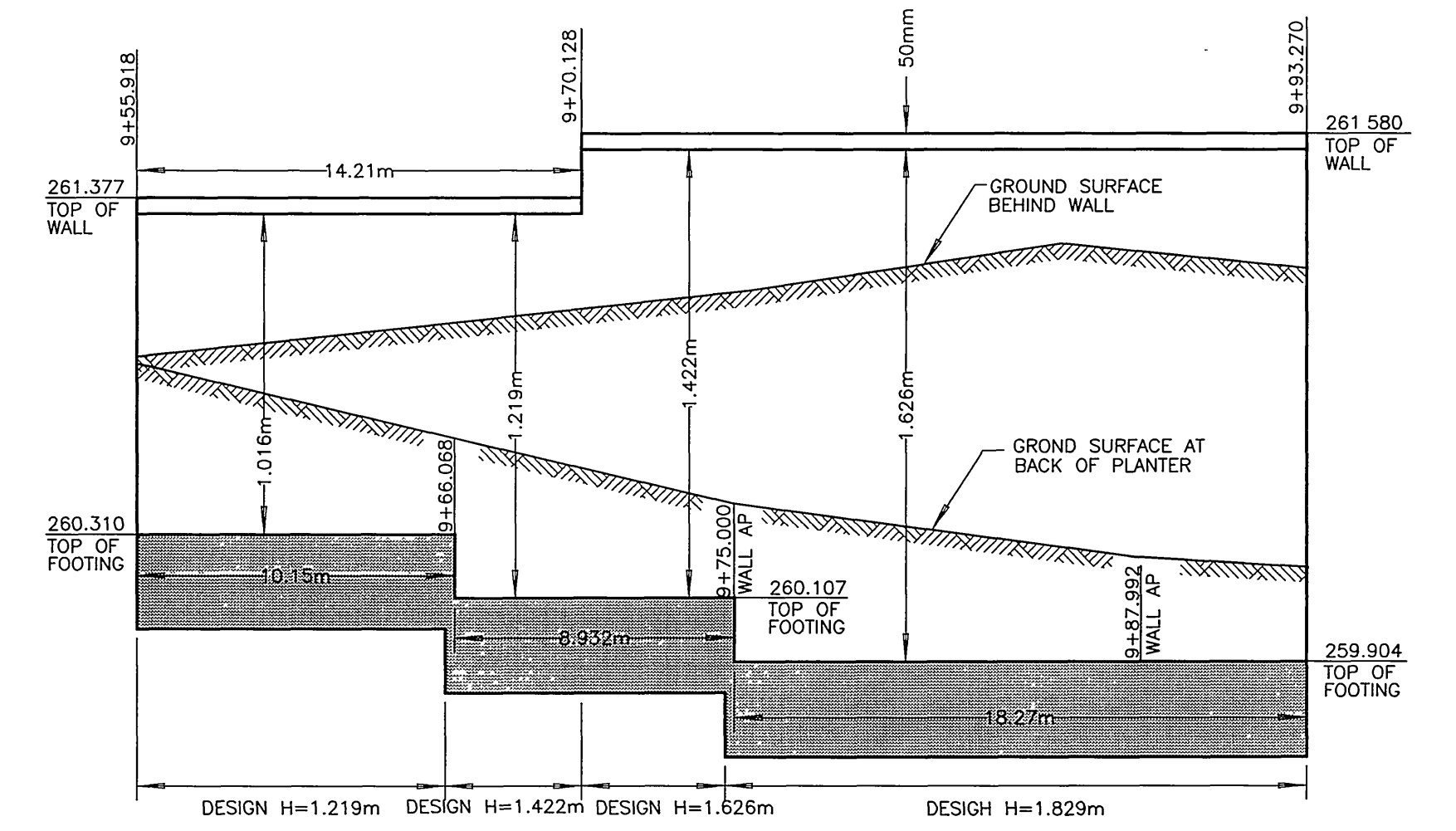
ALL DIMENSIONS ARE IN MILLIMETERS UNLESS NOTED.

DETAIL 'A'  
WHEEL CHAIR RAMP



ALL DIMENSIONS ARE IN MILLIMETERS UNLESS NOTED.

DETAIL 'C'  
CONCRETE COLLAR

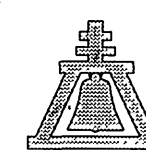
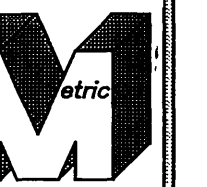


NOTE: DESIGN H IS INCREASED TO COMPENSATE FOR TRAFFIC SURCHARGE

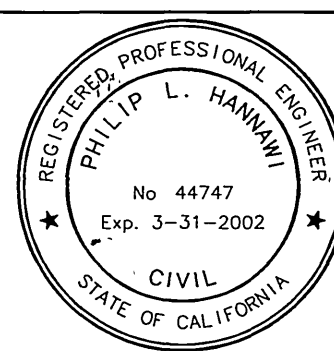
HORIZONTAL SCALE = 1:200  
VERTICAL SCALE = 1:20

DETAIL 'E'  
MASONRY RETAINING WALL

CALTRANS PERMIT NO. :08-97-N-MC-1414



ENGINEER IN RESPONSIBLE CHARGE  
PHILIP L. HANNAWI  
R.C.E. No 44747 Expires 3/31/2002  
DATE 3/27/98



DESIGNED BY P.H. DRAWN BY P.H. CHECKED BY

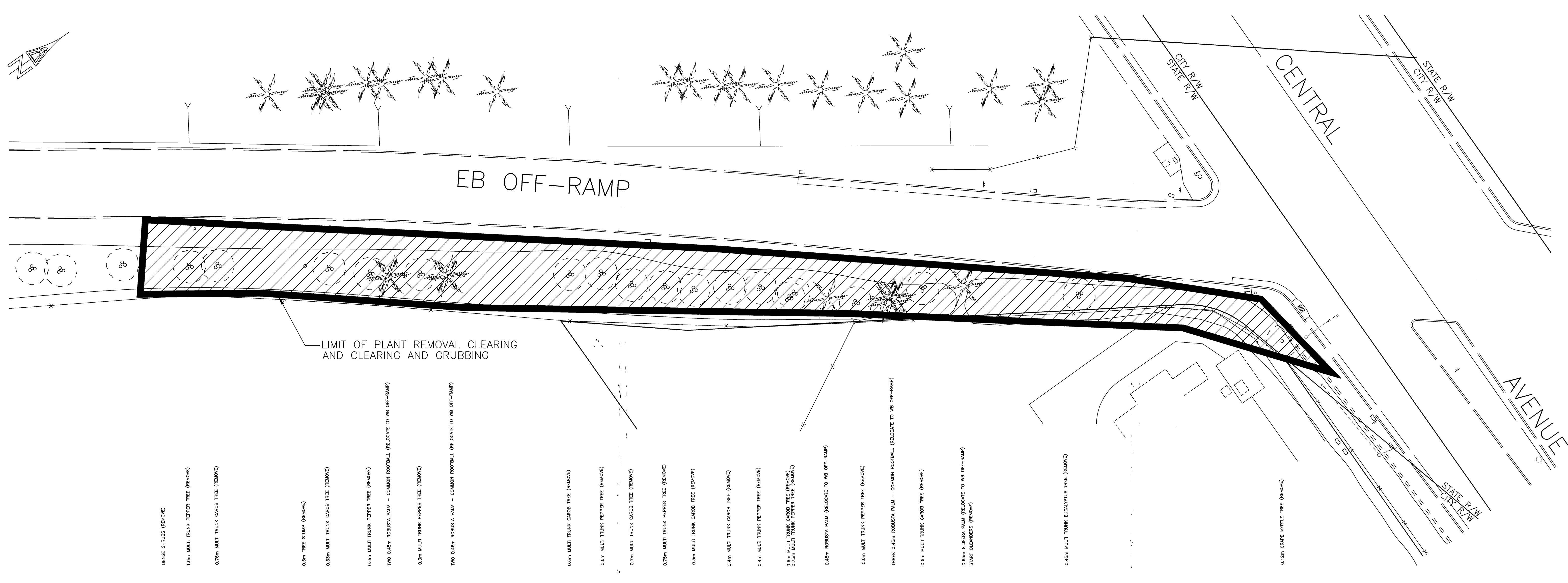
CITY OF RIVERSIDE, CALIFORNIA  
PUBLIC WORKS DEPARTMENT

APPROVED BY	BY	DATE	APPROVED BY
PRINCIPAL ENGINEER	<i>[Signature]</i>		<i>R Mc Brath</i>
STREET DIVISION			PUBLIC WORKS DIRECTOR
TRAFFIC DIVISION			
SURVEYOR	<i>[Signature]</i>		
MARK		REVISIONS	APPR DATE

91 FREEWAY EASTBOUND  
CENTRAL AVENUE  
OFF-RAMP WIDENING

ACCOUNT NUMBER  
432-541500-440302-30364  
R-3486  
SHEET 3 OF 6

INDEXED 10-21-98 LHH



- DENSE SHRUBS (REMOVE)
- 1.5m MULTI TRUNK PEPPER TREE (REMOVE)
- 0.75m MULTI TRUNK CAROB TREE (REMOVE)
- 0.6m TREE STUMP (REMOVE)
- 0.35m MULTI TRUNK CAROB TREE (REMOVE)
- 0.6m MULTI TRUNK PEPPER TREE (REMOVE)
- TWO 0.45m ROBUSTA PALM - COMMON ROOTBALL (RELOCATE TO WB OFF-RAMP)
- 0.3m MULTI TRUNK PEPPER TREE (REMOVE)
- TWO 0.45m ROBUSTA PALM - COMMON ROOTBALL (RELOCATE TO WB OFF-RAMP)
- 0.6m MULTI TRUNK CAROB TREE (REMOVE)
- 0.6m MULTI TRUNK PEPPER TREE (REMOVE)
- 0.7m MULTI TRUNK CAROB TREE (REMOVE)
- 0.75m MULTI TRUNK PEPPER TREE (REMOVE)
- 0.5m MULTI TRUNK CAROB TREE (REMOVE)
- 0.4m MULTI TRUNK CAROB TREE (REMOVE)
- 0.4m MULTI TRUNK PEPPER TREE (REMOVE)
- 0.6m MULTI TRUNK CAROB TREE (REMOVE)
- 0.5m MULTI TRUNK PEPPER TREE (REMOVE)
- THREE 0.45m ROBUSTA PALM - COMMON ROOTBALL (RELOCATE TO WB OFF-RAMP)
- 0.6m MULTI TRUNK CAROB TREE (REMOVE)
- 0.65m FILICIA PALM (RELOCATE TO WB OFF-RAMP) START CLEANERS (REMOVE)
- 0.45m MULTI TRUNK EUCALYPTUS TREE (REMOVE)
- 0.15m CRME MYRTLE TREE (REMOVE)

LIMIT OF PLANT REMOVAL CLEARING AND CLEARING AND GRUBBING

**GENERAL AND CONSTRUCTION NOTES:**

1. ALL PLANT REMOVAL AND RELOCATION WORK WITHIN STATE RIGHT-OF-WAY SHALL COMPLY WITH THE STATE OF CALIFORNIA, DEPARTMENT OF TRANSPORTATION, SECTION 20-4 'HIGHWAY PLANTING' OF THE SPECIFICATIONS DATED JULY 1995.
2. EXISTING SHRUB AND GROUND COVER LOCATED WITHIN GRADING LIMITS SHALL BE REMOVED AS SHOWN ON THIS PLAN (HATCHED AREA).
3. ALL PLANTING MATERIAL REMOVED OUTSIDE OF GRADING LIMITS SHALL BE REPLACED IN KIND, OR WITH SIMILAR PLANT MATERIAL AS SHOWN ON THIS PLAN.
4. EXACT LOCATIONS OF NEW OR RELOCATED TREES, SHRUBS AND GROUND COVER SHALL BE DETERMINED BY THE STATE INSPECTOR AT THE CONSTRUCTION SITE.

CALTRANS PERMIT NO. :08-97-N-MC-1414



ENGINEER IN RESPONSIBLE CHARGE  
 PHILIP L. HANNAWI  
 R.C.E. No. 44747 Expires 3/31/2002  
 DATE 3/27/98



MARK	REVISIONS	APPR.	DATE

CITY OF RIVERSIDE, CALIFORNIA  
 PUBLIC WORKS DEPARTMENT

APPROVED BY	BY	DATE
PRINCIPAL ENGINEER	<i>[Signature]</i>	4-1-98
STREET DIVISION		
TRAFFIC DIVISION		
SURVEYOR		

DESIGNED BY P.H. DRAWN BY P.H. CHECKED BY

APPROVED BY  
 R.M. Smith  
 PUBLIC WORKS DIRECTOR  
 DATE 4-1-98

ACCOUNT NUMBER  
 432-541500-440302-30364  
**R-3486**  
 SHEET 4 OF 6

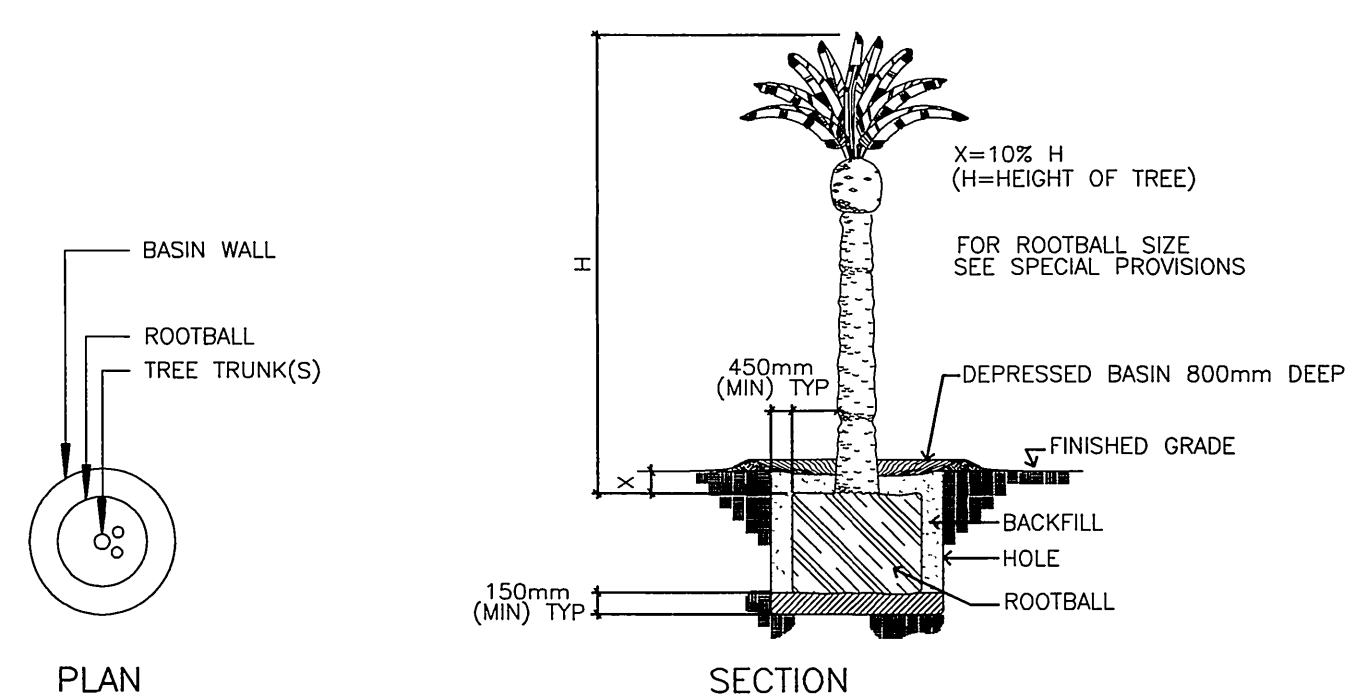
HORIZONTAL SCALE: 1:200

INDEXED 10-21-98 4/4

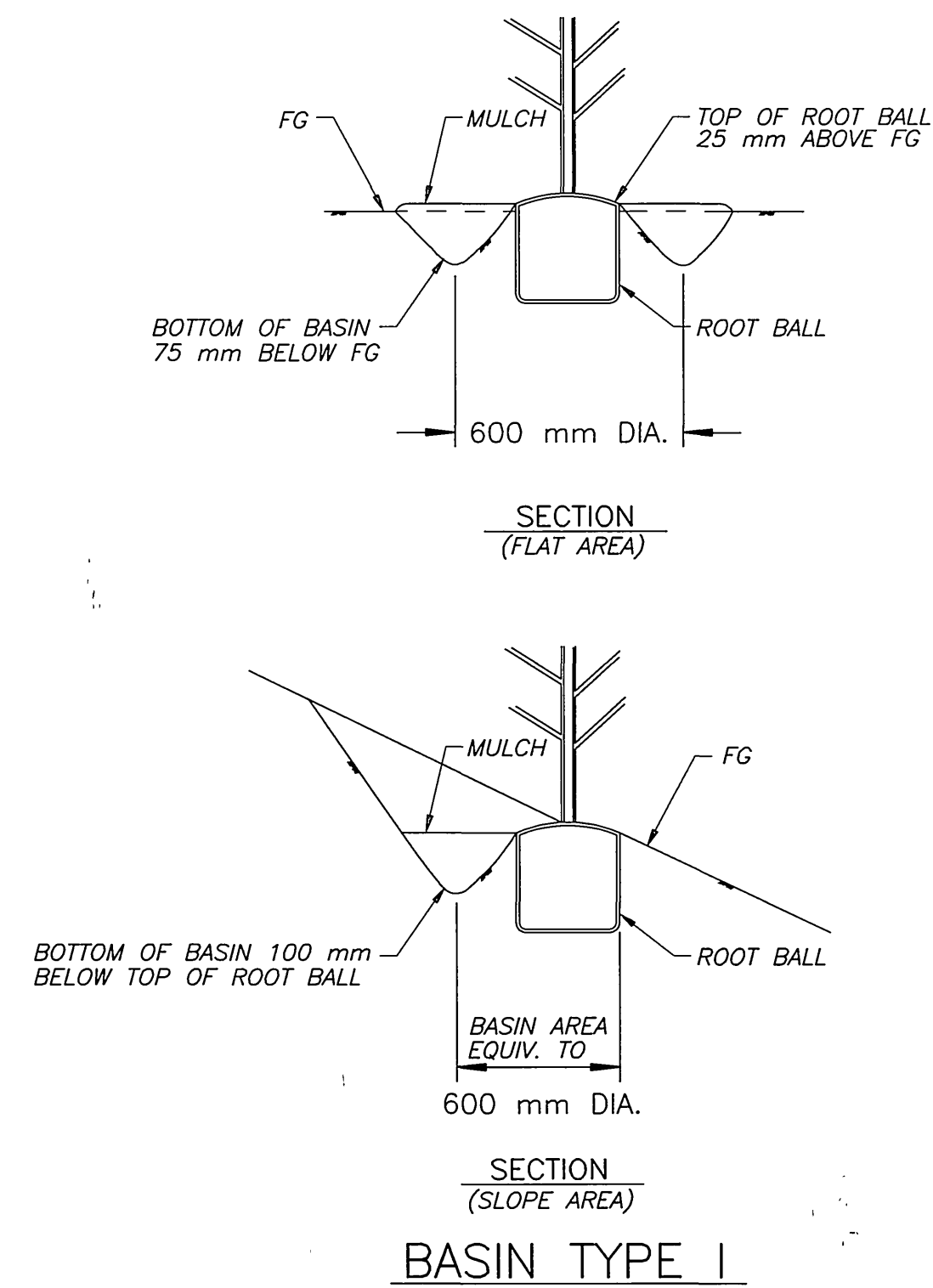
PLANT LIST AND PLANTING SPECIFICATIONS

PLANT GROUP	PLANT NO.	SYMBOL	BOTANICAL NAME	COMMON NAME	SIZE	QUANTITY EACH	HOLE SIZE DIA DEPTH	BASIN TYPE	IRON SULFATE	SOIL AMEND	COMMERTIAL FERTILIZER PLANTING ESTE	MULCH DEPTH	STAKING	PLANTING LIMITS (m) FROM PAVED SURFACE CENTER					REMARKS	
														TRUCKWAY	PVMT FENCE WALL	DITCH	ON	OFF		
U	1	⊕	PHOTINIA FRASERI	ROSACEAE	NO. 15	34	① ②	I		0.11 m <sup>3</sup>	0.25 kg	0.25 kg	80 mm		1.2	2.5		2.0	2.5	SHRUB

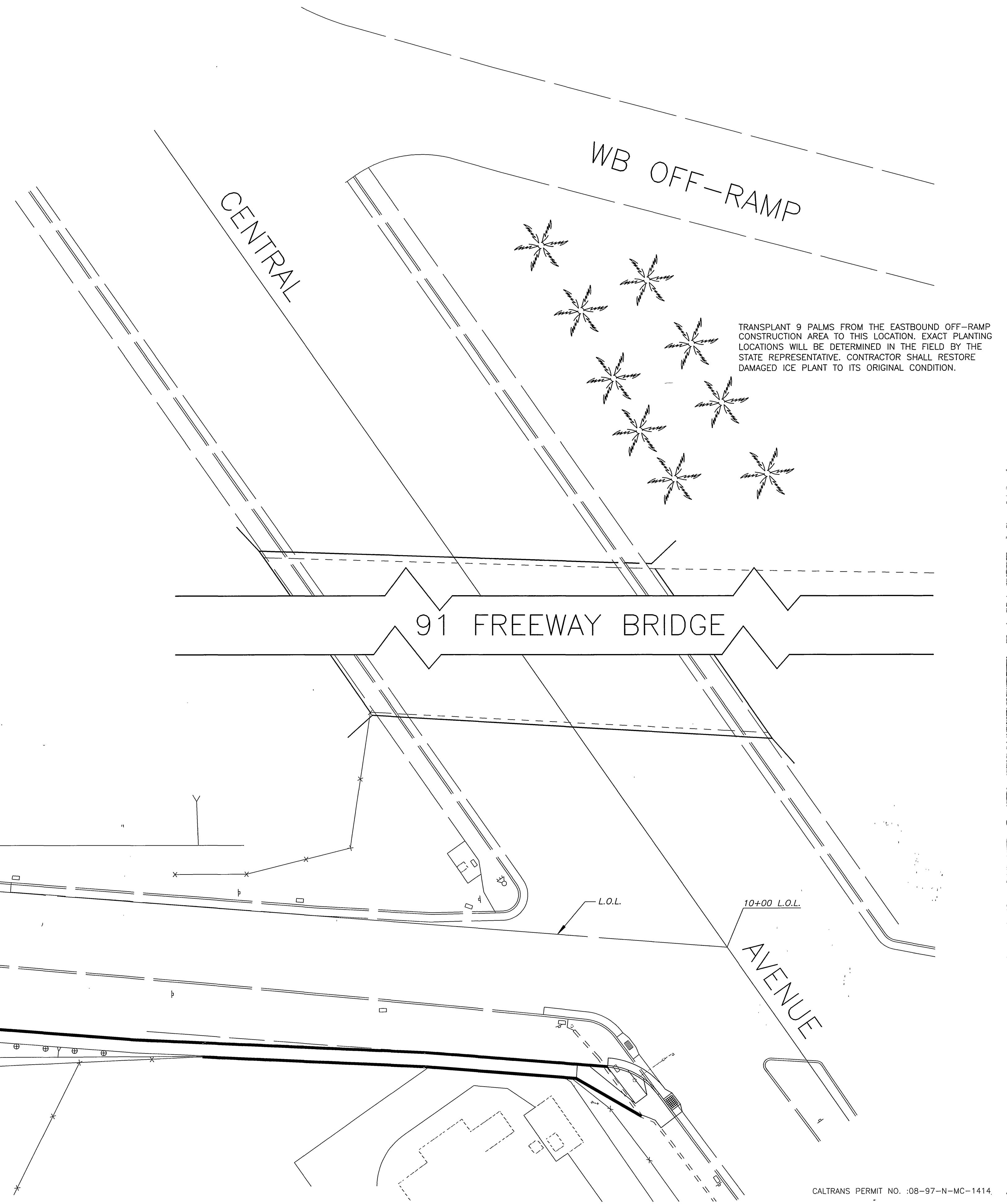
- ① QUANTITIES SHOWN ARE "PER PLANT" UNLESS SHOWN AS SQUARE METER APPLICATION RATE
- ② SUFFICIENT TO RECEIVE ROOT BALL
- ③ DOES NOT APPLY TO MULCH AREAS
- ④ AS SHOWN ON PLANS
- ⑤ UNLESS OTHERWISE SHOWN ON PLANS
- ⑥ SEE DETAIL
- ⑦ SEE SPECIAL PROVISION



TRANSPLANTED PALM TREE LEVEL AREA



BASIN TYPE I

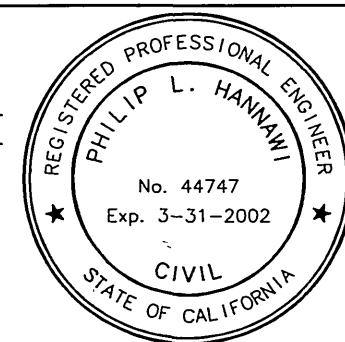


GENERAL AND CONSTRUCTION NOTES:

- ALL PLANTING WORK WITHIN STATE RIGHT-OF-WAY SHALL COMPLY WITH THE STATE OF CALIFORNIA, DEPARTMENT OF TRANSPORTATION, SECTION 20-4 'HIGHWAY PLANTING' OF THE SPECIFICATIONS DATED JULY 1995.
- EXISTING SHRUB AND GROUND COVER LOCATED WITHIN GRADING LIMITS SHALL BE REMOVED AND REPLACED WITH GROUND COVER AS SHOWN ON THIS PLAN.
- ALL PLANTING MATERIAL REMOVED OUTSIDE OF GRADING LIMITS SHALL BE REPLACED IN KIND, OR WITH SIMILAR PLANT MATERIAL AS SHOWN ON THIS PLAN.
- EXACT LOCATIONS OF RELOCATED TREES AND GROUND COVER SHALL BE DETERMINED BY THE STATE INSPECTOR AT THE CONSTRUCTION SITE.



ENGINEER IN RESPONSIBLE CHARGE  
 PHILIP L. HANNAWAY  
 R.C.E. No. 44747 Expires 3/31/2002  
 DATE 3/27/98



REVISOR: PHILIP L. HANNAWAY  
 DATE: 3/27/98  
 DESIGNED BY: P.H. DRAWN BY: P.H. CHECKED BY:

CITY OF RIVERSIDE, CALIFORNIA  
 PUBLIC WORKS DEPARTMENT  
 APPROVED BY: R.M. Smith  
 PUBLIC WORKS DIRECTOR  
 DATE: 9-1-98

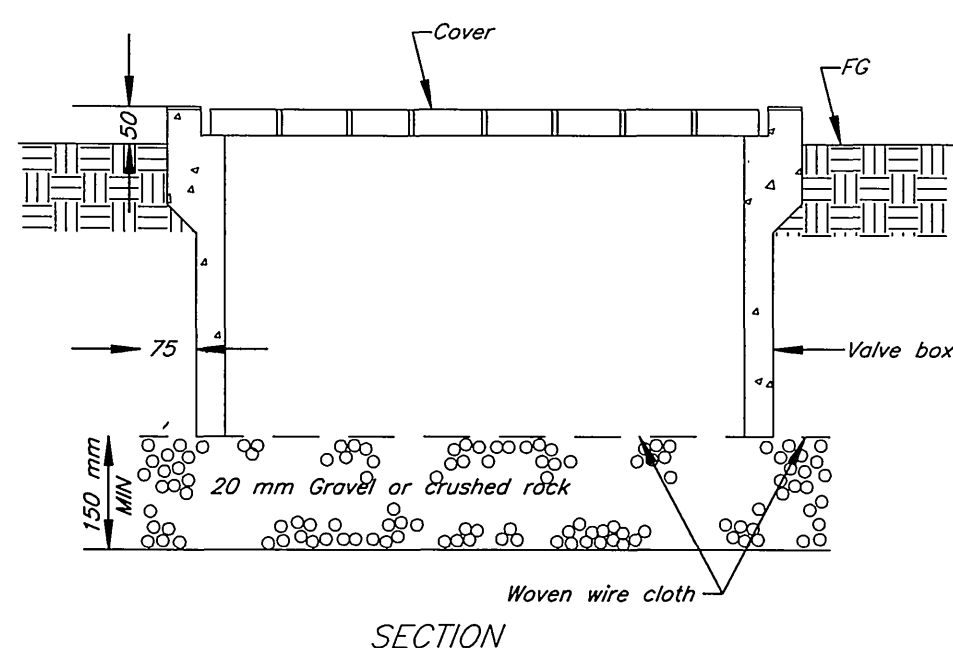
91 FREEWAY EASTBOUND  
 CENTRAL AVENUE  
 OFF-RAMP PLANTING  
 HORIZONTAL SCALE: 1:200

ACCOUNT NUMBER: 432-541500-440302-30364  
 R-3486  
 SHEET 5 OF 6

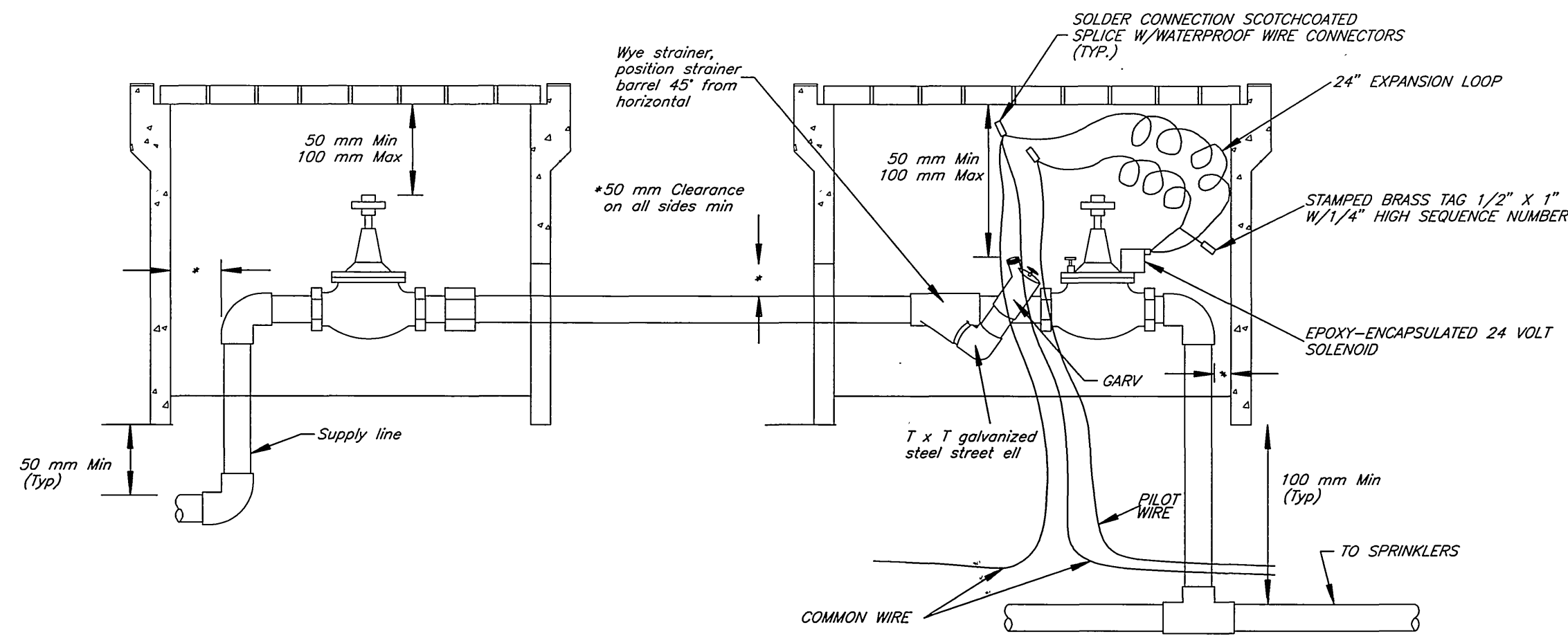
CALTRANS PERMIT NO. 08-97-N-MC-1414

INDEXED 10-21-98 fth





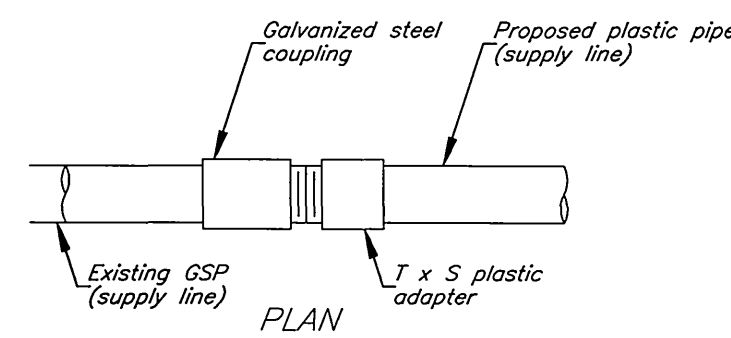
SECTION  
**VALVE BOX**



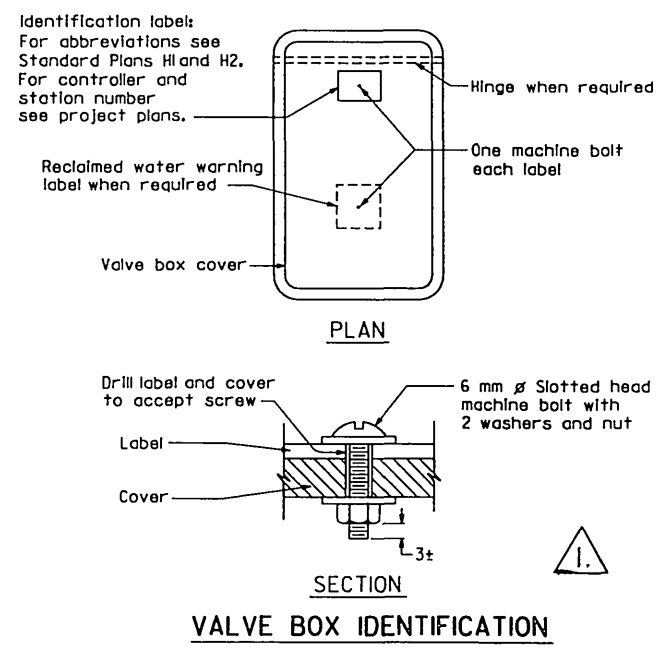
ELEVATION  
**GATE VALVE AND WYE STRAINER WITH REMOTE CONTROL VALVE**

SPRINKLER SCHEDULE															QUANTITIES								
SYMBOL	TYPE	DESCRIPTION	SPRAY PATTERN	OPERATING PRESSURE (APG)	PLUS/MINUS 5%		RADIUS (m)	W X L (m)	MATERIAL	NOZZLE SIZE	INLET CONNECTION (NPT mm)	POSITIVE-LOCKING ADJ. ARC STOP	BACKSPRASH PREVENTER	DIFFUSER PIN	CONTROL FLAP	ADJ. DISCHARGE	RISER		REMARKS	RELOCATED	NEW		
					DISCHARGE l/min	m <sup>3</sup> /hr											MATERIAL	SIZE (IPS mm)				HEIGHT (mm)	
○	C-2	FLOOD BUBBLER		206	0.95	0.06			B		15							V	X			0	34

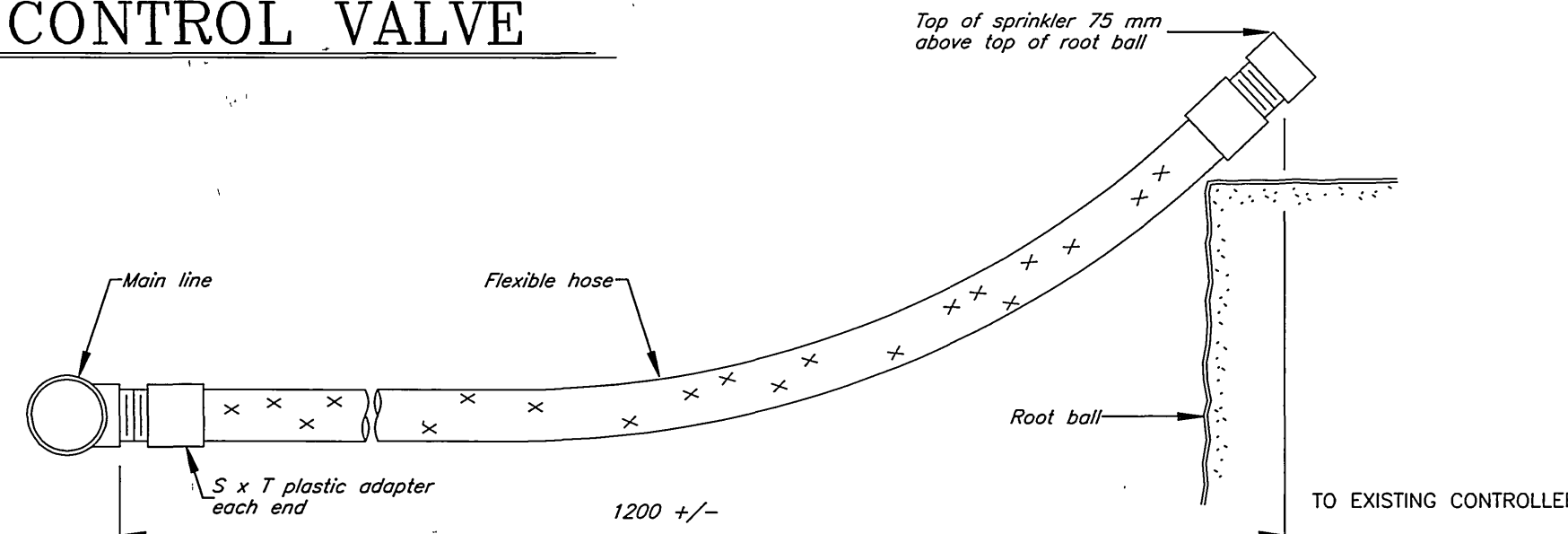
X: DENOTES REQUIREMENT  
 APPLICABLE WHEN CIRCLED:  
 1 - ARC STOP SHALL BE FITTED WITH A NUT AND BOLT.  
 2 - VINYL-COATED CAST IRON HOUSING.  
 3 - SWING JOINT REQUIRED ADJACENT TO SHOULDERS, CURBS, SIDEWALKS AND DIKES.  
 4 - UNLESS OTHERWISE SHOWN ON PLANS.  
 5 - SEE SPECIAL PROVISIONS.  
 6 - INTERNAL CHECK VALVE.



PLAN  
**GALVANIZED AND PLASTIC PIPE CONNECTION**



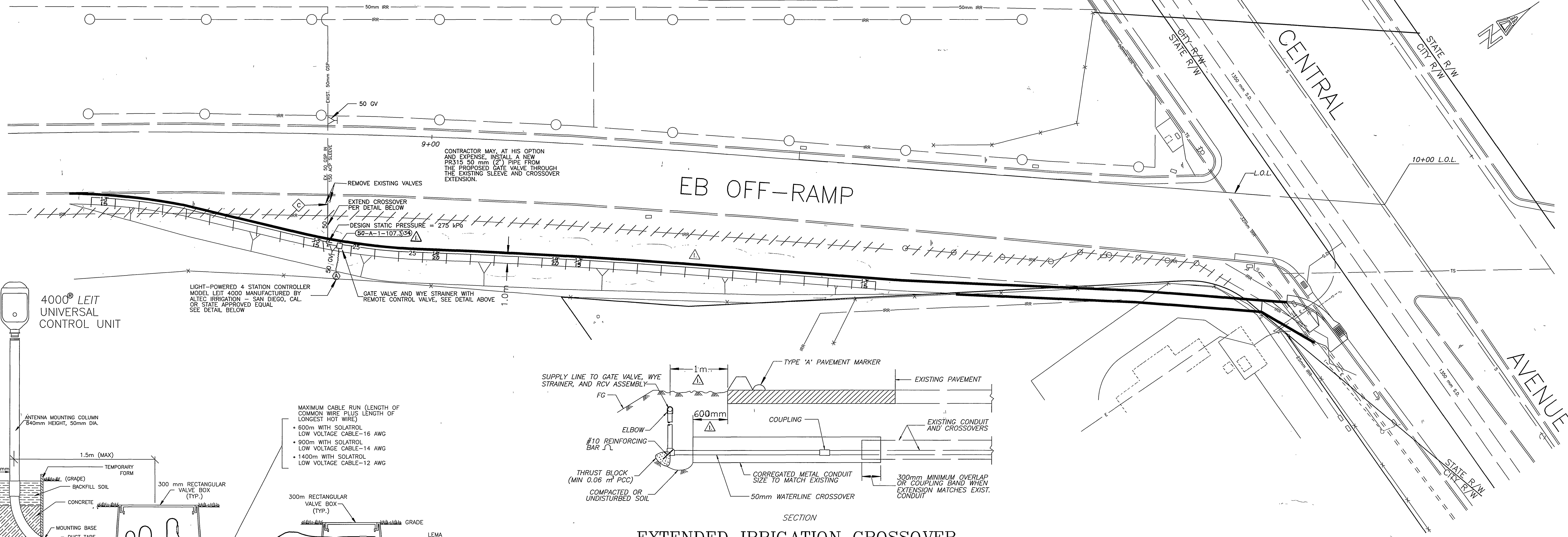
SECTION  
**VALVE BOX IDENTIFICATION**



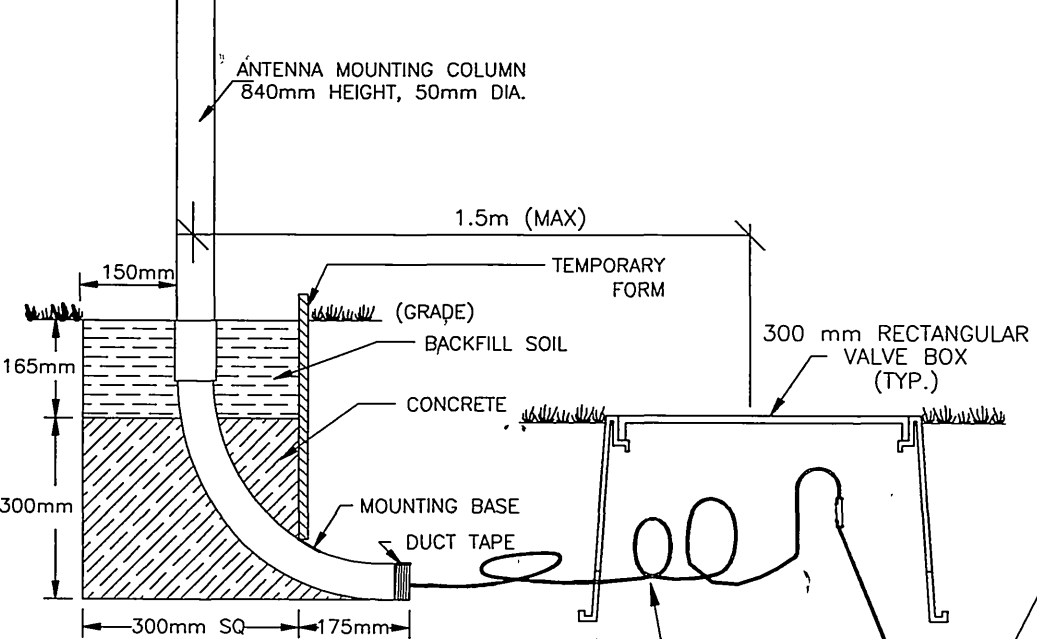
ELEVATION  
**RISER TYPE V**

**GENERAL NOTES:**

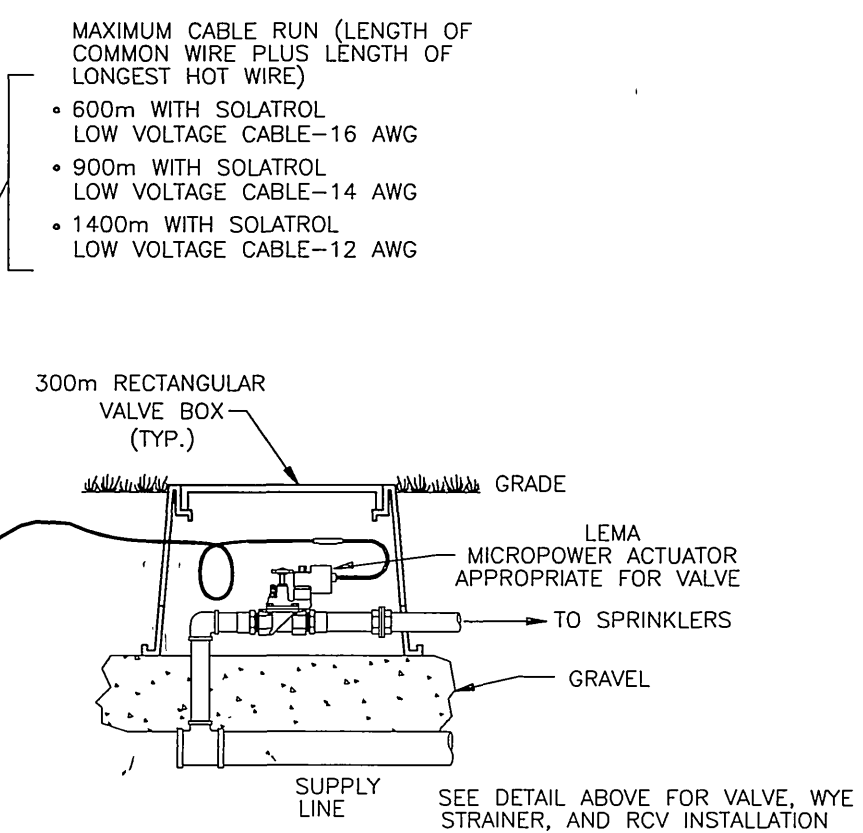
- IRRIGATION SYSTEMS WITHIN THE STATE RIGHT OF WAY SHALL BE INSTALLED IN ACCORDANCE WITH THE PROVISIONS IN SECTION 20-5 'IRRIGATION SYSTEMS' OF THE CURRENT CALTRANS SPECIFICATIONS.
- ALL SPRINKLER HEADS SHALL BE NEW OR REMOVED AND RELOCATED AS SHOWN ON PLAN. CONTRACTOR SHALL REPLACE ANY DAMAGED SPRINKLERS. CONTRACTOR SHALL SALVAGE ALL REMOVED AND UNUSED EQUIPMENT AS DIRECTED BY THE STATE REPRESENTATIVE.
- CONTRACTOR SHALL BE RESPONSIBLE FOR THE TEMPORARY IRRIGATION OF EXISTING PLANTING DURING GRADING OPERATIONS AND RECONSTRUCTION OF THE EXISTING IRRIGATION SYSTEM.
- CONTRACTOR SHALL ACQUIRE AND INSTALL NEW SPRINKLER MATERIALS AS REQUIRED TO COMPLETE SYSTEM MODIFICATIONS.
- CONTRACTOR SHALL REPLACE ALL LANDSCAPING DAMAGED BY TRENCHING WITH SIMILAR MATERIAL.
- REFER TO STANDARD PLANS H5 AND H7 'PLANTING AND IRRIGATION DETAILS' FOR ADDITIONAL DETAILS.



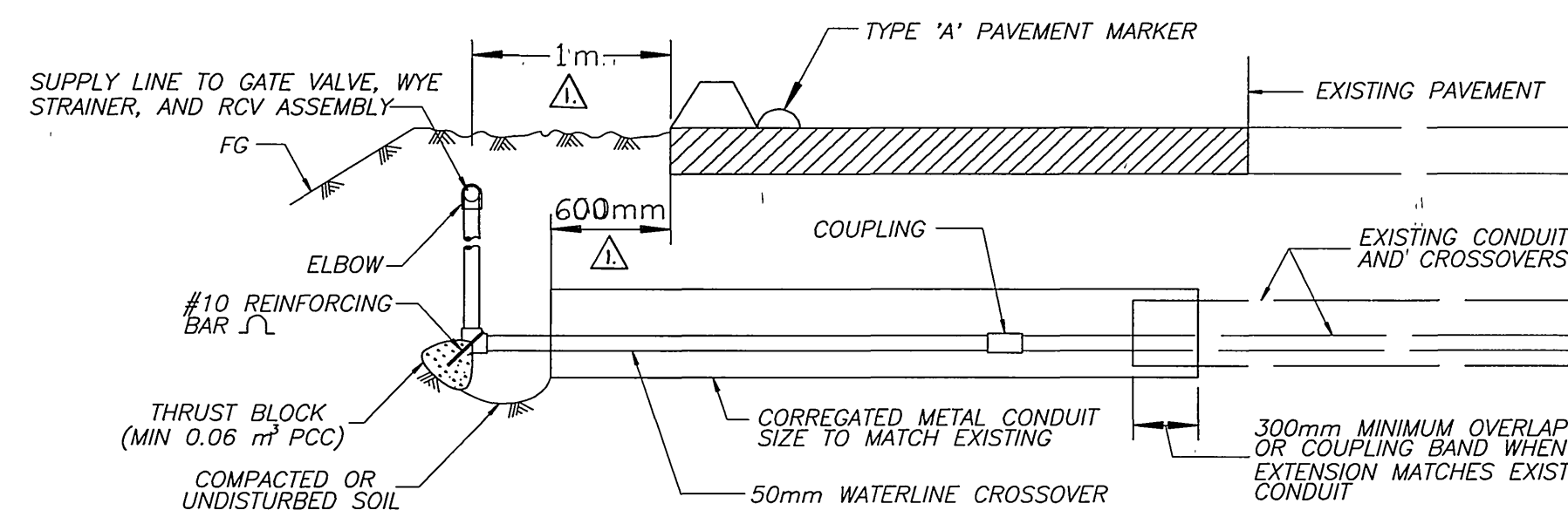
LIGHT-POWERED 4 STATION CONTROLLER MODEL LEIT 4000 MANUFACTURED BY ALTEC IRRIGATION - SAN DIEGO, CAL. OR STATE APPROVED EQUAL SEE DETAIL BELOW



SECTION  
**LEIT 4000 CONTROLLER TYPICAL INSTALLATION**



SECTION  
**300mm RECTANGULAR VALVE BOX**



SECTION  
**EXTENDED IRRIGATION CROSSOVER**

ENGINEER IN RESPONSIBLE CHARGE  
 PHILIP L. HANNAWI  
 R.C.E. No. 44747 Expires 3/31/2002  
 DATE 3/27/98

DESIGNED BY	P.H.	DRAWN BY	P.H.	CHECKED BY	
DATE	3/27/98				

CITY OF RIVERSIDE, CALIFORNIA  
 PUBLIC WORKS DEPARTMENT

APPROVED BY	DATE	APPROVED BY	DATE
PRINCIPAL ENGINEER	3/27/98	R.M. Pratt	3/27/98
STREET DIVISION		PUBLIC WORKS DIRECTOR	
TRAFFIC DIVISION			
SURVEYOR			

DATE 3-1-98

81 FREEWAY EASTBOUND  
 CENTRAL AVENUE  
 OFF-RAMP IRRIGATION

ACCOUNT NUMBER  
 432-541500-440302-30364  
**R-3486**  
 SHEET 6 OF 6  
 FILE NO. :

CALTRANS PERMIT NO. 08-97-N-MC-1414

HORIZONTAL SCALE: 1:200

INDEXED 10-21-90 64