

RIVERSIDE CITY OF RIVERSIDE CALIFORNIA

PUBLIC WORKS DEPARTMENT

WHEELCHAIR RAMP CONSTRUCTION 1998 - 1999 (PHASE 1)

GENERAL CONSTRUCTION NOTES

- EXISTING UTILITIES SHOWN ON THIS PLAN ARE PLOTTED FROM UTILITY RECORDS. THE CONTRACTOR IS REQUIRED TO TAKE DUE PRECAUTIONARY MEASURES TO LOCATE AND PROTECT ALL UTILITIES WHETHER OR NOT SHOWN ON THIS PLAN.
- PRIME CONTRACTORS, BIDDING THIS WORK, SHALL HAVE A CLASS A, C-8 OR C-12 LICENSE.
- CONFLICTING UTILITIES, SHOWN WITHIN CONSTRUCTION AREA, WILL BE RELOCATED PRIOR TO CONSTRUCTION.
- RIGHTS OF ENTRY HAVE BEEN OBTAINED FOR WORK SHOWN OUTSIDE OF CITY RIGHT OF WAY.
- CONSTRUCTION SHALL BE IN ACCORDANCE WITH THE CITY OF RIVERSIDE STD. DWGS. AND STANDARD SPECIFICATIONS FOR PUBLIC WORKS CONSTRUCTION, 1997 EDITION.

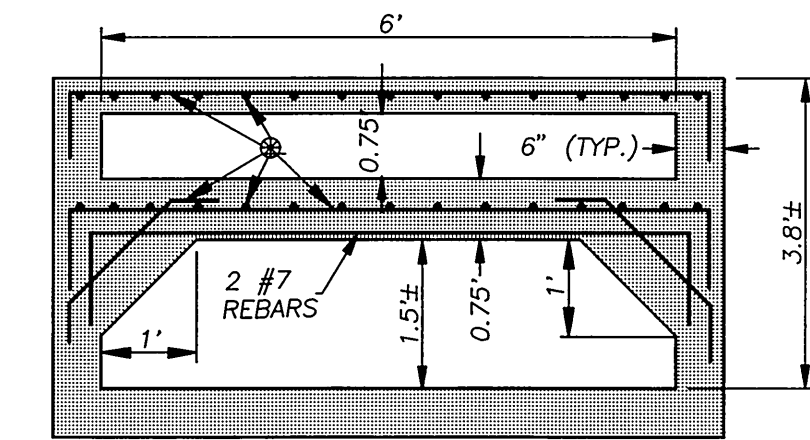
SPECIFIC CONSTRUCTION NOTES

- NUMBERS ABOVE 100 IN A HEXAGON ON THE PLAN REFER TO THE RESPECTIVE STANDARD DRAWING AND SHALL BE CONSTRUCTED ACCORDINGLY UNLESS MODIFICATIONS ARE NOTED ON THE PLAN OR COVER SHEET. ANY NUMBER SHOWN BELOW THE STANDARD DRAWING NUMBER INDICATES THE SPECIFIC ALTERNATE TO BE CONSTRUCTED.
- ABB C** CALTRANS STD. DWG. A88-CASE C WHEELCHAIR RAMP MODIFIED AS SHOWN ON THE PLANS.
 - ADJ ETC** ADJUST STREET LIGHT PULL BOX.
 - ADJ SIG** ADJUSTING TRAFFIC SIGNAL PULL BOX.
 - MOD SGL** MODIFY TRAFFIC SIGNAL AND LIGHTING SYSTEM.
 - OL VAR** CONSTRUCT VARIABLE THICKNESS AC OVERLAY (0.02' MIN. THICKNESS).
 - TBL** TELEPHONE MANHOLE COVER TO BE ADJUSTED TO GRADE BY TELEPHONE COMPANY.
 - W** WATER METER TO BE ADJUSTED BY PUBLIC UTILITY DEPARTMENT, WATER DIVISION. THE CONTRACTOR SHALL ADJUST THE WATER METER VAULT TO THE FINISHED GRADE.

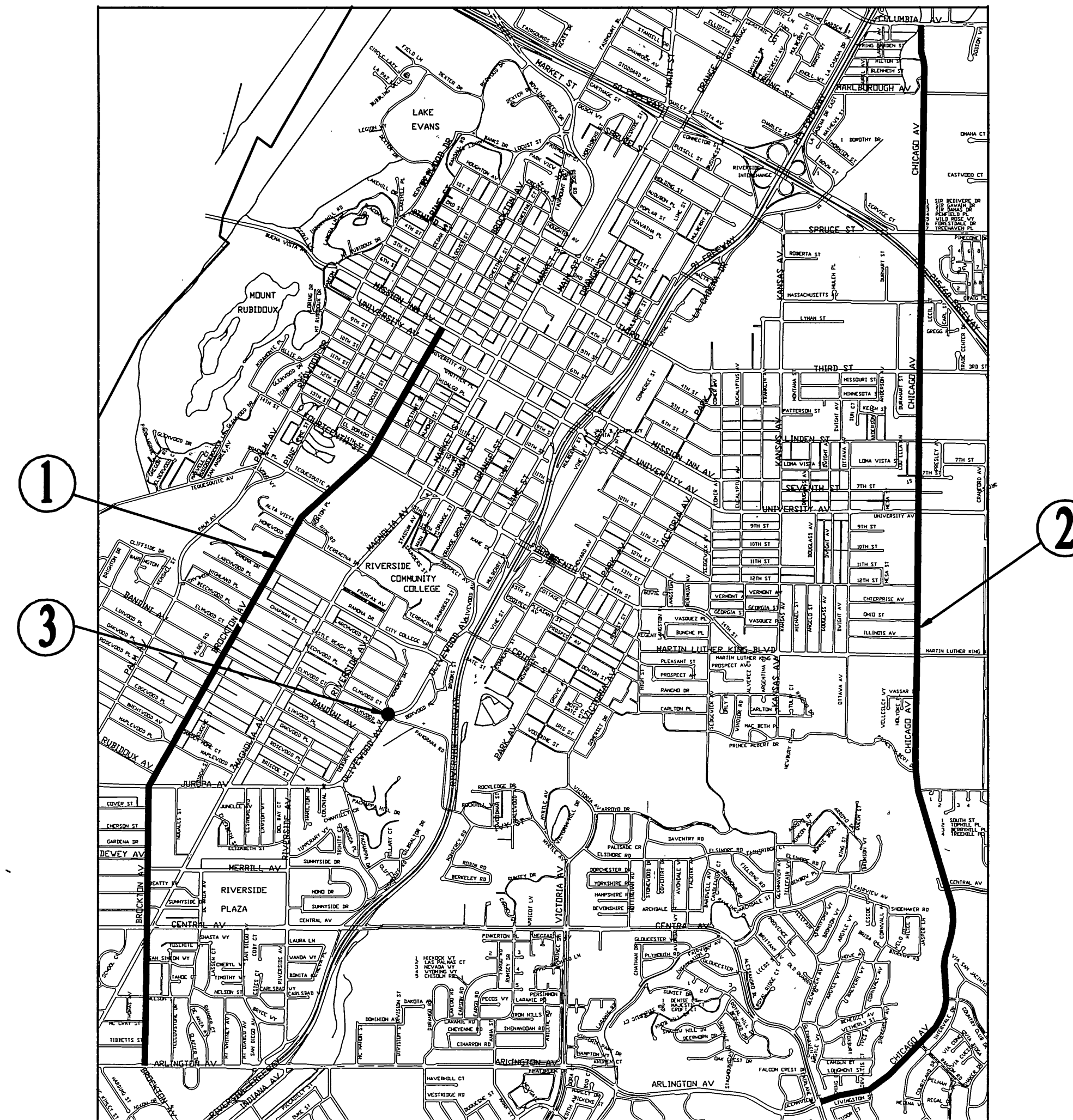
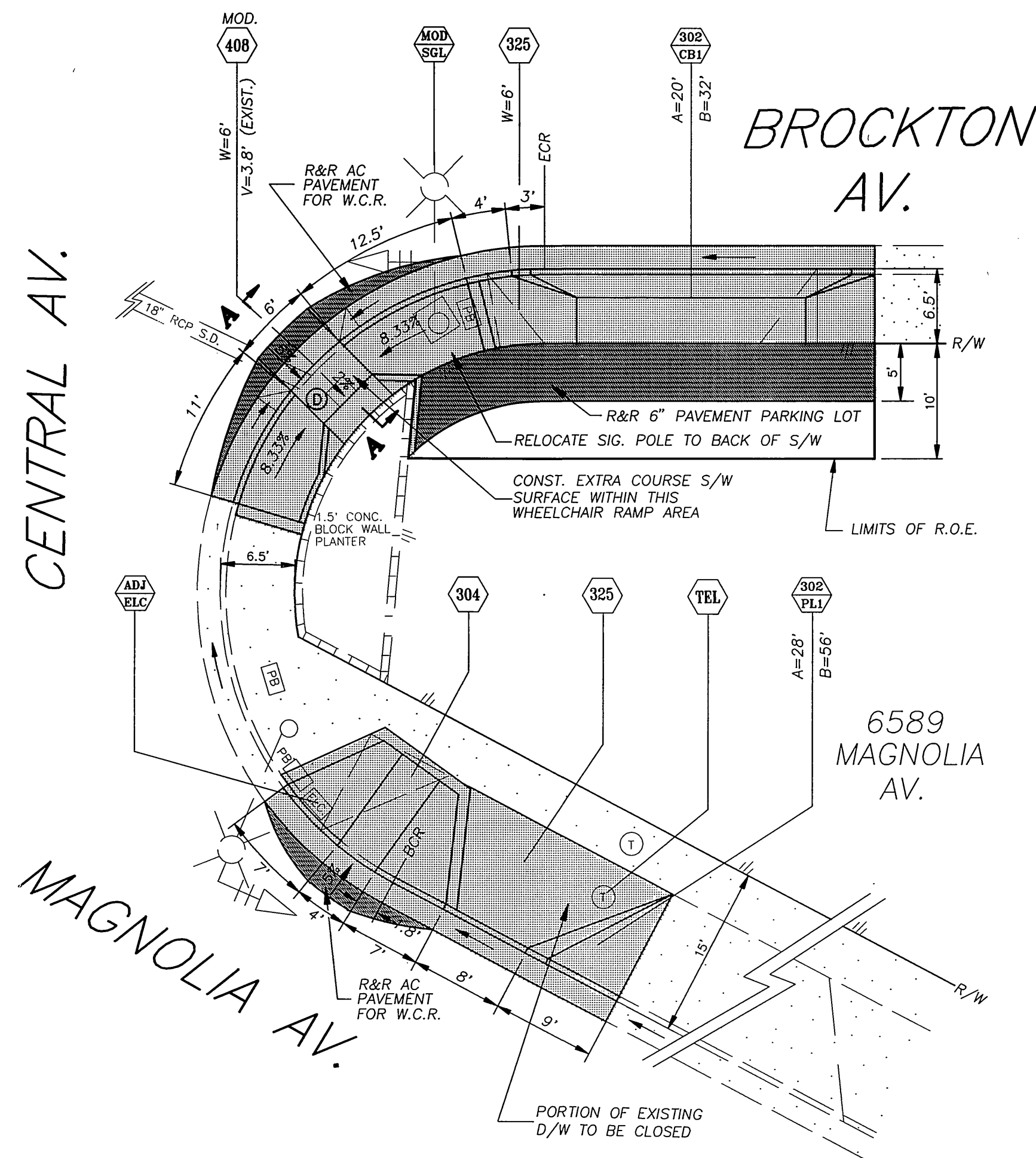
STREET

LIMITS

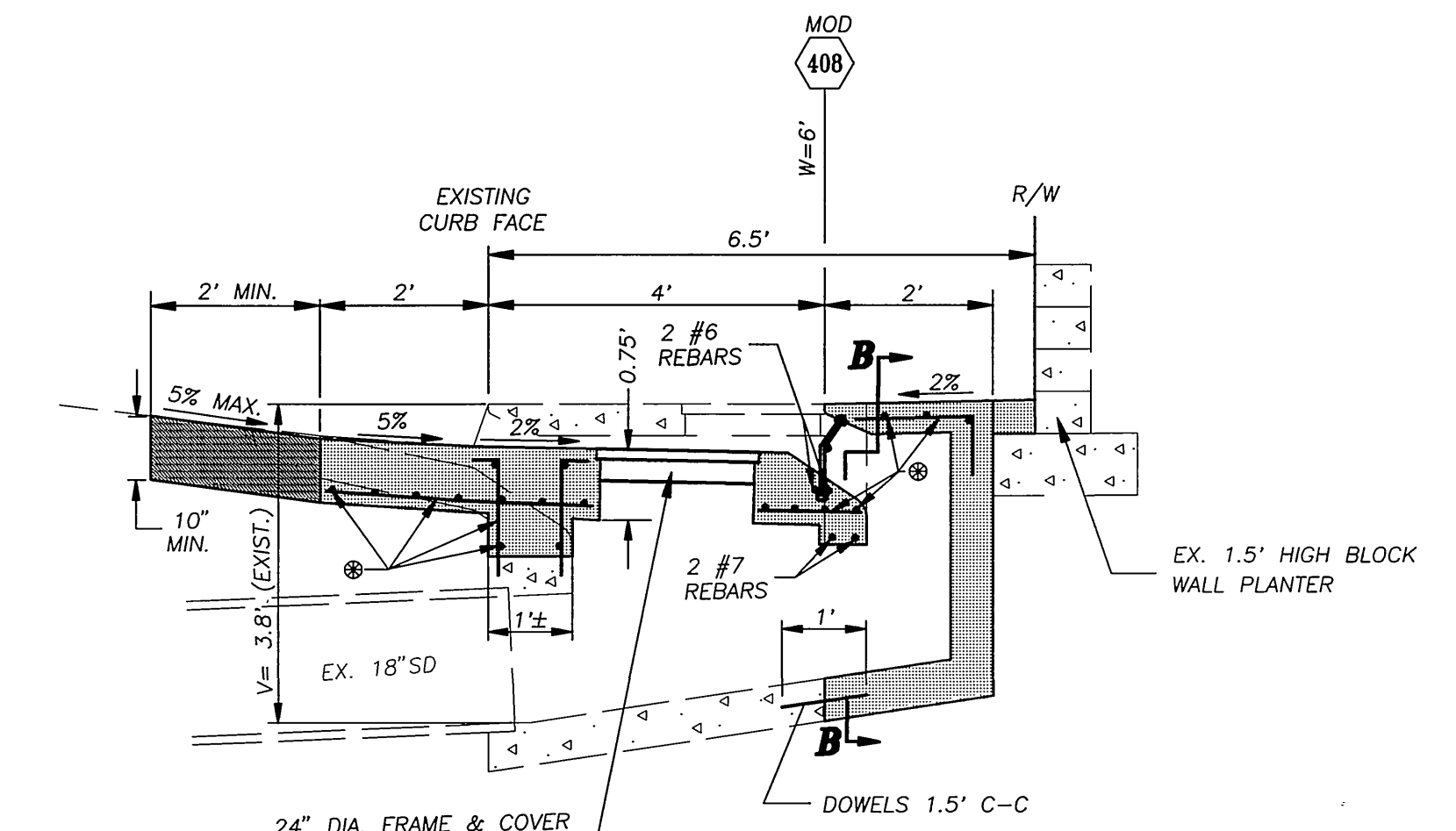
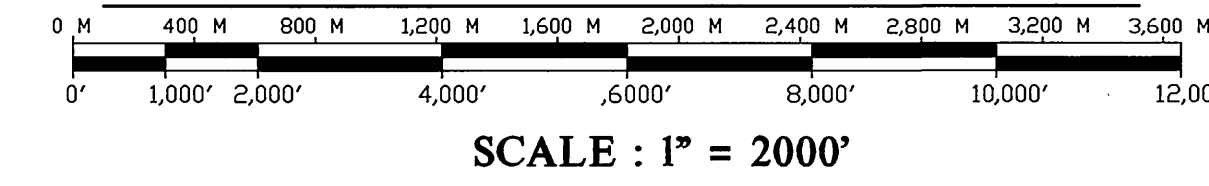
- BROCKTON AVE. ARLINGTON AVE. TO MISSION INN AVE.
- CHICAGO AVE. ARLINGTON AVE. TO COLUMBIA AVE.
- OLIVEWOOD AVE. AT ELMWOOD CT. AND RAMONA RD.



SECTION B-B
(N.T.S.)



PROJECT LOCATION PLAN



SECTION A-A
(N.T.S.)

- NOTE:
- TYPICAL REBAR CLEARANCE IS 2".
 - SEE STD. DWG. #402 FOR INLET DETAIL.
 - THE REINFORCING STEEL AROUND MANHOLE FRAME SHALL BE #4 REBARS.
 - SEE STD. DWG. #408 FOR DETAILS.

WHEELCHAIR RAMP DETAILS @ MAGNOLIA BROCKTON AND CENTRAL AVENUES

(SCALE 1" = 10')
NOTE: CROSSWALKS WILL BE REMOVED & MODIFIED BY OTHERS.

IMPORTANT NOTICE
Section 4216/4217 of the Government Code requires a Dig Alert Identification Number to be issued before a "Hazard to Caltrans" will be sold. For your Dig Alert I.D. Number call CALL TOLL FREE 48 HOURS BEFORE YOU DIG UNDERGROUND SERVICE ALERT 1-800-227-2600

ENGINEER IN RESPONSIBLE CHARGE
Lauren F. Caldwell
LAUREN F. CALDWELL
R.C.E. No. 39441 expires 12/31/2001
DATE 8/27/98



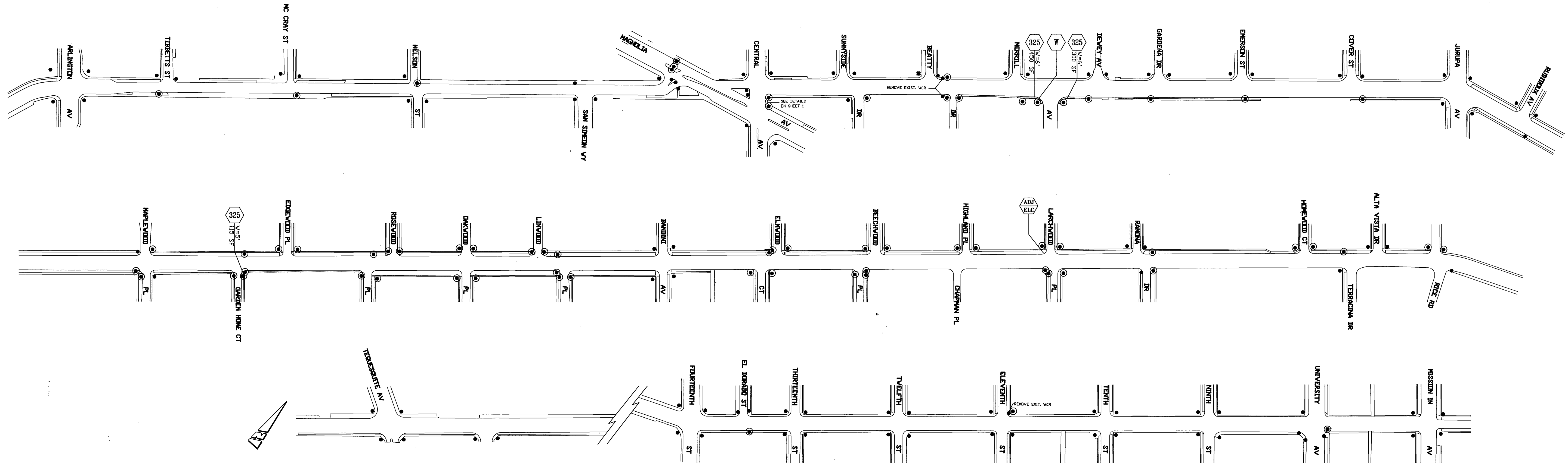
MARK	REVISIONS	APPR	DATE

CITY OF RIVERSIDE, CALIFORNIA PUBLIC WORKS DEPARTMENT			
APPROVED BY	BY	DATE	APPROVED BY

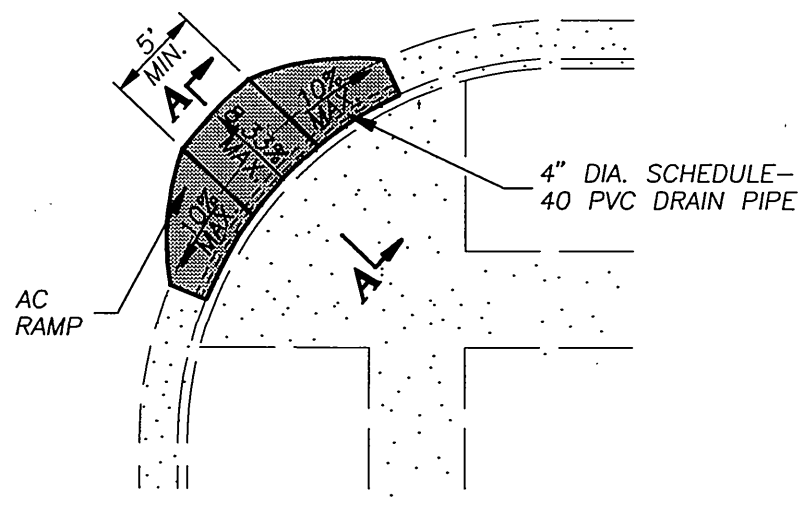
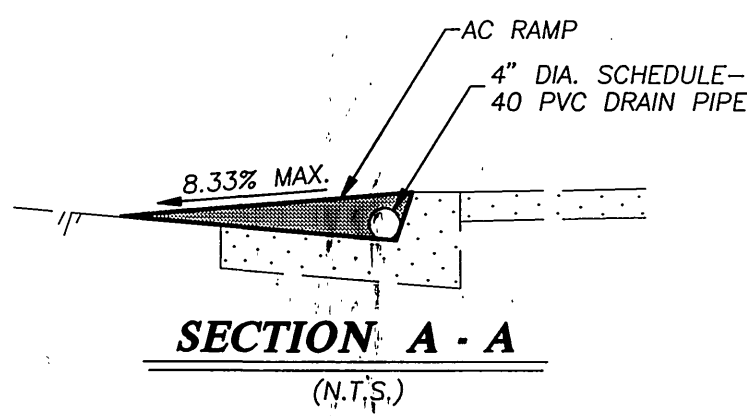
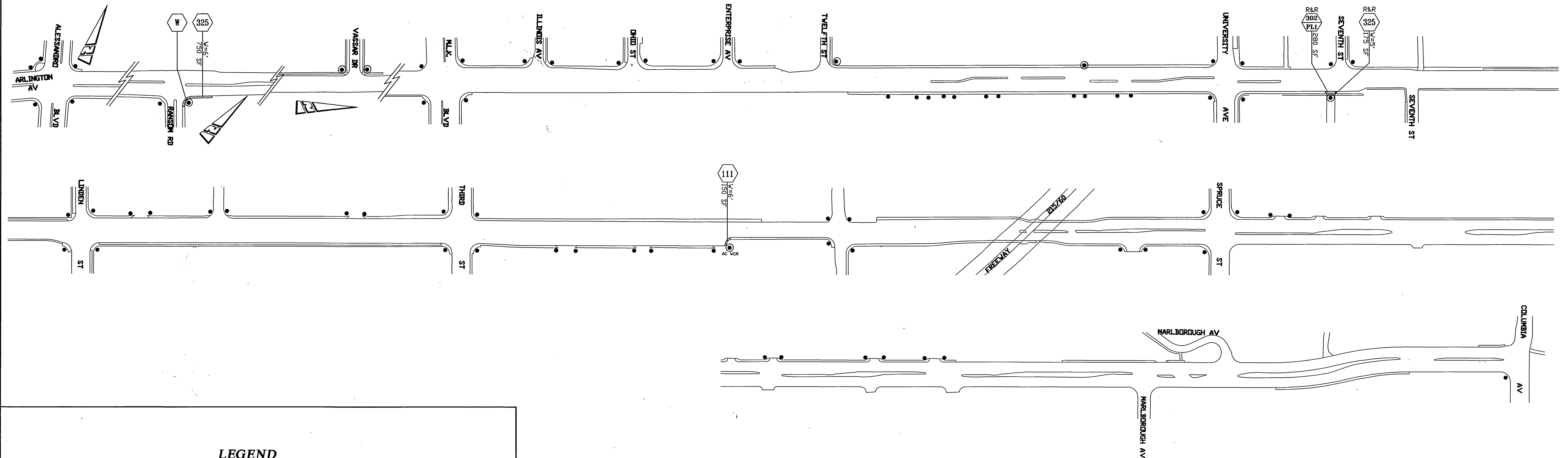
WHEELCHAIR RAMP CONSTRUCTION
1998 - 1999 (PHASE 1)

ACCT. NO. 230-541500-440223-30098 E2-002
R-3494
SHEET 1 OF 3
FILE NO. U./MDICK/R3494-01

BROCKTON AVE.



CHICAGO AVE.



DETAILS OF AC RAMP
(N.T.S.)

- AT THE FOLLOWING 5 LOCATIONS:
1. NE UNIVERSITY & BROCKTON.
 2. NW NELSON & BROCKTON.
 3. 6647 MAGNOLIA AVE.
 4. ELMWOOD CT. & RAMONA DR.
 5. OLIVEWOOD AVE. & RAMONA DR.

LEGEND

- PROPOSED WHEELCHAIR RAMP
- PROPOSED AC RAMP
- EXISTING WHEELCHAIR RAMP (NO WORK REQUIRED)
- WCR WHEELCHAIR RAMP

ENGINEER IN RESPONSIBLE CHARGE
Lauren F. Caldwell

LAUREN F. CALDWELL
R.C.E. No. 39441 expires 12/31/2001
DATE 8/22/98



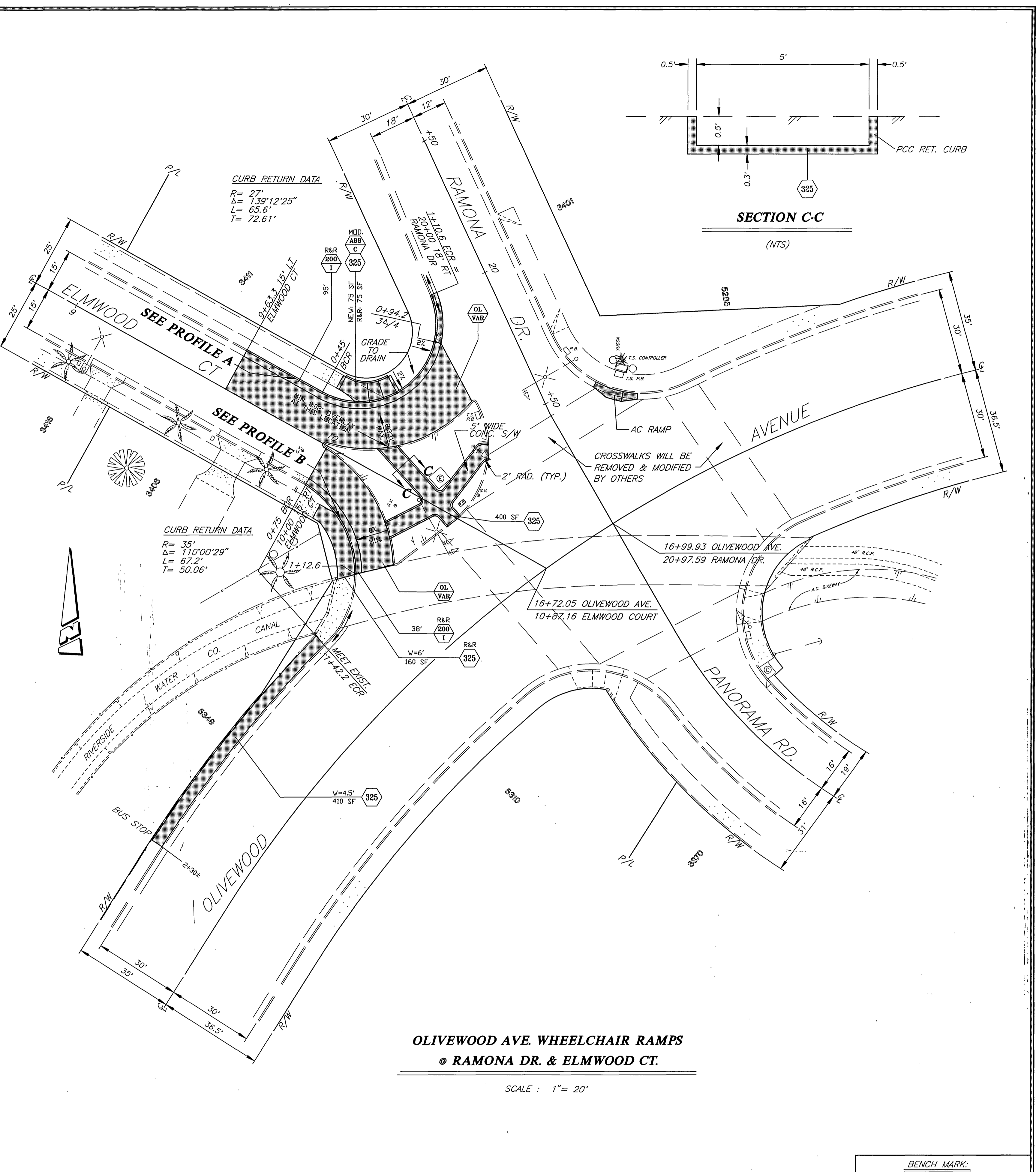
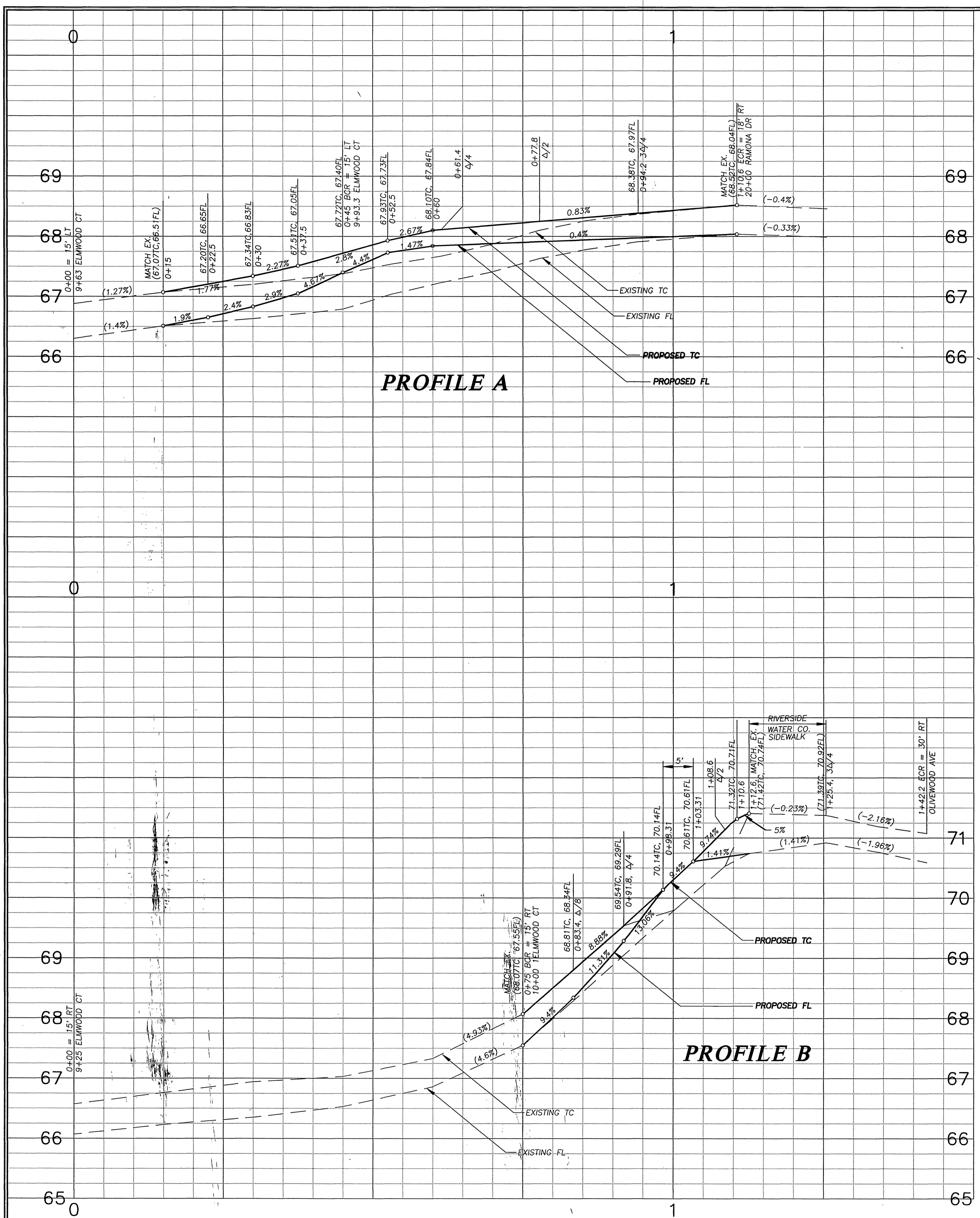
DESIGNED BY	FL	DRAWN BY	RAM	CHECKED BY	AE
DATE	10/1/98	DATE		DATE	

CITY OF RIVERSIDE, CALIFORNIA PUBLIC WORKS DEPARTMENT			
APPROVED BY	BY	DATE	APPROVED BY
ENGINEERING MANAGER	<i>R. M. M...</i>	9/3/98	PUBLIC WORKS DIRECTOR
PRINCIPAL ENGINEER			
STREET SERVICE			
TRAFFIC DIVISION			
SURVEYOR			

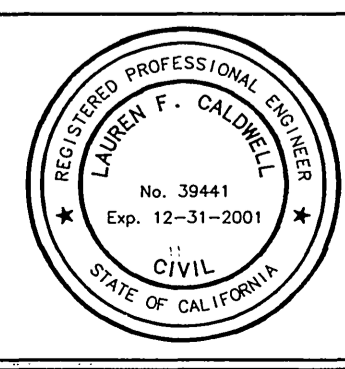
**WHEELCHAIR RAMP
CONSTRUCTION**
1998 - 1999 (PHASE 1)

HORIZONTAL SCALE: 1" = 200'

ACCT. NO.: 230-541500-440223-30098
E2-002
R-3494
SHEET 2 OF 3
FILE NO.: U/MDICK/R3494-02



ENGINEER IN RESPONSIBLE CHARGE
Lauren F. Caldwell
LAUREN F. CALDWELL
R.C.E. No. 39441 expires 12/31/2001
DATE 9/22/98



MARK	REVISIONS	APPR.	DATE

DESIGNED BY: FYL DRAWN BY: DJM CHECKED BY: SC

CITY OF RIVERSIDE, CALIFORNIA
PUBLIC WORKS DEPARTMENT

APPROVED BY: [Signature] DATE: 9-3-98
 APPROVED BY: [Signature] DATE: 9-3-98

ENGINEERING MANAGER: R. McBrat
 PRINCIPAL ENGINEER: [Signature]
 STREET SERVICE: [Signature]
 TRAFFIC DIVISION: [Signature]
 SURVEYOR: [Signature]

WHEELCHAIR RAMP CONSTRUCTION
1998 - 1999 (PHASE 1)

HORIZ. SCALE: 1" = 20' VERT. SCALE 1" = 1'

ACCT. NO. 220-511200-440120-12078

R-3494

SHEET 3 OF 3

FILE NO. J:/MDICK/R3494-03

BENCH MARK:
TOP OF CURB ON CATCH BASIN C.L.
STA. 1+17.3 = ELEV. 870.19
PER LL: 01 59-60

INDEXED 3-25-95 LH