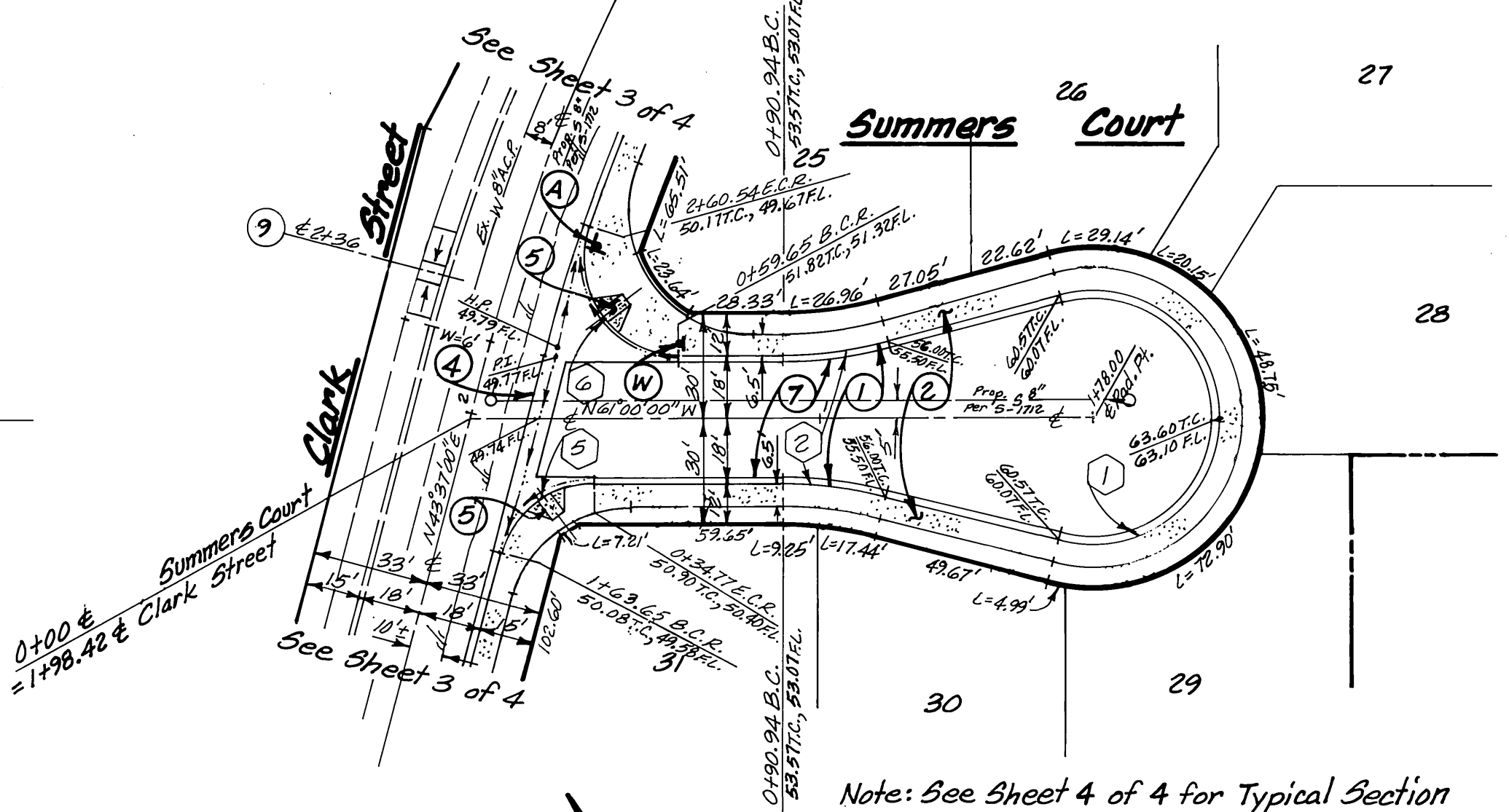
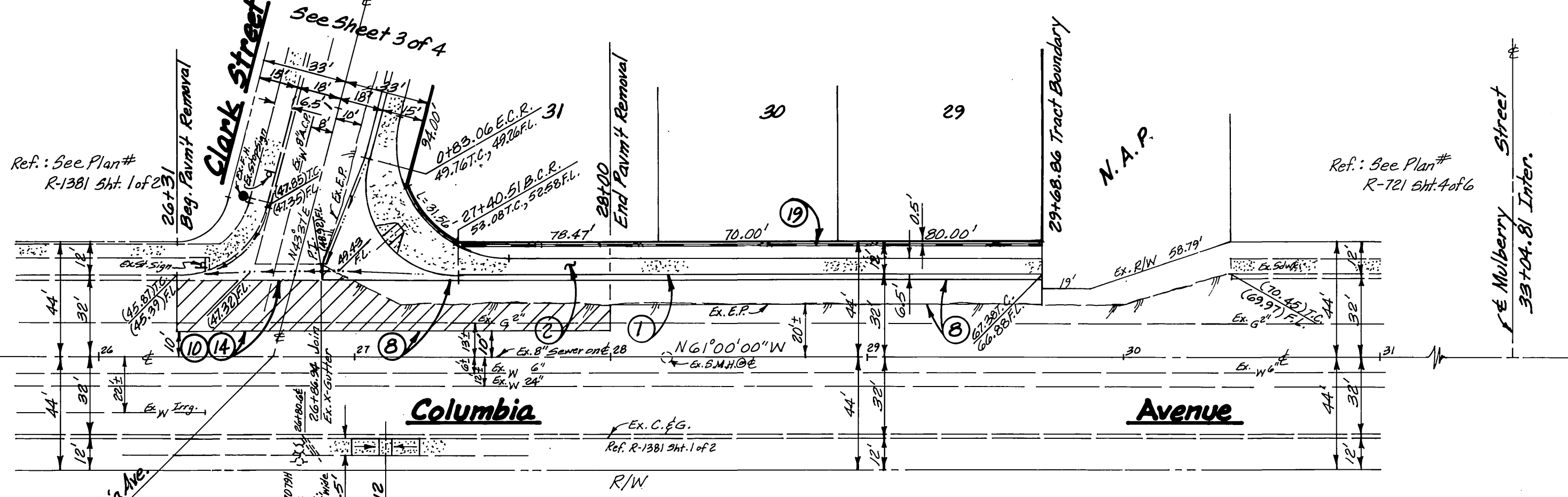


Profile Scales
 Horiz.: 1" = 40'
 Vert.: 1" = 4'



CURB CURVE DATA

1	R = 36.00' Δ = 210°00'00" L = 131.95'	12	R = 818.00' Δ = 75°13'39" L = 56.20'
2	R = 115.00' Δ = 15°00'00" L = 30.11' T = 15.14'	13	R = 818.00' Δ = 107°18'04" L = 147.07'
3	R = 27.00' Δ = 114°52'13" L = 54.13' T = 42.28'	14	R = 518.00' Δ = 2°41'00" L = 24.26'
4	R = 115.00' Δ = 2°44'51" L = 5.51' T = 2.76'		
5	R = 27.00' Δ = 75°23'00" L = 35.52' T = 20.86'		
6	R = 27.00' Δ = 109°03'03" L = 51.39' T = 37.89'		
7	R = 27.00' Δ = 70°33'36" L = 33.41' T = 19.22'		
8	R = 27.00' Δ = 90°21'40" L = 42.58' T = 27.17'		
9	R = 27.00' Δ = 89°38'20" L = 42.24' T = 26.83'		
10	R = 35.00' Δ = 104°37'00" L = 63.91' T = 45.30'		
11	R = 482.00' Δ = 7°34'57" L = 66.59' T = 33.35'		

- CONSTRUCTION NOTES**
- Construction (Type I) 6" CF curb and gutter per City Std. Drwg. No. 200
 - Const. curb sidewalk per City Std. Drwg. No. 325
 - Const. driveway approach (type curb-I) per City Std. Drwg. No. 302 and 303 (A=16", B=23")
 - Const. cross gutter per City Std. Drwg. No. 220, W= as shown
 - Const. (Type I) wheelchair ramp per City Std. Drwg. No. 304
 - Const. (Type I) asphalt concrete term per City Std. Drwg. No. 250
 - Const. 2 1/2" asphalt concrete pavement over 4" crushed agg. Base Per S.R. 1537 R = 65
 - Const. 3" asphalt concrete pavement over 7" crushed agg. Base Per S.R. 1237 R = 53
 - Const. (type II) wheelchair ramp per City Std. Drwg. No. 304
 - Saw cut existing pavement to a straight neat line
 - Const. barricade per City Std. Drwg. No. 180
 - Const. curb outlet structure per City Std. Drwg. No. 410 (W, L and S as shown)
 - Const. under sidewalk drain per City Std. Drwg. No. 411
 - Remove existing pavement
 - Const. catch basin per City Std. Drwg. No. 405 W = 5.00', V = 3.94'
 - Install 18" R.C.P. (1000-D) @ S = 0.0050, remove plug and connect to Ex. 18" R.C.P.
 - Install type F-1 flexible delineators
 - Plant street trees per City Standard Details 1001 and 1002. Call the Tree Inspector at 361-6126 for field spotting of trees prior to digging plant pits to verify final quantities, species and locations.
 - Reverse frontage block wall per City Standard No. 704 (Split Face, One Side, Facing Columbia Ave., Fawn Color by Angelus Block)



City of Riverside Business Tax Certificate # 7E184 Exp. Date 4/21/00

LINVILLE CIVIL ENGINEERS
 LAND SURVEYORS INC.
 Cucamonga Business Park
 9587 Arrow Route Suite H
 RANCHO CUCAMONGA, CA 91730
 (909) 989-3922
 File No. TR51098-1

MARK	REVISIONS	APPR. DATE
	DESIGNED BY K.M.L. DRAWN BY G.A.C. CHECKED BY J.L.C.	

CITY OF RIVERSIDE PUBLIC WORKS DEPARTMENT	
APPROVED BY	DATE
PRINCIPAL ENGINEER	4/17/00
PARK DEPARTMENT	4/17/00
TRAFFIC DIVISION	4/17/00
P.W. ENGINEER MANAGER	4/17/00
STREET SERVICES	4/17/00

Street Plan and Profile		ACCOUNT NO.
Tract 29219		R-3500
Columbia Avenue		SHEET 2 OF 4
Summers Court		
HORIZ. SCALE: 1" = 40'	VERT. SCALE: 1" = 4'	

Planning Department
 No Environmental Review Required
 Signature: [Signature]
 Date: 4/17/00



Bench Mark: JT-F2
 P.K. Nail in curb return at the S.W. Corner of Columbia Ave. and Orange St. Per City F.B. 717/48
 E.I. 827.25

City of Riverside Water System
 Approved By: [Signature]
 Date: 4/17/00

850Left

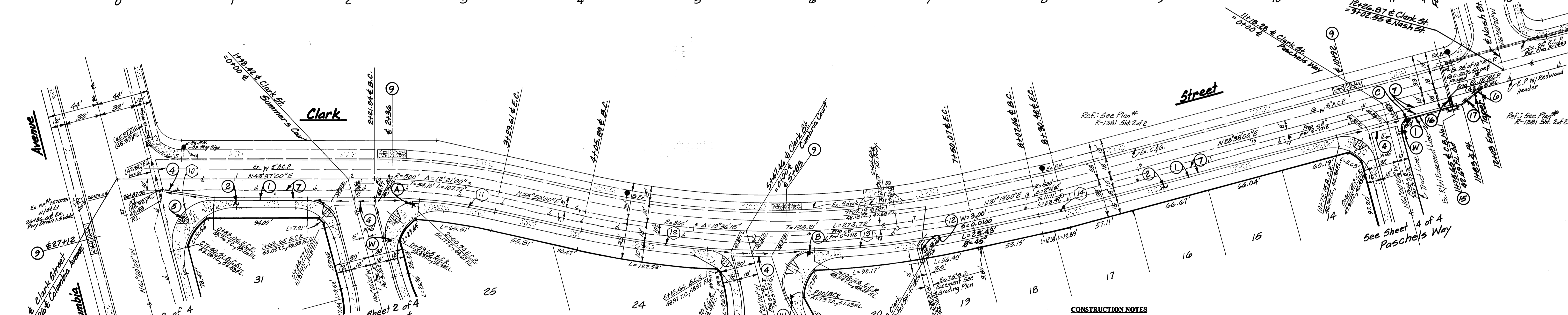
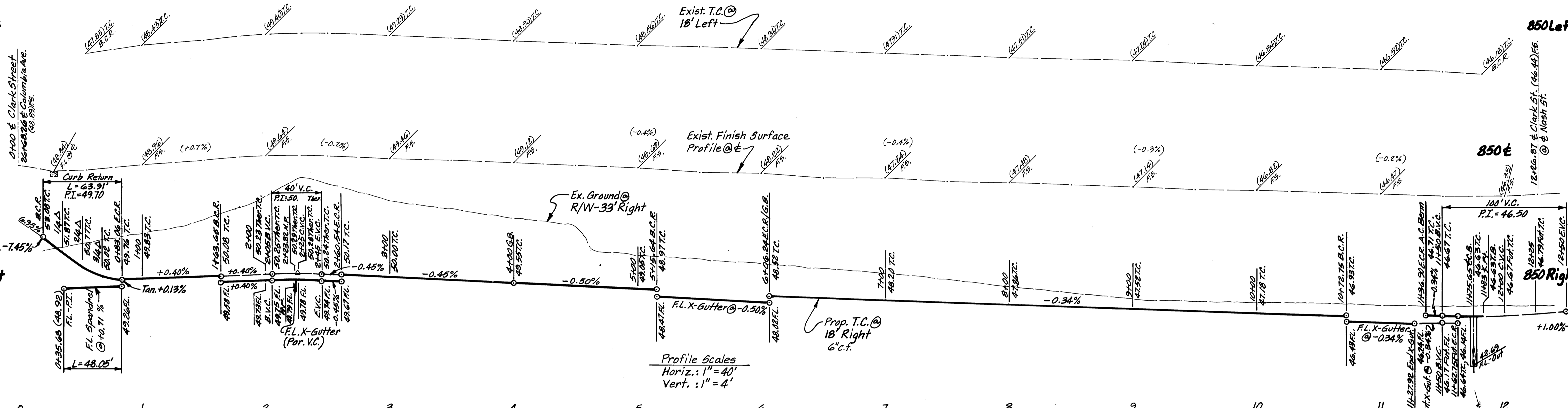
850Left

850 €

850 €

850Right

850Right



CURVE DATA

1	R = 36.00' Δ = 210°00'00" L = 131.95'	7	R = 27.00' Δ = 70°33'36" L = 33.41' T = 19.22'	12	R = 818.00' Δ = 7°51'37" L = 112.22' T = 36.20'
2	R = 115.00' Δ = 15°00'00" L = 30.11' T = 15.14'	8	R = 27.00' Δ = 90°21'40" L = 42.58' T = 27.17'	13	R = 818.00' Δ = 10°18'04" L = 147.07' T = 73.73'
3	R = 27.00' Δ = 114°32'13" L = 54.13' T = 42.28'	9	R = 27.00' Δ = 89°38'20" L = 42.24' T = 26.83'	14	R = 518.00' Δ = 2°41'00" L = 24.26' T = 12.13'
4	R = 115.00' Δ = 2°44'51" L = 5.51' T = 2.76'	10	R = 35.00' Δ = 104°37'00" L = 63.91' T = 45.30'		
5	R = 27.00' Δ = 75°23'00" L = 35.52' T = 20.86'	11	R = 482.00' Δ = 7°54'57" L = 66.59' T = 33.35'		
6	R = 27.00' Δ = 109°03'03" L = 51.39' T = 37.89'				

CONSTRUCTION NOTES

- Construction (Type I) 6"CF curb and gutter per City Std. Drwg. No. 200
- Const. curb sidewalk per City Std. Drwg. No. 325
- Const. driveway approach (type curb-I) per City Std. Drwg. No. 302 and 303 (A=16", B=23")
- Const. cross gutter per City Std. Drwg. No. 220, W = as shown
- Const. (Type I) wheelchair ramp per City Std. Drwg. No. 304
- Const. (Type I) asphalt concrete berm per City Std. Drwg. No. 250
- Const. 2 1/2" asphalt concrete pavement over 4" crushed agg. Base Per S.R. 1537 R = 65
- Const. 3" asphalt concrete pavement over 7" crushed agg. Base Per S.R. 1537 R = 59
- Const. (type II) wheelchair ramp per City Std. Drwg. No. 304
- Saw cut existing pavement to a straight neat line
- Const. barricade per City Std. Drwg. No. 180
- Const. curb outlet structure per City Std. Drwg. No. 410 (W, L and S as shown)
- Const. under sidewalk drain per City Std. Drwg. No. 411
- Remove existing pavement
- Const. catch basin per City Std. Drwg. No. 405 W = 5.00', V = 3.94'
- Install 16" R.C.P. (1000-D) @ S = 0.0050, remove plug and connect to Ex. 18" R.C.P.
- Install type F-1 flexible delineators
- Plant street trees per City Standard Details 1001 and 1002. Call the Tree Inspector at 351-6126 for field spotting of trees prior to digging plant pits to verify final quantities, species and locations. Reverse frontage black wall per City Standard No. 104 (Split Face One Side Facing Columbia Ave., Fawn Color by Anselmo Black)

Planning Department
No Environmental Review Required
Signature: [Signature]
Date: 1/11/00

Underground Service Alert
Call: TOLL FREE
1-800-227-2600

Bench Mark: J7-F2
P.K. Nail in curb return at the S.W. Corner of Columbia Ave. and Orange St. Per City F.B.777/AB
E.I. 827.25

City of Riverside
Water System
Approved By: [Signature]
Date: 12/3/99

City of Riverside Business Tax Certificate # 75184 Exp. Date 4/2/00

LINVILLE CIVIL ENGINEERS
LAND SURVEYORS INC.
Cucamonga Business Park
9587 Arrow Route, Suite H
RANCHO CUCAMONGA, CA 91730
(909) 989-3922
File No. TR 51028-1

REGISTERED PROFESSIONAL ENGINEER
KENNETH N. LINVILLE
No. 20309
Exp. Date 9/29/01
CIVIL
STATE OF CALIFORNIA

DESIGNED BY: K.N.L. DRAWN BY: G.A.C. CHECKED BY: J.L.C.
DATE: 1/14/00

CITY OF RIVERSIDE
PUBLIC WORKS DEPARTMENT

APPROVED BY: [Signature]
DATE: 1/13/00

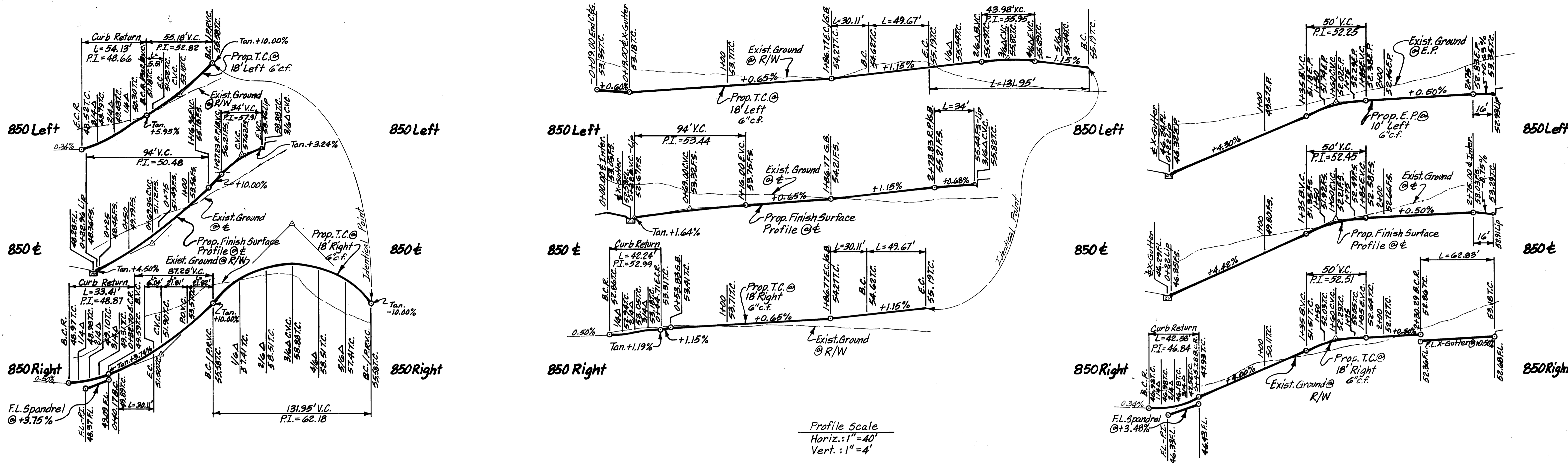
APPROVED BY: R. McBrath
PUBLIC WORKS DIRECTOR

DATE: 2-17-00

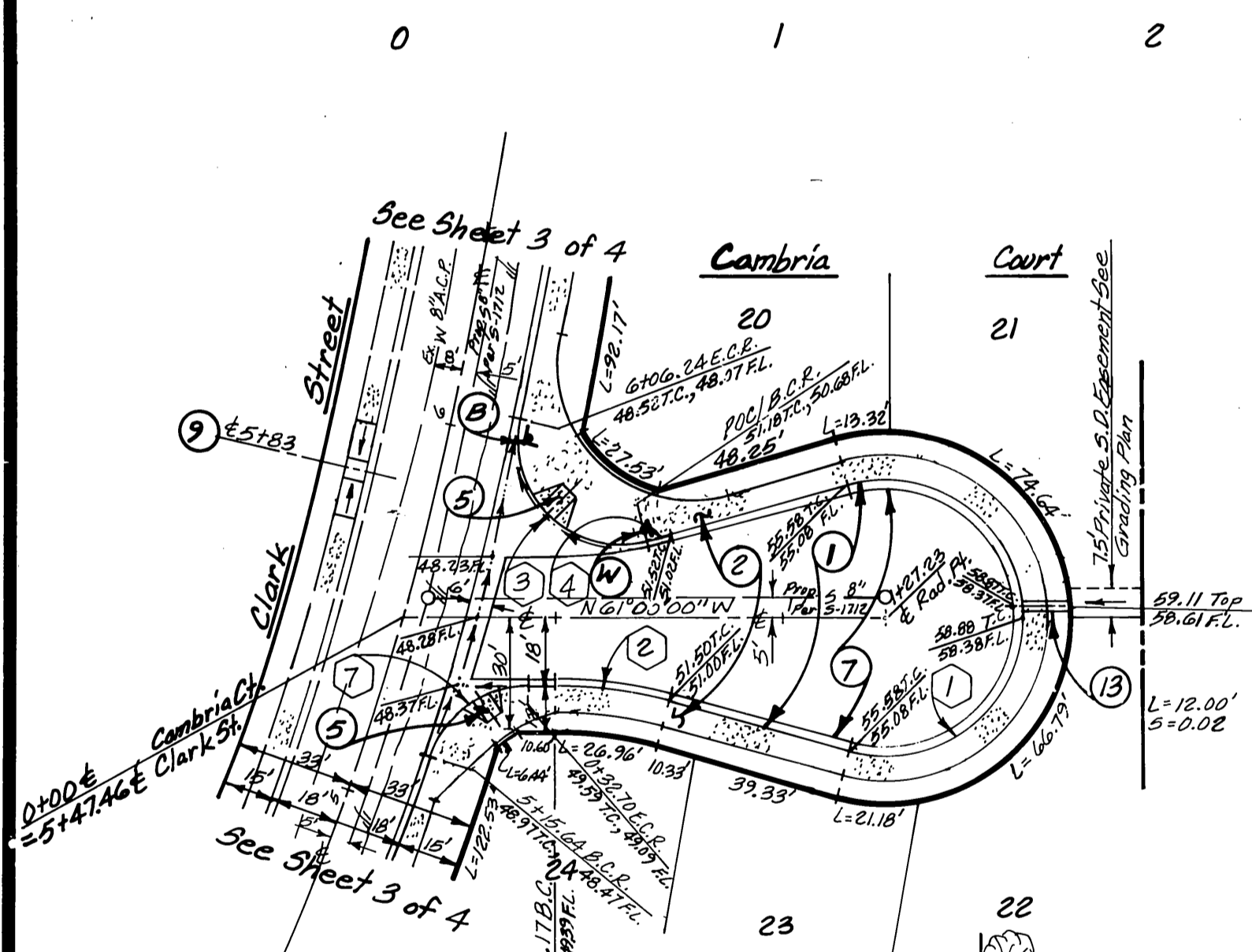
Street Plan and Profile
Tract 29219
Clark Street

ACCOUNT NO. R-3500
SHEET 3 OF 4

HORIZ. SCALE: 1"=40' VERT. SCALE: 1"=4'

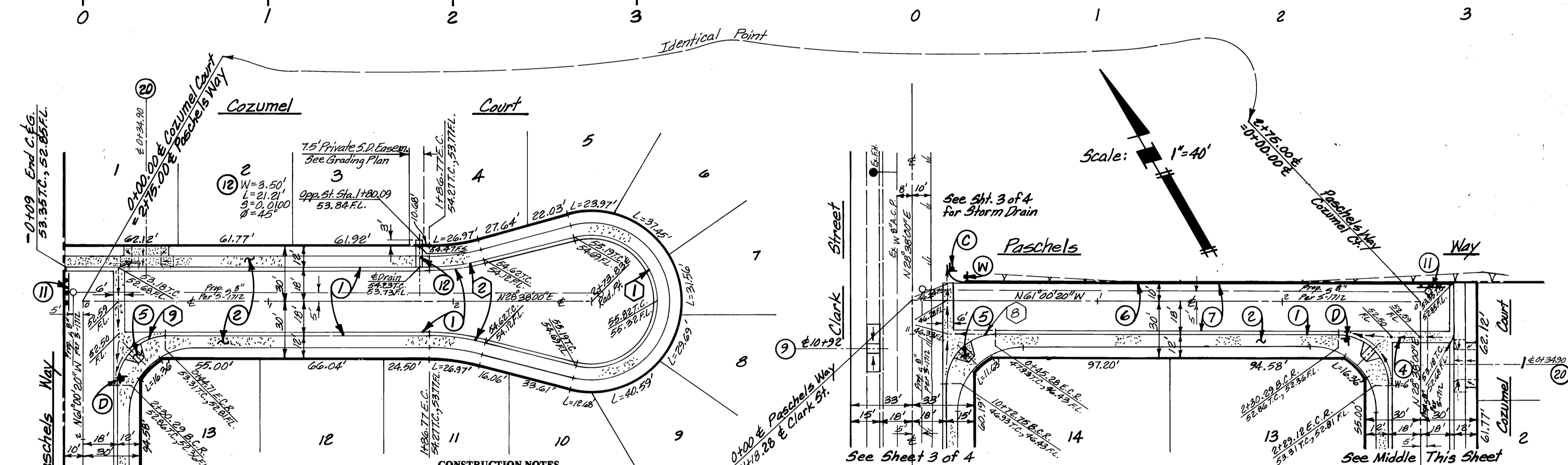


Profile Scale
 Horiz.: 1" = 40'
 Vert.: 1" = 4'

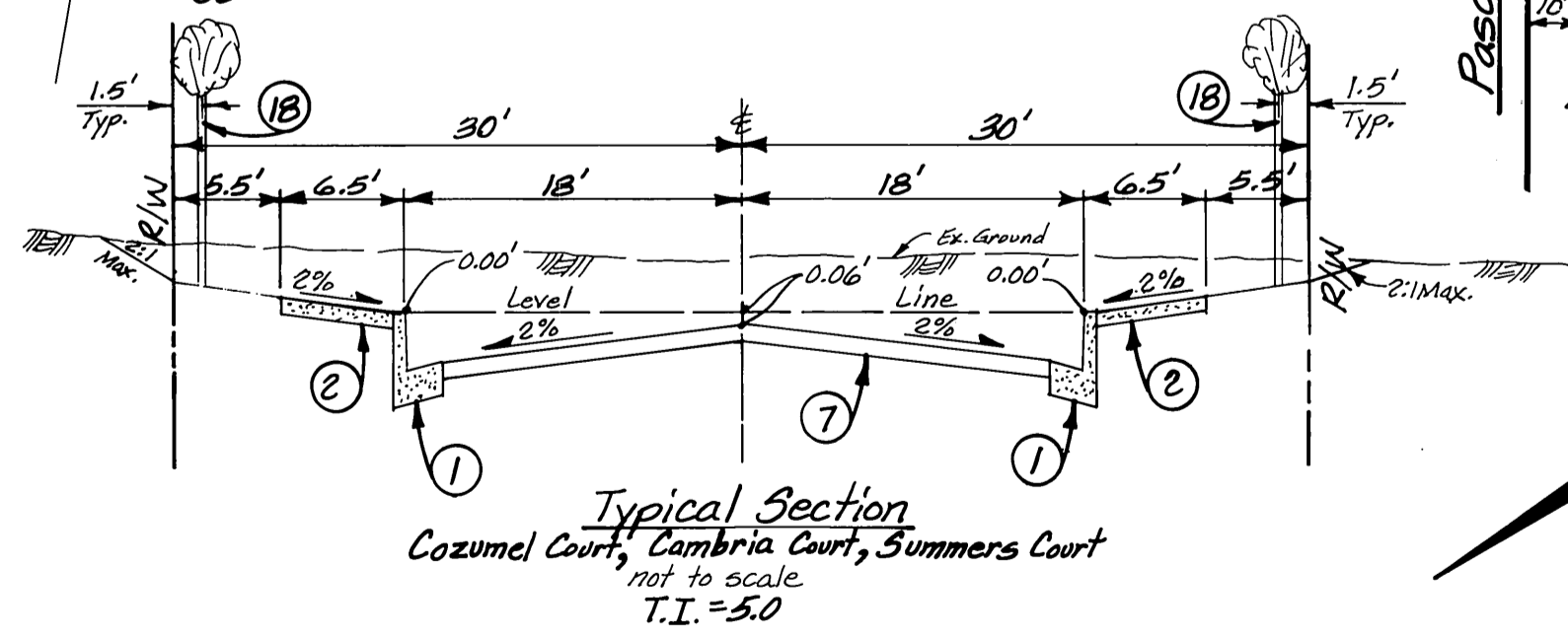


CURB CURVE DATA

1	R = 36.00' Δ = 210°00'00" L = 131.95'	8	R = 27.00' Δ = 90°21'40" L = 42.58' T = 27.17'
2	R = 115.00' Δ = 150°00'00" L = 30.11' T = 15.14'	9	R = 27.00' Δ = 69°38'20" L = 42.24' T = 26.83'
3	R = 27.00' Δ = 114°32'13" L = 54.13' T = 42.28'	10	R = 35.00' Δ = 104°37'00" L = 63.91' T = 45.30'
4	R = 115.00' Δ = 2°44'51" L = 5.51' T = 2.76'	11	R = 482.00' Δ = 7°34'57" L = 66.59' T = 33.35'
5	R = 27.00' Δ = 75°23'00" L = 35.52' T = 20.86'	12	R = 818.00' Δ = 10°18'04" L = 147.07' T = 73.73'
6	R = 27.00' Δ = 109°03'03" L = 51.39' T = 37.89'	13	R = 818.00' Δ = 10°18'04" L = 147.07' T = 73.73'
7	R = 27.00' Δ = 70°53'36" L = 33.41' T = 19.22'	14	R = 518.00' Δ = 2°41'00" L = 24.26' T = 12.13'



- CONSTRUCTION NOTES**
- Construction (Type I) 6" C/F curb and gutter per City Std. Drwg. No. 200
 - Const. curb sidewalk per City Std. Drwg. No. 325
 - Const. driveway approach (type curb-I) per City Std. Drwg. No. 302 and 303 (A=16", B=23")
 - Const. cross gutter per City Std. Drwg. No. 220, W = as shown
 - Const. (Type I) wheelchair ramp per City Std. Drwg. No. 304
 - Const. (Type I) asphalt concrete berm per City Std. Drwg. No. 250
 - Const. 2 1/2" asphalt concrete pavement over 4" crushed egg. Base Per S.R. 1537 R = 60
 - Const. 3" asphalt concrete pavement over 7" crushed egg. Base Per S.R. 1537 R = 59
 - Const. (type II) wheelchair ramp per City Std. Drwg. No. 304
 - Saw cut existing pavement to a straight neat line
 - Const. barricade per City Std. Drwg. No. 180
 - Const. curb outlet structure per City Std. Drwg. No. 410 (W, L and S as shown)
 - Const. under sidewalk drain per City Std. Drwg. No. 411
 - Remove existing pavement
 - Const. catch basin per City Std. Drwg. No. 405 W = 5.00', V = 3.94'
 - Install 18" R.C.P. (1000-D) @ S = 0.0050, remove plug and connect to Ex. 18" R.C.P.
 - Install type F-1 flexible delineators
 - Plant street trees per City Standard Details 1001 and 1002. Call the Tree Inspector of 351-6126 for field spotting of trees prior to digging plant pits to verify final quantities, species and locations.
 - Reverse frontage block wall per City Standard No. 704 (Split Face One Side, Facing Columbia Ave., Favor Color by Angelus Block)
 - Const. Modified Wheelchair Ramp/Driveway Approach (City Std. Drwg's 302, 303 and 304) Per Detail Sheet 1 of 4.



Underground Service Alert
 Call: TOLL FREE
 1-800-227-2800

Bench Mark: JT-F2
 P.K. Nail in curb return at the S.W. Corner of Columbia Ave. and Orange St. Per City F.D.77/48
 El. 827.25

Planning Department
 No Environmental Review Required
 City of Riverside Water System
 Approved By: [Signature] Date: 1/11/00



City of Riverside Business Tax Certificate #75184 Exp. Date 4/21/02

LINVILLE CIVIL ENGINEERS
 LAND SURVEYORS INC.
 Cucamonga Business Park
 9587 Arrow Route Suite H
 RANCHO CUCAMONGA, CA 91730
 (909) 989-3922
 File No. TR 5108-1

MARK	REVISIONS	APP. DATE

CITY OF RIVERSIDE
 PUBLIC WORKS DEPARTMENT

APPROVED BY: [Signature] DATE: 2-17-00
 PRINCIPAL ENGINEER: R.M. Drath
 PARK DEPARTMENT
 TRAFFIC DIVISION
 P.W. ENGINEER MANAGER
 STREET SERVICES

Street Plan and Profile
 Tract 29219
 Paschels Way
 Cozumel Court
 Cambria Court

ACCOUNT NO. R-3500
 SHEET 4 OF 4

HORIZ. SCALE: 1" = 40'
 VERT. SCALE: 1" = 4'

INDEXED 5-2-2000 LFT