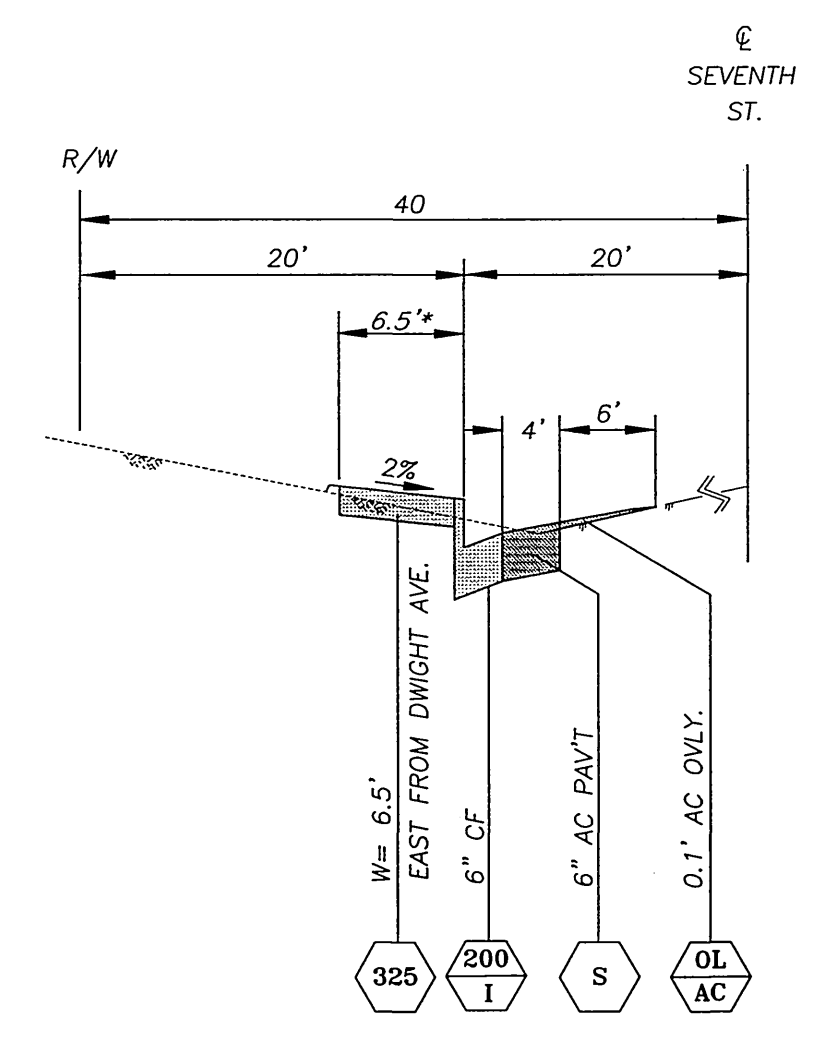
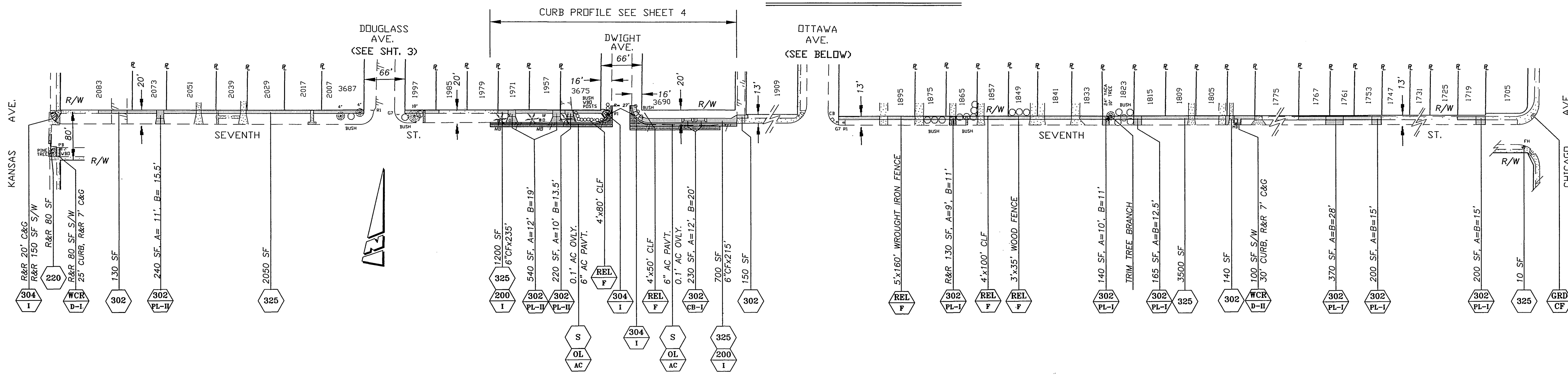




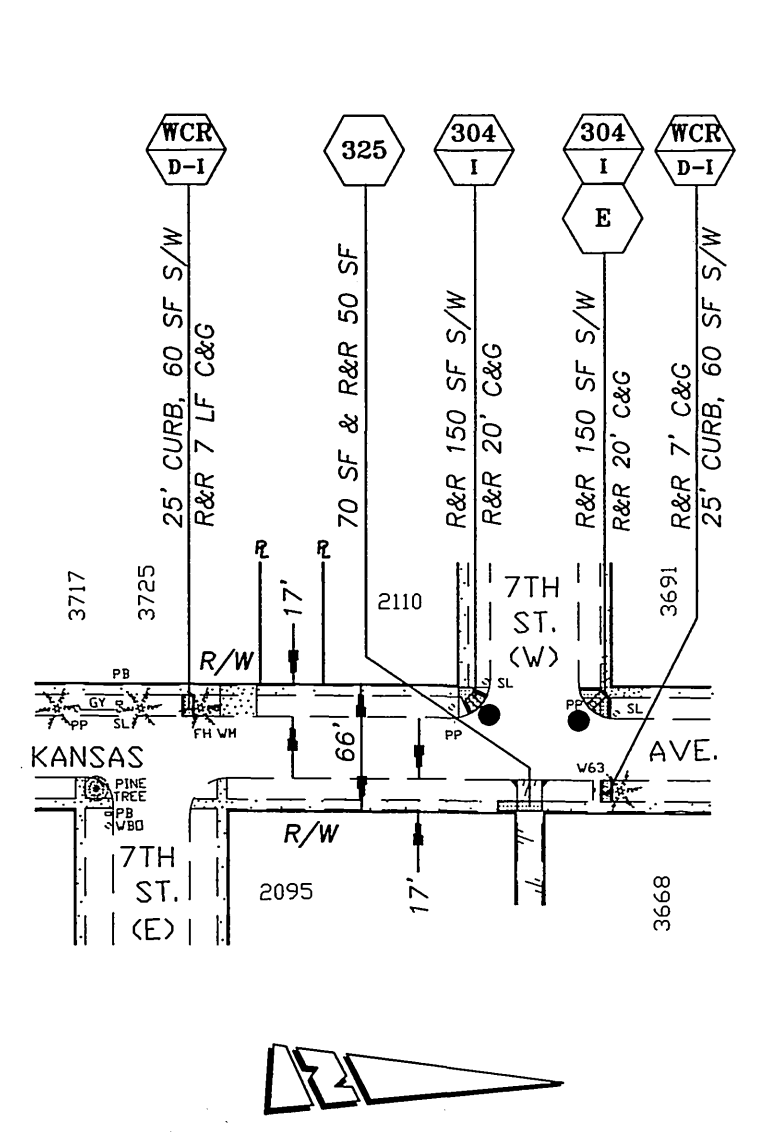
**SEVENTH STREET**



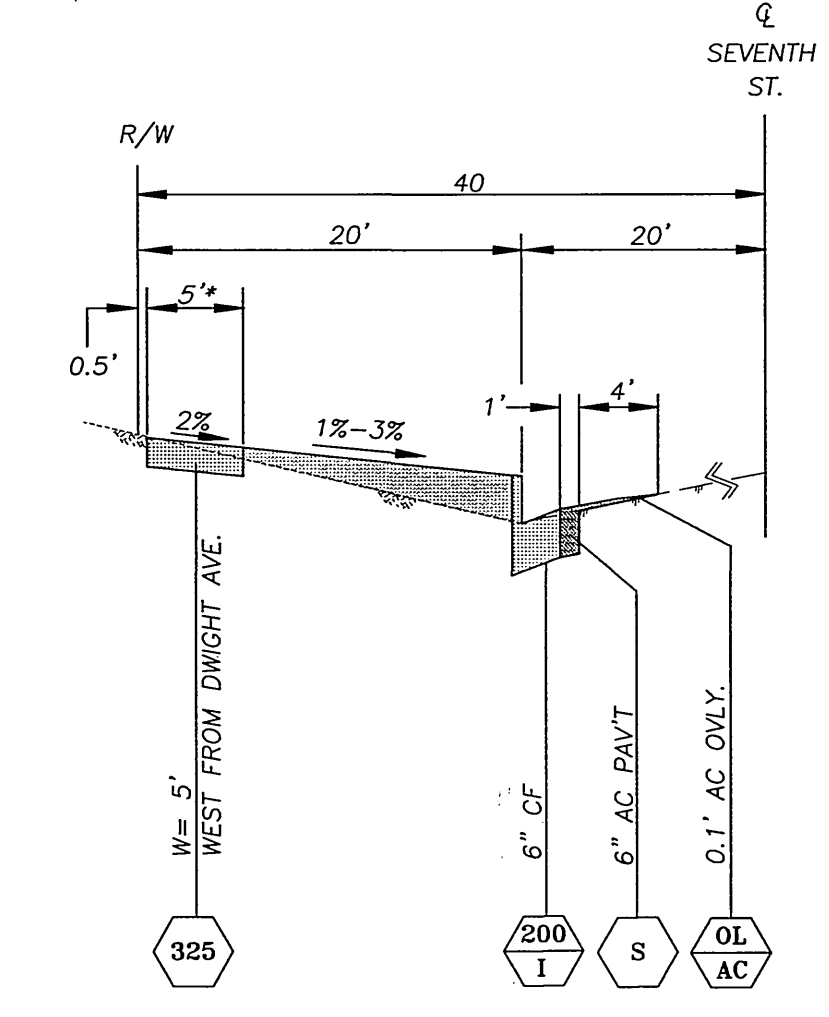
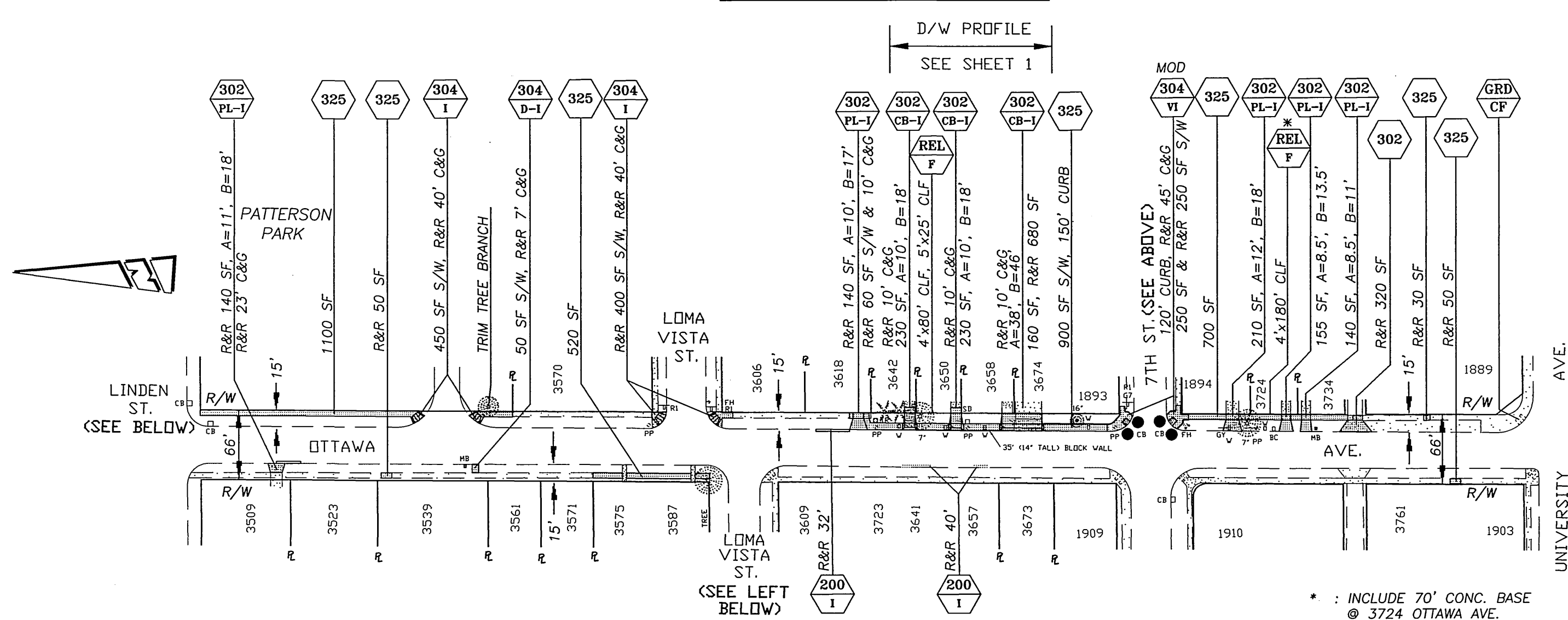
SEVENTH ST. WIDENING TYPICAL SECTION (EAST FROM DWIGHT AVE.)

(NTS)  
\* : MINIMUM S/W WIDTH SHALL BE 4' @ UTILITIES.

**KANSAS AVENUE**



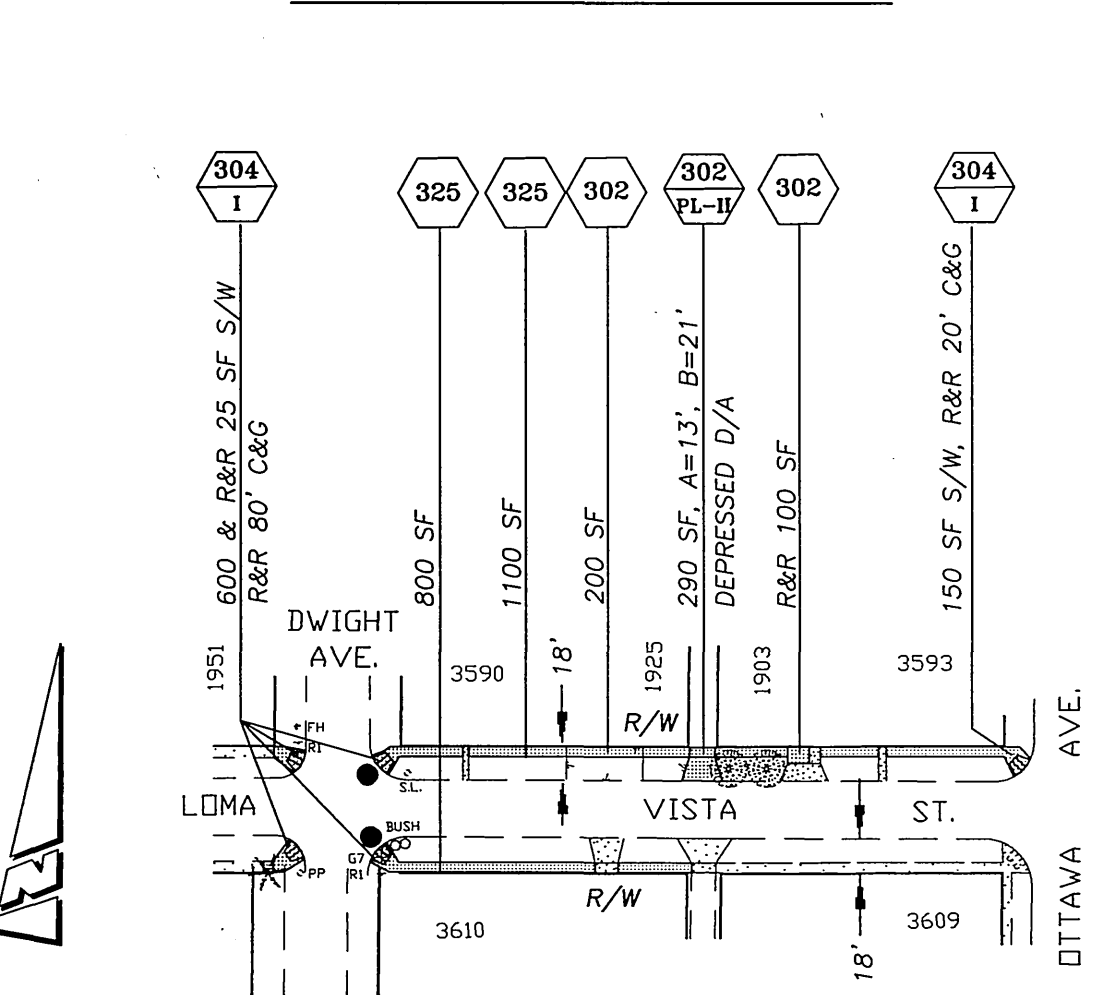
**OTTAWA AVENUE**



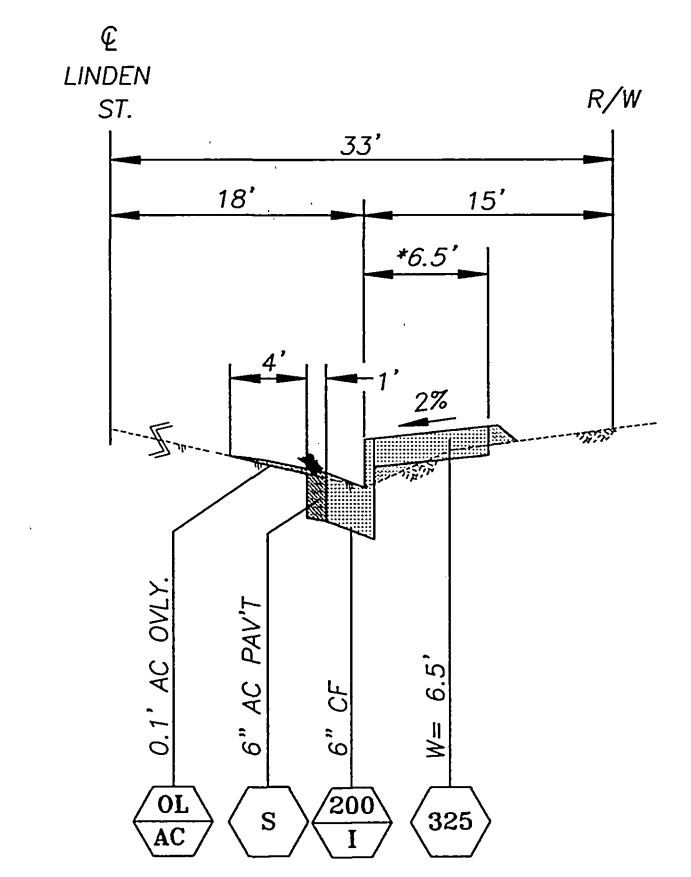
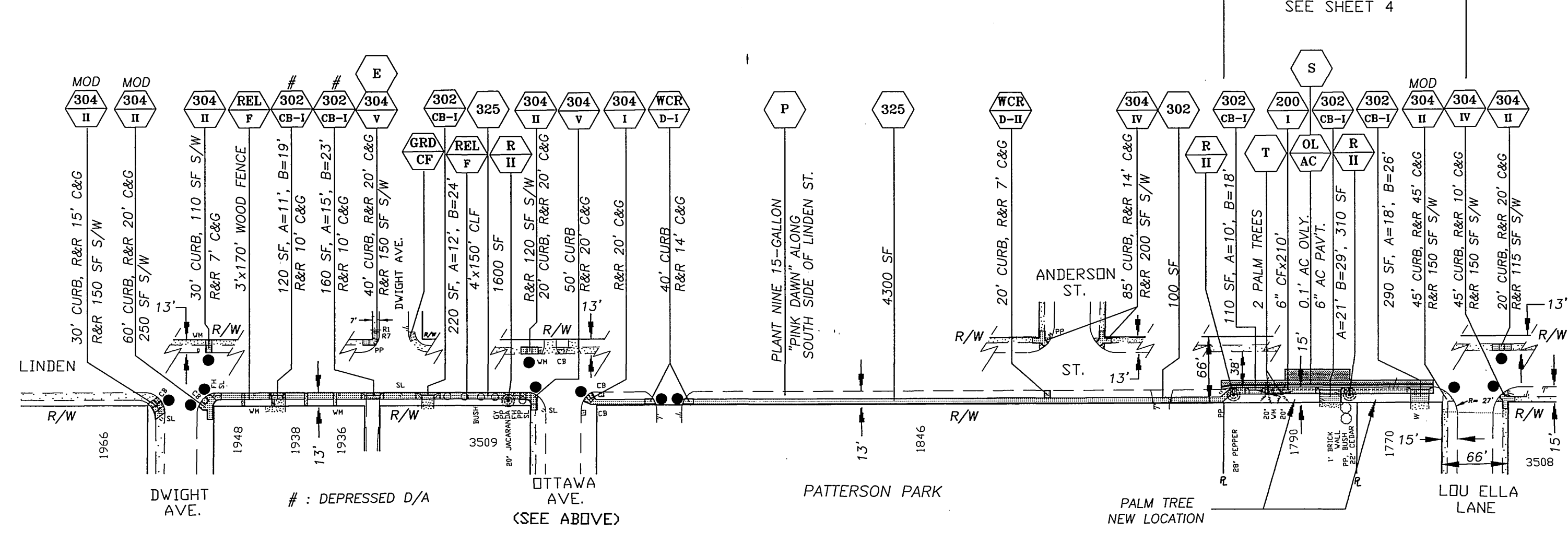
SEVENTH ST. WIDENING TYPICAL SECTION (WEST FROM DWIGHT AVE.)

(NTS)  
\* : MINIMUM S/W WIDTH SHALL BE 4' @ UTILITIES.

**LOMA VISTA STREET**



**LINDEN STREET**



LINDEN ST. WIDENING TYPICAL SECTION (WEST FROM LOU ELLA LN.)

(NTS)  
\* : MINIMUM S/W WIDTH SHALL BE 4' @ UTILITIES.

ENGINEER IN RESPONSIBLE CHARGE  
*Lauren F. Caldwell*  
LAUREN F. CALDWELL  
R.C.E. No. 39441 expires 12/31/2001  
DATE 2/29/2000



DESIGNED BY	FYL	DRAWN BY	FYL	CHECKED BY	
MARK		REVISIONS		APPR.	DATE

CITY OF RIVERSIDE, CALIFORNIA  
PUBLIC WORKS DEPARTMENT

APPROVED BY	DATE
PRINCIPAL ENGINEER	3/24/00
INSPECTION	2/28/00
STREET SERVICES	2/15/00
SURVEYOR	MSB 2/15/00
TRAFFIC ENGINEER	2/15/00
PARK & REC. DEPT.	2/16/00

**SIDEWALK CONSTRUCTION (CDBG 1998/99)**

ACCT. NO. 220-528200-440120-12015  
220-528200-440120-12136  
220-528200-440120-12140

**R-3515**

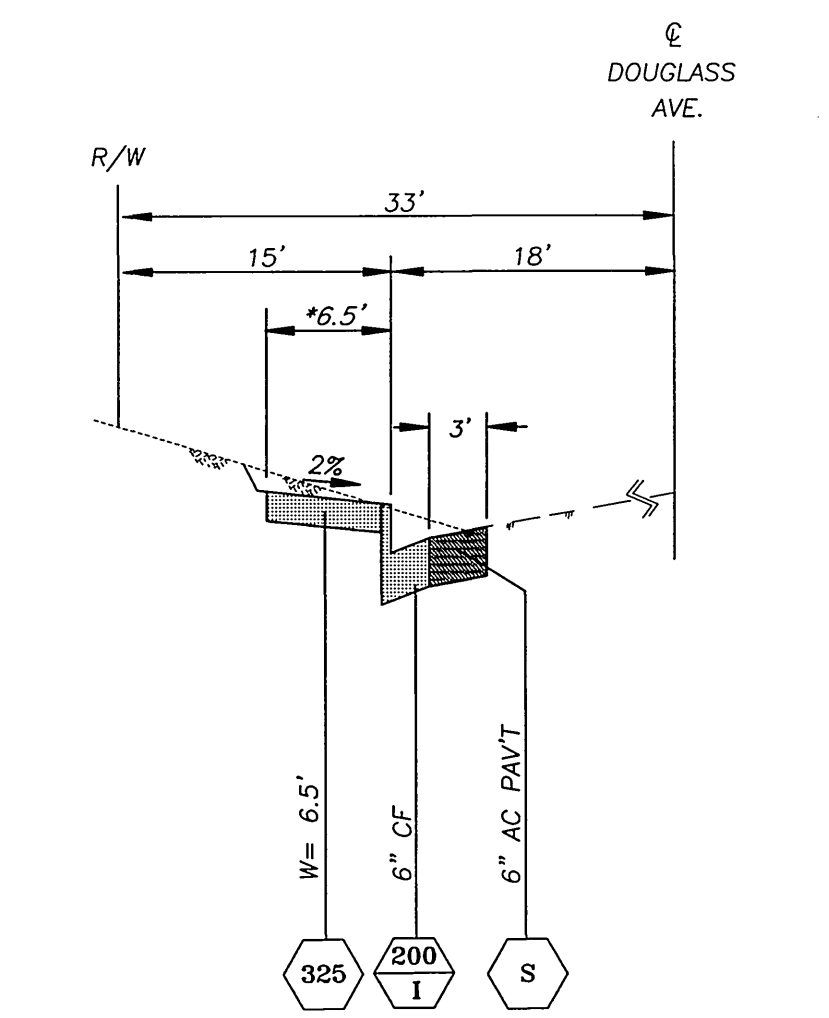
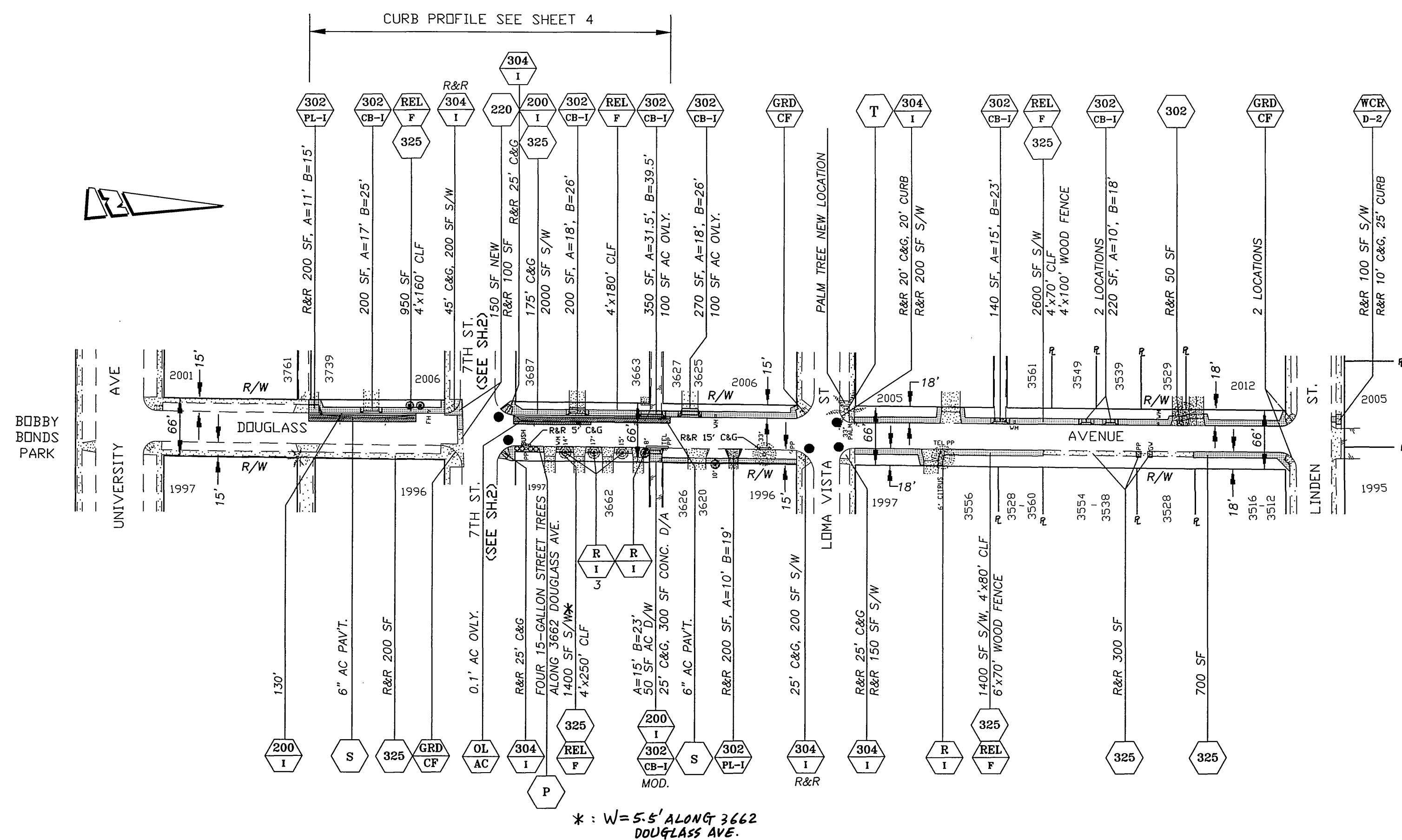
SHEET 2 OF 4

FILE: LFRANK\U:\DWG\3515-02  
PARK & REC.: PC-4209-S/P

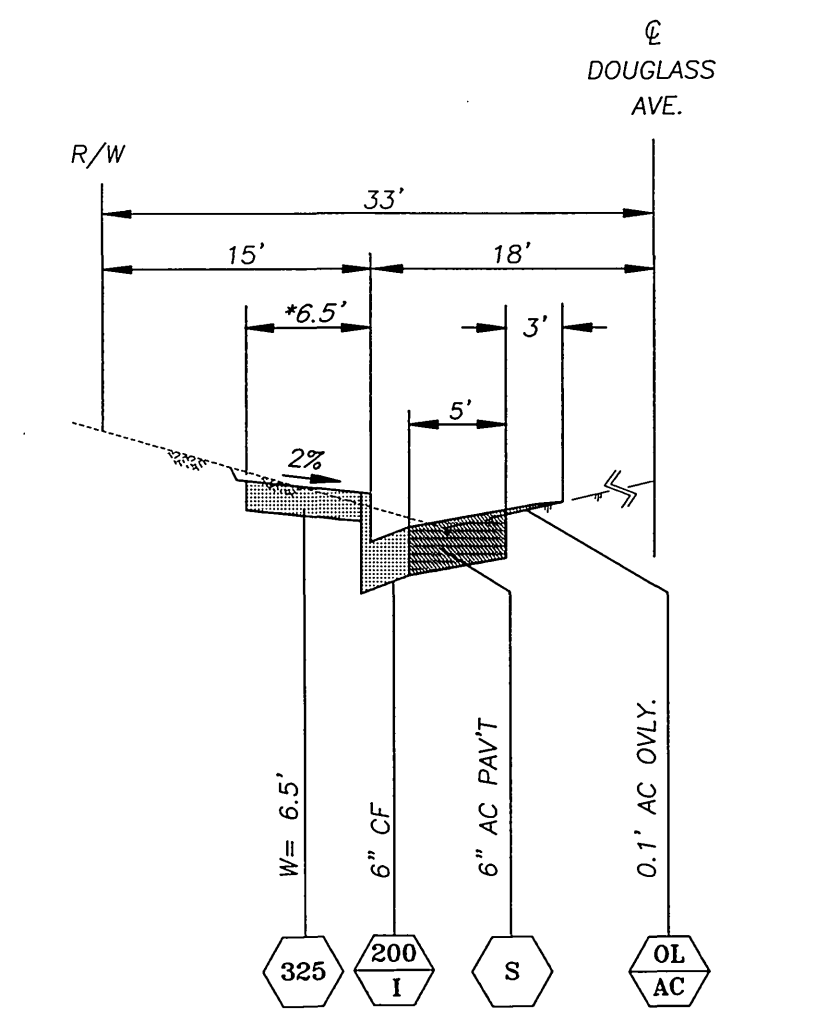
HORIZ. SCALE: 1" = 100'

INDEXED 5-4-2000 4/11

**DOUGLASS AVENUE**

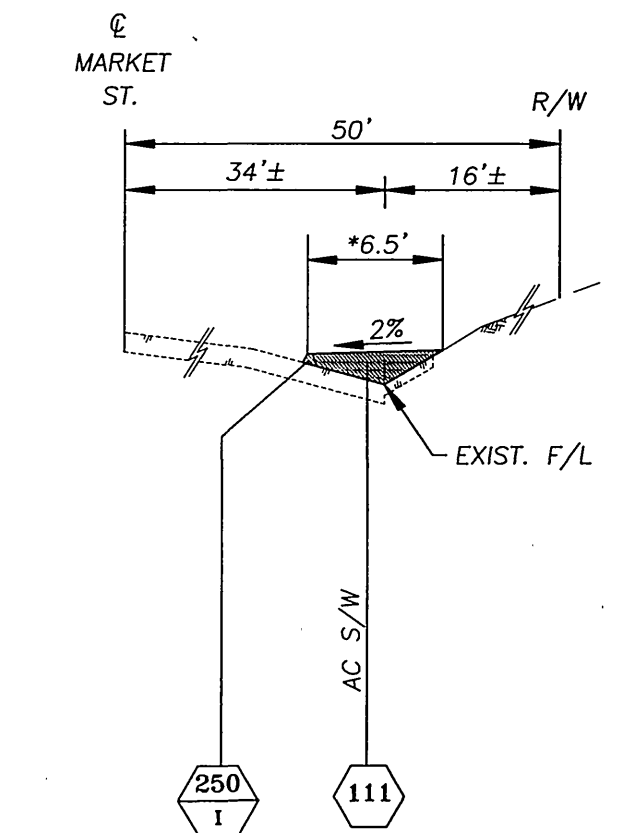
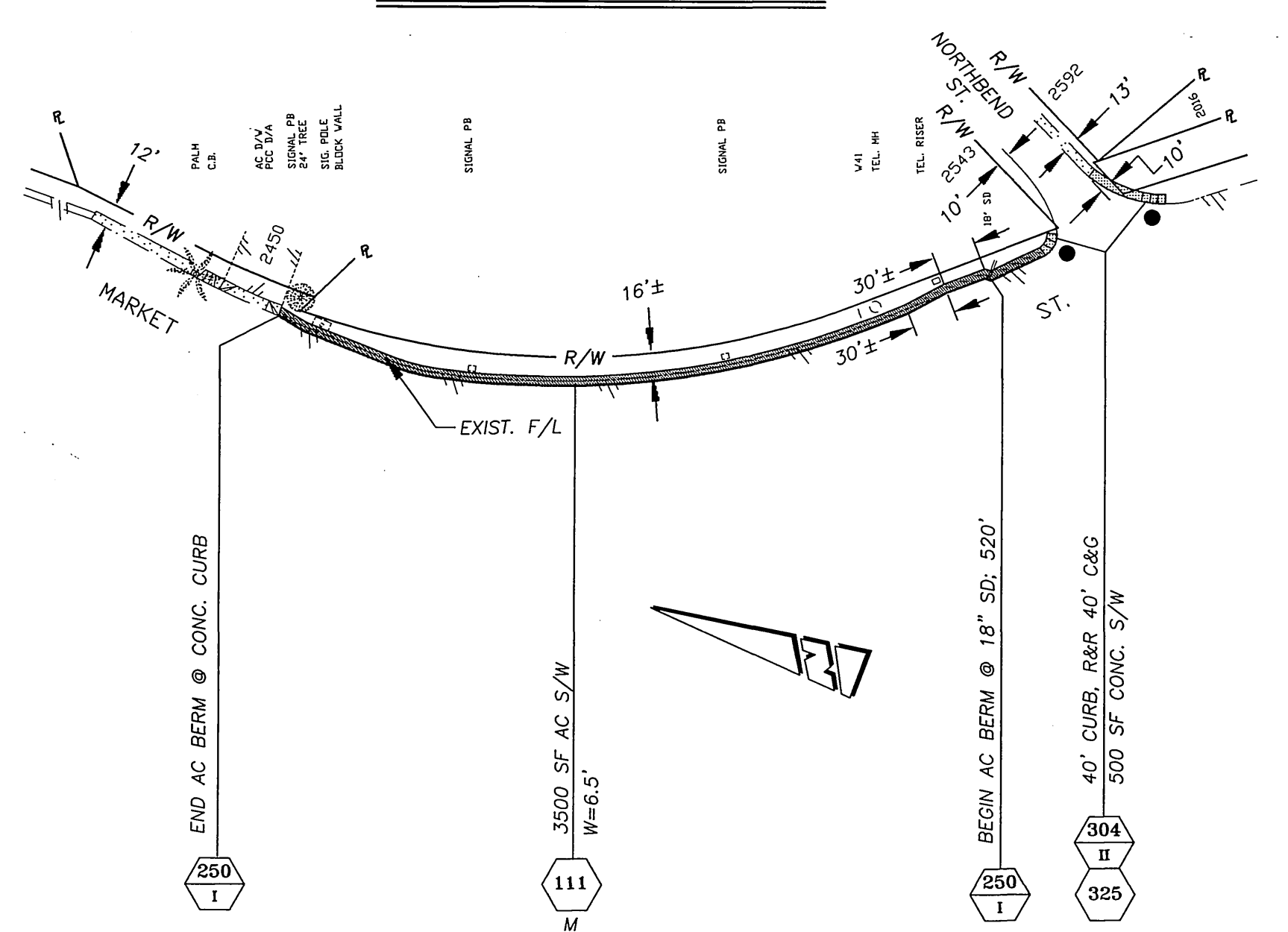


DOUGLASS AVENUE  
(SOUTH FROM 7TH ST.)  
STREET WIDENING TYPICAL SECTION  
(NTS)  
\* : MINIMUM S/W WIDTH SHALL BE 4' @ UTILITIES.



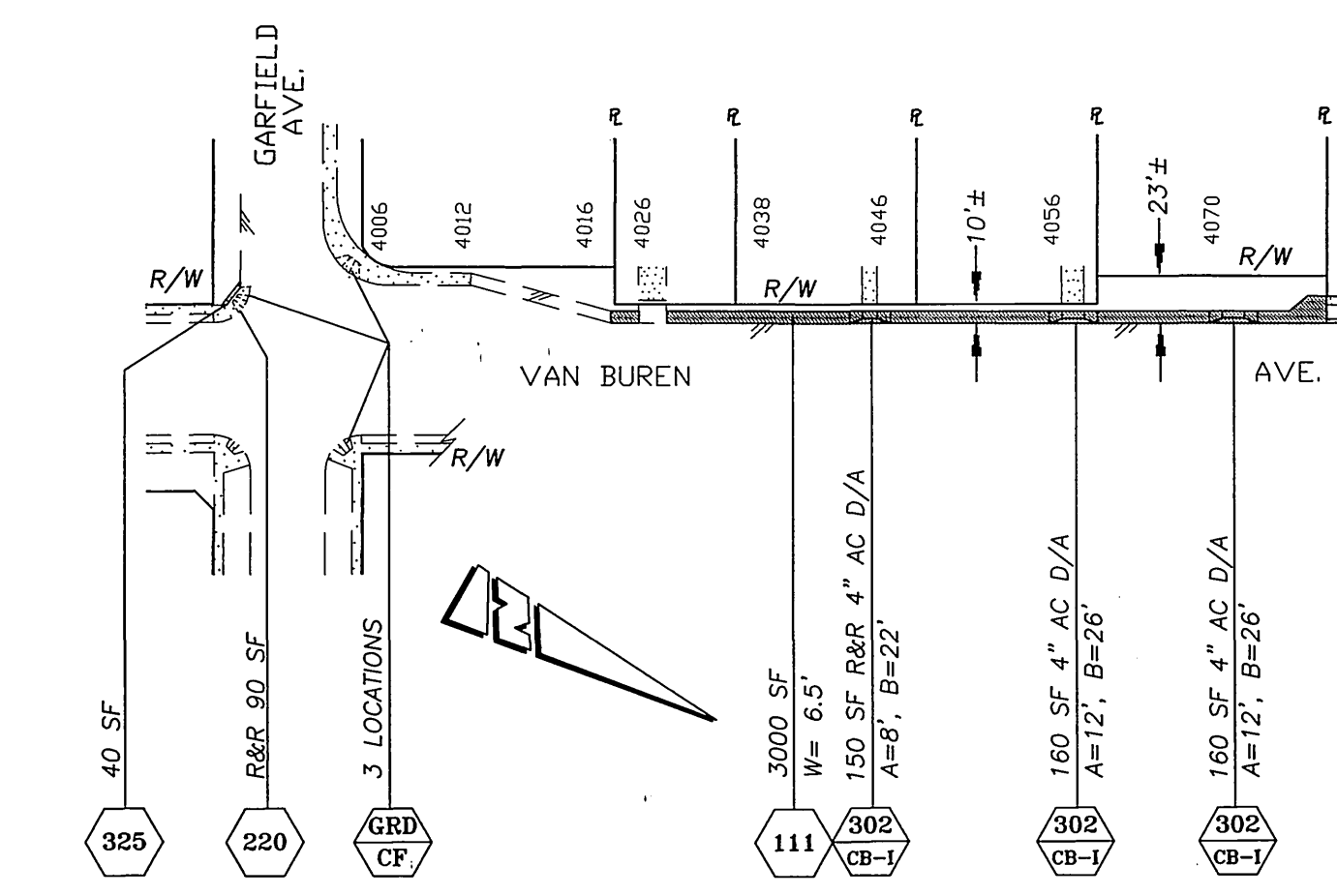
DOUGLASS AVENUE  
(NORTH FROM 7TH ST.)  
STREET WIDENING TYPICAL SECTION  
(NTS)  
\* : MINIMUM S/W WIDTH SHALL BE 4' @ UTILITIES.

**MARKET STREET**



MARKET ST. AC SIDEWALK  
TYPICAL SECTION  
(NTS)  
\* : MINIMUM S/W WIDTH SHALL BE 4' AT UTILITIES.  
M : FULL DEPTH AC SIDEWALK.

**VAN BUREN BLVD.**



ENGINEER IN RESPONSIBLE CHARGE  
*Lauren F. Caldwell*  
LAUREN F. CALDWELL  
R.C.E. No. 39441 expires 12/31/2001  
DATE 3/29/2000



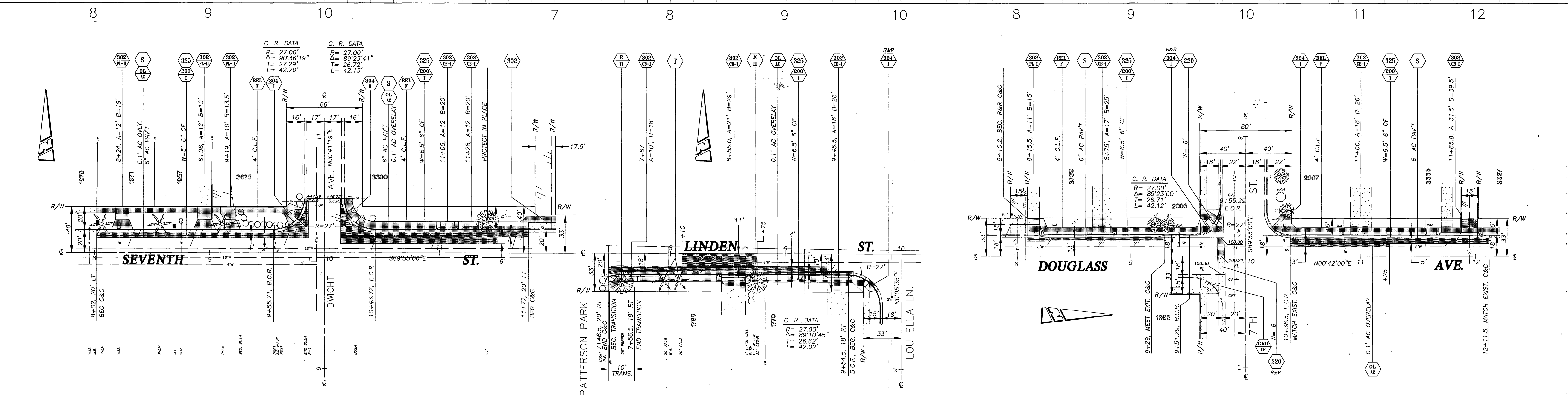
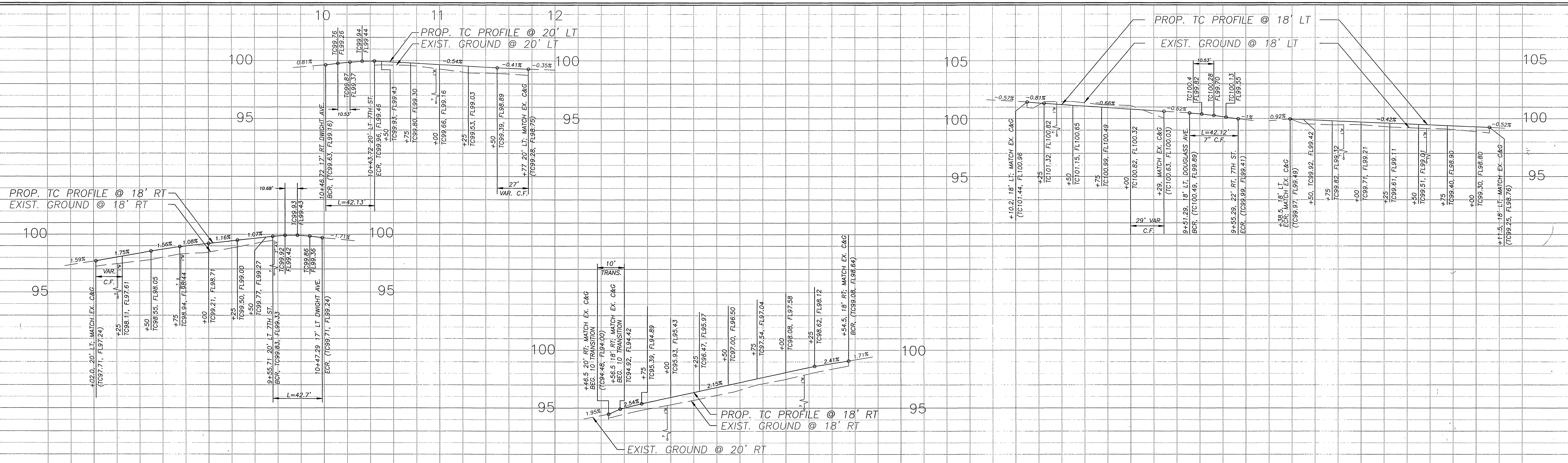
MARK	REVISIONS	APPR.	DATE

CITY OF RIVERSIDE, CALIFORNIA PUBLIC WORKS DEPARTMENT	
APPROVED BY	DATE
ENGINEERING MANAGER	3/30/00
PRINCIPAL ENGINEER	3/30/00
INSPECTION	3/28/00
STREET SERVICES	3/28/00
SURVEYOR	3/28/00
TRAFFIC ENGINEER	3/28/00
PARK & REC. DEPART.	3/28/00

**SIDEWALK CONSTRUCTION (CDBG 1998/99)**  
HORIZ. SCALE: 1" = 100'

ACCT. NO. 220-528200-440120-12015  
220-528200-440120-12136  
220-528200-440120-12140  
**R-3515**  
SHEET 3 OF 4  
FILE: LFRANK\U:\DWG\3515-03  
PARK & REC.: PC-4209-S/P

INDEXED 5-4-2000 G/H



SEE SHEET 2 FOR TYPICAL SECTIONS

SEE SHEET 2 FOR TYPICAL SECTIONS

SEE SHEET 3 FOR TYPICAL SECTIONS

T.B.M. : @ LINDEN ST. & LOU ELLA LN.  
EL. : 100.00 (ASSUMED)  
P.K. & CITY TAG AT THE INTERSECTION  
OF LINDEN ST. & LOU ELLA LN.

T.B.M. : @ 7TH ST. & DOUGLASS AVE.  
EL. : 100.00 (ASSUMED)  
AT TOP OF 2" I.P. (DOWN 6" IN  
MONUMENT WELL AT INTERSECTION  
OF 7TH ST. & DOUGLASS AVE.

T.B.M. : @ 7TH ST. & DWIGHT AVE.  
EL. : 100.00 (ASSUMED)  
P.K. & CITY TAG AT THE INTERSECTION  
OF 7TH ST. & DWIGHT AVE.

ENGINEER IN RESPONSIBLE CHARGE  
*Lauren F. Caldwell*  
LAUREN F. CALDWELL  
R.C.E. No. 39441 expires 12/31/2001  
DATE 3/29/2000

REGISTERED PROFESSIONAL ENGINEER  
LAUREN F. CALDWELL  
No. 39441  
Exp. 12-31-2001  
CIVIL  
STATE OF CALIFORNIA

MARK	REVISIONS	APPR.	DATE

CITY OF RIVERSIDE, CALIFORNIA  
PUBLIC WORKS DEPARTMENT

APPROVED BY: [Signature]  
ENGINEERING MANAGER

APPROVED BY: [Signature]  
PUBLIC WORKS DIRECTOR

DATE 3-30-00

SIDEWALK CONSTRUCTION (CDBG 1998/99)

ACCT. NO. 220-528200-440120-12115  
220-528200-440120-12136  
220-528200-440120-12140

R-3515

SHEET 4 OF 4

FILE: LFRANK\DWG\R3515-04  
PARK & REC.: PC-4209-S/P

INDEXED 5-1-2000 JFT