

RIVERSIDE CITY OF RIVERSIDE CALIFORNIA

GENERAL CONSTRUCTION NOTES:

- CONSTRUCTION SHALL BE IN ACCORDANCE WITH THE CITY OF RIVERSIDE STANDARD DRAWINGS AND STANDARD SPECIFICATIONS FOR PUBLIC WORKS CONSTRUCTION, 1997 EDITION.
- CONFLICTING UTILITIES IN THE CONSTRUCTION AREA SHALL BE RELOCATED BY OTHERS PRIOR TO CONSTRUCTION.
- EXISTING UTILITIES SHOWN ON THE PLANS, ARE PLOTTED FROM UTILITY RECORDS. THE CONTRACTOR IS REQUIRED TO TAKE DUE PRECAUTIONARY MEASURES TO LOCATE AND PROTECT ALL UTILITIES WHETHER OR NOT SHOWN ON THESE PLANS.

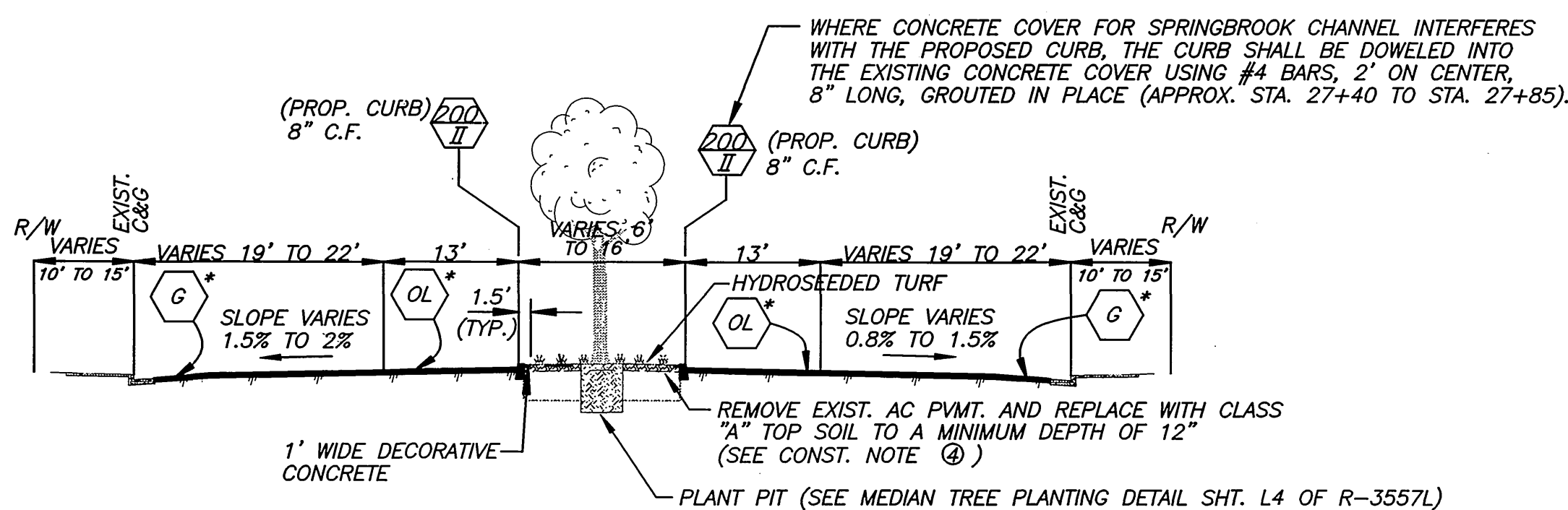
CONSTRUCTION LEGEND:

- NUMBERS ABOVE 100 IN A HEXAGON ON THE PLAN REFER TO THE RESPECTIVE STANDARD DRAWING AND SHALL BE CONSTRUCTED ACCORDINGLY, UNLESS MODIFICATIONS ARE NOTED ON THE PLAN. ANY NUMBER SHOWN BELOW THE STANDARD DRAWING NUMBER INDICATES THE SPECIFIC ALTERNATE TO BE CONSTRUCTED.
- 3/4" WATER METER TO BE INSTALLED BY PUBLIC UTILITIES DEPT., WATER DIVISION.
- INSTALL 2" DIAMETER PVC SCHEDULE 40 SLEEVING, EXTENDING 1' INTO PLANTING AREA OF MEDIAN, WITH A MINIMUM OF 24" COVER, TERMINATING IN BROOKS #3 PULLBOX OR CITY APPROVED EQUAL WITH TRAFFIC COVER AT EACH END, FOR IRRIGATION CONTROL WIRES.
- INSTALL 3" DIAMETER PVC SCHEDULE 40 SLEEVING, EXTENDING 1' INTO PLANTING AREA OF MEDIAN, 24" COVER, FOR IRRIGATION SUPPLY LINES.
- ADJUST SEWER OR STORM DRAIN MANHOLE COVER TO GRADE.
- WHERE THE PAVEMENT OVERLAY IS ADJACENT TO THE GUTTER LIP, COLD MILL THE EXIST. PAVEMENT TO THE DEPTH OF 0.1" BELOW THE GUTTER LIP AND DAYLIGHT TO MEET THE EXIST. PAVEMENT IN 5'. WHERE THE PAVEMENT OVERLAY IS TO MEET THE EXIST. PAVEMENT AT THE JOINT LINE, COLD MILL THE EXIST. PAVEMENT TO A DEPTH OF 0.1" BELOW THE JOINT LINE AND DAYLIGHT TO MEET THE EXISTING PAVEMENT IN A DISTANCE OF 10' FROM THE JOINT LINE.
- OVERLAY THE EXISTING PAVEMENT WITH 0.1" OF DENSE GRADED ASPHALT CONCRETE. WITHIN THE OVERLAY AREA, REPLACE EXIST. TRAFFIC DETECTOR LOOPS (APPROXIMATE QUANTITY: 53, REFERENCE PLAN R-2830 FOR THE LOCATION OF THE LOOPS). ALSO WITHIN THE OVERLAY AREA, ADJUST THE EXISTING SEWER AND STORM DRAIN MANHOLE COVERS AND WATER GATE VALVE COVERS TO GRADE (APPROXIMATE QUANTITY: MANHOLE COVERS, 12; GATE VALVE COVERS, 6).

GENERAL NOTES FOR PUBLIC LANDSCAPES:

- ALL RELATED WORK SHALL CONFORM TO THE CITY OF RIVERSIDE PARK AND RECREATION DEPARTMENT STANDARDS AND SPECIFICATIONS FOR PLANTING AND IRRIGATION WORK. (SPECIFICATIONS SECTION 02441 AND 02480).
- WHEN CALLING FOR INSPECTIONS CONTACT THE ENGINEER A MINIMUM OF 72 HOURS IN ADVANCE AT (909) 826-5889 TO SCHEDULE AN INSPECTION. A FIELD NOTICE WILL BE ISSUED AS WRITTEN APPROVAL FOR EACH STAGE OF INSPECTION. A VERBAL APPROVAL WILL NOT BE ACCEPTABLE. INSPECTIONS ARE REQUIRED PER THE STANDARD SPECIFICATION, AND INCLUDE BUT ARE NOT NECESSARILY LIMITED TO THE FOLLOWING:
 - AFTER COMPLETION OF FINAL GRADING OF THE MEDIAN AND WHEN ALL UTILITY SERVICES AND SEWER LATERALS HAVE BEEN MARKED, BUT PRIOR TO INITIATING ANY LANDSCAPE WORK WITHIN THE PUBLIC RIGHT OF WAY;
 - AT TIME OF INSTALLATION OF IRRIGATION SYSTEMS AND CONSTANT PRESSURE MAINLINES, BUT PRIOR TO BACKFILL OF TRENCHES FOR SAME (NOTE: MAINLINES MUST BE PRESSURE TESTED IN THE PRESENCE OF THE PARK PROJECTS INSPECTOR);
 - AT TIME OF INSTALLATION OF IRRIGATION VALVES, LATERALS AND HEADS;
 - FOR SPOTTING OF ALL TREES PRIOR TO DIGGING PLANTING PITS;
 - WHILE DIGGING PLANT PITS AND PLANTING/RELOCATING TREES;
 - AFTER PLANTING AND ALL OTHER INDICATED OR SPECIFIED WORK HAS BEEN COMPLETED, FOR START OF MAINTENANCE;
 - AT SUBSTANTIAL COMPLETION OF THE PROJECT FOR CITY'S ACCEPTANCE TO START THE REQUIRED MAINTENANCE PERIOD;
 - AT THE END OF THE MAINTENANCE PERIOD, THE CONTRACTOR SHALL CALL THE ENGINEER AT (909) 826-5889 FOR A FINAL ACCEPTANCE INSPECTION IN ORDER TO BE RELEASED FROM MAINTENANCE. CONTRACT BONDS WILL NOT BE RELEASED UNTIL AFTER RECEIPT OF WRITTEN NOTIFICATION FROM THE CITY THAT THE PROJECT HAS PASSED FINAL ACCEPTANCE INSPECTION AND THE CITY IS ASSUMING MAINTENANCE RESPONSIBILITIES.
- THE CONTRACTOR SHALL BE RESPONSIBLE TO MAINTAIN ALL PLANTINGS FOR A MINIMUM PERIOD OF ONE YEAR (365 CALENDAR DAYS).

NOTE: IN THE INTEREST OF PUBLIC SAFETY AND MAINTENANCE, THE ENGINEERING INSPECTOR SHALL HAVE THE AUTHORITY TO REVISE THE TREE QUANTITIES AND LOCATIONS SHOWN OF APPROVED PLANS BASED UPON FIELD CONDITIONS FOUND AT THE TIME OF INSTALLATION OF THE TREES.



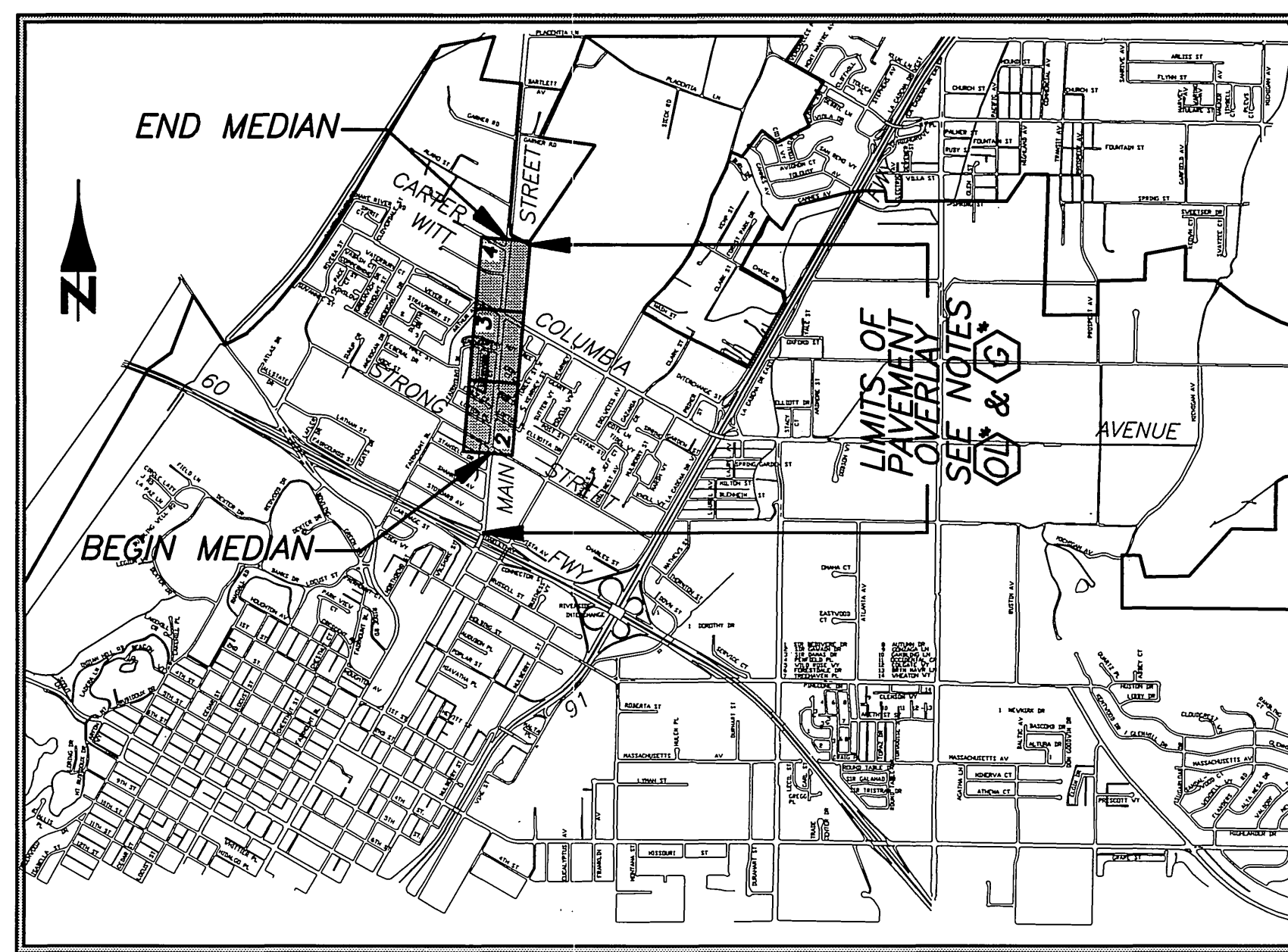
PROPOSED MEDIANS ON MAIN STREET
FROM STRONG STREET TO CARTER AVENUE*
TYPICAL SECTION

(*LIMITS OF PAVEMENT OVERLAY, FROM OAKLEY AVE. TO 400'± N'LY OF CARTER AVE.)

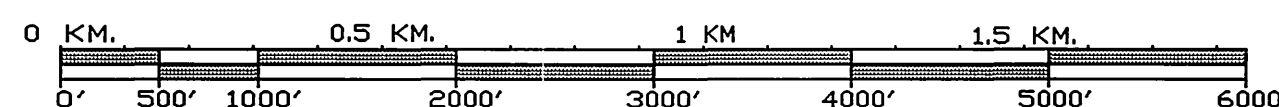
PUBLIC WORKS DEPARTMENT MAIN STREET MEDIAN ISLANDS

FROM STRONG STREET TO 200'± N'LY OF CARTER AVENUE

(*PAVEMENT OVERLAY FROM OAKLEY AVE.
TO 400'± N'LY OF CARTER AVE.)



PROJECT LOCATION MAP



SCALE: 1" = 1,000'

EXISTING UNDERGROUND UTILITIES:

SANITARY SEWER	8" S	TELEPHONE CONDUIT	
WATER LINE	6" W	ELECTRICAL CONDUIT	E
STORM DRAIN	24" SD	ELECTROLIER LIGHTING CONDUIT	ELC
GAS LINE	3" G	TRAFFIC SIGNAL	SIG
ABANDONED UTILITY	6" G (ABAND.)	FIRE ALARM	F

EXISTING TOPOGRAPHY:

BLOCK WALL	POLE & GUY ANCHOR	PEDESTRIAN PUSH BUTTON
BOARD FENCE	POWER POLE	RAILROAD TRACKS
WIRE FENCE	TELEPHONE POLE	RAILROAD SIGN
CHAIN LINK FENCE	TELEPHONE RISER	RAILROAD SIGNAL
SANITARY SEWER M.H.	JOINT USE POLE	TRAFFIC SIGNAL
SANITARY SEWER CLEANOUT	PULL BOX	TRAFFIC SIGNAL ON MAST ARM
STORM DRAIN M.H.	TRAFFIC SIGN	TRAFFIC SIGNAL CONTROLLER
IRRIGATION WEIR	PARKING METER	TRAFFIC SIGNAL LOOP DETECTOR
WATER M.H.	FIRE ALARM BOX	STREET LIGHT & TRAFFIC SIGNAL ON MAST ARM
GAS M.H.	STREET NAME SIGN	STREET LIGHT (UPRIGHT)
ELECTRIC M.H.	GAS METER	STREET LIGHT ON MAST ARM
TELEPHONE M.H.	MAIL BOX	WALK-DON'T WALK PEDESTRIAN SIGNAL
WATER METER	FAUCET	ELECTRICAL TEST STATION
FIRE HYDRANT	WHEEL STOP	A.C. BERM
SPRINKLER HEAD		
VALVE		
AIR VALVE		
AIR VENT		
BUS STOP SIGN		
BLOW-OFF VALVE		
IRRIGATION STAND PIPE		
CONCRETE		
ASPHALT		
BUILDING		
EDGE OF PAVEMENT		

CONSTRUCTION NOTES:

- ALL IRRIGATION LINES TO BE INSTALLED UNDER HARDSCAPE AREAS SHALL BE INSTALLED IN SCHEDULE 40 PVC SLEEVES. SLEEVE SIZE SHALL BE TWICE THE DIAMETER OF THE IRRIGATION PIPE SIZE (MIN.).
- ALL IRRIGATION CONTROL WIRES TO BE INSTALLED UNDER HARDSCAPE AREAS SHALL BE INSTALLED IN SCHEDULE 40 PVC SLEEVES (MIN.).
- ALL IRRIGATION VALVES, BALL VALVES, QUICK COUPLERS AND BOXES ARE TO BE LOCATED IN PLANTING AREAS.
- REMOVE EXIST. STRUCTURAL SECTION BETWEEN PROPOSED CURBS AND FILL WITH CLEAN EARTHEN MATERIAL TO ±1" BELOW PROPOSED T.C. ELEVATION COMPACTED TO 85% RELATIVE COMPACTION AT PLANTING AREAS & 95% RELATIVE COMPACTION BENEATH DECORATIVE PAVEMENT. ALLOW FOR SOIL AMENDMENTS PER SECTION 02480.

SHEET INDEX:

STREET PLANS (R-3557)		IRRIGATION PLANS		LANDSCAPE PLANS	
SHEET NO.	DESCRIPTION	SHEET NO.	DESCRIPTION	SHEET NO.	DESCRIPTION
1	TITLE SHEET & TYPICAL STREET SECTION	1-4	MEDIAN ISLAND IRRIGATION - (R-3557)	1-4	MEDIAN ISLAND LANDSCAPING - (R-3557L)
2-4	STREET IMPROVEMENT PLANS				

*AS-BUILT PER PLANS 6-02-03 LFH

PARK & RECREATION DEPARTMENT
APPROVED BY: *Robert J. [Signature]* DATE: 08/11/00
APPROVED FOR LANDSCAPE & IRRIGATION PLANS R-3557L & 3557I
ENGINEER IN RESPONSIBLE CHARGE
MICHAEL KATUSIAN
R.C.E. No. 35696 expires 6/30/04
DATE: 8/11/00

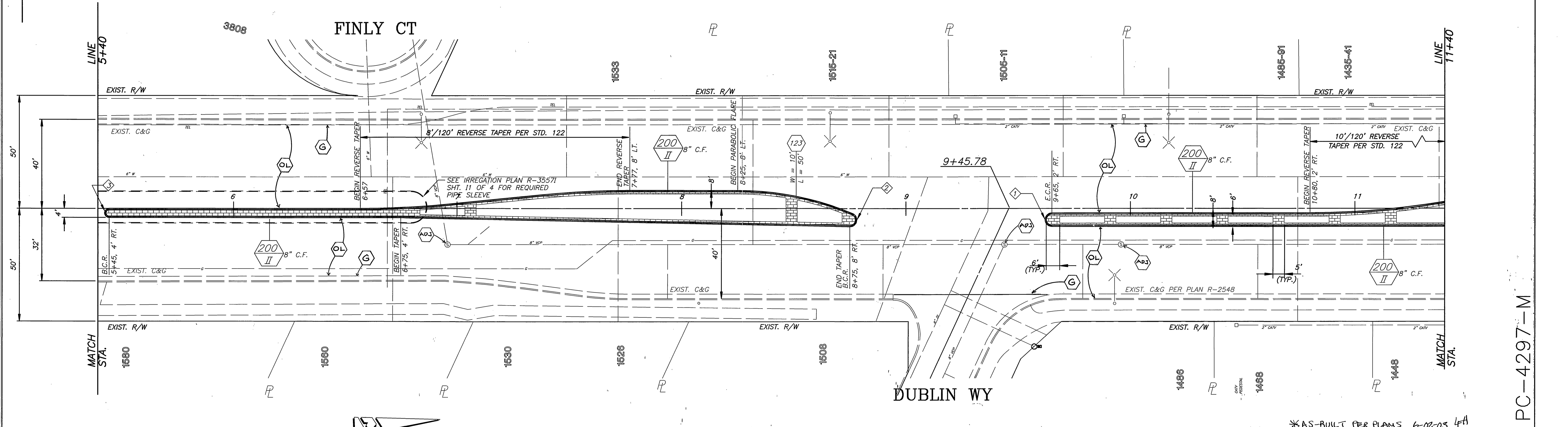
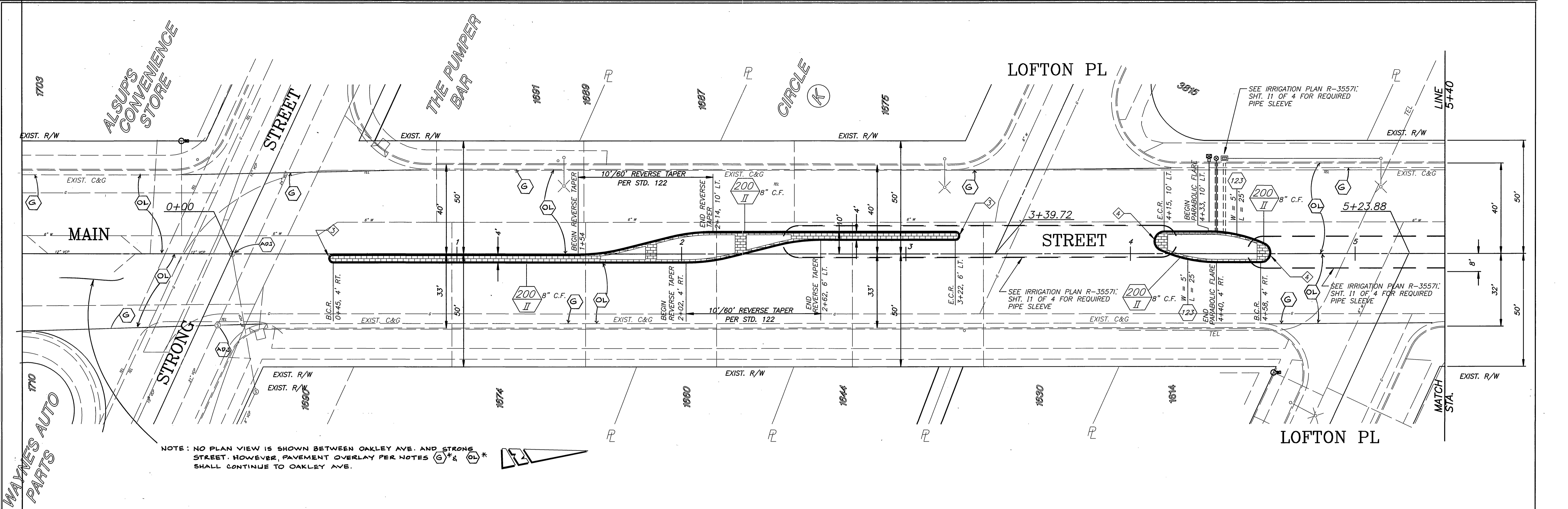
CITY OF RIVERSIDE, CALIFORNIA
PUBLIC WORKS DEPARTMENT
APPROVED BY: *[Signature]* DATE: 8-17-00
ENGINEERING MANAGER: *[Signature]*
PRINCIPAL ENGINEER: *[Signature]*
TRAFFIC DIVISION: *[Signature]*
SURVEYOR: *[Signature]*
STREET SERVICES: *[Signature]*
INSPECTION: *[Signature]*

MAIN STREET MEDIAN ISLANDS
FROM STRONG STREET TO 200' N'LY OF CARTER AVENUE
HORIZ. SCALE: VERT. SCALE:
FILE NO.

ACCOUNT NO.: 9538127152-440223XX
R-3557
SHEET 1 OF 4

INDEXED 1-17-2001 LFH

PC-4297-M



NOTE: NO PLAN VIEW IS SHOWN BETWEEN OAKLEY AVE. AND STRONG STREET. HOWEVER, PAVEMENT OVERLAY PER NOTES G* & OL* SHALL CONTINUE TO OAKLEY AVE.

CURVE DATA				
Δ	R	L	T	
1	180'00"00"	3'	9.42'	
2	158'11"55"	3'	8.28'	15.58'
3	180'00"00"	2'	6.28'	
4	158'11"55"	4.5'	12.43'	23.37'

ENGINEER IN RESPONSIBLE CHARGE
Michael Katusian
 MICHAEL KATUSIAN
 R.C.E. No. 36989 expires 6/30/04
 DATE 8/1/00



MARK	REVISIONS	APPR.	DATE

CITY OF RIVERSIDE, CALIFORNIA
 PUBLIC WORKS DEPARTMENT

APPROVED BY: *Richard McDratt*
 ENGINEERING MANAGER
 TRAFFIC DIVISION
 PUBLIC WORKS DIRECTOR

DESIGNED BY: CSS
 DRAWN BY: LFH
 CHECKED BY:

MAIN STREET MEDIAN ISLANDS
 FROM STRONG STREET TO 200' N'LY OF CARTER AVENUE

HORIZ. SCALE: 1" = 20'
 VERT. SCALE: 1" = 2'

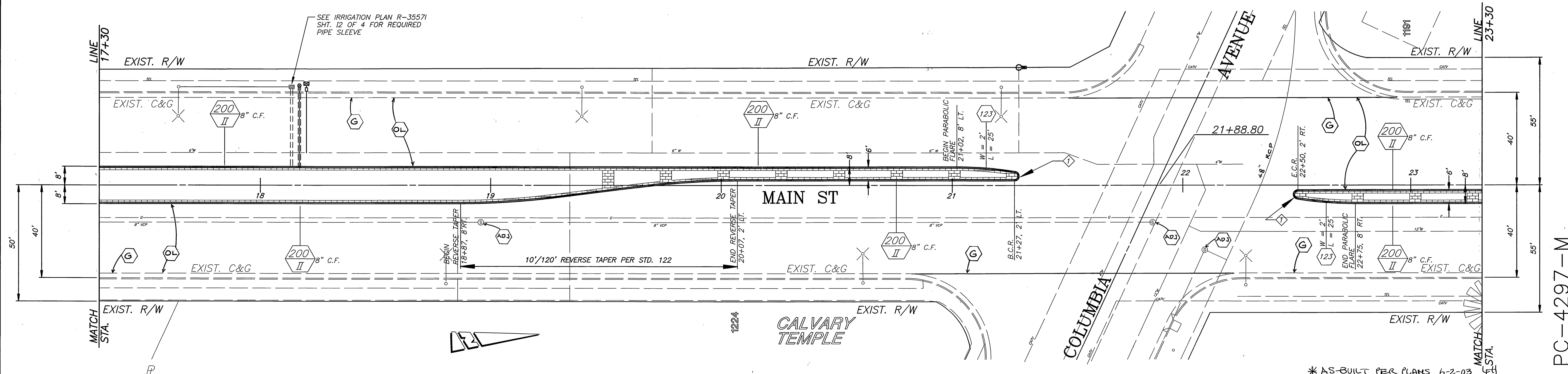
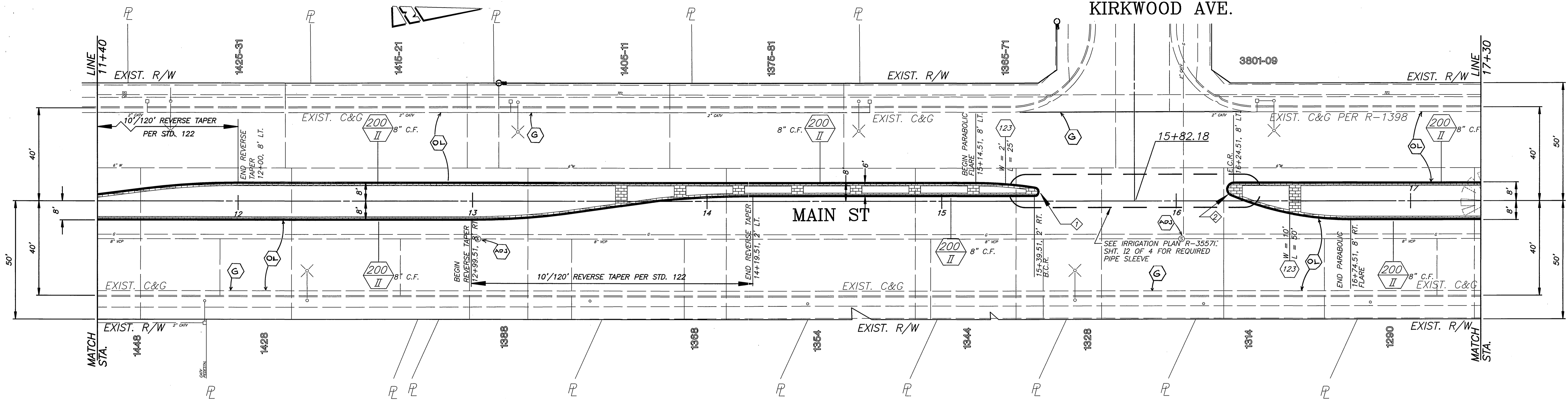
ACCT. NO.: 9538127152 - 440223XX
 R-3557
 SHEET 2 OF 4
 FILE NO.

*AS-BUILT PER PLANS 6-02-05 LFH

INDEXED 1-17-2001 LFH

PC-4297-M

KIRKWOOD AVE.



CURVE DATA				
Station	Angle	R	L	T
1	170° 54' 35"	2'	5.97'	25.16'
2	158° 11' 55"	3'	8.28'	15.58'

ENGINEER IN RESPONSIBLE CHARGE

Michael Katusian

MICHAEL KATUSIAN
R.C.E. No. 36686 expires 6/30/04
DATE 8/1/00

NO.	REVISIONS	APPR.	DATE

DESIGNED BY: CSS DRAWN BY: LFM CHECKED BY: [Signature]

CITY OF RIVERSIDE, CALIFORNIA
PUBLIC WORKS DEPARTMENT

APPROVED BY: [Signature] DATE: 8-17-00

INSPECTOR: [Signature]

* AS-BUILT PER PLANS 6-2-03

MAIN STREET MEDIAN ISLANDS

FROM STRONG STREET TO 200' N'LY OF CARTER AVENUE

HORIZ. SCALE: 1" = 20' VERT. SCALE: 1" = 2'

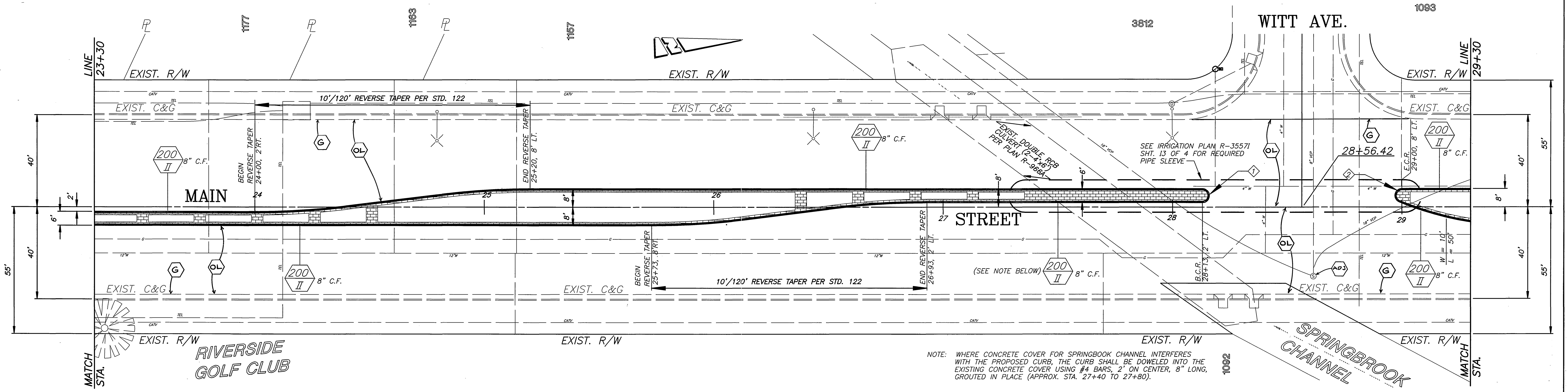
ACCT. NO. 9538127152 - 440223XX

R-3557

SHEET 3 OF 4

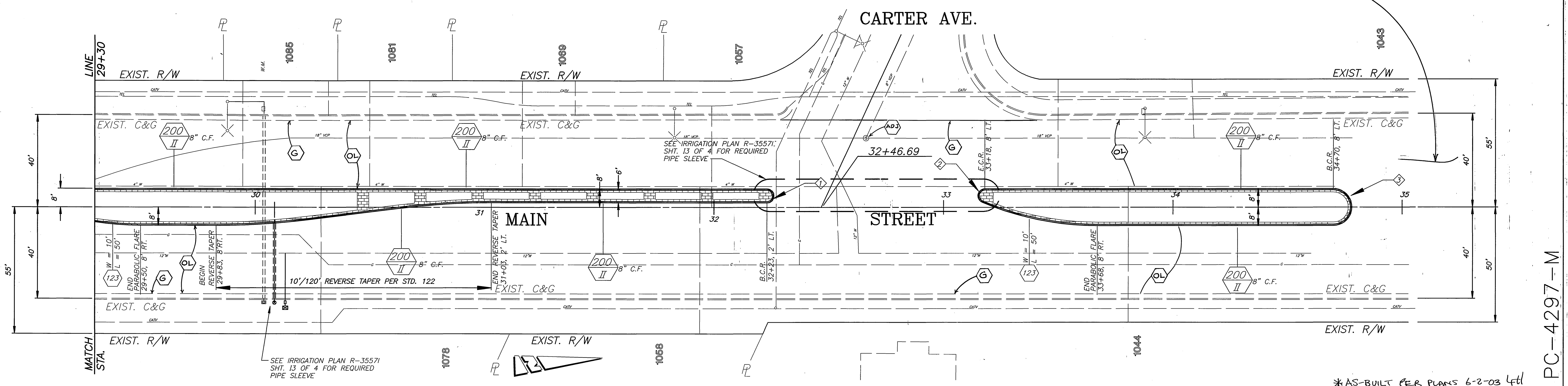
FILE NO.

PC-4297-M



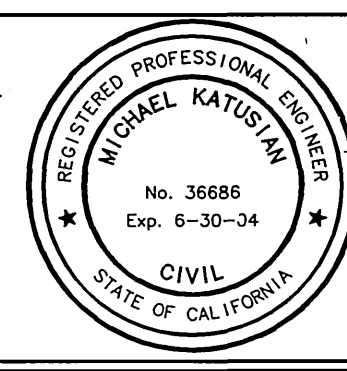
NOTE: WHERE CONCRETE COVER FOR SPRINGBROOK CHANNEL INTERFERES WITH THE PROPOSED CURB, THE CURB SHALL BE DOWELED INTO THE EXISTING CONCRETE COVER USING #4 BARS, 2' ON CENTER, 8" LONG, GROUTED IN PLACE (APPROX. STA. 27+40 TO 27+80).

NOTE: NO PLAN VIEW IS PROVIDED FOR THE AREA FROM 200± TO 400± N'LY OF CARTER AVE. HOWEVER, PAVEMENT OVERLAY PER NOTES (G) & (OL) SHALL CONTINUE TO 400± N'LY OF CARTER AVE.



CURVE DATA				
Δ	R	L	T	
1	180° 00' 00"	3'	9.42'	
2	158° 11' 55"	3'	8.28'	15.58'
3	180° 00' 00"	8'	25.13'	

ENGINEER IN RESPONSIBLE CHARGE
Michael Katusian
 MICHAEL KATUSIAN
 R.C.E. No. 36686 expires 6/30/04
 DATE 8/1/00



NO.	REVISIONS	APPR.	DATE

CITY OF RIVERSIDE, CALIFORNIA
 PUBLIC WORKS DEPARTMENT

APPROVED BY: [Signature]
 ENGINEERING MANAGER
 TRAFFIC DIVISION
 PUBLIC WORKS DIRECTOR

DATE: 8-17-00

*AS-BUILT PER PLANS 6-2-03 4th

MAIN STREET MEDIAN ISLANDS
 FROM STRONG STREET TO 200' N'LY OF CARTER AVENUE

HORIZ. SCALE: 1" = 20' VERT. SCALE: 1" = 2'

ACCT. NO. 9538127152-440223XX
R-3557
 SHEET 4 OF 4
 FILE NO.

PC-4297-M