

# RIVERSIDE CITY OF RIVERSIDE CALIFORNIA

## PUBLIC WORKS DEPARTMENT 14TH ST./MARTIN LUTHER KING BLVD. STREET IMPROVEMENTS BERMUDA TO ANGELO

### GENERAL CONSTRUCTION NOTES:

- CONSTRUCTION SHALL BE IN ACCORDANCE WITH THE CITY OF RIVERSIDE STANDARD DRAWINGS AND STANDARD SPECIFICATIONS FOR PUBLIC WORKS CONSTRUCTION, 1997 EDITION.
- ALL ELEVATIONS SHOWN ON THE PLANS SHALL BE STAKED IN THE FIELD, EXCEPT FOR ELEVATIONS SHOWN IN PARENTHESIS WHICH DENOTE EXISTING GRADES.
- CUT AND FILL SLOPES SHALL BE 2:1 OR FLATTER UNLESS OTHERWISE SHOWN ON THE PLAN.
- EXISTING UTILITIES SHOWN ON THE PLANS ARE PLOTTED FROM UTILITY RECORDS. THE CONTRACTOR IS REQUIRED TO TAKE DUE PRECAUTIONARY MEASURES TO LOCATE AND PROTECT ALL UTILITIES WHETHER OR NOT SHOWN ON THESE PLANS.

### CONSTRUCTION LEGEND:

- NUMBERS ABOVE 100 IN A HEXAGON ON THE PLAN REFER TO THE RESPECTIVE STANDARD DRAWING AND SHALL BE CONSTRUCTED ACCORDINGLY UNLESS MODIFICATIONS ARE NOTED ON THE PLAN. ANY NUMBER SHOWN BELOW THE STANDARD DRAWING NUMBER INDICATES THE SPECIFIC ALTERNATE TO BE CONSTRUCTED. DRIVEWAY APPROACH PER STD. 302, TYPE CURB-I.
- WHEELCHAIR RAMP
- REMOVE TREE AS SHOWN ON THE PLANS. CASS 1 - 6" TO 18".
- CONSTRUCT STRUCTURAL SECTION OF 0.50' AC OVER 1.50' CAB. (MARTIN LUTHER KING)
- CONSTRUCT STRUCTURAL SECTION OF 0.33' AC OVER 1.17' CAB. (SEDGWICK, PENNSYLVANIA & KANSAS)
- CONSTRUCT STRUCTURAL SECTION OF 0.21' AC OVER 0.75' CAB. (GEORGIA)
- OVERLAY EXISTING PAVEMENT WITH VARIABLE THICKNESS A.C. (0.10' MIN.)
- ADJUST GATE VALVE COVER TO GRADE.
- PUD, ELECTRIC DIV. TO RELOCATE PRIOR TO CONSTRUCTION.
- ADJUST SEWER OR STORM DRAIN MANHOLE COVER TO GRADE.
- PACIFIC BELL TO RELOCATE OR ADJUST TO GRADE.
- PUD, WATER DIV. TO RELOCATE/EXTEND.
- SO. CALIF. GAS CO. TO ADJUST TO GRADE.
- FIRE HYDRANT TO BE INSTALLED BY P.U. WATER DIVISION.
- PRIOR TO CONSTRUCTION OF ASPHALT OVERLAY ADJACENT TO THE EXISTING GUTTER LIP OR A JOIN LINE, COLD-MILL THE EXISTING PAVEMENT WITHIN (5' FOR (C1) OR 10' FOR (C2)) OF THE GUTTER LIP OR JOIN LINE. THE DEPTH OF COLD MILLING SHALL BE 0.10" BELOW THE GUTTER LIP AND CARRIED OUT UNIFORMLY.

### SPECIFIC CONSTRUCTION NOTES:

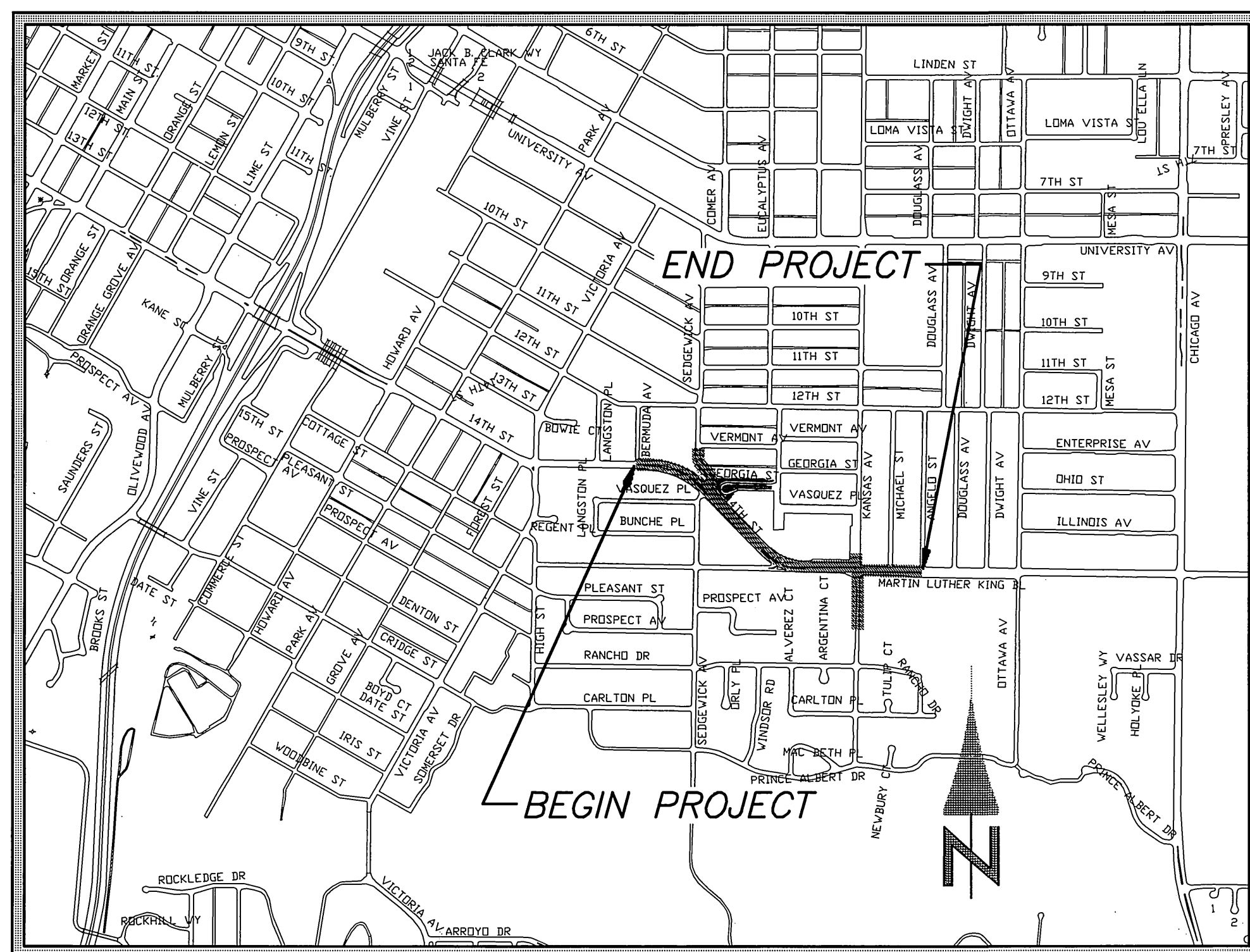
- EXISTING STORM DRAIN STRUCTURE TO BE REMOVED.
- REMOVE AND SALVAGE EXISTING STREET SIGN.
- REMOVE EXISTING CURB AND GUTTER AND/OR AC BERM.
- REGRADE EXISTING DIRT DRIVEWAY.
- INSTALL 1 TON LANDSCAPE BOULDERS.
- REMOVE EXISTING MEDIAN.
- POWER POLE & GUY ANCHOR TO BE RELOCATED BY PUBLIC UTILITIES ELECTRIC DIVISION PRIOR TO CONSTRUCTION.
- SEE MEDIAN ISLAND LANDSCAPE PLAN R-3571-L.
- CONSTRUCT VARIABLE HEIGHT PCC CURB AT BACK OF SIDEWALK.
- REMOVE PORTION OF CHAIN LINK FENCE, WIRE FENCE OR WOOD FENCE THAT INTERFERES WITH CONSTRUCTION AND TERMINATE WITH A NEW POST BEHIND R/W. CONTRACTOR SHALL REMOVE AND REPLACE FENCE TO MATCH EXISTING.
- OVEREXCAVATION AND COMPACTION SHALL BE WITHIN AREAS SHOWN ON SHEET 11A.
- CONSTRUCT 5' HIGH RETAINING WALL TO PROTECT EXISTING WATER FACILITIES PER STD. DWG 707.
- TRANSPLANT EXISTING PALM TREES ON SITE AS DIRECTED BY THE PUBLIC WORKS INSPECTOR AND AS DESCRIBED IN THE ACCOMPANYING SPECIAL PROVISIONS FOR LOCATION SEE PLAN R-3571-L SHEET 2.
- CONSTRUCT 3-1/2" THICK STAMPED CONCRETE. COLOR SHALL BE ADOBE TAN, C-21. USE 12" X 12" TILE PATTERN OR CITY APPROVED EQUAL.
- 1-1/2" LANDSCAPING WATER METER TO BE INSTALLED BY PUBLIC UTILITIES DEPARTMENT, WATER DIVISION.

### EXISTING UNDERGROUND UTILITIES:

SANITARY SEWER	8" S	TELEPHONE CONDUIT	T
WATER LINE	6" W	ELECTRICAL CONDUIT	E
STORM DRAIN	24" SD	ELECTROLIER LIGHTING CONDUIT	ELC
GAS LINE	3" G	TRAFFIC SIGNAL	SIG
ABANDONED UTILITY	6" G (ABAN'D.)	FIRE ALARM	F

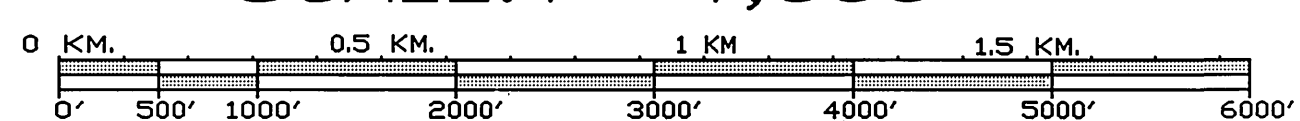
### EXISTING TOPOGRAPHY:

- BLOCK WALL
- BOARD FENCE
- WIRE FENCE
- CHAIN LINK FENCE
- SANITARY SEWER M.H.
- SANITARY SEWER CLEANOUT
- STORM DRAIN M.H.
- IRRIGATION WEIR
- WATER M.H.
- GAS M.H.
- ELECTRIC M.H.
- TELEPHONE M.H.
- WATER METER
- FIRE HYDRANT
- SPRINKLER HEAD
- VALVE
- AIR VALVE
- AIR VENT
- BUS STOP SIGN
- BLOW-OFF VALVE
- IRRIGATION STAND PIPE
- CONCRETE
- ASPHALT
- BUILDING
- EDGE OF PAVEMENT
- POLE & GUY ANCHOR
- POWER POLE
- TELEPHONE POLE
- TELEPHONE RISER
- JOINT USE POLE
- PULL BOX
- TRAFFIC SIGN
- PARKING METER
- FIRE ALARM BOX
- STREET NAME SIGN
- GAS METER
- MAIL BOX
- FAUCET
- WALK-DON'T WALK PEDESTRIAN SIGNAL
- ELECTRICAL TEST STATION
- WHEEL STOP
- A.C. BERM
- PEDESTRIAN PUSH BUTTON
- RAILROAD TRACKS
- RAILROAD SIGN
- RAILROAD SIGNAL
- TRAFFIC SIGNAL
- TRAFFIC SIGNAL ON MAST ARM
- TRAFFIC SIGNAL CONTROLLER
- TRAFFIC SIGNAL PRESSURE DETECTOR
- TRAFFIC SIGNAL LOOP DETECTOR
- STREET LIGHT & TRAFFIC SIGNAL ON MAST ARM
- STREET LIGHT (UPRIGHT)
- STREET LIGHT ON MAST ARM
- STEEL POST
- WOOD POST



### PROJECT LOCATION MAP

SCALE: 1" = 1,000'



### STRUCTURAL SECTION TABLE

SYMBOL	STREET	T.I.	R-VALUE	A.C.	BASE
C 31	14th St./MLK Blvd.	9	15	0.32'	1.75'
C 32	Sedgwick Ave.	6	15	0.21'	1.00'
C 32	Pennsylvania Ave.	6	15	0.21'	1.00'
C 32	Kansas Ave.	6	15	0.21'	1.00'
C 33	Georgia St.	5	15	0.21'	0.75'

R BASE (MIN.) = 80

### SHEET INDEX:

#### STREET PLANS (R-3571)

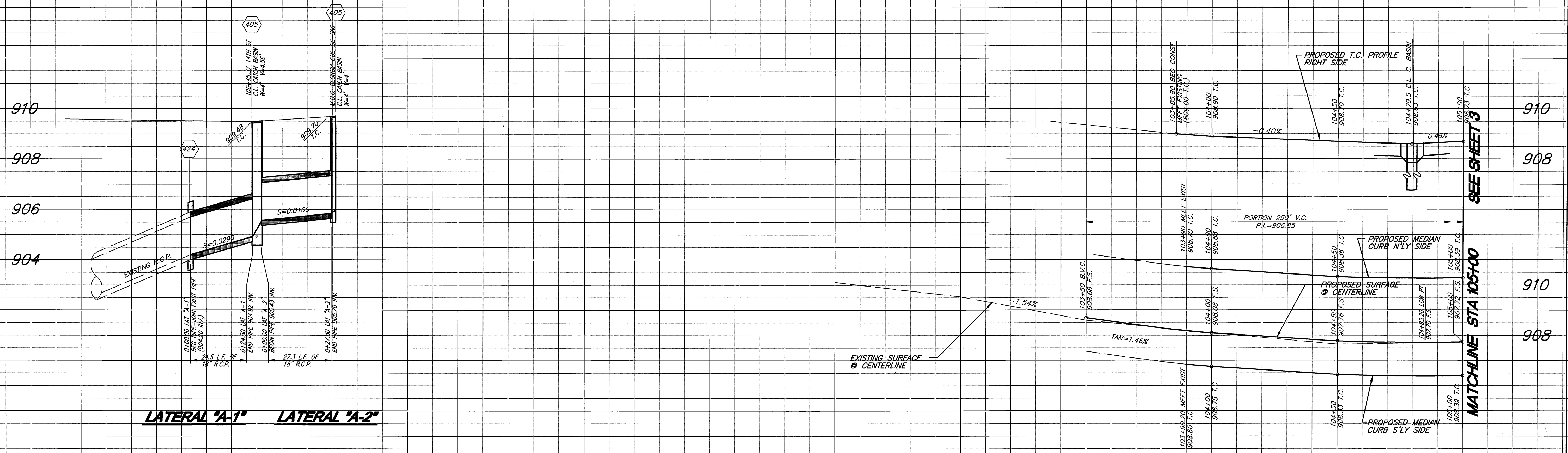
SHEET NO.	DESCRIPTION
1	TITLE SHEET
2-6	14TH ST./MLK BLVD. STREET IMPROVEMENT PLANS
7	KANSAS AVE. STREET IMPROVEMENT PLAN
8	PENNSYLVANIA AVE. STREET IMPROVEMENT PLAN
9	SEDGWICK AVE. STREET IMPROVEMENT PLAN
10	GEORGIA ST. STREET IMPROVEMENT PLAN
8	STORM DRAIN LATERAL PROFILES
11	TYPICAL STREET SECTIONS
11A	OVEREXCAVATION AREAS
R-3571-L	MEDIAN ISLAND IRRIGATION & LANDSCAPING PLANS

#### TRAFFIC PLANS

SHEET NO.	DESCRIPTION
1	SIGNAL AT MLK AND KANSAS (X-452A)
2	SIGNAL AT 14th ST AND SEDGWICK (X-151A)

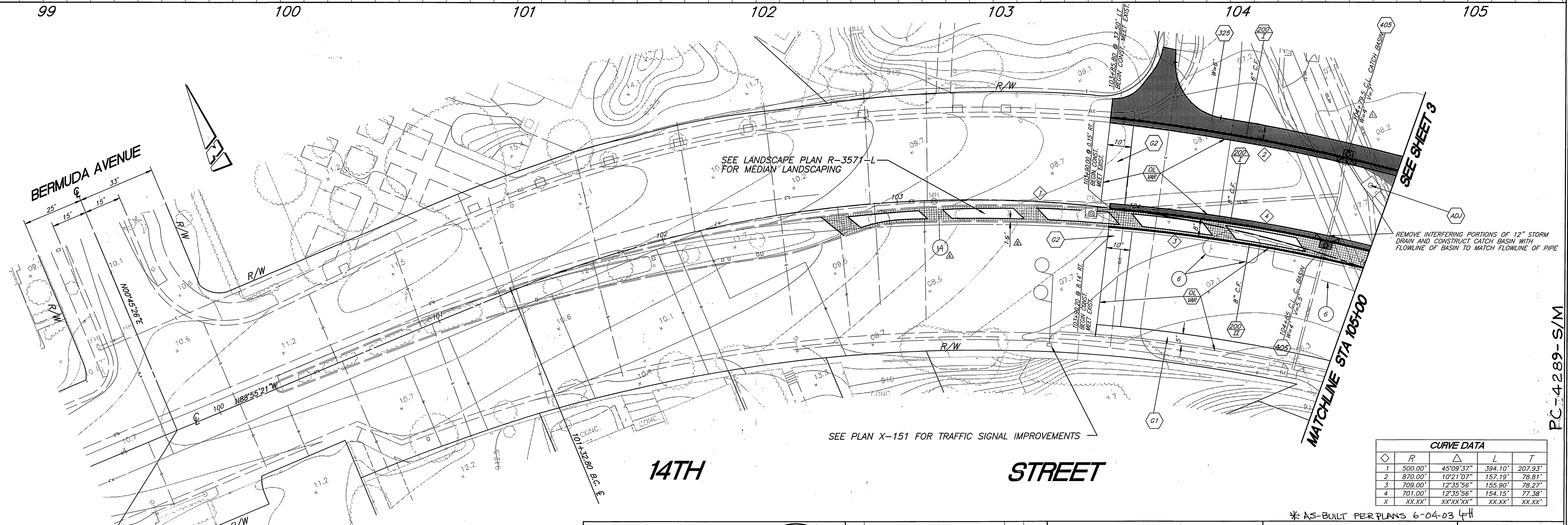
\*AS-BUILT PER PLANS 6-04-03 4H

PARK & RECREATION DEPARTMENT APPROVED BY _____ DATE _____ APPROVED FOR LANDSCAPE & IRRIGATION PLANS R-3571L & R-3571I		ENGINEER IN RESPONSIBLE CHARGE Ronald C. Mueller R.C.E. No. 29510 expires 3/31/03 DATE 5-25-00	CITY OF RIVERSIDE, CALIFORNIA PUBLIC WORKS DEPARTMENT APPROVED BY _____ DATE _____ ENGINEERING MANAGER _____ PRINCIPAL ENGINEER _____ TRAFFIC DIVISION _____ SURVEYOR _____ STREET SERVICES _____ INSPECTION _____	14TH ST./MARTIN LUTHER KING BLVD. STREET IMPROVEMENTS BERMUDA TO ANGELO HORIZ. SCALE: _____ VERT. SCALE: _____	ACC# NO.: 9535327152-44022309 <b>R-3571</b> SHEET 1 OF 11 FILE NO. _____
					DESIGNED BY _____ DRAWN BY _____ SK _____ CHECKED BY _____ MARK _____ REVISIONS _____ APPR. DATE _____ INDEXED 6/20/2000 4H



**LATERAL "A-1" LATERAL "A-2"**

99 100 101 102 103 104 105

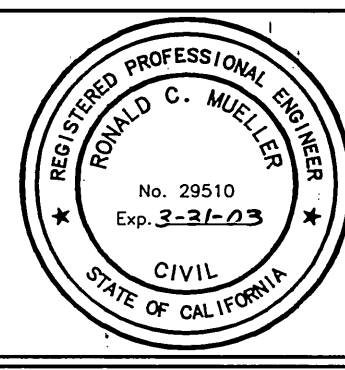


CURVE DATA				
Station	R	Δ	L	T
1	500.00'	45°09'37"	394.10'	207.93'
2	870.00'	10°21'07"	157.19'	78.81'
3	709.00'	12°35'56"	155.90'	78.27'
4	701.00'	12°35'56"	154.15'	77.38'
X	XX.XX'	XX°XX'XX"	XX.XX'	XX.XX'

\* AS-BUILT PER PLANS 6-04-03 L/H

99+80.25 14TH ST  
C.L. INT. BERMUDA AVE

ENGINEER IN RESPONSIBLE CHARGE  
**Ronald C. Mueller**  
RONALD C. MUELLER  
R.C.E. No. 29510 expires 3/31/03  
DATE 5-25-00



DESIGNED BY CURT DRAWN BY CHECKED BY RMM

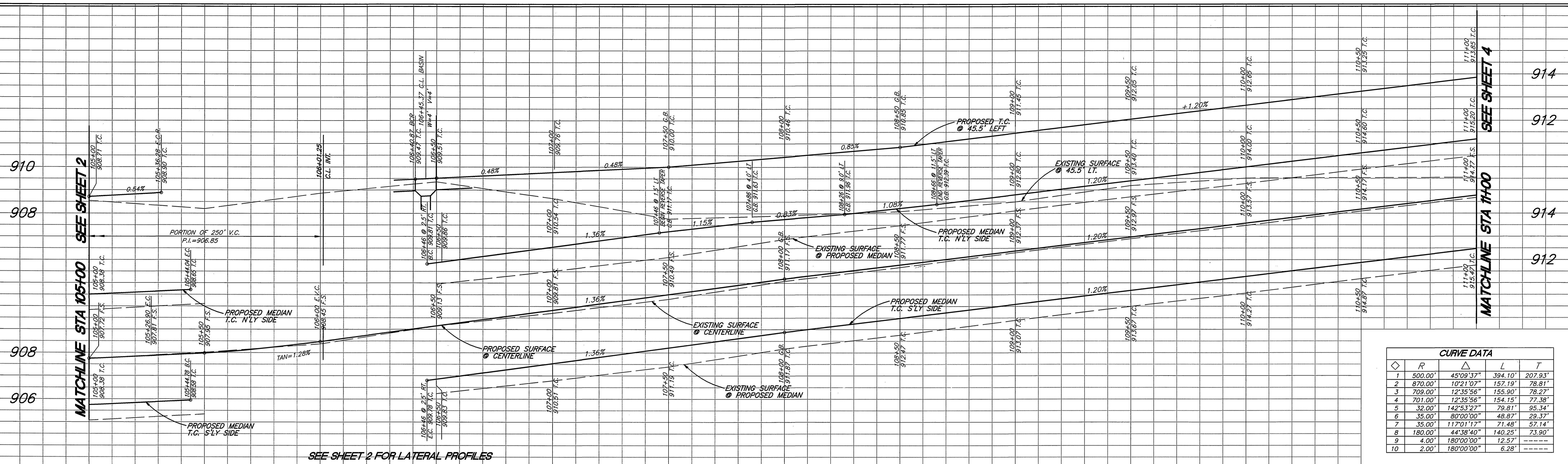
CITY OF RIVERSIDE, CALIFORNIA  
PUBLIC WORKS DEPARTMENT  
APPROVED BY **R. Mc Grath**  
PUBLIC WORKS DIRECTOR  
DATE 5-26-2000

**14TH ST / MARTIN LUTHER KING BLVD**  
**STREET IMPROVEMENTS**  
BERMUDA TO ANGELO  
HORIZ. SCALE: 1" = 20' VERT. SCALE: 1" = 2'

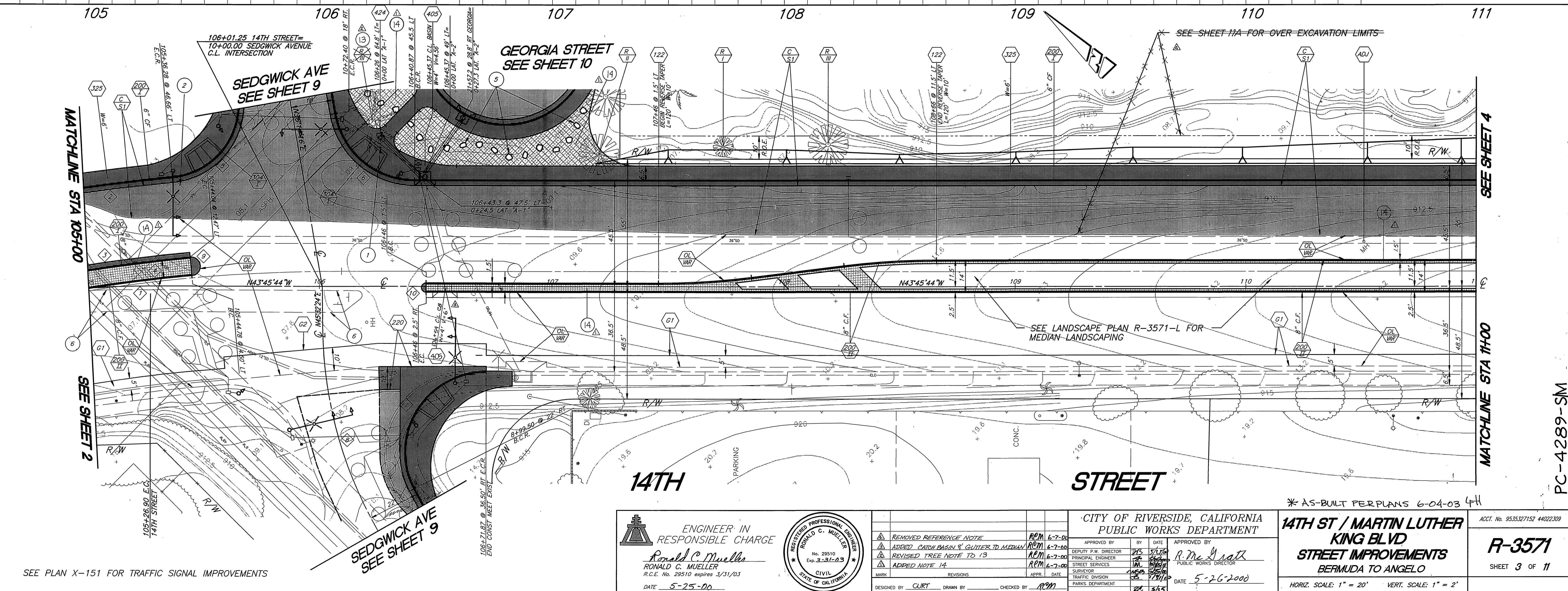
ACCT. No. 9535327152 44022309  
**R-3571**  
SHEET 2 OF 11

PC-4289-S/M

INDEXED 6/20/2000 L/H

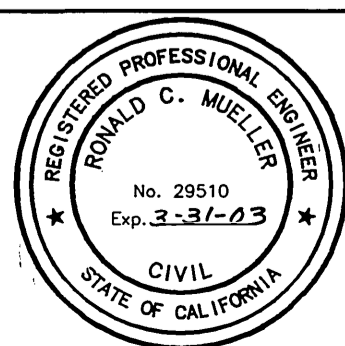


SEE SHEET 2 FOR LATERAL PROFILES



SEE PLAN X-151 FOR TRAFFIC SIGNAL IMPROVEMENTS

ENGINEER IN RESPONSIBLE CHARGE  
**Ronald C. Mueller**  
 RONALD C. MUELLER  
 R.C.E. No. 29510 expires 3/31/03  
 DATE 5-25-00



REVISION	DATE	BY	CHECKED BY
REMOVED REFERENCE NOTE	6-7-00	REM	
ADDED CATCH BASIN & GUTTER TO MEDIAN	6-7-00	REM	
REVISED TREE NOTE TO 13	6-7-00	REM	
ADDED NOTE 14	6-7-00	REM	

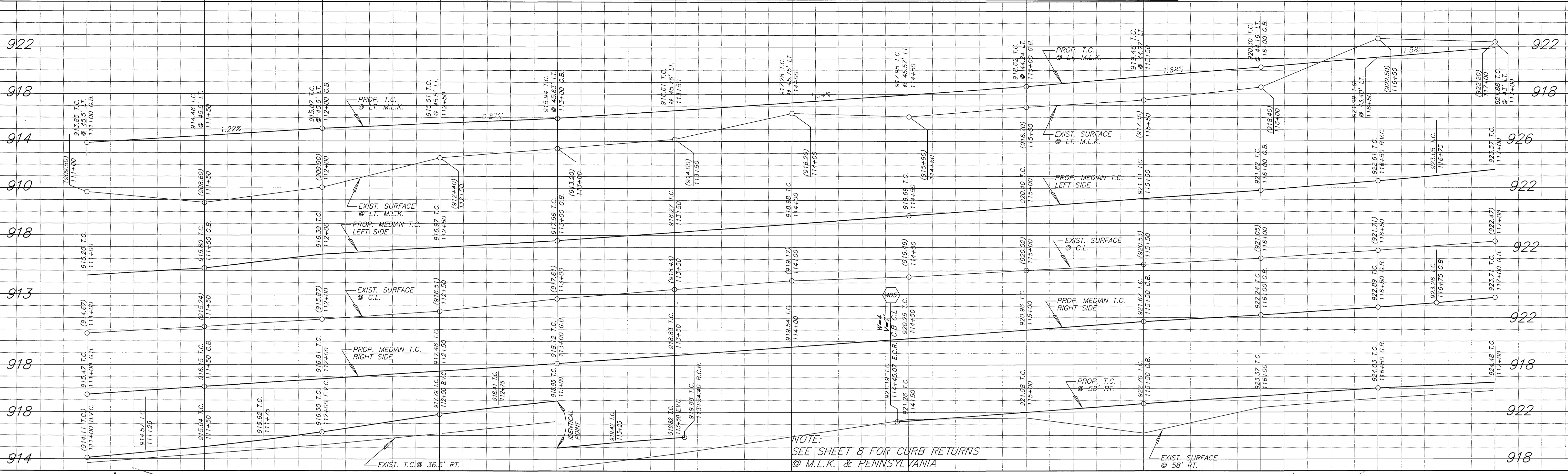
CITY OF RIVERSIDE, CALIFORNIA  
 PUBLIC WORKS DEPARTMENT  
 APPROVED BY: **R. Mueller**  
 DEPUTY P.W. DIRECTOR  
 DATE: 5-26-2000  
 DESIGNED BY: CURT  
 DRAWN BY: [blank]  
 CHECKED BY: REM

\* AS-BUILT PER PLANS 6-04-03 LH  
**14TH ST / MARTIN LUTHER KING BLVD**  
**STREET IMPROVEMENTS**  
 BERMUDA TO ANGELO  
 HORIZ. SCALE: 1" = 20'  
 VERT. SCALE: 1" = 2'

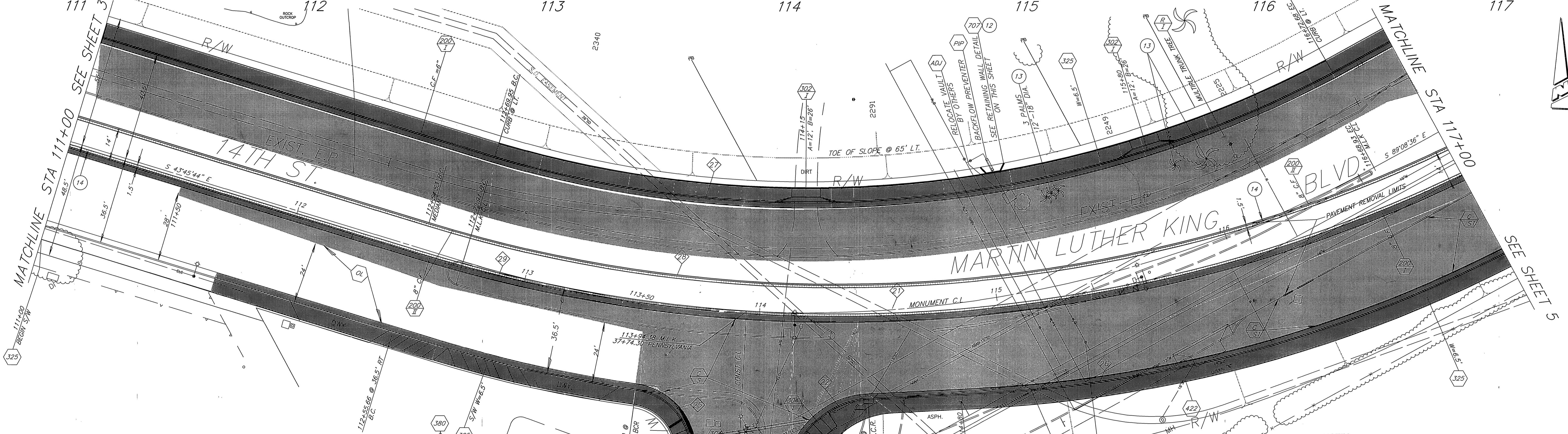
ACC'T. No. 9535327152 #4022309  
**R-3571**  
 SHEET 3 OF 11

INDEXED 6/20/2000

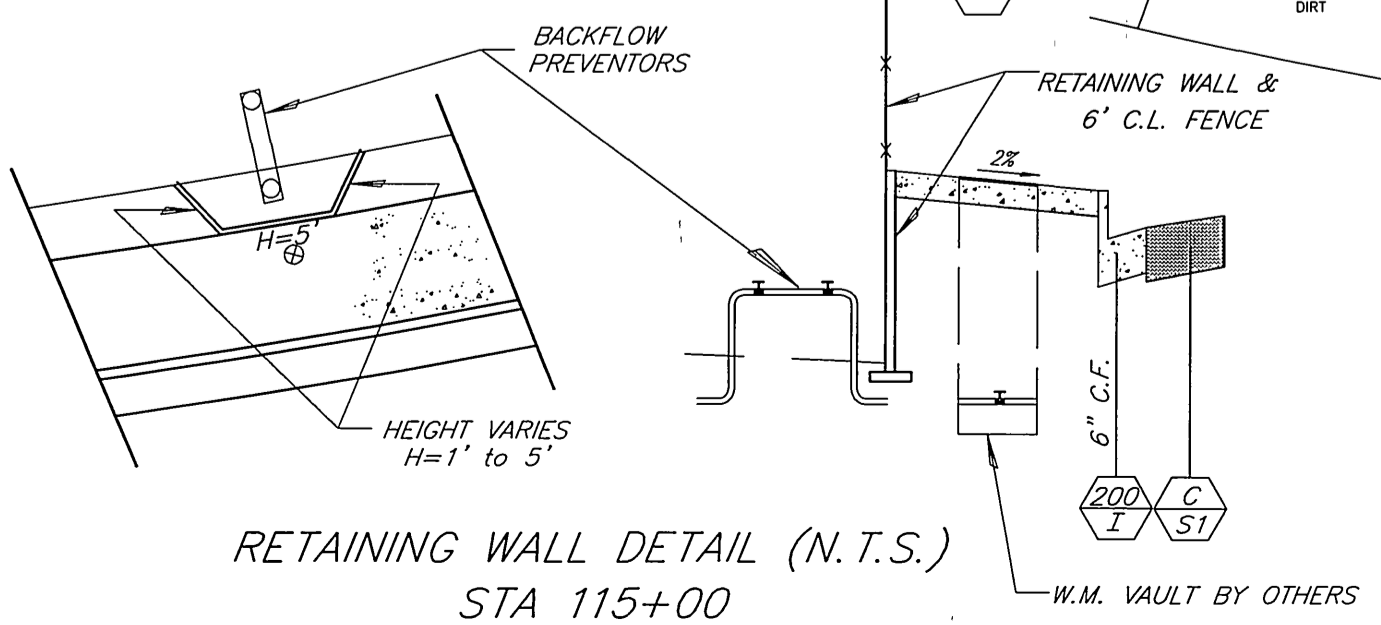
PC-4289-SM



NOTE:  
SEE SHEET 8 FOR CURB RETURNS  
@ M.L.K. & PENNSYLVANIA



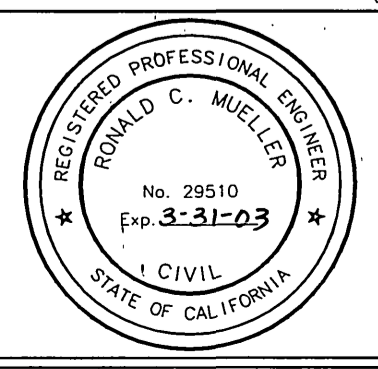
CURVE DATA				
Station	Δ	R	L	T
21	45° 22' 51"	500'	396.02'	209.02'
22	79° 56' 44"	35'	48.84'	29.34'
23	45° 22' 51"	67'	64.68'	35.11'
24	55° 51' 23"	45'	43.87'	23.85'
25	143° 50' 52"	27'	67.79'	82.72'
26	25° 45' 49"	550'	247.31'	125.78'
27	45° 22' 51"	470'	372.26'	196.51'
28	45° 22' 52"	598'	473.65'	250.03'
29	45° 22' 52"	612'	484.73'	255.89'
30	90° 01' 49"	35'	55'	35.02'
31	89° 59' 15"	35'	54.97'	34.99'
32	89° 59' 15"	20'	31.41'	20'



NOTES:  
UTILITY POLES AND WATER METER VAULT TO BE RELOCATED BY OTHERS.  
REMOVE EXISTING 12" RCP FOR LATERAL B CONSTRUCTION.

\* AS-BUILT PER PLANS 6-04-03 LKH

ENGINEER IN RESPONSIBLE CHARGE  
**Ronald C. Mueller**  
RONALD C. MUELLER  
R.C.E. No. 29510 expires 3/31/03  
DATE 6-7-2000



CITY OF RIVERSIDE, CALIFORNIA  
PUBLIC WORKS DEPARTMENT  
APPROVED BY: **R. McSwath**  
DEPUTY P.W. DIRECTOR  
DATE: 6-8-2000

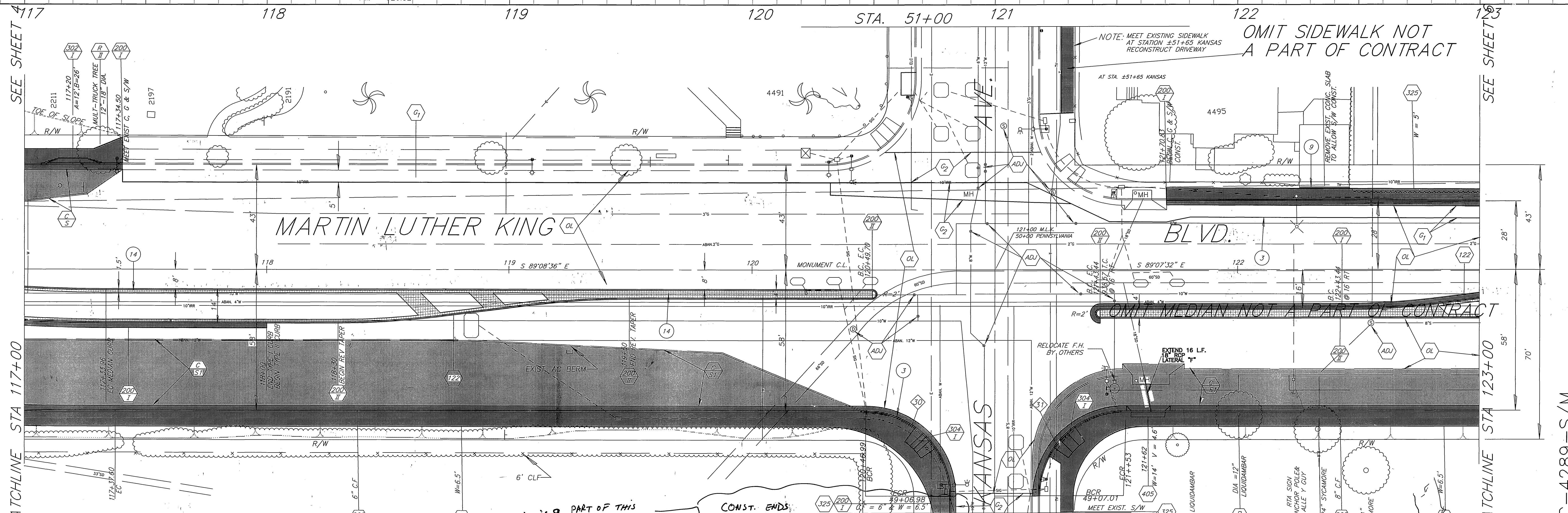
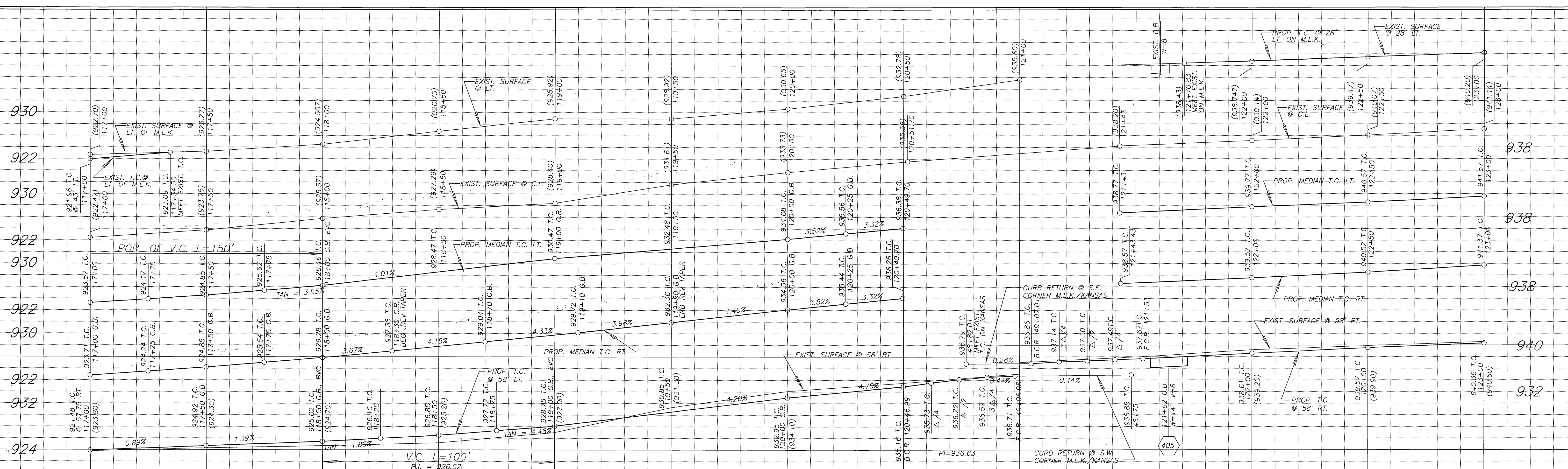
14TH ST / MARTIN LUTHER KING BLVD  
STREET IMPROVEMENTS  
BERMUDA TO ANGELO

ACCT. No. 9535327152 44022309  
**R-3571**  
SHEET 4 OF 11

HORIZ. SCALE: 1" = 20' VERT. SCALE: 1" = 4'

INDEXED 6/20/2000 LKH

PC-4289-S/M



CURVE DATA				
Station	Angle	R	L	T
30	90° 01' 49"	35'	55'	35.02'
31	89° 59' 15"	35'	54.97'	34.99'

Note → This only is a part of this project

ENGINEER IN RESPONSIBLE CHARGE  
**Ronald C. Mueller**  
 R.C.E. No. 29510 expires 3/31/03  
 DATE 6-7-2000

CITY OF RIVERSIDE, CALIFORNIA  
 PUBLIC WORKS DEPARTMENT

APPROVED BY: **R. M. Slatk**  
 DEPUTY P.W. DIRECTOR

DATE: 6-8-2000

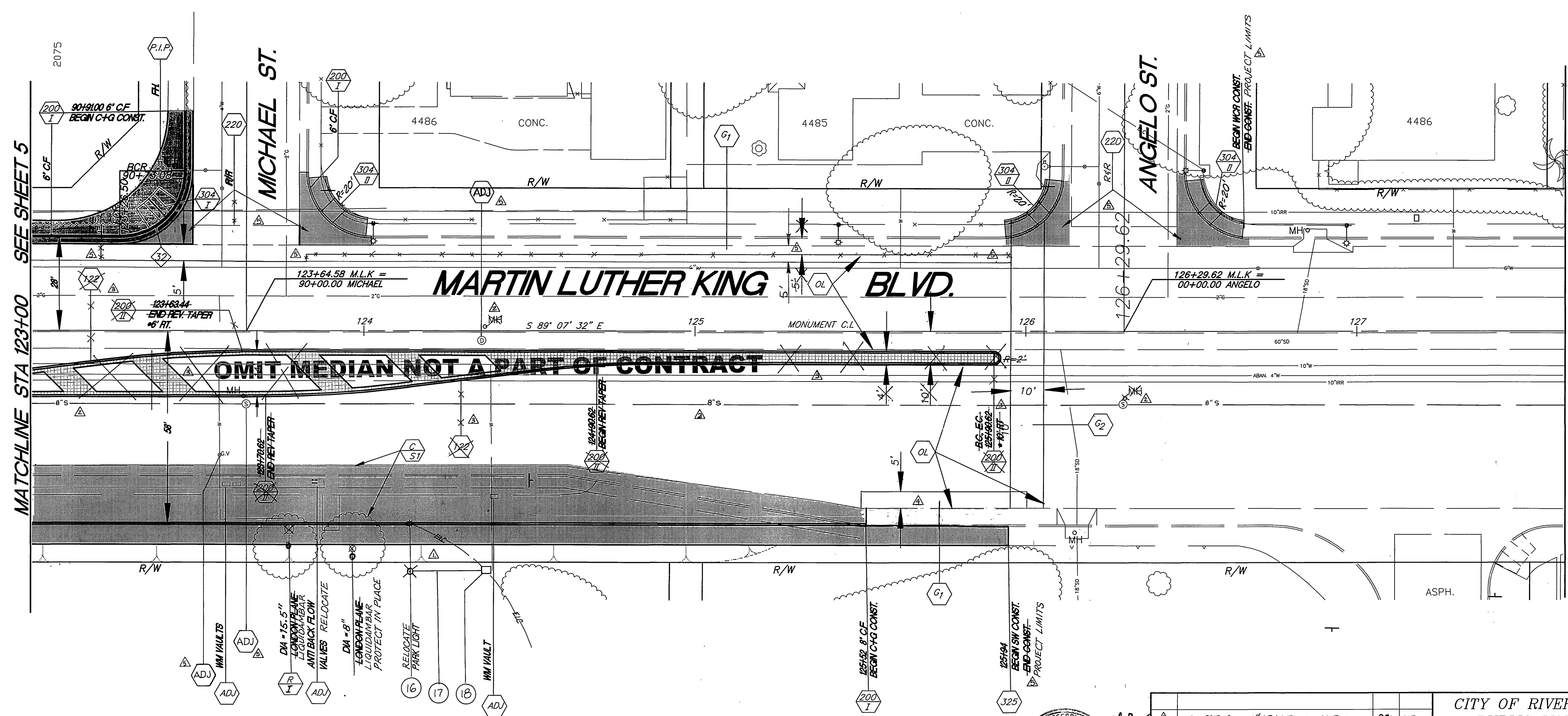
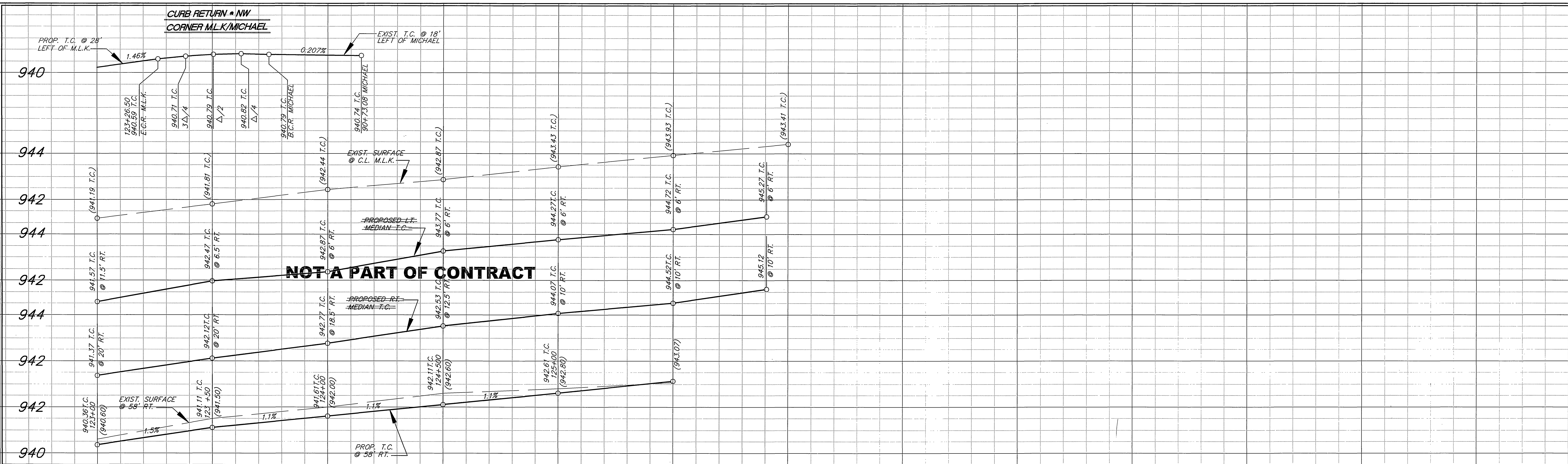
DESIGNED BY: APE  
 DRAWN BY: [blank]  
 CHECKED BY: [blank]

14TH ST / MARTIN LUTHER KING BLVD  
 STREET IMPROVEMENTS  
 BERMDA TO ANGELO

ACCT. No. 9535327152 44022309  
**R-3571**  
 SHEET 5 OF 11

HORIZ. SCALE: 1" = 20'  
 VERT. SCALE: 1" = 8'

INDEXED 6/24/2000 44



CURVE DATA				
Station	Angle	R	L	T
30	90° 01' 49"	35'	55'	35.02'
32	89° 59' 15"	20'	31.41'	20'

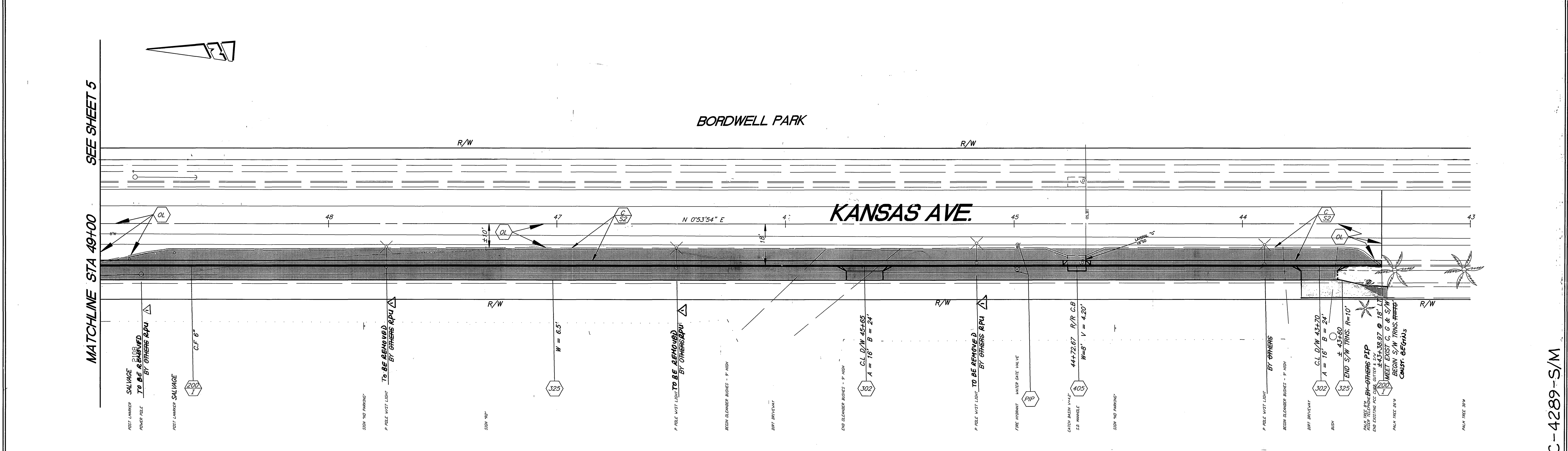
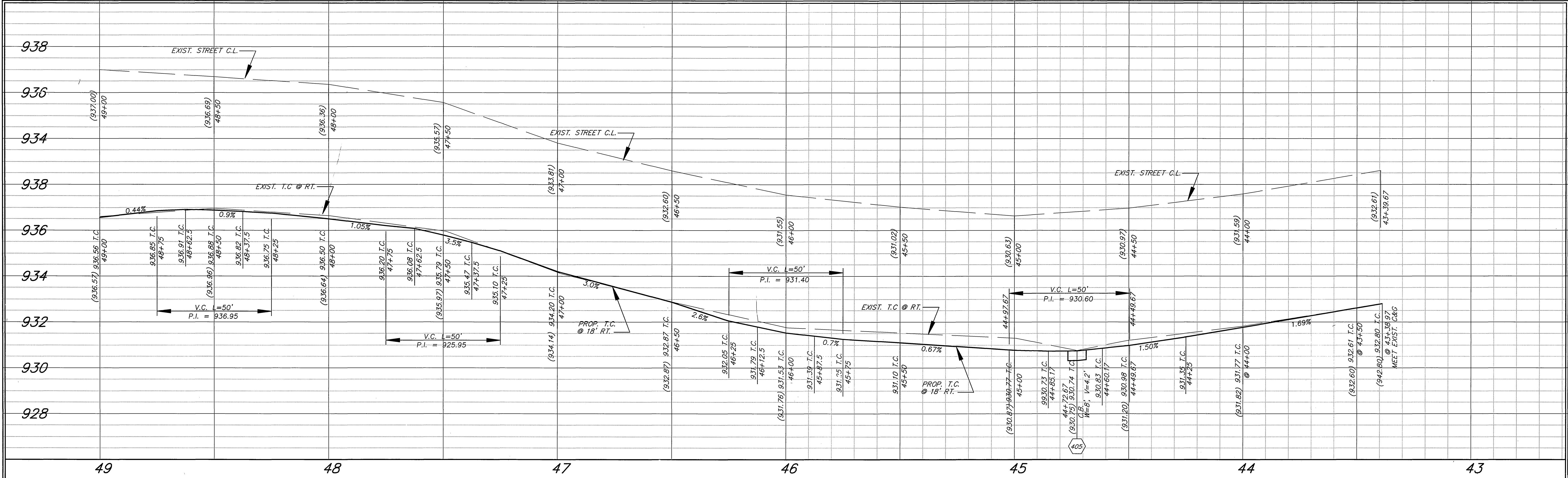
**SPECIFIC CONSTRUCTION NOTES:**

- (16) RELOCATE EXISTING LIGHT STANDARD ONTO NEW CONCRETE FOUNDATION CONSTRUCTED TO MATCH EXISTING.
- (17) INSTALL 1" SCHEDULE 40 CONDUIT WITH 2-#8 CU AND 1 #1 GREEN WIRE.
- (18) INTERCEPT EXISTING CONDUIT AND CABLES AND EXTEND TO PULLBOX (10"x17"x12"). PER ITEM #P-1 OF UGS-800. INSTALL PER UGS-320.

\* AS-BUILT PER PLANS 6-04-03 LFH

CITY OF RIVERSIDE, CALIFORNIA PUBLIC WORKS DEPARTMENT		<b>14TH ST / MARTIN LUTHER KING BLVD STREET IMPROVEMENTS BERMUDA TO ANGELO</b>		ACCT. No. 9535327152 44022309
DESIGNED BY: <i>ADP</i> DRAWN BY: <i>ADP/LH</i> CHECKED BY: <i>RCM</i>	APPROVED BY: <i>R.McBeath</i> DEPUTY P.W. DIRECTOR PUBLIC WORKS DIRECTOR	DATE: 5-26-2000	SHEET 6 OF 11	<b>R-3571</b>
HORIZ. SCALE: 1" = 20' VERT. SCALE: 1" = 2'		INDEXED 6/20/2000 LFH		

PC-4289-S/M



**NOTE:**  
 EXIST. POWER POLES TO BE REMOVED BY THE CITY OF RIVERSIDE PUBLIC UTILITIES DEPT. (RPU) PRIOR TO START OF CONSTRUCTION.  
 NEW STREET LIGHT POLES TO BE CONSTRUCTED BY CONTRACTOR AS PART OF THIS PROJECT PER ATTACHED PLAN # 060115-11

COUNTY OF RIVERSIDE FLOOD CONTROL BASIN

ENGINEER IN RESPONSIBLE CHARGE  
**Ronald C. Mueller**  
 R.C.E. No. 29510 expires 3/31/03  
 DATE 5-25-00

DESIGNED BY	APR	DRN	APR/DAN	CHECKED BY	ROM
DATE	5-25-00				

CITY OF RIVERSIDE, CALIFORNIA  
 PUBLIC WORKS DEPARTMENT

APPROVED BY: **R. Mc Gratz**  
 DEPUTY P.W. DIRECTOR  
 DATE: 5-26-00

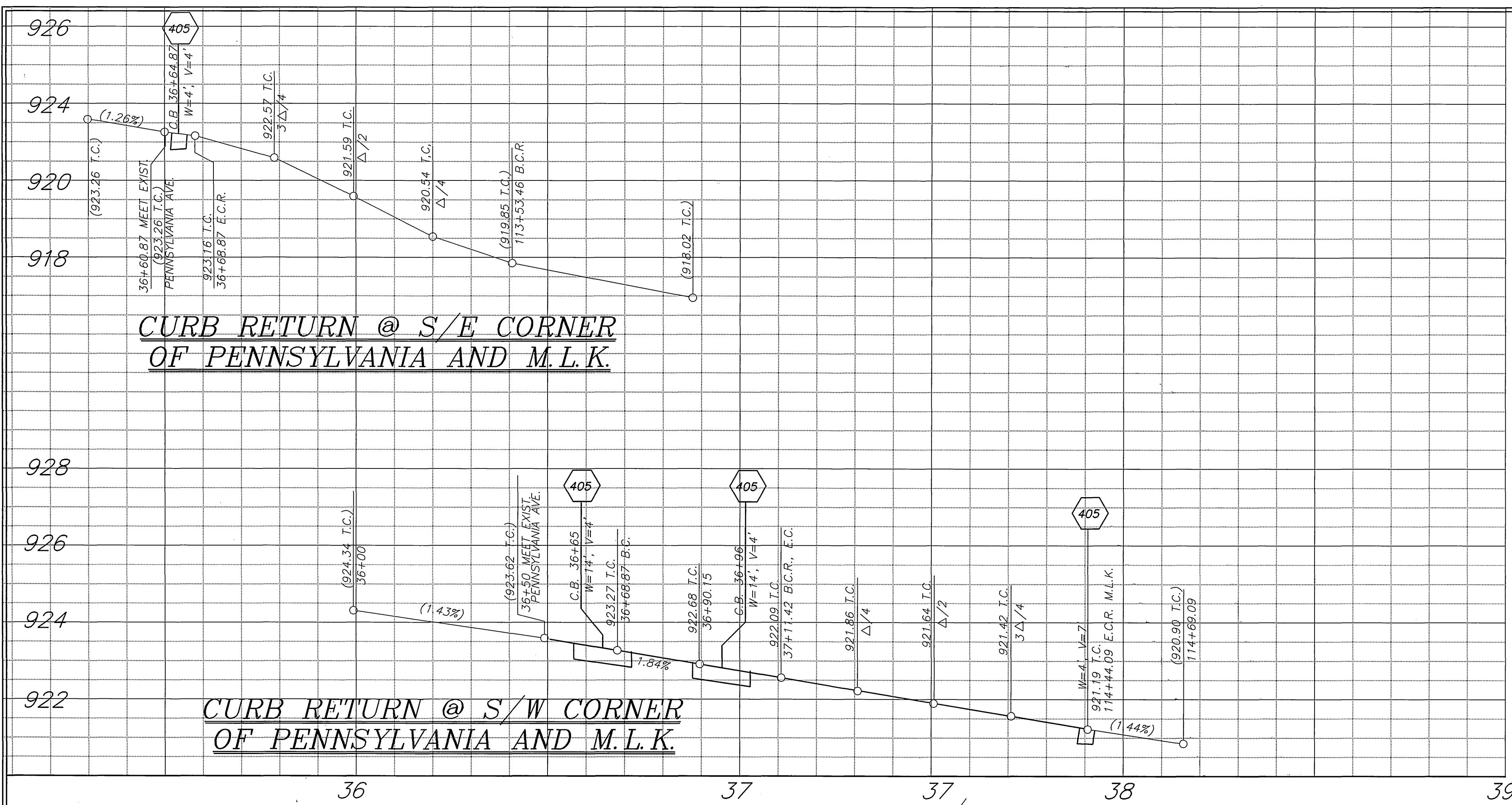
14TH ST / MARTIN LUTHER KING BLVD  
 STREET IMPROVEMENTS  
 BERMUDA TO ANGELO

HORIZ. SCALE: 1" = 20' VERT. SCALE: 1" = 2'

ACCT. No. 9535327152 44022309  
**R-3571**  
 SHEET 7 OF 11

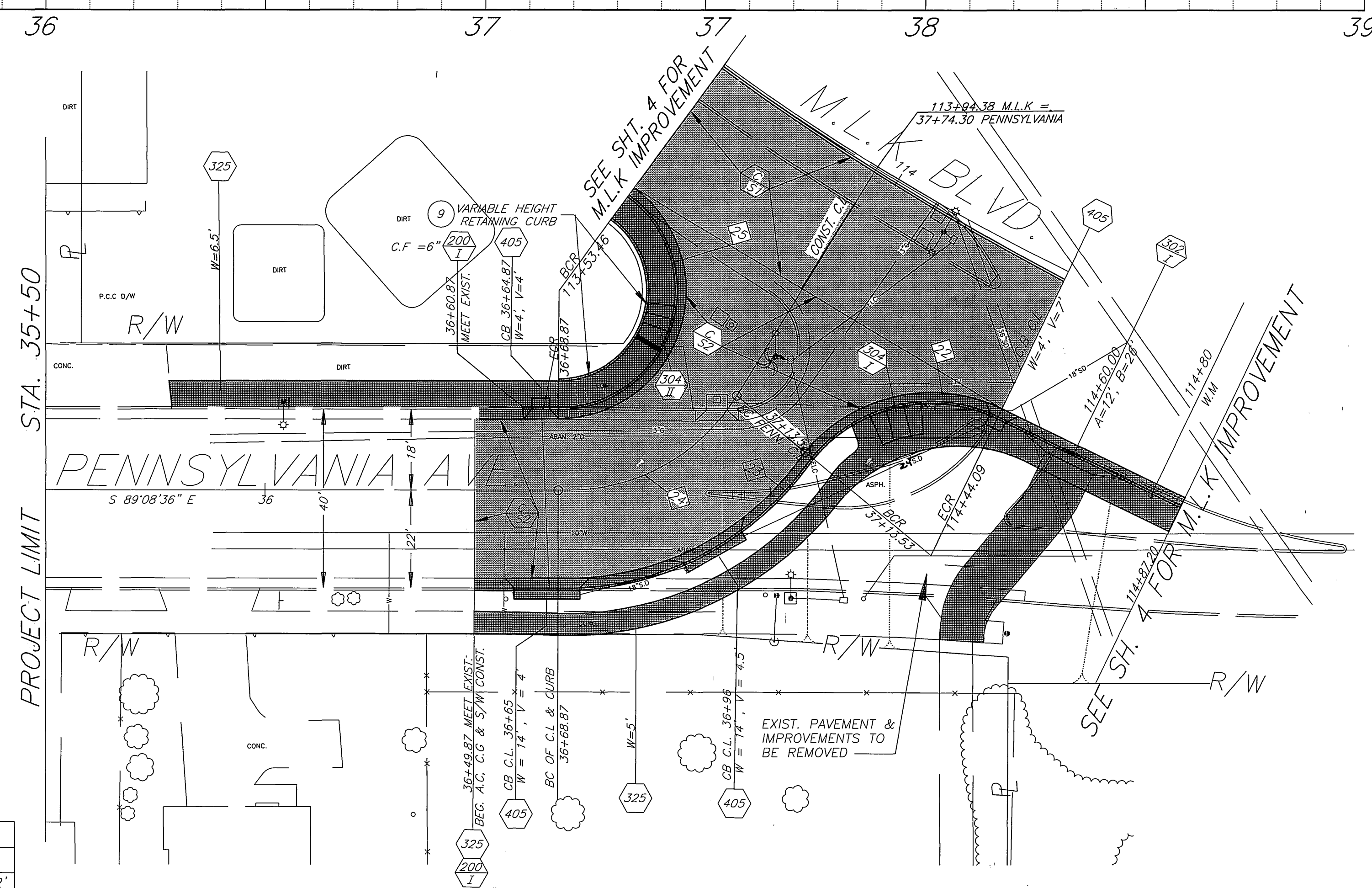
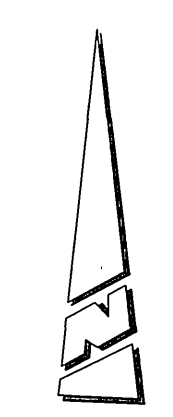
NOV 20 6/24/2000 LTH

PC-4289-S/M



**CURB RETURN @ S/E CORNER  
OF PENNSYLVANIA AND M.L.K.**

**CURB RETURN @ S/W CORNER  
OF PENNSYLVANIA AND M.L.K.**



CURVE DATA				
Δ	R	L	T	
21	45° 22' 51"	500'	396.02'	209.02'
22	79° 56' 44"	35'	48.84'	29.34'
23	45° 22' 51"	67'	64.68'	35.11'
24	55° 51' 23"	45'	43.87'	23.85'
25	143° 50' 52"	27'	67.79'	82.72'
26	25° 45' 49"	550'	247.31'	125.78'
27	45° 22' 51"	470'	372.26'	196.51'
28	45° 22' 52"	598'	473.65'	250.03'
29	45° 22' 52"	612'	484.73'	255.89'
30	90° 01' 49"	35'	55'	35.02'
31	89° 59' 15"	35'	54.97'	34.99'
32	89° 59' 15"	20'	31.41'	20'

NOTES:  
TRAFFIC SIGNS TO BE SALVAGED AS NOTED IN SPECIAL PROVISIONS.  
UTILITY POLES TO BE RELOCATED BY OTHERS.

**ENGINEER IN RESPONSIBLE CHARGE**  
  
 RONALD C. MUELLER  
 R.C.E. No. 29510 expires 3/31/03  
 DATE 6-7-2000

MARK	REVISIONS	APPR.	DATE

CITY OF RIVERSIDE, CALIFORNIA  
 PUBLIC WORKS DEPARTMENT

APPROVED BY	BY	DATE	APPROVED BY
DEPUTY P.W. DIRECTOR	<i>R.M. Swank</i>	6-8-2000	R.M. Swank
PRINCIPAL ENGINEER			PUBLIC WORKS DIRECTOR
STREET SERVICES			
SURVEYOR			
TRAFFIC DIVISION			
PARKS DEPARTMENT			

\*AS-BUILT PER PLANS 6-09-03 LHT

14TH ST / MARTIN LUTHER KING BLVD  
 STREET IMPROVEMENTS  
 BERMUDA TO ANGELO

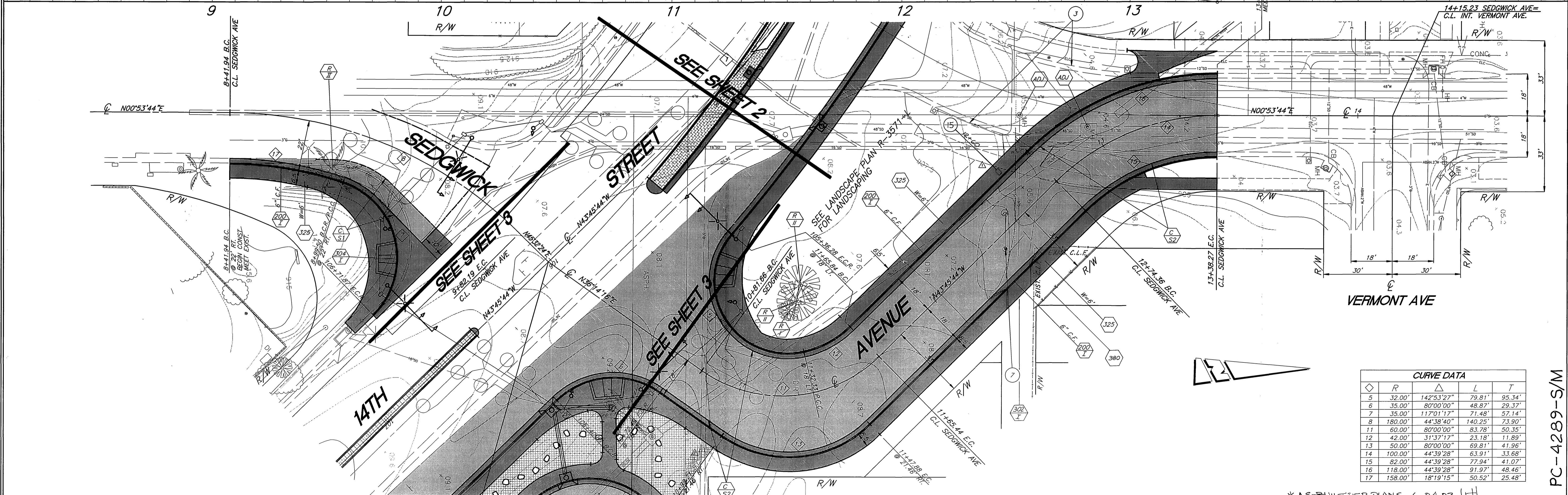
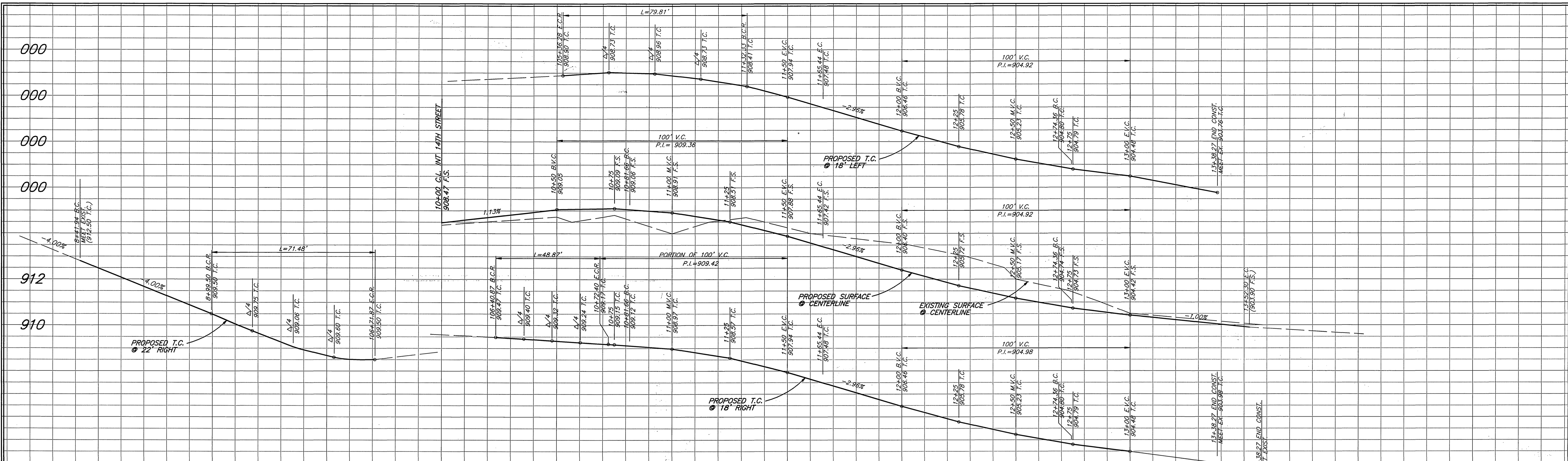
ACCT. No. 9535327152 44022309  
 R-3571  
 SHEET 8 OF 11

HORIZ. SCALE: 1" = 20' VERT. SCALE: 1" = 2'

PC-4289-S/M

INDEXED 6/24/2000 LHT





CURVE DATA				
Station	R	Δ	L	T
5	32.00'	142°53'27"	79.81'	95.34'
6	35.00'	80°00'00"	48.87'	29.37'
7	35.00'	117°01'17"	71.48'	57.14'
8	180.00'	44°38'40"	140.25'	73.90'
11	60.00'	80°00'00"	83.78'	50.35'
12	42.00'	31°37'17"	23.18'	11.89'
13	50.00'	80°00'00"	69.81'	41.96'
14	100.00'	44°39'28"	63.91'	33.68'
15	82.00'	44°39'28"	73.94'	41.07'
16	118.00'	44°39'28"	91.97'	48.46'
17	158.00'	18°19'15"	50.52'	25.48'

\* AS-BUILT PER PLANS 6-04-03 L/H

SEE PLAN X-151 FOR TRAFFIC SIGNAL IMPROVEMENTS

106+01.25 14TH STREET=  
10+00.00 SEDGWICK AVENUE  
C.L. INTERSECTION

**GEORGIA STREET**  
SEE SHEET 10

ENGINEER IN RESPONSIBLE CHARGE  
  
 Ronald C. Mueller  
 R.C.E. No. 29510 expires 3/31/03  
 DATE 5-25-00

REMOVED RADII FROM STAMPED CONCRETE REM 6-7-00  
 ADDED 1/4" METER PER NOTE 15 REM 6-7-00  
 DESIGNED BY CURT DRAWN BY \_\_\_\_\_ CHECKED BY ROM

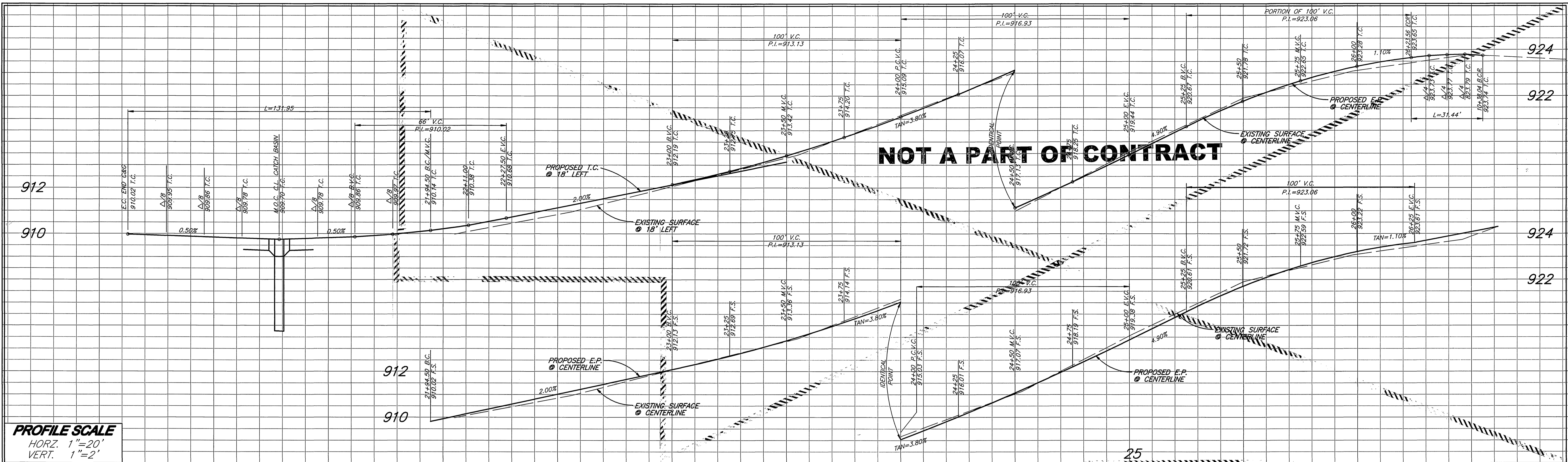
CITY OF RIVERSIDE, CALIFORNIA  
 PUBLIC WORKS DEPARTMENT  
 APPROVED BY:   
 DEPUTY P.W. DIRECTOR  
 PRINCIPAL ENGINEER  
 STREET SERVICES  
 SURVEYOR  
 TRAFFIC DIVISION  
 PARKS DEPARTMENT

**14TH ST / MARTIN LUTHER KING BLVD**  
**STREET IMPROVEMENTS**  
 BERMUDA TO ANGELO  
 HORIZ. SCALE: 1" = 20' VERT. SCALE: 1" = 2'

ACCT. No. 9535327152 44022309  
**R-3571**  
 SHEET 9 OF 11

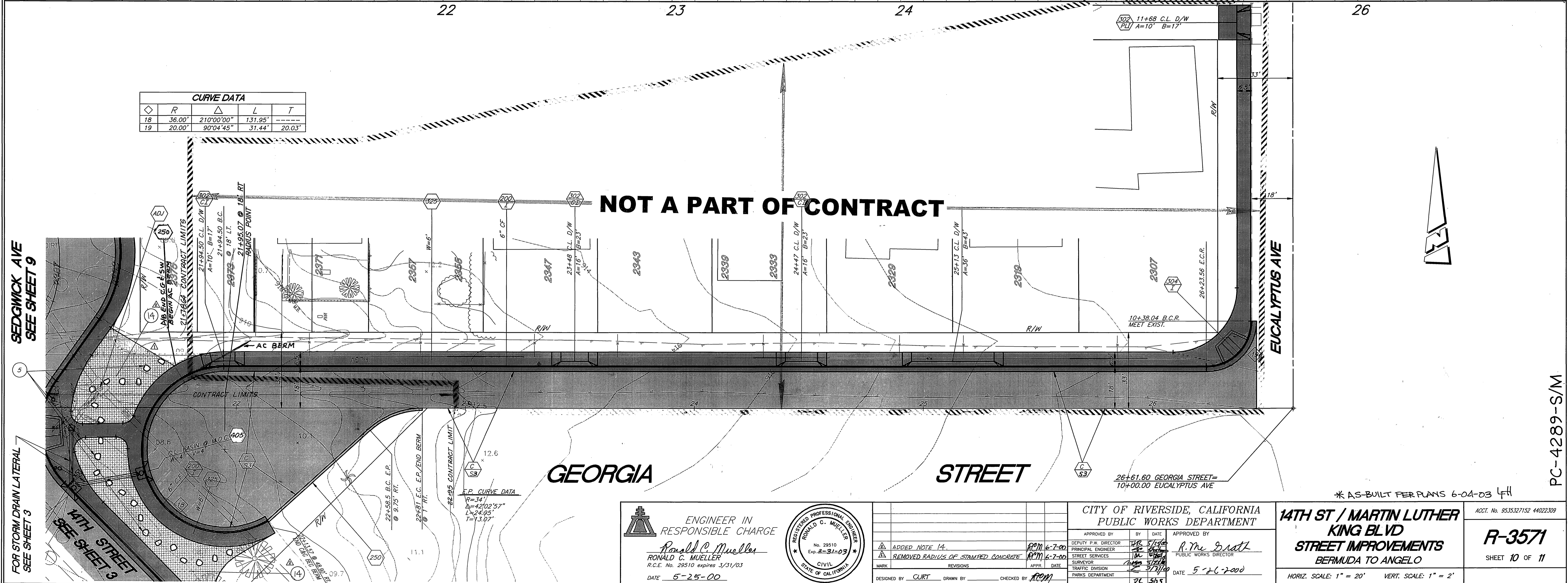
PC-4289-S/M

140EX6D 6/20/2000 L/H



**PROFILE SCALE**  
 HORZ. 1"=20'  
 VERT. 1"=2'

Curve No.	R	Δ	L	T
18	36.00'	210°00'00"	131.95'	---
19	20.00'	90°04'45"	31.44'	20.03'



FOR STORM DRAIN LATERAL SEE SHEET 3  
 14TH STREET SEE SHEET 3

PC-4289-S/M

**NOT A PART OF CONTRACT**

**GEORGIA STREET**

ENGINEER IN RESPONSIBLE CHARGE  
 Ronald C. Mueller  
 R.C.E. No. 29510 expires 3/31/03  
 DATE 5-25-00

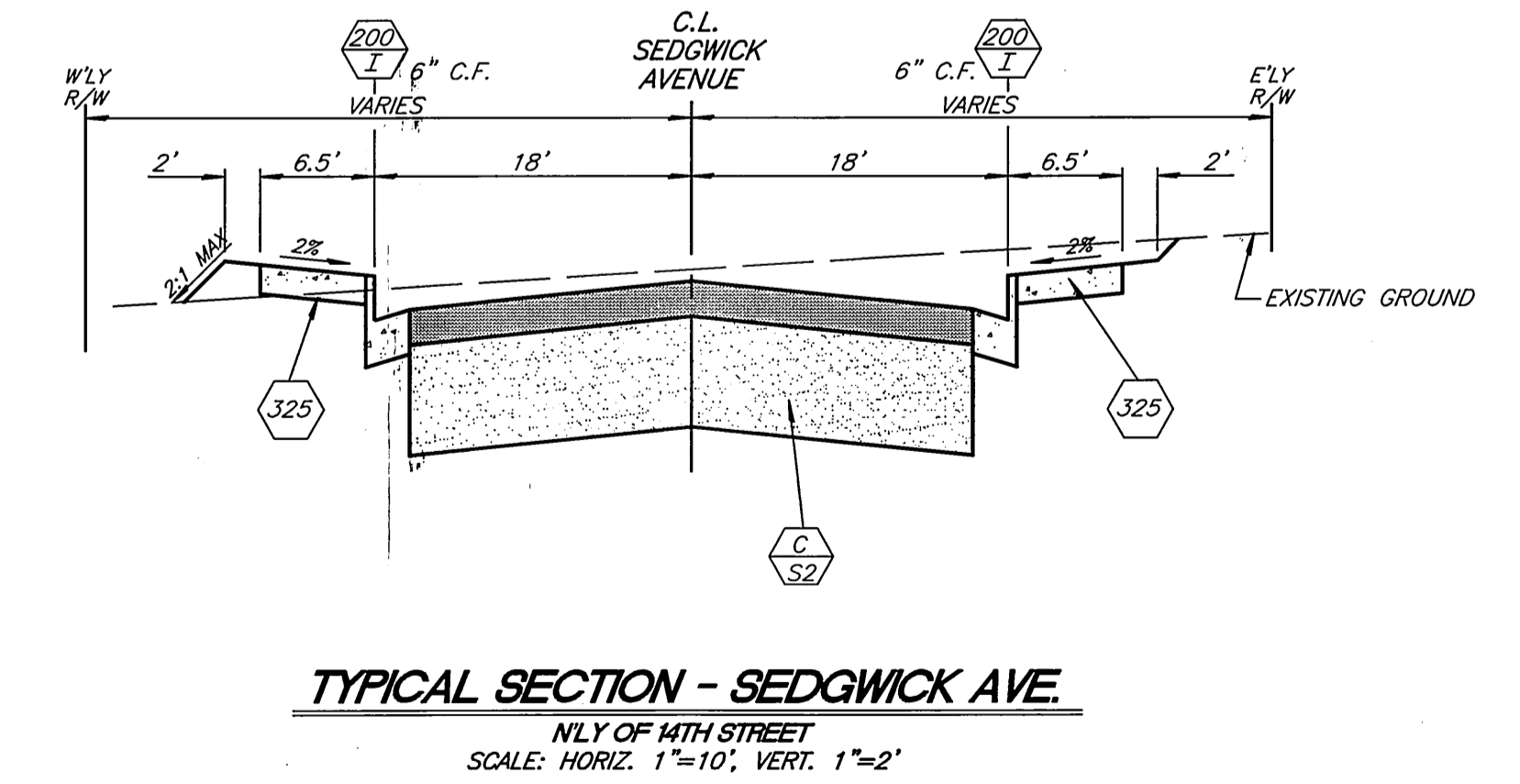
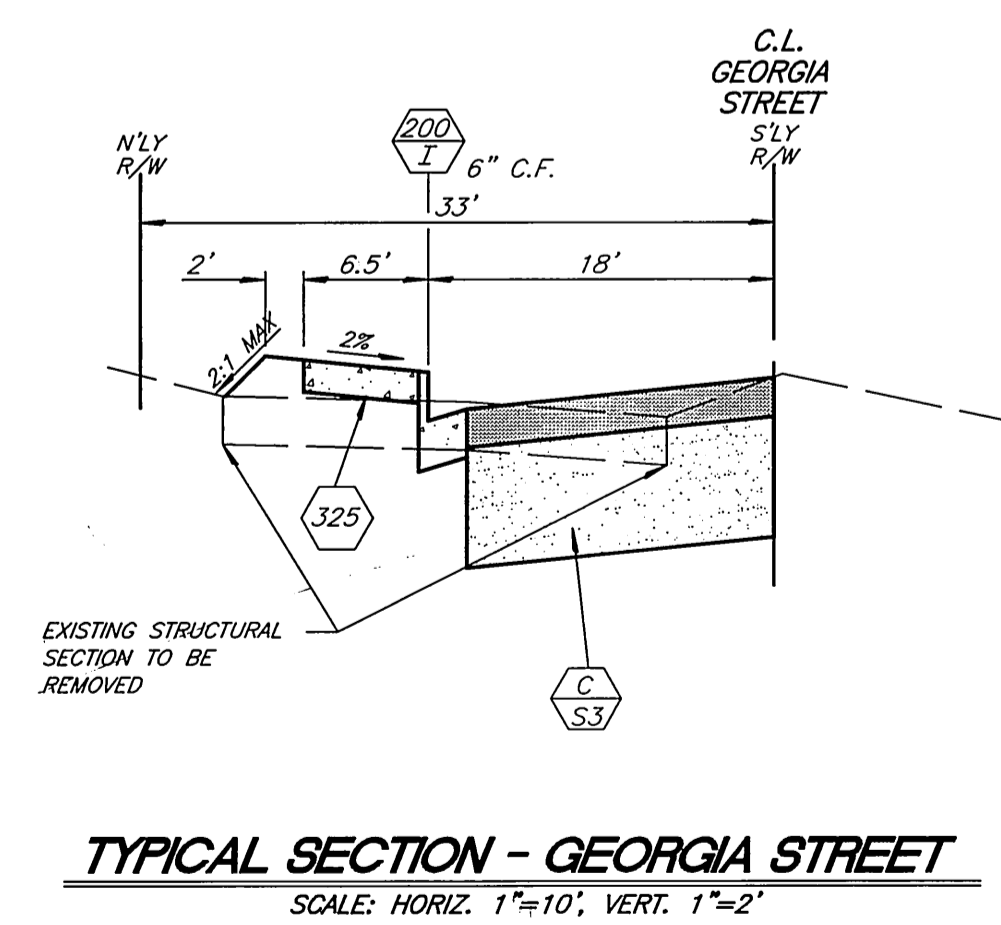
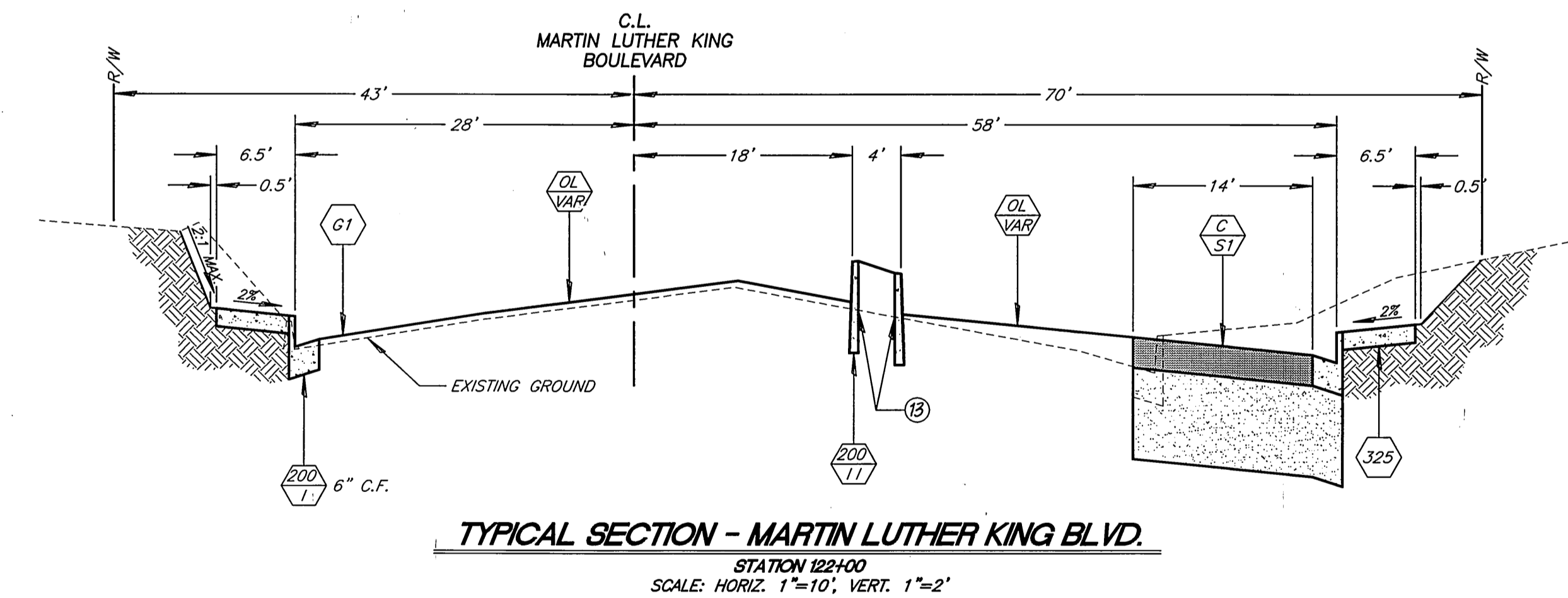
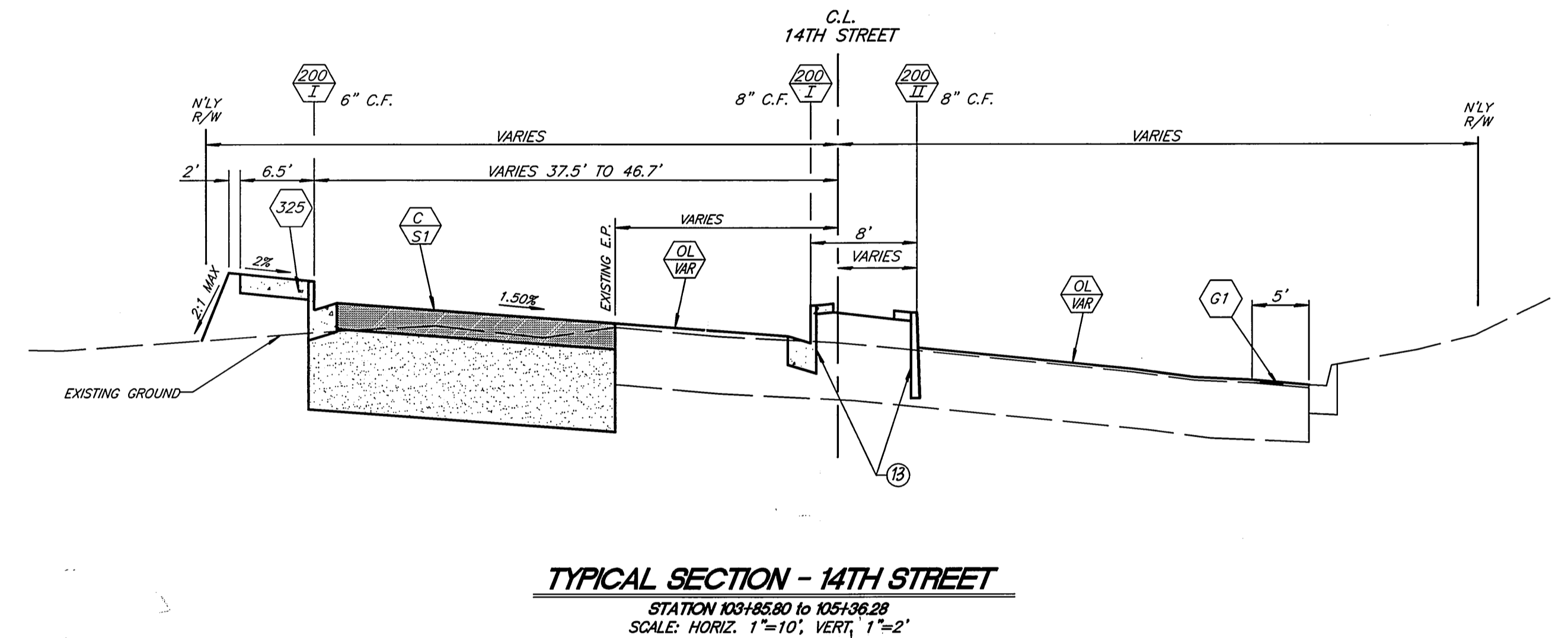
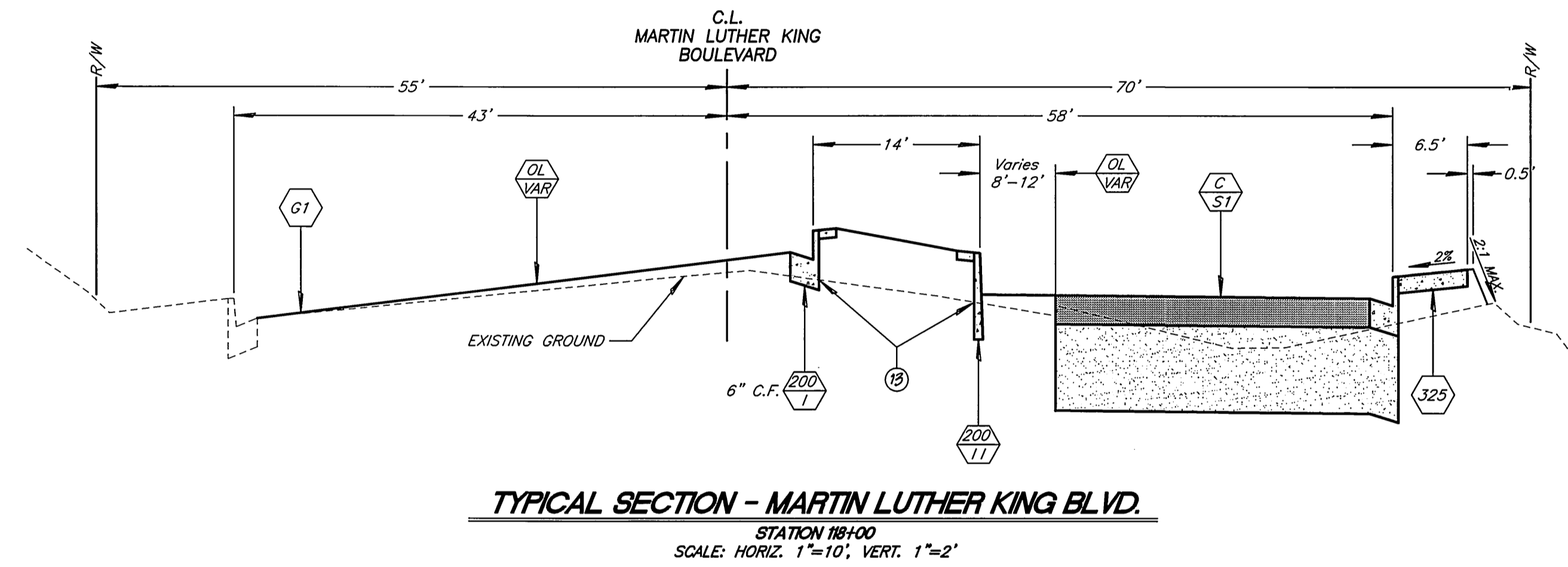
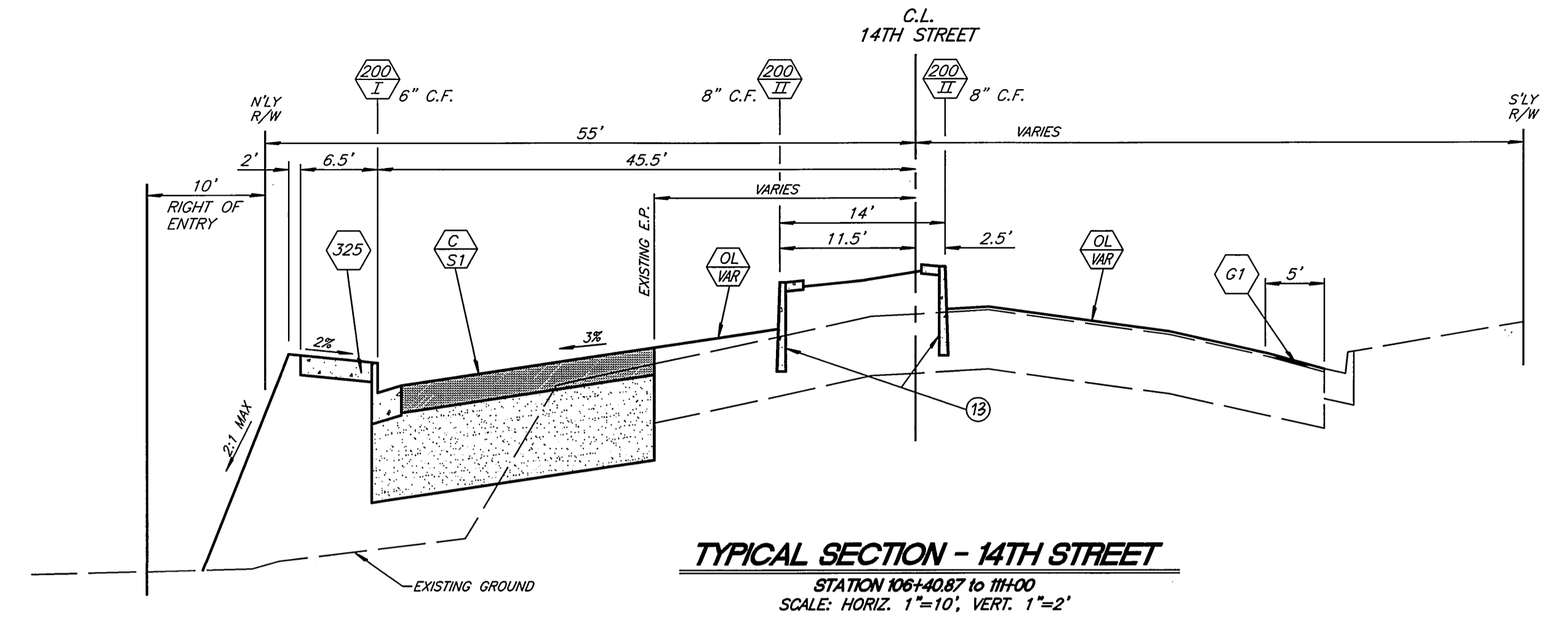
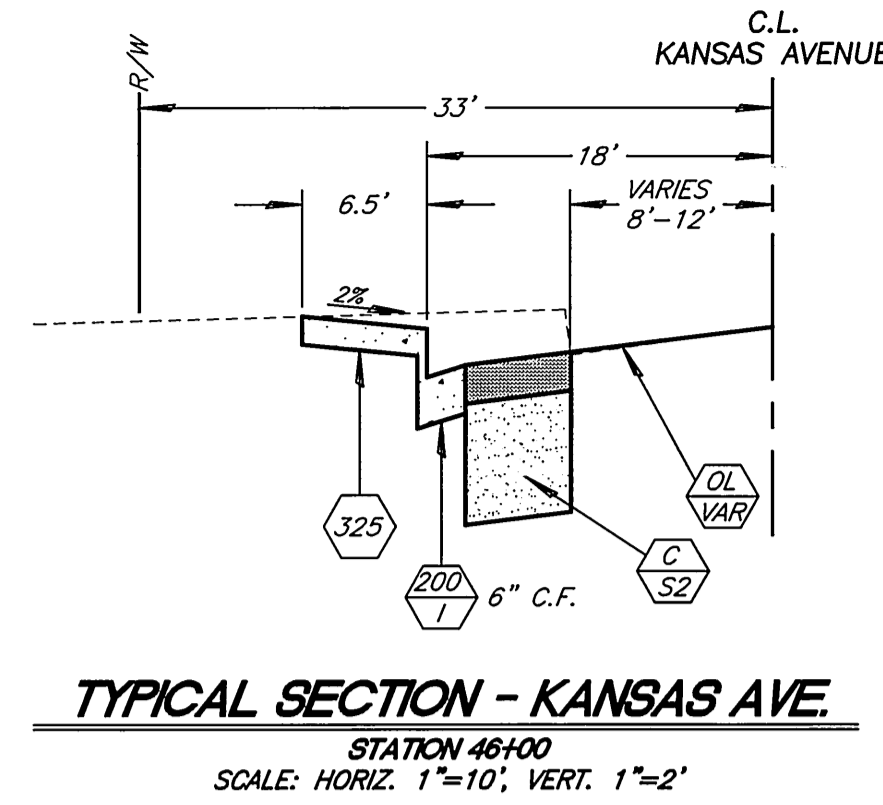
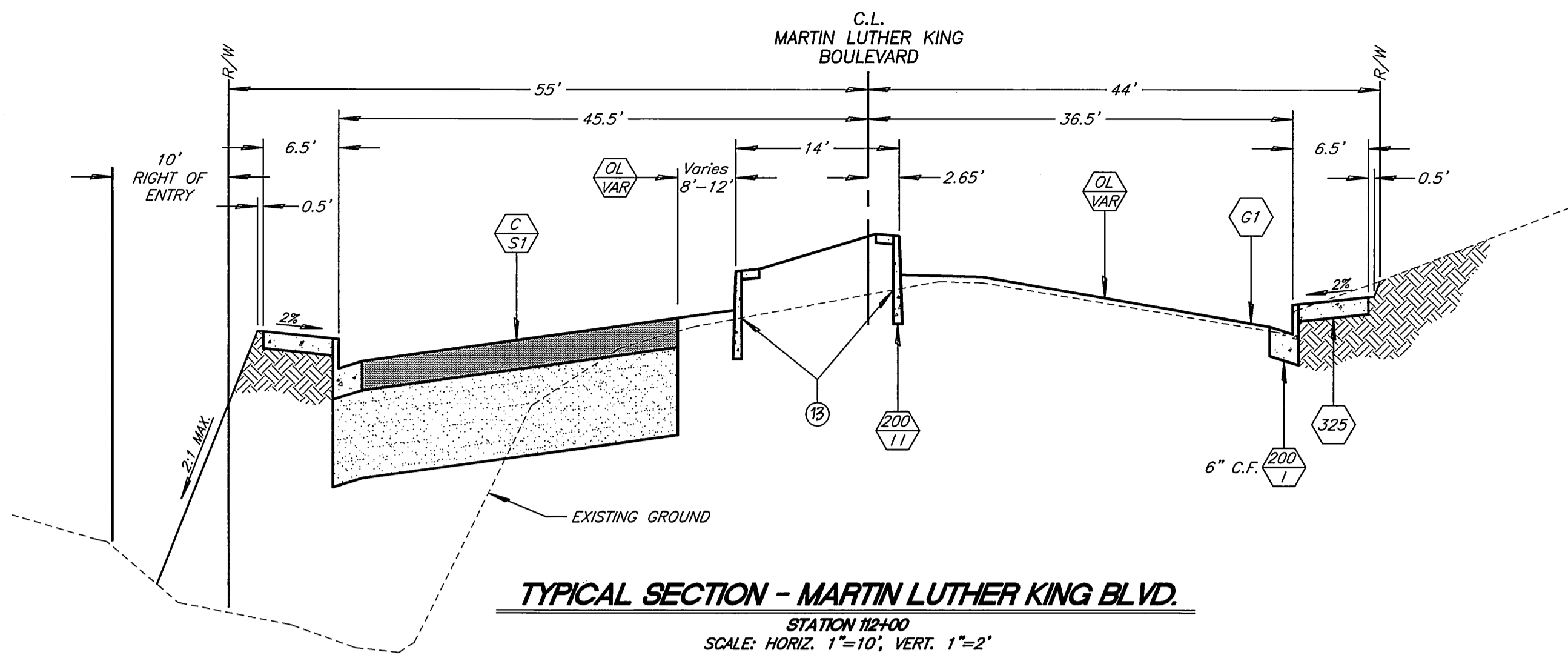
DESIGNED BY CURT DRAWN BY CHECKED BY

CITY OF RIVERSIDE, CALIFORNIA  
 PUBLIC WORKS DEPARTMENT  
 APPROVED BY: R. M. Smith  
 PUBLIC WORKS DIRECTOR  
 DATE: 5-26-2000

14TH ST / MARTIN LUTHER KING BLVD  
 STREET IMPROVEMENTS  
 BERMUDA TO ANGELO  
 HORIZ. SCALE: 1" = 20' VERT. SCALE: 1" = 2'

R-3571  
 SHEET 10 OF 11

INDEXED 6/20/2000 lft

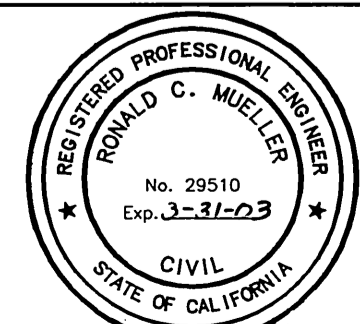


**CONSTRUCTION NOTES**

- NUMBERS ABOVE 100 IN A HEXAGON ON THE PLAN REFER TO THE RESPECTIVE STANDARD DRAWING AND SHALL BE CONSTRUCTED ACCORDINGLY, UNLESS MODIFICATIONS ARE NOTED ON THE PLAN. ANY NUMBER SHOWN BELOW THE STANDARD DRAWING NUMBER INDICATES THE SPECIFIC ALTERNATE TO BE CONSTRUCTED.
- C S1 CONSTRUCT STRUCTURAL SECTION OF 0.50' AC OVER 1.50' C.A.B. (MARTIN LUTHER KING).
- C S2 CONSTRUCT STRUCTURAL SECTION OF 0.33' AC OVER 1.17' C.A.B. (SEDGWICK, PENNSYLVANIA & KANSAS).
- C S3 CONSTRUCT STRUCTURAL SECTION OF 0.21' AC OVER 0.75' C.A.B. (GEORGIA).
- OL VAR OVERLAY EXISTING PAVEMENT WITH VARIABLE THICKNESS A.C. (0.10' Min.).
- G1 OR G2 PRIOR TO CONSTRUCTION OF ASPHALT OVERLAY ADJACENT TO THE EXISTING GUTTER LIP OR A JOIN LINE, COLD-MILL THE EXISTING PAVEMENT WITHIN (5' FOR G1) OR 10' FOR G2) OF THE GUTTER LIP OR JOIN LINE. THE DEPTH OF COLD MILLING SHALL BE 0.10' BELOW THE GUTTER LIP AND CARRIED OUT UNIFORMLY.
- 13 ALL PAVEMENT BETWEEN PROPOSED MEDIAN CURBS IS TO BE REMOVED. IN AREAS TO BE PLANTED 12" OF CLASS A TOPSOIL IS TO BE USED.

- C S1 CONSTRUCT STRUCTURAL SECTION OF: 0.50' D.G.A.C. OVER 1.50' C.A.B.
- C S2 CONSTRUCT STRUCTURAL SECTION OF: 0.33' D.G.A.C. OVER 1.17' C.A.B.
- C S3 CONSTRUCT STRUCTURAL SECTION OF: 0.21' D.G.A.C. OVER 0.75' C.A.B.
- OL VAR CONSTRUCT A D.G.A.C. OVERLAY 0.10'± THICK.

ENGINEER IN RESPONSIBLE CHARGE  
 Ronald C. Mueller  
 R.C.E. No. 29510 expires 3/31/03  
 DATE 5-25-00



MARK	REVISIONS	APPR.	DATE

CITY OF RIVERSIDE, CALIFORNIA  
 PUBLIC WORKS DEPARTMENT

APPROVED BY	BY	DATE	APPROVED BY
DEPUTY P.W. DIRECTOR	RM	5/26/00	R.M. Smith
PRINCIPAL ENGINEER	RM	5/26/00	PUBLIC WORKS DIRECTOR
STREET SERVICES	RM	5/26/00	
SURVEYOR	RM	5/26/00	
TRAFFIC DIVISION	RM	5/26/00	
PARKS DEPARTMENT	RM	5/26/00	

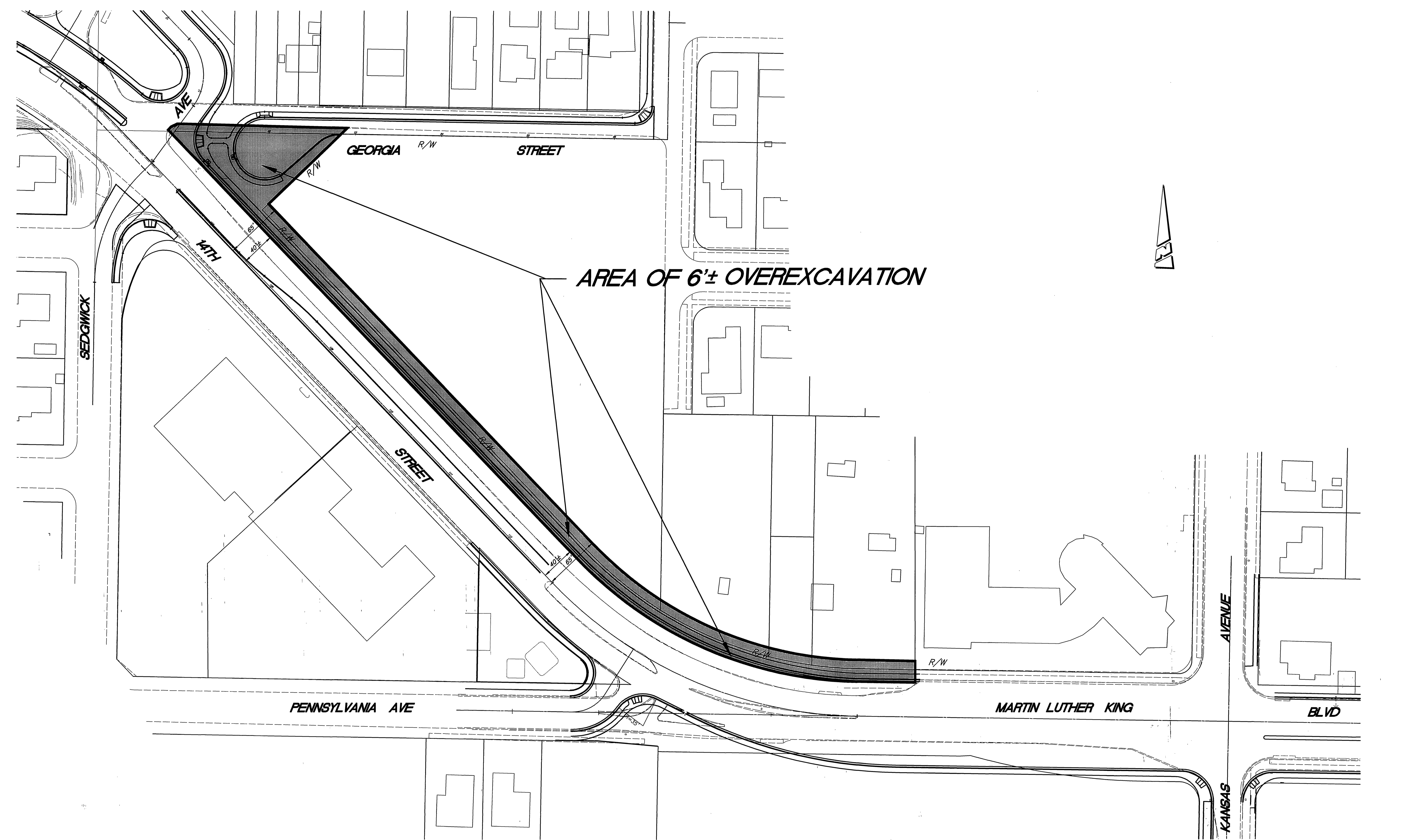
14TH ST / MARTIN LUTHER KING BLVD  
 STREET IMPROVEMENTS  
 BERMUDA TO ANGELO  
 HORIZ. SCALE: 1" = 20' VERT. SCALE: 1" = 2'

ACCT. No. 953327152 44022309  
**R-3571**  
 SHEET 11 OF 11

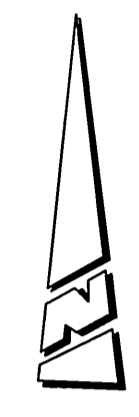
\* AS-BUILT PER PLANS 6-04-03 LH

INDEXED 6/20/2000 LH

PC-4289-S/M



**AREA OF 6± OVEREXCAVATION**



**NOTE:**  
SEE SOILS REPORT AVAILABLE IN ENGINEER'S OFFICE FOR OVEREXCAVATION AND COMPACTION REQUIREMENTS

\* AS-BUILT PER PLANS 6-04-03 *lft*

ENGINEER IN RESPONSIBLE CHARGE  
*Ronald C. Mueller*  
RONALD C. MUELLER  
R.C.E. No. 29510 expires 3/31/03  
DATE 5-25-00



MARK	REVISIONS	APPR.	DATE

CITY OF RIVERSIDE, CALIFORNIA  
PUBLIC WORKS DEPARTMENT

APPROVED BY	BY	DATE	APPROVED BY
DEPUTY P.W. DIRECTOR	<i>R. Me Burtz</i>	5/26/00	R. Me Burtz
PRINCIPAL ENGINEER			
STREET SERVICES			
SURVEYOR			
TRAFFIC DIVISION			
PARKS DEPARTMENT			

DESIGNED BY *CURT* DRAWN BY \_\_\_\_\_ CHECKED BY *ROM*

**14TH ST / MARTIN LUTHER KING BLVD**  
**STREET IMPROVEMENTS**  
**OVEREXCAVATION PLAN**

HORIZ. SCALE: 1" = 50'

ACCT. No. 9535327152 44022209  
**R-3571**  
SHEET 11A OF 11

PC-4289-S/M

*INDEXED 6/29/2000 lft*