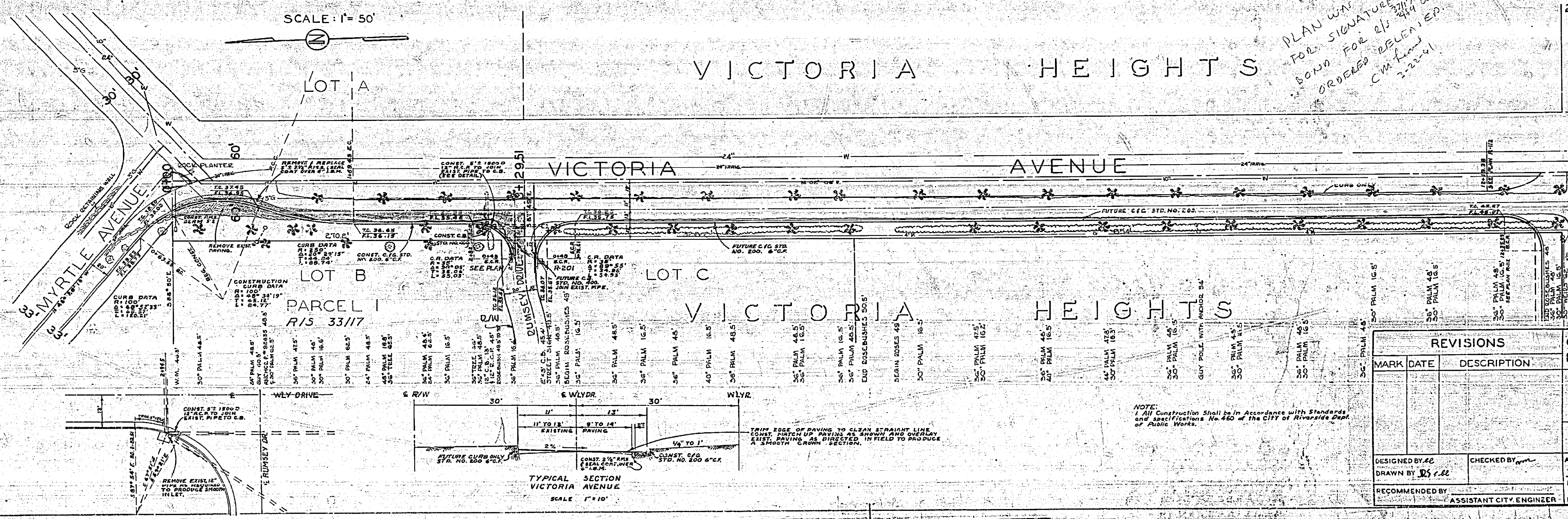


B.M. - 936.60 1/4" IN. WALL SOUTH END SMALL TRIANGULAR ISLAND AT VICTORIA AVE. & MYRTLE AVE.
 F.B. - 63176, P/1136, W/4, V/1-3, 67818
 SCALES: VERTICAL: 1"=5'
 HORIZONTAL: 1"=50'

NO.	DATE	DESCRIPTION

NO.	DATE	DESCRIPTION



PLAN WAS READY FOR SIGNATURE WHEN BOND FOR 20% WAS ORDERED DELETED. CM 2-22-41

VOID see R-603

REVISIONS		CITY OF RIVERSIDE CALIFORNIA DEPARTMENT OF PUBLIC WORKS	
MARK	DATE	DESCRIPTION	

DESIGNED BY: <i>ec</i>	CHECKED BY: <i>[Signature]</i>	APPROVED BY: <i>[Signature]</i>
DRAWN BY: <i>DS</i>	RECOMMENDED BY: <i>[Signature]</i>	DIRECTOR OF PUBLIC WORKS: <i>[Signature]</i>
	ASSISTANT CITY ENGINEER	DATE: <i>[Date]</i>

C.B. DETAIL
SCALE 1/2"=1'

