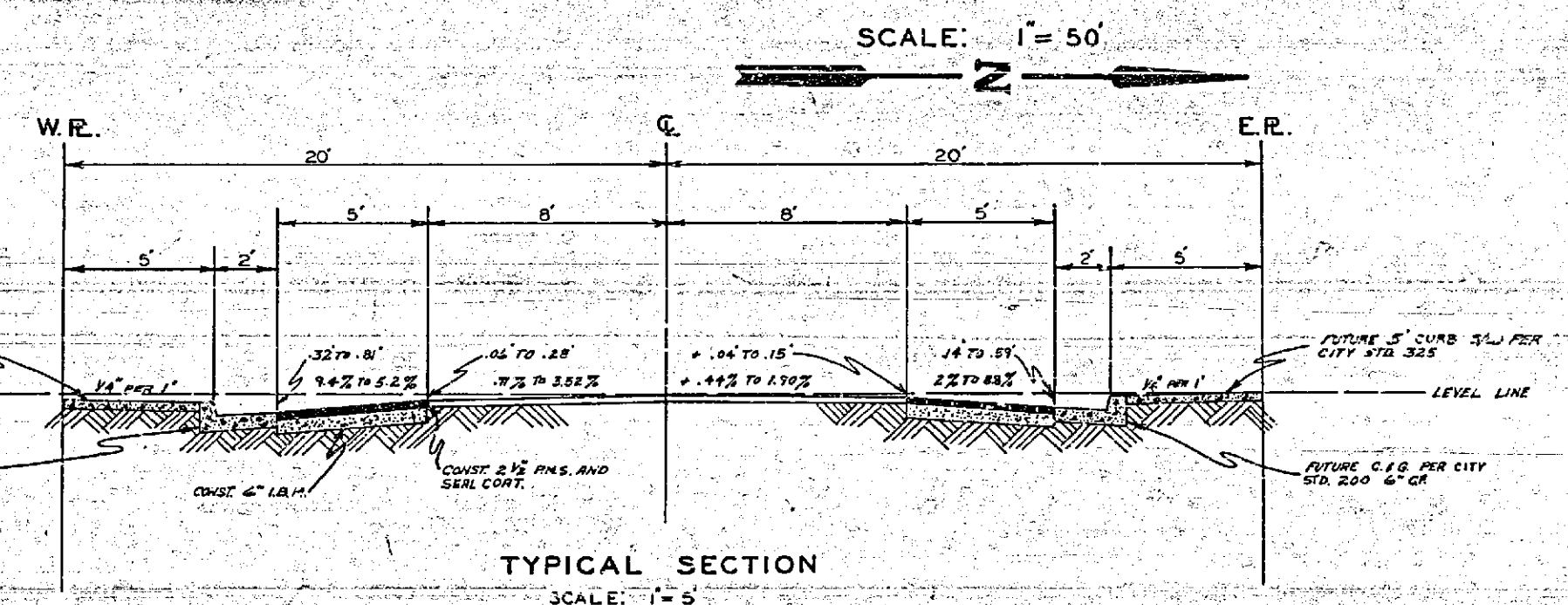
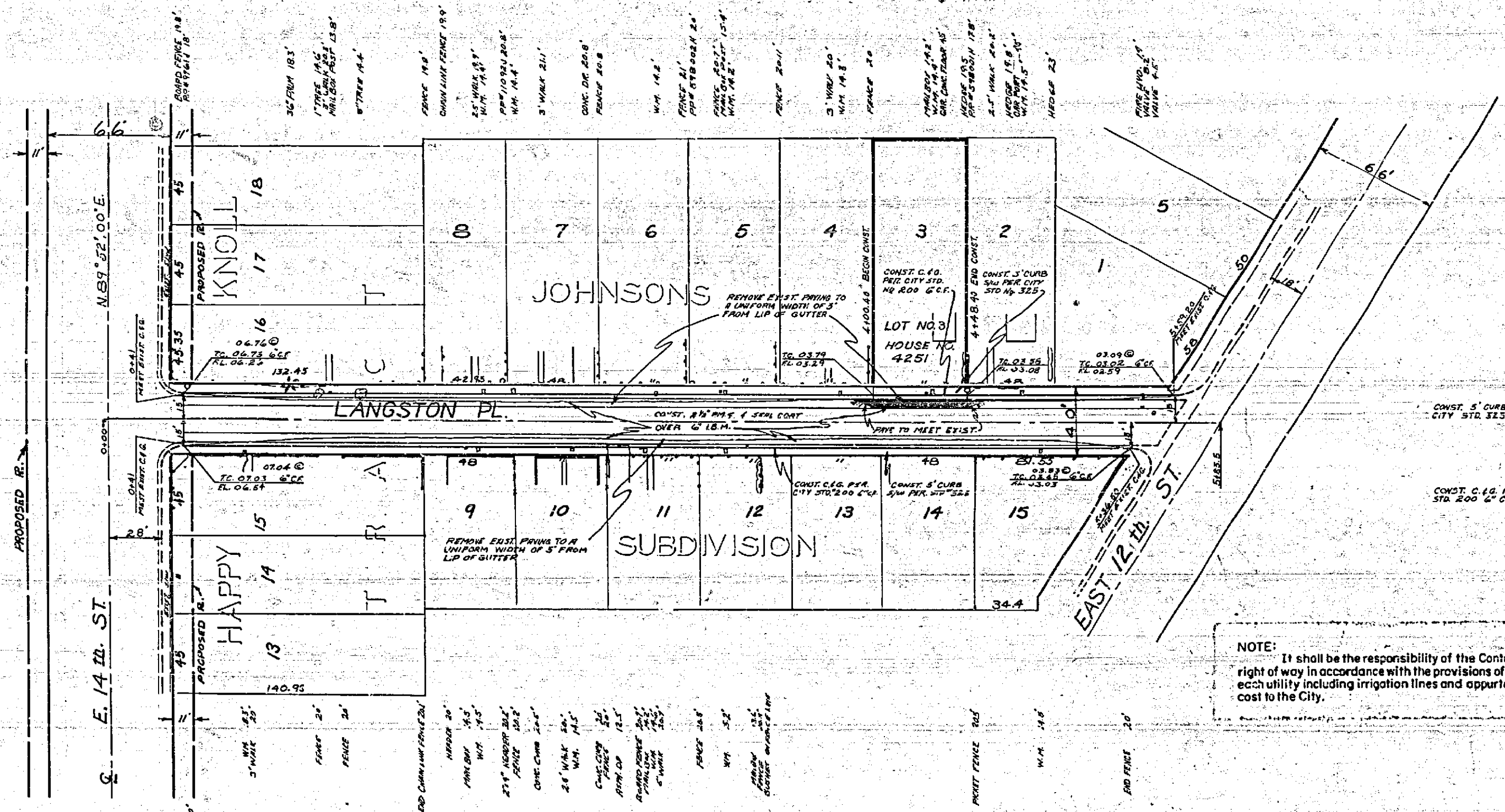


B.M. ELEV-902.99 L&N IN S.W. CB.
 RET. LANGSTON & 12th ST.
 F.B. 671/44-51
 SCALE: HOR. 1"=50'
 VERT. 1"=5'

NO.	REVISION	DATE
1	AS SHOWN	



NOTE: It shall be the responsibility of the Contractor to clear the right of way in accordance with the provisions of the law as it affects each utility including irrigation lines and appurtenances and at no cost to the City.

REVISIONS			CITY OF RIVERSIDE CALIFORNIA DEPARTMENT OF PUBLIC WORKS	
MARK	DATE	DESCRIPTION		
			CURB AND GUTTER LANGSTON PL. BETWEEN 12TH AND 14TH STREETS.	
DESIGNED BY	BL	CHECKED BY	WJG	APPROVED BY
DRAWN BY	J.J. WISCH	DIRECTOR OF PUBLIC WORKS		
RECOMMENDED BY	A. B. ...	ASSISTANT CITY ENGINEER	DATE	2/2/60
				R362
				SHEET 1 OF 1

NO.	REVISION	DATE
1	AS SHOWN	

