

RIVERSIDE CALIFORNIA



PUBLIC WORKS DEPARTMENT

WELLS AVENUE WIDENING TYLER STREET TO CREST AVENUE

SPECIFIC CONSTRUCTION NOTES

- 100** NUMBERS ABOVE 100 IN A HEXAGON ON THE PLAN REFER TO THE RESPECTIVE STANDARD DRAWING AND SHALL BE CONSTRUCTED ACCORDINGLY. UNLESS MODIFICATIONS ARE NOTED ON THE PLAN OR COVER SHEET. ANY NUMBER SHOWN BELOW THE STANDARD DRAWING NUMBER INDICATES THE SPECIFIC ALTERNATE TO BE CONSTRUCTED.
- ADJ** ADJUST SEWER, STORM DRAIN, ELECTRIC OR WATER MANHOLE OR GATE VALVE TO GRADE. ADJUSTMENT TO GRADE OR RELOCATION OF GAS AND TELEPHONE COMPANY'S FACILITIES WILL BE DONE BY OTHERS.
- C/S** CONSTRUCT STRUCTURAL SECTION OF 6" DGAC OVER COMPACTED NATIVE SOIL.
- OL 0.1** CONSTRUCT 0.10' THICK MINIMUM AC OVERLAY
- OL VAR** CONSTRUCT VARIABLE THICKNESS DGAC LEVELING COURSE
- R/I** REMOVE EXISTING TREE. CLASS I - 6" TO 18", CLASS II - OVER 18" TO 36", CLASS III - OVER 36".
- REL** RELOCATE EXISTING TRAFFIC CONTROL SIGNS AS DIRECTED BY THE PUBLIC WORKS INSPECTOR AND PER STANDARD DRAWING NUMBER 666.
- T** TRANSPLANT EXISTING PALM TREE ON SITE AS DIRECTED BY THE STREET TREE INSPECTOR AND AS DESCRIBED IN THE ACCOMPANYING SPECIAL PROVISIONS. FOR LOCATION AND DIAMETER SEE PLAN.
- W** WATER METER TO BE RELOCATED BY PUBLIC UTILITIES DEPARTMENT, WATER DIVISION. THE METER BOX IS TO BE ADJUSTED TO GRADE BY THE CONTRACTOR.
- E** ELECTRIC FACILITIES TO BE RELOCATED BY PUBLIC UTILITIES DEPARTMENT, ELECTRIC DIVISION.
- M** RELOCATE MAIL BOX PER SPECIAL PROVISIONS
- FEN** REMOVE AND RECONSTRUCT CHAIN LINK FENCE AT RIGHT OF WAY LINE. NEW FENCE HEIGHT TO MATCH EXISTING.
- G** GRIND CURB FACE TO 0" - SEE DETAIL BELOW
- G-1 0.1** GRIND EXISTING AC 0.10' BELOW GUTTER LIP OR OUTER EDGE OF PAVEMENT. DAYLIGHTING IN 5" OR 10" (TYPE I GRINDING) AS SHOWN ON PLANS AND AS DESCRIBED IN SPECIAL PROVISIONS
- TDL 4** TRAFFIC DETECTOR LOOP INSTALLATION NUMBER OF DETECTOR LOOPS

GENERAL CONSTRUCTION NOTES

- 1 EXISTING UTILITIES SHOWN ON THIS PLAN ARE PLOTTED FROM UTILITY RECORDS. THE CONTRACTOR IS REQUIRED TO TAKE DUE PRECAUTIONARY MEASURES TO LOCATE AND PROTECT ALL UTILITIES WHETHER OR NOT SHOWN ON THIS PLAN. IF THE COVER OF A UTILITY IS KNOWN, IT IS SHOWN IN THE PROFILE. UTILITIES SHOWN IN THE PROFILE AS INDICATES THAT THE COVER IS UNKNOWN, BUT THE UTILITY IS NOT EXPECTED TO CONFLICT WITH THE PROPOSED IMPROVEMENTS.
- 2 ALL ELEVATIONS SHOWN ON THE PLANS SHALL BE STAKED IN THE FIELD.
- 3 PRIME CONTRACTORS BIDDING THIS WORK SHALL HAVE A CLASS "A" LICENSE.
- 4 CONSTRUCTION SHALL BE IN ACCORDANCE WITH THE CITY OF RIVERSIDE STANDARD DWGS AND STANDARD SPECIFICATIONS FOR PUBLIC WORKS CONSTRUCTION, 1997 EDITION.
- 5 TRIM EDGE OF EXISTING PAVEMENT WHERE NEW PAVEMENT JOINS TO A SMOOTH STRAIGHT LINE.

CONSTRUCTION LEGEND

CENTER LINE		TOP OF SLOPE	
RIGHT-OF-WAY		TOE OF SLOPE	
SUBDIVISION LOT LINE		DIRECTION OF FLOW	

EXISTING UNDERGROUND & TOPOGRAPHY LEGEND

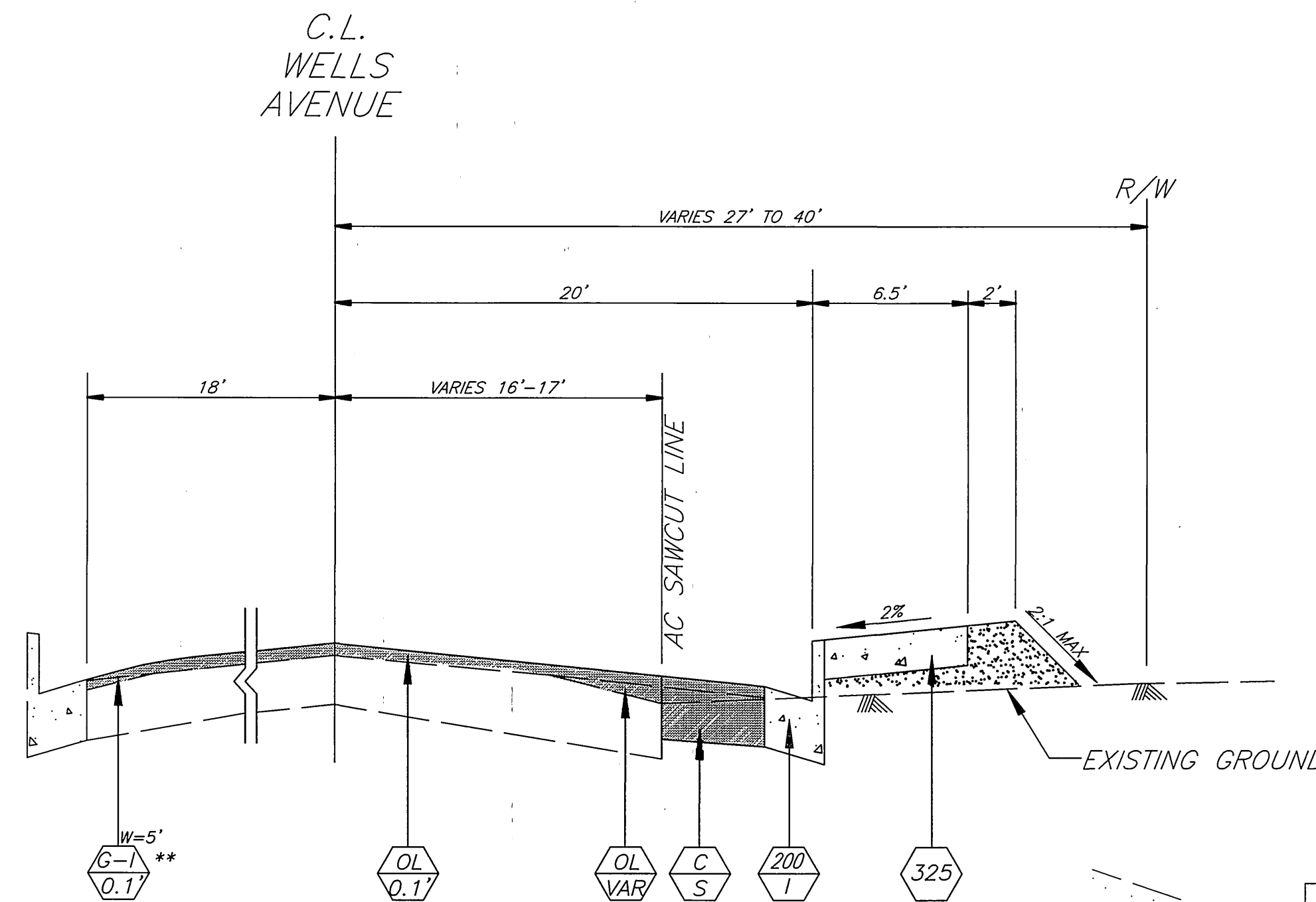
EXISTING UNDERGROUND UTILITIES:

SANITARY SEWER		TELEPHONE CONDUIT	
WATER LINE		ELECTRICAL CONDUIT	
STORM DRAIN		ELECTRIC LIGHTING CONDUIT	
GAS LINE		TRAFFIC SIGNAL	
ABANDONED UTILITY		FIRE ALARM	

EXISTING TOPOGRAPHY:

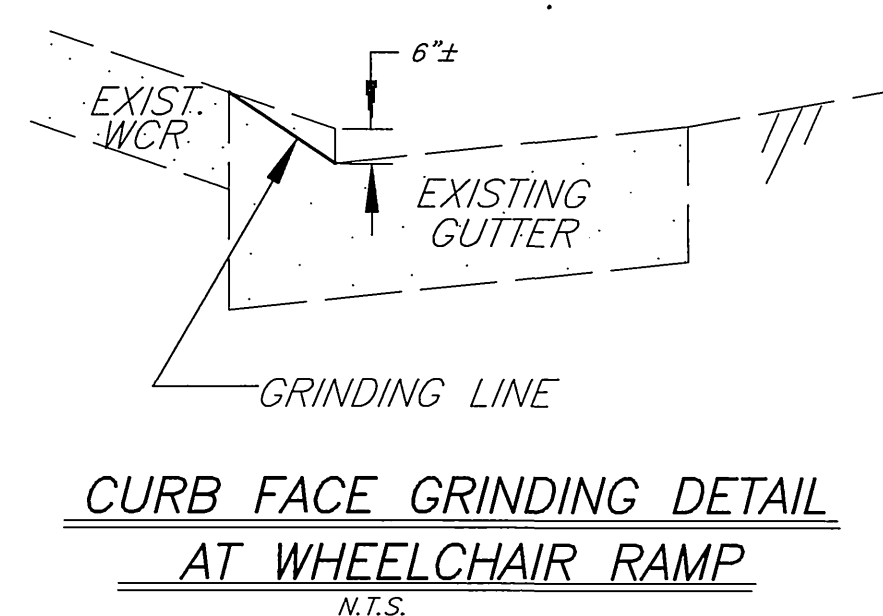
	BLOCK WALL		TOP OF SLOPE
	BOARD FENCE		TOE OF SLOPE
	WIRE FENCE		DIRECTION OF FLOW
	CHAIN LINK FENCE		

	SANITARY SEWER M.H.		POLE & GUY ANCHOR		PEDESTRIAN PUSH BUTTON
	SANITARY SEWER CLEANOUT		POWER POLE		RAILROAD TRACKS
	STORM DRAIN M.H.		TELEPHONE POLE		RAILROAD SIGN
	IRRIGATION WEIR		TELEPHONE RISER		RAILROAD SIGNAL
	WATER M.H.		JOINT USE POLE		TRAFFIC SIGNAL
	GAS M.H.		PULL BOX		TRAFFIC SIGNAL ON MAST ARM
	ELECTRIC M.H.		TRAFFIC SIGNAL		TRAFFIC SIGNAL CONTROLLER
	TELEPHONE M.H.		PARKING METER		TRAFFIC SIGNAL PRESSURE DETECTOR
	WATER METER		FIRE ALARM BOX		TRAFFIC SIGNAL LOOP DETECTOR
	FIRE HYDRANT		STREET NAME SIGN		STREET LIGHT & TRAFFIC SIGNAL ON MAST ARM
	SPRINKLER HEAD		GAS METER		STREET LIGHT (UPRIGHT)
	VALVE		MAIL BOX		STREET LIGHT ON MAST ARM
	AIR VALVE		FAUCET		STEEL POST
	AIR VENT		WALK-DON'T WALK PEDESTRIAN SIGNAL		WOOD POST
	BUS STOP SIGN		ELECTROLYSIS TEST STATION		
	BLOW-OFF VALVE		WHEEL STOP		
	IRRIGATION STAND PIPE		CONCRETE		
			ASPHALT		
			BUILDING		
			EDGE OF PAVEMENT		

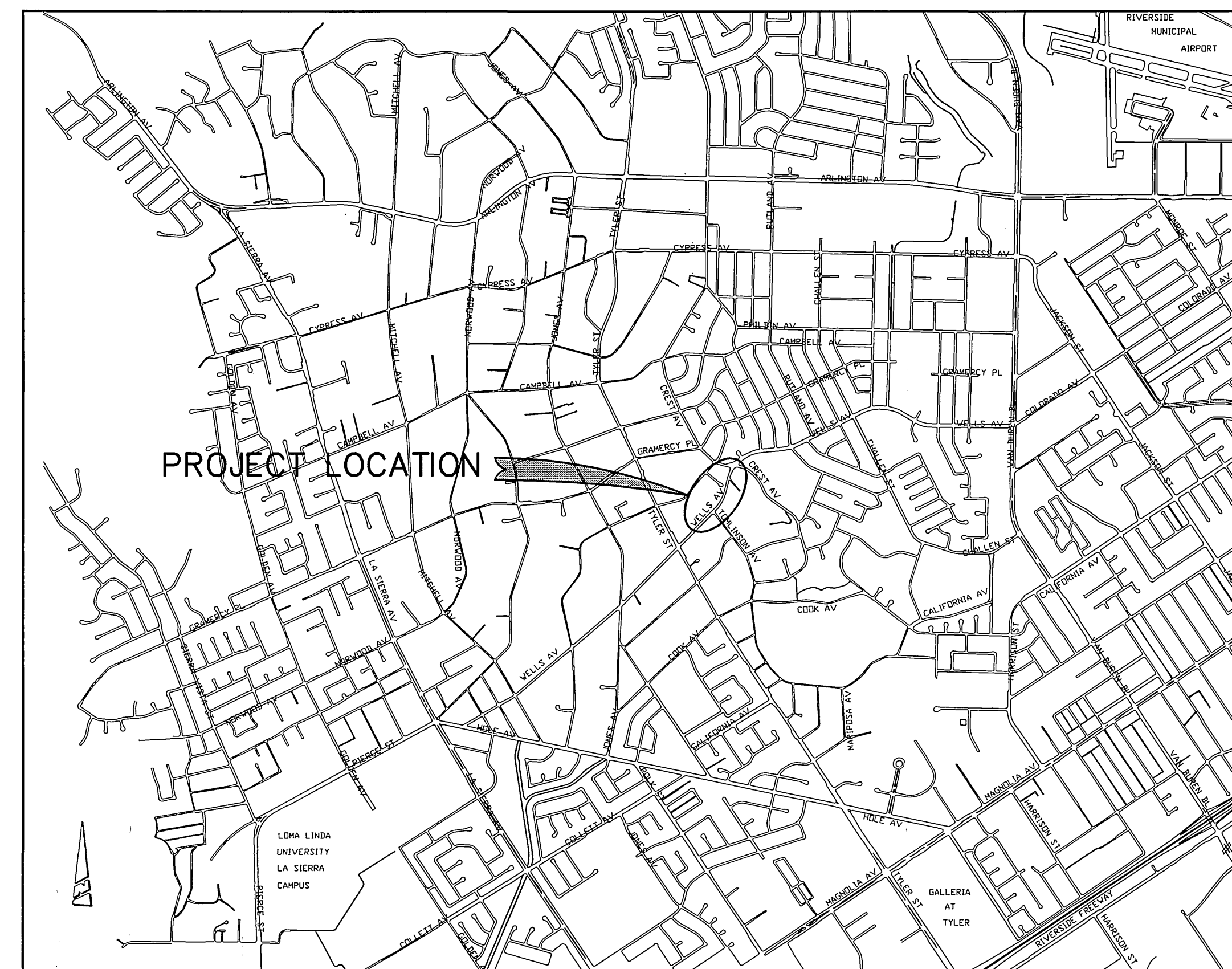


** ONLY AT CURB AND GUTTER LOCATIONS

TYPICAL SECTION - WELLS AVENUE
STRUCTURAL SECTION
6" AC OVER COMPACTED NATIVE



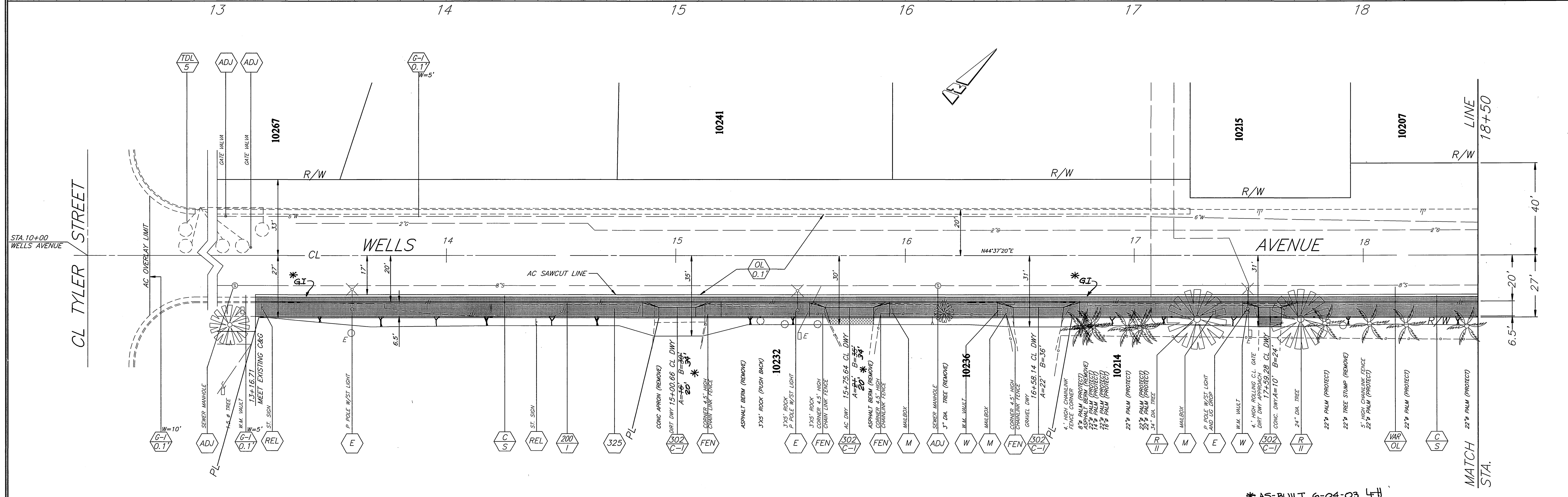
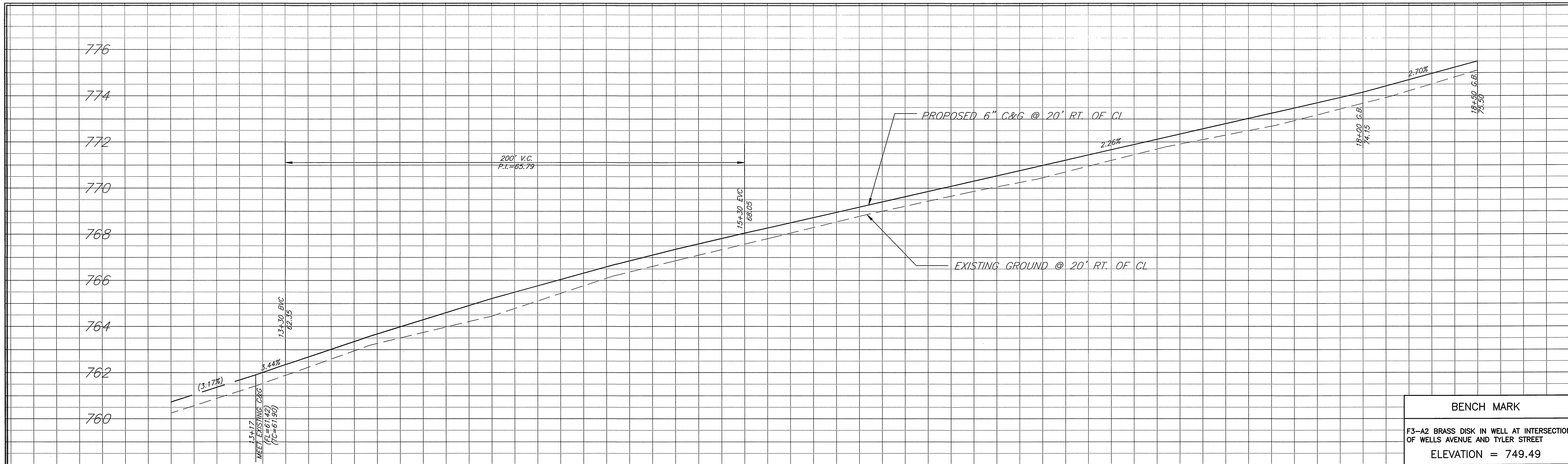
CURB FACE GRINDING DETAIL
AT WHEELCHAIR RAMP
N.T.S.



PROJECT LOCATION MAP
NOT TO SCALE

	ENGINEER IN RESPONSIBLE CHARGE PHILIP L. HANNAWI R.C.E. No. 44747 expires 3/31/02 DATE 01/18/02		CITY OF RIVERSIDE, CALIFORNIA PUBLIC WORKS DEPARTMENT		WELLS AVENUE WIDENING	ACCT. NO. 9539427152-440223
	APPROVED BY: DEPUTY P.W. DIRECTOR TRAFFIC DIVISION PAVEMENT DEPARTMENT INSPECTOR SURVEYOR STREET SERVICES		BY DATE PH 5/10/02 PH 5/10/02 PH 5/10/02 PH 5/10/02 PH 5/10/02 PH 5/10/02		APPROVED BY: WELLS AVENUE WIDENING DATE: 5/10/02	R-3624 SHEET 1 OF 4 PC-6074-S/P

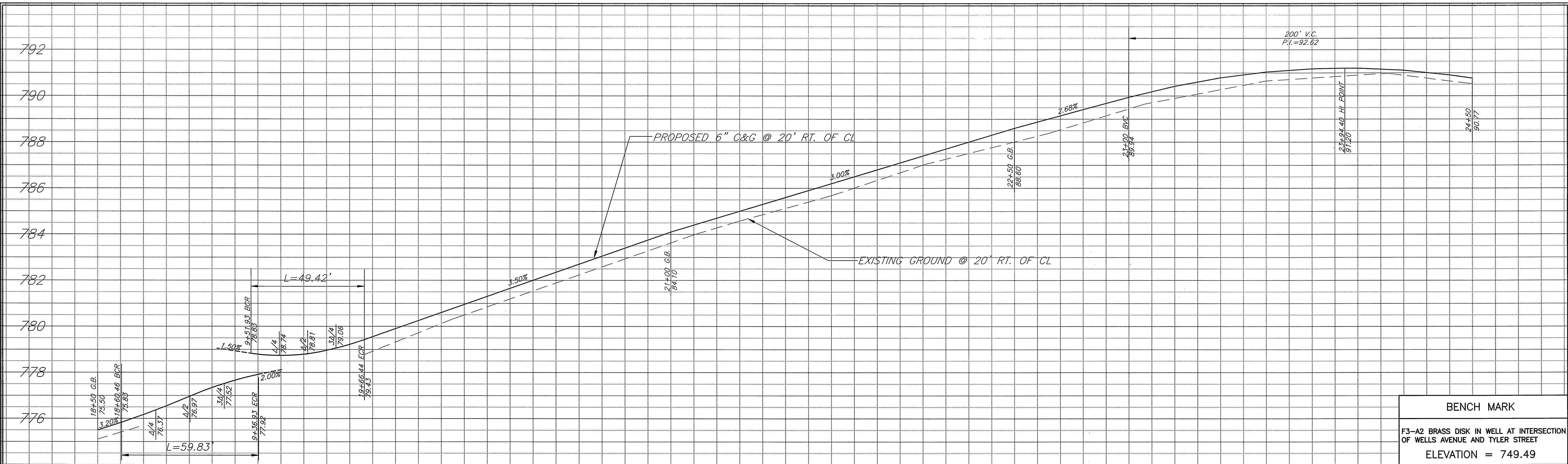
* AS-BUILT 6-04-03 LPH



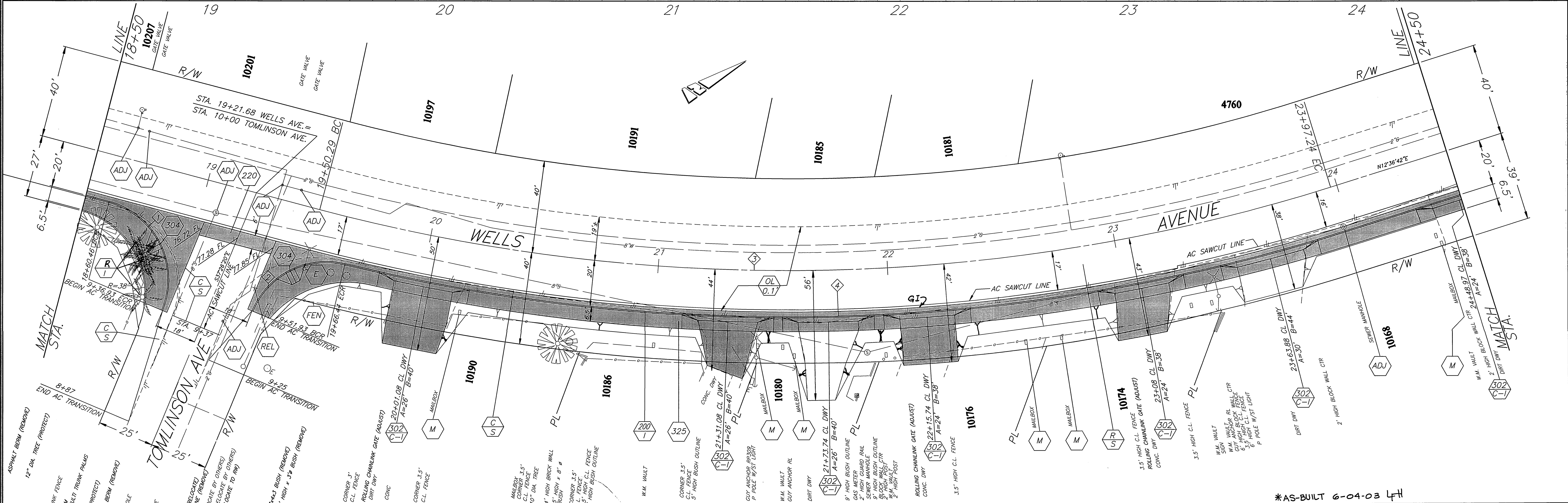
* AS-BUILT 6-04-03 LTH

<p>ENGINEER IN RESPONSIBLE CHARGE Philip L. Hannawi PHILIP L. HANNAWI R.C.E. No. 44747 expires 3/31/02 DATE 01/18/02</p>	<p>CITY OF RIVERSIDE, CALIFORNIA PUBLIC WORKS DEPARTMENT</p>		<p>ACCT. NO. 9539427152-4402230X R-3624</p>
	<p>APPROVED BY: <i>Tom Beard</i> DEPUTY P.W. DIRECTOR PRINCIPAL ENGINEER TRAFFIC DIVISION PARKS DEPARTMENT INSPECTION SURVEYOR STREET SERVICES</p>	<p>BY: <i>[Signature]</i> DATE: 5/10/02</p>	<p>APPROVED BY: <i>Tom Beard</i> INTERIM PUBLIC WORKS DIRECTOR</p>

INDEXED 7-22-02 LTH



BENCH MARK
 F3-A2 BRASS DISK IN WELL AT INTERSECTION
 OF WELLS AVENUE AND TYLER STREET
 ELEVATION = 749.49



- ASPHALT BERM (REMOVE)
- 12" DIA. TREE (PROTECT)
- 5' CHAMBLINK FENCE
- 18" DIA. PPM
- 3"-18" DIA. W/IN TRUNK PALMS
- 24" DIA. PPM (PROTECT)
- 22" DIA. PPM
- ASPHALT BERM (REMOVE)
- SEWER MANHOLE
- WATER GATE VALVE
- ST. WALK SIGN PL (RELOCATED)
- 6" HIGH BUSH OUTLINE (REMOVE)
- GUY ANCHOR PL (RELOCATE BY OTHERS)
- GUY ANCHOR PL (RELOCATE BY OTHERS)
- 3" HIGH CL. FENCE (RELOCATE BY OTHERS)
- 4" HIGH CL. FENCE (RELOCATE BY OTHERS)
- P. POLE W/ST LIGHT
- 3"x4" BUSH (REMOVE)
- 2" HIGH x 3/8" BUSH (REMOVE)

CURVE DATA				
Station	R	Δ	L	T
1	35'	97°56'20"	59.83'	40.22'
2	35'	80°54'16"	49.42'	29.84'
3	800'	32°00'38"	446.95'	229.48'
4	820'	30°51'14"	441.57'	226.28'

ENGINEER IN RESPONSIBLE CHARGE
Philip L. Hannawi
 PHILIP L. HANNAWI
 R.C.E. No. 44747 expires 3/31/02
 DATE 01-18-02



CITY OF RIVERSIDE, CALIFORNIA
 PUBLIC WORKS DEPARTMENT

APPROVED BY: *[Signature]* DATE: 5/10/02
 DEPUTY P.W. DIRECTOR
 TRAFFIC DIVISION
 TRAFFIC ENGINEER
 SUPERVISOR
 STAFF SERVICES

*AS-BUILT 6-04-03 LPH

WELLS AVENUE
 WIDENING
 BETWEEN TYLER STREET
 AND CREST AVENUE

ACCT. NO. 9539427152-440223XX
R-3624
 SHEET 3 OF 4
 PC-6074-S/P

HORIZ. SCALE: 1" = 20' VERT. SCALE: 1" = 2'

INDEXED 7-22-02 LPH

