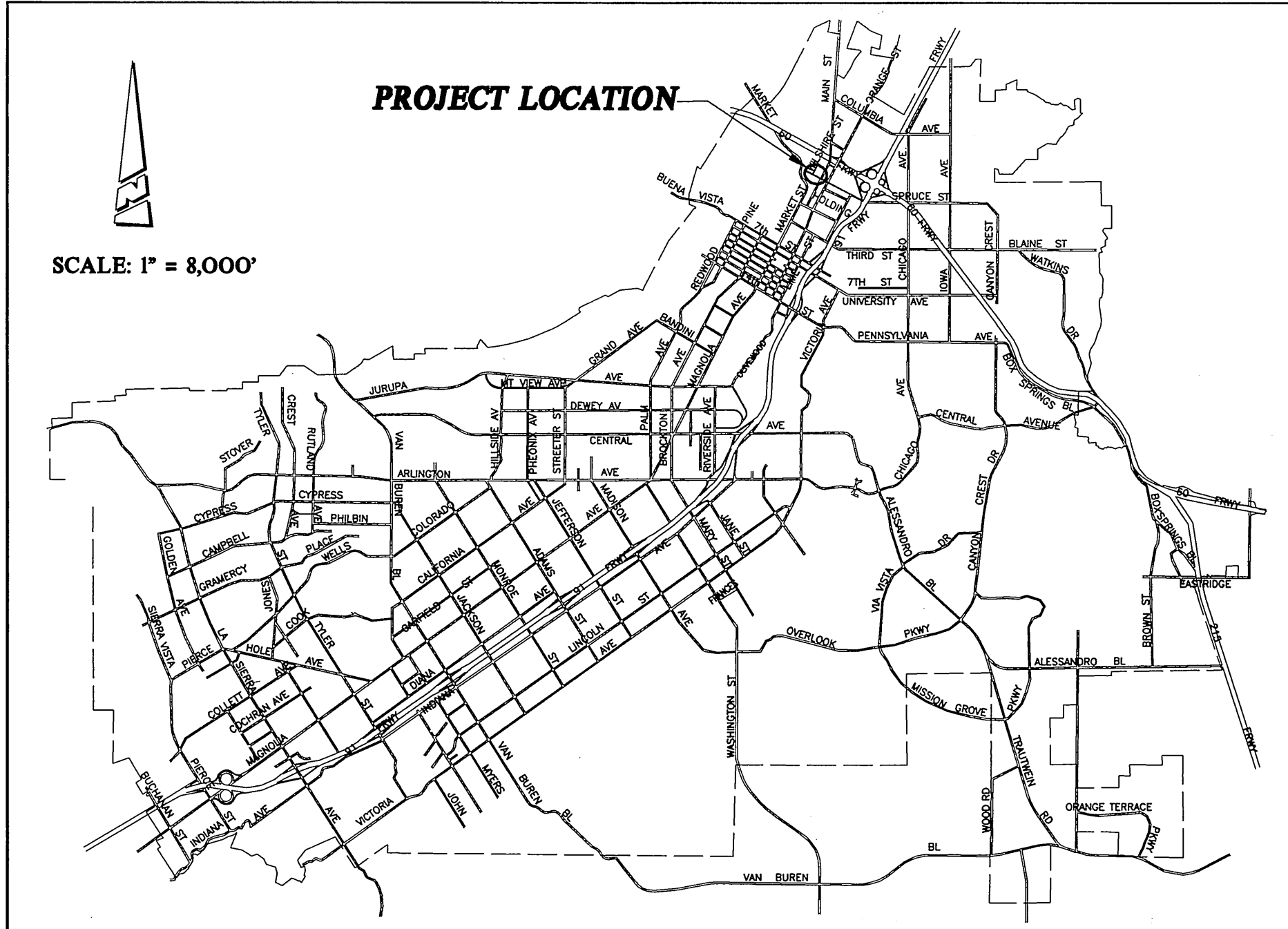


RIVERSIDE CALIFORNIA

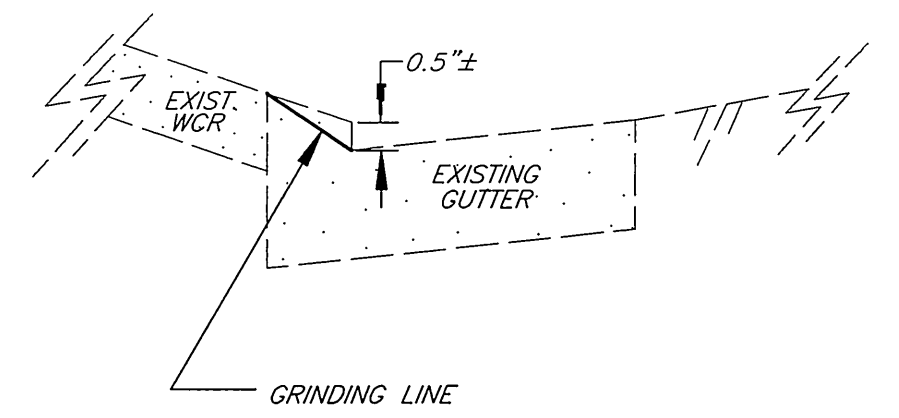
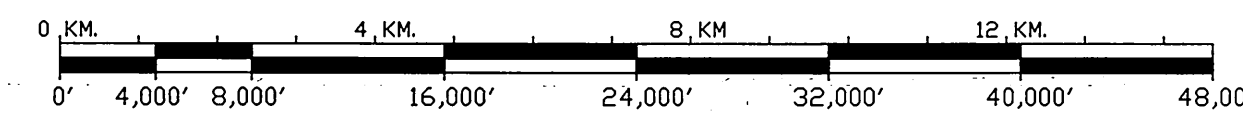
PUBLIC WORKS DEPARTMENT

SPRUCE STREET/WILSHIRE STREET SIDEWALK CONSTRUCTION

(2001-2002 CDBG)

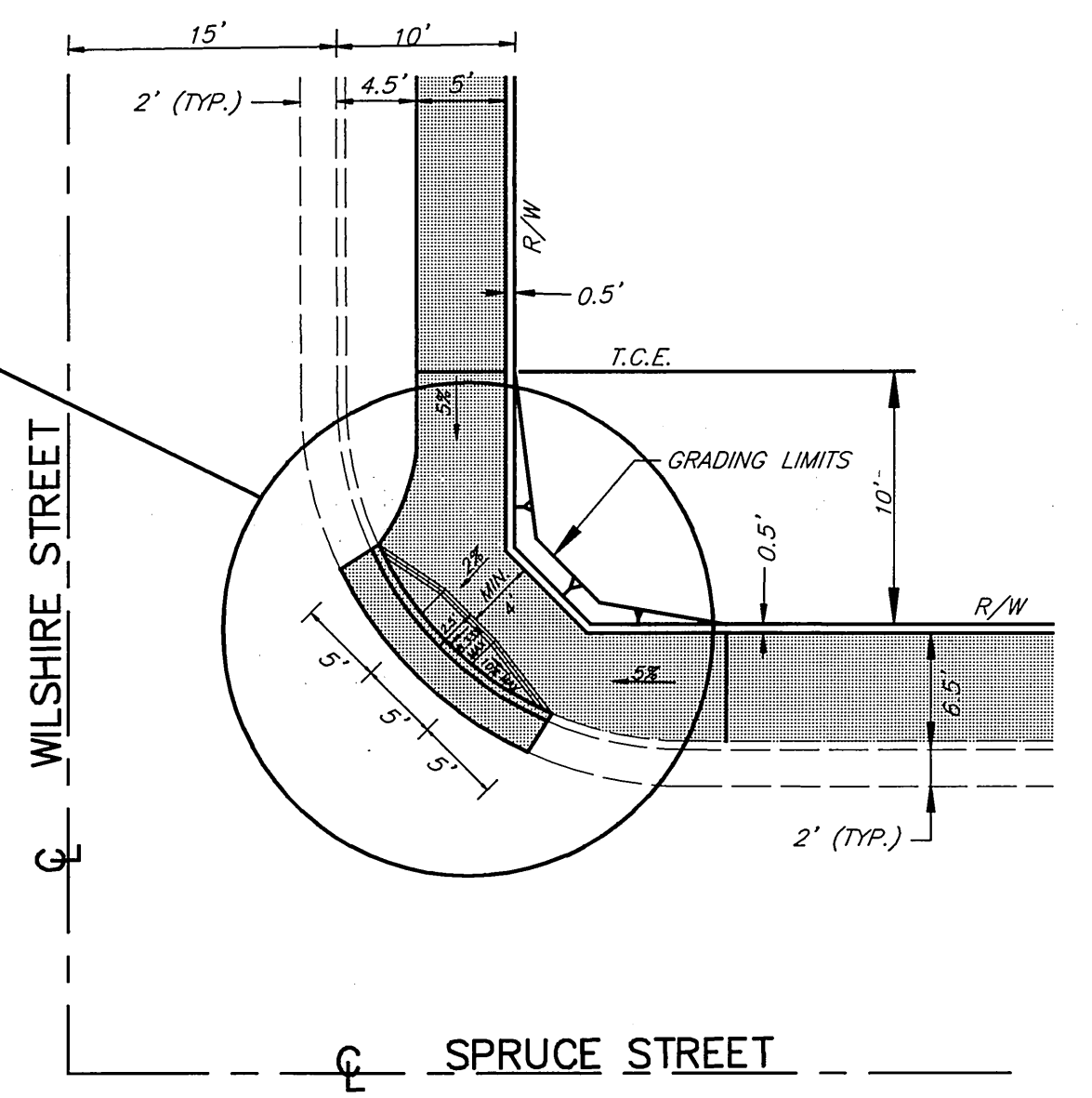
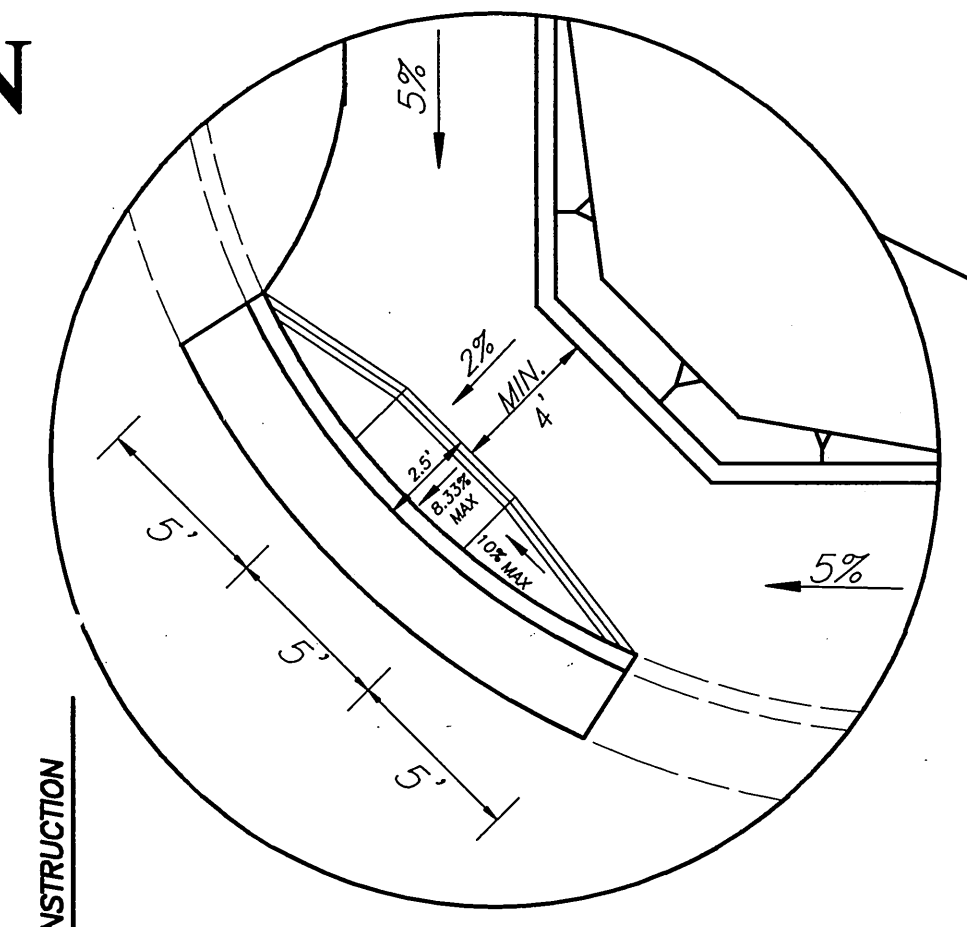


PROJECT LOCATION MAP



CURB FACE GRINDING DETAIL AT WHEELCHAIR RAMP (NTS)

NOTE:
IN LIEU OF WHEELCHAIR RAMP CURB FACE GRINDING, CONTRACTOR MAY REMOVE AND REPLACE AT EACH RAMP APPROXIMATELY 12' OF EXISTING CURB AND GUTTER OR AS DIRECTED BY THE ENGINEER. CURB FACE AT RAMP SHALL BE (0) INCH.



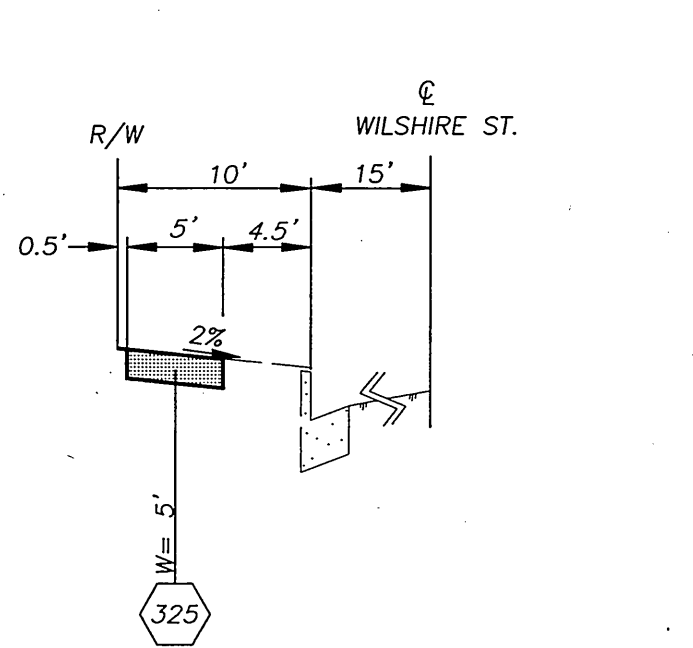
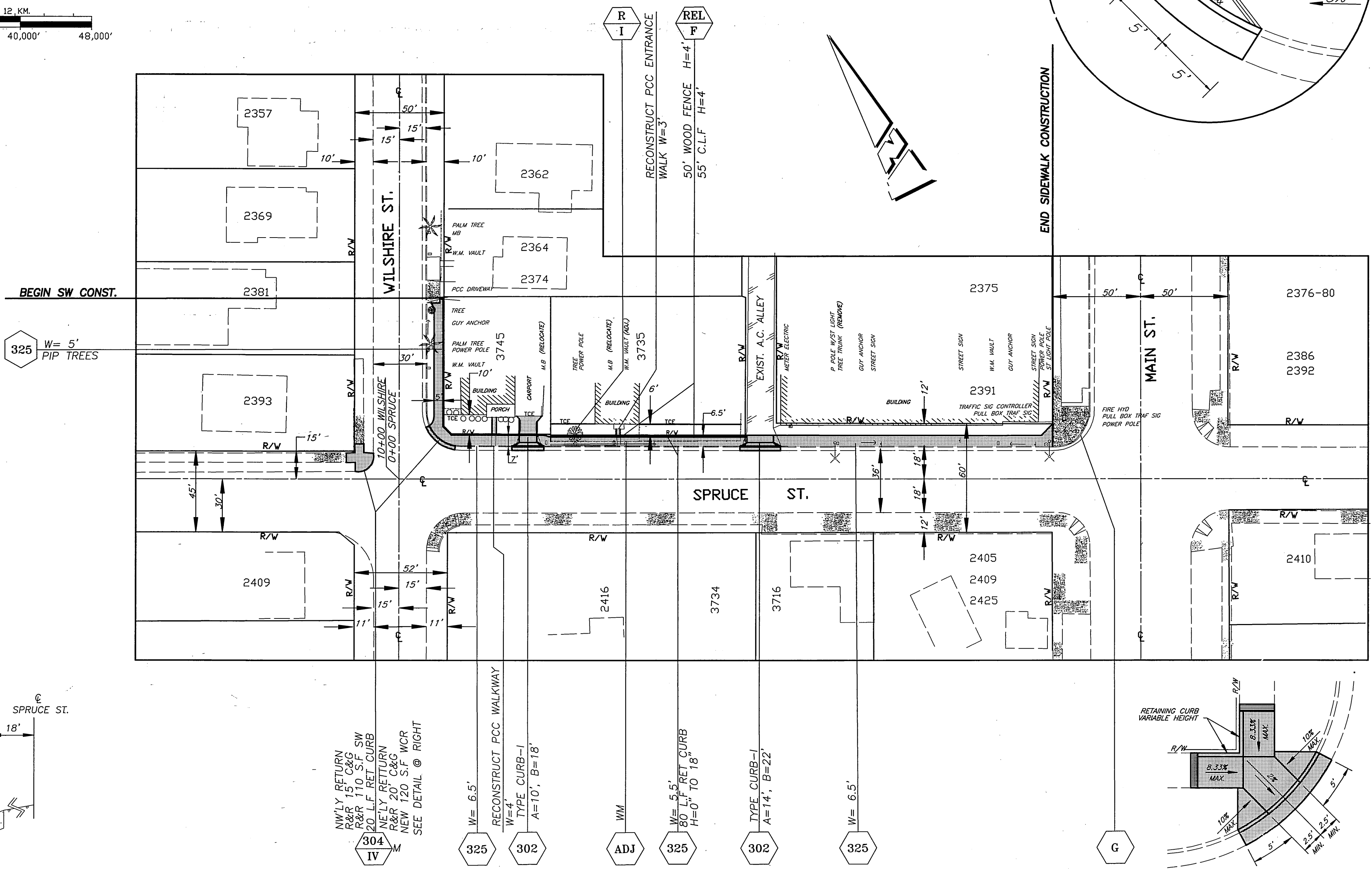
MODIFIED STD. DWG. 304 - TYPE IV AT NORTHEAST CORNER OF WILSHIRE ST & SPRUCE ST (NTS)

GENERAL CONSTRUCTION NOTES

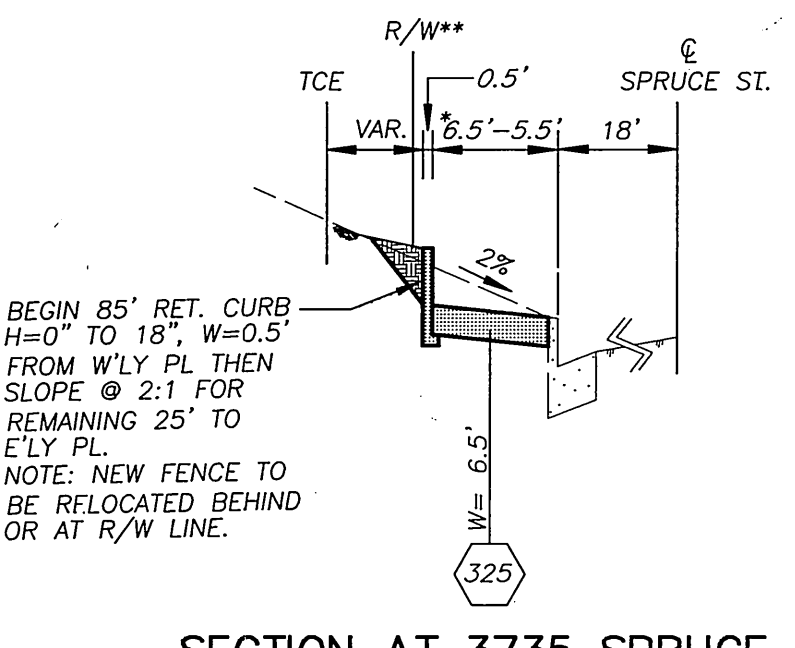
- EXISTING UTILITIES, SHOWN ON THIS PLAN, ARE PLOTTED FROM UTILITY RECORDS. THE CONTRACTOR IS REQUIRED TO TAKE DUE PRECAUTIONARY MEASURES TO LOCATE AND PROTECT ALL UTILITIES WHETHER OR NOT SHOWN ON THIS PLAN. THE UTILITY IS NOT EXPECTED TO CONFLICT WITH THE PROPOSED IMPROVEMENTS.
- PRIME CONTRACTORS BIDDING THIS WORK SHALL HAVE A CLASS A OR C-B LICENSE.
- CONFLICTING UTILITIES, IF ANY, WITHIN CONSTRUCTION AREA, SHALL BE RELOCATED PRIOR TO CONSTRUCTION.
- TREES AND SHRUBS, AFFECTED BY THE PROPOSED SIDEWALK CONSTRUCTION, SHALL BE TRIMMED TO AT LEAST 8' VERTICALLY ABOVE THE SIDEWALK SURFACE AND TO AT LEAST 3' LATERALLY OF THE SIDEWALK, WHERE RIGHT-OF-WAY PERMITS.
- MAIL BOXES, INTERFERING WITH PROPOSED SIDEWALK CONSTRUCTION, SHALL BE TEMPORARILY RELOCATED TO ENABLE PROPERTY OWNERS TO RECEIVE THEIR MAIL AND BE REINSTALLED IN FINAL POSITION BY THE CONTRACTOR.
- WATER METERS, GAS METERS AND ALL STREET PULL BOXES AFFECTED BY CONSTRUCTION, SHALL BE ADJUSTED TO THE PROPOSED SIDEWALK GRADE.
- EXISTING SPRINKLERS AND IRRIGATION LINES, AFFECTED BY THE CONSTRUCTION OF THE PROPOSED SIDEWALK, SHALL BE RELOCATED TO THE BACK OF THE SIDEWALK OR MODIFIED TO COVER EXISTING IRRIGATION AREA EXCEPT THE NEW PAVED AREA.
- INSTALL TEMPORARY 6' CHAIN LINK FENCE AT 3735 SPRUCE STREET DURING THE RELOCATION OF EXISTING WOOD FENCE.

SPECIFIC CONSTRUCTION NOTES

- NUMBERS, ABOVE 100 IN A HEXAGON ON THE PLAN, REFER TO THE RESPECTIVE STANDARD DRAWING AND SHALL BE CONSTRUCTED ACCORDINGLY, UNLESS MODIFICATIONS ARE NOTED ON THE PLAN OR COVER SHEET. ANY NUMBER SHOWN BELOW THE STANDARD DRAWING NUMBER INDICATES THE SPECIFIC ALTERNATE TO BE CONSTRUCTED.
- REMOVE EXISTING TREE. CLASS I: 6" TO 18", CLASS II: 18" TO 36", CLASS III: OVER 36".
- RELOCATE EXISTING CHAINLINK AND WOOD FENCE. RECONSTRUCT PCC WALK TO RESIDENCE ENTRANCE.
- CONSTRUCT WHEELCHAIR RAMP PER STD. DWG. 304 OR MODIFIED WHEELCHAIR RAMP SHOWN ON THIS PLAN.
- GRIND CURB FACE AT WHEELCHAIR RAMP PER DETAIL ON THIS PLAN.



TYPICAL SECTION OF WILSHIRE ST. PROPERTY LINE SIDEWALK (NTS)



SECTION AT 3735 SPRUCE ST. CURB LINE SIDEWALK (NTS)

* SIDEWALK WIDTH SHALL BE ADJUSTED TO PROVIDE A MIN. 4' CLEAR PATHWAY AT ANY OBSTRUCTION.
** R/W AND NEW FENCE AT 0.5' BEHIND NEW SIDEWALK

IMPORTANT NOTICE
Section 4216.4217 of the Government Code requires a Dig Alert Identification Number to be issued before a "Permit to Excavate" will be issued. For your Dig Alert ID Number call CALL TOLL FREE 48 HOURS BEFORE YOU DIG UNDERGROUND SERVICE ALERT 1-800-227-2600

ENGINEER IN RESPONSIBLE CHARGE
Ronald C. Mueller
RONALD C. MUELLER
R.C.E. No. 29510 Expires 3/31/2003
DATE 9-5-07

REGISTERED PROFESSIONAL ENGINEER
RONALD C. MUELLER
No. 29510
Exp. 3/31/2003
CIVIL
STATE OF CALIFORNIA

DESIGNED BY	ABE	DRAWN BY	ABE	CHECKED BY	REM
APPROVED BY	REM	DATE	9/10/07	APPROVED BY	REM
DELETED MODIFIED STD DWG. 304	TYPE IV Detail	DATE	7-7-02	APPROVED BY	REM

APPROVED BY	DATE
DEPUTY P.W. DIRECTOR	9/10/07
PRINCIPAL ENGINEER	7-7-02
SUPERVISOR	9/10/07
STREET SERVICES	
TRAFFIC ENGINEER	
PARK & REC. DEP.	

SPRUCE STREET/WILSHIRE STREET	ACCT. NO.: 9216900611-440120XX
SIDEWALK CONSTRUCTION (2001-2002 CDBG)	R-3641
	SHEET 1 OF 1
HORIZ. SCALE: 1" = 40'	FILE: MARE/G:\COMMON\CCDBG\WILSHIRE\R-3641

INDEXED 3-27-03 Lft