

RIVERSIDE CITY OF RIVERSIDE CALIFORNIA

PUBLIC WORKS DEPARTMENT

MISSION GROVE PKWY MEDIAN ISLANDS FROM TRAUTWEIN ROAD TO ALESSANDRO BLVD.

GENERAL CONSTRUCTION NOTES:

- CONSTRUCTION SHALL BE IN ACCORDANCE WITH THE CITY OF RIVERSIDE STANDARD DRAWINGS AND STANDARD SPECIFICATIONS FOR PUBLIC WORKS CONSTRUCTION, 1997 EDITION.
- EXISTING UTILITIES SHOWN ON THE PLANS, ARE PLOTTED FROM UTILITY RECORDS. THE CONTRACTOR IS REQUIRED TO TAKE DUE PRECAUTIONARY MEASURES TO LOCATE AND PROTECT ALL UTILITIES WHETHER OR NOT SHOWN ON THESE PLANS.

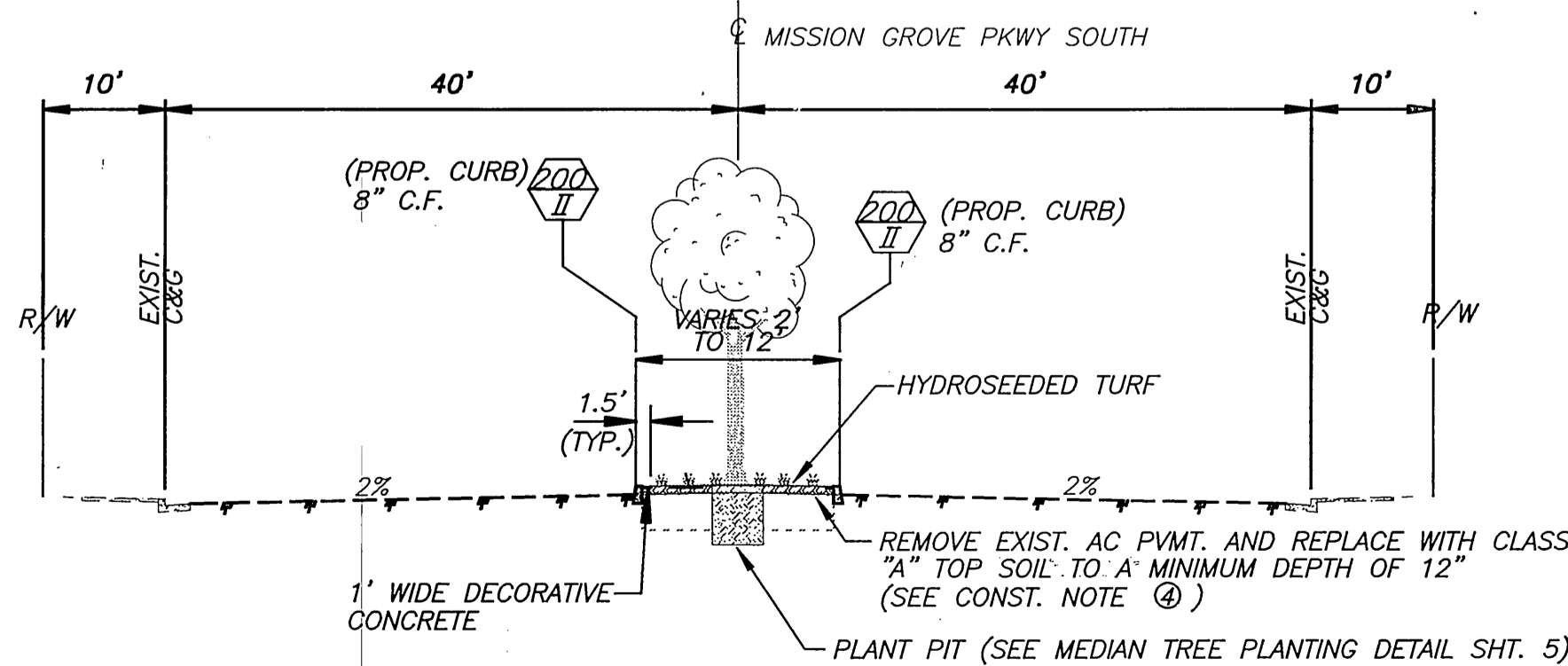
CONSTRUCTION LEGEND:

- NUMBERS ABOVE 100 IN A HEXAGON ON THE PLAN REFER TO THE RESPECTIVE STANDARD DRAWING AND SHALL BE CONSTRUCTED ACCORDINGLY UNLESS MODIFICATIONS ARE NOTED ON THE PLAN. ANY NUMBER SHOWN BELOW THE STANDARD DRAWING NUMBER INDICATES THE SPECIFIC ALTERNATE TO BE CONSTRUCTED.
- CONTRACTOR SHALL INSTALL WATER SERVICE FOR 3/4" WATER METERS PER WESTERN MUNICIPAL WATER DISTRICT STD. DWG. NO. W-0070, SUBJECT TO THE APPROVAL AND INSPECTION OF THE WESTERN MUNICIPAL WATER DISTRICT (WESTERN MUNICIPAL WATER DISTRICT TO SUPPLY AND INSTALL THE METERS).
- INSTALL 2" DIAMETER PVC SCHEDULE 40 SLEEVING, EXTENDING 1' INTO PLANTING AREA OF MEDIAN, WITH A MINIMUM OF 24" COVER, TERMINATING IN BROOKS #3 PULLBOX OR CITY APPROVED EQUAL WITH TRAFFIC COVER AT EACH END, FOR IRRIGATION CONTROL WIRES.
- INSTALL 3" DIAMETER PVC SCHEDULE 40 SLEEVING, EXTENDING 1' INTO PLANTING AREA OF MEDIAN, 24" COVER, FOR IRRIGATION SUPPLY LINES.

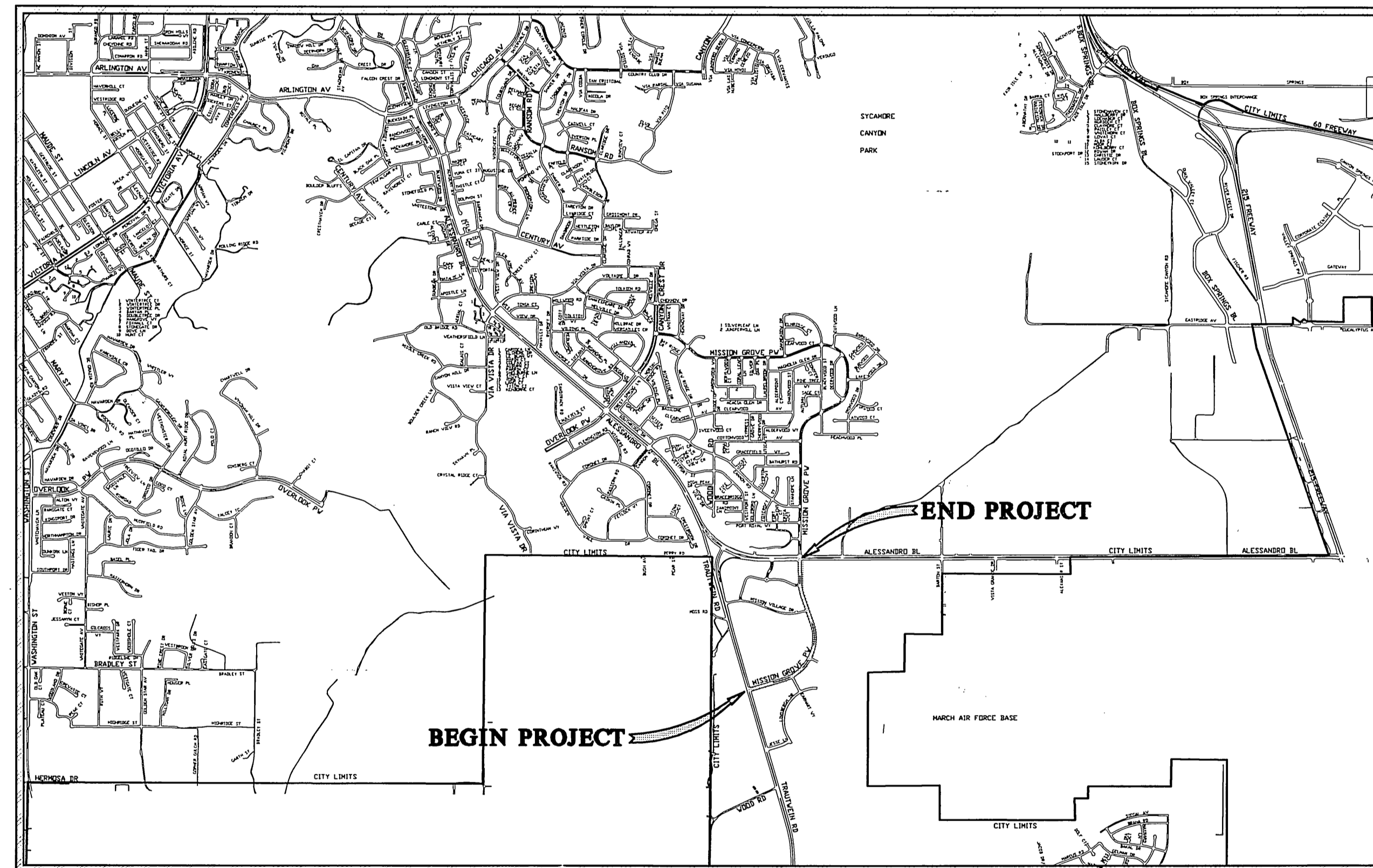
GENERAL NOTES FOR PUBLIC LANDSCAPES:

- ALL RELATED WORK SHALL CONFORM TO THE CITY OF RIVERSIDE PARK AND RECREATION DEPARTMENT STANDARDS AND SPECIFICATIONS FOR PLANTING AND IRRIGATION WORK. (SPECIFICATIONS SECTION 02441 AND 02480).
- WHEN CALLING FOR INSPECTIONS CONTACT THE ENGINEER A MINIMUM OF 72 HOURS IN ADVANCE AT (909) 826-5889 TO SCHEDULE AN INSPECTION. A FIELD NOTICE WILL BE ISSUED AS WRITTEN APPROVAL FOR EACH STAGE OF INSPECTION. A VERBAL APPROVAL WILL NOT BE ACCEPTABLE. INSPECTIONS ARE REQUIRED PER THE STANDARD SPECIFICATION, AND INCLUDE BUT ARE NOT NECESSARILY LIMITED TO THE FOLLOWING:
 - AFTER COMPLETION OF FINAL GRADING OF THE MEDIAN AND WHEN ALL UTILITY SERVICES AND SEWER LATERALS HAVE BEEN MARKED, BUT PRIOR TO INITIATING ANY LANDSCAPE WORK WITHIN THE PUBLIC RIGHT OF WAY;
 - AT TIME OF INSTALLATION OF IRRIGATION SYSTEMS AND CONSTANT PRESSURE MAINLINES, BUT PRIOR TO BACKFILL OF TRENCHES FOR SAME (NOTE: MAINLINES MUST BE PRESSURE TESTED IN THE PRESENCE OF THE PARK PROJECTS INSPECTOR);
 - AT TIME OF INSTALLATION OF IRRIGATION VALVES, LATERALS AND HEADS;
 - FOR SPOTTING OF ALL TREES PRIOR TO DIGGING PLANTING PITS;
 - WHILE DIGGING PLANT PITS AND PLANTING/RELOCATING TREES;
 - AFTER PLANTING AND ALL OTHER INDICATED OR SPECIFIED WORK HAS BEEN COMPLETED, FOR START OF MAINTENANCE;
 - AT SUBSTANTIAL COMPLETION OF THE PROJECT FOR CITY'S ACCEPTANCE TO START THE REQUIRED MAINTENANCE PERIOD;
 - AT THE END OF THE MAINTENANCE PERIOD, THE CONTRACTOR SHALL CALL THE ENGINEER AT (909) 826-5889 FOR A FINAL ACCEPTANCE INSPECTION IN ORDER TO BE RELEASED FROM MAINTENANCE. CONTRACT BONDS WILL NOT BE RELEASED UNTIL AFTER RECEIPT OF WRITTEN NOTIFICATION FROM THE CITY THAT THE PROJECT HAS PASSED FINAL ACCEPTANCE INSPECTION AND THE CITY IS ASSUMING MAINTENANCE RESPONSIBILITIES.
- THE CONTRACTOR SHALL BE RESPONSIBLE TO MAINTAIN ALL PLANTINGS FOR A MINIMUM PERIOD OF ONE YEAR (365 CALENDAR DAYS).

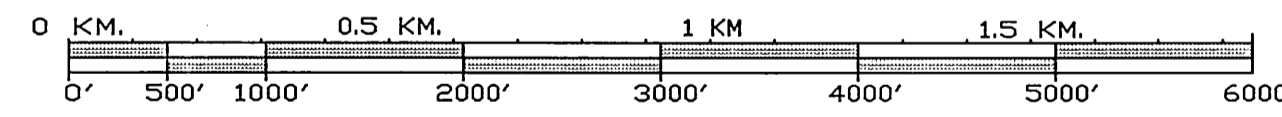
NOTE: IN THE INTEREST OF PUBLIC SAFETY AND MAINTENANCE, THE ENGINEERING INSPECTOR SHALL HAVE THE AUTHORITY TO REVISE THE TREE QUANTITIES AND LOCATIONS SHOWN OF APPROVED PLANS BASED UPON FIELD CONDITIONS FOUND AT THE TIME OF INSTALLATION OF THE TREES.



PROPOSED MEDIANS ON MISSION GROVE PKWY SOUTH FROM TRAUTWEIN ROAD TO ALESSANDRO BOULEVARD TYPICAL SECTION



PROJECT LOCATION MAP



SCALE: 1" = 1,000'

EXISTING UNDERGROUND UTILITIES:

SANITARY SEWER	8" S	TELEPHONE CONDUIT	T
WATER LINE	6" W	ELECTRICAL CONDUIT	E
STORM DRAIN	24" SD	ELECTROLIER LIGHTING CONDUIT	ELC
GAS LINE	3" G	TRAFFIC SIGNAL	SIG
ABANDONED UTILITY	6" G (ABAND'D.)	FIRE ALARM	F

EXISTING TOPOGRAPHY:

BLOCK WALL	POLE & GUY ANCHOR	PEDESTRIAN PUSH BUTTON
BOARD FENCE	POWER POLE	RAILROAD TRACKS
WIRE FENCE	TELEPHONE POLE	RAILROAD SIGN
CHAIN LINK FENCE	TELEPHONE RISER	RAILROAD SIGNAL
SANITARY SEWER M.H.	JOINT USE POLE	TRAFFIC SIGNAL
SANITARY SEWER CLEANOUT	PULL BOX	TRAFFIC SIGNAL ON MAST ARM
STORM DRAIN M.H.	TRAFFIC SIGN	TRAFFIC SIGNAL CONTROLLER
IRRIGATION WEIR	PARKING METER	TRAFFIC SIGNAL LOOP DETECTOR
WATER M.H.	FIRE ALARM BOX	STREET LIGHT & TRAFFIC SIGNAL ON MAST ARM
GAS M.H.	STREET NAME SIGN	STREET LIGHT (UPRIGHT)
ELECTRIC M.H.	GAS METER	STREET LIGHT ON MAST ARM
TELEPHONE M.H.	MAIL BOX	STEEL POST
WATER METER	FAUCET	WOOD POST
FIRE HYDRANT	WALK-DON'T WALK PEDESTRIAN SIGNAL	
SPRINKLER HEAD	ELECTRICAL TEST STATION	
VALVE	WHEEL STOP	
AIR VALVE	A.C. BERM	
AIR VENT		
BUS STOP SIGN		
BLOW-OFF VALVE		
IRRIGATION STAND PIPE		
CONCRETE		
ASPHALT		
BUILDING		
EDGE OF PAVEMENT		

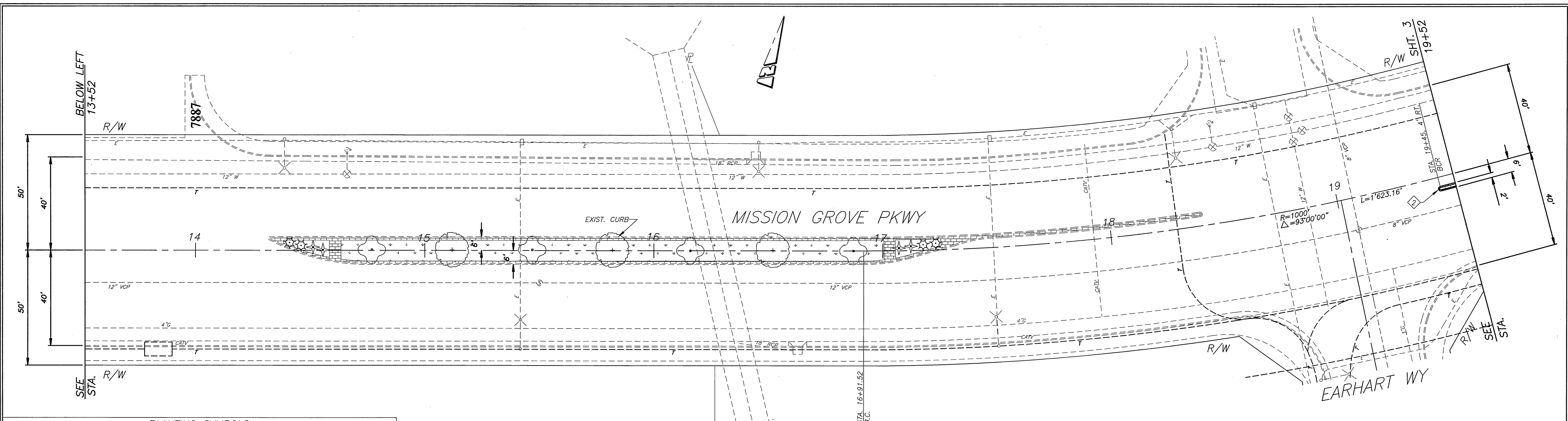
CONSTRUCTION NOTES:

- ALL IRRIGATION LINES TO BE INSTALLED UNDER HARDSCAPE AREAS SHALL BE INSTALLED IN SCHEDULE 40 PVC SLEEVES. SLEEVE SIZE SHALL BE TWICE THE DIAMETER OF THE IRRIGATION PIPE SIZE (MIN.).
- ALL IRRIGATION CONTROL WIRES TO BE INSTALLED UNDER HARDSCAPE AREAS SHALL BE INSTALLED IN SCHEDULE 40 PVC SLEEVES (MIN.).
- ALL IRRIGATION VALVES, BALL VALVES, QUICK COUPLERS AND BOXES ARE TO BE LOCATED IN PLANTING AREAS.
- REMOVE EXIST. STRUCTURAL SECTION BETWEEN PROPOSED CURBS AND FILL WITH CLEAN EARTHEN MATERIAL TO ±1" BELOW PROPOSED T.C. ELEVATION COMPACTED TO 85% RELATIVE COMPACTION AT PLANTING AREAS & 95% RELATIVE COMPACTION BENEATH DECORATIVE PAVEMENT. ALLOW FOR SOIL AMENDMENTS PER SECTION 02480.

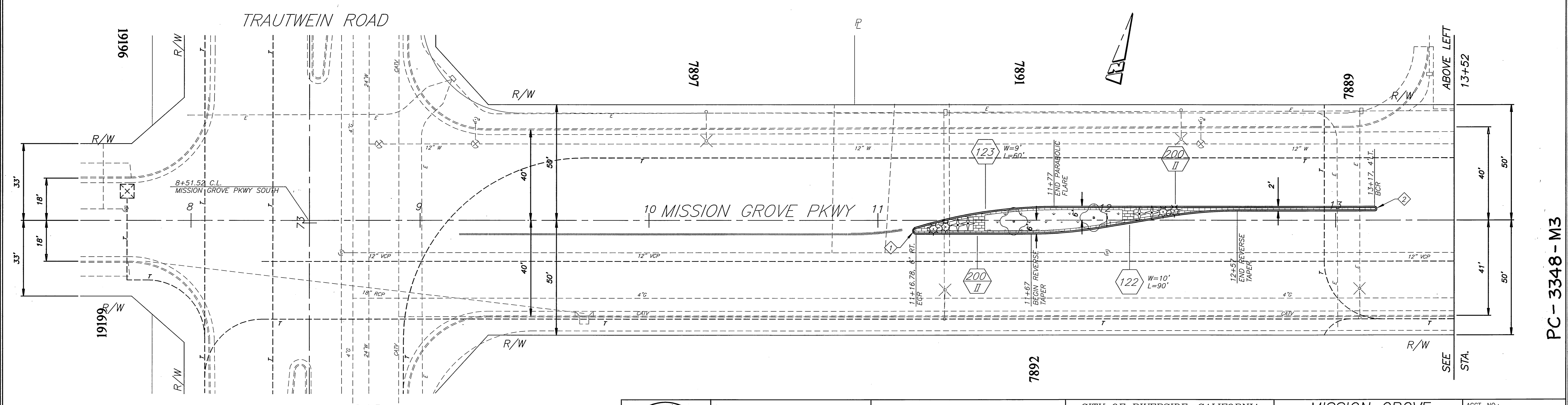
SHEET INDEX:

SHEET NO.	DESCRIPTION
1	TITLE SHEET & TYPICAL STREET SECTION
2-5	STREET IMPROVEMENT AND LANDSCAPING PLANS.

PARK & RECREATION DEPARTMENT APPROVED BY: [Signature] DATE: 09/30/02		WESTERN MUNICIPAL WATER DISTRICT APPROVED BY: [Signature] DATE: 5/29/02	
ENGINEER IN RESPONSIBLE CHARGE MICHAEL KATUSIAN R.C.E. No. 36686 expires 06/30/04 DATE: 5/29/02		CITY OF RIVERSIDE, CALIFORNIA PUBLIC WORKS DEPARTMENT APPROVED BY: [Signature] DATE: 5/29/02 DEPUTY PUBLIC WORKS ENGR. [Signature] TRAFFIC DIVISION [Signature] STREET SERVICES [Signature] INSPECTION [Signature] DATE: 5/29/02	
PROJECT: MISSION GROVE PARKWAY FROM TRAUTWEIN ROAD TO ALESSANDRO BOULEVARD		ACCT. NO.: 7010060-455030 R-3651 SHEET 1 OF 7 FILE NO.	



PLANTING SYMBOLS			
ITEM	SYMBOL	ITEM	SYMBOL
FERN PINE		COMPACT INDIA HAWTHORNE	
T-1		"BALLERINA" S-2	
CRAPE MYRTLE		DWARF LILY OF THE NILE	
T-2		"PETER PAN" S-3	
WHEELER'S DWARF TOBIRA S-1		DAY LILY	
HYDROSEEDED TURF		HEMEROCALLIS S-4	
H-1			



CURVE DATA				
Δ	R	L	T	
1	163'18'3"	1.5'	4.27'	10.22'
2	180'00'00"	1'	3.14'	



ENGINEER IN RESPONSIBLE CHARGE
Michael Katusian
 MICHAEL KATUSIAN
 R.C.E. No. 36886 expires 06/30/04
 DATE 5/29/02

MARK	REVISIONS	APPR.	DATE

DESIGNED BY *CSS* DRAWN BY *LFH* CHECKED BY

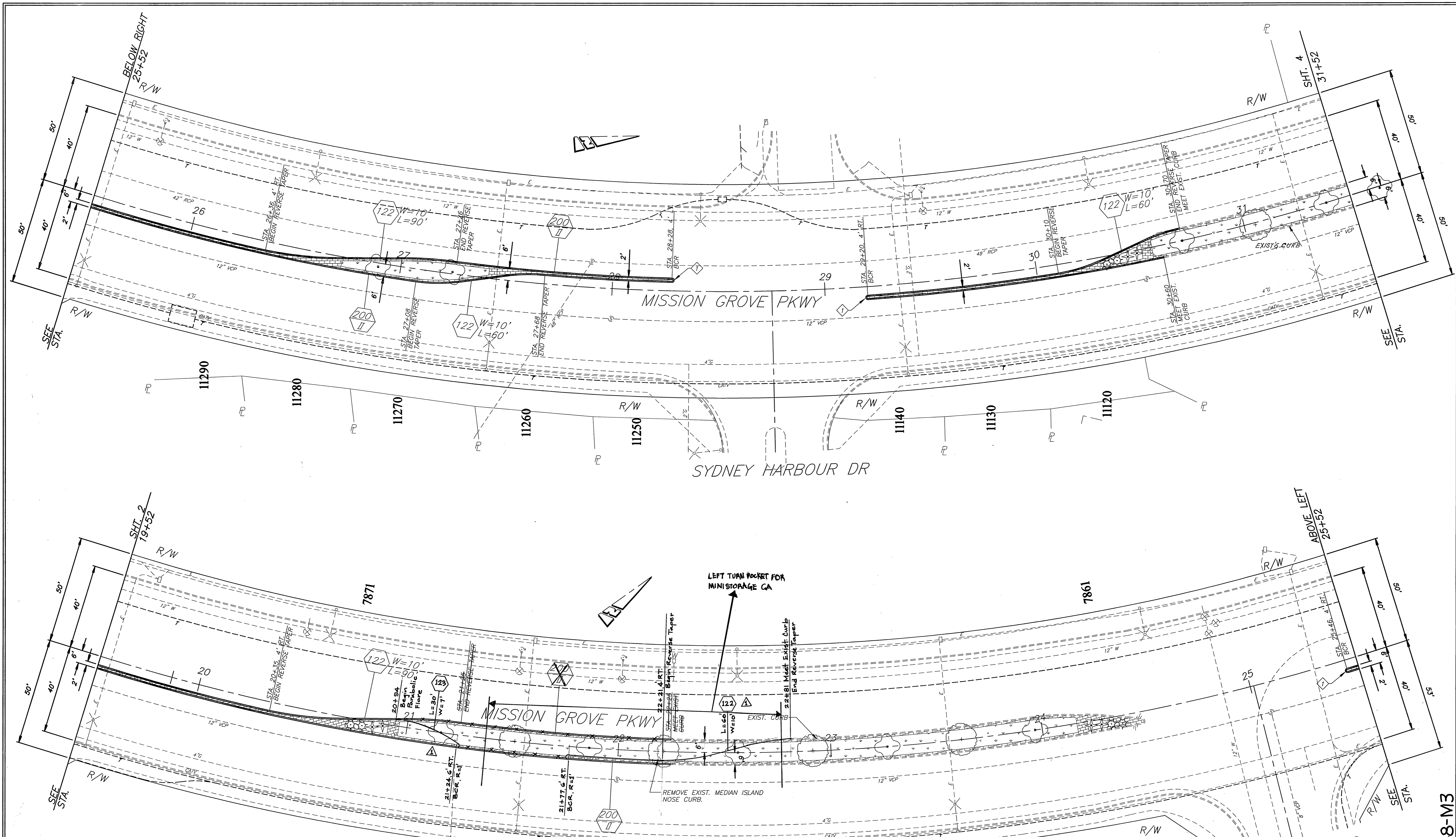
CITY OF RIVERSIDE, CALIFORNIA
 PUBLIC WORKS DEPARTMENT

APPROVED BY: *Tom Boal*
 ENGINEERING MANAGER
 PRINCIPAL ENGINEER
 TRAFFIC DIVISION
 STREET SERVICES
 INSPECTION
 DATE 5/30/02

MISSION GROVE PARKWAY
 MEDIAN ISLANDS
 FROM TRAUTWEIN ROAD TO
 ALESSANDRO BOULEVARD

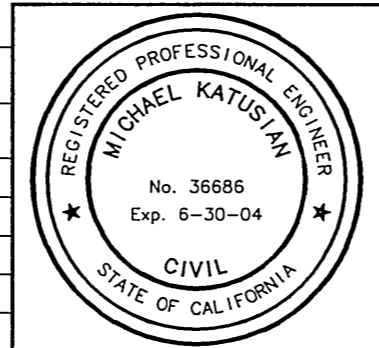
HORIZ. SCALE: 1" = 20' VERT. SCALE:

ACCT. NO.: 7010060-455030
 R-3651
 SHEET 2 OF 7
 FILE NO.



PLANTING SYMBOLS			
ITEM	SYMBOL	ITEM	SYMBOL
FERN PINE		COMPACT INDIA HAWTHORNE	
T-1		"BALLERINA" S-2	
GRAPE MYRTLE		DWARF LILY OF THE NILE	
T-2		"PETER PAN" S-3	
WHEELER'S DWARF TOBIRA		DAY LILY	
S-1		HEMEROCALLIS S-4	
HYDROSEEDED TURF			
H-1			

CURVE DATA				
Δ	R	L	T	
1	180'00"00"	1'	3.14'	



ENGINEER IN RESPONSIBLE CHARGE
Michael Katousian
 MICHAEL KATOUSIAN
 R.C.E. No. 36686 expires 06/30/04
 DATE 8/29/02

Added Parabolic Flare and Reverse Taper
 DESIGNED BY *CSS* DRAWN BY *LPH* CHECKED BY

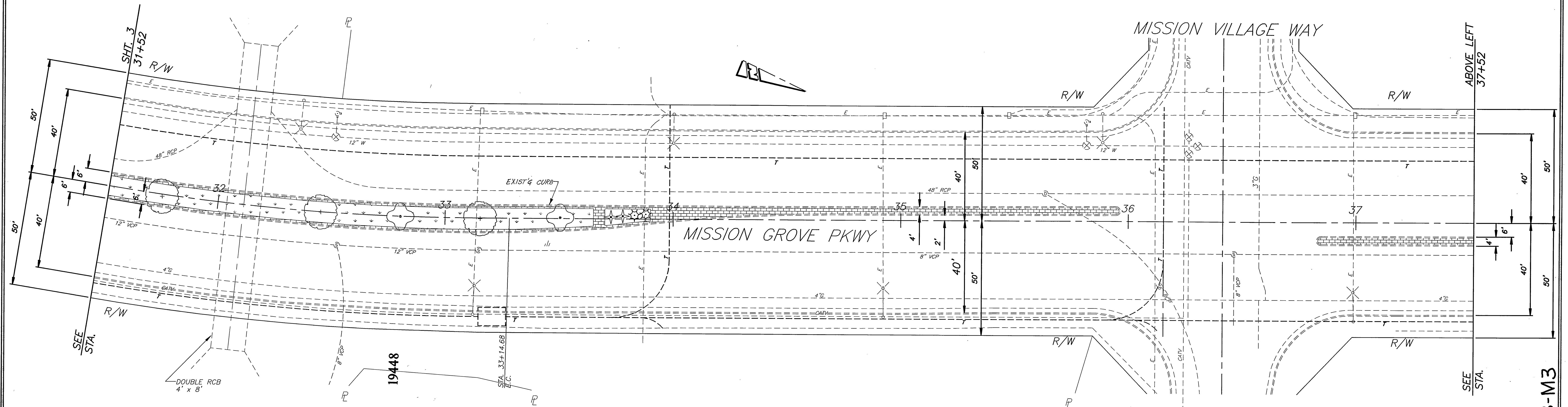
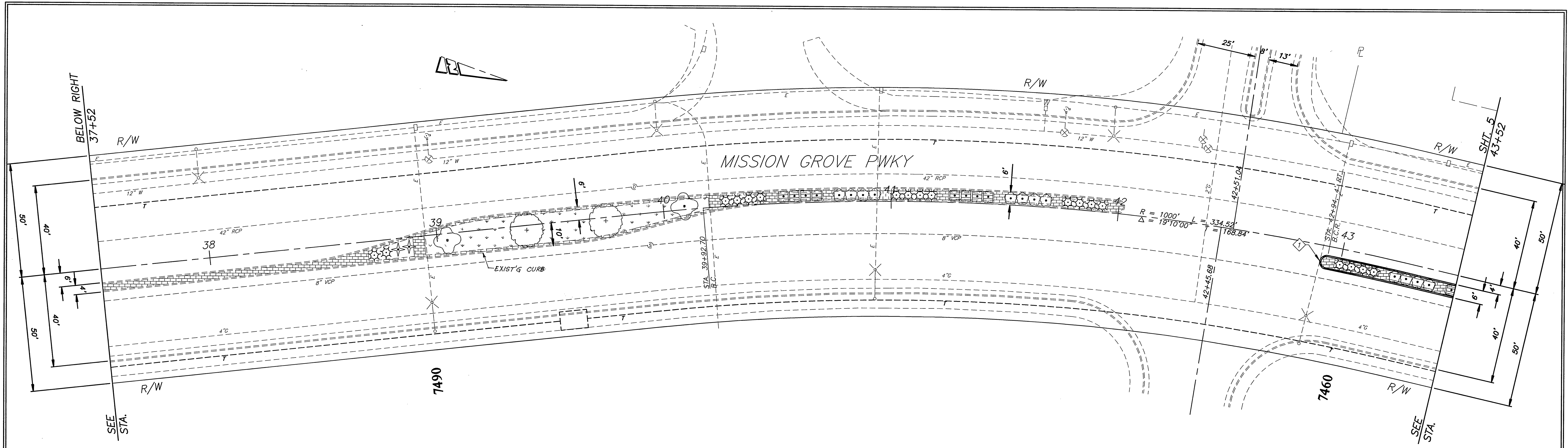
CITY OF RIVERSIDE, CALIFORNIA
 PUBLIC WORKS DEPARTMENT
 APPROVED BY: *John Boyd*
 ENGINEERING MANAGER
 TRAFFIC DIVISION
 STREET SERVICES
 INSPECTION
 DATE 8/29/02

MISSION GROVE PARKWAY
 MEDIAN ISLANDS
 FROM TRAUTWEIN ROAD TO
 ALESSANDRO BOULEVARD
 HORIZ. SCALE: 1" = 20' VERT. SCALE:

ACCT. NO.: 7010060-455030
 R-3651
 SHEET 3 OF 7
 FILE NO.

PC-3348-M3

INDEXED 8-14-03 4H



PLANTING SYMBOLS			
ITEM	SYMBOL	ITEM	SYMBOL
FERN PINE T-1		COMPACT INDIA HAWTHORNE "BALLERINA" S-2	
GRAPE MYRTLE T-2		DWARF LILY OF THE NILE "PETER PAN" S-3	
WHEELER'S DWARF TOBIRA S-1		DAY LILY HEMEROCALLIS S-4	
HYDROSEEDED TURF H-1			

CURVE DATA				
Δ	R	L	T	
1	180°00'00"	3'	9.42'	



ENGINEER IN RESPONSIBLE CHARGE
 MICHAEL KATOUSIAN
 R.C.E. No. 36686 expires 06/30/04
 DATE 5/27/02

DESIGNED BY *CSS* DRAWN BY *LPH* CHECKED BY

CITY OF RIVERSIDE, CALIFORNIA
 PUBLIC WORKS DEPARTMENT
 APPROVED BY: *Tom Reed*
 ENGINEERING MANAGER
 TRAFFIC DIVISION
 STREET SERVICES
 INSPECTION
 DATE 5/27/02

MISSION GROVE PARKWAY
 MEDIAN ISLANDS
 FROM TRAUTWEIN ROAD TO
 ALESSANDRO BOULEVARD

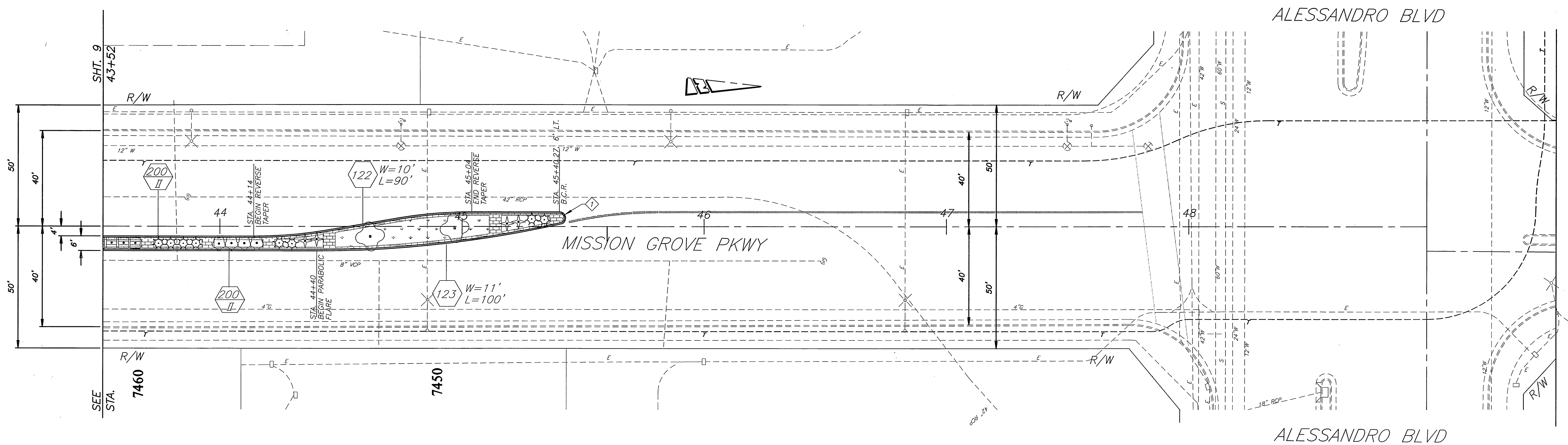
ACCT. NO.: 7010060-455030
 R-3651
 SHEET 4 OF 7
 FILE NO.

AS BUILT 12-11-02

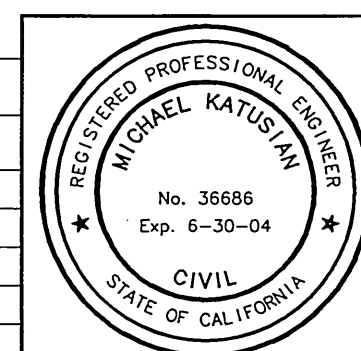
INDEXED 8-14-03 *LFH*

PC-3348-M3

PLANTING SYMBOLS			
ITEM	SYMBOL	ITEM	SYMBOL
FERN PINE T-1		COMPACT INDIA HAWTHORNE "BALLERINA" S-2	
CRAPLE MYRTLE T-2		DWARF LILY OF THE NILE "PETER PAN" S-3	
WHEELER'S DWARF TOBIRA S-1		DAY LILY HEMEROCALLIS S-4	
HYDROSEEDDED TURF H-1			



CURVE DATA				
Δ	R	L	T	
1	167'35"33"	2.5'	7.31'	23.00'



ENGINEER IN RESPONSIBLE CHARGE
Michael Katousian
 MICHAEL KATOUSIAN
 R.C.E. No. 36686 expires 06/30/04
 DATE 5/29/02

MARK	REVISIONS	APPR.	DATE

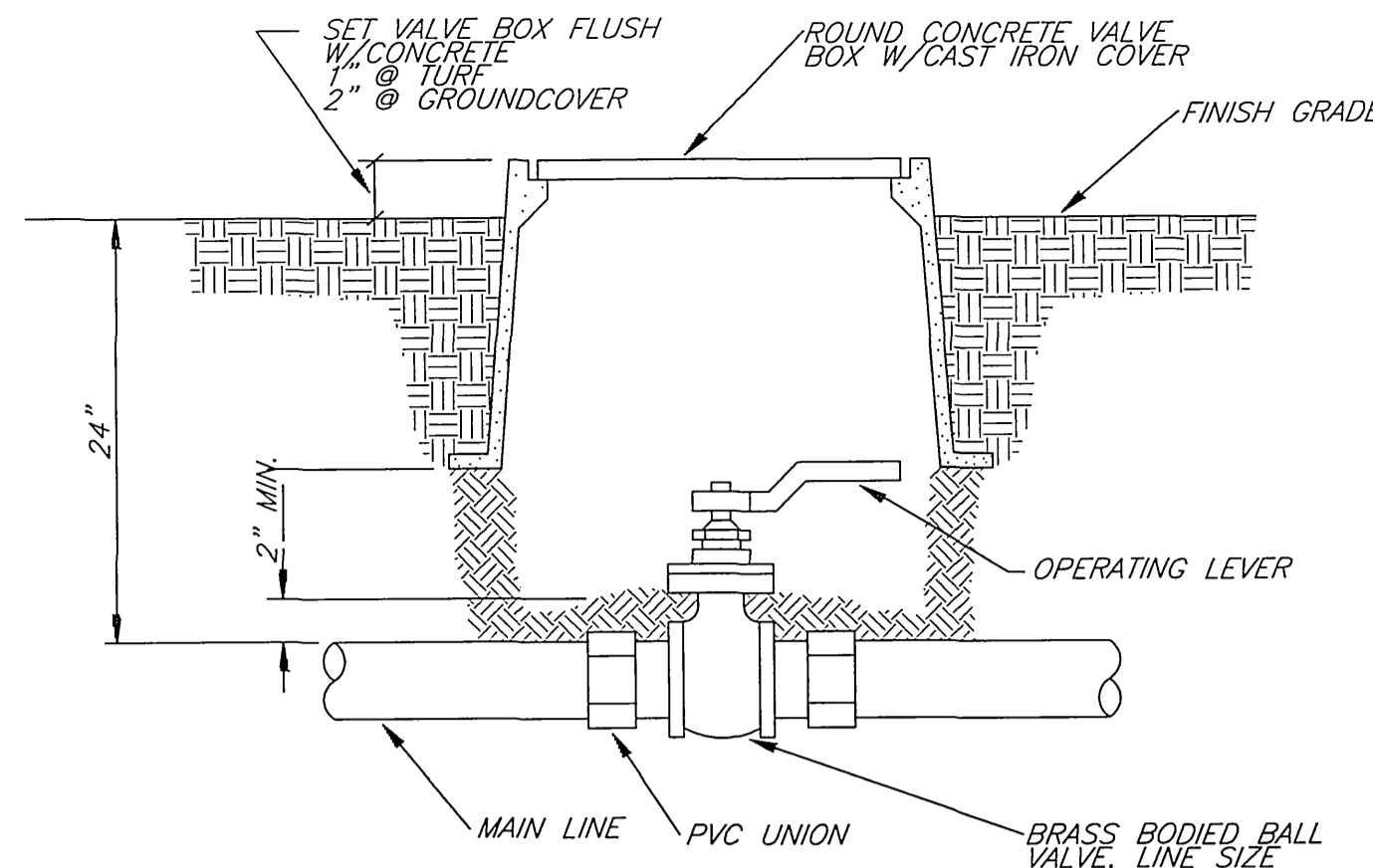
CITY OF RIVERSIDE, CALIFORNIA
 PUBLIC WORKS DEPARTMENT

APPROVED BY: *John Red*
 ENGINEERING MANAGER
 PRINCIPAL ENGINEER
 TRAFFIC DIVISION
 STREET SERVICES
 INSPECTION
 DATE 5/30/02

MISSION GROVE PARKWAY
 MEDIAN ISLANDS
 FROM TRAUTWEIN ROAD TO
 ALESSANDRO BOULEVARD

HORIZ. SCALE: 1" = 20' VERT. SCALE:

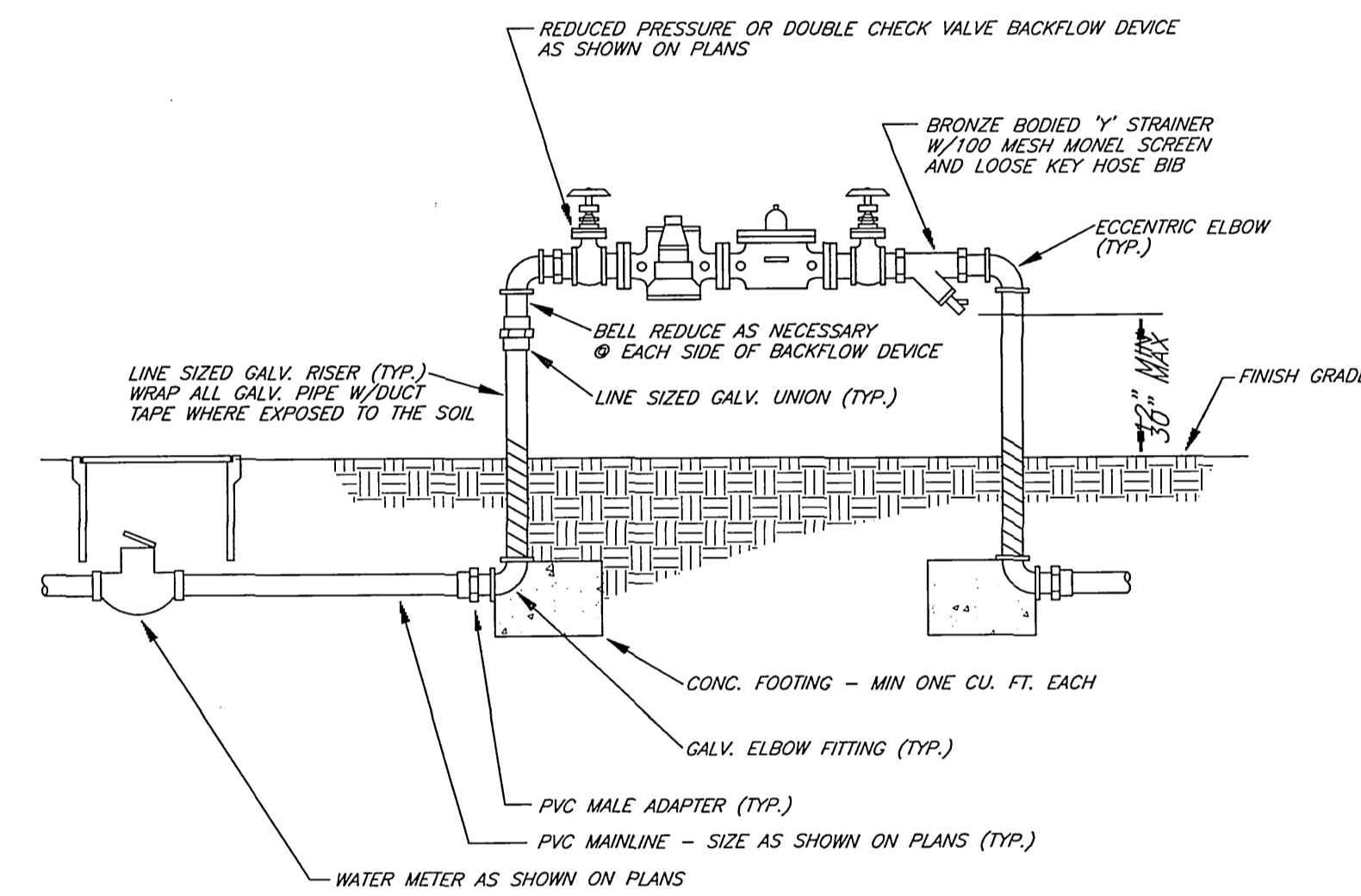
ACCT. NO.: 7010060-455030
 R-3651
 SHEET 5 OF 7
 FILE NO.



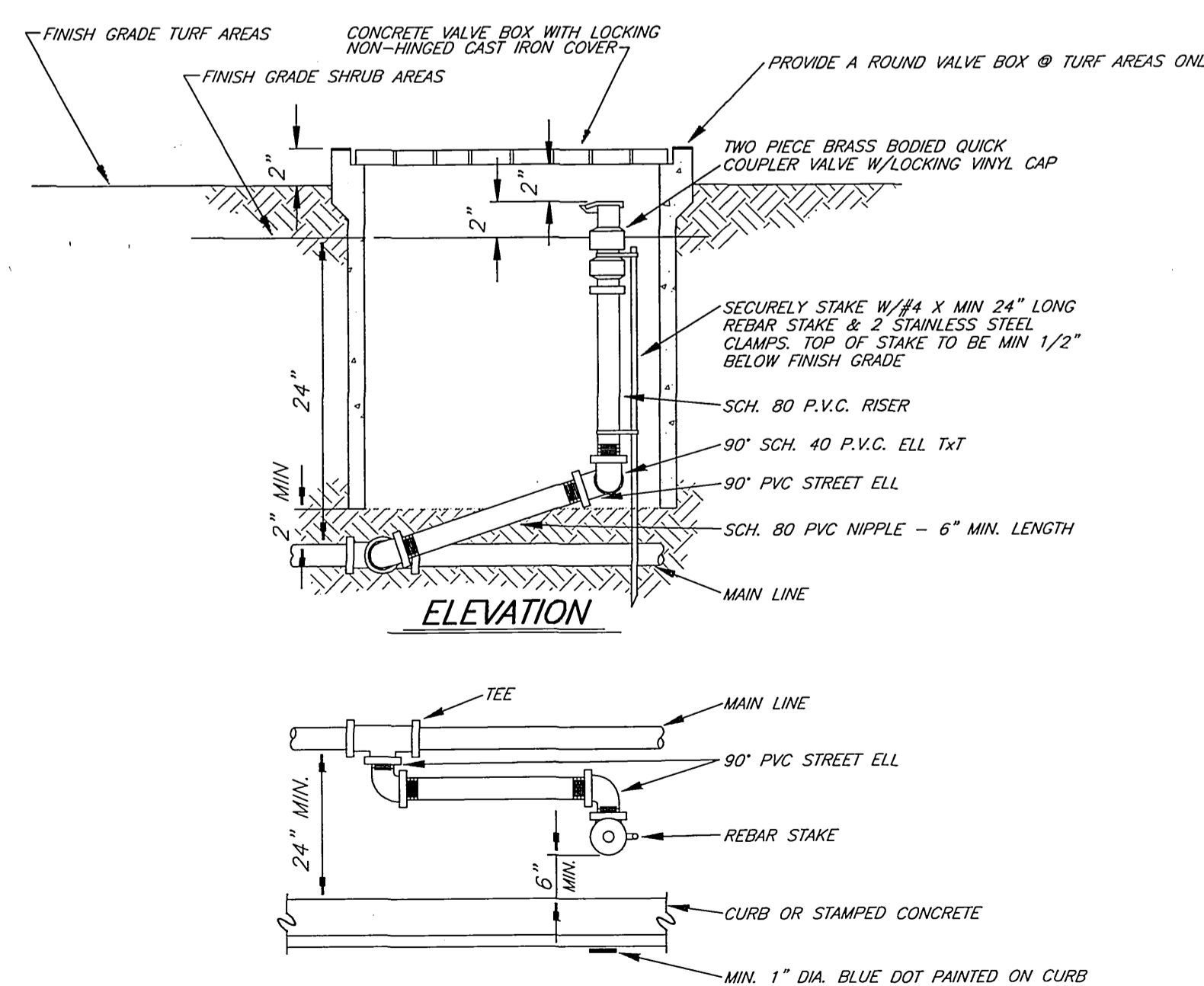
1 TYPICAL BALL VALVE ASSEMBLY
NO SCALE

NOTES

- 1) INSTALL BACKFLOW DEVICE SQUARE WITH HARDSCAPE ELEMENT AS APPROVED BY THE PARK PROJECTS INSPECTOR IN THE FIELD
- 2) MODIFY HANDWHEELS AS DIRECTED OR REMOVE & TURN OVER TO PARKS PROJECTS INSPECTOR AT FINAL INSPECTION



2 TYPICAL BACKFLOW DEVICE
NO SCALE

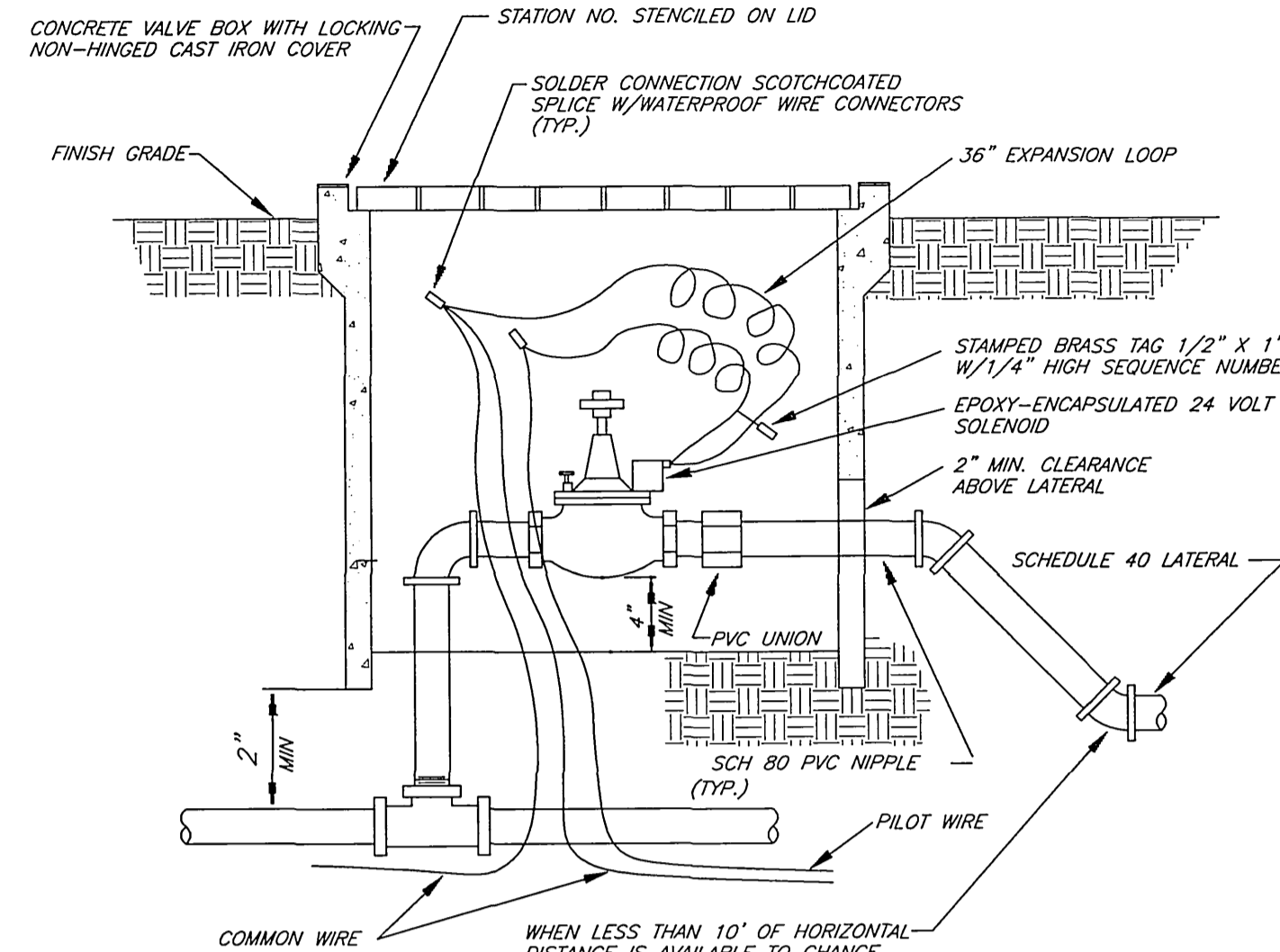


PLAN VIEW

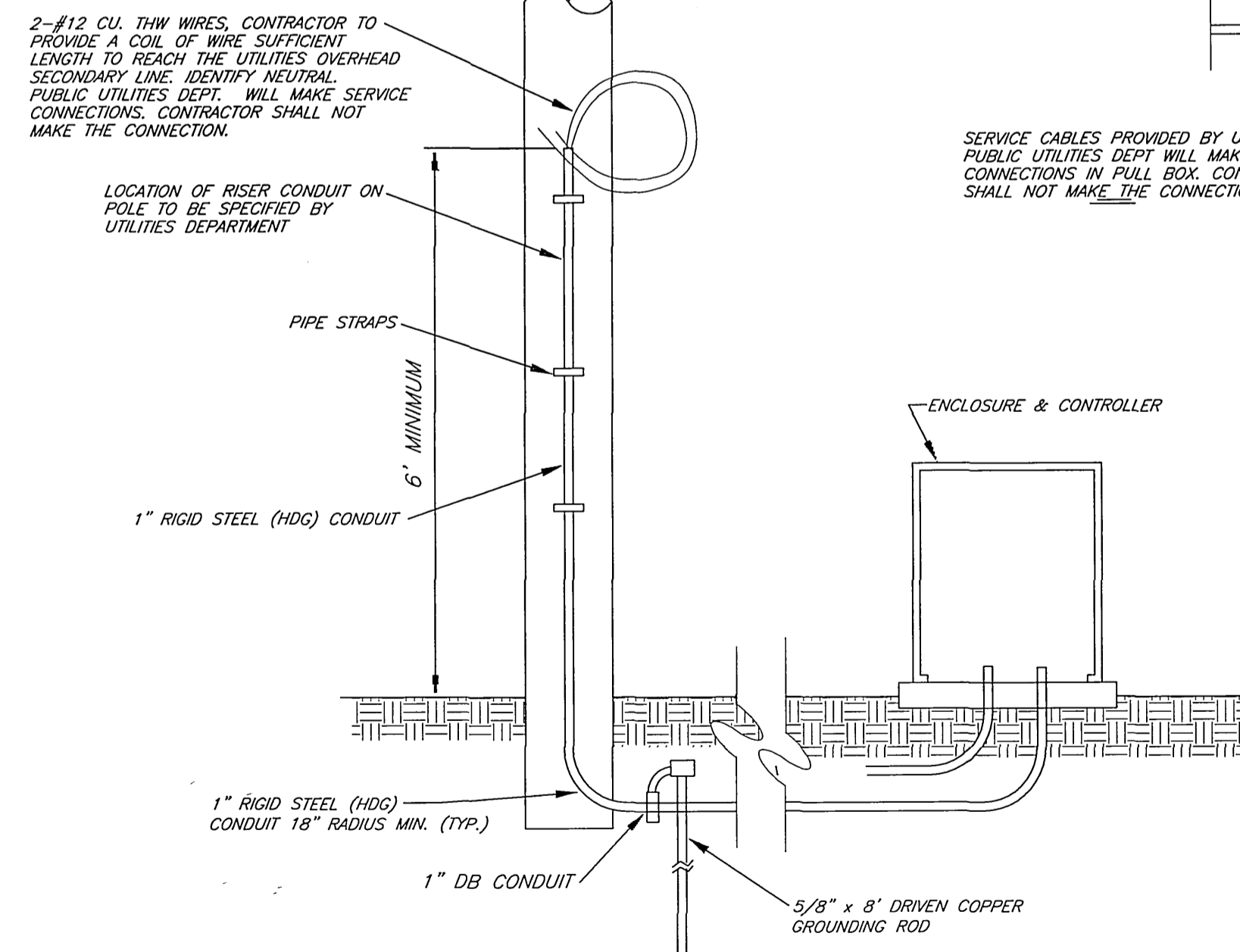
3 TYPICAL QUICK COUPLER VALVE
NO SCALE
(NOTE: PROVIDE A ROUND CONCRETE VALVE BOX IN TURF AREAS)

NOTES

- 1) EACH VALVE SHALL HAVE ITS OWN TEE OR ELL CONNECTION TO THE MAINLINE. NO MANIFOLD CONNECTIONS
- 2) PROVIDE MINIMUM 3' CLEAR DISTANCE BETWEEN VALVES
- 3) INSTALL VALVE BOX IN A MANNER THAT BOX DOES NOT REST ON ANY IRRIGATION LINE



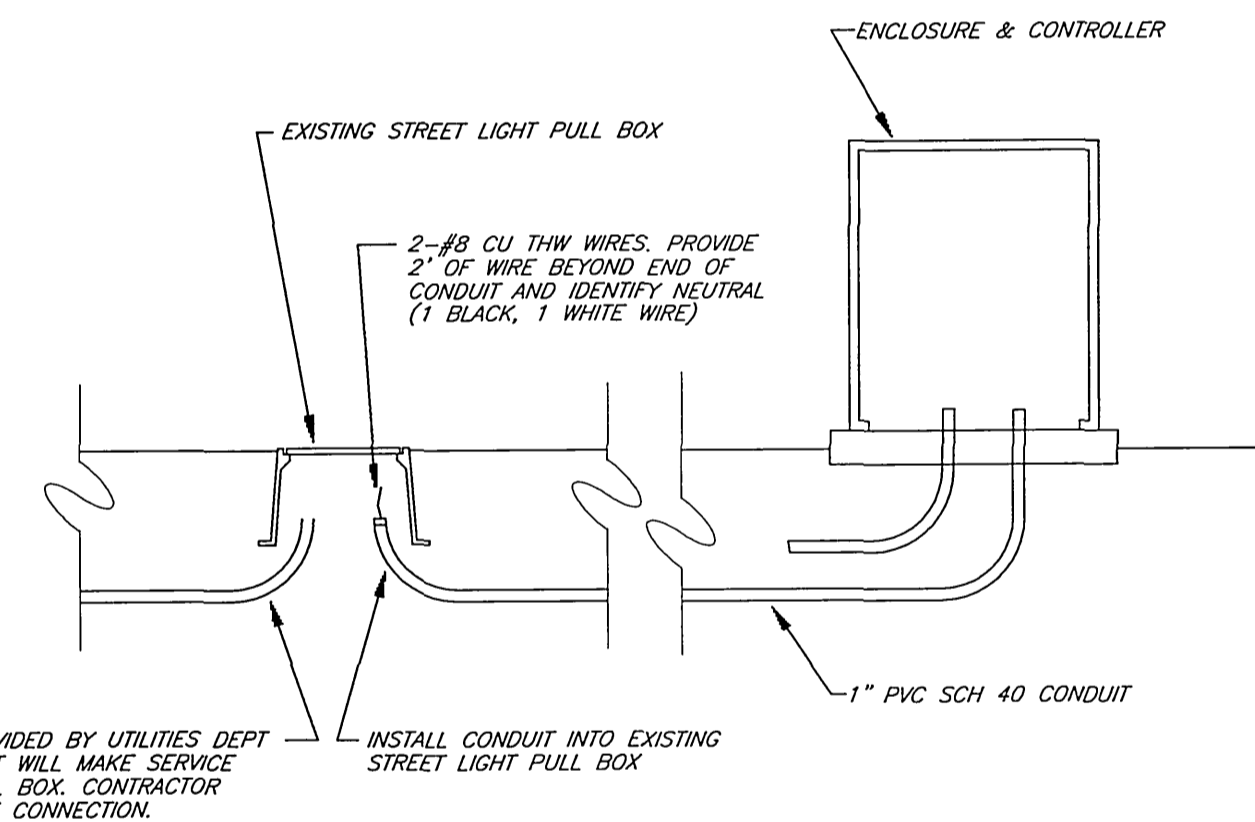
4 TYPICAL AUTOMATIC VALVE
NO SCALE



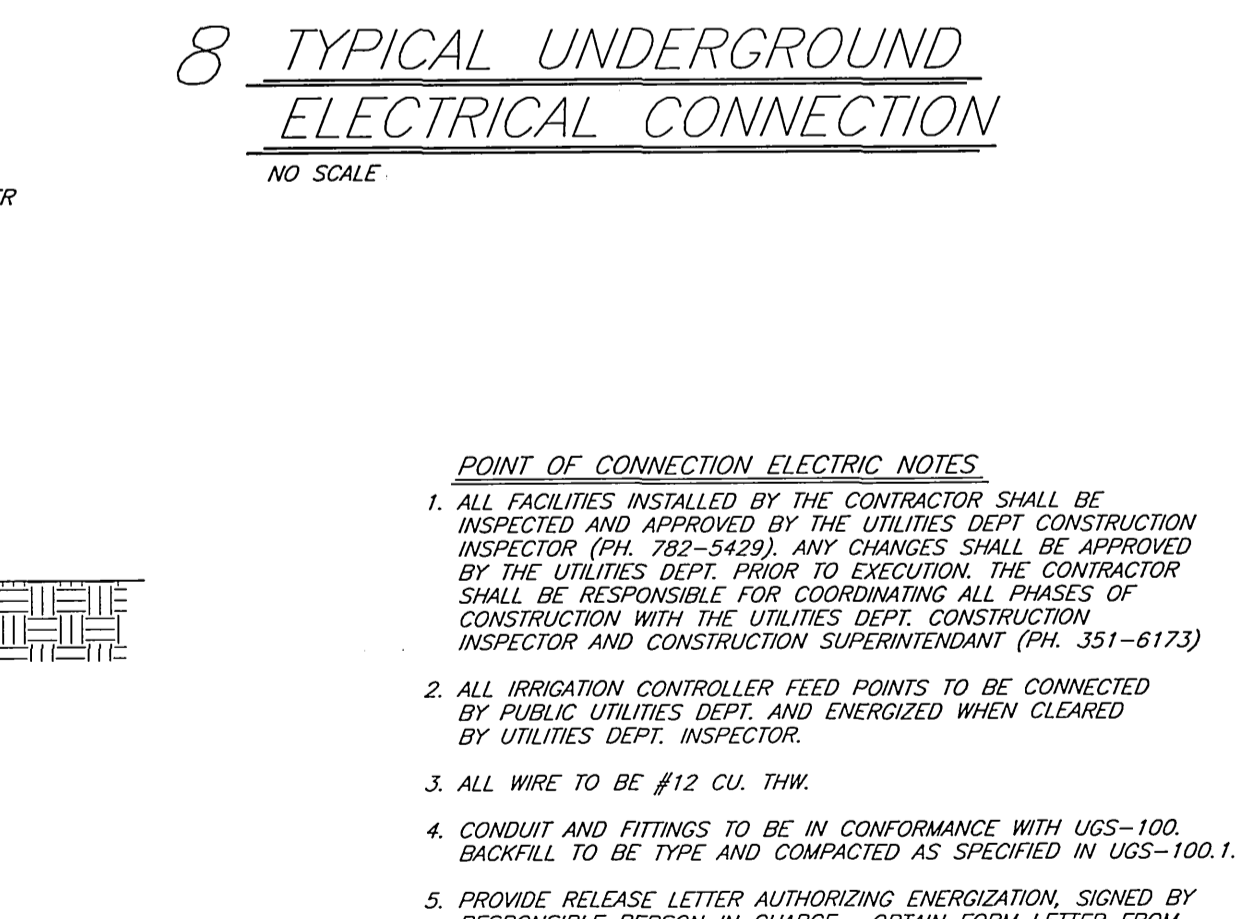
ELEVATION

PLAN VIEW

5 TYPICAL SPRAY HEAD ASSEMBLY
NO SCALE



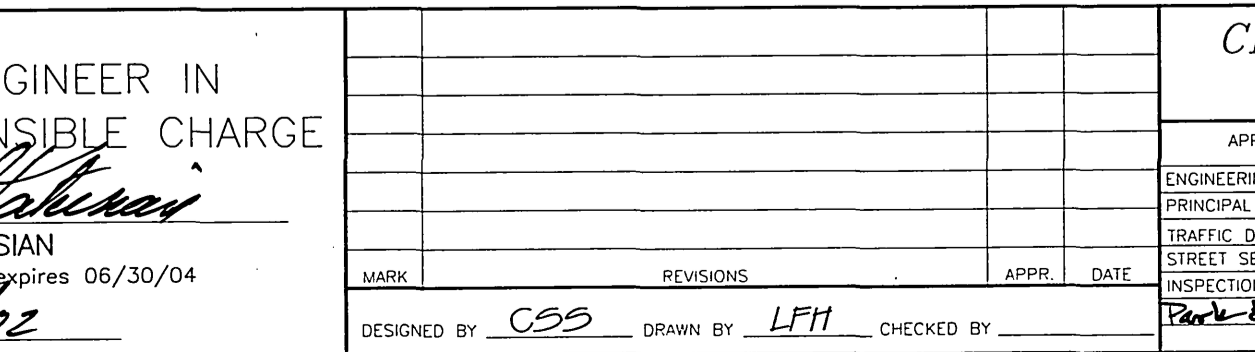
6 TYPICAL CONTROLLER
NO SCALE



7 TYPICAL OVERHEAD ELECTRIC CONNECTION
NO SCALE

POINT OF CONNECTION ELECTRIC NOTES

1. ALL FACILITIES INSTALLED BY THE CONTRACTOR SHALL BE INSPECTED AND APPROVED BY THE UTILITIES DEPT. CONSTRUCTION INSPECTOR (PH. 782-5429). ANY CHANGES SHALL BE APPROVED BY THE UTILITIES DEPT. PRIOR TO EXECUTION. THE CONTRACTOR SHALL BE RESPONSIBLE FOR COORDINATING ALL PHASES OF CONSTRUCTION WITH THE UTILITIES DEPT. CONSTRUCTION INSPECTOR AND CONSTRUCTION SUPERINTENDANT (PH. 351-6173)
2. ALL IRRIGATION CONTROLLER FEED POINTS TO BE CONNECTED BY PUBLIC UTILITIES DEPT. AND ENERGIZED WHEN CLEARED BY UTILITIES DEPT. INSPECTOR.
3. ALL WIRE TO BE #12 CU. THW.
4. CONDUIT AND FITTINGS TO BE IN CONFORMANCE WITH UGS-100. BACKFILL TO BE TYPE AND COMPACTED AS SPECIFIED IN UGS-100.1.
5. PROVIDE RELEASE LETTER AUTHORIZING ENERGIZATION, SIGNED BY RESPONSIBLE PERSON IN CHARGE. OBTAIN FORM LETTER FROM UTILITY INSPECTOR.



8 TYPICAL UNDERGROUND ELECTRICAL CONNECTION
NO SCALE

IRRIGATION SYSTEM DESIGN CRITERIA

WATER SERVICE:
CONTRACTOR SHALL CONTACT WESTERN MUNICIPAL WATER DISTRICT AND OBTAIN AND PAY FOR NEW WATER METER(S) AS NECESSARY TO ADEQUATELY SERVE THE IRRIGATION SYSTEM AS DESIGNED. METER AND BACKFLOW DEVICES SHALL BE LOCATED IN THE PARKWAY A MINIMUM OF 100' FROM ANY INTERSECTION OR MAJOR DRIVEWAY (CURB RETURN TYPE DRIVEWAY OPENING). CONTRACTOR SHALL BE RESPONSIBLE FOR ALL WATER COSTS THROUGHOUT THE MAINTENANCE AND PLANT ESTABLISHMENT PERIOD.

ELECTRIC SERVICE:
CONTRACTOR SHALL CONTACT THE CITY OF RIVERSIDE, PUBLIC UTILITIES, ELECTRIC DIVISION AND SHALL OBTAIN AND PAY FOR NEW "NON-METERED" ELECTRIC SERVICE AS NECESSARY TO SERVE THE NEW IRRIGATION CONTROLLER. SERVICE SHALL BE UNDERGROUND TYPE AND SHALL BE COORDINATED WITH THE CONTROLLER LOCATION.

IRRIG. CONTROLLER:
THE IRRIGATION CONTROLLER SHALL BE SIZED TO ACCOMMODATE THE NUMBER OF VALVES REQUIRED TO SERVE THE ENTIRE PROJECT AND TO PROVIDE A MINIMUM OF TWO SPARE STATIONS. THE CONTROLLER SHALL BE THE TYPE AND MANUFACTURER AS INDICATED ON THE PLANS. CONTROLLER SHALL BE WEATHERPROOF, WALL-MOUNT TYPE, INSTALLED WITHIN A LOCKING METAL ENCLOSURE, AND SHALL BE LOCATED MID-BLOCK IN THE PARKWAY A MINIMUM OF 100' FROM ANY INTERSECTION OR MAJOR DRIVEWAY (CURB RETURN TYPE DRIVEWAY OPENING).

MAINLINE & SLEEVES:
ALL LINES BENEATH THE STREET (I.E. NOT WITHIN THE LANDSCAPE MEDIAN PLANTING AREAS) SHALL BE CONSISTENT PRESSURE LINES INSTALLED IN SLEEVES. SLEEVES SHALL BE INSTALLED IN STRAIGHT LINES (NO TURNS OR BENDS, EITHER VERTICAL OR HORIZONTAL). PROVIDE A LINE SIZE BALL VALVE WITHIN A VALVE BOX IMMEDIATELY UPSTREAM OF LINE ENTERING THE STREET AREA. SIZE MAINLINE TO KEEP WATER VELOCITY BELOW 5 FEET PER SECOND.

CONTROL WIRE:
ALL CONTROL WIRE LOCATED UNDER PAVEMENT OF ANY TYPE SHALL BE SEPARATELY SLEEVED. PROVIDE A MINIMUM OF TWO SPARE CONTROL WIRE AT EACH END OF THE PROJECT, STUBBED OUT IN A VALVE BOX.

LATERAL LINES:
SIZE ALL LATERAL LINES AS NECESSARY TO KEEP WATER VELOCITY BELOW 5 FEET PER SECOND. DESIGN LATERAL LINE PLACEMENTS AT EDGES OF PLANTING SPACES TO AVOID CONFLICT WITH PLANTINGS.

CONTROL VALVES:
ALL IRRIGATION CONTROL VALVES SHALL BE SIZED TO PROVIDE THE WATER VOLUME REQUIRED WITH PRESSURE LOSS THROUGH THE VALVE KEPT AT BELOW A MAXIMUM OF 10% OF THE AVAILABLE STATIC PRESSURE. INSTALL VALVES IN "ANGLE" CONFIGURATION WHERE AVAILABLE. ALL STATIONS SHALL BE SIZED TO AVOID STATIONS WITH MORE THAN 20 GPM DEMAND OR 50 HEADS PER STATION WHICHEVER IS GREATER.

QUICK COUPLERS:
PROVIDE QUICK COUPLER VALVES AT A MINIMUM OF 50' FROM THE END OF THE LANDSCAPED AREA IN EACH ISLAND, AND SPACE AT A MAXIMUM OF 50' O.C. IN SHRUB AREAS AND 75' O.C. IN TURF AREAS.

HEADS:
ALL HEADS SHALL BE OF THE TYPE AND MANUFACTURER INDICATED ON THE PLANS AND SHALL BE INSTALLED WITH TRIPLE SWING JOINTS AS DETAILED.

REGISTERED PROFESSIONAL ENGINEER
MICHAEL KATUSIAN
No. 36686
Exp. 6-30-04
CIVIL
STATE OF CALIFORNIA

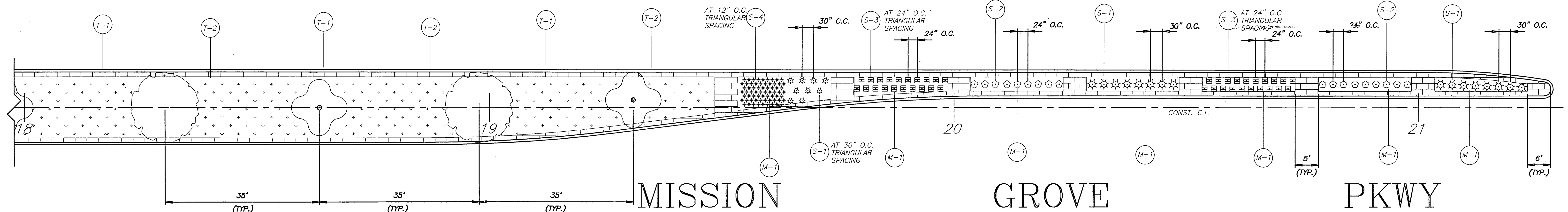
ENGINEER IN RESPONSIBLE CHARGE
MICHAEL KATUSIAN
R.C.E. No. 36686 expires 06/30/04
DATE 5/29/02

DESIGNED BY	CSS	DRAWN BY	LFH	CHECKED BY	
MARK	REVISIONS	APPR.	DATE	INSPECTION	

CITY OF RIVERSIDE, CALIFORNIA PUBLIC WORKS DEPARTMENT	
APPROVED BY	DATE
ENGINEERING MANAGER	
PRINCIPAL ENGINEER	
TRAFFIC DIVISION	
STREET SERVICES	
INSPECTION	

MISSION GROVE PARKWAY MEDIAN ISLANDS FROM TRAUTWEIN ROAD TO ALESSANDRO BOULEVARD	
HORIZ. SCALE: 1" = 20'	VERT. SCALE:

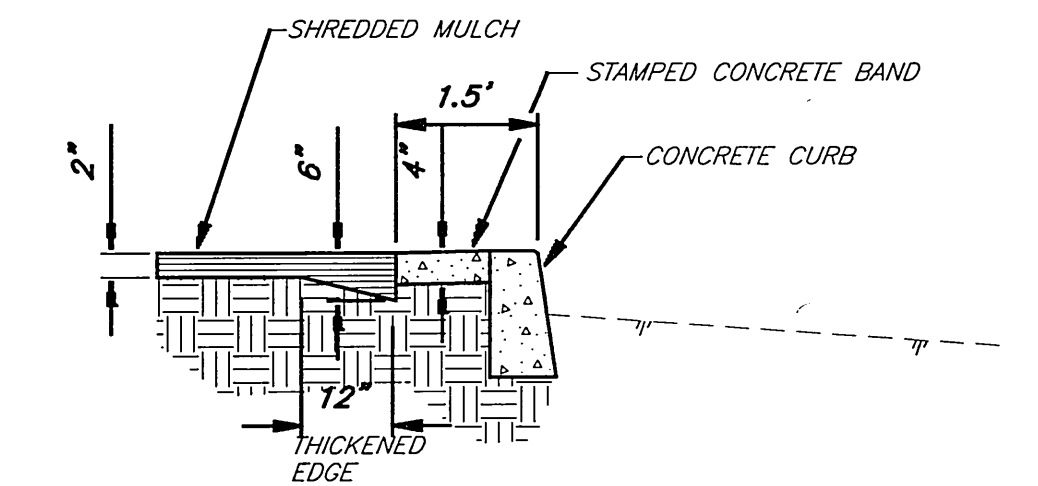
ACCT. NO.: 7010060-455030	R-3651
	SHEET 6 OF 7
	FILE NO.



MISSION GROVE PKWY
PLANTING DETAIL
NO SCALE

SYMBOL		DESCRIPTION		*DETAIL	REMARKS	SYMBOL		DESCRIPTION		*DETAIL	REMARKS	MIN. OP. PRESSURE	PRECIP. RATE
[Symbol]		CONTROLLER STATION				[Symbol]		FEBCO 825Y R.P. BACKFLOW PREVENTER W/WILKENS 500 YBSR PRESSURE REGULATOR/STRAINER		2	SIZE PER PLAN		
[Symbol]		G.P.M. DEMAND SIZE PER PLAN				[Symbol]		MASTER CONTROL VALVE, GRISWOLD SERIES 2000 1-1/2" DIA.					
[Symbol]		GRISWOLD 2000 REMOTE CONTROL VALVE				[Symbol]		TORO 570 12" HP-MPR-15H SPRAY SPRINKLER 15'R 1.65 GPM					
[Symbol]		RAINBIRD 44LR 1" QUICK COUPLER				[Symbol]		TORO 570 12" HP-MPR-12H SPRAY SPRINKLER 12'R 1.09 GPM					
[Symbol]		RAINBIRD ESP-MC CONTROLLER (NO. OF STATIONS PER PLAN)				[Symbol]		TORO 570 12" HP-MPR-8H-PC SPRAY SPRINKLER 8'R 0.59 GPM					
[Symbol]		NIBCO T-580 BALL VALVE				[Symbol]		TORO 570 12" HP-MPR-BQ SPRAY SPRINKLER 8'R X 24 GPM					
[Symbol]		PRESSURE MAINLINE PVC SCH 40				[Symbol]		TORO 570 12" HP-MPR-4CST-PC SPRAY SPRINKLER 4' X 30' 0.75 GPM					
[Symbol]		INTERMITTENT PRESSURE LATERAL LINE PVC CL200				[Symbol]		TORO 570 12" HP-MPR-4EST-PC SPRAY SPRINKLER 4' X 15' 0.38 GPM					
[Symbol]		PVC PIPE & WIRE SLEEVE SIZE PER PLAN OR 2X PIPE DIA.				[Symbol]		TORO 570 12" HP-MPR-BT SPRAY SPRINKLER 8'R 0.30 GPM					
[Symbol]		UF DIRECT BURIAL CONTROL WIRE, SOLID COPPER				[Symbol]							

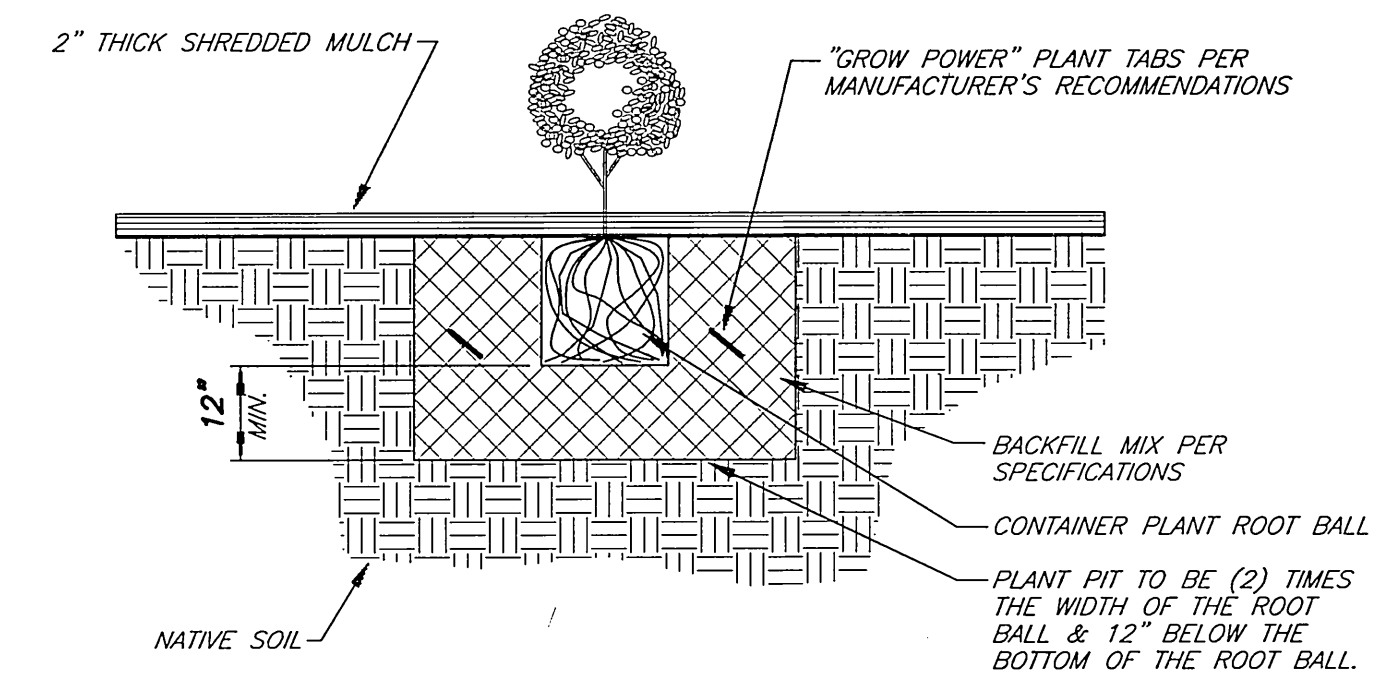
(*SEE TYPICAL IRRIGATION CONNECTION DETAIL BELOW FOR DETAILS)



NOTE:
1. MULCH TO BE UNIFORMLY APPLIED THROUGHOUT THE SHRUB AREAS EXCEPT WITHIN TREE BASINS (EXCLUDES TURF AREAS).

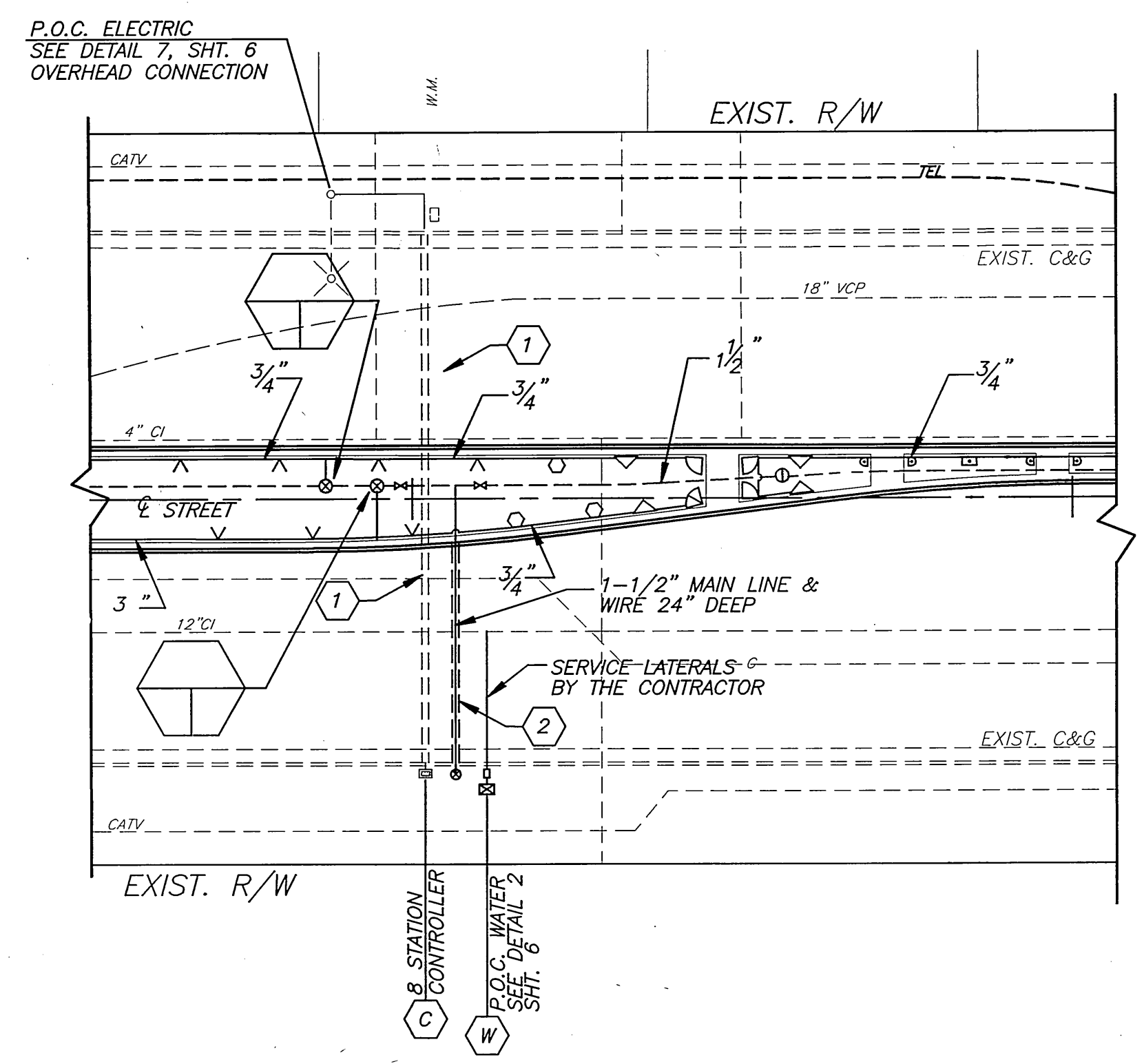
SHREDDED MULCH IN PLANT BED (TYP.)
SCALE: 1"=2"

NOTES:
1. UNTANGLE Matted ROOTS BY LOOSENING ALL ROOTS AT EDGE OF ROOT BALL WITH WATER FROM HOSE. DO NOT CRACK ROOT BALL.
2. PLACE "GROW POWER" TABS IN PLANT CONTAINER PRIOR TO PLANTING FOR OBSERVATION PURPOSES.

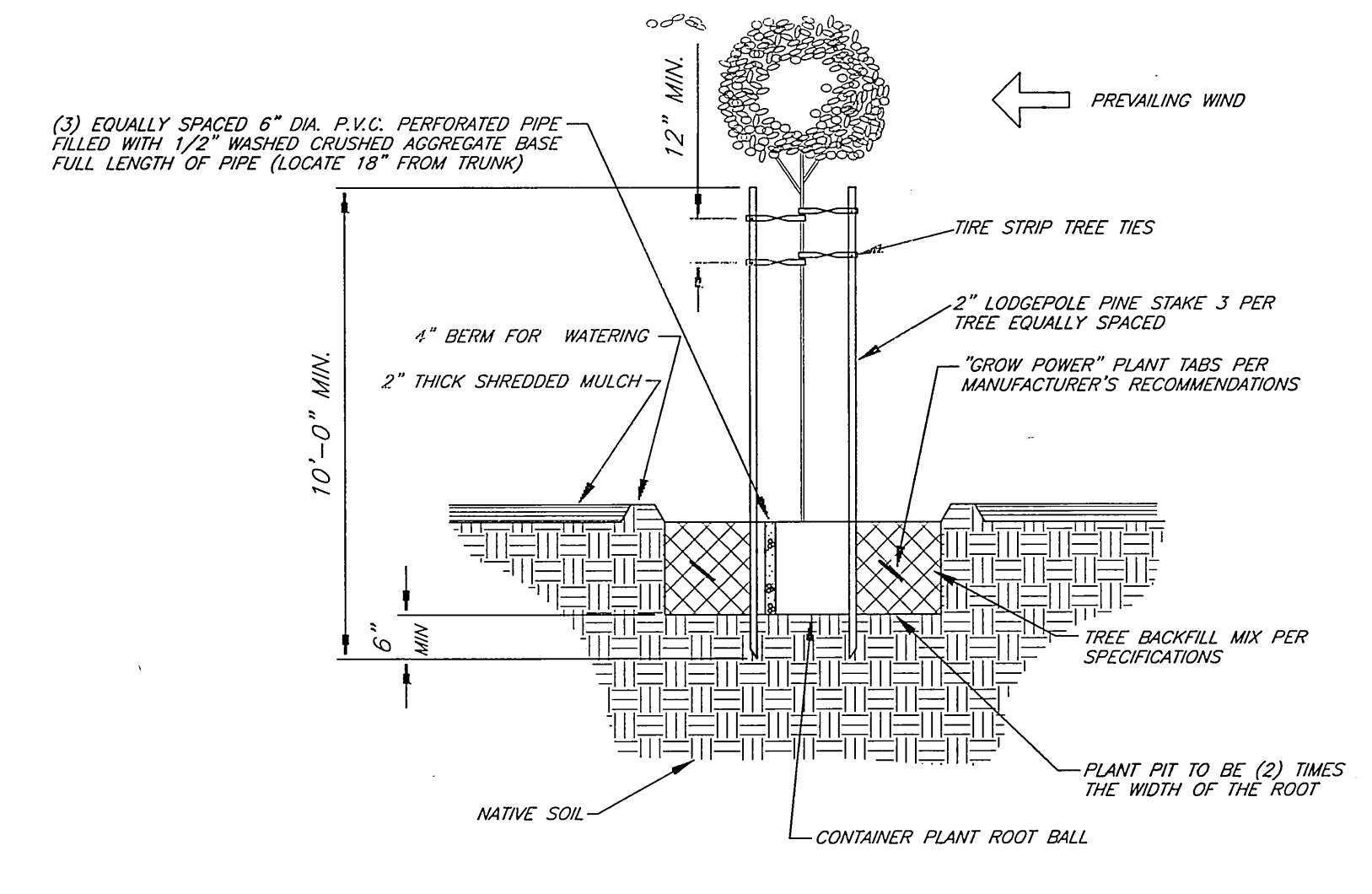


CONTAINER PLANTING MEDIAN PLANTER
SCALE: 1"=2"

- PLANTING NOTES:**
- PLANT DESIGN IS DIAGRAMMATIC AND SHALL NOT TAKE PLACE WHERE UNFORESEEN SITE CONDITIONS PREVENT EXECUTION OF THE DESIGNER'S INTENT. WHEN UNEXPECTED SITE CONDITIONS CAUSE UNREASONABLE DEVIATIONS IN THE INTENDED PLANTING SCHEME, THE CONTRACTOR SHALL IMMEDIATELY INFORM THE ENGINEER.
 - MAINTENANCE PERIOD SHALL BE 360 DAYS FROM DATE OF ACCEPTANCE. PLANTING SHALL BE GUARANTEED FOR ONE YEAR. MAINTENANCE SHALL INCLUDE BI-WEEKLY WEED AND RODENT ABATEMENT PROCEDURES INCLUDING 4 FOLIAR APPLICATIONS OF CHELATED IRON AND TRACE MINERALS 90 DAYS APART.
 - REPLACEMENT OF DAMAGED OR DESTROYED ITEMS SHALL TAKE PLACE WITHIN 48 HOURS OF NOTIFICATION BY THE CITY'S REPRESENTATIVE, OR SAID REPLACEMENT ITEMS SHALL BE DEDUCTED FROM THE CONTRACTOR'S FINAL BILLING.
 - REPLACEMENT ITEMS SHALL BE EXACT DUPLICATE OF ORIGINAL WORK OR PLANTS, UNLESS OTHERWISE APPROVED BY THE ENGINEER OR CITY'S REPRESENTATIVE.
 - TREES AND SHRUBS SHALL BE PLANTED AFTER CONCRETE PLACEMENT, BUT NOT BEFORE IRRIGATION COVERAGE HAS BEEN APPROVED.
 - PLACE TREES BETWEEN SPRAY HEADS WHEREVER POSSIBLE.
 - TREE BACKFILL MIX SHALL CONSIST OF THE FOLLOWING PER CU. YD.:
2/3 YD. SCREENED SITE SOIL
1/3 YD. NITROLIZED WOOD SHAVINGS
1 LB. 12-12-12 COMMERCIAL FERTILIZER
10 LBS. AG GYPSUM
1 LBS. SOIL SULFUR
2 LBS. IRON SULFATE
 - IRRIGATION SYSTEM SHALL BE INSTALLED PRIOR TO PLANT MATERIAL.
 - CLEAN-UP SHALL TAKE PLACE ON A DAILY BASIS UNLESS OTHERWISE APPROVED BY THE CITY'S REPRESENTATIVE.



TYPICAL IRRIGATION CONNECTION DETAIL
NO SCALE



MEDIAN TREE PLANTING / STAKING DETAIL
NO SCALE

NOTES:
1. STAKES SHALL NOT PIERCE ROOTBALL AND SHALL EXTEND INTO UNDISTURBED SOIL.
2. PLACE "GROW POWER" TABS IN PLANT CONTAINER PRIOR TO PLANTING FOR OBSERVATION PURPOSES.

IRRIGATION CONSTRUCTION LEGEND:

- CONTRACTOR SHALL INSTALL WATER SERVICE FOR 3/4" WATER METERS PER WESTERN MUNICIPAL WATER DISTRICT STD. DWG. NO. W-0070, SUBJECT TO THE APPROVAL AND INSPECTION OF THE WESTERN MUNICIPAL WATER DISTRICT (WESTERN MUNICIPAL WATER DISTRICT TO SUPPLY AND INSTALL THE METERS).
- INSTALL 2" DIA. P.V.C. SCH. 40 SLEEVING, EXTENDING 1' INTO PLANTING AREA OF MEDIAN WITH A MINIMUM OF 24" COVER, TERMINATING IN BROOKS #3 PULLBOX OR CITY APPROVED EQUAL W/TRAFFIC COVER, AT EACH END, FOR IRRIGATION CONTROL WIRES.
- INSTALL 3" DIA. P.V.C. SCH. 40 SLEEVING, EXTENDING 1' INTO PLANTING AREA OF MEDIAN, 24" COVER, FOR IRRIGATION SUPPLY LINE.

ITEM	SYMBOL	BOTANICAL NAME	COMMON NAME	SIZE	REMARKS	QUANTITY
TREE	T-1	FODOCARPUS	FERN PINE	24" BOX	TREE LOCATIONS SHOWN ARE ONLY APPROXIMATE	13
TREE	T-2	LAGERSTROEMIA INDICA	CRAPE MYRTLE (SEE NOTE BELOW)	24" BOX	TREE LOCATIONS SHOWN ARE ONLY APPROXIMATE	21
SHRUB	S-1	PITTOSPORUM TOBIRA	WHEELER'S DWARF TOBIRA	5 GAL.	SPACED AT 30" O.C.	115
HYDROSEEDED TURF	H-1				SEE SPECIFICATION 02480	
MULCH MATERIAL	M-1				SHREDDED MULCH MEDIUM GRIND 2" THICK	
SHRUB	S-2	RHAPHIOLEPIS INDICA	COMPACT INDIA HAWTHORNE	5 GAL.	SPACED @ 24" O.C.	40
SHRUB	S-3	ACAPANTHUS	DWARF LILY OF THE NILE	1 GAL.	SPACED @ 12" O.C.	80
SHRUB	S-4	HEMEROCALLIS	DAY LILY	1 GAL.	SPACED @ 12" O.C.	340

NOTE: PLANT CRAPE MYRTLE TREES WITH AN ALTERNATING VARIETY OF COLORS SUCH AS RED, PINK, PURPLE & WHITE.

P.O.C. DATA WATER SERVICE

METER SIZE: XX"X"

SERVICE ADDRESS: XXXXXXXXXXXXXXXXXXXX

ELEVATION: XXX.XX

PRESSURE ZONE: GRAVITY (XXX ZONE)

STATIC PRESSURE: XX P.S.I.

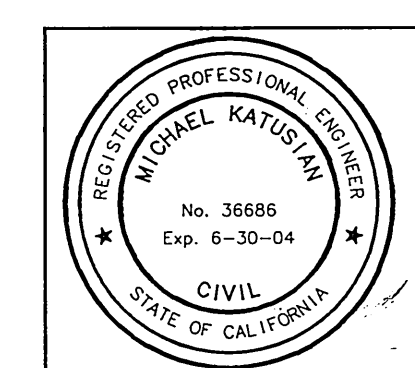
SERVED AREA: HIGHEST ELEV. XXX.XX
LOWEST ELEV. XXX.XX

MAX. GPM DEMAND: XX.XX G.P.M.

METER NO.:

IRRIGATION CONSTRUCTION NOTES:

- ALL IRRIGATION LINES TO BE INSTALLED UNDER HARDSCAPE AREAS SHALL BE INSTALLED IN SCH. 40 P.V.C. SLEEVES, SLEEVE SIZE SHALL BE TWICE THE DIAMETER OF THE IRRIGATION PIPE SIZE (MIN.).
- ALL IRRIGATION CONTROL WIRES TO BE INSTALLED UNDER HARDSCAPE AREAS SHALL BE INSTALLED IN 2" SCH. 40 P.V.C. SLEEVES (MIN.).
- ALL IRRIGATION VALVES, BALL VALVES, QUICK COUPLERS AND BOXES ARE TO BE LOCATED IN PLANTING AREAS.



ENGINEER IN RESPONSIBLE CHARGE
Michael Katousian
MICHAEL KATOUSIAN
R.C.E. No. 36686 expires 06/30/04
DATE 5/29/02

MARK	REVISIONS	APPR.	DATE

CITY OF RIVERSIDE, CALIFORNIA
PUBLIC WORKS DEPARTMENT

APPROVED BY: [Signature]
DATE: 5/31/02

DESIGNED BY: CSS DRAWN BY: LFM CHECKED BY: [Signature]

MISSION GROVE PARKWAY
MEDIAN ISLANDS
FROM TRAUTWEIN ROAD TO
ALESSANDRO BOULEVARD

HORIZ. SCALE: VERT. SCALE:

ACCT. NO.: 7010060-455030
R-3651
SHEET 7 OF 7
FILE NO.

PC-3348-M3