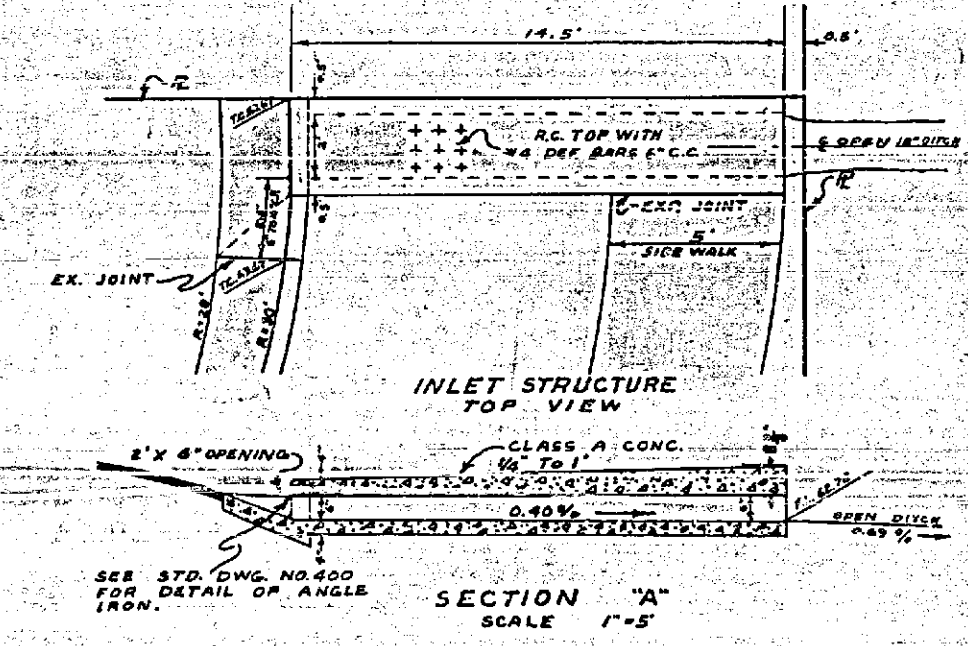
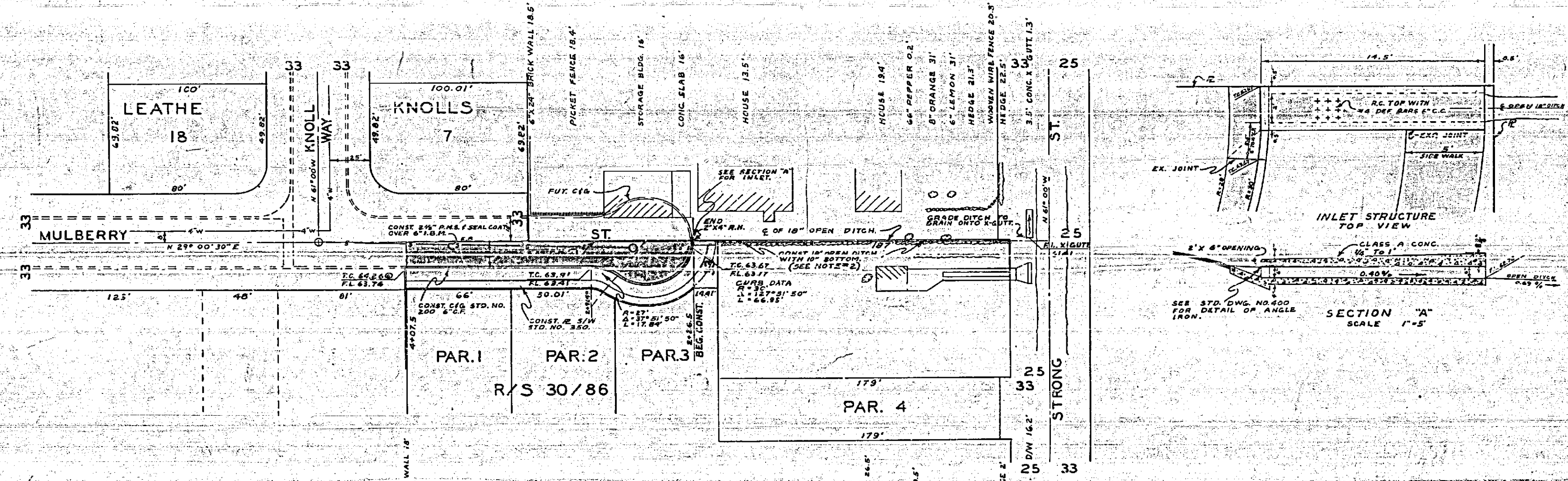
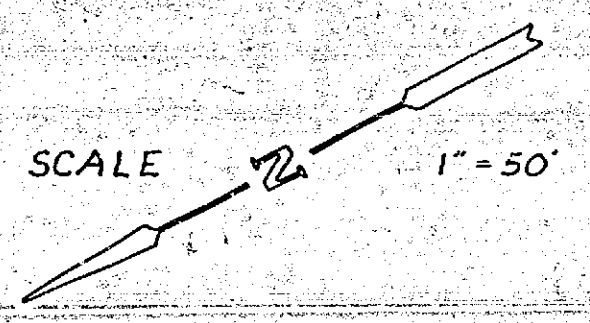
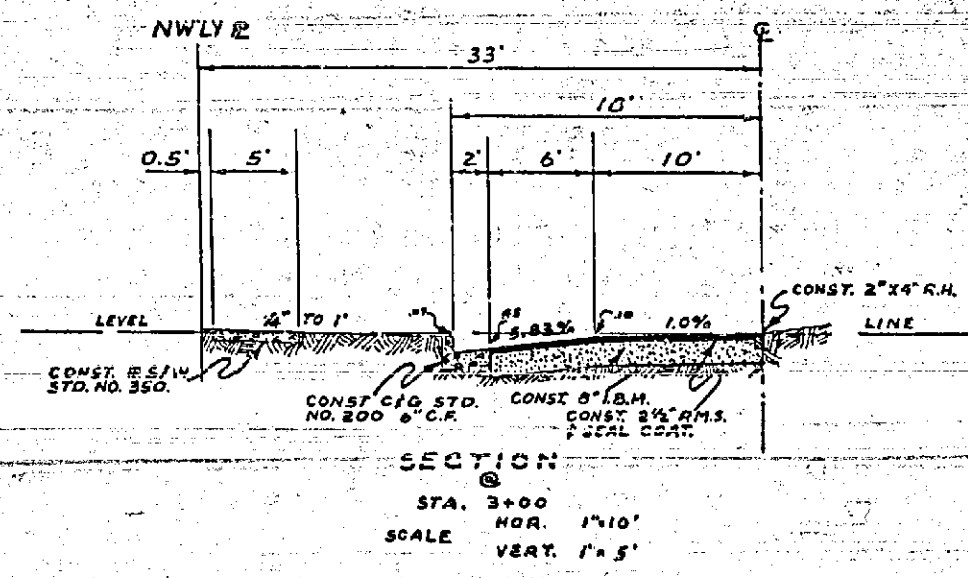


B.M. ELEV. 663.70' N-L IN S.E. CB.
 RET. MULBERRY & KNOLL WAY
 F.B. 659/24-30
 SCALE: HOR. 1" = 50'
 VERT. 1" = 5'

PROFILE	
NO.	DATE



PLAN	
NO.	DATE



NOTE: It shall be the responsibility of the Contractor to clear the right of way in accordance with the provisions of the law as it affects each utility including irrigation lines and appurtenances and of no cost to the City.
 Confine open ditch to Ely 18' of lot indicated.

REVISIONS	
MARK	DATE

CITY OF RIVERSIDE CALIFORNIA
 DEPARTMENT OF PUBLIC WORKS

MULBERRY STREET
 CURB & GUTTER
 BET.
 STRONG & KNOLL WAY

DESIGNED BY B.L.
 DRAWN BY B.L.
 RECOMMENDED BY ASSISTANT CITY ENGINEER

CHECKED BY W.L.S.
 DATE April 19, 1950

APPROVED BY
 DIRECTOR OF PUBLIC WORKS

R-367
 SHEET 1 OF 1