

**CONSTRUCTION LEGEND**

CONSTRUCT STRUCTURAL SECTION OF: 0.33' D.G.A.C. OVER 1.08' C.A.B.

**SPECIFIC CONSTRUCTION NOTES**

NUMBERS ABOVE 100 IN A HEXAGON ON THE PLAN REFER TO THE RESPECTIVE STANDARD DRAWING AND SHALL BE CONSTRUCTED ACCORDINGLY. UNLESS MODIFICATIONS ARE NOTED ON THE PLAN OR COVER SHEET, ANY NUMBER SHOWN BELOW THE STANDARD DRAWING NUMBER INDICATES THE SPECIFIC ALTERNATE TO BE CONSTRUCTED.

- 1 REMOVE EXISTING CURB AND CONCRETE WITHIN CONSTRUCTION LIMITS
- 2 REMOVE AND SALVAGE EXISTING STREET SIGN.
- 3 EXISTING TRAFFIC SIGNAL INTERCONNECT TO BE RELOCATED TO PROPOSED MEDIAN.

**CONSTRUCTION LEGEND**

- 1 12"x12" TILE PATTERN STAMPED CONCRETE
- 2 ASHLAR SLATE PATTERN STAMPED CONCRETE
- 3 CONSTRUCT 5'x5' TREE PLANTER PER DETAIL "B"

**PLANTING LEGEND**

- △ 5'x5' TREE PLANTER PLANTING PER DETAIL "C"

**NOTE:**  
ALL WORK ON THIS SHEET TO BE SUBJECT TO PARK AND RECREATION DEPARTMENT PUBLIC LANDSCAPE PERMIT AND INSPECTION PROCESS.

**TEXTURED PAVING NOTES**

- ISLAND NOSES AND MEDIAN BANDS: 4" THICK SLAB ON GRADE, 3,000 P.S.I. DESIGN MIX. STAMP - LOW PROFILE/LOW WAFFLE BOMANITE 12"x12" TILE PATTERN OR APPROVED EQUAL, REFER TO BULLETIN 309. COLOR - NO. C-22 CORAL RED CHROMIX ADMIXTURE BY L.M. SCOFIELD, FINE BROOM FINISH PERPENDICULAR TO STREET.
- MEDIAN AREAS: 4" THICK SLAB ON GRADE, 3,000 PSI DESIGN MIX. STAMP ASHLAR BOMACRON PATTERN BY BOMANITE, OR AN APPROVED EQUAL. REFER TO BULLETIN 405. COLOR - NO. A-50 SLATE GREY ADMIXTURE BY L.M. SCOFIELD. TEXTURE - ASHLAR SLATE BOMACRON.
- CONTROL JOINTS: BETWEEN BOMANITE BAND AND BOMACRON ASHLAR SLATE PATTERN SHALL BE A COLD JOINT. BETWEEN BOMANITE BAND AND BACK OF CURB SHALL BE A COLD JOINT.
- INSTALLATION PROCESS: BOMANITE TEXTURED PAVING, OR APPROVED EQUAL - REFER TO BULLETIN 309.

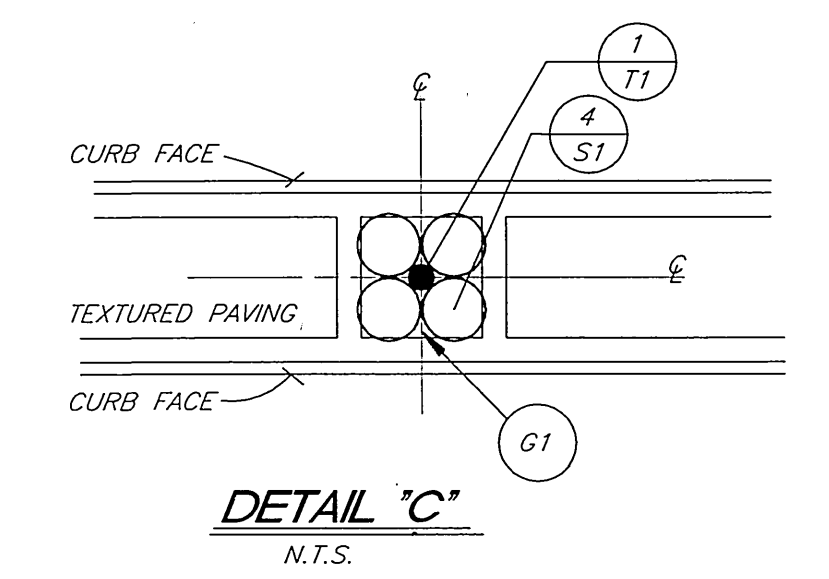
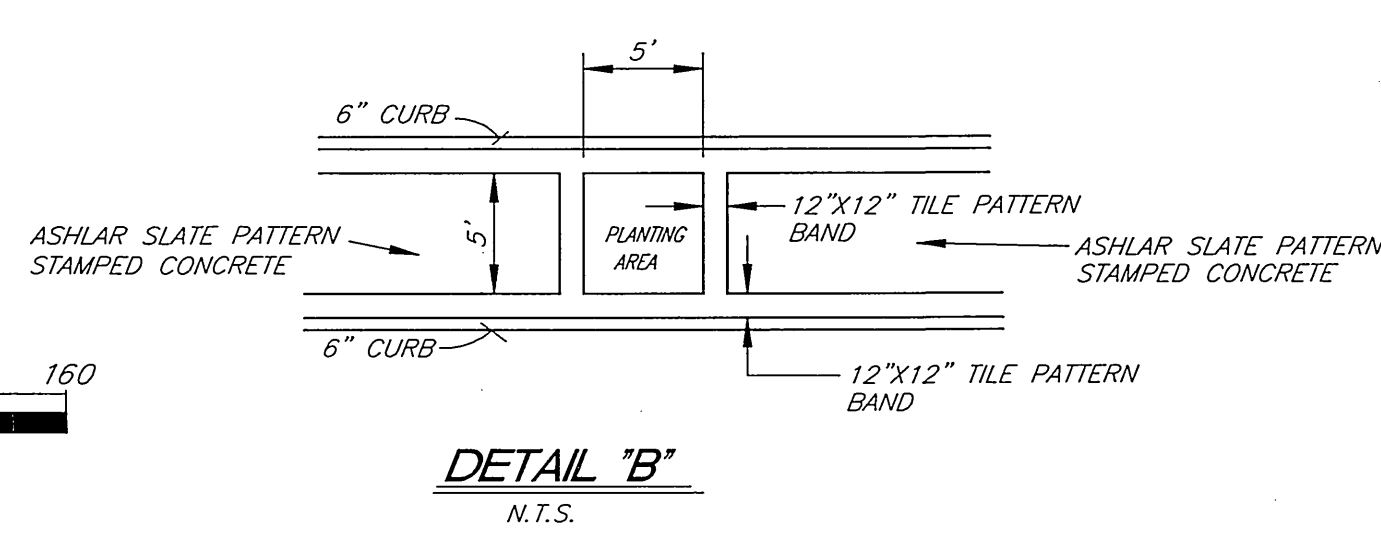
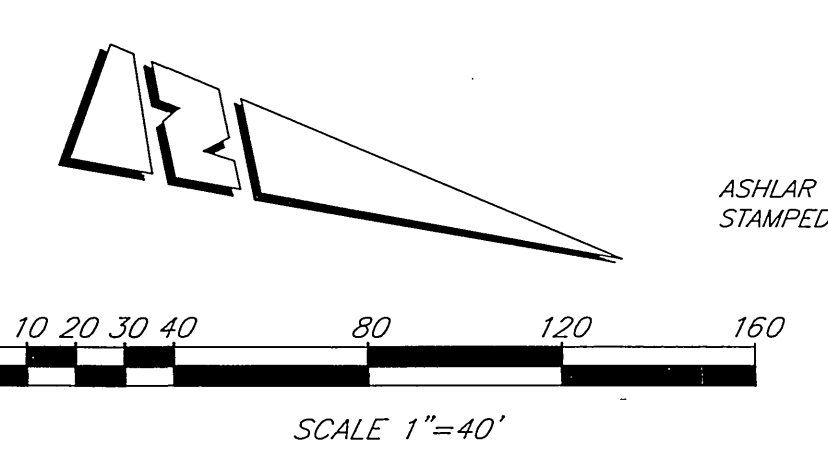
**PLANTING LEGEND**

TREES	CRAPE MYRTLE	15 GAL.
T-1 LAGERSTROEMIA INDICA	WHITE	
SHRUBS	DWARF INDIAN HAWTHORNE	5 GAL. 36" O.C.
S-1 RAPHIOLEPIS INDICA "PINKIE"		
GROUND COVERS	MEDIUM GRIND SHREDDED MULCH	3" THICK ALL PLANTERS
G-1		

**CURVE DATA**

Station	R	Δ	L	T
1	4.00'	158°11'55"	11.04'	---
2	4.00'	180°00'00"	12.57'	---

ENGINEER IN RESPONSIBLE CHARGE  
  
 PHILLIP L. HANNAWI  
 R.C.E. No. 44747 expires 3/31/06  
 DATE 9-5-03



CITY OF RIVERSIDE, CALIFORNIA  
 PUBLIC WORKS DEPARTMENT

APPROVED BY:   
 DATE: 9/1/03

**TRAUTWEIN ROAD**  
 LEFT TURN MODIFICATIONS  
 FOR GROVE COMMUNITY DR.  
 STREET PLAN

HORIZ. SCALE: 1" = 40' VERT. SCALE: 1" = 4'

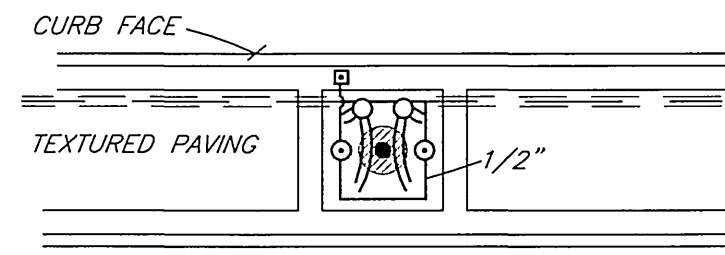
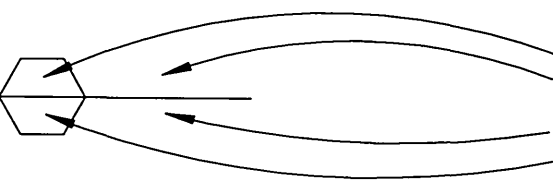
**R-3734**  
 SHEET 1 OF 2

INDEXED 12-9-04 Lft

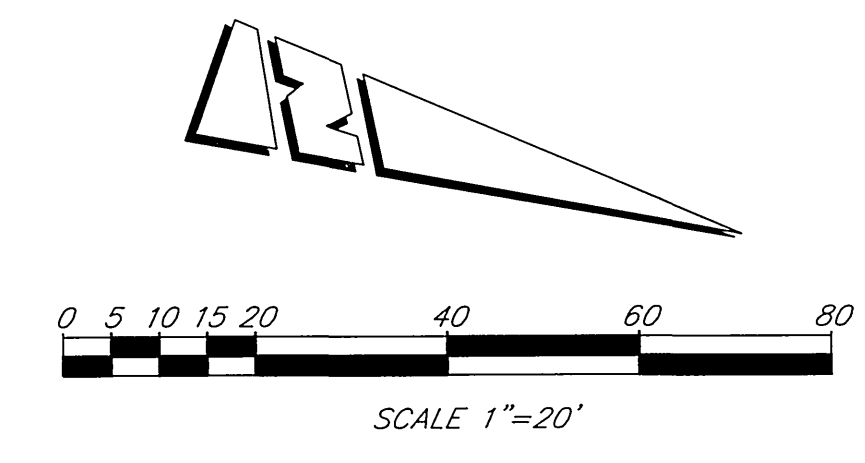
PC-4399-M/PP03-0009

**IRRIGATION LEGEND**

SYMBOL	MAKE	MODEL NO.	DESCRIPTION	P.S.I.	G.P.H.	DETAIL
	SALCO	PC6-1	PRESSURE COMPENSATED EMITTERS ONE PER THREE SHRUBS, OR LESS. EACH SHRUB TO RECEIVE 2 QT-125-PVC DISTRIBUTION TUBES WITH ONE DTS-20-400 PLASTIC TUBE STAKE AND ONE EDVC-125 EMITTER OUTLET CHECK VALVE ON EACH TUBE. ALL EMITTERS TO BE ENCASED IN A SALCO DAS-8 ACCESS SLEEVE.	45	6	B,C
	SALCO	PC6-2	PRESSURE COMPENSATED EMITTERS TWO EACH PER TREE. INSTALL WITHIN A 6" DIA. X 36" DEEP PERFORATED PIPE FILLED WITH AGGREGATE.	45	12	E
	SALCO	PC6-2	BALL VALVE WITHIN A CHRISTY B3/B3TL CONCRETE VALVE BOX AND C.I. LOCKING LID (FOR FLUSHING SYSTEM)	--	--	F
	RAINBIRD	33LDC	QUICK COUPLER	--	--	D
	RAINBIRD		PE SERIES REMOTE CONTROL VALVE (PLAN SIZED) WITH BRASS ANGLE CONTROL VALVE AND AGRICULTURAL PRODUCTS INC. MODEL 4E WYE TYPE PLASTIC FILTER. ALL WITHIN A CHRISTY CONCRETE B3/B3 VALVE BOX WITH METAL NON-HINGED LOCKING LID.	--	--	A



**DETAIL "A"**  
N.T.S.



**CONSTRUCTION LEGEND**

- 1 INSTALL 2" DIA P.V.C. SCH. 40 SLEEVING (IRRIGATION WIRES), AND 4" DIA. P.V.C. SCH 40 SLEEVING (MAIN LINE) EXTENDING 1' INTO DIRT AREA OF MEDIANS, 18" MIN COVER, TERMINATING IN BROOKS #3 PULLBOX OR CITY APPROVED EQUAL W/TRAFFIC COVER, AT EACH END. WIRES PER STD DWG 453.

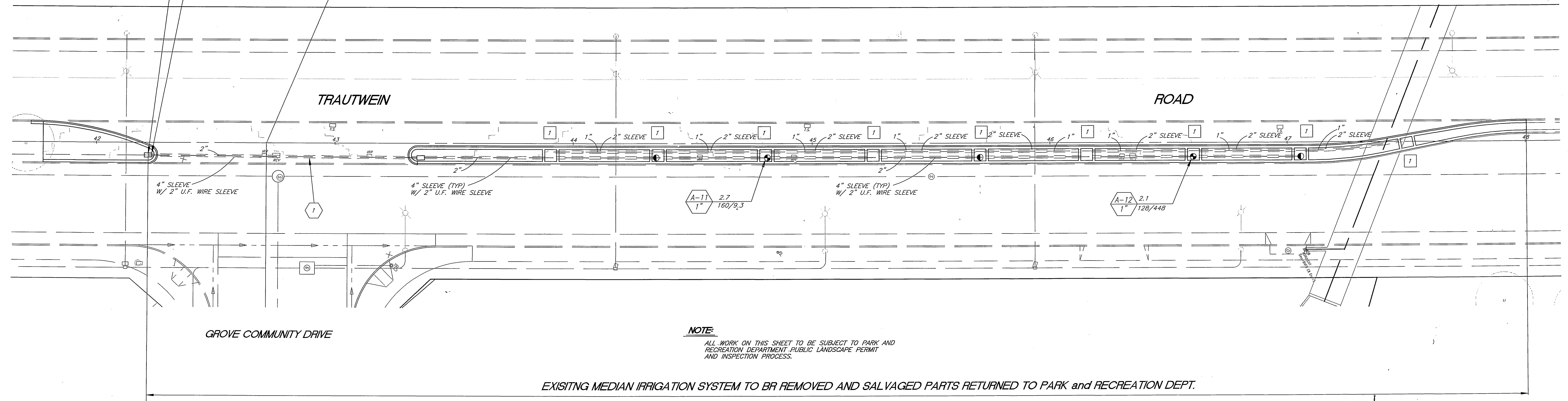
**IRRIGATION LEGEND**

- 1 CONSTRUCT 5'X5' PLANTER IRRIGATION PER DETAIL "A".

**WATER - POINT OF CONNECTION**  
AT EXISTING 3" P.V.C. SUPPLY LINE IN MEDIAN. LOCATE AND CONNECT TO EXISTING WITH BALL VALVE IN BOX.

**ELECTRICAL - POINT OF CONNECTION**  
EXISTING CONTROL WIRES TO BE LOCATED AND REUSED WITH NEW IRRIGATION SYSTEM

42+71.25 TRAUTWEIN ROAD=  
C.L. GROVE COMMUNITY DRIVE



**NOTE:**  
ALL WORK ON THIS SHEET TO BE SUBJECT TO PARK AND RECREATION DEPARTMENT PUBLIC LANDSCAPE PERMIT AND INSPECTION PROCESS.

EXISTING MEDIAN IRRIGATION SYSTEM TO BE REMOVED AND SALVAGED PARTS RETURNED TO PARK and RECREATION DEPT.

ENGINEER IN RESPONSIBLE CHARGE  
*Phillip L. Hannawi*  
PHILLIP L. HANNAWI  
R.C.E. No. 44747 expires 3/31/06  
DATE 9-5-03



DESIGNED BY: CURT  
DRAWN BY: CURT  
CHECKED BY:

CITY OF RIVERSIDE, CALIFORNIA  
PUBLIC WORKS DEPARTMENT

APPROVED BY	BY	DATE	APPROVED BY	BY	DATE
PRINCIPAL ENGINEER	<i>Phillip L. Hannawi</i>	9/5/03	CITY ENGINEER	<i>Phillip L. Hannawi</i>	9/5/03
STREET SERVICES					
TRAFFIC DIVISION					
PARKS DEPARTMENT					
CONSTRUCTION ADMIN.					

**TRAUTWEIN ROAD**  
LEFT TURN MODIFICATIONS  
FOR GROVE COMMUNITY DR.  
IRRIGATION PLAN

HORIZ. SCALE: 1" = 40' VERT. SCALE: 1" = 4'

**R-3734**  
SHEET 2 OF 2

INDEXED 12-9-04 LPH

PC-4989-M/PTP03-0009