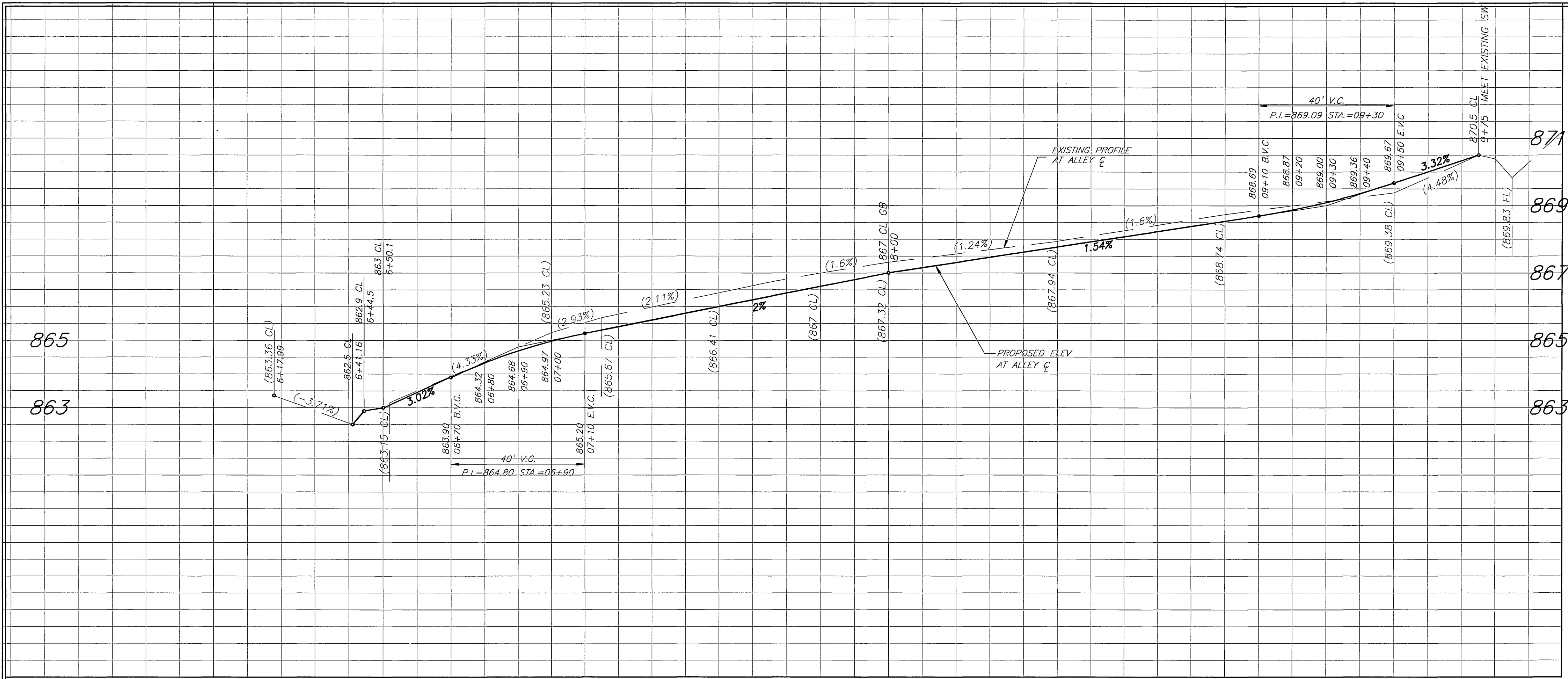


**GENERAL CONSTRUCTION NOTES**

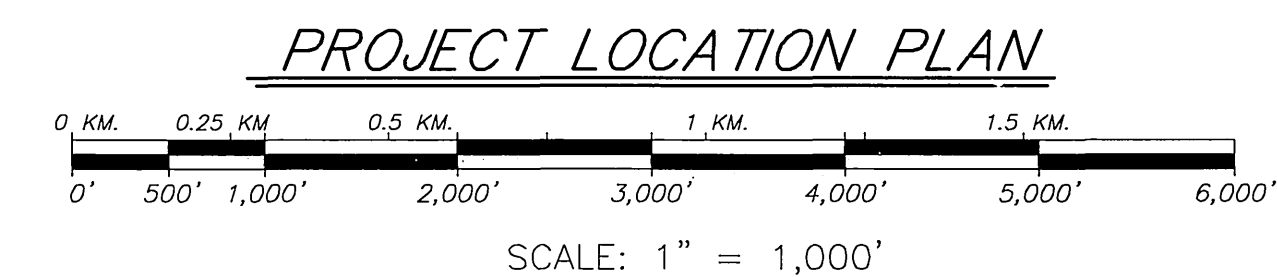
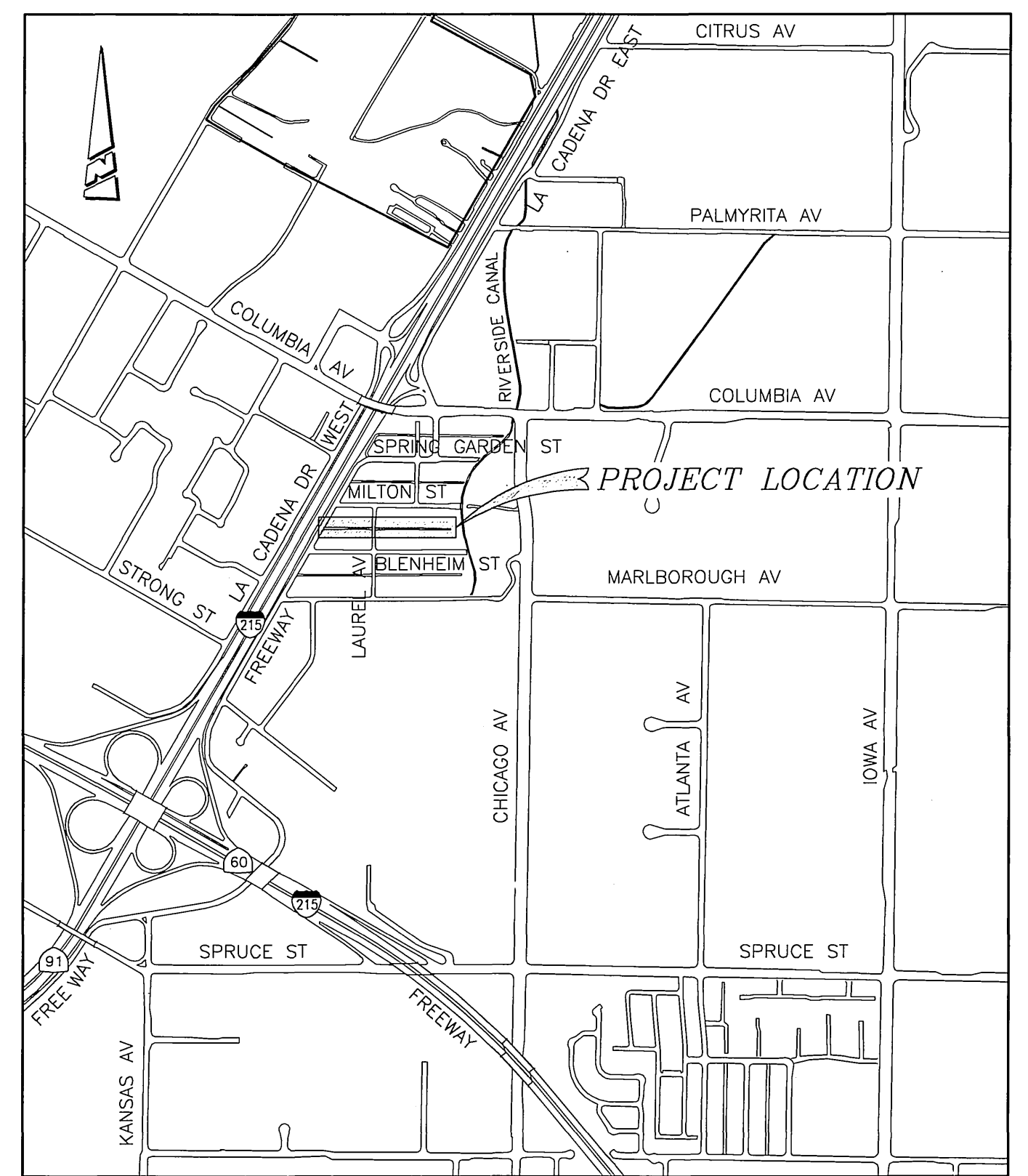
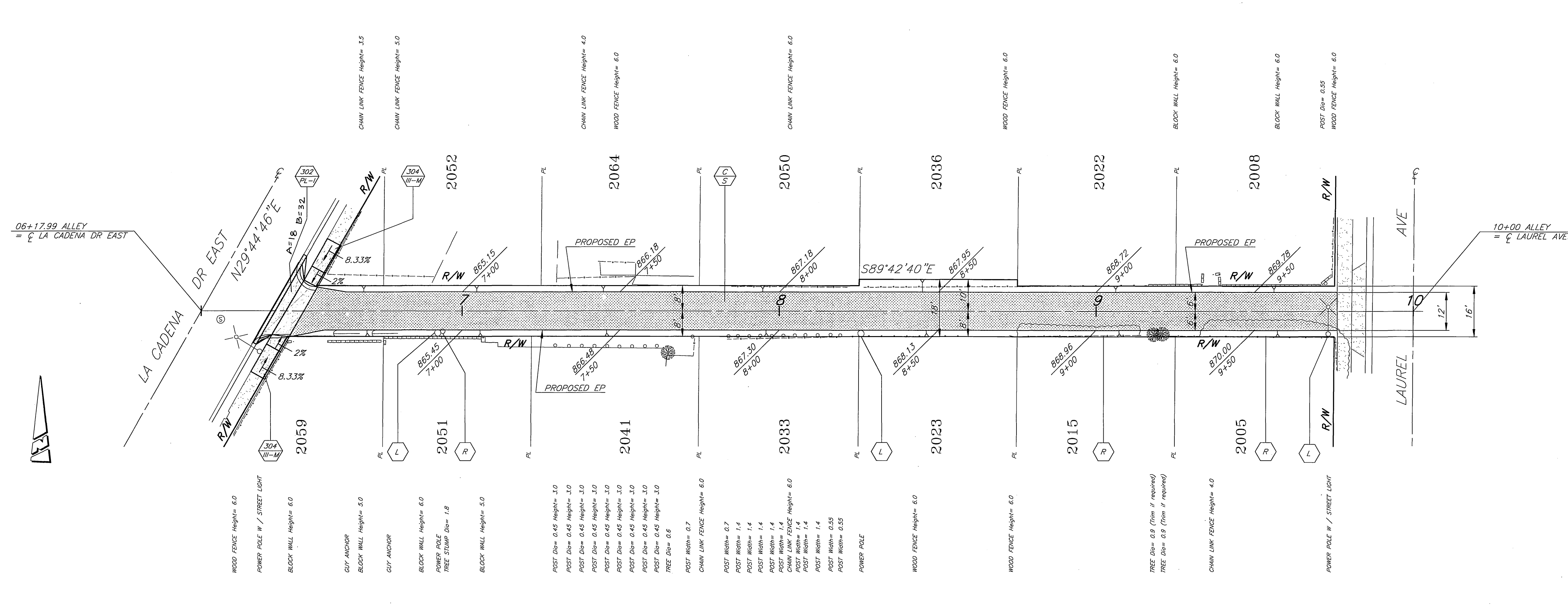
- EXISTING UTILITIES SHOWN ON THIS PLAN ARE PLOTTED FROM UTILITY RECORDS. THE CONTRACTOR IS REQUIRED TO TAKE DUE PRECAUTIONARY MEASURES TO LOCATE AND PROTECT ALL UTILITIES WHETHER OR NOT SHOWN ON THIS PLAN.
- PRIME CONTRACTORS BIDDING THIS WORK SHALL HAVE A CLASS "A" or "C-12" LICENSE.
- CONSTRUCTION SHALL BE IN ACCORDANCE WITH THE CITY OF RIVERSIDE STANDARD DRAWING AND STANDARD SPECIFICATIONS FOR PUBLIC WORKS CONSTRUCTION, 2003 EDITION.
- RIGHT OF ENTRY HAVE BEEN OBTAINED FOR WORK SHOWN OUTSIDE OF CITY RIGHT OF WAY.

**SPECIFIC CONSTRUCTION NOTES**

- NUMBERS ABOVE 100 IN A HEXAGON ON THE PLAN REFER TO THE RESPECTIVE STANDARD DRAWING AND SHALL BE CONSTRUCTED ACCORDINGLY. UNLESS MODIFICATIONS ARE NOTED ON THE PLAN OR COVER SHEET. ANY NUMBER SHOWN BELOW THE STANDARD DRAWING NUMBER INDICATES THE SPECIFIC ALTERNATE TO BE CONSTRUCTED.
- C/S CONSTRUCT STRUCTURAL SECTION OF 0.21' D.G.A.C. OVER 0.5' C.A.B. PER R-680.
- L INSTALL 2 SETS OF 3 BANDS TYPE L POLE MARKERS, 1 SET ON EACH DIRECTION, PER FIG. 6-54 OF CALTRANS TRAFFIC MANUAL.
- PIP PROTECT IN PLACE.
- R REMOVE/TRIM BUSHES, SMALL TREES AND/OR TREE STUMPS.
- 302 PL CONSTRUCT DRIVEWAY APPROACH PER STD. DWG. 302.
- 304 II-M CONSTRUCT DIRECTIONAL RAMP PER STD. DWG. 304 AND AS SHOWN ON PLAN.
- 302 CURB CONSTRUCT DRIVEWAY APPROACH PER STD. DWG. 302.



6 7 8 9 10



**ALLEY BETWEEN MILTON ST. AND BLENHEIM ST.**

**BENCHMARK:**  
P.K. NAIL AND CITY ENGINEER TAG J7-N3  
IN THE STREET LIGHT BASE AT THE NORTHWEST  
CURB RETURN OF LAUREL AVENUE AND  
MARLBOROUGH AVENUE, ADJUSTED: 1971  
ELEVATION: 868.272

**ENGINEER IN RESPONSIBLE CHARGE**  
Farshid A. Mohammadi  
R.C.E. NO. 51304 EXPIRES 6/30/2006  
DATE 1/29/09

MARK	REVISIONS	APPR	DATE

CITY OF RIVERSIDE, CALIFORNIA  
PUBLIC WORKS DEPARTMENT

APPROVED BY	BY	DATE	APPROVED BY
PRINCIPAL ENGINEER	[Signature]	1/26/09	[Signature]
STREET SERVICES	[Signature]	1/26/09	CITY ENGINEER
SURVEYOR	[Signature]	1/26/09	
INSPECTION	[Signature]	1/26/09	
TRAFFIC DIVISION			

**ALLEY IMPROVEMENTS**  
BETWEEN  
MILTON STREET AND  
BLENHEIM STREET

ACCT. NO. 9222900611-440120XX  
**R-3753**  
SHEET 1 OF 2

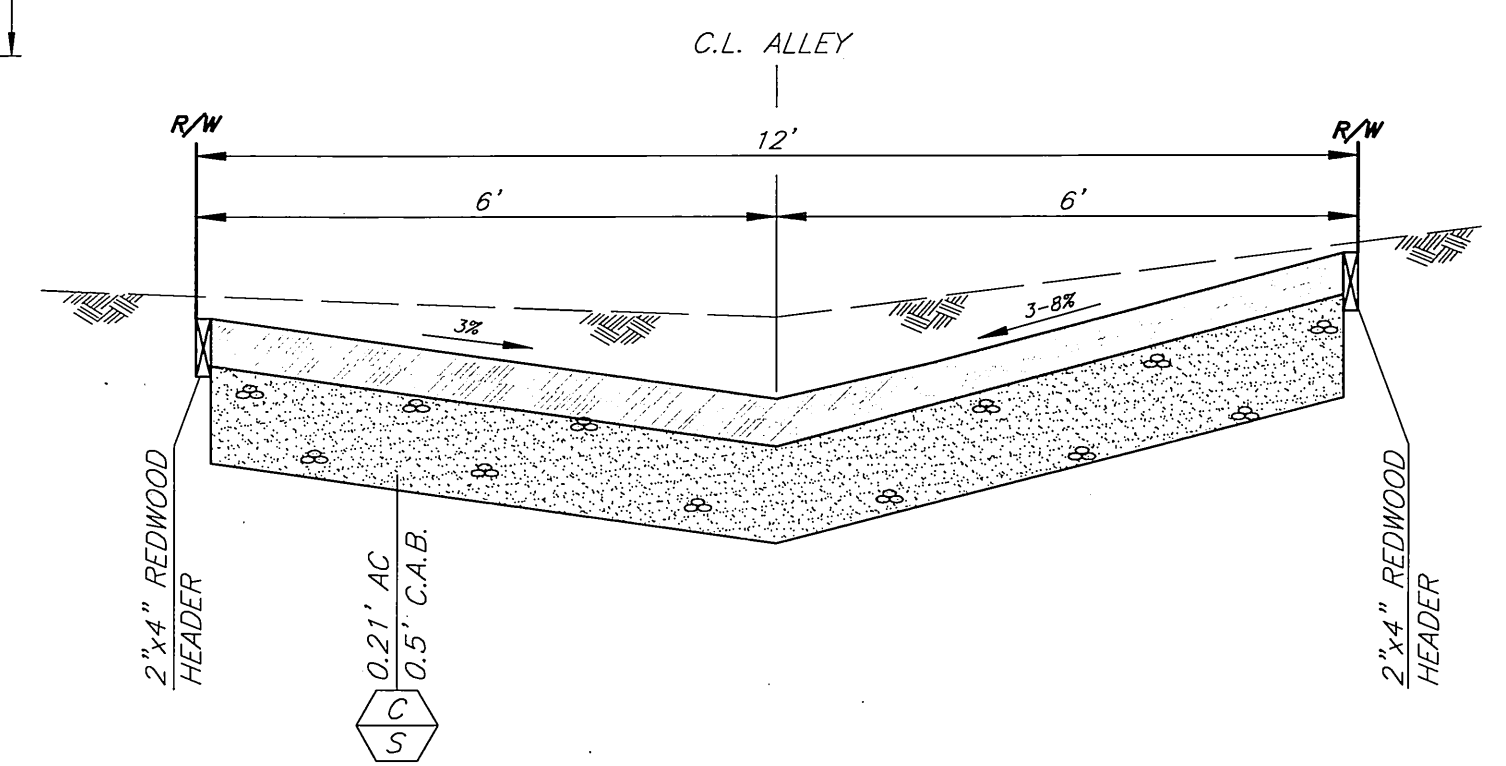
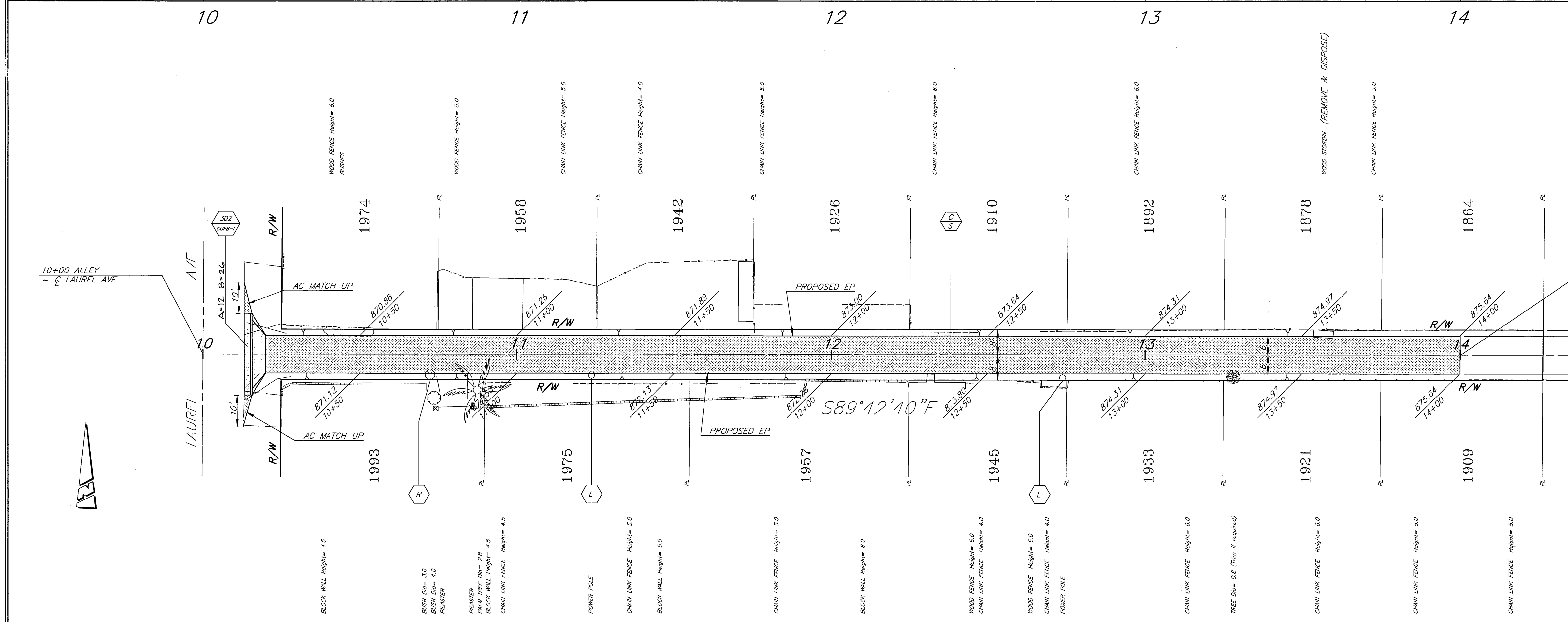
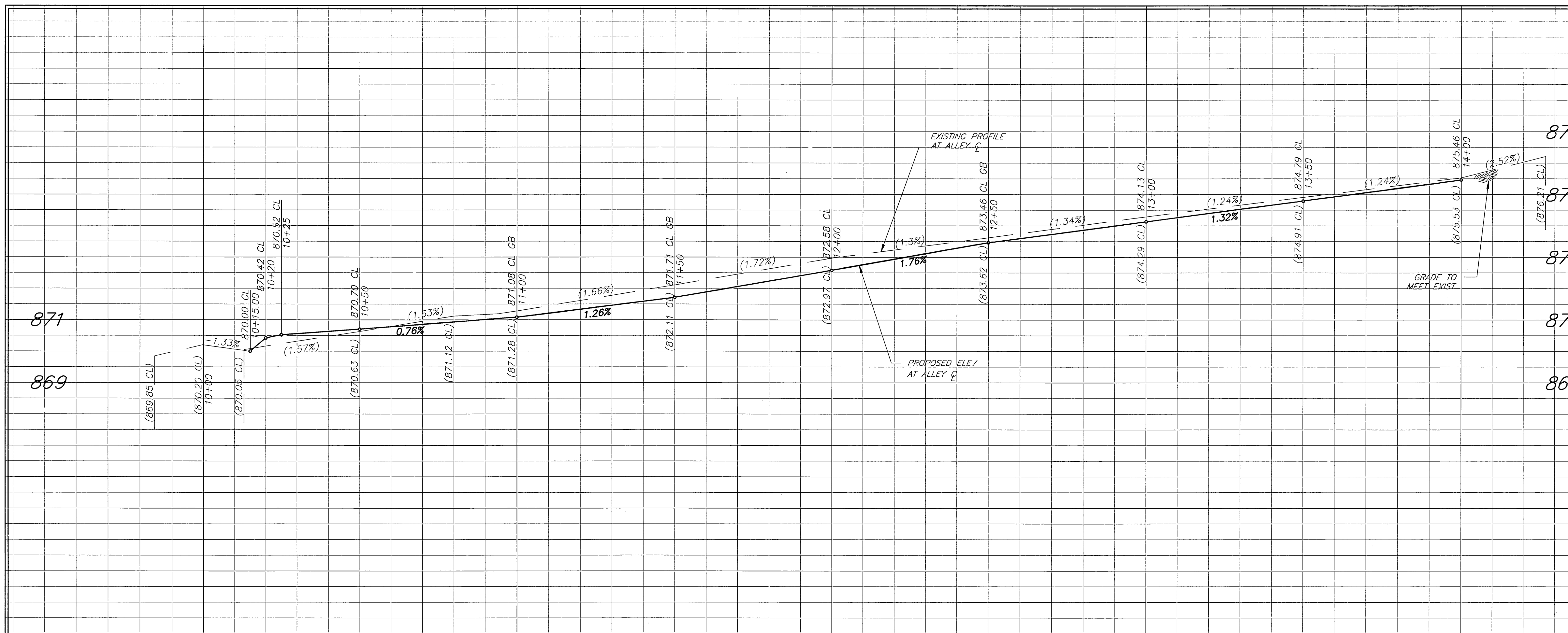
HORIZ. SCALE: 1" = 20' VERT. SCALE: 1" = 2'

### GENERAL CONSTRUCTION NOTES

- 1 EXISTING UTILITIES SHOWN ON THIS PLAN ARE PLOTTED FROM UTILITY RECORDS. THE CONTRACTOR IS REQUIRED TO TAKE DUE PRECAUTIONARY MEASURES TO LOCATE AND PROTECT ALL UTILITIES WHETHER OR NOT SHOWN ON THIS PLAN.
- 2 PRIME CONTRACTORS BIDDING THIS WORK SHALL HAVE A CLASS "A" or "C-12" LICENSE.
- 3 CONSTRUCTION SHALL BE IN ACCORDANCE WITH THE CITY OF RIVERSIDE STANDARD DRAWING AND STANDARD SPECIFICATIONS FOR PUBLIC WORKS CONSTRUCTION, 2003 EDITION.
- 4 RIGHT OF ENTRY HAVE BEEN OBTAINED FOR WORK SHOWN OUTSIDE OF CITY RIGHT OF WAY.

### SPECIFIC CONSTRUCTION NOTES

- NUMBERS ABOVE 100 IN A HEXAGON ON THE PLAN REFER TO THE RESPECTIVE STANDARD DRAWING AND SHALL BE CONSTRUCTED ACCORDINGLY. UNLESS MODIFICATIONS ARE NOTED ON THE PLAN OR COVER SHEET. ANY NUMBER SHOWN BELOW THE STANDARD DRAWING NUMBER INDICATES THE SPECIFIC ALTERNATE TO BE CONSTRUCTED.
- CONSTRUCT STRUCTURAL SECTION OF 0.21' D.G.A.C. OVER 0.5' C.A.B. PER R-680.
- INSTALL 2 SETS OF 3 BANDS TYPE L POLE MARKERS, 1 SET ON EACH DIRECTION, PER FIG. 6-54 OF CALTRANS TRAFFIC MANUAL.
- PROTECT IN PLACE.
- REMOVE/TRIM BUSHES, SMALL TREES AND/OR TREE STUMPS.
- CONSTRUCT DRIVEWAY APPROACH PER STD. DWG. 302.
- CONSTRUCT DIRECTIONAL RAMP PER STD. DWG. 304 AND AS SHOWN ON PLAN.
- CONSTRUCT DRIVEWAY APPROACH PER STD. DWG. 302.



### ALLEY BETWEEN MILTON ST. AND BLENHEIM ST.

MODIFIED ALLEY TYPICAL SECTION-STD. DWG. 110 (N7S)

ENGINEER IN RESPONSIBLE CHARGE  
**Farshid A. Mohammadi**  
 FARSHID A. MOHAMMADI  
 R.C.E. NO. 51304 EXPIRES 6/30/2006  
 DATE 1/29/04



DESIGNED BY	ABE	DRAWN BY	GMA	CHECKED BY	
MARK		REVISIONS		APPR.	DATE

CITY OF RIVERSIDE, CALIFORNIA PUBLIC WORKS DEPARTMENT		
APPROVED BY	BY	DATE
PRINCIPAL ENGINEER	<i>John Boyd</i>	2/4/04
STREET SERVICES		2/4/04
SURVEYOR		2/4/04
INSPECTION		2/4/04
TRAFFIC DIVISION		2/4/04

ALLEY IMPROVEMENTS  
 BETWEEN  
 MILTON STREET AND  
 BLENHEIM STREET

ACCT. NO. 9222900611-440120XX  
**R-3753**  
 SHEET 2 OF 2

HORIZ. SCALE: 1" = 20' VERT. SCALE: 1" = 2'