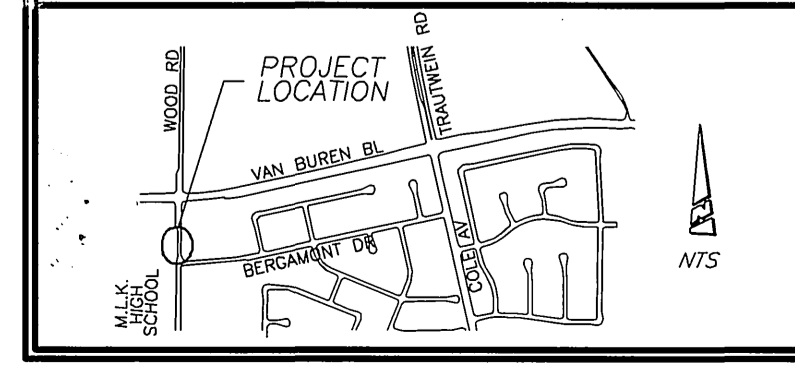


GENERAL CONSTRUCTION NOTES

- EXISTING UTILITIES, SHOWN ON THIS PLAN, ARE PLOTTED FROM UTILITY RECORDS. THE CONTRACTOR IS REQUIRED TO TAKE DUE PRECAUTIONARY MEASURES TO LOCATE AND PROTECT ALL UTILITIES WHETHER OR NOT SHOWN ON THIS PLAN.
- CONSTRUCTION SHALL BE IN ACCORDANCE WITH THE CITY OF RIVERSIDE STANDARD DRAWINGS AND STANDARD SPECIFICATIONS FOR PUBLIC WORKS CONSTRUCTION, 2003 EDITION.
- ALL UTILITY PULL BOXES/VAULTS AFFECTED BY CONSTRUCTION SHALL BE ADJUSTED TO THE FINISHED GRADES BY THE CONTRACTOR.
- REMOVE AND REPLACE DAMAGED AC PAVEMENT WITH APPROX. 0.8' FULL DEPTH AC BETWEEN STA. 6+98 & 9+60 AS MARKED BY THE ENGINEER IN THE FIELD.

SPECIFIC CONSTRUCTION NOTES

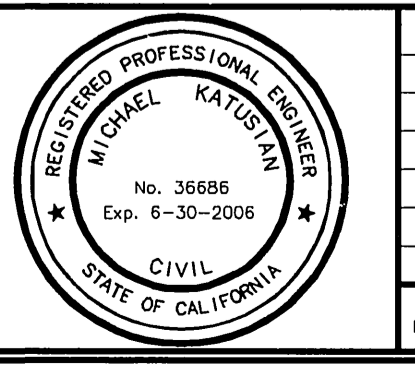
- NUMBERS ABOVE 100 IN A HEXAGON ON THE PLAN REFER TO THE RESPECTIVE STANDARD DRAWING AND SHALL BE CONSTRUCTED ACCORDINGLY. UNLESS MODIFICATIONS ARE NOTED ON THE PLAN OR COVER SHEET. ANY NUMBER SHOWN BELOW THE STANDARD DRAWING NUMBER INDICATES THE SPECIFIC ALTERNATE TO BE CONSTRUCTED.
- 0.1' MINIMUM DGAC OVERLAY FROM STA. 6+98 TO STA. 9+60.
- ADJ. MH: ADJUSTING ELECTRICAL VAULT MANHOLE OR SEWER MANHOLE TO THE FINISHED GRADE.
- ADJ. CV: ADJUSTING WATER GATE VALVE TO THE FINISHED GRADE.
- E: POWER POLE TO BE RELOCATED BY THE EDISON POWER COMPANY.
- GOLD MILL EXIST. AC TO A DEPTH OF 0.3' OR TO THE EXISTING BASE, WHICHEVER IS LESS. (TYPE 3 GOLD MILLING).
- R: REMOVE CITRUS TREE (DIAMETER LARGER THAN 6").
- REL: RELOCATE STREET SIGNS.
- S: REMOVE EXISTING AC AND RECONSTRUCT STRUCTURAL SECTION OF 0.5' AC OVER 0.75' BASE (T.I. = 8.5 AND R-VALUE = 34).
- W: 12" WATERMAIN OR OTHER WATER FACILITIES TO BE RELOCATED BY THIS CONTRACT. (SEE PLAN R-3788W).



IMPORTANT NOTICE
 Section 4216/4217 of the Government Code requires a Dig Alert Identification Number to be issued before a "Normal to Excavate" will be valid. For your Dig Alert I.D. Number call CALL TOLL FREE 1-800-227-2600

BENCHMARK: E8-G3
 PK. NAIL & CITY ENGINEER TAG IN THE TOP OF THE SIDEWALK OVER THE EASTERLY WALL OF A CATCH BASIN ALONG THE SOUTHERLY CURB OF VAN BUREN BLVD. AND 700 FEET EASTERLY OF WOOD ROAD.
 ELEV. - 1642.465

ENGINEER IN RESPONSIBLE CHARGE
 MICHAEL KATUSIAN
 R.C.E. No. 36886 expires 6/30/2006
 DATE 11/9/04



DESIGNED BY: FYL	DRAWN BY: FYL	CHECKED BY: MK, PH
APPROVED BY: [Signature]	DATE: 4/15/05	

CITY OF RIVERSIDE, CALIFORNIA
 PUBLIC WORKS DEPARTMENT

WOOD ROAD WIDENING
 (W'LY SIDE BETWEEN BERGAMONT DR. AND VAN BUREN BOULEVARD)

ACCT. NO.: 9579327152-440223XX
R-3788
 SHEET 1 OF 1
 FILE: COMMON/COMPLETE/R3788