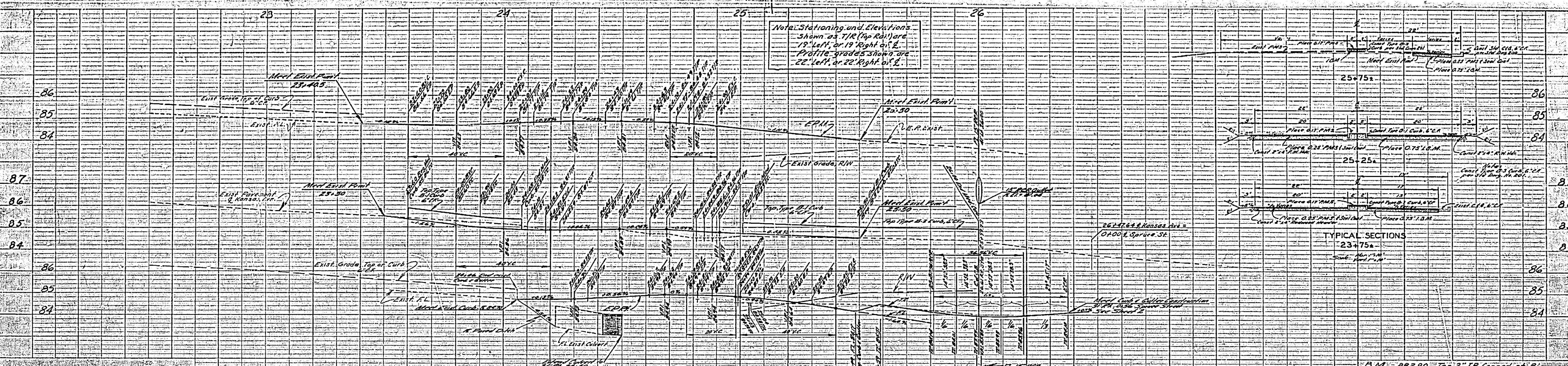


Notes: Stationing and Elevations
 Stationing as shown on plan
 18' width of 18' Right of Way
 Profile grades shown are
 22' left or 22' Right of E.

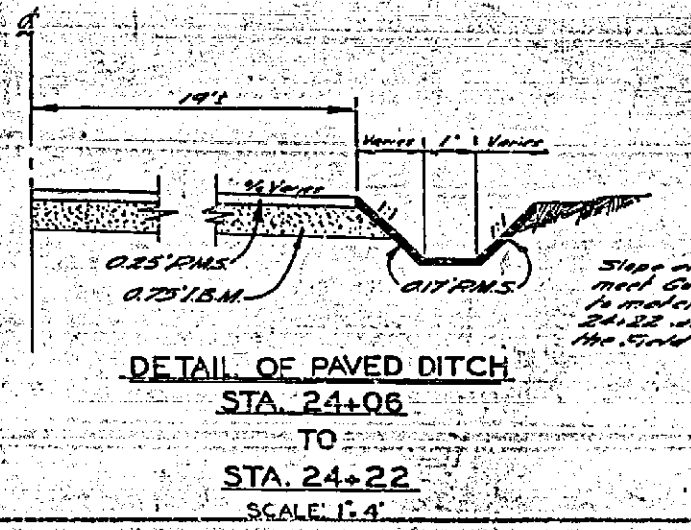
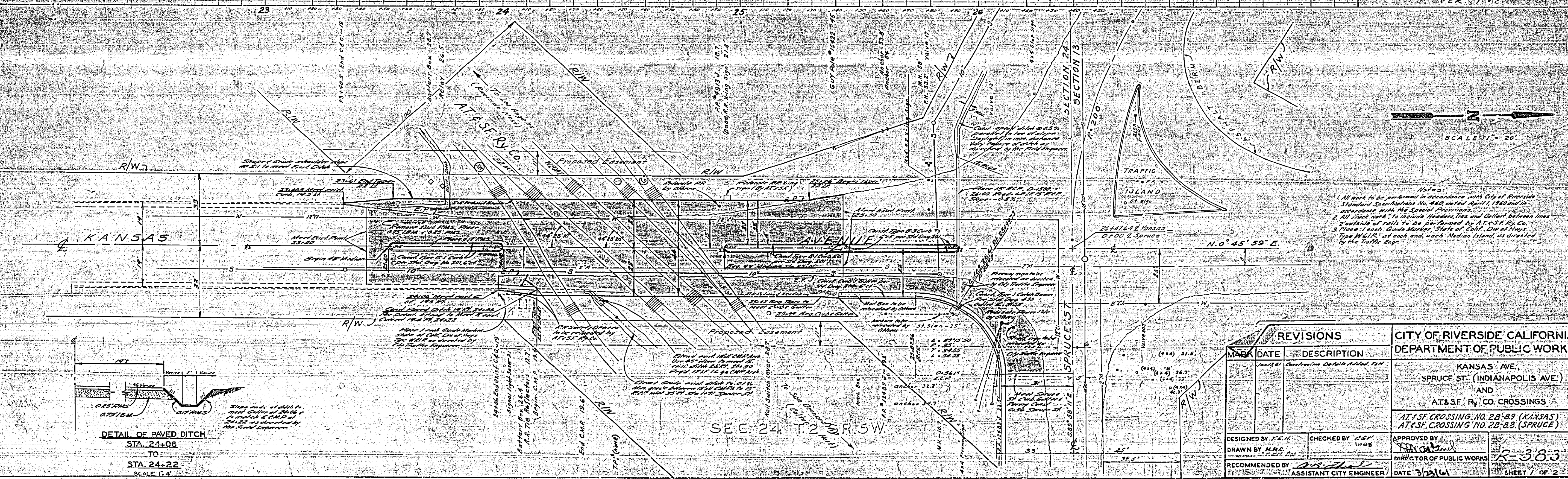


TYPICAL SECTIONS
 23+75a
 25+25a

B.M. - 882.90 - Top 2" I.P. capped at P.I.
 Kansas Ave and Spruce St.

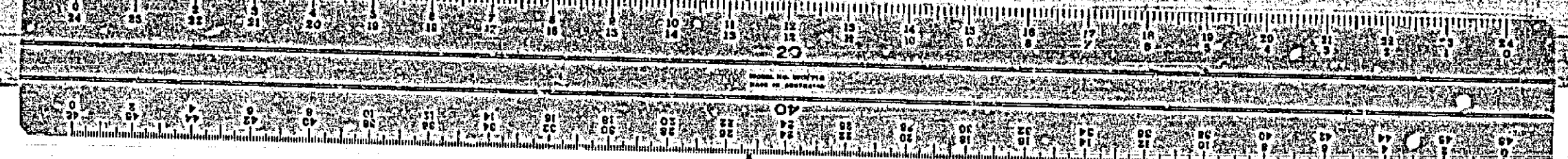
FB - 534/73 - SEC/77 - 1/30/69

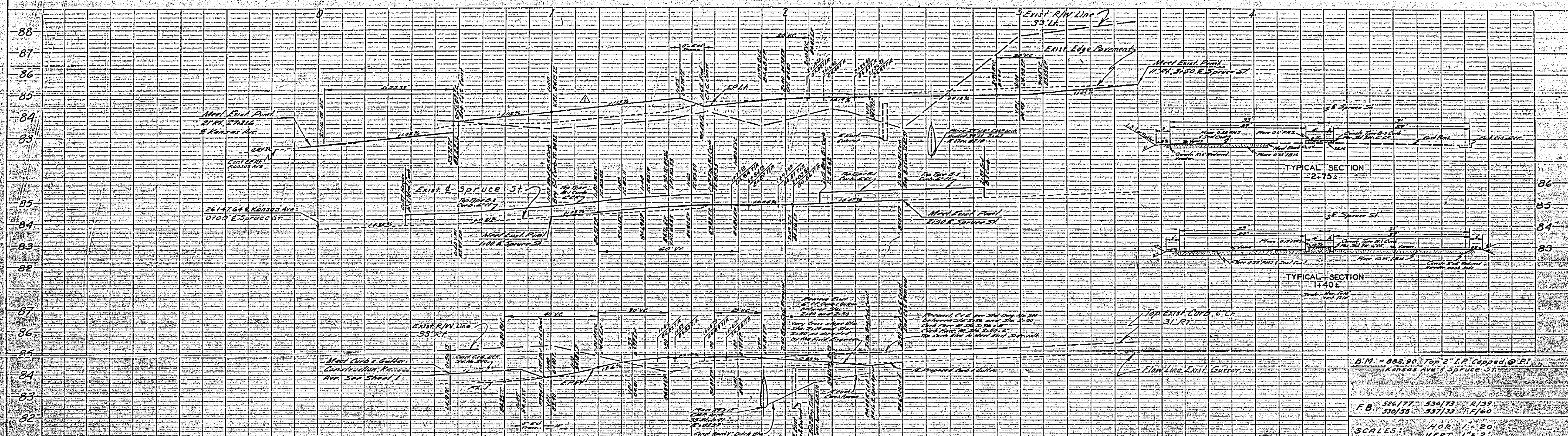
SCALES: HOR: 1" = 20'
 VER: 1" = 2'



REVISIONS			CITY OF RIVERSIDE CALIFORNIA DEPARTMENT OF PUBLIC WORKS
MARK	DATE	DESCRIPTION	
			KANSAS AVE, SPRUCE ST. (INDIANAPOLIS AVE.) AND AT&SF RY. CO. CROSSINGS AT&SF CROSSING NO. 28-89 (KANSAS) AT&SF CROSSING NO. 28-88 (SPRUCE)
DESIGNED BY T.E.H.		CHECKED BY C.W.G.	APPROVED BY ASSISTANT CITY ENGINEER
DRAWN BY M.R.C.		DATE 3/2/69	
RECOMMENDED BY			R-363 SHEET 1 OF 2

Notes:
 1. All work to be performed in accordance with City of Riverside Standard Specifications No. 480 dated April, 1968 and in accordance with the Special Provisions.
 2. All work shall be in accordance with the Standard Specifications and the Standard Specifications for the State of California.
 3. Place 1 inch Grade Marker, State of Calif., Div. of Highways, Type W-12, at each end, and a 1/2 inch Red on Island, as directed by the Traffic Dept.





PROFILE

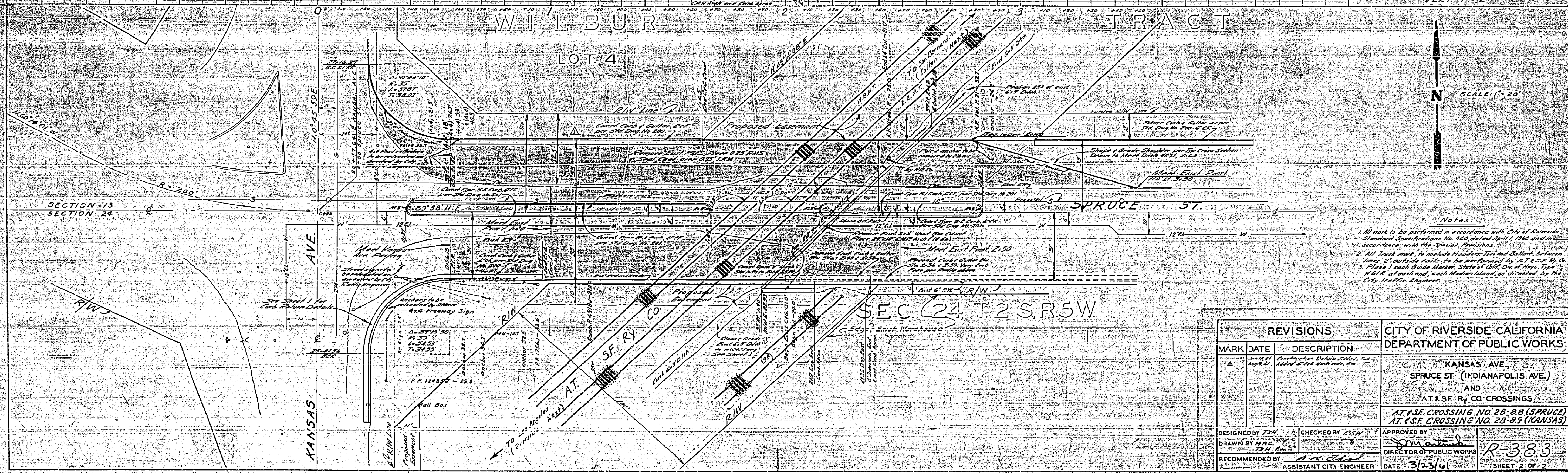
NOTE: SEE SHEET 26-88 FOR VERTICAL CURVE DATA.

VERT. SCALE: 1" = 2'

B.M. = 882.90 Top 2" I.P. Capped @ P.I.
Kansas Ave. @ Spruce St.

F.B. 526/77 534/73 R/39
530/55 537/33 T/60

SCALES: HOR. 1" = 20'
VERT. 1" = 2'



- Notes:
- All work to be performed in accordance with City of Riverside Standard Specifications No. 460, dated April 1, 1930 and in accordance with the Special Provisions.
 - All track work to include Headways, Trains and Ballast, between lines of outside curbs to be constructed by A.T. & S.F. Ry. Co.
 - Place 1 each Guide Marker, State of Cal. Div. of High. Insp. Type W.G.R. at each end, each Median Island, as directed by the City Public Engineer.

REVISIONS			CITY OF RIVERSIDE - CALIFORNIA DEPARTMENT OF PUBLIC WORKS
MARK	DATE	DESCRIPTION	
Δ	Aug 25	Construction Details Added for 1935 & 1936 work on this	KANSAS AVE. @ SPRUCE ST. (INDIANAPOLIS AVE.) AND AT & S.F. RY. CO. CROSSINGS AT S.F. CROSSING NO. 28-88 (SPRUCE) AT S.F. CROSSING NO. 28-89 (KANSAS)

DESIGNED BY T.H.N.	CHECKED BY C.G.W.	APPROVED BY <i>[Signature]</i> DIRECTOR OF PUBLIC WORKS	R-38.3 SHEET 2 OF 2
DRAWN BY H.A.C. 7/21/35	RECOMMENDED BY <i>[Signature]</i> ASSISTANT CITY ENGINEER	DATE: 3/23/36	

