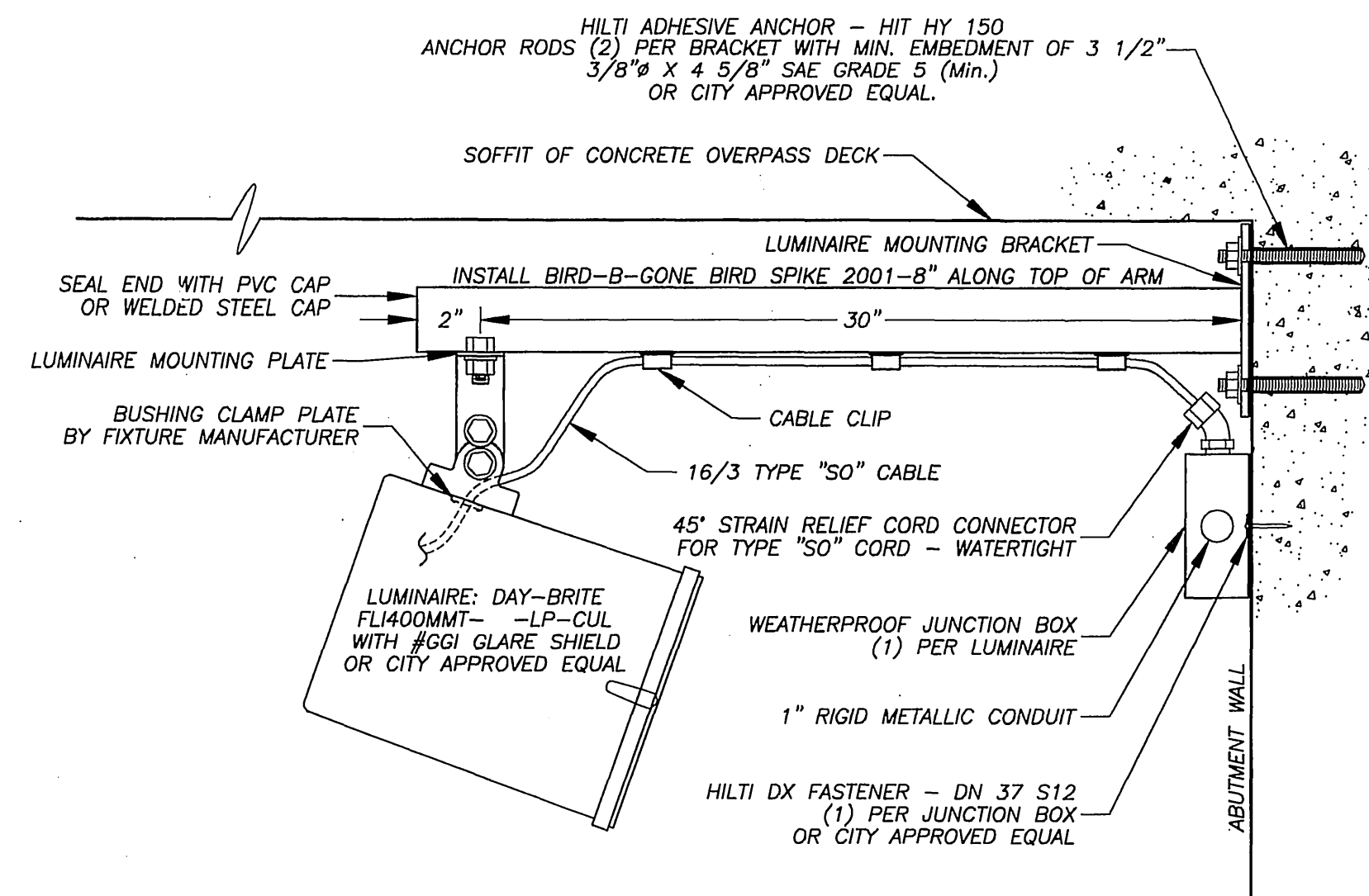
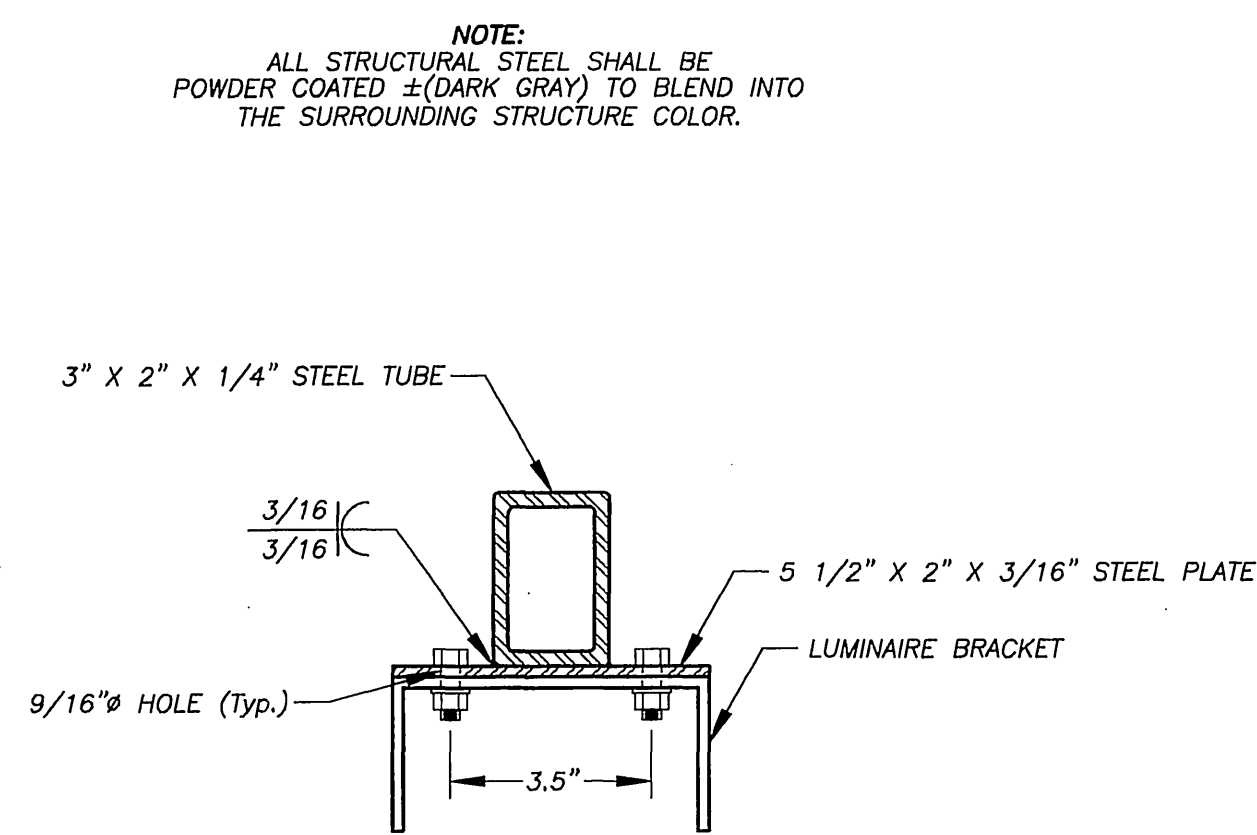


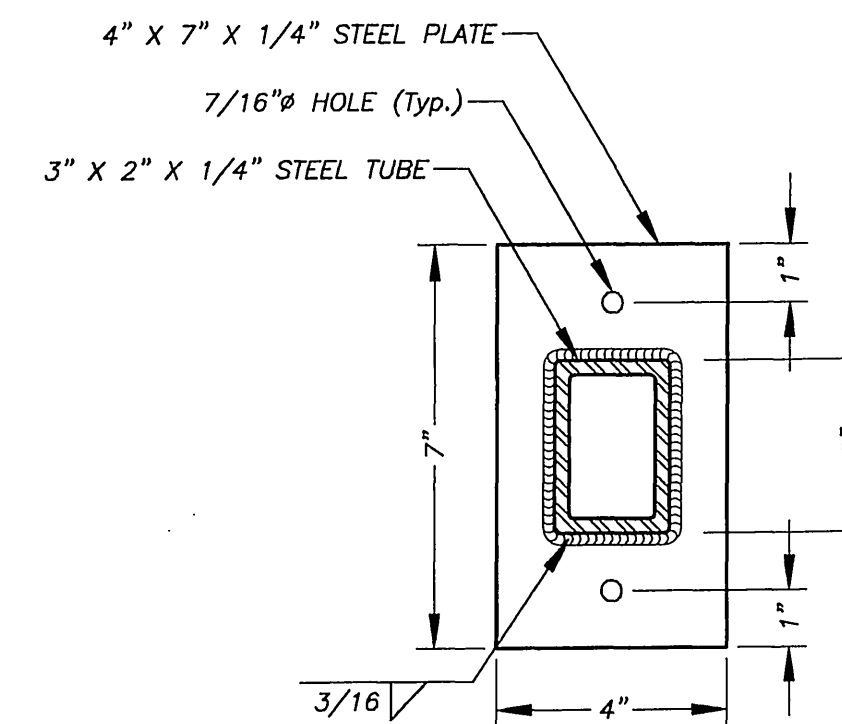
DETAIL "A" TYPICAL



LUMINAIRE MOUNTING DETAIL



LUMINAIRE MOUNTING PLATE

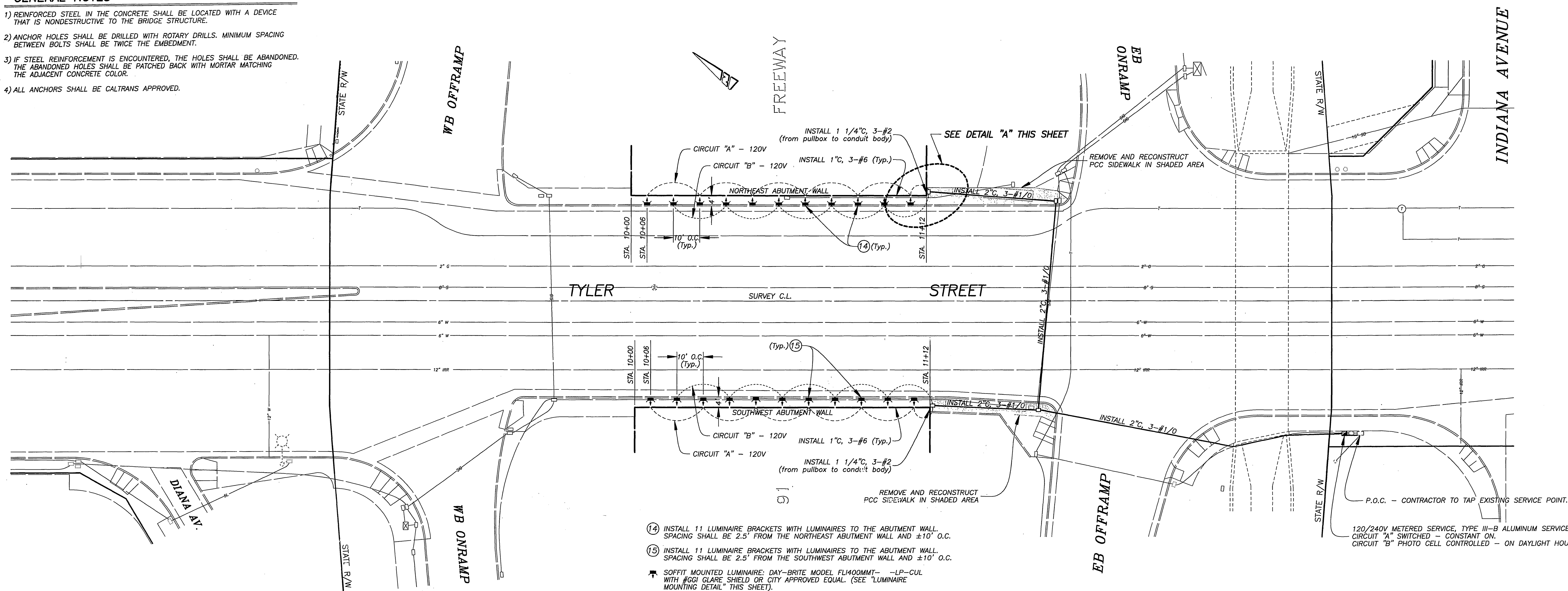


LUMINAIRE MOUNTING BRACKET

BRIDGE LIGHTING

GENERAL NOTES

- 1) REINFORCED STEEL IN THE CONCRETE SHALL BE LOCATED WITH A DEVICE THAT IS NONDESTRUCTIVE TO THE BRIDGE STRUCTURE.
- 2) ANCHOR HOLES SHALL BE DRILLED WITH ROTARY DRILLS. MINIMUM SPACING BETWEEN BOLTS SHALL BE TWICE THE EMBEDMENT.
- 3) IF STEEL REINFORCEMENT IS ENCOUNTERED, THE HOLES SHALL BE ABANDONED. THE ABANDONED HOLES SHALL BE PATCHED BACK WITH MORTAR MATCHING THE ADJACENT CONCRETE COLOR.
- 4) ALL ANCHORS SHALL BE CALTRANS APPROVED.



LUMINAIRE LOCATION PLAN

SCALE: 1" = 20'

IMPORTANT NOTICE
Section 4216/4217 of the Government Code requires a Dig Alert Identification Number to be issued before a "Permit to Excavate" will be valid. For your Dig Alert I.D. Number call CALL TOLL FREE 48 HOURS BEFORE YOU DIG UNDERGROUND SERVICE ALERT 1-800-227-2600

ENGINEER IN RESPONSIBLE CHARGE
DANIEL A. CIACHELLA
R.C.E. No. 53169 expires 6/30/07
DATE: 09/27/05

REGISTERED PROFESSIONAL ENGINEER
DANIEL A. CIACHELLA
No. 53169
Exp. 6/30/07
CIVIL
STATE OF CALIFORNIA

MARK	REVISIONS	APPR.	DATE

DESIGNED BY: DJS DRAWN BY: DJS CHECKED BY: _____

CITY OF RIVERSIDE, CALIFORNIA
PUBLIC WORKS DEPARTMENT

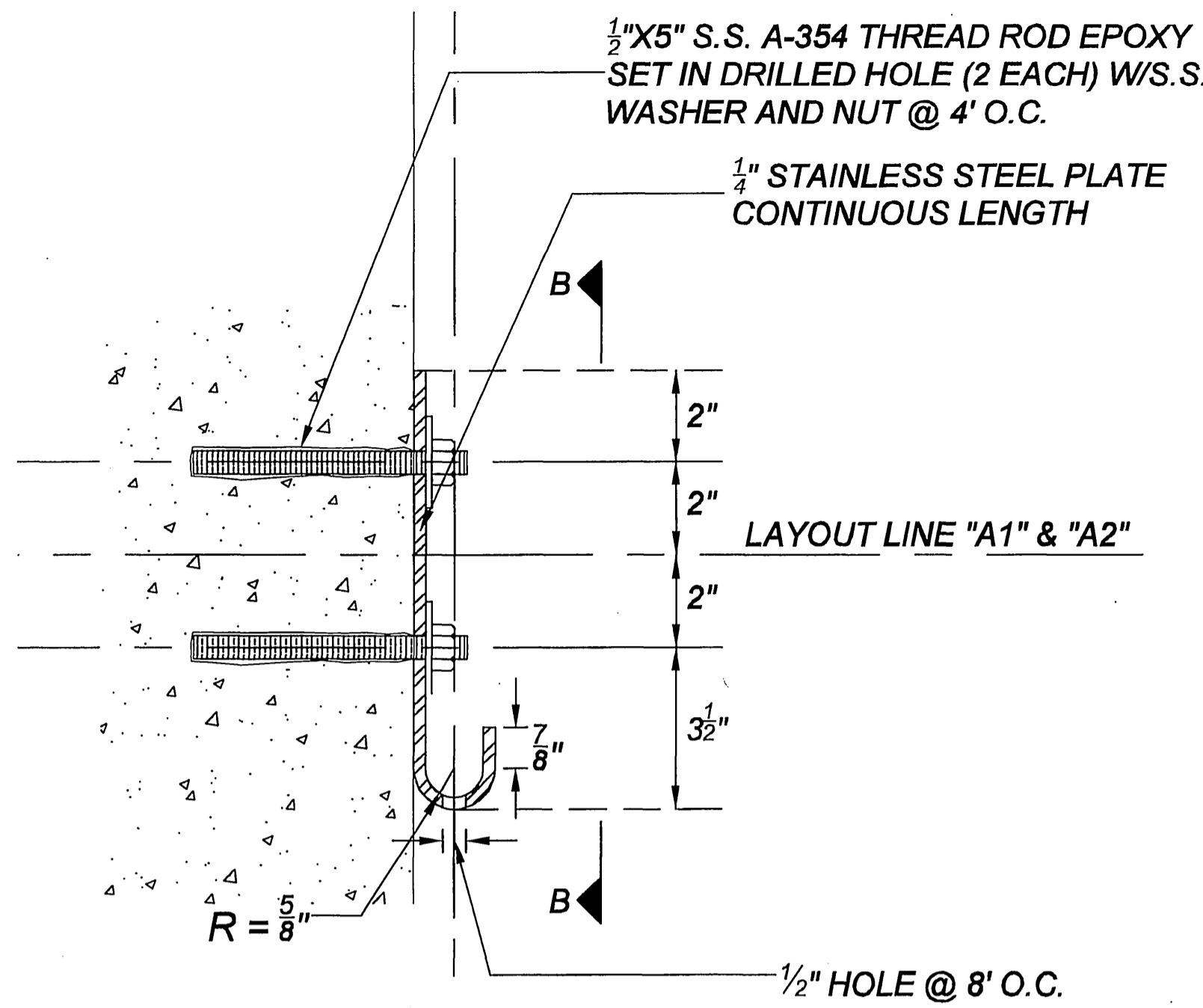
APPROVED BY	BY	DATE	APPROVED BY
PRINCIPAL ENGINEER			
CONST. CONTRACT ADMIN.			
STREET SERVICES			
SURVEYOR			
TRAFFIC DIVISION			
PARKS DEPARTMENT			

DATE: 9/27/05

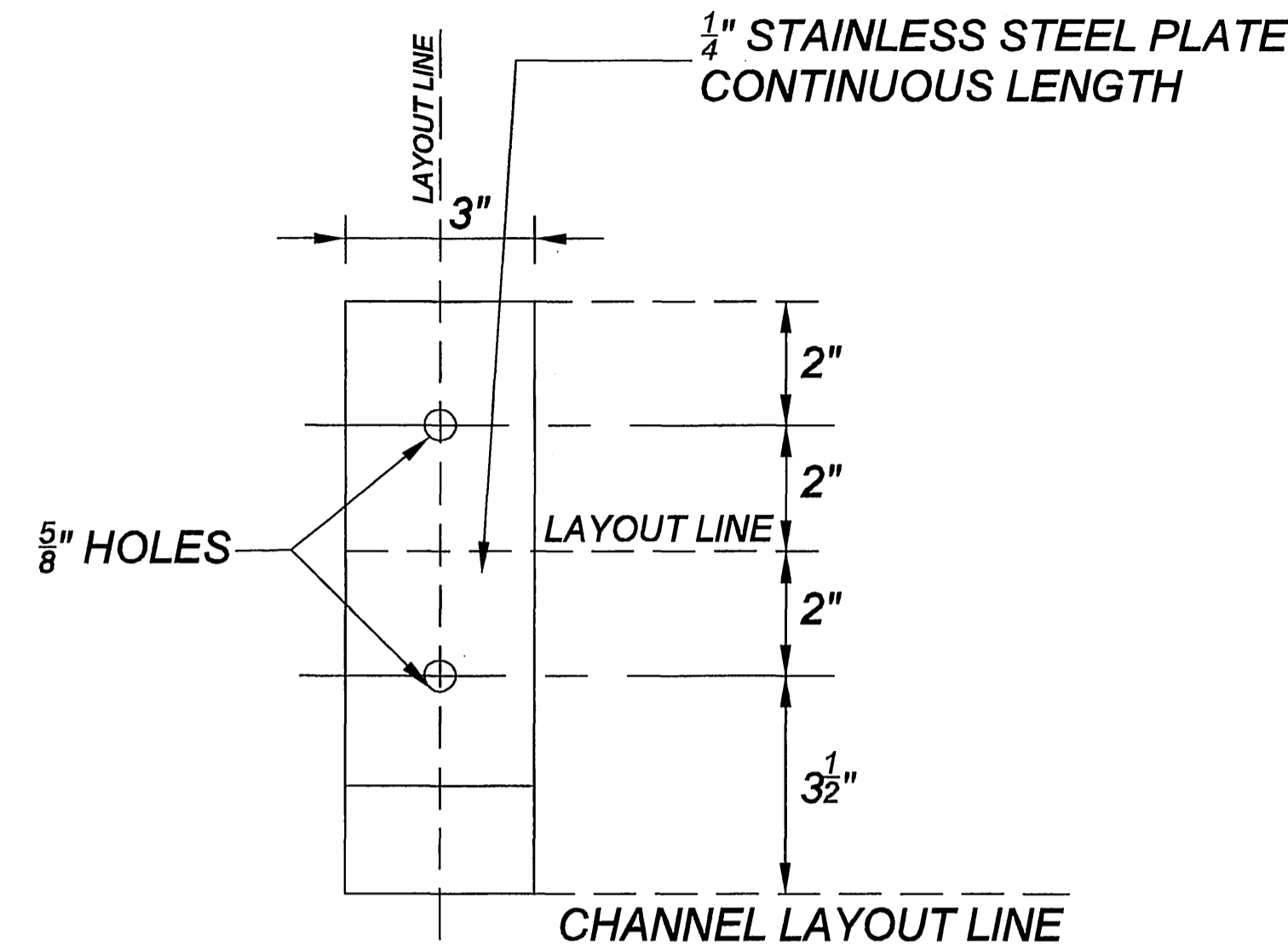
TYLER STREET MURAL LIGHTING
Tyler Street at 91 Freeway
HORIZONTAL SCALE: 1" = 20' VERTICAL SCALE: 1" = 2'

ACCT. NO. 9771800885 42100000
R-3866
SHEET 1 OF 3
Caltrans Permit No. 08-05-6-IP-0745 08-RIV-91-13.04

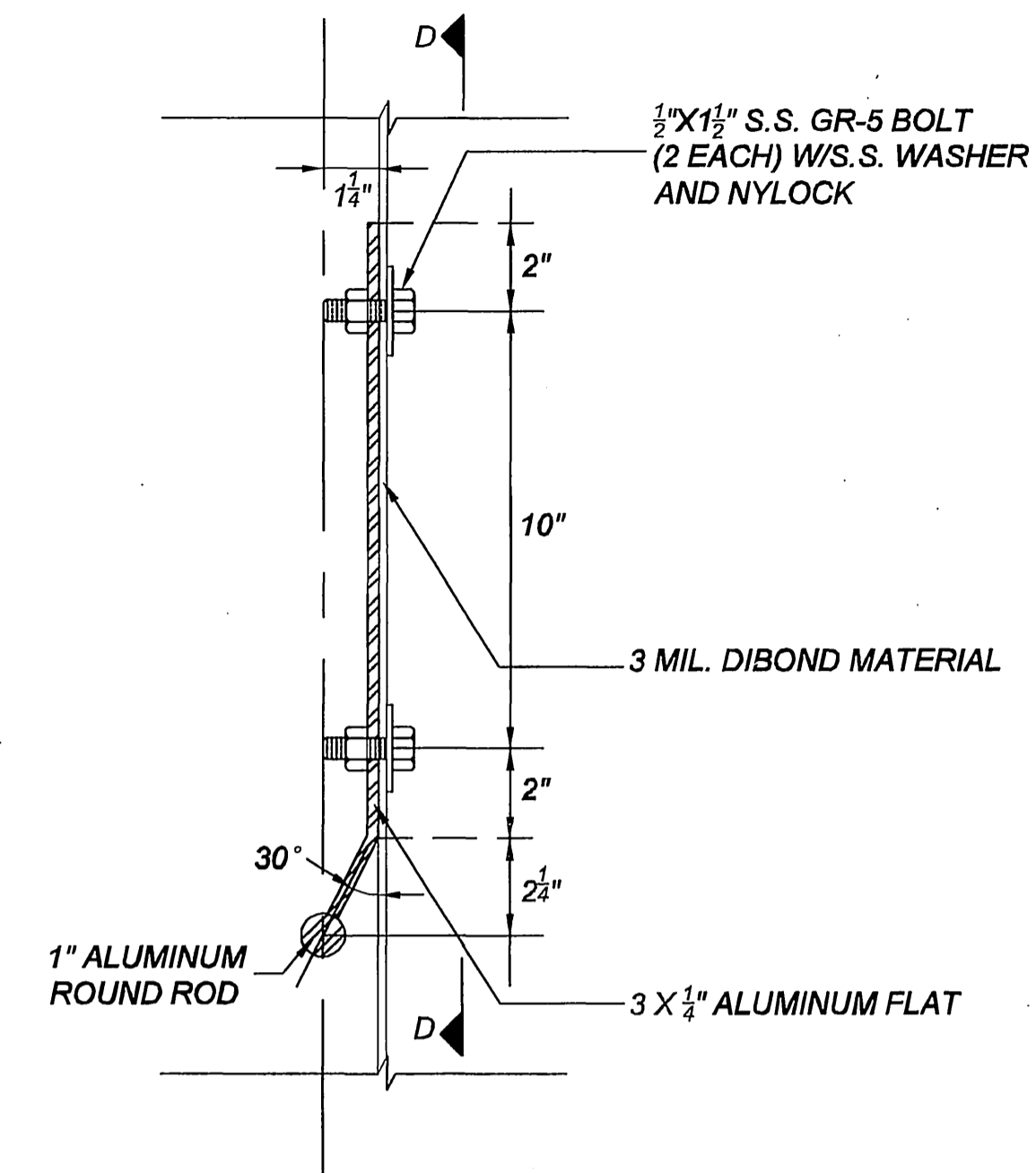
INDEXED 9-29-05 LFK



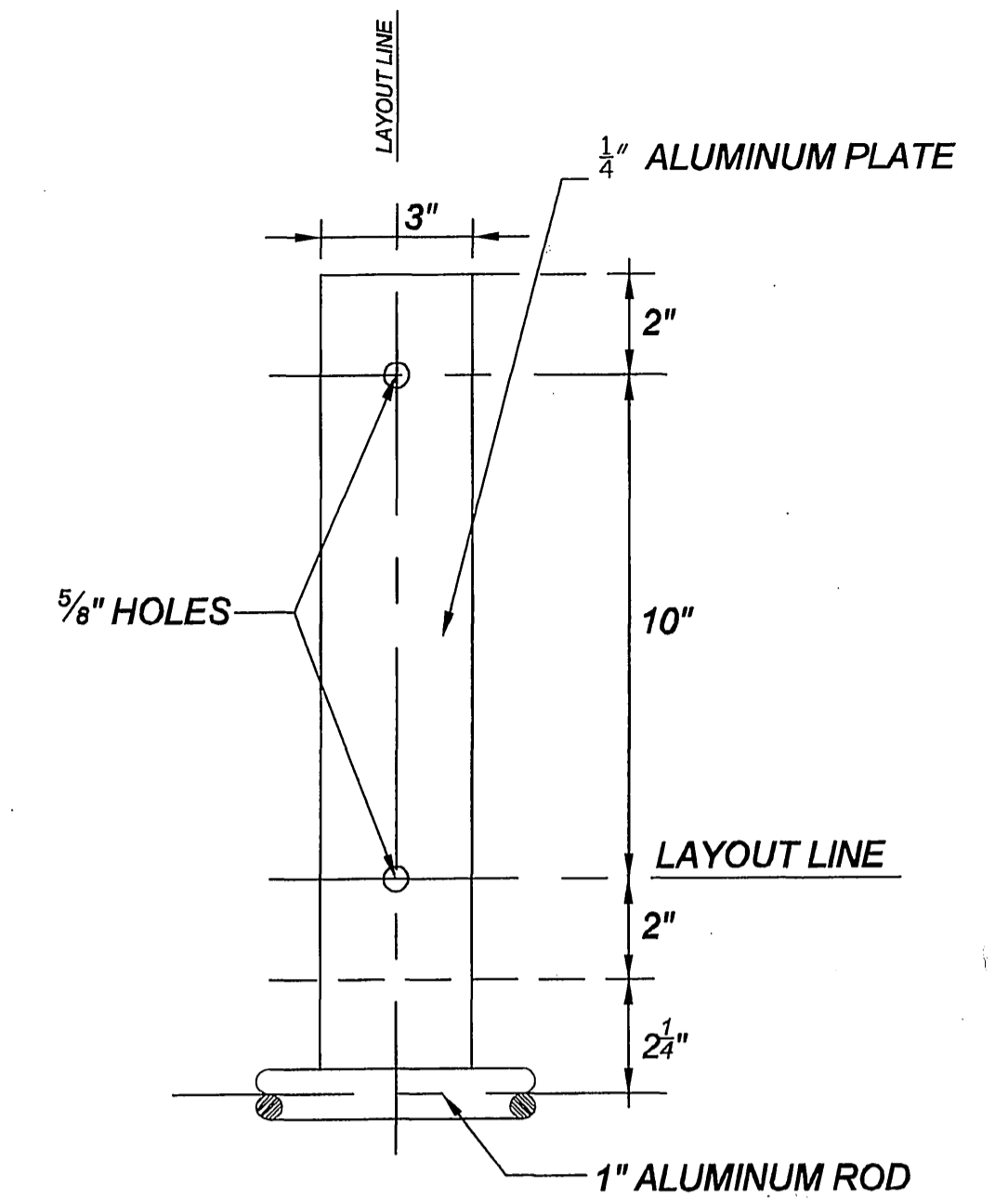
DETAIL A
NTS



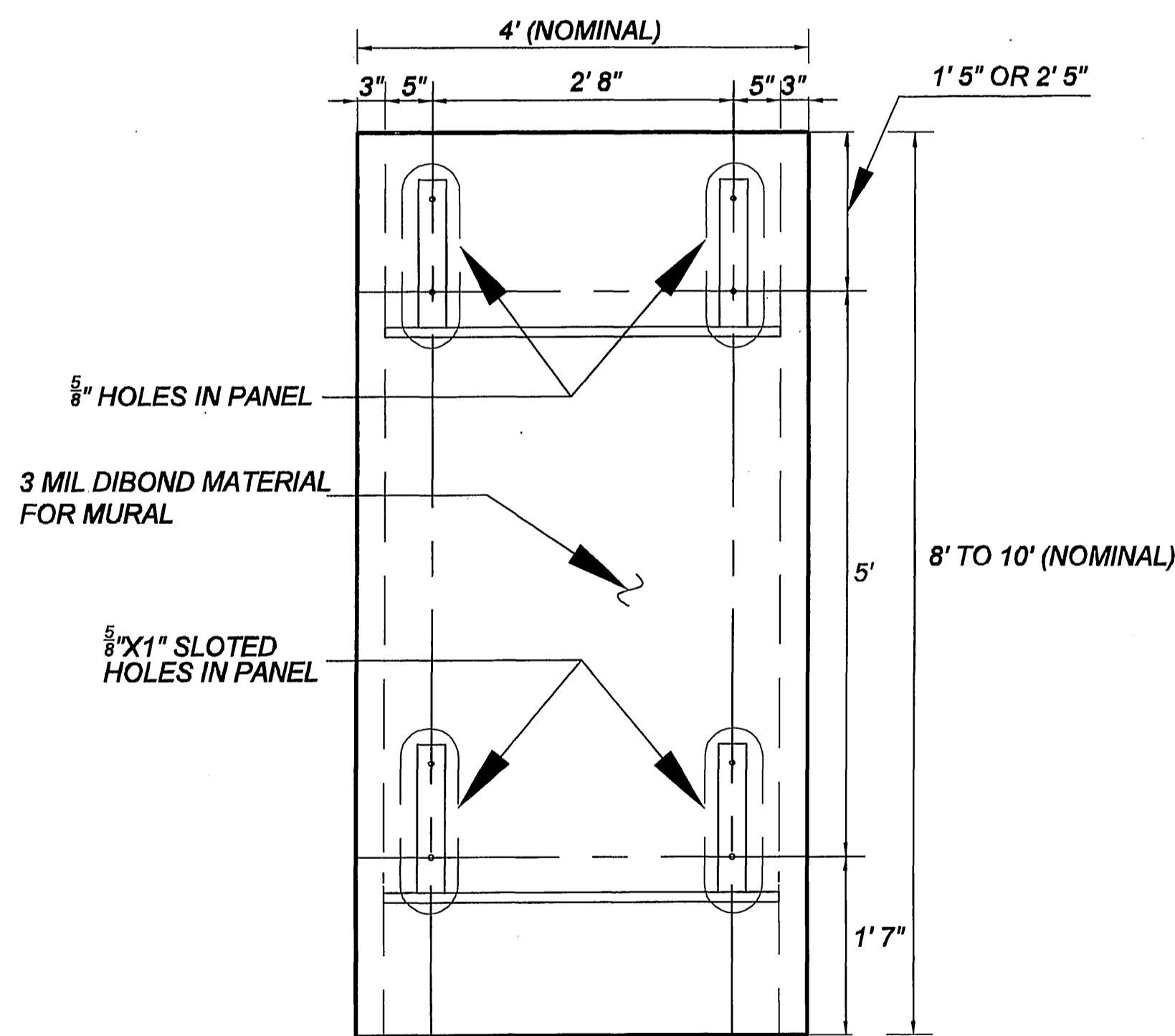
DETAIL B
NTS



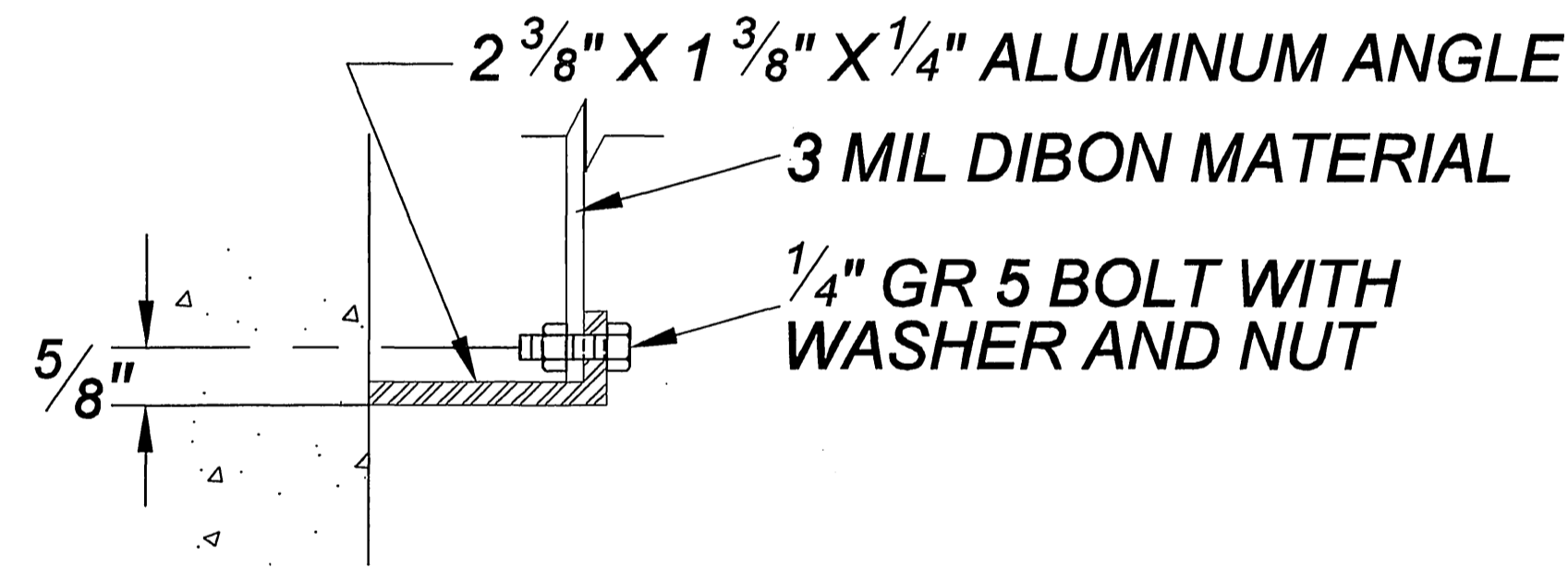
DETAIL C
NTS



DETAIL D
NTS



PANEL DETAIL E
NTS

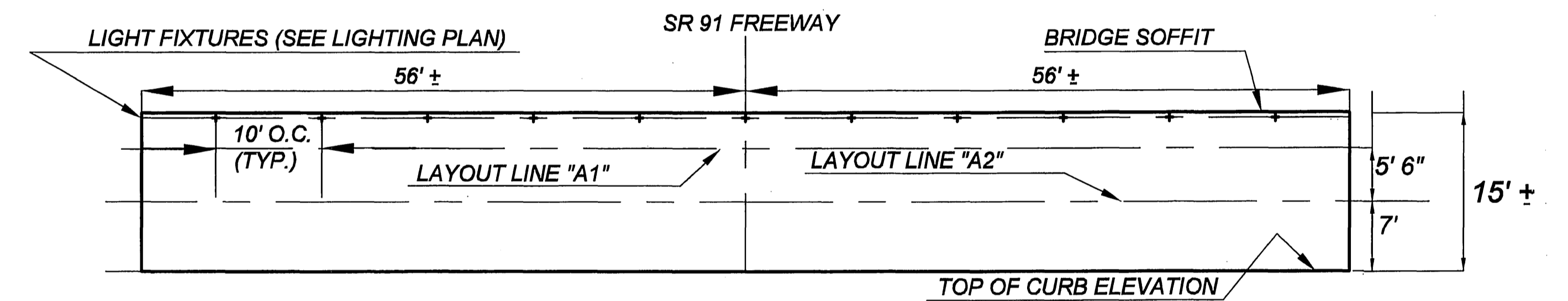


DETAIL F *
NTS

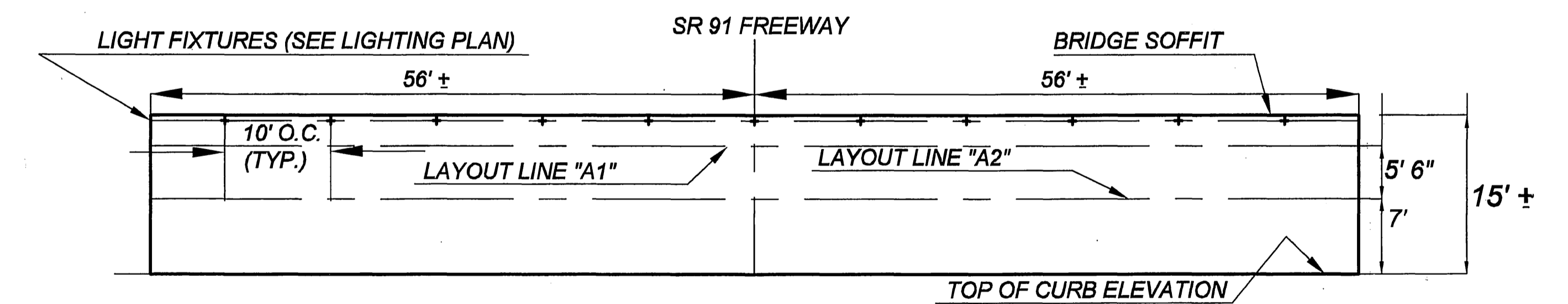
* TYPICAL ALL OUTER EDGES OF DIBOND MATERIAL

GENERAL NOTES

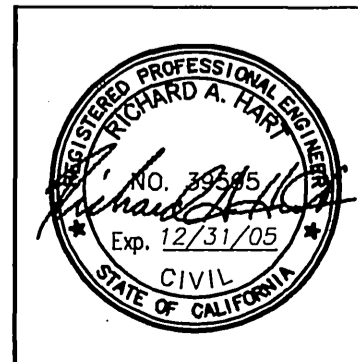
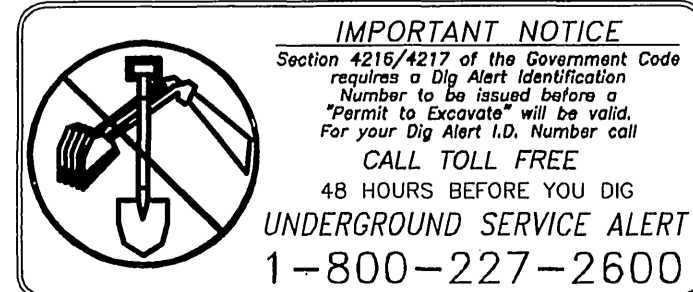
- 1) REINFORCED STEEL IN THE CONCRETE SHALL BE LOCATED WITH A DEVICE THAT IS NONDESTRUCTIVE TO THE BRIDGE STRUCTURE.
- 2) ANCHOR HOLES SHALL BE DRILLED WITH ROTARY DRILLS. MINIMUM SPACING BETWEEN BOLTS SHALL BE TWICE THE EMBEDMENT.
- 3) IF STEEL REINFORCEMENT IS ENCOUNTERED, THE HOLES SHALL BE ABANDONED. THE ABANDONED HOLES SHALL BE PATCHED BACK WITH MORTAR MATCHING THE ADJACENT CONCRETE COLOR.
- 4) ALL ANCHORS SHALL BE CALTRANS APPROVED.



ELEVATION LOOKING SOUTHWEST WALL
SCALE: 1" = 10'



ELEVATION LOOKING NORTHEAST WALL
SCALE: 1" = 10'



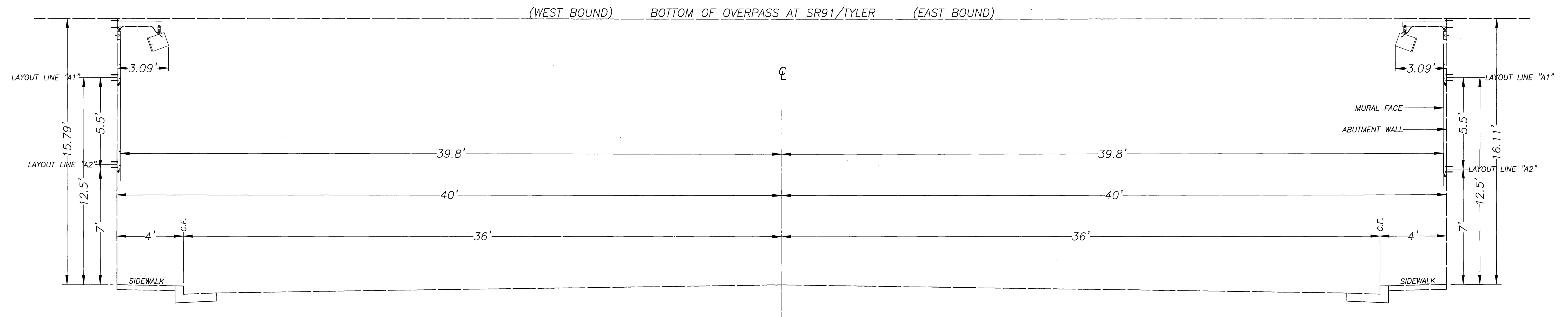
DAVID EVANS AND ASSOCIATES INC.
800 North Haven Avenue, Suite 300
Ontario California 91764
Phone: 909.481.5750

MARK	REVISIONS	APPR.	DATE
DESIGNED BY	DRAWN BY	CHECKED BY	

CITY OF RIVERSIDE, CALIFORNIA PUBLIC WORKS DEPARTMENT			
APPROVED BY	BY	DATE	APPROVED BY
PRINCIPAL ENGINEER		9/27/05	
CONST. CONTRACT ADMIN.		9/27/05	
STREET SERVICES			
SURVEYOR			
TRAFFIC DIVISION			
PARKS DEPARTMENT			
DATE		9/22/05	

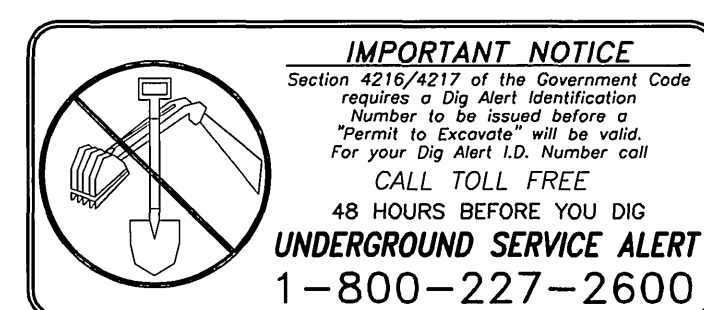
TYLER STREET MURAL	ACCT. NO. 9771800885 42100000
	R-3866
Tyler Street at 91 Freeway	SHEET 2 OF 3
HORIZONTAL SCALE: 1" = 20'	VERTICAL SCALE: 1" = 2'
Caltrans Permit No. 08-04-N-SN-0388 08-RIV-91-13.04	

INDEXED 9-29-05 LHH



TYLER MURAL TYP. SECTION

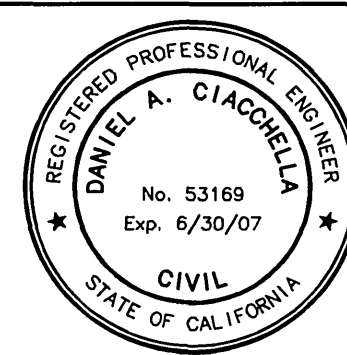
SCALE: 1" = 3'



ENGINEER IN RESPONSIBLE CHARGE

DANIEL A. CIACCHIELLA
R.C.E. No. 53169 expires 6/30/07

DATE 11/02/08



MARK	REVISIONS	APPR.	DATE
DESIGNED BY	DRAWN BY	CHECKED BY	
<u>DJS</u>	<u>DJS</u>		

CITY OF RIVERSIDE, CALIFORNIA PUBLIC WORKS DEPARTMENT			
APPROVED BY	BY	DATE	APPROVED BY
PRINCIPAL ENGINEER	<u>DJS</u>	<u>11/02/08</u>	<u>[Signature]</u>
CONST. CONTRACT ADMIN.	<u>DE</u>	<u>11/2/08</u>	
STREET SERVICES			
SURVEYOR			
TRAFFIC DIVISION			
PARKS DEPARTMENT			
			CITY ENGINEER
			DATE <u>11/2/08</u>

TYLER STREET MURAL LIGHTING

Tyler Street at 91 Freeway

HORIZONTAL SCALE: 1" = 3' VERTICAL SCALE: 1" = 3'

ACCT. NO. 9771800885 42100000

R-3866

SHEET 3 OF 3

Caltrans Permit No. 08-05-6-DP-0745
08-RIV-91-13.04