

RIVERSIDE CITY OF RIVERSIDE CALIFORNIA

PUBLIC WORKS DEPARTMENT

PRIMROSE DRIVE IMPROVEMENTS FROM MYERS STREET TO VAN BUREN BOULEVARD

GENERAL CONSTRUCTION NOTES:

- CONSTRUCTION SHALL BE IN ACCORDANCE WITH THE CITY OF RIVERSIDE STANDARD DRAWINGS AND STANDARD SPECIFICATIONS FOR PUBLIC WORKS CONSTRUCTION, 2003 EDITION.
- CONFLICTING UTILITIES IN THE CONSTRUCTION AREA SHALL BE RELOCATED BY OTHERS PRIOR TO CONSTRUCTION.
- EXISTING UTILITIES SHOWN ON THE PLANS, ARE PLOTTED FROM UTILITY RECORDS. THE CONTRACTOR IS REQUIRED TO TAKE DUE PRECAUTIONARY MEASURES TO LOCATE AND PROTECT ALL UTILITIES WHETHER OR NOT SHOWN ON THESE PLANS.

CONSTRUCTION NOTES:

- CONSTRUCT 4" THICK CRUSHED MISCELLANEOUS BASE DRIVEWAY APPROACH OVER COMPACTED NATIVE SOIL.
- CONSTRUCT 4" THICK AC DRIVEWAY APPROACH OVER COMPACTED NATIVE SOIL.
- FEATHER AC TO MEET GUTTER LIP OR CENTER LINE GRADE.

CONSTRUCTION LEGEND:

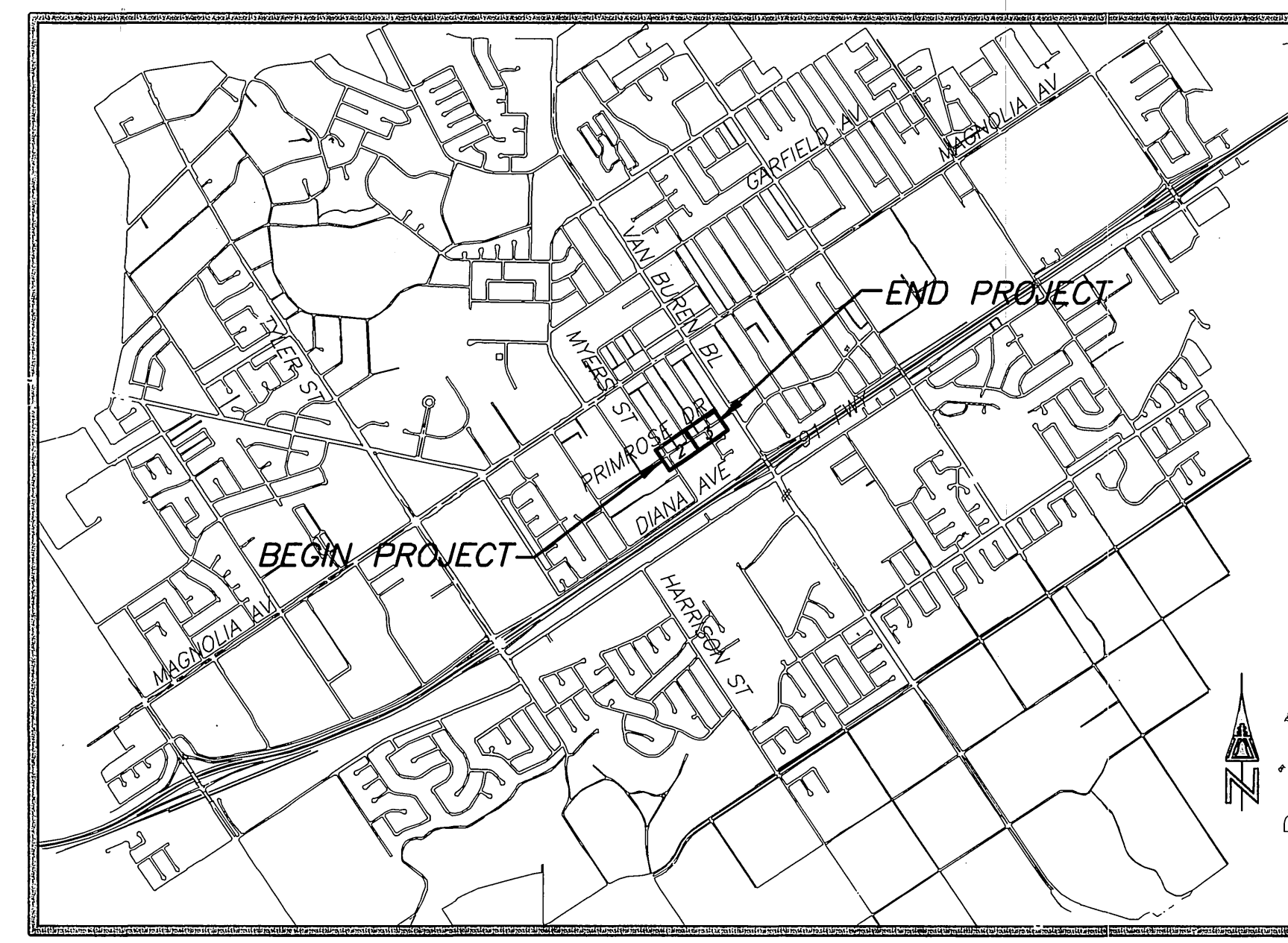
- NUMBERS ABOVE 100 IN A HEXAGON ON THE PLAN REFER TO THE RESPECTIVE STANDARD DRAWING AND SHALL BE CONSTRUCTED ACCORDINGLY, UNLESS MODIFICATIONS ARE NOTED ON THE PLAN. ANY NUMBER SHOWN BELOW THE STANDARD DRAWING NUMBER INDICATES THE SPECIFIC ALTERNATE TO BE CONSTRUCTED.
- ADJ. GV ADJUST GATE VALVE COVER TO GRADE.
- ADJ. MH ADJUST MANHOLE COVER TO GRADE.
- ADJ. WM ADJUST WATER METER VAULT TO GRADE.
- C/S CONSTRUCT STRUCTURAL SECTION OF 0.25' AC OVER 0.6' CRUSHED MISCELLANEOUS BASE.
- C/S1 CONSTRUCT STRUCTURAL SECTION OF 0.5' FULL DEPTH OF AC.
- E PUD ELECTRIC DIV. TO RELOCATE PRIOR TO CONSTRUCTION.
- REL RELOCATE STREET SIGN.
- R/T REMOVE TREE AS SHOWN ON THE PLANS.

EXISTING UNDERGROUND UTILITIES:

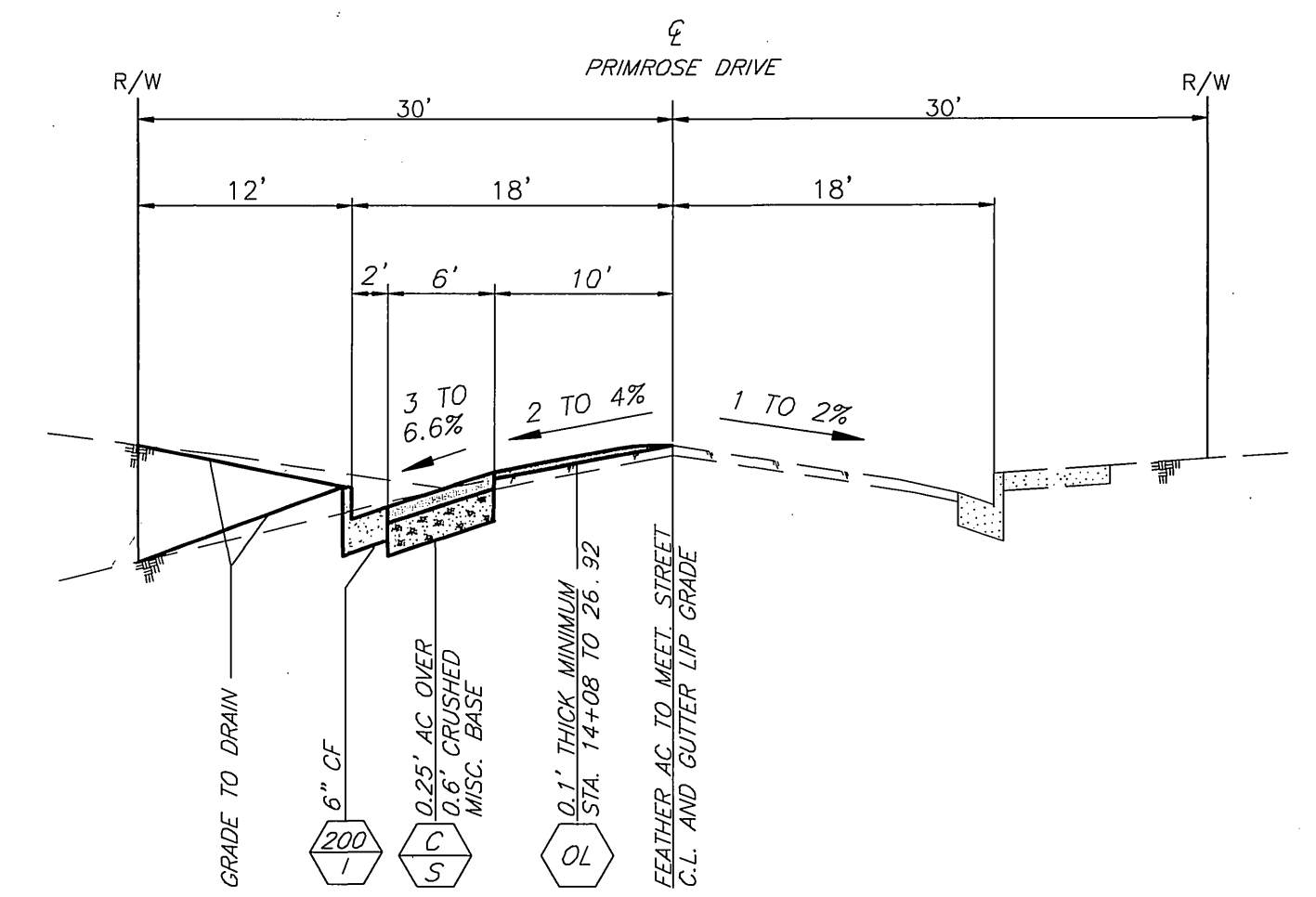
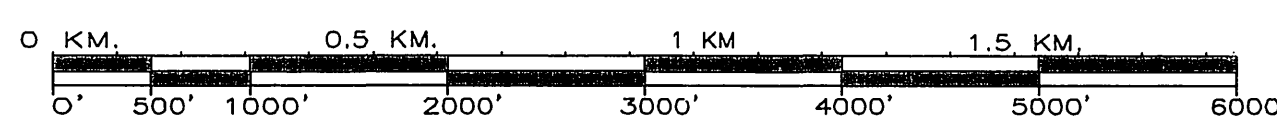
SANITARY SEWER	8" S	TELEPHONE CONDUIT	
WATER LINE	6" W	ELECTRICAL CONDUIT	E
STORM DRAIN	24" SD	ELECTROLIER LIGHTING CONDUIT	ELC
GAS LINE	3" G	TRAFFIC SIGNAL	SIG
ABANDONED UTILITY	6" G (ABAN'D.)	FIRE ALARM	F

EXISTING TOPOGRAPHY:

BLOCK WALL	POLE & GUY ANCHOR	PPB PEDESTRIAN PUSH BUTTON
BOARD FENCE	POWER POLE	RAILROAD TRACKS
WIRE FENCE	TELEPHONE POLE	RAILROAD SIGN
CHAIN LINK FENCE	TELEPHONE RISER	RAILROAD SIGNAL
SANITARY SEWER M.H.	JOINT USE POLE	TRAFFIC SIGNAL
SANITARY SEWER CLEANOUT	PULL BOX	TRAFFIC SIGNAL ON MAST ARM
STORM DRAIN M.H.	TRAFFIC SIGN	TRAFFIC SIGNAL CONTROLLER
IRRIGATION WEIR	PARKING METER	TRAFFIC SIGNAL LOOP DETECTOR
WATER M.H.	FIRE ALARM BOX	STREET LIGHT & TRAFFIC SIGNAL ON MAST ARM
GAS M.H.	STREET NAME SIGN	STREET LIGHT (UPRIGHT)
ELECTRIC M.H.	GAS METER	STREET LIGHT ON MAST ARM
TELEPHONE M.H.	MAIL BOX	STEEL POST
WATER METER	FAUCET	WOOD POST
FIRE HYDRANT	AIR VALVE	
SPRINKLER HEAD	AIR VENT	
VALVE	BUS STOP SIGN	
VALVE	BLOW-OFF VALVE	
AIR VALVE	IRRIGATION STAND PIPE	
AIR VENT	CONCRETE	
BUS STOP SIGN	ASPHALT	
BLOW-OFF VALVE	BUILDING	
IRRIGATION STAND PIPE	EDGE OF PAVEMENT	
	WHEEL STOP	
	A.C. BERM	



PROJECT LOCATION MAP



TYPICAL SECTIONS

N.T.S.
(FROM STA. 14+29± TO STA. 18+05± &
(FROM STA. 20+20± TO STA. 22+18±)

IMPORTANT NOTICE
Section 4216/4217 of the Government Code requires a Dig Alert Identification Number to be issued before a "Permit to Excavate" will be valid. For your Dig Alert I.D. Number call CALL TOLL FREE 48 HOURS BEFORE YOU DIG UNDERGROUND SERVICES ALERT 1-800-227-2600

BENCHMARK
P.K. NAIL AND CITY ENGINEER TAG IN THE TOP OF THE EAST CURB OF VAN BUREN BLVD 2 FEET NORTH OF THE E.C.R. OF THE NORTHEAST CURB RETURN OF VAN BUREN BLVD AND ANDREW ST.
ELEVATION: 805.903'

ENGINEER IN RESPONSIBLE CHARGE
PHILIP HANNAWAY
R.C.E. No. 44747 expires 3/31/2006
DATE 9/2/05



MARK	REVISIONS	APPR	DATE

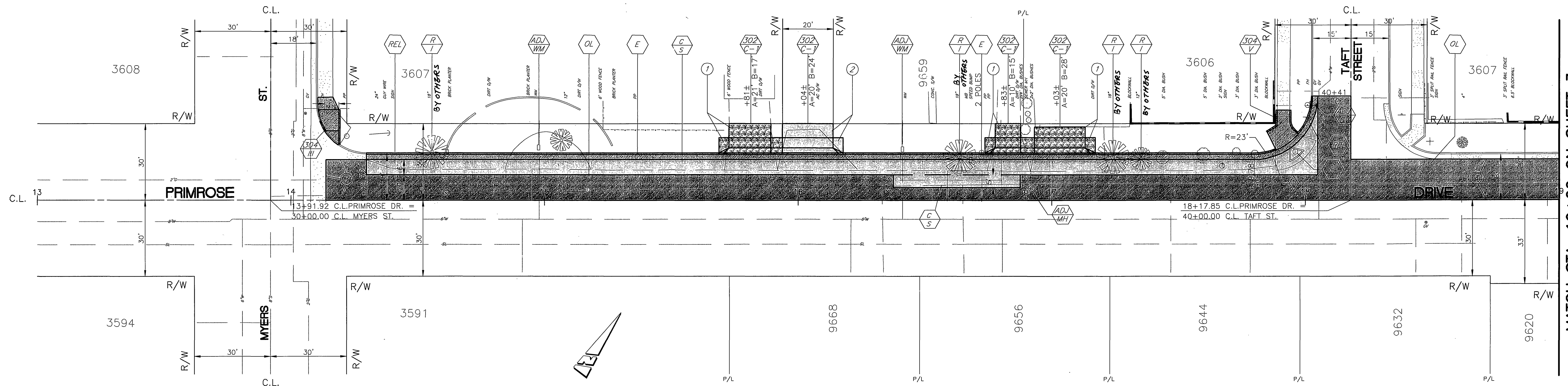
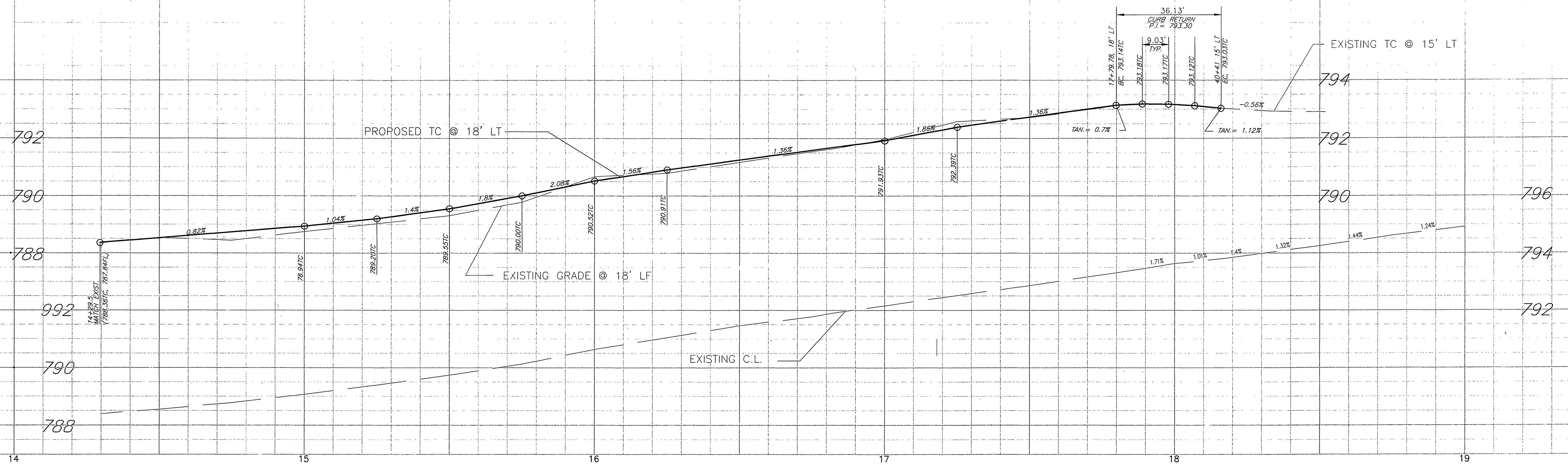
CITY OF RIVERSIDE, CALIFORNIA
PUBLIC WORKS DEPARTMENT

APPROVED BY: [Signature]
DATE: 9/2/05

APPROVED BY: [Signature]
DATE: 9/2/05

PRIMROSE DRIVE IMPROVEMENTS
N'LY SIDE FROM MYERS STREET TO VAN BUREN BOULEVARD
HORIZ. SCALE: N/A VERT. SCALE: N/A

ACCT. NO.: R-3874
SHEET 1 OF 3
FILE: COMMON/COMPLETE/R-3874



MATCH STA. 19+00 ON SHEET 3

STATION	PC	PT	PI	END
13+90.00	13+23.00	13+36.13	13+59.27	13+90.00

CURVE DATA

ENGINEER IN RESPONSIBLE CHARGE
Philip Hannawi
 PHILIP HANNAWI
 R.C.E. No. 44747 expires 3/31/2006
 DATE 9/2/05

MARK	REVISIONS	APPR.	DATE

DESIGNED BY: FYL DRAWN BY: FYL CHECKED BY: PH

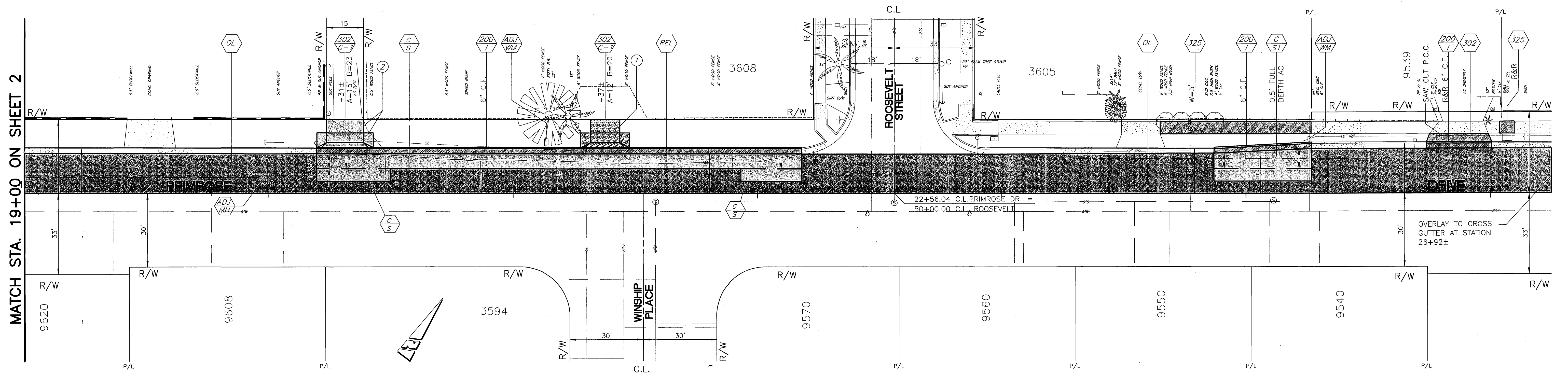
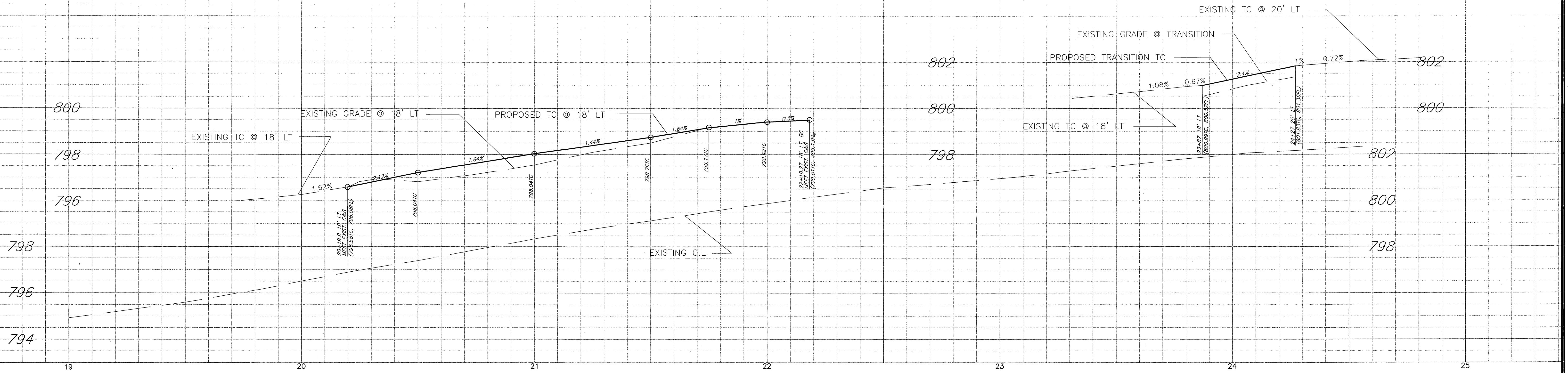
CITY OF RIVERSIDE, CALIFORNIA
 PUBLIC WORKS DEPARTMENT

APPROVED BY: *Philip Hannawi* DATE: 9/2/05
 PRINCIPAL ENGINEER
 TRAFFIC DIVISION
 SURVEYOR
 STREET SERVICES
 INSPECTION
 PARK & REC. DEPT.


PRIMROSE DRIVE IMPROVEMENTS
 N'LY SIDE FROM MYERS STREET TO VAN BUREN BOULEVARD

HORIZ. SCALE: 1" = 20' VERT. SCALE: 1" = 2'

ACCT. NO.: R-3874
 SHEET 2 OF 3
 FILE: COMMON/COMPLETE/R-3874



MATCH STA. 19+00 ON SHEET 2

<p>ENGINEER IN RESPONSIBLE CHARGE</p> <p>PHILIP HANNAWAY R.C.E. No. 44742 expires 3/31/2006 DATE 9/2/05</p> 	<p>DESIGNED BY: FYL, DRAWN BY: FYL, CHECKED BY: PH</p> <p>REVISIONS: APPR. DATE</p>	<p>CITY OF RIVERSIDE, CALIFORNIA PUBLIC WORKS DEPARTMENT</p> <p>APPROVED BY: PH (9/2/05) PRINCIPAL ENGINEER: DJH (9/2/05) TRAFFIC DIVISION: SURVEYOR, STREET SERVICES, INSPECTION, PARK & REC. DEPT.</p>	<p>PRIMROSE DRIVE IMPROVEMENTS N'LY SIDE FROM MYERS STREET TO VAN BUREN BOULEVARD</p> <p>DATE: 9/2/05</p>	<p>ACCT. NO.: R-3874 SHEET 3 OF 3 FILE: COMMON/COMPLETE/R-3874</p>
--	---	--	--	--