

CONSTRUCTION LEGEND

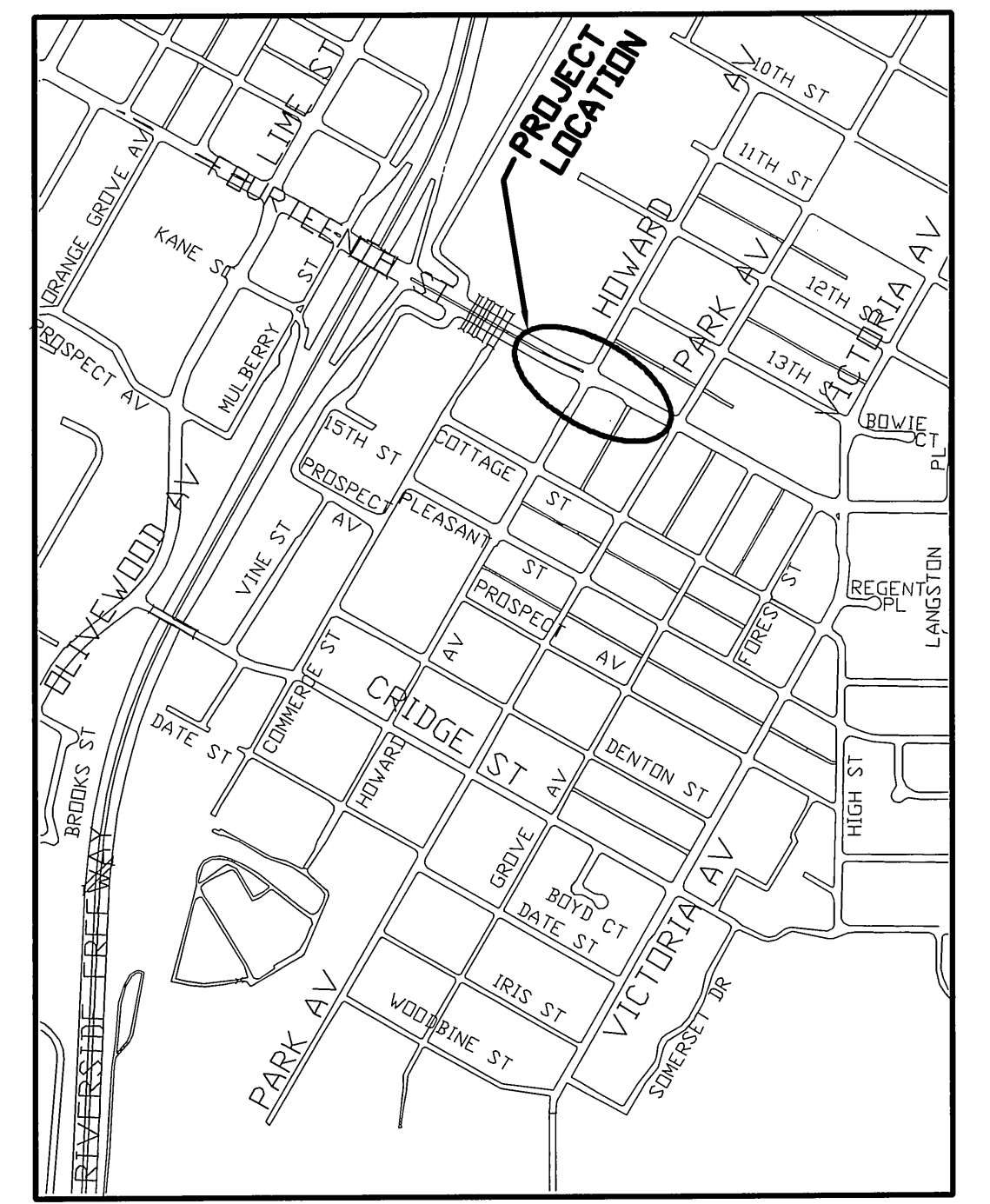
CENTER LINE — C —
 RIGHT-OF-WAY — R/W —
 SUBDIVISION LOT LINE — PL —

TOP OF SLOPE ———
 TOE OF SLOPE ———
 DIRECTION OF FLOW ———

- CONSTRUCT VARIABLE THICKNESS D.G.A.C. OVERLAY TO PROVIDE 1% MINIMUM CROSS SLOPE AWAY FROM MEDIAN CURB.
- CONSTRUCT NEW STRUCTURAL SECTION 8" THICK ASPHALT CONCRETE OVER COMPACTED NATIVE.

GENERAL CONSTRUCTION NOTES

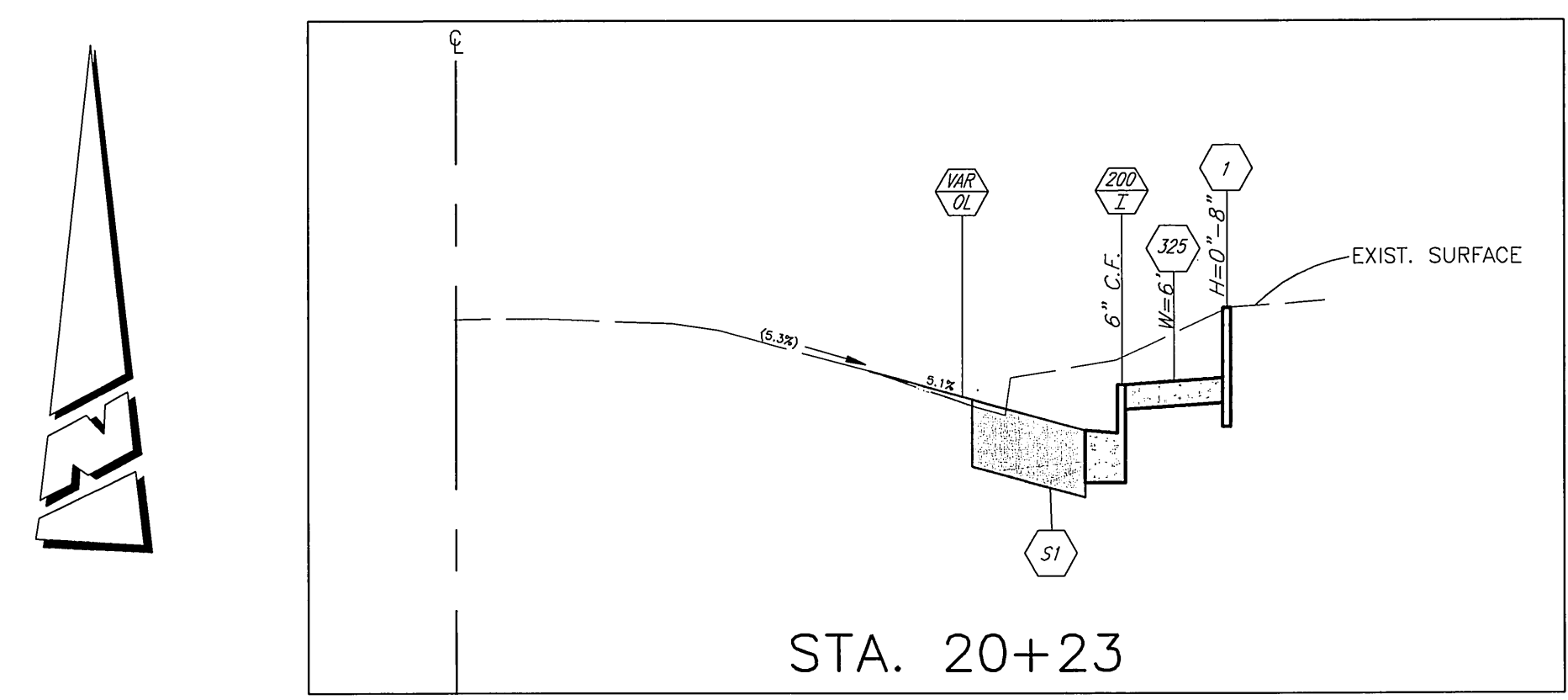
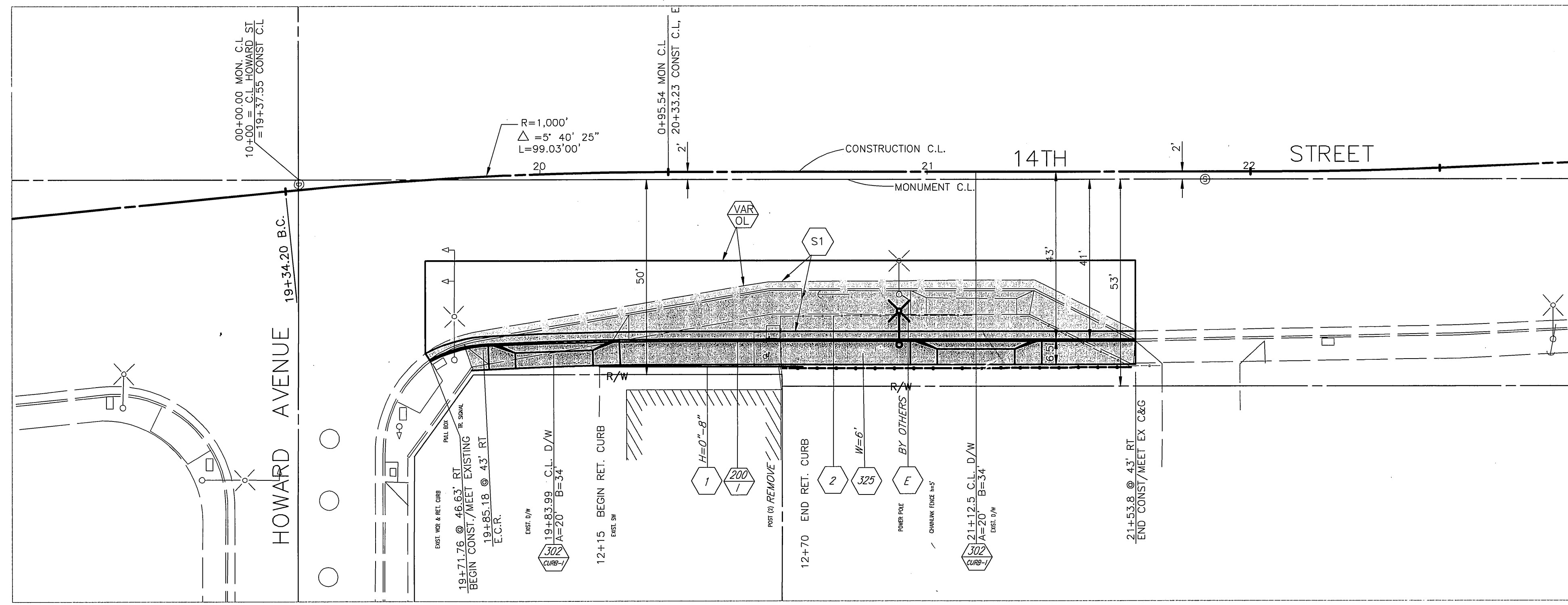
- 1 EXISTING UTILITIES SHOWN ON THIS PLAN ARE PLOTTED FROM UTILITY RECORDS. THE CONTRACTOR IS REQUIRED TO TAKE DUE PRECAUTIONARY MEASURES TO LOCATE AND PROTECT ALL UTILITIES WHETHER OR NOT SHOWN ON THIS PLAN. IF THE COVER OF A UTILITY IS KNOWN, IT IS SHOWN IN THE PROFILE. UTILITIES SHOWN IN THE PROFILE AS INDICATES THAT THE COVER IS UNKNOWN, BUT THE UTILITY IS NOT EXPECTED TO CONFLICT WITH THE PROPOSED IMPROVEMENTS.
- 2 ALL ELEVATIONS SHOWN ON THE PLANS SHALL BE STAKED IN THE FIELD.
- 3 PRIME CONTRACTORS BIDDING THIS WORK SHALL HAVE A CLASS A OR C-B LICENSE.
- 4 CONSTRUCTION SHALL BE IN ACCORDANCE WITH THE CITY OF RIVERSIDE STANDARD DWGS AND STANDARD SPECIFICATIONS FOR PUBLIC WORKS CONSTRUCTION, 1991 EDITION.



PROJECT LOCATION MAP
N.T.S.

SPECIFIC CONSTRUCTION NOTES

- CONSTRUCT PCC SIDEWALK PER STD. DWG 325.
- CONSTRUCT PCC DWY APPROACH PER STD. DWG. 302
- CONSTRUCT PCC CURB AND GUTTER PER STD. DWG. 200
- RELOCATE POWER POLE (BY OTHERS)
- CONSTRUCT PCC RETAINING CURB, H=0" - 8".
- RELOCATE EXISTING CHAINLINK FENCE BEHIND PROPOSED SIDEWALK.



BENCHMARK:
 H6-D3
 P.K. NAIL & CITY ENGINEER TAG IN THE CENTER OF THE NORTHEAST CURB RETURN OF COMMERCE STREET AND COTTAGE STREET
 ELEV. - 875.844

ENGINEER IN RESPONSIBLE CHARGE

 PHILIP HANAWI
 R.C.E. No. 44747 expires 3/31/2006
 DATE 12/21/05



CITY OF RIVERSIDE, CALIFORNIA PUBLIC WORKS DEPARTMENT	
APPROVED BY	DATE
PRINCIPAL ENGINEER	12/21/05
STREET SERVICES	
SURVEYOR	12/21/05
TRAFFIC DIVISION	
INSPECTION	12/21/05

14TH ST. WIDENING
 SE CORNER OF 14TH ST. & HOWARD AVE.

ACCT. NO. 9588127152-440223
R-3908
 SHEET 1 OF 1